

280 **OC** LIQTECH **TR4**

ALL-IN-ONE LIQUID CPU COOLER



*Incredible 500W+ TDP
Over-clocking Support*



ELC-LTTR280-TBP

- 100% sTR4 IHS Coverage
- Exclusive for AMD sTR4 Platform
- Support 500W+ TDP
- Patented Shunt Channel Technology
- For High-end, Overclocked CPUs



ELC-LTTR280-TBP

ENERMAX LIQTECH TR4 series is especially engineered for AMD SocketTR4, featuring patented Shunt Channel Technology (SCT), high pressure PWM fans, and high-efficiency ceramic nano PI bearing pump to keep your systems cool and quiet at all times. LIQTECH TR4 lineup offers unbeatable 500W+ cooling capacity; this liquid cooling innovation is definitely a perfect choice for high-end, overclocked CPUs.

Features

AMD SocketTR4 Ready!

Quick & user-friendly mounting system for the latest AMD (TR4) Threadripper CPU.

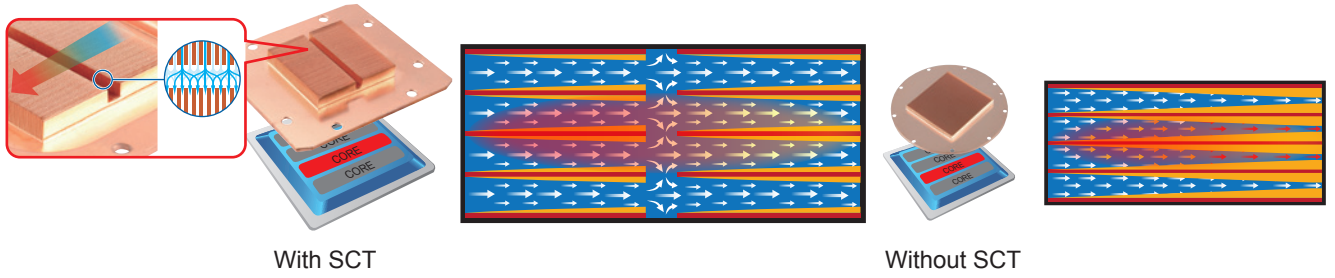


100% sTR4 IHS Coverage

Tailored to 100% cover AMD Threadripper's integrated heat spreader (IHS) for uncompromised cooling performance.

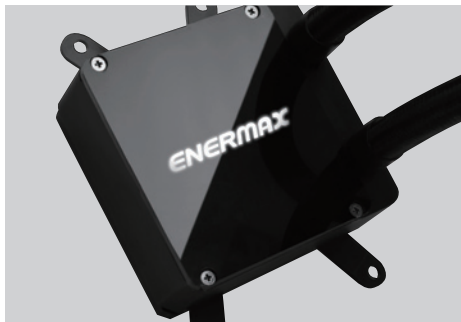
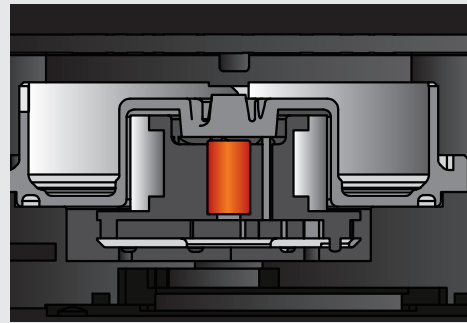
Patented Shunt-Channel-Technology (SCT) boosts thermal conductivity and eliminates any heat surge

ENERMAX patented SCT (Shunt-Channel-Technology) design enables the cold plate to eliminate the "Boundary Layer" to increase coolant flow momentum and accelerate heat transfer performance. The SCT also lets heated and non-heated coolant to swap the channel and increase utilization rate.



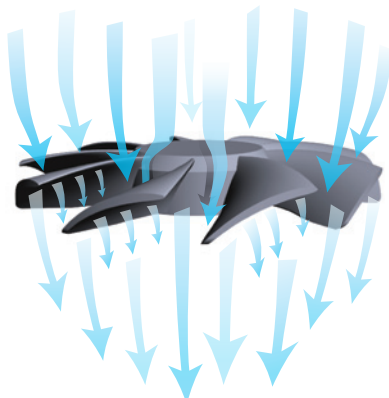
Powerful pump design

Robust pump with precision engineering delivers high flow rate up to 450 L/h for superior cooling performance.



Luminous LED logo as power-on indicator

Anti-vibration rubber pads provide noiseless stable operation



Innovative High Pressure Blades

Hi-pressure blade design enhances the cooling performance.

▶ Premium 400mm weaved tubing is perfect for mainstream system builds

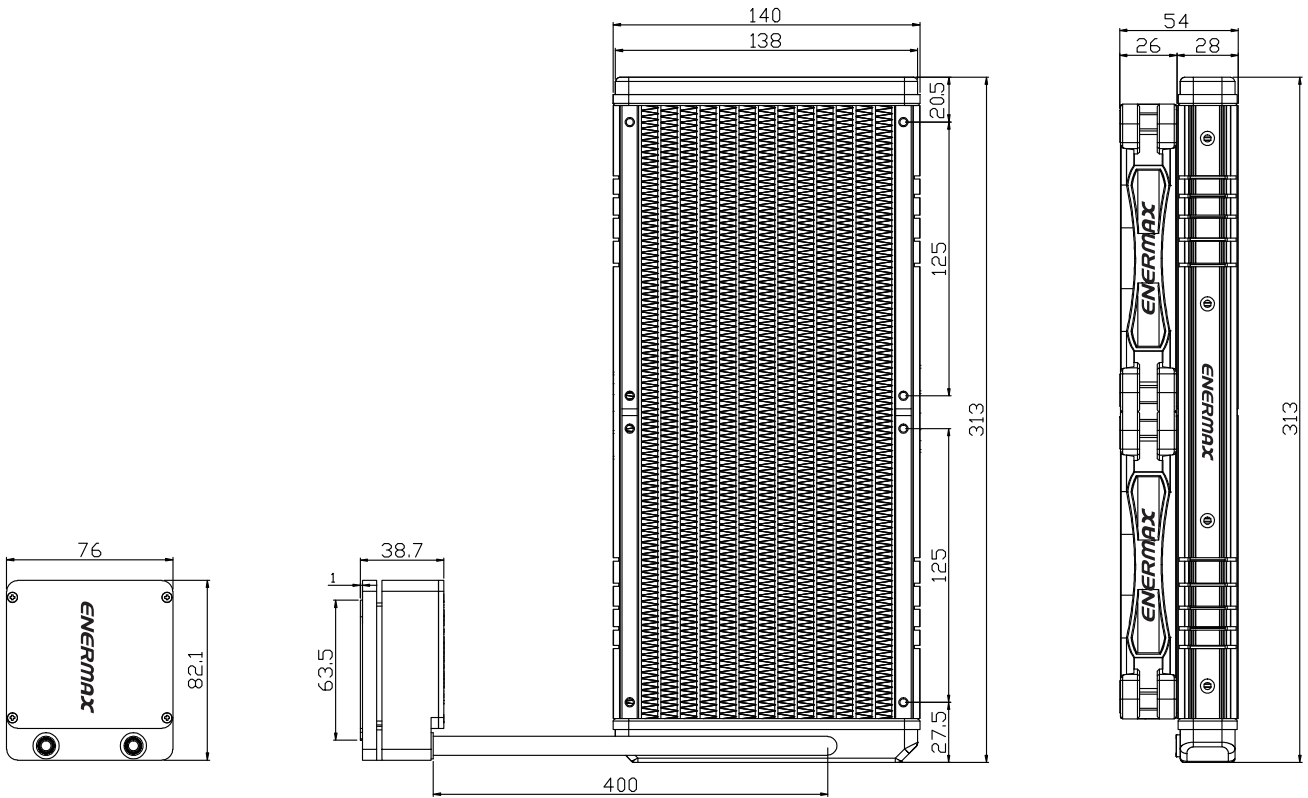
▶ Flexible polyamide (PA) rubber tubes ensure zero permeability



Dimensions

unit:mm

LIQTECH **280** **OC** **TR4**



Specifications

Model		ELC-LTTR280-TBP
Cold Plate	Material	Copper
Pump	Bearing	Ceramic nano PI bearing
	MTBF	100,000 hours
	Motor Speed	3000 RPM \pm 10%
	Rated Voltage	12 V
	Rated Current	0.4 A
Radiator	Dimension	313 x 140 x 28 mm
	Material	Aluminum
Tube	Material	Polyamide (PA) rubber tube
	Length	400 mm
Weight (w/o fan)		1260 g
Bracket	Compatibility	AMD® TR4 / SP3
Fan	Dimension	140 x 140 x 25 mm
	Bearing	Twister Bearing
	MTBF	\geq 160,000 hours
	Speed	500 - 1500 RPM \pm 10%
	Rated Voltage	12 V
	Rated Current	0.2 A
	Air Flow	31.86 ~ 80.71 CFM 54.13 ~ 137.13 m ³ /h
	Static Pressure	0.960 ~ 4.812 mm-H ₂ O
	Noise Level	14 ~ 25 dBA
	Connector	4 pin PWM
Warranty		2 years

Shipping Information	
Model	ELC-LTTR280-TBP
Barcode	EAN: 4713157723413 UPC: 819315023419
Box dimension	375 x 185 x 172 mm
Gross weight / unit	2.4 kg
Carton dimension	570 x 390 x 380 mm
Qty / carton	6
Gross weight / carton	15.71 kg