



Hercules Smooth Sectional



Hercules Smooth Monolithic

5½" Center-to-Center Door Prep



Hercules Smooth Full Length

5½" Center-to-Center Door Prep



EMPowered™ Motorized Smart Lock Upgrade - Works with Yale Access
Includes: Yale Access Module, Wi-Fi Bridge and DoorSense™
See Door Hardware Price Book pages 28-31 for details



Inside trim is pre-configured with Square Rosette

HERCULES SMOOTH SECTIONAL	EMPowered Upgrade	Product Code	Knob or Lever Style for Inside Trim	Finish**	List Price	EMPowered Upgrade List Price	
Single Cylinder	EMP	4214	See Door Hardware Price Book, Pages 8-10 for Brass Knob & Lever Options.	Satin Brass (US4) Oil Rubbed Bronze (US10B) Polished Nickel - Lifetime (US14) Satin Nickel (US15) Flat Black (US19) Polished Chrome (US26) Unlacquered Brass (US3NL)*	\$396.00	\$939.00	
Double Cylinder		4224			See Door Hardware Price Book, Page 10 for Glass & Porcelain Knob Options.	\$396.00	
Dummy		4204				\$396.00	
HERCULES SMOOTH MONOLITHIC	EMPowered Upgrade	Product Code				List Price	EMPowered Upgrade List Price
Single Cylinder	EMP	4215				\$455.00	\$999.00
Double Cylinder		4225				\$455.00	
Dummy		4205			\$455.00		
HERCULES SMOOTH FULL LENGTH	EMPowered Upgrade	Product Code			List Price	EMPowered Upgrade List Price	
Single Cylinder	EMP	4216			\$534.00	\$1,076.00	
Double Cylinder		4226			\$534.00		
Dummy		4206			\$534.00		
INTERCONNECT DEVICE		Product Code				List Price	
Hercules Smooth Monolithic and Full Length		443	Not Available for Double Cylinder or EMPowered™ Upgrade. Handing Required.			\$88.00	

*Unlacquered Brass (US3NL) finish available for a \$50 List Price upcharge per item.

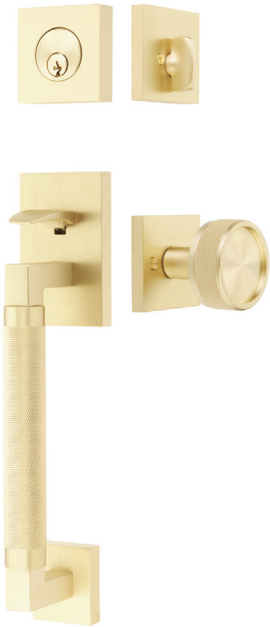
**EMPowered™ Finishes: Oil Rubbed Bronze (US10B), Polished Nickel (US14), Satin Nickel (US15), Flat Black (US19), and Polished Chrome (US26).

- **Handing Required if Lever Used on Inside or if Interconnect Device is Specified**
- Fits standard door thickness of 1¾". Specify if thicker. EMPowered™ fits door thickness up to 2¼".
- Standard 2⅞" door prep. Standard latch is for 2⅞" backset. Specify 2¾" backset if required.
- 28° rotation latch not available for use with Tubular Entrance Handlesets.

Weiser® (WR5) Keyway

- Specify by adding "W" to the beginning of product code.
- No upcharge for cylinder substitution.
- Can be keyed into existing Weiser® system.

Hercules Knurled Sectional



Hercules Knurled Monolithic

5½" Center-to-Center Door Prep



Hercules Knurled Full Length

5½" Center-to-Center Door Prep



EMPowered™ Motorized Smart Lock Upgrade - Works with Yale Access
Includes: Yale Access Module, Wi-Fi Bridge and DoorSense™
See Door Hardware Price Book pages 28-31 for details



Inside trim is pre-configured with Square Rosette

HERCULES KNURLED SECTIONAL	EMPowered Upgrade	Product Code	Knob or Lever Style for Inside Trim	Finish**	List Price	EMPowered Upgrade List Price	
Single Cylinder	EMP	4217	See Door Hardware Price Book, Pages 8-10 for Brass Knob & Lever Options.	Satin Brass (US4) Oil Rubbed Bronze (US10B) Polished Nickel - Lifetime (US14) Satin Nickel (US15) Flat Black (US19) Polished Chrome (US26) Unlacquered Brass (US3NL)*	\$396.00	\$939.00	
Double Cylinder		4227			See Door Hardware Price Book, Page 10 for Glass & Porcelain Knob Options.	\$396.00	
Dummy		4207				\$396.00	
HERCULES KNURLED MONOLITHIC	EMPowered Upgrade	Product Code				List Price	EMPowered Upgrade List Price
Single Cylinder	EMP	4218				\$455.00	\$999.00
Double Cylinder		4228				\$455.00	
Dummy		4208				\$455.00	
HERCULES KNURLED FULL LENGTH	EMPowered Upgrade	Product Code				List Price	EMPowered Upgrade List Price
Single Cylinder	EMP	4219				\$534.00	\$1,076.00
Double Cylinder		4229			\$534.00		
Dummy		4209			\$534.00		
INTERCONNECT DEVICE		Product Code				List Price	
Hercules Knurled Monolithic and Full Length		443	Not Available for Double Cylinder or EMPowered™ Upgrade. Handing Required.			\$88.00	

*Unlacquered Brass (US3NL) finish available for a \$50 List Price upcharge per item.

**EMPowered™ Finishes: Oil Rubbed Bronze (US10B), Polished Nickel (US14), Satin Nickel (US15), Flat Black (US19), and Polished Chrome (US26).

• Handing Required if Lever Used on Inside or if Interconnect Device is Specified

- Fits standard door thickness of 1¾". Specify if thicker. EMPowered™ fits door thickness up to 2¼".
- Standard 2½" door prep. Standard latch is for 2¾" backset. Specify 2¾" backset if required.
- 28° rotation latch not available for use with Tubular Entrance Handlesets.

Weiser® (WR5) Keyway

- Specify by adding "W" to the beginning of product code.
- No upcharge for cylinder substitution.
- Can be keyed into existing Weiser® system.

To order: (W) Function + Product Code + Knob/Lever Style + Handing + Finish + Add Door Thickness to Comments

SOLID BRASS DOOR PULLS

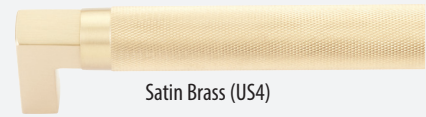
Hercules Smooth
8" Center-to-Center



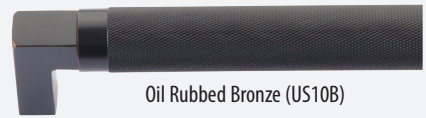
Hercules Knurled
8" Center-to-Center



Finishes



Satin Brass (US4)



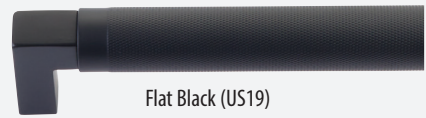
Oil Rubbed Bronze (US10B)



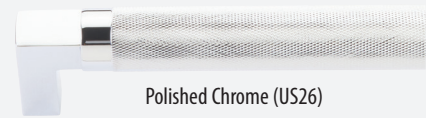
Polished Nickel - Lifetime (US14)



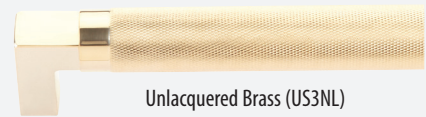
Satin Nickel (US15)



Flat Black (US19)



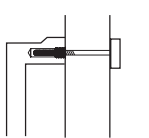
Polished Chrome (US26)



Unlacquered Brass (US3NL)

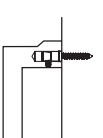
Standard Mounting

Thru-Bolt with
Decorative Caps

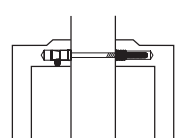


Optional Mounting

Concealed Surface
CS



Back-to-Back
BTB



How To Order:

CS or **BTB** 86480 US4
 Concealed Surface or Back-to-Back Optional Mounting. Leave Finish Product Code Blank for Standard Mounting.

BRASS DOOR PULLS	Optional Mounting	Product Code	Finish	List Price	Back-to-Back List Price
Hercules Smooth 8" Door Pull	CS or BTB	86480	Satin Brass (US4) Oil Rubbed Bronze (US10B) Polished Nickel - Lifetime (US14) Satin Nickel (US15)	\$139.00	\$278.00
Hercules Knurled 8" Door Pull	CS or BTB	86481	Flat Black (US19) Polished Chrome (US26) Unlacquered Brass (US3NL)*	\$139.00	\$278.00

*Unlacquered Brass (US3NL) finish available for a \$20 List Price upcharge per Door/Appliance Pull and Back-to-Back pulls are available for a \$40 List Price upcharge per pair.