

# Aluminum Panelboard Lugs - Two Hole Tongue

Types PB-D and PB-N

**For use with two, three, or four copper or aluminum conductors**



- Manufactured from high strength aluminum alloy extrusion
- Electro-tin plated to ensure minimum contact resistance and protection against corrosion when used with copper wire
- Stack design allows for easy installation where space is limited
- Two hole mounting pad allows for maximum surface contact in heavy duty applications
- Rated for 600 V, 90°C applications
- The use of oxide inhibitor is recommended for all aluminum terminations

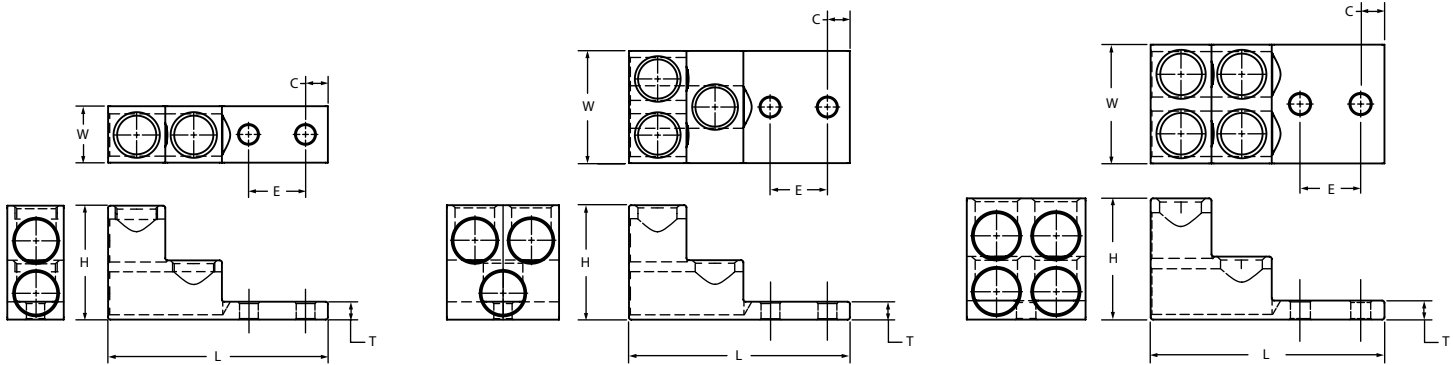


FIG. 1

FIG. 2

FIG. 3

CATALOG NUMBER	CONDUCTOR RANGE	NO. OF CONDUCTORS	FIG. NO.	APPROXIMATE DIMENSIONS (IN.)						MTG. BOLT SIZE	HEX SIZE
				L	W	H	T	C	E		
PB2350D	6 AWG - 350 kcmil	2	1	3.86	1.00	2.00	0.31	0.39	1.00	5/16"	5/16"
PB2350D1		2	1	3.86	1.00	2.00	0.31	0.39	1.00	3/8"	5/16"
PB3350D		3	2	3.86	1.97	2.00	0.31	0.39	1.00	5/16"	5/16"
PB3350D1		3	2	3.86	1.97	2.00	0.31	0.39	1.00	3/8"	5/16"
PB4350D		4	3	3.86	1.97	2.00	0.31	0.39	1.00	5/16"	5/16"
PB4350D1		4	3	3.86	1.97	2.00	0.31	0.39	1.00	3/8"	5/16"
PB2600D1	2 AWG - 600 kcmil	2	1	4.94	1.50	3.00	0.76	0.39	1.38	3/8"	5/16"
PB2600N		2	1	5.47	1.50	3.00	0.76	0.62	1.75	1/2"	5/16"
PB3600D1		3	2	4.94	2.68	3.00	0.76	0.39	1.38	3/8"	5/16"
PB3600N		3	2	5.47	2.68	3.00	0.76	0.62	1.75	1/2"	5/16"
PB4600D1		4	3	4.94	2.68	3.00	0.76	0.39	1.38	3/8"	5/16"
PB4600N		4	3	5.47	2.68	3.00	0.76	0.62	1.75	1/2"	5/16"
PB2750D1	1/0 AWG - 750 kcmil	2	1	4.94	1.58	3.00	0.76	0.39	1.38	3/8"	5/16"
PB2750N		2	1	5.47	1.58	3.00	0.76	0.62	1.75	1/2"	5/16"
PB3750D1		3	2	4.94	2.84	3.00	0.76	0.39	1.38	3/8"	5/16"
PB3750N		3	2	5.47	2.84	3.00	0.76	0.62	1.75	1/2"	5/16"
PB4750D1		4	3	4.94	2.84	3.00	0.76	0.39	1.38	3/8"	5/16"
PB4750N		4	3	5.47	2.84	3.00	0.76	0.62	1.75	1/2"	5/16"