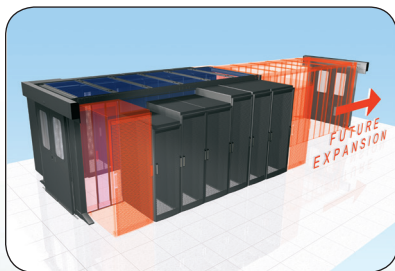


Cabinets, Thermal, Racks and Cable Management Systems

Panduit provides leading edge cabinets, racks, and cable management solutions for telecommunications equipment rooms, data centers, and premise wiring applications. As the demand for system performance increases, it becomes essential to protect and manage cables to maintain system reliability and scalability. Panduit continues to provide innovative products that create end-to-end solutions for managing, protecting, and showcasing networks for lowest cost of ownership.



- **Net-Access™ Switch and Server Cabinets have been optimized for higher density switch and server applications. Superior cable management, inset frame, and in-cabinet ducting options ensure proper airflow for improved network performance and availability**
- **Panduit rack systems allow complete flexibility for a wide range of cable and equipment combinations and are designed to maximize cable access**
- **Vertical cable managers allow increased cable density for maximum space utilization and organization**
- **Panduit Thermal Management products meet the challenge to maximize available rack space and ensures uniform cooling air temperature is delivered to equipment in high density PODs, allowing full utilization of cabinet space and cooling capacity.**
- **Panduit® NetManager™ High Capacity Horizontal Cable Managers provide an efficient way to manage high performance copper, fiber, or coaxial cables**
- **CoolBoot® Raised Floor Air Sealing Grommet redirects conditioned air toward cooling network equipment**
- **Panduit cable management products and accessories maintain bend radius control and cable performance while bundling and securing cable to prevent snags and stress from overbending**

A. About Panduit

B. Copper Systems

C. Fiber Systems

D. Faceplates, Outlet Frames & Surface Mount Boxes

E. Keystone Cabling Systems

F. Zone Cabling

G. Cable Routing Systems

H. Surface Raceway

J. Cabinets, Racks & Cable Management Systems

K. Power Management

L. Grounding & Bonding

M. Identification Products

N. Cable Management Accessories

O. Part Number Index

A.
About
Panduit

Seal, Direct, Contain, and Monitor to Improve PUE

The Panduit Energy Efficient Data Center Cabinet System can greatly improve the energy efficiency of data centers while confidently increasing kW per cabinet density to increase utilization of data center space. Panduit Energy Efficient Data Center Cabinet System provides total separation allowing higher data center set points and reduced cooling system energy consumption by up to 40%.¹

B.
Copper
Systems

C.
Fiber
Systems

Seal every gap for complete separation of cooling and exhaust air

Net-Access™ Cabinets and Sealing Accessories eliminate leakage through the cabinet structure preventing re-circulation of hot exhaust air back into equipment inlets.

D.
Faceplates,
Outlet
Frames &
Surface
Mount Boxes

Direct cold air to where it is needed

Net-Direct™ In-Cabinet Ducting directs cool air directly into the intake fans preventing recirculation and reducing inlet air temperature by as much as 14°C, lowering fan energy consumption².

E.
Keystone
Cabling
Systems

F.
Zone
Cabling

Contain cooling and exhaust duct, universal, hot, and cold aisle containment systems for maximum cooling capacity efficiency

Net-Contain™ Vertical Exhaust Duct, Universal, Hot and Cold Aisle Containment Systems eliminate hot air recirculation and mixing with cold air allowing room and chilled water temperature set points to be raised and PUE to be lowered.

G.
Cable
Routing
Systems

H.
Surface
Raceway

Monitor to maintain operational and energy efficiency

Once the physical infrastructure has been optimized for thermal efficiency, Panduit® SmartZone™ Software Suite allow continuous monitoring of highly accurate, granular PUE measurements in real-time to maintain thermal efficiency in dynamic data center environments.

J.
Cabinets,
Racks &
Cable
Management
Systems

K.
Power
Management

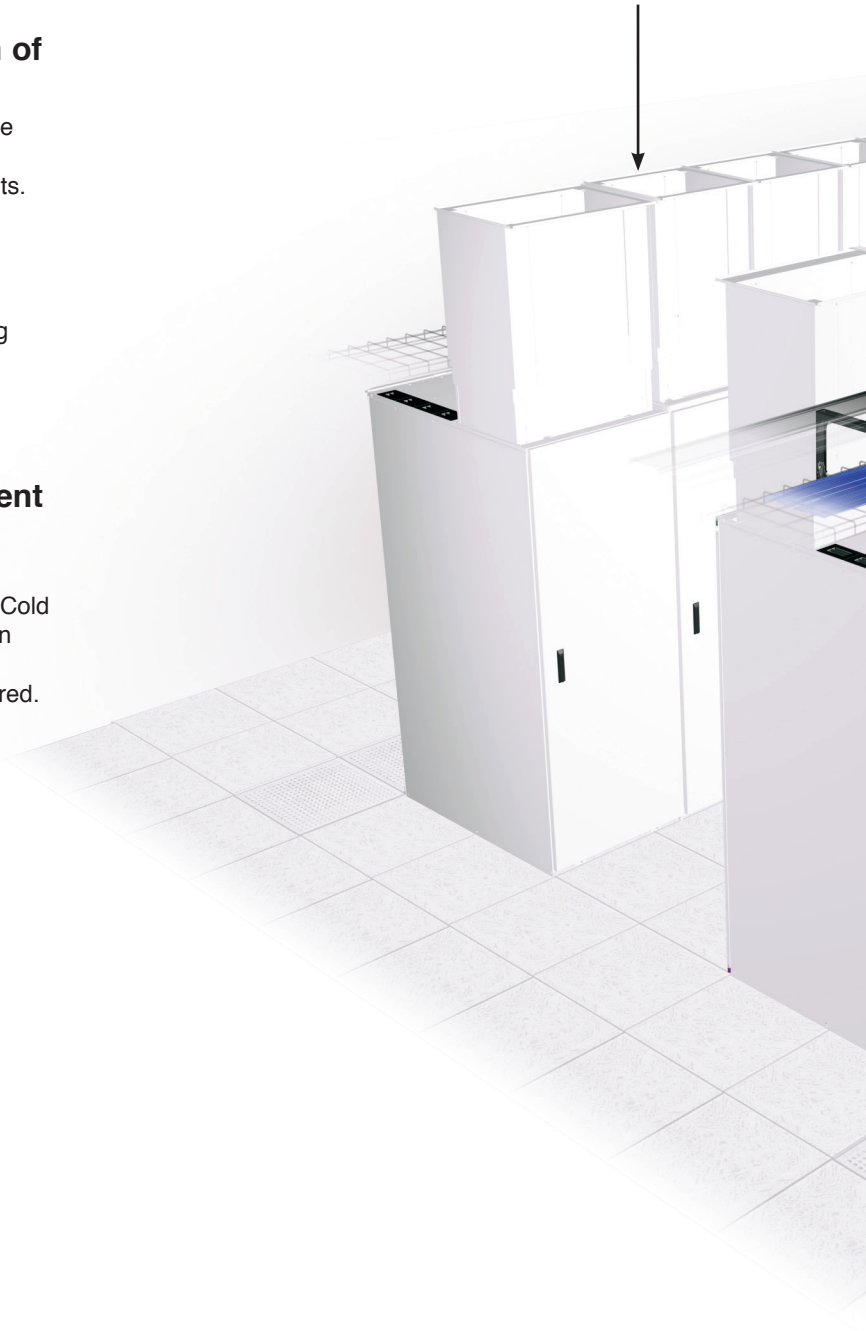
L.
Grounding
&
Bonding

M.
Identification
Products

N.
Cable
Management
Accessories

O.
Part
Number
Index

Net-Contain™ Vertical Exhaust Duct



¹ Impact of Air Containment Systems, Panduit White Paper #WP-20, June 2012.

² The Use of In-Cabinet Ducting to Improve Inlet Air Temperatures, Panduit White Paper RKAT02--WW-ENG, December 2012.



Panduit® SmartZone™ Solutions Software and Hardware

The Energy Efficient Data Center Cabinet System can be seamlessly integrated with all elements of the Panduit Intelligent Data Center Solution, including Overhead Cable Pathway Systems, High Speed Data Transport (HSDT) Cabling, Grounding and Bonding and Physical Infrastructure Systems.

A. About Panduit

B. Copper Systems

C. Fiber Systems

D. Faceplates, Outlet Frames & Surface Mount Boxes

E. Keystone Cabling Systems

F. Zone Cabling

G. Cable Routing Systems

H. Surface Raceway

I. Cabinets, Racks & Cable Management Systems

K. Power Management

L. Grounding & Bonding

M. Identification Products

N. Cable Management Accessories

O. Part Number Index

A. About Panduit

Net-Access™ N-Type Cabinets

Optimum Accessibility and Cable Management for High Density Applications

B. Copper Systems

Net-Access™ N-Type Cabinets are the first choice for data center managers and systems integrators specifying high density network, storage and compute applications that require optimal thermal management and the capacity to manage high cable densities.

C. Fiber Systems

Integral cabinet air seal features and integration with passive hot and cold air containment components drive efficient utilization of cooling capacity and reduce cooling energy consumption. The Net-Access™ inset frame design efficiently manages large quantities of cables and provides space for unmatched access reducing operational costs. This industry leading design also maximizes airflow and provides easy access to equipment for ongoing operational efficiencies, providing exceptional value in a 800mm (31.5") wide enclosure.

D. Faceplates, Outlet Frames & Surface Mount Boxes



- **Inset frame provides up to 10% more space for cable management and cooling airflow**

Industry leading inset cabinet frame posts create a large area for airflow to provide proper heat dissipation and enable easy access to equipment, in-cabinet ducting and cabling, speeding deployments and reducing operational costs.

E. Keystone Cabling Systems

F. Zone Cabling



- **Dual hinged doors speed deployments and moves, adds, and changes up to 30%**

IT staff is scarce, downtime is expensive. For a 120 rack dynamic data center, our cabinets save up to an hour a day, adding up to \$18,250 per year savings. Allows for simple cross patching between adjoining cabinets.

G. Cable Routing Systems

H. Surface Raceway

J. Cabinets, Racks & Cable Management Systems



- **Efficiently manage high cable densities**

Modular snap in fingers align with rack spaces to simplify cable management, providing proper bend radius control and organizing cables for faster moves, adds and changes and installations.

K. Power Management

L. Grounding & Bonding

M. Identification Products

N. Cable Management Accessories

O. Part Number Index



- **Outset Cable Entry**

Does not intrude equipment rail spacing allowing for equipment to be installed in the top RUs, increasing space utilization.





• **Open rail mounting creates more cable management space and equipment positioning flexibility**

High strength frame eliminates need for support members between rails, providing unobstructed space between the frame and the side panels. This allows for better airflow, more room for cable management, flexibility with mounting locations of equipment and compatibility for ducting solutions.



• **Vertical split side panels enable fast access to equipment**

Innovative vertical split side panels and optional vertical split hinged side panels allow fast easy access to end of row network equipment and cabling, eliminating time consuming handling. Optional end of row side panels allow easy access to the front of the cabinet. Side panels lock and unlock easily from inside the cabinet with no extra keys needed.



• **Innovative Leveling Feet Design Reduces Cabinet Installation Time up to 80%**

Heavy duty, M14 thread top drive leveling feet are easily accessed outside the equipment zone and allow cabinets to be leveled in less time than typical leveling feet. The hex head design is less prone to stripping, especially under heavy loads.



• **Bond cabinets to the telecommunications grounding infrastructure with single connection, reducing installation time**

Entire cabinet is fully electrically bonded, requiring no grounding whips to doors or side panels for protection of equipment and personnel. Integrally bonding the cabinet speeds deployment and improves efficiency of moves, adds, and changes.



Optimize the functionality of the cabinet with a full range of cable management accessories as shown on pages J.18 to J.23.

A. About Panduit

B. Copper Systems

C. Fiber Systems

D. Faceplates, Outlet Frames & Surface Mount Boxes

E. Keystone Cabling Systems

F. Zone Cabling

G. Cable Routing Systems

H. Surface Raceway

I. Cabinets, Racks & Cable Management Systems

K. Power Management

L. Grounding & Bonding

M. Identification Products

N. Cable Management Accessories

O. Part Number Index

A. About Panduit



Net-Access™ N-Type Cabinet Specifications

- Inset post design
- Welded and assembled steel frame construction
- Easy maintenance powder coat finish
- Adjustable rear equipment rails with continuous positioning
- Large cable entry/cable access
- Side panels
- Dual hinge front perforated door for maximum accessibility between adjacent cabinets with split perforated rear door with keyed swing handles
- Cabinet supplied with two sets of high density cable management fingers (SN25F)
- Cable entry holes are equipped with plastic sealing plugs
- UL 2416 standard compliant and have been static load tested to 1,360kg (3,000 lbs.)
- EIA-310-E compliant
- Rolling Load of 1,136kg (2,500 lbs.)
- Cabinet ships assembled, one per pallet
- N-Type Cabinets include hardware kit: #12-24 screws, or M6 screws and cage nuts
- Casters are supplied separately, see page J.19
- PDU brackets are supplied separately, see page J.18

B. Copper Systems

C. Fiber Systems

D. Faceplates, Outlet Frames & Surface Mount Boxes

E. Keystone Cabling Systems

F. Zone Cabling

G. Cable Routing Systems

H. Surface Raceway

J. Cabinets, Racks & Cable Management Systems

K. Power Management

L. Grounding & Bonding

M. Identification Products

N. Cable Management Accessories

O. Part Number Index

Part Number Prefix Definition

Multiple cabinet solutions to meet project goals — from standard cabinets for quick turnaround to configured cabinets that meet specific requirements to optimize cabinet functionality.

Series	Nominal Width	Height	Nominal Depth	Side Panels	Colors
N	8 = 800mm	2 = 42 RU 5 = 45 RU 8 = 48 RU	1 = 1070mm 2 = 1200mm	2 = 2 side Panels* 9 = No Side Panel	B = Black W = White

*Standard side panel.

Net-Access™ N-Type Standard Cabinets

N-Type Width Part Number	Height	Width	Depth
With Side Panels			
N8212B	42 RU	800mm	1070mm
N8512B	45 RU		
N8222B	42 RU		1200mm
N8522B	45 RU		
Without Side Panels			
N8219B	42 RU	800mm	1070mm
N8519B	45 RU		
N8229B	42 RU		1200mm
N8529B	45 RU		

- Multiple Widths
- Multiple Heights
- Multiple Depths
- Doors – Single Hinge, Dual Hinge, Split Doors, or None
- Side Panels – 0, 1, or 2
- Black, White or Gray Finish
- #12-24 Tapped or Cage Nut Rails
- Standard, VED, Integral Cabinet Top Cable Routing System, or VED and Integral Cabinet Top Cable Routing System
- Vertical Patching
- Vertical Blanking Panels
- Cable Management
- Casters
- PDU Brackets
- Combination Locks

Net-Access™ N-Type Standard Configured Cabinets

Series	Width	Height	Depth	Side Panels	Colors	Standard Options (Select Only One)
N	8 = 800mm	2 = 42 RU 5 = 45 RU 8 = 48 RU	1 = 1070mm 2 = 1200mm	2 = 2 side Panels* 9 = No Side Panel	B = Black W = White	C = Cage Nut Rails E = Single Hinge Front Door and Cage Nut Rails S = No Doors** T = Integral Cabinet Top Cable Routing System** TC = Integral Cabinet Top Cable Routing System and Cage Nut Rails U = Vertical Blanking and Cage Nut Rails V = VED Ready** Y = VED Ready and Cage Nut Rails YT = VED Ready, Cage Nut Rails, and Integral Cabinet Top Cable Routing System

*Standard side panel. **Includes #12-24 tapped equipment rails. V, Y and YT - Only available for 1200mm deep cabinets.

Standard Configurations have 6 characters with only one standard option suffix.

N	8	2	1	2	B		
---	---	---	---	---	---	--	--

Net-Access™ Cable Capacity Charts

Top Cap Opening Cable Capacity									
Opening Size	Area		Cable Capacities						
	In. ²	Cm. ²	Cat. 6A 0.354"	Cat. 6A 0.310"	Cat. 6A 0.297"	Cat. 6 0.250"	Cat. 6 0.187"	Fiber (3mm)	QuickNet™ Cassettes
5" x 3.5"	15.6	100.7	63	82	90	127	227	569	8
5" x 1.5"	6.5	42.2	26	34	37	53	95	239	8

Cable pathways (Per Side)								
Cabinet Size (mm)	Area		Cable Capacities					
	In. ²	Cm. ²	Cat. 6A 0.354"	Cat. 6A 0.310"	Cat. 6A 0.297"	Cat. 6 0.250"	Cat. 5e 0.187"	Fiber (3mm)

N-Type (Front Side)

800x1070	43.8	282.7	178	232	252	357	638	1599
800x1200	43.8	282.7	178	232	252	357	638	1599

Optimize equipment's performance with a wide range of accessories. For a full selection —see J.18 to J.23.

A. About Panduit

Net-Access™ S-Type Cabinets

Cost Effective and Versatile Cabinets for all Data Center Applications and Facilities Designs

B. Copper Systems

Net-Access™ S-Type Cabinets provide data center managers and systems integrators an unprecedented range of features in a cost effective cabinet platform for server, network, and pre-configured cabinet applications.

C. Fiber Systems

Integral cabinet air seal features and seamless integration with passive hot and cold air containment components provide efficient utilization of cooling capacity, and contribute to reduced cooling energy consumption. An innovative frame design maximizes RU utilization saving as much as 15% of the floor space while safely accommodating equipment loads. Offered in a variety of widths, heights, and depths, they can be specified for a variety of applications in any facility to meet the diverse application needs of today's data centers.

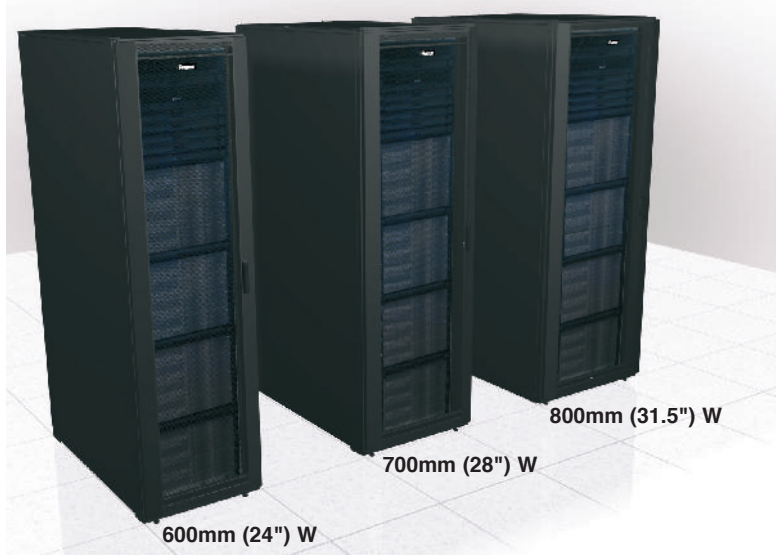
D. Faceplates, Outlet Frames & Surface Mount Boxes

E. Keystone Cabling Systems

F. Zone Cabling

G. Cable Routing Systems

H. Surface Raceway



J. Cabinets, Racks & Cable Management Systems

Large selection of standard cabinet widths, heights, and depths offered in:

- 600mm (24"), 700mm (28"), and 800mm (31.5") Widths
- 1070mm (42") and 1200mm (48") Depths
- 42 RU, 45 RU, and 48 RU Heights
- Available in black or white
- Static Load Rating 1,364 kg (3,000 lbs.)
- Rolling Load Rating 1,136 kg (2,500 lbs.)

K. Power Management

L. Grounding & Bonding

M. Identification Products

N. Cable Management Accessories

O. Part Number Index



• **Open rail mounting creates more cable management space and equipment positioning flexibility**

High strength frame eliminates need for support members between rails, providing unobstructed space between the frame and the side panels. This allows for better airflow, more room for cable management, flexibility with mounting locations of equipment and compatibility for ducting solutions.



• **Vertical split side panels**

Functional side panels that allow fast and easy access to the front or rear of the cabinet independently.





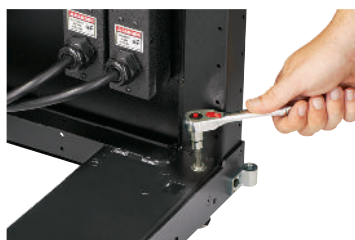
• **Out-Set Cable Entry Improves Floor Space Utilization up to 5%**

Network cable entry locations are outside of equipment area, allowing top 2 RUs to be used, optimizing cabinet utilization and saving floor space.



• **Zero RU E-Rail Vertical Patching Adds Capacity and Improves Floor Space Utilization up to 10%**

Unique Zero RU E-Rail is the industry's only vertical patching system for 600mm (24") wide cabinets integrating with Quick-Net™ Copper and Fiber Cabling Systems, optimizing cabinet utilization and saving floor space.



• **Innovative Leveling Feet Design Reduces Cabinet Installation Time up to 80%**

Heavy duty, M14 thread top drive leveling feet are easily accessed and allow cabinets to be leveled in less time than typical leveling feet.



• **Optional Front Adjustable Rails**

Optional front adjustable rails provide additional flexibility for adoption of most equipment.

A.
About
Panduit

B.
Copper
Systems

C.
Fiber
Systems

D.
Faceplates,
Outlet
Frames &
Surface
Mount Boxes

E.
Keystone
Cabling
Systems

F.
Zone
Cabling

G.
Cable
Routing
Systems

H.
Surface
Raceway

Cabinets,
Racks &
Cable
Management
Systems

K.
Power
Management

L.
Grounding
&
Bonding

M.
Identification
Products

N.
Cable
Management
Accessories

O.
Part
Number
Index

A. About Panduit



Net-Access™ S-Type Cabinet Specifications

- Welded and assembled steel frame construction
- Easy maintenance powder coat finish
- Adjustable rear equipment rails with infinite positioning
- Side panels include keyed quarter-turn latches
- Large cable entry/cable access
- PDU brackets (SPDUBRK) included
- Cable entry holes are equipped with plastic sealing plugs
- Single hinge perforated front door with keyed swing handles
- Split perforated rear door with keyed swing handle
- UL 2416 standard compliant and have been static load tested to 1,360kg (3,000 lbs.)
- EIA-310-E compliant
- Rolling Load of 1,136kg (2,500 lbs.)
- Cabinet ships assembled, one per pallet
- S-Type Cabinets include hardware kit: M6 screws and cage nuts
- Vertical airdams included
- Casters are pre-installed

B. Copper Systems

C. Fiber Systems

D. Faceplates, Outlet Frames & Surface Mount Boxes

E. Keystone Cabling Systems

F. Zone Cabling

G. Cable Routing Systems

H. Surface Raceway

J. Cabinets, Racks & Cable Management Systems

K. Power Management

L. Grounding & Bonding

M. Identification Products

N. Cable Management Accessories

O. Part Number Index

Part Number Prefix Definition

Multiple cabinet solutions to meet project goals — from standard cabinets for quick turnaround to configured cabinets that meet specific requirements to optimize cabinet functionality.

Series	Nominal Width	Height	Nominal Depth	Side Panels	Colors
S	6 = 600mm 7 = 700mm 8 = 800mm	2 = 42 RU 5 = 45 RU 8 = 48 RU	1 = 1070mm 2 = 1200mm	2 = 2 side Panels* 9 = No Side Panel	B = Black W = White

*Standard side panel.

Net-Access™ S-Type Standard Cabinets

S-Type	Height	S-Type Width			Depth
		800mm	700mm	600mm	
With Side Panels	42 RU	S8212B	S7212B	S6212B	1070mm
	45 RU	S8512B	S7512B	S6512B	
	42 RU	S8222B	S7222B	S6222B	1200mm
	45 RU	S8522B	S7522B	S6522B	
Without Side Panels	42 RU	S8219B	S7219B	S6219B	1070mm
	45 RU	S8519B	S7519B	S6519B	
	42 RU	S8229B	S7229B	S6229B	1200mm
	45 RU	S8529B	S7529B	S6529B	

Net-Access™ S-Type Standard Configured Cabinets

Series	Width	Height	Depth	Side Panels	Color	Standard Options (Select Only One)
S	6 = 600mm 7 = 700mm 8 = 800mm	2 = 42 RU 5 = 45 RU 8 = 48 RU	1 = 1070mm 2 = 1200mm	2 = 2 Side Panels* 9 = No Side Panel	B = Black W = White	A = Switch Configured with Front Cable Management (PDU bracket not included) A9 = Switch Configured with Front Cable Management and No Casters F = Vertical Cable Management Fingers P = Vertical Patching Equipment Rails S = No Doors T = Integral Cabinet Top Cable Routing System T9 = Integral Cabinet Top Cable Routing System and No Casters V = VED Ready V9 = VED Ready and No Casters 9 = No Casters

*Standard side panel. P - Only available for 600mm wide S-Type Cabinets. V and V9 - Only available for 1200mm deep cabinets.

Standard Configurations have 6 characters with only one standard option suffix.

S	6	2	1	2	B		
---	---	---	---	---	---	--	--

Net-Access™ Cable Capacity Charts

Top Cap Opening Cable Capacity									
Opening Size	Area		Cable Capacities						
	In. ²	Cm. ²	Cat. 6A 0.354"	Cat. 6A 0.310"	Cat. 6A 0.297"	Cat. 6 0.250"	Cat. 6 0.187"	Fiber (3mm)	QuickNet™ Cassettes
5" x 3.5"	15.6	100.7	63	82	90	127	227	569	8
5" x 1.5"	6.5	42.2	26	34	37	53	95	239	8

Optimize equipment's performance with a wide range of accessories. For a full selection — see pages J.18 to J.22.

Cable pathways (Per Side)								
Cabinet Size (mm)	Area		Cable Capacities					
	In. ²	Cm. ²	Cat. 6A 0.354"	Cat. 6A 0.310"	Cat. 6A 0.297"	Cat. 6 0.250"	Cat. 5e 0.187"	Fiber (3mm)

S-Type (Rear Side)

800x1070	18.5	119.4	75	98	106	150	269	673
800x1200	30.5	196.8	123	161	176	248	444	1113
700x1070	32.4	208.9	131	171	186	263	471	1181
700x1200	53.4	344.4	216	282	308	434	777	1948
800x1070	46.3	298.4	187	245	267	376	673	1688
800x1200	76.3	491.9	309	404	440	621	1110	2783

A. About Panduit

Net-Contain™ Vertical Exhaust Duct Passive Cooling for High Density Applications

B. Copper Systems

Net-Contain™ Vertical Exhaust Duct (VED) Systems optimize cooling energy utilization to support high density heat loads to enable 30kW or greater per cabinet. VEDs passively separate hot exhaust air from cooling air and direct hot exhaust air from active equipment into the Computer Room Air Handler (CRAH) air return system, allowing higher return air temperature improving CRAH and heat exchanger system efficiency up to 40% or more.

C. Fiber Systems



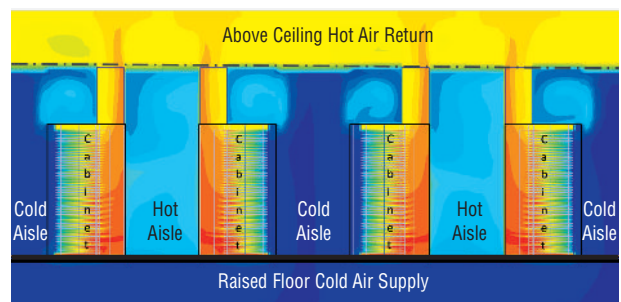
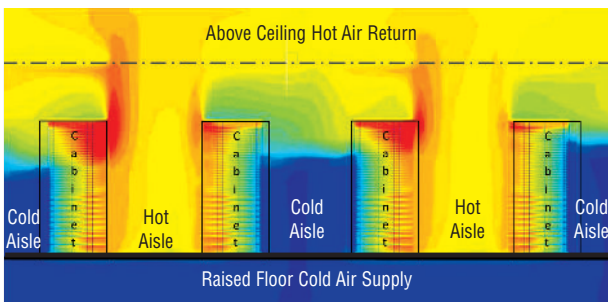
D. Faceplates, Outlet Frames & Surface Mount Boxes

E. Keystone Cabling Systems

F. Zone Cabling

G. Cable Routing Systems

H. Surface Raceway



J. Cabinets, Racks & Cable Management Systems

Typical Data Center

- Cool air does not reach the top portions of the cabinets, making servers in the top rack units vulnerable to overheating
- Hot exhaust air is isolated and ducted directly to CRAH units

Data Center Utilizing Panduit® Net-Contain™ Vertical Exhaust Duct

- Uniform distribution of cool air reaching the top of the cabinet
- Hot exhaust air follows complex airflow path back to CRAH units

K. Power Management

L. Grounding & Bonding

Net-Contain™ Vertical Exhaust Duct System Benefits

- **Flexibility and Versatility** – Multiple sizes, heights and adjustable height features allow system to adapt to virtually any data center structure including slab floors or raised floors and facilities with or without drop ceilings
- **Speed Deployment and Reduce Installation Cost** – Fast, simple assembly and integral ceiling seal reduce installation time by 30% compared to competitive offerings
- **Enhanced Data Center Environment** – Vertical Exhaust Duct and Net-Access™ Cabinets with sealed, solid rear doors dampen equipment noise
- **Bond Vertical Exhaust Duct with single connection improves system reliability and protection to personnel** – Entire VED is fully electrically bonded to the cabinet requiring no grounding whips for protection of equipment and personnel

M. Identification Products

N. Cable Management Accessories

O. Part Number Index

Net-Access™ N-Type and S-Type Vertical Exhaust Duct (VED) Cabinets (VED Sold Separately)

N-Type VED Cabinet Components:

- #12-24 tapped rails
- Dual hinge front door/solid rear door
- Two sets of vertical cable management fingers
- VED top cap ready
- Vertical blanking panels with pass-throughs
- Rear floor seals
- No casters
- No PDU brackets

S-Type VED Cabinet Components:

- Cage nut rails
- Single hinge front door/solid single hinge rear door
- VED top cap ready
- Vertical blanking panels
- Front and rear floor seals
- Casters pre-installed
- PDU brackets pre-installed
- No cable management

Vertical Exhaust Duct (VED) Cabinets	Height	N-Type Width		S-Type Width		Depth
		800mm	800mm	700mm	600mm	
With Side Panels	42 RU	N8222BV	S8222BV	S7222BV	S6222BV	1200mm
	45 RU	N8522BV	S8522BV	S7522BV	S6522BV	
	48 RU	N8822BV	S8822BV	S7822BV	S6822BV	
Without Side Panels	42 RU	N8229BV	S8229BV	S7229BV	S6229BV	1200mm
	45 RU	N8529BV	S8529BV	S7529BV	S6529BV	
	48 RU	N8829BV	S8829BV	S7829BV	S6829BV	

VED cabinets only available in 1200mm depths.
For other colors replace suffix B (Black) with W (White).

Net-Contain™ Vertical Exhaust Ducts (VEDs)



Part Number	Description	Std. Pkg. Qty.
Net-Contain™ Vertical Exhaust Duct for Net-Access™ N-Type and S-Type Cabinets		
C2VED**I1626^^	Net-Contain™ VED **mm width cabinet — 406mm (16") up to 660mm (26") height ^^ colored.	1
C2VED**I2638^^	Net-Contain™ VED **mm width cabinet — 660mm (26") up to 965mm (38") height ^^ colored.	1
C2VED**I3866^^	Net-Contain™ VED **mm width cabinet — 965mm (38") up to 1676mm (66") height ^^ colored.	1

**08 = 800mm, 07 = 700mm, 06 = 600mm
^^B1 = Black, W1 = White

A.
About
Panduit

Net-Access™ Dynamic Cabinets

The Net-Access™ Dynamic Cabinet is designed to allow the cabinet to be installed with equipment at one facility and safely shipped to another location. This is the ideal cabinet for System Integrators or Value Added Resellers as it allows the equipment to be pre-installed, cabled and ready for quick deployment. The heavy duty reinforced frame has been tested and approved to support the additional weight of equipment. A heavy duty shock pallet allows the cabinet to be shipped with equipment. The optional re-useable ramp allows the cabinet to be easily unloaded from the pallet.

B.
Copper
Systems

C.
Fiber
Systems

D.
Faceplates,
Outlet
Frames &
Surface
Mount Boxes

E.
Keystone
Cabling
Systems

F.
Zone
Cabling

G.
Cable
Routing
Systems



H.
Surface
Raceway

Net-Access™ Dynamic Cabinet Specification

- Outset post design
- Welded and assembled steel frame construction
- Easy maintenance powder coat finish
- Adjustable rear equipment rails with continuous positioning
- Fixed front equipment rails
- Integral vertical airdams with covered cable pass-through openings
- Large cable entry/cable access
- Single hinge perforated front door with keyed swing handle
- Split hinge perforated rear door with keyed swing handle
- Optional split side panels on both sides with dual latches and keyed lock
- Two sets of PDU mounting brackets
- High density cable management fingers (SN25F)
- Select cable entry holes are equipped with plastic sealing plugs, others have cutouts
- Static load of 1,361kg (3,000 lbs.)
- Rolling load of 1,136kg (2,500 lbs.)
- Dynamic shipping load of 907kg (2,000 lbs.)
- EIA-310-E compliant
- Cabinet ships assembled, one per pallet
- Hardware kit: M6 screws and cage nuts
- Factory installed casters, swivel in the rear and fixed in the front
- Adjustable leveling legs
- Single point grounding locations

J.
Cabinets,
Racks &
Cable
Management
Systems

K.
Power
Management

L.
Grounding
&
Bonding

M.
Identification
Products

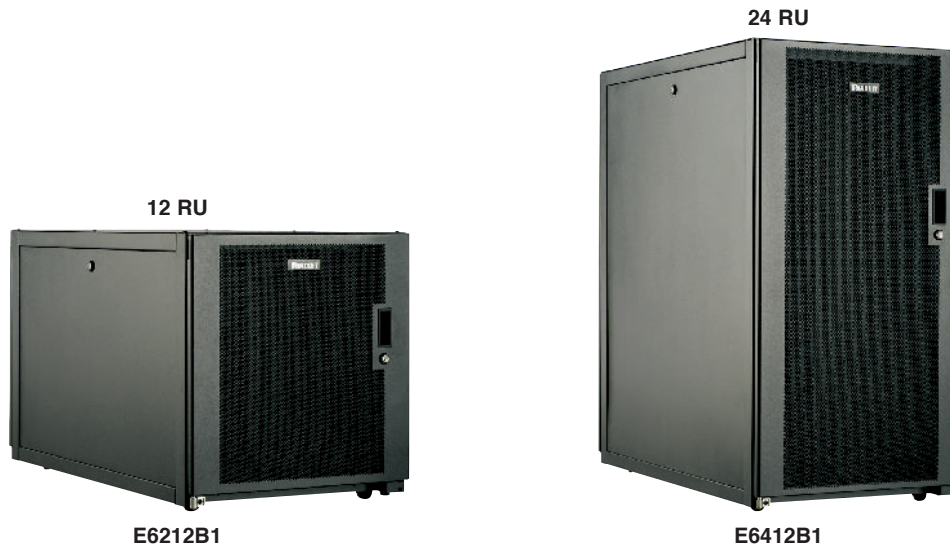
Part Number	Nominal Width	Height	Nominal Depth	Side Panels	Color	Ramp
S7222BDHRSP	700mm	42 RU	1200mm	2	Black	Yes
S7222BDHSP	700mm	42 RU	1200mm	2	Black	No
S7229BDHRSP	700mm	42 RU	1200mm	0	Black	Yes
S7229BDHSP	700mm	42 RU	1200mm	0	Black	No

N.
Cable
Management
Accessories

O.
Part
Number
Index

Net-Access™ Enterprise Cabinets

The 12 and 24 RU Net-Access™ Enterprise Cabinets store switches, patching, and servers used in office and small business areas. They are easy to roll away under a desk or in a closet. The ability of the cabinet to easily move where needed, enables fast setups and quick changes of network capabilities. Perforated doors encourage air flow to help cool equipment in tight spaces.



Net-Access™ Enterprise Cabinet Specification

- Outset post design
- Welded and assembled steel frame construction
- Easy maintenance powder coat finish
- Adjustable rear equipment rails
- Fixed front equipment rails
- Integral vertical airdams
- Dual cut outs (1.5" x 5") in the rear cap of the cabinet for cable entry/cable access
- Single hinge perforated doors on front and rear with locks
- Side panels on both sides with ¼ turn locks
- Static load of 567kg (1,250 lbs.)
- Rolling load of 227kg (500 lbs.)
- EIA-310-E compliant
- Cabinet ships either fully assembled one per pallet, flat packed one per pallet, or flat packed 5 per pallet
- Hardware kit: M6 screws and cage nuts
- Swivel casters
- Adjustable leveling legs
- Single point grounding locations at bottom of cabinet

Part Number	Nominal Width	Height	Nominal Depth	Side Panels	Color	Packaging
E6212B1	600mm	12 RU	1070mm	2	Black	Assembled on pallet
E6212B1FP	600mm	12 RU	1070mm	2	Black	Flat packed on pallet
E6212B1FP5	600mm	12 RU	1070mm	2	Black	Five units flat packed on pallet
E6412B1	600mm	24 RU	1070mm	2	Black	Assembled on pallet
E6412B1FP	600mm	24 RU	1070mm	2	Black	Flat packed on pallet
E6412B1FP5	600mm	24 RU	1070mm	2	Black	Five units flat packed on pallet

A. About Panduit

B. Copper Systems

C. Fiber Systems

D. Faceplates, Outlet Frames & Surface Mount Boxes

E. Keystone Cabling Systems

F. Zone Cabling

G. Cable Routing Systems

H. Surface Raceway

J. Cabinets, Racks & Cable Management Systems

K. Power Management

L. Grounding & Bonding

M. Identification Products

N. Cable Management Accessories

O. Part Number Index

Net-Access™ Cabinet and Thermal Management Solution for Cisco^ Nexus 7018 Switch

Panduit offers a Net-Access™ Cabinet solution designed to meet the thermal and operating requirements of the modular, high density Cisco^ Nexus 7018 Switch. Based on a standard 800mm (31.5") wide Net-Access™ N-Type Cabinet, an easy to use expansion module provides space to route and manage high densities of cables. Internal ducting enables front to back cooling air flow and improved reliability.



Net-Access™ N-Type Cabinet with Cisco^ Nexus 7018 Extension Kit Installed



● **Simple conversion for Standard 800mm N-Type Cabinet**

Extension kit enables 800mm Net-Access™ N-Type Cabinet to be extended to 1000mm (40") wide, reducing shipping costs and simplifying handling.



● **Passive inlet and exhaust duct ensures cooling airflow**

Prevents recirculation of exhaust air into the switch, ensuring lower inlet temperature and reduced fan energy consumption.



DIEBCC7018B



DIRLD0425S27W



DIRLC7018VP51



DIRLC7018VP4248



N1000EXT



NVBPA7018B



NVPDUB7018

Part Number	Description	Std. Pkg. Qty.
-------------	-------------	----------------

7018 Ducting Solution

DIEBCC7018B	Net-Direct™ Air Inlet and Exhaust Ducting (blanking panels not included) designed for Cisco^ Nexus 7018 switch in a 1000mm (W) Net-Access™ N-Type Cabinet.	1
DIRLD0425S27W	Net-Direct™ Air Inlet Ducting with left and right side blanking panels for 42/48 RU cabinet designed for Cisco^ Nexus 7018 switch in a 1000mm (W) Net-Access™ N-Type Cabinet.	1
DIRLC7018VP51	Net-Direct™ Air Inlet Ducting with left and right side blanking panels for 51 RU cabinets designed for Cisco^ Nexus 7018 switch in a 1000mm (W) Net-Access™ N-Type Cabinet.	1
DIRLC7018VP4248	Net-Direct™ Air Inlet Ducting with right side only blanking panels for 42/48 RU cabinet designed for Cisco^ Nexus 7018 switch in a 1000mm (W) Net-Access™ N-Type Cabinet.	1

7018 Cabinet Kits

N1000EXT	Extension kit to expand 800mm (W) x 1200mm (D) Net-Access™ N-Type Cabinet to 1000mm. For use with cabinets N8229BS, N8529BS, and N8829BS.	1
N1000EXTCR	Extension kit to expand 800mm (W) x 1200mm (D) N-Type Cabinets to 1000mm, includes the integral top cap. For use with cabinets N8229BS, N8529BS, and N8829BS.	1
N1000EXTCRV	Extension kit to expand 800mm (W) x 1200mm (D) N-Type Cabinets to 1000mm, VED ready. For use with cabinets N8229BS, N8529BS, and N8829BS.	1
N1000EXTV	Extension kit to expand 800mm (W) x 1200mm (D) N-Type Cabinets to 1000mm, includes the VED ready top cap. For use with cabinets N8229BS, N8529BS, and N8829BS.	1

7018 Vertical Blanking Panel

NVBPA7018B	Vertical blanking panels with pass-through holes for 42 RU through 48 RU 1000mm (W) cabinet.	1
------------	--	---

7018-Type Cabinet Split Doors

N2SD1000	One set of split doors (used front or back) for 1000mm (W) Net-Access™ N-Type Cabinet 42 RU.	1
N5SD1000	One set of split doors (used front or back) for 1000mm (W) Net-Access™ N-Type Cabinet 45 RU.	1
N8SD1000	One set of split doors (used front or back) for 1000mm (W) Net-Access™ N-Type Cabinet 48 RU.	1

7018 N-Type Cabinet PDU Bracket

NVPDUB7018	Net-Access™ N-Type PDU Bracket for 1000mm (W) cabinets.	1
------------	---	---

^ Cisco and Cisco Nexus are registered trademarks Cisco Systems Technology, Inc. and/or its affiliates in the United States and certain other countries.

Net-Access™ Cabinet Top Cable Routing System

Optimize overhead space utilization

Net-Access™ Cabinets are available with a Cabinet Top Cable Routing System that protects, routes, and manages large quantities of twisted pair data cables into and out of any Net-Access™ Cabinet. This versatile system can be integrated easily in to the top of the cabinet and easily integrates with other cable pathways used throughout the data center, providing up to a 30% reduction in installation costs.



- Available as an integral design with the cabinet or as a stand-alone accessory

- When ordered integrated into the cabinet, the cabinet top cable routing system provides up to a 30% reduction in installation costs

Part Number	N-Type Compatible	S-Type Compatible	Description	Std. Pkg. Qty.
Cabinet Top Cable Routing System				
STH61B		X	Cabinet Top Cable Routing System for a 600mm (W) x 1070mm (D) cabinet. Protects, routes and manages large quantities of cable into and out of any cabinet, Black.	1
STH62B		X	Cabinet Top Cable Routing System for a 600mm (W) x 1200mm (D) cabinet. Protects, routes and manages large quantities of cable into and out of any cabinet, Black.	1
STH71B		X	Cabinet Top Cable Routing System for a 700mm (W) x 1070mm (D) cabinet. Protects, routes and manages large quantities of cable into and out of any cabinet, Black.	1
STH72B		X	Cabinet Top Cable Routing System for a 700mm (W) x 1200mm (D) cabinet. Protects, routes and manages large quantities of cable into and out of any cabinet, Black.	1
SNTH81B	X	X	Cabinet Top Cable Routing System for a 800mm (W) x 1070mm (D) cabinet. Protects, routes and manages large quantities of cable into and out of any cabinet, Black.	1
SNTH82B	X	X	Cabinet Top Cable Routing System for a 800mm (W) x 1200mm (D) cabinet. Protects, routes and manages large quantities of cable into and out of any cabinet, Black.	1
SN7TCDW		X	Divider wall with screws for cabinet top cable routing system to enhance cable management. For 600mm and 700mm (W) cabinets, Black.	1
SN8TCDW	X	X	Divider wall with screws for cabinet top cable routing system to enhance cable management. For 800mm (W) cabinet, Black.	1
SN1070CREC	X	X	End of row cap kit for cabinet top cable routing system. Includes brackets and screws for 1070mm (D) cabinet, Black.	1
SN1200CREC	X	X	End of row cap kit for cabinet top cable routing system. Includes brackets and screws for 1200mm (D) cabinet, Black.	1
SN1200VCREC	X	X	End of row cap kit for cabinet top cable routing system. Includes brackets and screws for 1200mm (D) VED cabinet, Black.	1

For other colors replace suffix B (Black) with W (White).



SN7TCDW
SN8TCDW



SN1070CREC
SN1200CREC
SN1200VCREC

A.
About
Panduit

B.
Copper
Systems

C.
Fiber
Systems

D.
Faceplates,
Outlet
Frames &
Surface
Mount Boxes

E.
Keystone
Cabling
Systems

F.
Zone
Cabling

G.
Cable
Routing
Systems

H.
Surface
Raceway

Cabinets,
Racks &
Cable
Management
Systems

K.
Power
Management

L.
Grounding
&
Bonding

M.
Identification
Products

N.
Cable
Management
Accessories

O.
Part
Number
Index

Net-Access™ Cabinet Accessories

Part Number	N-Type Compatible	S-Type Compatible	Description	Std. Pkg. Qty.
PDU Brackets and Cable Management				
SN15F	X	X	Finger Kit, 100mm (3.9") depth that attaches to posts on 42 RU through 48 RU cabinets. Kit includes fingers sections to complete two sides of posts. 4 each 5 RU right hand short finger sections, 4 each 5 RU left hand short finger sections, 3 each 8 RU right hand short finger sections and 3 each 8 RU left hand short finger sections.	1
SN25F	X	X	Finger Kit, 150mm (5.9") depth that attaches to posts on 42 RU through 48 RU cabinets. Kit includes fingers sections to complete two sides of posts. 4 each 5 RU right hand long finger sections, 4 each 5 RU left hand long finger sections, 3 each 8 RU right hand long finger sections and 3 each 8 RU left hand long finger sections.	1
S7VPPB		X	Vertical patching bracket for 700mm wide cabinets. Bracket to vertically mount 1 RU EI 19" products including copper and fiber patch panels and power outlet units.	1
SN8VPPB	X	X	Vertical patching bracket for 800mm wide cabinets. Bracket to vertically mount 1 RU EI 19" products including copper and fiber patch panels and power outlet units.	1
NERSS	X		End of row slack spool. Network cabinet end of row channel slack spool. Package includes 1 one left and one right spool bracket, 2 molded spools and one hardware kit. Mounts to side of cabinet posts.	1
NACSS	X		Center slack spool for between cabinets, adjustable 210mm (8.3") to 267mm (10.5"). Network cabinet adjustable center slack spool. Package includes 1 center spool bracket, 1 molded spool and one hardware kit. Mounts between 2 network cabinets to side of cabinet posts.	1
NVPDUB	X		PDU brackets, sold in pairs. Bracket for vertically mounting PDU's, not wider than 2.5". Mounts to cabinet posts.	1
SPDUBRK		X	PDU brackets, sold in pairs. Bracket for vertically mounting PDU's, not wider than 2.5". Mounts to cabinet posts.	1
S2BRK6		X	Combination PDU/cable management bracket, 152mm (6") wide full length for 42 RU through 48 RU cabinet. Will accept our S2DR (D-rings) and our S2LR (L-rings).	1
S2BRK12		X	Combination PDU/cable management bracket, 305mm (12") wide full length for 42 RU through 48 RU cabinet. Will accept our S2DR (D-rings) and our S2LR (L-rings).	1
S1DR		X	1 RU D-ring cable retainer, 80mm (3.1") x 40mm (1.5"), bag of 8 pcs, attaches to S2BRK6/S2BRK12.	1
S2DR		X	2 RU D-ring cable retainer, 80mm (3.1") x 80mm (3.1"), bag of 8 pcs, attaches to S2BRK6/S2BRK12.	1
S1LR		X	1 RU L-ring cable retainer, 60mm (2.2") x 100mm (3.8"), bag of 8 pcs, attaches to S2BRK6/S2BRK12.	1
S2LR		X	2 RU L-ring cable retainer, 85mm (3.4") x 100mm (3.8"), bag of 8 pcs, attaches to S2BRK6/S2BRK12.	1



SN15F



SN25F



S7VPPB



SN8VPPB



NERSS



NACSS



NVPDUB



SPDUBRK



S2BRK6



S2BRK12



S1DR



S2DR



S1LR



S2LR

A. About Panduit

B. Copper Systems

C. Fiber Systems

D. Faceplates, Outlet Frames & Surface Mount Boxes

E. Keystone Cabling Systems

F. Zone Cabling

G. Cable Routing Systems

H. Surface Raceway

J. Cabinets, Racks & Cable Management Systems

K. Power Management

L. Grounding & Bonding

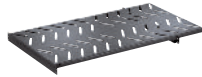
M. Identification Products

N. Cable Management Accessories

O. Part Number Index

Continues on next page

Net-Access™ Cabinet Accessories (continued)



RSHLF23
RSHLF



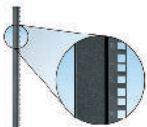
NCSTR4



SCSTR4



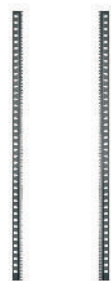
CCL3



SN*RC



N*RT



S*RP

Part Number	N-Type Compatible	S-Type Compatible	Description	Std. Pkg. Qty.
Shelves				
RSHLF23	X	X	Shelf Kit includes mounting bracket and screws. Shelf dimensions: 44mm (1.7")H x 483mm (19")W x 584mm (23")D. Load rating 275 lbs. (124kg).	1
RSHLF	X	X	Shelf Kit includes mounting bracket and screws. Shelf dimensions: 44mm (1.7")H x 483mm (19")W x 762mm (30")D. Load rating 275 lbs. (124kg).	1

Casters and Locks

NCSTR4	X		Caster Kit. Two fixed casters for front of cabinet, two swivel casters for rear of cabinet, four mounting plates and 24 screws. Casters add 24mm (1") to height of cabinet.	1
SCSTR4		X	Caster Kit. Two fixed casters for front of cabinet, two swivel casters for rear of cabinet, and 16 screws. Casters add 24mm (1") to height of cabinet.	1
CCL3	X	X	Three digit combination lock with key over ride for single hinge or split doors. This combination lock can be installed on the S or N style cabinet single hinge front doors and rear perforated split doors. It easily replaces the standard locks. Combo locks for dual hinged doors are only available factory installed in the cabinet when configured as such.	1

Equipment Rails and Rail Kits

SN2RC	X	X	Cage nut rear rails for 42 RU cabinet, sold in pairs.	1
SN5RC	X	X	Cage nut rear rails for 45 RU cabinet, sold in pairs.	1
SN8RC	X	X	Cage nut rear rails for 48 RU cabinet, sold in pairs.	1
N2RT	X		Tapped (#12-24) rear rails for 42 RU cabinet, sold in pairs.	1
N5RT	X		Tapped (#12-24) rear rails for 45 RU cabinet, sold in pairs.	1
N8RT	X		Tapped (#12-24) rear rails for 48 RU cabinet, sold in pairs.	1
S2RP		X	Vertical patching cage nut rails for 42 RU x 600mm (W) (Zero RU QuickNet) cabinet.	1
S5RP		X	Vertical patching cage nut rails for 45 RU x 600mm (W) (Zero RU QuickNet) cabinet.	1
S8RP		X	Vertical patching cage nut rails for 48 RU x 600mm (W) (Zero RU QuickNet) cabinet.	1
N2RCFR	X		Cage nut front and rear equipment rail kit for 42 RU cabinets.	1
N5RCFR	X		Cage nut front and rear equipment rail kit for 45 RU cabinets.	1
N8RCFR	X		Cage nut front and rear equipment rail kit for 48 RU cabinets.	1
N2RTFR	X		Tapped (#12-24) front and rear equipment rail kit for 42 RU cabinets.	1
N5RTFR	X		Tapped (#12-24) front and rear equipment rail kit for 45 RU cabinets.	1
N8RTFR	X		Tapped (#12-24) front and rear equipment rail kit for 48 RU cabinets.	1

Continues on next page

A.
About
Panduit

Net-Access™ Cabinet Accessories (continued)

B.
Copper
Systems

C.
Fiber
Systems

D.
Faceplates,
Outlet
Frames &
Surface
Mount Boxes

E.
Keystone
Cabling
Systems

F.
Zone
Cabling

G.
Cable
Routing
Systems

H.
Surface
Raceway

J.
Cabinets,
Racks &
Cable
Management
Systems

K.
Power
Management

L.
Grounding
&
Bonding

M.
Identification
Products

N.
Cable
Management
Accessories

O.
Part
Number
Index

Part Number	N-Type Compatible	S-Type Compatible	Description	Std. Pkg. Qty.
Single and Dual Hinge Doors				
N82SHDB	X		Single hinge perforated door for 42 RU 800mm wide cabinet. Single hinge door quickly reverses from left-hinging to right hinging for increased data center design flexibility. Open perforated design enables optimum air flow to equipment, Black.	1
N85SHDB	X		Single hinge perforated door for 45 RU 800mm wide cabinet. Single hinge door reverses from left-hinging to right hinging for increased data center design flexibility. Open perforated design enables optimum air flow to equipment, Black.	1
N88SHDB	X		Single hinge perforated door for 48 RU 800mm wide cabinet. Single hinge door reverses from left-hinging to right hinging for increased data center design flexibility. Open perforated design enables optimum air flow to equipment, Black.	1
N82DHDB	X		Dual hinge perforated door for 42 RU 800mm wide cabinet. Dual hinge door opens to the left and right to provide maximum accessibility to the cabinet. Open perforated design enables optimum airflow to equipment, Black.	1
N85DHDB	X		Dual hinge perforated door for 45 RU 800mm wide cabinet. Dual hinge door opens to the left and right to provide maximum accessibility to the cabinet. Open perforated design enables optimum airflow to equipment, Black.	1
N88DHDB	X		Dual hinge perforated door for 48 RU 800mm wide cabinet. Dual hinge door opens to the left and right to provide maximum accessibility to the cabinet. Open perforated design enables optimum airflow to equipment, Black.	1
S62SHDB		X	Single hinge perforated door for 42 RU 600mm wide cabinet. Single hinge door reverses from left-hinging to right hinging for increased data center design flexibility. Open perforated design enables optimum air flow to equipment, Black.	1
S65SHDB		X	Single hinge perforated door for 45 RU 600mm wide cabinet. Single hinge door reverses from left-hinging to right hinging for increased data center design flexibility. Open perforated design enables optimum air flow to equipment, Black.	1
S68SHDB		X	Single hinge perforated door for 48 RU 600mm wide cabinet. Single hinge door reverses from left-hinging to right hinging for increased data center design flexibility. Open perforated design enables optimum air flow to equipment, Black.	1
S72SHDB		X	Single hinge perforated door for 42 RU 700mm wide cabinet. Single hinge door reverses from left-hinging to right hinging for increased data center design flexibility. Open perforated design enables optimum air flow to equipment, Black.	1
S75SHDB		X	Single hinge perforated door for 45 RU 700mm wide cabinet. Single hinge door reverses from left-hinging to right hinging for increased data center design flexibility. Open perforated design enables optimum air flow to equipment, Black.	1
S78SHDB		X	Single hinge perforated door for 48 RU 700mm wide cabinet. Single hinge door reverses from left-hinging to right hinging for increased data center design flexibility. Open perforated design enables optimum air flow to equipment, Black.	1
S82SHDB		X	Single hinge perforated door for 42 RU 800mm wide cabinet. Single hinge door reverses from left-hinging to right hinging for increased data center design flexibility. Open perforated design enables optimum air flow to equipment, Black.	1
S85SHDB		X	Single hinge perforated door for 45 RU 800mm wide cabinet. Single hinge door reverses from left-hinging to right hinging for increased data center design flexibility. Open perforated design enables optimum air flow to equipment, Black.	1
S88SHDB		X	Single hinge perforated door for 48 RU 800mm wide cabinet. Single hinge door reverses from left-hinging to right hinging for increased data center design flexibility. Open perforated design enables optimum air flow to equipment, Black.	1



S**SHDB

Continues on next page

Net-Access™ Cabinet Accessories (continued)



SN**SDB

Part Number	N-Type Compatible	S-Type Compatible	Description	Std. Pkg. Qty.
Split Doors				
S62SDB		X	Split doors for 42 RU 600mm wide cabinet. Split doors open in the middle, minimize the door swing footprint and can be used in narrow data center hot aisles. Perforated design provides optimum air flow, Black.	1
S65SDB		X	Split doors for 45 RU 600mm wide cabinet. Split doors open in the middle, minimize the door swing footprint and can be used in narrow data center hot aisles. Perforated design provides optimum air flow, Black.	1
S68SDB		X	Split doors for 48 RU 600mm wide cabinet. Split doors open in the middle, minimize the door swing footprint and can be used in narrow data center hot aisles. Perforated design provides optimum air flow, Black.	1
S72SDB		X	Split doors for 42 RU 700mm wide cabinet. Split doors open in the middle, minimize the door swing footprint and can be used in narrow data center hot aisles. Perforated design provides optimum air flow, Black.	1
S75SDB		X	Split doors for 45 RU 700mm wide cabinet. Split doors open in the middle, minimize the door swing footprint and can be used in narrow data center hot aisles. Perforated design provides optimum air flow, Black.	1
S78SDB		X	Split doors for 48 RU 700mm wide cabinet. Split doors open in the middle, minimize the door swing footprint and can be used in narrow data center hot aisles. Perforated design provides optimum air flow, Black.	1
SN82SDB	X	X	Split doors for 42 RU 800mm wide cabinet. Split doors open in the middle, minimize the door swing footprint and can be used in narrow data center hot aisles. Perforated design provides optimum air flow, Black.	1
SN85SDB	X	X	Split doors for 45 RU 800mm wide cabinet. Split doors open in the middle, minimize the door swing footprint and can be used in narrow data center hot aisles. Perforated design provides optimum air flow, Black.	1
SN88SDB	X	X	Split doors for 48 RU 800mm wide cabinet. Split doors open in the middle, minimize the door swing footprint and can be used in narrow data center hot aisles. Perforated design provides optimum air flow, Black.	1

Solid Doors for use with VED Cabinets

S62SSHDB		X	Solid rear door for 42 RU x 600mm (W) cabinet, Black.	1
S65SSHDB		X	Solid rear door for 45 RU x 600mm (W) cabinet, Black.	1
S68SSHDB		X	Solid rear door for 48 RU x 600mm (W) cabinet, Black.	1
S72SSHDB		X	Solid rear door for 42 RU x 700mm (W) cabinet, Black.	1
S75SSHDB		X	Solid rear door for 45 RU x 700mm (W) cabinet, Black.	1
S78SSHDB		X	Solid rear door for 48 RU x 700mm (W) cabinet, Black.	1
SN82SHDB	X	X	Solid rear door for 42 RU x 800mm (W) cabinet, Black.	1
SN85SHDB	X	X	Solid rear door for 45 RU x 800mm (W) cabinet, Black.	1
SN88SHDB	X	X	Solid rear door for 48 RU x 800mm (W) cabinet, Black.	1

A.
About Panduit

B.
Copper Systems

C.
Fiber Systems

D.
Faceplates, Outlet Frames & Surface Mount Boxes

E.
Keystone Cabling Systems

F.
Zone Cabling

G.
Cable Routing Systems

H.
Surface Raceway

Cabinets, Racks & Cable Management Systems

K.
Power Management

L.
Grounding & Bonding

M.
Identification Products

N.
Cable Management Accessories

O.
Part Number Index

Continues on next page

A. About Panduit

B. Copper Systems

C. Fiber Systems

D. Faceplates, Outlet Frames & Surface Mount Boxes

E. Keystone Cabling Systems

F. Zone Cabling

G. Cable Routing Systems

H. Surface Raceway

J. Cabinets, Racks & Cable Management Systems

K. Power Management

L. Grounding & Bonding

M. Identification Products

N. Cable Management Accessories

O. Part Number Index

Net-Access™ Cabinet Accessories (continued)



N**SPS



N**SPH



S**SPSB

Part Number	N-Type Compatible	S-Type Compatible	Description	Std. Pkg. Qty.
Side Panels				
N21SPS	X		Split side panel for 42 RU 1070mm depth cabinet. Removable solid side panels covers and protects cable and equipment, Black.	1
N51SPS	X		Split side panel for 45 RU 1070mm depth cabinet. Removable solid side panels covers and protects cable and equipment, Black.	1
N81SPS	X		Split side panel for 48 RU 1070mm depth cabinet. Removable solid side panels covers and protects cable and equipment, Black.	1
N22SPS	X		Split side panel for 42 RU 1200mm depth cabinet. Removable solid side panels covers and protects cable and equipment, Black.	1
N52SPS	X		Split side panel for 45 RU 1200mm depth cabinet. Removable solid side panels covers and protects cable and equipment, Black.	1
N82SPS	X		Split side panel set for 48 RU 1200mm depth cabinet. Removable solid side panels covers and protects cable and equipment, Black.	1
N21SPH	X		Split hinged side panel for end of row application for 42 RU 1070mm depth cabinet. Removable solid side panels covers and protects cable and equipment, Black.	1
N51SPH	X		Split hinged side panel for end of row application for 45 RU 1070mm depth cabinet. Removable solid side panels covers and protects cable and equipment, Black.	1
N81SPH	X		Split hinged side panel for end of row application for 48 RU 1070mm depth cabinet. Removable solid side panels covers and protects cable and equipment, Black.	1
N22SPH	X		Split hinged side panel for end of row application for 42 RU 1200mm depth cabinet. Removable solid side panels covers and protects cable and equipment, Black.	1
N52SPH	X		Split hinged side panel for end of row application for 42 RU 1200mm depth cabinet. Removable solid side panels covers and protects cable and equipment, Black.	1
N82SPH	X		Split hinged side panel for end of row application for 42 RU 1200mm depth cabinet. Removable solid side panels covers and protects cable and equipment, Black.	1
S21SPSB		X	Split latching side panels for middle of row application for 42 RU x 1070mm (D) cabinet, Black.	1
S51SPSB		X	Split latching side panels for middle of row application for 45 x RU 1070mm (D) cabinet, Black.	1
S81SPSB		X	Split latching side panels for middle of row application for 48 x RU 1070mm (D) cabinet, Black.	1
S22SPSB		X	Split latching side panels for middle of row application for 42 x RU 1200mm (D) cabinet, Black.	1
S52SPSB		X	Split latching side panels for middle of row application for 45 x RU 1200mm (D) cabinet, Black.	1
S82SPSB		X	Split latching side panels for middle of row application for 48 x RU 1200mm (D) cabinet, Black.	1
S21SPSE		X	Split side panel for end of row application for 42 RU 1070mm depth cabinet. Removable solid side panels covers and protects cable and equipment, Black.	1

Also available in white.

Continues on next page

Net-Access™ Cabinet Accessories (continued)



S**SPSE

Part Number	N-Type Compatible	S-Type Compatible	Description	Std. Pkg. Qty.
Side Panels (continued)				
S51SPSE		X	Split side panel for end of row application for 45 RU 1070mm depth cabinet. Removable solid side panels covers and protects cable and equipment, Black.	1
S81SPSE		X	Split side panel for end of row application for 48 RU 1070mm depth cabinet. Removable solid side panels covers and protects cable and equipment, Black.	1
S22SPSE		X	Split side panel for end of row application for 42 RU 1200mm depth cabinet. Removable solid side panels covers and protects cable and equipment, Black.	1
S52SPSE		X	Split side panel for end of row application for 45 RU 1200mm depth cabinet. Removable solid side panels covers and protects cable and equipment, Black.	1
S82SPSE		X	Split side panel for end of row application for 48 RU 1200mm depth cabinet. Removable solid side panels covers and protects cable and equipment, Black.	1

Also available in white.

Thermal Management Cabinet Accessories



NVBP

Part Number	N-Type Compatible	S-Type Compatible	Description	Std. Pkg. Qty.
Vertical Blanking Panels				
NVBP	X		Vertical blanking panels with pass-through holes for 42 RU through 48 RU 800mm (W) cabinets.	1
S6VBPN		X*	Vertical blanking panel for 600mm (W) cabinets.	1
S7VBPN		X*	Vertical blanking panel for 700mm (W) cabinets.	1
S8VBPN		X*	Vertical blanking panel for 800mm (W) cabinets with 25mm (1") x 127mm (5") knock-outs.	1

Floor Seals

N2EOR1BA1070B1	X		End of row floor seal for 1070mm (D) cabinet.	1
N2EOR1CA1200B1	X		End of row floor seal for 1200mm (D) cabinet.	1
S2EOR1BA1070B1		X	End of row floor seal for 1070mm (D) cabinet.	1
S2EOR1CA1200B1		X	End of row floor seal for 1200mm (D) cabinet.	1
C2FAB06A1200B1		X	Front or back floor seal for 600mm (W) cabinet.	1
C2FAB07A1200B1		X	Front or back floor seal for 700mm (W) cabinet.	1
C2FAB08A1200B1	X	X	Front or back floor seal for 800mm (W) cabinet.	1

*For use with S-Type switch configured cabinets.



N2EOR1BA1070B1
N2EOR1CA1200B1



C2FAB**A1200B1

A. About Panduit

B. Copper Systems

C. Fiber Systems

D. Faceplates, Outlet Frames & Surface Mount Boxes

E. Keystone Cabling Systems

F. Zone Cabling

G. Cable Routing Systems

H. Surface Raceway

Cabinets, Racks & Cable Management Systems

K. Power Management

L. Grounding & Bonding

M. Identification Products

N. Cable Management Accessories

O. Part Number Index

Continues on next page

A. About Panduit

Net-Contain™ Universal Containment System

The Universal Containment System allows user to go back and reclaim underutilized cooling capacity, reduce energy expense and reduce OpEx by retrofitting the existing data center with an innovative containment system. The system includes independent support structure, sliding doors, vertical blanking panels, and roof structure.



B. Copper Systems

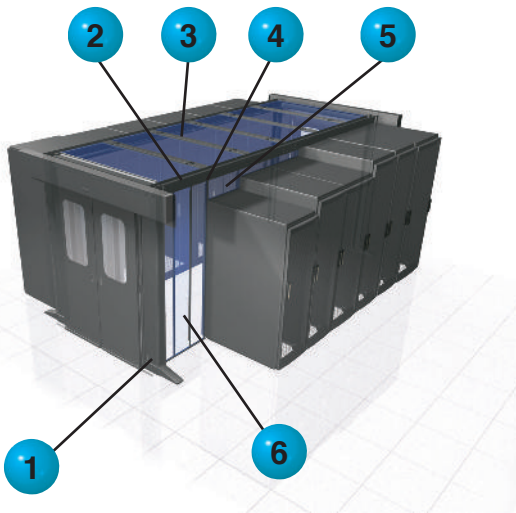
This offering can be configured in Vertical Wall (Hot Aisle Containment) and Roof Containment (Cold Aisle Containment) and allows the addition of cabinets (Panduit or non-Panduit) of varying sizes and design as needs dictate, reducing deployment time and capital investment.

Contact Panduit for more information or visit: www.panduit.com/universalaislecontainment

C. Fiber Systems

D. Faceplates, Outlet Frames & Surface Mount Boxes

E. Keystone Cabling Systems



F. Zone Cabling



G. Cable Routing Systems

H. Surface Raceway

Roof Containment

Typically used for Passive Cold Aisle Containment; deployed either on raised floor or within-row cooling.

Vertical Wall Containment

Typically used for Passive Hot Aisle Containment or Ceiling Discharge Cold Aisle Containment.

J. Cabinets, Racks & Cable Management Systems

K. Power Management

L. Grounding & Bonding

M. Identification Products

N. Cable Management Accessories

O. Part Number Index

Part Number	Description
1 CUEFRT**ST^^	Net-Contain™ End of Row Frames
2 CUWBSS**ST^^	Net-Contain™ Wall Beam
3 CUSMPR52ST01NC	Net-Contain™ Mid-Span Cabinet Support
4 CURFS06F**HB^^	Net-Contain™ Integral Ceiling Structures
5 CUTBPR0610HBN1	Net-Contain™ Top of Cabinet Blanking Panel
6 CUFBPR**06HB^^	Net-Contain™ Full Blanking Panel
7 C2HACERI1626^^	Net-Contain™ End of Row Adjustable Vertical Wall
8 C2HAC**I1626^^	Net-Contain™ Adjustable Height Vertical Wall
9 CUVWB12S12ST^^	Net-Contain™ Vertical Wall Brace
10 CUVWA06S**ST^^	Net-Contain™ Vertical Wall Adapter
11 C2CACT5F**SD^^	Net-Contain™ Aisle Containment Sliding Door

^^B1 = Black, W1 = White.

**Please reference www.panduit.com for information on the Net-Contain Universal Containment System.

Continues on next page



Part Number	Description	Std. Pkg. Qty.
-------------	-------------	----------------

End of Row Frame for Roofing

CUEFRT8F**ST^^	UAC End of Row Frame for Roofing – 42/45 RU high.	1
CUEFRT9F**ST^^	UAC End of Row Frame for Roofing – 48/52 RU high.	1

**04 = 4ft. (1219mm) aisle width, 06 = 6ft. (1829mm aisle width); ^^ B1 = Black, W1 = White.

Mid-Span Post

CUSMPR52ST01B1	Mid-Span Post 42/52 RU high.	1
----------------	------------------------------	---

Mid-Span Cabinet Support

CUCMSS**ST01NC	Mid-Span Cabinet Support.	1
----------------	---------------------------	---

**03 = 0.98ft. (300mm), 06 = 1.97ft. (600mm)

Aisle Containment Sliding Doors

C2CACT5F**SD^^	Sliding Door CAC for **ft. (**mm) aisle-capable of 42/45 RU ^^ colored.	1
----------------	---	---

**= 04 = 4ft. (1200mm), 06 = 6ft. (1800mm); ^^ B1 = Black, W1 = White.

Integral Ceiling Structures

CURFS06F**HB^^	600mm Roofing Section.	1
CURFS07F**HB^^	700mm Roofing Section.	1
CURFS08F**HB^^	800mm Roofing Section.	1

**04 = 4ft. (1200mm) aisle width, 06 = 6ft. (1800mm aisle width); ^^ B1 = Black, W1 = White.

End of Row Frame for Vertical Walls 42/45 RU High

CUEFVT8F04ST^^	End of Row Frame for Vertical Walls – 42/45RU – 4ft. (1200mm) aisle width.	1
----------------	--	---

^^ B1 = Black, W1 = White.

Adjustable End of Row Vertical Wall

C2HACERI1626^^	Adjustable End of Row Vertical Wall (16" – 26") for 900mm/1000mm/1200mm aisle widths.	1
C2HACERI2638^^	Adjustable End of Row Vertical Wall (26" – 38") for 900mm/1000mm/1200mm aisle widths	1
C2HACERI3866^^	Adjustable End of Row Vertical Wall (38" – 66") for 900mm/1000mm/1200mm aisle widths.	1

^^ B1 = Black, W1 = White.

Vertical Wall Adapter

CUVWA06S**ST^^	Vertical Wall Adapter.	1
----------------	------------------------	---

**06 = 1.97ft. (600mm), 07 = 2.30ft. (700mm), 08 = 2.62ft. (800mm); ^^ B1 = Black, W1 = White.

Adjustable Height Vertical Walls

C2HAC**I1626^^	Adjustable Vertical Wall (16" – 26").	1
C2HAC**I2638^^	Adjustable Vertical Wall (26" – 38").	1
C2HAC**I3866^^	Adjustable Vertical Wall (38" – 66").	1

**06 = 1.97ft. (600mm), 07 = 2.30ft. (700mm), 08 = 2.62ft. (800mm); ^^ B1 = Black, W1 = White.

Vertical Wall Brace

CUVWB12S12ST^^	Vertical Wall Brace, 4ft. (1200mm) aisle width.	1
----------------	---	---

^^ B1 = Black, W1 = White.

Wall Beam

CUWBSS**ST01^^	Wall Beam, 1 piece.	1
CUWBPS**ST02^^	Wall Beam, 2 pieces.	1

**06 = 1.97ft. (600mm), 07 = 2.30ft. (700mm), 08 = 2.62ft. (800mm); and 24 = 7.87ft. (2400mm); ^^ B1 = Black, W1 = White.

Full Blanking Panel

CUFBPR**06HB^^	Full Blanking Panel 600mm (W).	1
----------------	--------------------------------	---

**42 = 42 RU, 45 = 45 RU, 48 = 48 RU, 52 = 52 RU; ^^ B1 = Black, W1 = White.

Contact Panduit for more information or refer to www.panduit.com/universallaislecontainment

A.
About
Panduit

B.
Copper
Systems

C.
Fiber
Systems

D.
Faceplates,
Outlet
Frames &
Surface
Mount Boxes

E.
Keystone
Cabling
Systems

F.
Zone
Cabling

G.
Cable
Routing
Systems

H.
Surface
Raceway

I.
Cabinets,
Racks &
Cable
Management
Systems

K.
Power
Management

L.
Grounding
&
Bonding

M.
Identification
Products

N.
Cable
Management
Accessories

O.
Part
Number
Index

Continues on next page

A. About Panduit

B. Copper Systems

C. Fiber Systems

D. Faceplates, Outlet Frames & Surface Mount Boxes

E. Keystone Cabling Systems

F. Zone Cabling

G. Cable Routing Systems

H. Surface Raceway

J. Cabinets, Racks & Cable Management Systems

K. Power Management

L. Grounding & Bonding

M. Identification Products

N. Cable Management Accessories

O. Part Number Index



CUTBPR0610HBN1

Part Number	Description	Std. Pkg. Qty.
Top of Cabinet Blanking Panel		
CUTBPR0610HBN1	Top of Cabinet Blanking Panel 600mm high x 1000mm wide.	1
End of Row Cap		
CUEOR09CPB1	900mm aisle width End of Row Cap - compatible with 42 RU, 45 RU, 48 RU and 52 RU cabinets.	1
CUEOR12CPB1	1200mm aisle width End of Row Cap - compatible with 42 RU, 45 RU, 48 RU and 52 RU cabinets.	1
CUEOR18CPB1	1800mm aisle width End of Row Cap - compatible with 42 RU, 45 RU, 48 RU and 52 RU cabinets.	1

Contact Panduit for more information or refer to www.panduit.com/universaislecontainment

Net-Contain™ Cabinet Supported Cold Aisle/Hot Aisle Containment

The Net-Contain™ Cabinet Supported Cold Aisle Containment (CAC) System provides a physical separation between the cold air and the hot exhaust air by enclosing the cold aisle. The goal of a CAC system is to supply cold air to the cold aisle where the equipment air intakes are located to optimize airflow distribution and improve cooling system thermal performance. As a result, a cold aisle system is typically used in high-density data centers because it is more efficient to direct cold air onto densely populated racks than to cool the entire room.

The Net-Contain™ Cabinet Supported Hot Aisle Containment (HAC) System provides a physical separation between the cold air and the hot exhaust air by enclosing the hot aisle. The goal of a HAC system is to capture all of the cabinet exhaust air and return it to the cooling units. HAC optimizes airflow distribution and cooling system performance. The remaining area outside of the HAC becomes a cold room with ambient air temperature close to the supply air temperature.

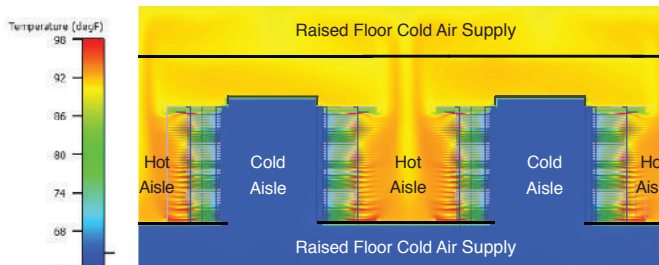
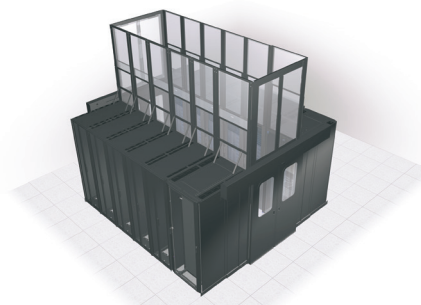
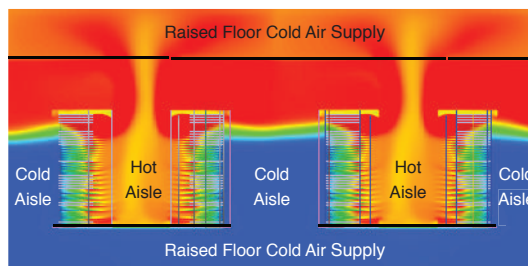
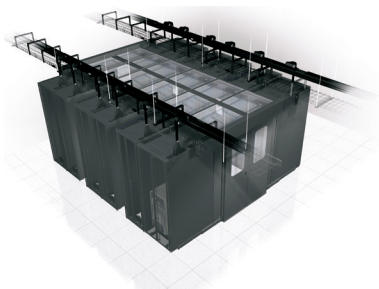
This integrated system is compatible with numerous Panduit product lines including; Net-Access™ N-Type and S-Type Cabinets, FiberRunner®, and Wyr-Grid® Overhead Cable Routing Systems.

Benefits

Energy Efficiency: Prevents hot spots and allows installation of high-density server cabinets close together in new builds or existing data centers, reducing the need for extra real estate and CRAH units lowering operating costs.

Optimized Airflow Distribution: Prevents mixing of cold and hot air streams; eliminates recirculation of hot air to cabinet inlets; provides uniform temperature at the inlets of IT equipment; prevents cold air bypass optimizing cool air delivery.

Improves Thermal Performance: Allows raising supply air set point temperature; higher return air temperature increases the thermal efficiency of cooling units, reducing cooling energy cost up to 25 – 30%.



Net-Contain™ Aisle Containment Systems

Panduit's Passive Cold Aisle Containment (CAC) and Hot Aisle Containment (HAC) Systems provide a physical separation between the cold air and the hot exhaust air. This integrated system is compatible with numerous Panduit product lines including; Net-Access™ N-Type and S-Type Cabinets, FiberRunner®, and Wyr-Grid® Overhead Cable Routing Systems.

Net-Contain™ Passive Cold Aisle Containment



C2CACT5F**SD**



C2CAC06F**IR**



C2CAC**F08WP**

Part Number	Description	Std. Pkg. Qty.
-------------	-------------	----------------

Aisle Containment Sliding Doors

C2CACT5F**SD**	Sliding Door CAC for either 4 ft. or 6 ft. aisle – capable of 42 up to 45 RU – Black or White available.	1
----------------	--	---

** 04 = 4ft. (1200mm), 06 = 6ft. (1800mm); ^^ = B1 = Black, W1 = White.

Integral Low Profile Ceiling Structure for Net-Access™ N-Type and S-Type Cabinets

C2CAC06F**IR**	(CAC) Integral Roof for 600mm width cabinet with 4 ft. or 6 ft. aisle width – Black or White available.	1
C2CAC07F**IR**	(CAC) Integral Roof for 700mm width cabinet with 4 ft. or 6 ft. aisle width – Black or White available.	1
C2CAC08F**IR**	(CAC) Integral Roof for 800mm width cabinet with 4 ft. or 6 ft. aisle width – Black or White available.	1

** 04 = 4ft. (1200mm), 06 = 6ft. (1800mm); ^^ = B1 = Black, W1 = White.

Integral Roof Wall Panels

C2CAC**F08WP**	Integral Roof Wall Panel for 600, 700 or 800mm width cabinet – Black or White available.	1
----------------	--	---

** 06 = 7.97 ft. (600mm), 07 = 2.30 ft. (700mm), 08 = 2.62 ft. (800mm); ^^ = B1 = Black, W1 = White.

Row Base Cooling Blanking Panels

C2CAC**ABWPA**	For cold aisle containment systems using row base cooling equipment.	1
----------------	--	---

** 03 = 0.98 ft. (300mm), 04 = 7.37 ft. (400mm), 06 = 7.97 ft. (600mm); ^^ = B1 = Black, W1 = White.

Net-Contain™ Passive Hot Aisle Containment



C2CACT5F04SD**



C2HACT8F04DFB1**



C2HAC**11626**



C2HACER11626**

Part Number	Description	Std. Pkg. Qty.
-------------	-------------	----------------

Aisle Containment Sliding Doors

C2CACT5F04SD**	Sliding Door CAC for 4 ft. (1200mm) aisle – capable of 42 up to 45 RU – Black or White available.	1
----------------	---	---

^^ B1 = Black, W1 = White.

Sliding Door Frame Adapter for 4' (1200mm) Aisle Containment Sliding Doors

C2HACT8F04DFB1**	Hot Aisle Containment Sliding Door Frame Adapter for 4 ft. (1200mm) aisle, capable of 42 RU up to 48 RU – Black or White available.	1
------------------	---	---

^^ B1 = Black, W1 = White.

Adjustable Vertical Wall for Net-Access™ N-Type and S-Type Cabinets

C2HAC**11626**	Hot Aisle Containment Adjustable Vertical Wall (16" – 26") for 300, 400 or 600mm width cabinets – Black or White available.	1
C2HAC**12638**	Hot Aisle Containment Adjustable Vertical Wall (26" – 38") for 300, 400 or 600mm width cabinets – Black or White available.	1
C2HAC**13866**	Hot Aisle Containment Adjustable Vertical Wall (38" – 66") for 300, 400 or 600mm width cabinets – Black or White available.	1

** 03 = 300mm, 04 = 400mm, 06 = 600mm; ^^ = B1 = Black, W1 = White.

Adjustable EOR Vertical Wall

C2HACER11626**	Adjustable End of Row Vertical Wall (16" – 26") for 900mm/1000mm/1200mm aisle widths – Black or White available.	1
C2HACER12638**	Adjustable End of Row Vertical Wall (26" – 38") for 900mm/1000mm/1200mm aisle widths – Black or White available.	1
C2HACER13866**	Adjustable End of Row Vertical Wall (38" – 66") for 900mm/1000mm/1200mm aisle widths – Black or White available.	1

^^ B1 = Black, W1 = White.

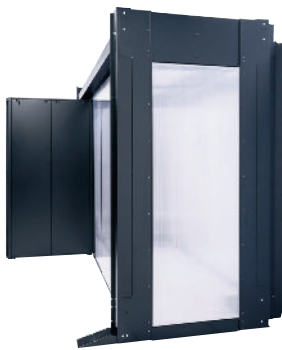
A.
About
Panduit

Net-Contain™ End of Row Cap - Cabinet Supported Containment (Compatible with CAC/HAC)

B.
Copper
Systems

In a containment situation, when one door is needed on the end of the POD and the other end of the POD should be sealed with End of Row Cap.

C.
Fiber
Systems



D.
Faceplates,
Outlet
Frames &
Surface
Mount Boxes

E.
Keystone
Cabling
Systems

F.
Zone
Cabling

G.
Cable
Routing
Systems

H.
Surface
Raceway

J.
Cabinets,
Racks &
Cable
Management
Systems

K.
Power
Management

L.
Grounding
&
Bonding

M.
Identification
Products

N.
Cable
Management
Accessories

O.
Part
Number
Index

Part Number	Part Description	Std. Pkg. Qty.
-------------	------------------	----------------

900mm Aisle Widths

C2CEOR03CP2B1	900mm aisle width End of Row Cap is compatible with 42 RU Cabinets.	1
C2CEOR03CP5B1	900mm aisle width End of Row Cap is compatible with 45 RU Cabinets.	1
C2CEOR03CP8B1	900mm aisle width End of Row Cap is compatible with 48 RU Cabinets.	1
C2CEOR03CP1B1	900mm aisle width End of Row Cap is compatible with 51 RU Cabinets.	1

1200mm Aisle Widths

C2CEOR04CP2B1	1200mm aisle width End of Row Cap is compatible with 42 RU Cabinets.	1
C2CEOR04CP5B1	1200mm aisle width End of Row Cap is compatible with 45 RU Cabinets.	1
C2CEOR04CP8B1	1200mm aisle width End of Row Cap is compatible with 48 RU Cabinets.	1
C2CEOR04CP1B1	1200mm aisle width End of Row Cap is compatible with 51 RU Cabinets.	1

1800mm Aisle Widths

C2CEOR06CP2B1	1800mm aisle width End of Row Cap is compatible with 42 RU Cabinets.	1
C2CEOR06CP5B1	1800mm aisle width End of Row Cap is compatible with 45 RU Cabinets.	1
C2CEOR06CP8B1	1800mm aisle width End of Row Cap is compatible with 48 RU Cabinets.	1
C2CEOR06CP1B1	1800mm Aisle width End of Row Cap is compatible with 51 RU Cabinets	1

^B1 = Black, W1 = White.

Single Row Containment is available along with a BOM Calculator.

Direct Cold Air To Where It Is Needed



Net-Direct™ Inlet Ducts enable optimized containment by effectively directing airflow to improve network reliability

- Inlet duct solutions deliver cooling air directly from the cold aisle into the intake fans of switches
- Inlet ducts are completely passive, requiring no energy to operate and eliminating a point of failure
- Ensures front to back cooling airflow which enables an effective deployment of network switches with a Net-Contain™ Cold Aisle Containment deployment
- Inlet ducts enable reduced fan power energy consumption by allowing lower fan speeds, improving the reliability of the switch

Available for: Cisco® Nexus, Catalyst and MDS Switches and Juniper EX Series Switches

Direct Hot Air To Where It Needs To Exhaust



Net-Direct™ Exhaust Ducts direct hot exhaust air out of a cabinet away from adjacent devices within non-contained environments

- Exhaust duct solutions channel hot exhaust air directly to the hot aisle, away from the cold air inlet of adjacent switches
- Exhaust ducts are completely passive, requiring no energy to operate and eliminating a point of failure
- Ensures switch exhaust airflow is directed to the hot aisle enabling effective deployment of network switches with a standard hot aisle/ cold aisle configuration
- Exhaust ducts enable reduced fan power energy consumption by allowing lower fan speeds, improving the reliability of the switch

Available for: Cisco® Nexus and Catalyst Switches

Patented* In-Cabinet Ducting optimizes cooling system efficiency by establishing front-to-back airflow patterns through the cabinet.

A.
About
Panduit

B.
Copper
Systems

C.
Fiber
Systems

D.
Faceplates,
Outlet
Frames &
Surface
Mount Boxes

E.
Keystone
Cabling
Systems

F.
Zone
Cabling

G.
Cable
Routing
Systems

H.
Surface
Raceway

I.
Cabinets,
Racks &
Cable
Management
Systems

K.
Power
Management

L.
Grounding
&
Bonding

M.
Identification
Products

N.
Cable
Management
Accessories

O.
Part
Number
Index

^ Cisco and Cisco Nexus are registered trademarks Cisco Systems Technology, Inc. and/or its affiliates in the United States and certain other countries.
*Patents #8,035,965, #7,855,885 and #7,595,985 - Network Cabinet with Thermal Air Flow Management System

A. About Panduit

In-Cabinet Ducting

Net-Direct™ In-Cabinet Ducting

B. Copper Systems

- Net-Direct™ Passive Cabinet Inlet Ducting directs cooling air from the cold aisle into the intake fans of switches
- Net-Direct™ Passive Cabinet Exhaust Ducting directs exhaust air from the side exhaust of the switch into the hot aisle
- Net-Direct™ Passive Cabinet Inlet and Exhaust Ducting are compatible with associated Cisco^ products

C. Fiber Systems



CDE1



CDE2



CNLTD21B2



CNLTD52A2



CNLTD142A3



CNLTD72A3



DIBBC2314S21W



DIRLC2214M21W



DIRBB2007S21W



Exhaust Ducts

D. Faceplates, Outlet Frames & Surface Mount Boxes

E. Keystone Cabling Systems

F. Zone Cabling

G. Cable Routing Systems

H. Surface Raceway

J. Cabinets, Racks & Cable Management Systems

K. Power Management

L. Grounding & Bonding

M. Identification Products

N. Cable Management Accessories

O. Part Number Index

Part Number	Part Description	Std. Pkg. Qty.
-------------	------------------	----------------

Air Inlet Ducting

CDE1	Air Inlet Duct, 1 RU that resides below the switch provides cold aisle airflow to Cisco^ Catalyst^ 4948, 4928, and 4924. Optimized for use in server cabinet applications.	1
CDE2	Air Inlet Duct, 1 RU that resides in-line and below switch provides cold aisle airflow to Cisco Nexus^ N2K-C2148T-1GE, N2K-C2248TP-1GE, and N2K-C2232PP-10GE fabric extenders and Cisco^ WS-C4948E-F, WS-C4948E-F-S, and WS-C4948E-F-E. Optimized for use in server cabinet applications.	1
CNLTD21B2	Air Inlet Duct designed for Cisco^ Catalyst^ 4900M switch. Consists of one 2 RU inlet duct and a side duct. Compatible with Net-Access™ N-Type Network Cabinets.	1
CNLTD52A2	Air Inlet Duct designed for Cisco^ Catalyst^ 6504-E switch. Consists of 2 RU top and 2 RU bottom inlet ducts and a side duct. Compatible with Net-Access™ N-Type Network Cabinets.	1
DIRLC2214M21W	Air Inlet Duct designed for Cisco^ Catalyst^ 6509-E switch. Consists of 2 RU top and 2 RU bottom inlet ducts and a side duct. Compatible with Net-Access™ N-Type Network Cabinets.	1
DIRBB2007S21W	Air Inlet Duct designed for Cisco^ Nexus^ 7004 switch. Consists of one 2 RU inlet duct and a side duct. Compatible with Net-Access™ N-Type Network Cabinets.	1
CNLTD142A3	Air Inlet Duct designed for Cisco^ Nexus^ 7009 switch. Consists of 3 RU top and 3 RU bottom inlet ducts and a side duct. Compatible with Net-Access™ N-Type Network Cabinets.	1
CNLTD72A3	Air Inlet Duct designed for Cisco^ MDS 9506 switch. Consists of 3 RU top and 3 RU bottom inlet ducts and a side duct. Compatible with Net-Access™ N-Type Network Cabinets.	1
DIBBC2314S21W	Air Inlet Duct designed for Cisco^ MDS 9513 switch. Consists of 2 RU top and 3 RU bottom inlet ducts and a side duct. Compatible with Net-Access™ N-Type Network Cabinets.	1
CID1RU22-23DB1	Air Inlet 1RU Duct for Cisco^ Nexus^ 9372 switch, compatible with 21.5" – 23.5" switch depth.	1
CID2RU16-20DB1	Air inlet duct for Cisco^ TOR switches, 2RU, depth compatible with 16" – 20" switch depth.	1
DIFBA2002S00S	Air Inlet Duct for Cisco^ Nexus^ 9396 switch.	1
DIFBA3003S00S	Air Inlet Duct for Cisco^ Nexus^ 93128 switch.	1
DIRLC3210S17W	Air Inlet Duct for Cisco^ Catalyst^ 6807XL switch.	1
DIRLC25S23W	Air Inlet Duct for Cisco^ Catalyst^ 6880X switch.	1

Exhaust Ducting

DERLCC6509A	Air Exhaust Duct for Net-Access™ N-Type 1070mm Depth Cabinets. Designed for Cisco^ Catalyst^ 6509 switch.	1
DERLCC9513A	Air Exhaust Duct for Net-Access™ N-Type 1070mm Depth Cabinets. Designed for Cisco^ MDS 9513 switch.	1
DERLCC7009A	Air Exhaust Duct for Net-Access™ N-Type 1070mm Depth Cabinets. Designed for Cisco^ Nexus^ 7009 switch.	1
DERLCC6513A	Air Exhaust Duct for Net-Access™ N-Type 1070mm Depth Cabinets. Designed for Cisco^ Catalyst^ 6513 switch.	1

^Cisco, Catalyst, and Cisco Nexus are registered trademarks of Cisco Systems, Inc. and/or its affiliates in the United States and certain other countries.

Thermal Sealing Accessories



FLBSIM-51



BFS100X2000



TLBP1R-V



TLBP1S-V



TLBP2R-V



RFG*X*Y



RFG*X*SMY

Part Number	Part Description	Color	Std. Pkg. Qty.	Std. Ctn. Qty.
-------------	------------------	-------	----------------	----------------

Blanking Shades

FLBSIM-51	Full-length blanking shade blanks out 1-51 consecutive rack units on standard 19" (482.6mm) wide vertical mounting rails.	Black	1	—
-----------	---	-------	---	---

Cabinet Blanking Foam Strip

BFS100X2000	Adhesive-backed foam strips, 1/16" (1.6mm) closed-cell vinyl foam, perforated to create multiples of 1.00" x 20.00" strips.	Black	1	10
-------------	---	-------	---	----

Tool-Less Blanking Panels

TLBP1R-V	1 RU tool-less blanking panel, round hole 19" (483mm) width for tapped rails.	Black	5	—
TLBP1R-V10	1 RU tool-less blanking panel, round hole 19" (483mm) width for tapped rails.	White	5	—
TLBP1S-L	1 RU tool-less blanking panel, square hole 19" (483mm) width for 3/8" cage nut holes (may be used with or without cage nuts installed), 50 Pack.	Black	5	—
TLBP1S-V	1 RU tool-less blanking panel, square hole 19" (483mm) width for 3/8" cage nut holes (may be used with or without cage nuts installed).	Black	5	—
TLBP1S-V10	1 RU tool-less blanking panel, square hole 19" (483mm) width for 3/8" cage nut holes (may be used with or without cage nuts installed).	White	5	—
TLBP2R-V	2 RU tool-less blanking panel, round hole 19" (483mm) width for tapped rails.	Black	5	—
TLBP2S-V	2 RU tool-less blanking panel, square hole 19" (483mm) width for 3/8" cage nut holes (may be used with or without cage nuts installed).	Black	5	—
TLBP2S-V10	2 RU tool-less blanking panel, square hole 19" (483mm) width for 3/8" cage nut holes (may be used with or without cage nuts installed).	White	5	—

CoolBoot® Raised Floor Air Sealing Grommet - Integral Mount (Designed for New Installation)

Integral gasket protects cables from abrasion against cut raised floor tile.

RFG10X8Y	Overall size of 10" x 8" (254.0mm x 203.2mm) allows for 8.2" x 6.2" (208.3mm x 157.5mm) capacity.	Navy Blue	1	10
RFG12X4Y	Overall size of 12" x 4" (304.8mm x 101.6mm) allows for 10.2" x 2.2" (259.1mm x 55.9mm) capacity.	Navy Blue	1	10
RFG12X8Y	Overall size of 12" x 8" (304.8mm x 203.3mm) allows for 10.2" x 6.2" (259.1mm x 157.5mm) capacity.	Navy Blue	1	10
RFG3DY	Overall size of 4.8" (121.9mm) diameter allows for 2.7" (68.6mm) diameter capacity.	Navy Blue	1	10
RFG5DY	Overall size of 6.8" (172.7mm) diameter allows for 4.7" (119.4mm) diameter capacity.	Navy Blue	1	10
RFG6X8Y	Overall size of 6" x 8" (152.4mm x 203.2mm) allows for 4.2" x 6.2" (106.7mm x 157.5mm) capacity.	Navy Blue	1	10
RFG8X8Y	Overall size of 8" x 8" (203.2mm x 203.2mm) allows for 6.2" x 6.2" (157.5mm x 157.5mm) capacity.	Navy Blue	1	10

CoolBoot® Raised Floor Air Sealing Grommet - Surface Mount (Designed for Retrofit Application)

Secured to top of raised floor tile.

RFG10X8SMY	Overall size of 10" x 8" (254.0mm x 203.2mm) allows for 8.2" x 6.2" (208.3mm x 157.5mm) capacity.	Navy Blue	1	10
RFG12X4SMY	Overall size of 12" x 4" (304.8mm x 101.6mm) allows for 10.2" x 2.2" (259.1mm x 55.9mm) capacity.	Navy Blue	1	10
RFG12X8SMY	Overall size of 12" x 8" (304.8mm x 203.2mm) allows for 10.2" x 6.2" (259.1mm x 157.5mm) capacity.	Navy Blue	1	10
RFG3DSMY	Overall size of 4.8" (121.9mm) diameter allows for 2.7" (68.6mm) diameter capacity.	Navy Blue	1	10
RFG5DSMY	Overall size of 6.8" (172.7mm) diameter allows for 4.7" (119.4mm) diameter capacity.	Navy Blue	1	10
RFG6X8SMY	Overall size of 6" x 8" (152.4mm x 203.2mm) allows for 4.2" x 6.2" (106.7mm x 157.5mm) capacity.	Navy Blue	1	10
RFG8X8SMY	Overall size of 8" x 8" (203.2mm x 203.2mm) allows for 6.2" x 6.2" (157.5mm x 157.5mm) capacity.	Navy Blue	1	10

Continues on next page

Thermal Sealing Accessories (continued)

A. About Panduit

B. Copper Systems

C. Fiber Systems

D. Faceplates, Outlet Frames & Surface Mount Boxes

E. Keystone Cabling Systems

F. Zone Cabling

G. Cable Routing Systems

H. Surface Raceway

J. Cabinets, Racks & Cable Management Systems

K. Power Management

L. Grounding & Bonding

M. Identification Products

N. Cable Management Accessories

O. Part Number Index



CTGN1X5



CTGN3X5



CTGN6X6



CTCN1X5



CTCN3X5



CTNBZL6X6

Part Number	Part Description	Std. Pkg. Qty.	Std. Ctn. Qty.
-------------	------------------	----------------	----------------

CoolBoot® Cabinet Top Air Sealing Fitting

CTGN1X5	Used to seal off 1" x 5" cabinet top openings when cables are routed through the top of a cabinet. Airtight fabric and Ultra-Cinch™ Tie close top of fabric, minimizing hot air bypass around cables to improve cooling of network equipment and reduce energy costs. For use with 600mm wide Net-Access™ Cabinets.	1	10
CTGN3X5	Used to seal off 3" x 5" cabinet top openings when cables are routed through the top of a cabinet. Airtight fabric and Ultra-Cinch™ Tie close top of fabric, minimizing hot air bypass around cables to improve cooling of network equipment and reduce energy costs. For use with 700mm, 800mm, and 1000mm wide Net-Access™ Cabinets.	1	10
CTGN6X6	Used to seal off 6.5" x 6.5" cabinet top openings when cables are routed through the top of a cabinet. Airtight fabric and Ultra-Cinch™ Tie close top of fabric, minimizing hot air bypass around cables to improve cooling of network equipment and reduce energy costs. For use with 600mm, 700mm, 800mm, and 1000mm wide Net-Access™ Cabinets.	1	10

Cabinet Top Cover and Cable Protection Bezel

CTCN1X5	Used to seal off 1.5" x 5" cabinet top openings. Can also be used to add the CTGN1X5 to openings where the snap-on cover has been removed. For use with Net-Access™ Cabinets.	1	10
CTCN3X5	Used to seal off 3.5" x 5" cabinet top openings. Can also be used to add the CTGN3X5 to openings where the snap-on cover has been removed. For use with Net-Access™ Cabinets.	1	10
CTNBZL6X6	Used to provide a protective edge for cables routed through the 6.5" x 6.5" cabinet top openings after knock-outs are removed. Can also be used to add the CTGN6X6 to openings where knock-out has been removed. For use with Net-Access™ Cabinets.	1	10

4 Post Cable Management Rack System and Accessories

- Independent adjustable front and rear mounting rails can be adjusted while the rack is secured to the floor
- Printed rack space identification on all equipment rails allows for quick location of rack spaces (shipped numbers up per TIA606 specifications; can be set to number down by flipping the rails)
- Rack is UL listed for 2500 lbs. load rating
- Multiple mounting holes in top flanges for securing ladder rack
- Weld nut construction eliminates the need for a second wrench increasing speed and ease of assembly
- PatchRunner™ and NetRunner™ Vertical Cable Managers mount directly to the 4 post rack at any of the four corners
- Paint piercing washers included to electrically bond rack for simplified grounding



R4P

Part Number	Part Description	No. of Rack Spaces [^]	Std. Pkg. Qty.
-------------	------------------	---------------------------------	----------------

7' 4 Post Rack Threaded Rail

R4P23*	4 post EIA rack with #12-24 threaded rails. Dimensions: 84.0"H x 23.25"W x 23.0"D (2134mm x 591mm x 584mm).	45	1
R4P*‡	4 post EIA rack with #12-24 threaded rails. Dimensions: 84.0"H x 23.25"W x 30.0"D (2134mm x 591mm x 762mm).	45	1
R4P36*	4 post EIA rack with #12-24 threaded rails. Dimensions: 84.0"H x 23.25"W x 36.0"D (2134mm x 591mm x 914mm).	45	1
R4P42*	4 post EIA rack with #12-24 threaded rails. Dimensions: 84.0"H x 23.25"W x 41.5"D (2134mm x 591mm x 1054mm).	45	1

7' 4 Post Rack Cage Nut Rail

R4P23CN*	4 post EIA rack with cage nut rails. Dimensions: 84.0"H x 23.25"W x 23.0"D (2134mm x 591mm x 584mm).	45	1
R4PCN*‡	4 post EIA rack with cage nut rails. Dimensions: 84.0"H x 23.25"W x 30.0"D (2134mm x 591mm x 762mm).	45	1
R4P36CN*	4 post EIA rack with cage nut rails. Dimensions: 84.0"H x 23.25"W x 36.0"D (2134mm x 591mm x 914mm).	45	1
R4P42CN*	4 post EIA rack with cage nut rails. Dimensions: 84.0"H x 23.25"W x 41.5"D (2134mm x 591mm x 1054mm).	45	1

[^]One rack space = 1.75" (44.45mm).

All product color is black.

‡For 42 RU add suffix 79 to the end of part number and for 42 RU cage nut version add suffix CN79 to the end of the part number.

* For 52 RU racks, add suffix 96 to end of part number.

A.
About Panduit

B.
Copper Systems

C.
Fiber Systems

D.
Faceplates, Outlet Frames & Surface Mount Boxes

E.
Keystone Cabling Systems

F.
Zone Cabling

G.
Cable Routing Systems

H.
Surface Raceway

I.
Cabinets, Racks & Cable Management Systems

K.
Power Management

L.
Grounding & Bonding

M.
Identification Products

N.
Cable Management Accessories

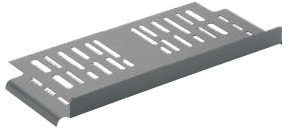
O.
Part Number Index

Continues on next page

A.
About
Panduit

4 Post Cable Management Rack System and Accessories (continued)

B.
Copper
Systems



R4PWF

C.
Fiber
Systems



RSHLF

D.
Faceplates,
Outlet
Frames &
Surface
Mount Boxes

E.
Keystone
Cabling
Systems

F.
Zone
Cabling

G.
Cable
Routing
Systems

H.
Surface
Raceway

J.
Cabinets,
Racks &
Cable
Management
Systems

K.
Power
Management

L.
Grounding
&
Bonding

M.
Identification
Products

N.
Cable
Management
Accessories

O.
Part
Number
Index

Part Number	Part Description	No. of Rack Spaces [^]	Std. Pkg. Qty.
4 Post Rack Accessories			
R4PWF	Top trough with waterfall creates pathway above rack. Dimensions: 1.9"H x 26.1"W x 8.5"D (50mm x 662mm x 216mm).	—	1
RSHLF23	4 post rack mount shelf. Load rating 275 lbs.(124.7 kg). Dimensions: 1.7"H x 19.0"W x 23.0"D (44mm x 483mm x 584mm).	1	1
RSHLF	4 post rack mount shelf. Load rating 275 lbs. (124.7 kg). Dimensions: 1.7"H x 19.0"W x 30.0"D (44mm x 483mm x 762mm).	1	1
RSHLF36	4 post rack mount shelf. Load rating 275 lbs. (124.7 kg). Dimensions: 1.7"H x 19.0"W x 36.0"D (44mm x 483mm x 914mm).	1	1
S1224-C	#12-24 x .5" mounting screws.	—	100
CNWS1224-C	#12-24 cage nut and screws.	—	100
CNWSM6-C	M6 cage nut and screws	—	100

[^]One rack space = 1.75" (44.45mm).

All product color is black.

Additional accessories available. Refer to www.panduit.com for additional information.

2 Post Cable Management Rack System and Accessories

- Printed rack space identification on all equipment rails allows for quick location of rack spaces; numbers up per TIA606 specifications
- 3" Rack is UL listed for 1,000 lbs. load rating
- 6" Rack is UL listed for 1,500 lbs. load rating
- Double-sided #12-24 EIA universal mounting hole spacing
- 24 #12-24 mounting screws included
- Can be used with all Panduit cable management and patch panel products in addition to any industry standard 19" components
- Paint piercing washers included to electrically bond rack for simplified grounding; for the complete grounding solution, StructuredGround™ Kits for Racks see Section L1-L.28 For Grounding and Bonding
- 6" rack, R2P6S is compatible with Patchrunner™ but when mounting NetRunner™ utilize side mount kit WMPVSMK



R2P6S

R2P



RFAKIT



R2PPRVWF

Part Number	Part Description	No. of Rack Spaces [^]	Std. Pkg. Qty.	Std. Ctn. Qty.
6" Channel Racks – Numbered Up				
R2P6S	19" EIA rack, 6" channel, steel. Dimensions: 84.0"H x 20.3"W x 6"D (2134mm x 514mm x 152mm). Note: When mounting NetRunner™ utilize side mount kit WMPVSMK.	45	1	—
R2P6S96	19" EIA rack, 6" channel, steel. Dimensions: 96.0"H x 20.3"W x 6"D (2438mm x 514mm x 152mm). Note: When mounting NetRunner™ utilize side mount kit WMPVSMK.	52	1	—

3" Channel Racks – Numbered Up

R2P48	19" EIA rack, aluminum. Dimensions: 48.0"H x 20.3"W x 3.0"D (1219mm x 514mm x 76mm).	24	1	—
R2P79	19" EIA rack, aluminum. Dimensions: 79.0"H x 20.3"W x 3.0"D (2007mm x 514mm x 76mm).	42	1	—
R2P‡	19" EIA rack, aluminum. Dimensions: 84.0"H x 20.3"W x 3.0"D (2134mm x 514mm x 76mm).	45	1	—
R2PW	23" EIA rack, aluminum. Dimensions: 84.0"H x 24.3"W x 3.0"D (2134mm x 616mm x 76mm).	45	1	—
R2P96	19" EIA rack, aluminum. Dimensions: 96.0"H x 20.3"W x 3.0"D (2134mm x 514mm x 76mm).	52	1	—

2 Post Rack Accessories

RFAKIT	Rack anchor kit for concrete floor (set of four).	—	1	10
S1224-C	#12-24 x .5" mounting screws	—	100	1000
R2PPRVWF	Waterfall Trough for 2 Post Rack and PatchRunner™ Vertical Cable Managers.	—	1	—

[^]One rack space = 1.75" (44.45mm).

All product color is black.

Additional accessories available. Refer to www.panduit.com for additional information.

A. About Panduit

B. Copper Systems

C. Fiber Systems

D. Faceplates, Outlet Frames & Surface Mount Boxes

E. Keystone Cabling Systems

F. Zone Cabling

G. Cable Routing Systems

H. Surface Raceway

J. Cabinets, Racks & Cable Management Systems

K. Power Management

L. Grounding & Bonding

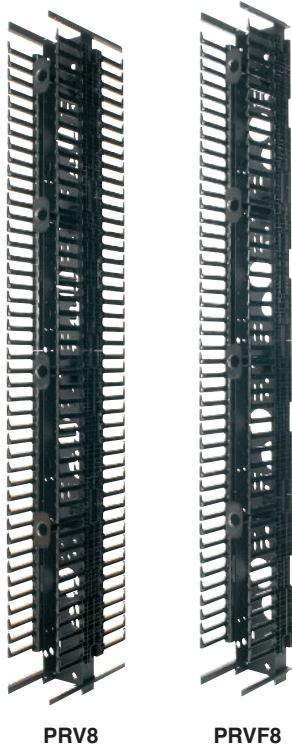
M. Identification Products

N. Cable Management Accessories

O. Part Number Index

PatchRunner™ Vertical Cable Management System

- High density minimizes area required for network layout, freeing up valuable floor space
- Curved cable management fingers support cables as they transition to the vertical pathway eliminating the need for horizontal managers
- Individual fingers can be removed without the use of a tool for routing of large cable bundles
- Fingers align with rack spaces simplifying cable routing
- Slack management spools organize and manage patch cord slack allowing standardization of patch cords
- Optional hinged doors provide easy access to vertical pathway; purchased separately from manager
- Available in 7 foot and 8 foot versions



Part Number	Part Description	No. of Rack Spaces ^A	Std. Pkg. Qty.	Std. Ctn. Qty.
-------------	------------------	---------------------------------	----------------	----------------

Vertical Manager – Manage Cable on Front and Rear of Rack*

PRV6*‡	Vertical cable manager. Dimensions: 84"H x 6"W x 16.4"D (2133.6mm x 152.4mm x 417mm).	45	1	—
PRV8*	Vertical cable manager. Dimensions: 83.9"H x 8.0"W x 16.4"D (2131mm x 203mm x 417mm).	45	1	—
PRV10*	Vertical cable manager. Dimensions: 83.9"H x 10.0"W x 16.4"D (2131mm x 254mm x 417mm).	45	1	—
PRV12*‡	Vertical cable manager. Dimensions: 83.9"H x 12.0"W x 16.4"D (2131mm x 305mm x 417mm).	45	1	—

Vertical Manager – Manage Cable on Front of Rack Only*

PRVF6*‡	Vertical cable manager. Dimensions: 83.9"H x 6.0"W x 9.7"D (2131mm x 152mm x 246mm).	45	1	—
PRVF8*	Vertical cable manager. Dimensions: 83.9"H x 8.0"W x 9.7"D (2131mm x 203mm x 246mm).	45	1	—
PRVF10*	Vertical cable manager. Dimensions: 83.9"H x 10.0"W x 9.7"D (2131mm x 254mm x 246mm).	45	1	—
PRVF12*‡	Vertical cable manager. Dimensions: 83.9"H x 12.0"W x 9.7"D (2131mm x 305mm x 246mm).	45	1	—

PatchRunner™ Doors

PRD6*‡	Dual hinged metal door. Dimensions: 82.8"H x 6.1"W x 1.6"D (2104mm x 206mm x 40mm).	45	1	—
PRD8*	Dual hinged metal door. Dimensions: 82.8"H x 8.1"W x 1.6"D (2104mm x 206mm x 40mm).	45	1	—
PRD10*	Dual hinged metal door. Dimensions: 82.8"H x 10.1"W x 1.6"D (2104mm x 257mm x 40mm).	45	1	—
PRD12*‡	Dual hinged metal door. Dimensions: 82.8"H x 12.1"W x 1.6"D (2104mm x 308mm x 40mm).	45	1	—

^AOne rack space = 1.75" (44.45mm).

All product color is black.

*For part numbers that fit 8' rack, add "96" to end of part number.

Overall height for managers is 95.5" (2426mm). Overall door height is 94.4" (2399mm).

‡For 42 RU add suffix 79 to the end of part number.



PRSP7



PREPB1

Part Number	Part Description	No. of Rack Spaces [^]	Std. Pkg. Qty.	Std. Ctn. Qty.
Accessories				
PRSP7	Molded plastic slack spool, front only. Dimensions: 7.0"D x 1.3" diameter (178mm x 32mm).	—	1	10
PRSP5	Molded plastic slack spool, front or rear. Dimensions: 5.25"D x 1.3" diameter (133mm x 32mm).	—	1	10
PREPB1*	End panel Dimensions: 82.5"H x 14.5"W x .7"D (2095mm x 367mm x 18mm).	45	1	—
WR5E-X	Snap-on finger cable retainers.	—	10	100

[^]One rack space = 1.75" (44.45mm).

All product color is black.

*For 52 RU end panel, use part number PREP96B1.

A.
About Panduit

B.
Copper Systems

C.
Fiber Systems

D.
Faceplates, Outlet Frames & Surface Mount Boxes

E.
Keystone Cabling Systems

F.
Zone Cabling

G.
Cable Routing Systems

H.
Surface Raceway



K.
Power Management

L.
Grounding & Bonding

M.
Identification Products

N.
Cable Management Accessories

O.
Part Number Index

A. About Panduit

B. Copper Systems

C. Fiber Systems

D. Faceplates, Outlet Frames & Surface Mount Boxes

E. Keystone Cabling Systems

F. Zone Cabling

G. Cable Routing Systems

H. Surface Raceway

J. Cabinets, Racks & Cable Management Systems

K. Power Management

L. Grounding & Bonding

M. Identification Products

N. Cable Management Accessories

O. Part Number Index

NetRunner™ Vertical Cable Management

- Integral cable retainers on the end of each finger provides easy access to route cables between fingers
- Bend radius fingers align with rack spaces to support cables as they transition to the vertical pathway
- Dual hinged covers can be opened 110° to the left or right to provide complete access to the cables inside the vertical pathway
- Vertical managers include hinged covers, mounting brackets and #12-24 screws



WMPV22E



WMPVF22E

Part Number	Part Description	No. of Rack Spaces [^]	Std. Pkg. Qty.	Std. Ctn. Qty.
-------------	------------------	---------------------------------	----------------	----------------

Vertical Cable Managers – Front and Rear

WMPV22E	Front and rear vertical manager. Dimensions: 41.5"H x 4.9"W x 12.0"D (1054mm x 125mm x 306mm).	22	1	—
WMPVHC45E	Front and rear vertical manager. Dimensions: 83.0"H x 6.7"W x 14.1"D (2108mm x 170mm x 357mm).	45	1	—
WMPV45E	Front and rear vertical manager. Dimensions: 83.0"H x 4.9"W x 12.0"D (2108mm x 125mm x 306mm).	45	1	—

Vertical Cable Managers – Front Only

WMPVF22E	Front only vertical manager. Dimensions: 41.5"H x 4.9"W x 6.5"D (1054mm x 125mm x 165mm).	22	1	—
WMPVHCF45E	Front only vertical manager. Dimensions: 83.0"H x 6.7"W x 7.6"D (2108mm x 170mm x 192mm).	45	1	—
WMPVF45E	Front only vertical manager. Dimensions: 83.0"H x 4.9"W x 6.5"D (2108mm x 125mm x 165mm).	45	1	—

Accessories

WMPVCBE	NetRunner™ Center Mount Bracket Kit allows mounting to adjacent racks. Four brackets per kit.	—	1	10
WMPVCMB	NetRunner™ mounting brackets for racks with a wider mounting face dimensions up to 1 5/8" (4.1mm) wide from the edge of the rack to the center of the mounting holes. Kit includes 4 brackets and mounting screws for side mounting.	—	1	10
NREPB1	End panel for use with WMPVHCF45E/WMPVHC45E. Includes two panel sections to cover 45 RU on one side.	45	1	—
WMPV45EPB1	End panel for use with WMPVF45E/WMPV45E. Includes two panel sections to cover 45 RU on one side.	45	1	—
WMPV45ERTW	Rack top trough with waterfall creates pathway above rack, for use with R2P found on page J.35 and WMPV45E/WMPVHC45E.	—	1	—
WR5E-X	Snap-on finger cable retainers.	—	10	100

[^]One rack space = 1.75" (44.45mm).
All product color is black.

PatchLink™ Horizontal Cable Managers

- Lightweight plastic construction provides durability and easy installation
- Patented dual hinged cover allows cable access without removing cover
- Rounded edges on fingers protect cables from snags and damage to cable
- Flexible fingers allows easy installation and removal of cables
- Pass-through holes allow front to rear cabling
- Covers and #12-24 mounting screws included
- Recommended for use with NetRunner™ WMPVF45E and WMPV45E Vertical Managers found on page J.38



WMPSE



WMP1E



WMPH2E



WMPF1E



WMPFSE



WMPHF2E

Part Number	Part Description	No. of Rack Spaces [^]	Std. Pkg. Qty.
19" Manager, Front and Rear, 1 RU			
WMPSE	Dimensions: 1.7"H x 19.0"W x 8.9"D (44mm x 483mm x 226mm).	1	1
19" Manager, Front and Rear, 2 RU			
WMP1E	Dimensions: 3.5"H x 19.0"W x 8.9"D (89mm x 483mm x 226mm).	2	1
WMPH2E	Dimensions: 3.5"H x 20.2"W x 8.9"D (89mm x 513mm x 226mm). Includes extended front covers and two bend radius clips.	2	1
19" Manager, Front Only, 1 RU			
WMPFSE	Dimensions: 1.7"H x 19.0"W x 3.7"D (44mm x 483mm x 94mm).	1	1
19" Manager, Front Only, 2 RU			
WMPF1E	Dimensions: 3.5"H x 19.0"W x 3.7"D (89mm x 483mm x 94mm).	2	1
WMPHF2E	Dimensions: 3.5"H x 20.2"W x 3.7"D (89mm x 573mm x 94mm). Includes extended front covers and two bend radius clips.	2	1

[^]One rack space = 1.75" (44.45mm).
All product color is black.
Refer to www.panduit.com for additional information.

A. About Panduit

B. Copper Systems

C. Fiber Systems

D. Faceplates, Outlet Frames & Surface Mount Boxes

E. Keystone Cabling Systems

F. Zone Cabling

G. Cable Routing Systems

H. Surface Raceway

I. Cabinets, Racks & Cable Management Systems

K. Power Management

L. Grounding & Bonding

M. Identification Products

N. Cable Management Accessories

O. Part Number Index

A. About Panduit

B. Copper Systems

C. Fiber Systems

D. Faceplates, Outlet Frames & Surface Mount Boxes

E. Keystone Cabling Systems

F. Zone Cabling

G. Cable Routing Systems

H. Surface Raceway

J. Cabinets, Racks & Cable Management Systems

K. Power Management

L. Grounding & Bonding

M. Identification Products

N. Cable Management Accessories

O. Part Number Index

NetManager™ High Capacity Horizontal Cable Managers

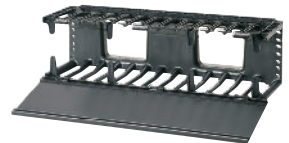
- Innovative inset fingers slope inward toward back of managers offering unobstructed access to network cabling for easier moves, adds, and changes
- Rear cable management finger spacing utilizes open D-rings for greater accessibility
- Can be used to create large capacity horizontal pathways for routing cable
- Patented front and rear dual hinged cover allows cable access without removing cover
- Pass-through holes allow for front to rear cabling
- Built in cable retainers hold cable in place for easy moves, adds, and changes
- Covers and #12-24 mounting screws included
- Recommended for use with NetRunner™ WMPVHC45E and WMPVHCF45E Vertical Managers or PatchRunner™ Vertical Managers found on page J.38



NM2



NMF2



NMF3



NMF4

Part Number	Part Description	No. of Rack Spaces [^]	Std. Pkg. Qty.
19" High Capacity Manager, Front and Rear			
NM1	Dimensions: 1.7"H x 19.0"W x 13.1"D (44mm x 482mm x 332mm).	1	1
NM2	Dimensions: 3.5"H x 19.0"W x 13.1"D (88mm x 482mm x 332mm).	2	1
NM3	Dimensions: 5.2"H x 19.0"W x 13.1"D (133mm x 482mm x 332mm).	3	1
NM4	Dimensions: 7.0"H x 19.0"W x 13.1"D (177mm x 482mm x 332mm).	4	1

19" High Capacity Manager, Front Only			
NMF1	Dimensions: 1.7"H x 19.0"W x 6.2"D (44mm x 482mm x 157mm).	1	1
NMF2	Dimensions: 3.5"H x 19.0"W x 6.2"D (88mm x 482mm x 157mm).	2	1
NMF3	Dimensions: 5.2"H x 19.0"W x 6.2"D (133mm x 482mm x 157mm).	3	1
NMF4	Dimensions: 7.0"H x 19.0"W x 6.2"D (177mm x 482mm x 157mm).	4	1

[^]One rack space = 1.75" (44.45mm).
All product color is black.
Front to rear pass through blanking panels are available. Refer to www.panduit.com for additional information.

Open-Access™ Horizontal Cable Managers

- D-ring managers provide an open and efficient way to manage cable
- Patented D-ring design provides flexibility for easy moves, adds, and changes
- Pass-through holes allow front to rear cabling
- Mount to 19" EIA racks and cabinets
- Hardware included
- Ideal when positioning managers above and below a 1RU patch panel or switch for better port access



CMPH1



CMPH2



CMPHF1



CMPHHF1



CMPHF2



CMPHH2

Part Number	Part Description	No. of Rack Spaces ^A	Std. Pkg. Qty.
19" Manager, Front and Rear, 1 RU			
CMPH1	D-rings installed on panel. Dimensions: 1.7"H x 19.0"W x 8.6"D (44mm x 483mm x 218mm).	1	1
19" Manager, Front and Rear, 2 RU			
CMPH2	D-rings installed on panel. Dimensions: 3.5"H x 19.0"W x 8.6"D (88mm x 483mm x 218mm).	2	1
19" Manager, Front Only, 1 RU			
CMPHF1	D-rings installed on panel. Dimensions: 1.7"H x 19.0"W x 3.4"D (44mm x 483mm x 87mm).	1	1
CMPHHF1	D-rings installed on panel. Dimensions: 1.7"H x 19.0"W x 5.7"D (44mm x 483mm x 144mm).	1	1
19" Manager, Front Only, 2 RU			
CMPHF2	D-rings installed on panel. Dimensions: 3.5"H x 19.0"W x 3.4"D (88mm x 483mm x 87mm).	2	1
CMPHH2	D-rings installed on panel. Dimensions: 3.5"H x 19.0"W x 5.7"D (88mm x 483mm x 144mm).	2	1

^AOne rack space = 1.75" (44.45mm).

All product color is black.

Optional covers are available. Refer to www.panduit.com for additional information.

Cable Routing Troughs

- Provide pathways to route cables in a rack line-up
- Provides a gradual, controlled bend radius or both copper and fiber cable. Strong lightweight aluminum construction. Mounts on 19" rack; may also be wall-mounted



CMLT19



CMUT19



CMT4

Part Number	Part Description	Std. Pkg. Qty.
CMLT19	4 RU lower trough with 1.3" bend radius mounts to the bottom of a standard 19" EIA rack. Dimensions: 8.0"H x 19.0"W x 4.5"D (203mm x 483mm x 114mm).	1
CMUT19	2 RU upper trough with 1.3" bend radius mounts to the top of a standard 19" EIA rack. Dimensions: 3.5"H x 19.0"W x 4.5"D (89mm x 483mm x 114mm).	1
CMT4	4 RU cable routing trough. Dimensions: 6.9"H x 19.0"W x 4.5"D (176mm x 483mm x 114mm).	1

One rack space = 1.75" (44.45mm).

All product color is black.

A. About Panduit

Rack Mount Shelves

- Load ratings up to 250 lbs. refer to part descriptions for specific load ratings
- Mounting hardware included. Vented for active equipment for better heat distribution

B. Copper Systems

C. Fiber Systems



SRM19FM2

Part Number	Part Description	No. of Rack Spaces [^]	Std. Pkg. Qty.
SRM19FM1	19" front mount shelf, steel. Dimensions: 1.7"H x 19.0"W x 15.2"D (44mm x 483mm x 385mm). Load rating 30 lbs.	1	1
SRM19FM2	19" front mount shelf, steel. Dimensions: 3.5"H x 19.0"W x 15.2"D (88mm x 483mm x 385mm). Load rating 50 lbs.	2	1
SRM19CMV3	19" cantilevered shelf, vented aluminum. Includes two-piece shelf that mounts to front and back of EIA racks. Dimensions: 5.2"H x 19.2"W x 12.5"D (133mm x 489mm x 316mm). Load rating 200 lbs.	3	1
SRM19CM3	19" cantilevered shelf, aluminum. Includes two-piece shelf that mounts to front and back of EIA racks. Dimensions: 5.2"H x 19.2"W x 12.5"D (133mm x 489mm x 316mm). Load rating 200 lbs.	3	1
SRM19X18A1	19" adjustable mount shelf, steel, mounts to front and back of EIA racks. Dimensions: 1.8"H x 19.0"W x 18.0"D (44mm x 483mm x 457mm). Load rating 250 lbs.	1	1
SRM19X25A1	19" adjustable mount shelf, steel, mounts to front and back of EIA racks. Dimensions: 1.8"H x 19.0"W x 25.0"D (44mm x 483mm x 635mm). Load rating 250 lbs.	1	1



SRM19CMV3



SRM19X18A1

D. Faceplates, Outlet Frames & Surface Mount Boxes

E. Keystone Cabling Systems

F. Zone Cabling

G. Cable Routing Systems

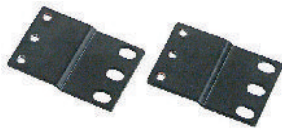
H. Surface Raceway

J. Cabinets, Racks & Cable Management Systems

[^]One rack space = 1.75" (44.45mm).
All product color is black.
Additional shelves available. Refer to www.panduit.com for additional information.

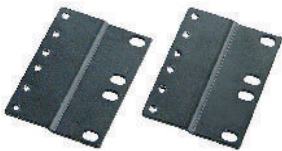
Panel Extender Brackets

- Allow for mounting 19" product on 23" standard EIA racks or cabinets
- Offset bracket design maintains flush mounting of panels
- Mounting hardware included



PEB1

Part Number	Part Description	No. of Rack Spaces [^]	Std. Pkg. Qty.	Std. Ctn. Qty.
PEB1	Converts 19" horizontal panels to 23" panels.	1	1	10
PEB2	Converts 19" horizontal panels to 23" panels.	2	1	10



PEB2

[^]One rack space = 1.75" (44.45mm).
All product color is black.

L. Grounding & Bonding

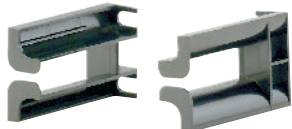
M. Identification Products

N. Cable Management Accessories

O. Part Number Index

Rack Mount Cable Management Accessories

- Bend radius control fingers support cables as they transition to the vertical pathway
- Finger spacing aligns with rack units
- Attach to patch panels or equipment mounting screws
- Lightweight plastic construction provides durability and easy installation



CMBRC1



CMBRC5E

Part Number	Part Description	No. of Rack Spaces ^A	Std. Ctn. Qty.
CMBRC1	Kit of two bend radius control fingers; for use with patch panels. Maintains 1/2" bend radius control. Dimensions: 1.7"H x .8"W x 3.0"D (44mm x 19mm x 77mm).	1	10
CMBRC1E	Kit of two bend radius control fingers, for use with patch panels. Maintains 1/2" bend radius control. Dimensions: 1.7"H x 1.0"W x 5.1"D (44mm x 25mm x 129mm).	1	10
CMBRC5	One-piece unit with five bend radius control fingers; for use with active equipment. Maintains 1/4" bend radius control. Dimensions: 8.7"H x 1.0"W x 3.3"D (222mm x 26mm x 84mm).	5	10
CMBRC5E	One-piece unit with five bend radius control fingers; for use with active equipment. Maintains 1/4" bend radius control. Dimensions: 8.7"H x 1.0"W x 5.1"D (222mm x 26mm x 129mm).	5	10

^AOne rack space = 1.75" (44.45mm).
All product color is black.

Hinged Wall Brackets

- Mount to wall or standard EIA 19" rack
- Cable tie slots for securing cables
- Standard 19" EIA hole spacing
- L-Bracket can be removed from the main bracket to access the backside of the equipment for MAC's
- Panel rotates from one side for easy access to cabling; hinged bracket can be mounted on left or right side
- Include write-on labeling area
- Accept 19" patch panels, horizontal managers, and equipment



WBH1



WBH2



WBH3



WBH4



WBH4E

Part Number	Part Description	No. of Rack Spaces ^A	Std. Pkg. Qty.
6" Deep Wall Brackets			
WBH1	Dimensions: 1.8"H x 20.2"W x 6.3"D (44mm x 513mm x 159mm). Load rating 10 lbs.	1	1
WBH2	Dimensions: 3.5"H x 20.2"W x 6.3"D (89mm x 513mm x 159mm). Load rating 20 lbs.	2	1
WBH3	Dimensions: 5.3"H x 20.2"W x 6.3"D (133mm x 513mm x 159mm). Load rating 30 lbs.	3	1
WBH4	Dimensions: 7.0"H x 20.2"W x 6.3"D (178mm x 513mm x 159mm). Load rating 40 lbs.	4	1

15" Deep Wall Brackets

WBH2E	Dimensions: 3.5"H x 20.4"W x 15.8"D (89mm x 519mm x 402mm). Load rating 20 lbs.	2	1
WBH4E	Dimensions: 7.0"H x 20.4"W x 15.8"D (177mm x 519mm x 402mm). Load rating 40 lbs.	4	1
WBH6E	Dimensions: 10.5"H x 20.4"W x 15.8"D (267mm x 519mm x 402mm). Load rating 60 lbs.	6	1

^AOne rack space = 1.75" (44.45mm).
All product color is black.

A. About Panduit

Full-Length Blanking Shade

- Adjustable blanking solution that can blank out as few as 1 or as many as 51 rack units
- Requires no tools or hardware to install
- Easy and efficient installation and deployment
- Can easily be raised or lowered to allow service to components within the cabinet



Part Number	Part Description	No. of Rack Spaces [^]	Std. Pkg. Qty.
FLBSIM-51	Full-length blanking shade blanks out 1-51 consecutive rack units on standard 19" (482.6mm) wide vertical mounting rails; black.	4-45	1

[^]One rack space = 1.75" (44.45mm).

B. Copper Systems

C. Fiber Systems

D. Faceplates, Outlet Frames & Surface Mount Boxes

E. Keystone Cabling Systems

Tool-Less Blanking Panels

- Minimize bypass airflow in standard EIA 19" racks and cabinets while providing an aesthetic appearance
- Require no tools or hardware to install



TLBP1



TLBP2

Part Number	Part Description	No. of Rack Spaces [^]	Std. Pkg. Qty.
TLBP1S-V	1 RU tool-less blanking panel, square hole 19" (483mm) width for 3/8" cage nut holes (may be used with or without cage nuts installed).	1	5
TLBP2S-V	2 RU tool-less blanking panel, square hole 19" (483mm) width for 3/8" cage nut holes (may be used with or without cage nuts installed).	2	5
TLBP1R-V	1 RU tool-less blanking panel, round hole 19" (483mm) width for tapped rails.	1	5
TLBP2R-V	2 RU tool-less blanking panel, round hole 19" (483mm) width for tapped rails.	2	5

[^]One rack space = 1.75" (44.45mm).
White also available.

F. Zone Cabling

G. Cable Routing Systems

H. Surface Raceway

J. Cabinets, Racks & Cable Management Systems

Rack Filler Panels

- Reserve rack space for future use
- Direct airflow in cabinet applications
- Mount to standard EIA 19" racks or cabinets
- #12-24 and M6 mounting screws included



DPFP1



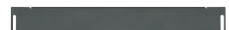
DPFP2



DPFP4



DPFP8



DPFPA1

Part Number	Part Description	No. of Rack Spaces [^]	Std. Pkg. Qty.	Std. Ctn. Qty.
DPFP1	Dimensions: 1.8"H x 19.0"W (44mm x 483mm).	1	1	10
DPFP2	Dimensions: 3.5"H x 19.0"W (89mm x 483mm).	2	1	10
DPFP4	Dimensions: 7.0"H x 19.0"W (178mm x 483mm).	4	1	10
DPFP8	Dimensions: 14.0"H x 19.0"W (355mm x 483mm).	8	1	10
DPFPA1	1RU adjustable blanking panel.	—	1	10

[^]One rack space = 1.75" (44.45mm).
All product color is black.

K. Power Management

L. Grounding & Bonding

M. Identification Products

N. Cable Management Accessories

O. Part Number Index

UL LISTED SP Angled Panel Accessories

- Aesthetic design provides a clean and consistent look when used with Panduit angled patch panels
- Support warm aisle/cold aisle methodology by sealing in cool air and not allowing it to escape, promoting proper airflow and cooling



CPAF1BLY



CPATCBL

- Protect exposed connectors from intrusion of debris or accidental disconnection

Part Number	Part Description	No. of Rack Spaces [^]	Std. Pkg. Qty.	Std. Ctn. Qty.
CPAF1BLY	Covers one open rack space in standard EIA 19" rack.	1	1	10
CPATCBL	Transitional cover for angled patch panels that occupies zero rack space.	–	1	10

[^]One rack space = 1.75" (44.45mm).
All product color is black.

IN-Cabinet Vertical Cable Managers

- For managing cable within cabinets 27" or wider
- Attach to equipment mounting rails
- Two mounting bracket options to facilitate mounting to various cabinet configurations
- Snap-on covers included



Side Mount Bracket



Front Mount Bracket



CWMPV3340

Part Number	Part Description	No. of Rack Spaces [^]	Std. Pkg. Qty.
-------------	------------------	---------------------------------	----------------

Side Mount – Front Only

CWMPV3440	Duct with side mount bracket, cage nut, and screws. Dimensions: 71.9"H x 3.5"W x 4.3"D (1825mm x 88mm x 109mm).	40	1
CWMPV2440	Duct with side mount bracket, cage nut, and screws. Dimensions: 71.9"H x 2.5"W x 4.3"D (1825mm x 63mm x 109mm).	40	1

Front Mount – Front Only

CWMPV2340	Duct with front mount bracket, cage nut, and screws. Dimensions: 70.0"H x 3.7"W x 3.3"D (1778mm x 94mm x 83mm).	40	1
CWMPV3340	Duct with front mount bracket, cage nut, and screws. Dimensions: 70.0"H x 4.7"W x 3.3"D (1778mm x 119mm x 83mm).	40	1

[^]One rack space = 1.75" (44.45mm).
All product color is black.

Additional sizes available. Refer to www.panduit.com for additional information.