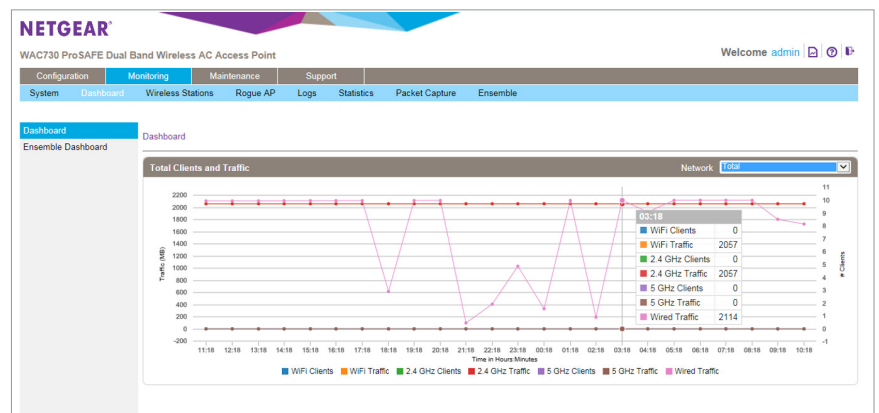
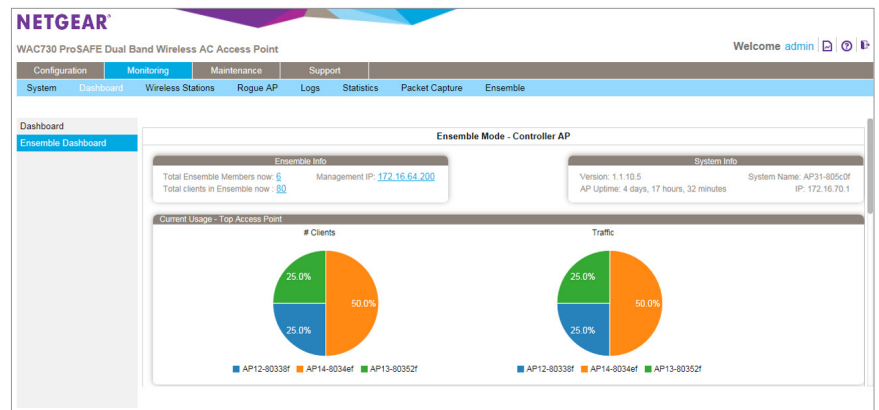




Quad Mode 802.11ac Wireless Access Point with Increased Range

The NETGEAR® ProSAFE® WAC720 is a high performance 2 x 2 business class dual band 802.11ac wireless Access Point (AP) that can support an aggregate throughput of up to 1.2 Gbps (300 Mbps for 2.4 GHz and 867 Mbps 802.11ac for 5 GHz). Equipped with industry unique capability of Quad Mode management, allowing user to flexibly switch access point from one management mode to another without complexity. Quad Mode management enables WAC720 to operate in standalone, ensemble, controller, and Business central modes, based on the required deployment scenario.

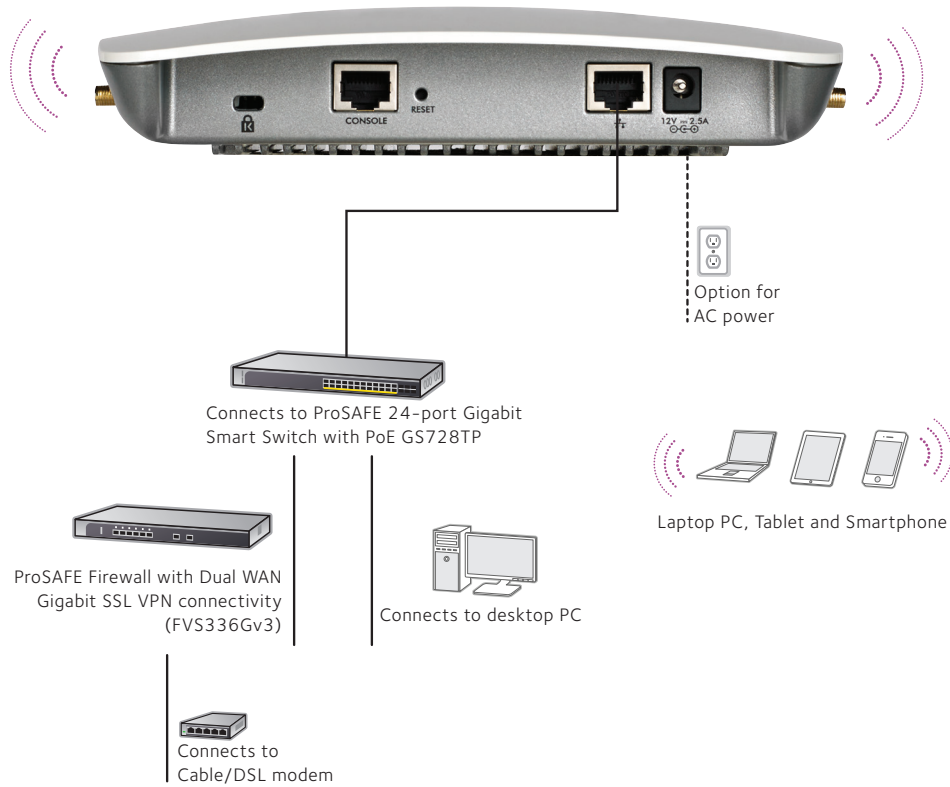
- Double the speed and increase in coverage over entry level 802.11n access points
- Reliable wireless coverage with 2 streams of data based on 2 x 2 (Transmit and Receive) optimized internal antennas
- Compact and elegant design stylishly blends into the environment
- Concurrent operation in 2.4GHz (300Mbps) and 5GHz (867Mbps) for maximum wireless throughput
- Backward compatibility with 802.11a, 802.11b, 802.11g, and 802.11n network devices
- Integrated Power over Ethernet (IEEE 802.3af PoE) lowers deployment costs
- Ensemble mode management of up to 10 like Access Points without the need for a controller
- Controller management by WC7600 and WC9500 allowing centralized management up to 600 Access Points in a cluster of controllers.
- Business Central management allowing Access Point to be centrally managed with secured and flexible cloud platform.
- Deploy wireless coverage over large areas with point-to-point and point-to-multipoint bridging via Wireless Distribution System (WDS)
- Business-class security features include WPA, WPA2, rogue AP detection and 802.1x with RADIUS support
- Easy mounting mechanism for quick wall or ceiling installation
- Internal antennas factory-optimized for maximum RF performance
- Antenna take-offs enable optional accessory antenna attachment for 2.4GHz and/or 5GHz operations



Intuitive dashboards of Ensemble Mode



Target Applications



Product Comparison

| Features | WAC505 | WAC510 | WAC720 | WAC730 | WAC740 |
|---|----------------------------|----------------------------|---|---|---|
| Frequency | 2.4GHz and 5GHz | 2.4GHz and 5GHz | 2.4GHz and 5GHz | 2.4GHz and 5GHz | 2.4GHz and 5GHz |
| Wireless Mode (Transmit x Receive) | 802.11ac (2x2) | 802.11ac (2x2) | 802.11ac (2x2) | 802.11ac (3x3) | 802.11ac (4x4) |
| 802.11ac Wave | Wave 2 | Wave 2 | Wave 1 | Wave 1 | Wave 2 |
| Multi-User MIMO | Yes | Yes | No | No | Yes |
| Maximum Theoretical Throughput | 1.2Gbps AC1200 | 1.3Gbps AC1300 | 1.2Gbps AC1200 | 1.7Gbps AC1700 | 2.3Gbps AC2300 |
| Maximum Throughput (2.4/5GHz) | 300/867Mbps (2.4/5GHz) | 400/867Mbps (2.4/5GHz) | 300/867Mbps (2.4/5GHz) | 450/1300Mbps (2.4/5GHz) | 600/1700Mbps (2.4/5GHz) |
| Power over Ethernet (PoE) IEEE 802.3af | Yes | Yes | Yes | Yes | Yes, PoE+ |
| PoE Power Consumption | 8.9 Watts | 9.3 Watts | 11.0 Watts | 12.9 Watts | 17.9 Watts |
| Centralized Management | Insight App, Standalone | Insight App, Standalone | Quad Mode Management (Standalone, Ensemble™, Controller, and Business Central) | Quad Mode Management (Standalone, Ensemble™, Controller, and Business Central) | Controller |
| SNMP | v1, v2c | v1, v2c | v1, v2c | v1, v2c | v1, v2c |
| Secure SSH | Yes | Yes | Yes | Yes | Yes |
| Secure Socket Layer (SSL) | Yes | Yes | Yes | Yes | Yes |
| Router Mode | No | Yes | No | No | No |
| Wireless Distribution System (WDS) | | | | | |
| Repeater | Yes | Yes | Yes | Yes | No |
| Bridge point-to-point/multi-point | Yes | Yes | Yes | Yes | No |
| Simultaneous bridge & wireless client association | Yes | Yes | Yes | Yes | No |
| Antenna | Internal 3/4dBi (2.4/5GHz) | Internal 3/5dBi (2.4/5GHz) | Internal 5/6dBi (2.4/5GHz) Three (3) External reverse SMA connectors for 2.4/5GHz antennas | Internal 5/6dBi (2.4/5GHz) Two (2) External reverse SMA connectors for 2.4/5GHz antennas | Internal 5/6dBi (2.4/5GHz) four (4) External reverse SMA connectors for 2.4/5GHz antennas |
| Security | | | | | |
| WiFi Protected Access (WPA/WPA2), 802.11i | Yes | Yes | Yes | Yes | Yes |
| MAC address filtering with access control | Yes | Yes | Yes | Yes | Yes |
| 802.1x RADIUS support with EAP TLS, TTLS, PEAP | Yes | Yes | Yes | Yes | Yes |
| Rogue AP detection | Yes | Yes | Yes | Yes | Yes |
| Block SSID Broadcast | Yes | Yes | Yes | Yes | Yes |
| VLAN Support | Yes | Yes | Yes | Yes | Yes |
| Guest Network/Captive Portal | Yes | Yes | Yes | Yes | Yes |
| Accepts external antennas | No | No | Yes | Yes | Yes |
| Easy ceiling mounting/wall mouting | Yes | Yes | Yes | Yes | Yes |
| Bandwidth management | Yes | Yes | Yes | Yes | Yes |
| Bonjour Gateway | No | No | Yes | Yes | Yes |
| Link Layer Discovery Protocol | Yes | Yes | Yes | Yes | Yes |
| Bandsteering | Yes | Yes | Yes | Yes | Yes |

Technical Specifications

Wireless Characteristics

Standards

- IEEE 802.11ac Wave 1 standard
- WMM Wireless Multimedia Prioritization
- WDS Wireless Distribution System
- Power over Ethernet (PoE) IEEE 802.3af/802.3at

Physical Specifications

- Physical Dimensions (W x D x H): 197 x 197 x 40mm (7.76 x 7.76 x 1.57in)
- Weight: 726g (1.6lb)

Physical Interfaces

- One (1) 10/100/1000BASE-T Gigabit Ethernet (RJ-45) ports with Auto Uplink™ (Auto MDI-X) with IEEE 802.3af or 802.3at Power over Ethernet (PoE) support
- Power adapter (not included): 12V DC, 2.5A; plug is localized to country of sale
- One (1) console port with RJ45 Interface
- Two (2) reverse SMA antenna connectors for dual band 2.4 and 5GHz external antennas (not included)
- Five (5) LED: Power, Link/ACT, LAN, 2.4GHz, 5GHz

Security

- WiFi Protected Access (WPA, WPA2)
- IEEE 802.1x RADIUS authentication with EAP TLS, TTLS, PEAP
- Wireless access control to identify authorized wireless network devices
- MAC address authentication
- VPN pass-through support
- Secure SSH telnet
- Security Sockets Layer (SSL) remote management login

Management

- Ensemble Management for support of up to 10 like Access Points in a single cluster
- Controller management by WC7600 and WC9500 wireless controllers
- Cloud management through NETGEAR Business Central
- Remote configuration and management through Web browser, SNMP or telnet with command line interface (CLI)
- SNMP management supports SNMP MIB II, 802.11 MIB and proprietary configuration MIB

Advanced Wireless Features

Wireless Distribution System (WDS)

- Bridge mode: Point-to-point wireless WDS mode
- Bridge mode: Point-to-multipoint wireless WDS mode
- Repeater mode
- Adjustable Transmit Power Control (TPC)

Package Contents

- ProSAFE® Business Dual Band Wireless-AC Access Point (WAC720)
- Ethernet cable
- Ceiling and wall mount kit
- Installation guide

Accessories

Power Adapters with plug localized to country of sales

- PAV12V-100AUS (for Australia)
- PAV12V-100EUS (for Europe, outside of UK)
- PAV12V-100NAS (for North America)
- PAV12V-100PRS (for China)
- PAV12V-100UKS (for UK)

NETGEAR Warranty*

- NETGEAR ProSAFE® Lifetime Hardware Warranty.
- ProSUPPORT™ Lifetime Chat Technical Support (Remote diagnostics performed by our technical experts for prompt resolution of technical issues).
- ProSUPPORT 90 days(24/7) Live Phone Technical Support during business hours.
- Lifetime Next Business Day (NBD) Hardware replacement (See <http://onsite.netgear.com> for coverage, availability and terms and conditions).

Ordering Information

- **WAC720-10000S:** Everywhere except U.S and Canada
- **WAC720-100NAS:** U.S and Canada

* This product comes with a lifetime warranty that is valid only if purchased from a NETGEAR authorized reseller, and modifications to product may void the warranty—not software or external power supplies; see <http://www.netgear.com/about/warranty/> for details. Lifetime technical support includes basic phone support for 90 days from purchase date and lifetime online chat support when purchased from a NETGEAR authorized reseller. This product was tested for quality and its components may be recycled. For indoor use only.