

MOTOR WHEEL[®]

COMMERCIAL VEHICLE SYSTEMS



Quality Wheel-End Products



**CATALOG
#2-08**

Table of Contents

General Notes	2
---------------------	---

BRAKE DRUMS

CentriFuse Brake Drums	Warranty	3
	Genuine CentriFuse Advantages	4
	CentriFuse Lite Advantages	5
	Brake Drum Mounting Procedures	6
	Brake Drum Mounting Problems	7
	Recognizing and Correcting Braking Problems	8
	Drum Problems and Conditions	9-11
	Drum Back / Band to Drum Number	12
	Specifications List by Part Number	13
	Specifications List by Brake Size	14-15
	Part Number Cross Reference	16
CentruCast Brake Drums	Part Number Cross Reference	17
	Warranty	18
	Specifications List by Brake Size	19

Hub & Drum Assembly Components	20
---	-----------

CentriSet Trailer Hub Systems	21
--	-----------

CENTRIFUSE HUB & DRUM ASSEMBLIES

Hub Piloted 8 Hole	Front & Drive Axle applications	22
	Trailer Axle Applications	23
Hub Piloted 10 Hole	Front & Drive Axle Applications	23
	Trailer Axle Applications	25-26
DCN Assemblies	Front & Drive Axle Applications	27
	Trailer Axle Applications	28

CENTRUCAST HUB & DRUM ASSEMBLIES

Hub Piloted 8 Hole	Front, Drive & Trailer Axle Applications	29
Hub Piloted 10 Hole	Front & Drive Axle Applications	30
	Trailer Axle Applications	31
DCN Assemblies	Front & Drive Axle Applications	32
	Trailer Axle Applications	33
Low Platform Trailer Applications		34

FASTENERS

Wheel Bolts	36
Wheel Nuts	37

General Notes

IMPORTANT

Avoid mixing wheels or hub and bolt assemblies of different mounting systems with common bolt patterns.

Examples:

1. U.S. hub piloted (22mm wheel bolts) with 8 hole 275mm ISO (20mm wheel bolts).
2. DCN stud piloted with 10 hole hub piloted.

Inner Cap Nuts

Inner cap nuts for aluminum inner dual DCN wheels must be high-strength nuts made from material equivalent to SAE Grade 8 and should conform to industry part number 5988. These nuts are *not* available from Motor Wheel.

ABBREVIATIONS

DCN	Double Cap Nut
CLN	Cone Lock Nut
RH	Right hand
LH	Left hand
ABS Loc	ABS ring face location

WHEEL USAGE:

The abbreviations for Wheel Usage are:

S	For use with steel wheels
A	For use with aluminum wheels
S, A	For use with steel or aluminum wheels

Footnotes (Hub & Drum Assemblies sections)

The letters in the Footnotes column have the following meaning:

K	10 / 8.75
L	Lube fill: 1/4-18 NPTF - Iron Hubs, 9/16-18 O-ring Seal -Alum. Hubs
M	5.19" offset
Q	5.44" offset
T	For axles with 8.62" linings located at the 7" brake location
U	For axles with 8.62" linings located inboard of the 7" brake location
V	For industry axles except Meritor TN or TB
W	For Meritor TN or TB axles only
Y	Assembly includes an unbalanced drum
Z	80-tooth ABS rings for use with tire diameters 15" and 17.5"

ORDERING SUFFIXES

OPTIONAL PART NUMBER SUFFIXES FOR MOTOR WHEEL PRODUCTS

Bearing Cup	Suffix Added to Part Number for	Means
	T Hub Assy, Hub+Drum Assy	Timken case-hardened bearing cups
	TH Hub Assy, Hub+Drum Assy	Timken thru-hardened bearing cups
	H Hub Assy, Hub+Drum Assy	Hyatt / General Bearing Corp. cups
	SC Hub Assy, Hub+Drum Assy	Stemco-supplied bearing cups

Hub Color	W	Hub Assy, Hub+Drum Assy	White Hub Paint (Default is black).
-----------	---	-------------------------	-------------------------------------

Note: CentriFuse drums are always supplied BALANCED

Full-Cast Drum Balance

Z	Trailer Hub+Drum Assy's	Use Balanced Full-Cast Drum
---	-------------------------	-----------------------------

Assembly Nuts **Note: Default is 2 disposable nuts**

M	Full-Cast Hub+Drum Assy CLN	(2) usable wheel nuts installed
M	Inboard Hub+Drum Assy DCN	(20) usable wheel nuts installed (only Lowboy assys)
M1	Hub+Drum Assy CLN or DCN	(10) usable wheel nuts installed
M8	Hub+Drum Assy CLN (8-Hole)	(8) usable wheel nuts installed

Examples: **4809001 Z M1**= Hub+Drum 4809001 with Balanced Drum & 10 usable nuts
410050 T W = 410050 White Hub Assembly with Timken case-hardened cups



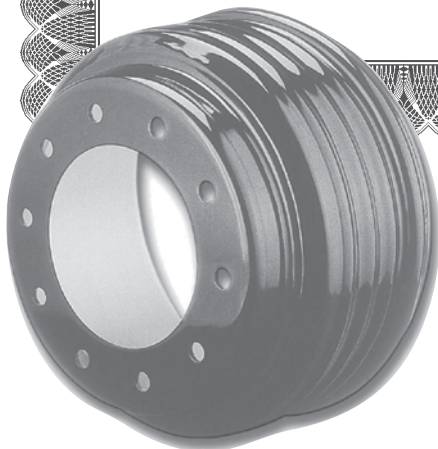
CentriFuse and CentriFuse Lite Brake Drums 10 Year Warranty

Motor Wheel warrants to the user that it will replace each CentriFuse 15" and 16-1/2" truck or trailer brake drum manufactured after January 1, 1994 which becomes unserviceable due to workmanship or material, breaks before ten years from date of manufacture, or before the 0.120" wear limit is reached – whichever occurs first. This warrant shall not apply if failure is due to other brake components, lack of required maintenance, misuse, damage by accident, improper installation, or adjustment of braking system.

Motor Wheels' obligation under this warranty is limited to replacing any CentriFuse brake drum that proves, upon inspection of failed parts and, if deemed necessary, associated vehicles and their maintenance records, to be defective within the applicable provisions of this warranty. Replacement products will be shipped FOB our factory.

Parts on which a warranty is claimed must, upon request, be returned to place of manufacture or to our authorized representative with transportation charges prepaid.

THIS WARRANTY IS IN LIEU OF ALL OTHER WARRANTIES, EXPRESS OR IMPLIED, INCLUDING THE WARRANTIES OF MERCHANTABILITY OR FITNESS FOR A PARTICULAR PURPOSE, APPLICATION OR USE. IN NO EVENT SHALL MOTOR WHEELS' LIABILITY EXCEED THE ORIGINAL PRICE OF THE PRODUCT, NOR SHALL MOTOR WHEEL BE LIABLE FOR SPECIAL, INCIDENTAL OR CONSEQUENTIAL DAMAGES.



8301 RONDA DRIVE – CANTON, MICHIGAN 48187 U.S.A.
www.motorwheelcvs.com

Brake Drums

CentriFuse®
Hub & Drum Assemblies

CentruCast™
Hub & Drum Assemblies

Fasteners



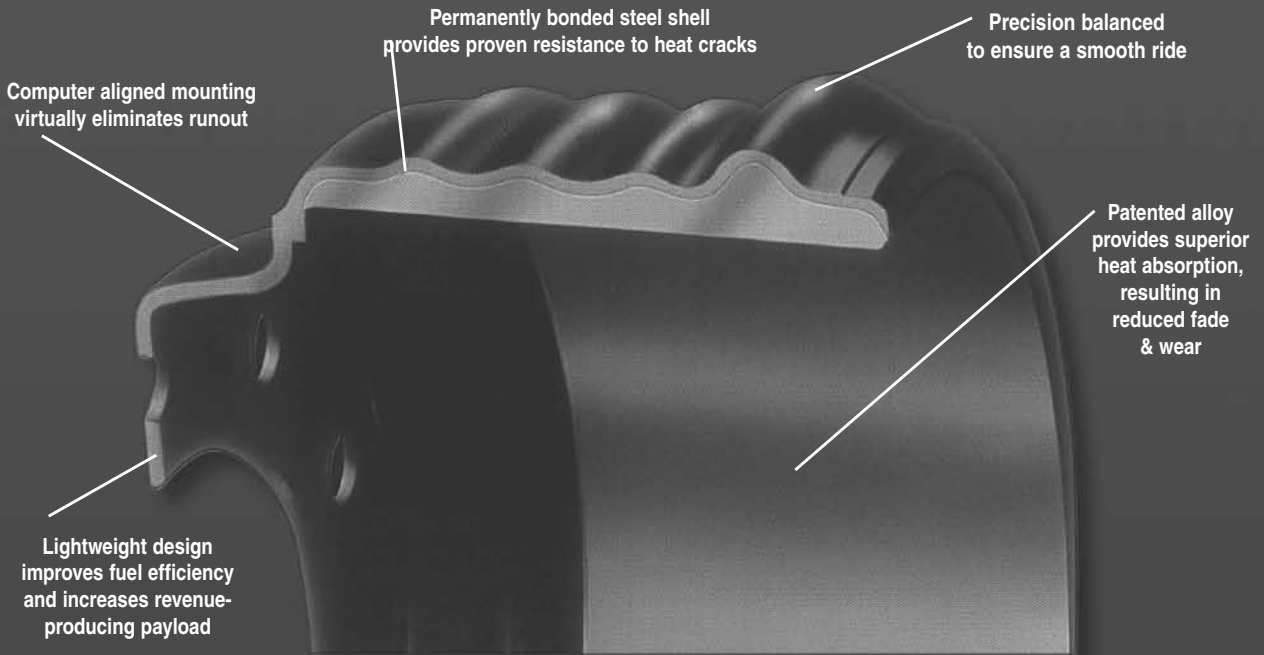
Genuine CentriFuse®

Quality Lightweight Brake Drums



Proven Performance backed by the ONLY standard 10 Year Written Warranty

With CentriFuse brake drums, breakage is not an option. The superior quality drum construction ensures exceptional drum strength. Combine this with 40% better lining life and over 70 years of reliable service to the trucking industry, and you'll know only CentriFuse offers you the safety, low cost of operation, and proven performance your business requires.



Safety conscious fleets

SPECIFY

Genuine CentriFuse®

Quality Lightweight Brake Drums

CentriFuse Lite®

Quality Lightweight Brake Drums



Brake Drums

CentriFuse®
Hub & Drum Assemblies

CentruCast™
Hub & Drum Assemblies

Fasteners

IDEAL APPLICATIONS

Ideal for weight sensitive applications such as:
Refrigerated trailers, tank trailers, bulk haulers or
fleets looking to increase their payload and fuel efficiency!

**Save up to 224 pounds per tractor/trailer
when you choose CentriFuse Lite®!**

	Weight of Comparable 16.5x7 Part Number	*WEIGHT SAVINGS* over cast drums			
		Weight Savings Per Drum	Per Truck Tandem Axles	Per Trailer Tandem Axles	Typical Tractor/Trailer Combination
Standard Full Cast	112				
ConMet CastLite®	100	12	48	48	96
Meritor X30™	94	18	72	72	144
Genuine CentriFuse®	90	22	88	88	176
CentriFuse Lite®	84	28	112	112	224

- 20,000 lb. axle rating
- Same great safety, balance, and reliability as Genuine CentriFuse with less weight!
- Backed by a 10 year written warranty
- Developed with over 70 years of proven technology and experience
- Combine with other lightweight MOTOR® WHEEL components for even more weight savings!

**SPECIFY MOTOR® WHEEL®
CENTRIFUSE LITE®**

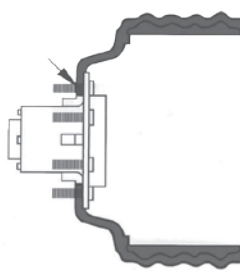
Meritor X30™ is a trademark of ArvinMeritor, Inc.
CastLite® is a registered trademark of Consolidated Metco, Inc.

BRAKE DRUM MOUNTING PROCEDURES

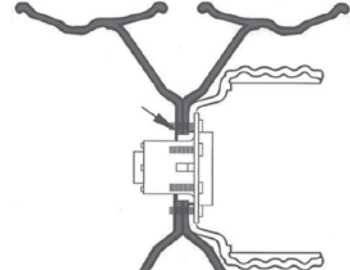
FOR HUB PILOTED 8 AND 10 HOLE WHEEL END SYSTEMS



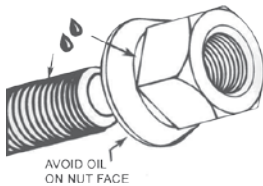
1 Locate one hub pilot pad at twelve o'clock position.



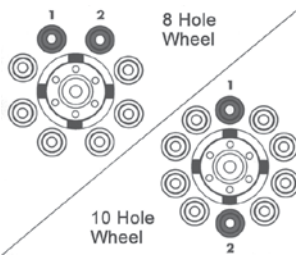
2 Before mounting wheels, be sure drum is properly positioned on raised step of pilot pad.



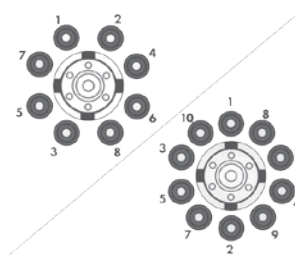
3 With wheels square to hub, mount inner and outer wheels as far back on the pilot pad as possible. Be sure both tire valve stems are accessible.



4 Apply two drops of oil on leading threads of studs and between nut body and flange. Avoid getting oil on face of nut, wheels, or brake drum.



5 Finger tighten nuts on top two positions on an 8 hole wheel; top and bottom positions on a 10 hole wheel. Apply remaining nuts finger-tight. Then snug all nuts to 50 ft.-lbs. following the sequence shown in step 6.



6 Complete procedure by tightening all the nuts in sequence shown to the recommended 450-500 ft.-lb. To ensure that the system will work as designed, maintain recommended torque.

IMPORTANT

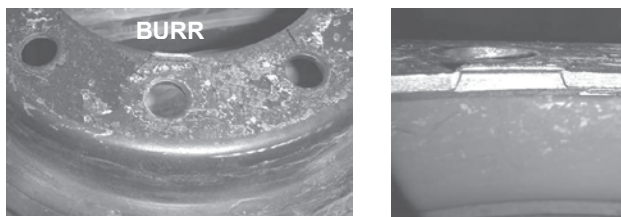
Axle end parts "seat in" during normal vehicle operation. Therefore, it is necessary to repeat torquing procedure before placing new trucks into service and after each tire change, or whenever nuts are removed. Torque to 450-500 ft.-lbs. Check torque output of impact wrenches frequently. Torque wrenches should be calibrated periodically. Record calibration dates.

BRAKE DRUM MOUNTING PROBLEMS

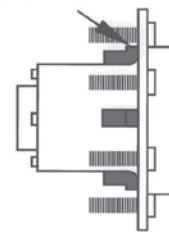
FOR PROPER BRAKE DRUM MOUNTING PROCEDURES, PLEASE REFER TO TECH DATA #TD4.

There are several causes of improper brake drum mounting. We will show you what the most common conditions are, how to identify them, and how to avoid problems.

1. The most common cause of improper brake drum mounting is not locating one hub pilot pad at the twelve o'clock position when mounting the drum. This causes the brake drum to be slightly cocked, and may not be noticeable to the naked eye. Sometimes this condition is confused with the brake drum being out of round, when in fact it is not, it has only been mismounted.



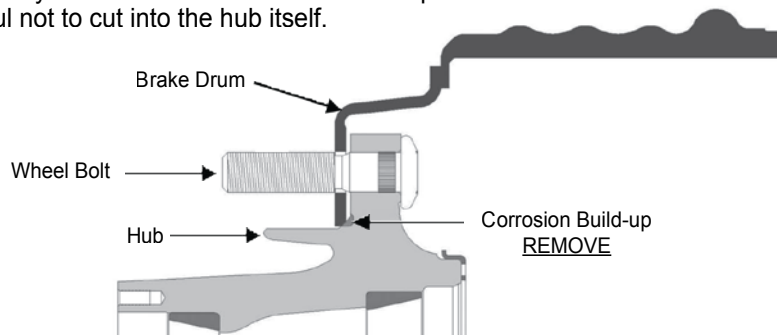
In this improper mounting, the hub's pilot pad cuts into the drum back pilot diameter, causing a "burr" to appear as shown above.



For proper mounting, locate one hub pilot pad at twelve o'clock position, making sure drum is properly positioned on raised step of pilot pad.

2. Corrosion can build up at the brake drum pilots, in the corner between the pilot step and the hub face. This corrosion can prevent a drum from seating completely against the hub, resulting in drum runout or a cracked drum when the wheel is torqued up.

If there is corrosion at the area shown, it must be removed before the drum is installed. Scrape away all corroded material and clean up with a wire brush. On aluminum hubs, be careful not to cut into the hub itself.



3. Dirt, debris, or rust on the hub mounting face can also keep the drum from mating solidly against the hub. If not corrected, this condition can lead to problems such as wheel nut torque loss or drum runout.

All foreign material should be removed from mating surfaces before the drum is installed. Normally a wire brush is suitable for cleaning the face hub. Be sure to look for any buildup around the wheel bolts. If a used drum is to be re-installed, both sides of its mounting face also need to be free of foreign matter.

RECOGNIZING AND CORRECTING BRAKING PROBLEMS

The following information deals with brake drum related problems, probable causes and possible solutions.

This information is intended as a guide to help truck operators and service persons recognize brake drum and brake drum related problems. It offers suggestions to help correct those problems. It is not intended as a complete service guide.

The information is based on reasonable probabilities. The described corrections are those most frequently used by Motor Wheel service engineers. The solutions/corrections given are those commonly used successfully. All brake system service work should be performed by a qualified brake mechanic.

Excessive Fade

Symptoms:

Braking power is lost or seriously reduced during extended brake use (particularly in severe braking situations).

Cause:

Excessive heat build-up in the drum and lining lead to "fade".

Heat build-up can change the friction quality of the brake lining and the drum. The friction coefficient between the lining and drum is reduced causing too much slip— not enough grip.

There can also be mechanical deflection in the system.

Excessive heat build-up can also cause drums to expand past the point of maximum brake shoe travel. Linings will no longer properly contact the braking surface and "fade" may be the result.



Possible Solutions:

1. Check the air pressure delivery system to be certain the system is in balance. Each brake on the vehicle must be doing its appropriate share of the work.

2. Look for the problems in the foundation brake. Inspect for proper brake adjustment.

3. Inspect drums. Look for the following conditions:

- Out-of-round braking surface
- Bell mouth
- Heat spots
- Polished braking surface

4. Measure inside diameter to be certain drums have not been over machined (working surface diameter re-machined beyond manufacturer's recommendation), or worn beyond usable limits. (See BRAKE DRUM MACHINING.)

Uneven Brake Pull

Symptoms:

Vehicle swerves to right or left when brakes are applied.

Cause:

This can be caused by one or more of several conditions. Uneven brake pull can be caused by a defective or damaged brake drum, by mismatched drums and/or linings; by improper functioning of other components of the brake system; or by oil or grease on the braking surfaces.

Possible Solutions:

Check for the following conditions:

- Make certain all mechanical parts are functioning equally at each brake location.
- Check all drums to be certain none have worn beyond "discard" diameter. Also be certain that no drum is damaged beyond usefulness (see DRUM PROBLEMS section, pages 9-11.)
- Make certain both drums on each axle are equal in braking surface diameter (see BRAKE DRUM MACHINING.)
- Check to see that there is no system imbalance from one side of the vehicle to the other and that all drums are doing their expected share of the work.
- Use same lining on both ends of a given axle. Make sure there is sufficient lining thickness remaining (consult lining manufacturer).
- Clean all foreign matter from the drum, linings and brake parts. If oil seal is leaking, replace. Be sure to follow seal manufacturer's removal and installation instructions. Avoid over-greasing camshaft.

Noisy Braking Action

Symptoms:

Brakes are noisy (squeal, growl, or chatter). When brakes are applied, vehicle might also vibrate.

Cause:

Any of the following conditions may be the cause:

- Polished drums
- Worn or damaged braking system parts
- Foreign matter on drums
- Glazed lining
- High friction lining
- Improper lining to drum contact
- Stretched brake shoes

Possible Solutions:

Pull drums and inspect for above conditions (see DRUM PROBLEMS section, pages 9-11).

Vehicle Vibration

Symptoms:

While in motion, vehicle pulsates or vibrates when brakes are not applied.

Cause:

Unrelated to spindle end assembly. Problem may be fault of one or a combination of any of the following:

- Suspension
- Steering
- Fifth wheel location
- Wheel base
- Cab mounting
- Drivetrain

Cause:

Spindle end assembly related. Problem may also be in one or more spindle end components:

- Out-of-round tire and/or wheel
- Out-of-balance tire and/or wheel
- Out-of-balance drum
- Improper installation of any spindle end component.

Possible Solution:

If cause is isolated to spindle end assembly:

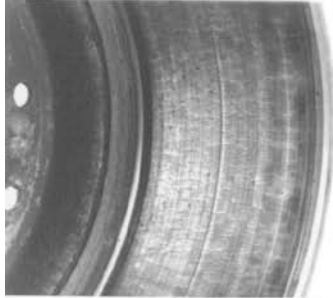
Check to determine if any of the spindle end running gear assemblies are out of balance or out of round. If so, then isolate the conditions—tire, rim/wheel, brake drum or hub. If the problem is with the tire and/or wheel or rim, refer to manufacturer's recommendations to correct the problem. If the imbalance is in the drum only, replace with a balanced drum.

DRUM PROBLEMS AND CONDITIONS

Heat Checked Drums

Condition:

The braking surface of the drum exhibits a network of fine, hairline cracks, commonly called heat checking.



Cause:

Heat created by brake applications first affects the portion of the braking surface in contact with the lining. This happens because this area begins to expand while the outer part of the drum is relatively cool.

A minute depth of the brake surface expands and buckles due to its high temperature. The brake lining presses more firmly on the high ridges caused by buckling. This action results in greater heat build up along the ridges. When the drum cools, fine cracks appear along the lines of buckling. As the heating and cooling cycles continue, the hairline cracks will enlarge. . . but usually the growth is gradual and the drum has completed its service life before the cracks become wide enough to be a problem.

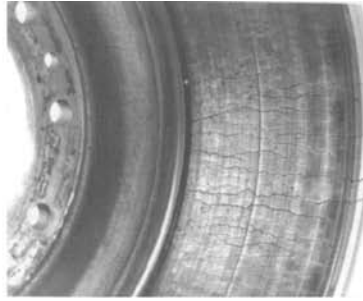
Correction:

Hairline cracks or heat checks will usually develop early in a drum's life. This is a normal condition and an indication that the drum is doing its work. Heat checking does not necessarily mean undue or premature wear. Normal drum and lining life can be expected.

Cracked Drum and Large Heat Checks (Progressive Deterioration Type)

Condition:

Exaggerated heat checking and wide cracks over part or all of the drum braking surface.



Cause:

Hairline cracks (described under foregoing heading, HEAT CHECKED DRUMS) continue to grow from the heat created by braking and from the force of the brake shoes against the drum. Excessive force will speed up crack growth and shorten drum life. As the cracks continue to grow, they may reduce the effectiveness of the drum. At some time, one or two or more large cracks may develop eventually cracking through to the outside surface of the drum.

Correction:

See cause and correction for blue drums and grease stained drums. Check and discard stretched brake shoes. Be sure there is no brake compounding. Eliminate any driver abuse of the trailer control valve. Replace lining that is not maintaining required frictional properties over the temperature range found in your fleet.

Drum Cracking (Parking Brake-Set Caused)

Condition:

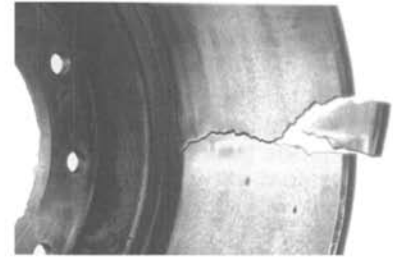
Cracked brake drums observed after truck has had parking brakes in set position for a period of time immediately after heavy brake usage.



Cause:

When excessively hot drums are allowed to cool while the brakes are set, the pressure of the shoes against the drum will interfere with the contraction of the cooling drum.

Depending on the amount of contraction, the drum can either distort or crack severely. Severely cracked drums can explode if kept in service.



Correction:

Check vehicle operating procedures. Whenever possible, eliminate instances of vehicle standing with brakes set against overheated drums.

Heat Spotted Drums

Condition:

Hard, slightly raised dark spots on the braking surface.



Cause:

The properties of grey iron can be changed by heating and cooling. Hard spots can result from frequent and excessive heating and cooling cycles. Heat spotting is often a result of a malfunction in the brake system, such as a dragging brake.

Correction:

Check brake system thoroughly to be certain it is functioning properly. Drum surface should be machined to eliminate raised spots and provide an even surface.

If spots are too hard for cutting tool, surface can be refurbished by a drum grinder. If hot spots cannot be removed within rewear and rebore limits, drums should be replaced.

Always replace drums in pairs on a common axle to maintain system balance.

Brake Drums

CentriFuse®
Hub & Drum Assemblies

CentruCast™
Hub & Drum Assemblies

Fasteners

DRUM PROBLEMS AND CONDITIONS (continued)

Blue Drums

Condition:

A high blue cast on the drum's braking surface. Unlike heat spotted drums, blue drums will generally have a uniform area of blue shading over part or all of the drum.

This condition may result in noisy and/or pulling brakes and excessive fade.



Cause:

Blue drums are caused by excessively high temperature buildup during braking. Blue drum condition is an indication that the drum's braking surface has changed. As a result, there may be less friction between lining and the drum surface.

Correction:

Check for unbalanced braking system; weak brake springs; worn camshaft bushings or broken parts; dragging shoes; over adjustment or out-of-round or distorted drums. Correct faulty system, replace broken or worn parts. If drum is only slightly out-of-round or distorted, it might be possible to correct it by machining the braking surface. If so, machine the drum on the other end of the axles as well.

If drum is not machinable, replace the drum and its companion on the same axle to maintain balanced braking.

Grease Stained Drums

Condition:

Discolored spots on the braking surface. The back and other parts of the drum will usually be covered with oil or grease. Oil or grease soaked brake lining and drum can reduce the amount of stopping friction, causing the other drums on the vehicle to work harder. This situation causes drum overheating, brake fade and, eventually, drum failure.



Cause:

Overgreasing the brake camshaft bushing, worn camshaft bushings, or leaking oil seal are usually the causes of this condition.

Correction:

Clean the brake drum and all adjacent metal brake parts with solvent. Replace faulty oil seals and remove excess grease from the camshaft. If brake lining is saturated with oil or grease, replace.

NOTE: Avoid over-greasing of camshaft bushing.

Scored Drums

Condition:

Drum will have medium to deep grooves around the circumference of the braking surface. Brake lining will show a similar wear pattern. Foreign metal particles can usually be found embedded in the lining.



Cause:

Scoring or rapid wear can often be traced to an unbalanced brake system. Incompatibility between the drum and lining can also be a cause. Abrasive material such as sand, grit, metal chips, etc., present in the drum interior or embedded in the lining might be a cause.

Correction:

Consult with drum and lining manufacturers for drum and lining compatibility recommendations. If brake system is out of balance, make necessary corrections and adjustments. Scored drums may be machined within recommended tolerances.

If road contaminants are present, install dust shield. If dust shield is holding particles in, then remove the lower half of the shield for a trial period.

Rivet Hole Damage

Condition:

Grooves or wear which coincide with the rivet hole locations in the linings.



Cause:

Brake surface damage can be caused by abrasive material collecting in the rivet holes or by excessively worn brake blocks which permit the rivets to contact the drum surface.

Correction:

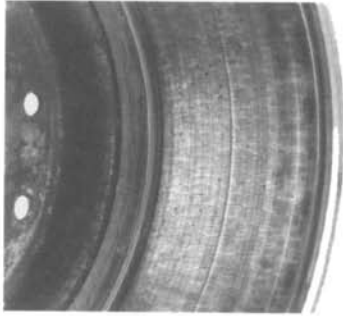
Replace worn lining with bonded lining; or, if riveted lining is used, insert plugs (of same lining material) into rivet holes.

DRUM PROBLEMS AND CONDITIONS (continued)

Excessive Drum Edge Wear

Condition:

Drum will show significantly greater wear at both edges. A raised edge or lip will form at drum surface open end where the lining does not make contact.



Cause:

Abrasive material is trapped by the "lip" causing excessive drum edge wear.

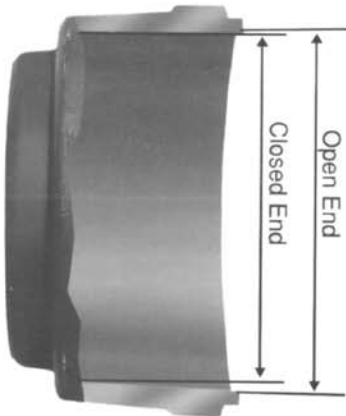
Correction:

Counter bore or chamfer drum's open end edge just enough to remove lip. If no dust shield is present, install one. If a dust shield is holding in abrasive material, remove the bottom half for a trial period.

Bell Mouth Distortion

Condition:

Drum diameter is greater at the open end of the drum than at the closed end. Brake lining will usually show greater wear on the side next to the closed end of the drum.



Cause:

Bell mouting is often caused by pad pressure being diverted due to worn anchor pins and/or anchor pin holes.

Since the open end circumference of the drum has less resistance to the pad pressure, it can be stretched by extreme brake force.

Correction:

Bell mouth drums should be replaced. Replace both drums on a common axle to maintain proper brake balance. A full examination of the braking system should be conducted to determine why excessive pressure is being exerted on a given drum. A defective or out-of-balance system should be corrected, and worn or broken parts should be replaced.

Out-of-Round Drums

Condition:

Gauge shows varied braking surface diameters when checked at several points around the drum. Inside diameter variance should not exceed .010". Drum may also show uneven heat checking.

Cause:

Out-of-round drum can be the result of excessive heat build-up from brake pressure overload due to incompatibility between the drum and lining, or an out-of-balance brake system.

Out-of-round can also be caused by careless handling during shipping, from poor storage conditions or rough handling during installation. It can also be due to improper installation, i.e., foreign material lodged between the drum back and hub or cast spoke wheel, or because drum was not properly positioned on hub pilot.

Out-of-round can also be caused when parking brakes are set while drums are extremely hot.

Correction:

Machine the drum and its companion drum on the same axle if drum thickness is sufficient to eliminate the out-of-round condition within recommended machining limits.

Otherwise, replace both drums.

NOTE: "Out-of-round" condition should not be confused with "Run Out." When drum is out-of-round, gauge will show varied braking surface diameters when checked at several points. Excessive "Run Out" is when braking surface of the drum is not concentric with its piloting center.

All drum makes have a factory tolerance for braking surface run out. Centrifuse drum factory tolerance is .015" total indicator reading (T.I.R.) when piloted on the hub.

Polished Drums

Condition:

Braking surface has mirrorlike finish.



Cause:

Glazed lining surface has caused a slick surface to develop on the drum. The coefficient of friction is seriously impeded. This condition can result in noisy or pulling brakes and longer vehicle stops.

Correction:

To alter glazed lining condition, roughen lining surface with emery cloth or a wire brush. Drum should be machined or sanded to eliminate glazed finish.

Brake Drums

CentriFuse®
Hub & Drum Assemblies

CentruCast™
Hub & Drum Assemblies

Fasteners

CentriFuse Brake Drums

Drum Back / Band to Drum

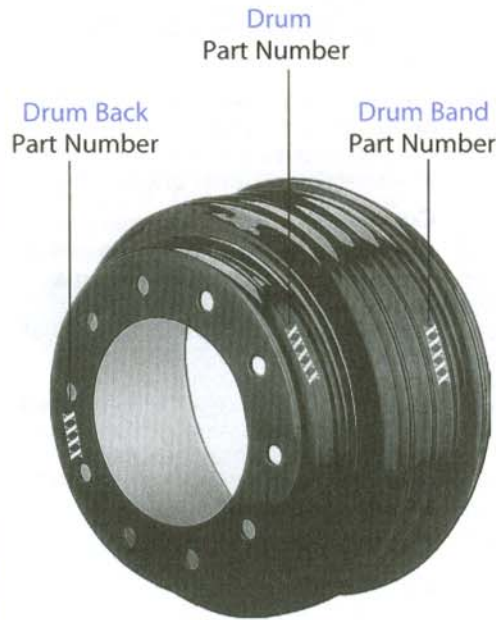
Brake Drums

CentriFuse®
Hub & Drum Assemblies

CentruCast™
Hub & Drum Assemblies

Fasteners

Drum Back Number	CentriFuse Drum Part Number
87157	87156B
87406	87405B
87416	87415B
87418	87417B
87438	89855B
88116	88114B
88117	88115B
88152	87407B
88253	87397B
88435	88739B
88508	88507B
88798	600002
88798	88797B
88798	89571B
88798	89651B
88810	88814B
89873	89874B
90170	90172B
90173	90174B
90175	90176B
90599	600001
90599	90600B
91008	87128B
91024	87945BK
91025	88870BK
91026	89870BK
91029	90660BK
91052	91049B
91136	91137BK
91264	91265B
91293	90148B
91294	90089BK
91439	91438B
91481	91482B
91507	90137B
91507	90499B
91538	600084
91538	89877B
91538	89996B
91538	90434B
91538	90486B
91588	91589B
91611	87101B
91611	87295B
91611	87615B
91611	89467B
91654	91655B
91722	91723B
91724	91725B
91793	91792B
91813	91812B



Drum Band Number	CentriFuse Drum Part Number
610001	600002
610001	600084
87105	87101B
87105	87156B
87105	87405B
87105	87407B
87105	87415B
87105	87417B
87105	88797B
87105	89996B
87105	90499B
87132	87128B
87132	90148B
87132	90172B
87132	91655B
87298	87295B
87298	87397B
87298	89651B
87298	89877B
87298	91049B
87298	91265B
87311	90174B
87311	90176B
87369	600001
87369	88507B
87369	88739B
87369	88814B
87369	89874B
87369	90137B
87369	90600B
87618	87615B
87618	89467B
87618	89571B
87618	90434B
87618	90486B
87618	91812B
89852	89855B
89852	91589B
91028	87945BK
91028	88114B
91028	88115B
91028	88870BK
91028	89870BK
91028	90089BK
91028	90660BK
91028	91137BK
91480	91438B
91480	91482B
91480	91723B
91480	91725B
91795	91792B

CentriFuse Brake Drums

Numerical Index



Mounting Type	CentriFuse Drum Part No.	Brake Size	Wt. Lb	Over All Depth	Brake Surf. Width	Hub Pilot Dia.	Bolt Circle Dia.	# of Bolt Holes	Bolt Hole Dia.	Drum Back No.	Drum Band No.	Special Information
O	600001	16.5 x 5	75	8.88	5.46	8.78	285.75	10	1.25	90599	87369	
O	600002	16.5 x 7	84	10.41	7.64	9.00	275	8	0.92	88798	610000	CentriFuse Lite
O	600084	16.5 x 7	84	10.41	7.64	8.78	285.75	10	0.96	91538	610000	CentriFuse Lite
O	87101B	16.5 x 7	90	10.41	7.64	8.53	11.25	10	0.81	91611	87105	Replaces 86879
O	87128B	15 x 7	90	10.22	7.42	8.53	11.25	10	0.81	91008	87132	Replaces 86935
O	87156B	16.5 x 7	90	10.41	7.64	9.00	11.25	10	0.81	87157	87105	Replaces 86232
O	87295B	16.5 x 7	89	10.04	7.27	8.53	11.25	10	0.81	91611	87298	
I	87397B	16.5 x 7	84	8.13	7.24	9.44	11	5	0.78	88253	87298	Replaces 85593 & 86141
I	87405B	16.5 x 7	84	8.50	7.64	11.25	12.75	5	0.77	87406	87105	CA, Replaces 85968B
I	87407B	16.5 x 7	85	9.66	7.58	9.44	11.25	10	0.81	88152	87105	Replaces 85369, 85831, 86140, 86909
I	87415B	16.5 x 7	85	8.66	7.64	9.50	11.25	10	0.81	87416	87105	Replaces 85130 & 86134
I	87417B	16.5 x 7	86	8.66	7.64	9.44	11.25	10	0.81	87418	87105	Replaces 85617
O	87615B	16.5 x 8.62	96	12.15	9.38	8.53	11.25	10	0.81	91611	87618	Replaces 86889
O	87945BK	15 x 4	65	8.84	4.40	8.53	11.25	10	1.25	91024	91028	
O	88114B	15 x 4	64	8.53	4.49	9.00	11.25	10	1.25	88116	91028	Replaces 87439, 91068B
I	88115B	15 x 4	64	7.89	4.46	9.44	11.25	10	0.81	88117	91028	CA, Replaces 87357
O	88507B	16.5 x 5	77	9.53	5.81	8.53	11.25	10	1.25	88508	87369	CA
O	88739B	16.5 x 5	74	8.59	5.87	8.53	11.25	10	1.25	88435	87369	
O	88797B	16.5 x 7	90	10.41	7.64	9.00	275	8	0.92	88798	87105	
O	88814B	16.5 x 5	76	9.21	5.83	9.00	275	8	0.92	88810	87369	
O	88870BK	15 x 4	64	8.84	4.40	9.00	275	8	0.92	91025	91028	
O	89467B	16.5 x 8.62	96	11.87	9.08	8.53	11.25	10	0.81	91611	87618	
O	89571B	16.5 x 8.62	98	12.15	9.36	9.00	275	8	0.92	88798	87618	
O	89651B	16.5 x 7	89	10.04	7.24	9.00	275	8	0.92	88798	87298	
O	89855B	15 x 6	79	9.30	6.50	9.00	11.25	10	1.25	87438	89852	Replaces 89818
O	89870BK	15 x 4	65	8.84	4.52	8.78	285.75	10	1.25	91026	91028	
O	89874B	16.5 x 5	77	9.53	5.81	8.78	285.75	10	1.25	89873	87369	
O	89877B	16.5 x 7	89	10.04	7.27	8.78	285.75	10	0.96	91538	87298	
O	89996B	16.5 x 7	90	10.41	7.64	8.78	285.75	10	0.96	91538	87105	
O	90089BK	15 x 4	64	8.46	4.51	8.78	285.75	10	1.25	91294	91028	
O	90137B	16.5 x 5	74	8.59	5.87	8.78	285.75	10	1.25	91507	87369	
O	90148B	15 x 7	90	10.22	7.39	8.78	285.75	10	0.96	91293	87132	CA
O	90172B	15 x 7	89	9.80	7.43	8.78	285.75	10	0.96	90170	87132	CA
O	90174B	15 x 5	78	9.53	5.81	8.78	285.75	10	1.25	90173	87311	
O	90176B	15 x 5	78	9.53	5.81	9.00	275	8	0.92	90175	87311	
O	90434B	16.5 x 8.62	96	11.87	9.08	8.78	285.75	10	0.96	91538	87618	
O	90486B	16.5 x 8.62	98	12.15	9.38	8.78	285.75	10	0.96	91538	87618	
O	90499B	16.5 x 7	90	10.41	7.64	8.78	285.75	10	1.25	91507	87105	CA
O	90600B	16.5 x 5	76	9.22	5.82	8.78	285.75	10	1.25	90599	87369	
O	90660BK	15 x 4	64	8.84	4.52	8.78	285.75	10	0.96	91029	91028	
O	91137BK	15 x 4	64	8.53	4.46	8.78	285.75	10	0.96	91136	91028	
O	91265B	16.5 x 6	88	9.62	6.68	8.78	285.75	10	1.25	91264	87298	Replaces 91049B
O	91438B	15 x 8.62	90	11.19	9.11	9.00	275	8	0.92	91439	91480	For industry axles except Meritor TN
O	91482B	15 x 8.62	90	11.19	9.11	8.78	285.75	10	0.96	91481	91480	For industry axles except Meritor TN
O	91589B	15 x 6	80	9.30	6.50	8.78	285.75	10	1.25	91588	89852	
O	91655B	15 x 7	90	10.22	7.42	9.00	275	8	0.92	91654	87132	
O	91723B	15 x 8.62	90	11.44	9.11	9.00	275	8	0.92	91722	91480	For Meritor TN axle only
O	91725B	15 x 8.62	90	11.44	9.11	8.78	285.75	10	0.96	91724	91480	For Meritor TN or TB axle only
O	91792B	16.5 x 8	95	10.90	8.55	8.78	285.75	10	0.96	91793	91795	
O	91812B	16.5 x 8.62	100	11.46	9.22	8.78	285.75	10	0.96	91813	87618	0.375 thick mtg.

Notes: CentriFuse drum mounting face is 0.25" thick unless otherwise noted.
 I = Inboard Mounted Drums
 O = Outboard Mounted Drums
 All CentriFuse Drums are Balanced

Notes: CA = Check Availability
 For general notes, see page 2

Brake Drums

CentriFuse®
 Hub & Drum Assemblies

CentruCast™
 Hub & Drum Assemblies

Fasteners

CentriFuse Brake Drums

Brake Size Index

Mtg. Type	CentriFuse Drum Part No.	Brake Size	Wt. Lb	Over All Depth	Brake Surf. Width	Hub Pilot Dia.	Bolt Circle Dia.	No. Bolt Holes	Bolt Hole Dia.	Drum Back No.	Drum Band No.	Special Information
15 x 4 Brake Size												
I	88115B	15 x 4	64	7.89	4.46	9.44	11.25	10	0.81	88117	91028	CA, Replaces 87357
O	90089BK	15 x 4	64	8.46	4.51	8.78	285.75	10	1.25	91294	91028	
O	88114B	15 x 4	64	8.53	4.49	9.00	11.25	10	1.25	88116	91028	Replaces 87439, 91068B
O	91137BK	15 x 4	64	8.53	4.46	8.78	285.75	10	0.96	91136	91028	
O	87945BK	15 x 4	65	8.84	4.40	8.53	11.25	10	1.25	91024	91028	
O	88870BK	15 x 4	64	8.84	4.40	9.00	275	8	0.92	91025	91028	
O	89870BK	15 x 4	65	8.84	4.52	8.78	285.75	10	1.25	91026	91028	
O	90660BK	15 x 4	64	8.84	4.52	8.78	285.75	10	0.96	91029	91028	
15 x 5 Brake Size												
O	90174B	15 x 5	78	9.53	5.81	8.78	285.75	10	1.25	90173	87311	
O	90176B	15 x 5	78	9.53	5.81	9.00	275	8	0.92	90175	87311	
15 x 6 Brake Size												
O	89855B	15 x 6	79	9.30	6.50	9.00	11.25	10	1.25	87438	89852	Replaces 89818
O	91589B	15 x 6	80	9.30	6.50	8.78	285.75	10	1.25	91588	89852	
15 x 7 Brake Size												
O	90172B	15 x 7	89	9.80	7.43	8.78	285.75	10	0.96	90170	87132	CA
O	87128B	15 x 7	90	10.22	7.42	8.53	11.25	10	0.81	91008	87132	Replaces 86935
O	90148B	15 x 7	90	10.22	7.39	8.78	285.75	10	0.96	91293	87132	CA
O	91655B	15 x 7	90	10.22	7.42	9.00	275	8	0.92	91654	87132	
15 x 8.62 Brake Size												
O	91438B	15 x 8.62	90	11.19	9.11	9.00	275	8	0.92	91439	91480	For industry axles except Meritor TN
O	91482B	15 x 8.62	90	11.19	9.11	8.78	285.75	10	0.96	91481	91480	For industry axles except Meritor TN
O	91723B	15 x 8.62	90	11.44	9.11	9.00	275	8	0.92	91722	91480	For Meritor TN axle only
O	91725B	15 x 8.62	90	11.44	9.11	8.78	285.75	10	0.96	91724	91480	For Meritor TN or TB axle only
16.5 x 5 Brake Size												
O	88739B	16.5 x 5	74	8.59	5.87	8.53	11.25	10	1.25	88435	87369	
O	90137B	16.5 x 5	74	8.59	5.87	8.78	285.75	10	1.25	91507	87369	
O	600001	16.5 x 5	75	8.88	5.46	8.78	285.75	10	1.25	90599	87369	
O	88814B	16.5 x 5	76	9.21	5.83	9.00	275	8	0.92	88810	87369	
O	90600B	16.5 x 5	76	9.22	5.82	8.78	285.75	10	1.25	90599	87369	
O	88507B	16.5 x 5	77	9.53	5.81	8.53	11.25	10	1.25	88508	87369	CA
O	89874B	16.5 x 5	77	9.53	5.81	8.78	285.75	10	1.25	89873	87369	

Notes:
 CentriFuse drum mounting face is 0.25" thick unless otherwise noted.
 I - Inboard Mounted Drums
 O - Outboard Mounted Drums
 All CentriFuse Drums are Balanced

Notes: CA - Check Availability
 For general notes see page 2

Brake Drums

CentriFuse®
Hub & Drum Assemblies

CentruCast™
Hub & Drum Assemblies

Fasteners

CentriFuse Brake Drums

Brake Size Index (continued)



Mtg. Type	CentriFuse Drum Part No.	Brake Size	Wt. Lb	Over All Depth	Brake Surf. Width	Hub Pilot Dia.	Bolt Circle Dia.	No. Bolt Holes	Bolt Hole Dia.	Drum Back No.	Drum Band No.	Special Information
16.5 x 6 Brake Size												
O	91265B	16.5 x 6	88	9.62	6.68	8.78	285.75	10	1.25	91264	87298	Replaces 91049B
16.5 x 7 Brake Size												
I	87397B	16.5 x 7	84	8.13	7.24	9.44	11	5	0.78	88253	87298	Replaces 85593 & 86141
								6	0.66			
I	87405B	16.5 x 7	84	8.50	7.64	11.25	12.75	5	0.77	87406	87105	CA, Replaces 85968B
								6	0.77			
I	87415B	16.5 x 7	85	8.66	7.64	9.50	11.25	10	0.81	87416	87105	Replaces 85130 & 86134
I	87417B	16.5 x 7	86	8.66	7.64	9.44	11.25	10	0.81	87418	87105	Replaces 85617
I	87407B	16.5 x 7	85	9.66	7.58	9.44	11.25	10	0.81	88152	87105	Replaces 85369, 85831, 86140, 86909
O	87295B	16.5 x 7	89	10.04	7.27	8.53	11.25	10	0.81	91611	87298	
O	89651B	16.5 x 7	89	10.04	7.24	9.00	275	8	0.92	88798	87298	
O	89877B	16.5 x 7	89	10.04	7.27	8.78	285.75	10	0.96	91538	87298	
O	600002	16.5 x 7	84	10.41	7.64	9.00	275	8	0.92	88798	610000	CentriFuse Lite
O	600084	16.5 x 7	84	10.41	7.64	8.78	285.75	10	0.96	91538	610000	CentriFuse Lite
O	87101B	16.5 x 7	90	10.41	7.64	8.53	11.25	10	0.81	91611	87105	Replaces 86879
O	87156B	16.5 x 7	90	10.41	7.64	9.00	11.25	10	0.81	87157	87105	Replaces 86232
O	88797B	16.5 x 7	90	10.41	7.64	9.00	275	8	0.92	88798	87105	
O	89996B	16.5 x 7	90	10.41	7.64	8.78	285.75	10	0.96	91538	87105	
O	90499B	16.5 x 7	90	10.41	7.64	8.78	285.75	10	1.25	91507	87105	CA
16.5 x 8 Brake Size												
O	91792B	16.5 x 8	95	10.90	8.55	8.78	285.75	10	0.96	91793	91795	
16.5 x 8.62 Brake Size												
O	91812B	16.5 x 8.62	100	11.46	9.22	8.78	285.75	10	0.96	91813	87618	0.375 thick mtg.
O	89467B	16.5 x 8.62	96	11.87	9.08	8.53	11.25	10	0.81	91611	87618	
O	90434B	16.5 x 8.62	96	11.87	9.08	8.78	285.75	10	0.96	91538	87618	
O	87615B	16.5 x 8.62	96	12.15	9.38	8.53	11.25	10	0.81	91611	87618	Replaces 86889
O	89571B	16.5 x 8.62	98	12.15	9.36	9.00	275	8	0.92	88798	87618	
O	90486B	16.5 x 8.62	98	12.15	9.38	8.78	285.75	10	0.96	91538	87618	

Notes: CentriFuse drum mounting face is 0.25" thick unless otherwise noted.
 I - Inboard Mounted Drums
 O - Outboard Mounted Drums
 All CentriFuse Drums are Balanced

Notes: CA - Check Availability
 For general notes see page 2

Brake Drums

CentriFuse®
 Hub & Drum Assemblies

CentruCast™
 Hub & Drum Assemblies

Fasteners

CentriFuse Brake Drums Cross Reference



Brake Drums

CentriFuse®
Hub & Drum Assemblies

CentruCast™
Hub & Drum Assemblies

Fasteners

ArvinMeritor (Dayton / X30)	CentriFuse
012517	87397B
012677	87397B
120001	87397B
120017	87397B
120038	87397B
120075	87405B
120389	87397B
120643	87415B
122155	87397B
122194	87415B
122203	87415B
122287	87405B
122332	87156B
122333	87128B
122340	87415B
122453	87295B
122460	87615B
122505	88115B
122506	87417B
122550	87156B
122607	87101B
122810	87615B
123022	89877B
123207	89996B
123312	88114B
123315	87128B
123404	89996B
123423	89870BK
123448	89870BK
53-123512-002	90089BK
53-123519-002	87397B
53-123535-002	91792B
53-123537-002	89996B
53-123542-002	89870BK
53-123544-002	91812B
53-123564-002	87101B
53-123565-002	87156B
53-123566-002	88797B
53-123567-002	91137BK
53-123568-002	90660BK
53-123575-002	88870BK
53-123579-002	89571B
53-123580-002	87615B
53-123581-002	90486B
53-123582-002	87295B
53-123583-002	89877B
53-123584-002	89651B
53-123585-002	87407B
53-123586-002	87417B
53-123587-002	87415B
53-123588-002	88814B
53-123589-002	90600B

ArvinMeritor (X30)	CentriFuse
53-123591-002	90148B
53-123592-002	87128B
53-123594-002	91655B
53-123595-002	88114B
53-123596-002	89467B
53-123597-002	90434B
53-123598-002	90174B
53-123599-002	90176B
53-123600-002	90174B
53-123601-002	91725B
53-123602-002	91723B
53-123603-002	91482B
53-123604-002	91438B
53-123605-002	88739B
53-123606-002	90137B
53-123607-002	91265B
53-123608-002	91265B
53-123609-002	87945BK
53-123627-002	600001
Gunite	CentriFuse
2546B	87417B
2983C	87397B
3018A	87415B
3097A	90172B
3141	87156B
3141B	88797B
3166	87101B
3219	87128B
3219A	90148B
3295A	87405B
3402	89877B
3402A	89651B
3483	87101B
3574	87945BK
3596	90089BK
3598A	88814B
3600	90499B
3600A	89996B
3610	88115B
3630	90600B
3686	91589B
3687	91265B
3699	87295B
3710	90600B
3721A	90089BK
3726X	89870BK
3758	90600B
3782	91792B
3800X	89870BK
3807A	91812B

Webb	CentriFuse
60528	90089BK
60545	89870BK
60864 B	89996B
60875 B	88797B
60893 B	87101B
60895 B	87156B
61571	87128B
61991	91725B
64483	88115B
65157	89855B
65543	88870BK
65545	89870BK
65547	90089BK
65550	87945BK
65739	88739B
66800	91792B
66811	89467B
66814	90486B
66815	87615B
66816	89571B
66854A	91812B
66864	89996B
66873	89877B
66875	88797B
66878	89651B
66884	89996B
66892	87295B
66893	87101B
66895	87156B
67101B	87101B
67128B	87128B
67156B	87156B
67397B	87397B
67405B	87405B
67415B	87415B
67434B	90434B
67518	87397B
67615B	87615B
67945B	87945BK
68730	87415B
68797B	88797B
68814B	88114B
68872B	88870BK
68921	87417B
68981	87405B
69571B	89571B
69870B	89870BK
69996B	89996B

CentruCast Brake Drums Cross Reference



ArvinMeritor (Dayton)	CentruCast
120586	633076
122453	2308002
122898	630003
122990	633076
123207	2308709
123207	2308712
123254	2308705
123365	633096
123366	630001
123367	2308401
123370	2308406
123371	2308406
123383	2308704
123386	2308705
123388	2308704
123406	630006
123409	630003
123520	630007
123570	630000
129297	630005

ConMet	CentruCast
107150	2308709
107150	2308712
107164	630005
107193	2308804
107453	2308704
107507	2308401
107637	630007
107638	630000
107875	630003
107902	630004
Gunite	CentruCast
2546C	633076
3141B	630003
3219A	2308400
3401A	630003
3402	633050
3557	126631
3600A	2308712
3600AX	2308709
3687X	2308804
3699	2308002
3721AX	2308705
3721X	2308401
3726X	630005
3741X	630004
3758	2308704
3782	630007
3800X	630005

Webb	CentruCast
61527	2308401
61528	2308705
61577	2308400
61591	2308001
62671	2308804
63631	126631
63680	630002
65162	2308708
65543B	630004
65545B	630001
65554	630005
65654	2308406
66800	630007
66814	630006
66852	2308002
66854	630000
66864	2308712
66864B	2308709
66873	633050
66875	630003
66884	633096
66892	2308002
68765	633076

Brake Drums

CentriFuse®
Hub & Drum Assemblies

CentruCast™
Hub & Drum Assemblies

Fasteners



CentruCast™ Hub & Brake Drum 1 Year Limited Warranty

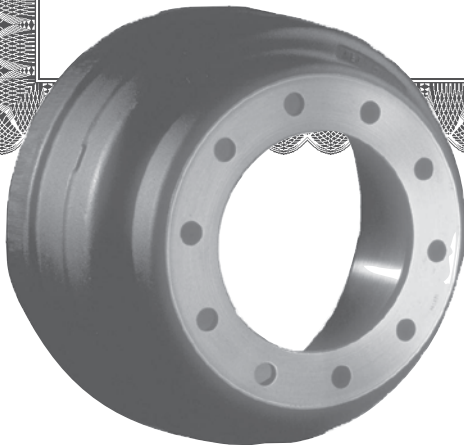
FOR TRUCKS, TRAILERS, AND BUSES

Motor Wheel warrants to the user to replace each on-highway CentruCast ductile iron Hub or Brake Drum which becomes unserviceable within one year of date of manufacture due to functional defects in workmanship or materials, excluding finish.

This warranty shall not apply if failure is due to other components, lack of required maintenance, misuse, damage by accident, improper installation or adjustment, excessive speeds, or other abnormal or severe operating conditions.

Motor Wheel's obligation under this warranty is limited, upon inspection of failed parts, vehicles, and maintenance records, to replace, FOB our factory, any part which our examination discloses to be defective. Parts on which a warranty is claimed must, upon request, be returned to place of manufacture or to our authorized representative with transportation charges prepaid.

THIS WARRANTY IS IN LIEU OF ALL OTHER WARRANTIES, EXPRESS OR IMPLIED, INCLUDING THE WARRANTIES OF MERCHANTABILITY OR FITNESS FOR A PARTICULAR PURPOSE, APPLICATION OR USE. IN NO EVENT SHALL MOTOR WHEEL'S LIABILITY EXCEED THE ORIGINAL PRICE OF THE PRODUCT, NOR SHALL MOTOR WHEEL BE LIABLE FOR SPECIAL, INCIDENTAL OR CONSEQUENTIAL DAMAGES.



8301 RONDA DRIVE – CANTON, MICHIGAN 48187 U.S.A.

www.motorwheelcvs.com

CentruCast Brake Drums

Brake Size Index



Mtg. Type	Full Cast Drum Part No.	Brake Size	Wt. Lb	Overall Depth	Brake Surface Width	Hub Pilot Dia.	Bolt Circle Dia.	No. Bolt Holes	Bolt Hole Dia.	Special Information
12.25 x 7.5 Brake Size										
I	126631	12.25 x 7.5	86	10.50	8.24	7.13	8.75	10	0.84	Unbalanced
O	630002	12.25 x 7.5	92	11.15	8.16	9.00	275	8	0.92	Unbalanced
15 x 4 Brake Size										
O	630001	15 x 4	78	9.20	4.61	8.78	285.75	10	0.94	Balanced
O	630004	15 x 4	78	9.20	4.61	9.00	275	8	0.92	Balanced
O	630005	15 x 4	78	9.20	4.61	8.78	285.75	10	1.26	Balanced
O	2308401	15 x 4	78	8.82	4.58	8.78	11.25	10	0.94	Balanced
O	2308705	15 x 4	78	8.82	4.58	8.78	11.25	10	1.26	Balanced
15 x 7 Brake Size										
O	633049	15 x 7	101	10.47	7.63	8.78	11.25	10	1.02	Balanced, Replaces 2308400, 0.56" Drum Face
16.5 x 5 Brake Size										
O	2308406	16.5 x 5	95	9.48	5.83	8.78	11.25	10	0.94	Balanced
O	2308704	16.5 x 5	95	9.48	5.83	8.78	11.25	10	1.26	Balanced
16.5 x 6 Brake Size										
O	633017	16.5 x 6	110	9.75	6.63	8.78	11.25	10	1.26	Balanced, Replaces 2308804, 0.63" Drum Face
O	633027	16.5 x 6	110	9.75	6.63	8.78	11.25	10	0.94	Balanced, Replaces 2308708, 0.63" Drum Face
16.5 x 7 Brake Size										
O	2308002	16.5 x 7	106	10.38	7.51	8.53	11.25	10	0.84	Balanced
O	2308709	16.5 x 7	112	10.59	7.59	8.78	11.25	10	0.94	Balanced
O	2308712	16.5 x 7	112	10.59	7.59	8.78	11.25	10	0.94	Unbalanced
O	630003	16.5 x 7	113	10.59	7.59	9.00	275	8	0.92	Balanced
O	630003A	16.5 x 7	113	10.59	7.59	9.00	275	8	0.92	Unbalanced
O	633096	16.5 x 7	122	10.59	7.59	8.78	11.25	10	0.94	Balanced
O	633096A	16.5 x 7	122	10.59	7.59	8.78	11.25	10	0.94	Unbalanced
16.5 x 8 Brake Size										
O	630007	16.5 x 8	118	11.23	8.70	8.78	11.25	10	0.94	Balanced
O	630007A	16.5 x 8	118	11.23	8.70	8.78	11.25	10	0.94	Unbalanced
16.5 x 8.62 Brake Size										
O	630000	16.5 x 8.62	125	11.67	9.18	8.78	11.25	10	0.94	Balanced, 0.62" Drum Face
O	630000A	16.5 x 8.62	125	11.67	9.18	8.78	11.25	10	0.94	Unbalanced, 0.62" Drum Face
O	630006	16.5 x 8.62	125	12.14	9.18	8.78	11.25	10	0.94	Balanced
O	630006A	16.5 x 8.62	125	12.14	9.18	8.78	11.25	10	0.94	Unbalanced

Notes:

I - Inboard Mounted Drums

O - Outboard Mounted Drums

Cast drum mounting face is 0.50" thick unless otherwise noted.

For general notes, see page 2

Brake Drums

CentriFuse®
Hub & Drum Assemblies

CentruCast™
Hub & Drum Assemblies

Fasteners

Brake Drums

CentriFuse®
Hub & Drum Assemblies

CentruCast™
Hub & Drum Assemblies

Fasteners

MOTOR WHEEL®

COMMERCIAL VEHICLE SYSTEMS

Your COMPLETE SOURCE for Hub & Drum Assemblies



CentriSet® Hub System is a Pre-Adjusted Low Maintenance, Low Weight, and Low Cost Premium Long-Life Wheel-End System. CentriSet offers easy installation due to built-in bearing settings; no installation adjustment is required. This premium system includes a 5-year / 500,000 mile warranty for added peace of mind.



Lightweight Ductile Iron hubs are a versatile and economical choice for trailer applications. Strong yet lightweight, these tough ductile iron hubs do the job!



Aluminum hubs are available for tractor or trailer applications. These hubs offer excellent weight savings when paired with a CentriFuse Lite brake drum!



CentriFuse Lite® drums are ultra lightweight at only 84 lbs! Ideal for weight sensitive applications or for fleets looking to increase fuel efficiency or payload. These incredibly light drums provide up to 224 pounds of weight savings compared to a typical fullcast drum equipped 18-wheel tractor/trailer!



Genuine CentriFuse® the *original* lightweight steel jacketed brake drum. Renowned and trusted for its light weight, superior safety, exceptional balance, low cost of operation, and **PROVEN** performance, it is no wonder fleets have trusted Genuine Centrifuse for so many years!



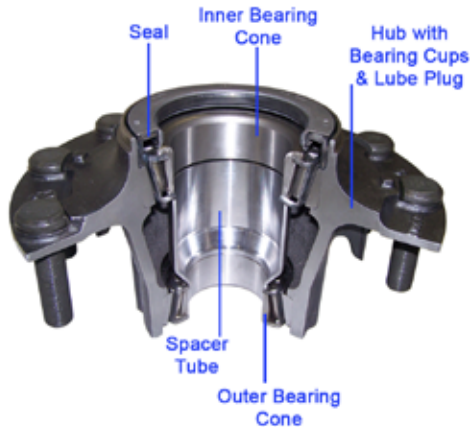
CentruCast® full cast brake drums are ideal for applications where weight is not a critical factor. CentruCast drums are an excellent choice providing economical performance and uniformity.

CentriSet[®] Hub Systems

N & P Spindle Trailer Applications

Axle Application	Wheel Type	ABS	CentriSet Assembly Hub / Bearings / Spacer / Seal	Hub Cap - Oil Lube	Hub Cap - Grease Lube
N (tapered spindle)	Steel	No	410066	520016	520017
N (tapered spindle)	Steel	Yes	450066	520016	520017
N (tapered spindle)	Aluminum	No	410067	520016	520017
N (tapered spindle)	Aluminum	Yes	450067	520016	520017
P (parallel spindle)	Steel	No	410068	520018	520019
P (parallel spindle)	Steel	Yes	450068	520018	520019
P (parallel spindle)	Aluminum	No	410069	520018	520019
P (parallel spindle)	Aluminum	Yes	450069	520018	520019

**CentriSet[®] Hub System is a Pre-Adjusted
Low Maintenance, Low Weight, & Low Cost
Premium Long-Life Wheel-End System**



CentriSet[®] provides:

- A high quality, lightweight ductile iron hub that offers higher strength and increased resistance to damage than aluminum hubs, at an economical cost
- Premium bearing components and an advanced high-performance seal to ensure low maintenance operation, helping to reduce maintenance costs
- Easy installation due to built-in bearing settings, no installation adjustment is required
- 5 Year / 500,000 mile warranty

Get more for less with CentriSet[®] ...
More reliability with less maintenance, less weight, and less cost!

MOTOR WHEEL[®]
COMMERCIAL VEHICLE SYSTEMS

www.motorwheelcvs.com
888-909-4335

Brake Drums

CentriFuse[®]
Hub & Drum Assemblies

CentruCast[™]
Hub & Drum Assemblies

Fasteners

CentriFuse Hub & Drum Assemblies

Hub Piloted System: 8 Hole, 275mm Bolt Circle (CLN)

Item #	Hub & Drum Part Number	Brake Size	Hub Material	Wheel Usage	ABS Loc.	Foot Notes	Weight	Drum Part #	Hub and Bolt	Wheel Bolt	Drive Studs
FF - Front Axle											
BEARINGS:		Inner/Outer Cups: HM212011/3720				Cones: HM212047 or 49/3782			Seal O.D.: 4.84		
AXLE/APPLICATION:		Eaton - EFA-12F4, EFA-13FS Spicer - I100S, I120S, I140S				Meritor - FF941, FF942, FF943, FF961, FG941 Westport - F3W1200, F3W1400, F6W1200, F6W1400					
1	91420BK	15 x 4	Iron	S	1.53		122	88870BK	91419	91100	
2	90587BK	15 x 4	Iron	A	1.53		122	88870BK	90578	88836	
3	240008	15 x 4	Alum	S	1.53		103	88870BK	107578	107477	
4	240009	15 x 4	Alum	A	1.53		103	88870BK	107579	107479	
5	91421B	16.5 x 5	Iron	S	1.53		135	88814B	91419	91100	
6	90579B	16.5 x 5	Iron	A	1.53		135	88814B	90578	88836	
7	240010	16.5 x 5	Alum	S	1.53		116	88814B	107578	107477	
8	240011	16.5 x 5	Alum	A	1.53		116	88814B	107579	107479	
R - Drive Axle											
BEARINGS:		Inner/Outer Cups: 592A / 572				Cones: 598A or 594A / 580			Seal O.D.: 6.31		
AXLE/APPLICATION:		Eaton - 21, 22, 23, 26, 402, 451, 461, 521 Meritor - Q, R & S Series				Spicer - 220, 230, 400, 460					
9	340005	15 x 8.62	Alum	A	2.33	V	131	91438B	104980	102292	(8) - 5/8
10	300012	16.5 x 7	Alum	A		L	133	88797B	105211	102292	(8) - 5/8
11	340012	16.5 x 7	Alum	A	2.33	L	133	88797B	105214	102292	(8) - 5/8
12	91116B	16.5 x 7	Iron	S		L	157	88797B	91115	88836	(8) - 5/8
13	91120B	16.5 x 7	Iron	S	2.33	L	158	88797B	91119	88836	(8) - 5/8
14	91310B	16.5 x 7	Iron	S			157	88797B	91121	88836	(8) - 5/8
15	91318B	16.5 x 7	Iron	S	2.33		158	88797B	91317	88836	(8) - 5/8
16	91311B	16.5 x 7	Iron	A			158	88797B	91122	89620	(8) - 5/8
17	91320B	16.5 x 7	Iron	A	2.33		159	88797B	91319	89620	(8) - 5/8
18	91322B	16.5 x 7	Iron	A		L	158	88797B	91321	89620	(8) - 5/8
19	91316B	16.5 x 7	Iron	A	2.33	L	159	88797B	91315	89620	(8) - 5/8

Notes:

L = Lube fill: 1/4-18 NPTF – Iron Hubs, 9/16-18 O-ring Seal – Alum. Hubs
V = For industry axles except Meritor TN or TB

For general notes, see page 2.

Brake Drums

CentriFuse®
Hub & Drum Assemblies

CentruCast™
Hub & Drum Assemblies

Fasteners

CentriFuse Hub & Drum Assemblies

Hub Piloted System: 8 Hole, 257mm Bolt Circle (CLN)

Item #	Hub & Drum Part Number	Brake Size	Hub Material	Wheel Usage	ABS Loc.	Foot Notes	Weight	Drum Part #	Hub and Bolt	Wheel Bolt	Drive Studs
N - Trailer Axle											
BEARINGS:		Inner/Outer Cups: HM218210/HM212011				Cones: HM218248/HM212049			Seal O.D.: 6.00		
AXLE/APPLICATION:		Dexter-D225K			Ingersoll-A22,F22			Meritor-TN, RQ, TQ, TQD, TNC			
		Eaton-ETA225J, EST230J			KB-KBW			Spicer-D22,K22			
1	89424B	16.5 x 7	Iron	S			136	88797B	89425	88836	
2	90895B	16.5 x 7	Iron	S	2.34		136	88797B	90894	88836	
3	90609B	16.5 x 7	Iron	A			137	88797B	90607	88799	
4	90893B	16.5 x 7	Iron	A	2.34		137	88797B	90892	88799	
5	91370B	16.5 x 7	Alum	S			120	88797B	91372	102188	
6	91376B	16.5 x 7	Alum	S	2.34		120	88797B	91378	102188	
7	91373B	16.5 x 7	Alum	A			121	88797B	91375	102189	
8	91379B	16.5 x 7	Alum	A	2.34		121	88797B	91381	102189	
9	89567B	16.5 x 8.62	Iron	S		U	152	89571B	89425	88836	
10	440031	16.5 x 8.62	Iron	S	2.34	U	153	89571B	90894	88836	
11	90610B	16.5 x 8.62	Iron	A		U	153	89571B	90607	88799	
12	91371B	16.5 x 8.62	Alum	S		U	136	89571B	91372	102188	
13	91377B	16.5 x 8.62	Alum	S	2.34	U	136	89571B	91378	102188	
14	91374B	16.5 x 8.62	Alum	A		U	137	89571B	91375	102189	
15	91380B	16.5 x 8.62	Alum	A	2.34	U	137	89571B	91381	102189	
P - Trailer Axle											
BEARINGS:		Inner/Outer Cups: HM518410 / HM518410				Cones: HM518445 / HM518445			Seal O.D.: 6.00		
AXLE/APPLICATION:		Eaton - EST225P, EST230P			Ingersoll-A24,F24			Spicer - P22			
		Fruehauf - PROPAR			Meritor - TP						
16	91806B	15 x 8.62	Alum	A		V	125	91438B	89850	102190	
17	91807B	15 x 8.62	Alum	A	2.2	V	125	91438B	91638	102190	
18	89404B	16.5 x 7	Iron	S			146	88797B	89403	88836	
19	91510B	16.5 x 7	Iron	S	2.2		147	88797B	91509	88836	
20	90611B	16.5 x 7	Iron	A			148	88797B	90608	88799	
21	91513B	16.5 x 7	Iron	A	2.2		147	88797B	91512	88799	
22	89985B	16.5 x 7	Alum	S			127	88797B	89984	102188	
23	91639B	16.5 x 7	Alum	S	2.2		125	88797B	91637	102188	
24	89867B	16.5 x 7	Alum	A			128	88797B	89850	102190	
25	91640B	16.5 x 7	Alum	A	2.2		126	88797B	91638	102190	
26	89632B	16.5 x 8.62	Iron	S		U	159	89571B	89403	88836	
27	91511B	16.5 x 8.62	Iron	S	2.2	U	160	89571B	91509	88836	
28	90612B	16.5 x 8.62	Iron	A		U	161	89571B	90608	88799	
29	91514B	16.5 x 8.62	Iron	A	2.2	U	163	89571B	91512	88799	
30	89868B	16.5 x 8.62	Alum	A		U	144	89571B	89850	102190	

Notes:

U = For axles with 8.62" linings located inboard of the 7" brake location
V = For industry axles except Meritor TN or TB

For general notes, see page 2.

Brake Drums

CentriFuse®
Hub & Drum Assemblies

CentruCast™
Hub & Drum Assemblies

Fasteners

CentriFuse Hub & Drum Assemblies

Hub Piloted System: 10 Hole, 285.75mm Bolt Circle (CLN)

Item #	Hub & Drum Part Number	Brake Size	Hub Material	Wheel Usage	ABS Loc.	Foot Notes	Weight	Drum Part #	Hub and Bolt	Wheel Bolt	Drive Studs
FF - Front Axle											
BEARINGS:		Inner/Outer Cups: HM212011/3720				Cones: HM212047 or 49/3782			Seal O.D.: 4.84		
AXLE/APPLICATION:		Eaton - EFA-12F4, EFA-13FS Spicer - I100S, I120S, I140S				Meritor - FF941, FF942, FF943, FF961, FG941 Westport - F3W1200, F3W1400, F6W1200, F6W1400					
1	91130BK	15 x 4	Iron	A	1.53		117	89870BK	91129	90427	
2	91570BK	15 x 4	Alum	S	1.53		102	89870BK	91550	102033	
3	91572BK	15 x 4	Alum	A	1.53		103	89870BK	91551	102290	
4	91810B	15 x 5	Iron	A	1.53		127	90174B	91129	90427	
5	91811B	16.5 x 5	Iron	A	1.53		129	90600B	91129	90427	
6	91571B	16.5 x 5	Alum	S	1.53		115	90600B	91550	102033	
7	91573B	16.5 x 5	Alum	A	1.53		116	90600B	91551	102290	
R - Drive Axle											
BEARINGS:		Inner/Outer Cups: 592A / 572				Cones: 598A or 594A / 580			Seal O.D.: 6.31		
AXLE/APPLICATION:		Eaton - 21, 22, 23, 26, 402, 451, 461, 521 Meritor - Q, R & S Series				Spicer - 220, 230, 400, 460					
8	340002	15 x 8.62	Iron	S	2.33	V	156	91482B	4219203	3018503	(8) - 5/8
9	340003	15 x 8.62	Iron	A	2.33	V	157	91482B	4218725	3018501	(8) - 5/8
10	340004	15 x 8.62	Alum	A	2.33	V	135	91482B	104970	102292	(8) - 5/8
11	90883B	16.5 x 7	Iron	S			154	89996B	2218724	3018503	(8) - 5/8
12	91407B	16.5 x 7	Iron	S	2.33		156	89996B	4219203	3018503	(8) - 5/8
13	90322B	16.5 x 7	Iron	A			155	89996B	2218725	3018501	(8) - 5/8
14	91400B	16.5 x 7	Iron	A	2.33		160	89996B	4218725	3018501	(8) - 5/8
15	91647B	16.5 x 7	Alum	S	2.33		132	89996B	91646	91165	(8) - 5/8
16	91649B	16.5 x 7	Alum	A	2.33		133	89996B	91648	91163	(8) - 5/8
17	340015	16.5 x 7	Iron	S	2.33	L	162	89996B	350005	3018503	(8) - 5/8
18	90884B	16.5 x 8.62	Iron	S		U	171	90434B	2218724	3018503	(8) - 5/8
19	91408B	16.5 x 8.62	Iron	S	2.33	U	171	90434B	4219203	3018503	(8) - 5/8
20	90440B	16.5 x 8.62	Iron	A		U	173	90434B	2218725	3018501	(8) - 5/8
21	91399B	16.5 x 8.62	Iron	A	2.33	U	173	90434B	4218725	3018501	(8) - 5/8
R-Short - Drive Axle											
BEARINGS:		Inner/Outer Cups: 592A / 572				Cones: 598A or 594A / 580			Seal O.D.: 6.31		
AXLE/APPLICATION:		Eaton - 21, 22, 23, 26, 402, 451, 461, 521 Meritor - Q, R & S Series				Spicer - 220, 230, 400, 460					
22	340006	15 x 8.62	Iron	S	2.33	V	154	91482B	4219204	3018503	(8) - 3/4
23	2209401	16.5 x 7	Iron	S			151	89996B	2218718	3018503	(8) - 5/8
24	91802B	16.5 x 7	Iron	S	2.33		156	89996B	4219201	3018503	(8) - 5/8
25	2209306	16.5 x 7	Iron	A			152	89996B	2218812	3018501	(8) - 5/8

Brake Drums

CentriFuse®
Hub & Drum Assemblies

CentruCast™
Hub & Drum Assemblies

Fasteners

CentriFuse Hub & Drum Assemblies

Hub Piloted System: 10 Hole, 285.75mm Bolt Circle (CLN)

Item #	Hub & Drum Part Number	Brake Size	Hub Material	Wheel Usage	ABS Loc.	Foot Notes	Weight	Drum Part #	Hub and Bolt	Wheel Bolt	Drive Studs
N - Trailer Axle											
BEARINGS:		Inner/Outer Cups: HM218210/HM212011				Cones: HM218248/HM212049			Seal O.D.: 6.00		
AXLE/APPLICATION:		Dexter-D225K Eaton-ETA225J, EST230J			Ingersoll-A22,F22 KB-KBW			Meritor-TN, RQ, TQ,TQD,TNC Spicer-D22,K22			
1	400135	15 X 8.62	Lite Iron	S		V	128	91482B	410052	500006	
2	440135	15 X 8.62	Lite Iron	S	2.34	V	129	91482B	450052	500006	
3	91687B	15 X 8.62	Alum	A		L, V	124	91482B	105774	102190	
4	91688B	15 X 8.62	Alum	A	2.34	L, V	124	91482B	105782	102190	
5	91756B	15 X 8.62	Alum	S		L, W	124	91725B	105773	102188	
6	91757B	15 X 8.62	Alum	S	2.34	L, W	124	91725B	105781	102188	
7	91758B	15 X 8.62	Alum	A		L, W	124	91725B	105774	102190	
8	91759B	15 X 8.62	Alum	A	2.34	L, W	124	91725B	105782	102190	
9	400119	16.5 X 7	Lite Iron	S			122	600084	410052	500006	
10	440119	16.5 X 7	Lite Iron	S	2.34		123	600084	450052	500006	
11	400120	16.5 X 7	Lite Iron	A			123	600084	410053	500007	
12	440120	16.5 X 7	Lite Iron	A	2.34		124	600084	450053	500007	
13	400121	16.5 X 7	Lite Iron	S			128	89996B	410052	500006	
14	440121	16.5 X 7	Lite Iron	S	2.34		129	89996B	450052	500006	
15	400122	16.5 X 7	Lite Iron	A			129	89996B	410053	500007	
16	440122	16.5 X 7	Lite Iron	A	2.34		130	89996B	450053	500007	
17	400084	16.5 X 7	Alum	S		L	117	600084	105773	102188	
18	440084	16.5 X 7	Alum	S	2.34	L	118	600084	105781	102188	
19	400085	16.5 X 7	Alum	A		L	118	600084	105774	102190	
20	440085	16.5 X 7	Alum	A	2.34	L	119	600084	105782	102190	
21	91179B	16.5 X 7	Alum	S		L	122	89996B	105773	102188	
22	91183B	16.5 X 7	Alum	S	2.34	L	123	89996B	105781	102188	
23	91177B	16.5 X 7	Alum	A		L	123	89996B	105774	102190	
24	91181B	16.5 X 7	Alum	A	2.34	L	123	89996B	105782	102190	
25	400002	16.5 X 8	Alum	S		L	128	91792B	105773	102188	
26	440002	16.5 X 8	Alum	S	2.34	L	128	91792B	105781	102188	
27	400003	16.5 X 8	Alum	A		L	129	91792B	105774	102190	
28	440003	16.5 X 8	Alum	A	2.34	L	129	91792B	105782	102190	
29	400131	16.5 X 8.62	Lite Iron	S		T	138	91812B	410052	500006	
30	440131	16.5 X 8.62	Lite Iron	S	2.34	T	139	91812B	450052	500006	
31	400132	16.5 X 8.62	Lite Iron	A		T	139	91812B	410053	500007	
32	440132	16.5 X 8.62	Lite Iron	A	2.34	T	140	91812B	450053	500007	
33	400133	16.5 X 8.62	Lite Iron	S		U	136	90486B	410052	500006	
34	440133	16.5 X 8.62	Lite Iron	S	2.34	U	137	90486B	450052	500006	
35	400134	16.5 X 8.62	Lite Iron	A		U	137	90486B	410053	500007	
36	440134	16.5 X 8.62	Lite Iron	A	2.34	U	138	90486B	450053	500007	
37	91257B	16.5 X 8.62	Alum	S		L, U	130	90486B	105773	102188	
38	91259B	16.5 X 8.62	Alum	S	2.34	L, U	131	90486B	105781	102188	
39	91256B	16.5 X 8.62	Alum	A		L, U	131	90486B	105774	102190	
40	91258B	16.5 X 8.62	Alum	A	2.34	L, U	132	90486B	105782	102190	
41	400025	16.5 X 8.62	Alum	S		L, T	132	91812B	105773	102188	
42	440025	16.5 X 8.62	Alum	S	2.34	L, T	132	91812B	105781	102188	
43	400026	16.5 X 8.62	Alum	A		L, T	134	91812B	105774	102190	
44	440026	16.5 X 8.62	Alum	A	2.34	L, T	134	91812B	105782	102190	

Notes:

- L = Lube fill: 1/4-18 NPTF – Iron Hubs, 9/16-18 O-ring Seal – Alum. Hubs
- T = For axles with 8.62" linings located at the 7" brake location
- U = For axles with 8.62" linings located inboard of the 7" brake location
- V = For industry axles except Meritor TN or TB
- W = For Meritor TN or TB axles only

For general notes, see page 2.

Brake Drums

CentriFuse®
Hub & Drum Assemblies

CentruCast™
Hub & Drum Assemblies

Fasteners

CentriFuse Hub & Drum Assemblies

Hub Piloted System: 10 Hole, 285.75mm Bolt Circle (CLN)

Item #	Hub & Drum Part Number	Brake Size	Hub Material	Wheel Usage	ABS Loc.	Foot Notes	Weight	Drum Part #	Hub and Bolt	Wheel Bolt	Drive Studs
P - Trailer Axle											
BEARINGS:		Inner/Outer Cups: HM518410 / HM518410			Cones: HM518445 / HM518445			Seal O.D.: 6.00			
AXLE/APPLICATION:		Eaton - EST225P, EST230P Fruehauf - PROPAR			Ingersoll-A24,F24 Meritor - TP			Spicer - P22			
1	400113	16.5 X 7	Lite Iron	S			130	89996B	410050	500006	
2	440113	16.5 X 7	Lite Iron	S	2.2		131	89996B	450050	500006	
3	400114	16.5 X 7	Lite Iron	A			131	89996B	410051	500007	
4	440114	16.5 X 7	Lite Iron	A	2.2		132	89996B	450051	500007	
5	400115	16.5 X 7	Lite Iron	S			124	600084	410050	500006	
6	440115	16.5 X 7	Lite Iron	S	2.2		125	600084	450050	500006	
7	400116	16.5 X 7	Lite Iron	A			125	600084	410051	500007	
8	440116	16.5 X 7	Lite Iron	A	2.2		126	600084	450051	500007	
9	400012	16.5 X 7	Alum	S		L	129	89996B	10001181	102290	
10	440012	16.5 X 7	Alum	S	2.2	L	129	89996B	10001190	102290	
11	400013	16.5 X 7	Alum	A		L	130	89996B	10001183	102292	
12	440013	16.5 X 7	Alum	A	2.2	L	130	89996B	10001192	102292	
13	400006	16.5 X 8	Alum	S		L	134	91792B	10001181	102290	
14	440006	16.5 X 8	Alum	S	2.2	L	134	91792B	10001190	102290	
15	400007	16.5 X 8	Alum	A		L	135	91792B	10001183	102292	
16	440007	16.5 X 8	Alum	A	2.2	L	135	91792B	10001192	102292	
17	400138	16.5 X 8.62	Lite Iron	S		U	138	90486B	410050	500006	
18	440138	16.5 X 8.62	Lite Iron	S	2.2	U	139	90486B	450050	500006	
19	400139	16.5 X 8.62	Lite Iron	A		U	139	90486B	410051	500007	
20	440139	16.5 X 8.62	Lite Iron	A	2.2	U	140	90486B	450051	500007	
21	400136	16.5 X 8.62	Lite Iron	S		T	140	91812B	410050	500006	
22	440136	16.5 X 8.62	Lite Iron	S	2.2	T	141	91812B	450050	500006	
23	400137	16.5 X 8.62	Lite Iron	A		T	141	91812B	410051	500007	
24	440137	16.5 X 8.62	Lite Iron	A	2.2	T	142	91812B	450051	500007	
25	400029	16.5 X 8.62	Alum	S		L, T	141	91812B	10001181	102290	
26	440029	16.5 X 8.62	Alum	S	2.2	L, T	141	91812B	10001190	102290	
27	400030	16.5 X 8.62	Alum	A		L, T	142	91812B	10001183	102292	
28	440030	16.5 X 8.62	Alum	A	2.2	L, T	142	91812B	10001192	102292	

Notes:

L = Lube fill: 1/4-18 NPTF – Iron Hubs, 9/16-18 O-ring Seal – Alum. Hubs
 T = For axles with 8.62" linings located at the 7" brake location
 U = For axles with 8.62" linings located inboard of the 7" brake location

For general notes, see page 2.

Brake Drums

CentriFuse®
Hub & Drum Assemblies

CentruCast™
Hub & Drum Assemblies

Fasteners

CentriFuse Hub & Drum Assemblies

Stud Piloted System: 10 Hoke, 11 1/4" Bolt Circle (DCN)

Item #	Hub & Drum Part Number	R or L Hand	Brake Size	Hub Material	Wheel Usage	ABS Loc.	Foot Notes	Weight	Drum Part #	Hub and Bolt	Wheel Bolt	Drive Studs
FF - Front Axle												
BEARINGS:			Inner/Outer Cups: HM212011/3720				Cones: HM212047 or 49/3782			Seal O.D.: 4.84		
AXLE/APPLICATION:			Eaton - EFA-12F4, EFA-13FS Spicer - I100S, I120S, I140S				Meritor - FF941, FF942, FF943, FF961, FG941 Westport - F3W1200, F3W1400, F6W1200, F6W1400					
1	90431BK	R	15 X 4	Iron	A, S			115	89870BK	90428	90575	
2	90432BK	L	15 X 4	Iron	A, S			115	89870BK	90429	90576	
3	240002	R	15 X 5	Iron	A, S	1.53		131	90174B	250000	90575	
4	240003	L	15 X 5	Iron	A, S	1.53		131	90174B	250001	90576	
5	90604B	R	16.5 X 5	Iron	A, S			132	90600B	90428	90575	
6	90605B	L	16.5 X 5	Iron	A, S			132	90600B	90429	90576	
R - Drive Axle												
BEARINGS:			Inner/Outer Cups: 592A / 572				Cones: 598A or 594A / 580			Seal O.D.: 6.31		
AXLE/APPLICATION:			Eaton - 21, 22, 23, 26, 402, 451, 461, 521 Meritor - Q, R & S Series				Spicer - 220, 230, 400, 460					
7	90320B	R	16.5 X 7	Iron	A, S			157	89996B	2218726	3008401	(8) - 5/8
8	90321B	L	16.5 X 7	Iron	A, S			157	89996B	2218727	3008402	(8) - 5/8
9	91397B	R	16.5 X 7	Iron	A, S	2.33		157	89996B	4218726	3008401	(8) - 5/8
10	91398B	L	16.5 X 7	Iron	A, S	2.33		157	89996B	4218727	3008402	(8) - 5/8
11	90438B	R	16.5 X 8.62	Iron	A, S		U	171	90434B	2218726	3008401	(8) - 5/8
12	90439B	L	16.5 X 8.62	Iron	A, S		U	171	90434B	2218727	3008402	(8) - 5/8
13	91403B	R	16.5 X 8.62	Iron	A, S	2.33	U	171	90434B	4218726	3008401	(8) - 5/8
14	91404B	L	16.5 X 8.62	Iron	A, S	2.33	U	171	90434B	4218727	3008402	(8) - 5/8
R-Short - Drive Axle												
BEARINGS:			Inner/Outer Cups: 592A / 572				Cones: 598A or 594A / 580			Seal O.D.: 6.31		
AXLE/APPLICATION:			Eaton - 21, 22, 23, 26, 402, 451, 461, 521 Meritor - Q, R & S Series				Spicer - 220, 230, 400, 460					
15	340000	R	16.5 X 8	Iron	A, S	2.33		154	91792B	4219307	3008401	(8) - 5/8
16	340001	L	16.5 x 8	Iron	A, S	2.33		154	91792B	4219308	3008402	(8) - 5/8

Notes:

U = For axles with 8.62" linings located inboard of the 7" brake location

For general notes, see page 2.

Brake Drums

CentriFuse®
Hub & Drum Assemblies

CentruCast™
Hub & Drum Assemblies

Fasteners

CentriFuse Hub & Drum Assemblies

Stud Piloted System: 10 Hole, 11 1/4" Bolt Circle (DCN)

Item #	Hub & Drum Part Number	R or L Hand	Brake Size	Hub Material	Wheel Usage	ABS Loc.	Foot Notes	Weight	Drum Part #	Hub and Bolt	Wheel Bolt	
N - Trailer Axle												
BEARINGS:			Inner/Outer Cups: HM218210/HM212011				Cones: HM218248/HM212049			Seal O.D.: 6.00		
AXLE/APPLICATION:			Dexter-D225K		Ingersoll-A22,F22		Meritor-TN, RQ, TQ, TQD, TNC					
			Eaton-ETA225J, EST230J		KB-KBW		Spicer-D22,K22					
1	400051	R	16.5 X 7	Iron	A, S			135	89996B	2819003	3008401	
2	400052	L	16.5 X 7	Iron	A, S			135	89996B	2819004	3008402	
3	440051	R	16.5 X 7	Iron	A, S	2.34		136	89996B	4819003	3008401	
4	440052	L	16.5 X 7	Iron	A, S	2.34		136	89996B	4819004	3008402	
5	400063	R	16.5 X 7	Alum	A, S		L	123	89996B	105728	102192	
6	400064	L	16.5 X 7	Alum	A, S		L	123	89996B	105727	102191	
7	440063	R	16.5 X 7	Alum	A, S	2.34	L	123	89996B	105748	102192	
8	440064	L	16.5 X 7	Alum	A, S	2.34	L	123	89996B	105747	102191	
9	400065	R	16.5 X 8.62	Alum	A, S		L, U	131	90486B	105728	102192	
10	400066	L	16.5 X 8.62	Alum	A, S		L, U	131	90486B	105727	102191	
11	440065	R	16.5 X 8.62	Alum	A, S	2.34	L, U	131	90486B	105748	102192	
12	440066	L	16.5 X 8.62	Alum	A, S	2.34	L, U	131	90486B	105747	102191	
P - Trailer Axle												
BEARINGS:			Inner/Outer Cups: HM518410 / HM518410				Cones: HM518445 / HM518445			Seal O.D.: 6.00		
AXLE/APPLICATION:			Eaton - EST225P, EST230P		Ingersoll-A24,F24		Spicer - P22					
			Fruehauf - PROPAR		Meritor - TP							
13	400034	R	16.5 X 7	Iron	A, S			142	89996B	2819303	3008401	
14	400035	L	16.5 X 7	Iron	A, S			142	89996B	2819304	3008402	
15	440034	R	16.5 X 7	Iron	A, S	2.2		142	89996B	4819303	3008401	
16	440035	L	16.5 X 7	Iron	A, S	2.2		142	89996B	4819304	3008402	

Notes:

L = Lube fill: 1/4-18 NPTF – Iron Hubs, 9/16-18 O-ring Seal – Alum. Hubs
 U = For axles with 8.62" linings located inboard of the 7" brake location

For general notes, see page 2.

Brake Drums

CentriFuse®
Hub & Drum Assemblies

CentruCast™
Hub & Drum Assemblies

Fasteners

Full Cast Hub & Drum Assemblies

Hub Piloted System: 8 Hole, 275mm Bolt Circle (CLN)

Item #	Hub & Drum Part Number	Brake Size	Hub Material	Wheel Usage	ABS Loc.	Foot Notes	Weight	Drum Part #	Hub and Bolt	Wheel Bolt	Drive Studs
FF - Front Axle											
BEARINGS:		Inner/Outer Cups: HM212011/3720				Cones: HM212047 or 49/3782			Seal O.D.: 4.84		
AXLE/APPLICATION:		Eaton - EFA-12F4, EFA-13FS Spicer - I100S, I120S, I140S				Meritor - FF941, FF942, FF943, FF961, FG941 Westport - F3W1200, F3W1400, F6W1200, F6W1400					
1	240014	15 x 4	Iron	S	1.53		133	630004	90578	88836	
R - Drive Axle											
BEARINGS:		Inner/Outer Cups: 592A / 572				Cones: 598A or 594A / 580			Seal O.D.: 6.31		
AXLE/APPLICATION:		Eaton - 21, 22, 23, 26, 402, 451, 461, 521 Meritor - Q, R & S Series				Spicer - 220, 230, 400, 460					
2	340014	16.5 x 7	Iron	S	2.33	L	181	630003	350004	88799	(8) - 5/8
N - Trailer Axle											
BEARINGS:		Inner/Outer Cups: HM218210/HM212011				Cones: HM218248/HM212049			Seal O.D.: 6.00		
AXLE/APPLICATION:		Dexter-D225K Eaton-ETA225J, EST230J				Ingersoll-A22,F22 KB-KBW			Meritor-TN, RQ, TQ, TQD, TNC Spicer-D22, K22		
3	400038	12.25 x 7.50	Iron	S		Y	133	630002	410002	3018503	
4	440038	12.25 x 7.50	Iron	S	2.34	Y, Z	134	630002	450002	3018503	
5	400067	12.25 x 7.50	Iron	A		Y	134	630002	410011	3018501	
6	440067	12.25 x 7.50	Iron	A	2.34	Y, Z	135	630002	450011	3018501	
7	400068	16.5 x 7	Iron	S			162	630003	90607	88799	
8	440068	16.5 x 7	Iron	S	2.34		162	630003	90892	88799	
P - Trailer Axle											
BEARINGS:		Inner/Outer Cups: HM518410/HM518410				Cones: HM518445/HM518445			Seal O.D.: 6.00		
AXLE/APPLICATION:		Eaton-EST225P, EST230P Fruehauf-PROPAR				Ingersoll-A24, F24 Meritor-TP			Spicer-P22		
9	400107	12.25 x 7.50	Iron	S		Y	143	630002	413020	3018503	
10	440107	12.25 x 7.50	Iron	S	2.2	Y, Z	144	630002	453020	3018503	
11	400108	12.25 x 7.50	Iron	A		Y	144	630002	413021	3018501	
12	440108	12.25 x 7.50	Iron	A	2.2	Y, Z	145	630002	453021	3018501	

Notes:

L = Lube fill: 1/4-18 NPTF – Iron Hubs, 9/16-18 O-ring Seal – Alum. Hubs
 Y = Assembly includes an unbalanced drum
 Z = 80-tooth ABS rings for use with tire diameters 15" and 17.5"

For general notes, see page 2.

Brake Drums

CentriFuse®
Hub & Drum Assemblies

CentruCast™
Hub & Drum Assemblies

Fasteners

Full Cast Hub & Drum Assemblies

Hub Piloted System: 10 Hole, 285.75mm Bolt Circle (CLN)

Item #	Hub & Drum Part Number	Brake Size	Hub Material	Wheel Usage	ABS Loc.	Foot Notes	Weight	Drum Part #	Hub and Bolt	Wheel Bolt	Drive Studs
FF - Front Axle											
BEARINGS:		Inner/Outer Cups: HM212011/3720				Cones: HM212047 or 49/3782			Seal O.D.: 4.84		
AXLE/APPLICATION:		Eaton - EFA-12F4, EFA-13FS Spicer - I100S, I120S, I140S				Meritor - FF941, FF942, FF943, FF961, FG941 Westport - F3W1200, F3W1400, F6W1200, F6W1400					
1	240015	15 x 4	Iron	S	1.53	Q	128	630001	250012	3018502	
2	240016	15 x 4	Iron	A	1.53	Q	129	630001	250013	3018503	
3	4008401	15 x 4	Iron	S	1.53	M	122	2308401	4018401	3018502	
4	4008402	15 x 4	Iron	A	1.53	M	123	2308401	4018402	3018503	
5	4008405	16.5 x 5	Iron	S	1.53	M	139	2308406	4018401	3018502	
6	4008406	16.5 x 5	Iron	A	1.53	M	140	2308406	4018402	3018503	
R - Drive Axle											
BEARINGS:		Inner/Outer Cups: 592A / 572				Cones: 598A or 594A / 580			Seal O.D.: 6.31		
AXLE/APPLICATION:		Eaton - 21, 22, 23, 26, 402, 451, 461, 521 Meritor - Q, R & S Series				Spicer - 220, 230, 400, 460					
7	2208753	16.5 x 7	Iron	S			176	2308709	2218724	3018503	(8) - 5/8
8	4208753	16.5 x 7	Iron	S	2.33		178	2308709	4219203	3018503	(8) - 5/8
9	2208754	16.5 x 7	Iron	A			177	2308709	2218725	3018501	(8) - 5/8
10	4208754	16.5 x 7	Iron	A	2.33		179	2308709	4218725	3018501	(8) - 5/8
R-Short - Drive Axle											
BEARINGS:		Inner/Outer Cups: 592A / 572				Cones: 598A or 594A / 580			Seal O.D.: 6.31		
AXLE/APPLICATION:		Eaton - 21, 22, 23, 26, 402, 451, 461, 521 Meritor - Q, R & S Series				Spicer - 220, 230, 400, 460					
11	2208738	16.5 x 7	Iron	S			173	2308709	2218718	3018503	(8) - 5/8
12	4208738	16.5 x 7	Iron	S	2.33		174	2308709	4219201	3018503	(8) - 5/8
13	2208813	16.5 x 7	Iron	A			174	2308709	2218812	3018501	(8) - 5/8
14	4208813	16.5 x 7	Iron	A	2.33		175	2308709	4219301	3018501	(8) - 5/8
15	2208752	16.5 x 7	Iron	S			175	2308709	2218805	3018503	(8) - 3/4
16	4208752	16.5 x 7	Iron	S	2.33		176	2308709	4219204	3018503	(8) - 3/4
17	2209302	16.5 x 7	Iron	A			176	2308709	2219302	3018501	(8) - 3/4
18	4209302	16.5 x 7	Iron	A	2.33		177	2308709	4219302	3018501	(8) - 3/4

Notes:
M = 5.19 offset
Q = 5.44 offset

For general notes, see page 2.

Brake Drums

CentriFuse®
Hub & Drum Assemblies

CentruCast™
Hub & Drum Assemblies

Fasteners

Full Cast Hub & Drum Assemblies

Hub Piloted System: 10 Hole, 285.75mm Bolt Circle (CLN)

Brake Drums

CentriFuse®
Hub & Drum Assemblies

CentruCast™
Hub & Drum Assemblies

Fasteners

Item #	Hub & Drum Part Number	Brake Size	Hub Material	Wheel Usage	ABS Loc.	Foot Notes	Weight	Drum Part #	Hub and Bolt	Wheel Bolt	
N - Trailer Axle											
BEARINGS:		Inner/Outer Cups: HM218210/HM212011				Cones: HM218248/HM212049			Seal O.D.: 6.00		
AXLE/APPLICATION:		Dexter-D225K Eaton-ETA225J, EST230J			Ingersoll-A22,F22 KB-KBW			Meritor-TN, RQ, TQ,TQD,TNC Spicer-D22,K22			
1	400117	16.5 x 7	Lite Iron	Steel		Y	150	2308712	410052	500006	
2	440117	16.5 x 7	Lite Iron	Steel	2.34	Y	151	2308712	450052	500006	
3	400118	16.5 x 7	Lite Iron	Alum		Y	151	2308712	410053	500007	
4	440118	16.5 x 7	Lite Iron	Alum	2.34	Y	152	2308712	450053	500007	
5	400015	16.5 x 7	Alum	Steel		Y	145	2308712	105773	102188	
6	440015	16.5 x 7	Alum	Steel	2.34	Y	145	2308712	105781	102188	
7	400016	16.5 x 7	Alum	Alum		Y	146	2308712	105774	102190	
8	440016	16.5 x 7	Alum	Alum	2.34	Y	146	2308712	105782	102190	
9	403046	16.5 x 8.62	Lite Iron	Steel		T, Y	163	630000A	410052	500006	
10	443046	16.5 x 8.62	Lite Iron	Steel	2.34	T, Y	164	630000A	450052	500006	
11	403047	16.5 x 8.62	Lite Iron	Alum		T, Y	164	630000A	410053	500007	
12	443047	16.5 x 8.62	Lite Iron	Alum	2.34	T, Y	165	630000A	450053	500007	
13	403048	16.5 x 8.62	Lite Iron	Steel		U, Y	163	630006A	410052	500006	
14	403049	16.5 x 8.62	Lite Iron	Alum		U, Y	164	630006A	410053	500007	
15	443048	16.5 x 8.62	Lite Iron	Steel	2.34	U, Y	164	630006A	450052	500006	
16	443049	16.5 x 8.62	Lite Iron	Alum	2.34	U, Y	165	630006A	450053	500007	
P - Trailer Axle											
BEARINGS:		Inner/Outer Cups: HM518410 / HM518410				Cones: HM518445 / HM518445			Seal O.D.: 6.00		
AXLE/APPLICATION:		Eaton - EST225P, EST230P Fruehauf - PROPAR			Ingersoll-A24,F24 Meritor - TP			Spicer - P22			
17	400111	16.5 x 7	Lite Iron	Steel		Y	152	2308712	410050	500006	
18	440111	16.5 x 7	Lite Iron	Steel	2.2	Y	153	2308712	450050	500006	
19	400112	16.5 x 7	Lite Iron	Alum		Y	153	2308712	410051	500007	
20	440112	16.5 x 7	Lite Iron	Alum	2.2	Y	154	2308712	450051	500007	
21	400124	16.5 x 8.62	Lite Iron	Steel		T, Y	168	630000A	410050	500006	
22	440124	16.5 x 8.62	Lite Iron	Steel	2.2	T, Y	169	630000A	450050	500006	
23	400125	16.5 x 8.62	Lite Iron	Alum		T, Y	169	630000A	410051	500007	
24	440125	16.5 x 8.62	Lite Iron	Alum	2.2	T, Y	170	630000A	450051	500007	
25	400123	16.5 x 7	Iron	Steel		Y, *	161	2308712	413007	3018503	
26	440123	16.5 x 7	Iron	Steel	2.2	Y, *	162	2308712	453007	3018503	
27	400090	16.5 X 8.62	Iron	Steel		T, Y, *	165	630000A	413007	3018503	
28	440090	16.5 X 8.62	Iron	Steel	2.2	T, Y, *	165	630000A	453007	3018503	

Notes:
 L = Lube fill: 1/4-18 NPTF – Iron Hubs, 9/16-18 O-ring Seal – Alum. Hubs
 T = For axles with 8.62" linings located at the 7" brake center
 U = For axles with 8.62" linings located inboard of the 7" brake location
 Y = Assembly includes an unbalanced drum
 * = Uses Thread-On Hub Cap

For general notes, see page 2.

Full Cast Hub & Drum Assemblies

Stud Piloted System: 10 Hole, 11 1/4" Bolt Circle (DCN)

Item #	Hub & Drum Part Number	R or L Hand	Brake Size	Hub Material	Wheel Usage	ABS Loc.	Foot Notes	Weight	Drum Part #	Hub and Bolt	Wheel Bolt	Drive Studs
FD - Front Axle												
BEARINGS:			Inner/Outer Cups: 39520/3525				Cones: 39581/3585			Seal O.D.: 4.84		
AXLE/APPLICATION: Meritor - FD931												
1	4009204	R	15 X 4	Iron	A, S	1.12		121	2308401	4019203	3008401	
2	4009205	L	15 X 4	Iron	A, S	1.12		121	2308401	4019204	3008402	
FF - Front Axle												
BEARINGS:			Inner/Outer Cups: HM212011/3720				Cones: HM212047 or 49/3782			Seal O.D.: 4.84		
AXLE/APPLICATION: Eaton - EFA-12F4, EFA-13FS Meritor - FF941, FF942, FF943, FF961, FG941 Spicer - I100S, I120S, I140S Westport - F3W1200, F3W1400, F6W1200, F6W1400												
3	4008509	R	15 X 4	Iron	A, S	1.53	M	120	2308401	4018505	3008401	
4	4008510	L	15 X 4	Iron	A, S	1.53	M	120	2308401	4018506	3008402	
5	4008737	R	15 X 4	Iron	A, S	1.53	M	124	2308401	4018803	3008709	
6	4008738	L	15 X 4	Iron	A, S	1.53	M	124	2308401	4018804	3008710	
7	240017	R	15 X 4	Iron	A, S	1.53	Q	129	630005	250014	3008709	
8	240018	L	15 X 4	Iron	A, S	1.53	Q	129	630005	250015	3008710	
R - Drive Axle												
BEARINGS:			Inner/Outer Cups: 592A / 572				Cones: 598A or 594A / 580			Seal O.D.: 6.31		
AXLE/APPLICATION: Eaton - 21, 22, 23, 26, 402, 451, 461, 521 Meritor - Q, R & S Series Spicer - 220, 230, 400, 460												
15	2208755	R	16.5 X 7	Iron	A, S			174	2308709	2218726	3008401	(8) - 5/8
16	2208756	L	16.5 X 7	Iron	A, S			174	2308709	2218727	3008402	(8) - 5/8
17	4208755	R	16.5 X 7	Iron	A, S	2.33		176	2308709	4218726	3008401	(8) - 5/8
18	4208756	L	16.5 X 7	Iron	A, S	2.33		176	2308709	4218727	3008402	(8) - 5/8
R-Short - Drive Axle												
BEARINGS:			Inner/Outer Cups: 592A / 572				Cones: 598A or 594A / 580			Seal O.D.: 6.31		
AXLE/APPLICATION: Eaton - 21, 22, 23, 26, 402, 451, 461, 521 Meritor - Q, R & S Series Spicer - 220, 230, 400, 460												
19	2208801	R	16.5 X 7	Iron	A, S			171	2308709	2218722	3008401	(8) - 5/8
20	2208802	L	16.5 X 7	Iron	A, S			171	2308709	2218723	3008402	(8) - 5/8
21	4208801	R	16.5 X 7	Iron	A, S	2.33		173	2308709	4219307	3008401	(8) - 5/8
22	4208802	L	16.5 X 7	Iron	A, S	2.33		173	2308709	4219308	3008402	(8) - 5/8

Notes:

M = 5.19 offset
Q = 5.44 offset

For general notes, see page 2.

Brake Drums

CentriFuse®
Hub & Drum Assemblies

CentruCast™
Hub & Drum Assemblies

Fasteners

Full Cast Hub & Drum Assemblies

Stud Piloted System: 10 Hole, 11-1/4" Bolt Circle (DCN)

Item #	Hub & Drum Part Number	R or L Hand	Brake Size	Hub Material	Wheel Usage	ABS Loc.	Foot Notes	Weight	Drum Part #	Hub and Bolt	Wheel Bolt	Drive Studs
N - Trailer Axle												
BEARINGS:			Inner/Outer Cups: HM218210/HM212011				Cones: HM218248/HM212049			Seal O.D.: 6.00		
AXLE/APPLICATION:			Dexter-D225K Eaton-ETA225J, EST230J			Ingersoll-A22,F22 KB-KBW		Meritor-TN, RQ, TQ,TQD,TNC Spicer-D22,K22				
1	403002	R	12.25 X 7.50	Iron	A, S		K, Y	119	126631	413001	861901	
2	403003	L	12.25 X 7.50	Iron	A, S		K, Y	119	126631	413002	861902	
3	443002	R	12.25 X 7.50	Iron	A, S	2.34	K, Y, Z	119	126631	453001	861901	
4	443003	L	12.25 X 7.50	Iron	A, S	2.34	K, Y, Z	119	126631	453002	861902	
5	2809003	R	16.5 X 7	Iron	A, S		Y	159	2308712	2819003	3008401	
6	2809004	L	16.5 X 7	Iron	A, S		Y	159	2308712	2819004	3008402	
7	4809003	R	16.5 X 7	Iron	A, S	2.33	Y	159	2308712	4819003	3008401	
8	4809004	L	16.5 X 7	Iron	A, S	2.33	Y	159	2308712	4819004	3008402	
P - Trailer Axle												
BEARINGS:			Inner/Outer Cups: HM518410 / HM518410				Cones: HM518445 / HM518445			Seal O.D.: 6.00		
AXLE/APPLICATION:			Eaton - EST225P, EST230P Fruehauf - PROPAR			Ingersoll-A24,F24 Meritor - TP		Spicer - P22				
9	2809303	R	16.5 X 7	Iron	A, S		Y	166	2308712	2819303	3008401	
10	2809304	L	16.5 X 7	Iron	A, S		Y	166	2308712	2819304	3008402	
11	4809303	R	16.5 X 7	Iron	A, S	2.2	Y	166	2308712	4819303	3008401	
12	4809304	L	16.5 X 7	Iron	A, S	2.2	Y	166	2308712	4819304	3008402	

Notes:

K = 10/8.75

Y = Assembly includes an unbalanced drum

Z = 80-tooth ABS rings for use with tire diameters 15" and 17.5"

For general notes, see page 2.

Brake Drums

CentriFuse®
Hub & Drum Assemblies

CentruCast™
Hub & Drum Assemblies

Fasteners

Full Cast Hub & Drum Assemblies

Low Platform Trailer Applications

Item #	Hub & Drum Part Number	Brake Size	Hub Material	ABS Loc.	Wheel Usage	Foot Notes	Weight	Drum Part #	Hub and Bolt	Wheel Bolt	
Hub Piloted Mounting											
8 Hole, 275mm Bolt Circle, Outboard Mounted Drum with M22 wheel bolts											
N - Trailer Axle											
BEARINGS: Inner/Outer Cups: HM218210 / HM212011 Seal O.D.: 6.00 Cones: HM218248 / HM212049											
AXLE/APPLICATION: SAE Configuration N											
1	400038	12.25 x 7.50	Iron	S		Y	133	630002	410002	3018503	
2	440038	12.25 x 7.50	Iron	S	2.34	Y, Z	134	630002	450002	3018503	
3	400067	12.25 x 7.50	Iron	A		Y	134	630002	410011	3018501	
4	440067	12.25 x 7.50	Iron	A	2.34	Y, Z	135	630002	450011	3018501	
P - Trailer Axle											
BEARINGS: Inner/Outer Cups: HM518410/HM518410 Cones: HM518445/HM518445 Seal O.D.: 6.00											
AXLE/APPLICATION: SAE Configuration P											
5	400107	12.25 x 7.50	Iron	S		Y	143	630002	413020	3018503	
6	440107	12.25 x 7.50	Iron	S	2.2	Y, Z	144	630002	453020	3018503	
7	400108	12.25 x 7.50	Iron	A		Y	144	630002	413021	3018501	
8	440108	12.25 x 7.50	Iron	A	2.2	Y, Z	145	630002	453021	3018501	

Stud Piloted Mounting											
10 Hole, 8.75" Bolt Circle, Inboard Mounted Drum with 3/4-16 bolts											
N - Trailer Axle											
BEARINGS: Inner/Outer Cups: HM218210 / HM212011 Seal O.D.: 6.00 Cones: HM218248 / HM212049											
AXLE/APPLICATION: SAE Configuration N											
9	403002 R	12.25 x 7.50	Iron	A, S		Y	119	126631	413001	861901	
10	403003 L	12.25 x 7.50	Iron	A, S		Y	119	126631	413002	861902	
11	443002 R	12.25 x 7.50	Iron	A, S	2.34	Y, Z	119	126631	453001	861901	
12	443003 L	12.25 x 7.50	Iron	A, S	2.34	Y, Z	119	126631	453002	861902	

Notes:
Y = Assembly includes an unbalanced drum
Z = 80-tooth ABS rings for use with tire diameters 15" and 17.5"

For general notes, see page 2.



8 Hole, Hub Piloted Assembly



10 Hole, Stud Piloted Assembly

Brake Drums

CentriFuse®
Hub & Drum Assemblies

CentruCast™
Hub & Drum Assemblies

Fasteners



LITERATURE ORDER FORM

Literature may also be ordered or downloaded from our website:

www.motorwheelcvs.com

Ship to: _____ Date ordered: _____
 ATTN: _____

 _____ Ordered by: _____

<u>Quantity Ordered</u>	<u>Form Number</u>	<u>Description</u>
_____	2-08	Print Catalog
HUB & DRUM LITERATURE		
_____	4-1004	Genuine CentriFuse Brake Drum Applications Tri-fold Brochure
_____	4-1090	CentriFuse "Accept No Substitutes" flyer
_____	4-1099	CentriFuse Wide Brake Advantage flyer
_____		CentriFuse "Ultimate Weight Savings" over Cast Drums flyer
_____		CentriFuse Severe Service flyer
_____	4-1084	CentriFuse Lite - Lightweight Brake Drum Sales Sheet
_____		Brake Drum Cross Reference Sheet
_____	4-0112	CentruCast Brake Drum Sales Sheet
_____	P107	Installation Procedures Poster
_____	4-7008	CentriSet Hub Systems Tri-Fold Brochure
_____	4-1022	10 Hole Ductile Iron Hub & Cast Drum Assy (Lowboy) Sales Sheet
_____	4-1023	8 Hole Ductile Iron Hub & Cast Drum Assy (Lowboy) Sales Sheet
_____	4-1051	Stemco Advantage Hub System Sales Sheet
WARRANTIES		
_____	4-1005	Genuine CentriFuse Brake Drum 10-Year Warranty
_____	4-1002	CentriFuse Lite Brake Drum 10-Year Warranty
_____	4-1007	CentruCast Hub & Drum 1 Year Limited Warranty
_____	4-2008	CentriSet Hub System Warranty
_____	571-3030	Stemco Advantage Hub System Warranty
TECH DATA SHEETS		
_____	TD1	TechData: Recommended Torque
_____	TD2	TechData: Description of Engineering Tests
_____	TD3	TechData: Lubrication of System Fasteners
_____	TD4	TechData: Brake Drum Mounting Procedures
_____	TD5	TechData: Nut Clamping Force Loss
_____	TD7	TechData: Paint Effect on Torque Tension
_____	TD8	TechData: Nut Tightening Procedure
_____	TD9	TechData: Loose Wheel Causes & Conditions
_____	TD10	TechData: Wheel Nut Clamping Force
_____	TD11	TechData: Belleville Washer Effect
_____	TD12	TechData: Brake Drum Mounting Problems
MISCELLANEOUS		
_____	3138501	Motor Wheel Hub Piloted Wheel System Installation Labels
_____	SQA 13-1	Berea Plant ISO 9001 Quality Certificate
_____	SQA 13-E	Berea Plant ISO 14001 Quality Certificate

Please submit literature request form by email or fax:

email: lsheeder@motorwheelcvs.com

fax: (734) 416-9141

Brake Drums

CentriFuse®
Hub & Drum Assemblies

CentruCast™
Hub & Drum Assemblies

Fasteners

WHEEL BOLTS

Wheel Bolts: Serrated

Part #	Thread	Finish Code	A Overall Length	B Thread Length	C Head Diameter	D Serration Diameter	E Shoulder Length	Head Marking	
86797	RH	3/4-16	1	3.02	1.22	1.31	1.00	1.39	
86798	LH		1						
87142	RH	1-1/8-16	1	3.56	1.80	1.50	1.25	1.68	
87143	LH		1						
87319	RH	3/4-16	1	2.51	1.25	1.19	0.81	1.06	
87320	LH		1						
88108	RH	1-1/8-16	1	2.96	1.96	1.50	1.25	1.00	
88109	LH		1						
89085	RH	1-1/8-16	3	2.96	1.96	1.50	1.25	1.00	
89086	LH		3						
89087	RH	1-1/8-16	3	3.27	2.27	1.50	1.25	1.00	
89088	LH		3						
90092	RH	M22X1.5	1	4.13	2.13	1.50	1.25	1.87	092
500000	RH	M22X1.5	1	5.11	3.59	1.69	0.933	1.17	500000
500001	RH	M22X1.5	1	4.11	2.59	1.69	0.933	1.17	500001
500004	RH	M22X1.5	1	3.25	2.01	1.26	0.94	0.91	500004
3018501	RH	M22X1.5	1	4.59	3.35	1.26	0.94	0.91	WQ
3018502	RH	M22X1.5	1	3.17	1.93	1.26	0.94	0.91	WR
3018503	RH	M22X1.5	1	3.66	2.42	1.26	0.94	0.91	WK
3008401	RH	3/4-16	1	2.60	1.28	1.26	0.94	0.98	VK
3008402	LH	3/4-16	1	2.60	1.28	1.26	0.94	0.98	VK
3008709	RH	1-1/8-16	1	3.15	1.91	1.54	1.25	0.96	VH
3008710	LH	1-1/8-16	1	3.15	1.91	1.54	1.25	0.96	VH

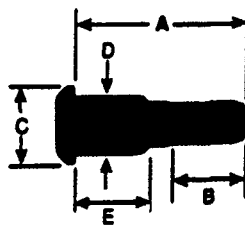
Wheel Bolts: Non-Serrated, Clipped Head

Part #	Thread	Finish Code	A Overall Length	B Thread Length	C Head Diameter	D Body Diameter	E Shoulder Length	Head Marking	
88799	RH	M22X1.5	1	4.22	3.06	1.62	0.98	0.85	799
88836	RH	M22X1.5	1	3.58	2.51	1.62	0.98	0.85	836
89620	RH	M22X1.5	1	4.80	3.73	1.62	0.98	0.85	620
90427	RH	M22X1.5	1	3.46	2.17	1.70	1.23	0.94	427
90807	RH	M22X1.5	1	3.20	2.51	1.62	0.98	0.73	807
91100	RH	M22X1.5	1	3.20	2.13	1.62	0.98	0.73	100
90114	RH	3/4-16	1	2.51	1.32	1.62	0.98	0.85	114
90115	LH		1						115
90575	RH	1-1/8-16	1	2.88	1.96	1.70	1.23	0.85	575
90576	LH		1						576
500006	RH	M22X1.5	1	3.42	2.58	1.47	0.89	0.5	500006
500007	RH	M22X1.5	1	4.42	3.58	1.47	0.89	0.5	500007

FINISH CODES:

1-PHOSPHATE & OIL

3-ZINC GOLD DICHROMATE



Brake Drums

CentriFuse®
Hub & Drum Assemblies

CentruCast™
Hub & Drum Assemblies

Fasteners

WHEEL NUTS

Wheel Nuts (DCN Type) For Stud Piloted Wheels

Single or Outer Cap Nuts

Type	Part Number	Thread	Nut Height	Wrench Size	Reference Part Number
A	84527 RH	1-1/8-16	0.88	1-1/2 Hex	3203801 (37891)
	84528 LH				3203802 (37892)
B	84523 RH	3/4-16	0.88	1-1/2 Hex	3205101 (37888)
	84524 LH				3205102 (37889)
A	3204501 RH	1-5/16-12	1.38	1-3/4 Hex	49416
	3204502 LH				49417
B	3205001 RH	1-1/8-16	1.00	1-3/4 Hex	67011
	3205002 LH				67012



Type A
Outer Dual & Front



Type B
Single

Inner Cap Nuts: For Steel Inner Wheels*

Part Number	Overall Length	Inner Thread	Outer Thread	Head Square	Reference Part #
3203403 RH	2.218	3/4-16	1-1/8-16	13/16	10708
3203404 LH					10709
3203401 RH	2.56	3/4-16	1-1/8-16	13/16	35336
3203402 LH					35337
3204503 RH	3.00	15/16-12	1-5/16-12	15/16	49414
3204504 LH					49415

* Aluminum wheels require special inner cap nuts. See your wheel supplier.



Type C

Wheel Nuts (CLN Type) For Hub-Piloted Wheels

Type	Part Number	Thread	Overall Height	Hex Size	Flange Diameter	Reference Part Number
C	88881	M22x1.5	1.38	1-1/2	2.00	
C	90846	M22x1.5	1.19	33mm	1.80	3208401

Recommended Nut Torque

Nut Type	Example Part Number	Stud or Bolt Size and Thread	Recommended Torque (ft/lb)
Double Cap Nut (DCN)	84523-24, 3203403-4	3/4-16	450-500
	84527-28	1-1/8-16	450-500
	3205701-2	15/16-12	750-900
	3204501-2	1-5/16-12	750-900
	3205001-2	1-1/8-16	750-900
Cone Lock Nuts (CLN)	88881,90846	M22x1.5	450-500
Rim Clamp Nuts		5/8-11	160-200
		3/4-10	200-260

NOTE: See wheel/vehicle manufacturer's recommendations for other mounting systems.

CAUTION: Low torque can cause the following problems: on disc-type wheels - broken studs, cracked disc, loss of wheel, enlarged bolt holes, excessive wear on wheel disc face and hub face. On cast spoke wheels - broken studs, rim spinout. Always re-torque wheel fasteners after 50-100 miles of vehicle operation to compensate for torque loss due to seating in of parts. This must be done every time wheels are re-installed.

Excessive torque can cause the following problems: on disc-type wheels - broken bolts, broken nuts, disc damage (ball seat breakdown, burr on edge of countersunk hole), distorted brake drum/rotor. On cast spoke wheels - broken studs, chorded rim, clamp bending .

MOTOR WHEEL®

COMMERCIAL VEHICLE SYSTEMS



www.motorwheelcvs.com

World Headquarters
8301 Ronda Drive
Canton, Michigan 48187 USA