

SCALA™

MEN'S COLLECTION BY DORFMAN PACIFIC | SUMMER 2020



KENTUCKY DERBY® | SCALA™ | SANTANA™ | DPC® | AEGEAN | INDIANA JONES™ | MOSSY OAK®



MEN'S COLLECTION BY DORFMAN PACIFIC | SUMMER 2020

For so long, people thought Dorfman was about selling hats. But really, we're about our hat community. You see a hat is just an accessory, but our millinery community is fostered by the artisans that hand make our hats, local shops that display our creations, and our customers' stories who wear them with distinction. This is coupled with our relentless commitment to service instilled by our founder, Jack Dorfman. Fashion trends are in a constant state of motion, but happy retail partners and valued customers are a constant for us.

SAGUARO | MC68-PUTTY | PG 56

SCALA™

An American Headwear Company Since 1921.


CONTENTS

KENTUCKY DERBY By Biltmore.....	4
SCALA™	
PANAMA	6
RAFFIA	15
STRAW	23
Santana™	
SANTANA	40
CARLOS	44
DPC™	
OUTDOOR CLOTH	50
WEATHERED COTTON	59
SOAKER	63
DRESS CLOTH	76
BUCKETS & BOONIES.....	81
USA.....	87
CAPS & VISORS.....	92
STRAW	107
WESTERN	132
INDIANA JONES™	136
MOSSY OAK®	142
INDEX.....	149
SALES REPS	151

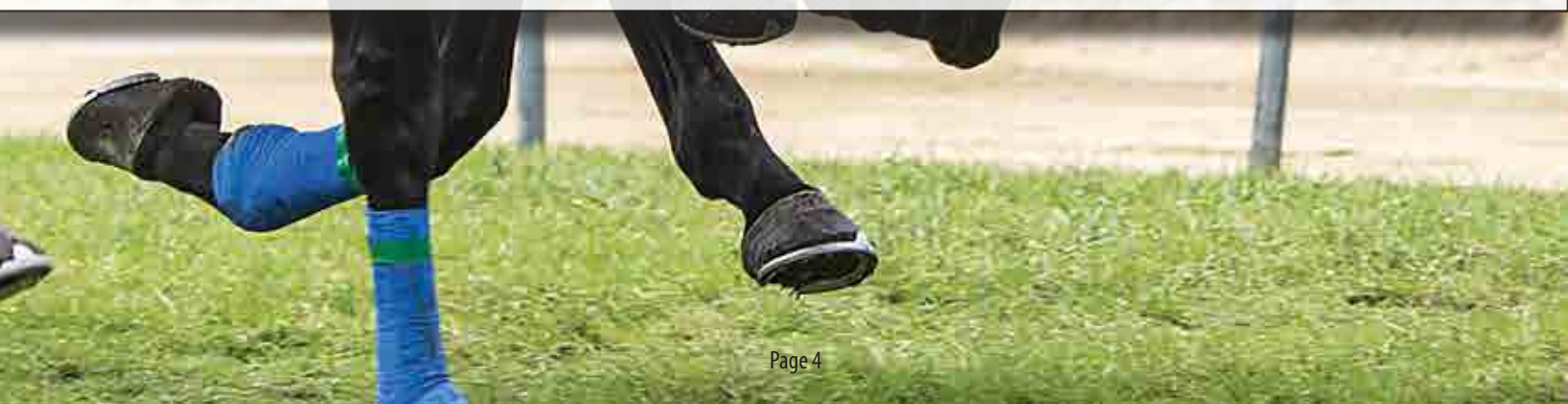


Engineered with brilliance, Biltmore has created a 100 year old legacy handcrafting the most beautiful hats ever made. High standards of production and masterful design have been our signature on every Biltmore hat since 1917. That is why every other maker compares their hats to the company that sets the standard - Biltmore.

It has been our privilege to bring this heritage to the Kentucky Derby, creating for you a line of officially licensed product that was once only available at Churchill Downs.

 *shop this collection, anywhere this symbol is used, you are shopping officially licensed hats.*

go to BILTMOREHATS.COM or call 1-800-325-HATS for the complete Biltmore collection



ELWOOD | KDM8-IVORY

Toyo Safari with 3 1/4" Brim | Grosgrain Band with Ribbon Overlay
Ivory | Sold by Size M-XL | Dri-Lex® Sweatband
Minimum 1 | 90TGG0



JUSTIFY | KDM7-IVORY

Shantung Fedora with 2" Brim | Grosgrain Band
Ivory | Sold by Size M-XL | Dri-Lex® Sweatband
Minimum 1 | 90FST0



UNBRIDLED | KDM1

Braided Hemp Fedora with 2 1/2" Brim | Two-Tone Ribbon Band
Sold by Color | Sold by Size S-XL | Leather Sweatband
Minimum 1 | 90CGL0



Pink



Blue

COUNT FLEET | KDM6-STL

Braided Hemp Diamond Crown with 1 1/2" Brim | Grosgrain Band
Steel | Sold by Size M-XL | Leather Sweatband
Minimum 1 | 90JNZ0



SEATTLE SLEW | KDM5-BLEACH

Handwoven Panama Fedora with 2 1/2" Brim | Grosgrain Band
Bleach | Sold by Size S-XL | Leather Sweatband
Minimum 1 | 90XIJ0





SCALA™

If you're looking for a straw hat it's because you're versatile, and you need something equally as flexible and accommodating to add to your wardrobe. Particularly well suited for the summer, straw hats of any make can brighten your day and keep the feeling of freedom flowing. Think about that dress toyo you recently saw staring back at you, or those casual straws and paper braid pieces. They're there to make your day that much more exciting and your wardrobe that much more appealing.

Straw hats have been around for ages, but they remain unchanged as a premier addition to your hatrack. Your hat is your way of adding something special, and your straw hat is your Swiss army knife of accessories, ready, like you are, for anything and everything.

DRUMS • MS448OS-NAT • PG 26



ROSWELL • P219-NAT • PG 9

SCALA

ROSWELL | P219-NAT  **GRADE 8**

Handwoven Grade 8 Panama Safari with 2 1/4" Brim | 16-Ligne Grosgrain Band, Covered Crown Tip and Teflon® Coated
Natural | Sold by Size M-XL | Vom Baur Sweatband
Minimum 1 | 32IQFO



EDGEWOOD | P223-BLEACH  **GRADE 8**


Handwoven Grade 8 Panama Safari with 3" Brim | 12-Ligne Grosgrain Band, Covered Crown Tip and Teflon® Coated
Bleach | Sold by Size M-2X | Vom Baur Sweatband
Minimum 1 | 32USV0



ORLEANS | P125-NAT  



Handwoven Panama Gambler with 3" Brim | 12-Ligne Grosgrain Band, Covered Crown Tip and Teflon® Coated
Natural | 1/S, 2/M, 2/L, 1/XL
Also Sold by Size S-XL
Minimum 6 | 32CM00



MASA | P176-NAT 

Handwoven Panama Gambler with 3 3/4" Brim | 12-Ligne Grosgrain Band, Covered Crown Tip and Teflon® Coated
Natural | 1/S, 2/M, 2/L, 1/XL
Also Sold by Size M-XL
Minimum 6 | 32BRN0



CHANDLER | P123-NAT  

Handwoven Panama Safari with 2 3/8" Brim | 16-Ligne Grosgrain Band, Covered Crown Tip and Teflon® Coated
Natural | 1/S, 2/M, 2/L, 1/XL
Also Sold by Size S-2X
Minimum 6 | 32JYV0



HOT SPRINGS | P180-BLEACH

BEST SELLER  MADE IN USA

Handwoven Panama C-Crown with 2 5/8" Brim | 16-Ligne Grosgrain Band, Covered Crown Tip and Teflon® Coated
Bleach | 1/S, 2/M, 2/L, 1/XL
Also Sold by Size S-2X
Minimum 6 | 32PAK0



TEMPE | P181-NAT

 MADE IN USA

Handwoven Panama Outback with Dimensional 2 1/2" Brim | 2-Pleat Cotton Band, Covered Crown Tip and Teflon® Coated
Natural | 1/S, 2/M, 2/L, 1/XL
Also Sold by Size M-2X
Minimum 6 | 32SQA0



NAPA | P179

 MADE IN USA

Handwoven Panama Snap Brim with 2 1/4" Brim | 16-Ligne Grosgrain Band, Covered Crown Tip and Teflon® Coated
Sold by Color | 1/S, 2/M, 2/L, 1/XL
Also Sold by Size M-2X
Minimum 6 | 32RCN0



Natural



Bleach

PALMER | P208-NAT

 MADE IN USA

Handwoven Panama Safari with 2 3/4" Brim | Grosgrain Band, Covered Crown Tip and Teflon® Coated
Natural | 1/S, 2/M, 2/L, 1/XL
Also Sold by Size M-XL
Minimum 6 | 32IBP0



ALBUQUERQUE | P213-NAT

Handwoven Panama Outback with 3" Brim | Leather Band, Covered Crown Tip
Natural | Sold by Size M-XL | Dri-Lex® Sweatband
Minimum 1 | 117JPZ





TAOS • P122 • PG 11
SCALA

TAOS | P122  MADE IN USA

Handwoven Panama Outback with 2 7/8" Brim | Jute Band, Covered Crown Tip and Teflon® Coated
Sold by Color | 1/S, 2/M, 2/L, 1/XL Also Sold by Size S-XL | Natural Also Sold by Size 2X
Minimum 6 | 32NCJ0



Putty



Natural

MUIRFIELD | P221-NAT

Handwoven Panama Outback with 3" Brim | Leather Band, Covered Crown Tip
Natural | Sold by Size M-XL | Dri-Lex® Sweatband
Minimum 1 | 117HFR



HIGHLANDS | P226-BLEACH

Handwoven Panama Fedora with 2 5/8" Brim | 16-Ligne Grosgrain Band,
Covered Crown Tip and Teflon® Coated
Bleach | Sold by Size M-XL
Minimum 1 | 117IKQ



COLT | P227-NAT

Handwoven Panama Outback with Dimensional 2 1/2" Brim | 2-Pleat Cotton Band,
Covered Crown Tip and Teflon® Coated
Natural | Sold by Size M-XL
Minimum 1 | 117BCI




COZA | P228-NAT PACKABLE

Packable Twisted Panama Outback with 2 3/4" Brim | Grosgrain Band
Natural | Sold by Size M-XL
Minimum 1 | 117MJE



Packable

PADDOCK | P369-NAT  **MADE IN USA**

Handwoven Panama Skimmer with 2 3/8" Brim | Grosgrain Band, Covered Crown Tip and Teflon® Coated
Natural | 1/M, 3/L, 2/XL | Vom Baur Sweatband
Also Sold by Size M-2X
Minimum 6 | 32YXZO



DUXBURY | SDS914-TEA

Handwoven Panama Fedora with 2" Brim | Grosgrain Band with Ribbon Overlay, Covered Crown Tip
Tea | 1/M, 3/L, 2/XL
Minimum 6 | 117AZZ





PADDOCK • P369-NAT • PG 12

SCALA



PUERTO • MR1120S-NAT • PG 15

SCALA

PUERTO | MR1120S-NAT

BEST SELLER **COOLMAX**

Fine Hand Crocheted Raffia Outback with 3" Brim | Leather Band, Covered Crown Tip and Covered Underbrim Natural | 2-S/M, 4-L/XL | Elasticized COOLMAX® Sweatband
Also Sold by Size S/M, L/XL
Minimum 6 | 193IUZ



SOL | MR1130S-NAT

Fine Hand Crocheted Raffia Gambler with 3 1/4" Brim | Web Band, Golf Ornament Natural | 2-S/M, 4-L/XL | Elasticized Sweatband
Also Sold by Size S/M, L/XL
Minimum 6 | 131EEA



COBA | MR1940S-TEA **COOLMAX**

Hand Crocheted Raffia Fedora with 2" Brim | Grosgrain Band Tea | 2-S/M, 4-L/XL | Elasticized COOLMAX® Sweatband
Also Sold by Size S/M, L/XL
Minimum 6 | 1930EB



BRIARE | MR2110S-TEA **COOLMAX**

Fine Hand Crocheted Raffia Safari with 3" Brim | Weathered Leather Band Tea | 2-S/M, 4-L/XL | Elasticized COOLMAX® Sweatband
Also Sold by Size S/M, L/XL
Minimum 6 | 1310NN



TULUM | MR420S

BEST SELLER **COOLMAX**

Fine Hand Crocheted Raffia Safari with 2 1/2" Brim | Leather Band, Covered Crown Tip Sold by Color | 2-S/M, 4-L/XL | Elasticized COOLMAX® Sweatband
Also Sold by Size S/M, L/XL
Minimum 6 | 193UEK



Natural



Tea

DRIVER | 3210S-NAT



8/10mm Braid Raffia Gambler with 3 1/4" Brim | Web Band, Golf Ornament
 Natural | 2-S/M, 4-L/XL | Elasticized COOLMAX® Sweatband Also Sold by Size S/M, L/XL
 Minimum 6 | 131GXH



CURRITUCK | MR2050S-NAT 

8/10mm Braid Raffia Fedora with 2 3/4" Brim | Leather Band, Feather
 Natural | 2-S/M, 4-L/XL | Elasticized COOLMAX® Sweatband
 Minimum 6 | 131RNP



RAVENELL | 319-NAT

Raffia Outback with 3 1/2" Brim | Faux Leather Band
 Natural | 1/S, 5/M, 5/L, 1/XL
 Minimum 12 | 53UZTO



PAHOA | MR2070S-NAT 

Raffia Safari with 2 1/2" Brim | 2-Pleat Printed Band
 Natural | 2-S/M, 4-L/XL | Elasticized COOLMAX® Sweatband
 Minimum 6 | 60WPV0



MONTEREY | MR1960S 

Braid Raffia Safari with 2 1/2" Brim | Grosgrain Band
 Sold by Color | 2-S/M, 4-L/XL | Elasticized COOLMAX® Sweatband
 Minimum 6 | 600EVO



Natural



Black



CURRITUCK • MR205OS-NAT • PG 16

SCALA[®]



REHOBOTH • MR2020S-NAT • PG 19

SCALA

RIO GRANDE | MR2160S-ASST 

8/10mm Braid Raffia Safari with 2 1/2" Brim | Braided Raffia Band
3-Pineapple, 3-Turtle | 2-S/M, 4-L/XL | Elasticized COOLMAX® Sweatband
Minimum 6 | 600IJO



Pineapple



Turtle

GLOBAL | MR2170S-NAT 

8/10mm Braid Raffia Safari with 3" Brim | Leather Band, Feather
Natural | 2-S/M, 4-L/XL | Elasticized COOLMAX® Sweatband
Minimum 6 | 131DGQ



SKY | MR2180S-NAT 

8/10mm Braid Raffia Fedora with 2" Brim | Distressed Ribbon Band
Natural | 2-S/M, 4-L/XL | Elasticized COOLMAX® Sweatband
Minimum 6 | 60FEX0



VENTOR | MR2190S-NAT 

8/10mm Braid Raffia Outback with 3" Brim | Faux Leather Band
Natural | 2-S/M, 4-L/XL | Elasticized COOLMAX® Sweatband
Minimum 6 | 60NSJO



REHOBOTH | MR2020S-NAT 

Matte Raffia Fedora with 2 1/4" Brim | Grosgrain Band
Natural | 2-S/M, 4-L/XL | Elasticized COOLMAX® Sweatband
Also Sold by Size S/M, L/XL
Minimum 6 | 147AOS



SAINT LOUIS | MS192 BEST SELLER

Matte Raffia Fedora with Paper Braid 2" Brim | Stripe Ribbon Band
 Sold by Color | 2/M, 3/L 1/XL
 Also Sold by Size M-XL
 Minimum 6 | 131HWY



Brown



Natural

ODESSA | MR192-BURNT

Raffia Outback with Shapeable 3 1/2" Brim | Leather Band
 Burnt | 2/M, 3/L, 1/XL | Dri-Lex® Sweatband
 Also Sold by Size M-XL
 Minimum 6 | 69JWWO



SALISBURY | MR2120S-NAT COOLMAX

Raffia Fedora with 1 7/8" Brim | Braided Jute Band
 Natural | 2-S/M, 4-L/XL | Elasticized COOLMAX® Sweatband
 Minimum 6 | 131KGX



DORADO | MR2150S-ASST COOLMAX

Raffia Safari with 3" Brim | 3-Pleat Tropical Print Band
 3-Black, 3-Blue | 2-S/M, 4-L/XL | Elasticized COOLMAX® Sweatband
 Minimum 6 | 131ZQS



Black




Blue



CALISTOGA • MD41-IVORY • PG 23

SCALA

COROLLA | MR2140S-NAT 

Raffia Gambler with 3" Brim | 3-Pleat Tropical Print Band
Natural | 2-S/M, 4-L/XL | Elasticized COOLMAX® Sweatband
Minimum 6 | 131NUI



OBSERVER | MR2210S-NAT  

Raffia Outback with 3" Brim | Weathered Cotton Band, Chin Cord
Natural | 2-S/M, 4-L/XL | Elasticized COOLMAX® Sweatband
Minimum 6 | 600J00



Chin Cord

PISMO | MR480S-NAT  

Raffia Safari with 3" Brim | Faux Leather Band
Natural | 4-S/M, 8-L/XL | Elasticized COOLMAX® Sweatband
Minimum 12 | 60RWK0



PARKER | MR560S-NAT 

Raffia Outback with 3" Brim | Faux Leather Band, Kangaroo Badge
Natural | 2-S/M, 4-L/XL | Elasticized Sweatband
Minimum 6 | 60MDF0



CODY | MR73-NAT 


Raffia Gambler with 3" Brim | Pineapple Tape Band, Palm Tree Pin
Natural | 2/M, 3/L, 1/XL
Minimum 6 | 60VEX0



PETOSKEY | MR74-NAT 

Raffia Safari with 2 1/2" Brim | Pineapple Tape Band, Palm Tree Pin
Natural | 2/M, 3/L, 1/XL
Minimum 6 | 131RWH



MARCO | MR960S-ASST 

Raffia Gambler with 3" Brim | Turtle Tape Band
3-Black, 3-Khaki | 2-S/M, 4-L/XL | Elasticized COOLMAX® Sweatband
Minimum 6 | 131LIU



Khaki



Black

SAINT PAUL | MR9-NAT 

Raffia Gambler with 3" Brim | Jute Band, Palm Tree Pin
Natural | 1/S, 5/M, 5/L, 1/XL
Minimum 12 | 131WUR



CALISTOGA | MD41-IVORY

5 BU Toyo Fedora with 2" Brim | Stripe Ribbon Band
Ivory | 1/M, 3/L, 2/XL
Also Sold by Size S-XL
Minimum 6 | 131ZVL



TUSCON | MS239-NAT  

5 BU Toyo Safari with 2 7/8" Brim | 12-Ligne Grosgrain Band
Natural | 2-S/M, 4-L/XL | Elasticized COOLMAX® Sweatband
Also Sold by Size S/M, L/XL
Minimum 6 | 131WKX



GONDOLA | MS369-BLEACH 

Braided Laichow Boater with 2" Brim | Grosgrain Band
Bleach | 1/S, 2/M, 2/L, 1/XL
Also Sold by Size S-2X
Minimum 6 | 131CPI



ROCKLAND | MS371-IVORY

5 BU Toyo Outback with 3" Brim | Feather Band
Ivory | Sold by Size M-XL
Minimum 1 | 25LOHO



GILBERT | MS3990S-NAT **COOLMAX**

Toyo Safari with 2 1/2" Brim | 3-Pleat Linen Band
Natural | 2-S/M, 4-L/XL | Elasticized COOLMAX® Sweatband
Minimum 6 | 103YRF



SHADIE | MS4470S-IVORY



Matte Toyo Safari with 2 3/4" Brim | Tropical Print Band with Ribbon Overlay, Lined and Covered Underbrim
Ivory | 2-S/M, 4-L/XL | Elasticized COOLMAX® Sweatband
Minimum 6 | 1030AL



MCALLEN | MS4240S



Toyo Outback with 3" Brim | Faux Leather Band with Braided Overlay, Tails
Sold by Color | 2-S/M, 4-L/XL | Elasticized COOLMAX® Sweatband
Minimum 6 | 60TNC0



Tea



Ivory



MCALLEN • MS424OS-IVORY • PG 24
SCALA

SAUSALITO | MT110S

Toyo Safari with 2 1/2" Brim | 3-Pleat Cotton Band
Sold by Color | 2-S/M, 4-L/XL | Elasticized Sweatband
Also Sold by Size S/M, L/XL
Minimum 6 | 53WZWO



Natural



Putty

SAUSALITO | MT11-NAT

Toyo Safari with 2 1/2" Brim | 3-Pleat Cotton Band
Natural | Sold by Size 2X
#N/A

DRUMS | MS4480S-ASST NEW **COOLMAX**

Fine Braid Toyo Fedora with 2" Brim | Stripe Ribbon Band
3-Indigo, 3-Navy | 2-S/M, 4-L/XL | Elasticized COOLMAX® Sweatband
Minimum 6 | 103XAW



Navy



Indigo

SLIDER | MS4490S NEW **COOLMAX**

Fine Braid Toyo Safari with 3" Brim | Ribbon Band
Sold by Color | 2-S/M, 4-L/XL | Elasticized COOLMAX® Sweatband
Minimum 6 | 15600U



Toast



Natural

WYATT | MS3970S [COOLMAX](#)

Fine Braid Toyo Fedora with 2" Brim | Grosgrain Band
Sold by Color | 2-S/M, 4-L/XL | Elasticized COOLMAX® Sweatband
Also Sold by Size S/M, L/XL
Minimum 6 | 103RIR



Natural



Black

MILWAUKEE | MS164

Paper Braid Diamond Crown with 1 1/2" Brim | Stripe Ribbon Band
Sold by Color | 2/M, 3/L, 1/XL
Minimum 6 | KGB011



Toast



Ivory



Black

DEL MAR | MS324

Vented Paper Braid Fedora with 2" Brim | Stripe Ribbon Band
Sold by Color | 1/M, 3/L, 2/XL
Also Sold by Size S-XL
Minimum 6 | EXD012



Ivory



Black



WYATT • MS397OS-NAT • PG 27

SCALA

YORK | MS377

Paper Braid Fedora with 2 1/3" Brim | Grosgrain Band

Sold by Color | 2/M, 3/L, 1/XL

Black Also Sold by Size M-XL

Minimum 6 | YYP012



Black



Tea

BAYTOWN | MS426

Vented Paper Braid Fedora with 1 3/4" Brim | Ribbon Band

Sold by Color | 1/M, 3/L, 2/XL


Minimum 6 | USZ012



Ivory



Tea

DEPOE | MS4290S 

Paper Braid Fedora with 2" Brim | Grosgrain Band

Sold by Color | 2-S/M, 4-L/XL | Elasticized COOLMAX® Sweatband

Minimum 6 | 1311CI



Brown



Black



Grey



Taupe



PADRE • MS427-IVORY • PG 36

SCALA



DEPOE • MS429OS-BLK • PG 29

SCALA

CHANTER | MS4510S NEW  

Paper Braid Safari with 2 1/2" Brim | 3-Pleat Cotton Band
Sold by Color | 2-S/M, 4-L/XL | Elasticized COOLMAX® Sweatband
Minimum 6 | TIA012



White



Black

KNOT | MS4530S-NAT NEW 

Vented Paper Braid Safari with 2 1/2" Brim | 3-Pleat Cotton Band
Natural | 2-S/M, 4-L/XL | Elasticized COOLMAX® Sweatband
Minimum 6 | IFH013



JAMER | MS4520S NEW 

Paper Braid Fedora with 2" Brim
Sold by Color | 2-S/M, 4-L/XL | Elasticized COOLMAX® Sweatband
Minimum 6 | WQH012



Tea



White

PENTANI | MS454 NEW

Paper Braid Fedora with 2" Brim | Grosgrain Band

Sold by Color | 1/M, 3/L, 2/XL

Minimum 6 | AUU013



White



Black

MISTIE | MS4550S NEW COOLMAX

Vented Paper Braid Fedora with 2" Brim | Stitched Ribbon Band

Sold by Color | 2-S/M, 4-L/XL | Elasticized COOLMAX® Sweatband

Minimum 6 | 103SIP



Ivory



Black

ASTORIA | MS269 

Paper Braid Safari with 2 1/2" Brim | Leather Band, Antique Buckle Set

Sold by Color | 3/M, 6/L, 3/XL

Ivory Also Sold by Size M-XL

Minimum 12 | KBN013



Tea



Ivory



NASHVILLE • MS318-TEA • PG 35

SCALA

NASHVILLE | MS318 BEST SELLER

Vented Paper Braid Safari with 2 1/2" Brim | Faux Leather Band, Covered Crown Tip

Sold by Color | 1/M, 3/L, 2/XL

Natural Also Sold by Size M-XL

Minimum 6 | YIE014



Natural



Tea

BOARDWALK | MS351-TAN UPF 50+

Paper Braid Safari with 2 1/2" Brim | 3-Pleat Cotton Band

Tan | 3/M, 6/L, 3/XL

Minimum 12 | LEG011



CHATEAU | MS321 BEST SELLER

Paper Braid Safari with 2 1/2" Brim | 3-Pleat Cotton Band

Sold by Color | 1/M, 3/L, 2/XL

Also Sold by Size M-XL

Minimum 6 | HVS013



Ivory



Tea

PAGE | MS3750S



Paper Braid Outback with 3" Brim | Faux Leather Band, Faux Leather Chin Cord
Sold by Color | 2-S/M, 4-L/XL | Elasticized COOLMAX® Sweatband
Minimum 6 | UGF017



Tea



Natural

BAR HARBOR | MS3980S-NAVY



Paper Braid Safari with 2 3/4" Brim
Navy | 2-S/M, 4-L/XL | Elasticized COOLMAX® Sweatband
Minimum 6 | 60HGHO



PADRE | MS427-IVORY



Paper Braid Safari with 2 1/2" Brim | 3-Pleat Tropical Print Band
Ivory | 1/M, 3/L, 2/XL
Minimum 6 | HIS013



RIDER | MS1110S-ASST



COOLMAX

Twisted Seagrass Gambler with 3 1/4" Brim | 3-Pleat Tropical Print Band, Covered Underbrim and Tip
4-Black, 2-Red | 2-S/M, 4-L/XL | Elasticized COOLMAX® Sweatband
Minimum 6 | 25HNX0



Red



Black

JAMESTOWN | MS425-TEA



Vented Paper Braid Gambler with 3" Brim | Faux Leather Band
Tea | 1/M, 3/L, 2/XL
Minimum 6 | 60IU80



CLUB | 350GOS-NAT

COOLMAX

Palm Fiber Gambler with 3" Brim | Leather Band, Golf Ornament
Natural | 2-S/M, 4-L/XL | Elasticized COOLMAX® Sweatband
Also Sold by Size S/M, L/XL
Minimum 6 | 131GUE



19TH HOLE | MS40S-ASST



Twisted Seagrass Gambler with 3" Brim | 3-Pleat Cotton Band, Covered Underbrim and Tip
 3-Dk. Green, 3-Khaki, 3-Navy, 3-Olive | 4-S/M, 8-L/XL | Elasticized COOLMAX® Sweatband
 Minimum 12 | 25UKV0



Dk. Green



Navy



Khaki



Olive

PORTLAND | MS30S-ASST



Twisted Seagrass Safari with 3" Brim | 3-Pleat Cotton Band, Covered Underbrim and Tip
 3-Dk. Green, 3-Khaki, 3-Navy, 3-Olive | 4-S/M, 8-L/XL | Elasticized COOLMAX® Sweatband
 Minimum 12 | 25YRNO



Olive



Navy



Dk. Green



Khaki

MANASSAS | MS2760S



Toyo Safari with 3" Brim | Faux Leather Band
 4-Tea, 2-Brown | 2-S/M, 4-L/XL | Elasticized Sweatband
 Natural Also Sold by Color
 Minimum 6 | 95ABW0




Tea



Brown



Natural

PAR | MS2990S-NAT 

Twisted Seagrass Gambler with 3" Brim | Web Band with Ribbon Overlay, Covered Crown Tip and Covered Underbrim
Natural | 2-S/M, 4-L/XL | Elasticized COOLMAX® Sweatband
Minimum 6 | 95PZQ0



QUEST | MS4320S-NAT



Matte Seagrass Safari with 2 1/2" Brim | 3-Pleat Tropical Print Band, Covered Underbrim and Tip
Natural | 2-S/M, 4-L/XL | Elasticized COOLMAX® Sweatband
Minimum 6 | 103XQJ



MAKAWAO | TT90S-NAT



Twisted Toyo Gambler with 3" Brim | Web Band with Overlay, Golf Ornament and Covered Underbrim and Tip
3-Blue, 3-Green | 2-S/M, 4-L/XL | Elasticized COOLMAX® Sweatband
Minimum 6 | 53MEX0



Green



Blue





SANTANA
by CARLOS SANTANA™



CARLOS
BY CARLOS SANTANA®

Why Santana Hats?

Rare is it when someone is so talented that they are able to transcend genres and successfully bring their creative passion to two completely different arenas. We all know Carlos Santana for his guitar solos and magical musical feats. But his foray into fashion has been equally as fantastic.

Whether baseball caps or fedoras or pork pies, Santana has managed to infuse his line of hats with the same melodies that have reverberated from loudspeakers at his concerts for decades. Indeed, we would be remiss if we did not reflect upon how the Santana Hat Collection exudes the passion, the charisma of Carlos Santana's musical artistry. Santana first made waves in the 60s when his surprising but ... smooth melding of Latino soul music and classic rock first melted the hearts of concert-goers everywhere.

AVANT GARD | SAN715

NEW

Braided Hemp Fedora with 2 1/2" Brim | Faux Snake Skin Band, Abraxas Angel Pin
Sold by Color | Sold by Size M-XL
Minimum 1 | 117FEU



Brown



Grey

REFLECTION | SAN716

NEW

Poly Braid Fedora with 3" Brim | Leather Band, Jade Stones and Abraxas Angel Pin
Sold by Color | Sold by Size M-XL
Minimum 1 | 117SZB



Black



Cognac

ECLECTIC | SAN712-ASST

Wool Felt Fedora with Toyo 3 1/4" Brim | Ribbon Band, Abraxas Angel Pin
1-Black, 1-Natural | Sold by Size M-XL
Minimum 2 | 117VIS02750FJ



Natural

Black

ARIEL | SAN714-ASST

Wool Felt Fedora with Toyo 3 1/4" Brim | Ribbon Band, Abraxas Angel Pin
1-Natural, 1-Navy | Sold by Size M-XL
Minimum 2 | 117TFQ02750VB



Navy

Natural

TRISHUL | SAN705-NAVY

Hemp Fedora with 2" Brim | Grosgrain Band, Abraxas Angel Pin
Navy | Sold by Size M-XL | Suede Sweatband
Minimum 1 | 117MFT



LUMINOSITY | SAN706-BLK

Shantung Fedora with 2 1/8" Brim | Grosgrain Band, Abraxas Angel Pin
Black | Sold by Size M-XL | Dri-Lex® Sweatband
Minimum 1 | 117HIR



DOVE | SAN109-GREY

Garment Washed Cotton Cadet | Leather with Embroidery and EasyTape® Backstrap
Grey | One Size Fits Most
Minimum 1 | 08HYPO



SALVADOR | SAN149-NAT

Shantung Fedora with 2" Brim | Grosgrain Band with Jute Overlay, Abraxas Angel Pin
Natural | Sold by Size M-XL | Leather Sweatband
Minimum 1 | 117JHV



MOHICAN | SAN206-ASST

Vented Toyo Fedora with Bound 1 3/4" Brim | Ribbon Band with Faux Leather Overlay, Guitar Pin
2-Black, 2-Brown, 2-Honey | 3-S/M, 3-L/XL
Also Sold by Color | Also Sold by Size
Minimum 6 | 60UHRO



Black



Brown



Honey

MEMENTO | SAN266-ASST

Paper Braid Fedora with 1 1/2" Brim | Guitar Pin
2-Black, 2-Blue, 2-Brown, 2-Grey, 2-Olive | 5-S/M, 5-L/XL
Minimum 10 | 98WNX0



Black



Blue



Brown



Grey



Olive

BLISS | SAN326-ASST

Paper Braid Fedora with 1 3/4" Brim | Ribbon Band
3-Navy, 3-Tea | 2/M, 2/L, 2/XL | Elasticized Sweatband
Minimum 6 | 53ISA0



Tea



Navy

FORWARD | SAN359

Polyester Fedora with 1 1/2" Brim | Grosgrain Band with Ribbon Overlay, Feather and Guitar Pin
Sold by Color | 2/M, 2/L, 2/XL
Minimum 6 | 53VTU0



Black



Blue



Brown



Grey

ESSENCE | SAN361-ASST

Matte Toyo Fedora with 1 3/4" Brim | Floral Band, Guitar Pin
6-Natural, 6-Navy | 4/M, 4/L, 4/XL
Minimum 12 | 53GVO0



Natural



Navy

DORSEY | SAN376

Polyester Fedora with Paper Braid 1 3/4" Brim | Two-Tone Ribbon Band, Sating Lining and Guitar Pin

Sold by Color | 2/M, 2/L, 2/XL

Minimum 6 | 53TFWO



Beige



White

MIDAS | SAN392-ASST

NEW

Linen Fedora with 1 5/8" Brim | Print Band, Print Lining and Guitar Pin

3-Grey, 3-Navy, 3-Sage, 3-Tea | 4/M, 4/L, 4/XL

Minimum 12 | 98YCQ0



Grey



Navy



Sage



Tea

SHOWMAN | SAN394

NEW

Toyo Fedora with Bound 2 3/8" Brim | Tie Print Band, Guitar Pin

Sold by Color | 2/M, 2/L, 2/XL

Minimum 6 | 53QSY0



Grey



Natural

JOURNEY | SAN384

Herringbone Cotton Fedora with Raffia Braid 2" Brim | Grosgrain Band
Sold by Color | 2/M, 2/L, 2/XL
Minimum 6 | 53KUJ02550AA



Grey



Brown

WEST | SAN381-GREY

5 Bu Toyo Fedora with 2 3/4" Brim | Guatemalan Band
Grey | 1/S, 2/M, 2/L, 1/XL
Minimum 6 | 60SGVO



CONCERT | SAN391-ASST

NEW

Paper Braid Diamond Crown with 1 3/4" Brim | Paisley Band, Guitar Pin
4-Brick, 4-Forest, 4-Tea | 3/M, 6/L, 3/XL
Minimum 12 | 60JHFO



Brick



Forest



Tea

1969 | SAN389-BRN NEW

Wax Cotton Fedora with 2 1/2" Brim | Bandana Band
Brown | 3/M, 3/L
Minimum 6 | 53NAXO



EUPHORIA | SAN390-NAVY NEW

Cotton Ivy
Navy | 2/M, 2/L, 2/XL
Minimum 6 | 53EBHO



ROMEO | SAN388 NEW

Cotton Fedora with Bound 1 1/2" Brim | Faux Leather Band
Sold by Color | 2/M, 2/L, 2/XL
Minimum 6 | 53JMRO



Grey

Natural

Navy

COBAN | SAN377-ASST

Cotton Blend Fedora with 1 5/8" Brim | Ribbon Band with Overlay, Print Lining and Guitar Pin
3-Azure, 3-Kelly | 2/M, 2/L, 2/XL
Minimum 6 | 53CVJ0



Azure



Kelly

ANTIGUA | SAN378-ASST

Cotton Ivy | Print Lining
3-Azure, 3-Kelly | 2/M, 2/L, 2/XL
Minimum 6 | 53JDK0



Azure



Kelly

AIRE | SAN393

NEW

Cotton Newsboy
Sold by Color | 2/M, 2/L, 2/XL
Minimum 6 | 131ENX



Brown



Grey

DPCTM

You want a hat that can withstand a little bit of wear and tear, we have you covered. Our hats are ideal for the consumer who wants to bring the style of the clubhouse to the rigors of a day hike. With a UPF factor of 50+ and water-retaining technology, our fabrics protect you from the sun while allowing you to enjoy the great outdoors.



OUTDOOR CLOTH

EUCALYPTUS | 943-NAT | PG 52

HIKER | 863L



Water Repellent Garment Washed Twill Safari with 2 1/2" Brim | Faux Leather Band
 Sold by Color | 1/S, 4/M, 5/L, 2/XL
 Also Sold by Size M-XL | Khaki Also Sold by Size 2X, 3X
 Minimum 12 | 77JGJ0



Charcoal



Black



Bark



Khaki



Putty



Olive

TRAILMAN | 863M



Garment Washed Twill Safari with 2 3/8" Brim | Mesh Sidewall
 Sold by Color | 1/S, 4/M, 5/L, 2/XL
 Also Sold by Size M-XL
 Minimum 12 | 77OTA0



Putty



Khaki

EUCALYPTUS | 943-NAT



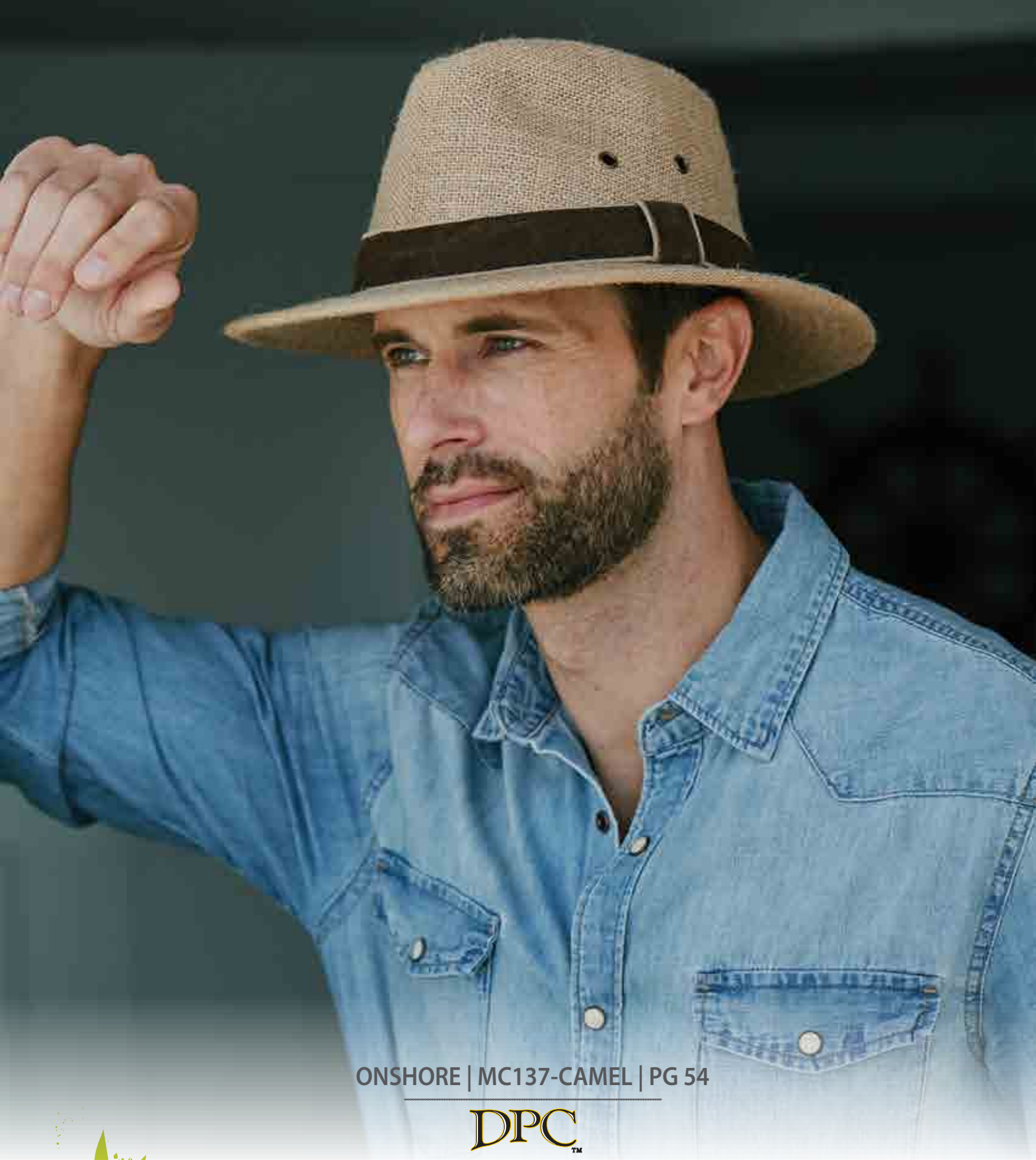
I Float

Scotchgard™ Treated Canvas Sailing Hat with Floatable 3" Brim |
 Covered Underbrim with Chin Cord and Removable Flotation Foam
 Natural | 1/S, 5/M, 5/L, 1/XL
 Minimum 12 | 53OJ00



UNDERBRIM





ONSHORE | MC137-CAMEL | PG 54

DPCTM



Why hemp? Because it is, by far, Earth's premier, renewable natural resource for sustainable fashion. Hemp grows quickly and requires no pesticides or herbicides. Its fiber makes for comfortable, durable, stylish and distinctive clothing and accessories. So go green and look great while doing it in DPC Hemp headwear.

TRAVELER | 864M

BEST SELLER



Brushed Twill Safari with 3" Brim | Mesh Sidewall and Leather Chin Cord
Sold by Color | 1/S, 4/M, 5/L, 2/XL
Loden Also Sold by Size M-XL | Khaki Also Sold by Size S-3X
Minimum 12 | 77JFLO



Loden



Khaki



ASPEN | 864WM-OLIVE



Garment Washed Twill Safari with 3" Brim | Mesh Sidewall and Leather Chin Cord
Olive | 1/S, 4/M, 5/L, 2/XL
Also Sold by Size M-XL
Minimum 12 | 77OMQO



ONSHORE | MC137-CAMEL



Hemp Safari with 2 1/4" Brim | Leather Band with Overlay
Camel | 2/M, 3/L, 1/XL
Also Sold by Size M-2X
Minimum 6 | 77JZK0





SAGUARO | MC68-PUTTY | PG 56

DPCTM

SAFARI | MC21-KAKI



Brushed Twill Aussie with 3" Brim | Side Snaps and Leather Chin Cord
Khaki | 1/S, 4/M, 5/L, 2/XL
Minimum 12 | 77ZEJ0



RONDAVEL | MC333



Pigment Dyed Cotton Safari with 2 1/2" Brim
Sold by Color | 3/M, 6/L, 3/XL
Minimum 12 | 98KDVO



Olive



Khaki

SAGUARO | MC68



Garment Washed Twill Outback with Shapeable 3" Brim | Faux Leather Band
Sold by Color | 2/M, 3/L, 1/XL
Bark, Khaki, Putty Also Sold by Size M-XL
Minimum 6 | 77XCW0



Charcoal



Khaki



Bark



Putty



WRANGLE | SPF4-CAMEL | PG 58

DPCTM



SOLARWEAVE[®] fabric is a sun-protective, brushed cotton material designed to provide lightweight, cool comfort with an ultraviolet protection factor of 40+. Hats bearing the SOLARWEAVE[®] hangtag are tested and proven to protect against harmful UV rays, even after 100 hours of accelerated exposure.

WRANGLE | SPF4



COOLMAX



Solarweave® Treated Cotton Safari with 3" Brim | Covered Underbrim with Mesh Sidewall and Chin Cord
Sold by Color | 1/S, 4/M, 5/L, 2/XL | COOLMAX® Sweatband
Oatmeal, Olive Also Sold by Size M-XL | Camel Also Sold by Size S-2X
Minimum 12 | 77ITR0



Camel



Oatmeal



Olive

BOONE | MC255-ASST



Weathered Canvas Outback with Shapeable 3" Brim | Faux Leather Chin Cord
8-Olive, 4-Brown | 4/M, 6/L, 2/XL
Minimum 12 | 77YRD0



Brown



Olive

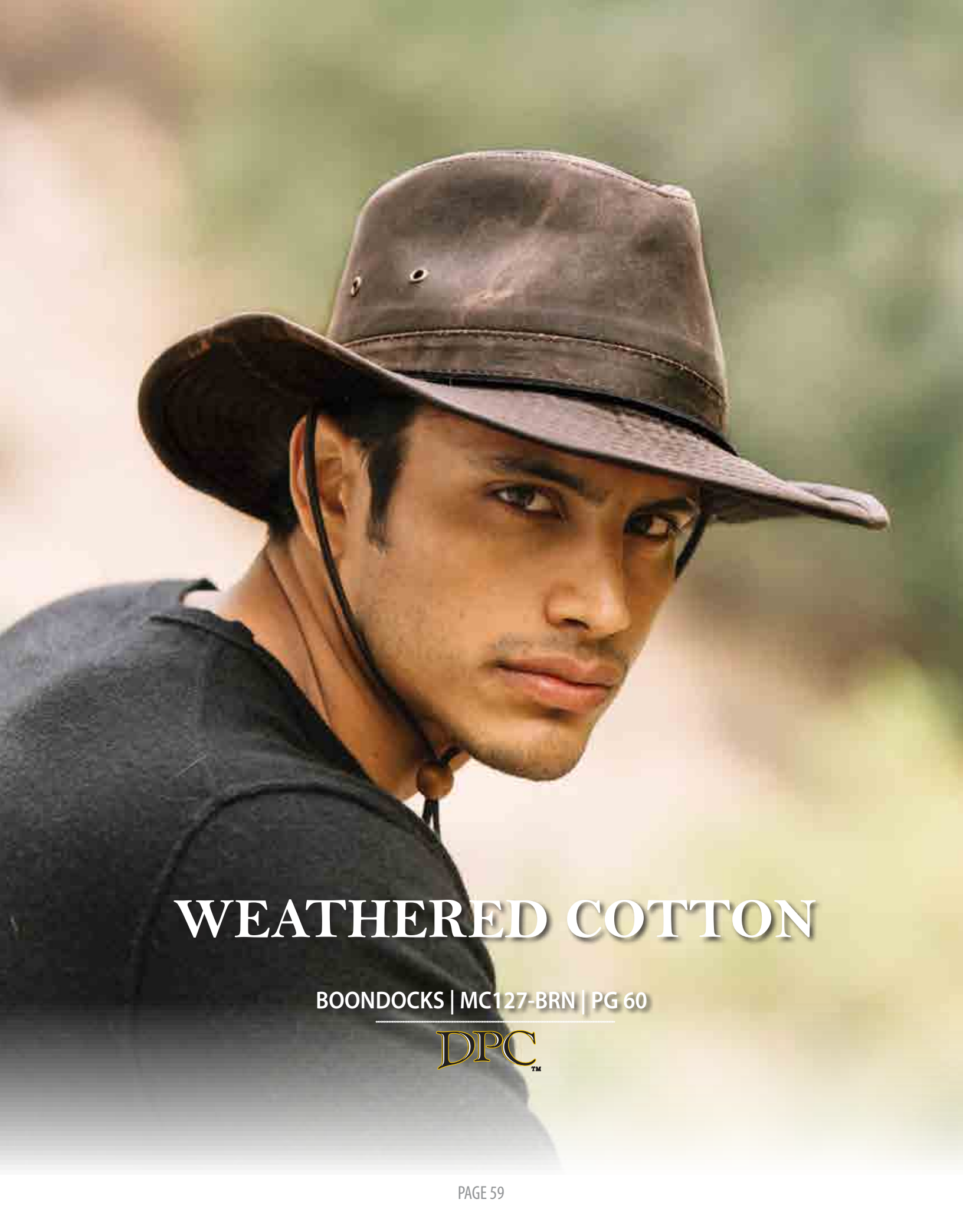


MOONBEAM | MC322-CAMO



Distressed Cotton Outback with Shapeable 3" Brim | Chin Cord
Camo | 3/M, 6/L, 3/XL
Minimum 12 | 98WUX0





WEATHERED COTTON

BOONDOCKS | MC127-BRN | PG 60

DPCTM

BOONDOCKS | MC127

BEST SELLER



Weathered Cotton Outback with Shapeable 2 3/4" Brim | Chin Cord
Sold by Color | 2/M, 3/L, 1/XL
Black, Charcoal Also Sold by Size M-XL | Brown Also Sold by Size S-3X
Minimum 6 | 77EOU0



Charcoal



Brown



Black

THE TREK | MC146-BRN



Weathered Cotton Safari with 2 1/4" Brim
Brown | 2/M, 3/L, 1/XL
Also Sold by Size M-XL
Minimum 6 | 77YMU0



HINTERLANDS | MC128-BRN



Weathered Cotton Safari with Bound 3" Brim | Leather Band, Chin Cord
Brown | 2/M, 3/L, 1/XL
Also Sold by Size M-XL
Minimum 6 | 77OTK0



SHADBUSH | MC152-BRN



Weathered Cotton Safari with 3" Brim | Mesh Sidewall and Chin Cord
Brown | 2/M, 3/L, 1/XL
Also Sold by Size M-2X
Minimum 6 | 77GGZ0



AMERICAN HOLLY | MC169-BRN



Weathered Cotton Cadet
Brown | 2-S/M, 4-L/XL
Minimum 6 | 77XJA0



GROMMET | MC235



Weathered Cotton Ivy
Sold by Color | 2-S/M, 4-L/XL
Brown Also Sold by Size S/M, L/XL
Minimum 6 | 77EPQ0



Charcoal



Black



Brown

WOODLAND | MC265-BRN



Weathered Cotton Boonie with 3" Brim | Mesh Grommets with Chin Cord and Adjustable Fit Toggle
Brown | 1/M, 3/L, 2/XL
Minimum 6 | 77OEP0



DUSK | MC376-BRN

NEW



Weathered Cotton Aussie with Dimensional 3 1/2" Brim | Chin Cord and Crown Tip Pocket
Brown | 1/M, 3/L, 2/XL
Minimum 6 | 77NZN0



MERCURY | MC388-BRN

NEW

Weathered Cotton Ivy
Brown | 2-S/M, 4-L/XL
Minimum 6 | 77JGH0



BILLY CAN | MC254-BRN



Weathered Cotton Aussie with 3" Brim | Side Snaps and Leather Chin Cord
Brown | 2/M, 3/L, 1/XL
Minimum 6 | 77RSA0



CEDAR | BC210



Unstructured Weathered Cotton Baseball Cap | Antique T-Slide
Sold by Color | One Size Fits Most
Minimum 6 | 77UZP0



New Color
Navy



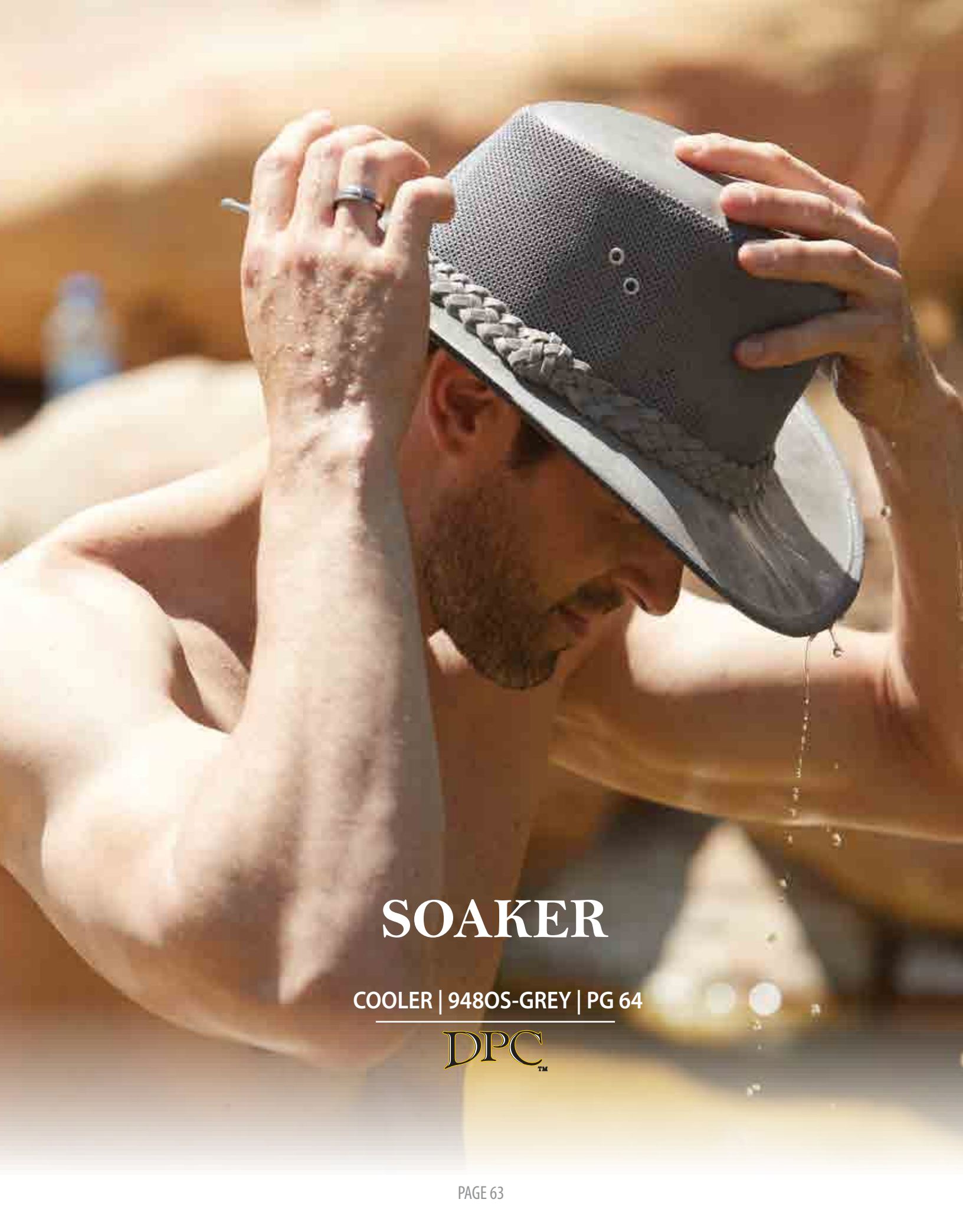
Charcoal



Black



Brown



SOAKER

COOLER | 9480S-GREY | PG 64

DPCTM

COOLER | 948OS



Soaker Aussie with 2 3/4" Brim | Mesh Sidewall
Sold by Color | 2-S/M, 4-L/XL | Elasticized Sweatband
Also Sold by Size S/M, L/XL, 2X
Minimum 6 | 53PDE0



Natural



Tan



Grey

SEABREEZE | 949OS



Soaker Aussie with 2 3/4" Brim | Mesh Sidewall
Sold by Color | 2-S/M, 4-L/XL | Elasticized Sweatband
Also Sold by Size S/M, L/XL
Minimum 6 | 53KQB0



Natural



Tan



UMBRA | MC359-CHAR | PG 67

DPC™

ULLSWATER | BC136



COOLMAX



Unstructured Supplex® Nylon Baseball Cap | EasyTape® Backstrap and Contrast Sandwich Peak
 3-Black, 3-Khaki, 3-Navy, 3-Olive | One Size Fits Most | COOLMAX® Sweatband
 Black, Charcoal, Grey, Khaki Also Sold by Color
 Minimum 12 | 77RHL0

BY COLOR



Charcoal



Black



Grey



Khaki

ASSORTED



Black



Olive



Navy



Khaki

DRY FLY | MC12



COOLMAX

Supplex® Nylon Fishing Cap | Chin Cord and Removable Sun Shield
 Sold by Color | One Size Fits Most | COOLMAX® Sweatband
 Minimum 12 | 77YLJ0



Khaki



New Color
Fossil



SUPPLEX® is an advanced nylon fabric. It is engineered to combine the soft, supple touch of cotton with the strength, durability and performance advantages of nylon. Clothing made from Supplex® stays new-looking longer. It will never fuzz or pill. That means your headwear will retain its great shape and vibrant color through sun, surf and repeated launderings

TOPWATER LURE | MC10-KAKI



COOLMAX



Supplex® Nylon Camp Hat with 3" Brim | Side Snaps with Mesh Sidewall and Chin Cord
Khaki | 3/M, 6/L, 3/XL | COOLMAX® Sweatband
Minimum 12 | 77HUA0



AUGER | MC117-FOSSIL



COOLMAX



Supplex® Nylon Boonie with 3 1/4" Brim | Chin Cord and Sun Shield
Fossil | 4-S/M, 8-L/XL | COOLMAX® Sweatband
Minimum 12 | 77OXG0



UMBRA | MC359



COOLMAX

Supplex® Nylon Fishing Cap with 3 3/4" Peak | Fold Away Sun Shield
with Keeper Clip Strap and Adjustable Fit Toggle
Sold by Color | 3/M, 6/L, 3/XL | COOLMAX® Sweatband
Minimum 12 | 77NNG0



Charcoal

Fossil

EXCAVATOR | MC13



COOLMAX



Supplex® Nylon Fishing Cap with 3 3/8" Peak | Sun Shield and Adjustable Fit Toggle
Sold by Color | One Size Fits Most | COOLMAX® Sweatband
Minimum 12 | 77QHU0



Fossil



(Back)



Khaki



Charcoal



Grey

BASIN | MC62



Supplex® Nylon Safari with Bound 3" Brim | Mesh Sidewall and Chin Cord
 Sold by Color | 1/S, 4/M, 5/L, 2/XL | COOLMAX® Sweatband
 Charcoal, Fossil, Grey, Khaki Also Sold by Size M-XL | Fossil Also Sold by Size 2X
 Minimum 12 | 77QME0



Grey



Charcoal



Fossil



Khaki



Olive

JETTY | MC288



Supplex® Nylon Boonie with Dimensional 3 1/2" Brim | Floatable Brim and Adjustable Fit Toggle
 Sold by Color | 2-S/M, 4-L/XL | COOLMAX® Sweatband
 Fossil, Grey, Khaki, White Also Sold by Size S/M, L/XL | White Also Sold by Size 2X
 Minimum 6 | 77MNY0



White



Fossil



Khaki



Grey (Back)

PALMERA | MC296-FOSSIL



Supplex® Nylon Safari with Bound 3 1/4" Brim | Palm Tape Band, Mesh Sidewall and Chin Cord
 Fossil | 1/M, 3/L, 2/XL | COOLMAX® Sweatband
 Minimum 6 | 77HWK0



WILDLIFE | MC297-FOSSIL



Supplex® Nylon Safari with Bound 3 1/4" Brim | Turtle Tape Band, Mesh Sidewall and Chin Cord
 Fossil | 1/M, 3/L, 2/XL | COOLMAX® Sweatband
 Minimum 6 | 77DTJ0





TRAILER | MC2-FOSSIL | PG 71

DPC™

EQUINOX | MC380-OLIVE



Supplex® Nylon Boonie with Bound 4 1/2" Brim | Floatable Brim and Plastic Snap Closure
 Olive | 3/M, 6/L, 3/XL | COOLMAX® Sweatband
 Minimum 12 | 77WDD0

I Float



(Back)

GALE | MC381



Supplex® Nylon Baseball Cap with 2 3/4" Peak | Fold Away Sun Shield and Zip Pocket
 Sold by Color | 2/M, 6/L, 4/XL | COOLMAX® Sweatband
 Minimum 12 | 77EDY0



Fossil

Khaki

EVERGREEN | MC1TT



Supplex® Nylon Boonie with Bound 3" Brim | Chin Cord and Adjustable Fit Toggle
 Sold by Color | 3/M, 6/L, 3/XL | COOLMAX® Sweatband
 Minimum 12 | 77EHN0



Khaki



Charcoal

EVERGREEN | MC1



Supplex® Nylon Boonie with 3 1/4" Brim | Covered Underbrim with Chin Cord and Adjustable Fit Toggle
 Sold by Color | 1/S, 4/M, 5/L, 2/XL | COOLMAX® Sweatband
 Grey, Khaki Also Sold by Size M-XL | Khaki Also Sold by Size 2X
 Minimum 12 | 77BUW0



Charcoal



Fossil



Khaki



Grey (Back)



Ivory



Olive

FREESTANDING | MC30-KAKI



Supplex® Nylon Boonie with 4 3/4" Brim | Mesh Lining and Chin Cord
Khaki | 3/M, 6/L, 3/XL | COOLMAX® Sweatband
Minimum 12 | 77FLJ0



TRAILER | MC2TT



Supplex® Nylon Boonie with Bound 3" Brim | Chin Cord and Adjustable Fit Toggle
Sold by Color | 3/M, 6/L, 3/XL | COOLMAX® Sweatband
Minimum 12 | 77AZE0



Olive



Khaki



TRAILER | MC2



Supplex® Nylon Boonie with 3" Brim | Covered Underbrim with Chin Cord and Adjustable Fit Toggle
Sold by Color | 1/S, 4/M, 5/L, 2/XL | COOLMAX® Sweatband
Charcoal, Fossil, Khaki Also Sold by Size M-XL | Khaki Also Sold by Size 2X
Minimum 12 | 77TLPO



Charcoal



Grey



Khaki



Fossil





BUHR | MC357-ASST | PG 73

DPCTM

REEL | BH212-ASST



Microfiber Boonie with 2 3/4" Brim | Chin Cord with Floatable Brim and Adjustable Fit Toggle
4-Blue, 4-Grey, 4-Royal | 4-S/M, 8-L/XL
Minimum 12 | 09TXG0



Royal



Grey



Blue

FLOATER | V239-ASST

Microfiber Visor with 3" Peak | EasyTape® Backstrap
4-Blue, 4-Charcoal, 4-Royal | One Size Fits Most
Minimum 12 | 09ZVK0



Royal



Charcoal



Blue

BUHR | MC357-ASST



Supplex® Nylon Boonie with 3" Brim | Mesh Lining with Chin Cord and Adjustable Fit Toggle
6-Grey, 6-Khaki | 2/M, 6/L, 4/XL | COOLMAX® Sweatband
Minimum 12 | 77VT10



Grey



Khaki

WAVE | MC383-ASST

NEW



Nylon Boonie with 3" Brim | Mesh Sidewall with Chin Cord and Adjustable Fit Toggle
6-Grey, 6-Khaki | 2/M, 6/L, 4/XL | COOLMAX® Sweatband
Minimum 12 | 77NAF0



Grey



Khaki



RICANE | MC384-ASST

NEW



Camo Cotton Boonie with 2 3/4" Brim | Chin Cord
6-Grey, 6-Navy | 3/M, 6/L, 3/XL
Minimum 12 | 98VIM0



Grey



Navy



TRAWLING | MC385-ASST

NEW



Camo Cotton Flap Cap with 3 3/4" Peak | Adjustable Fit Toggle and Keeper Clip Strap
6-Grey, 6-Navy | 4-S/M, 8-L/XL
Minimum 12 | 98YJJ0



Grey



Navy

HAIL | MC382OS



Mesh Covered Polyester Boonie with Dimensional 3 1/2" Brim | Chin Cord
Sold by Color | 2-S/M, 4-L/XL
Minimum 6 | 77XNLO



Grey



White

YAMUNA | MC50

Microfiber Fishing Cap with 4 1/2" Peak | Removable Sun Shield and Velcro® Backstrap
6-Khaki, 3-Grey, 3-White | One Size Fits Most
Khaki Also Sold by Color
Minimum 12 | 09MIQ0



Khaki



White



Grey

RHINE | MC368-ASST



Nylon Boonie with 2 3/4" Brim | Mesh Lining with Removable Chin Cord and Sun Shield
8-Khaki, 4-Olive | 3/M, 6/L, 3/XL
Minimum 12 | 98OUF0



Olive



Khaki

CANYON | MC362-ASST



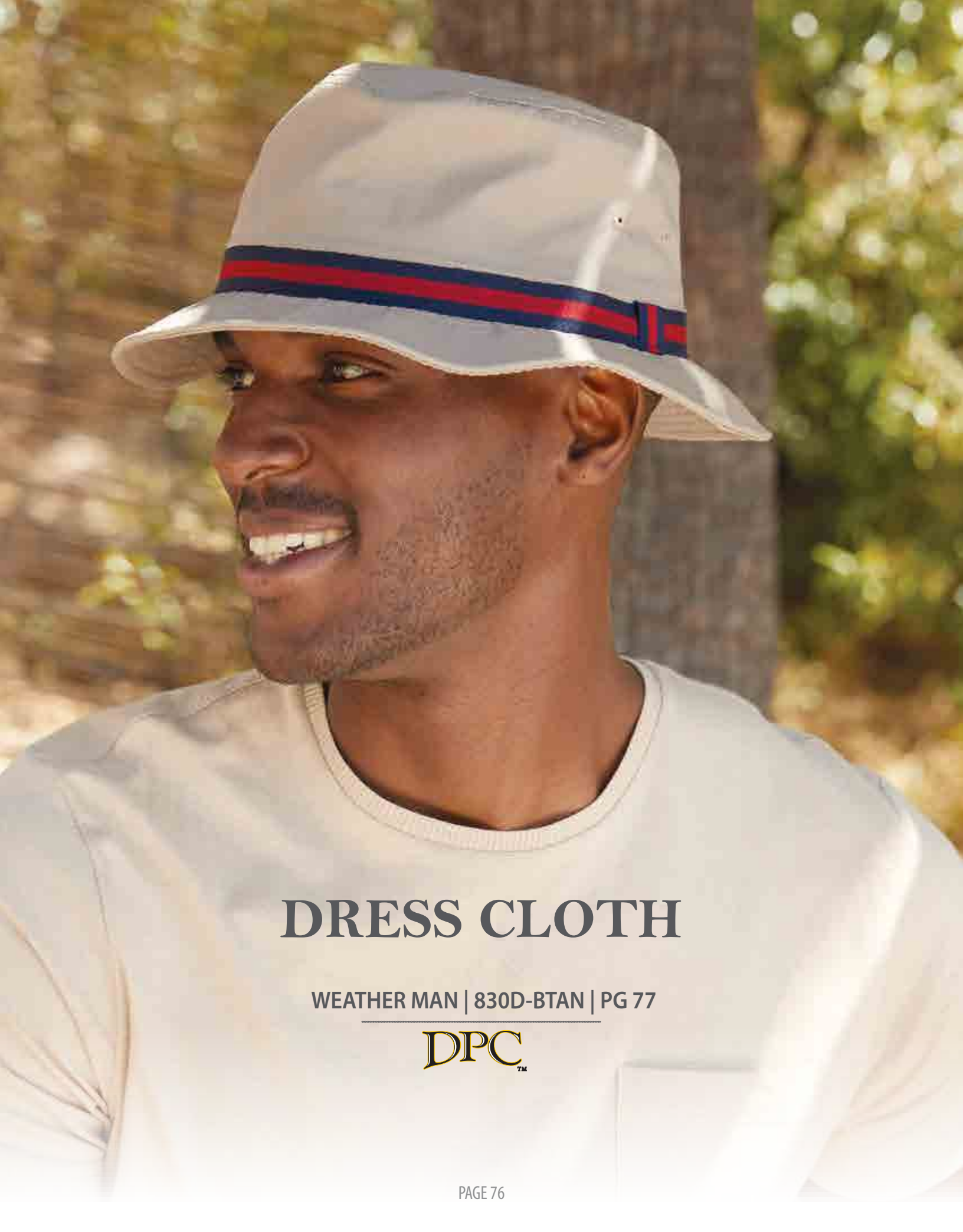
Nylon Aussie with Floatable 3" Brim | Chin Cord with Floatable Brim and Fold Away Sun Shield
6-Khaki, 6-Olive | 2/M, 6/L, 4/XL | Moisture Wicking Sweatband
Minimum 12 | 98UMD0



Khaki



Olive



DRESS CLOTH

WEATHER MAN | 830D-BTAN | PG 77

DPCTM

CAPPER | 2K

Cotton Newsboy | Snap Peak
Sold by Color | 1/S, 4/M, 5/L, 2/XL
White Also Sold by Size M-XL
Minimum 12 | 77XTX0



Black



Khaki



White

WEATHER MAN | 830D 

Water Repellent Poplin Bucket with 2" Brim | Grosgrain Band
Sold by Color | 1/S, 4/M, 5/L, 2/XL
Minimum 12 | 77IOB0



Navy



Charcoal



White



British Tan

PACKY | 830KS 

Packable Poplin Bucket with 2" Brim | Ribbon Band
4-Tan, 3-Lt. Blue, 3-White, 2-Lt. Grey | 1/S, 4/M, 5/L, 2/XL
Also Sold by Color
Minimum 12 | 77BYP0



Lt. Grey



White



Tan



Lt. Blue



SANTORINI | AEG100-NAVY | PG 80

⚓ **AEGEAN** ⚓

ATHENS • SAN FRANCISCO



ATHENS • SAN FRANCISCO

Aegean carefully crafts its caps with a quality found only among the original makers of the headwear, nestled in an old, European town on the outskirts of Athens. Aegean's fisherman caps and the wistful visions they invoke are not simply artifacts of the mind; they are some of most sought after hats in the western hemisphere. The hatmakers' craftsmanship reflects this knowledge, and their reputation precedes them.

Greek fisherman caps have represented the sailing world since the turn of the 20th century. Their instantly recognizable silhouette is the feature of sailors and of the everyday man and woman all around the world to this day. No matter the look, feel or style you choose, Aegean is a paragon of both comfort and style.

SANTORINI | AEG100  Made in Greece

Wool Blend Fisherman | Satin Lining
Sold by Color | Sold by Size 6 3/4 - 8

Minimum 1 | 171HHQ



Black



Grey



Navy



Brown

ANAPOS | AEG101  Made in Greece

Cotton Fisherman | Satin Lining
Sold by Color | Sold by Size 6 3/4 - 8

Minimum 1 | 1710MD



Navy




Denim



White



Black

PATRAS | AEG105-BLK  Made in Greece

Wool Blend Fiddler | Satin Lining
Black | Sold by Size 6 3/4 - 8

Minimum 1 | 171UQI



KASTORIA | AEG111  Made in Greece

Wool Blend Captain's Cap | Satin Lining
Sold by Color | Sold by Size 6 3/4 - 8

Minimum 1 | 171GBE



Navy



Black



BUCKETS & BOONIES

COMMO | BH152-ASST | PG 82

DPCTM

COMMO | BH152-ASST



Cotton Blend Boonie with 2 1/2" Brim | Web Band, Chin Cord
 6-Olive, 4-Black, 2-Blue | 6/M, 6/L
 Minimum 12 | 09AH10



Blue



Black



Olive

TRACKER | BH161-ASST



Rip Stop Cotton Boonie with 3" Brim | Side Snaps with Mesh Lining and Chin Cord
 3-Black, 3-Khaki, 3-Olive, 3-Putty | 6/M, 6/L
 Minimum 12 | 09VMN0



Olive



Putty



Black



Khaki

CRANK | BH210-ASST



Cotton Boonie with 3 1/4" Brim | Chin Cord
 4-Desert, 4-Digital, 4-Olive | 3/M, 6/L, 3/XL
 Minimum 12 | 09HDC0



Digital



Desert



Olive

POACH | BH71-ASST



Garment Washed Twill Bucket with 2 1/2" Brim | Mesh Lining with Contrast Underbrim and Chin Cord
2-Khaki/Black, 2-Khaki/Olive, 2-Putty/Black, 2-Putty/Olive, 1-Navy/Orange, 1-Orange/Navy, 1-Red/
Navy, 1-Yellow/Navy | 6/M, 6/L
Minimum 12 | 77DTZ0



Red/Navy



Yellow/Navy



Putty/Black



Khaki/Olive



Putty/Olive



Orange/Navy



Khaki/Black



Navy/Orange

POACH | BH71-BASC



Garment Washed Twill Bucket with 2 1/2" Brim | Mesh Lining with Contrast Underbrim and Chin Cord
6-Khaki/Black, 2-Navy/Orange, 2-Olive/Khaki, 2-Putty/Navy | 4/M, 4/L, 4/XL
Minimum 12 | 77DTZ0



Navy/Orange



Putty/Navy



Khaki/Black



Olive/Khaki

ANCHOR | BH56



Garment Washed Twill Boonie with 3" Brim | Contrast Underbrim and Chin Cord
 6-Khaki, 2-Navy, 2-Olive, 2-Putty | 4/M, 4/L, 4/XL
 Khaki Also Sold by Color
 Minimum 12 | 77SXN0



Navy



Putty



Olive



Khaki

ANCHOR | BH56-ASST



Garment Washed Twill Boonie with 3" Brim | Contrast Underbrim and Chin Cord
 4-Putty, 2-Khaki, 2-Olive, 1-Lt. Blue, 1-Orange, 1-Red, 1-Yellow | 6/M, 6/L
 Khaki Also Sold by Color
 Minimum 12 | 77SXN0



Red



Yellow



Putty



Lt. Blue



Orange



Olive



Khaki

COSTA RICA | BH159-ASST



Garment Washed Twill Boonie with 2 3/4" Brim | Turtle Tape Band, Chin Cord
 3-Khaki/Navy, 3-Khaki/Olive, 3-Navy/Khaki, 3-Putty/Olive | 6/M, 6/L
 Minimum 12 | 77KAS0



Navy/Khaki



Khaki/Navy



Khaki/Olive



Putty/Olive

BANDA | BH16-ASST



Pigment Dyed Twill Boonie with 3" Brim | Chin Cord
3-Navy, 3-Putty, 3-Sand, 3-Stone | 6/M, 6/L
Minimum 12 | 77BPU0



Navy



Putty



Stone



Sand

FORT MYERS | BH215-ASST



Microfiber Boonie with 3 1/4" Brim | Printed Band, Mesh Lining with Chin Cord and Mesh Eyelets
4-Khaki, 4-Navy, 4-Olive | 3/M, 6/L, 3/XL
Minimum 12 | 09YEU0



Olive



Navy



Khaki

FLIER | MC241-ASST



Microfiber Boonie with 3" Brim | Mesh Lining with Mesh Eyelets and Chin Cord
6-Khaki, 4-Olive, 2-Navy | 2/M, 6/L, 4/XL | Moisture Wicking Sweatband
Minimum 12 | 77SQX0



Navy



Khaki



Olive

ROADY | 835-ASST 

Pigment Dyed Twill Bucket with 2" Brim
 3-Navy, 3-Putty, 3-Sand, 3-Stone | 6-S/M, 6-L/XL
 Minimum 12 | 77BWG0



Navy



Putty



Sand



Stone

LURE | BH32-ASST

Pigment Dyed Twill Bucket with 2" Brim | Cargo Pocket
 3-Navy, 3-Putty, 3-Sand, 3-Stone | 6-S/M, 6-L/XL
 Minimum 12 | 77O110



Navy



Sand



Stone



Putty

BUOY | BH53-ASST 

Garment Washed Twill Bucket with 2" Brim
 2-Khaki/Navy, 2-Navy/Putty, 2-Olive/Navy, 2-Putty/Black, 1-Black/Putty, 1-Orange/Putty,
 1-Red/Navy, 1-Yellow/Navy | 6/M, 6/L
 Minimum 12 | 77OFB0



Red/Navy



Putty/Black



Khaki/Navy



Black/Putty



Navy/Putty



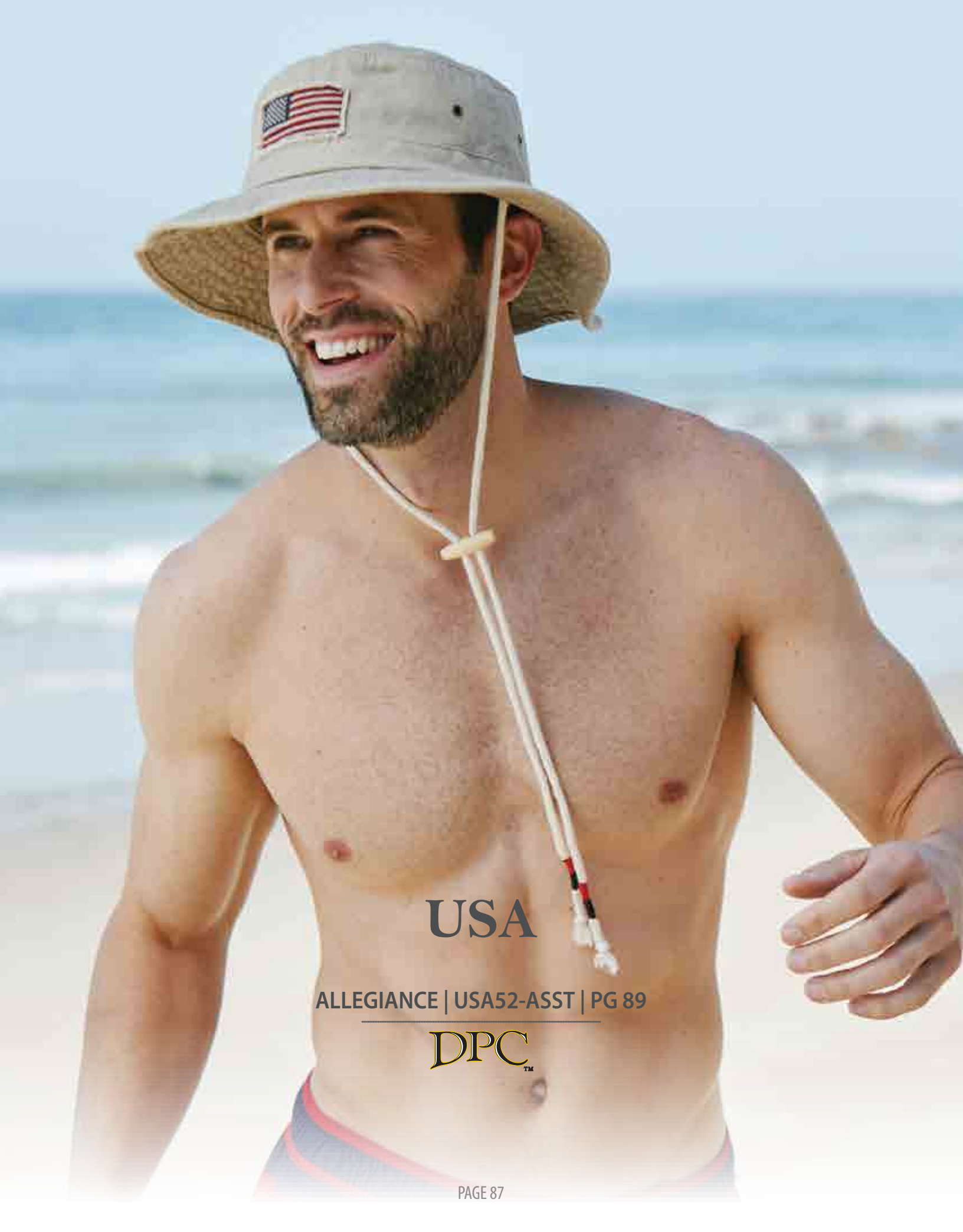
Yellow/Navy



Orange/Putty



Olive/Navy



USA

ALLEGIANCE | USA52-ASST | PG 89

DPCTM

NATIONALISM | USA34-ASST 

Unstructured Garment Washed Twill Baseball Cap | Antique T-Slide and Contrast Sandwich Peak
 4-Khaki, 4-Navy, 4-Putty | One Size Fits Most
 Minimum 12 | 09MPC0



Khaki



Putty
(Back)



Navy

STAR SPANGLED | USA60-ASST NEW

Structured Cotton Baseball Cap | Mesh Back and Plastic Snap Backstrap
 6-Navy, 6-White | One Size Fits Most
 Minimum 12 | 77PEM0



White



Navy

BANNER | USA31-ASST 

Structured Garment Washed Twill Baseball Cap | Antique T-Slide and Contrast Sandwich Peak
 4-Khaki/Navy, 4-Putty/Navy, 2-Navy/Putty, 2-Navy/Red | One Size Fits Most
 Minimum 12 | 77IYD0



Navy/Putty



Putty/Navy



Khaki/Navy



Navy/Red

SPIRIT | USA32-ASST 

Garment Washed Twill Visor with 2 3/4" Peak | EasyTape® Backstrap and Contrast Sandwich Peak
 3-Khaki/Navy, 3-Putty/Navy, 2-Navy/Putty, 2-Navy/Red, 2-Putty/Red | One Size Fits Most
 Minimum 12 | 09RHP0



Navy/Putty



Khaki/Navy



Navy/Red



Putty/Navy



Putty/Red

HOMAGE | USA51-ASST



Garment Washed Twill Bucket with 2 1/2" Brim
4-Khaki, 4-Navy, 4-Putty | 3/M, 6/L, 3/XL
Minimum 12 | 77SCQ0



Navy



Putty



Khaki

ALLEGIANCE | USA52-ASST



Garment Washed Twill Boonie with 3" Brim | Chin Cord
4-Khaki, 4-Navy, 4-Putty | 3/M, 6/L, 3/XL
Minimum 12 | 77XPF0



Navy



Putty



Khaki

SEA TO SHINING SEA | USA53-ASST



Unstructured Garment Washed Twill Baseball Cap | Antique T-Slide
4-Khaki, 4-Navy, 4-Olive | One Size Fits Most
Minimum 12 | 09UYE0



Navy



Khaki



Olive

FLAG WAVING | USA35-ASST



Unstructured Garment Washed Twill Baseball Cap | Frayed Peak and Antique T-Slide
6-Navy, 3-Khaki, 3-Putty | One Size Fits Most
Minimum 12 | 77HTX0



Navy



Putty



Khaki

DECLARATION | USA57-ASST



Unstructured Cotton Baseball Cap | Velcro® Backstrap
4-Navy, 4-Putty, 2-Black, 2-Khaki | One Size Fits Most
Minimum 12 | 77AYR0



Navy



Khaki



Black



Putty

LIBERTY | USA56-ASST



Unstructured Cotton Baseball Cap | Mesh Back and Plastic Snap Backstrap
4-Khaki, 4-Navy, 4-Putty | One Size Fits Most
Minimum 12 | 77NMJ0



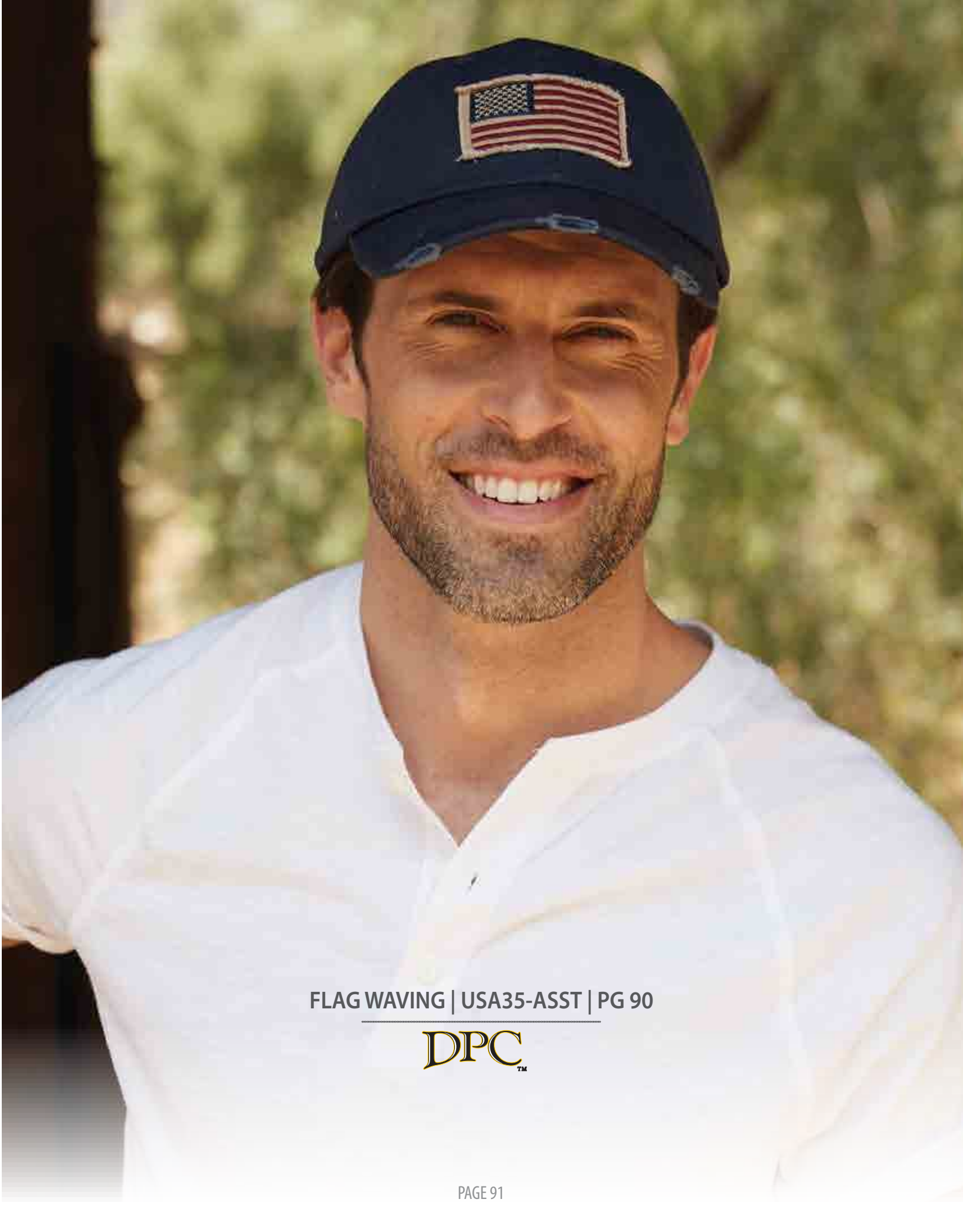
Khaki



Navy



Putty



FLAG WAVING | USA35-ASST | PG 90

DPCTM



CAPS & VISORS

NASSER | BC108-KAKI | PG 97

DPCTM

PONTOON | BC260-NAVY

Unstructured Garment Washed Twill Baseball Cap | Mesh Back and Antique T-Slide
Navy | One Size Fits Most
Minimum 12 | 77JKE0



AHOY | MC52

Twill Nautical Cap | Plastic Snap Backstrap
Sold by Color | One Size Fits Most
Minimum 12 | 77FGF0



Navy



White

BIRD DOG | BC331  **NEW COLORS**

Structured Cotton Baseball Cap | Mesh Back and Velcro® Backstrap
 Sold by Color | One Size Fits Most
 Minimum 6 | 77DAH0



Teal/White
(New Color)



Charcoal/Neon



Navy/White



Charcoal/White



Charcoal/Black



Charcoal/Blaze



Pink/White
(New Color)



Khaki/Brown
(New Color)



Cardinal/White
(New Color)



Charcoal/Aqua



Black/White

NAPO | V331 

Cotton Visor with 2 3/4" Peak | Mesh Back and Velcro® Backstrap
 Sold by Color | One Size Fits Most
 Minimum 6 | 77IRY0



Black/Neon



Charcoal/Neon



Charcoal/Black



Black/White



Navy/White



Charcoal/White

BIRD DOG | BC331-BASC 

Structured Cotton Baseball Cap | Mesh Back and Velcro® Backstrap
6-Charcoal/Black, 2-Black/White, 2-Charcoal/White, 2-Navy/White | One Size Fits Most
Also Sold by Color
Minimum 12 | 77DAH0



Charcoal/Black



Navy/White



Charcoal/White



Black/White

BIRD DOG | BC331-FASH 

Structured Cotton Baseball Cap | Mesh Back and Velcro® Backstrap
2-Black/Blaze, 2-Black/Neon, 2-Charcoal/Aqua, 2-Charcoal/Blaze, 2-Charcoal/Neon, 2-Charcoal/Pink | One Size Fits Most
Charcoal/Aqua, Charcoal/Blaze, Charcoal/Neon Also Sold by Color
Minimum 12 | 77DAH0



Black/Neon



Charcoal/Blaze



Charcoal/Neon



Charcoal/Aqua



Black/Blaze



Charcoal/Pink

SPRUCE | BC246TT 

Unstructured Cotton Baseball Cap | Mesh Back and Plastic Snap Backstrap
 3-Khaki, 3-Maroon, 3-Navy, 3-Olive | One Size Fits Most
 Also Sold by Color
 Minimum 12 | 08FVK0



SPRUCE | BC246 

Unstructured Cotton Baseball Cap | Mesh Back and Plastic Snap Backstrap
 2-Blue, 2-Khaki, 2-Navy, 2-Olive, 2-Orange, 2-Red | One Size Fits Most
 Black, Blue, Khaki, Navy, Olive, Putty, Red Also Sold by Color
 Minimum 12 | 08XRF0



BY COLOR



ASSORTED



NASSER | BC108  **NEW COLORS**

Unstructured Garment Washed Twill Baseball Cap | Antique T-Slide
Sold by Color | One Size Fits Most
Also Available in Solid and Two-Tone Assortments
Minimum 12 | 77UMPO



Teal
(New Color)



Black



Burnt Orange



Dk. Green



Fuchsia



Lt. Pink



Navy



Olive



Sage



Turquoise



White



Yellow



Khaki



Grey
(New Color)



Charcoal



Lt. Blue



Putty



Red

TWO-TONE ASSORTMENT



Navy/Khaki



Putty/Dk. Green



Putty/Khaki



Putty/Navy

ASSORTED



Black



Khaki



Navy



Olive



Putty



Lt. Blue



Red

LADOGA | BC118-ASST 

Unstructured Garment Washed Twill Baseball Cap | Contrast Sandwich Peak and EasyTape® Backstrap
2-Black/Putty, 2-Khaki/Olive, 2-Navy/Khaki, 2-Olive/Putty, 2-Putty/Black, 2-Putty/Navy | One Size Fits Most
Minimum 12 | 09UMW0



Olive/Putty



Putty/Black



Khaki/Olive



Black/Putty



Putty/Navy



Navy/Khaki

SIEGE | BC354-ASST NEW

Structured Camo Cotton Baseball Cap | Velcro® Backstrap
3-Grey, 3-Khaki, 3-Olive, 3-Tan | One Size Fits Most
Minimum 12 | 77NRI0



Grey



Khaki



Olive



Tan

ZULU | V256-ASST NEW

Camo Cotton Visor with 2 3/4" Peak | Velcro® Backstrap
3-Grey, 3-Khaki, 3-Olive, 3-Tan | One Size Fits Most
Minimum 12 | 77QYF0



Grey



Khaki



Olive



Tan

ELBRUS | BC195-ASST 

Unstructured Rip Stop Cotton Baseball Cap | Cargo Pocket and Velcro® Backstrap
3-Blue, 3-Khaki, 3-Olive, 3-Putty | 3-Khaki, 3-Navy, 3-Olive, 3-Putty
Minimum 12 | 09IBA0



Navy



Khaki



Putty



Olive

ISLANDER | BC166 

Structured Garment Washed Twill Baseball Cap | Antique T-Slide and Contrast Sandwich Peak
3-Black/Stone, 3-Stone/Navy, 2-Khaki/Black, 2-Navy/Stone, 2-Red/White | One Size Fits Most
Also Sold by Color
Minimum 12 | 08SGM0

BY COLOR



Stone/Navy



White/Khaki



Black/Stone



Red/White



Navy/Stone



Khaki/Black

ASSORTED



Stone/Navy



Black/Stone



Red/White



Navy/Stone



Khaki/Black

LUGANO | BC123-ASST 

Unstructured Garment Washed Twill Baseball Cap | EasyTape® Backstrap
3-Khaki, 3-Putty, 2-Navy, 2-Red, 2-Yellow | One Size Fits Most
Minimum 12 | 09ETD0



Red



Khaki



Yellow



Navy



Putty

BASSWOOD | BC202-BASC 

Garment Washed Twill Cadet | Distressed Peak and Velcro® Backstrap
3-Black, 3-Chocolate, 3-Khaki, 3-Olive | One Size Fits Most
Minimum 12 | 77RCV0



Chocolate



Khaki



Black



Olive

LAUNCHER | BC265 

Unstructured Cotton Baseball Cap | Weathered Cotton Peak and Antique T-Slide
3-Bronze, 3-Khaki, 3-Navy, 3-Olive | One Size Fits Most
Also Sold by Color
Minimum 12 | 77MFF0



Navy



Bronze



Olive



Khaki

OAK | BC350-ASST

Garment Washed Twill Cadet | Mesh Back and Velcro® Backstrap
3-Black, 3-Khaki, 3-Navy, 3-Olive | One Size Fits Most
Minimum 12 | 09SHF0



Navy



Khaki



Black



Olive

WOODSMAN | BC355-BLAZE NEW

Cotton Baseball Cap | Weathered Cotton Peak and Antique T-Slide
Blaze | One Size Fits Most
Minimum 12 | 77LTLO



BRAND | BC356 NEW

Pigment Dyed Twill Baseball Cap | Antique T-Slide
Sold by Color | One Size Fits Most
Minimum 12 | 77DBC0



Royal



Olive



Navy



Orange

LOCH NESS | BC351-ASST 

Perforated Polyester Baseball Cap | EasyTape® Backstrap
3-Black, 3-Charcoal, 3-Navy, 3-White | One Size Fits Most
Minimum 12 | 08PCL0



Charcoal



Navy



Black



White

CHAMPLAIN | V7 

Garment Washed Twill Visor with 2 3/4" Peak | Velcro® Backstrap
 2-Black, 2-Khaki, 2-Navy, 2-Olive, 2-Putty, 1-Dk.Green, 1-Red | One Size Fits Most
 Black, Khaki, Navy, Putty, White Also Sold by Color
 Minimum 12 | 77GFD0



Red



ASSORTED

Black

Khaki

Navy

Olive

Dk. Green

Putty

BY COLOR



Black

Khaki

Navy

Putty

White

CHAMPLAIN | V7-FASH 

Garment Washed Twill Visor with 2 3/4" Peak | Velcro® Backstrap
 3-Khaki, 3-Putty, 2-Black, 1-Gold, 1-Lt. Blue, 1-Orange, 1-Red | One Size Fits Most
 Minimum 12 | 77GFD0



Orange



Black

Gold

Red

Lt. Blue

Putty

Khaki

MAUI | V10-ASST 

Cotton Visor with 2 3/4" Peak | Velcro® Backstrap
 3-Blue, 3-Khaki, 3-Navy, 3-Red | One Size Fits Most
 Minimum 12 | 77AL10



Blue



Khaki



Red



Navy

TIDE POOL | V198-ASST 

Garment Washed Twill Visor with 2 3/4" Peak | EasyTape® Backstrap
 4-Khaki, 4-Putty, 2-Navy, 1-Orange, 1-Yellow | One Size Fits Most
 Minimum 12 | 09XHQ0



Orange



Khaki



Putty



Navy



Yellow

PECOS | V248-ASST

Nylon Visor with 3 1/4" Peak | Removable Terry Tab and Velcro® Backstrap
 3-Black, 3-White, 2-Charcoal, 2-Khaki, 2-Navy | One Size Fits Most
 Minimum 12 | 09NXC0



Charcoal



Navy



White



Black



Khaki

ST. CLAIR | V8-ASST 

Garment Washed Twill Visor with 2 3/4" Peak | Velcro® Backstrap and Contrast Sandwich Peak
 3-Olive/Khaki, 3-Stone/Navy, 2-Black/Khaki, 2-Burgundy/Navy, 2-Navy/Putty | One Size Fits Most
 Minimum 12 | 09EIL0



Burgundy/ Navy



Navy/ Putty



Olive/ Khaki



Stone/ Navy



Black/ Khaki



STRAW

RANGE | MS4330S-ASST | PG 107



COASTAL | MS177

BEST
SELLER

Matte Toyo Fedora with 1 1/2" Brim | Stripe Ribbon Band
Sold by Color | 6/M, 6/L
Minimum 12 | 98TSF0



Black



Sand



Natural

DICTY | MS248-ASST

Matte Toyo Fedora with 2" Brim | 3-Pleat Cotton Band
8-Brown, 4-Natural | 6/M, 6/L
Minimum 12 | 98ETZ0



Natural



Brown

WISEGUY | MS290

Paper Braid Fedora with 2" Brim | Ribbon Band with Web Overlay
Sold by Color | 3/M, 6/L, 3/XL
Minimum 12 | 98RTT0



Ivory



Natural

STRAPPER | MS382

BEST
SELLER

Matte Toyo Fedora with 1 3/4" Brim | Ribbon Band
Sold by Color | 3/M, 6/L, 3/XL
Minimum 12 | 98BKEO



Ivory



Black

SHEIK | MS383-ASST

Matte Toyo Fedora with 1 3/4" Brim | Ribbon Band
6-Ivory, 6-Natural | 4/M, 6/L, 2/XL
Minimum 12 | 98AUEO



Ivory



Natural

ACAPULCO | MS385-ASST

Matte Toyo Fedora with 1 3/4" Brim | 2-Pleat Cotton Band
6-Navy, 6-Olive | 4/M, 6/L, 2/XL
Minimum 12 | 53XXIO



Navy



Olive

BIG TIMER | MS386

Matte Toyo Fedora with 2" Brim | Striped Ribbon Band
Sold by Color | 3/M, 6/L, 3/XL
Minimum 12 | 103EPF



Black



Natural

RANGE | MS433OS-ASST

Toyo Fedora with Paper Braid 1 3/4" Brim | Striped Ribbon Band
3-Black, 3-Brown | 2-S/M, 4-L/XL | Elasticized Sweatband
Minimum 6 | HNZ012



Black



Brown

LODGE | MS435OS-ASST

Matte Toyo Fedora with 2" Brim | Striped Ribbon Band
6-Ivory, 6-Natural | 4-S/M, 8-L/XL | Elasticized Sweatband
Minimum 12 | 103YWE



Ivory



Natural

HYDRO | MS457-ASST NEW

Toyo Fedora with 2" Brim | Ribbon Band with Jute Overlay
6-Brown, 6-Natural | 3/M, 6/L, 3/XL
Minimum 12 | 103YPN



Brown



Natural

LUNAR | MS458-IVORY NEW

Matte Toyo Fedora with 2" Brim | Stripe Ribbon Band
Ivory | 1/M, 3/L, 2/XL
Minimum 6 | 103FFE



MONSOON | MS459-NAT NEW

Matte Toyo Fedora with 1 7/8" Brim | Stripe Ribbon Band
Natural | 1/M, 3/L, 2/XL
Minimum 6 | 98FSG0





MATCH STICK | MS434-NAT | PG 111





CAMPFIRE | MS437-NAT | PG 111



TRAPPER | MS294 BEST SELLER NEW COLOR

Matte Toyo Safari with 2" Brim | 3-Pleat Cotton Band
Sold by Color | 3/M, 6/L, 3/XL
Minimum 12 | 147DEV



Black
New Color



Ivory



Tea

CACTUS | MS439-IVORY

Matte Toyo Safari with 3" Brim | 3-Pleat Cotton Band
Ivory | 3/M, 6/L, 3/XL
Minimum 12 | 147RUK



MATCH STICK | MS434

Burnt Paper Braid Fedora with 1 3/4" Brim | Faux Suede Band with Overlay
Sold by Color | 2/M, 3/L, 1/XL
Minimum 6 | 60MDC0



Tea



Ivory

CAMPFIRE | MS437



Burnt Paper Braid Safari with 2 1/2" Brim | Faux Suede Band with Overlay
Sold by Color | 1/M, 3/L, 2/XL
Minimum 6 | 60IVH0



Natural



Tea

ROADIE | MS405-NAT

Lightweight Reeded Fabric Safari with 2 3/4" Brim | Faux Leather Band, Buckle
Natural | 3/M, 6/L, 3/XL
Minimum 12 | HJM011



SUMTER | MS407-IVORY

Lightweight Reeded Fabric Fedora with 2" Brim | Grosgrain Band
Ivory | 3/M, 6/L, 3/XL
Minimum 12 | PPU009



BERKELEY | MS408-IVORY

Lightweight Reeded Fabric Safari with 3" Brim | Grosgrain Band
Ivory | 3/M, 6/L, 3/XL
Minimum 12 | AFH009



HELMET | MS414

BEST
SELLER

Twisted Toyo Pith Helmet with 2 1/2" Brim | Faux Leather Band, Velcro® Closure
Sold by Color | One Size Fits Most
Minimum 1 | 53AKM0



Tan



Tan/White

GRASSLAND | MS359OS-ASST

Seagrass Safari with 3" Brim | 2-Pleat Cotton Band
8-Navy, 4-Khaki | 4-S/M, 8-L/XL | Elasticized Sweatband
Minimum 12 | 159BQV



Navy



Khaki

SUNDOWNER | MS361OS-ASST

Matte Toyo Safari with 2 1/4" Brim | Web Band with Faux Leather Overlay
8-Natural, 4-Brown | 4-S/M, 8-L/XL | Elasticized Sweatband
Minimum 12 | 103XQB



Natural



Brown



LATITIDES | MS456OS-NAT | PG 115

DPCTM

LATITUDE | MS456OS-NAT NEW

Matte Toyo Safari with 3" Brim | Ribbon Band with Overlay, Covered Underbrim and Tip
Natural | 2-S/M, 4-L/XL | Elasticized Sweatband
Minimum 6 | 53MBR0



RIDGE | 916-NAT

Twisted Seagrass Ivy
Natural | 1/S, 4/M, 5/L, 2/XL
Minimum 12 | 103PCQ



JUTE | MS438-TEA



Paper Braid Safari with 2 1/2" Brim | Jute Band with Braided Overlay
Tea | 1/M, 3/L, 2/XL
Minimum 6 | ODB014



OZONE | MS460-NAT NEW

Matte Toyo Safari with 2 1/2" Brim | Faux Leather Band
Natural | 1/M, 3/L, 2/XL
Minimum 6 | 98RCT0





MT. MOMMA | MS4420S-TOAST | PG 117

DPCTM

MT. MOMMA | MS442OS-TOAST

Braided Palm Fiber Lifeguard with 4" Brim | Chin Cord
Toast | One Size Fits Most | Elasticized Sweatband
Minimum 12 | 71RQJ0



PALMETTO | MS443OS-ASST

Braided Palm Fiber Fedora with 2 5/8" Brim | Ribbon Band
6-Solid, 6-Striped (Will Vary) | One Size Fits Most | Elasticized Sweatband
Minimum 12 | 71URB0



Solid



Striped

BUCKHORN | MS444OS-TOAST

Braided Palm Fiber Outback with 3 3/4" Brim | Chin Cord
Toast | One Size Fits Most | Elasticized Sweatband
Minimum 12 | 71KKO0



OVERCAST | MS461OS-NAT

NEW



PACKABLE

Packable Braided Palm Fiber Lifeguard with 5" Brim | Chin Cord
Natural | One Size Fits Most | Elasticized Sweatband
Minimum 12 | 71EK00



TIDELAND | MS462OS-NAT

NEW

PACKABLE

Packable Braided Palm Fiber Safari with 5" Brim | Chin Cord
Natural | One Size Fits Most | Elasticized Sweatband
Minimum 12 | 71CVD0



PALM BRAID | MS445OS-TOAST

Braided Palm Fiber Lifeguard with 4 3/4" Brim | Chin Cord
Toast | One Size Fits Most | Elasticized Sweatband
Minimum 12 | 71KSC0





SEAVIEW | 3180S-NAT | PG 122

DPCTM

THERMAL | MS464OS-COCO NEW

Palm Fiber Lifeguard with Bound 5" Brim | Covered Underbrim and Chin Cord
 Coco | One Size Fits Most | Elasticized Sweatband
 Minimum 12 | 71XKX0



TWISTER | MS465OS-NAT NEW

Seagrass Lifeguard with Bound 4 1/4" Brim | Covered Underbrim and Chin Cord
 Natural | 4-S/M, 8-L/XL | Elasticized Sweatband
 Minimum 12 | 185UQI



UPDRAFT | MS466OS-ASST NEW

Shanghai Rush Straw Lifeguard with Bound 4 1/4" Brim | Covered Underbrim and Chin Cord
 3-Black, 3-Denim | 2-S/M, 4-L/XL | Elasticized Sweatband
 Minimum 6 | 166MQH



Black



Denim



TYPHOON | MS467OS-ASST NEW

Rush Straw Lifeguard with Bound 4 1/4" Brim | Covered Underbrim and Chin Cord
 6-Navy, 6-Yellow | 4-S/M, 8-L/XL | Elasticized Sweatband
 Minimum 12 | 166STE



Yellow



Navy



VAPOR | MS468OS-ASST NEW

Rush Straw Lifeguard with Bound 4" Brim | Covered Underbrim and Chin Cord
4-Black, 4-Denim, 4-Navy | 4-S/M, 8-L/XL | Elasticized Sweatband
Minimum 12 | 166KME



Denim



Black



Navy

PIPA | MS469OS-ASST NEW

Rush Straw Lifeguard with Bound 5 1/4" Brim | Covered Underbrim and Chin Cord
6-Blue, 6-Navy | 4-S/M, 8-L/XL | Elasticized Sweatband
Minimum 12 | 166VAT



Blue



Navy

VISTULA | 388-ASST

BEST
SELLER

Rush Straw Safari with 4" Brim | 2-Pleat Cotton Band, Chin Cord
 12-Navy, 6-Dk. Green, 6-Khaki | 3/S, 9/M, 9/L, 3/XL
 Also Sold by Size M-XL
 Minimum 24 | 25OMQ0



Navy



Khaki



Dk. Green

SEAVIEW | 318OS-NAT

Rough Braid Raffia Lifeguard with 5" Brim | Faux Leather Band, Chin Cord
 Natural | 2-S/M, 4-L/XL | Elasticized Sweatband
 Also Sold by Size S/M, L/XL
 Minimum 6 | 193WYW



WALKER | 388C-NAT

Rush Straw Safari with 4" Brim | Faux Leather Band, Kangaroo Badge
 Natural | 2/S, 10/M, 10/L, 2/XL
 Minimum 24 | 25YIM0



OKEECHOBEE | 399S-ASST

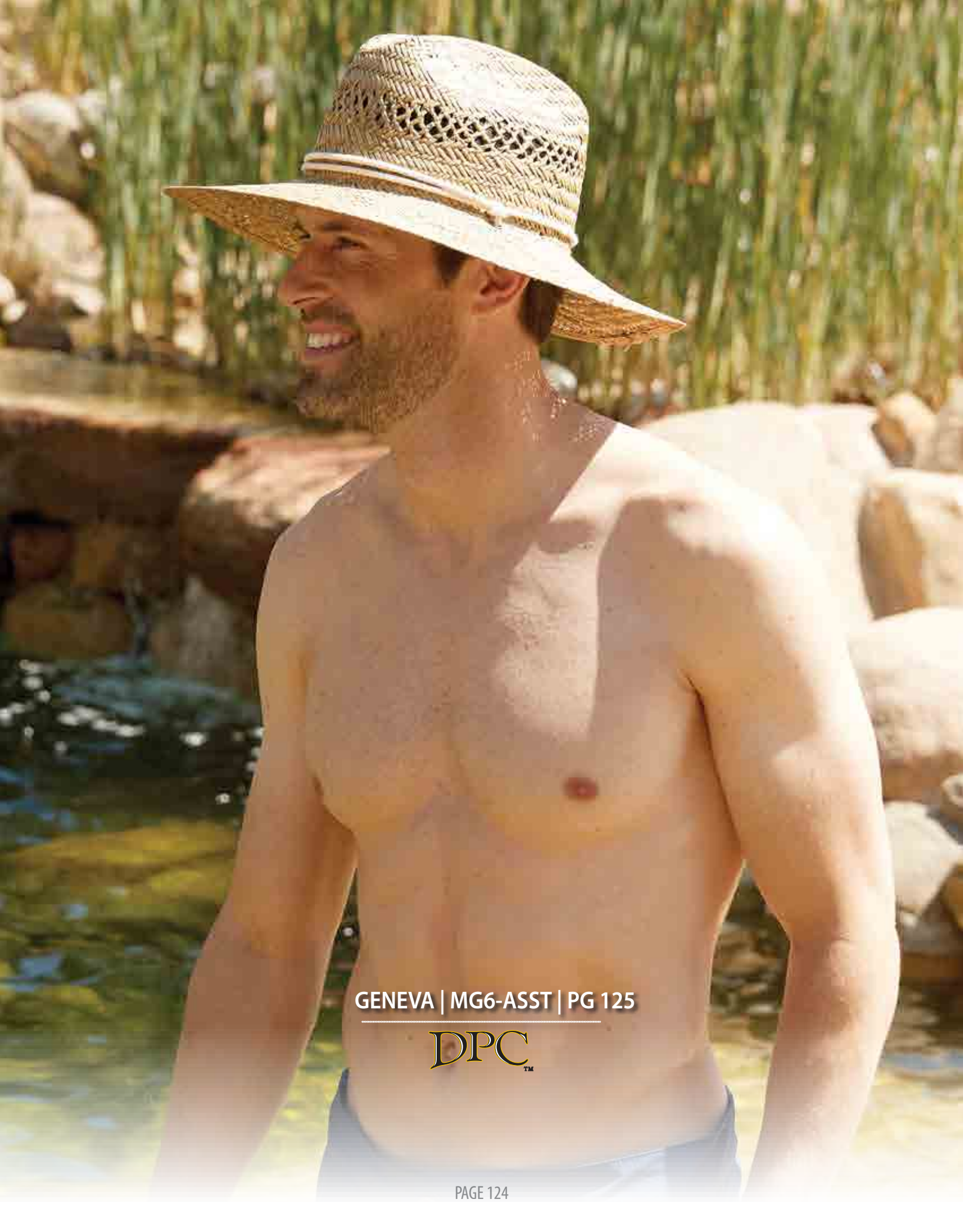
Shanghai Rush Straw Safari with 4" Brim | 2-Pleat Cotton Band, Chin Cord
 Assorted Trims (Will Vary) | 2/S, 10/M, 10/L, 2/XL
 Minimum 24 | 131ULV





VISTULA | 388-ASST | PG 122

DPCTM



GENEVA | MG6-ASST | PG 125

DPCTM

GENEVA | MG6-ASST

BEST SELLER

Rush Straw Lifeguard with 4 1/4" Brim | Chin Cord
6-Black, 6-Natural, 6-Olive, 6-Taupe | 2/S, 10/M, 10/L, 2/XL | Elasticized Sweatband
Minimum 24 | 25GAH0



Taupe



Black



Natural



Olive



SUNLIT | MS267OS-ASST

Palm Fiber Lifeguard with 3 1/2" Brim | Chin Cord
6-Coco, 6-Natural | One Size Fits Most | Elasticized Sweatband
Minimum 12 | 71EXY0



Natural



Coco



SUNSCREEN | MS268OS-ASST

Palm Fiber Lifeguard with Bound 5" Brim | Chin Cord
10-Coco, 2-Natural | One Size Fits Most | Elasticized Sweatband
Minimum 12 | 71BV10



Natural



Coco



SAND DOLLAR | MS335OS-NAT

Shanghai Rush Straw Lifeguard with 5" Brim | Chin Cord
 Natural | 4-S/M, 8-L/XL | Elasticized Sweatband
 Minimum 12 | 190NOR



HORIZON | MS364OS-NAT

Rush Straw Safari with Bound 3 1/4" Brim | Covered Underbrim and Tip
 and Chin Cord
 Natural | 4-S/M, 8-L/XL | Elasticized Sweatband
 Minimum 12 | 95UUS0



SEA GLASS | MS337OS-ASST

Rush Straw Lifeguard with 4 1/4" Brim | Jute Band, Branding and Chin Cord
 6-Fish, 6-Palm | 4-S/M, 8-L/XL | Elasticized Sweatband
 Minimum 12 | 250DH0



Fish



Palm

JINGOIST | MS401OS-NAT

Rush Straw Lifeguard with Bound 4" Brim | Covered Underbrim
 and Chin Cord
 Natural | 4-S/M, 8-L/XL | Elasticized Sweatband
 Minimum 12 | 166LIN



PATRIOT | MS402OS-NAT

Rush Straw Lifeguard with 4 1/2" Brim | Bandana Band, Chin Cord
 Natural | 4-S/M, 8-L/XL | Elasticized Sweatband
 Minimum 12 | 53UGM0





TWISTER | MS465OS-NAT | PG 121

DPCTM

TILLAGE | MS472OS-ASST NEW

Rush Straw Sun Hat with Bound 5" Brim | Chin Cord
6-Blue, 6-Tea | 4-S/M, 8-L/XL | Elasticized Sweatband
Minimum 12 | 166UPX



Blue



Tea



VANE | MS471OS-NAT NEW

Rush Straw Safari with Bound 3 1/4" Brim | Covered Underbrim and Chin Cord
Natural | 2-S/M, 4-L/XL | Elasticized Sweatband
Minimum 6 | 166BIJ



SNAPPER | MS86-ASST

Rush Straw Lifeguard with 4 1/4" Brim | Turtle Tape Band, Chin Cord
6-Black, 6-Navy | 3/M, 6/L, 3/XL
Minimum 12 | 25ALS0



Black



Navy

PINE | 383938-ASST

BEST SELLER

RUSH STRAW VALUE
PACK ONLY \$5.50

Rush Straw Assorted with 3" Brim | Faux Leather Band
Natural | 6/S, 12/M, 12/L, 6/XL
Minimum 36 | 25T110

ALL 3 SHAPES
IN ONE PACK



MURRAY | 383-NAT

Rush Straw Gambler with 3" Brim | Faux Leather Band, Kangaroo Badge
Natural | 2/S, 10/M, 10/L, 2/XL
Also Sold by Size S-XL
Minimum 24 | 25ROC0



OUTBACKER | 938-NAT

Rush Straw Safari with 3" Brim | Faux Leather Band, Kangaroo Badge
Natural | 2/S, 10/M, 10/L, 2/XL
Minimum 24 | 25UX00



RIO | 384C-NAT

BEST SELLER

Rush Straw Outback with 3" Brim | Faux Leather Band, Kangaroo Badge and Chin Cord
Natural | 2/S, 10/M, 10/L, 2/XL
Minimum 24 | 25MOE0



RUFF | MS304OS-NAT

Rush Straw Safari with 3" Brim | Web Band with Ribbon Overlay, Golf Ornament
Natural | 4-S/M, 8-L/XL | Elasticized Sweatband
Minimum 12 | 95KRH0



CARIB | MS303OS-NAT

Rush Straw Safari with 3" Brim | Palm Tape Band
Natural | 4-S/M, 8-L/XL | Elasticized Sweatband
Minimum 12 | 25PZU0



ACES | MS336OS-ASST

Rush Straw Gambler with 3" Brim | Jute Band, Branding
6-Palm, 4-Fish, 2-Turtle | 4-S/M, 8-L/XL | Elasticized Sweatband
Minimum 12 | 25EKV0



Palm



Fish



Turtle

RANCHER | 476-NAT

Rush Straw Western with Shapeable 3 1/2" Brim | Faux Leather Band
Natural | 2/S, 10/M, 10/L, 2/XL
Minimum 24 | 25HYPO



BUTTE | MS58OS-NAT

Rush Straw Western with Shapeable 3" Brim | Web Band
Natural | 4-S/M, 8-L/XL | Elasticized Sweatband
Minimum 12 | 25TTU0



CORRALES | MS57OS-NAT

BEST
SELLER

Rush Straw Outback with Shapeable 3" Brim | Faux Leather Band, Chin Cord
Natural | 4-S/M, 8-L/XL | Elasticized Sweatband
Minimum 12 | 25YNR0



DRIFTER | 384-NAT

Rush Straw Outback with 3" Brim | Print Band, Tails
Natural | 2/S, 10/M, 10/L, 2/XL
Minimum 24 | 25UDJ0



CHIP | MS87OS-NAT

Rush Straw Gambler with 3" Brim | Faux Leather Band, Golf Ornament
Natural | 4-S/M, 8-L/XL | Elasticized Sweatband
Minimum 12 | 25BGT0





WESTERN

AMARILLO | MS4170S-ASST | PG 133

DPCTM

AMARILLO | MS417OS-ASST

Bangkok Toyo Western with Shapeable 3 1/2" Brim | Web Band
3-Black, 3-Tea | 2-S/M, 4-L/XL | Elasticized Sweatband
Minimum 6 | 190SIB



Black



Tea
(Back)

BRYCE | MR209OS-TEA

Raffia Western with Shapeable 3 1/2" Brim | Faux Leather Chin Cord
Tea | 4-S/M, 8-L/XL | Elasticized Sweatband
Minimum 12 | 159EQW



BANDWAGON | MS26OS-NAT

Seagrass Western with Shapeable 3 1/2" Brim | Braided Faux Leather Band
Natural | 6-S/M, 6-L/XL | Elasticized Sweatband
Minimum 12 | 53AUJ0



WESTERNER | MS313OS-NAT

Rush Straw Outback with Shapeable 3" Brim | Chin Cord
Natural | 4-S/M, 8-L/XL | Elasticized Sweatband
Minimum 12 | 25TDA0



SEASCAPE | MS367OS-NAT

Rush Straw Outback with Shapeable 3 1/2" Brim | Web Band
Natural | 4-S/M, 8-L/XL | Elasticized Sweatband
Minimum 12 | 159MQB



BREWER | MS392OS-NAT

Seagrass Outback with Shapeable 3 1/2" Brim | Braided Faux Leather Band
Natural | 4-S/M, 8-L/XL | Elasticized Sweatband
Minimum 12 | 159AZR



BOOTHBAY | MS394OS-ASST



Bangkok Toyo Outback with Shapeable 3 1/2" Brim | Faux Leather Band with Braided Overlay, Tails
 3-Brown, 3-Natural | 2-S/M, 4-L/XL | Elasticized COOLMAX® Sweatband
 Minimum 6 | 190EQN



Natural



Brown

RANCHO | MS46OS-NAT

Seagrass Western with Shapeable 3 1/2" Brim | Concho and Chin Cord
 Natural | 6-S/M, 6-L/XL | Elasticized Sweatband
 Minimum 12 | 53GCF0



TRAIL RIDE | MS27OS-NAT



Seagrass Outback with Shapeable 3 1/2" Brim | Concho and Chin Cord
 Natural | 6-S/M, 6-L/XL | Elasticized Sweatband
 Minimum 12 | 53UWL0



LOUDON | ST11OS

5 BU Toyo Western with Shapeable 3 1/2" Brim | Concho and Chin Cord
 Sold by Color | 3-S/M, 3-L/XL | Elasticized Sweatband
 Black, Natural, Tobacco Also Sold by Size S/M, L/XL
 Minimum 6 | 53HTH0



Mud



Natural



Tobacco



Chocolate



Black

CARIBO | MS393OS-BURNT

Toyo Outback with Shapeable 3 3/4" Brim | Faux Leather Band, Concho and Faux Leather Chin Cord
Burnt | 4-S/M, 8-L/XL | Elasticized Sweatband
Minimum 12 | 190KTP



AMERICA | MS422OS-TEA

Rush Straw Outback with Shapeable 3 1/2" Brim | Faux Leather Band, Conchos
Tea | 4-S/M, 8-L/XL | Elasticized Sweatband
Minimum 12 | 190KTL



MURICA | MS419OS-ASST

Matte Toyo Outback with Shapeable 3 1/2" Brim
3-Brown, 3-Navy | 2-S/M, 4-L/XL | Elasticized Sweatband
Minimum 6 | 190JVZ



Navy



Brown

STARS & STRIPES | MS421OS-ASST

Matte Toyo Outback with Shapeable 3 1/2" Brim | Faux Leather Band
3-Brown, 3-Tan | 2-S/M, 4-L/XL | Elasticized Sweatband
Minimum 6 | 190NPW



Brown



Tan

The background of the advertisement is a composite image. On the left, there is a faded, yellow-toned map of the Americas with labels for 'Washington', 'Charleston', 'Bahama Islands', and 'Galapagos'. On the right, there is a photograph of a tropical landscape with green trees and a clear blue sky. The title 'INDIANA JONES' is written in a large, bold, stylized font with a yellow-to-orange gradient and a black outline, slanted upwards. Below it, the words 'HEADWEAR COLLECTION' are written in a smaller, black, italicized sans-serif font.

INDIANA JONES™

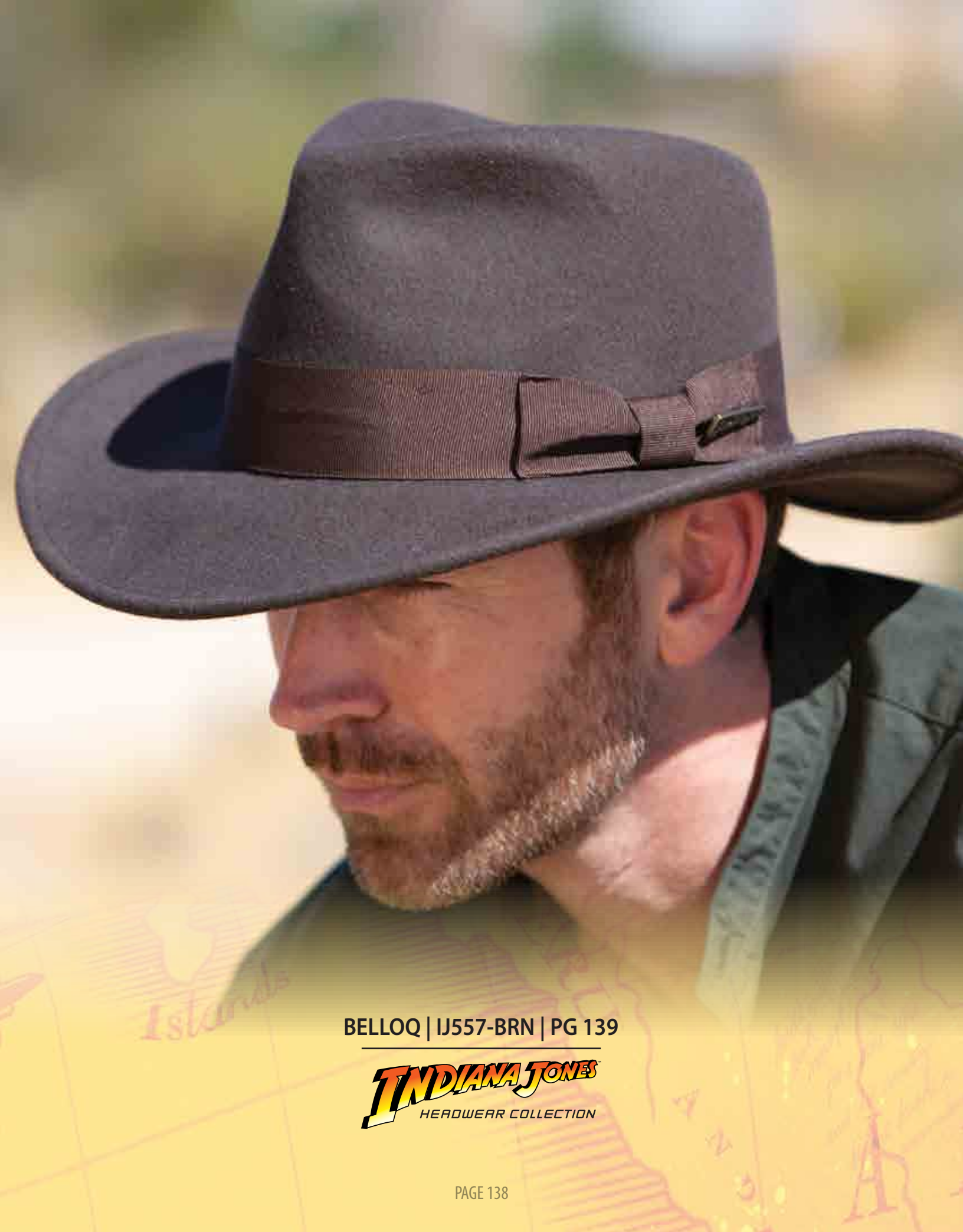
HEADWEAR COLLECTION

BELLOQ | IJ557-BRN | PG 139

Whether you've seen the movies or not, you know the number one defining characteristic of Indiana Jones is his hat. Rustic but dashing, it's an apt companion for the professor-turned-adventurer. Inspired by the movies, the man, myth, and legend, these Indiana Jones hats will take your taste for adventure up a notch.

Authentic wool felt fedoras, outbacks, safaris and ball caps can be your great escape. Pick up a new Indiana Jones hat today and ride off into the sunset like you've always wanted. There's never been a better time to up your excitement.





BELLOQ | IJ557-BRN | PG 139

TINDIANA JONES
HEADWEAR COLLECTION

BELLOQ | IJ557-BRN

Crushable, Water Repellent Wool Felt Fedora with 3" Brim | Grosgrain Band
Brown | Sold by Size S-XL
Minimum 1 | FXH026



BARRANCA | IJ554-BRN

Fur Felt Fedora with Raw Edge 2 1/2" Brim | Grosgrain Band, Satin Lining
Brown | Sold by Size M-2X | Lambskin Sweatband
Minimum 1 | 36LOE0



KATANGA | IJ559-BRN

Crushable Wool Felt Fedora with 3" Brim | Grosgrain Band
Brown | 1/S, 2/M, 2/L, 1/XL
Also Sold by Size S-XL
Minimum 6 | VNB023



RAIDER | 551B-BRN

Crushable Wool Felt Fedora with Bound 2 1/4" Brim | Grosgrain Band
Brown | Sold by Size S-XL (Kid's Sizes)
Minimum 1 | DZW025



RAVENWOOD | 552-BRN

Crushable, Water Repellent Wool Felt Safari with 2 1/2" Brim | Grosgrain Band
Brown | Sold by Size M-XL
Minimum 1 | MYG025



LAST CRUSADE | 555-BRN

Crushable, Water Repellent Wool Felt Outback with 3" Brim |
Faux Leather Band, Tails
Brown | Sold by Size S-3X
Minimum 1 | QLZ027



SATIPO | IJ551-BRN

Wool Felt Fedora with Raw Edge 2 1/2" Brim | Grosgrain Band, Satin Lining
Brown | Sold by Size S-2X | Leather Sweatband
Minimum 1 | 36KEX0



CRYSTAL SKULL | IJ21-DKBRN



Weathered Cotton Fedora with 2 1/2" Brim
Dk. Brown | Sold by Size S-XL
Minimum 1 | 77DFE0



DR. WALTON | 860BB-KAKI

Twill Cotton Safari with 3" Brim | Grosgrain Band
Khaki | Sold by Size M-XL
Minimum 1 | 77JVA0



WILLIE | IJ12-ASST

Structured Cotton Baseball Cap | EasyTape® Backstrap
4-Black, 4-Camel, 4-Khaki | One Size Fits Most
Minimum 12 | 08BBL0



Khaki



Camel



Black



GUNNER | MO25-CNTRY | PG 145

Mossy Oak has always been passionate about providing camouflage for those with an inclination for the outdoors. Not only do the Mossy Oak patterns offer concealment, they also represent a true love of and affinity for being outside. One does not need to be an avid hunter, though, to enjoy the trappings of a well-worn piece of camouflage.

Wear your Mossy Oak hat with you whether you're in the forest or out for an evening stroll. The earth-colored designs will blend seamlessly with any surrounding you choose, just like they're supposed to. Next time you're looking for a new piece of headwear, consider one decorated in Mossy Oak camouflage. It's the perfect style for the outdoors, whether it's gardening, hunting, conserving or simply sharing the beauty of nature with those around you.

Official Licensed Product of Haas Outdoors, Inc., West Point, MS 39773. Distributed by Dorfman Pacific, Inc., Stockton, CA 95206.
Mossy Oak is a trademark used under license from Haas Outdoors, Inc. by Dorfman Pacific, Inc.



WINCHESTER | MO16-CNTRY

Rush Straw Safari with Bound 4" Brim
 Mossy Oak Break-Up Country® | 2-S/M, 4-L/XL | Elasticized Sweatband
 Minimum 6 | 98RUP0



POINTER | MO18-CNTRY



Garment Washed Cotton Bucket with Bound 3" Brim | Chin Cord
 Mossy Oak Break-Up Country® | 1/S, 4/M, 5/L, 2/XL
 Minimum 12 | 98VJB0



CHESAPEAKE BAY | MO19-CNTRY



Twill Bucket with 3" Brim | Chin Cord
 Mossy Oak Break-Up Country® | 1/S, 4/M, 5/L, 2/XL
 Minimum 12 | 98WFA0



SETTER | MO22



Pigment Dyed Twill Boonie with 2 7/8" Brim | Covered Underbrim with Chin Cord and Adjustable Fit Toggle
 Sold by Color Mossy Oak Break-Up Country®, Mossy Oak Break-Up Infinity®
 1/S, 4/M, 5/L, 2/XL
 Minimum 12 | 98UFD0



Country



Break-Up

RETRIEVER | MO24



Twill Safari with Bound 3 1/4" Brim | Mesh Sidewall and Chin Cord
Sold by Color Mossy Oak New Break-Up®, Mossy Oak Break-Up Country® | 2/M, 3/L, 1/XL
Minimum 6 | 98YXL0



Country



Break-Up

GUNNER | MO25-CNTRY



Twill Outback with Shapeable 3" Brim
Mossy Oak Break-Up Country® | 2/M, 3/L, 1/XL
Minimum 6 | 98MPU0



RIDGEBACK | MO2-CNTRY



Weathered Cotton Outback with Shapeable 3" Brim | Chin Cord
Mossy Oak Break-Up Country® | 2/M, 3/L, 1/XL | Camo Sweatband
Minimum 6 | 98KVT0



RACKS & DISPLAY STANDS

WOOD HAT RACK | RACK30-NAT

24 Peg Wood Hat Rack with Mirror | Holds 24-48 Hats
Natural | 68.9"H x 27.6"W



WOOD HAT RACK | RACK30-DARK

24 Peg Wood Hat Rack with Mirror | Holds 24-48 Hats
Dark | 68.9"H x 27.6"W



DON'T FORGET TO SELECT YOUR SCALA OR DORFMAN PACIFIC LOGO MIRROR FOR RACK30 AND/OR RACK30-DARK!

REVOLVING RACK | RACK41-SLVR

Metal Revolving Hat Rack with Clips | Holds 120 Hats
Silver | 73"H x 36"B, 24" Rings **MIRROR SOLD SEPARATELY**



SILVER MIRROR | RACK41-MIRROR

Mirror for RACK41
Silver

BLACK REVOLVING RACK | RACK8-BLK

Metal Revolving Hat Rack | Holds 24-48 Hats
Black | 64.2"H x 25.2"W



WOOD DP MIRROR | MIRRLT-DP

Dorfman Pacific Logo Mirror
Natural



WOOD DP MIRROR | MIRRDK-DP

Dorfman Pacific Logo Mirror
DARK



WOOD SCALA MIRROR | MIRRLT-SCALA

Dorfman Pacific Logo Mirror
Natural



WOOD SCALA MIRROR | MIRRDK-SCALA

Dorfman Pacific Logo Mirror
DARK



HAT RACK | RACK45-SLVR

Metal 2-Sided Hat Rack with Casters | Holds 48
Silver | 72"H x 28"W



BOUTIQUE RACK | RACK27-BLK

Metal Hat Rack with Textured Plates and Casters | Holds 25 Hats
Black | 71.5"H x 26"B

TEXTURED HAT PLATES



ADJUSTABLE RACK | RACK46-BLK

Metal Hat Rack with Adjustable Pegs | Holds
48-60 Hats
Black | 72"H x 48"W



DUAL RACK | RACK9-BLK

Metal Hat Rack with Two Kinds of Display
Options | Holds 40 Hats
Black | 75"H x 22"W



CARDBOARD DISPLAY | SPRINGDISPLAY

Cardboard Display | Holds 72 Hats
White | 57"H x 17.5"W x 17"D



HAT STAND | DPSTAND-BLK

Plastic Hat Stand
Black | 9"L x 7"W | Minimum 12



WIRE DISPLAY | DISPSET-DARK

Wire Display with Wood Base | Set of 3
Black | Tall: 14"H, Short: 9"H (Two Short Included)



WICKER DISPLAY | DISPHEAD-NAT

Wicker Display Heads | Set of 3
Natural | Tall: 13.5"H, Medium: 12.5"H, Short: 11.5"H



VISOR STAND | RACK38-CLEAR

Acrylic Visor Stand | Holds 16 Visors
Clear | 54cm H x 15cm W x 19.5cm² B



POSTERS: 22"W X 28"H



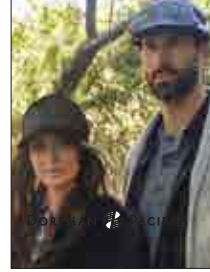
POPSCALAWSS20
DORFMAN PACIFIC
SPRING-SUMMER



POPSCALAMSS20
DORFMAN PACIFIC
SPRING-SUMMER



POPSCALAFWF19
DORFMAN PACIFIC
FALL-WINTER



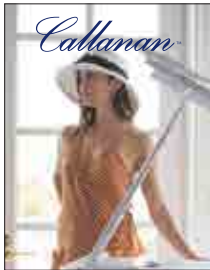
POPDPCFW19
DORFMAN PACIFIC
FALL-WINTER



POPSCAFELFW19
DORFMAN PACIFIC
FALL-WINTER



POPWAG19
DORFMAN PACIFIC
SPRING-SUMMER



POPWSSCN20
CALLANAN
SPRING-SUMMER



POPWFCN19
CALLANAN
FALL-WINTER



POPCSW20
CAPPELLI STRAWORLD INC.
SPRING-SUMMER

COUNTER CARDS: 8"W X 10.25"H



POPCSCALAWSS20
DORFMAN PACIFIC
SPRING-SUMMER



POPCSCALAMSS20
DORFMAN PACIFIC
SPRING-SUMMER



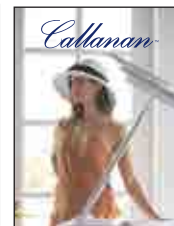
POPCSCALAFW19
DORFMAN PACIFIC
FALL-WINTER



POPCDPCFW19
DORFMAN PACIFIC
SPRING-SUMMER



POPCFCN19
CALLANAN
FALL-WINTER



POPCCN20
CALLANAN
SPRING-SUMMER

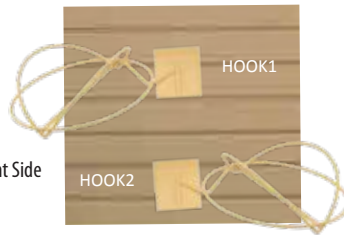


POPCWUPF10
DORFMAN PACIFIC
SPRING-SUMMER

POINT OF PURCHASE
ORDER ONLINE OR
CALL US AT 800 367-3626

HOOK1 | HOOK1-TAN

Metal Slat Wall Hook Features the Left Side of the Hat
Tan



HOOK2 | HOOK2-TAN

Metal Slat Wall Hook Features the Right Side of the Hat
Tan

SCALA HAT RING | HATRING1-CLEAR

Scala Logo Hat Ring | Set of 3
Clear | 22cm



COUNTER MIRROR | MIRR1-NAT

Wooden Counter Mirror
Natural | 12"H x 12"W



HAT BRUSH | 983

100% Natural Horse Hair Bristle Hat Brush
Sold by Color



HAT BOX | BOX1-WHT

Individual Hat Box
White | 15"L x 13.5"W x 6"D



REDUCER TAPE | 990

Hat Size Reducer Tape
25-ft Roll



TWILL SWEATBAND | 991

Twill Replacement Sweatband, Reduces Hats by One Size
Sold by Color | Minimum 3 |



HAT STRETCHER | HATJACK-NAT

Wooden Hat Stretcher
Sold by Size Medium (7 1/8"-7 1/2") and Large (7 1/2" and Up)



TERRY SWEATBAND | 991T

Terry Cloth Replacement Sweatband, Reduces Hats by One Size
Sold by Color | Minimum 3 |



OUR MISSION

For so long, people thought Dorfman was just about selling hats. But really, we're about our hat family. You see a hat is just an accessory, but our community is fostered by the artisans that hand make our hats, local shops that display our creations, and our customers' stories who wear them with distinction. This is coupled with our relentless commitment to service and quality instilled by our founder, Jack Dorfman. Fashion trends are in a constant state of motion, but happy retail partners and valued customers are a constant for us.

OUR ENVIRONMENT

OUR COMMITMENT TO OUR FUTURE

We believe it is our responsibility to conserve resources to lower our carbon footprint. Dorfman Pacific's headquarters operates the greenest distribution center in headwear industry, and one of the greenest in the United States. Skylights, motion sensors, light fixtures, reflective white roofing, recycled boxes, electric hand dryers, non-polluting electric fork lifts and carts, high efficiency air conditioning units and electric commuter cars are some the ways that Dorfman Pacific is reducing consumption and conserving resources.

TERMS:

F.O.B. Stockton warehouse. Approved credit application required for all Net 30 and C.O.D. company check orders. All other orders shipped prepaid credit card. American Express, Discover, Master Card and VISA accepted. All orders are subject to shipping and handling charges. Past due accounts are charged a monthly 1 1/2% service charge.

MINIMUM ORDER:

\$200 – a \$25 small order charge will be added to orders less than \$200.

DAMAGES AND RETURNS:

All claims for damaged cartons and carton shortages must be filed with carrier within 10 days after receipt of merchandise. All inner box shortages must be reported to Dorfman Pacific within 10 days. All returns must be prepaid and authorized by the home office. Call 800-367-3626 for authorization. Our RA# is required on all cartons shipped back for credit. Returns may be subject to a 10% restocking charge, \$25 minimum charge. Credit will be issued upon receipt and inspection of merchandise only. E-mail any questions to custservice@dorfman-pacific.com.

WILL CALLS:

Allow one working day for processing. All credit approved orders shipped within 24 hours. 24-hour toll-free fax service: 866 247-4624; Voice messaging: 800 367-3626.



VISIT US ON THE WEB. FOLLOW US ON FACEBOOK AND TWITTER.

For the latest information on new products, promotions, trade shows, showrooms, press releases and much more.

www.dorfman-pacific.com



or by e-mail:

custservice@dorfman-pacific.com



For a complete look all our new spring styles, request a catalog. Order online at www.dorfman-pacific.com or call 1-800-367-3626 to request this or any of our other Dorfman Pacific catalogs

SHIPMENT NOTIFICATION:

Receive a shipment notification via fax or e-mail which provides the following information regarding your order: Purchase order number; Carrier used (UPS, FedEx Overnight, Yellow Freight, etc.); Total number of cartons shipped; Tracking numbers for each of the cartons (parcel shipments only); Listing of styles and quantities per carton; Our 800 number in case of a problem or question regarding the shipment.

To enroll in this service, you or your sales representative need only provide your e-mail address or fax number to any of our customer service representatives. We will do the rest. Allow 3 business days to be added to this program. In the event that you wish to stop this notification, please contact Customer Service at 800-367-3626 ext. 1265

FedEx SPECIAL EXPRESS SERVICE*

Dorfman Pacific will expedite your order via FedEx 2-day service to destinations east of Colorado for 75% off the published air rate. This service is available for FILL-IN orders only valued between \$250 - \$1,000. This is a great way to increase both sales and inventory turns. For example, place an order on Tuesday and have your best sellers restocked for weekend selling. Contact your Customer Service Rep for details.

*Offer subject to change without prior notice. Available to open accounts only. Orders must be placed by 2:00 EST. Not available on C.O.D. Limited to one order per week.

TRADE SHOWS

FOR A COMPLETE LIST OF SHOWS PLEASE VISIT OUR WEBSITE AT WWW.DORFMAN-PACIFIC.COM

SEATTLE GIFT SHOW

Seattle, WA - January, August

MAGIC

Las Vegas, NV - February, August

LAS VEGAS MARKET

Las Vegas, NV - January, July

STYLE MAX

Chicago, IL - Jan., Apr., Aug., Oct.

DALLAS APPAREL & ACCESSORIES MARKET

Dallas, TX - Jan., Mar., May, Jun., Aug., Sept., Oct.

DENVER APPAREL & ACCESSORIES MARKET

Denver, CO - Feb., Apr., Jun., Aug., Sept., Oct.

NEW YORK MARKET WEEK

NY, NY - Jan., Mar., May, Aug., Nov.

ACCESSORIES THE SHOW

New York, NY - Jan., May, Aug.

NY NOW

New York, NY - February, August

SURF EXPO

Orlando, FL - January, September

ATLANTA APPAREL & ACCESSORIES MARKET

Atlanta, GA - Jan., Feb., Apr., Jun., Aug., Sept., Oct.

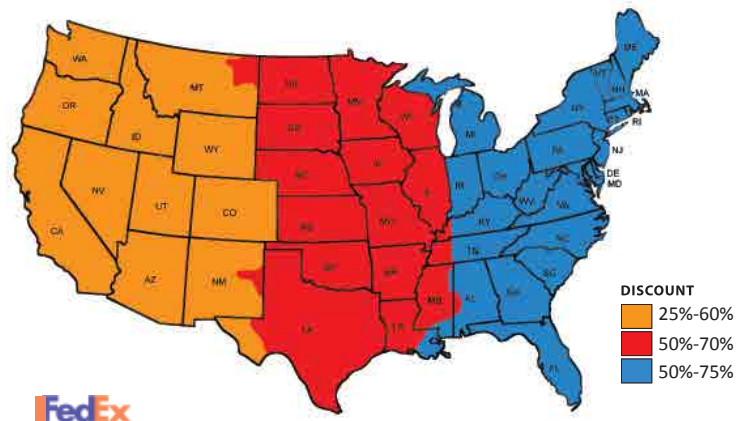
PGA MERCHANDISE SHOW

Orlando, FL - January

SUBSIDIZED FREIGHT MAP

OUR NEW FREIGHT PROGRAM

The Dorfman Pacific discount freight program featuring [FedEx service](#). With our FedEx freight program you will automatically receive a **new significant freight reduction** off the FedEx published rate.



INDEX

PRICES AND COLOR ASSORTMENT SUBJECT TO CHANGE • ALL STYLES ARE ONE SIZE UNLESS OTHERWISE INDICATED

STYLE NO	NAME	PAGE	STYLE NO	NAME	PAGE	STYLE NO	NAME	PAGE	STYLE NO	NAME	PAGE
2K	CAPPER	77	BC210	CEDAR	62	MC12	DRY FLY	66	MG6-ASST	GENEVA	125
318OS-NAT	SEAVIEW	122	BC246	SPRUCE	96	MC127	BOONDOCKS	60	MO16-CNTRY	WINCHESTER	144
319-NAT	RAVENELL	16	BC246TT	SPRUCE	96	MC128-BRN	HINTERLANDS	60	MO18-CNTRY	POINTER	144
321OS-NAT	DRIVER	16	BC260-NAVY	PONTOON	93	MC13	EXCAVATOR	67	MO19-CNTRY	CHESAPEAKE BAY	144
350GOS-NAT	CLUB	37	BC265	LAUNCHER	100	MC137-CAMEL	ONSHORE	54	MO2-CNTRY	RIDGEBACK	145
383-NAT	MURRAY	129	BC331	BIRD DOG	94	MC146-BRN	THE TREK	60	MO22	SETTER	144
383938-ASST	PINE	129	BC331-BASC	BIRD DOG	95	MC152-BRN	SHADBUSH	61	MO24	RETRIEVER	145
384-NAT	DRIFTER	131	BC331-FASH	BIRD DOG	95	MC169-BRN	AMERICAN HOLLY	61	MO25-CNTRY	GUNNER	145
384C-NAT	RIO	129	BC350-ASST	OAK	100	MC1TT	EVERGREEN	70	MR112OS-NAT	PUERTO	15
388-ASST	VISTULA	122	BC351-ASST	LOCH NESS	101	MC2	TRAILER	71	MR113OS-NAT	SOL	15
388C-NAT	WALKER	122	BC354-ASST	SIEGE	98	MC21-KAKI	SAFARI	56	MR192-BURNT	ODESSA	20
399S-ASST	OKEECHOBEE	122	BC355-BLAZE	WOODSMAN	101	MC235	GROMMET	61	MR194OS-TEA	COBA	15
476-NAT	RANCHER	131	BC356	BRAND	101	MC241-ASST	FLIER	85	MR196OS	MONTEREY	16
551B-BRN	RAIDER	140	BH152-ASST	COMMO	82	MC254-BRN	BILLY CAN	62	MR202OS-NAT	REHOBOTH	19
552-BRN	RAVENWOOD	140	BH159-ASST	COSTA RICA	84	MC255-ASST	BOONE	58	MR205OS-NAT	CURRITUCK	16
555-BRN	LAST CRUSADE	140	BH16-ASST	BANDA	85	MC265-BRN	WOODLAND	61	MR207OS-NAT	PAHOA	16
830D	WEATHER MAN	77	BH161-ASST	TRACKER	82	MC288	JETTY	68	MR209OS-TEA	BRYCE	133
830KS	PACKY	77	BH210-ASST	CRANK	82	MC296-FOSSIL	PALMERA	68	MR211OS-TEA	BRIARE	15
835-ASST	ROADY	86	BH212-ASST	REEL	73	MC297-FOSSIL	WILDLIFE	68	MR212OS-NAT	SALISBURY	20
860BB-KAKI	DR. WALTON	141	BH215-ASST	FORT MYERS	85	MC2TT	TRAILER	71	MR214OS-NAT	COROLLA	22
863L	HIKER	52	BH32-ASST	LURE	86	MC30-KAKI	FREESTANDING	71	MR215OS-ASST	DORADO	20
863M	TRAILMAN	52	BH53-ASST	BUOY	86	MC322-CAMO	MOONBEAM	58	MR216OS-ASST	RIO GRANDE	19
864M	TRAVELER	54	BH56	ANCHOR	84	MC333	RONDAVEL	56	MR217OS-NAT	GLOBAL	19
864WM-OLIVE	ASPEN	54	BH56-ASST	ANCHOR	84	MC357-ASST	BUHR	73	MR218OS-NAT	SKY	19
916-NAT	RIDGE	115	BH71-ASST	POACH	83	MC359	UMBRA	67	MR219OS-NAT	VENTOR	19
938-NAT	OUTBACKER	129	BH71-BASC	POACH	83	MC362-ASST	CANYON	75	MR221OS-NAT	OBSERVER	22
943-NAT	EUCALYPTUS	52	IJ12-ASST	WILLIE	141	MC368-ASST	RHINE	75	MR42OS	TULUM	15
948OS	COOLER	64	IJ21-DKBRN	CRYSTAL SKULL	141	MC376-BRN	DUSK	62	MR48OS-NAT	PISMO	22
949OS	SEABREEZE	64	IJ551-BRN	SATIPO	140	MC380-OLIVE	EQUINOX	70	MR56OS-NAT	PARKER	22
AEG100	SANTORINI	80	IJ554-BRN	BARRANCA	139	MC381	GALE	70	MR73-NAT	CODY	22
AEG101	ANAPOS	80	IJ557-BRN	BELLOQ	139	MC382OS	HAIL	75	MR74-NAT	PETOSKEY	22
AEG105-BLK	PATRAS	80	IJ559-BRN	KATANGA	139	MC383-ASST	WAVE	74	MR9-NAT	SAINT PAUL	23
AEG111	KASTORIA	80	KDM1	CALIFORNIA CHROME	5	MC384-ASST	RICANE	74	MR96OS-ASST	MARCO	23
BC108	NASSER	97	KDM5-BLEACH	SEATTLE SLEW	5	MC385-ASST	GUERRILLA	74	MS111OS-ASST	RIDER	37
BC118-ASST	LADOGA	97	KDM6-STL	COUNT FLEET	5	MC388-BRN	MERCURY	62	MS164	MILWAUKEE	27
BC123-ASST	LUGANO	99	KDM7-IVORY	JUSTIFY	5	MC50	YAMUNA	75	MS177	COASTAL	105
BC136	ULLSWATER	66	KDM8-IVORY	AMERICAN PHAROAH	5	MC52	AHOY	93	MS192	SAINT LOUIS	20
BC166	ISLANDER	99	MC1	EVERGREEN	70	MC62	BASIN	68	MS239-NAT	TUSCON	23
BC195-ASST	ELBRUS	98	MC10-KAKI	TOPWATER LURE	67	MC68	SAGUARO	56	MS248-ASST	DICTY	105
BC202-BASC	BASSWOOD	100	MC117-FOSSIL	AUGER	67	MD41-IVORY	CALISTOGA	23	MS267OS-ASST	SUNLIT	125

THE EMBROIDERY ADVANTAGE



Dorfman Pacific is your “one stop shop” for all your company logo needs. In addition to being one of the only companies with a direct straw embroidery program, thousands of in stock blank hats, and a full graphics team to support your graphic needs, we can also supply embroidered apparel and accessories from a variety of promotional brands.

Contact us for a complete embroidery catalog to review our stock art library and examples of embroidery styles, rhinestone treatments, custom pin and concho work, as well as tips on how to further customize your order.

DIRECT STRAW EMBROIDERY - CUSTOM PIN PROGRAM - RHINESTONES

INDEX

PRICES AND COLOR ASSORTMENT SUBJECT TO CHANGE • ALL STYLES ARE ONE SIZE UNLESS OTHERWISE INDICATED

STYLE NO	NAME	PAGE	STYLE NO	NAME	PAGE	STYLE NO	NAME	PAGE	STYLE NO	NAME	PAGE
MS268OS-ASST	SUNSCREEN	125	MS405-NAT	ROADIE	112	MS464OS-COCO	THERMAL	120	SAN376	DORSEY	46
MS269	ASTORIA	33	MS407-IVORY	SUMTER	112	MS465OS-NAT	TWISTER	120	SAN377-ASST	COBAN	46
MS260S-NAT	BANDWAGON	133	MS408-IVORY	BERKELEY	112	MS466OS-ASST	UPDRAFT	120	SAN378-ASST	ANTIGUA	46
MS276OS	MANASSAS	38	MS414	HELMET	113	MS467OS-ASST	TYPHOON	120	SAN380	MOSAIC	47
MS270S-NAT	TRAIL RIDE	134	MS417OS-ASST	AMARILLO	133	MS468OS-ASST	VAPOR	121	SAN381-GREY	WEST	47
MS290	WISEGUY	105	MS419OS-ASST	MURICA	135	MS469OS-ASST	PIPA	121	SAN388	ROMEO	47
MS294	TRAPPER	111	MS421OS-ASST	STARS & STRIPES	135	MS460S-NAT	RANCHO	134	SAN389-BRN	1969	48
MS299OS-NAT	PAR	39	MS422OS-TEA	AMERICA	135	MS471OS-NAT	VANE	128	SAN390-NAVY	EUPHORIA	48
MS303OS-NAT	CARIB	130	MS424OS	MCALLEN	24	MS472OS-ASST	COOLIE	128	SAN391-ASST	CONCERT	48
MS304OS-NAT	RUFF	130	MS425-TEA	JAMESTOWN	37	MS40S-ASST	19TH HOLE	38	SAN392-ASST	MIDAS	49
MS313OS-NAT	WESTERNER	133	MS426	BAYTOWN	29	MS570S-NAT	CORRALES	131	SAN393	AIRE	49
MS318	NASHVILLE	35	MS427-IVORY	PADRE	36	MS580S-NAT	BUTTE	131	SAN394	SHOWMAN	49
MS321	CHATEAU	35	MS429OS	DEPOE	29	MS86-ASST	SNAPPER	128	SAN704-TEA	BHUMI	42
MS324	DEL MAR	27	MS432OS-NAT	QUEST	39	MS870S-NAT	CHIP	131	SAN705-NAVY	TRISHUL	43
MS335OS-NAT	SAND DOLLAR	126	MS433OS-ASST	RANGE	107	MT11-NAT	SAUSALITO	26	SAN706-BLK	LUMINOSITY	43
MS336OS-ASST	ACES	130	MS434	MATCH STICK	111	MT11OS	SAUSALITO	26	SAN715	AVANT GARD	42
MS337OS-ASST	SEA GLASS	126	MS435OS-ASST	LODGE	107	P122	TAOS	11	SAN716	REFLECTION	42
MS351-TAN	BOARDWALK	35	MS437	CAMPFIRE	111	P123-NAT	CHANDLER	9	SDS914-TEA	DUXBURY	12
MS359OS-ASST	GRASSLAND	113	MS438-TEA	JUTE	115	P125-NAT	ORLEANS	9	SPF4	WRANGLE	58
MS361OS-ASST	SUNDOWNER	113	MS439-IVORY	CACTUS	111	P176-NAT	MASA	9	ST11OS	LOUDON	134
MS364OS-NAT	HORIZON	126	MS442OS-TOAST	MT. MOMMA	117	P179	NAPA	10	TT9OS-NAT	MAKAWAO	39
MS367OS-NAT	SEASCAPE	133	MS443OS-ASST	PALMETTO	117	P180-BLEACH	HOT SPRINGS	10	USA31-ASST	BANNER	88
MS369-BLEACH	GONDOLA	23	MS444OS-TOAST	BUCKHORN	117	P181-NAT	TEMPE	10	USA32-ASST	SPIRIT	88
MS371-IVORY	ROCKLAND	24	MS445OS-TOAST	PALM BRAID	118	P208-NAT	PALMER	10	USA34-ASST	NATIONALISM	88
MS375OS	PAGE	36	MS447OS-IVORY	SHADIE	24	P213-NAT	ALBUQUERQUE	10	USA35-ASST	FLAG WAVING	90
MS377	YORK	29	MS448OS-ASST	DRUMS	26	P219-NAT	ROSWELL	9	USA51-ASST	HOMAGE	89
MS382	STRAPPER	106	MS449OS	SLIDER	26	P221-NAT	MUIRFIELD	12	USA52-ASST	ALLEGIANCE	89
MS383-ASST	SHEIK	106	MS451OS	CHANTER	32	P223-BLEACH	EDGEWOOD	9	USA53-ASST	SEA TO SHINING SEA	89
MS385-ASST	ACAPULCO	106	MS452OS	JAMER	32	P226-BLEACH	HIGHLANDS	12	USA56-ASST	LIBERTY	90
MS386	BIG TIMER	107	MS453OS-NAT	KNOT	32	P227-NAT	COLT	12	USA57-ASST	DECLARATION	90
MS392OS-NAT	BREWER	133	MS454	PENTANI	33	P228-NAT	COZA	12	USA60-ASST	STAR SPANGLED	88
MS393OS-BURNT	CARIBO	135	MS455OS	MISTIE	33	P369-NAT	PADDOCK	12	V10-ASST	MAUI	103
MS394OS-ASST	BOOTHBAY	134	MS456OS-NAT	LATTITIDES	115	SAN109-GREY	DOVE	43	V198-ASST	TIDE POOL	103
MS397OS	WYATT	27	MS457-ASST	HYDRO	108	SAN149-NAT	SALVADOR	43	V239-ASST	FLOATER	73
MS398OS-NAVY	BAR HARBOR	36	MS458-IVORY	LUNAR	108	SAN206-ASST	MOHICAN	44	V248-ASST	PECOS	103
MS399OS-NAT	GILBERT	24	MS459-NAT	MONSOON	108	SAN266-ASST	MEMENTO	44	V256-ASST	ZULU	98
MS30S-ASST	PORTLAND	38	MS460-NAT	OZONE	115	SAN326-ASST	BLISS	45	V331	NAPO	94
MS401OS-NAT	JINGOIST	126	MS461OS-NAT	OVERCAST	118	SAN359	FORWARD	45	V7	CHAMPLAIN	102
MS402OS-NAT	PATRIOT	126	MS462OS-NAT	TIDELAND	118	SAN361-ASST	ESSENCE	45	V7-FASH	CHAMPLAIN	102
									V8-ASST	ST. CLAIR	103

KIDS SIZING CHART	age	Infant	Toddler	2-4	4-6X	7-14 Youth
	cm	47 - 49	50 - 51	52 - 53	54	55
	size			S, S/M	M, L	L/XL

SIZING CHART	Head Circumference		Adult Hat Size			
	Inches	Centimeters	Fitted	Easy Fit	Sized Stretch Fit	Stretch Fit/Adjustable
	21 1/4	54	6 3/4	Small (S)	Small/Medium (S/M)	One Size Fits Most
	21 5/8	55	6 7/8			
	22	55.9	7	Medium (M)	Medium/Large (M/L)	
	22 3/8	56.8	7 1/8			
	22 3/4	57.8	7 1/4			
	23 1/8	58.7	7 3/8	Large (L)	Large/XL (L/XL)	
	23 1/2	59.7	7 1/2			
	23 7/8	60.6	7 5/8	XL		
24 1/4	61.6	7 3/4				
24 5/8	62.5	7 7/8	XXL			
25	63.5	8				



UPF50+
SUN
PROTECTION



CUSTOM
EMBROIDERY
AVAILABLE

CONTACTS

CORPORATE - INTERNATIONAL - GLOBAL & NATIONAL SALES REPRESENTATIVES

SALES MANAGEMENT

Scott Starnes, Executive VP, Business Development

Cell: 209-518-1684 Ph: 214-291-9784

800-325-4287 Fax: 214-342-1285

scott.starnes@dorfman-pacific.com

Kurt Willett, Executive VP of Sales

Cell: 817-219-3304 PH: 209-373-1237

kurt.willett@dorfman-pacific.com

Wade Collingsworth, VP of Sales;

Eastern Division Sales Manager

Cell: 209-518-1963 Ph: 717-764-6700

Fax: 717-326-1477

wade.collingsworth@dorfman-pacific.com

Frank Kinney, VP of Sales;

Western Division Sales Manager

Cell: 209-351-0243 Direct Office: 972-810-4210

Office: 214-342-0071 or 800-325-4287 Fax: 214-342-1285

frank.kinney@dorfman-pacific.com

SALES REPRESENTATIVES

Wendy Bachelis

Territory: Southern CA (North of I-10 from Santa Monica to Tehachapi, East to I-15)

Cell: 818-613-6331

wendybachelis@gmail.com

Alan Barsamian

Territory: AK, Northern ID, MT, OR, WA

Cell: 425-985-2519 Ph: 360-378-3252

800-474-2698 Fax: 360-378-3282

barsamian@interisland.net

Wally, Jennifer & Sam Berkman

Territory: CO, Southern ID, UT (Excluding St. George), NM, WY

Cell: 303-949-5442 (Jennifer)

Cell: 303-949-4793 (Wally)

Cell: 303-521-4794 (Sam)

Regional Office: Ph: 303-233-0215 800-886-3726

Fax: 303-233-7057

waldbond@comcast.net

jenggirl4@comcast.net

samberkman1@comcast.net

Radmila Caparosa

Territory: NJ (Excluding Coastal Resort Areas), NY

Cell: 917-306-6443

radacapa69@gmail.com

Elena Carboni

Territory: CT, MA, ME, NH, RI, VT

Cell: 914-714-5990 Fax: 800-395-4182

elenacarboni.ne@gmail.com

Frank Cavallaro

Nilo & Associates

Territory: IL, IN, KY, MI, OH

Cell: 630-936-2538 Fax: 630-359-3522

fcav3858@comcast.net

Lisa De Luca

Territory: Southern CA (HWY 91 to Mexico Border)

Cell: 619-977-3323 Fax: 858-259-9970

lisa.deluca@dorfman-pacific.com

Erik Erwin

Territory: Northern and Southern TX

Cell: 832-865-4452

double.tx@gmail.com

Ron Fuller

Territory: West FL (Panhandle to Key West) (W of Rte. 27),

Coastal Resort Areas of DE, MD, NJ, NC, SC, VA

Cell: 305-240-0203 Fax: 800-736-7040

roncoastal1@gmail.com

Beverly Gale

Fuller & Associates

Territory: West FL (Panhandle to Key West) (W of Rte. 27),

Coastal Resort Areas of DE, MD, NJ, NC, SC, VA

Cell: 757-545-5007 Fax: 866-523-5462

brelax1@gmail.com

Sue Gallagher

Territory: Central and Eastern FL from GA to Miami

Cell: 561-699-9214 Ph: 386-673-5060

Fax: 386-673-3083

suegal33@bellsouth.net

Thom Harris

Territory: El Paso County TX

Cell: 214-507-4374 Ph: 214-342-0071

Fax: 972-378-6561

thom.harris@milanohats.com

Jim Holly

Territory: IA, MN, ND, SD, WI

Cell: 612-770-1054 Fax: 763-595-8982

jim@hollysales.com

Richard Jacobs

Territory: HI, Guam, Saipan

Cell: 808-224-1303

808-524-1755 Fax: 877-524-1773

emoveshawaii@gmail.com

Scott & Peggy Kent

Territory: Northern CA (Alameda, Contra Costa,

Monterey & San Luis Obispo Counties)

Cell: 925-998-3757 (Scott)

Cell: 925-998-4794 (Peggy)

sskenthathat@gmail.com, pakenthathat@gmail.com

Scott Lester

Territory: DC, DE, MD, PA, VA, WV (Excluding Coastal Resort Areas)

Cell: 443-756-7966 eFax: 866-540-3656

scottldphats@gmail.com

Barry Litman & Carol Clark

Territory: KS, MO, NE

Cell: 918-510-8583 Ph: 918-253-3888

Fax: 918-516-0477

barry@bigredgate.com; carol@bigredgate.com

David Milani

Territory: Northern CA (San Francisco Peninsula to Oregon Border)

Cell: 415-517-2520 Fax: 415-861-0488

david.milani2@gmail.com

Reggie Pooley

Territory: Northern and Southern Texas

Cell: 713-826-6910 Fax: 832-213-3152

rp12510tx@aol.com

David Revis

Territory: AR, LA, MS, OK

Cell: 501-908-5345

revrev3@gmail.com

Paul Smith

Territory: AL (Including Gulf Shores and Orange Beach), GA (Including ST Simons, Tybee Island and Jekyll Island Coast), NC (Excluding Coastal Resort Areas), SC (Excluding Coastal Resort Areas), TN

Cell: 678-777-5328 Fax: 770-818-5566

pswsmithaths@gmail.com

John Tighe

Territory: Southern CA (Downtown Los Angeles, East San Diego, Palm Springs, East HWY-91 to I-15, HWY-55 North to I-10), Mammoth Lake & Bishop CA

Cell: 714-454-2766 800-549-6804

Fax: 951-304-9615

johtighe.hats@gmail.com

Debby Watson

Territory: West Texas -- All of Texas West of Hwy 281, including Wichita Falls, Tx and North of I-20 (including Midland & Odessa) to the Mexico Border

Ph: 405-659-7312 Fax: 405-844-6970

debby.watson@milanohats.com

Gary Zeledon

Territory: Central & Northern CA (Tehachapi/

Bakersfield North), Northern NV, Southern OR

Cell: 916-612-9313 Ph: 916-784-9313

Fax: 916-784-8593

gary.zeledon@gmail.com

INTERNATIONAL SALES

Rafael H. Arbelaez

Territory: South America

Cell: 011-573 153407201 (Colombia)

Ph: 954-323-8548 (US) Fax: 011-574 5124007

hatman70@hotmail.com

Salvador Egea, Jr.

Tropical Vendors

Territory: Caribbean Region

Ph: 787-788-1207 Fax: 787-788-1153

sal@tropicalvendors.com

Kelly Harper

Territory: Canadian Province: BC (Central)

Office: 250-769-5829

800-658-1344 Fax: 250-769-8090

vkharper@telus.net

Savina Huff

Territory: Canadian Province: BC (Lower Mainland)

Cell: 604-377-7258 Fax: 604-888-7235

savinahuff@shaw.ca

Michael Jaz

Territory: Canadian Provinces: NB, NL, NS, ON, QC

Cell: 613-327-4749 Ph: 613-830-7787

Fax: 613-830-8569

nick.jaz@sympatico.ca

Len Zuccherato

Territory: Canadian Province: AB (Central & Southern)

Cell: 403-923-0598 Ph: 403-208-9441

Fax: 403-475-3639

lennyz@shaw.ca

GLOBAL SALES

Debra Highsmith, VP of Women's

Division & Catalog Sales

Territory: Mexico

Cell: 209-518-2961 Ph: 209-373-1324

800-675-1187 x 1324 Fax: 866-247-4624

debra.highsmith@dorfman-pacific.com

Dennis Marxen, Senior VP of Global Sales

Cell: 916-847-0480 Ph: 916-939-1200

dennis.marxen@dorfman-pacific.com

John Callanan, VP of Corporate Sales

Cell: 44-7248-348348

john.callanan@dorfman-pacific.com

NY Showroom

Leslie Correa, VP of Corporate Sales

Cell: 209-518-1934

800-887-4428 Fax 212-268-4662

leslie.correa@dorfman-pacific.com

Sara Axel, VP of Corporate Sales

Cell: 209-762-2131 Ph: 646-564-2580

800-887-4428 Fax 646-594-0632

sara.axel@dorfman-pacific.com

Rep List Entered 08052019

P.O. BOX 213005
STOCKTON, CA 95213-9005
PH: 800-367-3626
FAX: 866-247-4624
WWW.DORFMANPACIFIC.COM



The Headwear Association Platinum Sponsor

“Our mission is to promote hats and the headwear industry throughout the world, and to foster goodwill and fellowship among those engaged in the headwear industry.”

CUSTOMER SERVICE/SALES

800-DORFMAN (367-3626) OR 209 982-1400 - 6:30AM TO 4:30PM (PST)

FAX 800-4DP-HATS (437-4287) **EFAX:** 866 247-4624

E-MAIL CUSTSERVICE@DORFMAN-PACIFIC.COM

WEB ADDRESS WWW.DORFMANPACIFIC.COM

NON-SALES INQUIRIES TOLL FREE: 800 675-1187

SHIPPING 2615 BOEING WAY - STOCKTON, CA 95206

MAILING P.O. BOX 213005 - STOCKTON, CA 95213-9005

NATIONAL SHOWROOMS

NEW YORK, NY

393 5TH AVENUE, 7TH FLOOR • NEW YORK, NY 10016

PH: 800 887-4428 FAX: 212 594-0632

STOCKTON, CA

DORFMAN PACIFIC CORPORATE OFFICE

2615 BOEING WAY - STOCKTON, CA 95206

PH: 800 367-3626 eFAX: 866 247-4624

ATLANTA, GA

AMERICASMART, BUILDING 3

75 JOHN PORTMAN BLVD. NW #8W121A - ATLANTA, GA 30303

PH: 800 367-3626 eFAX: 866 247-4624

DALLAS, TX

DALLAS MARKET CENTER

2050 N. STEMMONS FREEWAY, 13TH FLOOR SUITE #13656

DALLAS, TX 75207

PH: 214 631-2355 FAX: 214 631-2082

DENVER, CO

DENVER MERCHANDISE MART

451 EAST 58TH AVENUE #3571 & 3564 - DENVER, CO 80216

PH: 800 866-3726 FAX: 303 233-7057

HONOLULU, HI

EVERYTHING MOVES SALES

615 PIIKOI ST., SUITE 610 - HONOLULU, HI 96814

PH: 888 706-6837 FAX: 877 524-1773

SCALA™

SPRING | SUMMER 2020

LATITIDES | MS456OS-NAT | PG 115



DORFMAN  PACIFIC®