



CHECKDEX

Featured Parts Line Offerings

• CABS • HOODS • ENGINES • TRANSMISSIONS • FUEL TANKS • COOLING PACKAGES • REAR CUT OUTS • FRONT AXLES • BUMPERS • FIFTH WHEELS •



TABLE OF CONTENTS

RECYCLED, RENOVATED OR SURPLUS	1
WARRANTY DETAILS	2
PERFORMER SERIES ENGINES	3
PERFORMER TRANSMISSIONS	4
PERFORMER SERIES HOODS	5
PREMIUM SERIES HOODS	6
RENOVATED EGR COOLERS.....	7
RENOVATED HEADLAMPS	8
RENOVATED FLYWHEELS	9
RENOVATED ALUMINUM RIMS	10
SERVICE CONNECTORS	11
GREEN IS OUR NATURE	12
FACILITY MAP	13





RECYCLED, RENOVATED OR SURPLUS

We are customer-focused and driven, and strive to understand your business and help tailor solutions for you. With three different product lines, we have many options, regardless of the age and condition of the vehicle.

It's our goal that the Dex experience is your solution for all of your parts needs.

Parts line offerings:



RENOVATED PARTS

Renovated parts are checked for fit, form and function, and fall between the minimum and maximum specifications for each product line. Items outside specifications are repaired or replaced. Wearable items, such as seals and gaskets, are replaced. The item is then thoroughly tested to ensure quality, cleaned and/or painted.

All renovated parts have a minimum 90-day warranty, and each product line has a specific warranty, with information available at www.dexheavydutyparts.com.



RECYCLED PARTS

A Dex "recycled" part is dismantled from a vehicle or assembly. The item will be cleaned, inspected, and determined as usable and in good working condition.

All recycled parts have a 30-day, no-questions-asked warranty.



SURPLUS PARTS

Surplus parts are in new condition, and are received from production facilities, parts distribution centers, or dealer and fleet returns. The items are sold at a discount off of regular price.

There is no warranty on surplus items.



[CLICK HERE TO RETURN TO TABLE OF CONTENTS](#)



WARRANTY DETAILS

Dex's warranty is specific to category offerings:

- Recycled – 30 days, replacement or refund, no questions asked
- Renovated – minimum 90 days up to two years (each specific to product line)
- Surplus – sold as is and without warranty

PRODUCT	WARRANTY						NOTES
	30 DAYS	60 DAYS	90 DAYS	6 MONTHS	1 YEAR	2 YEARS	
Surplus Parts							
Recycled Parts	X						
Renovated Headlamps					X		
Renovated Rims			X				
Renovated Hoods (Performer Series)				X*			*Additional Warranty on Paint
Renovated Hoods (Premium Series)				X*			*Additional Warranty on Paint
Renovated Flywheels			X				
Performer Series Engines				X			
Renovated EGR Coolers					X		
Renovated Transmissions (Performer)						X	



[CLICK HERE TO RETURN TO TABLE OF CONTENTS](#)



PERFORMER SERIES ENGINES

Dex now offers a performer series engine. Wearable items are replaced, and each engine is checked for proper function, quality and performance.

ADVANTAGES:

- Recycled engine with added value
- Wearable items replaced
 - Main bearings
 - Rod bearings
 - Front crank seal
 - Rear crank seal
 - Oil pan gasket
 - Valve cover gasket
 - New filters
 - Wiring harness
- Valve adjustment
- Each added-value engine is operated and checked for proper function, quality and performance
- Video of running engine available for viewing before purchase



[CLICK HERE TO RETURN TO TABLE OF CONTENTS](#)



PERFORMER TRANSMISSIONS

Dex is proud to introduce a new program for Renovated Eaton FR015210C and FR016210C Series Transmissions. Dex Renovated Transmissions are built to exceed industry-accepted guidelines.

ALL RENOVATED TRANSMISSIONS INCLUDE THESE NEW PARTS:

- Air module assembly
- Breather
- Bell housing retaining nuts
- Reverse switch
- Integral cooler, if equipped
- Oil pump cover and gasket
- Bell housing and shifter gaskets
- Dyno load testing
- Input shaft
- Synchronizer kit w/o sliding clutch
- Reverse idler spiral, input shaft, shift fork snap rings and output shaft nut



Dex Part Number	Model	Application Versions
FR016210CPDEX	FR016210CP	Integral Pump
FROF16210CPDEX	FROF16210CP	Fwd Shifter Mount / Integral Pump
FR016210CCDEX	FR016210CC	Integral Cooler
FROF16210CCDEX	FROF16210CC	Fwd Shifter Mount / Integral Cooler

FEATURES:

- High-quality component at a very competitive price
- Exceptional renovation process using only genuine OEM parts
- Each transmission is dyno load tested for proper operation and quality assurance
- Supported by the Dex authorized distributor network for prompt availability and improved uptime
- Supported by Dex renovated product warranty



[CLICK HERE TO RETURN TO TABLE OF CONTENTS](#)



PERFORMER SERIES HOODS

Dex offers renovated hoods that are built back to original OEM specifications by our trained technicians. Hoods are available with many different finish options to meet your needs.



ADVANTAGES:

- Recycled hood, primed and ready to paint
- Renovated using OEM-approved process, paint and materials
- Genuine / OEM hoods (not aftermarket)
- Cost efficient vs. buying new
- No core charge
- Reduces down time and body shop labor
- Only renovated product line using OEM specifications and approval
- Quality Axalta paint products (formerly Dupont)
- Ideal for body shops looking to reduce preparation and turnaround time
- Backed by Dex renovated warranty for workmanship (180 days)
- Backed by Axalta warranty on paint (up to seven years)

SHIPPING:

- FREE protective shipping crate

OPTION 1: Renovated hood with primer

OPTION 2: Renovated hood with primer and groomed parts kitted (if available)

OPTION 3: Renovated hood with primer and paint



[CLICK HERE TO RETURN TO TABLE OF CONTENTS](#)



PREMIUM SERIES HOODS

Dex offers fully painted renovated hoods. All are custom painted with industry-standard color options in our professional in-house paint booth.



ADVANTAGES:

- Renovated to OEM specifications
- Painted to customer specifications
- Genuine / OEM hoods (not aftermarket)
- Cost-efficient options
- No core charge
- Only renovated product using OEM specifications and approval
- Quality Axalta paint products (formerly Dupont)
- Ideal for shops with limited or no body shop
- Drop ship ordering direct to customer
- Backed by Dex renovated warranty for workmanship (180 days)
- Backed by Axalta warranty on paint (up to seven years)

SHIPPING:

- FREE protective shipping crate

OPTION 4: Renovated hood with primer, paint and groomed parts installed



[CLICK HERE TO RETURN TO TABLE OF CONTENTS](#)



RENOVATED EGR COOLERS

EGR coolers are a frequent need. We've created a highly technical and thorough renovation process to provide reliable coolers quickly, and at a cost-effective price point.



ADVANTAGES:

- Only OEM approved cleaning methods
- Pressure and flow testing to meet or exceed industry standards
- Thorough inspection of all o-ring and gasket surfaces, as well as weld joints. Each EGR cooler housing is checked for cracks and abnormal wear. Repairs are made as necessary to ensure proper sealing, function and product quality.
- Installation kit (seals, gaskets, hose and clamps)
- Core information and return package
- One-year / unlimited-mile warranty

Mack / Volvo Part Number	Description
222-85136427	MP7 (US07 and newer variants)
222-85136428	MP8
VPT85136427	Volvo D11 (US07 and newer variants)
VPT85136428	Volvo D13



[CLICK HERE TO RETURN TO TABLE OF CONTENTS](#)



RENOVATED HEADLAMPS

Dex offers renovated headlamps for Volvo VNL Version II models. Our patented renovation process is recognized by OEMs to restore components to their original appearance, safety and service specifications.



ADVANTAGES:

- Cost-effective alternative.
- One-year limited warranty.
- All new bulbs and sealing gaskets installed. All other electrical components tested to ensure functionality.
- Lens restored to OEM functionality and ASTM D10003-9 standards for hazing and luminous transmittance.

Dex Part Number	Description
82329124DEX	Left Headlamp
82329127DEX	Right Headlamp

FREIGHTLINER CASCADIA HEADLAMPS ALSO AVAILABLE



[CLICK HERE TO RETURN TO TABLE OF CONTENTS](#)



RENOVATED FLYWHEELS

Dex now offers a comprehensive line of renovated flywheels, providing a cost-efficient alternative to new flywheels that meets or exceeds industry-accepted guidelines. A renovated flywheel can also allow for convenient over-the-counter bundling with clutch jobs, and Dex's quick shipping can keep downtime to a minimum.



ADVANTAGES:

- Genuine OEM flywheels
- Renovated to meet or exceed industry-accepted guidelines and/or practices
- Renovation process includes machining of the mating surface and quality checks for fit, form and function using tested and calibrated machining equipment
- Can provide a quick and efficient bundling opportunity with clutch jobs

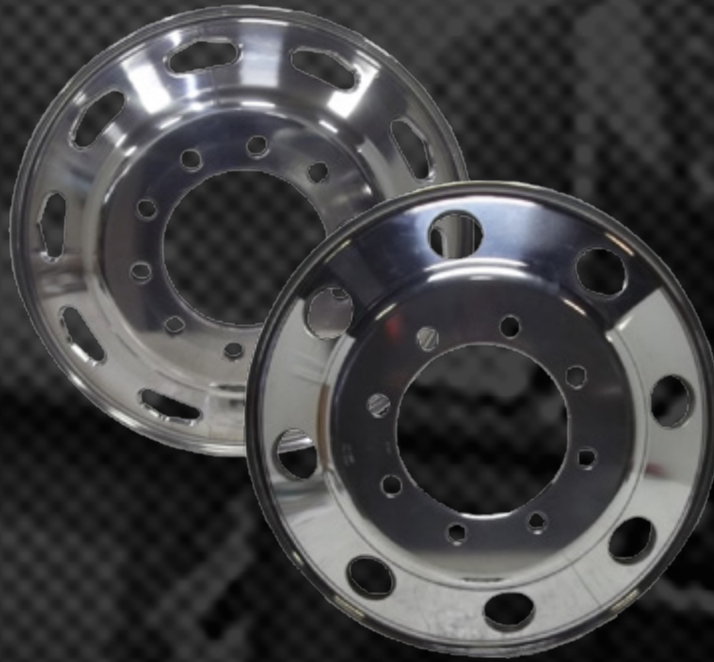


[CLICK HERE TO RETURN TO TABLE OF CONTENTS](#)



RENOVATED ALUMINUM RIMS

Dex brings new life to aluminum rims. We offer many styles and sizes, all renovated and thoroughly inspected to meet DOT guidelines.



ADVANTAGES:

- Large selection
- Polished inside and out
- Thoroughly inspected and will meet DOT guidelines
- Ninety-day warranty



[CLICK HERE TO RETURN TO TABLE OF CONTENTS](#)












SERVICE CONNECTORS

Wiring harness connectors are a commonly replaced item in your service department, sometimes requiring a whole new wiring harness.

ADVANTAGES:

- Less expensive than a complete harness replacement
- Quick solution – minimizes downtime
- Comes complete with pins and wiring pigtails for easy installation
- Complete cross-reference for all makes and models available

Dex Part Number	Mack / Volvo Part Number	Supplier	Supplier Part Number	Series	Cavities in Connector	Wires in Connector	
26034-000003Dex	8076673	Delphi	12129565	Metri-Pack 280	4	4	
26034-000004Dex	958AM58/20815286	Delphi	15326635	GT 280	6	5	
26034-000005Dex	964AM9/20457411	Delphi	15326915	GT 280	12	12	
26034-000006Dex	954AM14/25013743	Delphi	15300027	Metri-Pack 280	2	2	
26034-000007Dex	967AM36/25165543	Delphi	15326666	GT 280	16	16	
26034-000008Dex	964AM10/21074111	Delphi	15326910	GT 280	12	11	
26034-000010Dex	954AM28/25154342	Delphi	12052641	Metri-Pack 150	2	2	
26034-000011Dex	20429842	AMP	1-1418883-1	MCP Receptacle	62	35	
26034-000012Dex	20734993	FCI	54201412	Apex Coupling Connector	14	13	

Dex Part Number	Mack / Volvo Part Number	Supplier	Supplier Part Number	Series	Cavities in Connector	Wires in Connector	
26034-0000015Dex	967AM87/20567733	AMP	5-1718321-3	MCP Receptacle	39	20	
26034-0000016Dex	955AM40/20720285	LEO	1106L	Din 2-7 pole bayonet	4	2	
26034-0000017Dex	912AM7/8178678	Delphi	12020599	Metri-Pack 280	2	2	
26034-0000018Dex	21082469	AMP	1-1534126-1	MCP Receptacle	15	13	
26034-0000020Dex	955AM46/21164765	Delphi	13602480	GT 150	3	3	
26034-0000021Dex	962AM9/25165542	Delphi	15326660	GT 280	10	6	
26034-0000022Dex	957AM17 / 25024036	Delphi	12084891	Metri-Pack 280	6	6	
26034-0000023Dex	955AM20/21099308	Delphi	12110293	Metri-Pack 150	3	3	
26034-0000055Dex	964AM9/20457411	Delphi	15326915	GT 280	12	10	
26034-0000056Dex	964AM9/20457411	Delphi	15326915	GT 280	12	8	
26034-0000057Dex	967AM36/25165543	Delphi	15326666	GT 280	16	15	
26034-0000058Dex	954AM14/25013743	Delphi	15300027	Metri-Pack 280	2	2	



[CLICK HERE TO RETURN TO TABLE OF CONTENTS](#)



GREEN IS IN OUR NATURE

Our commitment to the environment runs throughout our operation. Beyond the parts we receive that can be classified as “recyclable” in our own product line, we recycle and reuse everything we can within our own operation – from the copper wiring from a tear-down to the oil that comes from draining engines and the plastic bottles from our lunch.

We've made major investments in:

Extraneous parts and materials recycling

If it can be recycled, it is. Parts that don't meet our standard or remain after a tear-down get sorted and recycled. We're proud to recycle more than 3 million pounds of material every year.

Fluid recycling

All fluids removed from dismantled chassis are captured and recycled. Diesel fuel is filtered and used in Dex equipment. We even reuse waste oil and fuel to heat the warehouse in winter.

Wastewater treatment

We clean the contaminants from and reuse the water we use to clean truck parts. Our closed-loop recycling system is capable of filtering approximately 5,000 gallons of water per shift.



[CLICK HERE TO RETURN TO TABLE OF CONTENTS](#)



OVER 3 MILLION PARTS ON HAND ... AND GROWING

38.3 Acres • 210,000 Sq. Ft.

- 1 Customer Showroom
- 2 Customer Warehouse
- 3 Renovation Stations
- 4 Parts Wash System
- 5 Wash Bay
- 6 Wastewater Treatment System
- 7 Dismantling Area
- 8 Paint Booths
- 9 Renovation Stations
- 10 Engine Testing Room
- 11 Sanding / Painting Prep Room
- 12 Body Shop Area
- 13 Air Compressor System
- 14 Fluid Recycling Area
- 15 Shipping / Receiving
- 16 Administrative & Support Offices
- 17 Conference Center



CLICK HERE TO RETURN TO TABLE OF CONTENTS



facebook.com/DexHeavyDutyParts



youtube.com/user/DexTruckParts

• CABS • HOODS • ENGINES • TRANSMISSIONS • FUEL TANKS • COOLING PACKAGES • REAR CUT OUTS • FRONT AXLES • BUMPERS • FIFTH WHEELS •