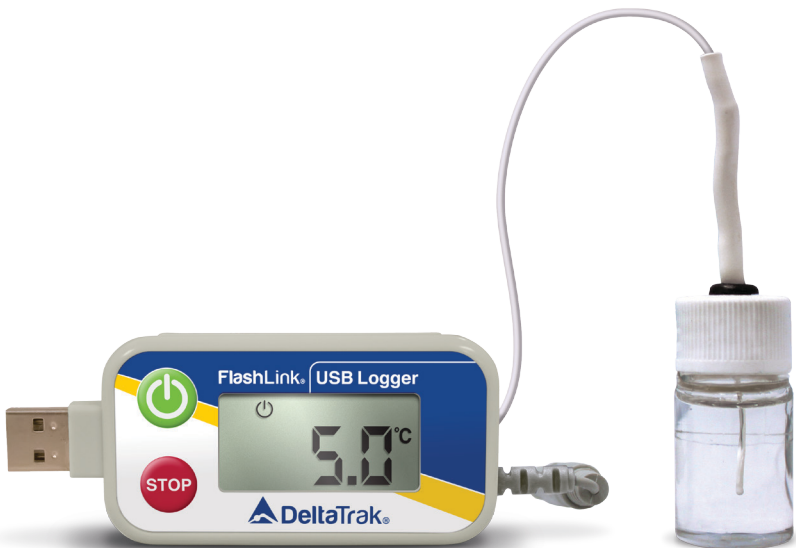




FlashLink[®] Models 20932, 20938

Certified Vaccine USB Data Logger



Operating System Requirements

Windows XP, Windows 7, 32 bit or 64 bit computers.

Hardware Requirements

400 MHz minimum, 512 MB RAM
Memory, 500GB Hard Drive, One USB
Port 2.0 or 3.0

Device Compatibility

FlashPDF Program Manager supports
FlashLink Reusable USB Data loggers
and In-Transit Data loggers.

Other Software Requirements

Adobe Acrobat Reader 8.0 or greater

Getting Started with the FlashLink Certified Vaccine USB Data Logger

The Glycol Bottle

The logger features a bottle with glycol solution surrounding the sensor inside. It emulates temperature changes experienced by most vaccines and fluids stored in refrigerators and freezers. Glycol also acts as a buffer to prevent false alarms with rapid temperature fluctuations expected from door openings and normal cycling of the compressor.

Once the glycol bottle is placed in the storage unit, allow enough time for it to acclimate to the internal temperature of the unit before putting the logger into service. The logger can be detached from the sensor for downloading data.

Note: An “LLL.L” shown on the LCD display indicates the external probe sensor isn’t plugged into the thermometer.

Software Download and Installation

1. Open a web browser and go to **www.deltatrak.com** website.
2. Locate the main menu at the top of the web page under the DeltaTrak company logo and then select **Support** in the menu.
3. Scroll down to '**Software and Drivers**' in the menu and Click this selection.
4. Along the left side of the page, go down to **Certified Vaccine Data Logger with Glycol Bottle (WHO pre-qualified)** section, and then Click on **FlashPDF Program Manager 5.0 or greater**
5. Fill out the form and Click on the **Submit** button at the bottom of the form.
6. On the next screen, please take note of the phone number for Technical Support and Click on **Download** in the center of the screen.
7. On the next screen, select the location where you will save the download

file and Click **Save** to start your download.

8. When the download is completed, navigate to the location on your computer where you saved the download file.
9. Double Click the **FlashPDFPM.zip** file. A new window will open.
10. Double Click on the **FlashPDF 5.0 program Manager Setup.exe** file and the software installation will begin.
11. When the **Welcome** screen is displayed, the installation process will guide you through the remaining steps for the software installation.

Help File

Please read the help file before getting started. The Help system can be accessed by a single **right click** on the FlashPDF Program Manager lightning bolt icon in the system tray and selecting “**About**” from the pull down menu.

Select the link “**Click here for help**” to access the Help system which will provide detailed instructions on how to configure the data logger in more detail and how to retrieve and analyze data from your data logger.

Configure your Data Logger

Remove the FlashLink Certified Vaccine USB Data Logger from its package

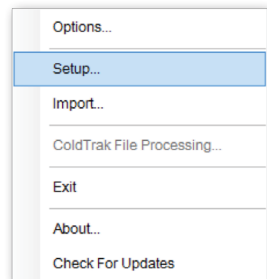
Important

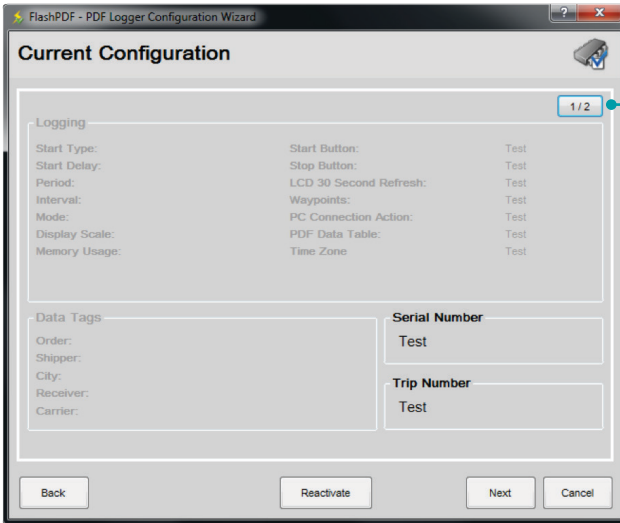
Press the **START** button and release when **hib1** appears on the LCD, press the **START** button a second time and release when **hib2** appears on the LCD, press the **START** button a third time and release when **hib3** appears on the LCD. Press the start button again and the logger will go into start-up mode; all segments of the LCD will light up briefly, then the screen will go blank and only the ● icon will appear.

Connect the logger to any available USB port on your computer.

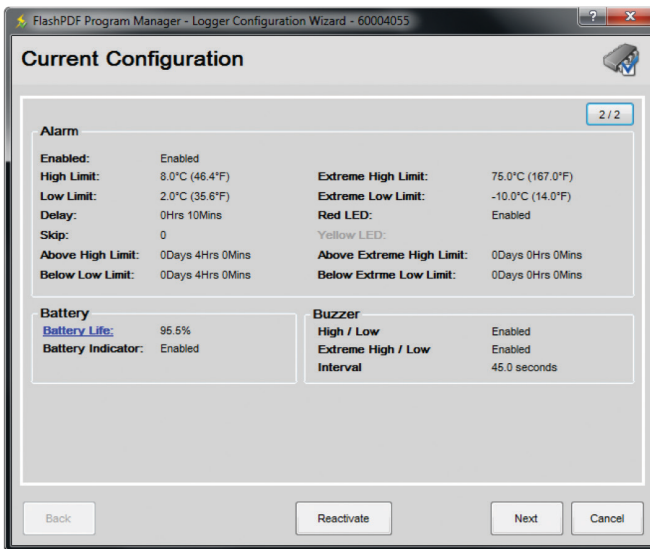
Locate the FlashPDF Program Manager Icon in the system tray and **single right click** on it.

Open the configuration window by clicking on **Setup** in the menu. **Current Configuration** dialog box will appear.





Click on 1/2 on the top right to get to second Current Configuration window



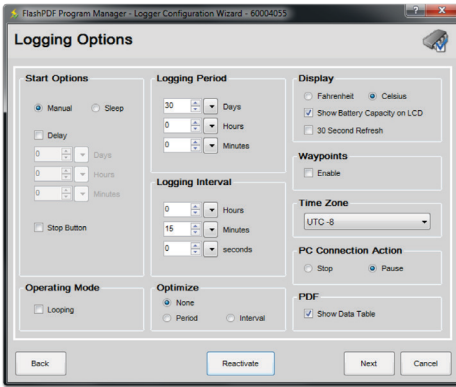
Second Current Configuration window shows Alarm and Buzzer settings, and Battery information.

Battery Information

This window shows current battery life and whether the battery life indicator icon is enabled on the LCD of the logger.

Logging Options

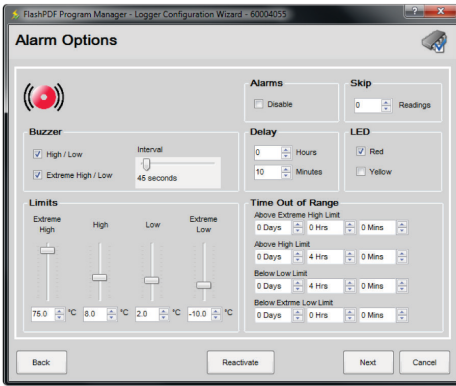
See FlashPDF Help File for more information about configuration options.



Suggested Settings:

1. Set **Start Options** to manual
2. Set **Period** to 30 days
3. Set **Minimum Logging interval** to Every 15 minutes

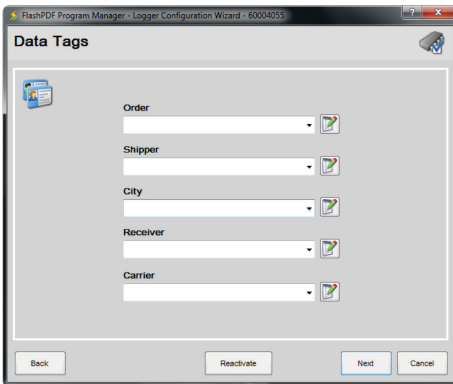
After setting the Logging Options, click **Next**



Alarm Options

Set high/low and extreme high/low temperature threshold limits for triggering the alarm. Option to enable flashing red or yellow LED and an audible buzzer. Suggested Settings: High = 8° C / Low = 2° C

After setting Alarm, Buzzer and LED options, click **Next**



Data Tags

The optional information on this screen is intended for shipping the logger with products. It can be used to identify storage unit number, location of the logger, and drug lot codes.

Click **Next** to continue.

New Configuration

The New Configuration dialog box shows the settings that will be programmed into the logger. To make changes, click the **Back** button. Click on **1/2** in the top right corner to toggle to the second New Configuration dialog box which shows Alarm, Buzzer and Battery information. Clicking **Next** from this first window will bypass the second window and the **Logger Configuration** dialog box will open.

FlashPDF Program Manager - Logger Configuration Wizard - 60004055

New Configuration

1/2

Logging

Start Type:	Manual	Start Button:	Enabled
Start Delay:	LCD 30 Second Refresh	Stop Button:	Enabled
Period:	666Days 15Hrs 30Mins	Waypoints:	PC Connection Action: Pause
Interval:	0Hrs 30Mins 05Secs	PDF Data Table:	Enabled
Mode:	Normal	Time Zone:	UTC -3
Display Scale:	Celsius		
Memory Usage:	99%		

Data Tags

Order:	60004055
Shipper:	
City:	
Receiver:	Trip Number
Carrier:	45359000

Back Save Reactivate Next Cancel

Click on 1/2 to toggle between the two New Configuration dialog boxes

FlashPDF Program Manager - Logger Configuration Wizard - 60004055

New Configuration

2/2

Alarm

Enabled:	Yes	Extreme High Limit:	86.0°C (186.8°F)
High Limit:	8.0°C (46.4°F)	Extreme Low Limit:	-40.0°C (-40.0°F)
Low Limit:	2.0°C (35.6°F)	Red LED:	Enabled
Delay:	0Hrs 20Mins	Yellow LED:	Enabled
Skip:	16		
Above High Limit:	3Days 5Hrs 35Mins	Above Extreme High Limit:	0Days 0Hrs 0Mins
Below Low Limit:	3Days 5Hrs 35Mins	Below Extreme Low Limit:	0Days 0Hrs 0Mins

Battery

Battery Life:	95.7%
Battery Indicator:	Enabled

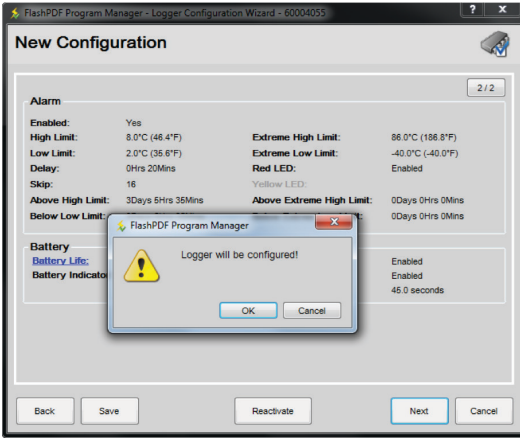
Buzzer

High / Low:	Enabled
Extreme High / Low Interval:	45.0 seconds

Back Save Reactivate Next Cancel

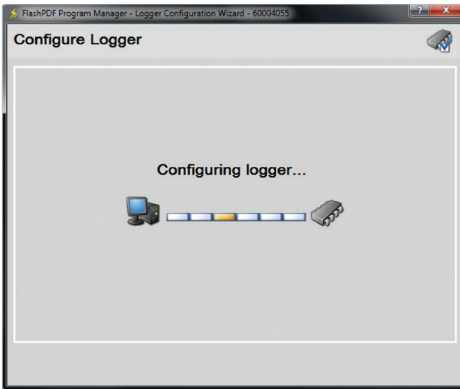
Review Alarm, buzzer and battery settings in the second **New Configuration** dialog box. To make changes, click the **Back** button, click **Next** to continue.

Click **OK** to begin configuration.

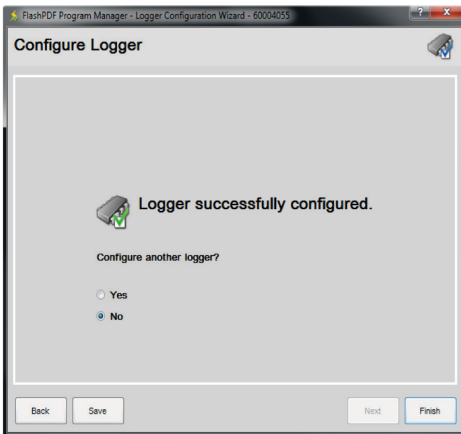


NOTE: Clicking **OK** on the **New Configuration** dialog box will start logger configuration and will write the information to the logger memory.

Logger is being configured.



To configure another logger, select **Yes** and click **Next**. Click **Save** to save the current configuration parameters for future use.



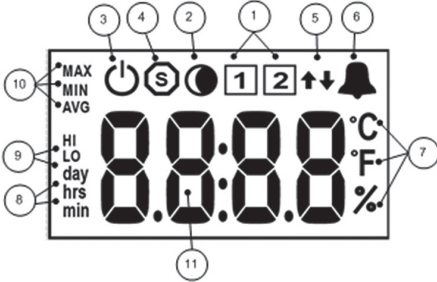
To close the programming mode select **No** and click **Finish**. Disconnect the data logger from the computer.

Configured Logger

The  icon should show on the LCD display indicating it is ready to be put into service



The USB Logger LCD Screen

	1	Sensor 1 icon (CH 1)
	2	Normal operation mode icon
	3	Active mode icon
	4	Stop mode icon
	5	High and Low alarm arrows
	6	Alarm icon
	7	°C, °F & % scale icons
	8	Day, Hours and Minutes icons
	9	High and Low Alarm set point icons
	10	Statistical icons
	11	4 digit numerical display

Using the Logger

Attach the logger to the outside of the storage unit and place the glycol bottle inside. Ideal positioning of the bottle should be as close to the center of the unit as possible.

Starting Data Logger

If the logger is configured for manual start, press and hold the **START** button, “**Strt**” appears on the LCD. Release the **START** button after temperature is displayed.

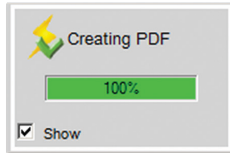
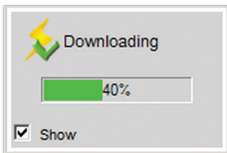
Once the glycol bottle is acclimated inside the storage unit, it will closely emulate the temperature of vaccines and other fluids within.

Downloading Logger Data and Generating Reports

Detach the logger from the sensor, leave the glycol bottle inside the storage unit. Connect the logger to the USB port of a computer.

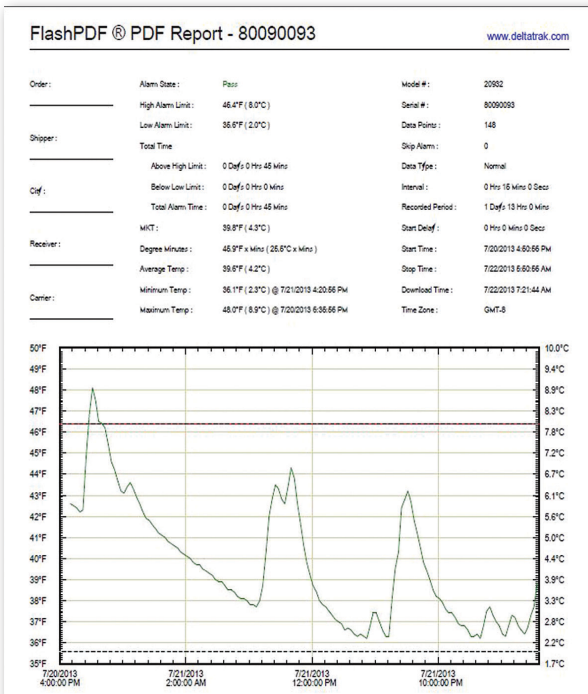
If FlashPDF Program Manager is installed on the computer, the software will automatically access and download recorded data from the logger.

A PDF report appears on the monitor and is automatically saved on the PC.



A Downloading dialog box should appear on the lower right hand corner of the computer screen indicating that information is being downloaded.

Once the information is downloaded, FlashPDF will show **Creating PDF** then **Success** in the same dialog box.



The FlashPDF Report will automatically show on screen.

A temperature graph will display the entire data logging sequence. The Date and Time readings are listed on the graph.

#	Time	F (C)
1	7/20/2013 5:06:56 PM	42.6 (5.9)
2	7/20/2013 5:20:56 PM	42.4 (5.7)
3	7/20/2013 5:35:56 PM	42.2 (5.7)
4	7/20/2013 5:50:56 PM	42.3 (5.7)
5	7/20/2013 6:06:56 PM	44.9 (7.1)
6	7/20/2013 6:20:56 PM	46.8 (8.2)
7	7/20/2013 6:35:56 PM	48.1 (8.9)
8	7/20/2013 6:50:56 PM	47.5 (8.6)
9	7/20/2013 7:06:56 PM	46.5 (8.0)
10	7/20/2013 7:20:56 PM	46.4 (8.0)
11	7/20/2013 7:35:56 PM	46.2 (7.9)
12	7/20/2013 7:50:56 PM	45.4 (7.4)

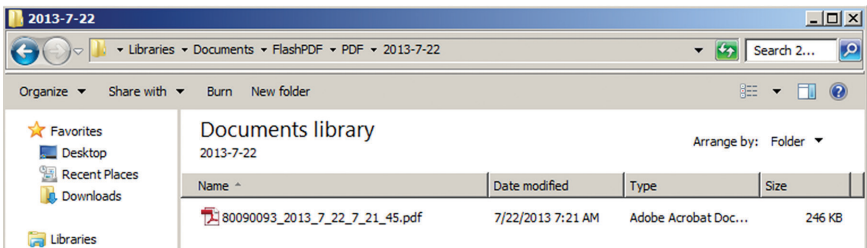
The second page will display the Data Table information, listing all data points that were recorded

Reports: Generating a PDF or CSV File

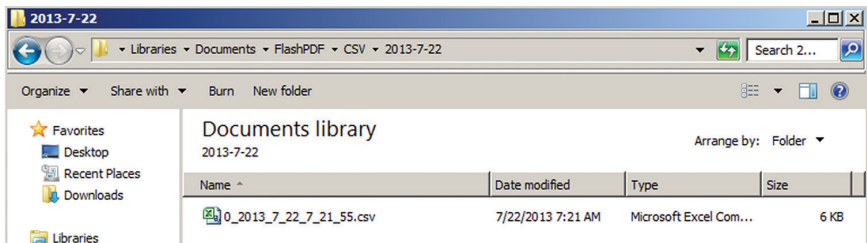
FlashPDF Program Manager automatically generates both PDF and CSV files for reporting. The files are placed in a folder and automatically named with the logger serial number, date and time of download.

The locations of the files are:

/My Documents/FlashPDF/PDF

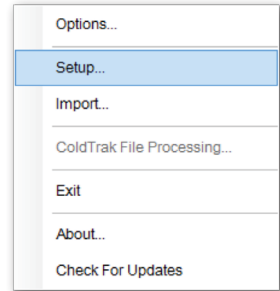


/My Documents/FlashPDF/CSV

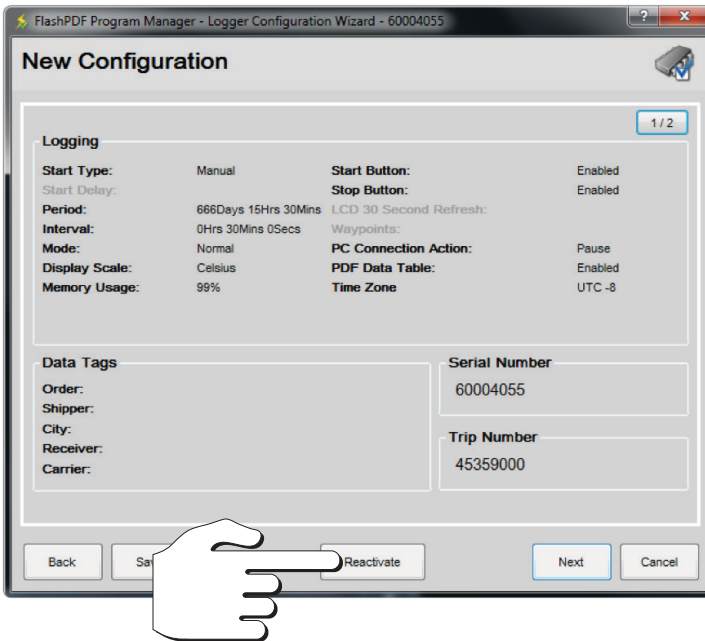


Resetting the Logger for Next Use

Once the logger information has been downloaded, locate the FlashPDF Program Manager Icon and single **right click** on it. Click **Setup** in menu to open the configuration screen.



Click on the **Reactivate** button in the lower center of the New Configuration dialog box. The logger will be configured with the same settings as previous logging period



Click **OK** and **Finish**. Disconnect the logger from the computer. Reconnecting the logger to the cable can be done without removing the glycol bottle from the storage unit.

Troubleshooting




Call Tech Support at: Phone: 925-249-2250 Ext 5120

Toll Free 800-390-0804 USA & Canada

Email: techsupport@deltatrak.com







DeltaTrak Corporate

 P.O. Box 398 Pleasanton CA 94566
 (925) 249-2250
(800) 962-6776
 www.deltatrak.com

DTI Mexico International

 Av. Paso de la Arboleda #1167 Col.
Rinconada del Bosque Guadalajara,
Jalisco, Mexico
 +52-33-3188-3161 / 36712190
 www.deltatrakmexico.com

DTI South America SA

 A. Raul Labbe 12613 of 412
Lo Barnechea (7690554), Santiago, Chile
 +569-9825-5630  +569 9825 5630
 www.deltatraksouthamerica.com

DTI Europe bvba

 J.F. Gellyncklaan 33
B-2540 Hove (Antwerp) Belgium
 +32 (0) 3-455-61-25
 www.deltatrakeurope.be

DTI China Limited

 No. 6-A Dong Sha Road
Shui Tou Sha Village, Nan Ao Town
Longgang District, Shenzhen
China 518121
 +86-755-8442-9388/8442-9007
 www.deltatrakchina.com.cn

DTI Asia Pacific

 Rm. 1010-1011, 10F, Wing Hing Ind. Bldg
83-93 Chai Won Kok Street
Tsuen Wan, NT Hong Kong
 +852-3568-5538
 www.dtiap.com

DTI Japan Limited

 4F ITM ATC., 2-1-10
Nanko-kita Suminoe-ward
Osaka City, Osaka 559-0034 Japan
 +81-6-6616-5900
 www.dtijapan.co.jp