

SECTION A - DECORATIVE

Decorative Kitchen 3-5
Decorative Bathroom 6-28



Disposal Assembly

Fits In-Sink-Erator



- Also acts as a basket strainer
- All stainless steel construction
- Positive stopper
- PVD on Polished Nickel
- Clamshell or box package

CLAM SHELL	BOX	FINISH	CTN QTY
B03004	B03004B	Almond	1
B03003	B03003B	Biscuit	1
B03005	B03005B	Black	1
B03408	—	Brushed Nickel	1
B03401	—	Brushed Stainless	1
B03406	—	Oil Rubbed Bronze	1
B03407	—	Old World Bronze	1
B03001	B03001B	Polar White	1
B03405	—	Polished Nickel (PVD)	1
B03400	—	Polished Stainless	1

Basket Strainers



- Simple to install, operate and maintain
- Positive Seal
- Stainless steel flange and basket
- Positive seal
- PVD on Polished Nickel
- Clamshell or box packaging

PART NO.	FINISH	CTN QTY
B02004	Almond	1
B02404	Antique Nickel	1
B02003	Biscuit	1
B02005	Black	1
B02408	Brushed Nickel	1
B02401	Brushed Stainless	1
B02406	Oil Rubbed Bronze	1
B02407	Old World Bronze	1
B02001	Polar White	1
B02405	Polished Nickel (PVD)	1
B02400	Polished Stainless	1

Replacement Basket Strainers



PART NO.	FINISH	FITS PART NO.	CTN QTY
B02304	Almond	B02004	1
B02303	Biscuit	B02003	1
B02305	Black	B02005	1
B0240BN	Brushed Nickel	B02408	1
B0240BS	Brushed Stainless	B02401	1
B0240RB	Oil Rubbed Bronze	B02406	1
B0240WB	Old World Bronze	B02407	1
B02301	Polar White	B02001	1
B0240PN	Polished Nickel	B02405	1
B0240PS	Polished Stainless	B02400	1

Polished Brass Basket Strainers



- All metal construction with polished brass finish

PART NO.	FINISH	CTN QTY
B02008	Polished Brass	1

Duo Strainer



- PVD finish on Brushed Nickel
- Cast brass

PART NO.	FINISH	CTN QTY
S14007	Chrome Plated	1
S1407BN	Brushed Nickel	1
S1407RB	Oil Rubbed Bronze	1
S1407WB	Old World Bronze	1
S1407NP	Pearl Nickel	1

Junior Duo Basket Strainer



- Complete with nuts and washers

PART NO.	FINISH	CTN QTY
B02050	Chrome Plated	1
B0250BN	Brushed Nickel	1
B0250RB	Oil Rubbed Bronze	1
B0250WB	Old World Bronze	1
B0250NP	Pearl Nickel	1
B02100	Polished Brass	1

Deep Junior Duo Basket Strainer



- Polished brass body
- Complete with nuts and washers
- For 2" and 2 1/2" outlets

PART NO.	FINISH	CTN QTY
B02102	Chrome Plated	1
B02101	Polished Brass	1

A

Dispenser Faucet



- 9-1/2" high
- Poly bagged
- Ceramic cartridge
- Quarter-turn handle
- Sleek European design
- For use with cold water only
- Manufactured of Celcon- will not crack, chip or peel
- Blister card packaging with 1/4" and 3/8" adapters

PART NO.	FINISH	CTN QTY
B70013	Almond	1
B70012	Biscuit	1
B70014	Black	1
B70020	Black body gold spout	1
B70017	White body chrome spout	1

Lotion And Soap Dispenser with Brass Pump



- 2" spout
- All brass pump
- Seven ounce poly bottle
- Blister card packaging

PART NO.	FINISH	CTN QTY
S08020	Chrome	1
S10022	Biscuit	1
S10023	Black	1
S10025	Brushed Nickel (PVD)	1
S10024	Oil Rubbed Bronze	1
S10021	Polar White	1
S10020	Polished Brass	1

Bar Tap Faucet



- Lead Free
- All brass construction
- 1/2" connection
- Epoxy coated
- 1/4" inlet
- 6-1/2" high
- Blister card packaging

PART NO.	FINISH	CTN QTY
B70009	Biscuit	1
B70003	Black	1
B70008	Brushed Nickel	1
B70007	Oil Rubbed Bronze	1
B70004	Old World Bronze	1
B70001	Polar White	1
B70006	Polished Brass	1

Cock Hole Cover



- 1-3/4" diameter top

PART NO.	FINISH	MATERIAL	CTN QTY
B1020AL	Almond	Stainless Steel	1
B1020AB	Antique Brass	Brass	1
B1020AN	Antique Nickel	Brass	1
B1020BI	Biscuit	Stainless Steel	1
B1020BL	Black	Stainless Steel	1
B1020BN	Brushed Nickel (PVD)	Brass	1
B1020RB	Oil Rubbed Bronze	Brass	1
B1020WB	Old World Bronze	Brass	1
B1020NP	Pearl Nickel (PVD)	Brass	1
B1020PW	Polar White	Stainless Steel	1
B1020PN	Polished Nickel	Brass	1
B1020PS	Polished Stainless (PVD)	Brass	1

Decorative Hose And Spray



- Blister card packaging with 1/4" universal coupling adapter

PART NO.	FINISH	CTN QTY
K52011	Biscuit	10
K52013	Black	10
K52014	Brushed Nickel	10
K52016	Oil Rubbed Bronze	10
K52017	Old World Bronze	10
K52010	Polar White	10

Celcon Faucet Hole Cover



- Molded Celcon- will not chip or peel
- Blister card packaging
- 1-3/4" diameter top

PART NO.	FINISH	CTN QTY
C06011	Chrome	1
C06007	Almond	1
C06006	Biscuit	1
C06008	Black	1
C06014	Brushed Nickel	1
C06005	Euro White	1
C06016	Oil Rubbed Bronze	1
C06013	Old World Bronze	1
C06017	Pearl Nickel (PVD)	1
C06004	Polar White	1
C06018	Polished Nickel (PVD)	1

Faucet Hole Cover



- Screw down type
- Fit all
- 1-3/4" diameter top
- Made of ABS

PART NO.	FINISH	CTN QTY
C06002	Almond	1
C06001	Polar White	1

Faucet Hole Cover



- Heavy duty brass construction
- 1-3/4" diameter top

PART NO.	FINISH	CTN QTY
C06021	Brushed Stainless	1
C06024	Polished Nickel	1
C06020	Polished Stainless	1

Decorative Air Gap



- Protects dishwasher from sewage backflow
- Boxed
- UPC listed

PART NO.	FINISH	CTN QTY
A10001	Chrome Plated	
A10011	Polar White	50
A10010	Polished Brass	50

Decorative Air Gap Cover



- Replaces chrome cover on most air gaps
- Blister card packaging

PART NO.	FINISH	CTN QTY
A10015	Chrome	1
A10005	Almond	1
A10004	Biscuit	1
A10006	Black	1
A10018	Brushed Nickel	1
A10003	Euro White	1
A10017	Oil Rubbed Bronze	1
A10019	Old World Bronze	1
A10002	Polar White	1

A

Pop-up Vessel Drain



- With overflow holes
- 18 gauge
- 4" Drain Body
- 8" Brass Tailpiece
- Decorative finish covers all metal parts including tailpiece and lock nut.
- Tailpiece opening – 1-1/4" OD
- Fits sinks with 1-1/2" drain hole

PART NO.	FINISH	CTN QTY
P35033	Chrome Plated	1
P3503BN	Brushed Nickel	1
P3503RB	Oil Rubbed Bronze	1
P3503WB	Old World Bronze	1

Grid Vessel Drain



- Without overflow holes
- 18 gauge
- 4" Drain Body
- 8" Brass Tailpiece
- Decorative finish covers all metal parts including tailpiece and lock nut.
- Tailpiece opening – 1-1/4" OD
- Fits sinks with 1-1/2" drain hole

PART NO.	FINISH	CTN QTY
D70205	Chrome Plated	1
D7020BN	Brushed Nickel	1
D7020RB	Oil Rubbed Bronze	1
D7020WB	Old World Bronze	1

Polished Brass Pop-Up Assembly



- PVD durable finish
- All metal construction
- Tool free locknut and ballrod nut
- 1-1/4" tubular
- 17 gauge
- Boxed

PART NO.	FINISH	CTN QTY
P35001	Chrome Plated	25
P35002	Polished Brass	10

Replacement Parts

PART NO.	DESCRIPTION	CTN QTY
P35920	Plunger	25
P35921	Flange	25
P35922	Lift Rod	25

Lav Lift & Turn Drain Without Overflow Holes



- For vessel sinks
- Tailpiece opening- 1-1/4" OD
- 3" Drain Body
- 4-3/4" Brass Tailpiece
- Blister card packaging

PART NO.	FINISH	CTN QTY
P35003	Chrome Plated	1
P3500BN	Brushed Nickel (PVD)	1
P3500RB	Oil Rubbed Bronze	1
P3500WB	Old World Bronze	1
P3500NP	Pearl Nickel (PVD)	1
P3500PB	Polished Brass	1

Lav Drain Without Overflow



- For vessel sinks
- Tailpiece opening- 1-1/4" OD
- 2-1/4" Drain Body
- 6" (5-7/8") Brass Tailpiece
- Blister card packaging

PART NO.	FINISH	CTN QTY
D70105	Chrome Plated	1
D7010BN	Brushed Nickel	5
D7010RB	Oil Rubbed Bronze	5
D7010WB	Old World Bronze	5
D7010NP	Pearl Nickel	5
D7010PB	Polished Brass	5

Brass Tubular P-Trap



- 17 gauge
- Brass slip joint nut and rubber washers

PART NO.	OD	FINISH	CTN QTY
P3892BN	1-1/4"	Brushed Nickel	1
P3892RB	1-1/4"	Oil Rubbed Bronze	1
P3892WB	1-1/4"	Old World Bronze	1
P3892NP	1-1/4"	Pearl Nickel	1
P36125	1-1/4"	Polished Brass	12
P36150	1-1/2"	Polished Brass	12
P3892PB	1-1/4"	Polished Brass (PVD)	1

Brass Tubular P-Trap w/Box Escutcheon



- 17 gauge
- Brass slip joint nut and rubber washers

PART NO.	OD	FINISH	CTN QTY
P3450CP	1-1/4"	Chrome Plated	1
P3450BN	1-1/4"	Brushed Nickel	1
P3450RB	1-1/4"	Oil Rubbed Bronze	1

Polished Brass Finished P-Trap



- Complete with nuts, washers and escutcheons
- Plastic

PART NO.	SIZE	CTN QTY
P36100	1-1/4"	1
P36101	1-1/2"	1

Slip Joint Extension Tube



- 17 gauge
- Brass slip joint nut and rubber washers

PART NO.	SIZE	FINISH	CTN QTY
P3819BN	1-1/4" x 8"	Brushed Nickel	1
P3819RB	1-1/4" x 8"	Oil Rubbed Bronze	1

Offset Bath Supplies



- Chrome plated
- 1/2" supply tubes
- All hardware needed for connection included

PART NO.	DESCRIPTION	CTN QTY
B49020	Single offset (pair)	6
B49021	Double offset (pair)	6
B49022	Replacement nuts, washers and escutcheons	6

Polished Brass Shower Rod Flange With Set Screws



- Includes: two flanges, two set screws and four wood screws

PART NO.	FINISH	CTN QTY
S03152	Shower Rod Flange	1

Polished Brass Jiffy Rod Flanges



- Die Cast

PART NO.	FINISH	CTN QTY
S03151	Metal Jiffy Rod Holder	1

Shower Diverter Valve



- Installs between arm and shower head
- Allows usage of hand-held shower or shower head
- Not a positive shut off

PART NO.	FINISH	CTN QTY
S01070	Chrome Plated	1
S01071	Brushed Nickel	1
S01072	Oil Rubbed Bronze	1
S01073	Old World Bronze	1

3" Adjustable Shower Head



- 2.5 GPM
- Solid Brass

PART NO.	FINISH	CTN QTY
S01010	Chrome Plated	1
S0101BN	Brushed Nickel	1
S0101RB	Oil Rubbed Bronze	1
S0101WB	Old World Bronze	1

Polished Brass Shower Head & Kit



- Shower head is solid brass with PVD finish
- Adjustable
- 2.5 GPM at 80 psi

PART NO.	DESCRIPTION	CTN QTY
S03009	2-1/4" face adjustable	1
S03051	Kit includes arm & flange w/set screws	1

Classic Shower Head



- 1/2" swivel connection
- 2.5 GPM at 80 PSI

PART NO.	FINISH	SIZE	CTN QTY
S01087	Chrome Plated	5"	1
S0187BN	Brushed Nickel	5"	1
S0187RB	Oil Rubbed Bronze	5"	1
S0187WB	Old World Bronze	5"	1
S01187	Polished Brass	5"	1

Round Shower Head With Tips



- 1/2" swivel connection
- 2.5 GPM at 80 PSI

PART NO.	FINISH	SIZE	CTN QTY
S01084	Chrome Plated	6"	1
S0184BN	Brushed Nickel	6"	1
S0184RB	Oil Rubbed Bronze	6"	1
S0184WB	Old World Bronze	6"	1
S01184	Polished Brass	6"	1

PART NO.	FINISH	SIZE	CTN QTY
S01085	Chrome Plated	8"	1
S0185BN	Brushed Nickel	8"	1
S0185RB	Oil Rubbed Bronze	8"	1
S0185WB	Old World Bronze	8"	1
S01185	Polished Brass	8"	1

PART NO.	FINISH	SIZE	CTN QTY
S01086	Chrome Plated	10"	1
S0186BN	Brushed Nickel	10"	1
S0186RB	Oil Rubbed Bronze	10"	1
S0186WB	Old World Bronze	10"	1
S01186	Polished Brass (PVD)	10"	1

A

Round Rain Style Shower Head with Dimples



- 1/2" swivel connection
- 2.5 GPM at 80 PSI

PART NO.	FINISH	SIZE	CTN QTY
S01088	Chrome Plated	5"	1
S0188BN	Brushed Nickel	5"	1
S0188RB	Oil Rubbed Bronze	5"	1
S0188WB	Old World Bronze	5"	1

PART NO.	FINISH	SIZE	CTN QTY
S01089	Chrome Plated	8"	1
S0189BN	Brushed Nickel	8"	1
S0189RB	Oil Rubbed Bronze	8"	1
S0189WB	Old World Bronze	8"	1

Round Shower Head With Gold Tips



- Chrome plated body with gold tips (removable)
- 2.5 GPM at 80 PSI

PART NO.	SIZE	CTN QTY
S01090	5"	20
S01091	9"	12

Shower Head with Rubber Tips



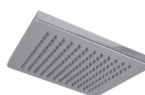
- 2.5 GPM at 80psi
- Chrome & Brushed Nickel finishes have grey tips
- Oil Rubbed Bronze & Old World Bronze finishes have black tips

PART NO.	FINISH	SIZE	CTN QTY
S01096	Chrome Plated	10"	1
S0196BN	Brushed Nickel	10"	1
S0196RB	Oil Rubbed Bronze	10"	1
S0196WB	Old World Bronze	10"	1



- 2.5 GPM at 80psi
- Chrome & Brushed Nickel finishes have grey tips
- Oil Rubbed Bronze & Old World Bronze finishes have black tips

PART NO.	FINISH	SIZE	CTN QTY
S01092	Chrome Plated	8"	1
S0192BN	Brushed Nickel	8"	1
S0192RB	Oil Rubbed Bronze	8"	1
S0192WB	Old World Bronze	8"	1
S01093	Chrome Plated	10"	1
S0193BN	Brushed Nickel	10"	1
S0193RB	Oil Rubbed Bronze	10"	1
S0193WB	Old World Bronze	10"	1



- 2.5 GPM at 80psi
- Chrome & Brushed Nickel finishes have grey tips
- Oil Rubbed Bronze & Old World Bronze finishes have black tips

PART NO.	FINISH	SIZE	CTN QTY
S01094	Chrome Plated	8"	1
S0194BN	Brushed Nickel	8"	1
S0194RB	Oil Rubbed Bronze	8"	1
S0194WB	Old World Bronze	8"	1
S01095	Chrome Plated	10"	1
S0195BN	Brushed Nickel	10"	1
S0195RB	Oil Rubbed Bronze	10"	1
S0195WB	Old World Bronze	10"	1

S-Shaped Shower Arm



- 18" length
- Adds 12" to height
- 1/2" female threads
- Fixed escutcheon

PART NO.	FINISH	CTN QTY
S01055	Chrome Plated	1
S0155BN	Brushed Nickel	1
S0155RB	Oil Rubbed Bronze	1
S0155WB	Old World Bronze	1
S01155	Polished Brass (PVD)	1

S-Shaped Shower Arm



- Chrome plated brass
- 8" or 10" length

PART NO.	DESCRIPTION	CTN QTY
S01035	8" arm	1
S01038	10" arm	1

Ceiling Mount Shower Arm



- 1/2" female threads
- Fixed escutcheon

1/2" x 6"

PART NO.	FINISH	CTN QTY
S01051	Chrome Plated	10
S0151BN	Brushed Nickel	10
S0151RB	Oil Rubbed Bronze	10
S0151WB	Old World Bronze	10
S01151	Polished Brass (PVD)	10

1/2" x 12"

PART NO.	FINISH	CTN QTY
S01052	Chrome Plated	10
S0152BN	Brushed Nickel	10
S0152RB	Oil Rubbed Bronze	10
S0152WB	Old World Bronze	10
S01152	Polished Brass (PVD)	10

1/2" x 18"

PART NO.	FINISH	CTN QTY
S01053	Chrome Plated	10
S0153BN	Brushed Nickel	10
S0153RB	Oil Rubbed Bronze	10
S0153WB	Old World Bronze	10
S01153	Polished Brass (PVD)	10

90° Shower Arm With Flange



- 18" length
- 1/2" female threads
- Fixed escutcheon

PART NO.	FINISH	CTN QTY
S01056	Chrome Plated	1
S0156BN	Brushed Nickel	1
S0156RB	Oil Rubbed Bronze	1
S0156WB	Old World Bronze	1
S01156	Polished Brass	1

Raised Bend Shower Arm



- 18" length
- 1/2" female threads
- Fixed escutcheon

PART NO.	FINISH	CTN QTY
S01057	Chrome Plated	1
S0157BN	Brushed Nickel	1
S0157RB	Oil Rubbed Bronze	1
S0157WB	Old World Bronze	1
S01157	Polished Brass (PVD)	1

Double Offset Shower Arm



- 18" length
- 1/2" female threads
- Adds 12" to height
- Fixed escutcheon

PART NO.	FINISH	CTN QTY
S01058	Chrome Plated	1
S0158BN	Brushed Nickel	1
S0158RB	Oil Rubbed Bronze	1
S0158WB	Old World Bronze	1
S01158	Polished Brass (PVD)	1

Shower Arm



- Solid Brass
- Fits E02 series escutcheons

68" Arm

PART NO.	FINISH	CTN QTY
S01030	Chrome Plated	1
S0130BN	Brushed Nickel	1
S0130RB	Oil Rubbed Bronze	1
S0130WB	Old World Bronze	1

8" Arm

PART NO.	FINISH	CTN QTY
S01032	Chrome Plated	1
S0132BN	Brushed Nickel	1
S0132RB	Oil Rubbed Bronze	1
S0132WB	Old World Bronze	1

Polished Brass Shower Arm

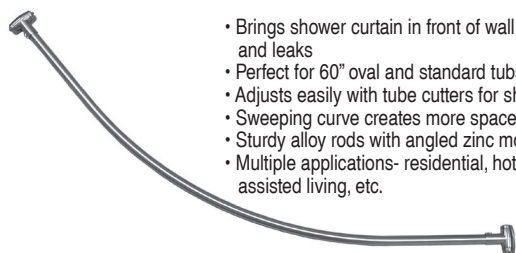


- Solid Brass
- Fits E81050 escutcheon

PART NO.	DESCRIPTION	CTN QTY
S03030	1/2" x 6"	1
S03032	1/2" x 8"	1
S01036	1/2" x 8" s-style	1
S01037	1/2" x 10" s-style	1

A

Contoured Shower Curtain Rods



- Brings shower curtain in front of wall to prevent gaps and leaks
- Perfect for 60" oval and standard tubs
- Adjusts easily with tube cutters for shower walls
- Sweeping curve creates more space in center of tub
- Sturdy alloy rods with angled zinc mounting brackets
- Multiple applications- residential, hotel, motel, assisted living, etc.

PART NO.	FINISH	CTN QTY
S02190	Chrome Plated	1
S02191	Polar White	1
S02193	Satin Nickel	1

PART NO.	FINISH	CTN QTY
S02290	Chrome Flanges (Fits S02190)	1
S02293	Satin Nickel Flanges (Fits S02193)	1
S02291	White Flanges (Fits S02191)	1

Cover Plates

- Mirrored acrylic
- Conceals damaged/cracked tiles
- Fits all standard bath/shower fittings
- No tools required-use silicone caulk
- DO NOT use abrasive cleaners



PART NO.	DESCRIPTION	SIZE	CTN QTY
T73001	Tub spout model	3-1/2" diameter	1
T73002	One handle model	8" x 14"	1
T73003	Two handle model	6" x 14"	1
T73004	Three handle model	6" x 14"	1

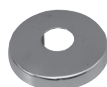
Polished Stainless Steel Repair Cover Plates

- 1, 2 or 3 hole design to fit multitude of valves
- Polished stainless steel finish
- Easily attaches with silicone caulk; one hole has brackets and screw
- 7-1/4" x 13" long



PART NO.	# OF HOLES	DIAMETER	CTN QTY
T73815	1	5-1/8"	1
T73816	2	1-3/8"	1
T73817	3	1-3/8"	1
T73818	1	3-3/4"	1

Polished Brass Shower Arm Flange



- The S03-040 is die cast with a set screw
- Poly bagged

PART NO.	DESCRIPTION	CTN QTY
S03040	1/2" with set screw	5

Polished Brass TubSpouts



- PVD durable finish
- All brass
- Boxed

PART NO.	DESCRIPTION	MATERIAL	CONNECTION	CTN QTY
D03016	3/4" x 1/2" x 8-1/2"	Brass	Base	1



- Brass plated zamak
- Boxed

PART NO.	DESCRIPTION	MATERIAL	CONNECTION	CTN QTY
D03020	1/2" FIP	Zamak	Nose	1

Polished Brass Diverter Spouts



- PVD durable finish
- Brass plated zamak
- Boxed

PART NO.	DESCRIPTION	MATERIAL	CONNECTION	CTN QTY
D03001	1/2" FIP	Zamak	Nose	1



- PVD durable finish
- Brass plated zamak
- Boxed

PART NO.	DESCRIPTION	MATERIAL	CONNECTION	CTN QTY
D03002	3/4" x 1/2" FIP	Zamak	Base	1
D03004	1/2" CTS (5/8" OD) Slip-on with hex key	Zamak	Base	1



- Brass plated zamak
- Boxed

PART NO.	DESCRIPTION	MATERIAL	CONNECTION	CTN QTY
D03010	3/4" x 1/2" FIP with 1/2" top connection for hand-held shower	Zamak	Base	1



- Brass plated zamak
- Boxed

PART NO.	DESCRIPTION	MATERIAL	CONNECTION	CTN QTY
D03011	3/4" x 1/2" FIP with 1/2" bottom connection for hand-held shower	Zamak	Base	1



- PVD durable finish
- All brass
- Boxed

PART NO.	DESCRIPTION	MATERIAL	CONNECTION	CTN QTY
D03015	3/4" x 1/2" x 8-1/2" long	Brass	Base	1

Chrome Plated Diverter Spouts and Extensions

8-1/2" One Piece Diverter Spout



- All brass
- Boxed

PART NO.	DESCRIPTION	MATERIAL	CONNECTION	CTN QTY
D01015	3/4" x 1/2" FIP	Brass	Base	1

Extension Only



- All brass

PART NO.	DESCRIPTION	MATERIAL	CTN QTY
D01030	3" extension only	CP Brass	1
D01031	4-3/4" extension only	CP Brass	1

Diverter Spout for Hand Held Shower



- Chrome plated zamak

PART NO.	DESCRIPTION	MATERIAL	CONNECTION	CTN QTY
D01010	3/4" x 1/2" FIP top hookup	Zamak	Base	10
D01011	3/4" x 1/2" MIP lower hookup	Zamak	Base	10

7" Chrome Plated Diverter Spout



- Longer length for today's larger tubs
- CTS unit comes with hex key
- Chrome plated zamak

PART NO.	CONNECTION	CTN QTY
D01024	1/2" FIP Nose	25
D01025	1/2" CTS Nose	25

Chrome Plated Diverter Spout with Polished Brass Knob



- Brass plated zamak or all brass
- Boxed

PART NO.	DESCRIPTION	MATERIAL	CONNECTION	CTN QTY
D01032	CP slip on diverter with PB knob	Zamak	Base	1

Chrome Plated Tub Spouts

Chrome Plated Zamak



- Key included in slide connection

PART NO.	DESCRIPTION	MATERIAL	CONNECTION	CTN QTY
D01020	1/2" FIP	CP Zamak	Nose	10
D01021	1/2" CTS Slide	CP Zamak	Base	10

8-1/2" One Piece Chrome Plated Brass



PART NO.	DESCRIPTION	MATERIAL	CONNECTION	CTN QTY
D01016	3/4" x 1/2" FIP	CP Brass	Base	1

9" Chrome Plated Tub & Diverter Spout



- One piece design
- 1/2" nose connection
- Solid brass construction

PART NO.	DESCRIPTION	CTN QTY
D01017	9" CP brass diverter spout	1
D01018	9" CP brass tub spout	1

7" Chrome Plated Tub Spout



- CTS unit comes with hex key
- Longer length for today's larger tubs
- Chrome plated zamak

PART NO.	SIZE	CONNECTION	CTN QTY
D01026	7"	1/2" FIP Nose	25
D01027	7"	1/2" CTS Slide	25

Decorative Ring for Tub Spouts & Diverter



- Adds decorative touch to any tub spout or diverter
- Fits between the wall and the tub spout or diverter
- 3-5/16" OD 2-3/8" ID

PART NO.	FINISH	CTN QTY
D01050	Chrome Plated	1
D01050BN	Brushed Nickel	1
D01050RB	Oil Rubbed Bronze	1
D01050WB	Old World Bronze	1

A

Tub Trip Lever with Spring



• Includes screws

PART NO.	FINISH	# OF HOLES	CTN QTY
T05003	Chrome Plated	2	25
T08003	Polished Brass	2	1
T08004	PVD Polished Brass	2	1

Overflow Plates



• Includes screws

PART NO.	FINISH	# OF HOLES	CTN QTY
T08012	Polished Brass	1	1
T08013	Polished Brass	2	1
P35616	Satin Nickel	2	1
T05015	White	2	1

PVD Polished Brass Overflow Plates



• Includes screws

PART NO.	FINISH	# OF HOLES	CTN QTY
T08112	PVD Durable Finish	1	1
T08113	PVD Durable Finish	2	1

Waste And Overflow Faceplate with Screw



• Includes screws

PART NO.	FINISH	# OF HOLES	CTN QTY
T05012	Chrome Plated	1	25
T0812BN	Brushed Nickel	1	1
T0812RB	Oil Rubbed Bronze	1	1
T0812WB	Old World Bronze	1	1
T0812NP	Pearl Nickel	1	1

Polished Brass Bath Waste Conversion Kits



- Converts regular bath waste to polished brass
- Fits 1-3/8" or 1-1/2" waste elbows
- Includes drain, bushing, face plate, and 2 screws
- Blister card packaging

For Trip Lever Wastes

PART NO.	SIZE	# OF HOLES	CTN QTY
B51001	1-1/2" and 1-3/8"	2	12

For Toe Touch Wastes

PART NO.	SIZE	# OF HOLES	CTN QTY
B51002	1/2" and 1-3/8"	2	12

For Lift and Turn Wastes

PART NO.	SIZE	# OF HOLES	CTN QTY
B51003	1/2" and 1-3/8"	2	12
B51020	1/2" and 1-3/8"	1	12

Decorative Lift And Turn Conversion Kit



- 1- Hole faceplate
- Clamshell packaging
- Aluminum adapter bar
- 1-3/8" drain with bushing
- Includes drain, bushing, face plate and screw
- Blister card packaging

PART NO.	FINISH	# OF HOLES	CTN QTY
B51019	Chrome Plated	1	1
B5160AP	Antique Pewter	1	1
B5160BB	Brushed Bronze	1	1
B5160BN	Brushed Nickel	1	1
B5160BS	Brushed Stainless	1	1
B5160RB	Oil Rubbed Bronze	1	1
B5160WB	Old World Bronze	1	1
B5160NP	Pearl Nickel	1	1
B5160PN	Polished Nickel	1	1
B5160PS	Polished Stainless	1	1

Toe Touch Conversion Kit



- With aluminum adapter bar
- 1-3/8" drain with bushing, screw and faceplate
- Clamshell packaging

PART NO.	FINISH	# OF HOLES	CTN QTY
B51010	Chrome Plated	1	1
B5161AP	Antique Pewter	1	1
B5161BB	Brushed Bronze	1	1
B5161BN	Brushed Nickel	1	1
B5161RB	Oil Rubbed Bronze	1	1
B5161WB	Old World Bronze	1	1
B5161NP	Pearl Nickel	1	1
B5161PS	Polished Stainless	1	1

Lift And Turn Conversion Kit



- 1-3/8" drain with bushing, screw and faceplate
- Clamshell packaging
- 2-hole faceplate

PART NO.	FINISH	# OF HOLES	CTN QTY
B51005	Chrome Plated	2	1
B5155AL	Almond	2	1
B5155AB	Antique Brass	2	1
B5155AN	Antique Nickel	2	1
B5155AP	Antique Pewter	2	1
B5155BI	Biscuit	2	1
B5155BL	Black	2	1
B5155BB	Brushed Bronze	2	1
B5155BN	Brushed Nickel	2	1
B5155BS	Brushed Stainless	2	1
B5155RB	Oil Rubbed Bronze	2	1
B5155WB	Old World Bronze	2	1
B5155NP	Pearl Nickel	2	1
B5155PW	Polar White	2	1
B5155PS	Polished Stainless	2	1
B51004	Satin Nickel	2	1

Toe Touch Conversion Kit



- Fits 1-3/8" or 1-1/2" waste elbows
- Includes drain, bushing, face plate and 2 screws
- Clamshell packaging
- 2-hole faceplate

PART NO.	FINISH	# OF HOLES	CTN QTY
B51007	Chrome Plated	2	1
B5156AP	Antique Pewter	2	1
B5156BB	Brushed Bronze	2	1
B5156BN	Brushed Nickel	2	1
B5156RB	Oil Rubbed Bronze	2	1
B5156WB	Old World Bronze	2	1
B5156NP	Pearl Nickel	2	1
B5156PS	Polished Stainless	2	1

Trip Lever Conversion Kit



- Fits 1-3/8" or 1-1/2" waste elbows
- Includes drain, bushing, face plate and 2 screws
- Clamshell packaging

PART NO.	FINISH	# OF HOLES	CTN QTY
B51015	Chrome Plated	2	1
B5112AP	Antique Pewter	2	1
B5112BI	Biscuit	2	1
B5112BB	Brushed Bronze	2	1
B5112BN	Brushed Nickel	2	1
B5112BS	Brushed Stainless	2	1
B5112RB	Oil Rubbed Bronze	2	1
B5112WB	Old World Bronze	2	1
B5112NP	Pearl Nickel	2	1
B5112PW	Polar White	2	1

Trip Lever Trim Only



- Clamshell packaging
- Includes faceplate, screws and strainer

PART NO.	FINISH	# OF HOLES	CTN QTY
B51014	Chrome Plated	2	1
B5114AP	Antique Pewter	2	1
B5114BB	Brushed Bronze	2	1
B5114BN	Brushed Nickel	2	1
B5114RB	Oil Rubbed Bronze	2	1
B5114WB	Old World Bronze	2	1
B5114NP	Pearl Nickel	2	1
B5114PB	Polished Brass	2	1
B5114PN	Polished Nickel	2	1
B5114PS	Polished Stainless	2	1

A Trip Lever Faceplate And Handle



• Less screws

PART NO.	FINISH	# OF HOLES	CTN QTY
T05002	Chrome Plated	2	1
P3566AL	Almond	2	1
P3566AB	Antique Brass	2	1
P3566AN	Antique Nickel	2	1
P3566BI	Biscuit	2	1
P3566BL	Black	2	1
P3566BN	Brushed Nickel	2	1
P3566BS	Brushed Stainless	2	1
P3566RB	Oil Rubbed Bronze	2	1
P3566WB	Old World Bronze	2	1
P3566NP	Pearl Nickel	2	1
P3566PW	Polar White	2	1
P3566PN	Polished Nickel	2	1
P3566PS	Polished Stainless	2	1

Two-Hole Overflow Faceplate & Screws



PART NO.	FINISH	# OF HOLES	CTN QTY
T05013	Chrome Plated	2	1
T0813BN	Brushed Nickel	2	1
T0813RB	Oil Rubbed Bronze	2	1
T0813WB	Old World Bronze	2	1
T0813NP	Pearl Nickel	2	1
T0813PW	Polar White	2	1

Waste And Overflow Faceplate Only



• Less screws

PART NO.	FINISH	# OF HOLES	CTN QTY
T05011	Chrome Plated	2	1
P3565AL	Almond	2	1
P3565AB	Antique Brass	2	1
P3565AN	Antique Nickel	2	1
P3565BI	Biscuit	2	1
P3565BL	Black	2	1
P3565BN	Brushed Nickel	2	1
P3565BS	Brushed Stainless	2	1
P3565RB	Oil Rubbed Bronze	2	1
P3565WB	Old World Bronze	2	1
P3565NP	Pearl Nickel	2	1
P3565PW	Polar White	2	1
P3565PN	Polished Nickel	2	1
P3565PS	Polished Stainless	2	1

PB Satin Nickel / Faceplate Screws



PART NO.	FINISH	SIZE	CTN QTY
T08021	Polished Brass	1/4" x 2"	25
P35615	Satin Nickel	1/4" x 2"	25

Waste And Overflow Faceplate Screws



PART NO.	FINISH	CTN QTY
T05021	Chrome Plated	1
T0521AL	Almond	1
T0521AB	Antique Brass	1
T0521AN	Antique Nickel	1
T0521BI	Biscuit	1
T0521BL	Black	1
T0521BN	Brushed Nickel	1
T0521BS	Brushed Stainless	1
T0521RB	Oil Rubbed Bronze	1
T0521WB	Old World Bronze	1
T0521NP	Pearl Nickel	1
T0521PW	Polar White	1
T0521PN	Polished Nickel	1
T0521PS	Polished Stainless	1

Flip-It Conversion Kit



- No tools needed for installation
- Open or close with a flip of the toe
- Fits most popular tub drains (assorted o-ring included)
- One piece construction Delrin and ABS

PART NO.	FINISH	CTN QTY
P35170	Chrome Plated	1
P35172	Brushed Nickel	1
P35171	Polished Brass	1

Flip-It Tub Stopper



- No tools needed for installation
- Open or close with a flip of the toe
- Fits most popular tub drains (assorted o-ring included)
- One piece construction Delrin and ABS

PART NO.	FINISH	CTN QTY
P35070	Chrome Plated	12
P35071	Polished Brass	12

Bath Drains



PART NO.	DESCRIPTION	CTN QTY
P35061	1-3/8" CP Lift and Turn Drain	
P35051	1-3/8" PB Lift and Turn Drain	1
P35060	1-1/2" CP Lift and Turn Drain	
P35050	1-1/2" PB Lift and Turn Drain	1
P35065	1-1/2" White Lift and Turn Drain	1



PART NO.	DESCRIPTION	CTN QTY
P35063	1-3/8" CP Pop-Up Drain	0
P35053	1-3/8" PB Pop-Up Drain	1
P35062	1-1/2" CP Pop-Up Drain	0
P35052	1-1/2" PB Pop-Up Drain	1



PART NO.	DESCRIPTION	CTN QTY
P35056	5/16" CP Pop-Up Cartridge	0
P35055	5/16" PB Pop-Up Cartridge	1



- 1-3/8" are fine threads
- 1-1/2" are course threads

PART NO.	DESCRIPTION	CTN QTY
T05024	1-3/8" female- 1-1/2" male bushing	1

Polished Brass/Satin Nickel Bath Drains



- PVD durable finish

PART NO.	DESCRIPTION	FINISH	CTN QTY
P35072	1-1/2" Lift and Turn Drain	Polished Brass	1
P35073	1-1/2" Pop-Up	Polished Brass	1
P35068	1-1/2" Friction Lift	Polished Brass	1
P35058	3/8" Pop-Up Replacement	Polished Brass	1
P35610	1-1/2" Lift and Turn Drain	Satin Nickel	1
P35611	1-1/2" Friction Lift	Satin Nickel	1
P35612	1-1/2" Toe Touch	Satin Nickel	1
P35613	1-1/2" Trip Lever Drain	Satin Nickel	1
P35614	1-1/2" Cable Drive Drain	Satin Nickel	1

Toe Touch Tub Drain



- 1-1/2" drain
- Course thread

PART NO.	FINISH	CTN QTY
P35062	Chrome Plated	1
P3562AL	Almond	1
P3562AB	Antique Brass	1
P3562AN	Antique Nickel	1
P3562BI	Biscuit	1
P3562BL	Black	1
P3562BN	Brushed Nickel	1
P3562BS	Brushed Stainless	1
P3562RB	Oil Rubbed Bronze	1
P3562WB	Old World Bronze	1
P3562NP	Pearl Nickel	1
P3562PW	Polar White	1
P3562PN	Polished Nickel	1
P3562PS	Polished Stainless	1

Trip Lever Body, Grid And Screw



- 1-1/2" drain
- Course thread

PART NO.	FINISH	CTN QTY
P35064	Chrome Plated	1
P3563AL	Almond	1
P3563AB	Antique Brass	1
P3563AN	Antique Nickel	1
P3563BI	Biscuit	1
P3563BL	Black	1
P3563BN	Brushed Nickel	1
P3563BS	Brushed Stainless	1
P3563RB	Oil Rubbed Bronze	1
P3563WB	Old World Bronze	1
P3563NP	Pearl Nickel	1
P3563PW	Polar White	1
P3563PN	Polished Nickel	1
P3563PS	Polished Stainless	1

A

Lift And Turn Tub Drain



- Solid Brass
- Body and stopper
- 1-1/2" drain
- Course thread

PART NO.	FINISH	CTN QTY
P35066	Chrome Plated	1
P3560AL	Almond	1
P3560AB	Antique Brass	1
P3560AN	Antique Nickel	1
P3560BI	Biscuit	1
P3560BL	Black	1
P3560BN	Brushed Nickel	1
P3560BS	Brushed Stainless	1
P3560RB	Oil Rubbed Bronze	1
P3560WB	Old World Bronze	1
P3560NP	Pearl Nickel	1
P3560PW	Polar White	1
P35050	Polished Brass	1
P3560PN	Polished Nickel	1
P3560PS	Polished Stainless	1
P35610	Satin Nickel	1

Friction Lift Tub Drain



- Solid Brass
- 1-1/2" drain
- Course thread

PART NO.	FINISH	CTN QTY
P35067	Chrome Plated	1
P3561AL	Almond	1
P3561AB	Antique Brass	1
P3561AN	Antique Nickel	1
P3561BI	Biscuit	1
P3561BL	Black	1
P3561BN	Brushed Nickel	1
P3561BS	Brushed Stainless	1
P3561RB	Oil Rubbed Bronze	1
P3561WB	Old World Bronze	1
P3561NP	Pearl Nickel	1
P3561PW	Polar White	1
P35068	Polished Brass	1
P3561PN	Polished Nickel	1
P3561PS	Polished Stainless	1
P35611	Satin Nickel	1

Standard One-Hole Schedule 40 Lift & Turn Half Kit



PVC#	ABS#	FINISH	CTN QTY
B07010	B07011	Chrome Plated	1
B0750BN	B0850BN	Brushed Nickel	1
B0750RB	B0850RB	Oil Rubbed Bronze	1
B0750WB	B0850WB	Old World Bronze	1
B0750NP	B0850NP	Pearl Nickel	1
B07014	B07015	Polished Brass	1

Standard One-Hole Schedule 40 Lift & Turn Full Kit



PVC#	ABS#	FINISH	CTN QTY
B07030	B07031	Chrome Plated	1
B0751BN	B0851BN	Brushed Nickel	1
B0751RB	B0851RB	Oil Rubbed Bronze	1
B0751WB	B0851WB	Old World Bronze	1
B0751NP	B0851NP	Pearl Nickel	1
B07034	B07035	Polished Brass	1

Standard One-Hole Schedule 40 Friction Lift Half Kit



PVC#	ABS#	FINISH	CTN QTY
B07052	B07053	Chrome Plated	1
B0752BN	B0852BN	Brushed Nickel	1
B0752RB	B0852RB	Oil Rubbed Bronze	1
B0752WB	B0852WB	Old World Bronze	1
B0752NP	B0852NP	Pearl Nickel	1
B07054	B07055	Polished Brass	1

Standard One-Hole Schedule 40 Friction Lift Full Kit



PVC#	ABS#	FINISH	CTN QTY
B07058	B07059	Chrome Plated	1
B0753BN	B0853BN	Brushed Nickel	1
B0753RB	B0853RB	Oil Rubbed Bronze	1
B0753WB	B0853WB	Old World Bronze	1
B0753NP	B0853NP	Pearl Nickel	1
B07060	B08060	Polished Brass	1

Standard One-Hole Schedule 40 Toe Touch Half Kit



PVC#	ABS#	FINISH	CTN QTY
B07012	B07013	Chrome Plated	24
B0754BN	B0854BN	Brushed Nickel	1
B0754RB	B0854RB	Oil Rubbed Bronze	1
B0754WB	B0854WB	Old World Bronze	1
B0754NP	B0854NP	Pearl Nickel	1
B07016	B07017	Polished Brass	1

Standard One-Hole Schedule 40 Toe Touch Full Kit



PVC#	ABS#	FINISH	CTN QTY
B07032	B07033	Chrome Plated	1
B0755BN	B0855BN	Brushed Nickel	1
B0755RB	B0855RB	Oil Rubbed Bronze	1
B0755WB	B0855WB	Old World Bronze	1
B0755NP	B0855NP	Pearl Nickel	1
B07036	B07037	Polished Brass	1

Standard Two-Hole Schedule 40 Lift & Turn Half Kit



PVC#	ABS#	FINISH	CTN QTY
B07110	B07111	Chrome Plated	1
B0711AL	B0811AL	Almond	1
B0711AB	B0811AB	Antique Brass	1
B0711AN	B0811AN	Antique Nickel	1
B0711BI	B0811BI	Biscuit	1
B0711BL	B0811BL	Black	1
B0711BN	B0811BN	Brushed Nickel	1
B0711BS	B0811BS	Brushed Stainless	1
B0711RB	B0811RB	Oil Rubbed Bronze	1
B0711WB	B0811WB	Old World Bronze	1
B0711NP	B0811NP	Pearl Nickel	1
B0711PW	B0811PW	Polar White	1
B07114	B07115	Polished Brass	1
B0711PN	B0811PN	Polished Nickel	1
B0711PS	B0811PS	Polished Stainless	1

Standard Two-Hole Schedule 40 Lift And Turn Full Kit



PVC#	ABS#	FINISH	CTN QTY
B07130	B07131	Chrome Plated	1
B0713AL	B0813AL	Almond	1
B0713AB	B0813AB	Antique Brass	1
B0713AN	B0813AN	Antique Nickel	1
B0713BI	B0813BI	Biscuit	1
B0713BL	B0813BL	Black	1
B0713BN	B0813BN	Brushed Nickel	1
B0713RB	B0813RB	Oil Rubbed Bronze	1
B0713WB	B0813WB	Old World Bronze	1
B0713NP	B0813NP	Pearl Nickel	1
B0713PW	B0813PW	Polar White	1
B07134	B07135	Polished Brass	1
B0713PN	B0813PN	Polished Nickel	1
B0713PS	B0813PS	Polished Stainless	1

Standard Two-Hole Schedule 40 Toe Touch Half Kit



PVC#	ABS#	FINISH	CTN QTY
B07112	B07113	Chrome Plated	1
B0717AL	B0817AL	Almond	1
B0717AB	B0817AB	Antique Brass	1
B0717AN	B0817AN	Antique Nickel	1
B0717BI	B0817BI	Biscuit	1
B0717BL	B0817BL	Black	1
B0717BN	B0817BN	Brushed Nickel	1
B0717BS	B0817BS	Brushed Stainless	1
B0717RB	B0817RB	Oil Rubbed Bronze	1
B0717WB	B0817WB	Old World Bronze	1
B0717NP	B0817NP	Pearl Nickel	1
B0717PW	B0817PW	Polar White	1
B07116	B07117	Polished Brass	1
B0717PN	B0817PN	Polished Nickel	1
B0717PS	B0817PS	Polished Stainless	1

A

Standard Two-Hole Schedule 40 Friction Lift Full Kit



PVC#	ABS#	FINISH	CTN QTY
B07158	B07159	Chrome Plated	1
B0716AL	B0816AL	Almond	1
B0716AB	B0816AB	Antique Brass	1
B0716AN	B0816AN	Antique Nickel	1
B0716BI	B0816BI	Biscuit	1
B0716BL	B0816BL	Black	1
B0716BN	B0816BN	Brushed Nickel	1
B0716BS	B0816BS	Brushed Stainless	1
B0716RB	B0816RB	Oil Rubbed Bronze	1
B0716WB	B0816WB	Old World Bronze	1
B0716NP	B0816NP	Pearl Nickel	1
B0716PW	B0816PW	Polar White	1
B07160	B07161	Polished Brass	1
B0716PN	B0816PN	Polished Nickel	1
B0716PS	B0816PS	Polished Stainless	1

Standard Two-Hole Schedule 40 Toe Touch Full Kit



PVC#	ABS#	FINISH	CTN QTY
B07132	B07133	Chrome Plated	1
B0718AL	B0818AL	Almond	1
B0718AB	B0818AB	Antique Brass	1
B0718AN	B0818AN	Antique Nickel	1
B0718BI	B0818BI	Biscuit	1
B0718BL	B0818BL	Black	1
B0718BN	B0818BN	Brushed Nickel	1
B0718RB	B0818RB	Oil Rubbed Bronze	1
B0718WB	B0818WB	Old World Bronze	1
B0718NP	B0818NP	Pearl Nickel	1
B0718PW	B0818PW	Polar White	1
B07136	B07137	Polished Brass	1
B0718PN	B0818PN	Polished Nickel	1
B0718PS	B0818PS	Polished Stainless	1

Standard Two-Hole Schedule 40 Friction Lift Half Kit



PVC#	ABS#	FINISH	CTN QTY
B07152	B07153	Chrome Plated	1
B0715AL	B0815AL	Almond	1
B0715AB	B0815AB	Antique Brass	1
B0715AN	B0815AN	Antique Nickel	1
B0715BI	B0815BI	Biscuit	1
B0715BL	B0815BL	Black	1
B0715BN	B0815BN	Brushed Nickel	1
B0715RB	B0815RB	Oil Rubbed Bronze	1
B0715WB	B0815WB	Old World Bronze	1
B0715NP	B0815NP	Pearl Nickel	1
B0715PW	B0815PW	Polar White	1
B07154	B07155	Polished Brass	1
B0715PN	B0815PN	Polished Nickel	1
B0715PS	B0815PS	Polished Stainless	1

Tubular Lift and Turn Full Kit



PVC#	ABS#	FINISH	CTN QTY
P37500	P39500	Chrome Plated	1
P3750AL	P3950AL	Almond	1
P3750AB	P3950AB	Antique Brass	1
P3750AN	P3950AN	Antique Nickel	1
P3750BI	P3950BI	Biscuit	1
P3750BL	P3950BL	Black	1
P3750BN	P3950BN	Brushed Nickel	1
P3750BS	P3950BS	Brushed Stainless	1
P3750RB	P3950RB	Oil Rubbed Bronze	1
P3750WB	P3950WB	Old World Bronze	1
P3750NP	P3950NP	Pearl Nickel	1
P3750PW	P3950PW	Polar White	1
P3750PN	P3950PN	Polished Nickel	1
P3750PS	P3950PS	Polished Stainless	1
P37502	P39502	Satin Nickel	1

Tubular Friction Lift Full Kit



PVC#	ABS#	FINISH	CTN QTY
P37503	P39503	Chrome Plated	1
P3751AL	P3951AL	Almond	1
P3751AB	P3951AB	Antique Brass	1
P3751AN	P3951AN	Antique Nickel	1
P3751BI	P3951BI	Biscuit	1
P3751BL	P3951BL	Black	1
P3751BN	P3951BN	Brushed Nickel	1
P3751BS	P3951BS	Brushed Stainless	1
P3751RB	P3951RB	Oil Rubbed Bronze	1
P3751WB	P3951WB	Old World Bronze	1
P3751NP	P3951NP	Pearl Nickel	1
P3751PW	P3951PW	Polar White	1
P3751PN	P3951PN	Polished Nickel	1
P3751PS	P3951PS	Polished Stainless	1
P37505	P39505	Satin Nickel	1

Tubular Toe Touch Kit



PVC#	ABS#	FINISH	CTN QTY
P37506	P39506	Chrome Plated	1
P3752AL	P3952AL	Almond	1
P3752AB	P3952AB	Antique Brass	1
P3752AN	P3952AN	Antique Nickel	1
P3752BI	P3952BI	Biscuit	1
P3752BL	P3952BL	Black	1
P3752BN	P3952BN	Brushed Nickel	1
P3752RB	P3952RB	Oil Rubbed Bronze	1
P3752WB	P3952WB	Old World Bronze	1
P3752NP	P3952NP	Pearl Nickel	1
P3752PW	P3952PW	Polar White	1
P3752PN	P3952PN	Polished Nickel	1
P3752PS	P3952PS	Polished Stainless	1
P37508	P39508	Satin Nickel	1

27" Cable Drive Full Kit

1-1/2" Schedule 40 Cable Drive



PVC#	FINISH	CTN QTY
P37550	Chrome Plated	1
P3755BN	Brushed Nickel	1
P3755RB	Oil Rubbed Bronze	1
P3755WB	Old World Bronze	1
P3755NP	Pearl Nickel	1
P3755PB	Polished Brass	1
P3755WH	White	1

Tubular Trip Lever Kit



PVC#	ABS#	FINISH	CTN QTY
P37509	P39509	Chrome Plated	1
P3761AL	P3961AL	Almond	1
P3761AB	P3961AB	Antique Brass	1
P3761AN	P3961AN	Antique Nickel	1
P3761BI	P3961BI	Biscuit	1
P3761BL	P3961BL	Black	1
P3761BN	P3961BN	Brushed Nickel	1
P3761BS	P3961BS	Brushed Stainless	1
P3761RB	P3961RB	Oil Rubbed Bronze	1
P3761WB	P3961WB	Old World Bronze	1
P3761NP	P3961NP	Pearl Nickel	1
P3761PW	P3961PW	Polar White	1
P3761PN	P3961PN	Polished Nickel	1
P3761PS	P3961PS	Polished Stainless	1
P37511	P39511	Satin Nickel	1

A

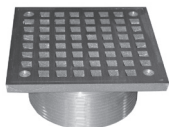
**2" Metal Spud
w/ 4-1/4" Round Strainer**



- All brass spud & strainer
- Works with shower drain base D50001

PART NO.	FINISH	CTN QTY
D60981	Chrome Plated	1
D6098BN	Brushed Nickel	1
D6098RB	Oil Rubbed Bronze	1
D6098WB	Old World Bronze	1
D6098NP	Pearl Nickel	1
D60982	Polished Brass	1
D60980	Stainless Steel	1

**3-1/2" Metal Spud
w/5" Square Strainer**



- All brass spud & strainer
- Works with shower drain base D49804/D49801

PART NO.	FINISH	CTN QTY
D60954	Chrome Plated	1
D6096BN	Brushed Nickel	1
D60962	Nickel Bronze	3
D6096RB	Oil Rubbed Bronze	1
D6096WB	Old World Bronze	1
D6096NP	Pearl Nickel	1
D60960	Polished Brass	2

**2" Brass Spud
w/4" Square Strainer**



- All brass spud & strainer
- Grout ring
- Works with shower drain base D50001

PART NO.	FINISH	CTN QTY
D60942	Chrome Plated	1
D6094BN	Brushed Nickel	1
D6094RB	Oil Rubbed Bronze	1
D6094WB	Old World Bronze	1
D6094NP	Pearl Nickel	1
D6094PB	Polished Brass	1

**2" x 3" Shower Drain w/2" Brass
Spud & 4-1/4" Square Strainer**



- All brass spud and strainer
- Grout ring

PART NO.	FINISH	CTN QTY
D50942	Chrome Plated	1
D5094BN	Brushed Nickel	1
D5094RB	Oil Rubbed Bronze	1
D5094WB	Old World Bronze	1

**2" x 3" Shower Drain w/2" Spud &
Snap-in 4-1/4" Square Strainer**



- No screws
- Four prong installation

PART NO.	FINISH	CTN QTY
D5088BN	Brushed Nickel	1
D5088RB	Oil Rubbed Bronze	1
D5088WB	Old World Bronze	1
D50888	Stainless Steel	1

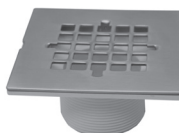
**2" x 3" Shower Drain w/2" Spud &
4-1/4" Strainer**



- Flow rate - 3.102 GPM

PART NO.	FINISH	CTN QTY
D50111	Chrome Plated (cast brass)	1
D5001BN	Brushed Nickel (cast brass)	1
D5001RB	Oil Rubbed Bronze (cast brass)	1
D5001WB	Old World Bronze (cast brass)	1
D5001NP	Pearl Nickel (cast brass)	1

**2" PVC Spud with 4-1/4" Stamped
Square Strainer**



PART NO.	FINISH	CTN QTY
D5087BN	Brushed Nickel	1
D5087RB	Oil Rubbed Bronze	1
D5087WB	Old World Bronze	1
D50887	Stainless Steel	1

2" x 3" Heavy Duty Shower Drain w/3-1/2" Spud & 5" Round Cast Brass Strainer



- PVC spud
- Round strainer
- For multi-head showers
- Flow rate - 15.260 GPM
- Primer tapped

PART NO.	FINISH	CTN QTY
D49059	Chrome Plated	1
D4912BN	Brushed Nickel	1
D49057	Nickel Bronze	1
D4912RB	Oil Rubbed Bronze	1
D4912WB	Old World Bronze	1
D4912NP	Pearl Nickel	1
D49055	Polished Brass	1

3" x 4" Heavy Duty Shower Drain w/3-1/2" Spud & 5" Strainer



- Metal spud
- Round strainer
- For multi-head showers
- Flow rate - 15.260 GPM
- Primer tapped

PART NO.	FINISH	CTN QTY
D49159	Chrome Plated	1
D4991BN	Brushed Nickel	1
D49157	Nickel Bronze	1
D4991RB	Oil Rubbed Bronze	1
D4991WB	Old World Bronze	1
D4991NP	Pearl Nickel	1
D49155	Polished Brass	1

3" x 4" Heavy Duty PVC Shower Drain w/3-1/2" Spud & 5" Square Strainer



- Metal spud
- Square strainer
- For multi-head showers
- Flow rate - 15.260 GPM
- Primer tapped

PART NO.	FINISH	CTN QTY
D4996BN	Brushed Nickel	1
D4996RB	Oil Rubbed Bronze	1
D4996WB	Old World Bronze	1
D4996NP	Pearl Nickel	1

3" x 4" Heavy Duty PVC Shower Drain w/3-1/2" Plastic Spud & 5" Round Cast Brass Strainer

A



- PVC spud
- Round strainer
- For multi-head showers
- Flow rate - 15.260 GPM
- Primer tapped

PART NO.	FINISH	CTN QTY
D4984BN	Brushed Nickel	1
D4984RB	Oil Rubbed Bronze	1
D4984WB	Old World Bronze	1
D4984NP	Pearl Nickel	1

4-1/4" Stamped Strainers



- For D50001 tile shower drain
- Blister packaging
- Center to Center Screwholes- 3.374"

PART NO.	FINISH	CTN QTY
C60806	Chrome Plated	1
C6089AL	Almond	1
C6089AB	Antique Brass	1
C6089AN	Antique Nickel	1
C6089BI	Biscuit	1
C6089BL	Black	1
C6089BN	Brushed Nickel	1
C6089RB	Oil Rubbed Bronze	1
C6089WB	Old World Bronze	1
C6089NP	Pearl Nickel	1
C6089PW	Polar White	1
C60810	Polished Brass-PVD	10
C6089PN	Polished Nickel	1
C6089PS	Polished Stainless	1
C60814	Satin Nickel	1

4-1/4" Snap-in Strainers



- For no caulk fiberglass shower stalls
- Fits D40101, D40140 and D50001
- Blister packaging
- Snap-in prong to Snap-in prong - 3"

PART NO.	FINISH	CTN QTY
D4005BN	Brushed Nickel	1
D4005RB	Oil Rubbed Bronze	1
D4005WB	Old World Bronze	1
D4005NP	Pearl Nickel	1
D40003	Polished Brass-PVD	5
D40010	Satin Nickel	1
D40005	Stainless Steel	1
D40004	White	1

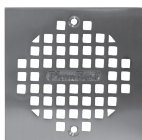
A 4-1/4" Round Cast Brass Heavy Duty Strainers



• Center to center screwholes- 3.375"

PART NO.	FINISH	CTN QTY
C6087BN	Brushed Nickel	1
C6087RB	Oil Rubbed Bronze	1
C6087WB	Old World Bronze	1
C6087NP	Pearl Nickel	1
C60807	Polished Brass-PVD	10

4-1/4" Square Cast Brass Heavy Duty Strainers



• Center to center screwholes- 3.375"

PART NO.	FINISH	CTN QTY
C6083BN	Brushed Nickel	1
C6083RB	Oil Rubbed Bronze	1
C6083WB	Old World Bronze	1
C6083NP	Pearl Nickel	1
C60813	Polished Brass-PVD	10

5.196" Round Cast Brass Heavy Duty Strainers



• Center to center screwholes- 4.375"

PART NO.	FINISH	CTN QTY
C60803	Chrome Plated	1
C6084BN	Brushed Nickel	1
C6084RB	Oil Rubbed Bronze	1
C6084WB	Old World Bronze	1
C6084NP	Pearl Nickel	1
C60804	Polished Brass	1

"Code Blue" Replacement Strainers



• Regular Strainers
• Fits non-adjustable "Code Blue" drains

PART NO.	DESCRIPTION	CTN/MSTR
D64000	2" SS	1
D64401	SS Crown	1
D64001	2" PB/PVD	1/100
D6400BN	Brushed Nickel	1/250
D6400RB	Oil Rubbed Bronze	1/250
D6400WB	Old World Bronze	1/250

4" Shower Drain Strainers



• Center to center screwholes- 3.362"

PART NO.	DESCRIPTION	STRAINER	CTN QTY
D54010	4" PB Stamped to fit inside plastic ring	PVD	10

4-1/4" Strainer w/Screws for Fiberglass Shower Stalls



• Fits D41001 and D41600
• Tapping screws included
• Blister card packaging
• Center to center screwholes- 2-11/16"

PART NO.	FINISH	CTN QTY
D4110BN	Brushed Nickel	1
D4110RB	Oil Rubbed Bronze	1
D4110WB	Old World Bronze	1
D4110NP	Pearl Nickel	1
D41102	Polished Brass-PVD	1
D41107	Satin Nickel	1
D41101	Stainless Steel	1

3-1/2" PVC Spud w/5" Round Strainer



PART NO.	FINISH	CTN QTY
D56216	Chrome Plated	1
D6084BN	Brushed Nickel	1
D56214	Nickel Bronze	1
D6084RB	Oil Rubbed Bronze	1
D6084WB	Old World Bronze	1
D6084NP	Pearl Nickel	1
D56212	Polished Brass	1
D56211	Stainless Steel	1

3-1/2" Metal Spud w/5" Round Strainer

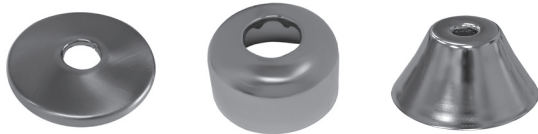


• All brass

PART NO.	FINISH	CTN QTY
D60990	Chrome Plated	1
D6091BN	Brushed Nickel	1
D60996	Nickel Bronze	1
D6091RB	Oil Rubbed Bronze	1
D6091WB	Old World Bronze	1
D6091NP	Pearl Nickel	1
D60991	Polished Brass	1

A

Escutcheons



1/2" CTS - 5/8" OD Low Pattern - 2-1/2" OD

PART NO.	FINISH	CTN QTY
E0105BN	Brushed Nickel	1
E0105RB	Oil Rubbed Bronze	1
E0105WB	Old World Bronze	1

1/2" IPS LOW PATTERN- 2- 1/2" OD

PART NO.	FINISH	CTN QTY
E0205BN	Brushed Nickel	1
E0205RB	Oil Rubbed Bronze	1
E0205WB	Old World Bronze	1

1-1/4" TUBULAR BOX PATTERN - 3" OD

PART NO.	FINISH	CTN QTY
E0412BN	Brushed Nickel	1
E0412RB	Oil Rubbed Bronze	1
E0412WB	Old World Bronze	1

1-1/2" TUBULAR BOX PATTERN- 3" OD

PART NO.	FINISH	CTN QTY
E0415BN	Brushed Nickel	1
E0415RB	Oil Rubbed Bronze	1
E0415WB	Old World Bronze	1

1/2" CTS - 5/8" OD BELL PATTERN 2- 3/8" OD

PART NO.	FINISH	CTN QTY
E0705BN	Brushed Nickel	1
E0705RB	Oil Rubbed Bronze	1
E0705WB	Old World Bronze	1
E0705PB	Polished Brass	1

1/2" IPS BELL PATTERN 2-3/8" OD

PART NO.	FINISH	CTN QTY
E0605BN	Brushed Nickel	1
E0605RB	Oil Rubbed Bronze	1
E0605WB	Old World Bronze	1
E0605PB	Polished Brass	1

1-1/4" TUBULAR BELL PATTERN- 3" OD

PART NO.	FINISH	CTN QTY
E0812BN	Brushed Nickel	1
E0812RB	Oil Rubbed Bronze	1
E0812WB	Old World Bronze	1
E0812PB	Polished Brass	1

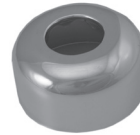
1-1/2" TUBULAR BELL PATTERN- 3" OD

PART NO.	FINISH	CTN QTY
E0815BN	Brushed Nickel	1
E0815RB	Oil Rubbed Bronze	1
E0815WB	Old World Bronze	1
E0815PB	Polished Brass	1

Polished Brass Escutcheons



PART NO.	DESCRIPTION	CTN QTY
E80050	1/2" CTS (5/8" OD)	25
E81375	3/8" IPS	25
E81050	1/2" IPS	25



Box Pattern

PART NO.	DESCRIPTION	CTN QTY
E82125	1-1/4" OD tubular	12
E82150	1-1/2" OD tubular	12

Polished Brass Finish Flexible Floor And Ceiling Plates



• Plastic

PART NO.	DESCRIPTION	CTN QTY
F08375	3/8" IPS or 1/2" CTS	12
F08050	1/2" IPS or 3/4" CTS	12
F08124	1-1/4" CTS	12
F08150	1-1/2" IPS	12

Non-Slotted Full Flow Aerator



• Dual threads (15/16 -27 male x 55/64 -27 female)

PART NO.	FINISH	CTN QTY
A01019	Polished Brass	1

A

Brass Nipples



• Lead Free

3/8" x 4"

PART NO.	FINISH	CTN QTY
N2206BN	Brushed Nickel (PVD)	1
N2206RB	Oil Rubbed Bronze	1
N2206WB	Old World Bronze	1
N17375	Polished Brass	12

3/8" x 6"

PART NO.	FINISH	CTN QTY
N2210BN	Brushed Nickel (PVD)	1
N2210RB	Oil Rubbed Bronze	1
N2210WB	Old World Bronze	1
N2210PB	Polished Brass	1

1/2" x 4"

PART NO.	FINISH	CTN QTY
N2306BN	Brushed Nickel (PVD)	12
N2306RB	Oil Rubbed Bronze	1
N2306WB	Old World Bronze	1
N17050	Polished Brass	1

1/2" x 6"

PART NO.	FINISH	CTN QTY
N2310BN	Brushed Nickel (PVD)	1
N2310RB	Oil Rubbed Bronze	1
N2310WB	Old World Bronze	1
N2310PB	Polished Brass	1

1/2" x 3-1/2" Sleeves



PART NO.	FINISH	CTN QTY
T73300	Chrome	1
T7330BN	Brushed Nickel (PVD)	1
T7330RB	Oil Rubbed Bronze	1
T7330WB	Old World Bronze	1
T7330PB	Polished Brass (PVD)	1

Quarter Turn Angle Stop with 5" Sweat Extension And Escutcheon



PART NO.	FINISH	CTN QTY
S42220	Chrome Plated	1
S4222BN	Brushed Nickel	1
S4222RB	Oil Rubbed Bronze	1
S4222WB	Old World Bronze	1
S4222PB	Polished Brass	1

Quarter Turn Angle Stop



• Cross handle
• Includes hot, cold and blank buttons

1/2" FIP x 3/8" OD

PART NO.	FINISH	CTN QTY
S43021	Chrome Plated	1
S4302BN	Brushed Nickel	1
S4302RB	Oil Rubbed Bronze	1
S4302WB	Old World Bronze	1
S4302PB	Polished Brass (PVD)	1

5/8" FIP x 3/8" OD

PART NO.	FINISH	CTN QTY
S42031	Chrome Plated	1
S4203BN	Brushed Nickel	1
S4203RB	Oil Rubbed Bronze	1
S4203WB	Old World Bronze	1
S4203PB	Polished Brass	1

Quarter Turn Straight Stop



• Includes hot, cold and blank buttons

1/2" FIP x 3/8" OD

PART NO.	FINISH	CTN QTY
S43021	Chrome Plated	1
S4302BN	Brushed Nickel	1
S4302RB	Oil Rubbed Bronze	1
S4302WB	Old World Bronze	1
S4302PB	Polished Brass (PVD)	1

5/8" FIP x 3/8" OD

PART NO.	FINISH	CTN QTY
S43031	Chrome Plated	1
S4303BN	Brushed Nickel	1
S4303RB	Oil Rubbed Bronze	1
S4303WB	Old World Bronze	1
S4303PB	Polished Brass (PVD)	1

Compression Angle Stop

5/8" COMP. x 3/8" COMP.



PART NO.	FINISH	CTN QTY
S10210	Chrome Plated	1
S4211BN	Brushed Nickel	20
S4211RB	Oil Rubbed Bronze	20
S4211WB	Old World Bronze	20
S4211PN	Polished Nickel	20

Compression Angle Stop

1/2" FIP x 3/8" COMP.



PART NO.	FINISH	CTN QTY
S10203	Chrome Plated	1
S4213BN	Brushed Nickel	20
S4213RB	Oil Rubbed Bronze	20
S4213WB	Old World Bronze	20
S4213PN	Polished Nickel	20

Compression Straight Stop

5/8" COMP. x 3/8" COMP.



PART NO.	FINISH	CTN QTY
S10214	Chrome Plated	1
S4312BN	Brushed Nickel	20
S4312RB	Oil Rubbed Bronze	20
S4312WB	Old World Bronze	20
S4312PN	Polished Nickel	20

Compression Straight Stop

1/2" FIP x 3/8" COMP.



PART NO.	FINISH	CTN QTY
S10206	Chrome Plated	1
S4314BN	Brushed Nickel	20
S4314RB	Oil Rubbed Bronze	20
S4314WB	Old World Bronze	20
S4314PN	Polished Nickel	20

Closet Supply And Stop Kit



- Supply
- Stop
- 1/2" CTS Escutcheon

3/8" x 20" Closet Supply and 3/8" x 5/8" Angle Stop Kit

PART NO.	FINISH	CTN QTY
S1037CP	Chrome	1
S1037AP	Antique Pewter	1
S1037BB	Brushed Bronze	1
S1037BN	Brushed Nickel	1
S1037RB	Oil Rubbed Bronze	1
S1037WB	Old World Bronze	1
S10371	Polished Brass	1
S1037PS	Polished Stainless	1

3/8" x 20" Closet Supply and 3/8" x 5/8" Straight Stop Kit

PART NO.	FINISH	CTN QTY
S1038CP	Chrome Plated	1
S1038AP	Antique Pewter	1
S1038BB	Brushed Bronze	1
S1038BN	Brushed Nickel	1
S1038RB	Oil Rubbed Bronze	1
S1038WB	Old World Bronze	1
S10381	Polished Brass	1
S1038PS	Polished Stainless	1

3/8" x 20" Closet Supply and 1/2" x 3/8" Angle Stop Kit

PART NO.	FINISH	CTN QTY
S1039CP	Chrome Plated	1
S1039BN	Brushed Nickel	1
S1039RB	Oil Rubbed Bronze	1

3/8" x 20" Closet Supply and 5/8" x 3/8" Angle Stop Kit

PART NO.	FINISH	CTN QTY
S1137BN	Brushed Nickel	1
S1137RB	Oil Rubbed Bronze	1

3/8" x 20" Closet Supply and 5/8" x 3/8" Straight Stop Kit

PART NO.	FINISH	CTN QTY
S1138BN	Brushed Nickel	1
S1138RB	Oil Rubbed Bronze	1

Polished Brass Water Supply Tubes



- Bullnose rigid supply tube

PART NO.	DESCRIPTION	CTN QTY
S44002	3/8" x 20" Basin Tube	12
S44003	3/8" x 12" Tank Tube	12
S44005	3/8" x 20" Tank Tube	12

A

Lavatory Supply And Stop Kit



- Supply (2 pieces)
- Stop (2 pieces)
- 1/2" CTS Escutcheon (2 pieces)

3/8" x 20" Lavatory Supply and 3/8" x 5/8" Angle Stop Kit

PART NO.	FINISH	CTN QTY
S1036CP	Chrome Plated	1
S1036AP	Antique Pewter	1
S1036BB	Brushed Bronze	1
S1036BN	Brushed Nickel	1
S1036RB	Oil Rubbed Bronze	1
S1036WB	Old World Bronze	1
S10361	Polished Brass	1
S1036PS	Polished Stainless	1

3/8" x 20" Lavatory Supply and 3/8" x 5/8" Straight Stop Kit

PART NO.	FINISH	CTN QTY
S1035CP	Chrome Plated	1
S1035AP	Antique Pewter	1
S1035BB	Brushed Bronze	1
S1035BN	Brushed Nickel	1
S1035RB	Oil Rubbed Bronze	1
S1035WB	Old World Bronze	1
S10351	Polished Brass	1
S1035PS	Polished Stainless	1

3/8" x 20" Lavatory Supply and 1/2" x 3/8" Angle Stop Kit

PART NO.	FINISH	CTN QTY
S1034CP	Chrome Plated	1
S1034BN	Brushed Nickel	1
S1034RB	Oil Rubbed Bronze	1

3/8" x 20" Lavatory Supply and 5/8" x 3/8" Angle Stop Kit

PART NO.	FINISH	CTN QTY
S1136BN	Brushed Nickel	1
S1136RB	Oil Rubbed Bronze	1

3/8" x 20" Lavatory Supply and 5/8" x 3/8" Straight Stop Kit

PART NO.	FINISH	CTN QTY
S1135BN	Brushed Nickel	1
S1135RB	Oil Rubbed Bronze	1

Lav Supply Tubes



- Basin supply
- Bullnose rigid supply tube

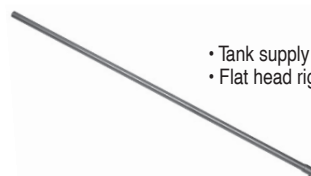
3/8" x 12"

PART NO.	FINISH	CTN QTY
S04020	Chrome Plated	100
S4401BN	Brushed Nickel	1
S4401RB	Oil Rubbed Bronze	1
S4401WB	Old World Bronze	1

3/8" x 20"

PART NO.	FINISH	CTN QTY
S04022	Chrome Plated	100
S4402BN	Brushed Nickel	1
S4402RB	Oil Rubbed Bronze	1
S4402WB	Old World Bronze	1

Closest Supply Tubes



- Tank supply
- Flat head rigid supply tube

3/8" x 12"

PART NO.	FINISH	CTN QTY
S04027	Chrome Plated	100
S4403BN	Brushed Nickel	1
S4403RB	Oil Rubbed Bronze	1
S4403WB	Old World Bronze	1

3/8 x 20"

PART NO.	FINISH	CTN QTY
S04029	Chrome Plated	100
S4405BN	Brushed Nickel	1
S4405RB	Oil Rubbed Bronze	1
S4405WB	Old World Bronze	1

Ultrafit Tank Lever - Replaces 96% of All Tank Levers



- PATENTED
- New shapable arm bends to fit the needed arm angle
- Arm can be cut to fit 4", 6" or 8" lengths for customized fit
- Heavy duty plastic handle comes in a variety of finishes
- Sturdy plastic arm, spud and nut
- Blister card packaging

PART NO.	FINISH	CTN QTY
T01100	Chrome Plated	25
T01101	Polished Brass	25
T01102	White	1
T01103	Bone	1
T04001	Display for UltraFit Tank levers 12 each of above	1

Decorative Tank Trip Levers



• 8" arm

PART NO.	DESCRIPTION	FINISH	CTN QTY
T01003	Brass arm with metal spud and nut	PB Metal	25
T01004	Brass plated arm with metal spud and nut	AB Metal	25
T01007	Brass arm with metal spud and nut	Satin Nickel	1

Decorative Tank Trip Levers



• 8" arm

PART NO.	DESCRIPTION	FINISH	CTN QTY
T01061	Brass plated arm with plastic spud & nut / universal fit	PB Metal	25

Decorative Tank Trip Levers



• 8" arm

PART NO.	DESCRIPTION	FINISH	CTN QTY
T01006	Brass arm with metal spud and nut / universal fit	PB Metal	25
T01008	Brass arm with die cast nut	Satin Nickel	1

Decorative Tank Trip Levers



• 8" arm

PART NO.	DESCRIPTION	FINISH	CTN QTY
T01071	Side mount push button brass arm with plastic spud and nut	PB ABS	6
T01075	Front mount push button brass arm with plastic spud and nut	PV ABS	6

Decorative Tank Trip Levers for American Standard



• 9-1/2" arm

PART NO.	DESCRIPTION	FINISH	CTN QTY
T01065	Brass arm with metal spud and nut. Offset for thick walls	PB Metal	25

Decorative Tank Trip Levers for American Standard



• 8" arm

PART NO.	DESCRIPTION	FINISH	CTN QTY
T01049	Neo 28° combo with plastic arm, spud and nut	PB ABS	1

Decorative Tank Trip Levers for American Standard



• 6" arm

PART NO.	DESCRIPTION	FINISH	CTN QTY
T01043	45° arm for Cadet 2* plastic arm, spud and nut	PB ABS	25
T01044	45° arm with Cadet 2* plastic arm, spud and nut	White ABS	25
T01045	45° arm with Cadet 2* plastic arm, spud and nut	Bone ABS	25

Decorative Tank Trip Levers for American Standard



• 4" arm

PART NO.	DESCRIPTION	FINISH	CTN QTY
T01031	Plastic arm, spud and nut for beaded chain	PB ABS	25
T01032	Plastic arm, spud and nut for beaded chain	White ABS	25
T01033	Plastic arm, spud and nut for beaded chain	Bone ABS	25

A **Decorative Tank Trip Levers for American Standard**



PART NO.	DESCRIPTION	FINISH	CTN QTY
T01051	Plastic arm, spud and nut for Plebe* and Cadet*	PB ABS	25
T01052	Plastic arm, spud and nut for Plabe* and Cadet*	White ABS	25
T01053	Plastic arm, spud and nut for Pleve* and Cadet*	Bone ABS	25

Decorative Tank Trip Levers for Crane



PART NO.	DESCRIPTION	FINISH	CTN QTY
T01035	Plastic arm, spud and nut	PB ABS	25
T01036	Plastic arm, spud and nut	White ABS	25
T01037	Plastic arm, spud and nut	Bone ABS	25

Decorative Tank Trip Levers for Eljer



PART NO.	DESCRIPTION	FINISH	CTN QTY
T01021	Side mount / Brass arm with non-crack nylon spud and nut	PB Metal	25

Decorative Tank Trip Levers for Kohler



PART NO.	DESCRIPTION	FINISH	CTN QTY
T01017	Wellworth/Barrington Lite new style / side mount 1.6 gal. unit replacement	PB Metal	6
T01015	Cast brass arm with metal spud and nut	PB Metal	6

Decorative Tank Trip Levers for Mansfield



PART NO.	DESCRIPTION	FINISH	CTN QTY
T01073	#41* plastic arm, spud and nut	PB ABS	25

Decorative Tank Trip Levers for Universal Rundle/Sears



PART NO.	DESCRIPTION	FINISH	CTN QTY
T01067	Brass arm with plastic spud and nut fits Universal Rundle/Sears*	PB Metal	25

Universal Decorative Closet Flush Lever



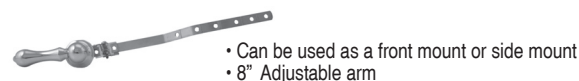
PART NO.	FINISH	CTN QTY
T01000	Chrome Plated	1
T0100BN	Brushed Nickel	1
T0100RB	Oil Rubbed Bronze	1
T0100WB	Old World Bronze	1
T0100NP	Pearl Nickel	1
T0100PB	Polished Brass	1

Eljer Side Mount Tank Lever



PART NO.	FINISH	CTN QTY
T0102BN	Brushed Nickel	1
T0102RB	Oil Rubbed Bronze	1
T0102WB	Old World Bronze	1
T0102NP	Pearl Nickel	1

Universal Front or Side Mount Tank Lever



PART NO.	FINISH	CTN QTY
T01330	Chrome	1
T0133BN	Brushed Nickel	1
T0133RB	Oil Rubbed Bronze	1
T0133WB	Old World Bronze	1
T0133NP	Pearl Nickel	1

Kohler Side Mount Tank Lever



PART NO.	FINISH	CTN QTY
T0108BN	Brushed Nickel	1
T0108NP	Pearl Nickel	1
T0108RB	Oil Rubbed Bronze	1
T0108WB	Old World Bronze	1
T01181	Polished Brass	1