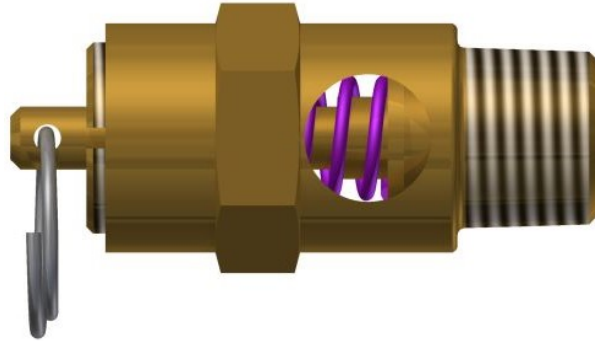




**Pressure Relief Valve
Model: SRV250**



Set Pressure Range: 25-450 psig

Set Pressure Tolerance: ± 2 psig up to and including 70 psig, $\pm 3\%$ of set pressure greater than 70 psig. As required in paragraph UG-134(d)(1) of the ASME Boiler & Pressure Vessel Code Sec. VIII Div. 1.

**Seat Leakage: Bubble Tight within 5 psig for set pressure 50 psig or less
Bubble Tight within 10% for set pressure greater than 50 psig
As required in paragraph 2.2.3 of API 527.**

Flow Factor (Slope Method): 0.74

Operating Temperature Range: -65° to 400°F

Materials of Construction:

Seat, Cap, Piston: ASTM B16 Brass or ASTM A582 Stainless

Spring: 17-7 Stainless Steel

Seal: Silicone, Viton or EPDM

Valve Weight: 0.10 lbm

Valve Options:

Valve Material: ASTM B16 Brass or ASTM A582 Stainless

Compliance with European PED 2014/68/EU, "CE" Stamp

Compliance with UK PESR SI 2016 no. 1105 as amended, "UK," Stamp

Seal: Silicone (25-350 psig @ -65° to 400°F) or Viton (25-450 psig @ -15° to 400°F)

High Pressure Setting 351-450 psi (Valve Weight 0.11 lbm)

Plating: Nickel Plating

Inlet NPT Sizes: 1/8 NPT or BSPT

1/4 NPT, BSPT, or BSPP

3/8 NPT, BSPT, or BSPP

Certifications:

ASME Boiler & Pressure Vessel Code Section VIII Division 1

CSA B51-03 Boiler, Pressure, Vessel, and Pressure Piping Code



CONRADER

Ordering Information

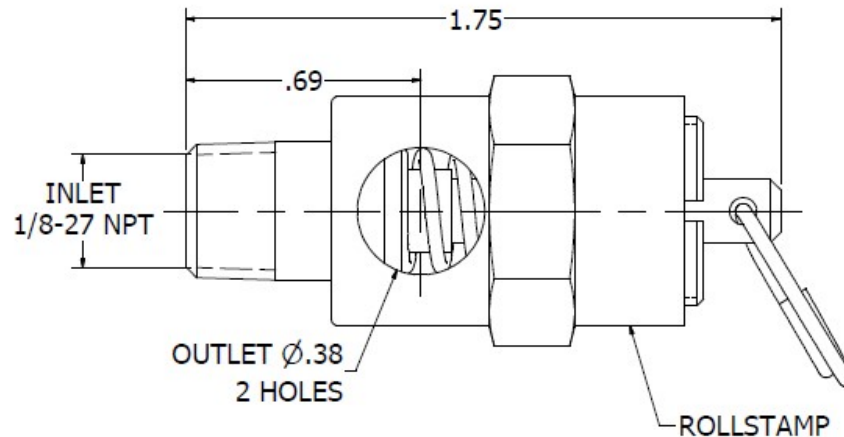
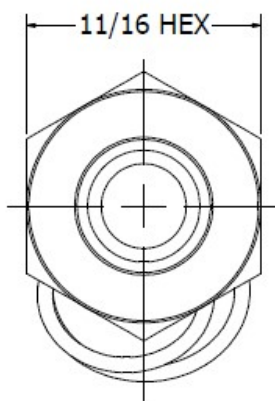
SRV250		-	1/4		-	BSPT		-	SS		-	V		-	CE		-	SC		-	SST		-	150	
Connection Size		Connection Type		Construction Material		Seal Material		Optional Code		Serialized		Thread Sealant		Pressure Setting											
Option	Code	Option	Code	Option	Code	Option	Code	Option	Code	Option	Code	Option	Code	Option	Code										
1/8"	1/8	NPT	(Blank)	Brass	(Blank)	Silicone	(Blank)	None	(Blank)	None	(Blank)	None	(Blank)	None	(Blank)										
1/4"	1/4	BSPT	BSPT	Nickel Plated	NP	Viton®	V	CE Mark	CE	Serialized	SC	White	SST												
3/8"	3/8"			Stainless Steel	SS			Non-Code	NC																

Options

1. Connection Size: The available sizes are 1/8", 1/4", or 3/8".
2. Connection Type
 - a. NPT – Pipe Threads made to the ASME B1.20.1 Standard
 - b. BSPT – Pipe Threads made to the ISO 7-1 Standard
 - c. BSPP – Pipe Threads made to the ISO 7-1 Standard
3. Construction Material
 - a. Brass
 - b. Nickel Plated – Electroless Nickel Plated Brass
 - c. Stainless Steel
4. Seal Material
 - a. Silicone
 - b. Viton®
 - c. EPDM
5. Optional Code
 - a. None: Will meet the requirements of ASME BPV Code Section VIII Division 1.
 - b. CE/UKCA Mark: Valve has the “CE/UKCA” certification for the European PED and UK PESR.
 - c. Non-Code: For valves with a pressure setting below 25 psi.
6. Serialized Valves: Have a unique serial number and include certificate.
7. Thread Sealant
 - a. White colored thread sealant

Examples:


1. A 1/4" NPT brass valve with a silicone seal set 200 psi is **SRV250-1/4-200**.
2. A 1/8" BSPT brass valve with a Viton seal and white thread sealant set at 100 psi is **SRV250-1/8-BSPT-V-SST-100**.



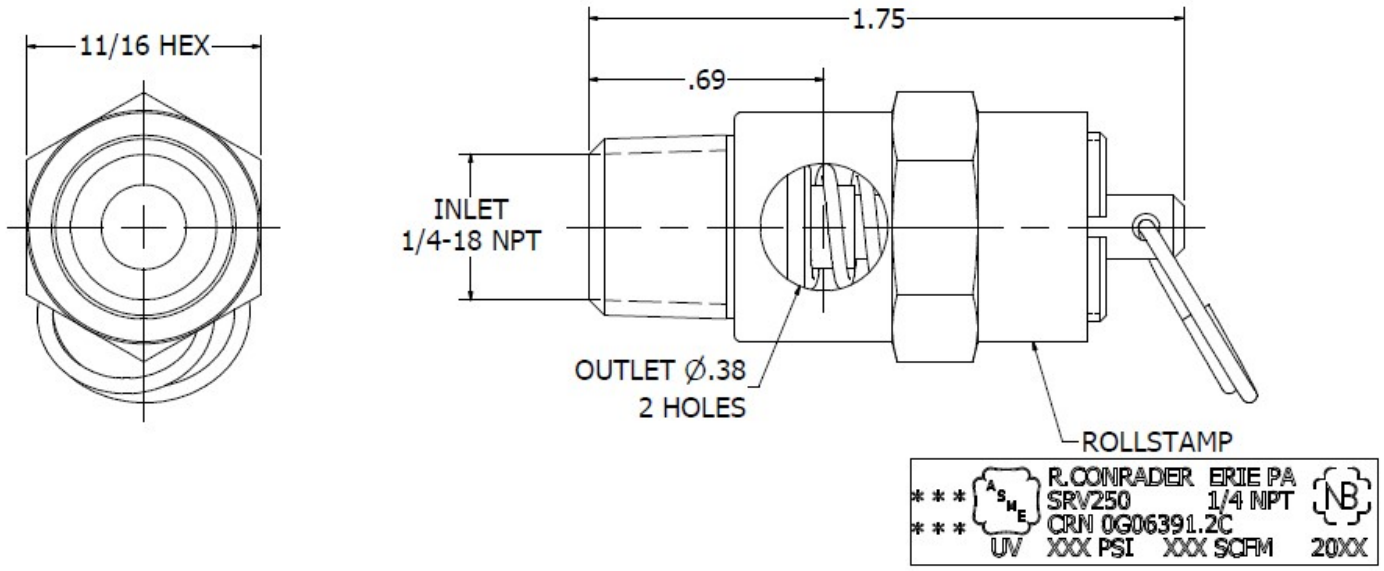
***  R. CONRADER ERIE PA 
 *** SRV250 1/8 NPT
 *** CRNI 0G06391.2C
 UV XXX PSI XXX SCFM 20XX

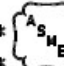

NOTES:

- * OPERATING TEMPERATURE RANGE: -65°F TO 400°F
- * SET PRESSURE RANGE: 25-350 psig
- * SET PRESSURE TOLERANCE: ±2 psig UP TO AND INCLUDING 70 psig, ±3% OF SET PRESSURE GREATER THAN 70 psig.
- * SEAT TIGHTNESS: BUBBLE TIGHT WITHIN 5 psig FOR SET PRESSURE 50 psig OR LESS. BUBBLE TIGHT WITHIN 10% FOR SET PRESSURE GREATER THAN 50 psig.
- * VALVE WEIGHT: 0.09 lbmass

 R. CONRADER COMPANY 749 EAST 18TH STREET P.O. BOX 924 ERIE, PA 16512-0924 (814) 898-2727	DESCRIPTION DIM. OUTLINE	ISSUED BY STAUFFER	ISSUED 1/27/2005	GROUP SV
	VALVE MODEL SRV250-1/8	REVISOR NRP	REVISOR 1/20/2016	PAGE 2 OF 4
MATERIAL	SCALE 2:1	DRAWING NO. 5008	REVISION F	


THIS DOCUMENT CONTAINS INFORMATION CONFIDENTIAL TO CONRADER. LOANED SUBJECT TO THE CONDITIONS THAT IT NOT BE USED OR CAUSED TO BE USED IN ANY WAY HARMFUL TO CONRADER AND BE RETURNED ON DEMAND.

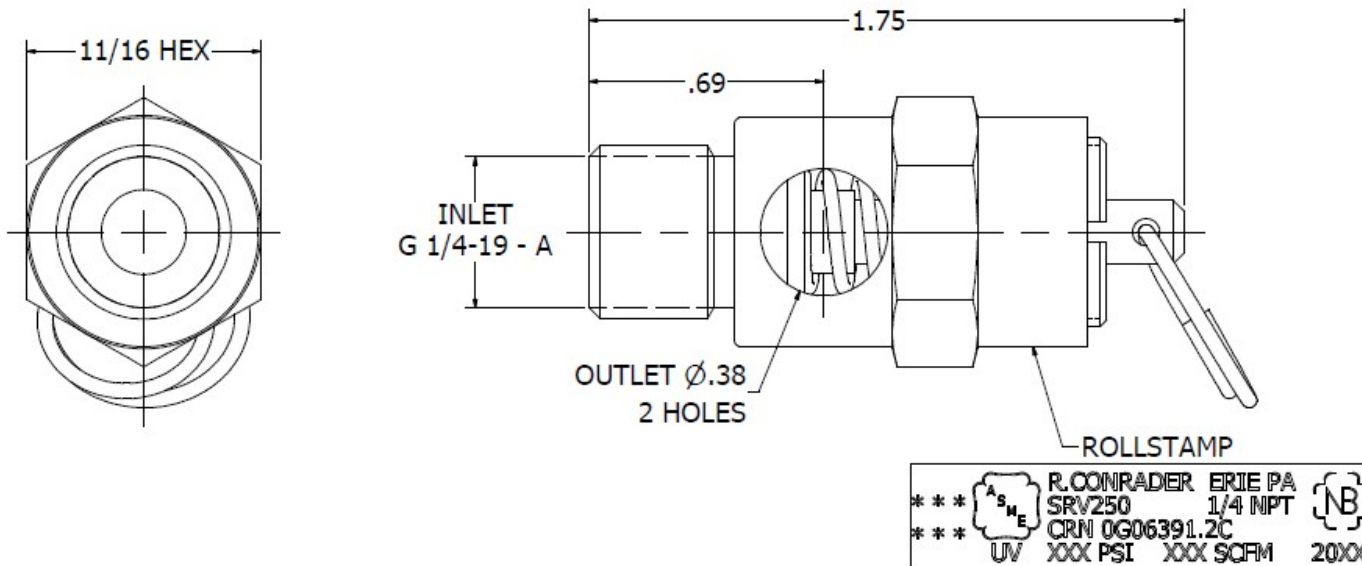


***  R. CONRADER ERIE PA
 ***  SRV250 1/4 NPT
 CRN 0G06391.2C
 UV XXX PSI XXX SCFM 20XX

NOTES:

- * OPERATING TEMPERATURE RANGE: -65°F TO 400°F
- * SET PRESSURE RANGE: 25-350 psig
- * SET PRESSURE TOLERANCE: ±2 psig UP TO AND INCLUDING 70 psig, ±3% OF SET PRESSURE GREATER THAN 70 psig.
- * SEAT TIGHTNESS: BUBBLE TIGHT WITHIN 5 psig FOR SET PRESSURE 50 psig OR LESS. BUBBLE TIGHT WITHIN 10% FOR SET PRESSURE GREATER THAN 50 psig.
- * VALVE WEIGHT: 0.10 lbmass

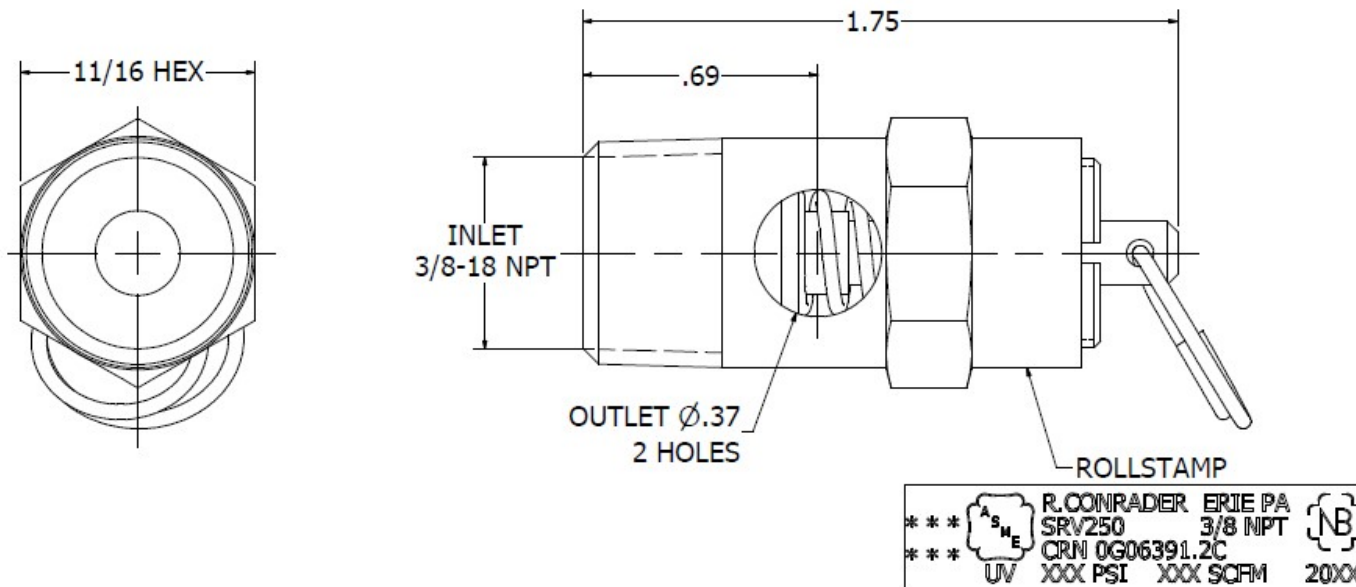
 R. CONRADER COMPANY 749 EAST 18TH STREET P.O. BOX 924 ERIE, PA 16512-0924 (814) 898-2727	DESCRIPTION DIM. OUTLINE	ISSUED BY L.CONTI	ISSUED 8/22/1994	GROUP SV
	VALVE MODEL SRV250-1/4	REVISOR NRP	REVISOR 1/20/2016	PAGE 2 OF 4
THIS DOCUMENT CONTAINS INFORMATION CONFIDENTIAL TO CONRADER. LOANED SUBJECT TO THE CONDITIONS THAT IT NOT BE USED OR CAUSED TO BE USED IN ANY WAY HARMFUL TO CONRADER AND BE RETURNED ON DEMAND.	MATERIAL	SCALE 2:1	DRAWING NO. 1299	REVISION I



NOTES:

- * OPERATING TEMPERATURE RANGE: -15°F TO 400°F
- * SET PRESSURE RANGE: 25-350 psig
- * SET PRESSURE TOLERANCE: ±2 psig UP TO AND INCLUDING 70 psig, ±3% OF SET PRESSURE GREATER THAN 70 psig.
- * SEAT TIGHTNESS: BUBBLE TIGHT WITHIN 5 psig FOR SET PRESSURE 50 psig OR LESS. BUBBLE TIGHT WITHIN 10% FOR SET PRESSURE GREATER THAN 50 psig.
- * VALVE WEIGHT: 0.10 lbmass

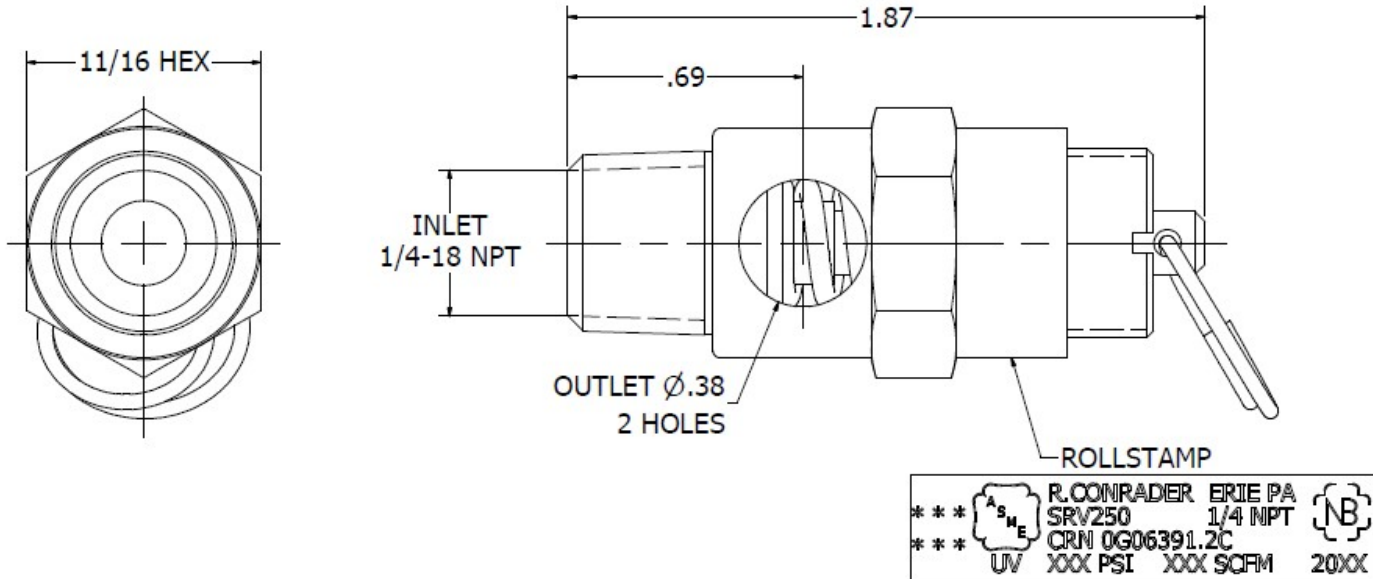
	R. CONRADER COMPANY 749 EAST 18TH STREET P.O. BOX 924 ERIE, PA 16512-0924 (814) 898-2727	DESCRIPTION DIM. OUTLINE VALVE MODEL SRV250-1/4-BSPPA-V MATERIAL	ISSUED BY NRP REVISOR NRP SCALE 2:1	ISSUED 1/10/2013 REVISOR 1/20/2016 DRAWING NO. 6940	GROUP SV PAGE 2 OF 6 REVISION B
	<small>THIS DOCUMENT CONTAINS INFORMATION CONFIDENTIAL TO CONRADER. LOANED SUBJECT TO THE CONDITIONS THAT IT NOT BE USED OR CAUSED TO BE USED IN ANY WAY HARMFUL TO CONRADER AND BE RETURNED ON DEMAND.</small>				



NOTES:

- * OPERATING TEMPERATURE RANGE: -65°F TO 400°F
- * SET PRESSURE RANGE: 25-350 psig
- * SET PRESSURE TOLERANCE: ±2 psig UP TO AND INCLUDING 70 psig, ±3% OF SET PRESSURE GREATER THAN 70 psig.
- * SEAT TIGHTNESS: BUBBLE TIGHT WITHIN 5 psig FOR SET PRESSURE 50 psig OR LESS. BUBBLE TIGHT WITHIN 10% FOR SET PRESSURE GREATER THAN 50 psig.
- * VALVE WEIGHT: 0.12 lbmass

	R. CONRADER COMPANY 749 EAST 18TH STREET P.O. BOX 924 ERIE, PA 16512-0924 (814) 898-2727	DESCRIPTION DIM. OUTLINE VALVE MODEL SRV250-3/8 MATERIAL	ISSUED BY STAUFFER REVISED BY NRP SCALE 2:1	ISSUED 4/17/2008 REVISED 1/20/2016 DRAWING NO. 5633	GROUP SV PAGE 2 OF 4 REVISION F
	<small>THIS DOCUMENT CONTAINS INFORMATION CONFIDENTIAL TO CONRADER. LOANED SUBJECT TO THE CONDITIONS THAT IT NOT BE USED OR CAUSED TO BE USED IN ANY WAY HARMFUL TO CONRADER AND BE RETURNED ON DEMAND.</small>				



ROLLSTAMP
 *** ASME ***
 R. CONRADER ERIE PA
 SRV250 1/4 NPT
 CRNI 0G06391.2C
 UV XXX PSI XXX SCFM 20XX

NOTES:

- * OPERATING TEMPERATURE RANGE: -15°F TO 400°F
- * SET PRESSURE RANGE: 351-450 psig
- * SET PRESSURE TOLERANCE: ±3% OF SET PRESSURE.
- * SEAT TIGHTNESS: BUBBLE TIGHT WITHIN 10% OF SET PRESSURE.
- * VALVE WEIGHT: 0.12 lbmass

	R. CONRADER COMPANY 749 EAST 18TH STREET P.O. BOX 924 ERIE, PA 16512-0924 (814) 898-2727	DESCRIPTION DIM. OUTLINE VALVE MODEL SRV250-1/4-V (351-450 psig)	ISSUED BY NRP	ISSUED 5/30/2008	GROUP SV
	THIS DOCUMENT CONTAINS INFORMATION CONFIDENTIAL TO CONRADER. LOANED SUBJECT TO THE CONDITIONS THAT IT NOT BE USED OR CAUSED TO BE USED IN ANY WAY HARMFUL TO CONRADER AND BE RETURNED ON DEMAND.	MATERIAL	REVISIED BY NRP	REVISIED 1/20/2016	PAGE 4 OF 6



SRV250 FLOW CAPACITY

<u>SETTING (PSI)</u>	<u>SCFM</u>
25	31
30	35
35	39
40	43
45	47
50	51
55	55
60	59
65	63
70	67
75	71
80	75
85	80
90	84
95	88
100	92
105	96
110	100
115	104
120	108
125	112
130	116
135	120
140	124
145	128
150	132
155	137
160	141
165	145

<u>SETTING (PSI)</u>	<u>SCFM</u>
170	149
175	153
180	157
185	161
190	165
195	169
200	173
205	177
210	181
215	185
220	189
225	194
230	198
235	202
240	206
245	210
250	214
255	218
260	222
265	226
270	230
275	234
280	238
285	242
290	246
295	251
300	255
305	259
310	263

<u>SETTING (PSI)</u>	<u>SCFM</u>
315	267
320	271
325	275
330	279
335	283
340	287
345	291
350	295
355	299
360	303
365	307
370	312
375	316
380	320
385	324
390	328
395	332
400	336
405	340
410	344
415	348
420	352
425	356
430	360
435	364
440	369
445	373
450	377

**THE NATIONAL BOARD
OF
BOILER & PRESSURE VESSEL INSPECTORS**

Certificate of Authorization



This is to certify that

**R. Conrader Company
3200 West 22nd Street
Erie, Pennsylvania 16506
United States**

Acceptable Abbreviation: R.CONRADER

is authorized to use the "NB" mark in accordance with the provisions of NB-501, National Board Certification of Pressure Relief Devices.

The scope of Authorization is limited to National Board Certified devices which have been manufactured, assembled and marked in accordance with the following construction codes:

ASME Section VIII, Division 1: "UV"



Issue Date:

March 19, 2021

Expiration Date:

March 15, 2024

Executive Director

A handwritten signature in black ink, appearing to read 'John E. Conrader'.



CERTIFICATE OF AUTHORIZATION

The named company is authorized by The American Society of Mechanical Engineers (ASME) for the scope of activity shown below in accordance with the applicable rules of the ASME Boiler and Pressure Vessel Code. The use of the ASME Single Certification Mark and the authority granted by this Certificate of Authorization are subject to the provisions of the agreement set forth in the application. Any construction stamped with the ASME Single Certification Mark shall have been built strictly in accordance with the provisions of the ASME Boiler and Pressure Vessel Code.

COMPANY:

R. Conrader Company
3200 West 22nd Street
Erie Pennsylvania 16506
United States

SCOPE:

**Manufacture of pressure vessel pressure relief valves at the above location only
(This authorization does not cover welding, brazing or fusing)**

AUTHORIZED: **March 15, 2021**

EXPIRES: **March 15, 2024**

CERTIFICATE NUMBER: **59272**

Handwritten signature of David E. Tuttle.

Board Chair, Conformity Assessment

Handwritten signature of Paul Blum.

Managing Director, Conformity Assessment



EU-Type Examination - Production Type Certificate

This is to certify that:

R. Conrader Company
3160-3200 West 22nd Street
Erie
Pennsylvania
16506
USA

Holds Certificate Number:

CE 616729

In respect of:

Safety Accessories.

On the basis of our examination under the requirements of Council Directive 2014/68/EU Module B of the Pressure Equipment Directive, as transposed into the law of The Netherlands Warenwetbesluit drukapparatuur 2016.

For and on behalf of BSI, a Notified
Body for the above Directive
(Notified Body Number 2797):



Drs. Dave Hagenisars, Managing Director

First Issued: 2014-08-11

Latest Issue: 2022-01-19

Expiry Date: 2024-08-10



Page: 1 of 2

...making excellence a habit.™

EU-Type Examination - Production Type Certificate

No. CE 616729

Additional Information

Limitations of Certificate Validity

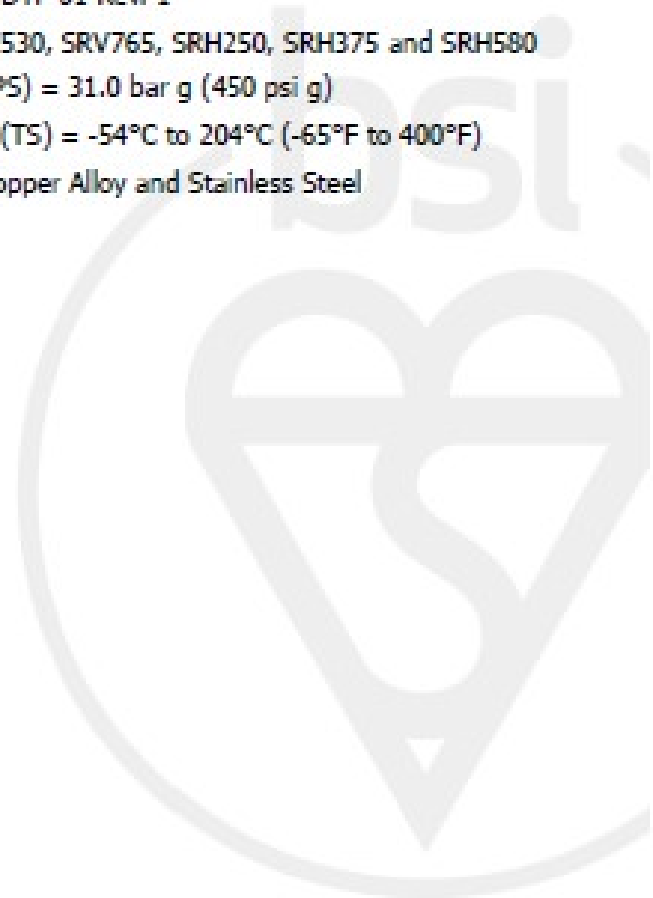
Technical File No. DTF-01 Rev. 1

Model Numbers: SRV187, SRV250, SRV390, SRV530, SRV765, SRH250, SRH375 and SRH580

Maximum Allowable Pressure (PS) = 31.0 bar g (450 psi g)

Minimum/Maximum Allowable Temperature (TS) = -54°C to 204°C (-65°F to 400°F)

Main Material of Manufacture – Copper Alloy and Stainless Steel



First Issued: 2014-08-11

Latest Issue: 2022-01-19

Expiry Date: 2024-08-10

Page: 2 of 2

This certificate has been issued by and remains the property of BSI Group The Netherlands B.V., John M. Keynesplein 3, 1066 EP Amsterdam, The Netherlands and should be returned immediately upon request.
To check its validity telephone +31 20 3460780. An electronic certificate can be authenticated [online](#).

BSI Group The Netherlands B.V., registered in the Netherlands under number 33264284, at John M. Keynesplein 3, 1066 EP Amsterdam, The Netherlands
A member of BSI Group of Companies.