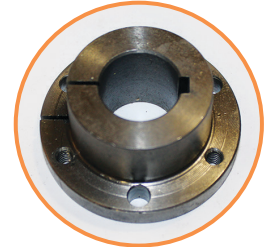


TPC Planetary Cutter

Part Number	Item	Size/Description
MZ8131-0021	Pneumatic Cylinder	1-1/16" Bore x 1" Stroke
MZ8378-0263	Timing Belt	AT10 BFX, 25 mm Wide
MZ8277-0221	Planetary Reducer	3:1 Ratio (cutter)
MZ8277-0010	Planetary Reducer	16:1 (Ratio table)
MZ8139-0010	Cassette	15 mm GDL, with Felt WIP
MZ8139-0007	Linear Rail	15 mm Wide x 1055 mm Long
MZ8377-0133	Synchronizing Belt	8 mm x 50 mm x 2400 mm
MZ8032-0444	Pillow Block Bearing	1-1/4"
MZ8028-0009	V-Groove Bearing	
MZ8295-1015	Cam Roller	1" O.D.
MZ8295-1017	Cam Roller	3/8" O.D.
MZ8028-0012	Ball Bearing	Precision Shielded
MZ8028-0206	Ball Bearing	1/8" x 3/8" x 5/32"
MZ8147-0007	Knob, 4 Prong	1/4-20 x 1" SS
8368-0021	Bushing	QD SH x 1" Bore
MZ8500-0011	Drive Ring for 3 head machine	
MZ8500-0010	Main hub for 3 head machine	
MZ8500-0015	Guard Switches	
MZ8500-0017	Motor Pulley for 2-5	
MZ8500-0018	Belt Idler - Long	
MZ8500-0022	Actiration Weight 2-5 machine	
MZ8500-0023	Counterbalance weight	
MZ05-175-1300	2.5" Round Blade	28 mm
MZ6000-0133	Fan Filter	
MZ7000-0013	Filter/reg	
MZ8011-0002	Lock-Tite® Kit	
MZ6000-0121-WC	Enclosure	Enclosure, 24" x 24" x 12" with Cutouts
MZ6000-0152		Subplate, 24" x 24"
MZ6000-0124	Fan	Vent Fan, 24 VDC, 34CFM
MZ6000-0133	Vent	Fan Filter, NEMA 14" SQ
MZ6150-0016	Gland	Cable Entry Sealing Gland, 4 Cables
MZ6010-0122-1	Disconnect	Disconnect, 60A, 600V, IEC
MZ6010-0124-1		Disconnect Handle, Red/Yellow
MZ6010-0127-1		Disconnect Shaft, 330 mm
MZ6160-0012		Cord, SOOW, 4cond, 14 AWG, 600V, 15A, UL
MZ6070-0004	Grounding	Terminal, Grounding, #4-#12 AWG



MZ8147-0007



8368-0021



MZ8500-0011



MZ8500-0010



MZ8500-0017



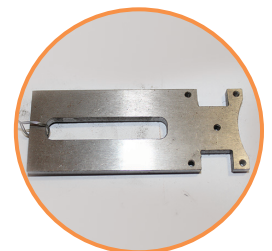
MZ8500-0018

TPC Planetary Cutter (continued)

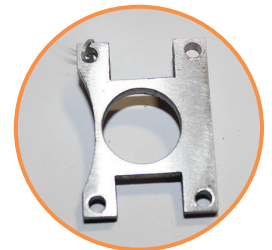
Part Number	Item	Size/Description
MZ6070-0033	Terminal 1	Terminal, Dual Circuit, 20A, 300V, #20-#12 AWG
MZ6070-0034		Terminal, End Barrier, Dual Circuit, 20A
MZ6070-0003		Terminal, Grounding, #22-#12 AWG
MZ6070-0005		Terminal, End Clamp
MZ6070-0009	Terminal 1	Terminal, Din 3 Rail, 35 mm
MZ6070-0035		Terminal, Jumper, 12 pole, 5 mm
MZ6070-0036		Terminal, Marker, Blank, 5 mm
MZ6070-0000	Terminal 2	Terminal, 30A, 600V, #22-#10 AWG
MZ6070-0003		Terminal, Grounding, #22-#12 AWG
MZ6070-0005		Terminal, End Clamp
MZ6070-0012		Terminal, Marker, Blank, 6 mm
MZ6070-0023	Duct	Wire Duct, 1"W x 3"H x 6'
MZ6070-0024		Wire Duct Cover, 1"W x 6'
MZ6010-0006	1CB	Fuse, 4A, 600V, Time Delay
MZ6020-0103	1 MC	Contact, 24 VDC, 3.0/5.0 Hp, 20 Amp
MZ6130-0015		Diode, Rectifier, 1N4006, 1A, 800V
MZ6050-0038	1PM	Servo Supply, 12.5/25 kW
MZ6050-0042	Amplifier 1	Servo Drive, 230/460 VAC, 4.2/8.3 kW, 10A
MZ6050-0071		Servo Module, Control, FM-4E
MZ6160-0036		Cable, CAT 5E, Ethernet, 7 ft.
MZ6050-0058	Cable 1	Servo Cable, Command, 5 ft., EN
MZ6050-0068	Cable 2	Servo Cable, MTR PWR, 3 m
MZ6050-0062	Cable 3	Servo Cable Encoder, 3 m, MDS-FM MTR
MZ6050-0129	Motor 1	Servo Motor, 460 VAC, 4.8A, 3.25 Hp
MZ6050-0042	Amplifier 2	Servo Drive, 230/460 VAC, 4.2/8.3 kW, 10A
MZ6050-0071		Servo Module Control, FM-4E
MZ6160-0036		Cable CAT5E, Ethernet, 7 ft.
MZ6050-0058	Cable 1	Servo Cable, Command, 5 ft., EN
MZ6050-0068	Cable 4	Servo Cable, MTR PWR, 3 m
MZ6050-0062	Cable 5	Servo Cable, Encoder, 3 m, MDS-FM MTR
MZ6050-0129	Motor 2	Servo Motor, 460 VAC, 4.8A, 3.25 Hp
MZ6060-0039	Power Supply	Supply, 380-480 VAC, 24 VDC, 4.2A
MZ6010-0077	6CB	Breaker, 6A, 277V, 1 Pole
27701401	1 SR	Relay Safety, 24 VAC/DC, 1.5W, 2 No Dual Channel, Time Delay
MZ6130-0015		Diode Rectifier, 1N4006, 1A, 800V
MZ6080-0028	1, 2 CR	Relay, 24 VDC, 1-250 VAC Out at 6A

TPC Planetary Cutter (continued)

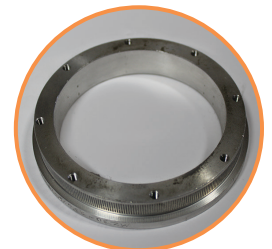
Part Number	Item	Size/Description
MZ6130-0015	1, 2 CR	Diode Rectifier, 1N4006, 1A, 800V
MZ6100-0031	1 ESW	Switch, Ethernet, 5Port, RJ45, 10/100 MBPS
MZ6000-0162	Enclosure 2	Enclosure, 12" x 12" x 6", Type 4
MZ6000-0158		Subplate, 12" x 12"
MZ6000-0088		Pendant, Flange Elbow
MZ8145-0103		Handle, Bridge Style; 9" Length
MZ6160-0052		Cable CTRL,18COND, 18 AWG, 600V
MZ6090-0019		1PB
MZ6090-0025	Operator, Latch, 22.5 mm	
MZ6090-0027	Contact Block, 22.5 mm, 1NC	
MZ6090-0005	2 PBL	Illum PB.head 22.5 mm Red
MZ6090-0011		Latch/Light MOD, 22.5 mm, Red
MZ6090-0001	1 LT	Pilot LT, Head, 22.5 mm, Red
MZ6090-0011		Latch/Light MOD, 22.5 mm, Red
MZ6100-0043	HMI	HMI, 7.0", Color, Touchscreen
105555109		HMI Overlay Graphic
MZ6160-0024		Cable CAT5E, Ethernet, 15 ft.
MZ6140-0018	1 PRS	PROX Inductive, 12 mm, PNP, NO
MZ6140-0021		PROX Cable, 5 m, M12, 3 Pin, 90-degree
MZ6140-0018	3 PRS	PROX Inductive, 12 mm, PNP, NO
MZ6140-0017		PROX Cable, 5 m, M8, 3 Pin, 90-degree
MZ6160-0028	Track	Cable Track, 1" x 3.0" x 4', 3.74" R
MZ6160-0059	3 RECP	Cable Assembly, Encoder, Female Panel Mount
MZ6150-0035	4 PL	Plug, Female, 3P, 3 Wire, 12A, 600V
MZ6150-0036	4 RECP	Recpt, Male, 3P, 3 Wire, 8A, 600V
MZ65-175-1303		Knife Holder
MZ05-175-1302		Knife Holder
MZ7020-0058	1 SOL	Valve Control, 1/8", 5/2, 24 VDC
MZ7020-0045		Connector Cable, 3 Pin, 24 VAC/DC, Lighted
MZ6160-0063 - 20 ft., 40 ft., 80 ft.	1 ENC	Cable Assembly, Encoder, Male/Male Ends
MZ7000-0013	1 REG	Filter/Reg, 1/4", 150PSI, 14SCFM
MZ7020-0044		Valve Ball, 1/4", Locking, Vented
MZ30-25675-1325		Knife Holder Cover Plate
MZ30-25675-1327		Inner Ring



MZ65-173-1303



MZ30-25675-1325



MZ30-25675-1327

TPC Planetary Cutter

Item	Part Number	Description	Material
1	MZ30-500-1315_A	Blade Holder Guide	304 Stainless Steel
2	MZ30-500-1316_A	Stop Plate	304 Stainless Steel
3	MZ30-500-1323_A	Linear Guide Track	Tool Steel
4	MZ30-500-1324_A	Driven Ring	6061-T6 Aluminum
5	MZ30-500-1325_B	Slide	6061-T6 Aluminum
6	MZ30-500-1326_C	Counter Weight	1018 CRS
7	MZ30-500-1327_A	Activation Weight	1018 CRS
8	MZ30-500-1328_A	Activation Weight	1018 CRS
9	MZ30-500-1329_D	BRG. Securing Ring	6061-T6 Aluminum
10	MZ30-500-1330_A	Inner Ring	6061-T6 Aluminum
11	MZ8028-0009	BRG. -Ball, V-Groove	304 Stainless Steel
12	MZ8295-1016	Cam Roller 3/8" OD	304 Stainless Steel
13	MZ8295-1017	Cam Roller 3/8" OD	304 Stainless Steel
14	MZ8028-0012	BRG, Ball, Precision Shielded	Carbon Steel
15	MZ30-500-1102	Cutter Head Assembly	



MZ30-500-1102

