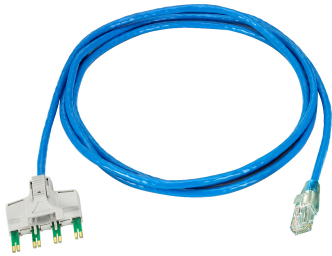


# TP6TB-BL10



Ultim8 Copper Patch Cord, 4-pair to RJ45, category 6, blue, 10 ft

## OBSOLETE

This product was discontinued on: December 17, 2020

### Replaced By:

C01E5H2	Highband® RJ45 Cat6 Patch Cord
C01G5G2	Highband® Cat6A Patch Cord, Front Facing to RJ45 Plug

## Product Classification

<b>Regional Availability</b>	Asia   Latin America   North America
<b>Product Type</b>	Twisted pair patch cord
<b>Product Brand</b>	Ultim 8®

## General Specifications

<b>ANSI/TIA Category</b>	6
<b>Cable Type</b>	U/UTP (unshielded)
<b>Conductor Type</b>	Stranded
<b>Interface, Connector A</b>	4-pair plug
<b>Interface, Connector B</b>	RJ45 plug
<b>Jacket Color</b>	Blue
<b>Pairs, quantity</b>	4
<b>Wiring</b>	T568B

## Dimensions

<b>Cord Length</b>	3.05 m   10.007 ft
<b>Compatible Conductor Gauge, stranded</b>	24 AWG

## Material Specifications

<b>Conductor Material</b>	Tin plated copper
---------------------------	-------------------

# TP6TB-BL10

---

## Environmental Specifications

<b>Operating Temperature</b>	-10 °C to +60 °C (+14 °F to +140 °F)
<b>Environmental Space</b>	Non-plenum
<b>Flammability Rating</b>	CM

## Regulatory Compliance/Certifications

<b>Agency</b>	<b>Classification</b>
CHINA-ROHS	Below maximum concentration value
REACH-SVHC	Compliant as per SVHC revision on <a href="http://www.commscope.com/ProductCompliance">www.commscope.com/ProductCompliance</a>
ROHS	Compliant
UK-ROHS	Compliant

