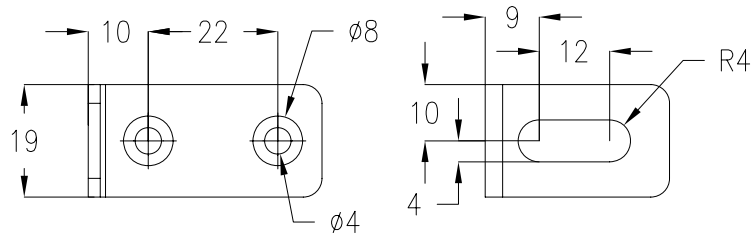


- NOTES:
1. PLEASE REFER TO APC PRODUCT MANUAL.
 2. ALL DIMENSIONS ARE IN MILLIMETERS.
 3. NET WEIGHT IS 2.89kg.
 4. LENGTH OF INPUT CORD IS 0.91 METERS.
 5. INSTALLATION MUST COMPLY WITH ALL APPLICABLE NATIONAL AND LOCAL ELECTRICAL REGULATIONS.

THIS DRAWING AND SPECIFICATIONS HEREIN ARE THE PROPERTY OF AMERICAN POWER CONVERSION AND SHALL NOT BE COPIED, REPRODUCED OR USED IN WHOLE OR IN PART, AS THE BASIS FOR THE MANUFACTURE OR SALE OF ITEMS WITHOUT WRITTEN PERMISSION FROM APC. THIS DRAWING IS BASED UPON LATEST AVAILABLE INFORMATION AND IS SUBJECT TO CHANGE WITHOUT NOTICE.

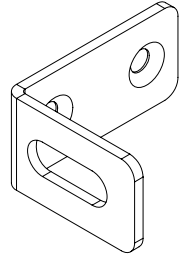


TITLE:	IN-LINE CURRENT METER 32A, 230V, 3P+N+E INPUT - (1) IEC 309 OUTPUT - (1) IEC 309 MAIN MECHANICAL	DWG NO:	AP7175	REV:	0
PROJECT: SUBMITTAL DRAWINGS	SHEET 1 OF 2	DRAWN:	C KRISHNA	01-APR-08	FIRST ANGLE PROJECTION
		ENGINEER:	T.HORSTMAN/Y.JIANG	01-APR-08	
		APPROVED:	C LARSEN	01-APR-08	

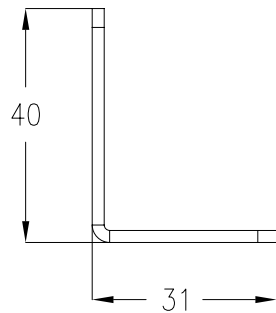


SIDE VIEW

FRONT VIEW

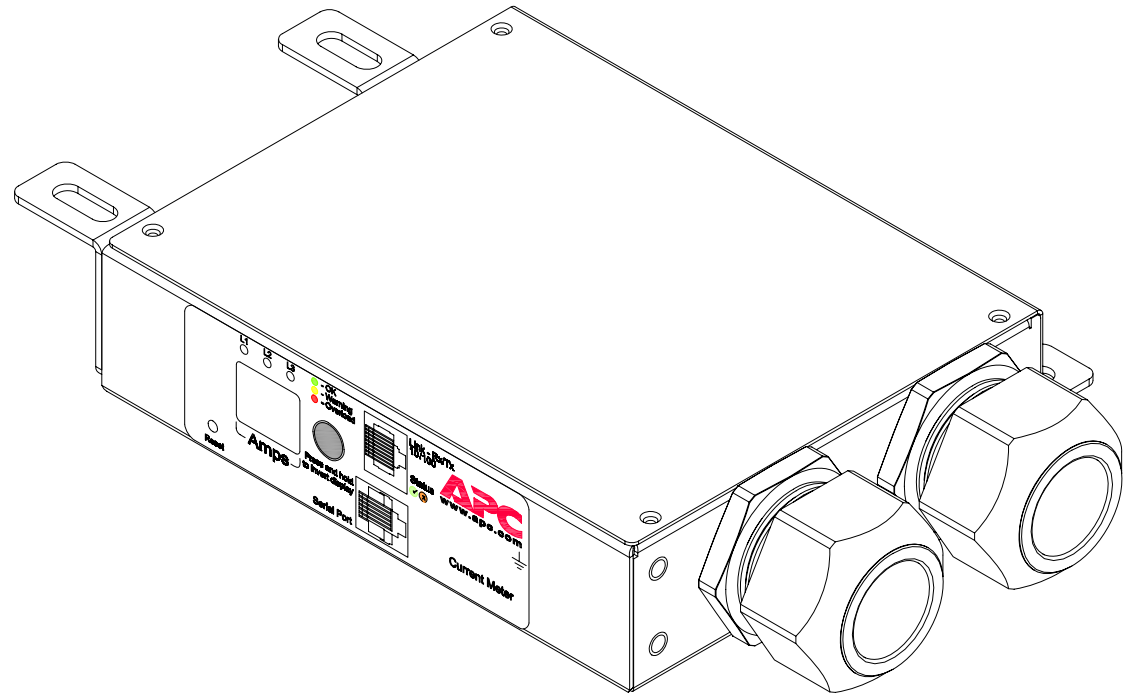


ISOMETRIC VIEW

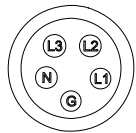


TOP VIEW

MOUNTING BRACKET DETAILS

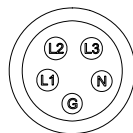


ISOMETRIC VIEW



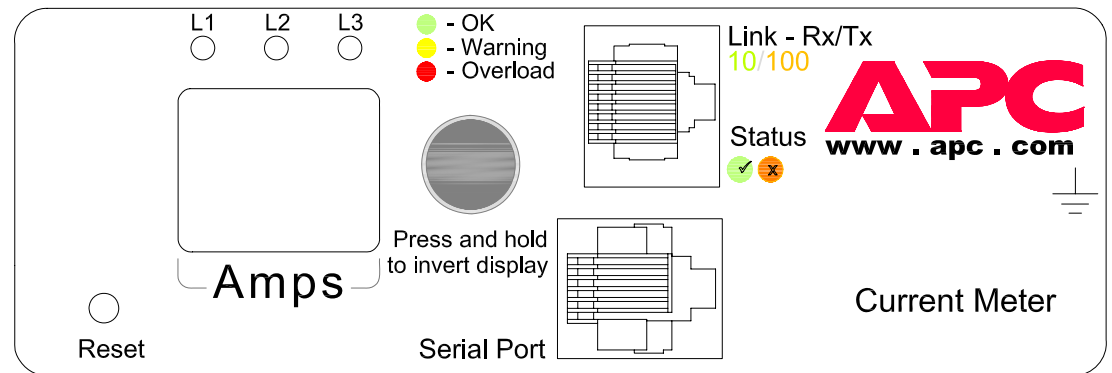
VIEW B

(IEC 309 32A 3P+N+E
INPUT PLUG ENLARGED)



VIEW C

(IEC 309 32A 3P+N+E
OUTPUT PLUG ENLARGED)



VIEW-A (DISPLAY INTERFACE-ENLARGED)

NOTES:

1. ALL DIMENSIONS ARE IN MILLIMETERS.
2. INSTALLATION MUST COMPLY WITH ALL APPLICABLE NATIONAL AND LOCAL ELECTRICAL REGULATIONS.

THIS DRAWING AND SPECIFICATIONS HEREIN ARE THE PROPERTY OF AMERICAN POWER CONVERSION AND SHALL NOT BE COPIED, REPRODUCED OR USED IN WHOLE OR IN PART, AS THE BASIS FOR THE MANUFACTURE OR SALE OF ITEMS WITHOUT WRITTEN PERMISSION FROM APC. THIS DRAWING IS BASED UPON LATEST AVAILABLE INFORMATION AND IS SUBJECT TO CHANGE WITHOUT NOTICE.



TITLE: IN-LINE CURRENT METER
32A, 230V, 3P+N+E
INPUT - (1) IEC 309
OUTPUT - (1) IEC 309
DETAILS AND ISOMETRIC VIEW

PROJECT: SUBMITTAL DRAWINGS SHEET 2 OF 2

DWG NO: AP7175

DRAWN: C KRISHNA 01-APR-08

ENGINEER: T.HORSTMAN/Y.JIANG 01-APR-08

APPROVED: C LARSEN 01-APR-08

REV. 0

FIRST ANGLE PROJECTION