



**Technical Service
Information Bulletin**

December 4, 2002

Title:
SHIFT LOCK ASSEMBLY
Models:
'01 – '02 LS 430 & '02 SC 430

T S I B

ELECTRICAL
EL011-02

Introduction Some customers may complain that intermittently, their vehicle will not shift out of park after depressing the brake pedal. A component in the shift lock assembly, the Shift Lever Anti-Rattle Cushion, has been changed to help prevent this condition.

- Applicable Vehicles**
- **2001 – 2002** model year **LS 430** vehicles produced before the VIN shown below.
 - **2002** model year **SC 430** vehicles produced before the VIN shown below.

**Production
Change
Information**

MODEL	STARTING VIN
LS 430	JTHBN30F*20070532
SC 430	JTHFN48Y*20025650

**Parts
Information**

PREVIOUS PART NUMBER	CURRENT PART NUMBER	PART NAME	QTY
33539-50090	Same	Shift Lever Anti-Rattle Cushion	1

**Warranty
Information**

OP CODE	DESCRIPTION	MODEL	TIME	OFF	T1	T2
EL2005	R & R Shift Lock Assembly	LS 430	1.6	33539-50090	23	83
		SC 430	0.5			

Applicable Warranty*:

This repair is covered under the Lexus Comprehensive Warranty. This warranty is in effect for 48 months or 50,000 miles, whichever occurs first, from the vehicle's in-service date.

* Warranty application is limited to correction of a problem based upon a customer's specific complaint.

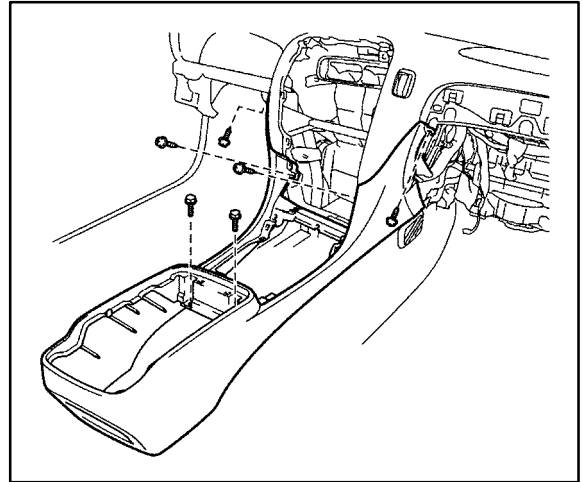


Repair Procedure:
LS 430

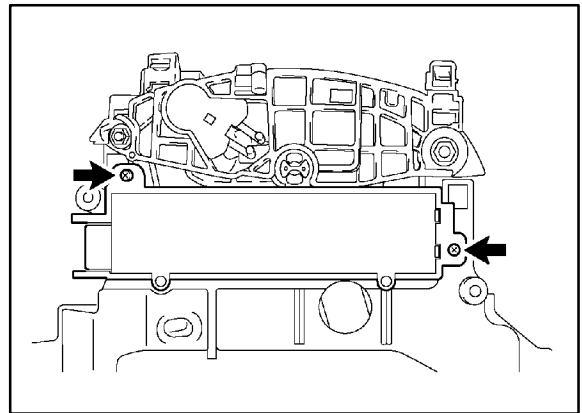
LS 430:

1. Remove center console box.
 Follow the instructions in the 2002 LS 430 Repair Manual, pages BO-129 through BO-133.

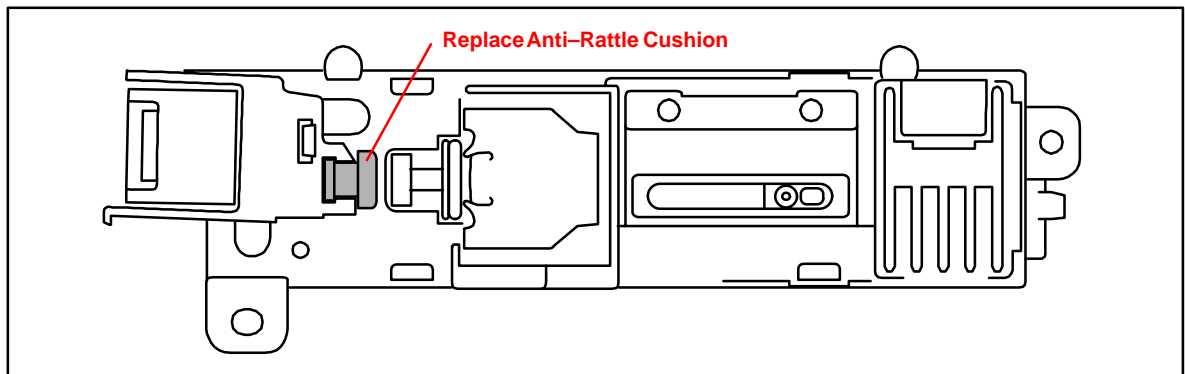
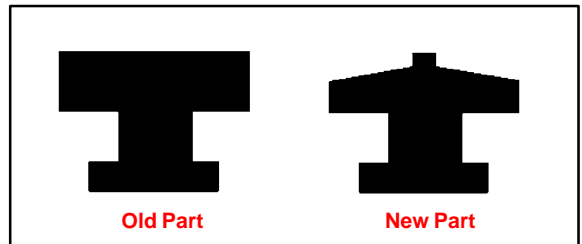
NOTE:
Steps 20 through 23 of the repair manual are not necessary for this repair.



2. Remove the shift lock control ECU sub-assembly, found on the driver's side of the shift assembly.



3. Remove the original shift lever anti-rattle cushion and replace with the new part, as shown in the illustrations.

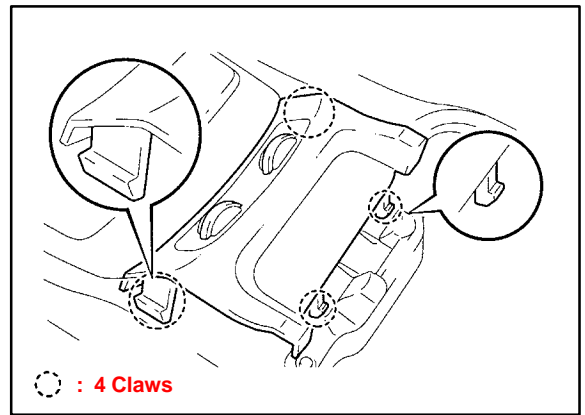


4. Reassemble and test for proper function.

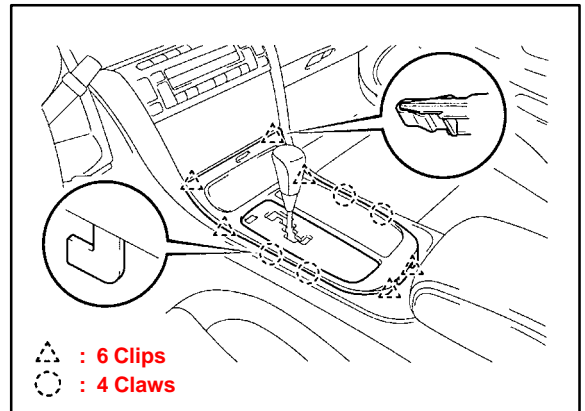
**Repair
Procedure:
SC 430**

SC 430:

1. Remove console panel sub-assembly upper.
 - A. Raise the center console door.
 - B. Using your thumbs, push forward on the back of the rear upper panel garnish, disengaging the rear claws.
 - C. Lift the garnish out of place.



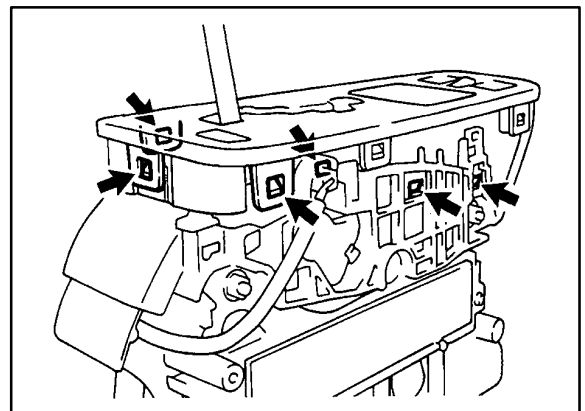
2. Remove upper console panel sub-assembly.
 - A. Shift the vehicle into neutral with the parking brake engaged.
 - B. With the ashtray door closed, lift the panel up and rearward to remove.



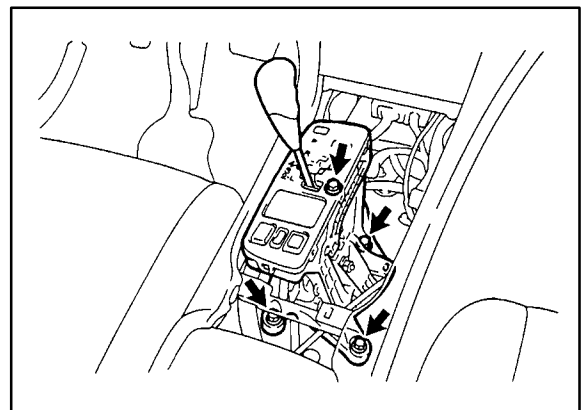
3. Remove shift position indicator.
 - A. Remove shift lever knob.
 - B. Remove shift position indicator.

NOTE:

The clear plastic tabs on the front are very fragile.



4. Loosen floor shift assembly.
 - A. Remove the 4 screws holding the shift assembly in place.
 - B. Lean the shift assembly over to the right.
5. Remove the shift lock control ECU sub-assembly and replace the rubber cushion as shown in the LS 430 repair steps 2 and 3 on previous page.



6. Reassemble and test for proper function.