

XEROX®

Technology | Document Management | Consulting Services

color laser printer

Small size,  
great **color**,  
exceptional value



# Phaser® 6125 / 6130 Color Laser Printers

## Big news in color printing.

Xerox makes color the easy choice with the refreshingly office-friendly, value-packed Phaser 6125 and Phaser 6130 color laser printers. They're compact printing solutions powerful enough to handle all of your office printing demands with ease.



## Productive performance

**Phaser 6125/6130 printers deliver the performance your workgroup needs to make quick work of every print job.**

- Don't let the low price fool you. Network-ready Phaser 6125/6130 printers mean business for your small office or workgroup, providing real-world print productivity and a host of built-in features.
- Superior laser printing gets your jobs out fast, with print speeds as quick as 12 ppm for color and 16 ppm for black-and-white.
- When you're ready to print, these printers jump to action, with a first-page-out time as fast as 14 seconds for black-and-white, 17 seconds for color.
- With a 333 MHz processor and 64 MB standard memory for the Phaser 6125 and 128 MB standard memory (expandable to 1,152 MB) for the Phaser 6130, these printers quickly handle complex print jobs — even pages with graphics, photos and charts.

## Outstanding color

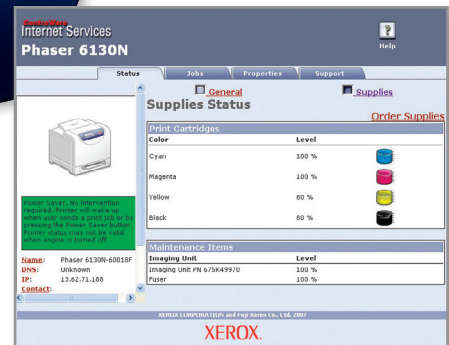
**Color or black-and-white, Phaser 6125/6130 printers take your office printing seriously, delivering outstanding results page after page.**

- A print resolution of up to 600 x 600 x 4 dpi delivers an amazing 16 shades of color per pixel. That means a wider color range for more impressive business graphics.
- Unique Xerox Emulsion Aggregate High Grade (EA-HG) toner technology — with particles engineered to have uniform size and shape — gives you crisp text and printed images with superior detail and clarity. It's the same high-quality toner used in our professional graphic-arts color devices.
- The Phaser 6130 printer includes True Adobe® PostScript® 3™ and PCL6 print languages to ensure your jobs are printed accurately every time.
- PANTONE® Color approved solid-color simulations and Xerox color correction technology to provide easy tools for precisely matching the colors of important business assets, such as company logos.

The intuitive front panel interface gives users quick and easy access to the printer's built-in features and settings.



Quickly check toner levels on the printer's front panel display or at your computer



## Technology that makes printing easy.

### Easy in the office...

A pure pleasure to operate, Phaser 6125/6130 printers always provide maximum ease of use.

- The standard 250-sheet paper tray supports a wide range of custom media and sizes, from labels to card-stock to envelopes. A convenient manual feed slot lets users feed single-sheet media and envelopes without opening and loading the paper tray.
- PrintingScout® works like a behind-the-scenes troubleshooter, delivering instant pop-up messages right to your desktop if print issues arise (available on Phaser 6130).
- Super-quiet operation lets you keep your printer nearby for distraction-free convenience.
- Optional RAM storage on Phaser 6130 lets you store frequently printed documents on the device for quick and easy walkup printing. It also adds useful features like collating and proof printing, and increases security by requiring a password before printing.
- The Run Black feature lets Phaser 6125/6130 printers keep printing in black-and-white even if they run out of color toner.

Only four replacement items: the ultra-slim, easy-to-load toner cartridges that come with far less packaging and take up substantially less storage space.

### ...easy on the network

Phaser 6125/6130 printers easily fit your network and your workgroup, making more people more productive.

- Easy installation onto the network and pre-loaded toner cartridges make this printer virtually plug-and-play. It's so easy, you'll have it up and printing in minutes.
- The CentreWare IS internal web server lets users check the status of a print job or manage the device without leaving their computers.
- The Phaser 6130 printer supports Apple Bonjour™ (standard) and includes easy-to-use print drivers for both PCs and Macs, making it perform beautifully in mixed environments.
- Get additional network protocols and security features, including IPv6 support, with the optional multi-protocol network card (available on Phaser 6130).



Call today. For more information, call **1-877-362-6567** or visit us at **www.xerox.com/office**



	Phaser 6125	Phaser 6130
<b>Speed</b>	Up to 12 ppm color / 16 ppm black-and-white	
<b>Duty cycle</b>	Up to 40,000 pages / month <sup>1</sup>	
<b>Paper Handling</b>	<b>Tray 1:</b> 250 sheets, Custom sizes: 3 x 5 in. to 8.5 x 14 in. / 76.2 x 127 mm to 216 x 355.6 mm <b>Manual Feed Slot:</b> 1 sheet, Custom sizes: 3 x 5 in. to 8.5 x 14 in. / 76.2 x 127 mm to 216 x 355.6 mm	
Paper output	150 sheets	
<b>Print</b>	As fast as 17 seconds color / 14 seconds black-and-white	
First-page-out time		
Resolution (max)	600 x 600 x 4 dpi	
Processor	333 MHz	
Memory (std / max)	64 MB / 64 MB	128 MB / 1,152 MB
Connectivity	10/100 Base-TX Ethernet, USB 2.0	
Page Description Languages	Host-Based	PCL® 6 emulation, Adobe® PostScript® 3™
Mac OS® support	NA	Standard
Print features	Skip blank pages, N-up, Fit to new page size, Booklet printing <sup>2</sup> , Watermarks <sup>2</sup> , Poster <sup>2</sup>	
		Banner sheets <sup>2</sup> , Secure Print <sup>3</sup> , Proof Print <sup>3</sup> , RAM collation <sup>3</sup>
<b>Warranty</b>	One year on-site warranty, Xerox Total Satisfaction Guarantee	

<sup>1</sup> Print volume uniformly distributed over 30 days  
<sup>2</sup> On Phaser 6130, these features accessed via PCL driver  
<sup>3</sup> Requires minimum 256 MB memory

**Device Management**

CentreWare® IS Embedded Web Server, CentreWare Web, PrintingScout®\*, Email alerts

**Print Drivers**

Windows® 2000/2003 Server/XP/XP Home Edition (SP1 or higher), Vista, Mac OS®X version 10.2 or higher\*, Linux: SUSE™ 9.2/9.3\*, Turbo Linux™ 10\*, Red Hat® ES3/ES4\*, Fedora™ Core 1\*, Yellow Dog 3.X\*

**Font Support**

PostScript® fonts\*: 136; PCL® fonts: 81\*

**Media Handling**

Media weights: 17–40 lb. bond to 80 lb. cover / 65–220 gsm  
 Manual two-sided printing: 17–40 lb. bond / 65–164 gsm  
 Media types: Plain paper, glossy coated, envelopes, labels, card stock, business cards

\* Phaser 6130 only

**Maximum Printable Area**

8.0 in. 13.5 in. (0.5 in. border)  
 208 mm x 347 mm (5 mm border)

**Color Standards**

PANTONE® Color approved solid-color simulations, Xerox Color Correction, ICC Profile

**Operating Environment**

Temperature: Storage: 32° to 95° F / 0° to 35° C, operating: 50° to 90° F / 10° to 32° C

Humidity: 15% to 80%

Sound pressure levels:

Printing: 51.6 dB(A)  
 Standby: 25.7 dB(A)  
 Sound power levels: Printing: 6.46 B, Standby: 4.30 B  
 Warm-up time: 30 seconds or less

**Electrical**

Power: 110–127 VAC, 50/60 Hz or 220–240 VAC, 50/60 Hz  
 Power consumption: Standby: <50 W  
 Printing: 280 W  
 Power save: 5 W or less  
 ENERGY STAR® qualified

**Dimensions (WxDxH)**

15.75 x 17.5 x 15.3 in. / 400 x 445 x 389 mm  
 Weight: 38 lb. / 17.2 kg

**Package Dimensions (WxDxH)**

21.1 x 20.4 x 22.2 in. / 543 x 518 x 565 mm  
 Weight: 46.2 lb. / 21.0 kg

**Certifications**

FCC Part 15, Class B, Listed UL 60950-1/ CSA 60950-1-03, CE Mark applicable to Directives 73/23/EEC and 89/336/EEC, Section 508 ADA

**What Comes In The Box**

- Printer
- Toner Cartridges (Phaser 6125: 500 page<sup>1</sup> black and color, Phaser 6130: 1,000 page<sup>1</sup> black and color)
- World Kit (includes Software and Documentation CD, Installation and Quick Use Guides, Warranty Booklet, Registration Card)
- Power cord

**Phaser 6125**

**Supplies**

Toner Cartridge<sup>1</sup>:  
 Black: 2,000 std. pages 106R01334  
 Cyan: 1,000 std. pages 106R01331  
 Magenta: 1,000 std. pages 106R01332  
 Yellow: 1,000 std. pages 106R01333  
 (Printer ships with 500 page<sup>1</sup> black and color toner cartridges.)

**Phaser 6130**

**Supplies**

Toner Cartridge<sup>1</sup>:  
 Black: 2,500 std. pages 106R01281  
 Cyan: 1,900 std. pages 106R01278  
 Magenta: 1,900 std. pages 106R01279  
 Yellow: 1,900 std. pages 106R01280  
 (Printer ships with 1,000 page<sup>1</sup> black and color toner cartridges.)

**Options**

256 MB Phaser Memory<sup>2</sup> 097S03743  
 512 MB Phaser Memory<sup>2</sup> 097S03635  
 Multi-Protocol Network Card<sup>2</sup> 097S03745  
 Wireless Network Adapter<sup>2</sup> 097S03740

<sup>1</sup> Average Continuous Composite CMY Yield in accordance with ISO/IEC 19798. Yield will vary based on image, area coverage and print mode.

<sup>2</sup> Available for Phaser 6130 only



Phaser 6130