



## **Cisco Wireless IP Phone 882x Series Accessory Guide**

**First Published:** 2016-08-26

**Last Modified:** 2024-01-12

### **Americas Headquarters**

Cisco Systems, Inc.  
170 West Tasman Drive  
San Jose, CA 95134-1706  
USA  
<http://www.cisco.com>  
Tel: 408 526-4000  
800 553-NETS (6387)  
Fax: 408 527-0883

THE SPECIFICATIONS AND INFORMATION REGARDING THE PRODUCTS IN THIS MANUAL ARE SUBJECT TO CHANGE WITHOUT NOTICE. ALL STATEMENTS, INFORMATION, AND RECOMMENDATIONS IN THIS MANUAL ARE BELIEVED TO BE ACCURATE BUT ARE PRESENTED WITHOUT WARRANTY OF ANY KIND, EXPRESS OR IMPLIED. USERS MUST TAKE FULL RESPONSIBILITY FOR THEIR APPLICATION OF ANY PRODUCTS.

THE SOFTWARE LICENSE AND LIMITED WARRANTY FOR THE ACCOMPANYING PRODUCT ARE SET FORTH IN THE INFORMATION PACKET THAT SHIPPED WITH THE PRODUCT AND ARE INCORPORATED HEREIN BY THIS REFERENCE. IF YOU ARE UNABLE TO LOCATE THE SOFTWARE LICENSE OR LIMITED WARRANTY, CONTACT YOUR CISCO REPRESENTATIVE FOR A COPY.

The following information is for FCC compliance of Class A devices: This equipment has been tested and found to comply with the limits for a Class A digital device, pursuant to part 15 of the FCC rules. These limits are designed to provide reasonable protection against harmful interference when the equipment is operated in a commercial environment. This equipment generates, uses, and can radiate radio-frequency energy and, if not installed and used in accordance with the instruction manual, may cause harmful interference to radio communications. Operation of this equipment in a residential area is likely to cause harmful interference, in which case users will be required to correct the interference at their own expense.

The following information is for FCC compliance of Class B devices: This equipment has been tested and found to comply with the limits for a Class B digital device, pursuant to part 15 of the FCC rules. These limits are designed to provide reasonable protection against harmful interference in a residential installation. This equipment generates, uses and can radiate radio frequency energy and, if not installed and used in accordance with the instructions, may cause harmful interference to radio communications. However, there is no guarantee that interference will not occur in a particular installation. If the equipment causes interference to radio or television reception, which can be determined by turning the equipment off and on, users are encouraged to try to correct the interference by using one or more of the following measures:

- Reorient or relocate the receiving antenna.
- Increase the separation between the equipment and receiver.
- Connect the equipment into an outlet on a circuit different from that to which the receiver is connected.
- Consult the dealer or an experienced radio/TV technician for help.

Modifications to this product not authorized by Cisco could void the FCC approval and negate your authority to operate the product.

The Cisco implementation of TCP header compression is an adaptation of a program developed by the University of California, Berkeley (UCB) as part of UCB's public domain version of the UNIX operating system. All rights reserved. Copyright © 1981, Regents of the University of California.

NOTWITHSTANDING ANY OTHER WARRANTY HEREIN, ALL DOCUMENT FILES AND SOFTWARE OF THESE SUPPLIERS ARE PROVIDED "AS IS" WITH ALL FAULTS. CISCO AND THE ABOVE-NAMED SUPPLIERS DISCLAIM ALL WARRANTIES, EXPRESSED OR IMPLIED, INCLUDING, WITHOUT LIMITATION, THOSE OF MERCHANTABILITY, FITNESS FOR A PARTICULAR PURPOSE AND NONINFRINGEMENT OR ARISING FROM A COURSE OF DEALING, USAGE, OR TRADE PRACTICE.

IN NO EVENT SHALL CISCO OR ITS SUPPLIERS BE LIABLE FOR ANY INDIRECT, SPECIAL, CONSEQUENTIAL, OR INCIDENTAL DAMAGES, INCLUDING, WITHOUT LIMITATION, LOST PROFITS OR LOSS OR DAMAGE TO DATA ARISING OUT OF THE USE OR INABILITY TO USE THIS MANUAL, EVEN IF CISCO OR ITS SUPPLIERS HAVE BEEN ADVISED OF THE POSSIBILITY OF SUCH DAMAGES.

Any Internet Protocol (IP) addresses and phone numbers used in this document are not intended to be actual addresses and phone numbers. Any examples, command display output, network topology diagrams, and other figures included in the document are shown for illustrative purposes only. Any use of actual IP addresses or phone numbers in illustrative content is unintentional and coincidental.

All printed copies and duplicate soft copies of this document are considered uncontrolled. See the current online version for the latest version.

Cisco has more than 200 offices worldwide. Addresses and phone numbers are listed on the Cisco website at [www.cisco.com/go/offices](http://www.cisco.com/go/offices).

Cisco and the Cisco logo are trademarks or registered trademarks of Cisco and/or its affiliates in the U.S. and other countries. To view a list of Cisco trademarks, go to this URL: <https://www.cisco.com/c/en/us/about/legal/trademarks.html>. Third-party trademarks mentioned are the property of their respective owners. The use of the word partner does not imply a partnership relationship between Cisco and any other company. (1721R)

© 2016–2024 Cisco Systems, Inc. All rights reserved.



## CONTENTS

---

### CHAPTER 1

#### Accessories for Your Cisco Wireless IP Phone 1

##### Supported Accessories 1

##### New and Changed Information 1

##### New and Changed Information for Cisco Wireless IP Phone 8821 Silicone Case 1

##### New and Changed Information for Cisco Wireless IP Phone 8821-EX Support 2

##### New and Changed Information for Firmware Release 11.0(5)SR1 2

##### New and Changed for Firmware Release 11.0(5) 2

##### Accessory Guidelines 2

##### Important Headset Safety Information 3

##### Cisco Wireless IP Phone 882x Series Documentation 3

##### Cisco Product Security Overview 3

---

### CHAPTER 2

#### Cisco Accessories 5

##### Batteries 5

##### Damaged Battery Identification 7

##### Cisco Wireless IP Phone 8821 AC Power Adapter 8

##### Prepare the Power Adapter 9

##### Charge the Battery with the AC Power Supply 10

##### USB Cable 11

##### Charge the Battery with the USB Cable and a USB Port on Your Computer 11

##### Desktop Chargers 12

##### Set Up the Desktop Charger 13

##### Charge Your Phone with the Desktop Charger 14

##### Charge Your Spare Battery with the Desktop Charger 16

##### Multichargers 16

##### Set Up the Multicharger 17

Install the Multicharger Wall Mount Kit	17
Charge Your Phone with the Multicharger	19
Charge Your Spare Battery with the Multicharger	20
Carry Cases	21
Silicone Case	22
Install the Cisco Wireless IP Phone 8821 Silicone Case	23
Clean the Silicone Case	25
Other Accessories	25
Cisco Accessory Part Numbers	26
Desktop Charger Specifications	29
Multicharger Specifications	31

---

**CHAPTER 3****Third-Party Accessories 33**

Third-Party Accessories Overview	33
Headsets	33
Bluetooth Wireless Headsets	33
Headset Choices	34



## CHAPTER 1

# Accessories for Your Cisco Wireless IP Phone

- [Supported Accessories, on page 1](#)
- [Accessory Guidelines, on page 2](#)
- [Cisco Wireless IP Phone 882x Series Documentation, on page 3](#)
- [Cisco Product Security Overview, on page 3](#)

## Supported Accessories

You can use a number of accessories with your Cisco Wireless IP Phone 882x Series phone. Some accessories are Cisco products and other accessories are third-party products.



**Note** The Cisco Wireless IP Phone 8821-EX has not been tested for wired and Bluetooth headsets in hazardous locations.

For a list of supported Cisco accessories and Cisco part numbers, see [Cisco Accessory Part Numbers, on page 26](#).

## New and Changed Information

### New and Changed Information for Cisco Wireless IP Phone 8821 Silicone Case

The following updates were made to the document.

Feature	Description
Cisco Wireless IP Phone 8821 Silicone Case	The following sections are new or updated: <ul style="list-style-type: none"><li>• <a href="#">Silicone Case, on page 22</a></li><li>• <a href="#">Cisco Accessory Part Numbers, on page 26</a></li></ul>
Cisco Wireless IP Phone 8821 and 8821-EX Lanyard	The following sections are updated: <ul style="list-style-type: none"><li>• <a href="#">Cisco Wireless IP Phone 8821 and 8821-EX Lanyards, on page 25</a></li></ul>

## New and Changed Information for Cisco Wireless IP Phone 8821-EX Support

The following updates were made to the document.

Feature	Description
Cisco Wireless IP Phone 8821-EX Support	<a href="#">Batteries, on page 5</a> <a href="#">Desktop Chargers, on page 12</a> <a href="#">Multichargers, on page 16</a>
Battery information update	<a href="#">Damaged Battery Identification, on page 7</a> <a href="#">Batteries, on page 5</a>

## New and Changed Information for Firmware Release 11.0(5)SR1

The following updates were made to the document.

Feature	Description
Minor updates	<a href="#">Batteries, on page 5</a>

## New and Changed for Firmware Release 11.0(5)

The following table describes changes to this book to support Firmware Release 11.0(5).



**Note** Cisco Wireless IP Phone 8821 Firmware Release 11.0(5) has been deferred. The features from the release are available in subsequent firmware releases.

Feature Name	Updates
New Chargers for the Cisco Wireless IP Phone 8821	<a href="#">Batteries, on page 5</a> <a href="#">Desktop Chargers, on page 12</a> <a href="#">Multichargers, on page 16</a> <a href="#">Cisco Accessory Part Numbers, on page 26</a>

## Accessory Guidelines

Follow these guidelines when using accessories with your Cisco Wireless IP Phone 882x Series:

- Use only chargers, batteries, and accessories that are approved by the phone manufacturer. Use of unapproved chargers, batteries, and accessories might be dangerous, and invalidates the warranty on your phone.
- Do not adhere a clip to the back of the phone or insert a clip between the phone and battery cover because it can damage the battery.

- When disconnecting the power cord of any accessory, grasp and pull the plug. Do not pull the cord.
- Keep accessories out of the reach of young children.
- Clean the phone with a soft, dry cloth or a moist wipe.
- The phone is resistant to dust and spills, but you can further protect your phone with a cover case.



---

**Note** The Cisco Wireless IP Phone 8821-EX has not been tested for wired and Bluetooth headsets in hazardous locations.

---

## Important Headset Safety Information



High Sound Pressure—Avoid listening to high volume levels for long periods to prevent possible hearing damage.

When you plug in your headset, lower the volume of the headset speaker before you put the headset on. If you remember to lower the volume before you take the headset off, the volume will start lower when you plug in your headset again.

Be aware of your surroundings. When you use your headset, it may block out important external sounds, particularly in emergencies or in noisy environments. Don't use the headset while driving. Don't leave your headset or headset cables in an area where people or pets can trip over them. Always supervise children who are near your headset or headset cables.

## Cisco Wireless IP Phone 882x Series Documentation

Find documentation that is specific to your phone model, call control system, and language on the product support page for the [Cisco Wireless IP Phone 8821](#) and [Cisco Wireless IP Phone 8821-EX](#). From these pages, you can also find the [Cisco Wireless IP Phone 8821 and 8821-EX Wireless LAN Deployment Guide](#) and [Cisco Wireless IP Phone 8821 and 8821-EX Solution Compatibility Matrix](#).

## Cisco Product Security Overview

This product contains cryptographic features and is subject to United States and local country laws governing import, export, transfer, and use. Delivery of Cisco cryptographic products does not imply third-party authority to import, export, distribute, or use encryption. Importers, exporters, distributors, and users are responsible for compliance with U.S. and local country laws. By using this product you agree to comply with applicable laws and regulations. If you are unable to comply with U.S. and local laws, return this product immediately.

Further information regarding U.S. export regulations may be found at <http://www.bis.doc.gov/index.php/regulations/export-administration-regulations-ear>.







## CHAPTER 2

# Cisco Accessories

---

- Batteries, on page 5
- Cisco Wireless IP Phone 8821 AC Power Adapter, on page 8
- USB Cable, on page 11
- Desktop Chargers, on page 12
- Multichargers, on page 16
- Carry Cases, on page 21
- Silicone Case, on page 22
- Other Accessories, on page 25
- Cisco Accessory Part Numbers, on page 26
- Desktop Charger Specifications, on page 29
- Multicharger Specifications, on page 31

## Batteries

Your phone comes with a Lithium ion battery, and you can order spare batteries.

You can find the battery installation instructions in the *Cisco Wireless IP Phone 8821 and 8821-EX User Guide*.



---

**Caution** Use only approved batteries. Use of unapproved batteries might be dangerous, and invalidates the warranty on your phone.

---

The fully charged battery provides the following hours of service:

- Up to 11.5 hours of talk time (depends on phone firmware and charger version)

The following table shows the differences in talk time when you use:

- The new 4.35V Cisco Wireless IP Phone 8821 Desktop Charger and Cisco Wireless IP Phone 8821 Multi Charger
- The Cisco Wireless IP Phone 8821-EX Desktop Charger and Cisco Wireless IP Phone 8821-EX Multi Charger

Table 1: Comparison of Talk Times

Condition	Original Cisco Wireless IP Phone 8821 Desktop Charger and Cisco Wireless IP Phone 8821 Multi Charger	New Cisco Wireless IP Phone 8821 Desktop Charger and Cisco Wireless IP Phone 8821 Multi Charger	Cisco Wireless IP Phone 8821-EX Desktop Charger and Cisco Wireless IP Phone 8821-EX Multi Charger
Phone charged in charger, with wall adapter, or with USB Phone running Firmware Release 11.0(4)SR3 or earlier	9.5 hours	9.5 hours	9.5 hours
Phone charged in charger, with wall adapter, or with USB Phone running Firmware Release 11.0(5) or later	11.5 hours	11.5 hours	9.5 hours
Spare battery charged in the charging slot	9.5 hours	11.5 hours	9.5 hours

- Up to 145 hours of standby time

Battery life depends on a number of factors including:

- On time—The battery life is reduced when the phone is turned on. Calls, messages, application use, Bluetooth use, and actions like menu navigation use power.
- Scan mode—Your phone can be set up to scan the access points in three different ways (Continuous, Auto, Single AP). If your phone uses Continuous or Auto scan modes, the phone requires more power, which reduces battery talk time.



**Caution** The expected lifecycle for a battery is two years. Based on the average usage, this corresponds to approximately 500 charges. You can check the date printed on the battery to calculate the age of the battery. We recommend you to replace the battery when it reaches its end of life.

If you require longer talk times, you will find it useful to have a spare, charged battery.

For battery specifications, see the *Cisco Wireless IP Phone 8821 Data Sheet* and *Cisco Wireless IP Phone 8821-EX Data Sheet* at <http://www.cisco.com/c/en/us/products/collaboration-endpoints/unified-ip-phone-8800-series/datasheet-listing.html>

#### Related Topics

[Cisco Accessory Part Numbers](#), on page 26

## Damaged Battery Identification

Your phone battery can develop physical signs of damage. Physical signs include:

- Swelling
- Bending
- Broken end caps



---

**Caution** Check the battery and battery compartment for physical signs of damage before you replace your battery. Don't use a damaged battery in your phone. Properly dispose of the damaged battery and use a new one.

---

### Swollen Battery

#### Identification

- The battery doesn't sit flat on a table. It may rock if you touch the corners.
- The installed battery is not flat in the battery compartment.
- The back cover won't completely close (especially in the middle of the door)
- The battery doesn't fall out of the battery compartment when you try to remove it. You may *think* that you need to pry the battery out of the compartment.



---

**Caution** Don't try to pry the battery out of the compartment.

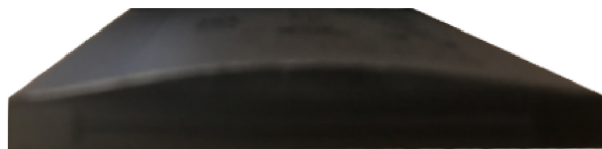
---

#### Examples

The next image shows a swollen battery from the end.



The next image shows another swollen battery.



The next image shows a swollen battery in the battery compartment. Notice that the battery isn't flush with the compartment walls around the battery perimeter.



The next image shows the same swollen battery when the cover is put on. Notice that the middle of the cover is arched. The catches in the middle of the cover won't easily connect.



The battery may also swell along the length or width, which makes the battery hard to remove. Don't use any instrument to pry the battery out.

### **Bent Battery**

#### **Identification**

The battery doesn't sit flat on a table. It may rock if you touch the corners.

#### **Example**



### **End Caps are Broken or Damaged**

#### **Identification**

The plastic caps at the ends of the battery aren't properly attached.

#### **Example**



## **Cisco Wireless IP Phone 8821 AC Power Adapter**

The Cisco Wireless IP Phone 8821 AC Power Adapter enables you to quickly charge your phone battery. You can use the phone while you are charging the battery. When you order your phone, make sure that you order the power adapter for your region.

The battery takes approximately 3 hours to recharge using the AC Power Adapter.



**Caution** Use only Cisco-specified AC power supplies for the Cisco Wireless IP Phone 882x Series.

#### Related Topics

[Cisco Accessory Part Numbers](#), on page 26

## Prepare the Power Adapter

The power adapter for your phone is compact. Before you use the power adapter, you have to unfold the prongs. After you use the adapter, you can fold in the prongs.

The power adapter for your region may also require an additional clip to allow the adapter to be plugged into the electrical outlet.

#### Procedure

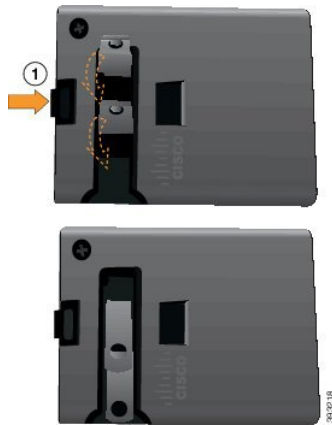
**Step 1** Catch the edge of a prong with your finger and pull the prong up until it clicks into position.



**Step 2** (Optional) Install the international power clip.

**Step 3** (Optional) Before you close the adapter, remove the international power clip.

**Step 4** (Optional) Hold the lever on the top of the adapter down and press the prongs down to close the adapter.



## Charge the Battery with the AC Power Supply

You can charge your phone using an AC power supply. When you use the power supply to charge your phone, the battery can take up to 3 hours to fully charge.

The wide connector on the USB cable connects to the phone using magnets to hold it secure. It has pins that you need to align correctly. If you hold the phone so that the screen is towards you, the battery icon on the connector is visible.



**Caution** Do not charge the phone in a hazardous environment.  
Do not charge the phone if it is wet.

### Before you begin

You need the USB power cable supplied with your phone.

You need to prepare the power adapter for use as described in [Prepare the Power Adapter, on page 9](#).

## Procedure

- Step 1** Plug the USB cable into the bottom of the phone with the pins aligned.
- Step 2** Plug the USB cable into the power adapter.
- Step 3** Plug the power adapter into the electrical outlet.

## USB Cable

You can connect your phone to your computer using a special USB cable.

The wide connector on the USB cable connects to the phone with magnets to hold it secure. It has pins that you must align correctly. If you hold the phone so that the screen is toward you, the battery icon on the connector is visible.

### Related Topics

[Cisco Accessory Part Numbers](#), on page 26

## Charge the Battery with the USB Cable and a USB Port on Your Computer

You can charge your phone using your computer. When you use the computer to charge your phone, the battery can take up to 6 hours to fully charge.

The wide connector on the USB cable connects to the phone using magnets to hold it secure. It has pins that you need to align correctly. If you hold the phone so that the screen is towards you, the battery icon on the connector is visible.






---

**Caution** Do not charge the phone in a hazardous environment.  
Do not charge the phone if it is wet.

---

### Procedure

- 
- Step 1** Connect the long connector of the USB cable to the bottom of the phone with the pins aligned.  
**Step 2** Plug the other end into the USB port in the computer.
- 

## Desktop Chargers

You can use the Cisco Wireless IP Phone 8821 Desktop Charger to charge your Cisco Wireless IP Phone 8821 and spare phone battery. The charger works on AC power or from a charged spare phone battery. It can be secured with a standard laptop cable lock. This charger has a label on the back to show the maximum voltage (4.35 V).

You can use the Cisco Wireless IP Phone 8821-EX Desktop Charger to charge your Cisco Wireless IP Phone 8821-EX and spare phone battery. The charger works on AC power or from a charged spare phone battery. It can be secured with a standard laptop cable lock. The charger looks the same as the Cisco Wireless IP Phone 8821 Desktop Charger except that it shows the graphic of the Cisco Wireless IP Phone 8821-EX and doesn't have the voltage label.

The following figure shows the charger with a phone.

*Figure 1: Cisco Wireless IP Phone 8821 and Cisco Wireless IP Phone 8821 Desktop Charger*




---

**Caution** The Cisco Wireless IP Phone 8821 Desktop Charger can only charge the Cisco Wireless IP Phone 8821 and a spare battery for that phone. You can't charge the Cisco Wireless IP Phone 8821-EX or its spare batteries in the Cisco Wireless IP Phone 8821 Desktop Charger.

---



In this document, the term *desktop charger* refers to both chargers.

If your phone has a protective case, you don't need to remove the case before you charge the phone in the desktop charger. You adapt the charger to fit the phone.

You can use a USB to Ethernet adapter (dongle) to connect the desktop charger to the Ethernet for only automatic Wi-Fi profile provisioning and certificate enrollment purposes. You cannot use the dongle to make voice calls over the Ethernet. For more information on the USB port, see the *Cisco Wireless IP Phone 8821 and 8821-EX Administration Guide*.



---

**Caution** Do not use chargers or handsfree mode in a Potentially Explosive Atmosphere.  
Do not charge the phone if it is wet.

---

### Built-in Speakerphone

The charger includes a speakerphone that you can use while the phone is docked. Use the phone volume buttons to control the speakerphone volume, and the **Mute** button on the charger itself. When the speakerphone is muted, the **Mute** button lights red.

### Phone Charging Indications

When you put the phone into the charger, the phone indicates that the battery is charging with the red LED on the top of the phone. If the phone is turned on when you put it into the charger, you see a message on the screen. If the phone is turned off or the battery is too weak, you see an icon displayed on the screen. When the battery is charged, the phone LED is green.

### Spare Battery Charging Indications

You can charge a spare battery with the additional charging port behind the main phone charging port. When you put a spare battery into the charger, the Battery LED (to the right of the phone) lights to show the charging status:

- Red—The spare battery is charging.
- Green—The spare battery is fully charged.

### Related Topics

[Desktop Charger Specifications](#), on page 29

[Cisco Accessory Part Numbers](#), on page 26

## Set Up the Desktop Charger

Place the desktop charger on a stable work surface.

### Before you begin

You need the cable that comes with the charger. This cable has a round barrel plug on one end and a USB connector on the other end.

You need the power adapter that comes with the charger.



---

**Note** Don't use the power adapter that came with the phone; it doesn't work with the charger. Check the list of Cisco part numbers to make sure that you have the correct power adapter for your charger.

---

### Procedure

---

- Step 1** Plug the round barrel plug end of the cable into the desktop charger.
- Step 2** Plug the USB end of the cable into the power adapter and plug the power adapter into the electrical outlet.
- 

### Related Topics

[Cisco Accessory Part Numbers](#), on page 26

## Charge Your Phone with the Desktop Charger

You can tell when your phone is charging in the charger when the phone LED lights red and a message or icon displays on the phone screen. When the battery is fully charged, the LED turns green. Your phone can take up to 3 hours to recharge.

If your phone has a protective case, you don't need to remove the case before you charge the phone in the desktop charger. You adapt the charger to fit the phone.

When you put the phone into the charger, make sure that you align the charging pins on the bottom of the phone with the connector in the charger. When the phone is correctly placed in the charger, it is held in place with magnets. If the LED does not light, then the alignment is not correct.



---

**Caution** Do not charge the phone in a hazardous environment.

Do not charge the phone if it is wet.

---

### Procedure

---

- Step 1** (Optional) Adapt the charger for a phone in a case: Turn the charger so that the back is facing you, put three fingers about 3/4 of the way into the cup, press in, and lift. The cup should slide out.



**Note** You might need to use two hands to remove the cup the first time.

**Step 2** Place your phone in the charging slot with the screen facing towards you. If your phone is in a case, press the phone into the charging slot to ensure that the phone connects with the contacts.

Make sure that the LED on the phone lights red. If the LED does not light up, remove the phone and reinsert it into the charger.

If your phone is in a case, the phone and case will tilt out because of the case.

**Step 3** When you remove the phone from the charger, tilt the phone forward and lift it up to disconnect the connector from the magnets.



**Step 4** (Optional) Slide the charging cup into the charger. Make sure that the cup is flush with the front and top of the charger.



## Charge Your Spare Battery with the Desktop Charger

You can charge a spare battery in the desktop charger. The battery can take up to 3 hours to charge.



**Caution** Do not charge the battery in a hazardous environment.

When the battery is charging, the spare battery LED on the charger lights red. When the battery is charged, the spare battery LED on the charger lights green.

### Procedure

- Step 1** Hold the battery so that the Cisco label faces you, and the arrows on the battery point down.
- Step 2** Place the spare battery in the slot behind the phone cradle and press down firmly.

## Multichargers

You can charge up to six Cisco Wireless IP Phone 8821 and six spare batteries at the same time with the Cisco Wireless IP Phone 8821 Multi Charger. If your phone is in a protective case, you can charge it without removing the case. This charger has a label on the back to show the maximum voltage (4.35 V).

You can charge up to six Cisco Wireless IP Phone 8821-EX and six spare batteries at the same time with the Cisco Wireless IP Phone 8821-EX Multi Charger. If your phone is in a protective case, you can charge it without removing the case. The charger looks the same as the Cisco Wireless IP Phone 8821 Multi Charger except that it shows the graphic of the Cisco Wireless IP Phone 8821-EX and doesn't have the voltage label.

The following figure shows the multicharger. The phones are placed in the charging cups on the left and right, and the spare batteries are placed in the center.

**Figure 2: Cisco Wireless IP Phone 8821 and Cisco Wireless IP Phone 8821 Multi Charger**



You can place the multicharger on a work surface or mount it on a wall with the wall mount kit. You can also secure the multicharger with a standard laptop cable lock.



**Caution** The Cisco Wireless IP Phone 8821 Multi Charger can only charge the Cisco Wireless IP Phone 8821 and a spare battery for that phone. You can't charge the Cisco Wireless IP Phone 8821-EX or its spare batteries in the Cisco Wireless IP Phone 8821 Multi Charger.

In this document, the term *multicharger* refers to both chargers.

The LED on the phone shows the charging status. When the battery is charging, the LED lights red. When the battery is charged, the LED lights green.

The LED beside the spare battery shows the charging status. When the battery is charging, the LED lights red. When the battery is charged, the LED lights green.

Battery slot LEDs can take several minutes to indicate that the battery is fully charged. If you move a fully-charged battery to another slot, the LED might initially light red before it turns green.



**Caution** Do not use chargers in a Potentially Explosive Atmosphere.  
Do not charge the phone if it is wet.

警告：為避免電磁干擾，本產品不應安裝或使用於住宅環境。

#### Related Topics

[Multicharger Specifications](#), on page 31

[Cisco Accessory Part Numbers](#), on page 26

## Set Up the Multicharger

The power jack is on the right side of the multicharger.

### Procedure

- Step 1** Plug the jack end of the power cord into the multicharger.
- Step 2** Plug the other end of the power cord into the power adapter.
- Step 3** Plug the power adapter into the electrical outlet.
- Step 4** Place the multicharger on a stable work surface.

## Install the Multicharger Wall Mount Kit

The wall mount kit comes with the following components:

- bracket

- package with 5 screws and 5 self-tapping wall anchors

### Before you begin

You need the following tools:

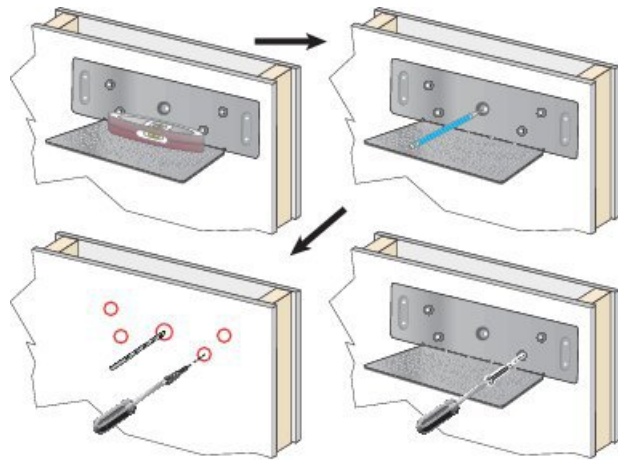
- Drill and a 0.25 inch drill bit
- Pencil
- Level
- Philips #1 and #2 screwdrivers

You need the power cable and power adapter.

### Procedure

**Step 1** Determine the location for the bracket. The bottom right corner of the bracket must be less than 50 inches (127 cm) from an electrical outlet.

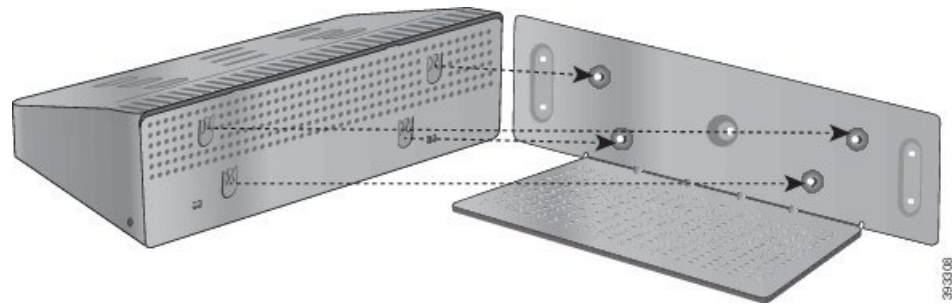
**Step 2** Mount the wall bracket.



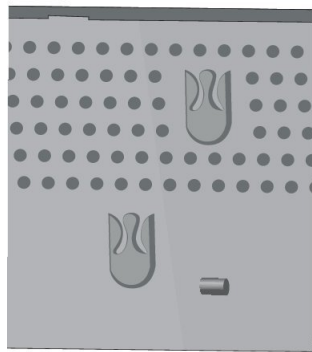
- Hold the bracket on the wall, as shown in the diagram.
- Use the level to ensure that the bracket is level and use a pencil to mark the screw holes.
- Install the anchors, using the drill and drill bit.
- Screw the bracket to the wall.

**Step 3** Locate the post holders in the multicharger.

**Step 4** Hold the multicharger so that the post holders are in front of the posts on the bracket, press the multicharger towards the wall, and then push the multicharger down so that the posts seat into the holder.



Here is a close-up of the post holder.



- Step 5** Plug the jack end of the power cord into the multicharger.
- Step 6** Plug the other end of the power cord into the power adapter.
- Step 7** Plug the power adapter into the electrical outlet.

## Charge Your Phone with the Multicharger

You can tell when your phone is charging in the multicharger when the phone LED lights red. When the battery is fully charged, the LED turns green. Your phone can take up to 3 hours to recharge.

If your phone has a protective case, you don't need to remove the case before you charge the phone in the multicharger. You adapt the multicharger to fit the phone.

When you put the phone into the multicharger, make sure that you align the charging pins on the bottom of the phone with the connector in the multicharger. If the LED does not light, then the alignment is not correct.



- Caution** Do not charge the phone in a hazardous environment.  
Do not charge the phone if it is wet.

### Procedure

---

- Step 1** (Optional) Adapt the charger for a phone in a case: Reach into the cup with three fingers, locate the slots on the inside of the cup, and use the slots to pull the cup out.



- Step 2** Place your phone in the empty charging slot. If your phone is in a case, press the phone into the charging slot to ensure that the phone connects with the contacts.
- Make sure that the LED on the phone lights red. If the LED does not light up, remove the phone and reinsert it into the multicharger.
- Step 3** (Optional) Slide the charging cup into the multicharger and press the cup into place so that the cup is flush with the top of the multicharger.
- 

## Charge Your Spare Battery with the Multicharger

You can charge a spare battery in the multicharger. The battery can take up to 3 hours to charge.



**Caution** Do not charge the battery in a hazardous environment.

---

When the battery is charging, the Battery LED beside the battery lights red. When the battery is charged, the Battery LED lights green.

### Procedure

---

Place the battery in an empty spare battery slot, aligning the battery contacts with the charger connector.

If the Battery LED does not light red, remove the battery and reinsert it into the battery slot.

---



## Carry Cases

You can put your phone into a carry case to make it easy to carry your wireless phone and to provide some protection for the phone. When your phone is in the case, you don't have to remove the case to charge the phone.

We have the following cases available:

- Cisco Wireless IP Phone 8821 and 8821-EX Leather Case
- Cisco Wireless IP Phone 8821 and 8821-EX Holster Case

You can attach a Cisco Wireless IP Phone 8821 and 8821-EX Belt Clip or a Cisco Wireless IP Phone 8821 and 8821-EX Pocket Clip to either case. The following picture shows the belt clip on the left and the pocket clip on the right.



When you buy a case, we supply both clips and you can also order replacement clips.



---

**Note** Cisco does not endorse, support, or test third party cases or covers for the 8821 Wireless Phones. Using your Cisco Wireless IP Phone 8821 with third party cases or covers may void your warranty.

---

### Cisco Wireless IP Phone 8821 and 8821-EX Leather Case

You can slide the phone into the leather case to protect the phone and then attach the case to the belt clip or pocket clip. The button on the back of the case attaches to the clip. The following pictures show the front and back of the leather case.



You can also clip a lanyard to the metal ring on the top of the leather case

When your phone is in the case, you don't have to remove the case to charge the phone.

#### **Cisco Wireless IP Phone 8821 and 8821-EX Holster Case**

You can press the phone into the holster case to protect the phone and then attach the case to the belt clip or pocket clip. The button on the back of the case attaches to the case to the clip. The following pictures show the front and back of the holster case.



When your phone is in the case, you don't have to remove the case to charge the phone.

#### **Related Topics**

[Cisco Accessory Part Numbers](#), on page 26

## Silicone Case

You can use the Cisco Wireless IP Phone 8821 Silicone Case to protect your wireless phone. The case fits over either wireless phone model.

Figure 3: Cisco Wireless IP Phone 8821 and Cisco Wireless IP Phone 8821 Silicone Case



The case has these benefits:

- Hypoallergenic
- Antimicrobial
- Resistant to wear from 15% alcohol, 75% alcohol, 2.5% hydrogen peroxide, mineral oil, soap, water, bleach, and dish soap.




---

**Note** Use the lowest-strength cleaning agent to prolong the life and look of the case.

---

- Reduces damage when the phone is dropped
- Covers more of the phone than the other cases.

The case comes with an optional belt clip that you can slide onto the case.

The case doesn't need to be removed to charge the battery in the desktop charger or multicharger. You remove the cup in the charger to place the phone and case into the charger.

#### Related Topics

[Desktop Chargers](#), on page 12

[Multichargers](#), on page 16

## Install the Cisco Wireless IP Phone 8821 Silicone Case

You put the phone into the case through the screen opening in the case. If you need to remove the case, reverse the steps below.

## Procedure

---

**Step 1** Slide the bottom of the phone into the screen opening until the phone is completely in the case.



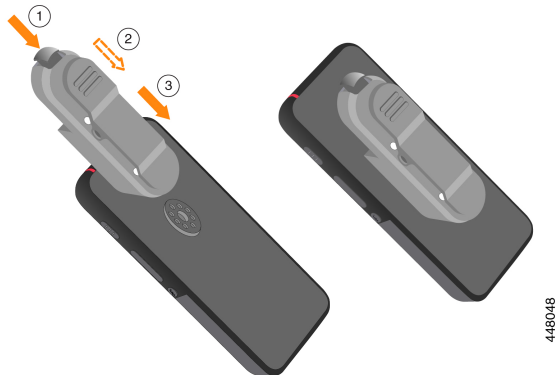
**Step 2** If the screen opening has rolled up, unroll it until it is flat.

**Step 3** One corner at a time, slide the case corner up to cover the phone.



**Step 4** If the screen opening has rolled up, unroll it until it is flat.

**Step 5** (Optional) If required, press the base of the belt clip in and slip the clip onto the post in the back of the case.



448048

## Clean the Silicone Case

### Procedure

- 
- Step 1** Remove the silicone case. You reverse steps in [Install the Cisco Wireless IP Phone 8821 Silicone Case, on page 23](#).
  - Step 2** Clean the case,
  - Step 3** Dry the case thoroughly. Don't put it back on the phone until it is completely dry.
  - Step 4** Put the case back on the phone. See [Install the Cisco Wireless IP Phone 8821 Silicone Case, on page 23](#).
- 

## Other Accessories

### Cisco Wireless IP Phone 8821 and 8821-EX Lanyards

You can attach the lanyard to the top of the wireless phone.

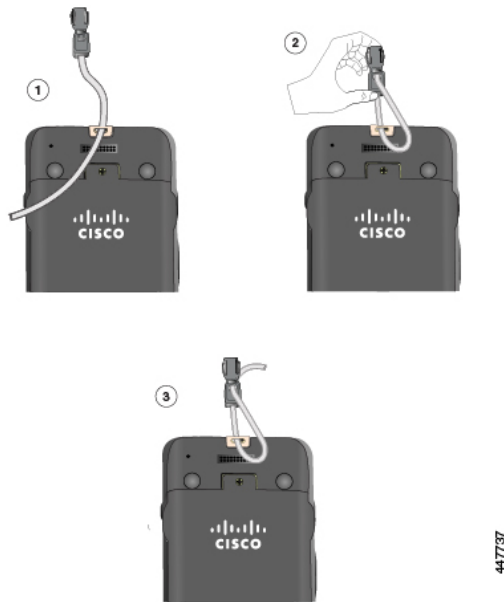
The following graphic shows the original lanyard.



To install the original lanyard, slip the loop of cord around the bar on the back of the phone and pass the lanyard through the loop.



The following graphic shows how to install the new lanyard.



To install the new lanyard, thread the lanyard through the slot in the phone and secure the end in the clip.

#### Cisco Wireless 8821 Battery Door and Cisco Wireless 8821-EX Battery Door

You can replace the battery door if the gasket on the door gets damaged. If the gasket is damaged, dirt and liquids can get into the battery compartment and cause damage to the phone. Failure to replace a broken gasket voids the phone warranty.



**Note** The battery doors are specific for the phone model. Be sure to order the correct version for your phone.

#### Related Topics

[Cisco Accessory Part Numbers](#), on page 26

## Cisco Accessory Part Numbers

You can buy accessories for your Cisco Wireless IP Phone 882x Series from your local dealer or corporate representative.

The following tables gives the part number for the Cisco accessories. For more information, see the product datasheets at <http://www.cisco.com/c/en/us/products/collaboration-endpoints/unified-ip-phone-8800-series/datasheet-listing.html>

**Table 2: Phone Spares and Accessories**

Product Name	Part Number
Cisco Wireless 8821 and 8821-EX Battery	CP-BATT-8821=
Cisco Wireless 8821 Battery Door	CP-BDOOR-8821=

Product Name	Part Number
Cisco Wireless 8821-EX Battery Door	CP-BDOOR-8821-EX=
Cisco Wireless IP Phone 8821 and 8821-EX Power Supply for North America	CP-PWR-8821-NA=
Cisco Wireless IP Phone 8821 and 8821-EX Power Supply for Argentina	CP-PWR-8821-AR=
Cisco Wireless IP Phone 8821 and 8821-EX Power Supply for Australia	CP-PWR-8821-AU=
Cisco Wireless IP Phone 8821 and 8821-EX Power Supply for Brazil	CP-PWR-8821-BZ=
Cisco Wireless IP Phone 8821 and 8821-EX Power Supply for Central Europe	CP-PWR-8821-CE=
Cisco Wireless IP Phone 8821 and 8821-EX Power Supply for India	CP-PWR-8821-IND=
Cisco Wireless IP Phone 8821 and 8821-EX Power Supply for Korea	CP-PWR-8821-KR=
Cisco Wireless IP Phone 8821 and 8821-EX Power Supply for Japan	CP-PWR-8821-JP=
Cisco Wireless IP Phone 8821 and 8821-EX Power Supply for Switzerland	CP-PWR-8821-SW=
Cisco Wireless IP Phone 8821 and 8821-EX Power Supply for UK	CP-PWR-8821-UK=
Cisco Wireless IP Phone 8821 and 8821-EX Holster Case with both belt and pocket clip	CP-HOLSTER-8821=
Cisco Wireless IP Phone 8821 and 8821-EX Leather Case with both belt and pocket clip	CP-LCASE-8821=
Cisco Wireless IP Phone 8821 and 8821-EX spare Pocket Clips set	CP-PCLIP-8821=
Cisco Wireless IP Phone 8821 and 8821-EX spare Belt Clips set	CP-BCLIP-8821=
Cisco Wireless IP Phone 8821 and 8821-EX Lanyard Set	CP-LANYARD=
Cisco Wireless IP Phone 8821 Silicone Case	CP-8821-SILCASE=

**Table 3: Desktop Chargers and Spares**

Name	Part Number
Cisco Wireless IP Phone 8821 Desktop Charger Only	CP-DSKCH-8821=
Cisco Wireless IP Phone 8821-EX Desktop Charger Only	CP-DSKCH-8821-EX
Cisco Wireless IP Phone 8821 Desktop Charger, includes power supply	CP-DSKCH-8821-BUN
Cisco Wireless IP Phone 8821-EX Desktop Charger bundle, with power cord and power supply	CP-DSKCH-8821EX-BN
Cisco Wireless IP Phone 8821 and 8821-EX Desktop Charger Power Supply for NA	CP-PWR-DC8821-NA=
Cisco Wireless IP Phone 8821 and 8821-EX Desktop Charger Power Supply for Argentina	CP-PWR-DC8821-AR=

Name	Part Number
Cisco Wireless IP Phone 8821 and 8821-EX Desktop Charger Power Supply Power Supply for Australia	CP-PWR-DC8821-AU=
Cisco Wireless IP Phone 8821 and 8821-EX Desktop Charger Power Supply Power Supply for Brazil	CP-PWR-DC8821-BZ=
Cisco Wireless IP Phone 8821 and 8821-EX Desktop Charger Power Supply Power Supply for Central Europe	CP-PWR-DC8821-CE=
Cisco Wireless IP Phone 8821 and 8821-EX Desktop Charger Power Supply Power Supply for India	CP-PWR-DC8821-IND=
Cisco Wireless IP Phone 8821 and 8821-EX Desktop Charger Power Supply Power Supply for Korea	CP-PWR-DC8821-KR=
Cisco Wireless IP Phone 8821 and 8821-EX Desktop Charger Power Supply Power Supply for Japan	CP-PWR-DC8821-JP=
Cisco Wireless IP Phone 8821 and 8821-EX Desktop Charger Power Supply Power Supply for Switzerland	CP-PWR-DC8821-SW=
Cisco Wireless IP Phone 8821 and 8821-EX Desktop Charger Power Supply Power Supply for United Kingdom	CP-PWR-DC8821-UK=

Table 4: Multichargers and Spares

Name	Part Number
Cisco Wireless IP Phone 8821 Multi Charger bundle, with power cube, power adapter and country cord	CP-MCHGR-8821-BUN
Cisco Wireless IP Phone 8821-EX Multi-Charger bundle, with power cube, power adapter and country cord	CP-MCHGR-8821EX-BN
Cisco Wireless IP Phone 8821 Multi Charger Only	CP-MCHGR-8821=
Cisco 8821-EX Multi-Charger Only	CP-MCHGR-8821-EX=
Cisco Wireless IP Phone 8821 and 8821-EX Multi Charger Wall Mount and Kit	CP-MCHGR-8821-WMK=
All countries power cube	CP-PWR-CUBE-6=
Power Cord, NA	CP-PWR-CORD-NA=
Power Cord, Argentina	CP-PWR-CORD-AR=
Power Cord, Australia	CP-PWR-CORD-AU=
Power Cord, Brazil	CP-PWR-CORD-BZ=
Power Cord, Central Europe	CP-PWR-CORD-CE=
Power Cord, India	CP-PWR-CORD-IN=



Name	Part Number
Power Cord, Korea	CP-PWR-CORD-KR=
Power Cord, Japan	CP-PWR-CORD-JP=
Power Cord, Asia Pacific	CP-PWR-CORD-AP=
Power Cord, South Africa	CP-PWR-CORD-SA=
Power Cord, Switzerland	CP-PWR-CORD-SW=
Power Cord, UK	CP-PWR-CORD-UK=

## Desktop Charger Specifications

*Table 5: Physical Specifications*

Item	Description
Dimensions (H x W x D)	3.0 x 7.3 x 4.0 in. (76 x 185 x 102 mm)
Weight	<ul style="list-style-type: none"> <li>• Desktop charger: 1.41 pounds (641 g)</li> <li>• Power adapter: 0.08 pounds (38 g)</li> <li>• Total weight: 1.49 pounds (679 g)</li> </ul>
Power supply	<ul style="list-style-type: none"> <li>• Input: 100-240V, 0.2A, 50-60 Hz</li> <li>• Output: 5V, 2.0A</li> <li>• AC adapters (by geographical region)</li> </ul>
Power consumption	10 watts
Operating temperature	32 to 104°F (0 to 40°C)
Storage temperature	-22 to 140°F (-30 to 60°C)
Relative humidity	10 to 95% (noncondensing)
Drop specification	Drop height: 750 mm (29.5 inch)
Vibration	0.41 Grms from 3 to 500 Hz with spectral break points of 0.0005 G <sub>2</sub> / Hz at 10 Hz and 200 Hz and 5 dB/octave roll off at each end
Thermal shock	-22°F (-30°C) 24 hours; 158°F (70°C) 24 hours
Charging time	<ul style="list-style-type: none"> <li>• Battery only: 2–4 hours</li> <li>• Phone: set by the phone</li> </ul>

**Table 6: Safety and Compliance**

Item	Description
Safety	<ul style="list-style-type: none"> <li>• UL 60950-1</li> <li>• CSA C22.2 No. 60950-1</li> <li>• EN 60950-1</li> <li>• IEC 60950-1</li> <li>• AS/NZS 60950.1</li> </ul>
Electromagnetic compatibility (EMC) and electromagnetic interference (EMI)	<ul style="list-style-type: none"> <li>• CFR 47 Part 15 Class A</li> <li>• ICES-003 Class A</li> <li>• EN 55022 Class A</li> <li>• CISPR 22 Class A</li> <li>• VCCI Class A</li> <li>• AS/NZS CISPR22</li> <li>• CSPR 24</li> <li>• EN 55024</li> <li>• EN 50082-1</li> <li>• EN 61000-6-1</li> <li>• EN 61000-3-2</li> <li>• EN 61000-3-3</li> <li>• EN 61000-4-2</li> <li>• EN 61000-4-3</li> <li>• EN 61000-4-4</li> <li>• EN 61000-4-5</li> <li>• EN 61000-4-6</li> <li>• EN 61000-4-11</li> </ul>

# Multicharger Specifications

**Table 7: Physical Specifications**

Item	Description
Dimensions (H x W x D)	14.17 x 9.06 x 4.14 in (360 x 230 x 105 mm)
Weight	<ul style="list-style-type: none"> <li>• Multi-charger: 5.65 lb (2.57 kg)</li> <li>• Power supply: 0.77 lb (0.35 kg)</li> <li>• Mounting bracket: 1.47 lb (0.67 kg)</li> </ul>
Power supply	<ul style="list-style-type: none"> <li>• Input: 100-240VAC, 1.2A, 50–60 Hz</li> <li>• Output: 19V, 4.74A</li> <li>• AC adapters (by geographical region)</li> </ul>
Power consumption	90 watts
Operating temperature	32 to 104°F (0 to 40°C)
Storage temperature	-22 to 140°F (-30 to 60°C)
Relative humidity	10 to 95% (noncondensing)
Drop specification	Drop height: 750 mm (29.5 inch)
Vibration	0.41 Grms from 3 to 500 Hz with spectral break points of 0.0005 G <sub>2</sub> / Hz at 10 Hz and 200 Hz and 5 dB/octave roll off at each end
Thermal shock	-22°F (-30°C) 24 hours; 158°F (70°C) 24 hours
Charging time	<ul style="list-style-type: none"> <li>• Battery only: 2–4 hours</li> <li>• Phone: set by the phone</li> </ul>

**Table 8: Safety and Compliance**

Item	Description
Safety	<ul style="list-style-type: none"> <li>• IEC 60950-1</li> <li>• EN 60950-1</li> <li>• UL 60950-1</li> <li>• CSA C22.2 No. 60950-1</li> <li>• AS/NZS 60950.1</li> </ul>

Item	Description
Electromagnetic compatibility (EMC) and electromagnetic interference (EMI)	<ul style="list-style-type: none"><li>• FCC Parer 15 (CFR 47) Class A</li><li>• ICES-003 Class A</li><li>• EN 55022 Class A</li><li>• CISPR 22 Class A</li><li>• AS/NZS CISPR22</li><li>• VCCI Class A</li><li>• CSPR 24</li><li>• EN 55024</li><li>• EN 61000-3-2</li><li>• EN 61000-3-3</li><li>• EN 61000-4-2</li><li>• EN 61000-4-3</li><li>• EN 61000-4-4</li><li>• EN 61000-4-5</li><li>• EN 61000-4-6</li><li>• EN 61000-4-8</li><li>• EN 61000-4-11</li><li>• EN 61000-6-1</li><li>• EN 61000-63</li><li>• EN 60601-1-2</li></ul>



## CHAPTER 3

# Third-Party Accessories

---

- [Third-Party Accessories Overview, on page 33](#)
- [Headsets, on page 33](#)

## Third-Party Accessories Overview

Accessories for the wireless phones are available from third parties.



---

**Note** Cisco does not test third-party accessories. Cisco recommends that you test them in your environment before providing them to users.

Cisco does not endorse, support, or test third party cases or covers for the Cisco Wireless IP Phone 882x. Using your Cisco Wireless IP Phone 8821 with third party cases or covers may void your warranty.

---

## Headsets

The wireless phone supports the use of third-party wired and Bluetooth wireless headsets.

For wired headsets, the phone requires a headset or ear bud with a 3.5 mm, 3-band, 4-conductor plug.

### Related Topics

[Important Headset Safety Information, on page 3](#)

## Bluetooth Wireless Headsets

Using Bluetooth wireless headsets increases battery power consumption on your phone and results in reduced talk time.

For a Bluetooth wireless headset to work, it does not need to be within direct line-of-sight of the phone, but some barriers, such as walls or doors, and interference from other electronic devices, can affect the connection.

## Headset Choices

The audio portion of a headset must sound good to you and the person you are speaking to. Sound is subjective and we cannot guarantee the performance of any headsets. Some of the headsets on the sites listed below have been reported to perform well on wireless IP Phones.

For information about headsets, go to the following URLs:

<http://www.plantronics.com>

<http://www.jabra.com>

<http://en-us.sennheiser.com>



---

**Note** We recommend that you test your headsets in your own environment to determine suitable performance.

---