

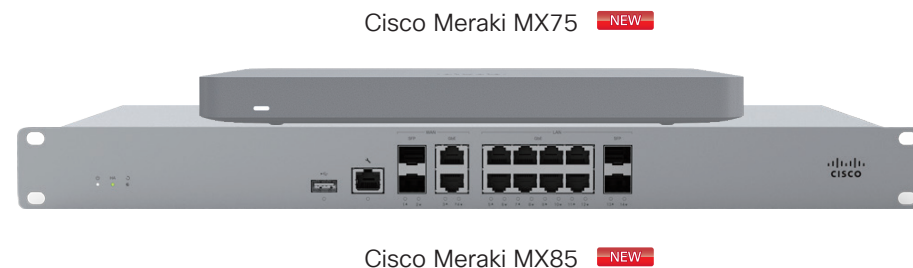
Cisco Meraki MX Cloud Managed Security & SD-WAN Appliances

- Overview**
- Positioning Map
- Platform Spec
- Licenses & Accessories
- Why Meraki MX?

Protect and Securely Connect What Matters Most, Regardless of Location

The Cisco Meraki MX Security & SD-WAN Appliances are multifunctional security and SD-WAN enterprise appliances with a comprehensive set of capabilities to address multiple use cases—from an all-in-one device. Organizations of all sizes and across all industries rely on the MX to deliver secure connectivity to hub locations or multi-cloud environments, as well as application quality of experience (QoE), through advanced analytics with machine learning.

Cisco Meraki MX has a comprehensive suite of secure network and assurance capabilities, eliminating the need for multiple appliances. These capabilities include application-based fire-walling, content filtering, web search filtering, SNORT-based intrusion detection and prevention, Cisco Advanced Malware Protection (AMP), site-to-site Auto VPN, client VPN, WAN and cellular failover, dynamic path selection, web application health, VoIP health, and more.



Highlights

Cisco Meraki MX is an all-in-one solution for simple, secure, and optimized access to apps and resources from anywhere.



Identity-based Firewall

Automatically assign firewall and traffic shaping rules, VLAN tags, and bandwidth limits to **enforce the right policies for each class of users**.



Intrusion Prevention

Protect critical network resources from the latest security threats and vulnerabilities.



Auto VPN

Securely connect branch locations using mesh or hub-and-spoke topologies. Provide simple, **clientless remote access VPN**.



Content Filtering

Block undesirable web content across 80+ categories, and leverage cloud lookups to filter billions of URLs.



Advanced Malware Protection

Protect your network against malware using the latest threat intelligence, and identify previously unknown malicious files with retrospective detection.



High Availability & Failover

Provide device and connection integrity through multiple uplinks, warm spare failover, and self-healing VPN.



Application Visibility & Control

Identify which applications are being used, and then **prioritize critical apps** while **limiting recreational apps**.



Centralized Management

Seamlessly manage campus-wide Wi-Fi deployments and distributed multi-site networks **from a single pane-of-glass**.

Cisco Meraki MX Cloud Managed Security & SD-WAN Appliances

Overview

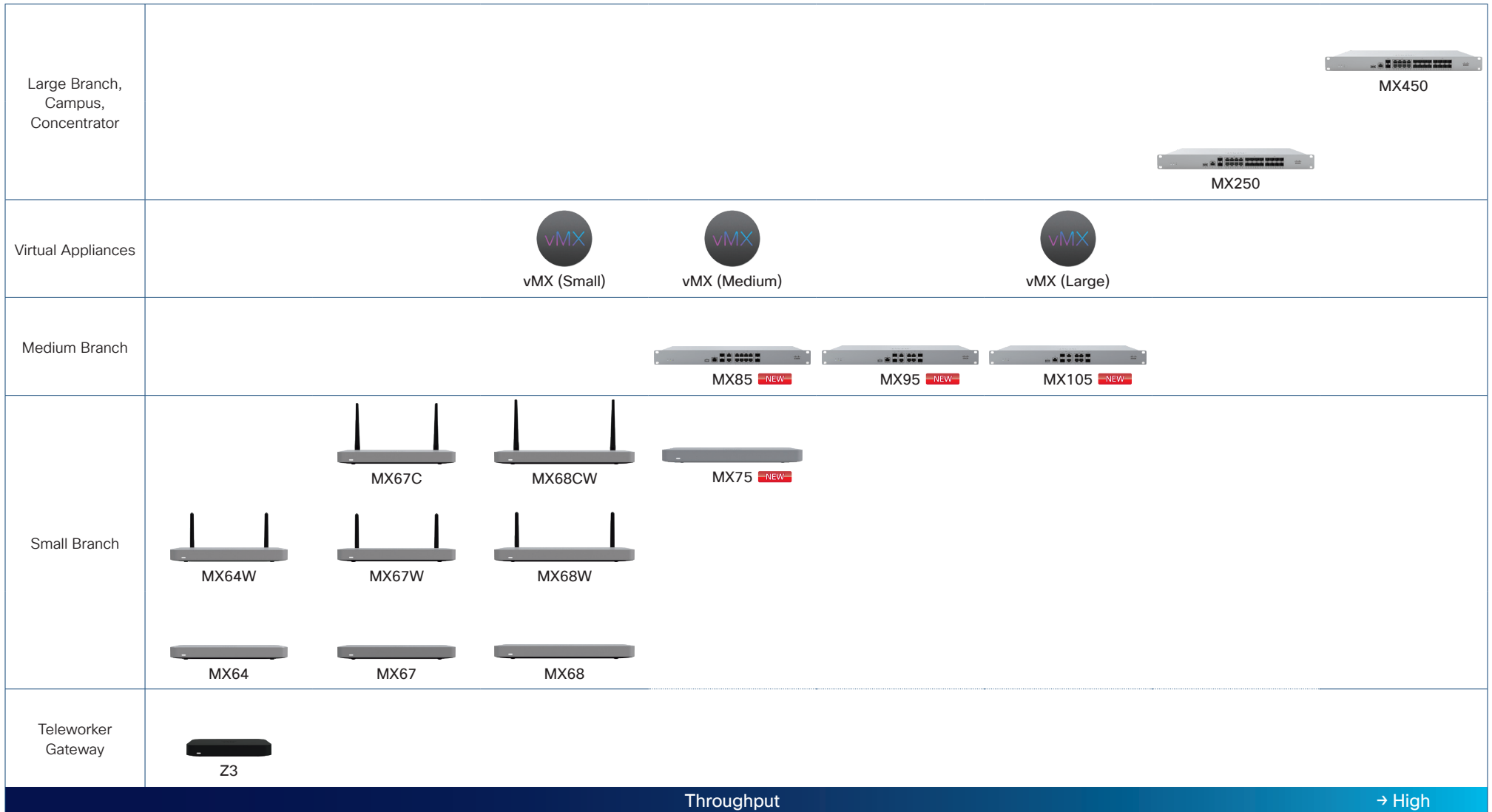
Positioning Map

Platform Spec

Licenses & Accessories

Why Meraki MX?

Cisco Meraki MX Security & SD-WAN Appliances Positioning Map



Cisco Meraki MX Cloud Managed Security & SD-WAN Appliances

Overview

Positioning Map

Platform Spec

Licenses & Accessories

Why Meraki MX?

Cisco Meraki MX Security & SD-WAN Appliances (for SMB)

Product SKU	Recommended Clients	Throughput			Concurrent VPN Tunnels	WAN Ports						WAN/LAN Port	LAN Ports			WLAN	Power Supply ^{*2}	Rack Mount
		Stateful Firewall	Advanced Security ^{*1}	VPN		1GE RJ45	1GE PoE+ RJ45	1GE SFP	Built-in Cat 3 LTE	Built-in Cat 6 LTE	USB Cellular Modem	1GE RJ45	1GE RJ45	1GE PoE+ RJ45	1GE SFP	11ac AP		
MX64-HW	50	250 Mbps	200 Mbps	100 Mbps	50	1					✓ ^{*3}	1	4				External	^{*4}
MX64W-HW	50	250 Mbps	200 Mbps	100 Mbps	50	1					✓ ^{*3}	1	4			✓	External	^{*4}
MX67-HW	50	450 Mbps	300 Mbps	200 Mbps	50	1					✓ ^{*3}	1	4				External	^{*4}
MX67W-HW	50	450 Mbps	300 Mbps	200 Mbps	50	1					✓ ^{*3}	1	4			✓	External	^{*4}
MX67C-HW-WW	50	450 Mbps	300 Mbps	200 Mbps	50	1			✓		✓ ^{*3}	1	4				External	^{*4}
MX68-HW	50	450 Mbps	300 Mbps	200 Mbps	50	2					✓ ^{*3}		8	2			External	^{*4}
MX68W-HW	50	450 Mbps	300 Mbps	200 Mbps	50	2					✓ ^{*3}		8	2		✓	External	^{*4}
MX68CW-HW-WW	50	450 Mbps	300 Mbps	200 Mbps	50	2			✓		✓ ^{*3}		8	2		✓	External	^{*4}
MX75-HW NEW	200	1 Gbps	750 Mbps	500 Mbps	75	2		1			✓ ^{*3}		8	2			External	^{*4}
MX85-HW NEW	250	1 Gbps	750 Mbps	500 Mbps	200	1	1	2			✓ ^{*3}		8		2		Internal	1 RU
vMX (Small) NEW				200 Mbps	50													
vMX (Medium) NEW				500 Mbps	250													

*1 Advanced Security License or Secure SD-WAN Plus License is required. *2 Power cord is sold separately. *3 Sold separately. *4 Desktop or Wall mountable with included mount hardware.

Cisco Meraki Z Cloud Managed Teleworker Gateway

Product SKU	Recommended Clients	Throughput			Concurrent VPN Tunnels	WAN Ports						WAN/LAN Port	LAN Ports			WLAN	Power Supply ^{*1}	Rack Mount
		Stateful Firewall	Advanced Security	VPN		1GE RJ45	1GE PoE+ RJ45	1GE SFP	Built-in Cat 3 LTE	Built-in Cat 6 LTE	USB Cellular Modem	1GE RJ45	1GE RJ45	1GE PoE+ RJ45	1GE SFP	11ac AP		
Z3-HW	5	100 Mbps		50 Mbps		1					✓ ^{*2}		3	1		✓	External	^{*3}
Z3C-HW-WW	5	100 Mbps		50 Mbps		1			✓		✓ ^{*2}		3	1		✓	External	^{*3}

*1 Power cord is sold separately. *2 Sold separately. *3 Desktop or Wall mountable with included mount hardware.

Cisco Meraki MX Cloud Managed Security & SD-WAN Appliances

Overview

Positioning Map

Platform Spec

Licenses & Accessories

Why Meraki MX?

Cisco Meraki MX Licensing

Cisco Meraki MX has licenses on a per-model basis, so every Meraki MX model has a corresponding license. Please note that these licenses are non-transferrable between appliance models. For example, a Meraki MX64 will not be covered by a Meraki MX84 license; it will require a Meraki MX64 license.

Cisco Meraki MX has multiple license editions: **Enterprise**, **Advanced Security**, and **Secure SD-WAN Plus**. Please note that the Meraki MX licensing edition is uniform across the Organization. For example, you can have all 25 appliances using Enterprise edition or Advanced Security edition, but you cannot have 20 appliances using one edition and 5 using the other edition. If you wish to use Enterprise edition for some appliances and Advanced Security edition for other appliances, you need to create two Organizations, one for your appliances with the Enterprise edition, and another for the appliances with the Advanced Security edition.

Cisco Meraki MX License Comparison

Feature	Enterprise	Advanced Security	Secure SD-WAN Plus	Meraki Insight
Centralized Management	✓	✓	✓	
Zero-Touch Firmware Updates	✓	✓	✓	
True Zero-Touch Provisioning	✓	✓	✓	
24x7 Enterprise Support	✓	✓	✓	
Open APIs	✓	✓	✓	
Automatic WAN Failover	✓	✓	✓	
Sub-Second Site-to-Site VPN Failover	✓	✓	✓	
Sub-Second Dynamic Path Selection	✓	✓	✓	
VLAN to VLAN Routing	✓	✓	✓	
Advanced Routing	✓	✓	✓	
Uplink Load Balancing/Failover	✓	✓	✓	
3G/4G Cellular Failover	✓	✓	✓	
Traffic Shaping/Prioritization	✓	✓	✓	
Site-to-Site VPN	✓	✓	✓	
Client VPN	✓	✓	✓	
MPLS to VPN Failover	✓	✓	✓	
Splash Pages	✓	✓	✓	
Configuration Templates	✓	✓	✓	
Group Policies	✓	✓	✓	
Client Connectivity Alerts	✓	✓	✓	

Feature	Enterprise	Advanced Security	Secure SD-WAN Plus	Meraki Insight
Stateful Firewall	✓	✓	✓	
Geography-based Firewall Rules		✓	✓	
Intrusion Detection & Prevention		✓	✓	
Content Filtering		✓	✓	
YouTube Content Restriction		✓	✓	
Web Search Filtering		✓	✓	
Cisco Advanced Malware Protection (AMP)		✓	✓	
Umbrella DNS Integration**		✓	✓	
Threat Grid Integration**		✓	✓	
Essential SD-WAN	✓	✓	✓	
Source-Based Routing	✓	✓	✓	
Local Breakout (IP-based)	✓	✓	✓	
Smart Breakout			✓	
SD-Internet			✓	
Web App Health Analytics			✓	✓
WAN Health Analytics			✓	✓
VoIP Health Analytics			✓	✓

*1 Cisco Umbrella License is required. *2 Cisco Threat Grid License is required.

Cisco Meraki MX Cloud Managed Security & SD-WAN Appliances

[Overview](#)
[Positioning Map](#)
[Platform Spec](#)
[Licenses & Accessories](#)
[Why Meraki MX?](#)

Cisco Meraki MX Enterprise Licenses

Product SKU					Compatible Model
1-Year	3-Years	5-Years	7-Years	10-Years	
LIC-MX64-ENT-1YR	LIC-MX64-ENT-3YR	LIC-MX64-ENT-5YR	LIC-MX64-ENT-7YR	LIC-MX64-ENT-10YR	MX64
LIC-MX64W-ENT-1YR	LIC-MX64W-ENT-3YR	LIC-MX64W-ENT-5YR	LIC-MX64W-ENT-7YR	LIC-MX64W-ENT-10YR	MX64W
LIC-MX67-ENT-1YR	LIC-MX67-ENT-3YR	LIC-MX67-ENT-5YR	LIC-MX67-ENT-7YR	LIC-MX67-ENT-10YR	MX67
LIC-MX67W-ENT-1YR	LIC-MX67W-ENT-3YR	LIC-MX67W-ENT-5YR	LIC-MX67W-ENT-7YR	LIC-MX67W-ENT-10YR	MX67W
LIC-MX67C-ENT-1YR	LIC-MX67C-ENT-3YR	LIC-MX67C-ENT-5YR	LIC-MX67C-ENT-7YR	LIC-MX67C-ENT-10YR	MX67C
LIC-MX68-ENT-1YR	LIC-MX68-ENT-3YR	LIC-MX68-ENT-5YR	LIC-MX68-ENT-7YR	LIC-MX68-ENT-10YR	MX68
LIC-MX68W-ENT-1YR	LIC-MX68W-ENT-3YR	LIC-MX68W-ENT-5YR	LIC-MX68W-ENT-7YR	LIC-MX68W-ENT-10YR	MX68W
LIC-MX68CW-ENT-1YR	LIC-MX68CW-ENT-3YR	LIC-MX68CW-ENT-5YR	LIC-MX68CW-ENT-7YR	LIC-MX68CW-ENT-10YR	MX68CW
LIC-MX75-ENT-1Y	LIC-MX75-ENT-3Y	LIC-MX75-ENT-5Y	LIC-MX75-ENT-7Y	LIC-MX75-ENT-10Y	MX75
LIC-MX85-ENT-1Y	LIC-MX85-ENT-3Y	LIC-MX85-ENT-5Y	LIC-MX85-ENT-7Y	LIC-MX85-ENT-10Y	MX85
LIC-VMX-S-ENT-1Y	LIC-VMX-S-ENT-3Y	LIC-VMX-S-ENT-5Y			vMX (Small)
LIC-VMX-M-ENT-1Y	LIC-VMX-M-ENT-3Y	LIC-VMX-M-ENT-5Y			vMX (Medium)

Cisco Meraki MX Advanced Security Licenses

Product SKU					Compatible Model
1-Year	3-Years	5-Years	7-Years	10-Years	
LIC-MX64-SEC-1YR	LIC-MX64-SEC-3YR	LIC-MX64-SEC-5YR	LIC-MX64-SEC-7YR	LIC-MX64-SEC-10YR	MX64
LIC-MX64W-SEC-1YR	LIC-MX64W-SEC-3YR	LIC-MX64W-SEC-5YR	LIC-MX64W-SEC-7YR	LIC-MX64W-SEC-10YR	MX64W
LIC-MX67-SEC-1YR	LIC-MX67-SEC-3YR	LIC-MX67-SEC-5YR	LIC-MX67-SEC-7YR	LIC-MX67-SEC-10YR	MX67
LIC-MX67W-SEC-1YR	LIC-MX67W-SEC-3YR	LIC-MX67W-SEC-5YR	LIC-MX67W-SEC-7YR	LIC-MX67W-SEC-10YR	MX67W
LIC-MX67C-SEC-1YR	LIC-MX67C-SEC-3YR	LIC-MX67C-SEC-5YR	LIC-MX67C-SEC-7YR	LIC-MX67C-SEC-10YR	MX67C
LIC-MX68-SEC-1YR	LIC-MX68-SEC-3YR	LIC-MX68-SEC-5YR	LIC-MX68-SEC-7YR	LIC-MX68-SEC-10YR	MX68
LIC-MX68W-SEC-1YR	LIC-MX68W-SEC-3YR	LIC-MX68W-SEC-5YR	LIC-MX68W-SEC-7YR	LIC-MX68W-SEC-10YR	MX68W
LIC-MX68CW-SEC-1YR	LIC-MX68CW-SEC-3YR	LIC-MX68CW-SEC-5YR	LIC-MX68CW-SEC-7YR	LIC-MX68CW-SEC-10YR	MX68CW
LIC-MX75-SEC-1Y	LIC-MX75-SEC-3Y	LIC-MX75-SEC-5Y	LIC-MX75-SEC-7Y	LIC-MX75-SEC-10Y	MX75
LIC-MX85-SEC-1Y	LIC-MX85-SEC-3Y	LIC-MX85-SEC-5Y	LIC-MX85-SEC-7Y	LIC-MX85-SEC-10Y	MX85

Cisco Meraki MX Cloud Managed Security & SD-WAN Appliances

[Overview](#)
[Positioning Map](#)
[Platform Spec](#)
[Licenses & Accessories](#)
[Why Meraki MX?](#)

Cisco Meraki MX Advanced Security Licenses

Product SKU					Compatible Model
1-Year	3-Years	5-Years	7-Years	10-Years	
LIC-MX64-SDW-1Y	LIC-MX64-SDW-3Y	LIC-MX64-SDW-5Y	LIC-MX64-SDW-7Y	LIC-MX64-SDW-10Y	MX64
LIC-MX64W-SDW-1Y	LIC-MX64W-SDW-3Y	LIC-MX64W-SDW-5Y	LIC-MX64W-SDW-7Y	LIC-MX64W-SDW-10Y	MX64W
LIC-MX67-SDW-1Y	LIC-MX67-SDW-3Y	LIC-MX67-SDW-5Y	LIC-MX67-SDW-7Y	LIC-MX67-SDW-10Y	MX67
LIC-MX67W-SDW-1Y	LIC-MX67W-SDW-3Y	LIC-MX67W-SDW-5Y	LIC-MX67W-SDW-7Y	LIC-MX67W-SDW-10Y	MX67W
LIC-MX67C-SDW-1Y	LIC-MX67C-SDW-3Y	LIC-MX67C-SDW-5Y	LIC-MX67C-SDW-7Y	LIC-MX67C-SDW-10Y	MX67C
LIC-MX68-SDW-1Y	LIC-MX68-SDW-3Y	LIC-MX68-SDW-5Y	LIC-MX68-SDW-7Y	LIC-MX68-SDW-10Y	MX68
LIC-MX68W-SDW-1Y	LIC-MX68W-SDW-3Y	LIC-MX68W-SDW-5Y	LIC-MX68W-SDW-7Y	LIC-MX68W-SDW-10Y	MX68W
LIC-MX68CW-SDW-1Y	LIC-MX68CW-SDW-3Y	LIC-MX68CW-SDW-5Y	LIC-MX68CW-SDW-7Y	LIC-MX68CW-SDW-10Y	MX68CW
LIC-MX75-SDW-1Y	LIC-MX75-SDW-3Y	LIC-MX75-SDW-5Y	LIC-MX75-SDW-7Y	LIC-MX75-SDW-10Y	MX75
LIC-MX85-SDW-1Y	LIC-MX85-SDW-3Y	LIC-MX85-SDW-5Y	LIC-MX85-SDW-7Y	LIC-MX85-SDW-10Y	MX85

Cisco Meraki Z Enterprise Licenses

Product SKU					Compatible Model
1-Year	3-Years	5-Years	7-Years	10-Years	
LIC-Z3-ENT-1YR	LIC-Z3-ENT-3YR	LIC-Z3-ENT-5YR	LIC-Z3-ENT-7YR	LIC-Z3-ENT-10YR	Z3
LIC-Z3C-ENT-1YR	LIC-Z3C-ENT-3YR	LIC-Z3C-ENT-5YR	LIC-Z3C-ENT-7YR	LIC-Z3C-ENT-10YR	Z3C

Cisco Meraki Insight Licenses

Product SKU					Compatible Model
1-Year	3-Years	5-Years	7-Years	10-Years	
LIC-MI-S-1YR	LIC-MI-S-3YR	LIC-MI-S-5YR	LIC-MI-S-7YR	LIC-MI-S-10YR	MX6x
LIC-MI-M-1YR	LIC-MI-M-3YR	LIC-MI-M-5YR	LIC-MI-M-7YR	LIC-MI-M-10YR	MX75, MX85
LIC-MI-XS-1YR	LIC-MI-XS-3YR	LIC-MI-XS-5YR	LIC-MI-XS-7YR	LIC-MI-XS-10YR	Z3, Z3C

Cisco Meraki MX Cloud Managed Security & SD-WAN Appliances

Overview

Positioning Map

Platform Spec

Licenses & Accessories

Why Meraki MX?

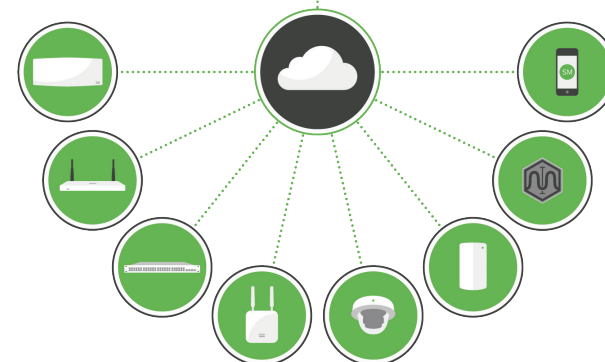
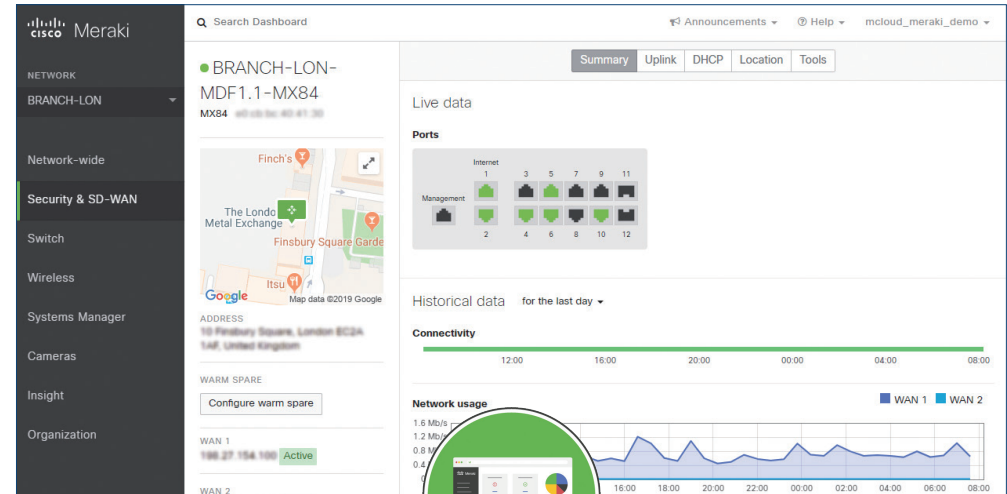
Cloud Management Architecture

Cisco Meraki's architecture provides feature-rich network management without on-site management appliances or Wi-Fi controllers.

Every Meraki device — including access points, switches, security & SD-WAN appliances, cellular gateways, smart cameras, and sensors— connects over the Internet to Meraki's datacenters, which run Meraki's cloud management platform.

These connections, secured via SSL, utilize a patented protocol that provides real-time visibility and control, yet uses minimal bandwidth overhead (typically 1 Kbps or less.)

In place of traditional command-line based network configuration, Meraki provides a rich web-based dashboard, providing visibility and control over up to tens of thousands of Meraki devices, anywhere in the world. Tools, designed to scale to large and distributed networks, make policy changes, firmware updates, deploying new branches, etc. simple and expedient, regardless of size or location. Meraki's real-time protocols combine the immediacy of on-premise management applications with the simplicity and centralized control of a cloud application.



Cisco Meraki MX Cloud Managed Security & SD-WAN Appliances



Overview

Positioning Map

Platform Spec

Licenses & Accessories

Why Meraki MX?

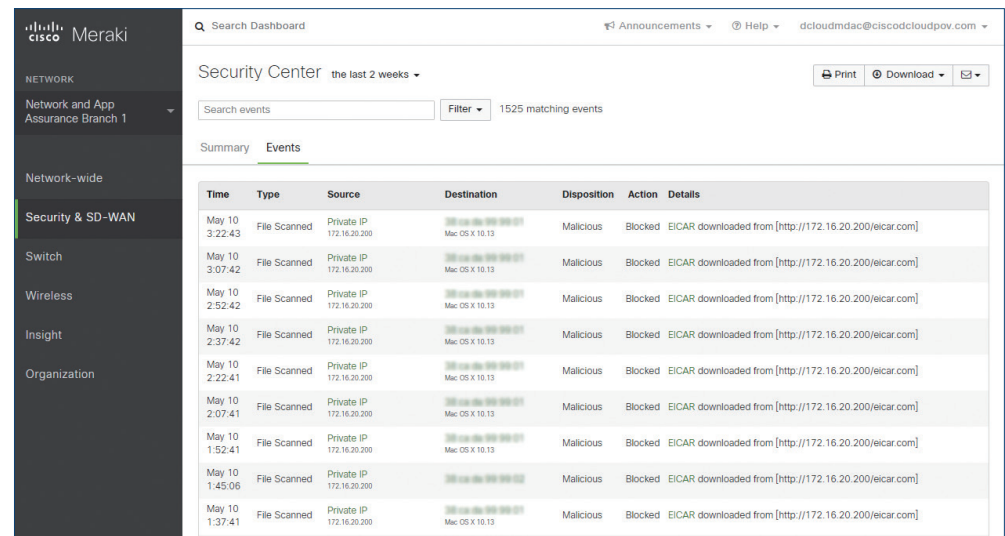
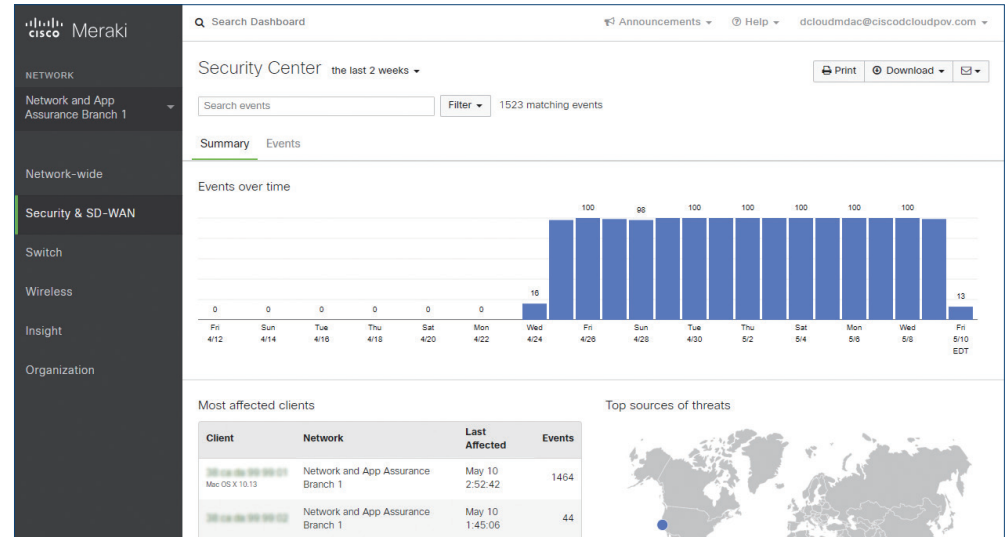
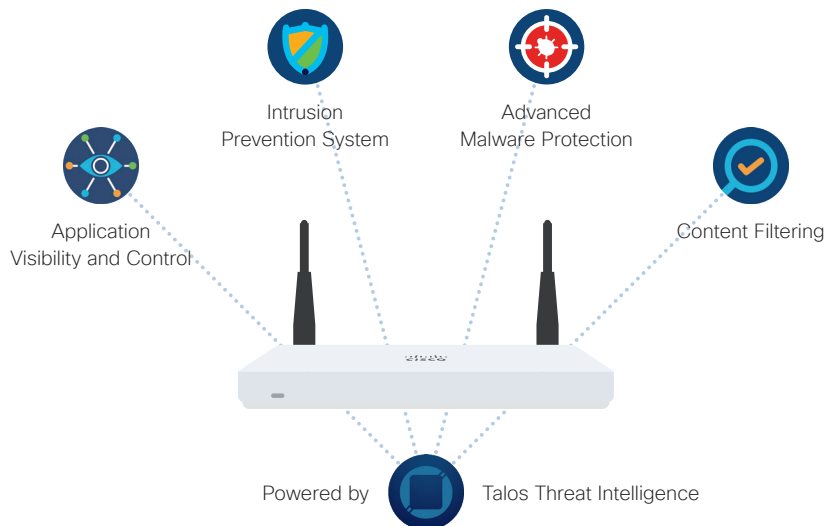
Ironclad Security

The Cisco Meraki MX has an extensive suite of security features including [IDS/IPS](#), [content filtering](#), [web search filtering](#), [geo-IP based firewalling](#), [IPsec VPN connectivity](#), and [Cisco Advanced Malware Protection \(AMP\)](#), while providing the performance required for modern, bandwidth-intensive networks.

Layer 7 fingerprinting technology lets administrators identify unwanted content and applications and prevent recreational apps like BitTorrent from wasting precious bandwidth.

The integrated Cisco Snort engine delivers superior intrusion prevention coverage, a key requirement for PCI 3.2 compliance. Cisco Meraki MX also uses the Webroot BrightCloud URL categorization database for CIPA/IWF compliant content-filtering, Cisco AMP engine for anti-malware, AMP Threat Grid Cloud, and MaxMind for geo-IP based security rules.

Best of all, these industry-leading Layer 7 security engines and signatures are [always kept up-to-date via the cloud](#), simplifying network security management and providing peace of mind to IT administrators.



Cisco Meraki MX Cloud Managed Security & SD-WAN Appliances

Overview

Positioning Map

Platform Spec

Licenses & Accessories

Why Meraki MX?

Cisco Software-Defined WAN (SD-WAN)

Cisco SD-WAN (powered by Meraki) is ideal for lean IT environments in which full-stack management of WAN, LAN, and security is valued, along with simple management, orchestration, and automation, or where Meraki is the predominant architecture.

Cisco Meraki MX is equipped with SD-WAN capabilities that enable administrators to use available bandwidth more efficiently and ensure the highest possible level of performance for critical applications without sacrificing security or data privacy.

The following features can lower your operational costs and improve resource usage:

- Dual-Active VPN Uplinks

In addition to supporting dual WAN uplinks and automatic VPN failover, Cisco Meraki MX also has the ability to build multiple VPN tunnels that are active simultaneously on both uplinks, whether they are Internet or MPLS connections. Traffic can then be load-balanced across these tunnels to make optimal use of available bandwidth.

- Policy-based Routing (PbR)

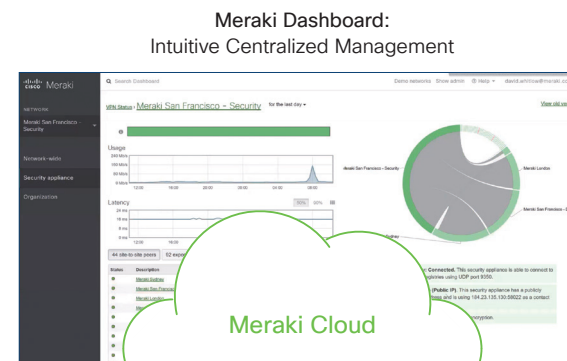
PbR functionality allows administrators to assign traffic to a particular VPN path based on criteria such as traffic protocol, source, destination, or application.

- Dynamic Path Selection

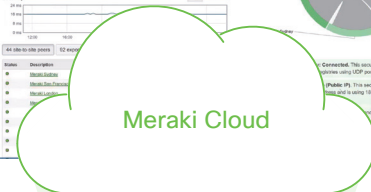
Dynamic path selection allows administrators to set performance thresholds for different types of traffic, in order to ensure that critical applications and data transfers always use the best path based on the loss, latency, and jitter over the available VPN tunnels.

- Meraki Insight WAN Health

The WAN Health feature is specifically designed to monitor ISP connections, and it will help with troubleshooting and reporting for these connections. In addition to active/primary ISP uplinks, WAN Health will also monitor secondary/failover connections (such as WAN2 and LTE connections).



Meraki Dashboard:
Intuitive Centralized Management



Zero-Touch Cloud Provisioning:
Can be remotely deployed in minutes

