

Cisco Catalyst 9105 Series Access Points NEW

[Overview](#)[Positioning Map](#)[Platform Spec](#)[Licenses & Accessories](#)[EWC](#)

The Most Reasonable & Versatile Wi-Fi 6 in Enterprise Grade

With the emergence of many Wi-Fi compliant and IoT devices, most are connected over Wi-Fi. Since most apps are network dependent, bandwidth intensive, and latency sensitive, we are more dependent on the wireless network than ever before. An increasing number of devices connect to the network every year, ranging from high-performance client devices to low-bandwidth IoT devices, which puts your current network at risk for slower speeds.

The **Cisco Catalyst 9105 Series Access Points** provide a seamless experience anywhere for everyone, with [high scaling](#) and [unmatched performance in diverse network deployments](#). Going beyond the Wi-Fi 6 (802.11ax) standard, the Catalyst 9105 access points provide [integrated security](#), [resiliency](#), [operational flexibility](#), and [increased network intelligence](#).

Highlights

- Compact and Powerful
- 2x2 uplink/downlink MU-MIMO with two spatial streams
- PHY data rates up to [1.488 Gbps](#) (80 MHz with 5 GHz and 20 MHz with 2.4 GHz)
- Up to 29% smaller than similar competing products
- Optimized power consumption
- 2.5GE uplink and multiple downlinks to connect devices (Catalyst 9105t/w)
- IoT-Ready
- Embedded IoT radios enable [BLE 5.0](#) and Zigbee
- Custom IoT app hosting with Docker-style containers
- Remote Worker Solution [Office Extend AP (OEAP) mode]
- OfficeExtend AP (OEAP) mode enables [secure access to corporate network without VPN](#)
- [Zero-touch onboarding](#): Connect the access point out of the box without pre-provisioning by an IT admin
- [Directly connect to corporate SSID](#) with encrypted link: No additional VPN is needed, encrypted connectivity through Datagram Transport Layer Security (DTLS)



Cisco Catalyst 9105 Series Access Points NEW

Overview

Positioning Map

Platform Spec

Licenses & Accessories

EWC

Cisco Catalyst 9100 Series Access Points Positioning Map

High ↕	8×8:8 ^{*1} (5 GHz) + 4×4:4 (2.4 GHz)	1 × 5GE		Catalyst 9130
	4×4:4 (5 GHz) + 4×4:4 (2.4 GHz)	1 × 2.5GE		Catalyst 9120
	4×4:4 (5 GHz) + 4×4:4 (2.4 GHz)	1 × 2.5GE		Catalyst 9115
	2×2:2 (5 GHz) + 2×2:2 (2.4 GHz)	1 × 2.5GE (9105t/w) 1 × 1GE (9105i)		Catalyst 9105
Wi-Fi 6	Uplink	Wireless Client Density		→ High

*1 Single 8×8:8 or dual 4×4:4.

Cisco Catalyst 9105 Series Access Points NEW

Overview

Positioning Map

Platform Spec

Licenses & Accessories

EWC

Cisco Catalyst 9105 Series Access Points

Product SKU	Service SKU CSE 8×5×NBD	Software Image	Radio					Uplinks		Downlinks		PoE (PD)			Power Supply
			2.4 GHz	5 GHz	BLE	Antenna	Clients	1GE RJ45	2.5GE RJ45	1GE RJ45	1GE PoE RJ45	802.3af	802.3at	802.3bt	
C9105AXI-EWC-x	CON-SMBS-xxxxxxx	EWC	11ax 2×2:2	11ax 2×2:2	✓	Internal	400	1				✓	✓	✓	
C9105AXI-x	CON-SMBS-xxxxxxx	CAPWAP	11ax 2×2:2	11ax 2×2:2	✓	Internal	400	1				✓	✓	✓	
C9105AXIT-x	CON-SMBS-xxxxxxx	CAPWAP ^{*1}	11ax 2×2:2	11ax 2×2:2	✓	Internal	400		1	2	1	✓ ^{*2}	✓	✓	
C9105AXW-x	CON-SMBS-xxxxxxx	CAPWAP	11ax 2×2:2	11ax 2×2:2	✓	Internal	400		1	2	1	✓ ^{*2}	✓	✓	

*1 Office Extend AP (OEAP) mode only. *2 Some features are disabled when powered via 802.3af PoE.

Small Form Factor for Easy Placement



Cisco Catalyst 9105 Series Access Points NEW



Overview

Positioning Map

Platform Spec

Licenses & Accessories

EWC

Cisco DNA Licenses for Wireless*1

Software Package	Product SKU		
	3-Years	5-Years	7-Years
Cisco DNA Essentials*2	AIR-DNA-E-3Y	AIR-DNA-E-5Y	AIR-DNA-E-7Y
Cisco DNA Advantage*3	AIR-DNA-A-3Y	AIR-DNA-A-5Y	AIR-DNA-A-7Y
Cisco DNA Premier*4	AIR-DNA-P-3Y	AIR-DNA-P-5Y	AIR-DNA-P-7Y

- *1 Cisco DNA Licenses are required to connect to Catalyst 9800 wireless controllers **except for EWC**.
- *2 AIR-DNA and AIR-DNA-E are required in CCW.
- *3 AIR-DNA and AIR-DNA-A are required in CCW.
- *4 AIR-DNA and AIR-DNA-P are required in CCW.

Cisco Catalyst Power Injectors

Product SKU	Description	Compatible Model		
		9105i	9105t	9105w
AIR-PWRINJ5=	Power Injector (802.3af)	✓	✓*1	✓*1
AIR-PWRINJ6=	Power Injector (802.3at)	✓	✓	✓

*1 Some features are disabled.

TIP Ordering and Licensing Guide

For Cisco Catalyst 9800 Series Wireless Controllers-based deployments, a Cisco DNA License is required along with your access point in order to maximize the solution benefits. For Cisco Embedded Wireless Controller-based deployments, see [this page](#).

A Cisco Smart Account is needed when ordering an access point.

The Cisco Smart Account is a new solution that provides a central location to manage Cisco software licenses across an entire organization, allowing partners and customers to optimize their software management. To obtain a Cisco Smart Account, visit [Cisco Software Central](#) and select the [Request a Smart Account] option under the [Administration] heading.

software.cisco.com

TIP First Year On Us Promotion

Get one year free on a Cisco DNA Software for Wireless subscription when you purchase one or more Cisco Catalyst 9100 Series Access Points or Cisco Catalyst 9800 Series Wireless Controllers. This offer is available globally and is valid through [July 30, 2021](#).

www.cisco.com/c/en/us/solutions/enterprise-networks/enable-business-continuity-using-your-network/first-year-on-us-wireless-software-subscription.html

The screenshot shows the Cisco Commerce Configuration interface for selecting licenses for C9105AXW-Z. It features a configuration summary table with columns for Category, Qty, and Extended List Price (USD). Below this is a 'Software Subscription Migration Promo' section with a 'Warnings (3)' box. A 'Subscriptions' section is highlighted with a blue box, showing a table with columns for SKU, Duration (Months), and Unit List Price (USD). The table lists three options: DNA-E-PROMO-3Y (36 months, \$58.50), DNA-E-PROMO-5Y (60 months, \$84.00), and DNA-E-PROMO-7Y (84 months, \$109.50). A 'Promotional Licenses Example' label is placed below the subscription table.

Cisco Catalyst 9105 Series Access Points NEW

Overview

Positioning Map

Platform Spec

Licenses & Accessories

EWC

Enable Enterprise-class Wi-Fi 6 for the Mid-Market

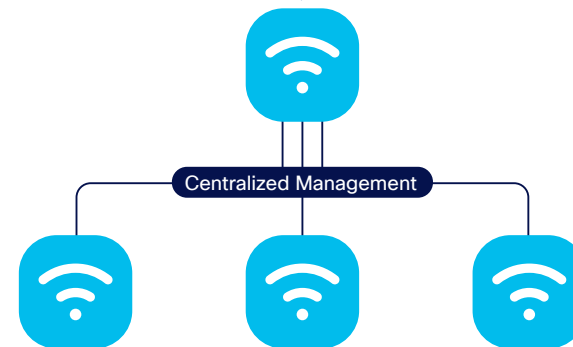
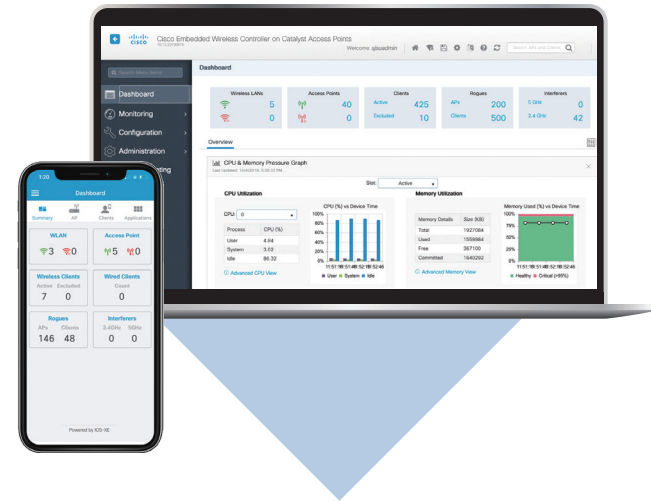
The Cisco Embedded Wireless Controller (EWC) on Catalyst Access Points provides you with a cost-effective, easy-to-deploy and manage, Wi-Fi 6 network. It's best suited for mid-size deployments, where its license-free smart dashboard and mobile app put intuitive and powerful control right in the palm of your hand. *Growth is never an issue*; the solution has the ability to easily migrate to an appliance or cloud-based controller deployment, allowing your investment to grow with you as your needs evolve. And with built-in enterprise-class security and resiliency features, you have peace of mind in knowing your network is protected and always-on.

- **Simple**
intuitive yet powerful, license-free smart dashboard and mobile app — just set it and forget it.
- **Flexible**
The license-free smart dashboard and mobile app enable control for up to 100 access points with easy migration to an appliance or cloud-based controller-deployment.
- **Secure**
With features like rogue detection, classification containment, and more, your network's integrity is protected.



*1 You can opt out of Cisco DNA subscription by selecting the appropriate DNA-OPTOUT SKU in CCW.

Wireless Control Function Right into Cisco Catalyst 9100 Series Access Points



Up to **50** access points and **1,000** clients (Catalyst 9105/9115)
Up to **100** access points and **2,000** clients (Catalyst 9120/9130)

 Key Benefits


Low-Cost “Set-It-and-Forget-It” Solution

With Cisco EWC, you get an affordable Cisco enterprise-class wireless solution without physical controller cost and includes best practices enabled by default. This allows you to focus on achieving your business outcomes rather than worrying about the network.



Easy Deployment and Simplified Management

- Deploy in minutes using the smart dashboard or mobile app
- Provision and extend via the smart dashboard or mobile app
- Simplified user interface to monitor, manage, and modify



Always-On Wi-Fi

- Active and standby EWC access points for network redundancy and minimum downtime
- Seamless software updates for quick fixes on bugs and fast rollout of new access points with no network interruptions



Safe, Self-Healing, and Self-Optimizing Wi-Fi

- Secure your devices, air, and network with Cisco CleanAir, Spectrum Intelligence, rogue detection, and mitigation
- Protect the employee and guest networks with robust 802.1X security, Cisco Umbrella DNS, and Walled Garden
- Defend user and IoT devices with Cisco Umbrella DNS and Identity PSK



Optimizing the User Experience

Control and prioritize the applications in your network with Cisco Application Visibility and Control. Optimize the Wi-Fi experience for Apple iOS devices and business applications. Set up, troubleshoot, and manage single or multiple sites with a mobile app, WebUI, Cisco Prime, or Cisco DNA Center.



Best-in-Class Guest and User engagement Experience

Offer flexible guest onboarding options with OpenRoaming or built-in internal or external guest splash pages and authentication options, including social login integration. Seamless integration with Cisco DNA Spaces helps you gain insights and drive engagement with customers.



Flexible and Scalable with Investment Protection

Start with the right number of access points for your organization. Then simply add more as your Wi-Fi coverage and capacity needs expand. Reuse the same access points and connect them to a physical controller if needed to allow a switch to a controller-based network. Use Cisco DNA Center to manage multiple EWC Wi-Fi sites for your distributed enterprises.



Cisco Catalyst 9105 Series Access Points NEW

Overview

Positioning Map

Platform Spec

Licenses & Accessories

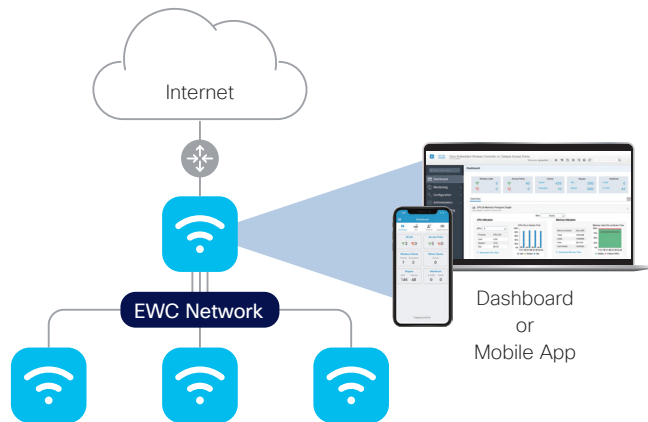
EWC

Licensing

Cisco Embedded Wireless Controller (EWC) on Catalyst Access Points licensing is dependent on each customer's specific use case.

Use Case A (No Subscription Needed)

The EWC can be used for small deployments where EWC is only managed using the smart dashboard or mobile app. For this use case, [a Cisco DNA subscription license and Smart Licensing is not required for any access point connecting to the EWC.](#)

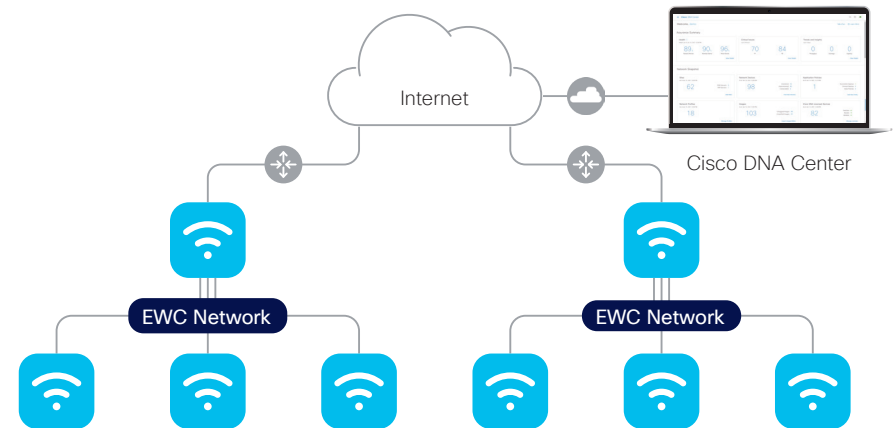


SKU	Qty	Estimated Lead Time	Unit List Price (USD)
<input type="radio"/> AIR-DNA-P	Qty	3 days	0.00
<small>Wireless Cisco DNA On-Prem Premier, Term, Licence More</small>			
<input type="radio"/> AIR-DNA-A	Qty	3 days	0.00
<small>Wireless Cisco DNA On-Prem Advantage, Term Lic More</small>			
<input type="radio"/> AIR-DNA-E	Qty	3 days	0.00
<small>Wireless Cisco DNA On-Prem Essential, Term Lic More</small>			
<input checked="" type="radio"/> E9105AXI-DNA-OPTOT	1	28 days	0.00
<small>Cisco Embedded Wireless Controller OPTOUT for C9105AXXV</small>			

Select "E9105AXI-DNA-OPTOT" in CCW for license-free deployment

Use Case B (Subscription Needed)

The EWC can be used for distributed office deployments with a need to manage multiple EWC networks from a centralized manager. For this use case, [a Cisco DNA subscription license and Smart Licensing is required.](#) This enables the customer to use Cisco DNA Center for automation and assurance, or if they are interested in advanced resiliency features [such as Software Maintenance Updates (SMU), AP Service Pack (APSP), or AP Device Pack (APDP)].



SKU	Qty	Estimated Lead Time	Unit List Price (USD)
<input type="radio"/> AIR-DNA-P-PROMO	1	3 days	0.00
<small>Wireless Cisco DNA On-Prem Premier, Term, PROMO Lic Includes Term Lic for CISCO DNA Advantage, Wireless AP Prime LFA&S, CMX Base, ISE Base and ISE Plus 25 End Points. Requires separate purchase of ISE appliance/ISE VM/CISCO DNA-Center appliance. Hide</small>			
<input type="radio"/> AIR-DNA-A-PROMO	1	3 days	0.00
<small>Wireless Cisco DNA On-Prem Advantage PROMO, Term Lic Aronnet CISCO PROMO DNA On-Prem Advantage Term Licenses Hide</small>			
<input checked="" type="radio"/> AIR-DNA-E-PROMO	1	3 days	0.00
<small>Wireless Cisco DNA On-Prem Essential, Term, PROMO Lic Aronnet PROMO CISCO DNA On-Prem Essentials Term Licenses Hide</small>			

Select "AIR-DNA-x-PROMO" in CCW for upselling of Cisco DNA license