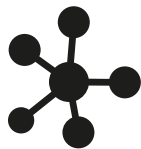




All-in-one security management solution, with integrated policy management, threat visibility, workflow and orchestration, enabling security consolidation across any IT environment.



Scalable Management on Demand



Faster Response to Threats



Efficient Security Operations



600-S | 600-M | 6000-L | 6000-XL



## QUANTUM SMART-1

600-S | 600-M | 6000-L | 6000-XL

R81 | SmartEvent | Compliance | Multi Domain Security Management

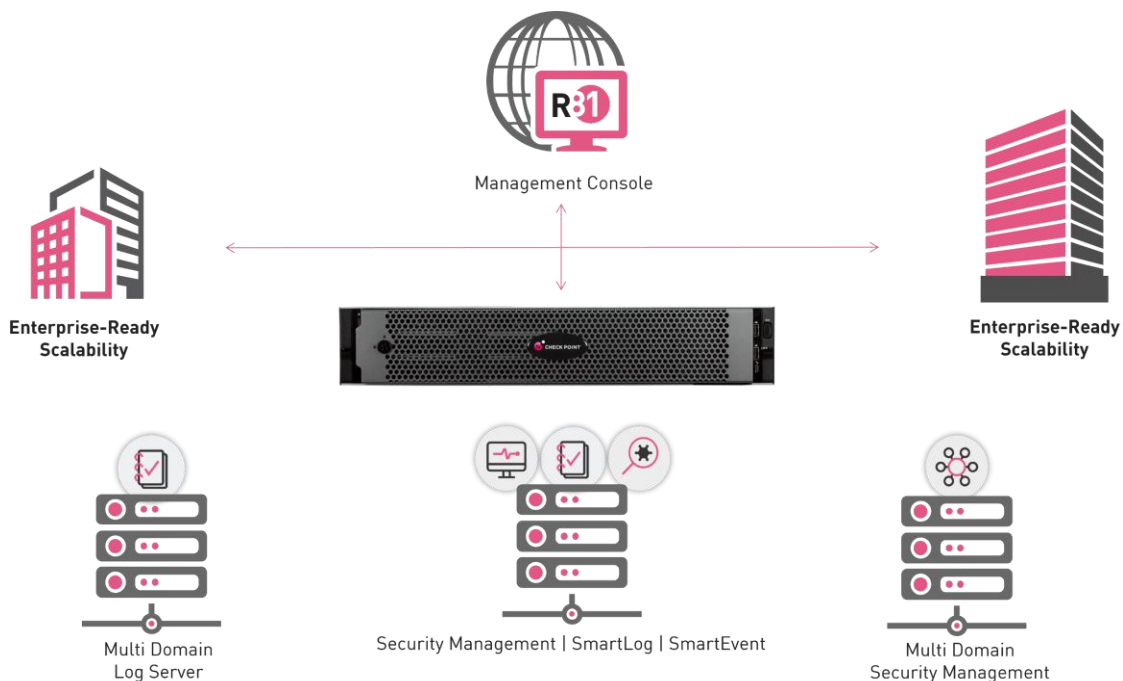
Growing networks, disruptive technologies, and the proliferation of interconnected devices demand a new approach to managing security. Check Point Infinity architecture consolidates management of multiple security layers, providing superior policy efficiency and enabling you to manage security through a single pane of glass. The single management centrally correlates all types of events across all network environments, cloud services and mobile infrastructures.

The Smart-1 600-S | 600-M | 6000-L | 6000-XL dedicated appliances are optimized for performance and scalability with both hardware and OS (operating system) hardened from the core.

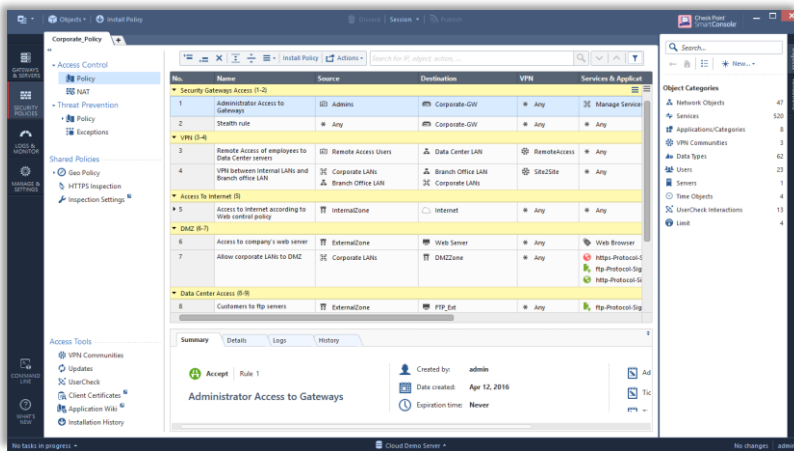
Smart-1 security management platforms double management capacity and boost performance, increasing security efficiency.

### Key Features and Benefits

- Scale the number of managed gateways on demand
- Respond to threats quickly with real-time event investigation, compliance, and reporting
- Faster system response and load time with increased memory (RAM) by 50% and new SSD storage



## SPOTLIGHT



### Unified Console to Manage Everything

With one console, security teams can manage all aspects of security from policy to threat prevention – across the entire organization – on both physical and virtual environments. Consolidated management means increased operational efficiency.

In addition to a unified console, you also now have a unified policy to manage everything from users to data to gateways. Access, controlled in one policy.

### Reports & Compliance

Take control and monitor all your gateways in real time. Easily generate and schedule reports. Over 300 Security Best Practices, regulatory compliance checks.

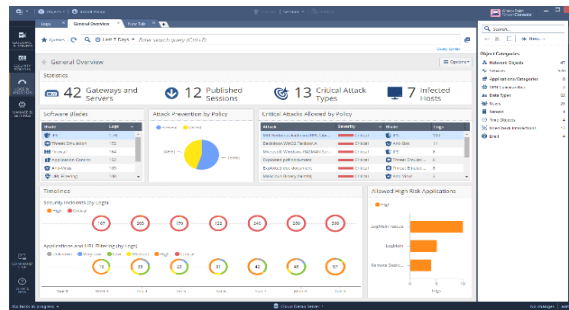


### Real Time Integrated Threat Management

For deep forensic analysis, we've integrated logging, monitoring, events, governance, and compliance. R81 SmartConsole gives you full visibility and control across your network.

### Security Efficient Operations and APIs

Improve productivity with automation API that orchestrates workflows and aligns security with IT processes and systems.



### Multi-domain Management

Easily manage hundreds of private networks within the same infrastructure and create up to 200 domains based on geography, business unit or security function.


### Modular and Scalable

Manage thousands of simultaneous sources, thousands of rules and millions of transactions with up to 48TB of data storage in a single machine.

Modular platform supporting up to 32 cores, 384GB RAM and 48TB of storage for any deployment environment.



## SPECIFICATIONS

Enterprise Grade		Ultra High End		
Appliances	600-S	600-M	6000-L	6000-XL
				
<b>Capacity &amp; Performance</b>				
Managed Gateways	5/10	25/50	75/150	200/400 <sup>1</sup>
Maximum Domains (Multi-Domain Management)	-	-	50	200
Sustained Indexed Logs per Sec	8,000/2,000 <sup>3</sup>	13,000/4,000 <sup>3</sup>	23,000/23,000 <sup>3</sup>	40,000/40,000 <sup>3</sup>
GB per Day of Logs	200/50 <sup>3</sup>	295/105 <sup>3</sup>	616/138 <sup>3</sup>	999/165 <sup>3</sup>
<b>Hardware Specifications</b>				
Cores	6	6	16	32
Storage Options <sup>4</sup>	1x 2TB HDD	2x 4TB HDD	6x or 12x 4TB HDD	6x 1TB, 6x or 12x 4TB SSD
Effective Storage (default)	2TB	4TB (RAID-1)	14.4TB (6x HDD RAID-6)	3.6TB (6x 1TB RAID-50) 14.4TB (6x 4TB RAID-6)
Effective Storage (max)			28.8TB (12x HDD RAID-60)	28.8TB (12x HDD RAID-60)
RAID Type	-	1	5, 6, 10, 50, 60 (5, 6, 50 for 6 disks)	5, 6, 10, 50, 60 (5, 6, 50 for 6 disks)
Memory (RAM) Default/Max	16/32 GB	32/64 GB	96/192 GB	192/384 GB
<b>Interfaces</b>				
Default Network Interfaces	10x Copper GbE	4x Copper GbE	4x Copper GbE	4x Copper GbE
Extended Network Interfaces	-	Optional	Optional	Optional
Console Port	1x RJ45, USB Type C	1x DB9 <sup>5</sup>	1x DB9 <sup>5</sup>	1x DB9 <sup>5</sup>
USB Ports	2	3	4	4
LOM (iDRAC) <sup>6</sup>	-	✓	✓	✓
<b>Physical</b>				
Enclosure	1U		2U	
Standard (W x D x H)	17.2 x 20 x 1.73 in.	17.08 x 27.74 x 1.68 in.	17.08 x 28.17 x 3.42 in.	
Metric (W x D x H)	438 x 508 x 44 mm	434 x 704.7 x 42.8 mm	434 x 715.5 x 86.8 mm	
Weight	7.5kg (16.5lbs.)	21.1kg (46.5lbs.)	28.6kg (63.1lbs.)	
<b>Power</b>				
Dual, Hot-Swappable PSU	No	Yes	Yes	Yes
Dual, Hot-Swappable DC PSU	No	No	Optional	Optional
Power Input	AC 100~240V @ 47~63Hz			
Power Supply Rating	150W	350W	750W	750W
Power Consumption (avg/max)	83W/150W	275W/350W	600W/750W	600W/750W
<b>Environment Conditions</b>				
Operating Environment	32° - 104° F / 0° - 40° C, 5~95% Humidity	41° - 95° F/5° - 35° C, 10~80% Humidity		
Storage Environment	-40° - 158° F/-40° - 70° C, 5~95% Humidity	-40° - 149° F/-40° - 65° C, 5~95% Humidity		
<b>Certifications</b>				
Safety/Emissions/Environment	UL / CE, FCC Class A / RoHS			

1. Manages up to five thousand 1500, 1600, 1800 security gateways when divided into multiple domains using MDM and using SmartProvisioning

2. In Multi-Domain configuration

3. 600-S and 600-M tested with SmartLog and SmartEvent configuration, 6000-L/6000-XL tested with dedicated SmartEvent configuration

4. for the 48TB option order (6) additional 4TB drives 5. DB9 to RJ-45 adapter included 6. See [sk122914](#) for the iDRAC supported features

## ORDERING SMART-1 APPLIANCES

Smart-1 Appliances <sup>1</sup>	SKU
<b>Smart-1 600-S</b>	
Smart-1 600-S Base Security Management, Log and SmartEvent appliance for 5 gateways (SmartEvent & Compliance 1 year)	CPAP-NGSM600S-BASE
Smart-1 600-S Base SmartEvent appliance for 5 gateways (perpetual)	CPAP-NGSM600S-BASE-EVNT
Smart-1 600-S Plus Gen-6 Security Management, Log and SmartEvent appliance for 10 GWs (SmartEvent & Compliance 1 year)	CPAP-NGSM600S-PLUS
Smart-1 600-S Plus SmartEvent dedicated appliance for 10 gateways (perpetual) including SmartEvent, SmartEvent	CPAP-NGSM600S-PLUS-EVNT
<b>Smart-1 600-M</b>	
Smart-1 600-M Base Gen-6 Security Management, Log and SmartEvent appliance for 25 gateways (SmartEvent & Compliance 1 year)	CPAP-NGSM600M-BASE
Smart-1 600-M Base SmartEvent dedicated appliance for 25 gateways (perpetual)	CPAP-NGSM600M-BASE-EVNT
Smart-1 600-M Plus Security Management, Log and SmartEvent appliance for 50 gateways (SmartEvent & Compliance 1 year)	CPAP-NGSM600M-PLUS
Smart-1 600-M Plus SmartEvent dedicated appliance for 50 gateways (perpetual)	CPAP-NGSM600M-PLUS-EVNT
<b>Smart-1 6000-L</b>	
Smart-1 6000-L Base Security Management, Log and SmartEvent appliance for 75 gateways (SmartEvent & Compliance 1 year), 96 GB RAM, 24 TB HDD, 2x AC PSUs, LOM	CPAP-NGSM6000L-BASE
Smart-1 6000-L Base Multi-Log appliance for 75 gateways and 10 domains (perpetual), 96 GB RAM, 24 TB HDD, 2x AC PSUs, LOM	CPAP-NGSM6000L-BASE-MLOG-10
Smart-1 6000-L Base SmartEvent appliance for 75 gateways (perpetual), 96 GB RAM, 24 TB HDD, 2x AC PSUs, LOM	CPAP-NGSM6000L-BASE-EVNT
Smart-1 6000-L Plus Security Management, Log and SmartEvent appliance for 150 gateways (SmartEvent & Compliance 1 year), 192 GB RAM, 24 TB HDD, 2x AC PSUs, LOM	CPAP-NGSM6000L-PLUS
Smart-1 6000-L Plus Multi-Log appliance for 150 gateways and 10 domains (perpetual), 192 GB RAM, 24 TB HDD, 2x AC PSUs, LOM	CPAP-NGSM6000L-PLUS-MLOG-10
Smart-1 6000-L Plus SmartEvent appliance for 150 gateways (perpetual), 192 GB RAM, 24 TB HDD, 2x AC PSUs, LOM	CPAP-NGSM6000L-PLUS-EVNT
<b>Smart-1 6000-XL</b>	
Smart-1 6000-XL Base Recommended Security Management appliance for 200 gateways (SmartEvent & Compliance 1 year), 192 GB RAM, 6x 1TB SSD, 2x AC PSUs, LOM	CPAP-NGSM6000XL-BASE-MGMT
Smart-1 6000-XL Base Security Management, Log and SmartEvent appliance for 200 gateways (SmartEvent & Compliance 1 year), 192 GB RAM, 6x 4TB SSD, 2x AC PSUs, LOM	CPAP-NGSM6000XL-BASE
Smart-1 6000-XL Base Multi-Log appliance for 200 Gateways and 10 domains (perpetual), 192 GB RAM, 6x 4TB SSD, 2x AC PSUs, LOM	CPAP-NGSM6000XL-BASE-MLOG10
Smart-1 6000-XL Base appliance SmartEvent for 200 Gateways (perpetual), 192 GB RAM, 6x 4TB SSD, 2x AC PSUs, LOM	CPAP-NGSM6000XL-BASE-EVNT
Smart-1 6000-XL Plus Recommended Security Management appliance for 400 gateways (SmartEvent & Compliance 1 year), 384 GB RAM, 6x 1TB SSD, 2x AC PSUs, LOM	CPAP-NGSM6000XL-PLUS-MGMT
Smart-1 6000-XL Plus Security Management, Log and SmartEvent appliance for 400 gateways (SmartEvent & Compliance 1 year), 384 GB RAM, 6x 4TB SSD, 2x AC PSUs, LOM	CPAP-NGSM6000XL-PLUS
Smart-1 6000-XL Plus Multi-Log appliance for 400 gateways and 10 domains (perpetual), 384 GB RAM, 6x 4TB SSD, 2x AC PSUs, LOM	CPAP-NGSM6000XL-PLUS-MLOG10
Smart-1 6000-XL Plus SmartEvent appliance for 400 gateways (perpetual), 384 GB RAM, 6x 4TB SSD, 2x AC PSUs, LOM	CPAP-NGSM6000XL-PLUS-EVNT

<sup>1</sup> SmartEvent and Compliance for one year, extension SKUs are available

	6000-L		6000-XL			
	BASE	PLUS	BASE		PLUS	
Managed Gateways	75	150	200		400	
Memory (GB)	96	192	192		384	
Storage (default/max)	24/48TB HDD	24/48TB HDD	Management 6TB SSD	Log Option <sup>(1)</sup> 24/48TB SSD	Management 6TB SSD	Log Option <sup>(1)</sup> 24/48TB SSD
Effective Storage (default)	14.4TB (6x HDD RAID-6)		3.6TB (6x 1TB RAID-50)	14.4TB (6x 4TB RAID-6)	3.6TB (6x 1TB RAID-50)	14.4TB (6x 4TB RAID-6)
Effective Storage (max)				28.8TB (12x 4TB RAID-60)		28.8TB (12x 4TB RAID-60)
Redundant Power	✓	✓	✓		✓	
LOM	✓	✓	✓		✓	
I/O Expansion Slots	3 SAN		3 SAN			
I/O Card Options	2x 10GbE SFP+ 2x 1GbE SFP		2x 10GbE SFP+ 2x 1GbE SFP			

<sup>1</sup> Log option includes Management, Logs and SmartEvent with additional storage capacity, for the 48TB option order (6) additional 4TB drives

## ORDERING SMART-1 APPLIANCES (continued)

Smart-1 6000 Upgrades	SKU
<b>Smart-1 6000-L Base to Plus</b>	
Upgrade kit of Smart-1 6000-L Base Security Management, Log and SmartEvent to Smart-1 6000-L Plus Security Management, Log and SmartEvent	CPAC-NGSM6000L-UPG-PLUS
Upgrade kit of Smart-1 6000-L Base Multi-Log to Smart-1 6000-L Plus SmartEvent	CPAC-NGSM6000L-UPG-PLUS-MLOG
Upgrade kit of Smart-1 6000-L Base SmartEvent to Smart-1 6000-L Plus SmartEvent	CPAC-NGSM6000L-UPG-PLUS-EVNT
<b>Smart-1 6000-XL Base to Plus</b>	
Upgrade kit of Smart-1 6000-L Base Recommended for Security Management to Smart-1 6000-L Plus Dedicated Security Management	CPAC-NGSM6000XL-UPG-PLUS-MGMT
Upgrade kit of Smart-1 6000-XL Base Security Management, Log and SmartEvent to Smart-1 6000-XL Plus Security Management, Log and SmartEvent	CPAC-NGSM6000XL-UPG-PLUS
Upgrade kit of Smart-1 6000-L Base Multi-Log to Smart-1 6000-L Plus Multi-Log	CPAC-NGSM6000L-UPG-PLUS-MLOG
Upgrade kit of Smart-1 6000-XL Base SmartEvent to Smart-1 6000-L Plus SmartEvent	CPAC-NGSM6000XL-UPG-PLUS-EVNT

Smart-1 6000 Accessories	
<b>Interface Cards and Transceivers</b>	
Storage Area Network (SAN) Interface expansion card for Smart-1 6000-L/6000-XL	CPAC-SAN-SM6000-L/XL
2 Port 10GBase-F SFP+ interface card for Smart-1. Requires 10GBase SFP+ transceiver per port.	CPAC-2-10F-SM-C
SFP+ transceiver for 10G fiber ports - short range (10GBase-SR)	CPAC-TR-10SR-C
SFP+ transceiver for 10G fiber ports - long range (10GBase-LR)	CPAC-TR-10LR-C
2 Port 1GBase-F SFP interface card. Requires an additional 1GBase SFP transceiver per port.	CPAC-2-1F-SM-C
SFP transceiver for 1000 Base-T RJ45 (Copper)	CPAC-TR-1T-C
SFP transceiver for 1G fiber ports - short range (1000Base-SX)	CPAC-TR-1SX-C
SFP transceiver for 1G fiber ports - long range (1000Base-LX)	CPAC-TR-1LX-C
<b>Hardware Expansion</b>	
Memory upgrade kit from 92GB to 192GB for Smart-1 6000-L management appliance	CPAC-RAM96GB-SM6000L
Memory upgrade kit from 192GB to 384GB for Smart-1 6000-XL management appliance	CPAC-RAM192GB-SM6000XL
Replacement 1TB SSD for Smart-1 6000-XL appliance	CPAC-SSD-1TB-SM6000-XL
Additional/Replacement 4TB SSD for Smart-1 6000-XL appliance	CPAC-SSD-4TB-SM6000-XL
Additional/Replacement 4TB Hard Drive for Smart-1 6000-L appliance	CPAC-HDD-4TB-SM6000-L
<b>Spares, Replacements and Rails</b>	
Replacement AC Power Supply for Smart-1 6000-L/6000-XL management appliance	CPAC-PSU-AC-SM6000-L/XL
Dual DC power supplies for Smart-1 6000-L/6000-XL appliance	CPAC-PSU-DC-Dual-SM6000-L/XL
Slide RAILS for Smart-1 6000-L/6000-XL appliance (24" - 36")	CPAC-RAILS-SM6000-L/XL

	600-S		600-M	
	BASE	PLUS	BASE	PLUS
Managed Gateways	5	10	25	50
Memory (GB)	16	32	32	64
Storage	1x 2TB HDD		2x 4TB HDD	
Redundant Power	-	-	✓	✓
LOM	-	-	✓	✓
I/O Expansion Slots	-	-	-	1
I/O Card Options	-	-	-	2x 10GbE SFP+ 2x 1GbE SFP

## ORDERING SMART-1 APPLIANCES (continued)

Smart-1 600 Upgrades		SKU
<b>Smart-1 600-M Base to Plus</b>		
Upgrade kit of Smart-1 600-M Base Security Management Server, Log and SmartEvent to Smart-1 600-M Plus Security Management Server, Log and SmartEvent		CPAC-NGSM600M-UPG-PLUS
Upgrade kit of Smart-1 600-M Base SmartEvent to Smart-1 600-M Plus SmartEvent		CPAC-NGSM600M-UPG-PLUS-EVNT
<b>Smart-1 600-S Base to Plus</b>		
Upgrade kit of Smart-1 600-S Base Security Management, Log and SmartEvent to Smart-1 600-S Plus Security Management, Log and SmartEvent		CPAC-NGSM600S-UPG-PLUS
Upgrade kit of Smart-1 600-S Base SmartEvent to Smart-1 600-S Plus SmartEvent		CPAC-NGSM600S-UPG-PLUS-EVNT

Smart-1 600-M Accessories		SKU
<b>Interface Cards and Transceivers</b>		
2 Port 10GBase-F SFP+ interface card, requires 10GBase SFP+ transceiver per port		CPAC-2-10F-SM-C
SFP+ transceiver for 10G fiber ports - short range (10GBase-SR)		CPAC-TR-10SR-C
SFP+ transceiver for 10G fiber ports - long range (10GBase-LR)		CPAC-TR-10LR-C
2 Port 1GBase-F SFP interface card, requires an additional 1GBase SFP transceiver per port		CPAC-2-1F-SM-C
SFP transceiver for 1G fiber ports - short range (1000Base-SX)		CPAC-TR-1SX-C
SFP transceiver for 1G fiber ports - long range (1000Base-LX)		CPAC-TR-1LX-C
SFP transceiver to 1000 Base-T RJ45 (Copper)		CPAC-TR-1T-C
<b>Hardware Expansion</b>		
Smart-1 600-M 64GB RAM (replace)		CPAC-RAM64GB-SM600M
Smart-1 600-M additional/replacement 4TB Hard Drive		CPAC-HDD-4TB-SM600M
Smart-1 600-M replacement AC Power Supply		CPAC-PSU-AC-SM600M
<b>Spares, Replacements and Rails</b>		
Smart-1 600-M Slide rails (24" – 36")		CPAC-RAILS-SM600M

Smart-1 600-S Accessories		SKU
<b>Hardware Expansion</b>		
Smart-1 600-S memory upgrade from 16 to 32 GB		CPAC-RAM16GB-600S
<b>Spares, Replacements and Rails</b>		
Smart-1 600-S Slide rails		CPAC-RAILS-600S
Smart-1 600-S Telescopic rails		CPAC-RAILS-EXT-600S

## ORDERING QUANTUM MANAGEMENT SOFTWARE

Additional Security Management Features and Extensions	SKU
<b>Additional Security Management Features</b>	
Unlimited LSM gateways extension for Next Generation Security Management	CPSB-LSM-EXT-U
SmartEvent Additional Correlation Unit	CPSM-EVNT-COR
<b>Additional Extensions</b>	
Compliance extension of 50 GWs (for Smart-1 and open server 150) subscription for 1 year	CPSB-COMP-EXT-50-1Y
SmartEvent extension of 50 GWs (for Smart-1 and open server 150) subscription for 1 year	CPSB-EVS-EXT-50-1Y
SmartEvent, SmartReporter and Compliance blades extension of 50 gateways (Smart-1 & open server) 1 year subscription	CPSB-EVS-COMP-EXT-50-1Y
<b>Additional Domains</b>	
5 domains package for Multi-domain Security Management	CPSB-DMN-5
10 domains package for Multi-domain Security Management	CPSB-DMN-10
25 domains package for Multi-domain Security Management	CPSB-DMN-25
50 domains package for Multi-domain Security Management	CPSB-DMN-50
100 domains package for Multi-domain Security Management	CPSB-DMN-100

Open Server Management Software Products	SKU
Next Generation Security Management Software Multi-domain for 150 gateways and 5 domains (SmartEvent & Compliance 1 year)	CPSM-NGSM150-MD5
Next Generation Security Management SmartEvent dedicated Server for 150 gateways (perpetual)	CPSM-NGSM150-EVNT
Next Generation Security Management Software for 150 gateways (SmartEvent & Compliance 1 year)	CPSM-NGSM150
Next Generation Security Management Multi-Log Manager software for 150 gateways and 10 domains (perpetual)	CPSM-NGSM150-MLOG10
50 gateways extension for Next Generation Security Management Server to: Smart-1 6000-XL Plus/Smart-1 5150/NGSM-150	CPSB-GW-EXT-50
Next Generation Security Management Software Multi-domain for 50 gateways and 5 domains (SmartEvent & Compliance 1 year)	CPSM-NGSM50-MD5
Next Generation Security Management SmartEvent dedicated Server for 50 gateways (perpetual)	CPSM-NGSM50-EVNT
Next Generation Security Management Software for 50 gateways (SmartEvent & Compliance 1 year)	CPSM-NGSM50
Next Generation Security Management Multi-Log Manager software for 50 gateways and 10 domains (perpetual)	CPSM-NGSM50-MLOG10
Next Generation Security Management Software Multi-domain for 25 gateways and 5 domains (SmartEvent & Compliance 1 year)	CPSM-NGSM25-MD5
Next Generation Security Management SmartEvent dedicated Server for 25 gateways (perpetual)	CPSM-NGSM25-EVNT
Next Generation Security Management SmartEvent dedicated Server for 25 gateways (perpetual)	CPSM-NGSM25
Next Generation Security Management Log dedicated software for 25 gateways (perpetual)	CPSM-NGSM25-LOG
Next Generation Security Management SmartEvent dedicated Server for 10 gateways (perpetual)	CPSM-NGSM10-EVNT
Next Generation Security Management Software for 10 gateways (SmartEvent & Compliance 1 year)	CPSM-NGSM10
Next Generation Security Management Log dedicated software for 10 gateways (perpetual)	CPSM-NGSM10-LOG
Next Generation Security Management Software for 5 gateways (SmartEvent & Compliance 1 year)	CPSM-NGSM5
Next Generation Security Management SmartEvent dedicated Server for 5 gateways (perpetual)	CPSM-NGSM5-EVNT