

IN3100 (SERIES)

InFocus
Bright Ideas Made Brilliant

Simply Powerful

The Right Connections - Always Brilliant
Ease of Use - Robust Features



IN3100 (SERIES)

Connect and project

Full functionality in a portable package. The new IN3100 series from InFocus brings big-picture quality and plug and play ease to the portable projector. Meeting set-up is now simpler than ever, with expanded network connectivity options.

With DisplayLink™, you can connect using one USB cable for content and audio transfer, and full projector control from your PC. Also HDMI 1.3, LitePort™ and a wireless-ready port gives even more connection options.

A maximum brightness of 3500 lumens, resolution of up to WUXGA (1920 × 1200) using Texas Instruments' DLP® DarkChip™ technology, and InFocus award-winning BrilliantColor™ implementation give the IN3100 series industry-leading picture quality.



IN3114

XGA (1024 × 768) RESOLUTION
3500 LUMENS

The InFocus IN3114 offers a spectrum of connection options with high-quality projection in a portable projector.

IN3116

WXGA (1280 × 800) RESOLUTION
3500 LUMENS

The InFocus IN3116 gives presenters a full spectrum of features and options for great presentations every time.

Resolution Options

Choose from XGA (1024 × 768) or widescreen WXGA (1280 × 800) resolution. WXGA is the standard resolution in most technology devices today and has been widely adopted in business and education.



XGA
1,024 x 768 PIXELS

WXGA
1,280 x 800 PIXELS



InFocus lens cap slider

"We factored in customer feedback on our award-winning IN3100 series and made it even better. Better lens, audio, control, JPEG playback and integrated networking designed into the IN3100 sets a new standard for high performance meeting room projection."

Robert Detwiler
InFocus Product Manager



24/7 Non-Stop Projection

The new IN3100 series has no duty cycle limitations. It is filter-free and rated for 24/7 fail-safe operation, resulting in less maintenance and hours of worry-free use.

Low Power Consumption

The new IN3100 series is an easy choice for your wallet and the environment; with maximum brightness at full power, an eco-friendly Eco Mode will lower the power setting by 20%. While in standby mode, the IN3100 series consumes less than 1 watt of power.

Designed for Long Life

The new IN3100 series is designed to have a low cost of ownership and reliability over a long life. The IN3100's dust-resistant design means there is no filter or screen to replace, and the InFocus warranty reduces the risk of repair or replacement cost.

Clean, Installation-friendly Design

No need to remove the projector from the ceiling to check assets or replace a lamp – the new IN3100's design allows for easy access to lamp doors, serial numbers and I/O panels. In addition, the LiteTouch™ keypad gives the projector a clean look once it is installed.

LiteTouch Touchsense Keypad

The sleek backlit LiteTouch control panel provides one-touch access to the most commonly used projector functions.



Projector Management

The new IN3100 series has imbedded network services with web browser control. This projector model is also compatible with ProjectorNet™ 3.0, our free asset management software that enables you to conserve the projector's lamp life by scheduling On/Off times, presenting maintenance events and anti-theft security alerts.

Dynamic Messaging System

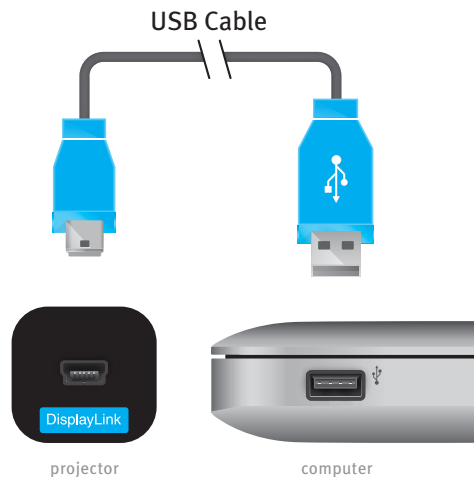
Send dynamic messages for instant display to InFocus projectors using the InFocus Dynamic Messaging System (DMS). This is perfect for announcements such as schedule changes, weather warnings, breaking news, and emergency notifications.

PC-Free Presentations

The new IN3100 series features LitePort, an embedded PC-free JPEG Reader that enables users to project images directly from a standard USB flash drive – no computer needed.

Plug and Project

InFocus DisplayLink technology transmits audio and video content over mini-USB, offering the simplicity of zero display setup. Easy to carry and simple to use, DisplayLink eliminates the need to toggle screens. The on-screen remote provides complete control from the PC to your InFocus projector thanks to the DisplayLink software.

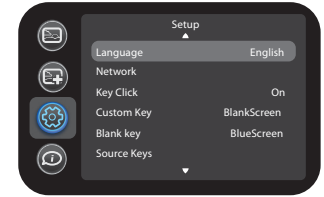


Bright and Brilliant

A high brightness of 3500 lumens means the new IN3100 series is bright enough in environments with high ambient light. The InFocus BrilliantColor implementation brings rich, realistic color to any presentation.

Intuitive and Easy to Use Interface

Over 20 years of customer feedback has gone into designing the new IN3100 series best-in-class menu system. It is easy to navigate, has 17 standard languages and a unique intuitive flow.



LiteShow II™

The InFocus LiteShow II wireless adapter connects personal computers to InFocus digital projectors wirelessly. The high bandwidth 802.11 b/g connection supports simultaneous transmission of audio along with video/data content, providing a completely wireless multimedia presentation.

Security

The new IN3100 series has a Kensington® lock compatible slot along with a user assigned PIN feature for maximum security.



LiteShow II

Optional Accessories

Replacement Lamp (SP-LAMP-058)
 Universal Ceiling Mount (SP-CEIL-UNIV)
 Extension Arms (SP-EXTARM-01, 02, 03, 04)
 LiteShow II (INLITESHOW2)
 DisplayLink Extender (SP-DOUSB-EXTENDER)
 Wireless DisplayLink (SP-DOUSB-WIRELESS)
 Alternate Remote (HW-COMMANDER-2)
 Alternate Remote (HW-PRESENTER-RF-R)
 Projector Screen (SC-PD-80, 100, 120)
 Cables & Adapters

For more information, please visit:
www.infocus.com/Accessories.aspx

Warranty

Providing the highest quality products and support is very important to InFocus. The new IN3100 series digital projectors come standard with a 5 year limited factory warranty (including parts¹ and labor²) a 6 month limited lamp replacement warranty and 5 year DLP warranty. Extended product and lamp warranty programs are also available.

For more information, please visit:
www.infocus.com/Support/Warranty.aspx

IN3100^(SERIES) FEATURES

- 10 W Audio
- Auto Keystone
- BrilliantColor
- Built-In Network Services and ProjectorNet 3.0 Ready
- Closed Captioning
- DisplayLink Plug & Play
- Dust Resistant Design
- Dynamic Messaging System (DMS)
- HDMI 1.3
- InFocus User Interface
- Lens Cap Slider
- LitePort USB JPEG Player
- LiteSwitch Instant On/Off
- LiteShow II Wireless Ready
- LiteTouch Touchsense Keypad
- Logo Capture
- Low Power Standby (<1 W)
- RJ45
- Sleep Timer



InFocus
 Bright Ideas Made Brilliant

www.infocus.com

INFOCUS CORPORATE HEADQUARTERS
 13190 SW 68th Parkway
 Portland, Oregon 97223-8368, USA
 Phone: (1) 503-207-4700
 Toll Free: (1) 877-388-8385
 Fax: (1) 503-207-1937

INTERNATIONAL HEADQUARTERS
 1 Fullerton Road
 One Fullerton
 Singapore 049213
 Phone: (65) 6513-9600
 Fax: (65) 6238-0535

©2009 InFocus Corporation. All rights reserved. Specifications are subject to change without further notice. InFocus and InFocus Bright Ideas Made Brilliant are either trademarks or registered trademarks of InFocus Corporation in the United States and other countries. DLP, the DLP logo, and the DLP medallion are trademarks of Texas Instruments. All trademarks are used with permission or are for identification purposes only and are the property of their respective companies.
¹Excludes power supply, fans, color wheel and light tunnel which are covered for two (2) years.
²Labor is covered for two (2) years from date of proof of purchase.
 InFocus_IN3100_NEW_DS_EN_16DEC09. Part Number: MMINFOCUS-0204

Specifications*

IN3114 **IN3116**

Native Resolution	IN3114 – XGA 1024 × 768 IN3116 – WXGA 1280 × 800
Maximum Resolution	WUXGA (1920 × 1200)
Display Technology - DMD	IN3114 – DLP Technology .55" LVDS DDP2430 with BrilliantColor IN3116 – DLP Technology .65" LVDS DDP2431 with BrilliantColor
Brightness	3500 ANSI lm (2800 lm Eco Mode)
Lamp Life**	4000 Hrs Eco Mode (3000 Hrs Normal)
Contrast Ratio	2100:1 Typical
Audible Noise	30 dB Eco Mode (34 dB High Power)
Computer Compatibility	PC, MAC
Keystone Correction	Automatic, +/-30 degrees
Number of Colors	16.7 Million, True Color
Aspect Ratio	IN3114 – Native 4:3 (5:4, 16:9, 16:10 Supported) IN3116 – Native 16:10 (4:3, 5:4, 16:9 Supported)
Lamp Power	280 W
Power Supply	100 – 240 Vac, 50/60 Hz
Zoom Ratio	1.2:1
Throw Ratio	IN3114 – 1.62 – 1.95 IN3116 – 1.5 – 1.8
Video Compatibility	NTSC / NTSC4.43 / PAL / PAL-M / PAL-N / SECAM SDTV: 480i, 576i EDTV: 480p, 576p HDTV: 720p, 1080i, 1080p
Audio	10 W (2 × 5 W)
Input Sources	VGA (HD15) × 2, S-Video × 1, Composite Video × 1, DisplayLink × 1, HDMI 1.3 × 1, Audio × 4 (3.5 mm × 2, DisplayLink × 1, HDMI 1.3 × 1), LitePort × 1
Output Sources	VGA (HD15) × 1, Audio × 1 (3.5 mm), Wireless Ready × 1
Control	LAN (RJ45), RS232, DisplayLink (USB)
Projection Distance	3.94 ft – 32.8 ft / 1.2 m – 10 m
Image Offset	15%
Projection Methods	Front, Rear, Ceiling Front, Ceiling Rear
Product Weight	7 lbs / 3.17 kg
Product Dimensions - W×D×H	12.4 × 9.5 × 4.6 in / 315 × 241 × 117 mm
Product Color	Black and Silver
Shipping Dimension - W×D×H	8.8 × 18.8 × 13.1 in / 223 × 477 × 332 mm
Shipping Weight	14.3 lbs / 6.48 kg
Maximum Altitude	10,000 ft / 3,000 m
Remote Control	Navigator - 3
Ships With - Accessories	Remote, VGA Cable, Power Cord, USB Cable, Carry Case, Safety Instructions, Projector User's Guide, DisplayLink User's Guide
Menu Languages	English, French, German, Italian, Korean, Norwegian, Portuguese, Russian, Spanish, Traditional Chinese, Simplified Chinese, Swedish, Finnish, Danish, Dutch, Polish, Turkish
Lamp (particle) Containment	Tested to contain particles larger than 0.8 mm ***
Accessories Warranty	90 days
Approvals	C-Tick (Australia), NOM (Mexico), CE (Europe), cMETus (USA & Canada), FCC (USA), IRAM (Argentina), GOST (Russia), MIC & eK (South Korea), CCC (China), PSB (Singapore)
Security	Kensington Lock
DisplayLink Operating System	Windows® XP, Windows Vista, MAC® OS X
System Requirements	Windows: 1.2GHz CPU and 512MB memory MAC: Apple Intel OS X 10.4.11 or higher
DisplayLink Max Resolution	4:3 (1400 × 1050) 16:10 (1140 × 900)

* Product specifications, terms, and offerings are subject to change at any time without notice.
 ** Actual lamp life may vary based on the ambient environment and projector usage. Conditions that may affect lamp life include temperature, altitude, and rapidly switching the projector on and off.
 *** Tested to contain particles larger than the specified size in any dimension

