



# HP Elite Slice G2 - Audio Ready with Zoom Rooms

## How conferencing should be

Designed for rooms of all sizes with 3rd party AV accessories, the HP Elite Slice G2 - Audio Ready with Zoom Rooms<sup>2</sup> helps simplify meetings. Easily connect<sup>3</sup> with the Center of Room Control and mount with an HP VESA Plate.<sup>4</sup>



- Windows 10 IoT Enterprise<sup>1</sup>

### Ready to go

- Simplify your Zoom Rooms deployment with a compute device pre-imaged with Zoom Rooms software and packaged with an easy to use, moveable 12.3-inch diagonal Center of Room Control display, HDMI adapters, and a port cover.

### One-touch collaboration

- Enjoy on-demand calling and flexible accessibility. Easily add attendees and share content with one touch on the anti-glare screen of the Center of Room Control with dual viewing angles and familiar Zoom Rooms interface.<sup>3</sup>

### Connect to existing audio and video<sup>2</sup>

- Show your team in the best light and easily connect your Zoom Rooms interface systems, audio, and video peripherals to HP Elite Slice G2 - Audio Ready with Zoom Rooms.<sup>2</sup>

### Stress free. Worry free.

- Get setup quickly with hassle-free installation and intuitive user operation—no assembly or specialized skills required. Easily manage, deploy, and secure your meeting room system.
- Cut the cable and easily present content wirelessly from your laptop or mobile device to the Zoom meeting.<sup>2</sup>
- Protect your PC from the ground up with a self-healing BIOS. HP Sure Start Gen3 automatically recovers the BIOS from malware, rootkits or corruption to help increase security, minimize downtime, and prevent breaches.<sup>5</sup>
- The port cover on the HP Elite Slice G2 - Audio Ready with Zoom Rooms and the optional HP Keyed Cable Lock 10 mm help secure your system in the conference room.<sup>2,4</sup>
- Mount your HP Elite Slice G2 - Audio Ready with Zoom Rooms to a fixed location behind a display or on a desk or table with the optional HP VESA Plate that allows it to be anchored with the 100 x 100 VESA pattern.<sup>2,4</sup>

## HP Elite Slice G2 - Audio Ready with Zoom Rooms Specifications Table



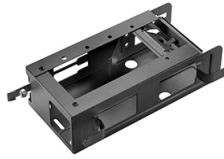
<b>Available Operating Systems</b>	Windows 10 IoT Enterprise 64 <sup>1</sup>
<b>Processor family<sup>2</sup></b>	7th Generation Intel® Core™ i5 processor (i5-7500T); 7th Generation Intel® Core™ i7 processor (i7-7700T)
<b>Available Processors<sup>3,4,5,27</sup></b>	Intel® Core™ i5-7500T with Intel® HD Graphics 630 (2.7 GHz base frequency, up to 3.3 GHz with Intel® Turbo Boost Technology, 6 MB cache, 4 cores) supports Intel® vPro™ Technology Intel® Core™ i7-7700T with Intel® HD Graphics 630 (2.9 GHz base frequency, up to 3.8 GHz with Intel® Turbo Boost Technology, 8 MB cache, 4 cores), supports Intel® vPro™ Technology
<b>Chipset<sup>27</sup></b>	Intel® Q170
<b>Form factor</b>	Ultra-small form factor
<b>Maximum memory</b>	32 GB DDR4-2666 SDRAM <sup>6</sup> Transfer rates up to 2666 MT/s.
<b>Memory slots</b>	2 DIMM
<b>Internal storage</b>	128 GB up to 256 GB PCIe® NVMe™ TLC M.2 SSD <sup>7</sup> 128 GB up to 256 GB SATA SSD <sup>7</sup>
<b>Display<sup>15</sup></b>	12.3" diagonal FHD LCD touch screen (1440 x 960)
<b>Available Graphics</b>	Integrated: Intel® HD Graphics 630 <sup>11</sup>
<b>Audio</b>	Conexant CX7501 codec, universal audio jack that is retaskable
<b>Expansion slots</b>	1 M.2 2230; 1 M.2 2280 <sup>8</sup>
<b>Ports and Connectors</b>	Side: 1 audio-in/out; 1 USB 3.1 Type-C™ Back: 1 DisplayPort™; 1 HDMI; 1 power connector; 1 RJ-45; 1 USB 3.1 Type-C™ (alternate mode DP); 2 USB 3.1 Gen 1; HP Video Ingest Module with HDMI input <sup>9</sup>
<b>Available Keyboards</b>	USB Business Slim Wired Keyboard <sup>12,13</sup>
<b>Available Pointing Devices</b>	HP USB 1000 dpi Laser Mouse; HP USB Mouse; HP USB Optical Mouse <sup>12,14</sup>
<b>LAN Network Interface</b>	Integrated Intel® I219LM GbE LOM
<b>Available Software</b>	Absolute Persistence module; HP Connection Optimizer; HP Notifications; Zoom Rooms
<b>Security management<sup>20</sup></b>	Active Health (black box flight recorder); HP Dual Head Keyed Cable Lock Kit; Sure Start 3.0; Trusted Platform Module TPM 2.0 Embedded Security Chip shipped with Windows 10 (Common Criteria EAL4+ Certified)(FIPS 140-2 Level 2 Certified)
<b>Management features</b>	HP Image Assistant
<b>Power<sup>23</sup></b>	90 W external power adapter, up to 85% efficiency
<b>Dimensions</b>	6.5 x 6.5 x 4.4 in; 16.5 x 16.5 x 11.2 cm
<b>Weight</b>	3.46 lb; 1.57 kg
<b>Energy efficiency compliance<sup>24</sup></b>	ENERGY STAR® certified; EPEAT® 2019 registered <sup>24</sup> where applicable
<b>Environmental specifications<sup>25</sup></b>	Low halogen
<b>What's in the box<sup>26</sup></b>	HP Cable and Port Cover; HP Center of Room Control; HP DisplayPort™ to HDMI True 4K Adapter; HP Elite Slice G2 - Audio Ready with Zoom Rooms; HP VESA Plate; HP Video Ingest Module

## HP Elite Slice G2 - Audio Ready with Zoom Rooms

### Accessories and services (not included)

---

HP DM VESA Power Supply Holder Kit



Simplify cable management when mounting your HP Desktop Mini with the HP DM VESA Power Supply Holder Kit, which attaches to your HP Desktop Mini Security/Dual VESA Sleeve v2 (2JA3ZAA) to reduce cable clutter from the PC's power supply cable and brick.  
**Product number: 1RL87AT**

---

HP DisplayPort to HDMI True 4K Adapter



Make the most of the available ports on your HP Business Desktop or HP Workstation with the HP DisplayPort to HDMI True 4K Adapter, which converts your DisplayPort™ output to HDMI for quick and easy connection to a range of multimedia devices that can support 4K resolution and 60Hz refresh.  
**Product number: 2JA63AA**

---

HP ShareBoard



Transform your dry-erase whiteboard and markers into an online collaboration system and stream content live with meeting attendees all over the world with HP ShareBoard.<sup>1</sup>  
**Product number: 2TX38AA**

---

HP LD5512 4K UHD Conferencing Display



Inspire collaboration and productivity among small and medium groups with the extra-large HP LD5512 4K UHD Display. Show and share every detail in 3840 x 2160 resolution on a 55" diagonal screen with integrated dual stereo speakers.  
**Product number: 2YD85A8**

---

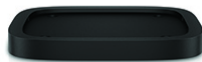
HP 8GB DDR4-2666 SODIMM



Boost the capabilities of your HP Business Desktop PC and improve system performance and application responsiveness with low-power, high-speed DDR4 memory from HP.  
**Product number: 3TK88AT**

---

HP VESA Plate



Mount your HP Elite Slice, Cover, and Modules to a fixed location on a desk or table with the HP VESA Plate, which allows them to be stacked and anchored with the 100 x 100 VESA pattern.  
**Product number: X8U74AA**

---

HP 5 year Next Business Day Onsite Hardware Support for Desktops



HP Care Pack

When hardware issues come up, the sooner you can get running again, the better. Have expertise at the ready with HP Hardware Next Business Day Onsite Service, and vastly improve your product uptime. With high-quality remote assistance or convenient onsite support available the next business day, help is there when you need it—so you can get back to work.  
**Product number: U7899E, UE334E**

---

# HP Elite Slice G2 - Audio Ready with Zoom Rooms

## Messaging Footnotes

<sup>1</sup> Not all features are available in all editions or versions of Windows. Systems may require upgraded and/or separately purchased hardware, drivers and/or software to take full advantage of Windows functionality. Windows 10 is automatically updated, which is always enabled. ISP fees may apply and additional requirements may apply over time for updates. See <http://www.windows.com>.

<sup>2</sup> Audio equipment or speakers are required and sold separately.

<sup>3</sup> Internet connection required and sold separately.

<sup>4</sup> Sold separately or as an optional feature.

<sup>5</sup> Available on HP Elite products equipped with Intel® 7th generation processors.

## Technical Specifications Footnotes

<sup>1</sup> Not all features are available in all editions or versions of Windows. Systems may require upgraded and/or separately purchased hardware, drivers, software or BIOS update to take full advantage of Windows functionality. Windows 10 is automatically updated, which is always enabled. ISP fees may apply and additional requirements may apply over time for updates. See <http://www.windows.com>

<sup>2</sup> In accordance with Microsoft's support policy, HP does not support the Windows 8 or Windows 7 operating system on products configured with Intel® and AMD 7th generation and forward processors or provide any Windows 8 or Windows 7 drivers on <http://www.support.hp.com>.

<sup>3</sup> Multicore is designed to improve performance of certain software products. Not all customers or software applications will necessarily benefit from use of this technology. Performance and clock frequency will vary depending on application workload and your hardware and software configurations. Intel's numbering, branding and/or naming is not a measurement of higher performance.

<sup>4</sup> Intel® Turbo Boost technology requires a PC with a processor with Intel Turbo Boost capability. Intel Turbo Boost performance varies depending on hardware, software and overall system configuration. See [www.intel.com/technology/turboboost](http://www.intel.com/technology/turboboost) for more information.

<sup>5</sup> Some functionality of this technology, such as Intel Active management technology and Intel Virtualization technology, requires additional 3rd party software in order to run. Availability of future "virtual appliances" applications for Intel vPro technology is dependent on 3rd party software providers. Compatibility of this generation of Intel vPro technology-based hardware with future "virtual appliances" is yet to be determined.

<sup>6</sup> 16 GB DDR4-2666 SDRAM: up to 32 GB thru option kit(s). Both configurations will be supported.

<sup>7</sup> For storage drives, GB = 1 billion bytes. TB = 1 trillion bytes. Actual formatted capacity is less. Up to 30 GB (for Windows 10) is reserved for system recovery software.

<sup>8</sup> (1) M.2 2230 PCIe for WLAN; (1) M.2 2280 PCIe for NVMe SSD.

<sup>9</sup> (1) USB 3.1 Type-C™: 60 W input.

<sup>10</sup> Wireless access point and Internet service required and sold separately. Availability of public wireless access points limited.

<sup>11</sup> HD content required to view HD images.

<sup>12</sup> Keyboards and mice are sold separately or as an optional feature.

<sup>13</sup> USB Business Slim Wired Keyboard: China only.

<sup>14</sup> HP USB Mouse: China only.

<sup>15</sup> Center of Room Control weight: 1.04 kg (2.3 lb); Dimensions: width (X) 30.17 cm (11.88 in), height (Y) 21.97 cm (8.65 in), depth (Z) 8.08 cm (3.17 in).

<sup>16</sup> Absolute agent is shipped turned off, and will be activated when customers activate a purchased subscription. Subscriptions can be purchased for terms ranging multiple years. Service is limited, check with Absolute for availability outside the U.S. The Absolute Recovery Guarantee is a limited warranty. Certain conditions apply. For full details visit: <http://www.absolute.com/company/legal/agreements/computrace-agreement>. Data Delete is an optional service provided by Absolute Software. If utilized, the Recovery Guarantee is null and void. In order to use the Data Delete service, customers must first sign a Pre-Authorization Agreement and either obtain a PIN or purchase one or more RSA SecurID tokens from Absolute Software.

<sup>17</sup> HP Support Assistant: requires Windows and Internet access.

<sup>20</sup> Firmware TPM is version 2.0. Hardware TPM is v1.2, which is a subset of the TPM 2.0 specification version v0.89 as implemented by Intel Platform Trust Technology (PTT). TPM is version 2.0. Hardware TPM is v1.2, which is a subset of the TPM 2.0 specification version v0.89 as implemented by Intel Platform Trust Technology (PTT).

<sup>23</sup> All power supplies are not available in every region.

<sup>24</sup> Based on US EPEAT® registration according to IEEE 1680.1-2018 EPEAT®. Status varies by country. Visit [www.epeat.net](http://www.epeat.net) for more information.

<sup>25</sup> External power supplies, power cords, cables and peripherals are not Low Halogen. Service parts obtained after purchase may not be Low Halogen.

<sup>26</sup> HP Cable and Port Cover and HP USB Type-C™ Extension Cable: only one can be installed.

<sup>27</sup> For full Intel® vPro™ functionality, Windows, a vPro supported processor, vPro enabled chipset, vPro enabled wired LAN card and discrete TPM 2.0 are required. See <http://intel.com/vpro>

Sign up for updates [hp.com/go/getupdated](http://hp.com/go/getupdated)

© Copyright 2019 HP Development Company, L.P. The information contained herein is subject to change without notice. The only warranties for HP products and services are set forth in the express warranty statements accompanying such products and services. Nothing herein should be construed as constituting an additional warranty. HP shall not be liable for technical or editorial errors or omissions contained herein.

Bluetooth is a trademark of its proprietor and used by HP Inc. under license. Intel, Core and Intel vPro are trademarks of Intel Corporation or its subsidiaries in the U.S. and/or other countries. USB Type-C™ and USB-C™ are trademarks of USB Implementers Forum. ENERGY STAR is a registered trademark of the U.S. Environmental Protection Agency. DisplayPort™ and the DisplayPort™ logo are trademarks owned by the Video Electronics Standards Association (VESA®) in the United States and other countries. All other trademarks are the property of their respective owners.

4AA7-6088, 2019 October 17

