

Wilderness Inventory Unit Index of Documents  
**Red Mountain OR-036-047, 10 total pages**

Page 1: Index Cover Sheet

[Page 2: Form 1 – Documentation of BLM Wilderness Inventory: Findings on Record](#)

[Page 5: Form 2 – Documentation of Current Wilderness Inventory Conditions](#)

[Page 8: Form 2 – Summary of Findings and Conclusion](#)

[Page 9: Wilderness Characteristics Overview–Red Mountain OR-036-047 Map 1 of 2](#)

[Page 10: Wilderness Characteristics-Land Treatments-Red Mountain OR-036-047 Map 2 of 2](#)

**Prepared by:**  
**U.S. Department of the Interior**  
**Bureau of Land Management**  
**Vale District Office**  
**100 Oregon Street**  
**Vale, Oregon 97918**



## **H-6300-1-WILDERNESS INVENTORY MAINTENANCE IN BLM OREGON/WASHINGTON**

### **APPENDIX B – INVENTORY AREA EVALUATION**

#### **Evaluation of Current Conditions:**

- 1) Document and review the existing BLM wilderness inventory findings on file, if available, regarding the presence or absence of individual wilderness characteristics, using Form 1, below.
- 2) Consider relevant information regarding current conditions available in the office to identify and describe any changes to the existing information (use interdisciplinary (ID) team knowledge, aerial photographs, field observations, maps, etc.), and document your findings on Form 2, below.

When Citizen Information has been submitted regarding wilderness characteristics, document the submitted materials including: date of Submission; Name of District(s) and Field Office(s) Affected; Type of material Submitted (e.g. narrative, map, photo). Evaluate any submitted citizen information regarding the validity of proposed boundaries of the unit(s), the existence of roads and other boundary features, the size of the unit(s), and the presence or absence of wilderness characteristics based on relevant information available in the office (prior BLM inventories, ID team knowledge, aerial photographs, field observations, maps, etc.)

Conduct field reviews as necessary to verify information and to ascertain current conditions. Reach conclusions on current conditions including boundaries, size of areas and presence or absence of wilderness characteristics. Fully explain the basis for each conclusion on form 2, including any critical differences between BLM and citizen information.

Document your findings regarding current conditions for each inventoried area. Describe how the present conditions are similar to, or have changed from, the conditions documented in the original wilderness inventory. Document your findings on Form 2 for each inventory area. Cite to or attach data considered, including photographs, maps, GIS layers, field trip notes, project files, *etc.*

Year: 2009 Unit Number/Name: OR-036-047 -- Red Mountain

**FORM 1 -- DOCUMENTATION OF BLM WILDERNESS INVENTORY  
FINDINGS ON RECORD**

**1. Is there existing BLM wilderness inventory information on all or part of this area?**

Yes        No   X   (If yes, and if more than one unit is within the area, list the names of those units.):

**NOTE:** In the late 1970's, a portion of OR-03-08-26, in part, was included in the BLM's late 1970's OR-2-74 WC inventory unit of Burns BLM District. Specifically, the present OR-036-047 inventory unit is nearly the same as what was identified in the late 1970's as BLM Burns District units OR-2-74N and OR-2-74Q. Official records for the units are retained at the Burns District office.

- A.) **Inventory Source(s) -- (X)** Denotes all applicable BLM Inventory files, printed maps, or published BLM Decision documents with information pertaining to this unit.

**SEE "NOTE", ABOVE.**

**Wilderness Inventories**

(X) 1978-1980 – BLM Wilderness Inventory Units OR-2-74N partially of OR-03-08-26, and OR-2-74Q partially of OR-03-08-26. See "**NOTE**", above, under "1."

- ( ) April 1979 – *Wilderness -- Proposed Initial Inventory – Roadless Areas and Islands Which Clearly Do Not have Wilderness Characteristics, Oregon and Washington*

**Wilderness Decision Documents**

- (X) August 1979 – *Wilderness Review – Initial Inventory, Final Decision on Public Lands Obviously Lacking Wilderness Characteristics and Announcement of Public Lands to be Intensively Inventoried for Wilderness Characteristics, Oregon and Washington* (green document)
- ( ) October 1979 – *Wilderness Review – Intensive Inventory - Oregon, Proposed Decision on the Intensive Wilderness Inventory of Selected Areas* (grey document)
- (X) March 1980 – *Wilderness Review – Intensive Inventory; Final Decisions on 30 Selected Units in Southeast Oregon and Proposed Decisions on Other Intensively Inventoried Units in Oregon and Washington* (orange document)
- ( ) November 1980 - *Wilderness Inventory – Oregon and Washington, Final Intensive Inventory Decisions* (brown document)
- ( ) November 1981 *Stateline Intensive Wilderness Inventory Final Decision, Oregon, Idaho, Nevada, Utah* (tan document)

**B.) Inventory Unit Name(s)/Number(s)**

OR-2-74N partially of OR-03-08-26, and OR-2-74Q partially of OR-03-08-26.

**C.) Map Name(s)/Number(s)**

- ( ) Final Decision – Initial Wilderness Inventory Map, August 1979, Oregon
- (X) Proposed Decision -- Intensive Wilderness Inventory of Selected Areas Map, October 1979, Oregon
- (X) Intensive Wilderness Inventory Map, March 1980, Oregon  
 (NOTE: the subunits of “N” and “Q” for 2-74 are not displayed on this map, but the map depicts the subunit areas as being affected by a decision.)
- ( ) Intensive Wilderness Inventory --Final Decisions Map, November 1980, Oregon
- ( ) November, 1981 *Stateline Intensive Wilderness Inventory Final Decision, Oregon, Idaho, Nevada, Utah* (tan document)

**D.) BLM District(s)/Field Office(s)**

Vale District/Jordan Resource Area

**2. BLM Inventory Findings on Record**

(Existing inventory information regarding wilderness characteristics (if more than one BLM inventory unit is associated with the area, list each unit and answer each question individually for each inventory unit):

**Inventory Source:** See above.

Unit#/Name	Size (historic acres)	Natural Condition ? Y/N	Outstanding Solitude? Y/N	Outstanding Primitive & Unconfined Recreation? Y/N	Supplemental Values? Y/N
OR-2-74N* partially of OR-03-08-26 **;	10,470	Y	N	N	N
OR-2-74Q*** partially of OR-03-08-26	590***	***	***	***	***
<b>TOTAL</b>	11,060				

\* See “**NOTE**”, above, under “1.”

\*\* Written records of OR-03-08-26 cannot be located in Vale District office.

\*\*\* Only a BLM Burns District working map depicting OR-2-74N and OR-2-74Q has been located; no determination documentation is found by Vale District search. Acreage is approximate, using present methods of measure. No finding of these criteria can be located by Vale District.

## H-6300-1-WILDERNESS INVENTORY MAINTENANCE IN BLM OREGON/WASHINGTON

### APPENDIX B – INVENTORY AREA EVALUATION

#### Evaluation of Current Conditions:

- 1) Document and review the existing BLM wilderness inventory findings on file, if available, regarding the presence or absence of individual wilderness characteristics, using Form 1, below.
- 2) Consider relevant information regarding current conditions available in the office to identify and describe any changes to the existing information (use interdisciplinary (ID) team knowledge, aerial photographs, field observations, maps, etc.), and document your findings on Form 2, below.

When Citizen Information has been submitted regarding wilderness characteristics, document the submitted materials including: date of Submission; Name of District(s) and Field Office(s) Affected; Type of material Submitted (e.g. narrative, map, photo). Evaluate any submitted citizen information regarding the validity of proposed boundaries of the unit(s), the existence of roads and other boundary features, the size of the unit(s), and the presence or absence of wilderness characteristics based on relevant information available in the office (prior BLM inventories, ID team knowledge, aerial photographs, field observations, maps, etc.)

Conduct field reviews as necessary to verify information and to ascertain current conditions. Reach conclusions on current conditions including boundaries, size of areas and presence or absence of wilderness characteristics. Fully explain the basis for each conclusion on form 2, including any critical differences between BLM and citizen information.

Document your findings regarding current conditions for each inventoried area. Describe how the present conditions are similar to, or have changed from, the conditions documented in the original wilderness inventory. Document your findings on Form 2 for each inventory area. Cite to or attach data considered, including photographs, maps, GIS layers, field trip notes, project files, *etc.*

## **FORM 2 -- DOCUMENTATION OF CURRENT WILDERNESS INVENTORY CONDITIONS**

**Unit Number/Name:** OR-036-047 -- Red Mountain

**Description of Current Conditions:** [Include land ownership, location, topography, vegetation features and summary of major human uses/activities.]

### **1. Is the unit of sufficient size?**

Yes   X              No           

**Description:** Refer to this inventory unit's associated Map 1 for its location. This 9,781 acre unit includes the original BLM units 2-74N and OR-2-74Q of the later 1970's. This OR-036-047 unit's size is due to a then identified road--separating these two original BLM units -- changing status to a motorized primitive trail (MPT) since that time because no mechanical maintenance has been performed on that route and BLM does not intend to perform mechanic maintenance on it. Difference in acreage from the late 1970's is apparently due to more accurate methods of determining size since that time.

The unit's boundaries consists of private and state property on its north side, County Road 203 on its east side, and by another road across public lands on its south and west sides. Route photos were taken associated with an interior route of this unit --- refer to the BLM Photo Points Map/Log and associated photos A through L of the 6318-00 route within this current Red Mountain OR-036-047 inventory unit. In the late 1970's it was apparently considered the route as the access for an existing communication site on the butte located north of Red Mountain, but the photos document that there is not a communication site/facility and confirms that the route leading to the top is a motorized primitive trail (MPT). The boundary roads of this inventory unit receive mechanical maintenance as needed to keep them passable on a regular and continuous (seasonal) basis.

### **2. Is the unit in a natural condition?**

Yes   X      No                       N/A           

**Description:** The unit includes two topographic features including Red Mountain and an unnamed butte to its north. These topographic features rise approximately 1,650 and 1,500 feet respectively in 1.5 miles. Elevations range from 4,547 to 6,204 feet. The central area of the unit contains topographic features which are sharply sloped. The outer perimeter of the unit is relatively flat. The vegetation is sagebrush and both native and nonnative grasses.

See this inventory unit's associated Map 1 for human imprints. There is one pipeline with a distance of approximately one mile to a water trough, and approximately 6.1 miles of 6 motorized primitive trails (MPTs) within the unit. There is nearly no visual evidence remaining of a half mile long abandoned segment of a vehicle route. When considered individually and collectively, the type and nominal extent of developments within the unit – relative to the unit's size and to the extent and orientation of varied natural features -- results in the unit appearing to be affected primarily by the forces of nature with the imprint of humans substantially unnoticeable to the average visitor.

**3. Does the unit have outstanding opportunities for solitude?**

Yes   X              No                       N/A           

**Description:** The unit is approximately 4 miles in length and varies in width from approximately 4 miles at its north and central areas of unit and tapers to a point on the southern end. The existing vegetation does not have adequate size, height or density to substantially contribute to outstanding opportunities for solitude. However, the generally central location within the unit of the two raised buttes -- both with some steep to very steep slopes, ridgelines and multi-directional drainages -- provide sufficient visual screening between visitors to an extent to provide for outstanding opportunities for solitude. The BLM late 1970's inventory determined that the OR-2-74N unit did not provide outstanding opportunities for solitude. The consensus of the present Jordan Resource Area's interdisciplinary team of staff specialists is that the 1970's finding was in error for reasons described above.

**4. Does the unit have outstanding opportunities for primitive and unconfined recreation?**

Yes                       No   X              N/A           

**Description:** There are opportunities for hiking, horseback riding, photography, general sightseeing, and hunting of common game species (primarily deer and chukar). Individually or in combination, these opportunities are not outstanding. Several topographic features are present, including Red Mountain, although there are no unique sights or attractions within the unit to specifically draw a recreating visitor to the unit. Thus, overall, the inventory unit does not lend itself to opportunities for outstanding primitive and unconfined recreation.

**5. Does the unit have supplemental values?**

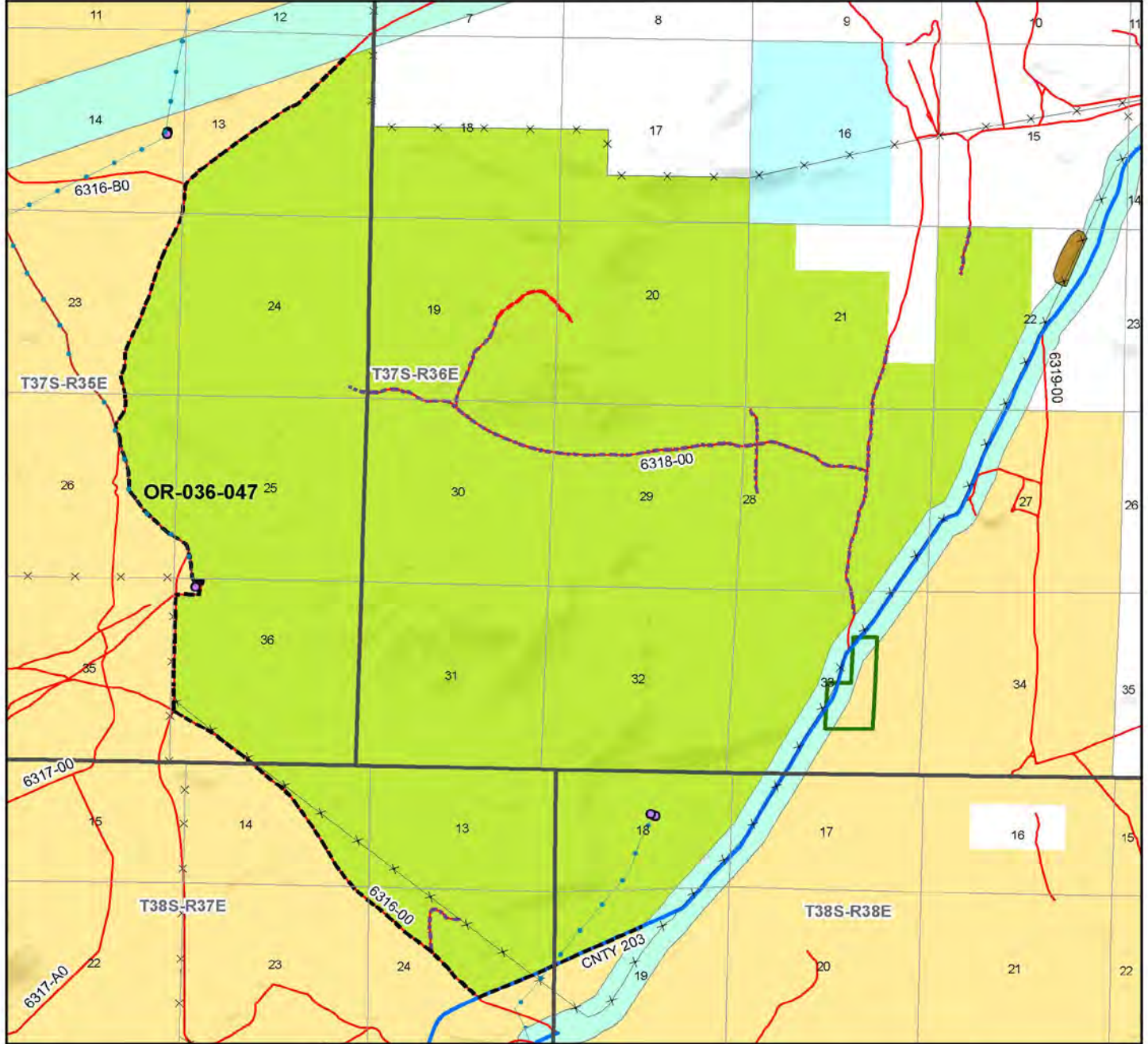
Yes                       No   X              N/A           

**Description:**





# Wilderness Characteristics - Overview Red Mountain - OR-036-047 - Map 1 of 1



**Legend**

- Developed Spring
- Wildlife Guzzler
- Earthen Reservoir
- Pipeline
- Trough
- Fence
- Storage Tank
- Surface Mining Disturbance
- Sage Grouse Lek
- Special Status Plant
- BLM Wild Char Inventory Unit
- Wilderness Study Area
- Mineral Material Site
- Road/Utility Right-of-Way
- Major Water Body

**Route Types - BLM Determination**

- Boundary Road
- Molozized Primitive Trail (MPT)
- Discontinued Use

**Routes - Outside Wild Char Unit**

- County
- Major Highway
- BLM Numbered & Other Routes

**Land Ownership**

- Bureau of Land Management
- State
- Private
- Other Federal Land

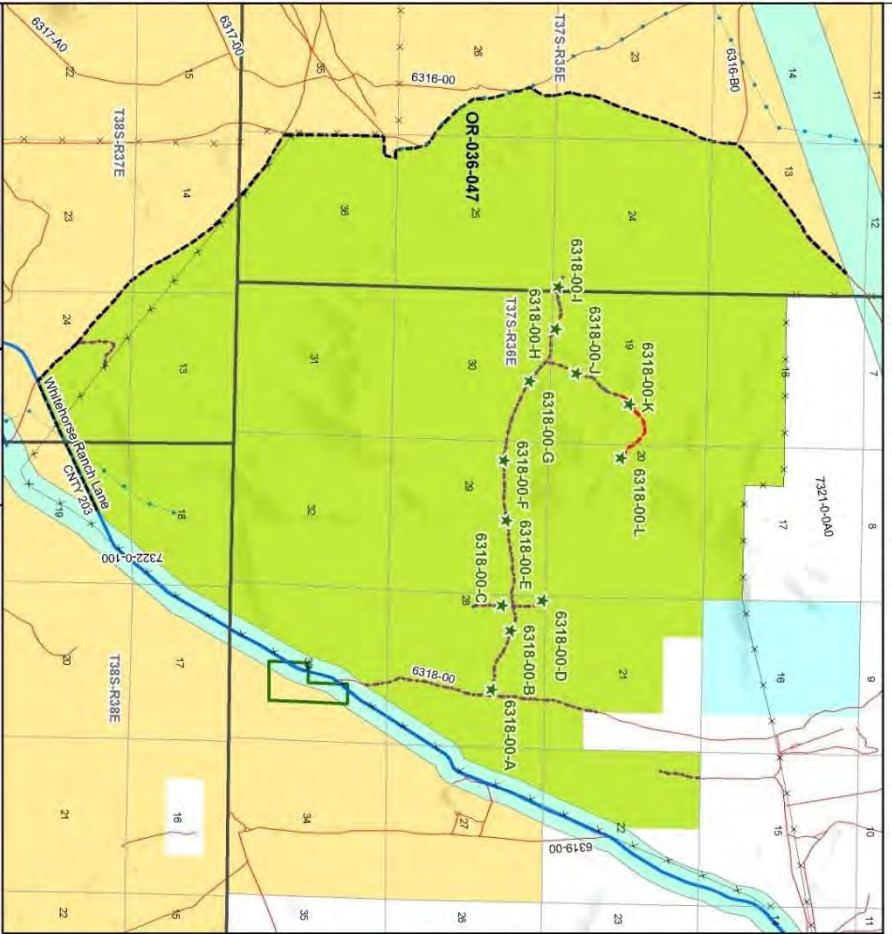
**U.S. DEPARTMENT OF THE INTERIOR**  
BUREAU OF LAND MANAGEMENT

**VALE DISTRICT**  
August 7, 2009

No warranty is made by the Bureau of Land Management as to the accuracy, reliability, or completeness of these data for individual or aggregate use with other data. Original data were compiled from various sources. This information may not meet National Map Accuracy Standards. This product was developed through digital means and may be updated without notification.

**--FINAL--**

**Wilderness Characteristics - BLM Photo Points  
Red Mountain - OR-036-047**



**Wilderness Characteristics - BLM Photo Points  
Red Mountain - OR-036-047**

PHOTO_LOCATION*	DIRECTION	PHOTO_TYPE	PHOTO_DATE	COMMENTS
6318-00-A	W	Route	7/1/2009	No evidence of construction or maintenance.
6318-00-A	E	Route	7/1/2009	No evidence of construction or maintenance.
6318-00-B	W	Route	7/1/2009	No evidence of construction or maintenance.
6318-00-B	E	Route	7/1/2009	No evidence of construction or maintenance.
6318-00-C	S	Route	7/1/2009	No evidence of construction or maintenance.
6318-00-C	N	Route	7/1/2009	No evidence of construction or maintenance.
6318-00-D	N	Route	7/1/2009	Spur ends
6318-00-D	S	Route	7/1/2009	No evidence of construction or maintenance.
6318-00-E	SW	Route	7/1/2009	No evidence of construction or maintenance.
6318-00-E	NE	Route	7/1/2009	No evidence of construction or maintenance.
6318-00-F	W	Route	7/1/2009	No evidence of construction or maintenance.
6318-00-F	E	Route	7/1/2009	No evidence of construction or maintenance.
6318-00-G	W	Route	7/1/2009	No evidence of construction or maintenance.
6318-00-G	E	Route	7/1/2009	No evidence of construction or maintenance.
6318-00-H	NW	Route	7/1/2009	No evidence of construction or maintenance.
6318-00-H	SE	Route	7/1/2009	No evidence of construction or maintenance.
6318-00-I	W	Route	7/1/2009	Spur ends.
6318-00-I	E	Route	7/1/2009	Back
6318-00-J	N	Route	7/1/2009	No evidence of construction or maintenance.
6318-00-J	S	Route	7/1/2009	No evidence of construction or maintenance.
6318-00-K	NE	Route	7/1/2009	No evidence of construction or maintenance.
6318-00-K	SW	Route	7/1/2009	No evidence of construction or maintenance.
6318-00-L	E	Route	7/1/2009	Vehicle turn around area.
6318-00-L	W	Route	7/1/2009	Back

Note: The BLM Wild Char PhotoPoints displayed on the map are labeled with their Photo Locations. The BLM Photo Log table shown above lists the photos taken at their respective Photo Locations. Multiple photos may be taken at each Photo Location. Scenery and Project Photo Type pictures have their photo names provided in the Comments field.

**Legend**

- Developed Sprung
- Wildlife center
- Eastern Reserve
- Phosphate
- Fence
- Mountaintop Site
- Scenic Highway
- Wilderness Study Area
- BLM Wild Char Inventory Photo Points

**Route Types - BLM Determination**

- Boundary Road
- new Modified Primitive Trail (MPT)
- Discontinued Line
- Routes - Canals Wild Char Trail
- County
- Major Highway
- BLM Numbered & Other Routes

**U.S. DEPARTMENT OF THE INTERIOR  
BUREAU OF LAND MANAGEMENT**

**VALE DISTRICT**  
September 23, 2009

**Wildhorse Ranch Lake**  
County Road 205

**Map of Oregon**  
Oregon WA

**Scale**  
0 50 100 Feet

**North Arrow**

**BLM Wild Char Inventory Photo Points**