

## Inspire the now, **teach the future**

Education Solutions from BenQ





Book a demo





Education Solutions



Interactive experiences



Immersive environments



Engaging information

|  |    |
|--|----|
| Education solutions.....                       | 4  |
| Projection.....                                | 6  |
| Interactive displays.....                      | 10 |
| InstaShow™ wireless presentation solution..... | 13 |
| Healthcare in the classroom.....               | 16 |
| Digital signage.....                           | 18 |
| Cameras.....                                   | 20 |
| Software solutions.....                        | 22 |
| Projector specifications.....                  | 29 |
| Interactive display specifications.....        | 30 |
| Digital signage specifications.....            | 33 |
| Camera specifications.....                     | 34 |
| Instashare specifications.....                 | 35 |

# BenQ Education Solutions

World-renowned for its educational technology solutions, which include interactive displays, projectors and collaboration devices.



For remote teaching  
**EZWrite**  
Page 24



For the IT office onsite & offsite:  
**Software - DMS / AMS**  
Page 26 & 27



For the school hall  
**LU9245W**  
Page 8



For corridors  
**Digital signage**  
Page 18

For primary classrooms  
LH890UST+ &  
Interactive displays  
Page 8 & 10



For the library  
Digital signage  
Page 18



For remote teaching  
Cameras  
Page 20



For the dinner hall  
Digital signage  
with X-Sign  
Page 18 & 23



For the auditorium  
LU9245W  
Page 8



For secondary classrooms  
Interactive displays  
Page 10

# Projection solutions



The latest projection technology from BenQ is breathing new life into legacy projection systems, transforming existing environments into new learning hubs.

# For small spaces and big ideas...



## EW800ST



Smart Interactive Classroom projectors allow teachers to break away from outdated methods and embrace teaching styles that encourage creativity and foster a better learning environment.

The EW800ST's built-in smart features ensure that your teachers can create the perfect blended educational environment. Start lessons quickly with instant wireless projection from either your smartphone, tablet, or laptop PC. Built-in apps, internet and cloud access allow you to make lessons engaging with a range of learning tools at your fingertips. No more spending time finding how to share lesson resources with the class, find it directly from the projector with no PC needed.

### Features

- Android based smart projector
- Built in apps, internet and cloud access
- Wireless projection through smartphone, tablet or PC
- High Brightness
- Vivid Colour Display
- Ecosystem Agnostic
- Integrated DMS software for remote access and over-the-air firmware updates

## MH856UST+



For throw-distances less than 0.5 metres, the MH856UST+ Ultra-short throw projector provides up to a 100" image for front of class teaching.

With optional pen and touch interactivity, the MH856UST+ features PointWrite technology for learning on any flat surface to create new learning opportunities within the classroom.

### Features

- Brightness 3500 Lumens
- Ultra-Short Throw Projector
- Compatible with network control via LAN
- Built-in 10W speaker

For **clarity** right to the  
**back of the room**



For **interactivity** that  
brings lessons to life



## LU9245W



Large space

At 7000 ANSI-lumens, the LU9245W is the brightest screen choice for large venue applications, including assembly halls, lecture theatres and gymnasiums.

Featuring BenQ's BlueCore laser engine, it delivers superior colour performance through a dual colour wheel system, support for 360° and portrait installation, and 24/7 operation with dramatically improved durability for diverse application opportunities.

### Features

- High brightness 7,000 ANSI Lumens
- Bluecore laser light source
- Rec.709 colour space 96%
- WUGXA resolution
- 7 lens options
- Lens shift
- 50" - 500" image
- 2 x HDMI
- HDBaseT
- Warranty 5 year / 20,000hrs

## LH890UST



Interactive

Combining interactive and BlueCore laser technology, the LH890UST encourages student participation and active learning with the power of touch.

The ultra-short throw projector produces large-scale uninterrupted high-quality pictures when mounted just inches from a wall, eliminating shadows and glare.

### Features

- Ultra-short throw
- 1080P resolution
- BlueCore laser technology
- Industry-leading dust proof design: BenQ Dust Guard™
- 4000 ANSI Lumen high brightness
- 10,000:1 high native contrast for crisp readability
- PointWrite pen and touch interactivity kit (option)



For high **brightness**  
and high **resolution**



## SH753+



High brightness

Keep your students engaged with the SH753+. Thanks to its 5000lm high brightness, the SH753+ ensures that content shines brightly whatever the light conditions.

The SH753+'s HD 1080p resolution offers subtle details, ultra-sharp readability and highly enhanced display capacity to create the most engaging presentations.

### Features

- 5000lm High Brightness
- Full HD Resolution
- Flexible Throw Ratio and the 1.5x Zoom for Efficient Upgrades
- Advanced Image Calibration



Pair your projector with BenQ's InstaShow™ device for instant presentations. Perfect for one click wireless presentation from multiple devices.

Find out more turn to page 13

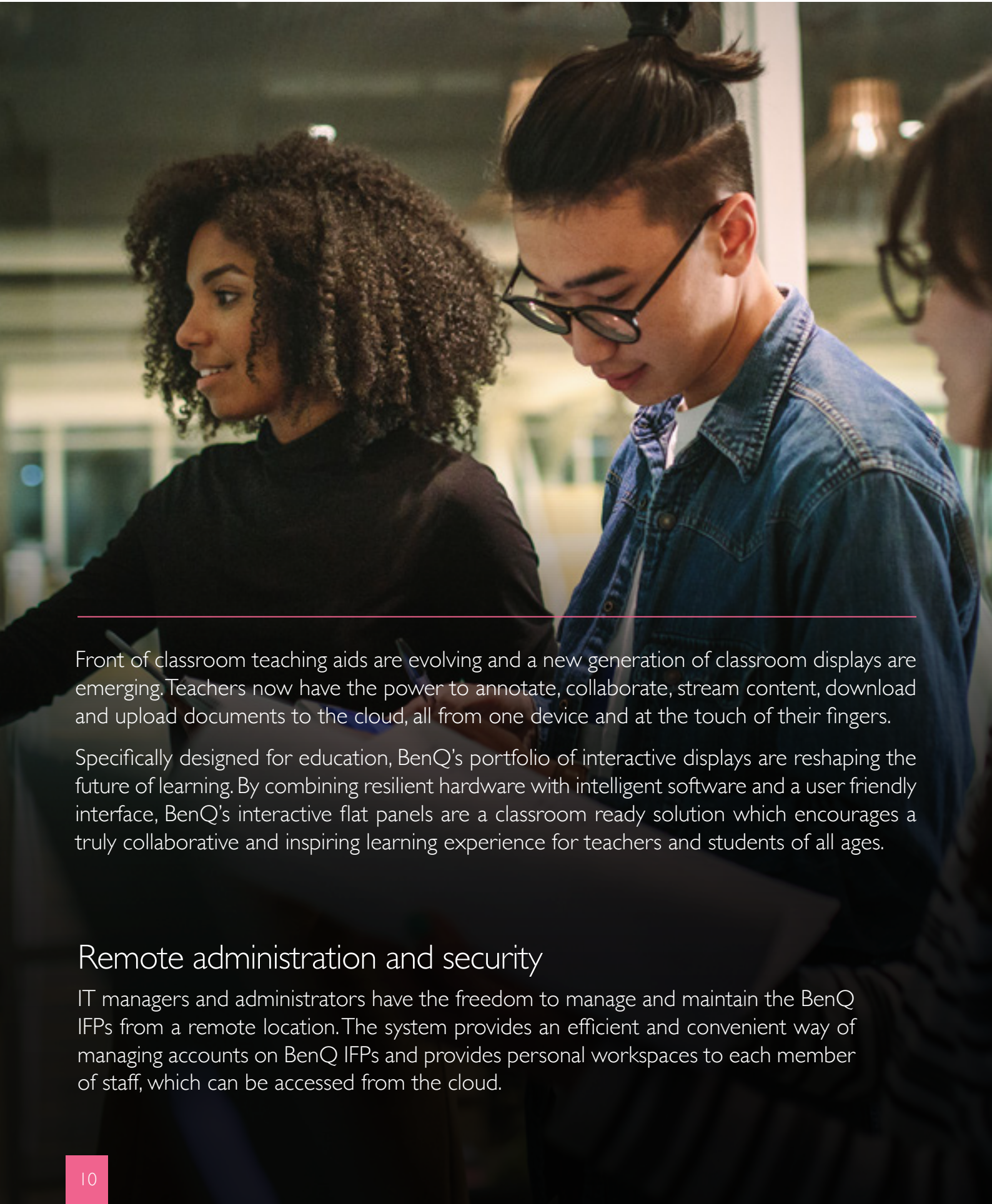


Monitor and manage all projectors across the entire site from one location when using BenQ's DMS software - saving time for busy network managers.

Find out more turn to page 22



# Interactive Displays



---

Front of classroom teaching aids are evolving and a new generation of classroom displays are emerging. Teachers now have the power to annotate, collaborate, stream content, download and upload documents to the cloud, all from one device and at the touch of their fingers.

Specifically designed for education, BenQ's portfolio of interactive displays are reshaping the future of learning. By combining resilient hardware with intelligent software and a user friendly interface, BenQ's interactive flat panels are a classroom ready solution which encourages a truly collaborative and inspiring learning experience for teachers and students of all ages.

## Remote administration and security

IT managers and administrators have the freedom to manage and maintain the BenQ IFPs from a remote location. The system provides an efficient and convenient way of managing accounts on BenQ IFPs and provides personal workspaces to each member of staff, which can be accessed from the cloud.

# RM Series

55" (RM5502K) 65" (RM6503) 75" (RM7503) 86" (RM8603)



55" 65" 75" 86"

## Introducing the new RM03 Series

Designed for remote and hybrid classrooms, our RM series of interactive displays are the perfect tool to facilitate dynamic teaching, wherever the students are learning from. Bursting with interactive and collaborative features, the BenQ RM series is suitable for Primary, Secondary, Further and Higher Education establishments.



New

### Germ-resistant Screen and Stylus

Each RM03 interactive display features an anti-bacterial nano-ionic silver coating to allow students to collaborate safely. We've now also added this coating to our styluses to provide further classroom protection.



New

### EZWrite 6 Interactive Whiteboard Software

BenQ's redesigned whiteboard software lets you bring lessons to life. EZWrite 6 provides a consistent and intuitive user experience across all platforms. Lessons look the same on an interactive display, notebook, tablet, or phone, allowing everyone to join the conversation. Made for hybrid learning.



### Seamless Collaboration with InstaShare 2

Empower students to wirelessly present their ideas in class without the hassle of cables. InstaShare 2 lets up to nine students simultaneously cast their device screens onto the interactive display.



### Eye-Care Solution

Enhanced eye-care has always been at the heart of BenQ's displays. The RM series features an Anti-Glare Coating together with Flicker-Free and Low Blue Light.

### X-Sign Broadcast

This easy-to-use content creation and communication program can broadcast the school logo, parents evening information or emergency updates to one or all of our displays across campus at the touch of a button.



### Kahoot!

With Kahoot!, teachers can instantly create polls, learning games, and team competitions to keep students engaged and focused. Available on every BenQ interactive display through the BenQ Suggests app store.



BenQ TÜV-certified Low Blue Light Technology



BenQ TÜV-certified Flicker-Free Technology



BenQ Anti-Glare Display Technology

### New

4K Android OS • Voice control

### Includes

Wall bracket • Remote control • Pens



### Oak National Academy Resources

Access over 10,000 resources including videos, lesson slides, and worksheets directly from the Android application in the BenQ Suggests store. Make real-time annotations and collaborate via the floating tool.

### Features

- 4K resolution
- 20-point multi-touch
- 32GB storage
- 2 x 16W speakers
- Multiple connectivity inputs
- Low power consumption
- Cross-platform agnostic
- WiFi compatible
- EZWrite software

### Additional benefits

- 3 year warranty (5 years on 65", 75", 86")\*
- Training
- Service and support

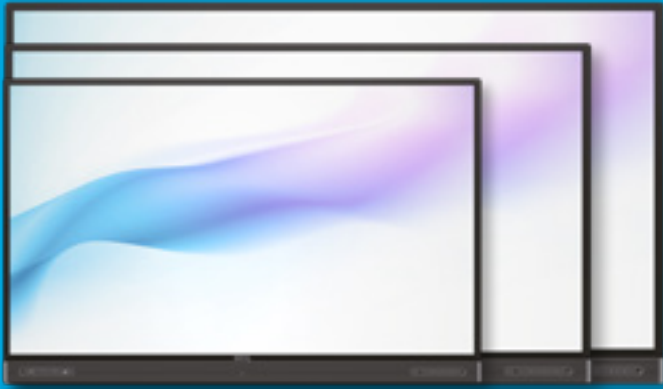
\*On registration

# RP Series

65" (RP6502)

75" (RP7502)

86" (RP8602)



65" 75" 86"

## Hassle-free learning experiences

For education institutions looking for an interactive display with advanced features, the premium RP Series from BenQ creates an engaging and hassle-free learning experience, with the added reassurance of monitoring a healthy environment. Featuring all the benefits of BenQ's exclusive software for collaborative learning environments, the RP Series incorporates BenQ's HealthCare+ technology for education.



### NFC Cards

Provide hassle-free access to IFPs with NFC cards. Using staff ID cards or OAuth technology to embed personal data into NFC cards, login occurs automatically when presented against the screen sensor and instantly loads personalised workspaces.



### Handwriting Recognition with Fine IR Plus

Zero Bonded technology and Fine IR Plus, ensure the most natural handwriting experience and character recognition ever.



### X-Sign Broadcast

This easy-to-use content creation and communication programme can broadcast the school logo, parents evening information or emergency updates to one or more of the BenQ Premium Series displays at the click of a button.



### DMS (Device Management Solution)

Control service updates and device management across single or multiple displays from a remote location via a local network or the Cloud.



### Healthcare+ for education

BenQ's exclusive HealthCare+ technology intelligently monitors the air quality of its environment using an Air Quality Sensor, alerting the teacher to any important changes in the classroom environment. It features a Germ-Resistant Screen to instantly kill germs on the screen surface and protects the eyes of its viewers with its Smart Eye-Care solution.

Air Quality Sensor



Germ-Resistant



Smart Eye-Care Solution



### Oak National Academy Resources

Access over 10,000 resources including videos, lesson slides, and worksheets directly from the Android application in the BenQ Suggests store. Make real-time annotations and collaborate via the floating tool.

## Includes

Wall bracket • Remote control • Pens

## Features

- 4K resolution
- Storage
- 20-point multi-touch
- NFC card reader
- Wall bracket
- Remote control
- Multiple connectivity inputs
- 2x 16W speakers
- 15w subwoofer
- WiFi compatible
- Low power consumption
- HealthCare+
- EZWrite software
- EZWrite Live
- Free Oktopus License
- InstaShare compatible
- Intelligent handwriting
- Floating toolbar
- Tool box: (Incl: Calculator, Geometry, Timer & Stopwatch, Draw Lots, Score Board, Buzzer)
- MS Office compatibility
- Data-to-Go
- Video recording
- Cross platform agnostic
- AMS
- DMS
- Training
- Service and support
- 5 year warranty on registration

# InstaShow™ Plug & Play Wireless Presentation Solution



Utilise InstaShow™ for lecture rooms, assembly halls or gymnasium technology to transform these spaces and save costs on additional wiring.

Speak to us and request a free trial of InstaShow

Future-proofed for tomorrow's interactive lessons and meetings, the InstaShow™ WDC20 is compatible with any OS or hardware platform, going beyond PC/laptop compatibility to support any iOS or Android mobile device.

Operating on 802.11ac high-speed WiFi with automatic channel selection, InstaShow™ ensures fast, secure wireless connections to the display by simply plugging into the HDMI and USB ports of the laptop. Starting presenting wirelessly at the touch of a button with no downloads. The InstaShow™ features trustworthy security protection with AES 128-bit security encryption and WPA2 authentication protocol.

## Hardware



### WDC10 & WDC10C

- Connects up to 16 buttons simultaneously
- HDMI + USB cable connectivity
- USB-C Cable Connectivity (WDC10C)

### WDC20 & WDC20C

- Connects up to 32 buttons simultaneously
- USB & HDMI cable compatibility
- Active split-screen collaboration for up to nine devices
- Compatible with InstaShare app, available for Android and iOS devices
- USB-C Cable Connectivity (WDC20C)

## InstaShare Software

Encouraging use of personal devices without connectivity ports, the InstaShare software is compatible with PCs, tablets, and smartphones enabling users to mirror, annotate and save digital content onto front-of-class display technology.

## Features

### Hardware - WDC10 & WDC20

- AES 128-bit security encryption
- WPA2 authentication protocol
- True plug & play
- 'No driver software' for buttons
- Trustworthy Security Protection
- InstaVideo
- Auto channel search
- Wireless 802.11ac
- Video & audio sharing
- Assured performance
- Extended users
- Simple pairing
- Optimal intelligent resolution matching

### InstaShare Software

- Two-way mirroring
- Two-way touch control
- 9 split screen presenting
- Central control

# InstaShare Button



## Engaging lessons are just a click away

The InstaShare Button is a plug-and-click solution to instantly share your screen, camera feed or files from anywhere in the room.

Ideal for hybrid learning environments and facilitating collaboration in the classroom, the InstaShare Button works with our InstaShare 2 wireless screen sharing software and allows up to nine devices to cast content simultaneously on a BenQ display. This makes it easy to display multiple shared screens for a side-by-side view of everyone's contributions.



### USB Type-C connectivity

USB Type-C connector enables a one-cable plug-and-play solution that works seamlessly with Windows notebooks, MacBooks and Chromebooks.



### No software required

With no software to download presentations can begin instantly to enable smooth discussions without disruption.



### Wireless design

Its wireless design eliminates the fuss of passing around cables so everyone can fully focus on the discussion.





# HealthCare+

## Wellbeing for education

Air Quality Sensor

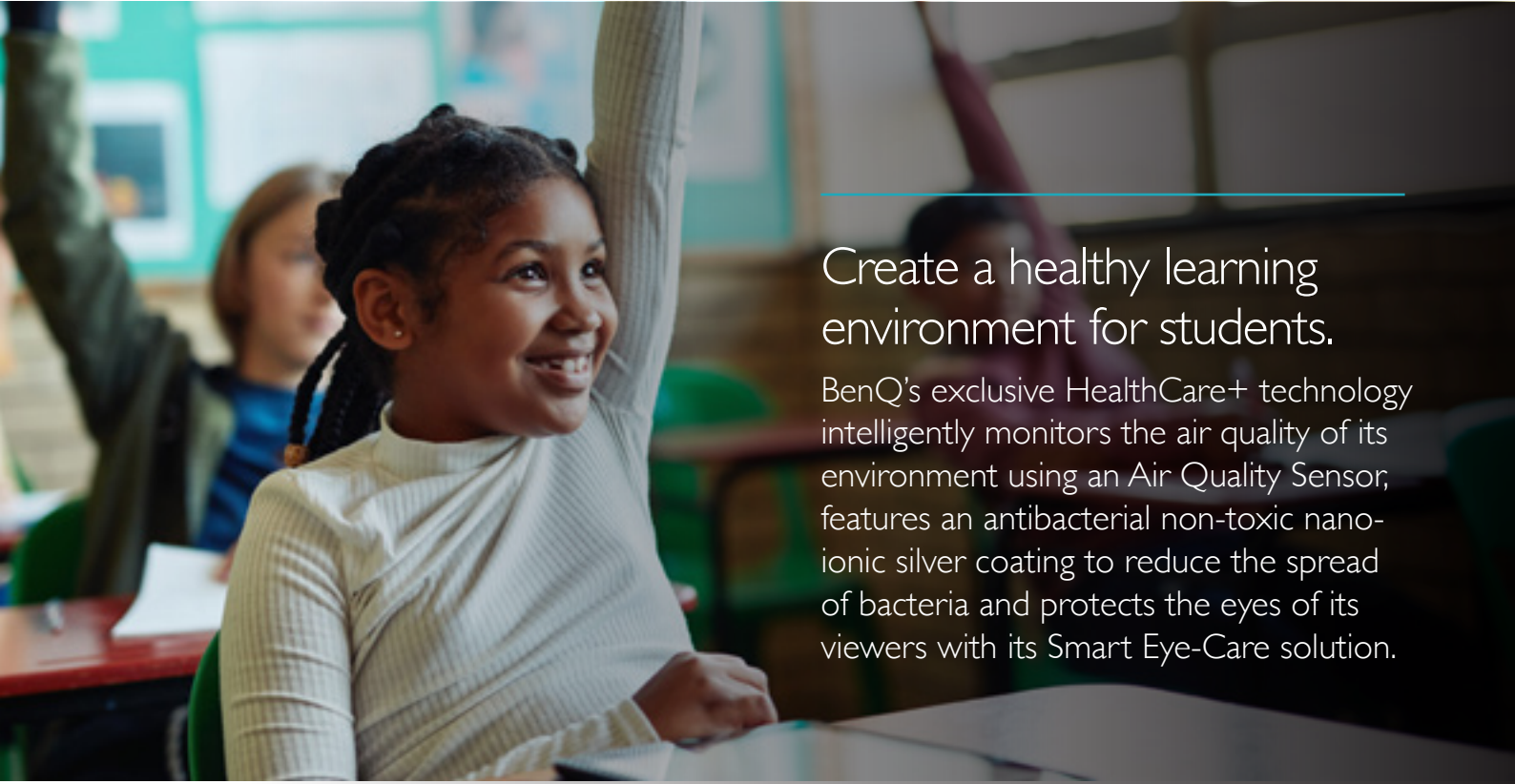


CO<sub>2</sub> Level Indicator Inside

Antibacterial



Smart Eye-Care Solution



Create a healthy learning environment for students.

BenQ's exclusive HealthCare+ technology intelligently monitors the air quality of its environment using an Air Quality Sensor; features an antibacterial non-toxic nano-ionic silver coating to reduce the spread of bacteria and protects the eyes of its viewers with its Smart Eye-Care solution.

## Fresh air for fresh minds

BenQ Air Quality Sensors provide real-time data on key environmental parameters by detecting temperature, humidity, and monitoring PM 2.5 and CO<sub>2</sub> concentration levels. The sensors remind teachers to adopt necessary mechanisms to keep the environment at an ideal status, ensuring that students remain highly focussed, while enjoying a much healthier learning environment.







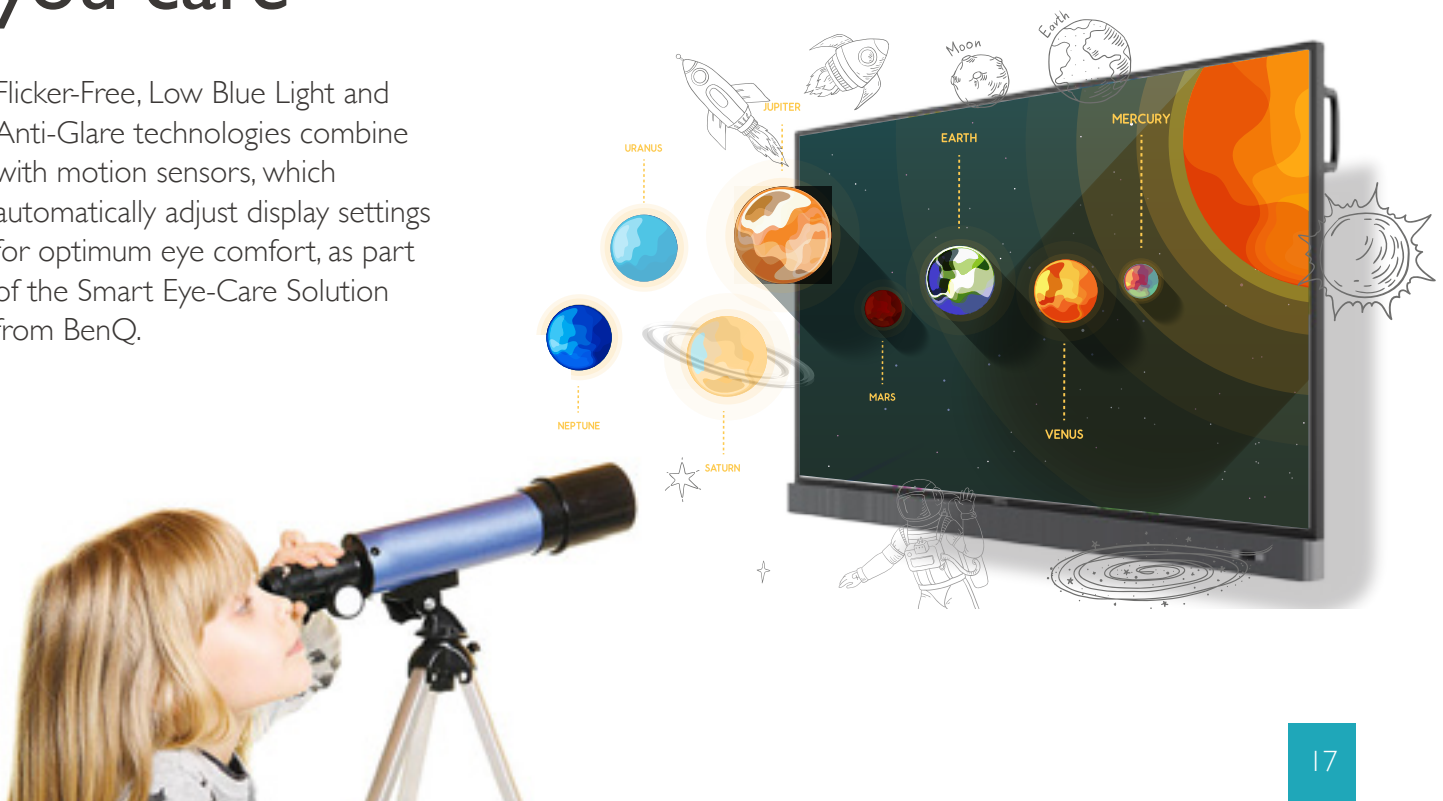
## Ensure the learning is contagious

An antibacterial, non-toxic, nano-ionic silver coating prevents the spread of bacteria, blocking the spread of germs. So rest assured that however hands-on the lesson, knowledge will be the only takeaway.



## Eye-care because you care

Flicker-Free, Low Blue Light and Anti-Glare technologies combine with motion sensors, which automatically adjust display settings for optimum eye comfort, as part of the Smart Eye-Care Solution from BenQ.



# Digital Signage



Wayfinding, digital menu, and information boards are vital for rapid messaging in academic spaces, improving communication and efficiency across the campus. BenQ offers a digital signage portfolio to cater for educational facilities of all shapes and sizes.

# Digital menus



## BH280 I

The unique long-structure of the BH280 I bar-type display is specially designed to encourage signage in areas restricted in space. Crafted with an exquisite 28" stretched screen, the BH280 I can be seamlessly integrated into small and narrow spaces in portrait or landscape orientation.

The BH280 I's ultra-bright 1000 nit screen ensures images remain sharp and crisp even under ambient light. Moreover, the BH280 I also features internal speakers and USB plug-and-play support, so you can deliver impactful audiovisual messages in compact spaces with minimal installation.

### Features

- High brightness at 1000 nits
- Unique formation
- DMS compatible
- Plug-and-play
- 24/7 non-stop operation

# Information boards



## ST4302S

Transform your school information boards with with the 43" 4K ST4302. Its built-in Android media player; combined with BenQ's exclusive X-Sign and DMS software, provides the perfect solution for quick content creation and distribution.

Connect to the site network and use BenQ's X-Sign content creation software programme to create, manage and schedule content.

### Features

- Quick content creation
- Over 140 built-in templates
- 4K resolution
- Centralised control
- USB, LAN & Cloud content distribution options
- Built-in Android media player

BenQ's signage solutions feature its exclusive X-Sign software for content creation, sending messages, alerts and media to all your screens simultaneously and remotely. **Find out more on page 22**



# Cameras

BenQ's latest range of cameras integrate perfectly with our interactive displays to create a seamless blended learning environment.

## DVY32



Perfectly engineered to provide the best experience for large rooms, the DVY32 comes equipped with a 4K ultra-HD, wide-angle camera to provide an incredible 120° field of view.

Coupled with the DVY32's AI-powered auto framing software, teachers can be sure that every student is on screen and can participate fully.

The DVY32 has also received Zoom Room certification. With more schools and colleges embracing a blended learning model, many have designed and installed conference rooms which seamlessly integrate directly with Zoom. This allows teachers to easily set up hybrid lessons at the touch of a button, providing a PC-free and wireless solution.

### Features

- Zoom certified
- High-performance Sony image sensor
- 120° wide field of view with 5x digital zoom
- AI-powered auto framing
- Omnidirectional mics for up to 8m (26ft)
- H.265 video encoding

## DVY31



## DVY23



This Zoom™ Certified Full HD Business Webcam is designed for small to medium teaching spaces and features a 1080p HD camera with a 92° wide field of view. Two omnidirectional microphones provide crystal clear audio, ensuring that voices can be clearly heard from up to five metres away.

This allows teachers to present lessons more dynamically, naturally moving around the room to without having to worry about audio quality levels. The inbuilt noise suppression software ensures teachers can still be heard perfectly, no matter how active the classroom is.

### Features

- 4K UHD video
- AI-powered auto framing
- 126° field of view
- Clear sound capture from up to 8m
- Ambient noise elimination

The DVY23 is a premium pan/tilt/zoom camera, purpose-built for large spaces such as lecture halls, ensuring that every attendee present is on screen and in focus.

Make sure every angle is covered so every student can participate equally with BenQ's premium conference camera the DVY23. With its pan and tilt functionality coupled with 20x optical zoom, you can be sure that students won't miss a thing.

### Features

- Ultra-detailed 20x optical zoom
- Pan: ±170° | Tilt: -30° to +90°
- Video outputs: USB 3.0, HDMI, 1GbE with PoE, 3G-SDI
- Streaming: RTSP and RTMP
- Control: RS232, RS422, RS485, LAN, and remote control

# Exclusive BenQ Software



BenQ's exclusive software is designed to help teachers and IT professionals keep learning sessions engaging and safe. With the help of remote facilities, single or multiple displays can be monitored, maintained and sent updates, as well as providing lecturers and teachers with hassle-free access to documents and files saved on the cloud.

# X-Sign & X-Sign Broadcast

Hassle-free content creation, scheduling and management software

Communication is key to ensuring the successful operation of any campus. By removing the complexity from sending messages, the BenQ X-Sign software range is designed to improve communication by wirelessly broadcasting announcements directly to your display technology.

Built into BenQ's display panels, the software lets you create, manage and broadcast classroom content, digital menu boards, wayfinding and emergency alerts from any device. Creating an engaging and safe learning environment has never been easier.



## X-Sign Broadcast



Integrated into BenQ's interactive displays.



Send scrolling text or full screen alerts  
Send informative ticketing alerts across the top and bottom of the screen, or as full screen messages.



Access and share saved content  
Easily share content that's stored either locally or in the cloud, with support for text, images, videos, office files, YouTube and more.

### Featured in X-Sign Broadcast and X-Sign

- Free software
- Easy-to-manage system
- Multimedia support
- Access from any Android smart device or X-Sign-compatible display
- Send messages in an instant
- Schedule messages
- Cloud or LAN connectivity
- Remote management
- Single or multiple display grouping function
- Administrator management
- Time saving

## X-Sign



Integrated into BenQ's digital signage solutions.



X-Sign Player  
Playback software built into every BenQ digital signage display.



140 templates  
Design your own content or choose and modify from over 140 layout templates, ensuring personalised content is delivered across your establishment.

### Multimedia support

X-Sign makes it easy to share content that's stored either locally or in the cloud, with support for text, images, videos, office files, YouTube and more.



Google Docs



OneDrive



YouTube

# EZWrite

Real-time whiteboarding across platforms and spaces



For in lesson collaboration, BenQ's EZWrite software streamlines classroom discussions, enabling academics and students to easily share ideas, notes and opinions as if they are annotating on the same whiteboard, regardless of where they are.

With cloud storage and collaboration tools, EZWrite offers a plethora of teaching tools that will help every class go smoothly and create a better learning environment.



## Teaching assistance

Whiteboarding, cloud brainstorming tools and sticky notes encourage collaboration and makes it easy for students to collect, categorise, edit and share notes between the display and mobile devices.



## Instant access to the cloud

Real-time annotation enables teachers and students to interact simultaneously.



Google Drive



OneDrive



Dropbox



## Floating toolbar

Floating Tool lets academics easily switch between a wide variety of writing tools, make notes and draw directly on top of any source, app, image, document or video.



Sticky notes



Palm eraser



Screen capture



Screen record



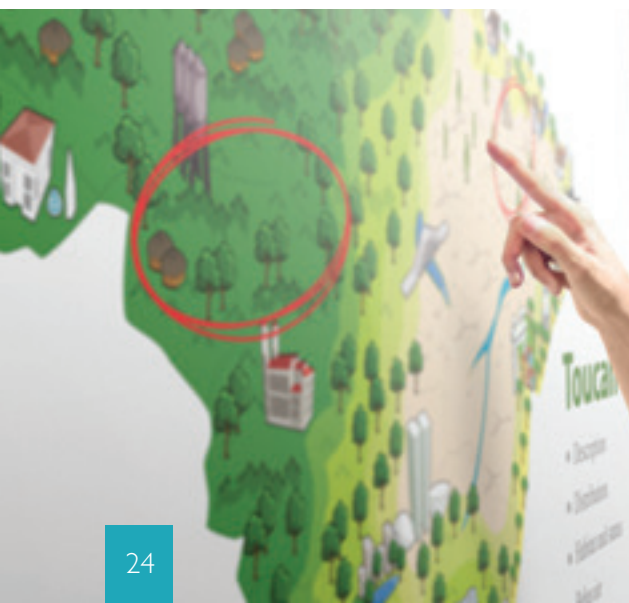
Personalised background



Brush mode



Handwriting recognition





# EZWrite

Bridging the gap between the classroom and learning remotely



Enabling academics to connect with up to 32 students in remote locations from personal devices in real-time. Requiring no download or installation, EZWrite is a cloud based software compatible with any device using Chrome, Firefox or Safari web browsers.



## Real-time cloud whiteboard

Share documents and mixed media instantly and encourage group annotation from tablets, desktop computers, laptops and mobile devices from a secure workspace.



## Real-time annotation

Real-time annotation enables teachers and students to interact simultaneously.



## Present using video conferencing

With integrated video conferencing facilities, the sessions simulates the classroom experience, further boosting interactivity.



## Record sessions

Record the collaborative sessions to use again and again.



## Access existing whiteboards

Pick up where you left off on the last session by loading existing whiteboards.



## Use templates

Choose from 15 pre-installed templates or customise your own to suit your needs.



## Zero cost

Free web based software installation



## Cross-platform

Windows, Mac, iOS, Android supported



## Admin control

Admin settings lets teachers take control of the class by turning on/off students' editing-access of the cloud whiteboard.

# DMS (Device Management Solution)

A comprehensive management tool



BenQ's exclusive management support system leaves IT departments and school administrators feeling confident knowing their technology, staff and students can be safely monitored onsite or from afar.



Power On/Off



Monitor power consumption



Cross-Subnet device control



Task management



Switch inputs remotely



Customised command



Identification



## DMS Local

DMS Local enables remote and centralised management of multiple displays by IT administrators/technicians via a local network.

## DMS Cloud

For network managers looking after multiple sites, DMS Cloud lets you control, maintain and service all displays from a remote offsite location via a web browser interface.

# AMS (Account Management Solution)

Effortless control over user profiles



The Account Management System (AMS) from BenQ allows teachers and lecturers to move freely between classrooms and have hassle-free access to personal documents and settings from any from any BenQ interactive display onsite.



## Easy set up

Personal preferences including home screen layout, shortcuts, and app settings can be set within the AMS software, which then loads instantly every time you access your work spaces from any AMS enabled IFP in your establishment, giving true follow me personalisation of your class display.



## Pair cloud storage accounts

AMS also lets you pair personal cloud storage to gain access to saved files



## NFC cards

Provide hassle-free access to IFPs with just a touch of an NFC card\* or compatible staff ID cards.

\*RP Series only



## IT / Administration

Additionally, AMS also provides an effortless way for IT staff to create and manage AMS accounts taking ease of classroom display management to a whole new level.



# InstaShare 2



Enjoy smooth presentations and an interactive screen sharing experience on any device.

Up to nine students can share their screens simultaneously using InstaShare 2 allowing teachers to create collaborative lessons at the touch of a button. InstaShare 2 is the ideal hardware to facilitate Bring Your Own Device (BYOD) lessons thanks to its seamless integration with Windows, macOS, iOS, Android, and Chrome OS devices.

Teachers and students can share different types of content with no software download required. Teachers can easily switch between displaying screen shares, teaching resources or cast their screen to every student's device for real time collaboration. To keep your class focused, InstaShare 2 also features a Do Not Disturb mode which keeps important information on the screen and blocks further mirroring requests for maximum concentration.



Wireless Screen Sharing



Ecosystem Agnostic



Allows up to 9 students to share simultaneously with smart split screen



# Projector Specification

| Model                               | MW632ST  | MH856UST+   | LU9245W  | LH890UST   | MH760   |
|-------------------------------------|--|---|--|--|---|
| <b>Technology</b>                   | DLP Dark Chip 3  | DLP Dark Chip 3   | DLP Dark Chip 3  | DLP Dark Chip 3  | DLP Dark Chip 3   |
| <b>Resolution</b>                   | WXGA 1280x800  | Full HD (1920x1080)   | WUXGA (1920x1200)  | FullHD (1920x1080)   | Full HD (1920 x 1080)   |
| <b>Brightness</b>                   | 3,200 Lumens UHP   | 3,500 Lumens UHP  | 7,000 Lumens Laser   | 4,000 Lumens Laser   | 5,000 Lumens UHP  |
| <b>Contrast ratio</b>               | 13,000:1   | 10,000:1  | 3,000,000:1  | 3,000,000:1  | 3,000:1   |
| <b>Throw ratio</b>                  | 0.72-0.87  | 0.33 : 1  | Optional lens  | 0.23 : 1   | 1.15-1.5  |
| <b>Zoom ratio</b>                   | 1.2x   | Fixed   | Optional lens  | Fixed  | 1.3x  |
| <b>Lens shift</b>                   | -  | Vertical (+/-4%)  | Horizontal/Vertical Manual   | -  | Vertical Manual   |
| <b>Noise level(Normal/Eco mode)</b> | 33/28 dBA  | 34/29 dBA   | 36/34 dBA (eco)  | 35/32 dBA  | 36/33 dBA   |
| <b>Light source life (hours)</b>    | 10,000 hours (LampSave)<br>6,500 hours (Economic)<br>6,000 hours (SmartEco)<br>4,500 hours (Normal)          | 12,000 hours (LampSave)<br>10,000 hours (SmartEco)<br>8,000 hours (Economic)<br>5,000 hours (Normal)  | Laser 20,000 hours (Normal)  | Laser 20,000 hours (Normal)  | 4,500 hours (SmartEco)<br>3,500 hours (Economic)<br>2,500 hours (Normal)  |
| <b>Speaker</b>                      | 10W x 1  | 10W x 2   | 10W x 2  | 10W x 1  | 10W x1  |
| <b>Resolution supported</b>         | Up to UXGA (1600 x 1200)   | Up to WUXGA_RB (1920 x 1200)  | Up to WUXGA_RB (1920 x 1200)   | Up to WUXGA_RB (1920 x 1200)   | Up to WUXGA_RB (1920 x 1200)  |
| <b>Input connectivity</b>           | 1 x D-sub 15 (Sharing Component), 1x USB Type A (power supply 1.5 A), Mini USB Type B (maintenance+)         | 2 x D-sub 15 (Sharing Component), 1x USB Type B (maintenance), 1 x Mini USB Type B (Point Write + page front/back), 1 x USB Type A (5V/2A power supply) | 2 x D-Sub 15, 1 DVI-D (HDCP), 1 x RGBHV (compatible YUV), 1 x HD Base T seperated from LAN, 1 x USB Type A (power supply WIDI Compliant), 1 x USB Type B (maintenance)                   | 1 x D-sub 15, 2 x Mini USB Type B (Point Write + maintenance), 1 x USB Type A (5V/1.5A power supply), WIFI Ready                               | 1 x D-Sub 15, 1 x USB Type A (power supply 1.5 A), Mini USB Type B (maintenance+ page front/back)   |
| <b>Output connectivity</b>          | 1 x RCA, 1 x S-Video, 2x HDMI (1.4a) including 1 MHL   | 1xRCA, 1x S-Video, 2 x HDMI 1.4 (1 MHL)   | 2 x HDMI 1.4 (including 1 MHL), 1 x composite (RCA)  | 1 x RCA, 1 x S-Video, 2 x HDMI 1.4 (1 x MHL)   | 1 x RCA, 1 x S-Video, 2x HDMI 1.4 (1 MHL)   |
| <b>Audio input</b>                  | 1 x mini jack 3.5, 1x RCA (L/R)  | 1 x mini jack 3.5, 1x RCA (L/R)   | 1 x mini jack 3.5, 2x RCA (L/R)  | 1 x mini jack 3.5, 1x RCA (L/R)  | 1 x mini jack 3.5, 1 x RCA (L/R)  |
| <b>Audio output</b>                 | 1 x mini jack 3.5  | 1 x mini jack 3.5   | 1 x mini jack 3.5  | 1 x mini jack 3.5  | 1 x mini jack 3.5   |
| <b>Communication port</b>           | RS232 (DB-9pin)  | LAN Control x 1 (Sharing component) Crestron eControl and Crestron RoomView, AMX Device Discovery - RS232 (DB -9pin)                                    | LAN Control x 1 not share with HD Base T, Crestron e-control and Crestron RoomView, PJ Link - 2 x RS232 (DB-9pin) In/Out - Trigger 12V (Mini Jack 3.5) - 2 x wired remote control In/Out | LAN Control x 1 (Sharing component) Crestron eControl and Crestron RoomView, AMX Device Discovery - RS232 (DB-9pin)                            | LAN Control x 1 (Sharing component) Crestron eControl and Crestron RoomView, AMX Device Discovery - RS232 (DB-9pin) - Trigger 12V (Mini Jack 3.5) |
| <b>Dimensions (WxHxD)</b>           | 287 x 114 x 233 mm   | 287.5 x 206.9 x 373.3 mm (with mirror) / 287.5 x 130.2x 373.3 mm (without mirror)   | 525 x 216 x 470 mm   | 400 x 164 x 502 mm   | 411.4 x 118.4 x 267.5 mm  |
| <b>Weight</b>                       | 2.6 Kg   | 5 kg  | 24 Kg  | 9.06 kg  | 4.9 Kg  |
| <b>Power consumption (Normal)</b>   | 305W   | 320W  | 600W   | 358W   | 500W  |
| <b>Lamp part number</b>             | 5J,J9V05.001   | 5J,JDT05.001  | No lamp laser light source   | No lamp laser light source   | 5J,JFG05.001  |
| <b>Other features</b>               | HDMI Signal Power On ±30° Vertical Keystone SmartEco Technology 3D Ready <0.5W Low Standby Power Consumption | HDMI Signal Power On SmartEco Technology 2D Keystone and Corner fit Optional Driver Free Interactive Supplied wall mount <2W Network Standby Power      | 7 Optional Lenses 360 ° projection and 24/7 2D Keystone and Corner fit Digital Shrink 3D Ready <2W Network Standby Power   | HDMI Signal Power On SmartEco Technology 2D Keystone Corner fit Optional Driver Free Interactive Supplied wall mount <2W Network Standby Power | 2D Keystone and Corner fit SmartEco Technology 3D Ready <2W Network Standby Power   |
| <b>Optional accessories</b>         | Instashow, QCAST wireless Dongle, FULL HD Adapter, Carrying bag, 3D Glasses DGD5, PSR01 Presentation Plus    | Instashow, QCAST wireless Dongle, FULL HD Adapter, Interactive Kit PW30U, PT20 Touch Laser Curtain, PSR01 Presentation Plus, 3D                         | InstaShow, 7 Manual lamps, QCAST wireless Dongle, FULL HD Adapter, 3D Glasses DGD5, PSR01 Presentation Plus, Also in white color model   | Instashow, QCAST wireless Dongle, FULL HD Adapter, Interactive Kit PW40U, PT12 Touch Laser Curtain, PSR01 Presentation Plus, 3D Glasses DGD5   | Instashow, QCAST wireless Dongle, FULL HD Adapter, 3D Glasses DGD5, PSR01 Presentation Plus   |

# Interactive Display Comparison



| Range                                   | RM Series              | RP Series               |
|---|------------------------|-------------------------|
| Sizes (inches)                          | 65, 75, 86             | 65, 75, 86              |
| Resolution                              | 4K UHD (3840x2160)     | 4K UHD (3840x2160)      |
| Interactive Technology                  | Fine IR Plus           | Fine IR Plus            |
| Touch Points (max)                      | 20                     | 20                      |
| Anti-Glare                              | AG75                   | AG80                    |
| Tempered Glass (Thickness   Mohs scale) | 3-4mm   7H             | 4mm   7H                |
| Germ-Resistant Screen *                 | ✓                      | ✓                       |
| Internal Speaker                        | 16Wx2                  | 16Wx2                   |
| InstaShare                              | ✓                      | ✓                       |
| AMS                                     | ✓                      | ✓                       |
| Saffi (voice control)                   | ✓                      | ✓                       |
| NFC Reader                              | ✗                      | ✓                       |
| DMS                                     | ✓                      | ✓                       |
| X-Sign Broadcast                        | ✓                      | ✓                       |
| Wall Mount Included                     | ✓                      | ✓                       |
| Annotation APP                          | EZWrite software       | EZWrite software        |
| Eye-Care                                | ✓                      | ✓                       |
| CO2 Sensor                              | ✗                      | ✓                       |
| Warranty                                | 3 years de/re-install* | 5 years de/re-install** |
| Oktopus licence                         | ✓                      | ✓                       |
| EZWrite Live compatibility              | ✗                      | ✓                       |
| Remote control - freeze/blank           | ✓                      | ✓                       |
| Pens                                    | ✓                      | ✓                       |
| Wifi Connectivity***                    | ✓                      | ✓                       |
| OPS                                     | ✓                      | ✓                       |

\* Part number dependent

\*\* FOC warranty upgrade to 5 years on 65", 75" & 86" if registered within 30 days of purchase

\*\*\* Dongle purchase required

# Interactive Display Specification

## RE Series

## Premium RP Series

| Model  | RE7501                         |
|--|--------------------------------|
| Screen Size                                    | 75"                            |
| Resolution                                     | 3840 x 2160                    |
| Brightness (Typ.)                              | 550                            |
| Contrast Ratio (Typ.)                          | 1200:1                         |
| Viewing Angle (H/V)                            | 178 / 178                      |
| Response Time (G-t-G)                          | <10ms                          |
| Backlight Life (hrs)                           | 50000                          |
| Operating Hour                                 | 18/7                           |
| Orientation                                    | Landscape                      |
| Power Type                                     | Internal                       |
| Power Supply                                   | 100V ~ 240V, 50-60Hz           |
| Maximum  | 341.5 W/h                      |
| Typical  | 239.1 W/h                      |
| Power Consumption                              |                                |
| Standby  | <0.5w                          |
| Off Mode                                       | 0W/h                           |
| AC Power Switch                                | Yes                            |
| Wake up  | HDMI                           |
| Technology, No. of touches                     | IR, 20 Points                  |
| Interface                                      | USB x2                         |
| Tempered Glass, Hardness                       | 3.2mm, 8H                      |
| AG coating                                     | AG, Haze 1% / AG80             |
| Eye-Care Solution                              | Eye-Care                       |
| Germ-Resistant Screen                          | Yes*                           |
| Operation Temperature                          | 0°C ~ 40°C                     |
| Operating Humidity                             | 20% ~ 80%                      |
| VGA  | x1                             |
| Input  |                                |
| HDMI   | x 3 (2.0)                      |
| Audio Input                                    | No                             |
| HDMI   | x1 (2.0)                       |
| Audio Output                                   | x1                             |
| USB  | USB TYPE A x4<br>USB TYPE B x2 |
| RS232  | x1 Input                       |
| RJ45   | Yes (LAN)                      |
| Remote Controller                              | x1                             |
| Internal Speaker                               | 15Wx2                          |
| Dimension (mm)                                 |                                |
| Screen   | 1735.98 x 1034.52 x 103.75mm   |
| Package  |                                |
| Screen   | 54                             |
| Weight (kg)                                    |                                |
| Package  | 73                             |
| Bezel Width (mm)                               | 27/47/27/27                    |
| Wall Mounting (VESA) (Screw Type /Max. Length) | Yes (Included)                 |
| OPS  | Yes                            |
| NFC sensor                                     | No                             |
| Pen Tray                                       | No                             |

| Model  | RP6502                                 | RP7502                                 | RP8602                                 |
|--|--|--|--|
| Screen Size                                    | 65"                                    | 75"                                    | 86"                                    |
| Resolution                                     | 3840 x 2160                            | 3840 x 2160                            | 3840 x 2160                            |
| Brightness (Typ.)                              | 350 nits                               | 450 nits                               | 400 nits                               |
| Contrast Ratio (Typ.)                          | 1200:1                                 | 1200:1                                 | 1200:1                                 |
| Viewing Angle (H/V)                            | 178 / 178                              | 178 / 178                              | 178 / 178                              |
| Response Time (G-t-G)                          | 8 ms                                   | 8 ms                                   | 8 ms                                   |
| Backlight Life (hrs)                           | 30,000                                 | 30,000                                 | 30,000                                 |
| Operating Hour                                 | 18 / 7                                 | 18 / 7                                 | 18 / 7                                 |
| Orientation                                    | Landscape                              | Landscape                              | Landscape                              |
| Power Type                                     | Internal                               | Internal                               | Internal                               |
| Power Supply                                   | 100 V~240 V, 50 Hz / 60 Hz             | 100 V~240 V, 50 Hz / 60 Hz             | 100 V~240 V, 50 Hz / 60 Hz             |
| Maximum  | 202.1W/h                               | 374.9 W/h                              | 423.1 W/h                              |
| Typical  | 141.47 W/h                             | 262.4 W/h                              | 296.2 W/h                              |
| Power Consumption                              |  |  |  |
| Standby  | <0.5W/h                                | < 0.5 W/h                              | <0.5 W/h                               |
| Off Mode                                       | 0 W/h                                  | 0 W/h                                  | 0 W/h                                  |
| AC Power Switch                                | Yes                                    | Yes                                    | Yes                                    |
| Wake up  | VGA / HDMI / LAN                       | VGA / HDMI / LAN                       | VGA / HDMI / LAN                       |
| Technology, No. of touches                     | IR, 20 points                          | IR, 20 points                          | IR, 20 points                          |
| Interface                                      | USB x 3                                | USB x 3                                | USB x 3                                |
| Tempered Glass, Hardness                       | 4mm, 7H                                | 4mm, 7H                                | 4mm, 7H                                |
| AG coating                                     | AG80                                   | AG80                                   | AG80                                   |
| Eye-Care Solution                              | Smart Eye-Care                         | Smart Eye-Care                         | Smart Eye-Care                         |
| Germ-Resistant Screen                          | Yes                                    | Yes                                    | Yes                                    |
| Operation Temperature                          | 0°C ~ 40°C                             | 0°C ~ 40°C                             | 0°C ~ 40°C                             |
| Operating Humidity                             | 10% ~ 90% RH                           | 10% ~ 90% RH W                         | 10% ~ 90% RH                           |
| VGA  | x1                                     | x1                                     | x1                                     |
| Input  |  |  |  |
| HDMI   | HDMI 2.0 x 3                           | HDMI 2.0 x 3                           | HDMI 2.0 x 3                           |
| Audio Input                                    | x1 (3.5 mm)                            | x1 (3.5 mm)                            | x1 (3.5 mm)                            |
| HDMI   | HDMI 2.0 x 1                           | HDMI 2.0 x 1                           | HDMI 2.0 x 1                           |
| Audio Output                                   | x1 (3.5 mm)                            | x1 (3.5 mm)                            | x1 (3.5 mm)                            |
| USB  | USB 3.0 x2,<br>USB 2.0 x3,<br>USB C x1 | USB 3.0 x2,<br>USB 2.0 x3,<br>USB C x1 | USB 3.0 x2,<br>USB 2.0 x3,<br>USB C x1 |
| RS232  | Yes                                    | Yes                                    | Yes                                    |
| RJ45   | Yes                                    | Yes                                    | Yes                                    |
| Remote Controller                              | Yes                                    | Yes                                    | Yes                                    |
| Internal Speaker                               | 16W x 2                                | 16W x 2                                | 16W x 2                                |
| Dimension (mm)                                 |  |  |  |
| Screen   | 1505.9 x 951.0 x 121.5                 | 1735.5 x 1085.8 x 130.7                | 1988.8 x 1229.8 x 138.4                |
| Package  | 1660 x 1070 x 275                      | 1880 x 1205 x 280                      | 2140 x 1340 x 280                      |
| Screen   | 44                                     | 61                                     | 79                                     |
| Weight (kg)                                    |  |  |  |
| Package  | 56                                     | 78                                     | 97.5                                   |
| Bezel Width (mm)                               | 23.4 (Top / Side), 70 (Bottom)         | 23.4 (Top / Side) / 70 (Bottom)        | 23.4 (Top / Side) / 70 (Bottom)        |
| Wall Mounting (VESA) (Screw Type /Max. Length) | 600 x 400 mm<br>M8 x 20 mm             | 600 x 400 mm<br>M8 x 20 mm             | 700 x 400 mm<br>M8 x 20 mm             |
| OPS  | Yes                                    | Yes                                    | Yes                                    |
| NFC sensor                                     | Yes                                    | Yes                                    | Yes                                    |
| Pen Tray                                       | Yes                                    | Yes                                    | Yes                                    |

\*Part number dependent

# RM Series

| Model   |                     | RM5502K                      | RM6503                          | RM7503                          | RM8603                          |
|---|---------------------|------------------------------|---------------------------------|---------------------------------|---------------------------------|
| Screen Size   |                     | 55"                          | 65"                             | 75"                             | 86"                             |
| Resolution  |                     | 3840 x 2160                  | 4K UHD 3840 x 2160              | 4K UHD 3840 x 2160              | 4K UHD 3840 x 2160              |
| Brightness (Typ.)   |                     | 350                          | 400 nits                        | 450 nits                        | 450 nits                        |
| Contrast Ratio (Typ.)   |                     | 5000 : 1                     | 1200 : 1                        | 1200 : 1                        | 1200 : 1                        |
| Viewing Angle (H/V)   |                     | 178 / 178                    | 178° / 178°                     | 178° / 178°                     | 178° / 178°                     |
| Response Time (G-t-G)   |                     | 8.5 ms                       | 8 ms                            | 8 ms                            | 8 ms                            |
| Backlight Life (hrs)  |                     | 50,000                       | 50,000                          | 50,000                          | 50,000                          |
| Panel Surface   |                     | -                            | AG, Haze 25%                    | AG, Haze 25%                    | AG, Haze 25%                    |
| Operating Hour  |                     | 18 / 7                       | 18 hrs / 7 days                 | 18 hrs / 7 days                 | 18 hrs / 7 days                 |
| Orientation   |                     | Landscape                    | Landscape                       | Landscape                       | Landscape                       |
| System Memory   |                     | 4GB                          | 8GB                             | 8GB                             | 8GB                             |
| Storage   |                     | 32GB                         | 32GB                            | 32GB                            | 32GB                            |
| OS  |                     | Android 8.0                  | Android 9.0                     | Android 9.0                     | Android 9.0                     |
| Power Supply  |                     | 100V ~ 240V, 50-60Hz         | 100V~240V, 50-60Hz              | 100V~240V, 50-60Hz              | 100V~240V, 50-60Hz              |
| Power Consumption   | Maximum (W/h)       | 341.5 W/h                    | 334.6                           | 395.9                           | 488.2                           |
|   | Typical (W/h)       | 239.1 W/h                    | 118                             | 146                             | 180                             |
|   | Standby Mode (W/h)  | <0.5w                        | <0.5                            | <0.5                            | <0.5                            |
| AC Power Switch   |                     | Built-in                     | Built-in                        | Built-in                        | Built-in                        |
| Wake up   |                     | Yes                          | LAN / HDMI / VGA / DP           | LAN / HDMI / VGA / DP           | LAN / HDMI / VGA / DP           |
| Touch Technology  |                     | Infrared                     | Infrared                        | Infrared                        | Infrared                        |
| Number of Touch Points  |                     | 1R, 20 Points                | 20 Points                       | 20 Points                       | 20 Points                       |
| Touch Interface   |                     | USB x2                       | USB Type B x 3                  | USB Type B x 3                  | USB Type B x 3                  |
| Tempered Glass  |                     | 3mm                          | 3.2 mm                          | 3.2 mm                          | 3.2 mm                          |
| Hardness  |                     | 7H                           | 9H                              | 9H                              | 9H                              |
| AG coating  |                     | Yes                          | Yes                             | Yes                             | Yes                             |
| Eye-Care Solution   |                     | Yes                          | Yes                             | Yes                             | Yes                             |
| Air-Quality Sensor  |                     | No                           | No                              | No                              | No                              |
| Germ-Resistant Screen   |                     | Yes                          | Yes                             | Yes                             | Yes                             |
| Operation Temperature   |                     | 0°C ~ 40°C                   | 0°C ~ 40°C                      | 0°C ~ 40°C                      | 0°C ~ 40°C                      |
| Operating Humidity  |                     | 20% ~ 80%                    | 10% ~ 90% RH Non-Condensing     | 10% ~ 90% RH Non-Condensing     | 10% ~ 90% RH Non-Condensing     |
| Energy Efficiency   |                     | Energy 8.0 Certified         | Energy 8.0 Certified            | Energy 8.0 Certified            | Energy 8.0 Certified            |
| Input   | VGA                 | x 1                          | x 1                             | x 1                             | x 1                             |
|   | DVI                 | No                           | No                              | No                              | No                              |
|   | HDMI 2.0            | x3                           | x 3                             | x 3                             | x 3                             |
|   | Display Port 1.2    | No                           | x 1                             | x 1                             | x 1                             |
|   | Audio Input (3.5mm) | No                           | x 1                             | x 1                             | x 1                             |
| Output  | VGA                 | No                           | No                              | No                              | No                              |
|   | DVI                 | No                           | No                              | No                              | No                              |
|   | HDMI 2.0            | x 1                          | x 1                             | x 1                             | x 1                             |
|   | DisplayPort         | No                           | No                              | No                              | No                              |
|   | Audio Output        | x 1                          | x 1                             | x 1                             | x 1                             |
| USB   | Type A              | x5                           | x 7 (2.0 x 2 / 3.0 x 5)         | x 7 (2.0 x 2 / 3.0 x 5)         | x 7 (2.0 x 2 / 3.0 x 5)         |
|   | Type B              | -                            | x 3 (2.0 x 2 / 3.0 x 1)         | x 3 (2.0 x 2 / 3.0 x 1)         | x 3 (2.0 x 2 / 3.0 x 1)         |
|   | Type C              | -                            | x 1                             | x 1                             | x 1                             |
| RS232   |                     | Yes                          | x 1                             | x 1                             | x 1                             |
| RJ45  |                     | Yes                          | x 2                             | x 2                             | x 2                             |
| Remote Controller   |                     | x 1                          | x 1                             | x 1                             | x 1                             |
| Internal Speaker  |                     | 15Wx2                        | 16W x 2                         | 16W x 2                         | 16W x 2                         |
| Dimension (mm)  | Screen              | 1735.98 x 1034.52 x 103.75mm | 1506 x 951 x 120                | 1717 x 1065 x 121               | 1962 x 1203 x 121               |
|   | Net Weight          | 30.8Kg                       | 41.5                            | 53                              | 68.5                            |
| Weight (kg)   | Gross Weight        | 41.2Kg                       | 57.5                            | 72                              | 89.5                            |
|   | Bezel Width (mm)    | 27/47/27/27                  | 16.6 / 16.6 / 16.6 / 16.6       | 16.6 / 16.6 / 16.6 / 16.6       | 16.6 / 16.6 / 16.6 / 16.6       |
| Wall Mounting (VESA) (Screw Type /Max. Length)                                  |                     | 400 x 200 mm M8 x 25 mm      | 600 x 400 (4 holes); 4 – M8*20L | 800 x 400 (4 holes); 4 – M8*20L | 800 x 600 (4 holes); 4 – M8*20L |
| Wall Mount Kit  |                     | Included                     | Included                        | Included                        | Included                        |
| OPS Slot  |                     | Yes                          | Yes                             | Yes                             | Yes                             |
| NFC sensor  |                     | No                           | No                              | No                              | No                              |
| Pen Tray  |                     | No                           | Yes                             | Yes                             | Yes                             |
| Wireless Screen Sharing & Casting   |                     | InstaShare 2                 | InstaShare 2                    |                                 |                                 |
| Collaborative Whiteboarding (Android & Windows)                                 |                     | EZWrite 5                    | EZ Write 6.0                    | EZ Write 6.0                    | EZ Write 6.0                    |
| Cloud Whiteboarding for Remote & Hybrid Learning (Google Classroom Integration) |                     | EZ Write Web                 | EZ Write Web                    | EZ Write Web                    | EZ Write Web                    |
| Remote Broadcast System   |                     | X-Sign Broadcast             | X-Sign Broadcast                |                                 |                                 |
| Instant Access to Cloud Storage & Account Management                            |                     | AMS                          | AMS                             | AMS                             | AMS                             |
| Centralised and Remote Device Management  |                     | DMS                          | DMS                             | DMS                             | DMS                             |



# Digital Signage Specification

| Model  | BH2801   | ST4302S  |
|--|--|--|
| Screen Size  | 28"  | 43"  |
| Touch Technology                                   | -  | -  |
| Orientation / Usage hours                          | Landscape / Portrait 24/7                        | Portrait / Landscape 18/7                        |
| Resolution   | 1920 x 360 - 16:3                                | UHD 3840 x 2160                                  |
| Brightness   | 1,000 nits                                       | 500 nits   |
| Contrast Ratio                                     | 3,000:1  | 1,100:1  |
| Response time                                      | 8 ms   | 6ms  |
| Pixel pitch / Viewing Angle                        | 0.36 mm / 178° / 178°                            | 0.245 mm / 178° / 178°                           |
| Built-in Speaker                                   | 1Wx2   | 5Wx2   |
| VGA Input/Output                                   | No / No  | x1 / No  |
| DVI-D Input/Output                                 | No / No  | x1 / No  |
| HDMI Input/Output                                  | Yes 1 x 1.4 / No                                 | x2 (2.0 x 2) / No                                |
| Display Port Input/Output                          | No / No  | x1 (1.1/1.2) / No                                |
| Audio (L/R, RCA) Input/ Output                     | No / No  | No / No  |
| Line(3.5mm) Input/Output                           | No / No  | No / x1  |
| USB Port   | x2 (2.0 x 2)                                     | x3 (2.0 x 3)                                     |
| RS232 Input / Output                               | x1 / No  | x1 / No  |
| LAN RJ45 Port                                      | x1   | x1   |
| OPS/Option board slot                              | No   | No   |
| Weight (without packaging / with packaging) Kg     | 5.3 / 8.1  | 10.4 / 14.0                                      |
| Dimensions (WxHxD) / Bezel (top/bottom/left/right) | 728.8 x 162.4 x 45.5 / 14.7 / 14.7 / 14.7 / 14.7 | 969.9 x 558.3 x 84.8 / 13.0 / 13.0 / 13.0 / 13.0 |
| Wall mount (Screw Type /Max. Length)               | 400 x 100 (4 holes); 4 - M4 x 10L (VESA)         | 200 x 400 (4 holes); 4 - M6 x 28L (VESA)         |
| VGA Daisy Chain                                    | No   | No   |
| Digital Daisy Chain                                | No   | No   |
| RS232 Daisy Chain                                  | No   | No   |
| Warranty   | 3 years on site exchange                         | 3 years on site exchange                         |

# Camera Specification

| Model                            | DVY31  | DVY32   | DVY23  |
|----------------------------------|--|---|--|
| <b>Dimension (H x W x D)</b>     | 102.0 mm × 47.3 mm × 29.9 mm   | 180.1 mm × 47.4mm × 44.0mm  | 150 mm × 181 mm × 116 mm   |
| <b>Weight</b>                    | 0.16 kg  | 0.40 kg   | 138 kg   |
| <b>Sensor</b>                    | 1080P FHD  | 4K UHD conference cam   | 1080P FHD  |
| <b>Resolution</b>                | 1080p, 720p. SD@30fps  | Main Stream: 4K@30fps. 1080p@60fps/30 fas,720p@90f-ps/60fps/30 fps. Sub Stream: 720P. 480P@30fps/25fps  | 1080p. 720p. SD@30 fps   |
| <b>Field of view</b>             | Horizontal: 85°, Vertical: 52%.<br>Diagonal: 92°   | Horizontal 108.6°, Vertical: 59.8°.<br>Diagonal: 120°   | Horizontal: 55°, Vertical: 31°. Diagonal: 63°  |
| <b>Zoom</b>                      | -  | Digital: 5x   | Optical: 20x. Digital: 10x   |
| <b>Pan   Tilt</b>                | -  | Digital   | ±170°   -30° to 90°  |
| <b>Pan   Tilt speed</b>          | -  | -   | 100%/sec   45%/ec  |
| <b>Focus</b>                     | Fixed  | Fixed   | Auto and manual  |
| <b>Auto Framing</b>              | -  | Yes   | -  |
| <b>Preset positions</b>          | -  | Remote: 3. OSD: 10  | 10 with remote, 255 with LAN   |
| <b>Lens Type</b>                 | Glass  | Glass   | Glass  |
| <b>Low light performance</b>     | 0.5 Lux  | 0.1 Lux   | 0.5 Lux  |
| <b>Microphone</b>                | Omnidirectional mics ×2  | Omnidirectional mics X2   | -  |
| <b>Effective pickup distance</b> | Up to 5 m  | Up to 8 m   | Subject to the mic you use   |
| <b>Input</b>                     | -  | -   | 3.5 mm   |
| <b>Output</b>                    | -  | -   | HDMI, Ethernet, SDI  |
| <b>Echo cancellation</b>         | Yes  | Yes   | -  |
| <b>Out</b>                       | USB 2.0  | USB 3.0   | USB 3.0, HDMI, Ethernet, SDI   |
| <b>Ethernet</b>                  | -  | -   | GbE port, Power over Ethernet  |
| <b>In   Out</b>                  | -  | -   | RS232. RS422, R\$485   RS232   |
| <b>Voltage</b>                   | 5 V  | 5 V   | 12 V   |
| <b>Operating Systems</b>         | Windows 7, 8.1. 10, Linux, Chrome™ OS*, macOS™ 10.10 and higher.   | Windows 7. 8.1. 10, Linux, Chrome™ OS* macOS 10.10 and higher.  | Windows 7 (1080P/720P). Windows 8.1. Windows 10. macOS™ 10.10, Linux (UVC), and higher.  |
| <b>BenQ Displays</b>             | CPOIK, CSOI, SLO2K, STO2, RPO2, RMO2S, RMO2K, RMO3, REO1, and later models   | CPOIK, CSOI, SLO2K, STO2, RPO2, RMO2S, RMO2K, RMO3, REO1, and later models  | CPOIK, CSOI, SLO2K, STO2, RP02, RMO2S, RMO2K, RM03, REO1, and later models   |
| <b>USB</b>                       | Plug and play  | Plug and play   | Plug and play  |
| <b>Included</b>                  | <ul style="list-style-type: none"> <li>• 1080P FHD webcam</li> <li>• Privacy cover</li> <li>• USB cable (built-in)</li> <li>• Quick start guide</li> </ul> | <ul style="list-style-type: none"> <li>• 4K UHD conference cam</li> <li>• USB 3.0 Type-B cable</li> <li>• Quick start guide</li> <li>• Remote control (batteries not included)</li> </ul> | <ul style="list-style-type: none"> <li>• 1080P FHD PTZ conference cam</li> <li>• Camera mount (built-in)</li> <li>• USB 3.0 Type-B cable</li> <li>• Power supply</li> <li>• Remote control (batteries not included)</li> </ul> |

# InstaShare Specification

## TCY3I InstaShare Dock

|                                    |  |
|------------------------------------|--|
| Colour                             | Black                                      |
| Weight (Net)                       | 420g                                       |
| InstaShare Button Loading Quantity | 4pcs                                       |
| Product material                   | PC+ABS & Aluminium alloy 6063 & Silica Gel |

## TDY2I Wireless USB Adapter

|                         |  |
|-------------------------|--|
| Color                   | Black  |
| Wi-Fi Standard          | 802.11 a/b/g/n/ac  |
| Interface               | USB 3.0  |
| Wi-Fi band              | Dual Band 2.4GHz / 5GHz                                    |
| MU-MIMO                 | Yes  |
| Wi-Fi Performance       | 2.4 GHz Band: up to 400 Mbps<br>5 GHz Band: up to 867 Mbps |
| External Antenna        | 2  |
| Supported OS            | Android  |
| Wireless Coverage Reach | Max. 15 m (Between Dongle and IFP)                         |
| Security                | WPA-PSK/WPA2-PSK WPA/WPA2/WEP                              |
| Power Supply            | DC 5V, 0.9A (Maximum)                                      |
| Dimension L*H*W         | 137 x 41 x 12 mm   |
| Net Weight              | 0.055kg  |
| Temperature range       | Operation : 0°C~40°C<br>Storage : -40°C~70°C               |
| Humidity range          | <b>Operation: 10%~90%</b><br><b>Storage: 5%~90%</b>        |

## TWY3I InstaShare Button

|                                  |  |
|----------------------------------|--|
| Color                            | Silver   |
| Wireless Transmission Frame Rate | Up to 60 fps depending on environment(1080P60/4K30P)   |
| TX Button Input resolution       | Up to 4K30P  |
| Audio Rate                       | Stereo, Radio quality 16bits 48KHZ   |
| Wi-Fi Standard                   | IEEE 802.11 ac 5GHz, 2T2R MIMO   |
| Authentication protocol          | Wi-Fi Standard   |
| Wireless Security (Encryption)   | WPA2/3 Personal/WPA2 Enterprise Support AES-256  |
| Wireless Coverage Reach          | Max. 15 m (Between Button and IFP)   |
| Cable                            | USB Type C   |
| Power Supply                     | DC 5V+10%, Minimum 0.9A  |
| Power Consumption                | Max 4.5W Full Loading  |
| Dimension (WxHxD)                | 67mm x 67mm x23.2mm  |
| Temperature range                | Operating: 0°C to +40°C (+32°F to +104°F)<br>Storage: -10°C to +60°C (+14°F to +140°F)           |
| Humidity range                   | Operating: 10% to 80% relative humidity<br>Storage: 5% to 90% relative humidity (non-condensing) |



## Customer service and aftercare



### Training

Ongoing hardware and software training for all users.



### Service & support

Remote and onsite technical support available.



### 5 year warranty

Upon display registration within 30 days of purchase.



### Demo fleet

Trial the BenQ education product range with no commitment.

To find out more or visit: [www.benq.eu/en-uk/business/](http://www.benq.eu/en-uk/business/)