

SM5KD Series

65SM5KD

 ZOOM

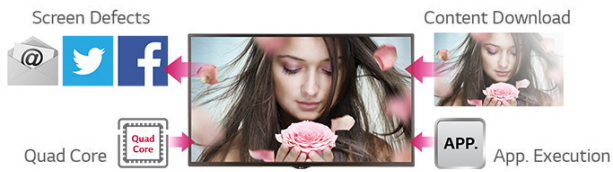


Key Features

Brightness : 450 cd/m2 | Bezel : T/L/R 11.9 mm, B 18.0 mm | Depth : 56.5 mm
| Interface : HDMI(2), DVI, DP, RGB, RJ45, IR, RS232C, USB | Built-in Speaker : 10W + 10W

Where to Buy

Add to Compare | PRINT | SHARE 



*System-on-Chip

Smart Platform

Quad Core SoC*

The high-performance SoC can execute several tasks at the same time and provides smooth content playback without an external media player.

PBP (Picture-By-Picture)/PIP (Picture-In-Picture)

PBP (Picture-By-Picture) and PIP (Picture-In-Picture) features enable you to compose various layouts for several digital devices.

PBP (Picture-By-Picture)



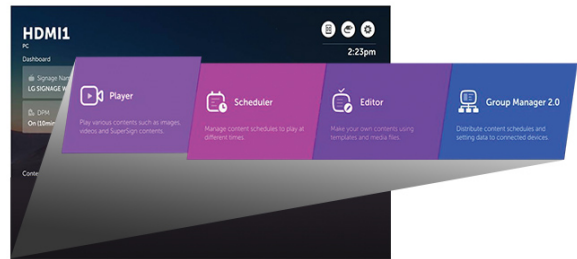
PIP (Picture-In-Picture)



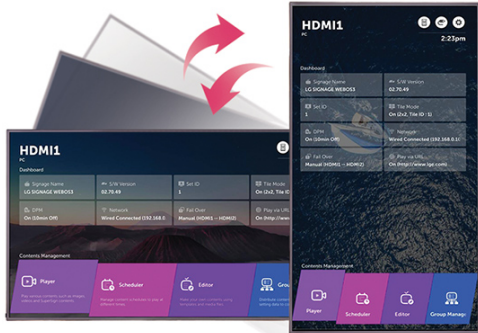
Integrated CMS (Contents Management System)

You can edit contents, check your schedule, and use group manager function etc. without a separate PC. It is one-stop system that enables you to manage the signage.

webOS 3.0+



webOS 3.0+



Portrait & Landscape Mode

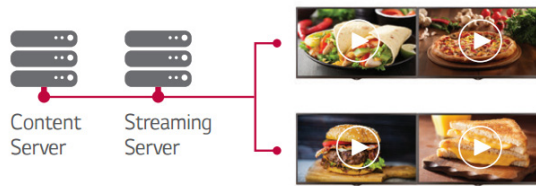
When using the signage in Portrait Mode, GUI tailored to Portrait Mode is provided without affecting images' original ratio and resolution.

EZ Setting

As all of its unique functions are indexed in EZ setting, you can enjoy convenient access to setting for efficient management.



webOS 3.0+



*RTSP (Real-Time Streaming Protocol),
 RTP (Real-time Transport Protocol),
 MMS (Microsoft Media Server), HLS (http live streaming)

Support Network Protocol

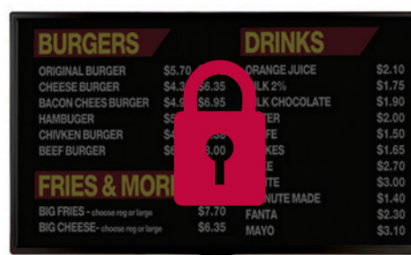
IP Streaming Protocol

Various types of IP video streaming protocol are supported, such as RTSP/RTP, MMS, HLS and MPEG-2 TS*.

Support Network Protocol

Secure Communication Protocol

By supporting HTTPS* protocol, communication between server and signage is more secure.



*HTTPS: Hypertext Transfer Protocol over Secure Socket Layer



Support Network Protocol

Proxy Server

Web access speed and security can be improved by supporting Proxy Server (A server that acts as an intermediary for requests from clients seeking resources from other servers.)

Built-in Wi-Fi

Mirroring

Content sharing is more convenient on a Wi-Fi network.



Built-in Wi-Fi

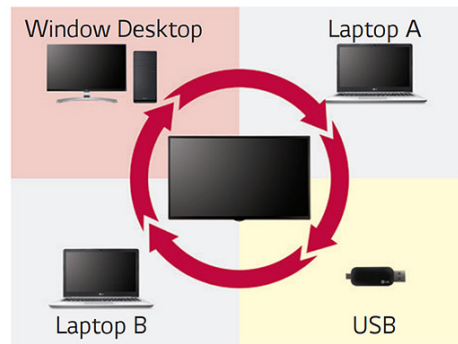
SoftAP

The SM5KD with SoftAP software can operate as a wireless access point for mobile devices.

Convenient Management

Enhanced Connectivity

Through its diverse interface, the signage lets you connect more than one device for optimal use.





Supportive Convenience

BEACON

With BEACON and Bluetooth Low Energy (BLE) supported by SM5KD*, retail stores can provide coupons and information in real time.

* SM5KD is enhanced to support ibeacon** and Eddystone***
** iBeacon: Bluetooth Low Energy beacon profile released by Apple in 2013
*** Eddystone: Bluetooth Low Energy beacon profile released by Google in 2015



Enhanced Maintenance

Dust & Humidity Protection

Circuit board reliability is enhanced with conformal coating that protects against dust, iron powder, humidity and other harsh conditions.

Panel

Screen Size	65"
Resolution	1,920 x 1,080 (FHD)

Connectivity

Input	HDMI (2), DP, DVI-D, RGB, Audio, USB 3.0
Output	DP, Audio
External Control	RS232C in/out, RJ in, IR Receiver, Pixel Sensor

Physical Specification

Bezel Width	11.9mm (T/R/L), 18mm (B)
Monitor Dimension (W x H x D)	1,456.9 x 838 x 56.5 mm
Weight (head)	27.9Kg
VESA™ Standard Mount Interface	300 x 300

Environment Conditions

Operation Temperature	0 °C to 40 °C
Operation Humidity	10 % to 80 %

Power

Power Supply	100-240V~, 50/60Hz
Power Type	Built-In Power

Power Consumption

Typ.	120W
Smart Energy Saving	85W

Standard (Certification)

Safety	UL / cUL / CB / TUV / KC
EMC	FCC Class "A" / CE / KCC
ErP / Energy Star	NA / Yes(Energy Star 7.0)

Media Player Compatibility

OPS type compatible	Yes
External Media player Attachable	Yes (MP500/MP700)

Software Compatibility

Content Management Software	SuperSign Premium
Control and Monitoring Software	SuperSign Link

Accessory

Basic	Remote Controller (included 2ea batteries), Power Cord, QSG, RGB Cable, Regulation Book, Phone to RS232C Gender, Memory cover
Optional	Speaker (SP-5000), Stand (ST-652T), Pixel Sensor (KT-SPO), Media Player, Wall Bracket (LSW350B), VESA Adapter (AMB330S), OPS Kit (KT-OPSA), HDBaseT (EB-B100), Touch Overlay (KT-T651)

QUESTIONS? LET US HELP

Product Support



Simply choose a support option from the icons below:



Phone

Call an LG Support Representative on:
Hong Kong:(852) 3543-7777
Macau:(853) 0800-498

Monday to Friday : 09:00 to 19:00
Saturday - Sunday : Close
Public Holidays: Close



Email

[Send LG Support your inquiry.](#)

RECENTLY VIEWED



SM5KD Series

65SM5KD