



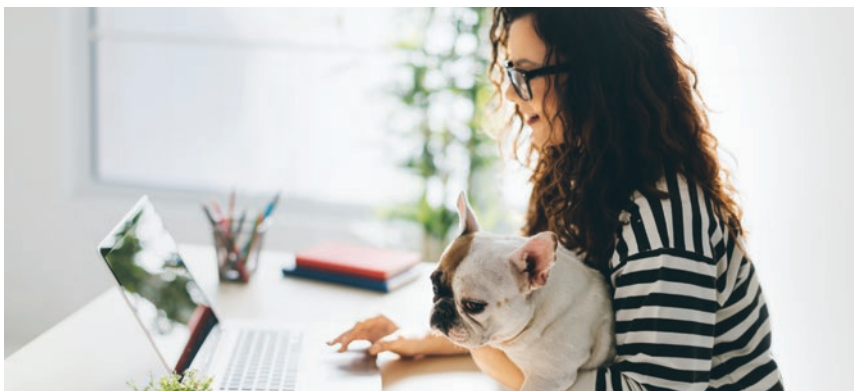
## LINKSYS VELOP AC1200 DUAL-BAND MESH Wi-Fi SYSTEM

### Wi-Fi That Fits Your Life

Velop with Intelligent Mesh™ Technology is an award-winning family mesh Wi-Fi system designed to create a flawless, full-strength Wi-Fi experience. Regardless of your home's shape or size, or wherever your internet comes in, Velop can be customized to your needs. It provides seamless Wi-Fi everywhere and continuously optimizes to find the fastest path to the internet. Unlike traditional routers with range extenders, each node provides a powerful Wi-Fi signal. And as your home and family expands, you can easily add more nodes. It works with all internet service provider supplied equipment and speeds, and its simple app-based setup will get you up and running in minutes.

### Key Features

- **Works with all internet service providers**  
Enjoy flawless Wi-Fi with all internet service provider supplied equipment and speeds
- **Gets better all the time**  
Velop self-heals and optimizes to consistently deliver fast and flawless Wi-Fi
- **Future-proofing Wi-Fi**  
Automatic software updates keep your system up-to-date and secure
- **Sets up in minutes**  
With the Linksys App, simply place nodes around your home, name your network and choose a password
- **Designed to fit anywhere**  
Simple, elegant design fits with any home style
- **Keeps your family safe**  
Easily block content for safety and pause the internet for family time





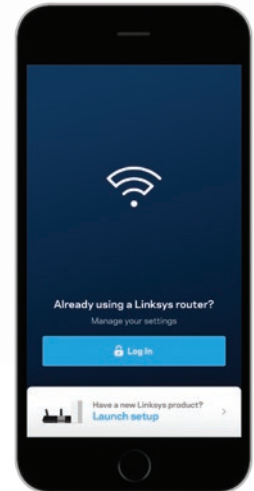
Bottom



Top



Back



Linksys App

**Package Includes:**

**1-pack (VLP0101-EU/UK/)**

- Linksys Velop
- Ethernet cable
- Power adapter
- Quick Start Guide
- Printed Documentation

**2-pack (VLP0102-EU/UK-ME/)**

- Linksys Velop (x2)
- Ethernet cable (x1)
- Power adapter (x2)
- Quick Start Guide
- Printed Documentation

**3-pack (VLP0103-EU/UK-ME/)**

- Linksys Velop (x3)
- Ethernet cable (x1)
- Power adapter (x3)
- Quick Start Guide
- Printed Documentation

**Tech Specs:**

**Wi-Fi Mesh Connectivity for Seamless Wi-Fi and Simultaneous Streaming**

Wi-Fi AC1200 (867 + 300 Mbps)\* with MU-MIMO  
 2.4 GHz radio - 300 Mbps\*  
 5 GHz radio - 867 Mbps\*  
 Simultaneous Dual-Band  
 IEEE 802.11b/g/n - 2.4 GHz - 256 QAM support  
 IEEE 802.11a/n/ac - 5 GHz  
 Beamforming - Beamforming for 2.4 GHz and 5GHz bands  
 Seamless roaming technology

**Processor and Memory for Faster Processing**

716 MHz Quad Core  
 256 MB Flash and 256 MB SDRAM

**Antenna for Expanded Coverage**

Two Dual-Band antennas and high powered amplifiers

**Operating Frequencies:**

2142-2472MHz  
 5180-5320MHz  
 5500-5700MHz

**Output Power:**

2142-2472MHz: 19.97dBm  
 5180-5320MHz: 22.96dBm  
 5500-5700MHz: 28.38 dBm

**Antenna Type:** PCB

**Antenna Gain:**

Bluetooth:1.48dBi  
 2142-2472MHz: 2.4dBi  
 5180-5700MHz: 3.6dBi

**Wired Connectivity for WAN and LAN Connectivity**

Two auto-sensing Gigabit Ethernet ports for WAN and/LAN connection

**Bluetooth 4.1/LE for Secure and Easy App Based Set-up**

**Security**

WPA2 personal wireless encryption

**Dimensions - Smaller Footprint to Blend into Your Home**

7.9cm Square base  
 14cm

**Required for set-up - Simple and secured App Based Set-up**

Mobile devices with Android 4.0.3 or iOS 8 and higher



Also compatible with Windows 10



\* Maximum Performance derived from IEEE Standard 802.11 specifications. Actual performance may vary, including lower wireless network capacity, data throughput rate, speed, range and coverage. Performance depends upon many factors, conditions and variables, including building materials and construction, volume of network traffic, mix of wireless products used, interference and other adverse conditions. In order to achieve the best performance, this product must be used with compatible AC1200 wireless devices. The standard transmission rates—867 Mbps (for 5 GHz radio), 300 Mbps (for 2.4 GHz)—are the physical data rates. Actual data throughput will be lower and may depend on the mix of wireless products used and external factors.

Specifications are subject to change without notice. An active, customer-purchased Internet Service Provider broadband account is required for connection of this product and other connected devices to the Internet. Some devices may require additional wireless adapters or an Ethernet cable to connect.

May require a software/firmware update available for download at [linksys.com/support](http://linksys.com/support).

Each node in the wireless system provides a range of the approximate size of a 1-2 Bedroom house or apartment. Range can vary with the number and placement of nodes in the system. Range specifications are based on performance test results under normal use case conditions. Actual ranges will vary depending on wireless obstructions, operating environments and building material. Wireless coverage claims are used only as reference and are not guaranteed, as each wireless network is unique.

© 2018 Belkin International, Inc. and/or its affiliates. All rights reserved. Linksys 121 Theory, Irvine, CA 92617 USA Made in China

Belkin, Linksys, Velop and many product names and logos are trademarks of the Belkin group of companies. Third-party trademarks mentioned are the property of their respective owners. [Alexa and the Amazon logo are trademarks of Amazon.com, Inc. or its affiliates]. Apple and the Apple logo are trademarks of Apple Inc., registered in the U.S. and other countries. App Store is a service mark of Apple Inc. Android and Google Play are trademarks of Google Inc. Bluetooth® is a registered trademark owned by Bluetooth SIG Inc. and its use by Belkin is under license. Wi-Fi and Wi-Fi Protected Setup are either trademarks or registered trademarks of the Wi-Fi Alliance. The Wi-Fi CERTIFIED Logo is a certification mark of the Wi-Fi Alliance

Part Number	UPC:	EAN	Plug Type:
VLP0101-EU	745883763474	4260184667642	French/German Combo Plug (CEE7/7)
VLP0101-UK	745883763498		British Plug (BS1363)
VLP0102-EU	745883763504	4260184667666	French/German Combo Plug (CEE7/7)
VLP0102-ME	45883758272	4260184667574	British Plug (BS1363)
VLP0102-UK	745883763511		British Plug (BS1363)
VLP0103-EU	745883758258	4260184667581	French/German Combo Plug (CEE7/7)
VLP0103-ME	745883761579	4260184667598	British Plug (BS1363)
VLP0103-UK	745883758302		British Plug (BS1363)