

**D-Link**<sup>®</sup>

# PRODUCT GUIDE

SWITCHES

INDUSTRIAL SOLUTION

WIRELESS

VIDEO SURVEILLANCE

SMART HOME



## WHY D-LINK?

# Why D-Link?

D-Link has been the brand of choice for millions of customers since way back in 1986. Back, in fact, since the Internet was in its infancy. We have grown with it, led the trends and continuously developed leading-edge products that reflect the needs and demands of real people in the real world, whether at work or at home.

With over 30 years in the industry, D-Link has both the resources and expertise needed to pioneer technological trends through ongoing research and development programmes. All this translates into affordable, market-leading products that make your business or personal life easier.



## For Home

There's no avoiding it – we now live in a digital world, a world in which we want all our devices to talk to each other, to seamlessly integrate without the need for human intervention or continual techy tinkering. We want to stream music throughout our homes, ask Siri or Alexa what the weather will be like, visually monitor our babies or pets, download HD movies, share photos, play games and, of course, check our emails and browse the web.

All this needs modern, technologically advanced products that seamlessly integrate into our lives. And D-Link provides it all. Whether you need the latest Wave2 Wireless router, a state-of-the-art network camera, smart plug, Wi-Fi range extender or a 4G dongle, there's a D-Link product to suit.

## For Business

From a business user perspective, D-Link has the scale, the resources, the experience and the expertise that the world's most demanding businesses look for. We make sure we stay really close to our customers' businesses and then, because our R&D resources are geared to fast-track product development, we provide them with early access to the most advanced solutions possible.

D-Link's switching, industrial Ethernet, wireless, security, surveillance and management solutions deliver best-in-class performance. We offer standardised technology with industry-leading functionality integrated into highly flexible, highly reliable and highly secure solutions that are easy to implement, at a price you can afford.



# Contents



<b>Switches</b>	<b>4</b>
Unmanaged Switches	5
Fast Ethernet Smart Switches	6
Gigabit Smart Switches	7
10 Gigabit Smart Switches	12
Layer 2 Gigabit Managed Switches	12
Layer 3 Gigabit Managed Switches	13
Data Center 10/25/40/100G Managed Switches	15
Switch Accessories	16
Industrial Ethernet Switches	18



<b>Cloud Networking Solution</b>	<b>20</b>
Nuclias Cloud	22
Nuclias Connect	23

<b>Business Wireless</b>	<b>24</b>
Managed Wireless	24
Access Points	25



<b>Video Surveillance</b>	<b>26</b>
Network Video Cameras	27
Network Video Recorders	28
D-View Cam Software	29
Vigilance Cameras	30
Gigabit Smart Managed Surveillance Switches	32



D-Link Assist	33
---------------	----



<b>mydlink</b>	<b>34</b>
mydlink devices and mydlink app	34



<b>Consumer Wireless / Powerline / USB</b>	<b>36</b>
Covr Whole-Home Wi-Fi	36
Wi-Fi Routers	38
Wi-Fi Extenders, Access Points, Hotspots	40
3G/4G LTE Wi-Fi Adapters	40
Wi-Fi Modem Routers	41
Powerline	42
USB	42



Value In Partnership+ Programme	43
---------------------------------	----

## SWITCHES



# Keep your workflow running smoothly

If a switch fails, your business can experience any number of issues, from loss of connectivity for a group of users, to major disruption and downtime for the entire network. From the core of your network to its edge, D-Link's comprehensive selection of switches includes 10 Gigabit, Gigabit, Fast Ethernet and PoE that range from entry level to fully managed, more sophisticated solutions, including switches designed specifically for Metro Ethernet and datacentre applications.



## Unmanaged Switches

*No-brainer networking*

**Just plug it in, make your connections, and that's it. No configuration necessary.**

- Simple to setup with plug 'n' play
- Optional PoE models



## Smart Managed Switches

*Essential features with affordability*

**D-Link Smart Switches offer a robust set of Layer 2 and Layer 2+ features designed to support the most demanding applications.**

- Extensive range to meet the networking needs of businesses of all sizes
- Optional PoE models that support PoE/PoE+ with high PoE power budgets
- Optional models with 10 Gigabit uplinks and high availability support with physical stacking
- L2/L2+ features help to optimise and improve network efficiency



## Managed Switches

*Seamless connections for demanding uses*

**Designed for network applications requiring the highest availability and reliability.**

- High-performance L3 switches
- 10 Gigabit uplinks and up to 80 Gigabit high-bandwidth stacking
- Optional Enhanced and MPLS images to add advanced VLAN and L3 routing as well as MPLS protocols support
- Comprehensive management and security features

## Independent switch reviews...



Tolly Group has tested several of our smart managed and fully managed switches against well-known competitors, and the results are excellent. To find out more, visit <https://dlink.to/tollyreport>.

SWITCHES

Fast Ethernet Unmanaged

Fast Ethernet



MODEL	DES-1005D	DES-105	DES-1005P	DES-1008D	DES-108	DES-1008PA	DES-1016D	DES-1018MP	DES-1024D
Number of Fast Ethernet ports	5	5	5	8	8	8	16	16	24
Number of Gigabit ports								2	
Switching capacity	1 Gbps	1 Gbps	1 Gbps	1.6 Gbps	1.6 Gbps	1.6 Gbps	3.2 Gbps	1.6 Gbps	4.8 Gbps
PoE standards			802.3af, 802.3at			802.3af		802.3af	
PoE power budget			60 W			52 W		246.4 W	
PoE capable ports			Port 1-4, up to 30 W			Port 1-4, up to 15.4 W		Port 1-16, up to 15.4 W	
Desktop	•	•	•	•	•	•	•	•	•
Rackmountable									
Metal enclosure		•	•		•	•	•	•	•
Fanless	•	•	•	•	•	•	•	•	•
MAC address	2K	2K	2K	1K	1K	1K	8K	8K	8K
Jumbo frame		2047 Bytes			1536 Bytes		2000 Bytes		
802.1p QoS		• (Strict mode)	• (Strict mode)		• (Strict mode)		2• (Strict mode)		• (Strict mode)
Number of QoS queues		2	4		2		4		4
D-Link Green	•	•	•	•	•		•		•
802.3az EEE	•	•	•	•	•		•	•	•
Power supply type	External	External	External	External	External	External	Internal	Internal	Internal

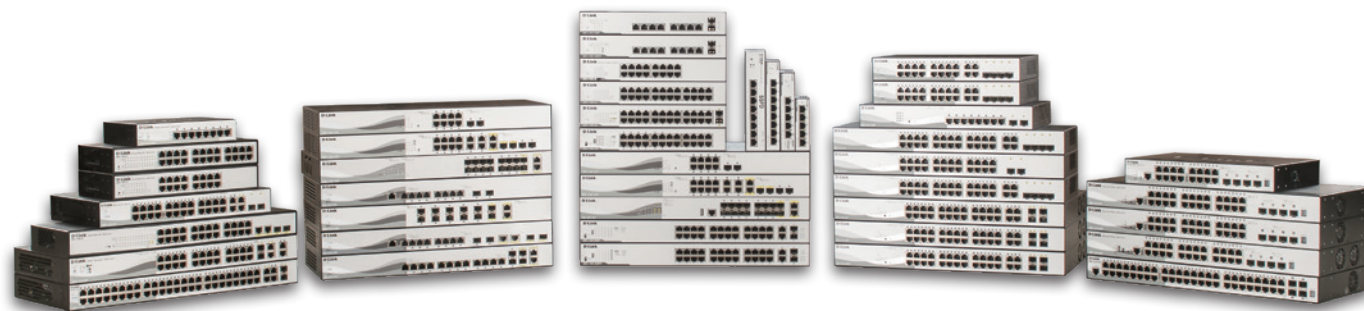
Gigabit Unmanaged

Gigabit Ethernet



MODEL	DGS-1005D	DGS-105	DGS-1005P	DGS-1008D	DGS-108	DGS-1008P	DGS-1008MP	DGS-1016D	DGS-1024D	DGS-1026MP
Number of Gigabit ports	5	5	5	8	8	8	8	16	24	24
Number of Combo 1000BASE-T/SFP ports										2
Switching capacity	10 Gbps	10 Gbps	10 Gbps	16 Gbps	16 Gbps	16 Gbps	16 Gbps	32 Gbps	48 Gbps	52 Gbps
PoE standards			802.3af, 802.3at			802.3af, 802.3at	802.3af, 802.3at			802.3af, 802.3at
PoE power budget			60 W			68 W	125 W			370 W
PoE capable ports			Ports 1-4, up to 30 W			Ports 1-4, up to 30 W	Ports 1-8, up to 30 W			Ports 1-24, up to 30 W
DIP switch (Energy-Efficient Ethernet (EEE)/Flow Control/Port Isolation and Storm Control)								•	•	
Desktop	•	•	•	•	•	•	•	•	•	•
Rackmountable								•	•	•
Metal enclosure		•	•		•	•	•	•	•	•
Fanless	•	•	•	•	•	•	•	•	•	2 x smart fan
MAC address	8K	2K	2K	4K	8K	4K	8K	8K	8K	8K
Jumbo frame	9720 Bytes	9216 Bytes	9216 Bytes	9720 Bytes	9216 Bytes	9720 Bytes	9216 Bytes	10,000 Bytes	10,000 Bytes	9600 Bytes
802.1p QoS	• (Strict mode)	• (Strict mode)	• (Strict mode)	• (Strict mode)	• (Strict mode)	• (Strict mode)	•	•	•	•
Number of QoS queues	4	4	4	4	4	4		8	8	
IGMP snooping		•			•					
Cable diagnostics	•	•	•	•	•	•	•	•	•	•
D-Link Green	•	•	•	•	•	•	•	•	•	•
802.3az EEE	•	•	•	•	•	•	•	•	•	•
Power supply type	External	External	External	External	External	External	Internal	Internal	Internal	Internal

## SWITCHES



## Smart Switches

*They're called Smart for a reason*

D-Link Smart Switches offer a robust set of Layer 2 and Layer 2+ features and are designed to support your company's most demanding applications. With port densities ranging from 8 to 52, speeds ranging from Fast Ethernet to 10 Gigabit, models with or without PoE, we have the right Smart Switch solution to keep your business running and your budget intact.

Smart switches are attractively priced, easy to set up and configure, and support an essential suite of L2/L2+ switching features. D-Link offers six families of Smart Switches to meet the networking needs of businesses of all sizes.

## What are the benefits of...

### PoE Support?

Power over Ethernet makes network device installation simpler, safer, and less expensive. Whether you're deploying a network of IP Cameras, Wireless APs, IP phones, or any other PoE device, D-Link PoE switches will provide the flexibility, simplicity, safety and cost savings you need for a successful installation.

### 10 Gigabit Connectivity?

10 Gigabit switches offer a low-cost solution to solve the demands for bandwidth. Not only is the cost of installation low, but the cost of network maintenance and management is minimal, since it can be performed by local network administrators. In addition to the cost-reduction benefit, 10 Gigabit Ethernet allows faster switching since it uses the same Ethernet format as slower switches, thus allowing seamless integration of LAN, MAN, and WAN.

### Layer 2+ Support?

Layer 2+ support helps to reduce the pressure of routers and backbone networks through wired speed inter-VLAN routing, improving the overall network efficiency. Further optimisation of the network can be done through L2/L3/L4 Quality of Service (QoS) and Access Control Lists (ACL) to improve network performance as well as security.

### Stacking?

Essentially, stacking enables multiple switches to be seen as a single switch for setup and admin purposes, but also provides more resiliency than uplinked switches. Centralised traffic-path selection mitigates STP issues between switches, and stacking also provides faster bandwidth between switches along with shared power between switches.



SWITCHES

Fast Ethernet  
and Gigabit  
Smart Managed



		Fast Ethernet		Gigabit Ethernet						
		DES-1210-28P	DGS-1210-08P	DGS-1210-16	DGS-1210-24	DGS-1210-24P	DGS-1210-48	DGS-1210-10	DGS-1210-10P	DGS-1210-10MP
HARDWARE	MODEL	DES-1210-28P	DGS-1210-08P	DGS-1210-16	DGS-1210-24	DGS-1210-24P	DGS-1210-48	DGS-1210-10	DGS-1210-10P	DGS-1210-10MP
	Number of Fast Ethernet ports	24								
	Number of Gigabit ports	2	8	16	24	24	48	8	8	8
	Number of Combo 1000BASE-T/SFP ports	2		4	4	4	4			
	Number of SFP ports		2					2	2	2
	Switching capacity	12.8 Gbps	20 Gbps	40 Gbps	56 Gbps	56 Gbps	104 Gbps	20 Gbps	20 Gbps	20 Gbps
	PoE standards	802.3af, 802.3at	802.3af, 802.3at			802.3af, 802.3at			802.3af, 802.3at	802.3af, 802.3at
	PoE power budget	193W	65 W			193 W			65 W	130 W
	PoE capable ports	Port 1-4, up to 30 W Port 5-24, up to 15.4 W	Ports 1-8, up to 30 W			Ports 1-24, up to 30W			Ports 1-8, up to 30 W	Ports 1-8, up to 30 W
	Fanless		•	•	•		•	•	•	•
D-Link Green	•	•	•	•	•	•	•	•	•	
802.3az EEE		•	•	•	•		•	•	•	
Power supply type	Internal	External	Internal	Internal	Internal	Internal	Internal	Internal	External	Internal
L2	MAC address	8K	8K	8K	8K	8K	16K	8K	8K	8K
	802.1D STP, 802.1w RSTP, 802.1s MSTP	802.1D, 802.1w	802.1D, 802.1w	802.1D, 802.1w	802.1D, 802.1w	802.1D, 802.1w	802.1D, 802.1w	•	•	•
	802.3ad, 802.1AX link aggregation	802.3ad	•	•	•	•	•	•	•	•
VLAN	VLAN group (max static)	256	256	256	256	256	256	256	256	256
	Port / MAC / protocol-based VLAN, GVRP		Port	Port	Port	Port	Port	Port	Port	Port
	Asymmetric VLAN	•	•	•	•	•	•	•	•	•
	Auto Voice/Surveillance VLAN	•	•	•	•	•	•	•	•	•
L3	IP interfaces							4	4	4
	IPv6 Core Ready Logo Phase 2	•						•	•	•
	Static route for IPv4/IPv6							124/50	124/50	124/50
QOS	Number of queues per port	4	8	8	8	8	8	8	8	8
	CoS based on contents	•	•	•	•	•	•	•	•	•
	Bandwidth control (min. granularity)	• (64Kbps)	• (16 Kbps)	• (16 Kbps)	• (16 Kbps)	• (16 Kbps)	• (16 Kbps)	• (16 Kbps)	• (16 Kbps)	• (16 Kbps)
SURVEILLANCE MODE	Video Surveillance Mode		•	•	•	•	•	•	•	•
	ONVIF Device Discovery		•	•	•	•	•	•	•	•
	Video Surveillance Topology		•	•	•	•	•	•	•	•
	Video Surveillance Device Information		•	•	•	•	•	•	•	•
ACL	ACL (Ingress / Egress / VLAN-based ACL)	• (Ingress)	• (Ingress)	• (Ingress)	• (Ingress)	• (Ingress)	• (Ingress)	• (Ingress)	• (Ingress)	• (Ingress)
	Based on packet contents	•	•	•	•	•	•	•	•	•
	SSH, SSL (v1/v2/v3)	•	•	•	•	•	•	•	•	•
	IP-MAC-port binding (IMPB)	Smart Binding	•	•	•	•	•	•	•	•
AAA	ARP spoofing	•	•	•	•	•	•	•	•	•
	802.1X access control	•	•	•	•	•	•	•	•	•
MANAGEMENT	RADIUS	•	•	•	•	•	•	•	•	•
	Dual image							•	•	•
	SNMP (v1/v2c/v3), RMON v1	•	•	•	•	•	•	•	•	•
	LLDP-MED	•	•	•	•	•	•	•	•	•
	ICMPv6	•	•	•	•	•	•	•	•	•
Command Line Interface (CLI)	Compact						Compact	Compact	Compact	



SWITCHES

Gigabit Smart Managed



		Gigabit Ethernet						Metro Gigabit Ethernet			
MODEL		DGS-1210-20	DGS-1210-26	DGS-1210-28	DGS-1210-28P	DGS-1210-28MP	DGS-1210-52	DGS-1210-52MP	DGS-1210-20/ME	DGS-1210-28/ME	DGS-1210-28MP/ME
HARDWARE	Number of Gigabit ports	16	24	24	24	24	48	48	16	24	24
	Number of Combo 1000BASE-T/SFP ports	4		4	4	4	4	4			4
	Number of SFP ports		2						4	4	4
	Switching capacity	40 Gbps	52 Gbps	56 Gbps	56 Gbps	56 Gbps	104 Gbps	104 Gbps	40 Gbps	56 Gbps	56 Gbps
	PoE standards				802.3af, 802.3at	802.3af, 802.3at		802.3af, 802.3at			802.3af, 802.3at
	PoE power budget				193 W	370 W		370 W			370 W
	PoE capable ports				Ports 1-24, up to 30W	Ports 1-24, up to 30W		Ports 1-48, up to 30W			Ports 1-24, up to 30W
	6kV Surge protection								All Gigabit Ethernet ports	All Gigabit Ethernet ports	All Gigabit Ethernet ports
	Fanless	•	•	•					•	•	•
	Smart fan				•	•	•	•			•
D-Link Green	•	•	•	•	•	•	•	•	•	•	
802.3az EEE	•	•	•	•	•	•	•	•	•	•	
Power supply type	Internal	Internal	Internal	Internal	Internal	Internal	Internal	Internal	Internal	Internal	
L2	MAC address	8K	8K	8K	8K	8K	16K	16K	16K	16K	16K
	802.1D STP, 802.1w RSTP, 802.1s MSTP	•	•	•	•	•	•	•	•	•	•
	802.3ad, 802.1AX link aggregation	•	•	•	•	•	•	•	•	•	•
	ERPS								•	•	•
VLAN	VLAN group (max static)	256	256	256	256	256	256	256	256	256	256
	Port / MAC / protocol-based VLAN, GVRP	Port	Port	Port	Port	Port	Port	Port	•	•	•
	Port-based Q-in-Q, ISM VLAN								•	•	•
	Asymmetric VLAN	•	•	•	•	•	•	•	•	•	•
Auto Voice/Surveillance VLAN	•	•	•	•	•	•	•	•	•	•	
L3	IP interfaces	4	4	4	4	4	4	4	4	4	4
	IPv6 Core Ready Logo Phase 2	•	•	•	•	•	•	•	•	•	•
	Static route for IPv4/IPv6	124/50	124/50	124/50	124/50	124/50	124/50	124/50	64/32	64/32	64/32
QoS	Number of queues per port	8	8	8	8	8	8	8	8	8	8
	CoS based on contents	•	•	•	•	•	•	•	•	•	•
	Bandwidth control (min. granularity)	• (16 Kbps)	• (16 Kbps)	• (16 Kbps)	• (16 Kbps)	• (64 Kbps)	• (16 Kbps)	• (16 Kbps)	• (64 Kbps)	• (64 Kbps)	• (64 Kbps)
SURVEILLANCE MODE	Video Surveillance Mode	•	•	•	•	•	•	•			
	ONVIF Device Discovery	•	•	•	•	•	•	•			
	Video Surveillance Topology	•	•	•	•	•	•	•			
	Video Surveillance Device Information	•	•	•	•	•	•	•			
ACL	ACL (Ingress / Egress / VLAN-based ACL)	• (Ingress)	• (Ingress)	• (Ingress)	• (Ingress)	• (Ingress)	• (Ingress)	• (Ingress)	• (Ingress)	• (Ingress)	• (Ingress)
	Based on packet contents	•	•	•	•	•	•	•	•	•	•
SECURITY	SSH, SSL (v1/v2/v3)	•	•	•	•	•	•	•	•	•	•
	IP-MAC-port binding (IMPB)	•	•	•	•	•	•	•	•	•	•
	ARP spoofing	•	•	•	•	•	•	•	•	•	•
AAA	802.1X access control	•	•	•	•	•	•	•	•	•	•
	RADIUS	•	•	•	•	•	•	•	•	•	•
MANAGEMENT	Dual image	•	•	•	•	•	•	•			
	SNMP (v1/v2c/v3), RMON v1	•	•	•	•	•	•	•	•	•	•
	LLDP-MED	•	•	•	•	•	•	•	•	•	•
	ICMPv6	•	•	•	•	•	•	•	•	•	•
	802.3ah								•	•	•
Command Line Interface (CLI)	Compact	Compact	Compact	Compact	Compact	Compact	Compact	Full	Full	Full	
Console port								RJ45	RJ45	RJ45	



## SWITCHES



## 10 Gigabit Connectivity

*Performance and speed*

Business networks of all sizes are faced daily with an increasing amount of data that needs to be processed, stored, backed up and accessible. In many cases, Gigabit Ethernet just can't keep up anymore. With 10 Gigabit Ethernet pricing now more affordable than ever, IT managers are seizing the opportunity to upgrade their networks and keep pace with these growing bandwidth demands. Whether the needs are at the network edge, in the distribution layer, or the core, D-Link has the right solution for your network. From economical Smart Switches to feature-rich fully managed L2/L3 Aggregation Switches, our equipment can relieve your bandwidth bottlenecks and keep data traffic flowing at the fastest possible speeds.

## Copper or Fibre, for Uplink or Stacking

10Gbps Ethernet is no longer restricted to fibre optic media only. Recent advancements in chip design have made 10GBASE-T (10Gbps over copper) more economical and easier to deploy than ever before. Direct Attach Copper (DAC) is also a popular choice, especially for shorter distance, latency-sensitive applications.

Media	Type	Distance	Switch Interface	Typical Latency	Typical Application
Copper	DAC (Twinax)	Up to 7m	SFP+	Better	Server/Rack
	CAT-6	~30m	RJ-45	Good	SMB Aggregation Switching
	CAT-6a CAT-7	Up to 100m			
Fibre	MMF	Up to 400m	SFP+	Best	Campus Network
	SMF	10km+			

## What's 10 Gigabit Ethernet good for?

### 1 Edge Switch

*Small office network running specialised applications*

### 2 Distribution Switch

*Small/medium office network*

### 3 Aggregation Switch

*Enterprise/campus network*

### 4 Core Switch

*Medium business/small enterprise office network*

### 5 Top-of-Rack Switch – small office

*Small office server closet*

### 6 Top-of-Rack Switch

*Enterprise/campus data center*

SWITCHES

10 Gigabit Smart Managed

10 Gigabit Ethernet



	MODEL	DXS-1100-10TS	DXS-1100-16SC	DXS-1210-10TS	DXS-1210-12TC	DXS-1210-12SC	DXS-1210-16TC
HARDWARE	Number of Gigabit ports			8	8	8	12
	Number of 10GBASE-T ports	8					
	Number of Combo 1000BASE-T/SFP ports			8	8	8	12
	Number of Combo 10GBASE-T/SFP+ ports		2		2	2	2
	Number of SFP ports						
	Number of 10G SFP+ ports	2	14	2	2	10	2
	Switching capacity	200 Gbps	320 Gbps	200 Gbps	240 Gbps	240 Gbps	320 Gbps
	Smart fan	2	2	2	2	2	2
	D-Link Green	•	•	•	•	•	•
	802.3az EEE	•	•	•	•	•	•
Power supply type	Internal	Internal	Internal	Internal	Internal	Internal	
L2	MAC address	16K	16K	16K	16K	16K	16K
	802.1D STP, 802.1w RSTP, 802.1s MSTP	•	•	•	•	•	•
	802.3ad, 802.1AX link aggregation	•	•	•	•	•	•
VLAN	VLAN group (max static)	4K	4K	4K	4K	4K	4K
	Port / MAC / protocol-based VLAN, GVRP	Port	Port	Port, GVRP	Port, GVRP	Port, GVRP	Port, GVRP
	Asymmetric VLAN	•	•	•	•	•	•
	Auto Voice/Surveillance VLAN	•	•	•	•	•	•
L3	IP interfaces			16	16	16	16
	IPv6 Core Ready Logo Phase 2			•	•	•	•
	Routing table size			768	768	768	768
	Static route for IPv4/IPv6			32 / 32	32 / 32	32 / 32	32 / 32
QoS	Number of queues per port	8	8	8	8	8	8
	CoS based on contents			•	•	•	•
ACL	Bandwidth control (min. granularity)	• (64 Kbps)	• (64 Kbps)	• (64 Kbps)	• (64 Kbps)	• (64 Kbps)	• (64 Kbps)
	ACL (Ingress / Egress / VLAN-based ACL)			• (Ingress/VLAN)	• (Ingress/VLAN)	• (Ingress/VLAN)	• (Ingress/VLAN)
SECURITY	Based on packet contents			•	•	•	•
	SSH, SSL (v1/v2/v3)	SSL (v1/v2/v3)	SSL (v1/v2/v3)	•	•	•	•
	IP-MAC-port binding (IMPB)			•	•	•	•
MANAGEMENT/AAA	ARP spoofing	•	•	•	•	•	•
	802.1X access control			•	•	•	•
	RADIUS			•	•	•	•
	SNMP (v1/v2c/v3), RMON v1	•	•	•	•	•	•
	LLDP-MED	•	•	•	•	•	•
	ICMPv6	•	•	•	•	•	•
Command Line Interface (CLI)			Full	Full	Full	Full	
Console port			RJ45	RJ45	RJ45	RJ45	

Gigabit Layer 2 Managed

Gigabit Ethernet



	MODEL	DGS-3000-28LP	DGS-3000-28X	DGS-3000-28XMP	DGS-3000-52X
HARDWARE	Number of Gigabit ports	24	24	24	48
	Number of SFP ports	4			
	Number of 10G SFP+ ports		4	4	4
	Switching capacity	56 Gbps	128 Gbps	128 Gbps	174 Gbps
	PoE standards	802.3af, 802.3at		802.3af, 802.3at	
	PoE power budget	193 W		370 W	
	PoE capable ports	Ports 1-24, up to 30 W		Ports 1-24, up to 30 W	
	Power supply type	Internal	Internal	Internal	Internal
	Virtual stacking (device)	• (32)	• (32)	• (32)	• (32)
	MAC address	16K	16K	16K	16K
L2	802.1D STP, 802.1w RSTP, 802.1s MSTP	•	•	•	•
	Ethernet ring protection switching (ERPS)	•	•	•	•
	802.3ad, 802.1AX link aggregation	•	•	•	•
VLAN	VLAN group (max static)	4K	4K	4K	4K
	Port / MAC / protocol-based VLAN, GVRP	•	•	•	•
	Port-based double VLAN	•	•	•	•
	ISM VLAN	•	•	•	•
L3	Voice VLAN	•	•	•	•
	IPv4/IPv6 routing table				
	IPv4/IPv6 forwarding table				
	IP interfaces	16	16	16	16
	IPv6 Ready Logo, IPv6 neighbour discovery (ND)				
	Static route for IPv4/IPv6	64 / 32	64 / 32	64 / 32	64 / 32
QoS	RIP v1/v2, RIPng				
	Number of queues per port	8	8	8	8
ACL	CoS based on contents	•	•	•	•
	Bandwidth control (min. granularity)	• (64Kbps)	• (64Kbps)	• (64Kbps)	• (64Kbps)
	Time-based QoS				
SECURITY	ACL (Ingress / Egress / VLAN-based)	• (Ingress/VLAN)	• (Ingress/VLAN)	• (Ingress/VLAN)	• (Ingress/VLAN)
	Based on packet contents	•	•	•	•
	Time-based ACL	•	•	•	•
MANAGEMENT/AAA	SSH, SSL (v1/v2/v3)	•	•	•	•
	IP-MAC-port binding (IMPB)	•	•	•	•
	ARP spoofing, BPDU attack protection	•	•	•	•
	802.1X access control	•	•	•	•
MANAGEMENT	Microsoft NAP support	•	•	•	•
	RADIUS/TACACS+ authentication	•	•	•	•
	SNMP (v1/v2c/v3), RMON v1/v2	•	•	•	•
	sFlow	•	•	•	•
	LLDP-MED	•	•	•	•
	ICMPv6				
802.3ah, 802.1ag, ITU-T.Y.1731	•	•	•	•	
Command Line Interface (CLI)	Full	Full	Full	Full	
Console port	RJ45	RJ45	RJ45	RJ45	

SWITCHES

Gigabit Layer 3 Managed with 10G Uplinks

Gigabit Ethernet with 10G Uplinks



	MODEL	DGS-3130-30TS	DGS-3130-30PS	DGS-3130-30S	DGS-3130-54TS	DGS-3130-54PS	DGS-3130-54S
HARDWARE	Number of Gigabit ports	24	24		48	48	
	Number of SFP ports			24			48
	Number of 10GBASE-T ports	2	2	2	2	2	2
	Number of 10G SFP+ ports	4	4	4	4	4	4
	Switching capacity	168 Gbps	168 Gbps	168 Gbps	216 Gbps	216 Gbps	216 Gbps
	PoE standards		802.3af, 802.3at			802.3af, 802.3at	
	PoE power budget		370 W (740 W with RPS)			370 W (740 W with RPS)	
	PoE capable ports		Ports 1-24, up to 30 W			Ports 1-48, up to 30 W	
	Power supply type	Internal	Internal	Internal	Internal	Internal	Internal
	Physical stacking (device / max bandwidth)	• (9'/80G)	• (9'/80G)	• (9'/80G)	• (9'/80G)	• (9'/80G)	• (9'/80G)
Virtual stacking (device)	• (32)	• (32)	• (32)	• (32)	• (32)	• (32)	
L2	MAC address	Up to 16K	Up to 16K	Up to 16K	Up to 16K	Up to 16K	Up to 16K
	802.1D STP, 802.1w RSTP, 802.1s MSTP	•	•	•	•	•	•
	Ethernet ring protection switching (ERPS)	•	•	•	•	•	•
VLAN	802.3ad, 802.1AX link aggregation	•	•	•	•	•	•
	VLAN group (max static)	4K	4K	4K	4K	4K	4K
	Port / MAC / protocol-based VLAN, GVRP	•	•	•	•	•	•
	Asymmetric, Private VLAN	•	•	•	•	•	•
L3	ISM, Super, Voice VLAN	•	•	•	•	•	•
	IPV4/IPV6 routing table	1024 / 512	1024 / 512	1024 / 512	1024 / 512	1024 / 512	1024 / 512
	IPV4/IPV6 forwarding table	2048 / 1024	2048 / 1024	2048 / 1024	2048 / 1024	2048 / 1024	2048 / 1024
	IP interfaces	16	16	16	16	16	16
	IPV6 neighbour discovery (ND)	•	•	•	•	•	•
	Static route for IPV4/IPV6	1024 / 512	1024 / 512	1024 / 512	1024 / 512	1024 / 512	1024 / 512
	VRRP	•	•	•	•	•	•
	Multicasting	•	•	•	•	•	•
	RIP v1/v2, RIPng	•	•	•	•	•	•
	OSPFv2/v3	• <sup>2</sup>	• <sup>2</sup>	• <sup>2</sup>	• <sup>2</sup>	• <sup>2</sup>	• <sup>2</sup>
QoS	Number of queues per port	8	8	8	8	8	8
	CoS based on contents	•	•	•	•	•	•
	Bandwidth control (min. granularity)	• (8Kbps)	• (8Kbps)	• (8Kbps)	• (8Kbps)	• (8Kbps)	• (8Kbps)
ACL	Single/two rate Three Colour Marker	•	•	•	•	•	•
	ACL (Ingress / Egress / VLAN-based)	•	•	•	•	•	•
SECURITY	Based on packet contents	•	•	•	•	•	•
	SSH, SSL (v1/v2/v3)	•	•	•	•	•	•
	IP-MAC-port binding (IMPB)	•	•	•	•	•	•
AAA	ARP spoofing, BPDU attack protection	•	•	•	•	•	•
	802.1X access control, Microsoft NAP	•	•	•	•	•	•
	RADIUS/TACACS+ authentication	•	•	•	•	•	•
MANAGEMENT	SNMP (v1/v2c/v3), RMON v1/v2, sFlow	•	•	•	•	•	•
	LLDP-MED	•	•	•	•	•	•
	ICMPv6	•	•	•	•	•	•
	802.3ah, 802.1ag, ITU-T.Y.1731	•	•	•	•	•	•
Command Line Interface (CLI)	Full	Full	Full	Full	Full	Full	
Out-of-Band Console/Management port	RJ45	RJ45	RJ45	RJ45	RJ45	RJ45	

<sup>1</sup> When stacking the DGS-3130-30TS/30S/30PS models, the stacking cost is 1 per unit so the maximum units per stack is 9.

When stacking the DGS-3130-54TS/54S/54PS models, the stacking cost is 2 per unit so the maximum units per stack is 6.

<sup>2</sup> When stacking different models in the same stack, switches can be stacked up to a maximum of 12 stacking cost per stack. For example: 2 x DGS-3130-30TS (2 stacking cost) + 2 x DGS-3130-30S (2 stacking cost) + 4 x DGS-3130-54TS (8 stacking cost) consumes a total stacking cost of 12 (2+2+8).

<sup>3</sup> Available in future firmware update



SWITCHES

10/25/40/100G  
Layer 3 Managed /  
Data Center

10 Gigabit Ethernet | 10/25/40/100 Gigabit Ethernet



	DXS-3400-24TC	DXS-3400-24SC	DXS-3600-32S/SI	DXS-3600 EI	DXS-5000-54S/SI	DQS-5000-32S/SI	DQS-5000-32Q28/SI	DQS-5000-54SQ28/SI	
HARDWARE	MODEL	DXS-3400-24TC	DXS-3400-24SC	DXS-3600-32S/SI	DXS-3600 EI	DXS-5000-54S/SI	DQS-5000-32S/SI	DQS-5000-32Q28/SI	DQS-5000-54SQ28/SI
	Number of Gigabit ports			8 (with DXS-3600-EM-8T)	8 (with DXS-3600-EM-8T)				
	Number of 10GBASE-T ports	20		4 (with DXS-3600-EM-4XT)	4 (with DXS-3600-EM-4XT)				
	Number of Combo 10GBASE-T/SFP+ ports	4	4						
	Number of 120G stacking ports			2 (with DXS-3600-EM-Stack)	2 (with DXS-3600-EM-Stack)				
	Number of 100G QSFP28 ports							32	6
	Number of 40G QSFP+ ports			4 (with DXS-3600-EM-4QXS)	4 (with DXS-3600-EM-4QXS)	6	32		
	Number of 25G SFP28 ports								48
	Number of 10G SFP+ ports		20	24	24	48			
	Number of open slots			1	1				
Switching capacity	480 Gbps	480 Gbps	960 Gbps	960 Gbps	1.44 Tbps	2.56 Tbps	6.4 Tbps	3.6 Tbps	
Power supply redundancy	1+1	1+1	1+1	1+1	1+1	1+1	1+1	1+1	
Physical stacking (device / max bandwidth)	• (4/80G)	• (4/80G)	• (4/480G)	• (4/480G)	MLAG	MLAG	MLAG	MLAG	
Virtual stacking (device)	• (32)	• (32)	• (32)	• (32)					
MAC address	48K	48K	128K	128K	288K	288K	40K	40K	
L2	802.1D STP, 802.1w RSTP, 802.1s MSTP	•	•	•	•	•	•	•	
	Ethernet ring protection switching (ERPS)	•	•	•	•				
	802.3ad, 802.1AX link aggregation	•	•	•	•	• (802.3ad only)	• (802.3ad only)	• (802.3ad only)	• (802.3ad only)
VLAN	VLAN group (max static)	4K	4K	4K	4K	4K	4K	4K	
	Port / MAC / protocol-based VLAN, GVRP	•	•	•	•	• (port-based only)	• (port-based only)	• (port-based only)	• (port-based only)
	Port-based, selective double VLAN	•	•	•	•	•	•	•	
	ISM, Super, Voice VLAN	•	•	• (Super/ISM VLAN)	• (Super/ISM VLAN)	• (ISM VLAN)	• (ISM VLAN)	• (ISM VLAN)	• (ISM VLAN)
Data/SDN	VXLAN								
	ONIE								
	OpenFlow					v1.0/1.3	v1.0/1.3	v1.0/1.3	
L3	DCB - 802.1Qbb, 802.1Qaz	•	•	•	•	•	•	•	
	IPv4/IPv6 routing table	4K / 1K	4K / 1K	16K / 8K	16K / 8K	8K / 2K	8K / 2K	8K / 2K	8K / 2K
	IPv4/IPv6 forwarding table	32K / 16K	32K / 16K	8K / 4K	8K / 4K	2K / 2K	2K / 2K	2K / 2K	2K / 2K
	IP interfaces	256	256	256	256	128	128	128	128
	Static route for IPv4/IPv6	256 / 128	256 / 128	1K / 512	1K / 512	64 / 64	64 / 64	64 / 64	64 / 64
	IPv6 tunneling					•	•	•	•
	Multicasting					•	•	•	•
	PIM-DM/SM, DVMRPv3					•	•	•	•
	RIP v1/v2, RIPng, MPLS, VPLS	•	•						
	OSPFv2/v3, BGP4/BGP4+				• (OSPFv2/v3, BGP4)	•	•	•	•
QoS	Number of queues per port	8	8	8	8	8	8	8	
	CoS based on contents	•	•	•	•	•	•	•	
	Bandwidth control (min. granularity)	• (64Kbps)	• (64Kbps)	• (8Kbps)	• (8Kbps)	• (1% of port speed)	• (1% of port speed)	• (1% of port speed)	• (1% of port speed)
ACL	Single/two rate Three Colour Marker								
	ACL (Ingress / Egress / VLAN-based)	•	•	•	•	•	•	•	
SECURITY	Based on packet contents	•	•	•	•				
	SSH, SSL (v1/v2/v3)	•	•	•	•	• (SSH only)	• (SSH only)	• (SSH only)	• (SSH only)
	IP-MAC-port binding (IMPB)	•	•	•	•	•	•	•	
	ARP spoofing, BPDU attack protection	•	•	•	•	• (BPDU attack protection only)	• (BPDU attack protection only)	• (BPDU attack protection only)	• (BPDU attack protection only)
AAA	802.1X access control, Microsoft NAP	•	•	•	•	• (802.1X access control only)	• (802.1X access control only)	• (802.1X access control only)	• (802.1X access control only)
	RADIUS/TACACS+ authentication	•	•	•	•	•	•	•	
MANAGEMENT	SNMP (v1/v2c/v3), RMON v1/v2, sFlow	•	•	• (excl. sFlow)	• (excl. sFlow)	•	•	•	
	LLDP-MED	•	•	•	•	•	•	•	
	ICMPv6	•	•	•	•	•	•	•	
	802.3ah, 802.1ag, ITU-T Y.1731	•	•	•	•				
	Command Line Interface (CLI)	Full	Full	Full	Full	Full	Full	Full	
Out-of-Band Console/Management port	RJ45	RJ45	RJ45		Mini-USB	RJ45	RJ45	Mini-USB	

SWITCH ACCESSORIES

SFP/SFP+ Transceivers

Fast Ethernet SFP Transceivers



MODEL	DEM-211
Standard	IEEE 802.3u 100 BASE-FX
Connector	Duplex LC
Cable Type (Maximum Distance)	Single-Mode
	Multi-Mode
Wavelength	1310 nm
Power	3.3 V
Hot-Pluggable	•

Gigabit Ethernet SFP Transceivers



MODEL	DGS-712	DEM-310GT	DEM-311GT
Standard	IEEE 802.3ab 1000BASE-T	IEEE 802.3z 1000BASE-LX	IEEE 802.3z 1000BASE-SX
Connector	RJ45	Duplex LC	Duplex LC
Cable Type (Maximum Distance)	Single-Mode	9/125 µm fibre (10 km)	
	Multi-Mode		50/125 µm fibre (550 m) 62.5/125 µm fibre (220 m)
	Cat	Cat5, Cat5e, Cat6	
Wavelength		1310 nm	850 nm
Power	3.3 V	3.3 V	3.3 V
Hot-Pluggable	•	•	•

10/40 Gigabit Ethernet SFP+/QSFP+ Transceivers



MODEL	DEM-410T	DEM-431XT	DEM-432XT	DEM-QX01Q-SR4	DEM-QX10Q-LR4
Standard	IEEE 802.3an 10GBase-T	IEEE 802.3ae 10GBase-SR	IEEE 802.3ae 10GBase-LR	40G BASE-SR4	40G BASE-LR4
Connector	RJ45	Duplex LC	Duplex LC	MPO	Duplex LC
Cable Type (Maximum Distance)	Single-Mode		9/125 µm fibre (10 km)		9/125 µm fibre (10 km)
	Multi-Mode		50/125 µm fibre (OM2-82 m, OM3-300 m), 62.5/125 µm fibre (OM1-33m)	50/125 µm fibre Single 1x12 MPO receptacle (female) (OM3 MMF: 100 m, OM4 MMF: 150 m)	
	Cat	Cat5e, Cat6a (30 m)			
Wavelength		850 nm	1310 nm	850 nm	1310 nm
Power	3.3 V	3.3 V	3.3 V	3.3 V	3.3 V
Hot-Pluggable	•	•	•	•	•

Switch Cables



MODEL	DEM-CB50/100/300	DEM-CB50CXP	DEM-CB100S/300S	DEM-CB100QXS/300QXS	DEM-CB100QXS-4XS
Cable Series Type	InfiniBand	CXP Direct Attach	SFP+ Direct Attach	QSFP+ Direct Attach	QSFP+ Direct Attach
Standard	IEEE802.3ak 10GBase-CX4	SFP MSA	SFP MSA	SFP MSA	SFP MSA
Device Rate	10 Gbps	120 Gbps	10 Gbps	40 Gbps	40 Gbps
Connector Type	Screw-Type at Both Ends	CXP Cable Assembly	SFP+ Cable Assembly	QSFP+ Cable Assembly	QSFP+ to four 10G SFP+ Cable Assembly
Wire AWG	28	30	30	30	30
Minimum Cable Bend Radius		49 mm	23.5 mm	32 mm	23.5 mm
Cable Length	50/100/300 cm	50 cm	100/300 cm	100/300 cm	100 cm
Voltage	30 V AC	30 V AC	30 V AC	30 V AC	30 V AC
Current	0.5 A	0.5 A	0.5 A	0.5 A	0.5 A
Operating Temperature	-40°C to 85°C	-40°C to 85°C	-40°C to 85°C	-40°C to 85°C	-40°C to 85°C
Connectivity	Physical Stacking Cable or Uplink Cable for DGS-3120 Series	Physical Stacking Cable for DXS-3600-32S Switch's DXS-3600-EM-Stack Module	Recommended for use only with D-Link Switching Products	Recommended for use only with D-Link Switching Products	Recommended for use only with D-Link Switching Products

Ethernet Network Adapters



MODEL	DGE-528T	DXE-820T
Data Transfer Rate	Gigabit	10 Gigabit
Number of ports	1	2
Standards	• IEEE 802.3ab 1000BASE-T • IEEE 802.3u 100BASE-TX	• IEEE 802.3an 10GBase-T • IEEE 802.3ab 1000BASE-T • IEEE 802.3u 100BASE-TX
Interface Slot	PCI 2.3	PCI Express x8 2.0, 5 GT/s compliant
Smart Load Balancing		•
Link Aggregation		802.3ad
Energy Efficient Ethernet		802.3az



## SWITCH ACCESSORIES

### Redundant Power Supplies



MODEL	DPS-500A	DPS-700	DXS-PWR300AC
Output Power	140 W	589 W	300 W
Input Power	90 to 264 V AC	90 to 264 V AC	85 to 264 V AC
Dimensions	172 x 257 x 43 mm	441 x 139 x 44 mm	275 x 79 x 40 mm
Mounting Options (see adjacent table)	DPS-800	19in Rack, 1U	N/A



MODEL	DPS-800
Number of Redundant Power Supply Slots	2
Form Factor	19in Rack, 1.5U
Compatible with Redundant Power Supplies	DPS-200A, DPS-500A

COMPATIBLE SWITCHES	DPS-500A	DPS-700	DXS-PWR300AC
DGS-1510-52XMP		•	
DGS-3000-28LP	•		
DGS-3000-28X	•		
DGS-3000-28XMP	•		
DGS-3000-52X	•		
DGS-3130-30TS	•		
DGS-3130-30S	•		
DGS-3130-30PS		•	
DGS-3130-54TS	•		
DGS-3130-54S	•		
DGS-3130-54PS		•	
DGS-3630-28SC	•		
DGS-3630-28TC	•		
DGS-3630-28PC		•	
DGS-3630-52TC	•		
DGS-3630-52PC		•	
DXS-3400-24TC			•
DXS-3400-24SC			•
DXS-3600-32S/SI			•

### Media Convertors



MEDIA CONVERTERS	DMC-300SC	DMC-515SC	DMC-700SC	DMC-810SC	DMC-G01LC
Standards	10/100BASE-TX 100BASE-TX	10/100BASE-TX 100BASE-TX	1000BASE-T 1000BASE-SX	100BASE-TX 1000BASE-LX	1000BASE-T SFP
Connectors	SC / RJ45	SC / RJ45	SC / RJ45	SC / RJ45	SFP / RJ45
Data Rate	100 Mbps	100 Mbps	1 Gbps	1 Gbps	1 Gbps
Fibre Type	Multi-Mode	Single-Mode	Multi-Mode	Single-Mode	Dependent of SFP
Maximum Distance	2 km	15 km	550 m	20 km	Dependent of SFP



CHASSIS AND ACCESSORIES	DMC-1000	DMC-1001
Description	16-Slot Media Converter Chassis with Internal Power Supply	Redundant Power Supply for DMC-1000

### Power over Ethernet (PoE) Adapter / Extender

#### DPE-101GI 1-Port Gigabit PoE Injector



- Main Features**
- Use without a PoE switch
  - Supply power to PoE devices
- Physical Features**
- Maximum power input 48 V
  - Gigabit speed
  - Supports 802.3af, up to 15.4 W

#### DPE-301GI Gigabit PoE+ Injector



- Main Features**
- Use without a PoE switch
  - Supply power to PoE devices
- Physical Features**
- Maximum power input 55 V
  - Gigabit speed
  - Supports 802.3at/af, up to 30 W

#### DPE-301GS Gigabit PoE+ Splitter



- Main Features**
- Add PoE to non-PoE devices
  - Works with PoE switch or injector
- Physical Features**
- 5 V, 9V, or 12 V DC output
  - Gigabit speed
  - Supports 802.3at/af, up to 30 W

#### DPE-311GI Gigabit Passive PoE Injector



- Main Features**
- Use without a PoE switch
  - Supply power to compatible PoE devices
- Physical Features**
- Maximum power input 55 V
  - Gigabit speed
  - Supports up to 30 W
  - Overcurrent protection

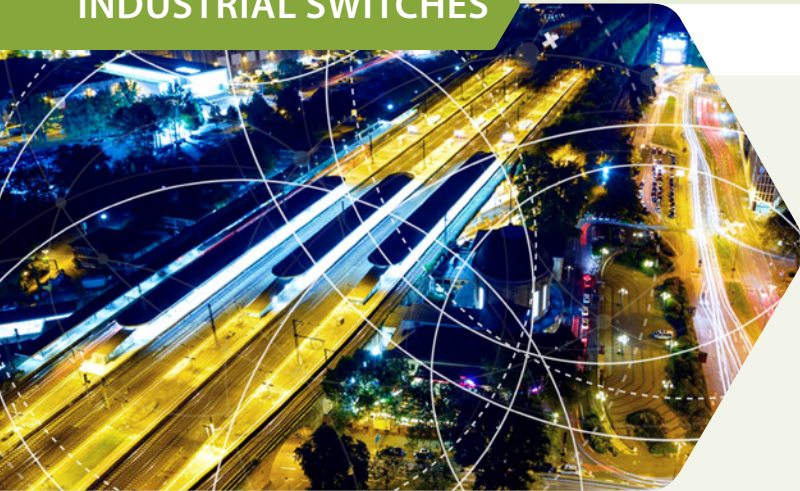
#### DPE-302GE 2-Port Gigabit PoE Extender



- Main Features**
- Extends PoE connection up to 500 m\*
  - Multiple mounting options
- Physical Features**
- 2 x Gigabit output ports
  - Powered by PoE
  - Up to 60°C operating temperature
  - Supports 802.3at/af, up to 30 W

\* With multiple units

INDUSTRIAL SWITCHES



Designed for a more connected future

**1 Rugged, Hardened Design**

*Design to operate in wide temperature ranges, vibration, shock, allowing the switches to be deployed in enclosures or cabinets in outdoor locations*

**2 High Availability**

*Comprehensive network redundancy features with fast fault recovery, together with advanced security features provides industrial-grade reliability and protection*

**3 Flexible Options**

*Wide selection of port density, media and PoE provides customer with the flexibility to choose the right switch that best fits their requirement*

**Industrial Ethernet Switches**

*Rugged and reliable*

D-Link's Industrial Ethernet Switches are designed specifically to withstand wide temperature range, vibrations and shock. These rugged, yet easy to deploy, switches have superior environmental specification compared to those of commercial network switches. With its hardened design combined with high availability network features, these switches form vital parts of any network infrastructure facilitating the increasing demand for smart cities, city-wide surveillance and wireless connectivity.



DIS-100E/100G Series Industrial Fast Ethernet / Gigabit Unmanaged Switches for edge deployment	DIS-200G Series Industrial Gigabit Smart Managed Switches for aggregation deployment	DIS-300G Series Industrial Gigabit Managed Switches for aggregation deployment	DIS-700G Series Industrial Layer 2+ Gigabit Managed Switch for core deployment
Plug and play; compact size	Cost-effective; compact size	High performance; compact size	High performance, dual redundant DC input
-40 to 75° operating temperature	-40 to 65° operating temperature	-40 to 75° operating temperature	-40 to 75°C operating temperature
DIN-Rail mounting	DIN-Rail mounting	DIN-Rail mounting	Rack mounting
5-port	12-port	8/12/14-port	24-port SFP + 4-port SFP+
Redundant power inputs	Optional PoE 802.3af/at support	Optional PoE 802.3af/at support	Supports intelligent Quality of Service (QoS)
Optional PoE 802.3af/at support (DIS-100G)	VLAN support for added security	VLAN support for added security	Optimisation of network traffic

# INDUSTRIAL SWITCHES

## Industrial Gigabit Switches



	MODEL	DIS-100E-5W	DIS-100E-8W	DIS-100G-5W	DIS-100G-5SW	DIS-100G-5PSW	DIS-200G-12S	DIS-200G-12PS	DIS-300G-12SW	DIS-300G-8PSW	DIS-300G-14PSW	DIS-700G-28XS	
HARDWARE	Number of Fast Ethernet ports	5	8										
	Number of Gigabit ports			5	4	4	10	10	8	6	10		
	Number of SFP ports				1	1	2	2	4	2	4	24	
	Number of 10G SFP+ ports											4	
	PoE standards					802.3af, 802.3at		802.3af, 802.3at		802.3af, 802.3at	802.3af, 802.3at		
	PoE power budget					120 W		240 W		120 W	240 W		
	PoE capable ports					Ports 1-4, up to 30 W		Ports 1-8, up to 30 W		Ports 1-4, up to 30 W	Ports 1-8, up to 60 W Ports 3-8, up to 30 W		
	Input voltage range	12-58 VDC	12-58 VDC	12-58 VDC	12-58 VDC	12-58 VDC, 54-58V for PoE+, 48-58V for PoE	12-48 VDC	48-58 VDC	12-58 VDC	48-58 VDC (54~58V VDC for PoE+)	48-58 VDC (54~58V VDC for PoE+)	Dual 20-58 VDC	
	Compatible power supplies	DIS-H30-24, DIS-H60-24, DIS-N240-48, DIS-N480-48	DIS-H30-24, DIS-H60-24, DIS-N240-48, DIS-N480-48	DIS-H30-24, DIS-H60-24, DIS-N240-48, DIS-N480-48	DIS-H30-24, DIS-H60-24, DIS-N240-48, DIS-N480-48	DIS-N240-48, DIS-N480-48	DIS-H30-24, DIS-H60-24,	DIS-N240-48, DIS-N480-48	DIS-H30-24, DIS-H60-24, DIS-N240-48, DIS-N480-48	DIS-N240-48, DIS-N480-48	DIS-N240-48, DIS-N480-48	Built-in	
	Redundant power input option	-	-	-	-	-	-	-	-	-	-	-	
	Mounting option	Din-rail and wall	Din-rail and wall	Din-rail and wall	Din-rail and wall	Din-rail and wall	Din-rail and wall	Din-rail and wall	Din-rail and wall	Din-rail and wall	Din-rail and wall	19" rack mount	
	Operating temperature range	-40° to 75°C	-40° to 75°C	-40° to 75°C	-40° to 75°C	-40° to 75°C	-40° to 65°C	-40° to 65°C	-40 to +75°C	-40 to +75°C	-40 to +75°C	-40 to +75°C	
	Vibration, shock and freefall certification	Vibration: IEC60068-2-6; Shock: IEC60068-2-27; Free Fall: IEC60068-2-32											
	NEMA-TS2, EN50121-4 (compliant)												
	EMC certification	FCC Part 15, CISPR 22 (EN55022) Class A, ESD: IEC61000-4-2, Radiated RF (RS): IEC61000-4-3, EFT: IEC61000-4-4, Surge: IEC61000-4-5, Conducted RF (CS): IEC61000-4-6											
Ingress protection	IP30												
L2	MAC address	1K	1K	2K	2K	2K	8K	8K	8K	8K	8K	8K	
	802.1D STP, 802.1w RSTP, 802.1s MSTP												
	Fast Failover Protection Rings						• (ERPS, 50-200ms)	• (ERPS, 50-200ms)	• (<20ms)	• (<20ms)	• (<20ms)	• (<20ms)	
802.3ad, 802.1AX link aggregation													
VLAN	VLAN group (max static)						128	128	256	1024	1024	2048	
	Port/MAC/protocol-based VLAN, GVRP						Port-based, GVRP	Port-based, GVRP					
	Port-based double VLAN												
	Auto-Servillance, Voice VLAN												
QoS	Multicast protocols						IGMP v1/v2, IGMP snooping	IGMP v1/v2, IGMP snooping	IGMP v1/v2, IGMP snooping	IGMP v1/v2, IGMP snooping	IGMP v1/v2, IGMP snooping	IGMP v1/v2/v3, IGMP snooping	
	802.1p												
	Policy-based access control engine											Multi-layer ACL	
	Number of queues per port			4	4	4	4	4	8	8	8	8	
SECURITY	Traffic shaper						Port-based	Port-based	Port-based	Port-based	Port-based	Port/queue-based shaping & scheduling	
	Traffic policer											TTCM	
	Multicast/Broadcast/Flooding Storm Control												
AAA	Access control						Web-based	Web-based	IP/MAC/policy-based	IP/MAC/policy-based	IP/MAC/policy-based	IP/MAC/policy-based	
	802.1X access control												
	RADIUS/TACACS+ authentication						RADIUS only	RADIUS only				RADIUS only	
MANAGEMENT	SNMP (v1/v2/v3), RMON v1						SNMP only	SNMP only					
	Web-based management												
	Command line interface (CLI)												
	HTTPs, SSH						HTTPs only	HTTPs only					
	Syslog												
	Command Line Interface (CLI)						Full	Full	Full	Full	Full	Full	
Console port						RJ45	RJ45	RJ45	RJ45	RJ45	RJ45		



MODEL	DWM-312 4G LTE M2M Router
Mobile networks	LTE Cat./UMTS/HSPA
Maximum speed	50 Mbps down / 50 Mbps up (LTE)
Device interface	<ul style="list-style-type: none"> <li>1 x 10/100 Fast Ethernet WAN port</li> <li>1 x 5.5 mm DC input</li> <li>2 x SMA (antenna connectors)</li> <li>Dual Micro-SIM slots</li> </ul>
Advanced features	<ul style="list-style-type: none"> <li>QoS engine (Quality of Service)</li> <li>L2TP/PPTP/IPsec VPN Client/Server modes</li> <li>SNMP and D-View 7 Support</li> <li>Firmware over the air (FOTA) upgrades</li> <li>Web-based UI</li> <li>TR-069 CPE WAN Management Protocol</li> </ul>
Power input	DC 5V/2A ~ 18V/0.7A
Operating temp.	-20 to 60 °C

MODEL	ACCESSORIES
DIS-H30-24	30W 24VDC Ultra Slim DIN Rail PSU <ul style="list-style-type: none"> <li>Input: 85 ~ 264VAC</li> <li>Output: 21.6 ~ 29V DC</li> <li>Din rail TS-35/7.5 or 15 mountable</li> <li>-30~70°C operating temperature</li> </ul>
DIS-H60-24	60W 24VDC Ultra Slim DIN Rail PSU <ul style="list-style-type: none"> <li>Input: 85 ~ 264VAC</li> <li>Output: 21.6 ~ 29V DC</li> <li>Din rail TS-35/7.5 or 15 mountable</li> <li>-30~70°C operating temperature</li> </ul>
DIS-N240-48	240W 48VDC DIN Rail PSU <ul style="list-style-type: none"> <li>Input: 90 ~ 264VAC</li> <li>Output: 48 ~ 55V DC</li> <li>Din rail TS-35/7.5 or 15 mountable</li> <li>-20~70°C operating temperature</li> </ul>
DIS-N480-48	480W 48VDC DIN Rail PSU <ul style="list-style-type: none"> <li>Input: 90 ~ 264VAC</li> <li>Output: 48 ~ 55V DC</li> <li>Din rail TS-35/7.5 or 15 mountable</li> <li>-20~70°C operating temperature</li> </ul>
DIS-S301SX	1-port Mini-GBIC SFP to 1000BaseSX Multi-Mode Fibre Transceiver <ul style="list-style-type: none"> <li>up to 550 m</li> <li>-40~85°C operating temperature</li> </ul>
DIS-S302SX	1-port Mini-GBIC SFP to 1000BaseSX Multi-Mode Fibre Transceiver <ul style="list-style-type: none"> <li>up to 2 km</li> <li>-40~85°C operating temperature</li> </ul>
DIS-S310LX	1-port Mini-GBIC SFP to 1000BaseLX Single-Mode Fibre Transceiver <ul style="list-style-type: none"> <li>up to 10 km</li> <li>-40~85°C operating temperature</li> </ul>



People simply want things to work as they should, and network management is no exception. D-Link designed Nuclias to be a networking solution with a simple and user-orientated design, packed with rich features and functionality, designed to address the needs of everyone.



**Simplicity**

Nuclias Cloud allows any organisation with any level of IT resource to quickly and easily set up, configure, monitor, troubleshoot, and manage their network deployment remotely through a web browser, or the dedicated Nuclias tablet app.

### Zero-Touch Deployment

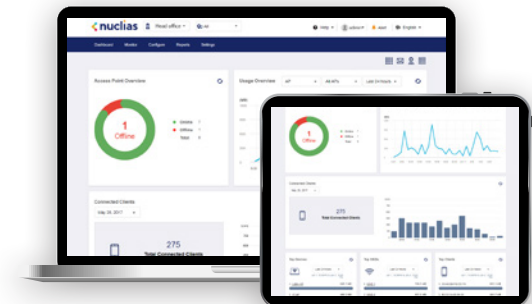
Zero-touch deployment and reduced installation and configuration costs thanks to a centralised, profile-based cloud management system.

### Hassle-Free Management

Nuclias Cloud is a turnkey solution with simple installation and management, designed to work even if the connection to the cloud is interrupted.

### Unlimited Scalability

Suitable for small branch offices to large networks, Nuclias Cloud provides unlimited capacity and uncompromised throughput with its low in-band data management footprint.



# NUCLIAS

Nuclias Connect is the ideal centralised network management solution for SMB and SME networks. Nuclias Connect makes it easier to analyse, automate, configure, optimise, scale, and secure a network – delivering the convenience of an Enterprise-grade management solution, at an SMB price.

## Free Software Download

Free to download software for Windows and Linux providing centralised management for a wide range of D-Link access points.

## Self-Optimising Network

Nuclias Connect automatically adjusts access point transmission power to optimise coverage as well as self-heal in the event of device failure.

## Local Management

Nuclias Connect can be installed on a local as well as privately hosted cloud server, meaning all the data is kept private. Alternatively, Nuclias Connect Hub\* is a dedicated controller preloaded with the Nuclias Connect management software



# Customisable

## Main features

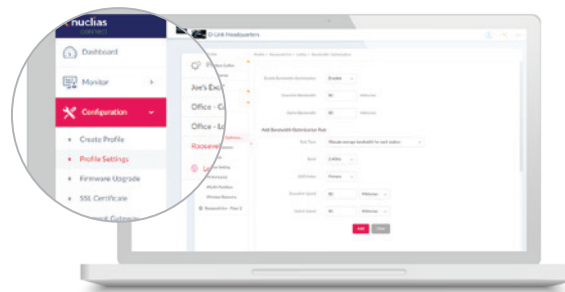
- Free-to-Download Nuclias Connect Management Software
- License-Free Access Points
- Backwards-Compatibility
- Intuitive Interface
- Inexpensive Hardware Controller (Nuclias Connect Hub\*)
- Traffic Reporting & Analytics
- Remote Config & Batch Config
- Multi-Tenant & Role-based Administration
- Searchable & Auditable Event & Change Logs
- 802.1x and RADIUS Server, POP3, LDAP
- Multilingual Support
- Front-Desk Ticket Management
- Authentication and Payment Gateway (Paypal)
- Integration via Customisable Captive Portal



Nuclias Connect Hub\*

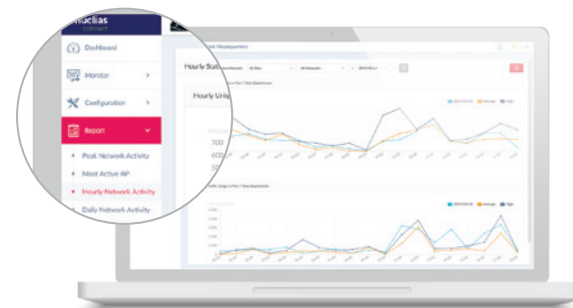
## Flexibility to Meet Your Needs

- Free software download or dedicated Nuclias Connect Hub\*
- Monitoring and remote management of wireless APs on your network
- Control & analytics of a broad or fine granularity, presentable in a variety of formats.
- Manage a variety of distributed deployments, including the option to configure settings and admin accounts in a specific manner for each deployment.
- Expand from a small network to a larger one (up to 1,000 APs)



## Insights at a Glance

- Gain an extensive understanding of your network through usage analytics and status reports which can be viewed at a glance.
- Insights derived from traffic data can create business value.
- Traffic can be viewed across the entire network, to the level of a single AP.



\* Available Q4, 2019

NUCLIAS CLOUD



Complete cloud-managed networking solution for small to medium-sized organisations with one or more sites.

Wi-Fi coverage and network capacity are provided by high-performance Access Points and Managed Switches deployed on site, while configuration and ongoing management can be carried out remotely through a web browser or tablet. Zero-touch provisioning and centralised cloud-based control make the network simpler to install and easier to manage.

With Nuclias, network configurations and software updates are pushed to remote devices through the cloud, without the need to have specialised equipment or personnel onsite.

SSL encrypted, out-of-band network monitoring and management ensures secure connectivity whilst minimising bandwidth requirement.

Simpler to install and easier to manage



Main features

- Zero-touch provisioning
- Role-based administration
- Auditable change logs
- Authentication via customisable captive portal, 802.1x and RADIUS server
- Social login for Wi-Fi access supported
- Advanced traffic report and data analysis
- Intuitive web-based interface with multilingual support
- Automatic monitoring and alerts
- Over-the-web firmware upgrades
- Searchable network-wide event log
- Intuitive VLAN Configuration
- Cloud based RF Optimisation

Wave 2 Cloud-Managed Access Points



MODEL	DBA-1210P	DBA-2520P*	DBA-2820P
Wireless standards	Simultaneous a/n/ac and b/g/n	Simultaneous a/n/ac and b/g/n	Simultaneous a/n/ac and b/g/n
802.11ac Wave 2	• (AC1300)	• (AC1900)	• (AC2600)
Maximum wireless speed	867 Mbps - 5 GHz 300 Mbps - 2.4 GHz	1,300 Mbps - 5 GHz 600 Mbps - 2.4 GHz	1,733 Mbps - 5 GHz 800 Mbps - 2.4 GHz
MU-MIMO	•	•	•
Power-over-Ethernet	• (802.3af)	• (802.3at)	• (802.3at)
Wired interface	1 x Gigabit Ethernet	1 x Gigabit Ethernet	1 x Gigabit Ethernet
Maximum number of SSIDs	16	16	16
WPA3 support	•	•	•

Gigabit Cloud-Managed Switches

Gigabit Ethernet



	MODEL	DBS-2000-10MP	DBS-2000-28	DBS-2000-28P	DBS-2000-28MP	DBS-2000-52	DBS-2000-52MP
HARDWARE	Number of Gigabit ports	8	24	24	24	48	48
	Number of Combo 1000BASE-T/SFP ports		4	4	4	4	4
	Number of SFP ports	2					
	Switching capacity	20 Gbps	56 Gbps	56 Gbps	56 Gbps	104 Gbps	104 Gbps
	PoE standards	802.3af, 802.3at		802.3af, 802.3at	802.3af, 802.3at		802.3af, 802.3at
	PoE power budget	130 W		193 W	370 W		370 W
	PoE capable ports	Ports 1-8, up to 30W		Ports 1-24, up to 30W	Ports 1-24, up to 30W		Ports 1-48, up to 30W
	Time-based PoE	•	•	•	•	•	•
	Fanless	•	•	•	•	•	•
	802.3az EEE	•	•	•	•	•	•
	Power supply type	Internal	Internal	Internal	Internal	Internal	Internal
L2	MAC address	8K	8K	8K	8K	16K	16K
	802.1D STP, 802.1w RSTP	•	•	•	•	•	•
	802.3ad link aggregation	•	•	•	•	•	•
VLAN	VLAN group (max static)	256	256	256	256	256	256
	Port-based VLAN, Voice VLAN	•	•	•	•	•	•
SECURITY	SSL	•	•	•	•	•	•
	ACL	•	•	•	•	•	•
	Port security	•	•	•	•	•	•

\* Coming soon

NUCLIAS CONNECT

# nuclias connect

A free network management software with robust functionality, highly scalable, and end-to-end control.



## WiFi4EU

In order to promote free Wi-Fi connectivity in public spaces, the European Commission's WiFi4EU initiative aims to provide municipalities with funding for Wi-Fi equipment.

€120 million will be allocated to 8,000 municipalities, with each receiving €15,000. This will be done over 5 "calls" between 2018 and 2020.

### WiFi4EU Access Point Criteria

- Supports concurrent dual-band (2,4GHz – 5GHz) use
- Has a support cycle superior to 5 years
- Has a mean time between failure (MTBF) of at least 5 years
- Has a dedicated and centralised single point of management for all APs of each WiFi4EU network
- Supports IEEE 802.1x
- Complies with IEEE 802.11ac Wave 1
- Supports IEEE 802.11r
- Supports IEEE 802.11k
- Supports IEEE 802.11v
- Is able to handle at least 50 concurrent users without performance degradation
- Has at least 2x2 multiple-input-multiple-output (MIMO)
- Complies with Hotspot 2.0 (Passpoint Wi-Fi Alliance certification program).

For more info, visit <https://www.wifi4eu.eu>

MODEL	DAP-2230	DAP-2310	DAP-2360	DAP-2610	DAP-2660	DAP-2680	DAP-2695	DAP-3315	DAP-3662	DAP-2662	DAP-3666
WiFi4EU/Hotspot 2.0 compatible										•	•
Wireless standards	b/g/n	b/g/n	b/g/n	Simultaneous a/n/ac (Wave 2) and b/g/n	Simultaneous a/n/ac and b/g/n	Simultaneous a/n/ac (Wave 2) and b/g/n	Simultaneous a/n/ac and b/g/n	b/g/n	Simultaneous a/n/ac and b/g/n	Simultaneous a/n/ac and b/g/n	Simultaneous a/n/ac and b/g/n
Wireless frequency range	2.4 to 2.4835 GHz	2.4 to 2.4835 GHz	2.4 to 2.4835 GHz	2.4 to 2.4835 GHz 5.15 to 5.875 GHz	2.4 to 2.4835 GHz 5.15 to 5.875 GHz	2.4 to 2.4835 GHz 5.15 to 5.875 GHz	2.4 to 2.4835 GHz 5.15 to 5.875 GHz	2.4 to 2.4835 GHz	2.4 to 2.4835 GHz 5.15 to 5.875 GHz	2.4 to 2.4835 GHz 5.15 to 5.875 GHz	2.4 to 2.4835 GHz 5.15 to 5.875 GHz
Maximum wireless speed	300 Mbps - 2.4 GHz	300 Mbps - 2.4 GHz	300 Mbps - 2.4 GHz	867 Mbps - 5 GHz 400 Mbps - 2.4 GHz	867 Mbps - 5 GHz 300 Mbps - 2.4 GHz	1300 Mbps - 5 GHz 450 Mbps - 2.4 GHz	1300 Mbps - 5 GHz 450 Mbps - 2.4 GHz	300 Mbps - 2.4 GHz	867 Mbps - 5 GHz 300 Mbps - 2.4 GHz	867 Mbps - 5 GHz 300 Mbps - 2.4 GHz	867 Mbps - 5 GHz 300 Mbps - 2.4 GHz
MIMO	•	•	•	• (MU-MIMO)	•	• (MU-MIMO)	•	•	•	•	•
Antenna type	Embedded omni-directional	2 detachable omni-directional	2 detachable omni-directional	2 embedded omni-directional	4 embedded omni-directional	3 embedded omni-directional	6 detachable omni-directional	Sector	4 embedded omni-directional	4 embedded omni-directional	4 embedded omni-directional
Antenna gain	3 dBi	2 dBi	5 dBi	3 dBi for 2.4GHz 3 dBi for 5GHz	3 dBi for 2.4GHz 4 dBi for 5GHz	3.6 dBi for 2.4GHz 4.2 dBi for 5GHz	4 dBi for 2.4GHz 6 dBi for 5GHz	12 dBi	6 dBi for 2.4GHz 6 dBi for 5GHz	3 dBi for 2.4GHz 4 dBi for 5GHz	6 dBi for 2.4GHz 6 dBi for 5GHz
Power-over-Ethernet (PoE)	• (802.3af)		• (802.3af)	• (802.3af)	• (802.3af)	• (802.3af)	• (802.3af)	• (proprietary)	• (802.3af)	• (802.3af)	• (802.3af)
Wired interface	1 x Fast Ethernet	1 x Gigabit	1 x Gigabit	1 x Gigabit	1 x Gigabit	1 x Gigabit	2 x Gigabit	2 x Fast Ethernet	2 x Gigabit	1 x Gigabit	2 x Gigabit
Console port							•				
Type of housing	Plastic	Plastic	Metal (UL-2043)	Plastic	Plastic	Plastic	Metal (UL-2043)	Plastic	Plastic	Plastic	Plastic
Outdoor housing (IP rating)								• (IPX5)	• (IP68)		• (IP68)
Maximum number of SSIDs	8	8	8	16	16	16	16	8	16	16	16
Multiple modes (AP, WDS with AP, WDS / bridge, client)	•	•	•	•	•	•	•	•	•	•	•
WMM-PS/802.11e (U-APSD)	•	•	•	•	•	•	•	•	•	•	•
Wi-Fi scheduler	•	•	•	•	•	•	•	•	•	•	•
AP traffic load balance	•	•	•	•	•	•	•	•	•	•	•
L2 roaming	•	•	•	•	•	•	•	•	•	•	•
WEP/WPA/WPA2-Per./Ent.	•	•	•	•	•	•	•	•	•	•	•
TKIP/AES encryption	•	•	•	•	•	•	•	•	•	•	•
WLAN partition, Station Isolation	•	•	•	•	•	•	•	•	•	•	•
SSID broadcast disable	•	•	•	•	•	•	•	•	•	•	•
MAC address filtering	•	•	•	•	•	•	•	•	•	•	•
802.1X authentication	•	•	•	•	•	•	•	•	•	•	•
DHCP server	•	•	•	•	•	•	•	•	•	•	•
802.1D STP, IGMP snooping, ARP spoofing, SNTP	•	•	•	•	•	•	•	•	•	•	•
IPv6	•	•	•	•	•	•	•	•	•	•	•
WEB	•	•	•	•	•	•	•	•	•	•	•
SNMP (v1, v2c, v3)	•	•	•	•	•	•	•	•	•	•	•
CLI, Telnet, SSH	•	•	•	•	•	•	•	•	•	•	•
Syslog	•	•	•	•	•	•	•	•	•	•	•
Central management through Nuclias Connect*	•	• (H/W ver. B1)	• (H/W ver. B1)	•	•	•	•	•	•	•	•

\* Compatibility with Nuclias Connect through firmware update.

BUSINESS WIRELESS



# Managing Wireless Access

D-Link's wireless management option allows you to centrally manage and monitor up to 1,024 wireless access points either within a local network or remotely. Furthermore with our Nuclias Cloud-Managed Networks, you can quickly and easily deploy and monitor unlimited number of access points, through a simple pay as you grow subscription model.

## Managed Wireless



	Nuclias Cloud	Nuclias Connect	Nuclias Connect Hub (DNH-100)	DWC-1000 (H/W vers. C1)	DWC-2000	
H/W	Number of Gigabit ports			1 x LAN	4 x LAN, 2 x WAN	
	Number of Combo 1000Base-T/SFP ports				4	
WLAN MANAGEMENT	Type of controller	Cloud-based	Software-based (Free)	Hardware-based	Hardware-based	
	Standard number of APs	N/A, Subscription per AP	1000	100	12 (48 with cluster of 4 x DWC-1000)	64 (256 with cluster of 4 x DWC-2000)
	Maximum number of APs through optional license upgrade	Unlimited number of APs supported through subscription	1000	100	66 (264 with cluster of 4 x DWC-1000)	256 (1024 with cluster of 4 x DWC-2000)
	Supported AP	DBA-1210P DBA-2820P	DAP-2230 DAP-2310 (B1) DAP-2360 (B1) DAP-2610 DAP-2660 DAP-2662	DAP-2680 DAP-2695 DAP-3315 DAP-3362 DAP-3666	DWL-2600AP DWL-3610AP DWL-6610AP DWL-6610APE DWL-6620AP DWL-6700AP	DWL-7620AP DWL-8610AP DWL-8620AP DWL-8620APE DWL-8710AP
	Zero touch provisioning for AP deployment		*			
	AP geolocation	- (with Google Maps)				
	Controller redundancy				*	*
	Advanced traffic report and data analysis	*	*	*		
	Visualised topology	*	*	*	*	*
	NAT pass through (AP)	*	*	*		
Multi-tenancy	*	*	*			
WIDS				*	*	
IPv6	*	*	*	*	*	
USER AUTHENTICATION	Captive portal	*	*	*	*	
	Authentication method	802.1x, RADIUS, Facebook/Google login	Local DB, external RADIUS, LDAP, POP3, Wi-Fi passcode, AD	Local DB, external RADIUS, LDAP, POP3, Wi-Fi passcode, AD	Local DB, external RADIUS, NAP, Wi-Fi passcode	Local DB, external RADIUS, NAP, Wi-Fi passcode
	Payment gateway (Paypal, WorldPay, SecureNet, Authorise.Net)		*	*	*	*
Web redirect		*	*	*	*	
RF	Auto transmit power control		*	*	*	
	Self-healing around failed APs		*	*	*	
WIRELESS FEATURE	Multiple SSID per Radio (AP)	8	8	8	16	16
	Band steering	*	*	*	*	*
	Seamless roaming		*	*	*	*
	L2 roaming		*	*	*	*
	Bandwidth optimisation	*	*	*	• (QoS)	• (QoS)
	Load balancing		*	*	*	*
SYSTEM MANAGEMENT	Web-based user interface	HTTPS	HTTPS	HTTPS	HTTP	HTTP
	Firmware/module online check	*	*	*		
	Remote management	*	*	*	*	*
	Cloud hosting	Native	Amazon Web Services / Microsoft Azure	Amazon Web Services / Microsoft Azure		
Firmware/configuration upgrade by scheduling	*	*	*			
NETWORKING	WAN fail-over				*	
	Link aggregation					• (LACP)
	Layer 3 routing (table size)				• (100)	• (2048)
	Firewall				*	*
	VLAN	*	*	*	*	*
	Support VPN gateway				• (VPN license upgrade)	*
OTHERS	Build in DHCP server				*	*
	Optional license upgrades				DWC-1000-AP6-LIC DWC-1000-VPN-LIC	DWC-2000-AP32-LIC DWC-2000-AP64-LIC DWC-2000-AP128-LIC

› Saves time and resources by configuring and managing multiple access points from a cloud, software or hardware-based wireless controller. This avoids repeated configurations and improves control of the wireless network.



BUSINESS WIRELESS



	MODEL	DAP-1665	DAP-2020	DWL-2600AP	DWL-3610AP	DWL-6610AP/APE	DWL-6620APS	DWL-6700AP	DWL-7620AP	DWL-8610AP	DWL-8620AP/APE	DWL-8710AP	
HARDWARE	Wireless standards	Simultaneous a/n/ac and b/g/n	b/g/n	b/g/n	Selectable Dual-Band b/g/n	Simultaneous Dual-Band a/n/ac and b/g/n	Simultaneous Dual-Band a/n/ac and b/g/n	Simultaneous Dual-Band a/n/ac and b/g/n	Simultaneous Tri-Band a/n/ac and b/g/n	Simultaneous Dual-Band a/n/ac and b/g/n	Simultaneous Dual-Band a/n/ac and b/g/n	Simultaneous Dual-Band a/n/ac and b/g/n	
	Wireless frequency range	2.4 to 2.4835 GHz 5.15 to 5.875 GHz	2.4 to 2.4835 GHz	2.4 to 2.4835GHz	2.4 to 2.4835GHz 5.15 to 5.875GHz	2.4 to 2.4835GHz 5.15 to 5.875GHz	2.4 to 2.4835GHz 5.15 to 5.875GHz	2.4 to 2.4835GHz 5.15 to 5.875 GHz	2.4 to 2.4835GHz 5.15 to 5.875GHz	2.4 to 2.4835GHz 4.9 to 5.85 GHz	2.4 to 2.4835GHz 5.15 to 5.875GHz	2.4 to 2.4835GHz 4.9 to 5.85 GHz	
	Maximum wireless speed	867 Mbps - 5 GHz 300 Mbps - 2.4 GHz	300 Mbps - 2.4 GHz	300 Mbps - 2.4 GHz	867 Mbps - 5 GHz 300 Mbps - 2.4 GHz	867 Mbps - 5 GHz 300 Mbps - 2.4 GHz	867 Mbps - 5 GHz 400 Mbps - 2.4 GHz	300 Mbps - 5 GHz 300 Mbps - 2.4 GHz	2 x 867 Mbps - 5 GHz 400 Mbps - 2.4 GHz	1300 Mbps - 5 GHz 450 Mbps - 2.4 GHz	1733 Mbps - 5 GHz 800 Mbps - 2.4 GHz	867 Mbps - 5 GHz 300 Mbps - 2.4 GHz	
	MIMO	• (MU-MIMO)	•	•	•	•	• (MU-MIMO)	•	• (MU-MIMO)	•	• (MU-MIMO)	•	
	Antenna type	2 detachable omni-directional	2 detachable omni-directional	Embedded omni-directional	Embedded omni-directional	Embedded / 4 detachable omni-directional	Embedded omni-directional	Embedded	Embedded omni-directional	Embedded omni-directional	Embedded / 4 detachable omni-directional	4 detachable omni-directional	
	Smart Antennas						•						
	Antenna gain	4 dBi for 2.4GHz 6 dBi for 5GHz	5 dBi	3 dBi	3 dBi for 2.4GHz 3 dBi for 5GHz	4 / 3 dBi for 2.4GHz 4 dBi for 5GHz	4 dBi for 2.4GHz 6 dBi for 5GHz	3 dBi for 2.4GHz 8 dBi for 5GHz	3 dBi for 2.4GHz 4 dBi for 5GHz	5 dBi for 2.4GHz 6.5 dBi for 5GHz	3 dBi for 2.4GHz 4 dBi for 5GHz	5 dBi for 2.4GHz 7 dBi for 5GHz	
	Power-over-Ethernet			• (802.3af)	• (802.3af)	• (802.3af)	• (802.3at)	• (proprietary)	• (802.3at)	• (802.3at)	• (802.3at)	• (802.3at)	
	Wired interface	1 x Gigabit	1 x Fast Ethernet	1 x Fast Ethernet	1 x Gigabit Ethernet	1 x Gigabit Ethernet	2 x Gigabit Ethernet	2 x Fast Ethernet	2 x Gigabit Ethernet	2 x Gigabit Ethernet	2 x Gigabit Ethernet	2 x Gigabit Ethernet	
	Console port				•	•	•	•	•	•	•	•	
Type of housing	Plastic	Plastic	Plastic	Plastic	Plastic	Plastic	Plastic	Plastic	Metal/plastic	Plastic	Metal/plastic		
Outdoor housing (IP rating)							• (IP55)				• (IP67)		
Plenum rated (UL-2043)						•	•	•	•	•	•		
WIRELESS MODES	Access point (AP)	•	•	•	•	•	•	•	•	•	•	•	
	WDS with AP	•	•	•	•	•	•	•	•	•	•	•	
	WDS / bridge	•	•	•	•	•	•	•	•	•	•	•	
WIRELESS FEATURES	Maximum number of SSIDs	7	1	16	16	32 (16 per radio)	32 (16 per radio)	8 (4 per radio)	48 (16 per radio)	32 (16 per radio)	32 (16 per radio)	32 (16 per radio)	
	Auto channel selection	•	•	•	•	•	•	•	•	•	•	•	
	WMM-PS/802.11e (U-APSD), AP load balance	•	•	•	•	•	•	•	•	•	•	•	
	Wi-Fi scheduler	•	•	•	•	•	•	•	•	•	•	•	
L2 roaming			•	•	•	•	•	•	•	•	•		
SECURITY	WEP 64/128bit, WPA/WPA2-Personal/Enterprise, TKIP/AES encryption	• (no WEP encryption)	•	•	•	•	• (no WEP encryption)	• (no WEP encryption)	• (no WEP encryption)	•	• (no WEP encryption)	• (no WEP encryption)	
	WPA/WPA2-PSK over WDS			•	•	•	•	•	•	•	•	•	
	WLAN partition	•	•	•	•	•	•	•	•	•	•	•	
	SSID broadcast disable	•	•	•	•	•	•	•	•	•	•	•	
	Rogue AP detection, station isolation	• (no Rogue AP dect.)	• (no Rogue AP dect.)	•	•	•	•	•	•	•	•	•	
	MAC address filtering, 802.1X authentication	•	•	•	•	•	•	•	•	•	•	•	
WIRELESS CONTROLLER MANAGED FEATURES	Rogue AP mitigation			•	•	•	•	•	•	•	•	•	
	L2/L3 fast roaming			•	•	•	•	•	•	•	•	•	
	WIDS/WIPS			•	•	•	•	•	•	•	•	•	
	Auto-channel, auto-RF management			•	•	•	•	•	•	•	•	•	
	AP load balance			•	•	•	•	•	•	•	•	•	
	Captive portal			•	•	•	•	•	•	•	•	•	
	View neighbour AP information			•	•	•	•	•	•	•	•	•	
	Supported D-Link Wireless Controller			DWC-1000, DWC-2000	DWC-1000, DWC-2000	DWC-1000, DWC-2000	DWC-1000, DWC-2000	DWC-1000, DWC-2000	DWC-1000, DWC-2000	DWC-1000, DWC-2000	DWC-1000, DWC-2000	DWC-1000, DWC-2000	
	MANAGEMENT	WEB	•	•	•	•	•	•	•	•	•	•	•
		SNMP (v1, V2c, v3)			•	•	•	•	•	•	•	•	•
CLI, Telnet, SSH				•	•	•	•	SSH only	•	•	•	•	
Syslog		•		•	•	•	•	•	•	•	•	•	
Configuration group through AP Array				• (up to 8 APs)	• (up to 8 APs)	• (up to 8 APs)				• (up to 8 APs)		• (up to 8 APs)	

VIDEO SURVEILLANCE



# Security Cameras That Help Businesses

When it comes to end-to-end surveillance solutions, D-Link has you covered. From cameras and switches to wireless access points, network video recorders and software, we have everything you need to customise your business or personal security. And we make it really simple, too. With our exclusive Auto Surveillance VLAN technology, D-Link Smart Switches auto-discover IP cameras, create a virtual LAN and prioritise traffic. Simple.

## D-Link Video Surveillance offers:

- 1 Extensive range of indoor and outdoor cameras
- 2 Flexible connectivity options with Wi-Fi and PoE support
- 3 See the whole picture, in more detail, with cameras supporting up to 5 megapixel resolution and innovative technology such as 180° Wide Eye.
- 4 End-to-end surveillance solutions, include network switches that support surveillance optimised user interface as well as automatic prioritization of surveillance traffic.



## The Complete Video Surveillance Solution



Video Surveillance Cameras



Video Management Software



Video Storage



Network Switches










Network Video Recorders



We have everything you need to customise your business or personal security.

VIDEO SURVEILLANCE

	Fixed Cameras Indoor		Pan & Tilt Cameras Indoor	Fixed Cameras Outdoor	Outdoor Bullet		Outdoor Dome
							
MODEL	DCS-932L	DCS-936L	DCS-5000L	DCS-2670L	DCS-7513	DCS-7517	DCS-6517
Image Sensor	1/5" VGA progressive scan CMOS	1/4" 1 megapixel progressive scan CMOS	1/5" VGA Progressive scan CMOS	1/2.7" 2 megapixel progressive scan CMOS	1/2.8" 2 megapixel WDR progressive scan CMOS	1/2.9" 5 megapixel WDR progressive scan CMOS	1/2.9" 5 megapixel WDR progressive scan CMOS
Maximum Video Resolution (Ratio)	640 x 480	1280 x 720 (16:9)	640 x 480	1920 x 1080 (16:9)	1920 x 1080 (16:9) 1440 x 1080 (other)	1920 x 1080 (16:9) 2592 x 1944 (other)	1920 x 1080 (16:9) 2560 x 1920 (other)
Lens	Fixed 5.01 mm, F2.8	Fixed 2.45 mm, F2.4	Fixed 2.2 mm, F2.4	Fixed 1.5 mm, F2.0	Motorised P-Iris varifocal 2.8 ~ 12 mm, F1.4	Motorised varifocal 2.8 ~ 12 mm, F1.4	Motorised varifocal 2.8 ~ 12 mm, F1.4
Minimum Illumination (Lux)	1 Lux (colour) 0 Lux (B&W, IR-LED on)	2.6 Lux (colour) 0 Lux (B&W, IR-LED on)	1 Lux (colour) 0 Lux (B&W, IR-LED on)	0.5 Lux (colour) 0.1 Lux (B&W) 0 Lux (B&W, IR-LED on)	0.1 Lux (colour) 0 Lux (B&W, IR-LED on)	0.5 Lux (colour) 0 Lux (B&W, IR-LED on)	0.5 Lux (colour), 0 Lux (B&W, IR-LED on)
Infrared-Cut Removable Filter	●	●	●	●	●	●	●
IR Built-in	5 m	5 m	8 m	10 m	30 m Smart IR	30 m Smart IR	20 m Smart IR
Wide Dynamic Range (WDR)					●	●	●
Angle Of View (H/V/D)	45.3° / 34.5°	112° / 77° / 120°	57° / 42°	180° / 86° / 180°	108°~33° / 57°~19°	75°~24° / 55°~18° / 96°~30°	75° ~ 24° / 55° ~ 18° / 96° ~ 30°
Motorised Pan/Tilt (Range)			● (+170° to -170° / +95° to -25°)				
Gimbal (V/H/Rotational)							3-Axis (73° / 375° / 90°)
Optical Zoom					4x	4x	4x
Privacy Masks					3 zones	5 zones	5 zones
Analogue Output					BNC (with optional DCS-11)	BNC (with optional DCS-11)	BNC (with optional DCS-11)
Vandal proof							IK10
Built-in Microphone	●	●	●	●			
2-Way Audio					● (with optional DCS-11)	● (with optional DCS-11)	● (with optional DCS-11)
External Microphone Input					● (with optional DCS-11)	● (with optional DCS-11)	● (with optional DCS-11)
External Speaker Output					● (with optional DCS-11)	● (with optional DCS-11)	● (with optional DCS-11)
Wireless	802.11b/g/n	802.11b/g/n	802.11b/g/n	802.11b/g/n			
Wi-Fi Signal Locator		●					
Ethernet Port (PoE Support)	●		●	●	● (802.3af)	● (802.3af)	● (802.3af)
Digital Input/Output (DI/DO)					1/1 (with optional DCS-11)	1/1 (with optional DCS-11)	1/1 (with optional DCS-11)
Onboard Storage Card Slot		MicroSD SDHC (max. 32GB)		MicroSD SDXC (max. 128GB)	SD SDHC (max. 128 GB)	MicroSD SDHC (max. 128 GB)	MicroSD SDHC (max. 128 GB)
Maximum Power Consumption	2.84W	4 W	4.8 W	5 W	10 W	10 W	10 W
Web-browser interface	●	●	●	●	●	●	●
Video Format	MJPEG	H.264 MJPEG	H.264 MJPEG	H.264	H.264 MJPEG	H.265 H.264 MJPEG	H.265 H.264 MJPEG
Multi-Stream		●	●	●	●	●	●
Mobile Stream	●	●		●	●	●	●
ONVIF Compliant				●	●	●	●
Digital Zoom	4x	4x	4x	10x	16x	10x	10x
Motion Detection	●	●	●	●	●	●	●
Facial Detection					●		
Sound Detection	●	●		●			
Tamper Detection					●	●	●
E-Mail Notification	●	●	●	●	●	●	●
Event Recording to SD card		●		●	●	●	●
Event Recording to NAS					●	●	●
IPv6 Support		●		●	●	●	●

HARDWARE FEATURES

SOFTWARE FEATURES

VIDEO SURVEILLANCE

# DNR-2020-04P JustConnect 16-Channel PoE Network Video Recorder



The DNR-2020-04P JustConnect 16-Channel PoE Network Video Recorder is an all-in-one network video recorder (NVR) that can record video from up to 16 network cameras to its dual HDD storage.

without the need to turn on their PC. Featuring Power over Ethernet (PoE), the NVR supplies power to up to four PoE cameras, saving valuable time and electrical installation costs during setup.

Powered by an embedded system, the DNR-2020-04P supports real-time remote monitoring and playback via a web browser using the NVR's web GUI.

Additionally, support for audio in/out, DI/DO triggering, and external USB 3.0 storage for video export and backups fills the needs of small businesses.

The bundled Multi-NVR Viewer is a comprehensive network surveillance software designed for SMB and enterprise users, making the DNR-2020-04P a convenient, versatile, and effective video recorder.

**1 Concurrent Recording and Viewing**

Record and view real-time video streams from up to 16 cameras on a local network or remotely over the Internet.




**2 Easy Setup and Configuration**

Embedded software enables easy setup via a connected monitor and four PoE ports eliminate the need for electrical wiring when adding cameras.

**3 No Computer Needed**

Standalone solution with two integrated hard disc bays, USB mouse/keyboard support and HDMI/VGA monitor support.



	NVR		
			
	mydlink	mydlink	just connect+
MODEL	DNR-312L	DNR-322L	DNR-2020-04P
Simultaneous Recording	9 channels	16 channels	16 channels
Simultaneous Playback	9 channels	16 channels	16 channels
Local Display	HDMI		VGA, HDMI
PoE Switch Ports			4 x Fast Ethernet 802.3af PoE
Uplink Ports			1 x Gigabit Ethernet
Number of Disk Drive Bays	1	2	2
Maximum Storage Capacity	Up to 8 TB	Up to 16 TB	Up to 16 TB
Live View	•	•	•
UPS Support via USB	•	•	•
Remote Backup	•		•
RAID Support		•	•
E-Mail Notification	•	•	•
Smart Search			•
Manual/Continuous Recording	•	•	•
Scheduled/Triggered Event Recording	•	•	•
3rd party Camera Support	•	•	•
mydlink Support	•	•	

Powered by an embedded system, the DNR-2020-04P supports real-time remote monitoring and playback via a web browser using the NVR's web GUI.

# D-ViewCam™

D-Link has its own Video Management Software (VMS), known as D-ViewCam, which is designed to run on industry-standard Windows platforms



## D-ViewCam / DCS-100

Bundled free with D-Link network cameras D-ViewCam enables users to centrally manage multiple cameras for home or businesses.

Supporting up to 64 network cameras and up to 64 users, D-ViewCam is compatible with all current D-Link network cameras and video servers, offers digital monitoring and recording with a wide array of features including simultaneous video recording, playback and live view.

D-ViewCam offers scheduled, motion and manual recording. Recorded files can be searched by video type and selected files can be played, edited and converted into AVI or ASF files. The e-map mode allows users to arrange a map with camera locations and orientation, while additional features such as auto-patrol, rotate, zoom, and focus provide optimal control over video surveillance.

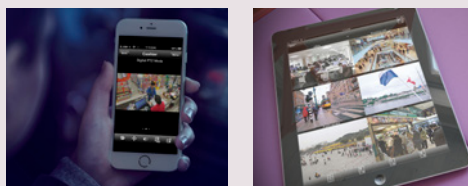
## D-ViewCam Plus / DCS-250

The DCS-250 D-ViewCam Plus is comprehensive network camera surveillance software designed for medium-to-large business as well as enterprise users. It centrally manages up to 64 network cameras and is compatible with current D-Link network cameras, video servers and an extensive range of third-party network cameras. This software offers digital monitoring and recording of video, audio, and events for use in various security applications. Furthermore, this easy-to-use surveillance software provides users with a wide array of features, including multiple-channel playback, high-resolution monitoring and live view.

Powerful optional Intelligent Video Surveillance (IVS) packages are available for D-ViewCam Plus, including Presence/Tripwire and Counting IVS packages. The Presence/Tripwire Package (DCS-250-PRE-001-LIC) allows users to set up to 40 zones or lines which detect when an object is inside or crossing a zone or a line, as well as camera-shake elimination. The Counting Package (DCS-250-COU-001-LIC), allows objects such as people or vehicles to be counted. Both packages provide tamper detection to give users extra peace of mind.

## D-ViewCam Mobile

Keep an eye on your surveillance cameras anytime, anywhere with D-Link's D-ViewCam Mobile app. The D-ViewCam Mobile app makes it easy to check on your home or business no matter where you are, no matter what time of day it is.



### D-ViewCam Plus IVS Presence License

This license enables video analytics functions to detect when an object is inside or is crossing a zone or a line.

**Effective video analytics**  
Low cost and affordable.  
40 detection zones or lines

**Precise detection algorithm**  
Up to 95% accuracy.  
No false alarms from falling leaves, rain, snow or camera noise

**Save recording space**  
Recording function triggers only on event, with high-precision detection algorithm which translates to significant savings in storage space

**Stabiliser**  
In environments where camera stability is an issue, this feature compensates for any movement to provide a clear view

**Tamper Detection**  
Detects any event that significantly changes the field of view of the camera, such as loss of focus if the camera has been covered up.

### D-ViewCam Plus IVS Counting License

This license enables video analytics functions such as people and vehicle counting, camera stability and tamper detection for the D-ViewCam Plus for one camera. The engine can track, classify, and analyse the behaviour of individuals or a group of objects over long distances to greatly improve parameter security and monitoring efficiency.

- Instant alarm notifications
- Intelligent event search with video
- Intuitive 3D grid calibration
- 40 detection zones and tracks up to 100 targets per camera
- Self-learning algorithm automatically adapts to environment changes

### People Counting

- Includes a bi-directional line-crossing filter, suitable for counting people in busy doorways and entrances

### Vehicle Counting

- Captures statistics on vehicle flow
- Provides an estimated speed of the vehicle

### Tamper Detection

Detects any event that significantly changes the field of view of the camera, such as focus loss or camera being covered up.



## VIDEO SURVEILLANCE



# It's time for vigilance

The Vigilance Camera range offers professional, full-featured, high-definition video surveillance that is easy to install and highly affordable. The range consist of cameras designed specifically to meet different surveillance and environmental requirements, from standalone surveillance solutions that allow you to record video without additional software or equipment, to weather-/vandal-proof cameras for harsh environments.



## The Vigilance Camera range from D-Link offers a wide variety of features including:

### Up to 5-Megapixel Resolution

High-definition images allow you to see and capture detailed images that can show revealing characteristics, such as clothing brands or prominent tattoos.

### Long-Range Night Vision

Integrated infrared illuminators allow the camera to see up to 30m, even in complete darkness.

### Wide Dynamic Range

Effective in contrasting light conditions, giving clear footage from shadowed areas as well as brightly lit spaces.

### 3D Noise Reduction

Allows the camera to capture clearer videos with less noise under poor lighting conditions.

Ideal when facial or object identification is required.

### Low-Light Capability

High-sensitivity camera sensor allows the camera to see details in colour, even in very low light conditions.

### Weather-Proof

IP-66 housing designed for use in harsh environments. Specifically built to withstand adverse weather conditions.

### Vandal-Proof

Toughened metal, industry-certified IK-10 housing specifically built to withstand sudden high impact.

### Power over Ethernet

Power and network connectivity through a single network cable simplifies installation as well as deployment cost. More flexibility where the camera can be deployed as it can be positioned in areas where no power outlet is nearby.

### Motion Detection

Able to detect motion, thus triggering recording to on-board or off-board storage space (eg MicroSD card or Network Video Recorder).

## Ideal for protecting:

**Offices & Shops**  
**Public Spaces**  
**Warehouses**  
**Factories**  
**Hospitals**  
**Schools**  
**Health Centres**  
**Shopping Malls**  
**Business Centres**  
**Train Stations**



VIDEO SURVEILLANCE



MODEL	DCS-4603	DCS-4622	DCS-4625	DCS-4602EV	DCS-4633EV	DCS-4605EV	DCS-4701E	DCS-4703E	DCS-4705E	DCS-4802E
Model Name	Full HD PoE Dome Camera	Full HD Panoramic Fisheye Camera	5-Megapixel Panoramic Fisheye Camera	Full HD Outdoor PoE Vandal-Proof Dome Camera	3-Megapixel Outdoor PoE Vandal-Proof Dome Camera	5-Megapixel Outdoor PoE Vandal-Proof Dome Camera	Full HD Outdoor PoE Mini Bullet Camera	Full HD Outdoor PoE Mini Bullet Camera	5-Megapixel Outdoor PoE Mini Bullet Camera	Full HD Outdoor PoE Mini Dome Camera
Indoor/Outdoor	Indoor only	Indoor only	Indoor only	Indoor and Outdoor IP-66	Indoor and Outdoor IP-66	Indoor and Outdoor IP-66	Indoor and Outdoor IP-66	Indoor and Outdoor IP-66	Indoor and Outdoor IP-66	Indoor and Outdoor IP-66
Vandal-Proof				● (IK-10)	● (IK-10)	● (IK-10)				
Image Sensor	1/3" 3 megapixel progressive scan CMOS	1/3.2" 3 megapixel progressive scan CMOS	1/2.5" 5 megapixel progressive scan CMOS	1/2.7" 2 megapixel progressive scan CMOS	1/3" 3 megapixel progressive scan CMOS	1/2.9" 5 megapixel progressive scan CMOS	1/2.7" 2 megapixel progressive scan CMOS	1/3" 3 megapixel progressive scan CMOS	1/2.5" 5 megapixel progressive scan CMOS	1/3" 2 megapixel progressive scan CMOS
Maximum Video Resolution (Ratio)	1920 x 1080 (16:9) 2048 x 1536 (other)	1920 x 1536 (other)	2560 x 1440 (16:9) 2560 x 1920 (other)	1920 x 1080 (16:9) 1440 x 1080 (other)	1920 x 1080 (16:9) 2048 x 1536 (other)	2592 x 1440 (16:9) 2560 x 1920 (other)	1920 x 1080 (16:9) 1440 x 1080 (other)	1920 x 1080 (16:9) 2048 x 1536 (other)	2592 x 1440 (16:9) 2560 x 1920 (other)	1920 x 1080 (16:9) 1440 x 1080 (other)
Maximum Frame Rate	Up to 30 fps	Up to 25 fps	Up to 30 fps	Up to 30 fps	Up to 30 fps	Up to 30 fps	Up to 30 fps	Up to 30 fps	Up to 30 fps	Up to 30 fps
Lens	Fixed 2.8 mm, F2.0	Fixed 1.1 mm, F2.0	Fixed 1.37 mm, F2.0	Fixed 2.8 mm, F1.8	Fixed 2.8 mm, F1.85	Fixed 2.8 mm, F2.0	Fixed 3.6 mm, F1.8	Fixed 3.6 mm, F1.8	Fixed 2.8 mm, F2.0	Fixed 2.8 mm, F1.8
Minimum Illumination (Lux)	0.5 lux (colour) 0.25 lux (B/W) 0 Lux (B&W, IR-LED on)	0.5 lux (colour) 0.25 lux (B/W) 0 Lux (B&W, IR-LED on)	0.5 lux (colour) 0.25 lux (B/W) 0 Lux (B&W, IR-LED on)	0.1 lux (colour) 0.05 lux (B/W) 0 Lux (B&W, IR-LED on)	0.01 lux (colour) 0.008 lux (B/W) 0 Lux (B&W, IR-LED on)	0.01 lux (colour) 0.008 lux (B/W) 0 Lux (B&W, IR-LED on)	0.1 lux (colour) 0.05 lux (B/W) 0 Lux (B&W, IR-LED on)	0.2 lux (colour) 0.1 lux (B/W) 0 Lux (B&W, IR-LED on)	0.1 lux (colour) 0.05 lux (B/W) 0 Lux (B&W, IR-LED on)	1.0 lux (colour) 0.5 lux (B/W) 0 Lux (B&W, IR-LED on)
Infrared-Cut Removable Filter	●	●	●	●	●	●	●	●	●	●
IR Built-in	10 m	8 m	5 m	20 m	20 m Smart IR	20 m	30 m	20 m	30 m	30 m
Wide Dynamic Range (WDR)	●	●	●	●	●	●	●	●	●	●
3D Noise Reduction	●	●	●	●	●	●	●	●	●	●
LowLight+							●	●	●	
Angle Of View (H/V/D)	84° / 48° / 97°	180° / 180° / 180°	180° / 180° / 180°	120° / 66° / 140°	105° / 80° / 137°	87° / 65° / 110°	90° / 50° / 104°	70° / 40° / 80°	90° / 50° / 104°	96° / 54° / 108°
Gimbal	3-Axis Vertical: 60° / Horizontal 340° / Rotational 340°			2-Axis Vertical: 60° / Horizontal 240°	2-Axis Vertical: 60° / Horizontal 350°	2-Axis Vertical: 60° / Horizontal 240°				3-Axis Vertical: 60° / Horizontal 355° / Rotational 355°
Privacy Masks	3 zones			3 zones	3 zones	3 zones	3 zones	3 zones	3 zones	3 zones
Audio Codec		G.711, AAC	G.711, AAC							
2-Way Audio		●								
Built-in Microphone		●								
Built-in Speaker		●								
Ethernet Port	●		●	●	●	●	●	●	●	●
802.3af PoE	●	●	●	●	●	●	●	●	●	●
Onboard Storage Card Slot		MicroSD SDXC (max. 128 GB)	MicroSD SDXC (max. 256 GB)	MicroSD SDXC (max. 256 GB)	MicroSD SDXC (max. 256 GB)	MicroSD SDXC (max. 256 GB)				
Maximum Power Consumption	4.2 W	4.6 W	8 W	6.6 W	6 W	6 W	3.1 W	6.4 W	6.4 W	3.68 W
Video Format	H.264 MJPEG	H.264 MJPEG	H.265 H.264 MJPEG	H.265 H.264 MJPEG	H.265 H.264 MJPEG	H.265 H.264 MJPEG	H.265 H.264 MJPEG	H.264 MJPEG	H.265 H.264 MJPEG	H.265 H.264 MJPEG
Multi-Stream	●	●	●	●	●	●	●	●	●	●
ONVIF	●	●	●	●	●	●	●	●	●	●
Digital Zoom	10x	10x	10x	10x	10x	10x	10x	10x	10x	10x
Motion Detection	●	●	●	●	●	●	●	●	●	●
E-Mail Notification	●	●	●	●	●	●	●	●	●	●
Event Recording to SD Card		●	●	●	●	●				
Event Recording to NAS	●	●	●	●	●	●	●	●	●	●
IPv6 Support	●	●	●	●	●	●	●	●	●	●
Compatible Mount Accessories	DCS-37-1, DCS-37-2, DCS-37-3			DCS-37-1, DCS-37-2, DCS-37-3	DCS-37-1, DCS-37-2, DCS-37-3	DCS-37-1, DCS-37-2, DCS-37-3				DCS-37-1, DCS-37-2, DCS-37-3

HARDWARE FEATURES

SOFTWARE FEATURES

## VIDEO SURVEILLANCE

# Gigabit Smart Managed Surveillance Switches

D-Links range of switches specifically designed and engineered for video surveillance offer both PoE and ONVIF support for the ultimate all-in-one solution

## DGS-1100 / 1210 Series

The DGS-1100/1210 Series Gigabit Smart Managed Switches are the world's first PoE switches with ONVIF support specifically designed for Video IP Surveillance applications.

This allows it to recognise ONVIF devices and integrate seamlessly with your surveillance network. With the surveillance-optimised web interface, you can access real-time information on your surveillance network such as surveillance topology and device status, as well as PoE power and network bandwidth utilization. Auto Surveillance VLAN (ASV) function ensures the quality of real-time video for monitoring and control without compromising the transmission of conventional network data.

The DGS-1100/1210 Series switches include support for IEEE 802.3af/at and higher power budgets, allowing more PoE devices to be powered by the switch and for devices to be installed in remote locations without immediate access to power outlets. They offer high PoE power budgets – up to 370W – suitable for powering multiple network cameras.



Auto Surveillance function ensures the quality of real-time video for monitoring and control without compromise







D-Link is dedicated to setting new standards with our industry-leading business-class networking, wireless, and surveillance products. In fact, we're so confident in the reliability of our products, we offer warranties that truly demonstrate our commitment – giving you full assurance that we stand behind every product, every time.

Your network is the backbone of your business. Keeping it running is essential, even if the unexpected happens. D-Link Assist is a rapid-response technical support service that replaces faulty equipment quickly and efficiently. Maximising your uptime and giving you the confidence that instant support is only a phone call away.



## Limited Lifetime Warranty

The Limited Lifetime Warranty on our business class switching and wireless products reflects our commitment to provide even more quality, performance and value. These include:

- Smart Switches (including integrated fans and power supplies)
- Managed Switches (including integrated fans and power supplies but excluding modules and external power supplies)
- Modular switches (applies to DXS-3400 and DXS-3600 Series, including expansion modules but excluding fans and power supplies)
- Business Wireless Products and Unified Service routers (excluding external power supplies, excludes SoHo Access Points)

Register your eligible D-Link product within 30 days of purchase to qualify for the Limited Lifetime Warranty.

Register at <https://dlink.to/productregister>



## Complimentary Next Business Day Service, as Standard

All D-Link products with 5-year or Limited Lifetime warranty come with complimentary Next Business Day Service. D-Link will send out a replacement product to you on the next business day after acceptance of a product failure. On receipt of the replacement product, you simply arrange the return of the defective product to us. Any products with a 2-year/3-year warranty can also benefit from the Next Business Day advance replacement service when the optional 3-year warranty extension has been purchased.

For more information please refer to [eu.dlink.com/warranty](http://eu.dlink.com/warranty)

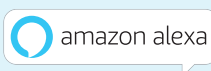




# The smart way to protect and control your home

Keep an eye on your home while you're away, save money by controlling your power budget, set your lights to turn on when it gets dark. **Your home, only smarter.**

- 1 Smart scheduling and automation
- 2 Cloud recording allows you to record video clips to off-site cloud storage
- 3 One-tap feature allows you to easily control multiple devices and bundle multiple actions into scenarios
- 4 Works with Amazon Alexa and Google Assistant voice control
- 5 Compatible with IFTTT (If This, Then That)
- 6 Quick and easy setup with integrated Bluetooth



The mydlink Wi-Fi Smart Plug and Power Strip are versatile and easy-to-use devices that allows you to control an electrical appliance from your smartphone or tablet, wherever you are. You can set automatic schedules to turn on or off appliances such as lamps, heaters or hi-fi at specific times and days of the week. They work with mydlink Smart Home devices<sup>1</sup>, Amazon Alexa, the Google Assistant and IFTTT, allowing you to voice-control and set up home automation.



	MODEL	DSP-W115	DSP-W118	DSP-W245
HARDWARE	Available socket type	CH/EU/FR/UK	EU/UK	EU
	Number of controllable sockets	1	1	4
	On device on/off button	•	•	•
	LED on/off indicator	•	•	•
	Manual on/off through app	•	•	•
	Scheduled on/off	•	•	•
	Energy monitoring			•
	Surge and overheat protection			•
FEATURES	Maximum load	• EU (type F): 3680 W / 16 A • FR (type E): 3680 W / 16 A • UK (type G): 3120 W / 13.5 A • CH (type J): 2400 W / 10 A	• EU (type F): 3680 W / 16 A • UK (type G): 3120 W / 13.5 A	• EU (type F): 3680 W / 16 A
	App Support	iOS & Android	iOS & Android	iOS & Android
	Amazon Alexa Support	•	•	•
	Google Assistant Support	•	•	•
IFTTT Support	•	•	•	

## DCH-S161

The mydlink™ Wi-Fi Water Leak Sensor (DCH-S161) is designed to give you additional peace of mind. Battery-powered means you can install the sensor anywhere to help you detect water leaks before it turns into serious flooding.

If the water sensor is triggered, a 90 dB alarm will sound and an LED will blink to give you audio and visual warnings. Push notifications to your mobile device let you keep tabs on your home on the go.

You can also receive audio alerts from your Google Assistant through the app on your smartphone, smart speakers, or Google Home devices so that you can know about a water leak even if you are too far away to hear the alarm on the water sensor.



**Water Detection Alerts**  
Instant push notification when water is detected



**Battery Powered**  
Lasts up to 1.5 years on 2 AA batteries



**Smart Home Compatible**  
Works with mydlink Smart Home Devices, the Google Assistant and IFTTT

<sup>1</sup> Please visit [www.dlink.com](http://www.dlink.com) for more information on mydlink products that support Smart Home functionality.



### DCS-2802KT-EU

The mydlink™ Pro Wire-Free Camera Kit consists of two Wire-Free Cameras (DCS-2800LH-EU) and a Hub (DCS-H100) which are ideal for Small Office/Home Office (SOHO) surveillance applications. The compact Wire-Free Cameras are suitable for day-time and night-time for both indoor and outdoor environments. It features built-in night vision, motion detection, and a free mobile app — so you can feel at ease when you're away from home.

**Includes**  
12 Months  
Cloud Recording  
Subscription  
**Worth €49.99**  
Store unlimited videos for  
up to 14 days



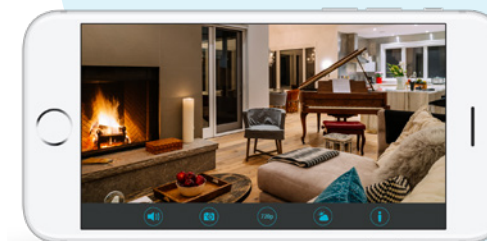
- 100% Wire-Free
- Full HD 1080p
- Advanced Motion Detection
- IP65 Indoor/Outdoor
- Long-lasting Rechargeable Battery

MODEL	DCS-8000LH DCS-P6000LH	DCS-8010LH	DCS-8100LH	DCS-8300LH	DCS-8515LH	DCS-8525LH	DCS-8600LH	DCS-2802KT-EU
Indoor/Outdoor	Indoor	Indoor	Indoor	Indoor	Indoor	Indoor	Indoor/Outdoor	Indoor/Outdoor
Maximum Video Resolution	720p	720p	720p	1080p	720p	1080p	1080p	1080p
Night vision	•	•	•	•	•	•	•	•
Range	Up to 5 m	Up to 5 m	5 m	5 m	5 m	5 m	7 m	7.5 m
Field Of View (H/V/D)	112° / 54° / 120°	96° / 53° / 120°	180° / 80° / 180°	137° / 71° / 167°	96° / 53° / 120°	98° / 52° / 114°	117° / 59° / 135°	115° / 64° / 140°
Wide Eye Panoramic View			•					
Motorised Pan/Tilt					•	•		
Pan Range					-170° to +170°	-170° to +170°		
Tilt Range					-10° / +95°	-20° / +90°		
Preset positions					•	•		
Auto Motion Tracking					•	•		
Panorama Position Selection					•	•		
2-Way Audio			•	•	•	•	•	•
Built-in Microphone	•	•	•	•	•	•	•	•
Built-in Speaker			•	•	•	•	•	•
PIR Motion Sensor								•
Wireless	802.11g/n	802.11g/n	802.11g/n	802.11b/g/n/ac	802.11b/g/n	802.11b/g/n	802.11b/g/n	Proprietary 866 MHz/2.4GHz
Bluetooth Setup	•	•	•	•			•	
Ethernet Port						•		•
Onboard Storage Card Slot		microSD/SDHC/SDXC card	microSD/SDHC/SDXC card	microSD/SDHC/SDXC card	microSD/SDHC/SDXC card	microSD/SDHC/SDXC card	microSD/SDHC/SDXC card	microSD/SDHC/SDXC
Number of cameras supported per hub								4
Optional single unit								DCS-2800LH-EU
App Support	iOS & Android	iOS & Android	iOS & Android	iOS & Android	iOS & Android	iOS & Android	iOS & Android	iOS & Android
Video Recording	Cloud / App	Cloud / microSD / App	Cloud / microSD / App	Cloud / microSD / App	Cloud / microSD / App	Cloud / microSD / App	Cloud / microSD / App	Cloud / microSD / USB / App
Amazon Alexa Support	•	•	•	•	•	•	•	•
Google Assistant Support	•	•	•	•	•	•	•	•
IFTTT Support	•	•	•	•	•	•	•	•
Sound / Motion Detection	•	•	•	•	•	•	•	•



### FREE mydlink app with Cloud Recording

The mydlink app takes you to the heart of your smart home, so you can easily control, monitor, and automate every smart home device, wherever you are, whenever you connect to the app. Control lights around your home without reaching for the switch. Save your home camera recordings straight to the cloud and enjoy your best memories. Turn everything off when you head to bed – mydlink takes the legwork out of your chores so you can spend time doing what you love.



COVR



## Covr your whole home in seamless Wi-Fi

Introducing Covr, the seamless Wi-Fi solution that's the perfect fit for modern living. It blankets every square inch of your home with high-speed AC1200 Dual-Band Wi-Fi so you have a signal everywhere, wherever you are. With Covr, you enjoy Wi-Fi that's stable, consistent, and truly seamless.



### High Performance

With up to 1,200 Mbps combined Wi-Fi speed, MU-MIMO technologies, and 2x3 (Rx) antennae at its core, Covr provides enough speed to support multiple devices undertaking data-intensive tasks simultaneously no matter where they are in the house.



### More Coverage

Covr's three discreet Covr Points cover up to 550 sq m – enough seamless Wi-Fi coverage for a wide variety of housing sizes and configurations. Wi-Fi dead zones are now a thing of the past.



### One Seamless Network

With Covr, there's just one wireless network name (SSID) for your entire home, no matter where you are, so as you move through the house, your device locks on to the strongest signal.

COVR

**COVR**  
Whole Home  
Mesh Wi-Fi  
System



MODEL		COVR-1102*	COVR-C1202*	COVR-C1203	COVR-2200	COVR-2202
GENERAL	Coverage aread	Up to 325 m <sup>2</sup>	Up to 325 m <sup>2</sup>	Up to 465 m <sup>2</sup>	Up to 325 m <sup>2</sup>	Up to 550 m <sup>2</sup>
	Number of units in pack	2	2	3	1	2
	Wi-Fi Certified EasyMesh™	●				
	McAfee Protected				●	●
WIRELESS	Wireless standard	Wave 2 Wireless AC1200	Wave 2 Wireless AC1200	Wave 2 Wireless AC1200	Wave 2 Wireless AC2200	Wave 2 Wireless AC2200
	Wireless speed	300 Mbps 2.4 GHz 867 Mbps 5 GHz	300 Mbps 2.4 GHz 867 Mbps 5 GHz	300 Mbps 2.4 GHz 867 Mbps 5 GHz	400 Mbps 2.4 GHz 867 Mbps 5 GHz x 2	400 Mbps 2.4 GHz 867 Mbps 5 GHz x 2
	Dual-band	●	●	●		
	Tri-band				●	●
	Smart Steering (automatic selection of optimal Wi-Fi band)	●	●	●	●	●
	Smart Roaming	●	●	●	●*	●
	Multi-User MIMO (MU-MIMO)	●	●	●	●	●
	Wireless Security	WPA2/WPA3	WPA2	WPA2	WPA2	WPA2
BACKHAUL	Dedicated Backhaul	● (Ethernet)			● (5 GHz wireless or Ethernet)*	● (5 GHz wireless or Ethernet)
	Backhaul technology	Gigabit Ethernet			Wireless AC 5 GHz @ 867 Mbps or Gigabit Ethernet*	Wireless AC 5 GHz @ 867 Mbps or Gigabit Ethernet
WIRE	LAN speed	Gigabit Ethernet	Gigabit Ethernet	Gigabit Ethernet	Gigabit Ethernet	Gigabit Ethernet
	Number of LAN ports per unit	2	2	2	2	2

\* with additional units of COVR-2200 or COVR-C1200

**MU-MIMO Technology**

Like having multiple routers in your home, Multi-User Multi-In-Multi-Out (MU-MIMO) sends data to multiple devices simultaneously to increase speed and efficiency. Your laptop, tablet, media player and game console can all receive data at the same time, with no need to wait in turn. You get more out of your home Wi-Fi network than ever before.



**Wi-Fi that Meets Your Needs**

Whether it's HD video streaming, video chats, or smart home devices, Covr responds to the need for speed in the modern home as consumers perform more data-intensive tasks on their Wi-Fi connected devices.



**Seamless Wi-Fi in Every Corner**

Unlike other whole home Wi-Fi systems that use only two receiving antennas, Covr has three to detect and receive more data from all your devices. You enjoy seamless connectivity no matter where you are in the house.

\* Not available for UK and Ireland

## CONSUMER WIRELESS



## Ditch the wires

The plethora of internet-connected devices around the home is now such that a really strong wireless connection is essential. Widespread coverage, strength of signal and bandwidth are all crucial factors that bring home wireless to the fore when connecting smartphones, tablets, computers, smart TVs, gaming consoles smart speakers and a whole host of home security and other smart devices. The D-Link range of consumer wireless devices offers the very latest in wireless tech, including the new Wave 2 standard for uncongested transmission at blazing fast speeds.

# EXO

## Smart Mesh Wi-Fi Routers

The Smart Mesh Wi-Fi Routers connect you to the future of home Wi-Fi. It's a powerful, intelligent home router featuring McAfee™ protection. This includes McAfee™ Smart Home Platform which provides always-on, up-to-date protection for all the devices connected to the router, as well as powerful parental controls.

What's more, it comes with a 2-year subscription of McAfee™ LiveSafe, providing antivirus, identity and privacy protection for all your PCs, Macs, smartphones and tablets.

Expanding your network cannot be simpler with D-Link Wi-Fi Mesh. Simply add a compatible Wi-Fi mesh extender to create a completely seamless Wi-Fi network.



Wi-Fi Mesh



Dual-Core Processor



Voice Control



Auto Update



CONSUMER WIRELESS

Wi-Fi Routers



MODEL	DIR-809	DIR-842	DIR-878	DIR-882	DIR-1960	DIR-2660	DIR-3060
Wireless standard	Wireless AC750	Wave 2 Wireless AC1200	Wave 2 Wireless AC1900	Wave 2 Wireless AC2600	Wave 2 Wireless AC1900	Wave 2 Wireless AC2600	Wave 2 Wireless AC3000
Wireless speed	300 Mbps 2.4 GHz 433 Mbps 5 GHz	300 Mbps 2.4 GHz 867 Mbps 5 GHz	600 Mbps 2.4 GHz 1300 Mbps 5 GHz	800 Mbps 2.4 GHz 1733 Mbps 5 GHz	600 Mbps 2.4 GHz 1300 Mbps 5 GHz	800 Mbps 2.4 GHz 1733 Mbps 5 GHz	400 Mbps 2.4 GHz 866 Mbps 5 GHz 1733 Mbps 5 GHz
Dual-band	•	•	•	•	•	•	•
Tri-band							•
D-Link Wi-Fi Mesh support					•	•	•
SmartConnect band steering			•	•	•	•	•
Multi-User MIMO (MU-MIMO)		•	•	•	•	•	•
Advanced SmartBeam™				•	•	•	•
Wi-Fi Extender Mode					•	•	•
Guest Wi-Fi network		•	•	•	•	•	•
Antennas	External	External	External	External	External	External	External
Type of WAN	Fast Ethernet	Gigabit Ethernet	Gigabit Ethernet	Gigabit Ethernet	Gigabit Ethernet	Gigabit Ethernet	Gigabit Ethernet
Wired LAN speed	Fast Ethernet	Gigabit Ethernet	Gigabit Ethernet	Gigabit Ethernet	Gigabit Ethernet	Gigabit Ethernet	Gigabit Ethernet
Number of LAN ports	4	4	4	4	4	4	4
USB port				USB 3.0 x 1, USB 2.0 x 1	USB 3.0 x 1	USB 3.0 x 1, USB 2.0 x 1	USB 3.0 x 1, USB 2.0 x 1
McAfee Smart Home Platform with powerful parental control					•	•	•
McAfee LifeSafe™ anti-virus for PC, Mac, smartphone & tablet					Unlimited installation, 2-year subscription	Unlimited installation, 2-year subscription	Unlimited installation, 2-year subscription
Google Assistance and Amazon Alexa voice control					•	•	•
DLNA certified media server				•	•	•	•

CONSUMER WIRELESS

Wi-Fi Extenders, Access Points, Hotspots



Model	DAP-1325*	DAP-1330*	DAP-1360	DAP-1610*	DAP-1620*	DAP-1665
Wireless standard	Wireless N300	Wireless N300	Wireless N300	Wireless AC1200	Wave 2 Wireless AC1300	Wireless AC1200
Wireless speed	300 Mbps 2.4 GHz	300 Mbps 2.4 GHz	300 Mbps 2.4 GHz	300 Mbps 2.4 GHz 867 Mbps 5 GHz	400 Mbps 2.4 GHz 867 Mbps 5 GHz	300 Mbps 2.4 GHz 867 Mbps 5 GHz
Dual-band				Yes	Yes	Yes
D-Link Wi-Fi Mesh support					• <sup>1</sup>	
Operational modes	<ul style="list-style-type: none"> <li>• Wi-Fi Extender</li> <li>• Wi-Fi client</li> </ul>	<ul style="list-style-type: none"> <li>• Wi-Fi Extender</li> <li>• Wi-Fi client</li> </ul>	<ul style="list-style-type: none"> <li>• Access point</li> <li>• Wireless Bridge</li> <li>• Wireless Bridge with access point</li> <li>• Wi-Fi extender</li> <li>• Wi-Fi client</li> </ul>	<ul style="list-style-type: none"> <li>• Wi-Fi Extender</li> <li>• Wi-Fi client</li> </ul>	<ul style="list-style-type: none"> <li>• Wi-Fi Extender</li> <li>• Wi-Fi client</li> </ul>	<ul style="list-style-type: none"> <li>• Access point</li> <li>• Wireless Bridge</li> <li>• Wireless Bridge with access point</li> <li>• Wi-Fi extender</li> <li>• Wi-Fi client</li> </ul>
Antennas	External	Foldable external	External	Foldable external	Foldable external	Detachable external
Wired LAN speed	Fast Ethernet	Fast Ethernet	Fast Ethernet	Fast Ethernet	Gigabit Ethernet	Gigabit Ethernet
Number of LAN ports	1	1	1	1	1	1
Passthrough socket						

<sup>1</sup> H/W version B1 only

3G / 4G LTE, Wi-Fi Adapters



Model	DWA-121	DWA-127	DWA-131	DWA-171	DWA-172	DWA-181	DWA-182	DWA-192	DWA-582	DWM-157	DWM-222
Connection type	Wireless N150	Wireless N150	Wireless N300	Wave 2 Wireless AC600	Wireless AC600	Wave 2 Wireless AC1300	Wave 2 Wireless AC1300	Wireless AC1900	Wireless AC1200	3G HSPA+	4G LTE Cat. 4
Connection speed	150 Mbps 2.4 GHz	150 Mbps 2.4 GHz	300 Mbps 2.4 GHz	150 Mbps 2.4 GHz 433 Mbps 5 GHz	150 Mbps 2.4 GHz 433 Mbps 5 GHz	400 Mbps 2.4 GHz 867 Mbps 5 GHz	300 Mbps 2.4 GHz 867 Mbps 5 GHz	600 Mbps 2.4 GHz 1300 Mbps 5 GHz	300 Mbps 2.4 GHz 867 Mbps 5 GHz	D/L: 21.6 Mbps U/L: 5.76 Mbps	D/L: 150 Mbps U/L: 50 Mbps
Dual-band				Yes	Yes	Yes	Yes	Yes			
Antennas	Internal	High-gain external	Internal	Internal	High-gain external	Internal	Internal	Internal	High-gain external	Internal	Internal
Integrated SIM card slot										Yes	Yes
WPS one button connection	Yes	Yes	Yes	Yes	Yes	Yes	Yes	Yes			
WPA support	WPA and WPA2	WPA and WPA2	WPA and WPA2	WPA and WPA2	WPA and WPA2	WPA and WPA2	WPA and WPA2	WPA and WPA2	WEP, WPA and WPA2		
Interface type	USB 2.0	USB 2.0	USB 2.0	USB 2.0	USB 2.0	USB 2.0	USB 3.0	USB 3.0	PCIe	USB 2.0	USB 2.0

\* Not available for UK and Ireland



CONSUMER WIRELESS

Wi-Fi Modem Routers



Model	DSL-3785	DVA-5593	DWR-116	DWR-730	DWR-921	DWR-932	DWR-953	DSR-250N	DSR-1000AC
Wireless standard	Wireless AC1200	Wave 2 Wireless AC2200	Wireless N300	Wireless N150	Wireless N300	Wireless N300	Wireless AC1200	Wireless N300	Wireless AC1750
Wireless speed	300 Mbps 2.4 GHz 867 Mbps 5 GHz	450 Mbps 2.4 GHz 1700 Mbps 5 GHz	300 Mbps 2.4 GHz	150 Mbps 2.4 GHz	300 Mbps 2.4 GHz	300 Mbps 2.4 GHz	300 Mbps 2.4 GHz 867 Mbps 5 GHz	300 Mbps 2.4 GHz	450 Mbps 2.4 GHz 1300 Mbps 5 GHz
Dual-band	•	•			•		•		•
Multi-User MIMO (MU-MIMO)		•							
Guest Wi-Fi network	•	•						•	•
Captive Portal								•	•
Antennas	Internal	Internal	External	Internal	External	Internal	External	External	External
Type of WAN	Gigabit Ethernet, VDSL2 Profile 8b/17a/30a (D/L:100Mbps,U/L:100Mbps), ADSL2/2+ Annex A	Gigabit Ethernet, VDSL2 Profile 8b/12a/12b/ 17a/35b (D/L:300Mbps,U/L:100Mbps), ADSL2/2+, SFP, 3G/4G LTE via USB dongle*	Fast Ethernet, 3G/4G LTE via USB dongle*	3G HSPA+ (D/L:21.6Mbps,U/L:5.76Mbps)	Fast Ethernet, 4G LTE Cat. 4 (D/L: 150Mbps,U/L:50 Mbps)	4G LTE Cat. 4 (D/L: 150Mbps,U/L:50 Mbps)	Gigabit Ethernet, 4G LTE Cat. 4 (D/L:150Mbps,U/L:50Mbps)	Gigabit Ethernet, 3G via USB dongle*	2 x Gigabit Ethernet, 3G via USB dongle*
WAN management protocol		TR-069							
Integrated SIM card slot				•	•	•	•		
Wired LAN speed	Gigabit Ethernet	Gigabit Ethernet	Fast Ethernet		Fast Ethernet		Gigabit	Gigabit	Gigabit
Number of LAN ports	4	4	4		4		4	8	4
Console port								RJ-45	RJ-45
VoIP ports		RJ-11 FXS x 2							
Fail-safe Internet		•	•		•		•	•	•
Outbound load balancing									•
USB port	USB 2.0 x 1	USB 3.0 x 2	USB 2.0 x 1	micro-USB x 1		micro-USB x 1		USB 2.0 x 1	USB 2.0 x 2
USB file sharing	•	•						•	•
microSD crd slot				•					
Battery powered				•		•			
OLED display				•					
VPN protocols								IPSec, PPTP/L2TP, GRE, SSL, OpenVPN	
VPN encryption								DES, 3DES, AES, Blowfish, Twofish, CAST128	
VPN throughput								50 Mbps	250 Mbps
Firewall throughput								750 Mbps	950 Mbps
L3 routing								Static	RIP v1/v2, OSPF, OSPFv3
Authentication								Internal User Database, Radius, POP3, LDAP, AD, NT Domain	
Bandwidth control								•	•
Command line, SNMP								•	•

\* Please check on the D-Link website for regional availability and compatibility of USB dongles

## POWERLINE



## No New Wires

Use your electrical wiring to extend your home network to places where you currently have no Internet access as your wireless signal is not strong enough to reach. The super-fast Powerline connection allows you to stream HD movies and music or play online games without lag around your home.



Model	DHP-601AV*	DHP-P601AV*	DHP-W311AV*	DHP-W611AV*
Package includes	2 x Powerline adapters	2 x Powerline adapters with power passthrough	1 x Powerline adapter 1 x Powerline Wi-Fi extender	1 x Powerline adapters with power passthrough 1 x Powerline Wi-Fi extender
Powerline standard	HomePlug AV2	HomePlug AV2	HomePlug AV	HomePlug AV2.1
Powerline speed	1000 Mbps	1000 Mbps	300 Mbps	1000 Mbps
Powerline MIMO	•	•		•
Ethernet port	1 x Gigabit per adapter	1 x Gigabit per adapter	1 x Fast Ethernet	1 x Gigabit per adapter
Wi-Fi standard			Wireless N300	Dual-band Wireless AC1200
Wi-Fi speed			300 Mbps 2.4 GHz	300 Mbps 2.4 GHz 867 Mbps 5 GHz

\* Not available for UK and Ireland

## USB-C



## One Port, Many Possibilities

D-Link's range of USB-C hubs and adapters allow you to instantly add additional connections to your computers and ultra-portable laptops. Simply connect to an available USB Type-C or Thunderbolt 3 port and enjoy additional ports, wired connectivity and video output in seconds. The compact designs means that you can easily slip into your pocket or laptop bag and take it with you.



Model	DUB-E130	DUB-H410	DUB-M420	DUB-M520	DUB-M530	DUB-M610	DUB-M810	DUB-V310
Number of ports	1	4	4	5	5	6	8	3
USB 3.0		4	2	2	2	2	3	
USB-C with power			1 (up to 60W)	1 (up to 60W)		1 (up to 100W)	1 (up to 100W)	
Gigabit Ethernet	1			1			1	
Display output			HDMI x 1	HDMI x 1	HDMI x 1	HDMI x 1	HDMI x 1	HDMI x 1, DP x 1, VGA x 1
Maximum Resolution			Up to 4K	Up to 4K	Up to 4K	Up to 4K	Up to 4K	Up to 4K <sup>1</sup>
Card reader					SD x 1 microSD x 1	SD x 1 microSD x 1	SD x 1 microSD x 1	
Compatible with	Computer with USB-C or Thunderbolt 3 port(s) running Microsoft Windows, Mac OS or Chrome OS Smartphones with USB-C port running Android OS <sup>2</sup>							

<sup>1</sup> Up to 4K (HDMI/DP), up to 1080p (VGA)

<sup>2</sup> Video output works with smartphones supporting DisplayPort Alternate Mode. Card reader and USB drive access function compatible with smartphones supporting USB On-The-Go (OTG).

PARTNER PROGRAMME



D-Link's success as a provider of network solutions has been built on its relationship and unrivalled commitment to its partners. Our **Value In Partnership+ Programme** not only builds on these relationships but also takes them to the next level by offering networking solutions, training and processes that increase your ability to be profitable with us, grow and diversify your business and provide excellent value to your customers.

Partner Benefits Summary\*

	REGISTERED D-Link	BRONZE D-Link	SILVER D-Link	GOLD D-Link
Access to online D-Link Partner Portal	Yes	Yes	Yes	Yes
VIP+ Newsletter	Yes	Yes	Yes	Yes
Free Online Certification Training and Resources	Yes	Yes	Yes	Yes
Webinars and Workshops	Yes	Yes	Yes	Yes
Online Product Tools	Yes	Yes	Yes	Yes
Sales Support Material	Yes	Yes	Yes	Yes
Exclusive Monthly Promotions	Yes	Yes	Yes	Yes
Deal Registration		Yes	Yes	Yes
Eligible for the Demo Purchase Programme		Yes	Yes	Yes
Priority Tech Support		Yes	Yes	Yes
Campaigns Centre for Lead Generation			Yes	Yes
Dedicated Account Management			Yes	Yes
Eligible for Sales Leads			Yes	Yes
Presence on D-Link Website (Where to Buy Section)			Yes	Yes
Invitation to Partner Roundtables				Yes

\* Benefits could vary according to the country, please contact your local D-Link representative for more information.

Visit [vipplus.dlink.com](http://vipplus.dlink.com) to join today!

Certification and Training

The D-Link Certification Programme is a **free online, on-demand** training programme that provides sales and technical coursework and exams focused on specific technologies: Wireless, Storage, Security, Switching and IP Surveillance. It's an opportunity for individuals in your organisation to become **D-Link Specialists**.



Designed for **sales professionals**, DSS courses focus on D-Link's market strategy, value proposition, product positioning, identifying opportunities and understanding customer needs.



Designed for **pre-sales technical professionals** to ensure that they are knowledgeable about networking concepts and the features, functionality and positioning of D-Link products.

Tools

Available only to our registered partners these system design and product selector tools will help you create and simulate the right network solutions pre-sale.



Product Selector Pro

A straight-forward tool which allows you to select and compare D-Link products, making it easy for our Partners to know which products to use when setting up or upgrading a network or adding functionality.



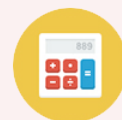
Wi-Fi Planner Pro

A Useful tool with an intelligent algorithm that provides a visual representation of RF signals for all of D-Link's wireless network products that simulates the Wi-Fi environment prior to actual deployment.



Surveillance Floor Planner Pro

A web-based tool designed to make your surveillance project planning easier, the Surveillance Floor Planner Pro enables you to select cameras and simulate camera placement and coverage based on your customer requirements.



Bandwidth Calculator

Network bandwidth and storage requirements are important when designing a surveillance system. The factors include the number of cameras, the image resolution, the compression type and ratio, frame rates and scene complexity.



GUI Emulator Pro

Allows our partners to easily familiarise with the features and functionality of the selected product – ideal for product training for employees, as well as helping you to answer your customers' support queries quickly and efficiently.

# D-Link®



#### Disclaimers and Trademarks

D-Link is a registered trademark of D-Link Corporation and its subsidiaries. D-ViewCam, D-ViewCam Plus, Vigilance, JustConnect, Covr, EXO, mydlink, VIP+, Central WiFiManager, D-Link Green, D-Link Assist and others registered by D-Link which may have not been included in this list are trademarks or registered trademarks of D-Link Corporation and/or D-Link Europe Ltd in Europe and/or other countries. Other brand and product names may be the trademarks and properties of their respective holders. All information is subject to change without notice. All rights reserved. Copyright ©2019 D-Link Europe Limited.

#### Exclusions of Liability

We have used all reasonable endeavours to ensure that the data within this Product Guide is accurate at the time of going to press and to correct any errors or omissions as soon as practicable after being notified of them. Guide specifics are subject to change without notice.

[www.dlink.com](http://www.dlink.com)

