



EXPERIENCE THE CONVENIENCE



EAGLE ELECTRIC VEHICLE CATALOGUE

WHY SUZHOU EAGLE

Leading Manufacturer Of Low Speed Electric Vehicles From China



15+ Years

experience since 1999 in electric vehicle business



100+ Models

for you to choose for various applications



5000+ Kilometers

testing on test track for every new model to ensure quality



10000+ Units

annual sales quantity to more than 80 countries

Suzhou Eagle Electric Vehicle Manufacturing Co., Ltd.



Suzhou Eagle Electric Vehicle Manufacturing Co., Ltd. was founded 1999, and it's a leading manufacturer specialized in designing and manufacturing 4-wheel electric vehicles, includes: electric golf cart, electric utility car, electric personal carrier, electric shuttle bus, electric industrial car, various customized electric vehicles based on standard ones, etc.. It has a workshop area of 20,000 square meters with 2 assembly lines inside. Its daily production capacity is 100 units per day; this can be adjusted with the order volume increasing. It has more than 400 employees including 70 engineers in R&D department and 10 engineers in QC department. Suzhou Eagle takes quality as its lifeline. Eagle invests a lot to make production moulds, jigs and checking moulds to ensure precise

component parts. Eagle invests a lot on checking machines like Salt spray test equipment for anti-rust ability, Rockwell hardness tester, Three-coordinate shock test-bed, Life test equipment, etc. to ensure component parts are produced and treated correctly. Eagle chooses the most top quality key component parts (Battery, Controller) to ensure the performance of its vehicles. In all, Eagle follows International Quality Standard to produce, control and inspect its electric vehicles. Hence, Eagle was awarded ISO9001-2008 Certificate in 2003 and Certificate of

WMI Code (L4F) in 2006.

Eagle people believe good service has the same importance as good quality. Eagle's sales persons can be reached in 24 hours x 365 days. Eagle's sales persons are willing to answer any emails from their customers within 24 hours. Eagle provides all the spare parts (Except battery) of its vehicles.

With effective management and specialized talents, Suzhou Eagle is dedicated to offering top quality products with competitive price and first class after-sales service.

SUZHOU EAGLE MILESTONE

The first generation of electric shuttle bus Free Series was ready for sell



1999

The first electric patrol car (EG6041) was ready for sell



2004

The first electric golf cart (EG2024) was ready for sell



2003

Moved to new factory in Wuzhong District from previous location at Tongyuan Road



2006

ISO9001 Certified



2006

WMI Certified, got VIN L4f



2006

Got EU street legal
vehicle certificate



2009

New factory in Suzhou
Industrial Park was
started to build



2012

National electric vehicle
testing track center was
unveiled the nameplate



2016

Office people moved
to new office in Suzhou
Industrial Park



2017

“Eagle people believe good service has the same importance as good quality. Eagle’s sales persons can be reached in 24 hours x 365 days. Eagle’s sales persons are willing to answer any emails from their customers within 24 hours. Eagle provides all the spare parts (Except battery) of its vehicles.”

Zapi ACE2 Controller

Model: EG2020ASZ04
System 48V/5KW AC

KEY COMPONENTS

Battery	8xT105(185Ah@5hr rate)
Motor	5KW AC Motor
Controller	Zapi ACE2(400A@2minutes)

PERFORMANCE

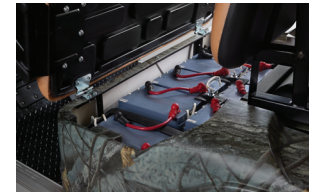
Passenger capacity	4
Range (loaded) based on flat road at a speed of 20km/h	>70 (km)
Max. speed (km)	
@12.49:1 gear ratio	35 km/h
Minimum turning radius (m)	3
Max. climbing ability (loaded)	
@ 12.49:1 gear ratio	22%
Max. movement after brake at speed of 20km/h	≤4m
Max. loading weight	320kgs
Net weight	640kgs

DIMENSIONS

Overall dimensions (mm)	2950x1340x1990
Wheelbase (mm)	1680
Front wheel tread (mm)	850
Rear wheel tread (mm)	975



ELECTRIC LIFTED GOLF CART



8xT105 Battery



Zapi ACE400(2A@2minutes)
Controller

Model: EG2040ASZ04
System 48V/5KW AC

KEY COMPONENTS

Battery	8xT105(185Ah@5hr rate)
Motor	5KW AC Motor
Controller	Zapi ACE2(400A@2minutes)

PERFORMANCE

Passenger capacity	6
Range (loaded) based on flat road at a speed of 20km/h	>55 km
Max. speed (km)	
@12.49:1 gear ratio	35 km/h
Minimum turning radius (m)	4.5
Max. climbing ability (loaded)	
@ 12.49:1 gear ratio	20%
Max. movement after brake at speed of 20km/h	≤4m
Max. loading weight	480kgs
Net weight	750kgs

DIMENSIONS

Overall dimensions (mm)	3560x1340x1990
Wheelbase (mm)	1680
Front wheel tread (mm)	850
Rear wheel tread (mm)	975



ELECTRIC LIFTED GOLF CART



8xT105 Battery



Zapi ACE2 Controller

Model: EG6063KA03
System 48V/5KW AC

KEY COMPONENTS

Battery	8xT105(185Ah@5hr rate)
Motor	5KW AC Motor
Controller	Zapi ACE2(400A@2minutes)

PERFORMANCE

Passenger capacity	6
Range (loaded) based on flat road at a speed of 20km/h	>75 (km)
Max. speed (km)	
@12.49:1 gear ratio	32km/h
Minimum turning radius (m)	4
Max. climbing ability (loaded)	
@ 12.49:1 gear ratio	20%
Max. movement after brake at speed of 20km/h	≤4m
Max. loading weight	530kgs
Net weight	745kgs

DIMENSIONS

Overall dimensions (mm)	3750X1400X1810
Min. ground clearance (mm)	140
Wheelbase (mm)	2450
Front wheel tread (mm)	1160
Rear wheel tread (mm)	1150



ELECTRIC PERSONEL CARRIER



8xT105 Battery



Model: EG204AKSZ03
System 48V/5KW AC

KEY COMPONENTS

Battery	8PCSxT105(185Ah@5hr rate)
Motor	5KW AC Motor
Controller	Zapi ACE2(400A@2minutes)

PERFORMANCE

Passenger capacity	6
Range (loaded) based on flat road at a speed of 30km/h	>80 (km)
Max. speed	
@12.76:1 gear ratio	32km/h
Minimum turning radius (m)	4.5
Max. climbing ability (loaded)	
@ 12.76:1 gear ratio	20%
Max. movement after brake at speed of 20km/h	≤4m
Max. loading weight	450kgs
Net weight	650kgs

DIMENSIONS

Overall dimensions (mm)	3670x1180x1980
Min. ground clearance (mm)	120
Wheelbase (mm)	2430
Front wheel tread (mm)	960
Rear wheel tread (mm)	980



ELECTRIC PEOPLE MOVER



8xT105 Battery



Zapi ACE2 Controller

Model: EG2068T05 HANDICAP
System 48V/5KW AC

KEY COMPONENTS

Battery	8xT105(185Ah@5hr rate)
Motor	5KW AC Motor
Controller	Zapi ACE2(400A@2minutes)

PERFORMANCE

Passenger capacity	4
Range (loaded) based on flat road at a speed of 20km/h	90 (km)
Max. speed (km)	
@12.49:1 gear ratio	32km/h
Minimum turning radius (m)	6
Max. climbing ability (loaded) @ 12.49:1 gear ratio	20%
Max. movement after brake at speed of 20km/h	≤4m
Max. loading weight	530kgs
Net weight	700kgs

DIMENSIONS

Overall dimensions (mm)	3860x1180x1890
Min. ground clearance (mm)	120
Wheelbase (mm)	3200
Front wheel tread (mm)	875
Rear wheel tread (mm)	985



ELECTRIC HANDICAP CART



8xT105 Battery

Zapi ACE2 Controller



Model: EG2068K05
System 48V/5KW AC

KEY COMPONENTS

Battery	8xT105(185Ah@5hr rate)
Motor	5KW AC Motor
Controller	Zapi ACE2(400A@2minutes)

PERFORMANCE

Passenger capacity	6
Range (loaded) based on flat road at a speed of 20km/h	90 (km)
Max. speed (km) @12.49:1 gear ratio	32km/h
Minimum turning radius (m)	6
Max. climbing ability (loaded) @ 12.49:1 gear ratio	20%
Max. movement after brake at speed of 20km/h	≤4m
Max. loading weight	530kgs
Net weight	700kgs

DIMENSIONS

Overall dimensions (mm)	3860x1180x1890
Min. ground clearance (mm)	120
Wheelbase (mm)	3200
Front wheel tread (mm)	875
Rear wheel tread (mm)	985



ELECTRIC PEOPLE MOVER



8xT185)105Ah Battery



Zapi ACE2 Controller

Model: EG2068KSZ02
System 48V/5KW AC

KEY COMPONENTS

Battery	8xT105(185Ah@5hr rate)
Motor	5KW Motor
Controller	Zapi ACE2(400A@2minutes)

PERFORMANCE

Passenger capacity	8
Range (loaded) based on flat road at a speed of 20km/h	75 (km)
Max. speed (km)	
@12.49:1 gear ratio	32km/h
Minimum turning radius (m)	6
Max. climbing ability (loaded)	
@ 12.49:1 gear ratio	20%
Max. movement after brake at speed of 20km/h	≤4m
Max. loading weight	640kgs
Net weight	740kgs

DIMENSIONS

Overall dimensions (mm)	4370x1180x1890
Min. ground clearance (mm)	120
Wheelbase (mm)	3200
Front wheel tread (mm)	875
Rear wheel tread (mm)	985



ELECTRIC PEOPLE MOVER



8xT105 Battery



Model: EG6063KB03
System 48V5KW AC

KEY COMPONENTS

Battery	8xT105(185Ah@5hr rate)
Motor	5KW AC Motor
Controller	Zapi ACE2(400A@2minutes)

PERFORMANCE

Passenger capacity	6
Range (loaded) based on flat road at a speed of 20km/h	>70 (km)
Max. speed	
@12.49:1 gear ratio	32km/h
Minimum turning radius (m)	4
Max. climbing ability (loaded)	
@ 12.49:1 gear ratio	20%
Max. movement after brake at speed of 20km/h	≤4m
Max. loading weight	530kgs
Net weight	730kgs

DIMENSIONS

Overall dimensions (mm)	3750X1400X1810
Min. ground clearance (mm)	140
Wheelbase (mm)	2450
Front wheel tread (mm)	1160
Rear wheel tread (mm)	1150



ELECTRIC PERSONEL CARRIER



8xT105 Battery



Zapi ACE2 Controller

Model: EG6311K02

System 72V 7KW AC

KEY COMPONENTS

Battery	9PCSxT875(145Ah@5hr rate)
Motor	72V 7KW AC motor
Controller	Zapi ACE2

PERFORMANCE

Passenger capacity	4
Range (loaded) based on flat road at a speed of 20km/h	>125 (km)
Max. speed	
@12.49:1 gear ratio	32km/h
Minimum turning radius (m)	5
Max. climbing ability (loaded)	
@ 12.49:1 gear ratio	20%
Max. loading weight	350kgs
Net weight	1010kgs
Driving mode	Rear wheel drive, motor direct driving

DIMENSIONS

Overall dimensions (mm)	3110x1500x1720
Min. ground clearance (mm)	170
Wheelbase (mm)	2300
Front wheel tread (mm)	1295
Rear wheel tread (mm)	1295



ELECTRIC CRUISE CART



9PCSxT875 Battery



Zapi ACE2 Controller

Model: EG6120K001
System 72V/7.5KW AC

KEY COMPONENTS

Battery	12pcs T105 (185Ah@5hr)
Motor	7.5 KW motor
Controller	Zapi AC2

PERFORMANCE

Passenger capacity	12
Range (loaded) based on flat road at a speed of 20km/h	90 (km)
Max. speed (km)	≤40km/h
@12.49:1 gear ratio	≤40km/h
Minimum turning radius (m)	7.2
Max. climbing ability (loaded) @ 12.49:1 gear ratio	15%
Max. movement after brake at speed of 20km/h	≤4m
Max. loading weight	720kgs
Net weight	1080kgs

DIMENSIONS

Overall dimensions (mm)	5180x1630x1950
Min. ground clearance (mm)	120
Wheelbase (mm)	3500
Front wheel tread (mm)	1385
Rear wheel tread (mm)	1385



ELECTRIC CLASSIC-VIP



12pcs T105 Battery



Satisfaction is Standard

1845 555

www.automak.com

  Automak

