



LiteShow III™

Wireless Presentation Adapter

Model Name: INLITESHOW3



Quick Installation Guide

Version: 2.0
Date: Aug 23, 2010

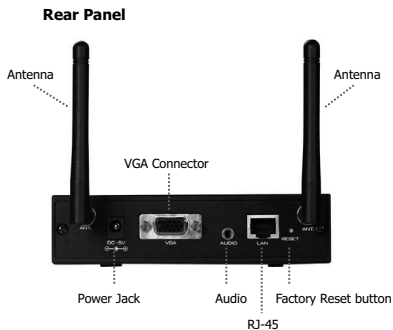
Package Contents

- LiteShow III module
- LiteShow USB token
 - **Client Software:**
 - Windows, MAC, MobiShow for Smartphone
 - **Applications:**
 - VAC (For Audio Projection)
 - VDD (For Virtual Extended Screen)
 - IB Maker (For changing the LiteShow Startup Screen)
 - PTG Converter (For MobiShow PTG function)
- Power Adapter (DC +5V, 2.6A)
- Antenna (2)
- Power Cord
- Mounting Screws
- Quick Installation Guide with Warranty Card

Physical Details

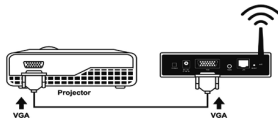
Front Panel





Installation

- 1) Connect the projector's antenna, and connect the VGA cable to the LiteShow VGA connector. Turn the projector on.



- 2) Turn on LiteShow. The LiteShow instructions below will display on the projector when LiteShow is ready for use.



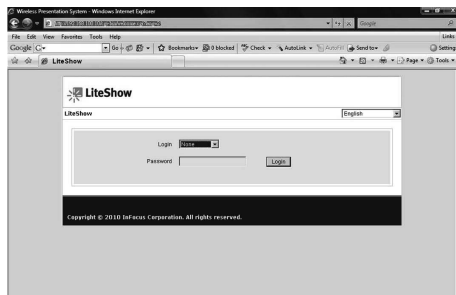
Windows 7/Vista/XP/2000

- 1) Verify that your computer's wireless connection is enabled and connect to the LiteShow wireless network.

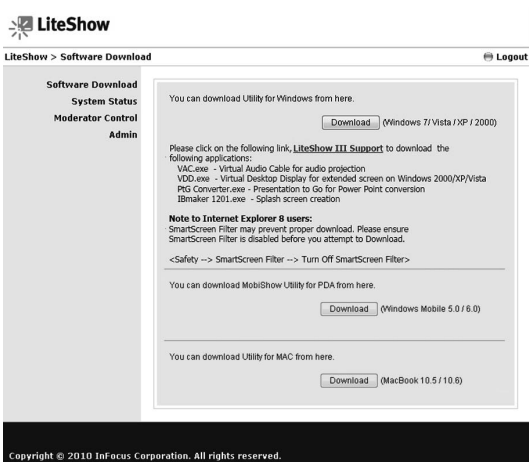


- 2) Open your browser. Although the LiteShow page should display automatically, you can also enter the IP address displayed on the projector into your web browser.

Note: The default IP address of LiteShow is 192.168.100.10.



- 3) Login as "None" (no password is required). Then download and install the Utility for Windows, and follow the Installation Wizard instructions. (You can also download the Utility from the LiteShow USB token.)



The screenshot shows the LiteShow web interface. At the top left is the LiteShow logo. Below it is a navigation menu with the following items: **Software Download**, **System Status**, **Moderator Control**, and **Admin**. On the top right, there is a **Logout** button. The main content area is titled "Software Download" and contains the following text:

You can download Utility for Windows from here.

(Windows 7/Vista / XP / 2000)

Please click on the following link, [LiteShow III Support](#) to download the following applications:
 VAC.exe - Virtual Audio Cable for audio projection
 VDD.exe - Virtual Desktop Display for extended screen on Windows 2000/XP/Vista
 PEG Converter.exe - Presentation to go for Power Point conversion
 IBmaker 1201.exe - Splash screen creation

Note to Internet Explorer 8 users:
 SmartScreen Filter may prevent proper download. Please ensure SmartScreen Filter is disabled before you attempt to Download.
 <Safety --> SmartScreen Filter --> Turn Off SmartScreen Filter>

You can download MobiShow Utility for PDA from here.

(Windows Mobile 5.0 / 6.0)

You can download Utility for MAC from here.

(MacBook 10.5 / 10.6)

At the bottom of the page, there is a black bar with the text: **Copyright © 2010 Infocus Corporation. All rights reserved.**

- 4) Once the installation is complete, a LiteShow shortcut will be available on your desktop.



- 5) Click the LiteShow shortcut and enter the **LOGIN CODE** visible on the projector.



- 6) Click the  button to start projection.


Note: To enable QuadView projection, click the desired Quadrant button (1-4).



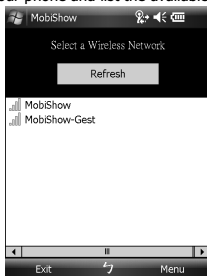
Windows Mobile 5/6

- 1) Verify that your Smartphone or PDA's wireless connection is enabled and connect to the LiteShow wireless network.
- 2) Open your browser. Although the LiteShow page should display automatically, you can also enter the IP address displayed on the projector into your web browser.

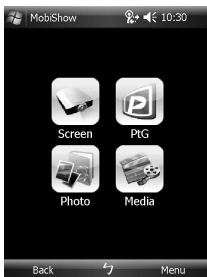
Note: The default IP address of LiteShow is 192.168.100.10.

- 3) Login as "None" (no password is required). Then, download and install the MobiShow Utility, following the Installation Wizard instructions. (You can also download the Utility from the LiteShow USB token.)
- 4) Once the installation is complete, a MobiShow shortcut  will be available on your desktop.

- 5) Click the MobiShow shortcut to launch the client software. MobiShow will turn on Wi-Fi on your phone and list the available Wireless Networks.



- 6) Connect to the desired LiteShow wireless network.
 7) MobiShow will connect to that access point and search for LiteShow devices automatically. When a LiteShow device is found, it will automatically login and the following main menu will be displayed on your phone.



- 8) Select the desired feature:
- **To project the screen of your phone**, click on the "Screen" icon.
 - **To do a PC-less presentation with Presentation-to-Go (PtG)**, select the "PtG" icon.
 - **To project the photos**, select the "Photo" icon.
 - **To play a video or MP3**, select the "Media" icon.


MacBook 10.4/10.5

- 1) Verify that your computer's wireless connection is enabled and connect to the LiteShow wireless network.



- 2) Download and install the Mac Utility, and follow the Installation Wizard instructions. (Or download the Utility from the LiteShow USB token.)
- 3) Once the installation is complete, a LiteShow shortcut will be available on your desktop.
- 4) Click the LiteShow shortcut and enter the **LOGIN CODE** visible on the projector.



- 5) Click the  button to start projection, or click the desired Quadrant button (1-4) for QuadView.





Warranty Card

Name	
Purchase Date	
Serial No.	
Address	
TEL	
FAX	
Email	

Purchased at	
--------------	--



Warranty Policy

Before contacting Technical Support, please review the User's Manual for this product. If you are unable to resolve the problem and/or if the product is damaged, please contact Tech Support.

For more information, go to: <http://www.infocus.com/>

The warranty does not cover the following:

- (1) Damage caused by accident, overloading, misuse, improper use or other types of damage not related to this product quality or design.
- (2) The product is damaged by unforeseeable natural disasters (flooding, fire hazard, earthquake, typhoon or thunder) or due to human error.
- (3) Attempt to open product housing, dismantle, attach other items or retrofit without written permission from InFocus.
- (4) Consumables or components.
- (5) Serial number on the product or component has been removed or damaged.
- (6) The product warranty is outdated.
- (7) Warranty without presenting a warranty certificate, or if presented but the warranty certificate is not properly marked with the date of purchase, stamped by the authorized agent or the marked information has been tampered with..

Warranty Services

If any fault has developed during the warranty period, after confirmation by InFocus, we will (1) Repair the product directly or (2) Replace the product with a new or remanufactured product, at InFocus' discretion.

Applicable to all products; when sending the product for services, you need to provide:

- (1) Your name, address and telephone number.
- (2) The warranty information and a proof of purchase.

Disclaimer

- We will not be responsible if it's believed the damage is caused by the customer, or other personnel, deliberately or by accident.
- We will not be responsible for any loss caused by continuous use or inability to use the product.
- We will not be responsible for costs due to damage other than repairs to InFocus products. Any damage or malfunction caused to other machines linked to InFocus products is not covered by this warranty.