

Next Generation ProLiant server technology

The new HP ProLiant family redefines datacentre expectations and economics with the world's smartest servers built for the cloud era.

As demand for enterprise and consumer cloud services explodes, IT departments struggle to keep pace with growing IT scale and complexity. To respond effectively to the cloud era, IT needs smarter systems that learn, connect and adapt. That's the next-generation HP ProLiant servers with Active Insight technologies. The new ProLiant family features a "server IQ" that is over ten times higher than that of the average server.

By collecting over 1,600 system parameters and connecting servers to tools for maintenance, application optimization, energy efficiency and support, ProLiant servers help IT organisations increase application

uptime and reduce operation costs for a fraction of the effort typically required of system administrators. Guided by the "Client-z-Innovation" design philosophy, HP engineers and developers created over 150 innovations that help clients get tasks done simply, reliably and with confidence. Clients who have trusted ProLiant for years will be instantly familiar with the consistent experience and yet appreciate the attention to detail of the new features and design.

World's most self-sufficient servers

HP ProLiant servers with ProActive Insight architecture

Integrated Lifecycle Automation	Dynamic Workload Automation	Automated Energy Optimisation	Proactive Insight Experience
Servers so intelligent they eliminate tedious, time-consuming tasks	Servers so intelligent they converge storage, compute and I/O to turbo-charge application performance	Servers and infrastructure so intelligent they maximise use of space, power and cooling	Servers so intelligent they redefine the service experience
<ul style="list-style-type: none">Intelligent Provisioning: Fully integrated system and OS configuration tool eliminates 45% of the steps, so you can deploy servers 3x fasterActive Health: Troubleshoot 5x faster, monitor and log over 1,600 system parameters and 100% of configuration changesSmart Update Built-in: Allows administrators to deploy updates 3x faster, with 93% less downtime during updatesDeploy servers quickly and easily to keep pace with business growthSimplify the out-of-the-box experience – no physical media or downloads are needed for firmware, drivers, tools or agentsReduce downtime with continuous monitoring of server healthKeep server firmware and software up to date with minimal operator interventionFree server administrators to focus on strategic IT initiatives like cloud and virtualisation	<ul style="list-style-type: none">Solid State Optimised: For solid-state to deliver a dynamic balance of 6x faster performance versus previous generations and capacitySmart Data Protection: 50% more drive capacity, and 2x the number of drives in one RAID array, new multiple smart data protection technologies are now built inSmart Data Services: Orchestrated with real-time analysis to build the future of converged storageIncrease storage capacity quickly and easily to stay ahead of data growthAccelerate the performance of application workloads with faster data throughputProtect data from hardware failures, application crashes and human errorsImprove uptime with advanced memory error detectionScale capacity and performance in a cost-effective manner	<ul style="list-style-type: none">Thermal Discovery Services: Reduce energy usage and increase compute capacityLocation Discovery Services: Optimise workload placement with servers that self-identify and inventory themselvesPower Discovery Services: Eliminates power configuration errors, precisely tracks power usage by rack and server by server, while eliminating manual record keepingReduce power consumption and operations costsSqueeze more IT out of every bit of power and cooling capacitySave valuable staff time by avoiding tedious manual discovery and inventory processesAvoid datacentre outages by reducing the risk of power redundancy failures and circuit overloadsScale datacentre capacity by optimising the use of power and cooling	<ul style="list-style-type: none">Insight OnLine: The industry's first cloud-based, IT management and support portalInsight Remote Support: 24/7 remote monitoring with automatic notification on potential hardware problems and accurate resolution in less timeProactive Services: Innovative new services based on HP ProActive insight architecture improve infrastructure uptime and performanceSave time managing IT infrastructure anytime, anywhereAutomate routine tasks to reduce costs and time spent troubleshootingPrevent problems before they occur to keep business running smoothlySimplify the support experience with automated 24/7 event monitoring and support case generationIncrease the availability of IT systemsReclaim datacentre capacity by notification of problems and increase resolution timeAccelerate the resolution of problems and increase first time fix rate with HP remote support

HP ProLiant Gen8 E and P series models

e-Series Server Models (Essential)	p-Series Server Models (Performance)
Redefining essential and easy-to-use computing	The datacenter standard with leading performance and versatility
<ul style="list-style-type: none">High-Speed I/O Bandwidth and memoryEssential Storage Performance1 GB Embedded EthernetGold level 92% Power EfficiencyIndustry Leading Management with Insight Control¹3-1-1 Warranty offering	<ul style="list-style-type: none">Top Performance with 2x I/O and memoryLeading Storage PerformanceMost Flexible Integrated Networking optionsBest Power Management and 94% Efficiency²Industry Leading Management with Insight Control¹Enhanced User Experience and Serviceability3-3-3 Warranty offering

¹Insight Control is available on the e-Series rack servers only

²Intelligent Power Discovery Built-in

³Based on all Performance models

HP BladeSystem c-Class: the world's most advanced blade infrastructure just got better

The ever increasing business demand for instant access from anywhere to any service in real-time is driving the need for a highly virtualized and flexible environment. This will be built on a software defined data center that requires a converged infrastructure with embedded intelligence – that only HP can deliver. It starts with HP BladeSystem, the world's most advanced blade infrastructure with next generation technologies in a future-proof design. As the leading platform for virtualization and cloud, HP BladeSystem delivers breakthrough data center economics with the next generation networking for performance, scalable storage and intelligence for unprecedented insight into your data center.

IDC indicates in a survey that customers have been able to cut data costs by 68% using HP BladeSystem and pay back their initial investment in just over 7 months, a significant factor given the financial constraints most IT organizations are facing.

Access IDC white paper on www.hp.com/go/bladeidc.

Next generation technologies in a future-proof design



The new HP BladeSystem C7000 Platinum enclosure delivers the **highest performance** including the fastest connectivity with 56 GB FDR InfiniBand, 40 GB Ethernet for high performance, low-latency networking and 16 GB Fibre Channel-ready with superior scalability for storage.

The new **3R 24 GB RDIMM HP SmartMemory**, designed for the HP ProLiant BL460c and BL660c Gen8 Server Blades, delivers greater capacity and a **25% increase in performance¹** for new levels of scalability for tomorrow's virtualization needs.

The **HP Mellanox SX1018** switch is the first to provide 40 GB downlinks² to each blade server enabling InfiniBand-like performance in an Ethernet blade switch. The world's fastest Ethernet blade switch from HP, another industry first, the low-latency Ethernet switch delivers over **5X more bandwidth³** and **4X faster application response time⁴**.

Achieve up to 115.2 TB⁵ of shared storage in a single enclosure with the next generation **HP D2220sb Storage Blade**, ideal for customers looking to move to virtualization. It has the flexibility to add cost-effective, high-density direct attached storage & can be easily upgraded to shared storage.

Infrastructure intelligence is an essential foundation for a software defined data center



HP Power Discovery, now available with the HP BladeSystem Platinum Enclosure, **automates power configuration and tracking to reduce unplanned downtime.** In addition, **Location Discovery** now allows customers to **pin point and track server and enclosure location remotely from your central console.**

This new intelligence combines location with real-time, auto-populated power and thermal data, integrated within HP Insight Control, to automate many of the tedious, time consuming processes.

Now HP Virtual Connect builds on the wire-once simplicity with the new **Virtual Connect 4.0** which adds intelligence to **dynamically allocate underutilized bandwidth** ensuring customers achieve the highest return on their networking investment. HP Virtual Connect extends end-to-end integration with enterprise networking tools: **Priority Queue QoS**, enabling you to define the right service level for each application; and **sFlow** with real-time network monitoring for intelligent capacity planning. In addition, HP Virtual Connect continues to reduce costs by 47%⁶ and simplifies your network by now converging your LAN and SAN at the aggregation layer with **Dual HPC FCoE**.

Ultimate efficiency and performance for all your virtual clients



Today HP BladeSystem is the only blade infrastructure that can support a **virtualized client solution** and is architected for any workload from client to cloud. The result is breakthrough economics that **reduces costs to up to 60%⁷**, finally making it possible to mobilize your entire workforce.

The latest HP BladeSystem solution can scale from a task worker to a high-end workstation user, delivering a new level of user experience and productivity. In fact, HP BladeSystem is the first and only blade infrastructure to enable workstation-class graphics performance. The new **WS460c blade workstation** is the first to provide multiple virtualized graphic cards with 8 GPUs per blade that delivers **4x more users per workstation blade server⁸**. This industry leading performance allows power users in industries like manufacturing, oil & gas, and finance to access their full desktop from any mobile device, anywhere, and anytime.

Additional information

www.hp.com/go/bladeidc
www.hp.com/go/virtualconnect
www.hp.com/partners/emea/virtualconnect

HP Qualified Options

Whether your customer is upgrading an existing ProLiant server or IT infrastructure, or buying a new HP ProLiant Gen8 server, HP offers a wide range of innovative and intelligent options and services.

A comprehensive, end-to-end portfolio of qualified smart options enables you to unleash the full potential of HP ProLiant servers and helps customise your solutions to drive business outcomes. The broad portfolio of HP ProLiant options covers the full range of customer needs – from the processor, to memory, hard drives, controllers and network interface controllers (NICs) – to the rack and power infrastructure and beyond.

These offerings are HP Qualified Options (HPQO) – which are tailored for HP ProLiant, Integrity and Storage systems – a designation that:

- gives customers the confidence that the options have gone through a rigorous testing process
 - Are easy to install, maintain and upgrade
- With Gen8 of ProLiant servers, HP has introduced innovative Smart Storage and Memory technologies as well as game-changing ProLiant networking solutions. These solutions bring some significant new value for your customers by providing for significant increases in performance and power efficiencies.

For further information on the benefits of HP ProLiant options, visit: www.hp.com/go/qualifiedoptions

HP Qualified Memory

HP provides the highest quality memory for HP servers and streamlines the warranty administration process. And HP ProLiant server memory is an HP Qualified Option, which means every genuine HP DIMM has been through our rigorous qualification process to ensure its compatibility, performance and reliability. In essence, customers who buy HP memory get additional value through reduced downtime, data reliability and increased productivity.

Gen8 ProLiant servers are optimised for dynamic workload acceleration and the Smart Memory significantly contributes to that. HP Smart Memory technology has enhanced data path performance, significantly higher performance and error-handling intelligence for today's business speed and scale.

HP ProLiant Gen8 Smart Storage

Today's IT needs are facilitating the shift to a converged infrastructure to improve efficiencies and reducing complexity. A key element of converged infrastructure is HP Smart Storage. It consists of the storage ecosystem including controllers, drives and disk enclosures and management applications. HP Smart Storage improves IT experience:

- Simplifies infrastructure management
- Reduces serviceability errors
- Enhances data availability
- Increases performance
- Increases storage density

HP Smart Storage is optimised for solid state technology to deliver a dynamic balance of performance and capacity.

- With the introduction of ProLiant Gen8 servers, we are moving to a new hard drive – HP SmartDrive. This new drive allows for a significantly higher performance, easier management, increased capacity and reduced maintenance errors. Active Health data will allow faster issue resolution and clearer visibility to returns/failure modes.

HP hard-disk drives

Categories	HP PCI-e Workload Accelerators	HP Enterprise SSDs
Performance	Mainstream Value	Performance Drive form factor Mainstream Drive form factor Value Drive form factor
Connectivity	PCI-e PCI-e / Mezz PCI-e	6 GB SAS 6 GB SAS or 6/3 GB SATA 6/3 GB SATA 6 GB SATA
Endurance (Drives Writes Per Day)	High endurance -25 DWPD Mainstream endurance -10 DWPD Value endurance -1 DWPD	High endurance -25 DWPD Mainstream endurance -10 DWPD Value endurance -1 DWPD
Capacities	350/700 GB 365/785 GB 1500/3010 GB / 3000 GB 1600 GB 200/400 GB	200/400 GB 100/200/400/800 GB 100/200/400 GB 100 GB
Typical Workloads	Applications that require lowest latency response times	Unrestricted read/write applications Mixed read/write applications High read/write applications
Enterprise Features:	Full DataPath error detection, SmartSSD Wear Usage support for SSDs, and typically with surprise power loss protection	

With over 5 million SAS Smart Array controllers shipped, HP Smart Array controllers have delivered several innovations for protecting customer data, including the first RAID, first RAID 6/60, first Cache and first Flashback write cache. HP Gen8 Smart Arrays bring significant enhancement to performance, manageability and flexibility. www.hp.com/products/harddisksdrives www.hp.com/products/smartarray

HP Smart Array Advanced Pack

Deliver value-added software features for SAS Smart Array controllers which will further enhance the performance, reliability and availability of customer data.

HP ProLiant Gen8 Networking

HP's FlexNet Adaptors for ProLiant Gen8 bring some significant new value for our customers including increased performance, enhanced security, power management and flexibility. With Precision Time Control feature, customers can time stamp all communications so they know how long the traffic is taking to get to and from the business.

Some of the HP FlexNet Adaptors are Energy Efficient Ethernet (EEE) compliant, thereby reducing the power consumption to significant levels. Lastly for Gen8, we offer the flexibility of FlexLOM – a new and innovative way to handle server networking. www.hp.com/Server/networking

HP SmartCache

- Controller-based read caching solution that accelerates workload performance by caching frequently accessed data ("hot data") on SSDs connected to the HP Smart Array controller.
 - Integrates seamlessly into your datacenter, requiring no application or operating system changes.
 - Manage your array and HP SmartCache through a common management tool – the HP Array Configuration Utility (ACU).
- For more information please visit: www.hp.com/go/smartcache

HP ProLiant Server Platforms	ILO Essential HP ProLiant Gen8 e-series	ILO Advanced All HP ProLiant	Insight Control All HP ProLiant	Insight Online ¹ All HP ProLiant Gen8
Service and Support Events	Yes ²	Yes ²	Yes ²	Yes ²
Channel Partner Access	Yes	Yes	Yes	Yes
Contracts and Warranty Management	Yes	Yes	Yes	Yes
VMware[®] vCenter Server Integration	Yes ³	Yes	Yes	Yes
Microsoft[®] System Center Integration	Yes	Yes	Yes	Yes
Virtual Machine Management	Yes	Yes	Yes	Yes
Server Development	Yes	Yes	Yes	Yes
Console Record, Replay	Yes	Yes	Yes	Yes
Server Migration, Performance Management	Yes	Yes	Yes	Yes
Virtual Serial Port Record, Replay, Remote Sessions	Yes	Yes	Yes	Yes
Advanced Power Management, Global Collaboration	Yes	Yes	Yes	Yes
Health and Alerting	Yes	Yes	Yes	Yes ⁴
Virtual Media, Folders, Keyboard, Video and Mouse	Yes	Yes	Yes	Yes
HP ILO Management Engine⁵	Yes	Yes	Yes	Yes

¹HP ILO Management Engine, in all ProLiant Gen8 servers, includes: HP ILO Mobile App, Set of Sensors, Thermal Management, HP Intelligent Provisioning, HP Agentless Management, HP Active Health System

Additional information

To find out more about how HP Insight Management can help you unlock the potential of your infrastructure, contact your local HP sales representative or authorised HP partner, or visit www.hp.com/go/insight

To see how other customers have benefited by implementing HP Insight Management, read the IDC white paper at www.hp.com/go/insightidc

²Windows CMS managed nodes
³Available with standard HP ProLiant contract, warranty and HP Care Pack services in the HP Support Center Portal
⁴Available with latest version of Insight Remote Support and customer opt-in

HP Rack and Power solutions

HP Rack and Cooling Systems

	1000 mm Depth	1075 mm Depth	1200 mm Depth	
	Pallet	Shock Pallet	Pallet	Shock Pallet
47U 600 mm wide	BW912A - HP Intelligent Rack	BW913A - HP Intelligent Rack	BW913A - HP Intelligent Rack	BW914A - HP Intelligent Rack
42U 600 mm wide	AF464A - HP v142 Rack	BW903A - HP Intelligent Rack	BW904A - HP Intelligent Rack	BW904A - HP Intelligent Rack
42U 800 mm wide		BW917A - HP Intelligent Rack	BW918A - HP Intelligent Rack	BW920A - HP Intelligent Rack
34U 600 mm wide	BW959A - HP Intelligent Rack	BW966A - HP Intelligent Rack	BW959A - HP Intelligent Rack	BW900A - HP Intelligent Rack
22U 600 mm wide	AF422A - HP 1000G2 Rack	AF422A - HP 1000G2 Rack		
14U 600 mm wide	29230-B22 - HP 1000G2 Rack	29230-B22 - HP 1000G2 Rack		
Warranty	3-year HP warranty (3-0-0), HP Server and Storage hardware support. Covers rack and power products = "Integrated" Care Pack. ¹ support.			
Information	For more information and detailed specs visit: www.hp.com/usa/rackandpower			
Feedback	For questions or support contact rackpower@hpe.com			

HP KVM and Insight Console Switches

Workload Console Switch	4 Ports	8 Ports	16 Ports	32 Ports
Analogue Console Switch	AF611A - HP 1x4 Console Switch	AF616A - HP 0x2x8 Console Switch	AF617A - HP 0x2x16 Console Switch	
Digital Console Switch		AF618A - HP 0x2x16 Console Switch - VM/CAC Support	AF618A - HP 0x2x16 Console Switch - VM/CAC Support	AF619A - HP 0x2x32 Console Switch - VM/CAC Support
Analogue Console Switch		AF620A - HP 1x4x8 IP Console Switch - VM/CAC Support	AF621A - HP 2x16x16 IP Console Switch - VM/CAC Support	AF622A - HP 4x16x32 IP Console Switch - VM/CAC Support
Warranty	3-year HP warranty (3-0-0), HP Server and Storage hardware support. Covers rack and power products = "Integrated" Care Pack support. ¹			
Information	For more information and detailed specs visit: www.hp.com/usa/rackandpower			
Feedback	For questions or support contact rackpower@hpe.com			

HP Uninterruptible Power Supplies (UPS)

	1-phase power input and output	3-phase power input and output				
	Product Number	Power Output (VA/Watt)	Form Factor	Product Number	Power Output (VA/Watt)	Form Factor
Tower	AF447A - HP T750 G2	750/500				
Tower & Rack	AF489A - HP T1000 G3	1000/670				
Rack	AF461A - HP R1500 G3	1500/950	2U	AF432A - HP R8000/3	8000/8000	6U
	AF471A - HP R1500 G3	1500/1000	1U	AF430A - HP R12000/3	12000/12000	6U
	AF461A - HP R5000	5000/4500	3U			
	AF463A - HP R7000	6300/6300	4U			
Parallel Rack				AF439A - HP RP3600/3	36 kVA/36 kW, exp. up to 60 kVA/60 W	preconfigured in 42U Rack
Warranty	3-year HP warranty (3-0-0), HP Server and Storage hardware support. Covers rack and power products = "Integrated" Care Pack support. ¹ For HP RP3600/3 see QuickSpecs					
Information	For more information and detailed specs visit: www.hp.com/usa/rackandpower					
Feedback	For questions or support contact rackpower@hpe.com					

Power Distribution Units (PDU)

	1-Phase	3-Phase		
	Product Number	Power Output (VA/Watt)	Product Number	Power Output (VA/Watt)
Intelligent PDU	AF252A	AF256A	AF272A	
Monitorable PDU	AF510A, AF519A (half height)	AF508A	AF507A	AF917A (half height)
Modular PDU	252663-B13	252663-B34	AF513A	AF518A
	252663-B24	252663-B31		
Warranty	3-year HP warranty (3-0-0), HP Server and Storage hardware support. Covers rack and power products = "Integrated" Care Pack support. ¹			
Information	For more information and detailed specs visit: www.hp.com/usa/rackandpower			
Feedback	For questions or support contact rackpower@hpe.com			

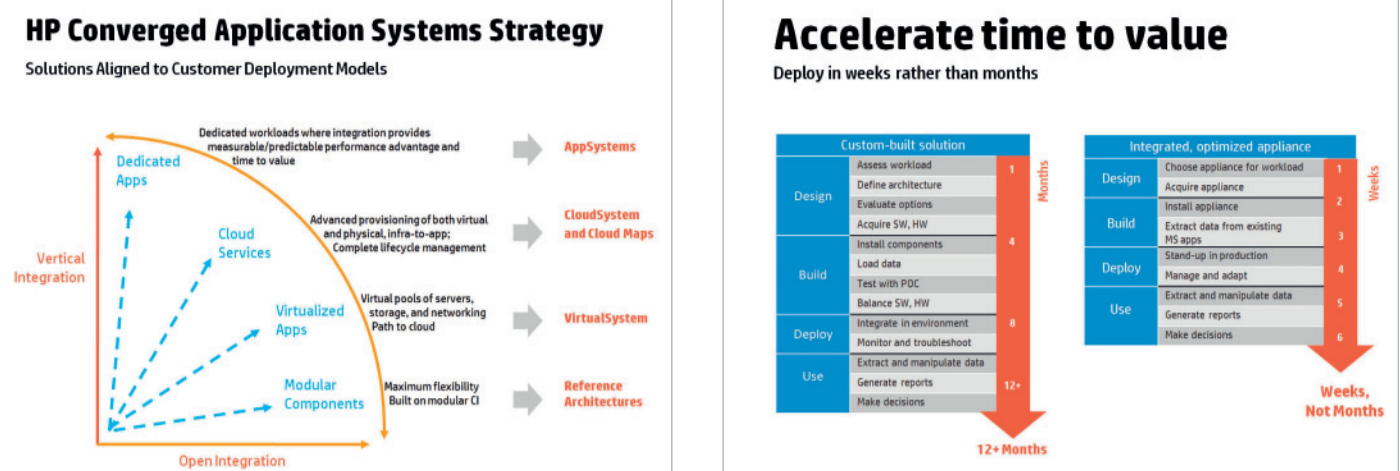
¹"Integrated" Care Pack support. Cover all the options included in your rack with a single convenient service package. HP Care Packs for rack-mounted ProLiant servers, BladeSystem enclosures and storage include coverage for HP-branded rack options (rack console – TFF/keyboard, KVM switches), qualified UPSes (tower UPSes, rack UPSes not exceeding 12 kVA), and other qualified rack and power options (PDUs). These items are covered at the same service level and for the same period as the server, at no additional cost.

HP Converged Systems

Accelerate your IT to achieve better business results

HP Converged Systems simplify and extend HP Converged Infrastructure by integrating hardware, software and services into turnkey solutions. The HP Converged System portfolio includes HP VirtualSystem, HP CloudSystem, and HP AppSystems which are optimized for application delivery in virtualized, cloud and dedicated environments to:

- Accelerate time to application value
 - Optimize application delivery and IT efficiency
 - Eliminate islands of incompatible IT
- HP Converged Systems deliver a systematic approach to optimize application performance and standardize IT operations across the data center with a common architecture, management and security model across the data center.



HP VirtualSystem

HP VirtualSystem solution simplifies and extends HP Converged Infrastructure into optimized server virtualization solutions for Microsoft Hyper-V, Red Hat and VMware vSphere, delivering a complete, high-performance virtualized environment with pre-tuned server, storage, networking, and systems management.

HP VirtualSystem for Superdome 2 / HP-UX is specifically designed for mission-critical UNIX workloads and helps organizations achieve rapid deployment, reduced complexity, and advanced management of their most critical virtualized environments.

HP extends the VirtualSystem portfolio to enterprise client virtualization providing the fastest, path to agile and efficient virtualized solutions based on Citrix XenDesktop on Microsoft Hyper-V or VMware vSphere.

More info on HP VirtualSystem: www.hp.com/go/virtualsystem

HP AppSystems

HP has introduced AppSystems, a portfolio of integrated systems optimized to deliver maximum performance for dedicated business applications environments.

HP AppSystems are:

- Complete business application solutions, which enable proven turn-key deployments for faster time to application value.
- Single workload optimized to deliver exceptional quality of service for high productivity at lower TCO.
- Agile to leverage existing investments and rapidly scale to meet changing business needs.

HP Business Decision Reference Architecture optimized for Microsoft SharePoint 2013 and SQL Server 2012 are used to deliver a Self Service, Business Intelligence Reference Architecture that empowers business users to accelerate analysis and decision making from months to days.

HP AppSystem for SAP in-Memory Appliance (SAP HANA) – An optimized system for processing massive quantities of real-time data in server memory for immediate results from analyses and transactions.

HP AppSystems for data management help you improve data access, simplify and accelerate data capture and deliver a single source of truth for accurate business decisions.

HP AppSystem for Microsoft SQL Server 2012 Parallel Data Warehouse is the industry's most scalable, highest performing and easiest-to-deploy data warehouse for SQL Server.

HP Business Data Warehouse Appliance optimized for Microsoft SQL Server reduces the complexities and costs of virtualizing many minimal clients when deploying data warehouses, in a fast, affordable and easy-to-deploy solution.

HP Fast Track Data Warehouse for Microsoft – Data warehouse solutions for SQL Server based on HP Converged Infrastructure for predictable, consistent performance and the smallest footprint.

HP Database Consolidation Solution optimized for Microsoft SQL Server enables consolidation of thousands of transactional databases into a single, virtual environment to simplify database management with SQL Server and reduce the cost of operations.

HP CloudSystem

As part of the HP Converged Cloud portfolio, HP CloudSystem enables enterprises and service providers to build and manage services across private, public and hybrid cloud environments on a simplified, integrated architecture.

HP CloudSystem Enterprise business full-scale deployments of private and hybrid cloud environments: Unified management of enterprise-grade application and infrastructure services; highly automated service lifecycle management; open and extensible architecture for increased agility.

HP CloudSystem Service Provider facilitates deployment of public and hosted private clouds that deliver complete service aggregation and management; aggregate cloud services for public or hosted private cloud, optimized for multi-tenancy, customer-unique portal experience, pre-integrated, but modular.

Get started with HP CloudSystem Matrix Software: For customers already taking advantage of virtualization and are ready to continue down the path to the cloud, the new CloudSystem Matrix software lets you build a cloud within a day, enabling you to create your service catalog. It provides a complete IaaS implementation for virtual environments with a service designer, a self-service portal for IT, and automated provisioning and capacity planning. This customer-installable software runs on any server supported by VMware and Microsoft Hyper-V, from HP or other vendors. A trial version is available for download.

More info on HP CloudSystem: www.hp.com/go/cloudsystem

More info on HP AppSystems: www.hp.com/go/appsystems

Brochure

Next Generation ProLiant

Introducing the world's most self-sufficient servers

The ISS poster guide provides an insight into the HP ProLiant server portfolio and essential HP solutions to help manage and grow your business.



Scan to find out more
<http://h18004.www1.hp.com/products/servers/platforms/>

© Copyright 2013 Hewlett-Packard Development Company, L.P. The information contained herein is subject to change without notice. The only warranties for HP products and services are set forth in the express warranty statements accompanying such products and services. Nothing herein should be construed as constituting an additional warranty. HP shall not be liable for technical or editorial errors or omissions contained herein. Celeron, Celeron Inside, Core Inside, Intel, Intel Atom, Intel Atom Inside, Intel Core, Intel Inside, Intel Inside Logo, Intel vPro, Titanium, Titanium Inside, Pentium, Pentium Inside, vPro Inside, Xeon, and Xeon Inside are trademarks of Intel Corporation in the U.S. and/or other countries. AMD, Athlon, Opteron and combinations thereof are trademarks or registered trademarks of Advanced Micro Devices, Inc. Microsoft, Windows, Windows Server, Hyper-V and SharePoint are trademarks of the Microsoft group of companies. Linux is a registered trademark of Linus

