

iN·Command<sup>®</sup>  
CONTROL SYSTEMS



///ADVENT<sup>®</sup>  
AIR

*Voyager*<sup>®</sup>



For over 40 years, ASA Electronics® has provided the RV industry with mobile electronics made to perform in any environment. Everything from televisions and stereos to observation systems has been designed to withstand extreme conditions, including vibration, temperature swings, and moisture.

Our product line comprises stereos, speakers, and televisions from JENSEN®, observation systems from Voyager®, and rooftop air conditioners from Advent® Air. Our line of marine products from JENSEN completes our premium product offering for those who live life on the edge. Engineered at our two-million-dollar, in-house testing facility, all of our products are backed by our Hassle-Free Warranty and Dealer Bill of Rights. They are warranted to be free of defects for 12 months, and our highly trained customer and technical service departments are available to answer any questions.

ASA Electronics® stands by its products every step of the way to ensure that they can handle any adventure.

# Contents.

---

## 04

### **iN-COMMAND® CONTROL SYSTEMS**

- TIRE PRESSURE MONITORING
- SMART RVING

## 07

### **VOYAGER**

- WIRED OBSERVATION SYSTEMS & COMPONENTS
- MONITORS & MOUNTS
- WIRELESS OBSERVATION COMPONENTS
- ALA CARTE OPTIONS

## 13

### **JENSEN**

- RV WALL MOUNT STEREOS/ACCESSORIES
- INTERIOR SPEAKERS
- SOUND BARS, SUBWOOFERS, & AMPLIFIERS
- AM/FM ANTENNAS
- 12V TELEVISIONS & ACCESSORIES
- 110V TELEVISIONS & ACCESSORIES
- MARINE STEREOS
- WATERPROOF EXTERIOR GRADE SPEAKERS

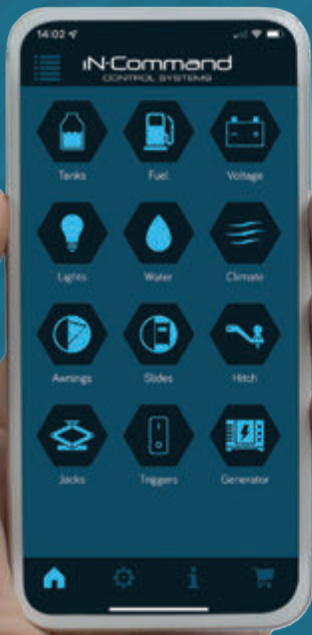
## 26

### **ADVENT AIR**

- ADVENT AC & ADVENT AC COMPONENTS

# iN·Command®

## CONTROL SYSTEMS



iN-Command® Control Systems ushers in the next generation of campsite control, acting as your RV's central hub of operations. Control and monitor an array of systems, including slides, awnings, tank levels, and even Climate control and scheduling. iN-Command Global Connect allows you to control select functions of your RV using your smart device from anywhere in the world. Features like our innovative Unified Wiring Diagram and changeable relays allow easy maintenance at the campsite or dealership to keep your trip moving. For more information about iN-Command Control Systems, please visit [www.in-command.net](http://www.in-command.net).



### GLOBAL CONNECT™

Control select functions of your RV from anywhere in the world using a smart device with Wi-Fi or cellular data connection.



### CLIMATE CONTROL™

Control your heart and air conditioning, including the ability to set schedules for day and night and control roof vents.



### GENERATOR

Control and monitor generator functions including auto-start and fault code reporting.



### TPMS

Monitor and receive notifications regarding air pressure and temperature in each tire, receiving alerts and other information through the iN-Command app.





NCTP100  
**FOUR TPMS SENSOR KIT**

Monitor the air pressure and temperature of up to 22 tires at once with the iN-Command® Tire Pressure Monitoring System. The waterproof sensors use Bluetooth® technology to communicate important safety information right to your smart device through the iN-Command TPMS app.



NCTP1002  
**TWO TPMS SENSOR KIT**

iN-COMMAND® TPMS CAN ALSO BE USED INDEPENDENTLY WITHOUT AN iN-COMMAND CONTROL SYSTEM

## SMART RVing

NCSP3DCCT  
COMPATIBLE WITH SELECT MODELS ONLY.



**SCAN HERE**

For more information  
& install instructions

### 7" TOUCHSCREEN

Upgrade your iN-Command system with Global Connect features and a 7" display commander.

NCSP60CM



NCSP60SP



NCSP60SYS2B



NCSP60SYS7



### iN-COMMAND KIT W/ TWO-BUTTON SWITCH PLATE

Join the smart RVing club with this easy-to-install iN-Command kit. This package allows you to upgrade your RV from a prep plate to a Bluetooth® operated system using your mobile device as the remote with a two-button switchplate and body control module.

### iN-COMMAND KIT W/ 7" TOUCHSCREEN

Experience complete control with this easy-to-install iN-Command kit. This package allows you to upgrade your RV from a prep plate to a complete system with a 7" touchscreen and body control module.

# *Voyager*<sup>®</sup>

You've never been safer with Voyager observation systems. With RVs prewired for WiSight<sup>®</sup> technology, our factory-installed, 12-volt DC socket is already connected to the existing wiring at the rear of the coach. WiSight<sup>®</sup> technology allows the camera to transmit to a wireless Voyager monitor even at high freeway speeds. Never guess your surroundings again.

- » EASY INSTALLATION
- » SAFETY
- » OBSERVATION

WIRELESS OBSERVATION SYSTEMS



WVSXP43

**VOYAGER WIRELESS WiSIGHT 2.0, 4.3" MONITOR W/ CAMERA FOR PREWIRE SYSTEM**

WVSXC150

SUPPORTS UP TO FOUR WIRELESS CAMERAS SIMULTANEOUSLY IN A QUAD VIEW DISPLAY FOR ULTIMATE VISIBILITY AND AWARENESS.

MODEL	PANEL SIZE	BRIGHTNESS	CONTRAST	CAMERA INPUTS	DIMENSIONS
WVSXM43	4.3"	500 NIT	500 TO 1	4	1.0" X 5.8" X 4.1"
WVSXM70	7"	400 NIT	500 TO 1	4	1.06" X 4.88" X 8.19"



WVSXM70

WVSXP70

**VOYAGER WIRELESS WiSIGHT 2.0, 7" MONITOR W/ CAMERA**

WVSXC150

MODEL	VIEWING ANGLES	WATER-RESISTANT	MICROPHONE	PLACEMENT	LED LOW-LIGHT ASSIST	IMAGE	SENSOR
WVSXC150	115°, 98°, 73°	IPX6	YES	REAR	YES	MIRROR	CMOS





WVSXS43

**VOYAGER WIRELESS WISIGHT 2.0, 4.3" MONITOR W/ CAMERA FOR PREWIRE SYSTEM**

WVSXC160



WVSXS70

**VOYAGER WIRELESS WISIGHT 2.0, 7" MONITOR W/ CAMERA**

WVSXC160

MODEL	VIEWING ANGLES	WATER-RESISTANT	MICROPHONE	PLACEMENT	LED LOW-LIGHT ASSIST	IMAGE	SENSOR
WVSXC160	122°, 91°, 65°	IPX6	YES	REAR	YES	MIRROR	CMOS

WIRELESS OBSERVATION SYSTEMS



WVSXM43

WVSXS43  
**VOYAGER WIRELESS WiSIGHT 2.0 4.3" MONITOR**



WVSXM70

WVSXS70  
**VOYAGER WIRELESS WiSIGHT 2.0 7" MONITOR**



WVSXC150

**VOYAGER WIRELESS WiSIGHT 2.0 CAMERA**



WVSXC160

**VOYAGER WIRELESS WiSIGHT 2.0 CAMERA**



WVH100PW

**VOYAGER PREP PLATE**

\*COMPATIBLE WITH WVSXC160

WIRED OBSERVATION SYSTEMS & COMPONENTS



VCMS17BR

CAMERA, VOYAGER LOW PROFILE, BLACK



VCMS24

CAMERA, VOYAGER CMOS, WHITE



VCAHD150

CAMERA, VOYAGER & FIXED MOUNT



VCAHD142RWT/VCAHD142LWT

CAMERA, SIDE-BODY, LEFT, WHITE/RIGHT



VCMS12LGPR/VCMS12RGPR

CAMERA, SIDE-BODY, LEFT, WHITE/RIGHT



WVOSAPANTEXT

ANTENNA EXTENSION FOR WVCM130AP WIRELESS CAMERA



CEC25

25' CAMERA CABLE

MODEL	VIEWING ANGLES	PLACEMENT	MICROPHONE	LED LOW-LIGHT ASSIST	WATER-RESISTANT	SENSOR
VCMS12L/VCMS12R	131°, 108°, 78°	SIDE BODY, LEFT OR RIGHT	NO	NO	IPX6	CMOS
VCAHD150	160°, 135°, 85°	REAR	YES	YES	IPX6	CMOS
VCMS24	154°, 123°, 95°	REAR	YES	YES	IPX6	CMOS
VCMS24B	154°, 123°, 95°	REAR	YES	YES	IPX6	CMOS
VCMS172B	125°, 84°, 67°	REAR	YES	YES	IPX6	CMOS
VCAHD142RWT	141°, 125°, 68°	SIDE BODY, RIGHT	NO	YES	IPX6	CMOS
VCAHD142LWT	141°, 125°, 68°	SIDE BODY, LEFT	NO	YES	IPX6	CMOS

## MONITORS & MOUNTS



VOSH4MNT

**4" UNIVERSAL PEDESTAL MOUNT**



VOSH6MNT

**6" UNIVERSAL PEDESTAL MOUNT**

MODEL	PANEL SIZE	BRIGHTNESS	CONTRAST	CAMERA INPUTS	DIMENSIONS
VOM719WP	7"	500 NIT	500 TO 1	4	1.2" X 5.3" X 7.8"
VOM718	7"	450 NIT	400 TO 1	3	7.56" X 5.06" X 1.10"
VOM73MMT	7"	400 NIT	500 TO 1	3	10.04" X 4.72" X 1.24"
VOM74MM	7"	400 NIT	500 TO 1	3	10.04" X 4.72" X 1.24"



VOM719WP

**7" HEAVY DUTY, QUADVIEW MONITOR**



VOM718

**7" LCD COLOR OBSERVATION MONITOR**



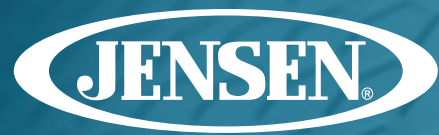
VOM73MMT

**7" MIRRORED MONITOR**



VOM74MM

**MONITOR, 7" MIRROR 3-CAM MULTI**



JENSEN wall mount stereos are designed to bring home entertainment to your home-away-from-home.



RV WALL MOUNT STEREOS/ACCESSORIES



**JWM30**  
**AM/FM/CD/DVD/USB/AUX/HDMI**  
**PASSTHROUGH/BLUETOOTH/3 ZONE/MULTI-**  
**SOURCE/DUAL BLUETOOTH ZONES**



**JWM41**  
**AM/FM/CD/DVD/USB/AUX/HDMI/BLUETOOTH/2 ZONE**



**JWM452**  
**AM/FM/CD/DVD/USB/AUX/HDMI/**  
**BLUETOOTH/REAR HDMI/2 ZONE**



**JWM62A**  
**AM/FM/CD/DVD/USB/BLUETOOTH/APP CONTROL/3 ZONE**



**JWM22**  
**AM/FM/USB/AUX/HDMI/**  
**BLUETOOTH/ CUBE-SHAPED/2 ZONE**



**JWM72A**  
**AM/FM/CD/DVD/USB/AUX/HDMI/**  
**BLUETOOTH/APP CONTROL/3 ZONE**



**JWM92A**  
**AM/FM/CD/DVD/USB/AUX/HDMI/BLUETOOTH/APP CONTROL/3 ZONE/ 160 WATTS**

MODEL	DIMENSIONS	MAX POWER	RMS POWER	SPEAKER ZONES	APP CONTROL	HDMI OUTPUTS	BLUETOOTH	REMOTE INCLUDED
JWM41	8.25" W X 4.4" H X 6" D	24 W	5W	2	NO	1	YES	YES
JWM72A	10.4" W X 3.75" H X 6.5" D	50 W	8W	3	YES	2	YES	YES
JWM92A	17" W X 3.75" H X 6.5" D	160 W	8W	3	YES	2	YES	YES
JWM452	8.25" W X 4.4" H X 6.5" D	7.62 W	5W	2	NO	1	YES	YES
JWM62A	10.43" W X 7" H X 5" D	50 W	5W	3	YES	1	YES	YES
JWM22	5.25" W X 4.6" H X 3.5" D	24 W	7W	2	NO	1	YES	YES
JWM30	8.23" W X 4.37" H X 6.52"	36 W	6W	3	NO	1	YES	YES

INTERIOR SPEAKERS



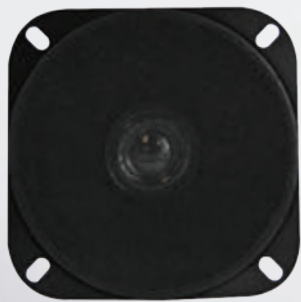
JXHD35  
3.5" HD SPEAKER, PAIR



JXHD40  
4" HD HIGH PERFORMANCE SPEAKER



JXHD54  
5.25" HD SPEAKER



1103050  
4" HEAVY DUTY SPEAKER



HDS3000  
5.25" HEAVY-DUTY DUAL CONE SURFACE MOUNT SPEAKERS, PAIR



HDS1000  
5.25" HEAVY-DUTY SPEAKERS, PAIR



JWMS437  
PANEL MOUNT SPEAKER \*SOLD INDIVIDUALLY

MODEL	SIZE	MAX POWER	RMS POWER	IMPEDANCE	SPEAKER TYPE, SPEAKER DESIGN
JXHD35	3.5"	30W	15W	4 Ω	WOOFER
JXHD40	4"	120W	40W	4 Ω	WOOFER
1103050*	4"	30W	15W	4 Ω	DUAL
JXHD54	5.25"	135W	45W	4 Ω	WOOFER
HDS3000	5.25"	40W	20W	4 Ω	DUAL
HDS1000	5.25"	30W	15W	4 Ω	WOOFER
JWMS350HP	3.5"	80W	20W	4 Ω	2-WAY
JWMS437	3"	12W	6W	4 Ω	2-WAY

## INTERIOR SPEAKERS



1022097

**4" BLACK SPEAKER GRILLE,  
(USE W/ 1103050)**



1102094

**5" DUAL CONE SPEAKERS BLACK**



1102094W

**5" DUAL CONE SPEAKERS WHITE**

MODEL	SIZE	MAX POWER	RMS POWER	IMPEDANCE	SPEAKER TYPE, SPEAKER DESIGN
1102094	5"	25W	20W	4 Ω	DUAL
1102094W	5"	25W	20W	4 Ω	DUAL
1103030*	5.25"	50W	25W	4 Ω	2-WAY COAXIAL
5203**	5.25"	30W	15W	4 Ω	WOOFER



1103030

**5.25" SPEAKERS  
(GRILLE SOLD SEPARATELY)**



GR600B / GR60W

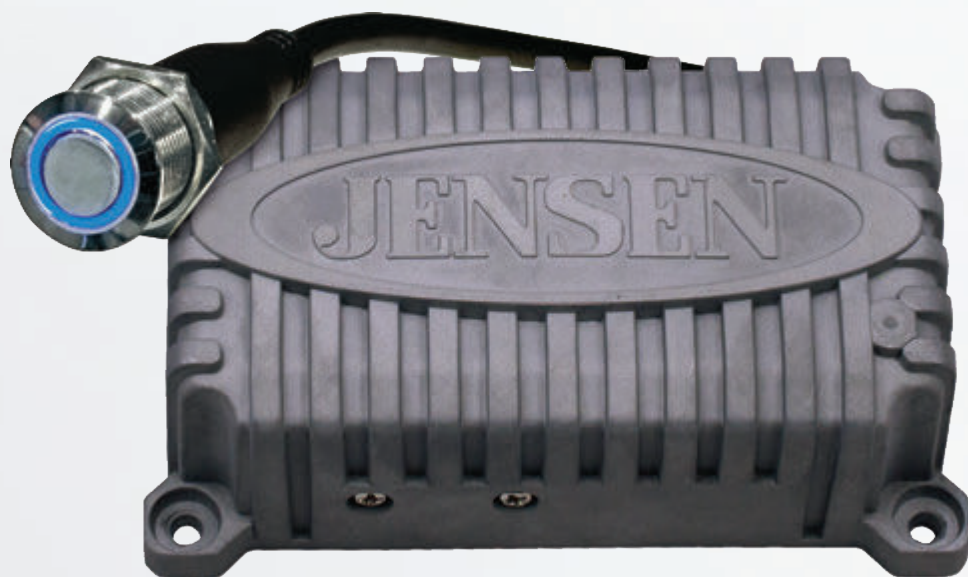
**6" BLACK / WHITE SPEAKER GRILLE**



5203

**5.25" SPEAKERS  
(GRILLE SOLD SEPARATELY)**





**JAH240BTR**

**AMPLIFIER, 2 CHANNEL - 80 WATTS**

Connect this 80-watt amplifier to speakers to stream music and control its playback and volume from any Bluetooth® enabled device. Waterproof and corrosion resistant.



**JMP5W800**

**200W MARINE AMPLIFIED SUBWOOFER - 8"**

200-watt, 8" amplified subwoofer. Can be mounted vertically or horizontally. Magnet measures 4"x6".

SOUND BARS, SUBWOOFERS, & AMPLIFIERS

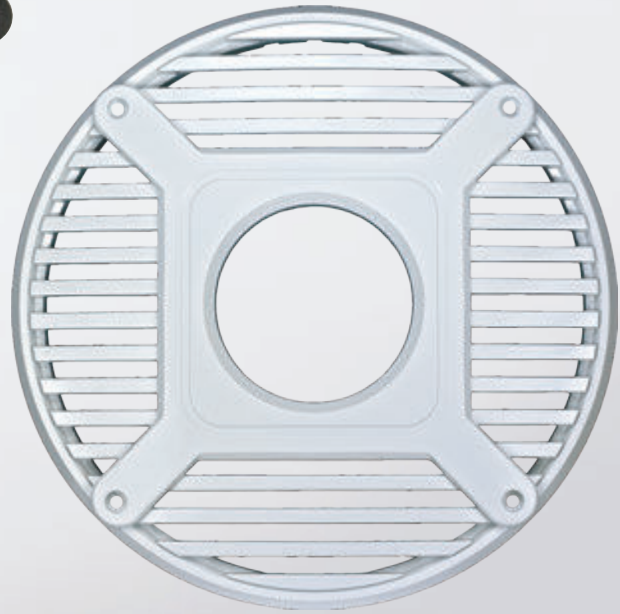


POWER760

**760W 4-CHANNEL  
AMPLIFIER**

RG10HW

**10" WHITE REMOVABLE SPORT  
GRILLE FOR MSW10S**



RG10SS

**10" SILVER REMOVABLE SPORT  
GRILLE FOR MSW10S MSW10S**

RG10SB

**10" BLACK REMOVABLE SPORT  
GRILLE FOR MSW10SWW**



AM/FM ANTENNAS



1181039

**14" SIDE OR TOP RUBBER MAST ANTENNA**



1181067

**TOP OR SIDE MOUNT FLEXIBLE ANTENNA**



44U501R

**RUBBER MAST TOP OR SIDE MOUNT ANTENNA**



8309819

**6' DI-POLE WIRE ANTENNA**



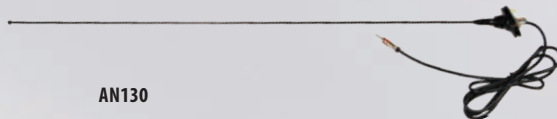
JAN139

**6" TOP OR SIDE RUBBER MAST ANTENNA**



AN140

**IN-WALL ANTENNA**



AN130

**FORD OVAL BASE ANTENNA**



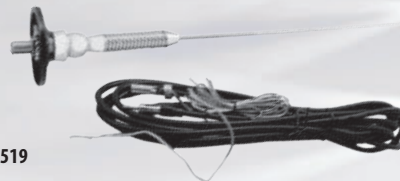
AN110

**TOP MOUNT PULL ANTENNA**



AN150SR

**AMPLIFIED ANTENNA, GREAT FOR REMOTE LOCATIONS**



AN519

**STAINLESS WHIP ANTENNA (HI-PERFORMANCE)**



AN3FM

**3" F-MOTOROLA COAXIAL CABLE**



ANT1B

**ANTENNA LEAD, 30"**

## 12V TELEVISIONS & ACCESSORIES

JENSEN® televisions are specially engineered for the RV lifestyle. Our 12-volt DC LED TVs are designed from the inside and out to be more durable than TVs from big box stores. Lightweight metal housings and reinforced circuit boards allow our TVs to withstand the vibrations of a moving vehicle while delivering a high-quality picture for years to come.



JTV1917DVDC

### 19" TV/DVD COMBO W/ STAND



JE3223

### 24" SMART DC TELEVISION



DCCIG09

### 12V DC POWER ADAPTER FOR LED TV'S



JCA12

### 12' STEREO AUDIO CABLE

MODEL	SCREEN SIZE	HDMI INPUTS	VIEWING ANGLES	CONTRAST RATIO	DIMENSIONS	VESA PATTERN
JTV1917DVDC**	19"	1	178/178	1000T01	17.5"W X 11"H X 1.8"D	75 X 75
JTV2423DCS	24"	2	178/178	3000T01	22.01"W X 13.55"H X 2.09"D	100 X 100
JTV3223DCS	32"	2	178/178	3000T01	28.8"W X 17.1"H X 3.2"D	100 X 100
JTV4023DCS	40"	2	178/178	5000T01	35.8"W X 20.4"H X 3.2"H	200 X 200
JVE3223	32"	2	178/178	3000T01	28.9"W X 17.1"H X 3.2"D	100 X 100
JE4023	40"	3	178/178	5000T01	35.8"W X 20.4"H X 3.2"D	200 X 200
JE5023	50"	3	178/178	3500T01	44.3"W X 25.8"H X 3.3" D	200 X 400

\*All LED TVs include an Optional 12V DC Power Adapter: DCCIG09

\*\*Includes built-in DVD player and TV stand



JE3223

**32" SMART DC TELEVISION**



JE3223

**40" SMART DC TELEVISION**



JE3223

**32" 110V WALL MOUNT TV**



JE4023

**40" 110V WALL MOUNT TV**



JE5023

**50" 110V WALL MOUNT TV**

## MARINE STEREO

JENSEN® Marine products are tested to survive harsh elements such as salt, fog, rain, extreme humidity, and rough water. Our marine products meet boat builders' high standards, making them ideal for your outdoor sound system.



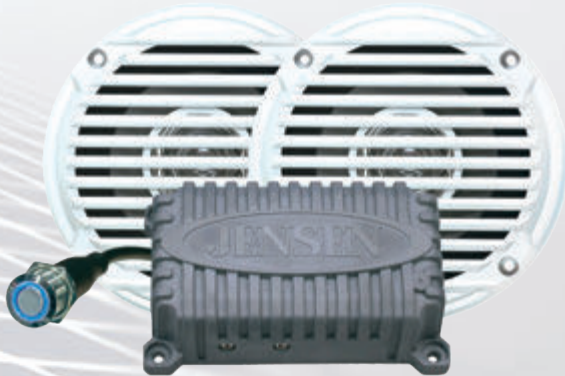
AMS602W

### 6" MARINE SPEAKER, WHITE



XMH100

### MARINE DIGITAL RECEIVER



CPM50

### 2-CHANNEL BLUETOOTH AMPLIFIER AND PAIR OF 5" WATERPROOF SPEAKERS



JMS35PKG

### 160 WATT, WATERPROOF, BLUETOOTH STEREO, TWO 6.5" DUAL CONES, 60-WATT SPEAKERS

MODEL	SIZE	MAX POWER	RMS POWER	IMPEDANCE	SPEAKER TYPE, SPEAKER DESIGN
AMS602W	6.5"	60W	30W	4 Ω	2-WAY
MS5006BR	5"	30W	12W	4 Ω	LOW PROFILE
MS5006WR	5.25"	30W	30W	4 Ω	LOW PROFILE
MS5250B	5.25"	36W	18W	4 Ω	COAXIAL
MS6007WR	6.5"	60W	30W	4 Ω	COAXIAL
MSX60BR	6.5"	75W	35W	4 Ω	2-WAY COAXIAL
MSX65R*	6.5"	75W	35W	4 Ω	2-WAY
MSX60RVR	6.5"	75W	30W	4 Ω	COAXIAL
MS6007SR	6.5"	60W	30W	4 Ω	COAXIAL

\*GRILLE SOLD SEPARATELY: RG65SS OR RG65HGS



JENAUX

**USB INTERFACE & 3.5MM AUX-IN JACK**



USBP124A

**1/8" AUXILIARY AUDIO INPUT JACK**



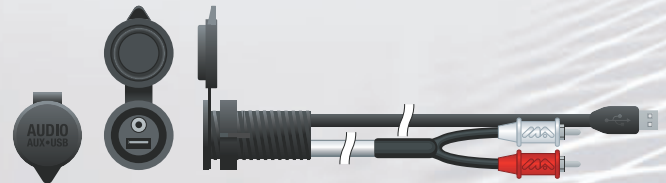
XMH300

**160 WATT, WATERPROOF STEREO W/ BLUETOOTH, AM/FM, USB W/ APP CONTROL**



MAAUXFR

**MAAUXF, RETAIL PACK**



MAAUXUSB

**MAAUXUSB, RETAIL PACK**



MWREXT

**6 METER CABLE EXT JENSEN**

WATERPROOF EXTERIOR GRADE SPEAKERS



MS5006BR

5" MARINE SPEAKERS BLACK, PAIR (1.5" TOTAL DEPTH)



MS5006WR

5" MARINE SPEAKERS WHITE, PAIR (1.5" TOTAL DEPTH)



MS5250B

5.25" MARINE SPEAKER, BLACK



MS6007BR

6.5" COAXIAL MARINE SPEAKERS BLACK, PAIR



MS6007SR

6.5" MARINE SPEAKERS, SILVER, PAIR



MS6007WR

6.5" COAXIAL MARINE SPEAKERS WHITE, PAIR



WATERPROOF EXTERIOR GRADE SPEAKERS



MSX60BR

**6.5" MARINE COAXIAL SPEAKERS, BLACK, PAIR**



RG65HGS

**6.5" SILVER SPEAKER GRILLE (USE W/ MS650 & MSX65), PAIR**



MSX60RVR

**6.5" MARINE SPEAKERS, GRAPHITE, PAIR**



RG65SS

**6.5" SILVER REMOVABLE SPORT GRILLE FOR MSX65, PAIR**



MSX65R

**6.5" MARINE HI-PERFORMANCE SPEAKERS, PAIR**

# ///ADVENT<sup>®</sup>AIR

Our ACs are designed for maximum airflow and efficiency while reducing compressor noise for a cool, quiet campout.





ACRG15

**DUCTED/NON-DUCTED CEILING ASSEMBLY  
W/ DIGITAL THERMOSTAT**



ACM135B / ACM135W

**13,500 BTU ROOF TOP AC, WHITE, BLACK**



ACM135LP

**13,500 BTU ROOF TOP LOW PROFILE AC, WHITE, BLACK**



ACM150LP

**15,000 BTU ROOF TOP LOW PROFILE AC, WHITE, BLACK**



ACM150B / ACM150W

**15,000 BTU ROOF TOP AC, WHITE, BLACK**



ACDB

**NON-DUCTED CEILING ASSEMBLY**

ADVENT AC & ADVENT AC COMPONENTS



ACMHD  
5,500 BTU HEAT STRIP



ACMSCKIT  
START CAPACITOR KIT



ACTF2  
AC/HP TEST KIT W/ HARNESS



ACTF  
TEST FIXTURE - FOR TROUBLESHOOTING COMPRESSOR  
AND FAN MOTOR (ADVENT & DOMETIC COMPATIBLE)



ADVENT2021  
ADVENT AIR CONDITIONER DISPLAY. DISPLAYS ADVENT  
AC'S ITEM NUMBERS: ACM135 / ACM150



ACCARKIT  
CARRIER ADAPTER KIT



ACCOLKIT  
COLEMAN ADAPTER KIT

# Capabilities.

---

We have worked hard to build a team with the skills necessary to handle every stage of production. Our diverse range of capabilities allows us to better serve the needs of our customers throughout the process, whether that means designing an entirely new product, customizing an existing product to fit their application, or simply answering questions in a timely manner.

## Engineering

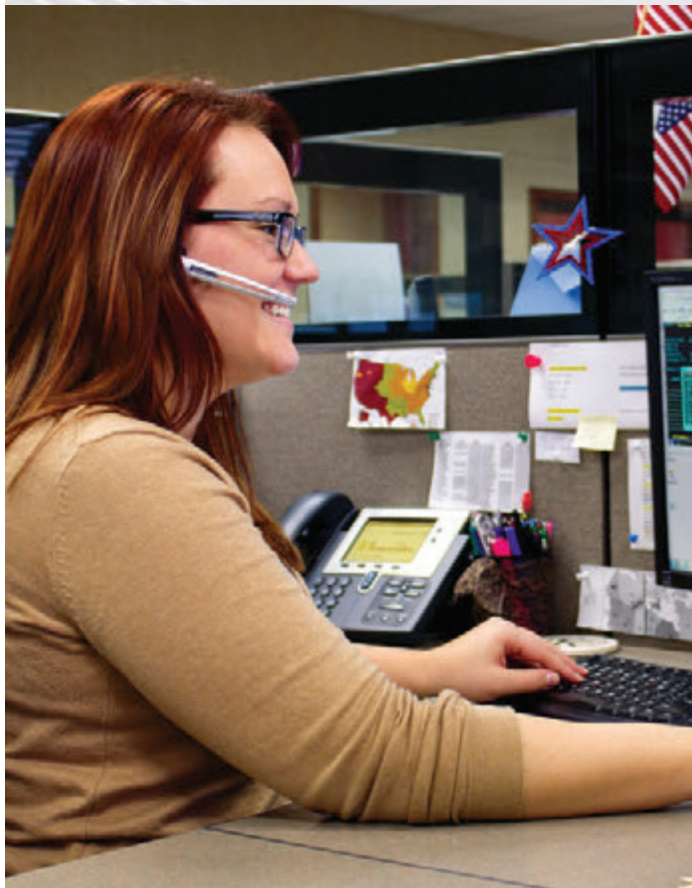
Our on-site engineering lab is equipped with a multi-million dollar testing facility where we test all our products to withstand the unique applications and environments where they will be used.





## Fabrication

Our highly-skilled fabrication team is able to modify existing products and even create new products to fulfill the needs of our customers on a regular basis.



## Customer Service

Our award-winning customer support team is highly knowledgeable about all our products – passionate about helping customers find quick solutions.

**ASA Electronics® is proud to offer our Hassle-Free Warranty  
and exclusive Dealer Bill of Rights to accompany our top-of-the-line products.**

**All JENSEN®, Voyager®, iN-Command® Control Systems, and Advent® Air products  
are backed by a unique no-hassle program that  
guarantees our products will be defect-free for 12 months.**

**FOLLOW ASA ELECTRONICS ON**



THE ONLY ELECTRONICS DESIGNED, ENGINEERED,  
& TESTED EXCLUSIVELY FOR MOBILE USE

**asa**  
ELECTRONICS®

2602 MARINE DRIVE • ELKHART INDIANA • 46514  
WWW.ASAELECTRONICS.COM

FOLLOW ASA ELECTRONICS ON



FEATURES AND SPECIFICATIONS ARE SUBJECT TO CHANGE WITHOUT NOTICE.