

Key Features

- Deployment flexibility with 800G (dual 400G), 400G, 100G, 50G, 40G, 25G, 10G or 1G modules.
- Hot swappable to maximize uptime and simplify serviceability
- Data rates from 1GbE to 25GbE supported using the SFP form factor, for the smallest, and lowest power solutions
- SFP+ Optical interoperability with 10GbE XFP, X2 and XENPAK pluggable form factors
- QSFP+ Universal transceiver for 40G operations over duplex multi-mode and single-mode fiber. Interoperable with IEEE 40GbE LR4 and LRL4 for easier migrations from 10G to 40G and to single mode fiber
- 100G QSFP pluggable transceivers and cables for high density 100G deployments. Optical interoperability with 100GbE CFP, CFP2 and CPAK
- Parallel QSFP transceivers for both multi-mode and single-mode enable flexible 4x25G and 4x10G options for gradual migration from 10G to 40G and 25G to 100G connectivity
- 100G SFP-DD and DSFP cables for cost effective NIC connectivity
- 200G QSFP optics, AOCs and cables for simple upgrade from 100G
- A Broad range of 400GE optics, AOCs and cables, in both OSFP and QSFP-DD form-factors
- 400G-ZR optics, with pluggable line-system for simple, cost effective DCI
- Flexibility of media and interface choice on a port-by-port basis
- Support for tunable 10Gigabit DWDM for DCI and long-haul optical fiber networks

Overview

Arista's Optical Modules and Cable portfolio offer a wide variety of high-density and low-power 800G (dual 400G), 400G, 100G, 50G, 40G, 25G, 10G, 1G, and 100M Ethernet connectivity options over fiber or copper.

To accommodate an increasing spectrum of applications, Arista offers a wide choice of OSFP, QSFP-DD, QSFP, SFP, SFP-DD and DSFP transceivers and cables that comply with industry standards, offering a broad range of connectivity options. Each module is optimized for different media and reach (ranging from 0.5 meters to 80 kilometers).

All interface speeds, from 1G to 400GE have connectivity options that include Direct Attach copper Cables (DACs), Active Optical Cables (AOCs), multi-mode fiber and single-mode fiber transceivers.

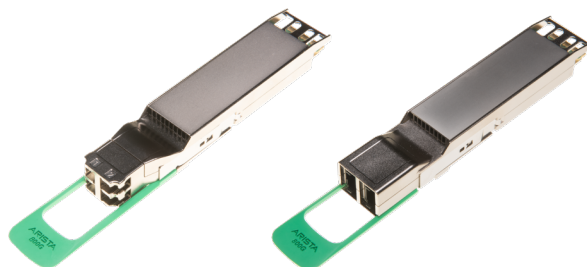


800G OSFP Options

PHY Type	Reach
800GBASE-CR8 / 2x 400GBASE-CR4	Twin-ax passive copper cables with link lengths of 1m - 2m.
800GBASE-AOC / 2x 400GBASE-AOC	Active Optical Cable with link lengths of 1m to 30m pre-terminated
2x 400GBASE-XDR4	Dual 400G optics, up to 2km over parallel single-mode fiber (optical interoperability with 4 x 100GBASE-FR up to 2km)
2x 400GBASE-PLR4	Dual 400G optics, up to 10km over parallel single-mode fiber (optical interoperability with 4 x 100GBASE-LR up to 10km)
2x 400GBASE-FR4	Dual 400G optics, up to 2km over single-mode fiber
2x 400GBASE-LR4	Dual 400G optics, up to 10km over single-mode fiber

800G QSFP-DD Options

PHY Type	Reach
800GBASE-CR8 / 2x 400GBASE-CR4	Twin-ax passive copper cables with link lengths of 1m - 2m.
800GBASE-AOC / 2x 400GBASE-AOC	Active Optical Cable with link lengths of 1m to 30m pre-terminated
2x 400GBASE-XDR4	Dual 400G optics, up to 2km over parallel single-mode fiber (optical interoperability with 4 x 100GBASE-FR up to 2km)
2x 400GBASE-PLR4	Dual 400G optics, up to 10km over parallel single-mode fiber (optical interoperability with 4 x 100GBASE-LR up to 10km)
2x 400GBASE-FR4	Dual 400G optics, up to 2km over single-mode fiber
2x 400GBASE-LR4	Dual 400G optics, up to 10km over single-mode fiber



800G (Dual 400G) OSFP and QSFP-DD Optics (OSFP models shown above)

400 Gigabit Ethernet OSFP and QSFP-DD Options

PHY Type	Reach
400GBASE-CR8	Twin-ax passive copper cables with link lengths from 1m-3m. Active copper breakout cables with link length up to 5m.
400GBASE-AOC	Active Optical Cable with link lengths of 1m to 30m pre-terminated
400GBASE-VSR4	Up to 50m over parallel multi-mode fiber
400GBASE-SR8 & SR8-C	Up to 100m over parallel OM4 multi-mode fiber
400GBASE-BIDI (400G-SR4.2) / 4x 100GBASE-BIDI / 4x 100GBASE-SR1.2 ¹	Up to 70m / 100m over parallel OM3 / OM4 MMF. Optical interoperability with 400G-SR4.2, 4x 100GBASE-BIDI (100G-SRBD) and 4x 100GBASE-SR1.2
400GBASE-DR4	Up to 500m over parallel single-mode fiber. Optical interoperability with 4 x 100GBASE-DR up to 500m
400GBASE-XDR4	Up to 2km over parallel single-mode fiber. Optical interoperability with 4 x 100GBASE-FR up to 2km
400GBASE-PLR4	Up to 10km over parallel single-mode fiber. Optical interoperability with 4 x 100GBASE-LR up to 10km
400GBASE-FR4	Up to 2km over single-mode fiber
400GBASE-LR4	Up to 10km over single-mode fiber
400GBASE-ZR ²	Up to 120km over single-mode fiber with optical amplification

Dual 200GBASE-FR4 OSFP

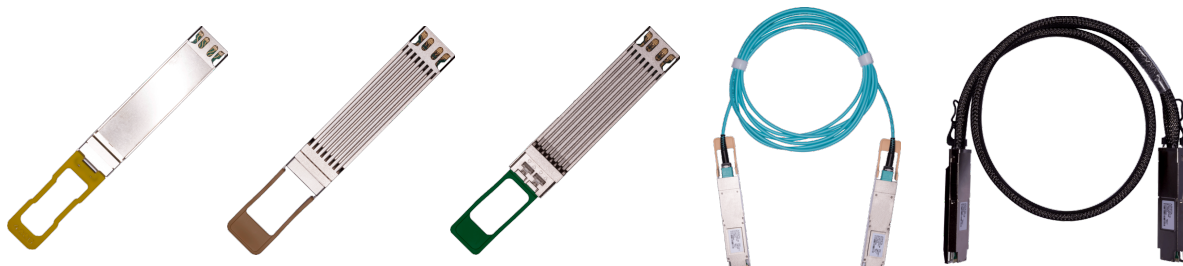
PHY Type	Reach
400GBASE-2FR4	Up to 2km over 2 pairs of single-mode fiber. Optical interoperability with 2 x 200GBASE-FR4 up to 2km

Dual 100GBASE-LR4 OSFP and QSFP-DD Options

PHY Type	Reach
200GBASE-2LR4	Up to 10km over 2 pairs of single-mode fiber (Optical interoperability with 2x 100GBASE-LR4)

8x25G-SR-E / 8x 10G-SR Enhanced Performance QSFP-DD Transceiver for Low Latency

PHY Type	Reach
8x 25GBASE-SR-E / 8x 10GBASE-SR	At 25G: Up to 30m / 50m over OM3 / OM4 parallel MMF without FEC (for low latency) or Up to 70m / 100m over OM3 / OM4 parallel MMF with FEC. At 10G: Up to 300m / 400m over OM3 / OM4 parallel MMF without FEC.



Broad portfolio of Arista 400G OSFP and QSFP-DD optics, AOCs and copper DACs

1. The 400GBASE-BIDI (OSFP-400G-SRBD & QDD-400G-SRBD) transceivers are software configurable for point to point 400GE links (400GBASE-SR4.2), breakout to 4x 100GBASE-BIDI (100G-SRBD) or breakout to 4x 100GBASE-SR1.2 links.
2. 400G-ZR modules supported on specific platforms. Refer to Arista’s Transceiver and Cable Guide for supported platforms.

200 Gigabit Ethernet QSFP Options

PHY Type	Reach
200GBASE-CR4	Twin-ax copper cables with link lengths of 1m, 2m, and 3m
200GBASE-AOC	Active Optical Cable with link lengths of 1m to 30m pre-terminated
200GBASE-SR4	200G/100G dual rate , up to 70m/100m over parallel OM3 / OM4 multi-mode fiber
200GBASE-FR4	Up to 2km over duplex single-mode fiber, 200G/100G dual rate

100 Gigabit Ethernet QSFP Options

PHY Type	Reach
100GBASE-CR4	Twin-ax copper cables with link lengths of 0.5m, 1m, 1.5m, 2m, 2.5m, 3m and 5m
100GBASE-AOC	Active Optical Cable with link lengths of 1m to 30m pre-terminated
100GBASE-SR4	Up to 70m over parallel OM3 multi-mode fiber or 100m over parallel OM4 multi-mode fiber
100GBASE-SR4-E	Up to 30m/50m over OM3/OM4 parallel MMF without FEC (for low latency) or 70m/100m over OM3/OM4 parallel MMF with FEC.
100GBASE-XSR4	Up to 150m over parallel OM3 multi-mode fiber or 300m over parallel OM4 multi-mode fiber
100GBASE-SWDM4	Up to 70m over duplex OM3 multi-mode fiber or 100m over duplex OM4 multi-mode fiber
100GBASE-BIDI	Up to 70m over duplex OM3 multi-mode fiber or 100m over duplex OM4 multi-mode fiber
100GBASE-PSM4	Up to 500m over parallel single-mode fiber, 100G/40G Dual rate
100GBASE-PLRL4	Up to 2km over parallel single-mode fiber, 100G/40G Dual rate
100GBASE-LR4	Up to 10km over single-mode fiber (optical interoperability with 100GBASE-LRL4 up to 2km)
100GBASE-LRL4	Up to 2km over single-mode fiber (optical interoperability with 100GBASE-LR4 up to 2km)
100GBASE-CWDM4	Up to 2km over single-mode fiber, 100G/40G Dual rate
100GBASE-XCWDM4	Up to 10km over single-mode fiber, 100G/40G Dual rate
100GBASE-ERL4	Up to 40km over single-mode fiber (optical interoperability with IEEE 100GBASE-ER4 up to 30km)
100GBASE-ZR4 ¹	Up to 80km over single-mode fiber
100GBASE-DR	Up to 500m over single-mode fiber (optical interoperability with 400GBASE-DR4 and XDR4 up to 500m)
100GBASE-FR	Up to 2km over single-mode fiber (optical interoperability with 400GBASE-XDR4 / DR4 up to 2km / 500m)
100GBASE-LR	Up to 10km over single-mode fiber (optical interoperability with 400GBASE-XDR4 / DR4 up to 2km / 500m)

40 Gigabit Ethernet QSFP+ Options

PHY Type	Reach
40GBASE-CR4	Twin-ax copper cables with link lengths of 0.5m, 1m, 2m, 3m and 5m
40GBASE-AOC	Active Optical Cable with link lengths of 3m to 100m pre-terminated
40GBASE-SR4	Up to 100m over parallel OM3 multi-mode fiber or 150m over parallel OM4 multi-mode fiber
40GBASE-XSR4	Up to 300m over parallel OM3 multi-mode fiber or 400m over parallel OM4 multi-mode fiber
40GBASE-BIDI	Up to 100m over duplex OM3 multi-mode fiber or 150m over duplex OM4 multi-mode fiber
40GBASE-UNIV	Up to 150m over duplex OM3/OM4 multi-mode fiber or 500m over duplex single-mode fiber
40GBASE-LR4	Up to 10km over duplex single-mode fiber (Optical interoperability with 40GBASE-LRL4 up to 1km)
40GBASE-LRL4	Up to 1km over duplex single-mode fiber (Optical interoperability with 40GBASE-LR4 up to 1km)
40GBASE-PLRL4	Up to 1km over parallel single-mode fiber (Optical interoperability with 4x10G LR/LRL up to 1km)
40GBASE-PLR4	Up to 10km over parallel single-mode fiber (Optical interoperability with 4x10G LR up to 10km and LRL up to 1km)
40GBASE-ER4	Up to 40km over duplex single-mode fiber

1. QSFP-100G-ZR4 supported on specific platforms. Refer to Arista's Transceiver and Cable Guide for supported platforms.

100G SFP-DD and DSFP Options

PHY Type	Reach
100GBASE-CR2	Twin-ax copper cables with link lengths of 1m, 2m, 3m.

50G SFP Options

PHY Type	Reach
50GBASE-CR	Twin-ax copper cables with link lengths of 1m, 2m, 3m. Can be used in 50G SFP and 100G SFP-DD / DSFP ports.

25 Gigabit Ethernet SFP Options

PHY Type	Reach
25GBASE-CR	Twin-ax copper cables with link lengths of 1m, 2m, 3m and 5m
25GBASE-AOC	Active Optical Cable with link lengths of 3m, 5m, 7m, 10m, 15m, 20m, 25m and 30m
25GBASE-SR	Up to 70m/100m over OM3/OM4 duplex multimode fiber
25GBASE-MR-SR	Dual rate (25G/10G), up to 70m/100m over OM3/OM4 MMF at 25G and 300m/400m over OM3/OM4 MMF at 10G. Interoperates with 10G-SR when operated at 10G.
25GBASE-MR-XSR ¹	Dual rate (25G/10G), extended reach, up to 200m/300m over OM3/OM4 MMF at 25G & 300m/400m over OM3/OM4 at 10G.
25GBASE-SR-E	Up to 30m/50m over duplex OM3/OM4 MMF without FEC (for low latency), or 70m/100m over OM3/OM4 MMF with FEC
25GBASE-LR	Up to 10km over duplex single-mode fiber
25GBASE-MR-LR ¹	Dual rate (25G/10G) up to 10km over duplex single-mode fiber
25GBASE-LR-E	Up to 2km over over duplex SMF without FEC (for low latency), or up to 10km over duplex SMF with FEC

10 Gigabit Ethernet SFP+ Options

PHY Type	Reach
10GBASE-T ²	Up to 30m link length over Category 6a copper cables
10GBASE-MRA-T ²	Up to 30m link length over Category 6a copper cables (rate adapting transceiver)
10GBASE-CR	Twin-ax copper cables with link lengths of 0.5m, 1m, 1.5m, 2m, 2.5m, 3m and 5m
10GBASE-AOC	Active Optical Cable with link lengths of 3m, 5m, 7m, 10m, 15m, 20m, 25m and 30m
10GBASE-SR	Up to 300m link length with 2000 MHz*km duplex MMF (OM3). Optical interoperability with 10GBASE-SRL
10GBASE-SRL	Up to 100m link length with 2000 MHz*km duplex MMF (OM3). Optical interoperability with 10GBASE-SR
10GBASE-LR	Up to 10km link length over duplex single-mode fiber. Optical interoperability with 10GBASE-LRL
10GBASE-LRL	Up to 1km link length over duplex single-mode fiber. Optical interoperability with 10GBASE-LR
10GBASE-ER	Up to 40km link length over duplex single-mode fiber
10GBASE-ERLBD	Up to 30km link length over a single strand of single-mode fiber
10GBASE-ERBD ³	Up to 40km link length over a single strand of single-mode fiber
10GBASE-ZR	Up to 80km link length over duplex single-mode fiber
10GBASE-DWDM ³	Up to 80km link length DWDM over duplex single-mode fiber

Gigabit Ethernet SFP Options

PHY Type	Reach
1000BASE-SX	Up to 550m link length with 500 MHz km MMF (OM2). Rate adapting option available (SFP-10G-RA-1G-SX) ²
1000BASE-LX	Up to 10km link length over duplex SMF and up to 550m on MMF ⁴ . Rate adapting option available (SFP-10G-RA-1G-LX) ²
1000BASE-T	Up to 100m link length over Category 5 copper cables, supporting both 100 Megabit and 1 Gigabit Ethernet

1. May require attenuation when connecting to 10G-LR / SR optics. Refer to the relevant 10G-LR / SR optical specifications for requirements.
2. Supported on specific platforms. Refer to Arista's Transceiver and Cable Guide for supported platforms.
3. Proper optical attenuation is required for shorter links to protect the receiver from permanent damage.
4. When 1000BASE-LX is used with FDDI grade OM1 or OM2 multi-mode fiber, a mode conditioning patch cord must be used at the transmitter to ensure specifications are met. Mode conditioning patch cord is not required for OM3 fiber.

Physical Characteristics (HxWxD)

- SFP: 8.55 x 13.7 x 56.5mm
- QSFP: 13.5 x 18.4 x 72.4mm
- QSFP-DD, Type 1: 13.5 x 18.4 x 78.3mm
- QSFP-DD, Type 2: 13.5 x 18.4 x 93.3mm
- OSFP: 13.0 x 22.6 x 100.4mm

Environmental Characteristics

- Operating case temperature: 0 to 70C
- Storage Temperature: -40 to 70C
- Relative Humidity: 5 to 95%
- Operating Altitude: 0-10,000 ft

Power Requirements (Maximum)

- SFP/SFP+ (except 10G ER, ZR, DWDM, BASE-T and 25G SR, XSR, LR): 1 W
- SFP-1G-T module: 1.5W
- 40G QSFP+ AOC, 40GBASE-SR4, XSR4; SFP+ ERLBD, ERBD, ER, ZR, DWDM and 25G SR, MR-SR MR-XSR, LR, MR-LR: 1.5 W
- SFP-10G-T, SFP-10G-RA-1G-SX, SFP-10G-RA-1G-LX: 2W
- SFP-10G-MRA-T module: 2.5W
- 40G QSFP+ AOC, BIDI, UNIV, LRL4, LR4, PLR4, PLRL4 and ER4: 3.5 W
- 100G QSFP AOC, SR4, XSR4, SWDM4, BIDI, PSM4, CWDM4, XCWDM4: 3.5W
- 100G QSFP LRL4: 4.0W
- 100G QSFP LR4, ERL4, DR, FR, LR: 4.5W
- 200G QSFP SR4: 4.5W
- 100G QSFP ZR4: 5.5W
- 200G QSFP FR4: 6.5W
- QDD-200G-2LR4 & OSFP-200G-2LR4 modules: 8W
- 400G OSFP & QSFP-DD AOC, VSR4, SR8, BIDI, DR4, XDR4, PLR4, FR4, LR4 2FR4: 12W
- 400G OSFP & QSFP-DD LR8: 14W
- 400G OSFP & QSFP-DD to 4x QSFP100 breakout Active Copper Cables: OSFP/ QSFP-DD: 10W, QSFP: 4W
- 800G OSFP & QSFP-DD AOC, 2XDR4, 2PLR4, 2FR4, 2LR4: 16W

IEEE Compliance

- 802.3 IEEE Ethernet

MSA & Standards Compliance

- GR-20-CORE
- GR-326-CORE
- GR-1435-CORE
- QSFP+/QSFP28: SFF-8449 and 8636
- SFP+: SFF-8431, 8461 and 8472
- 100G CWDM4 MSA
- 100G PSM4 MSA
- 100G SWDM4 Alliance
- 100G Lambda MSA
- OSFP MSA
- QSFP-DD MSA

- As per IEEE spec's, min cabling distance for -LR, -SR, -SX, -LX modules is 2m

Gigabit Ethernet SFP Specifications

PHY Type	Connector Type	Wave-length (nm)	Cable Type	Core Size (um)	Modal Bandwidth (MHz*Km)	Tx power (dBm)	Rx power (dBm)	Max Reach
1000BASE-SX	LC	850	MMF	62.5	160	-9.5 to -4.0	-17 to 0.0	220m
				62.5	200			275m
				50.0	400			500m
				50.0	500			550m
1000BASE-LX	LC	1310	MMF ¹	62.5	500	-9.5 to -3.0	-19 to -3.0	550m
				50.0	400			550m
			50.0	500	550m			
1000BASE-T	RJ-45	-	Cat5 (UTP)	-	-	-	-	100m

10 Gigabit Ethernet Cable Specifications

PHY Type	Connector Type	Wavelength (nm)	Cable Type	Max Reach
10GBASE-CR	SFP+ (Both ends)	-	Twinax Copper	0.5m to 5m
10GBASE-CR	QSFP+ to 4 x SFP+	-	Twinax Copper	0.5m to 5m
10GBASE-AOC	SFP+ (Both ends)	850nm	MMF	3m to 30m

10 Gigabit Ethernet SFP/SFP+ Specifications

PHY Type	Conn. Type	Wave-length (nm)	Cable Type	Core Size (um)	Modal Bandwidth (MHz*Km)	Tx power (dBm)	Rx power (dBm)	Max Reach
10GBASE-T	RJ-45	-	Cat6a	-	-	-	-	30m
10GBASE-MRA-T	RJ-45	-	Cat6a	-	-	-	-	30m
10GBASE-SR	LC	850	MMF	62.5	200	-7.3 to -1.0	-9.9 to -1.0	33m
				50.0	400			66m
				50.0	500			82m
				50.0	2000 (OM3)			300m
10GBASE-SRL	LC	850	MMF	62.5	200	-8.0 to -1.0	-9.9 to -1.0	11m
				50.0	400			22m
				50.0	500			27m
				50.0	2000 (OM3)			100m
10GBASE-SRL	LC	850	MMF	50.0	4700 (OM4)	-8.0 to -1.0	-9.9 to -1.0	150m
				50.0	4700 (OM4)			150m
10GBASE-LRL	LC	1310	SMF	G.652	-	-8.2 to 0.5	-12.5 to 0.5	1km
10GBASE-LR	LC	1310	SMF	G.652	-	-8.2 to 0.5	-14.4 to 0.5	10km
10GBASE-ERLBD-U/D	LC	1270 / 1330	SMF	G.652	-	0 to 5.0	0 to -15	30km
10GBASE-ERBD-U/D ²	LC	1270 / 1330	SMF	G.652	-	0 to 5.0	-9 to -21	40km ³
10GBASE-ER ²	LC	1550	SMF	G.652	-	-4.7 to 4.0	-15.0 to -1.0	40km ³
10GBASE-ZR ²	LC	1550	SMF	G.652	-	-1.0 to 4.0	-23.0 to -7.0	80km ³
10GBASE-DWDM ²	LC	1567.95 to 1529.94	SMF	G.652	-	-1.0 to 3.0	-23.0 to -7.0	80km ³

1. When 1000BASE-LX is used with OM1 or OM2 MMF a mode conditioning patch cable is required at the transmitter. This cable is not required for OM3 fiber.

2. Proper optical attenuation is required for shorter links to protect the receiver from permanent damage

3. Per IEEE 802.3ae - Links beyond 30 km over single-mode fiber are considered engineered links

25 Gigabit Ethernet SFP25 Cable Specifications



10GBASE-CR: QSFP+ to 4 x SFP+

PHY Type	Connector Type	Wavelength (nm)	Cable Type	Max Reach
25GBASE-CR	SFP (Both ends)	-	Twinax Copper	1m to 5m
25GBASE-CR	QSFP100 to 4 x SFP25	-	Twinax Copper	1m to 5m
25GBASE-AOC	SFP (Both ends)	850nm	MMF	3m to 30m

25 Gigabit Ethernet SFP25 Optical Specifications



SFP-25G-MR-LR



SFP-25G-MR-XSR

PHY Type	Conn Type	Wave-length (nm)	Cable Type	Core Size (um)	Modal Bandwidth (MHz*Km)	Tx power (dBm)	Rx power (dBm)	Max Reach
25GBASE-SR	LC	850	MMF	50.0	2000 (OM3) 4700 (OM4)	-8.4 to 2.4	-10.3 to 2.4	70m/100m
25GBASE-MR-SR						-8.4 to 2.4 @ 25G -7.3 to -0.5 @ 10G	-10.3 to 2.4 @ 25G -9.9 to 2.4 @ 10G	70m/100m @ 25G 300m/400m @ 10G
25GBASE-MR-XSR *						-6 to 2.4	-10.3 to 2.4	200m/300m @ 25G 300m/400m @ 10G
25GBASE-SR-E						-4.5 to 2.4	-5.9 to 2.4 w/o FEC, or -10.3 to 2.4 w FEC	30m / 50m w/o FEC, or 70m/100m w FEC
25GBASE-LR	LC	1310	SMF	G.652	-	-7 to 2.0	-13.3 to 2.0	10km
25GBASE-MR-LR *						-7 to 2.0	-13.3 to 2.0	10km
25GBASE-LR-E						-4 to 2.0	-7.2 to 2.0 w/o FEC, or -13.3 to 2.0 w FEC	2km w/o FEC, or 10km with FEC

* When connecting 25G-MR-XSR/LR optics to legacy fixed rate 10G optics, attenuation may be required to ensure the optical input power to the 10G optical module is within allowable limits. Refer to the relevant 10G-LR / SR optical specifications for requirements.

50G Gigabit Ethernet SFP50 Cable Specifications

PHY Type	Connector Type	Wavelength (nm)	Cable Type	Max Reach
50GBASE-CR	SFP (Both ends)	-	Twinax Copper	1m to 3m

100G Gigabit SFP-DD & DSFP Cable Specifications



100GBASE-CR2: SFP-DD to QSFP

PHY Type	Connector Type	Wavelength (nm)	Cable Type	Max Reach
100GBASE-CR2	SFP-DD to SFP-DD	-	Twinax Copper	1m to 3m
	SFP-DD to QSFP			
	DSFP to DSFP			
	DSFP to QSFP			
100GBASE-CR2 to 2x 50GBASE-CR	SFP-DD to 2x SFP	-	Twinax Copper	1m to 3m
	DSFP to 2x SFP			

40 Gigabit Ethernet QSFP+ Cable Specifications

PHY Type	Connector Type	Wavelength (nm)	Cable Type	Max Reach
40GBASE-CR4	QSFP+ to QSFP+	-	Twinax Copper	0.5m to 5m
10GBASE-CR	QSFP+ to 4 x SFP	-	Twinax Copper	0.5m to 5m
40GBASE-AOC	QSFP+ to QSFP+	850	MMF	3m to 100m



40GBASE-UNIV QSFP+

40 Gigabit Ethernet QSFP+ Optical Specifications

PHY Type	Connector Type	Wave-length (nm)	Cable Type	Core Size (um)	Modal Bandwidth (MHz*Km)	Tx power (dBm)	Rx power (dBm)	Max Reach
40GBASE-SR4	MPO-12 UPC	850	OM3 OM4	50.0 50.0	2000 (OM3) 4700 (OM4)	-7.6 to +2.4 /lane	-9.5 to +2.4 /lane	100m 150m
40GBASE-XSR4	MPO-12 UPC	850	OM3 OM4	50.0 50.0	2000 (OM3) 4700 (OM4)	-7.5 to +1 /lane	-9.9 to +2.4 /lane	300m 400m
40GBASE-BIDI	LC	850 900	OM3 OM4	50.0 50.0	2000 (OM3) 4700 (OM4)	-4 to +5 /lane	-6 to +5 /lane	100m 150m
40GBASE-UNIV	LC	1271 1291 1311 1331	OM3 OM4	50.0 50.0	2000 (OM3) 4700 (OM4)	-7 to +4.3 /lane	-10 to +4.3 /lane	150m 150m
			SMF	G.652	-	-10 to +2.3 /lane	-13.7 to +2.3 /lane	500m
40GBASE-LR4	LC	1271 1291 1311 1331	SMF	G.652	-	-7 to +2.3 /lane	-13.7 to +2.3 /lane	10km
40GBASE-LRL4	LC		SMF	G.652	-	-7 to +2.3 /lane	-11.5 to +2.3 /lane	1km
40GBASE-ER4*	LC	1271 1291 1311 1331	SMF	G.652	-	-2.7 to +3.8 /lane	-21.2 to -4.5 /lane	40km**
40GBASE-PLRL4	MPO-12 APC		1310	SMF	G.652	-	-8.2 to +0.5 /lane	-12.5 to +0.5 /lane
40GBASE-PLR4	MPO-12 APC	1310	SMF	G.652	-	-8.2 to +0.5 /lane	-14.4 to +0.5 /lane	10km



40GBASE-LR4 QSFP+



10GBASE-CR: QSFP+ to 4 x SFP+

* Proper optical attenuation is required for shorter links to protect the receiver from permanent damage

** Per IEEE 802.3 - Links beyond 30 km over single-mode fiber are considered engineered links

100 Gigabit Ethernet QSFP Cable Specifications

PHY Type	Connector Type	Wavelength (nm)	Cable Type	Max Reach
100GBASE-CR4	QSFP to QSFP	-	Twinax Copper	1, 2, 3, 5m
50GBASE-CR2	QSFP to 2x QSFP	-	Twinax Copper	1, 2, 3, 5m
25GBASE-CR	QSFP to 4 x SFP	-	Twinax Copper	1, 2, 3m
100GBASE-AOC	QSFP to QSFP	850	MMF	1m to 30m



40GBASE-AOC Cable

100 Gigabit Ethernet QSFP Optical Specifications



100GBASE-LR4 QSFP



100GBASE-PSM4 QSFP



100GBASE-CR4

PHY Type	Connector Type	Wave-length (nm)	Cable Type	Core Size (um)	Modal Bandwidth (MHz*Km)	Tx power (dBm)	Rx power (dBm)	Max Reach
100GBASE-SR4	MPO-12 UPC	850	OM3 OM4	50.0 50.0	2000 (OM3) 4700 (OM4)	-8.4 to +2.4 /lane	-10.3 to +2.4 /lane	70m 100m
100GBASE-SR4-E	MPO-12 UPC	850	OM3 OM4	50.0 50.0	2000 (OM3) 4700 (OM4)	-4.5 to 2.4	-5.9 to +2.4 w/o FEC, or -10.3 to +2.4 w FEC	30m/50m w/o FEC, or 70m/100m w FEC
100GBASE-XSR4	MPO-12 UPC	850	OM3 OM4	50.0 50.0	2000 (OM3) 4700 (OM4)	-8.3 to +2.4 /lane	-10.3 to +2.4 /lane	150m 300m
100GBASE-SWDM4	LC	850 880 910	OM3 OM4	50.0 50.0	2000 (OM3) 4700(OM4)	-7.5 to +3.4 /lane	-9.3 to +3.4 /lane	70m 100m
100GBASE-BIDI	LC	855 908	OM3 OM4	50.0 50.0	2000 (OM3) 4700 (OM4)	-6 to +4 /lane	-7.9 to +4 /lane	70m 100m
100GBASE-CWDM4	LC	1271 1291	SMF	G.652	-	-6.5 to +2.5 /lane	-11.5 to +2.5 /lane	2km
100GBASE-XCWDM4	LC	1311 1331	SMF	G.652	-	-6.5 to +2.5 /lane	-13 to +2.5 /lane	10km
100GBASE-PSM4	MPO-12 APC	1310	SMF	G.652	-	-9.4 to +2.0 /lane	-12.6 to +2.0 /lane	500m
100GBASE-PLRL4	MPO-12 APC	1310	SMF	G.652	-	-5.5 to +1.5 /lane	-12.6 to +2.0 /lane	2km
100GBASE-LR4	LC	1295.56 1300.05 1304.58 1309.14	SMF	G.652	-	-4.3 to +4.5 /lane	-10.6 to +4.5 /lane	10km
100GBASE-LRL4	LC		SMF	G.652	-	-6.0 to +4.5 /lane	-10.0 to +4.5 /lane	2km
100GBASE-ERL4*	LC		SMF	G.652	-	-2.9 to +4.5 /lane	-16.9 to -4.9 /lane	30km without FEC
							-20.9 to -4.9 /lane	40km with FEC
100GBASE-ZR4*	LC		SMF	G.652	-	+2.0 to +7.0 /lane	-5.0 to -28.0 /lane	80km
100GBASE-DR	LC	1310	SMF	G.652	-	-2.9 to +4.0 /lane	-5.9 to +4.0 /lane	500m
100GBASE-FR	LC	1310	SMF	G.652	-	-2.4 to +4.0 /lane	-6.4 to +4.5 /lane	2km
100GBASE-LR	LC	1310	SMF	G.652	-	-1.4 to +4.0 /lane	-7.7 to +4.5 /lane	10km

* Optical attenuation is required for shorter links to protect the receiver from permanent damage

200 Gigabit Ethernet QSFP Cable Specifications

PHY Type	Connector Type	Wavelength (nm)	Cable Type	Max Reach
200GBASE-CR4	QSFP to QSFP	-	Twinax Copper	1, 2, 3m
100GBASE-CR2	QSFP to 2x QSFP	-	Twinax Copper	1, 2, 3m
50GBASE-CR	QSFP to 4x SFP	-	Twinax Copper	1, 2, 3m

200 Gigabit Ethernet QSFP Optical Specifications

PHY Type	Connector Type	Wave-length (nm)	Cable Type	Core Size (um)	Modal Bandwidth (MHz*Km)	Tx power (dBm)	Rx power (dBm)	Max Reach
200GBASE-SR4	MPO-12 UPC	850	OM3 OM4	50.0 50.0	2000 (OM3) 4700 (OM4)	-6.5 to +4.0 /lane	-8.4 to +4.0 /lane	70m 100m
200GBASE-FR4	LC	850	SMF	G.652	-	-4.2 to 4.7 /lane	-8.2 to 4.7 /lane	2km



QSFP100 to 4x SFP+

8x 25 Gigabit Ethernet / 8x 10 Gigabit Ethernet QSFP-DD Optical Specifications

PHY Type	Connector Type	Wave-length (nm)	Cable Type	Core Size (um)	Modal Bandwidth (MHz*Km)	Tx power (dBm)	Rx power (dBm)	Max Reach
8x 25GBASE-SR-E /8x 10GBASE-SR	MPO-16 APC	850	OM3 OM4	50.0 50.0	2000 (OM3) 4700 (OM4)	-4.5 to 2.4 @ 25G, -6.8 to -0.5 @ 10G	-5.9 to 2.4 w/o FEC @25G, or -10.3 to 2.4 w FEC @25G, or -9.9 to -0.5 @10G	30m/50m w/o FEC @ 25G, or 70m/100m w FEC @ 25G, or 300m/400m @10G

400 Gigabit Ethernet Cable Specifications

PHY Type	Connector Type	Wavelength (nm)	Cable Type	Max Reach
400GBASE-CR8	OSFP to OSFP	–	Twinax Copper	1, 2, 3m
	QSFP-DD to QSFP-DD	–	Twinax Copper	1, 2, 2.5, 3m
400GBASE-CR8 to 2x 200GBASE-CR4	OSFP to 2x QSFP	–	Twinax Copper	1, 2, 3m
	QSFP-DD to 2x QSFP	–	Twinax Copper	1, 2, 2.5m
200GBASE-CR8 to 2x 100GBASE-CR4*	OSFP to 2x QSFP	–	Twinax Copper	1, 2, 3m
	QSFP-DD to 2x QSFP	–	Twinax Copper	1, 2, 2.5m
400GBASE-CR8 to 4x 100GBASE-CR2	OSFP to 4x QSFP	–	Twinax Copper	1, 2, 3m
	QSFP-DD to 4x QSFP	–	Twinax Copper	1, 2, 2.5m
400GBASE-CR8 to 4x 100GBASE-CR4	OSFP to 4x QSFP	–	Active Copper Cable	1, 2, 3, 5m
	QSFP-DD to 4x QSFP	–	Active Copper Cable	1, 2, 3, 5m
200GBASE-CR8 to 4x 50GBASE-CR2*	OSFP to 4x QSFP	–	Twinax Copper	1, 2, 3m
	QSFP-DD to 4x QSFP	–	Twinax Copper	1, 2, 2.5m
400GBASE-CR8 to 8x 50GBASE-CR	OSFP to 8x SFP	–	Twinax Copper	1, 2, 3m
	QSFP-DD to 8x SFP	–	Twinax Copper	1, 2, 2.5m
200GBASE-CR8 to 8x 25GBASE-CR*	OSFP to 8x SFP	–	Twinax Copper	1, 2, 3m
	QSFP-DD to 8x SFP	–	Twinax Copper	1, 2, 2.5m
400GBASE-AOC	OSFP to OSFP or QSFP-DD to QSFP-DD	850	MMF	1m to 30m



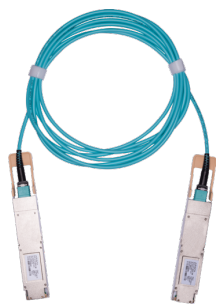
400GBASE-DR4 OSFP



400GBASE-SR8 OSFP



400GBASE-2FR4 OSFP



400GBASE-AOC OSFP



400GBASE-CR8 OSFP

400 Gigabit Ethernet Optical Specifications

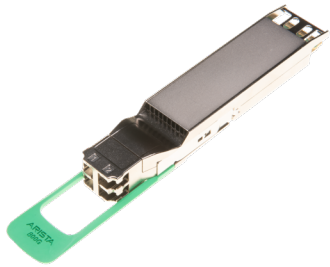
PHY Type	Connector Type	Wave-length (nm)	Cable Type	Core Size (um)	Modal Bandwidth (MHz*Km)	Tx power (dBm)	Rx power (dBm)	Max Reach
400GBASE-VSR4	MPO-12 APC	850	OM3 OM4	50.0 50.0	2000 (OM3) 4700 (OM4)	+4.0 to -4.6 /lane	+4.0 to -6.3 /lane	30m 50m
400GBASE-SR8 & SR8-C	MPO-16 APC	850	OM3 OM4	50.0 50.0	2000 (OM3) 4700 (OM4)	-6.5 to +4.0 /lane	-8.4 to +4.0 /lane	70m 100m
400GBASE-BIDI (400G-BASE SR4.2)	MPO-12 UPC	855 908	OM3 OM4	50.0 50.0	2000 (OM3) 4700 (OM4)	-6 to +4 /lane	-7.9 to +4 /lane	70m 100m
400GBASE-FR4	LC	1271, 1291 1311, 1331	SMF	G.652	–	-3.3 to +3.5 /lane	-7.3 to +3.5 /lane	2km
400GBASE-LR4	LC	1271, 1291 1311, 1331	SMF	G.652	–	-2.7 to +5.1 /lane	-9 to 5.1 /lane	10km
400GBASE-LR8	LC	1274, 1278, 1282, 1287, 1296, 1300, 1305, 1309	SMF	G.652	–	-2.8 to +5.3 /lane	-9.1 to +5.3 /lane	10km
400GBASE-2FR4	CS	1271, 1291 1311, 1331	SMF	G.652	–	-4.2 to 4.7 /lane	-8.2 to 4.7 /lane	2km
400GBASE-DR4	MPO-12 APC	1310	SMF	G.652	–	-2.9 to +4.0 /lane	-5.9 to +4.0 /lane	500m
400GBASE-XDR4	MPO-12 APC	1310	SMF	G.652	–	-2.4 to +4.0 /lane	-6.4 to +4.5 /lane	2km
400GBASE-PLR4	MPO-12 APC	1310	SMF	G.652	–	-1.4 to +4.0 /lane	-7.7 to +4.5 /lane	10km
400GBASE-ZR**	LC	1528.77 to 1566.52	SMF	G.652	–	>-10	-16 to 0	120km

* Requires the OSFP/QSFP-DD port to be configured for 200G using 8 x 25G NRZ electrical lanes. Allows interop with legacy 100G QSFP and 25G SFP ports.

** Refer to 400ZR DCI Solution Datasheet for more details

800G Cable Specifications

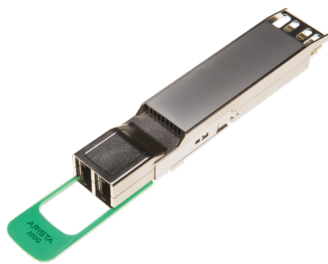
PHY Type	Connector Type	Wavelength (nm)	Cable Type	Max Reach
800GBASE-CR8 / 2x 400GBASE-CR8	OSFP to OSFP	-	Twinax Copper	1, 2m
	QSFP-DD to QSFP-DD	-	Twinax Copper	1, 2m
800GBASE-AOC / 2x 400GBASE-AOC	OSFP to OSFP	-	-	1m to 30m
	QSFP-DD to QSFP-DD			



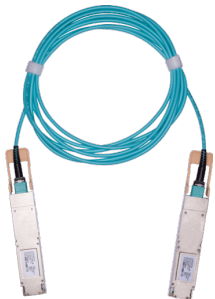
800GBASE-2FR4 OSFP

800G Optical Specifications

PHY Type	Connector Type	Wave-length (nm)	Cable Type	Core Size (um)	Modal Bandwidth (MHz*Km)	Tx power (dBm)	Rx power (dBm)	Max Reach
800GBASE-2FR4 (2x 400GBASE-FR4)	2x LC	1271, 1291 1311, 1331	SMF	G.652	-	-3.3 to +3.5 /lane	-7.3 to +3.5 / lane	2km
800GBASE-2LR4 2x 400GBASE-LR4	2x LC	1271, 1291 1311, 1331	SMF	G.652	-	-2.7 to +5.1 /lane	-9 to 5.1 /lane	10km
800GBASE-2XDR4 (2x 400GBASE-2XDR4)	2x MPO-12 APC	1310	SMF	G.652	-	-2.4 to +4.0 /lane	-6.4 to +4.5 /lane	2km
800GBASE-PLR4 (2x 400GBASE-2PLR4)	2x MPO-12 APC	1310	SMF	G.652	-	-1.4 to +4.0 /lane	-7.7 to +4.5 /lane	10km



800GBASE-2XDR4 OSFP



800GBASE-AOC OSFP



800GBASE-CR8 OSFP

Order Number	Product Description
--------------	---------------------

800G OSFP Twinax Copper Cables

C-O800-O800-1M	800GBASE-CR8 (2x 400GBASE-CR4) OSFP to OSFP Twinax Copper Cable 1 meter
----------------	---

C-O800-O800-2M	800GBASE-CR8 (2x 400GBASE-CR4) OSFP to OSFP Twinax Copper Cable 2 meter
----------------	---

800G OSFP Active Optical Cables

A-O800-O800-1M	800G OSFP to OSFP Active Optical Cable, 1m
----------------	--

A-O800-O800-3M	800G OSFP to OSFP Active Optical Cable, 3m
----------------	--

A-O800-O800-5M	800G OSFP to OSFP Active Optical Cable, 5m
----------------	--

A-O800-O800-7M	800G OSFP to OSFP Active Optical Cable, 7m
----------------	--

A-O800-O800-10M	800G OSFP to OSFP Active Optical Cable, 10m
-----------------	---

A-O800-O800-15M	800G OSFP to OSFP Active Optical Cable, 15m
-----------------	---

A-O800-O800-20M	800G OSFP to OSFP Active Optical Cable, 20m
-----------------	---

A-O800-O800-25M	800G OSFP to OSFP Active Optical Cable, 25m
-----------------	---

A-O800-O800-30M	800G OSFP to OSFP Active Optical Cable, 30m
-----------------	---

800G OSFP Optics

OSFP-800G-2XDR4	8x 100GBASE-FR (or 2x 400G-XDR4) OSFP Transceiver, 2x MPO-12 APC connectors, up to 2km over parallel SMF
-----------------	--

OSFP-800G-2PLR4	8x 100GBASE-LR (or 2x 400G-PLR4) OSFP Transceiver, 2x MPO-12 APC connectors up to 10km over parallel SMF
-----------------	--

OSFP-800G-2FR4	2x 400GBASE-FR4 OSFP Transceiver, 2x duplex LC connectors, up to 2km over duplex SMF
----------------	--

OSFP-800G-2LR4	2x 400GBASE-LR4 OSFP Transceiver, 2x duplex LC connectors, up to 10km over duplex SMF
----------------	---

Order Number	Product Description
800G QSFP-DD Twinax Copper Cables	
C-D800-D800-1M	800GBASE-CR8 QSFP-DD to QSFP-DD Twinax Copper Cable 1 meter
C-D800-D800-2M	800GBASE-CR8 QSFP-DD to QSFP-DD Twinax Copper Cable 2 meter
800G QSFP-DD Active Optical Cables	
A-D800-D800-1M	800G QSFP-DD to QSFP-DD Active Optical Cable, 1m
A-D800-D800-3M	800G QSFP-DD to QSFP-DD Active Optical Cable, 3m
A-D800-D800-5M	800G QSFP-DD to QSFP-DD Active Optical Cable, 5m
A-D800-D800-7M	800G QSFP-DD to QSFP-DD Active Optical Cable, 7m
A-D800-D800-10M	800G QSFP-DD to QSFP-DD Active Optical Cable, 10m
A-D800-D800-15M	800G QSFP-DD to QSFP-DD Active Optical Cable, 15m
A-D800-D800-20M	800G QSFP-DD to QSFP-DD Active Optical Cable, 20m
A-D800-D800-25M	800G QSFP-DD to QSFP-DD Active Optical Cable, 25m
A-D800-D800-30M	800G QSFP-DD to QSFP-DD Active Optical Cable, 30m
800G Ethernet QSFP-DD Optics	
QDD-800G-2XDR4	8x 100GBASE-FR (or 2x 400G-XDR4) QSFP-DD Transceiver, 2x MPO-12 APC connectors, up to 2km over parallel SMF
QDD-800G-2PLR4	8x 100GBASE-LR (or 2x 800G-PLR4) QSFP-DD Transceiver, 2x MPO-12 APC connectors, up to 10km over parallel SMF
QDD-800G-2FR4	2x 400GBASE-FR4 QSFP-DD Transceiver, 2x duplex LC connectors, up to 2km over duplex SMF
QDD-800G-2LR4	2x 400GBASE-LR4 QSFP-DD Transceiver, 2x duplex LC connectors, up to 10km over duplex SMF

Order Number	Product Description
400 Gigabit Ethernet OSFP Twinax Copper Cables	
CAB-O-O-400G-1M	400GBASE-CR8 OSFP to OSFP Twinax Copper Cable 1 meter
CAB-O-O-400G-2M	400GBASE-CR8 OSFP to OSFP Twinax Copper Cable 2 meter
CAB-O-O-400G-3M	400GBASE-CR8 OSFP to OSFP Twinax Copper Cable 3 meter
CAB-O-2Q-400G-1M	400GBASE-CR8 OSFP to 2 x 200GBASE-CR4 QSFP Twinax Copper Cable, 1 meter
CAB-O-2Q-400G-2M	400GBASE-CR8 OSFP to 2 x 200GBASE-CR4 QSFP Twinax Copper Cable, 2 meter
CAB-O-2Q-400G-3M	400GBASE-CR8 OSFP to 2 x 200GBASE-CR4 QSFP Twinax Copper Cable, 3 meter
CAB-O-2Q-200G-1M	200GBASE-CR8 OSFP to 2 x 100GBASE-CR4 QSFP Twinax Copper Cable, 1 meter
CAB-O-2Q-200G-2M	200GBASE-CR8 OSFP to 2 x 100GBASE-CR4 QSFP Twinax Copper Cable, 2 meter
CAB-O-2Q-200G-3M	200GBASE-CR8 OSFP to 2 x 100GBASE-CR4 QSFP Twinax Copper Cable, 3 meter
CAB-O-4Q-400G-1M	400GBASE-CR8 OSFP to 4 x 100GBASE-CR2 QSFP Twinax Copper Cable, 1 meter
CAB-O-4Q-400G-2M	400GBASE-CR8 OSFP to 4 x 100GBASE-CR2 QSFP Twinax Copper Cable, 2 meter
CAB-O-4Q-400G-3M	400GBASE-CR8 OSFP to 4 x 100GBASE-CR2 QSFP Twinax Copper Cable, 3 meter
CAB-O-4Q-200G-1M	200GBASE-CR8 OSFP to 4 x 50GBASE-CR2 QSFP Twinax Copper Cable, 1 meter
CAB-O-4Q-200G-2M	200GBASE-CR8 OSFP to 4 x 50GBASE-CR2 QSFP Twinax Copper Cable, 2 meter
CAB-O-4Q-200G-3M	200GBASE-CR8 OSFP to 4 x 50GBASE-CR2 QSFP Twinax Copper Cable, 3 meter
CAB-O-8S-400G-1M	400GBASE-CR8 OSFP to 8 x 50GBASE-CR SFP Twinax Copper Cable, 1 meter
CAB-O-8S-400G-2M	400GBASE-CR8 OSFP to 8 x 50GBASE-CR SFP Twinax Copper Cable, 2 meter
CAB-O-8S-400G-3M	400GBASE-CR8 OSFP to 8 x 50GBASE-CR SFP Twinax Copper Cable, 3 meter
CAB-O-8S-200G-1M	200GBASE-CR8 OSFP to 8 x 25GBASE-CR SFP Twinax Copper Cable, 1 meter
CAB-O-8S-200G-2M	200GBASE-CR8 OSFP to 8 x 25GBASE-CR SFP Twinax Copper Cable, 2 meter
CAB-O-8S-200G-3M	200GBASE-CR8 OSFP to 8 x 25GBASE-CR SFP Twinax Copper Cable, 3 meter
400 Gigabit Ethernet OSFP Twinax Active Copper Cables*	
H-O400-4Q100-1M	400GBASE-CR8 OSFP to 4 x 100GBASE-CR4 QSFP Twinax Active Copper Cable, 1 meter
H-O400-4Q100-2M	400GBASE-CR8 OSFP to 4 x 100GBASE-CR4 QSFP Twinax Active Copper Cable, 2 meter
H-O400-4Q100-3M	400GBASE-CR8 OSFP to 4 x 100GBASE-CR4 QSFP Twinax Active Copper Cable, 3 meter
H-O400-4Q100-5M	400GBASE-CR8 OSFP to 4 x 100GBASE-CR4 QSFP Twinax Active Copper Cable, 5 meter

* The Arista 400G OSFP to 4x QSFP100 active copper cables allow a 400G OSFP port (with 8x 50G PAM-4 electrical lanes) to connect to 4x QSFP100 ports (with 4x 25G NRZ electrical lanes per QSFP). A gearbox inside the QSFP end of the cable implements the 2x 50G PAM-4 to 4x 25G NRZ conversion.

Order Number	Product Description
400 Gigabit Ethernet OSFP Active Optical Cables	
AOC-O-O-400G-1M	400GbE OSFP to OSFP Active Optical Cable, 1m
AOC-O-O-400G-3M	400GbE OSFP to OSFP Active Optical Cable, 3m
AOC-O-O-400G-5M	400GbE OSFP to OSFP Active Optical Cable, 5m
AOC-O-O-400G-7M	400GbE OSFP to OSFP Active Optical Cable, 7m
AOC-O-O-400G-10M	400GbE OSFP to OSFP Active Optical Cable, 10m
AOC-O-O-400G-15M	400GbE OSFP to OSFP Active Optical Cable, 15m
AOC-O-O-400G-20M	400GbE OSFP to OSFP Active Optical Cable, 20m
AOC-O-O-400G-25M	400GbE OSFP to OSFP Active Optical Cable, 25m
AOC-O-O-400G-30M	400GbE OSFP to OSFP Active Optical Cable, 30m
400 Gigabit Ethernet OSFP Optics	
OSFP-400G-VSR4	400GBASE-VSR4 OSFP Transceiver, MPO-12 APC connector, up to 50m over parallel OM4 MMF.
OSFP-400G-SR8	400GBASE-SR8 OSFP Transceiver, MPO-16 APC connector, up to 100m over parallel OM4 MMF.
OSFP-400G-SR8-C	400GBASE-SR8 and 8x 50G / 25G-SR OSFP Transceiver, MPO-16 APC connector , 100m over parallel OM4 MMF
OSFP-400G-SRBD ¹	400GBASE-BIDI (400GBASE-SR4.2) , 4x 100GBASE-BIDI and 4x 100GBASE-SR1.2 OSFP Transceiver, MPO-12 UPC connector, 70m / 100m over parallel OM3 / OM4 MMF.
OSFP-400G-DR4	400GBASE-DR4 OSFP Transceiver, MPO12 APC connector, up to 500m over parallel SMF
OSFP-400G-XDR4	4x 100GBASE-FR (or 400G-XDR4) OSFP Transceiver, MPO12 APC connector, up to 2km over parallel SMF
OSFP-400G-XDR4-S	4x 100GBASE-FR (or 400G-XDR4) OSFP Transceiver, with SN optical connectors, up to 2km over parallel SMF
OSFP-400G-PLR4	4x 100GBASE-LR (or 400G-PLR4) OSFP Transceiver, MPO12 APC connector, up to 10km over parallel SMF
OSFP-400G-PLR4-S	4x 100GBASE-LR (or 400G-PLR4) OSFP Transceiver, with SN optical connectors, up to 10km over parallel SMF
OSFP-400G-FR4	400GBASE-FR4 OSFP Transceiver, up to 2km over duplex SMF
OSFP-400G-LR4	400GBASE-LR4 OSFP Transceiver, up to 10km over duplex SMF
OSFP-400G-LR8	400GBASE-LR8 OSFP Transceiver, up to 10km over duplex SMF
OSFP-400G-2FR4	400GBASE-2FR4 (2x 200G-FR4) OSFP Transceiver, up to 2km over 2 pairs of duplex SMF
OSFP-400G-ZR ²	400GBASE-ZR OSFP Digital Coherent Tunable Transceiver, up to 120km over duplex SMF with amplification
Dual 100 Gigabit Ethernet OSFP Optics	
OSFP-200G-2LR4 ³	2 x 100GBASE-LR4 OSFP Transceiver, with 2x LC optical connectors, up to 10km over two pairs of duplex SMF

1. The OSFP-400G-SRBD is software configurable for point to point 400GE links (400GBASE-SR4.2), breakout to 4x 100GBASE-BIDI (100G-SRBD) or breakout to 4x 100GBASE-SR1.2 optics.

2. OSFP-400G-ZR supported on specific platforms. Refer to Arista's Transceiver and Cable Guide for supported platforms.

3. Requires the OSFP port to be configured as 2x 100G

Order Number	Product Description
400 Gigabit Ethernet QSFP-DD Twinax Copper cables	
CAB-D-D-400G-1M	400GBASE-CR8 QSFP-DD to QSFP-DD Twinax Copper Cable 1 meter
CAB-D-D-400G-2M	400GBASE-CR8 QSFP-DD to QSFP-DD Twinax Copper Cable 2 meter
CAB-D-D-400-2.5	400GBASE-CR8 QSFP-DD to QSFP-DD Twinax Copper Cable 2.5 meter
CAB-D-D-400G-3M	400GBASE-CR8 QSFP-DD to QSFP-DD Twinax Copper Cable 3 meter
CAB-D-2Q-400G-1M	400GBASE-CR8 QSFP-DD to 2 x 200GBASE-CR4 QSFP Twinax Copper Cable, 1 meter
CAB-D-2Q-400G-2M	400GBASE-CR8 QSFP-DD to 2 x 200GBASE-CR4 QSFP Twinax Copper Cable, 2 meter
CAB-D-2Q-400-2.5	400GBASE-CR8 QSFP-DD to 2 x 200GBASE-CR4 QSFP Twinax Copper Cable, 2.5 meter
CAB-D-2Q-400G-3M	400GBASE-CR8 QSFP-DD to 2 x 200GBASE-CR4 QSFP Twinax Copper Cable, 3 meter
CAB-D-2Q-200G-1M	200GBASE-CR8 QSFP-DD to 2 x 100GBASE-CR4 QSFP Twinax Copper Cable, 1 meter
CAB-D-2Q-200G-2M	200GBASE-CR8 QSFP-DD to 2 x 100GBASE-CR4 QSFP Twinax Copper Cable, 2 meter
CAB-D-2Q-200-2.5	200GBASE-CR8 QSFP-DD to 2 x 100GBASE-CR4 QSFP Twinax Copper Cable, 2.5 meter
CAB-D-4Q-400G-1M	400GBASE-CR8 QSFP-DD to 4 x 100GBASE-CR2 QSFP Twinax Copper Cable, 1 meter
CAB-D-4Q-400G-2M	400GBASE-CR8 QSFP-DD to 4 x 100GBASE-CR2 QSFP Twinax Copper Cable, 2 meter
CAB-D-4Q-400-2.5	400GBASE-CR8 QSFP-DD to 4 x 100GBASE-CR2 QSFP Twinax Copper Cable, 2.5 meter
CAB-D-4Q-400G-3M	400GBASE-CR8 QSFP-DD to 4 x 100GBASE-CR2 QSFP Twinax Copper Cable, 3 meter
CAB-D-4Q-200G-1M	200GBASE-CR8 QSFP-DD to 4 x 50GBASE-CR2 QSFP Twinax Copper Cable, 1 meter
CAB-D-4Q-200G-2M	200GBASE-CR8 QSFP-DD to 4 x 50GBASE-CR2 QSFP Twinax Copper Cable, 2 meter
CAB-D-4Q-200-2.5	200GBASE-CR8 QSFP-DD to 4 x 50GBASE-CR2 QSFP Twinax Copper Cable, 2.5 meter
CAB-D-8S-400G-1M	400GBASE-CR8 QSFP-DD to 8 x 50GBASE-CR SFP Twinax Copper Cable, 1 meter
CAB-D-8S-400G-2M	400GBASE-CR8 QSFP-DD to 8 x 50GBASE-CR SFP Twinax Copper Cable, 2 meter
CAB-D-8S-400-2.5	400GBASE-CR8 QSFP-DD to 8 x 50GBASE-CR SFP Twinax Copper Cable, 2.5 meter
CAB-D-8S-200G-1M	200GBASE-CR8 QSFP-DD to 8 x 25GBASE-CR SFP Twinax Copper Cable, 1 meter
CAB-D-8S-200G-2M	200GBASE-CR8 QSFP-DD to 8 x 25GBASE-CR SFP Twinax Copper Cable, 2 meter
CAB-D-8S-200-2.5	200GBASE-CR8 QSFP-DD to 8 x 25GBASE-CR SFP Twinax Copper Cable, 2.5 meter
400 Gigabit Ethernet QSFP-DD Twinax Active Copper Cables*	
H-D400-4Q100-1M	400GBASE-CR8 QSFP-DD to 4 x 100GBASE-CR4 QSFP Twinax Active Copper Cable, 1 meter
H-D400-4Q100-2M	400GBASE-CR8 QSFP-DD to 4 x 100GBASE-CR4 QSFP Twinax Active Copper Cable, 2 meter
H-D400-4Q100-3M	400GBASE-CR8 QSFP-DD to 4 x 100GBASE-CR4 QSFP Twinax Active Copper Cable, 3 meter
H-D400-4Q100-5M	400GBASE-CR8 QSFP-DD to 4 x 100GBASE-CR4 QSFP Twinax Active Copper Cable, 5 meter

* The Arista 400G QSFP-DD to 4x QSFP100 active copper cables allow a 400G OSFP port (with 8x 50G PAM-4 electrical lanes) to connect to 4x QSFP100 ports (with 4x 25G NRZ electrical lanes per QSFP). A gearbox inside the QSFP end of the cable implements the 2x 50G PAM-4 to 4x 25G NRZ conversion.

Order Number	Product Description
400 Gigabit Ethernet QSFP-DD Active Optical Cables	
AOC-D-D-400G-1M	400GbE QSFP-DD to QSFP-DD Active Optical Cable, 1m
AOC-D-D-400G-3M	400GbE QSFP-DD to QSFP-DD Active Optical Cable, 3m
AOC-D-D-400G-5M	400GbE QSFP-DD to QSFP-DD Active Optical Cable, 5m
AOC-D-D-400G-7M	400GbE QSFP-DD to QSFP-DD Active Optical Cable, 7m
AOC-D-D-400G-10M	400GbE QSFP-DD to QSFP-DD Active Optical Cable, 10m
AOC-D-D-400G-15M	400GbE QSFP-DD to QSFP-DD Active Optical Cable, 15m
AOC-D-D-400G-20M	400GbE QSFP-DD to QSFP-DD Active Optical Cable, 20m
AOC-D-D-400G-25M	400GbE QSFP-DD to QSFP-DD Active Optical Cable, 25m
AOC-D-D-400G-30M	400GbE QSFP-DD to QSFP-DD Active Optical Cable, 30m
400 Gigabit Ethernet QSFP-DD Optics	
QDD-400G-VSR4	400GBASE-VSR4 QSFP-DD Transceiver, MPO-12 APC connector, up to 50m over parallel OM4 MMF.
QDD-400G-SR8	400GBASE-SR8 QSFP-DD Transceiver, MPO-16 APC connector, up to 100m over parallel OM4 MMF.
QDD-400G-SR8-C	400GBASE-SR8 and 8x 50G-SR / 25G-SR QSFP-DD transceiver, MPO-16 APC connector, up to 100m over parallel OM4 MMF
QDD-400G-SRBD ¹	400GBASE-SR4.2 (400G-BIDI), 4x 100GBASE-BIDI (100G-SRBD) and 4x 100GBASE-SR1.2 QSFP-DD Transceiver, MPO-12 UPC connector, 70m / 100m over parallel OM3 / OM4 MMF.
QDD-400G-DR4	400GBASE-DR4 QSFP-DD Transceiver, MPO12 APC connector, up to 500m over parallel SMF
QDD-400G-XDR4	4x 100GBASE-FR (or400G-XDR4) QSFP-DD Transceiver, MPO12 APC connector, up to 2km over parallel SMF
QDD-400G-XDR4-S	4x 100GBASE-FR (or400G-XDR4) QSFP-DD Transceiver, with SN optical connectors, up to 2km over parallel SMF
QDD-400G-PLR4	4x 100GBASE-LR (or 400G-PLR4) QSFP-DD Transceiver, MPO12 APC connector, up to 10km over parallel SMF
QDD-400G-PLR4-S	4x 100GBASE-LR (or 400G-PLR4) QSFP-DD Transceiver, with SN optical connectors, up to 10km over parallel SMF
QDD-400G-FR4	400GBASE-FR4 QSFP-DD Transceiver, up to 2km over duplex SMF
QDD-400G-LR4	400GBASE-LR4 QSFP-DD Transceiver, up to 10km over duplex SMF
QDD-400G-LR8	400GBASE-LR8 QSFP-DD Transceiver, up to 10km over duplex SMF
QDD-400G-ZR ²	400GBASE-ZR QSFP-DD Digital Coherent Tunable Transceiver, up to 120km over duplex SMF with amplification
Dual 100 Gigabit Ethernet QSFP-DD Optics	
QDD-200G-2LR4 ³	2 x 100GBASE-LR4 QSFP-DD Transceiver, with 2x CS optical connectors, up to 10km over two pairs of duplex SMF
8x 25 Gigabit Ethernet / 8x 10 Gigabit Ethernet QSFP-DD Optics with Enhanced Optical Performance for Low Latency	
QDD-8X25-MR-SR-E	8x 25GBASE-SR-Enhanced / 8x 10GBASE-SR QSFP-DD E-Series Transceiver for low latency, MPO-16 APC optical connector, Up to 30m / 50m over parallel MMF without FEC @ 25G (for low latency), Up to 70m / 100m over parallel MMF with FEC @ 25G, or Up to 300m / 400m Over parallel MMF at 10G

1. The QDD-400G-SRBD is software configurable for point to point 400GE links (400GBASE-SR4.2), breakout to 4x 100GBASE-BIDI (100G-SRBD) or breakout to 4x 100GBASE-SR1.2 optics.

2. QDD-400G-ZR supported on specific platforms. Refer to Arista's Transceiver and Cable Guide for supported platforms.

3. Requires the QSFP-DD port to be configured as 2x 100G

Order Number	Product Description
200 Gigabit Ethernet QSFP Twinax Copper cables	
C-Q200-Q200-1M	200GBASE-CR4 QSFP to QSFP Twinax Copper Cable 1 meter
C-Q200-Q200-2M	200GBASE-CR4 QSFP to QSFP Twinax Copper Cable 2 meter
C-Q200-Q200-3M	200GBASE-CR4 QSFP to QSFP Twinax Copper Cable 3 meter
C-Q200-2Q100-1M	200GBASE-CR4 QSFP to 2 x 100GBASE-CR2 QSFP Twinax Copper Cable, 1M
C-Q200-2Q100-2M	200GBASE-CR4 QSFP to 2 x 100GBASE-CR2 QSFP Twinax Copper Cable, 2M
C-Q200-2Q100-3M	200GBASE-CR4 QSFP to 2 x 100GBASE-CR2 QSFP Twinax Copper Cable, 3M
C-Q200-4S50-1M	200GBASE-CR4 QSFP to 4 x 50GBASE-CR SFP Twinax Copper Cable, 1 meter
C-Q200-4S50-2M	200GBASE-CR4 QSFP to 4 x 50GBASE-CR SFP Twinax Copper Cable, 2 meter
C-Q200-4S50-3M	200GBASE-CR4 QSFP to 4 x 50GBASE-CR SFP Twinax Copper Cable, 3 meter
200 Gigabit Ethernet QSFP Optics	
QSFP-200G-SR4	200GBASE-SR4 QSFP Transceiver, MPO12 UPC connector, up to 70m/100m over OM3/OM4 parallel MMF, 200G/100G dual rate
QSFP-200G-FR4	200GBASE-FR4 QSFP Transceiver, up to 2km over duplex single-mode fiber, 200G/100G dual rate
100 Gigabit Ethernet QSFP Twinax Copper cables	
CAB-Q-Q-100G-0.5	100GBASE-CR4 QSFP to QSFP Twinax Copper Cable 0.5 meter
CAB-Q-Q-100G-1M	100GBASE-CR4 QSFP to QSFP Twinax Copper Cable 1 meter
CAB-Q-Q-100G-1.5	100GBASE-CR4 QSFP to QSFP Twinax Copper Cable 1.5 meter
CAB-Q-Q-100G-2M	100GBASE-CR4 QSFP to QSFP Twinax Copper Cable 2 meter
CAB-Q-Q-100G-2.5	100GBASE-CR4 QSFP to QSFP Twinax Copper Cable 2.5 meter
CAB-Q-Q-100G-3M	100GBASE-CR4 QSFP to QSFP Twinax Copper Cable 3 meter
CAB-Q-Q-100G-5M	100GBASE-CR4 QSFP to QSFP Twinax Copper Cable 5 meter
CAB-Q-4S-100G-1M	100GBASE-CR4 QSFP to 4 x 25GBASE-CR SFP Twinax Copper Cable, 1 meter
CAB-Q-4S-100G-2M	100GBASE-CR4 QSFP to 4 x 25GBASE-CR SFP Twinax Copper Cable, 2 meter
CAB-Q-4S-100G-3M	100GBASE-CR4 QSFP to 4 x 25GBASE-CR SFP Twinax Copper Cable, 3 meter
CAB-Q-4S-100G-5M	100GBASE-CR4 QSFP to 4 x 25GBASE-CR SFP Twinax Copper Cable, 5 meter
CAB-Q-2Q-100G-1M	100GBASE-CR4 QSFP to 2 x 50GBASE-CR2 QSFP Twinax Copper Cable, 1M
CAB-Q-2Q-100G-2M	100GBASE-CR4 QSFP to 2 x 50GBASE-CR2 QSFP Twinax Copper Cable, 2M
CAB-Q-2Q-100G-3M	100GBASE-CR4 QSFP to 2 x 50GBASE-CR2 QSFP Twinax Copper Cable, 3M
CAB-Q-2Q-100G-5M	100GBASE-CR4 QSFP to 2 x 50GBASE-CR2 QSFP Twinax Copper Cable, 5M

Order Number	Product Description
100 Gigabit Ethernet QSFP Active Optical Cables	
AOC-Q-Q-100G-1M	100GbE QSFP to QSFP Active Optical Cable, 1m
AOC-Q-Q-100G-3M	100GbE QSFP to QSFP Active Optical Cable, 3m
AOC-Q-Q-100G-5M	100GbE QSFP to QSFP Active Optical Cable, 5m
AOC-Q-Q-100G-7M	100GbE QSFP to QSFP Active Optical Cable, 7m
AOC-Q-Q-100G-10M	100GbE QSFP to QSFP Active Optical Cable, 10m
AOC-Q-Q-100G-15M	100GbE QSFP to QSFP Active Optical Cable, 15m
AOC-Q-Q-100G-20M	100GbE QSFP to QSFP Active Optical Cable, 20m
AOC-Q-Q-100G-25M	100GbE QSFP to QSFP Active Optical Cable, 25m
AOC-Q-Q-100G-30M	100GbE QSFP to QSFP Active Optical Cable, 30m
100 Gigabit Ethernet QSFP Optics	
QSFP-100G-SR4	100GBASE-SR4 QSFP Transceiver, MPO12 UPC connector, up to 70m/100m over parallel OM3/OM4 MMF
QSFP-100G-SR4-E	100GBASE-SR4-Enhanced QSFP E-Series Transceiver for low latency, MPO12 UPC connector, up to 30m/50m over parallel OM3/OM4 MMF without FEC (for low latency) or up to 70m/100m over OM3/OM4 MMF with FEC
QSFP-100G-XSR4	100GBASE-XSR4 QSFP Transceiver, MPO12 UPC connector, up to 150m / 300m over OM3 / OM4 MMF
QSFP-100G-SWDM4	100GBASE-SWDM4 QSFP Transceiver, up to 70m over OM3 or 100m over OM4 duplex multi-mode fiber
QSFP-100G-SRBD	100GBASE-BIDI QSFP Transceiver, up to 70m / 100m over OM3 / OM4 duplex multi-mode fiber
QSFP-100G-PSM4	100GBASE-PSM4 QSFP Transceiver, MPO12 APC connector, up to 500m over parallel SMF, 100G/40G dual rate
QSFP-100G-PLRL4	100GBASE-PLRL4 QSFP Transceiver, MPO12 APC connector, up to 2KMm over parallel SMF, 100G/40G dual rate
QSFP-100G-LR4	100GBASE-LR4 QSFP Transceiver, up to 10km over duplex SMF
QSFP-100G-LRL4	100GBASE-LRL4 QSFP Transceiver, up to 2km over duplex SMF
QSFP-100G-CWDM4	100GBASE-CWDM4 QSFP Transceiver, up to 2km over duplex SMF, 100G/40G dual rate
QSFP-100G-XCWDM4	100GBASE-XCWDM4 QSFP Transceiver, up to 10km over duplex SMF, 100G/40G dual rate
QSFP-100G-ERL4	100GBASE-ERL4 QSFP Transceiver, 30 to 40km over single-mode fiber
QSFP-100G-ZR4 ¹	100GBASE-ZR4 QSFP Transceiver, up to 80km over single-mode fiber
QSFP-100G-DR	100GBASE-DR single lambda QSFP Transceiver, up to 500m over duplex SMF
QSFP-100G-FR	100GBASE-FR single lambda QSFP Transceiver, up to 2km over duplex SMF
QSFP-100G-LR	100GBASE-LR single lambda QSFP Transceiver, up to 10km over duplex SMF
OSFP to 100G QSFP Adapter	
ADPT-O-Q-100G	OSFP to 100G QSFP adapter ²

1. QSFP-100G-ZR4 supported on specific platforms. Refer to Arista's Transceiver and Cable Guide for supported platforms.

2. Requires the OSFP port to be configured for 100G. Enables the use of QSFP optical modules in an OSFP port. For copper connectivity, use OSFP to QSFP breakout DACs. THE ADPT-O-Q-100GM does NOT enable a QSFP-DD module to be used in an OSFP port (only QSFP optical modules).

Order Number	Product Description
40 Gigabit Ethernet QSFP+ Twinax Copper Cables	
CAB-Q-Q-0.5M	40GBASE-CR4 QSFP+ to QSFP+ Twinax Copper Cable 0.5 meter
CAB-Q-Q-1M	40GBASE-CR4 QSFP+ to QSFP+ Twinax Copper Cable 1 meter
CAB-Q-Q-2M	40GBASE-CR4 QSFP+ to QSFP+ Twinax Copper Cable 2 meter
CAB-Q-Q-3M	40GBASE-CR4 QSFP+ to QSFP+ Twinax Copper Cable 3 meter
CAB-Q-Q-5M	40GBASE-CR4 QSFP+ to QSFP+ Twinax Copper Cable 5 meter
CAB-Q-S-0.5M	4 x 10GbE QSFP+ to 4 x SFP+ Twinax Copper Cable 0.5 meter
CAB-Q-S-1M	4 x 10GbE QSFP+ to 4 x SFP+ Twinax Copper Cable 1 meter
CAB-Q-S-2M	4 x 10GbE QSFP+ to 4 x SFP+ Twinax Copper Cable 2 meter
CAB-Q-S-3M	4 x 10GbE QSFP+ to 4 x SFP+ Twinax Copper Cable 3 meter
CAB-Q-S-5M	4 x 10GbE QSFP+ to 4 x SFP+ Twinax Copper Cable 5 meter
40 Gigabit Ethernet QSFP+ Active Optical Cables	
AOC-Q-Q-40G-3M	QSFP+ to QSFP+ 40GbE Active Optical Cable 3 meter
AOC-Q-Q-40G-5M	QSFP+ to QSFP+ 40GbE Active Optical Cable 5 meter
AOC-Q-Q-40G-7M	QSFP+ to QSFP+ 40GbE Active Optical Cable 7 meter
AOC-Q-Q-40G-10M	QSFP+ to QSFP+ 40GbE Active Optical Cable 10 meter
AOC-Q-Q-40G-15M	QSFP+ to QSFP+ 40GbE Active Optical Cable 15 meter
AOC-Q-Q-40G-20M	QSFP+ to QSFP+ 40GbE Active Optical Cable 20 meter
AOC-Q-Q-40G-25M	QSFP+ to QSFP+ 40GbE Active Optical Cable 25 meter
AOC-Q-Q-40G-30M	QSFP+ to QSFP+ 40GbE Active Optical Cable 30 meter
AOC-Q-Q-40G-50M	QSFP+ to QSFP+ 40GbE Active Optical Cable 50 meter
AOC-Q-Q-40G-75M	QSFP+ to QSFP+ 40GbE Active Optical Cable 75 meter
AOC-Q-Q-40G-100M	QSFP+ to QSFP+ 40GbE Active Optical Cable 100 meter
40 Gigabit Ethernet QSFP+ Optics	
QSFP-40G-SR4	40GBASE-SR4 QSFP+ Transceiver, MPO12 UPC connector, up to 100m over OM3 MMF or 150m over OM4 MMF
QSFP-40G-XSR4	40GBASE-XSR4 QSFP+ Transceiver, MPO12 UPC connector, up to 300m over OM3 MMF or 400m over OM4 MMF
QSFP-40G-SRBD	40GBASE-BIDI Bidirectional QSFP+ Transceiver, up to 100m over duplex OM3 or 150m over duplex OM4 MMF
QSFP-40G-SRBD-R	40GBASE-BIDI Receiver only QSFP+, up to 100m over duplex OM3 or 150m over duplex OM4 MMF
QSFP-40G-UNIV	40G Universal QSFP+ Transceiver, up to 150m over duplex OM3 and OM4 MMF or 500m over duplex SMF
QSFP-40G-LR4	40GBASE-LR4 QSFP+ Transceiver, up to 10km over SMF
QSFP-40G-LRL4	40G QSFP+ Transceiver, up to 1km over duplex SMF
QSFP-40G-PLR4	40G QSFP+ Transceiver, up to 10km over parallel SMF (4x10G LR up to 10km) MTP-12
QSFP-40G-PLRL4	40G QSFP+ Transceiver, up to 1km over parallel SMF (4x10G LR up to 1km) MTP-12
QSFP-40G-ER4	40GBASE-ER4 QSFP+ Transceiver, up to 40km over SMF

Order Number	Product Description
--------------	---------------------

100 Gigabit Ethernet SFP-DD Twin Copper Cables

C-Z100-Z100-1M	100GBASE-CR2 SFP-DD to SFP-DD Twin Copper Cable, 1 meter
C-Z100-Z100-2M	100GBASE-CR2 SFP-DD to SFP-DD Twin Copper Cable, 2meter
C-Z100-Z100-3M	100GBASE-CR2 SFP-DD to SFP-DD Twinax Copper Cable, 2 meter
C-Z100-Q100-1M	100GBASE-CR2 SFP-DD to QSFP Twinax Copper Cable, 1 meter
C-Z100-Q100-2M	100GBASE-CR2 SFP-DD to QSFP Twinax Copper Cable, 2meter
C-Z100-Q100-3M	100GBASE-CR2 SFP-DD to QSFP Twinax Copper Cable, 3meter
C-Z100-2S50-1M	100GBASE-CR2 SFP-DD to 2x 50GBASE-CR SFP Twinax Copper Cable, 1 meter
C-Z100-2S50-2M	100GBASE-CR2 SFP-DD to 2x 50GBASE-CR SFP Twinax Copper Cable, 2meter
C-Z100-2S50-3M	100GBASE-CR2 SFP-DD to 2x 50GBASE-CR SFP Twinax Copper Cable, 3meter

100 Gigabit Ethernet DSFP Twin Copper Cables

C-Y100-Y100-1M	100GBASE-CR2 DSFP to DSFP Twinax Copper Cable, 1 meter
C-Y100-Y100-2M	100GBASE-CR2 DSFP to DSFP Twinax Copper Cable, 2meter
C-Y100-Y100-3M	100GBASE-CR2 DSFP to DSFP Twinax Copper Cable, 2 meter
C-Y100-Q100-1M	100GBASE-CR2 DSFP to QSFP Twinax Copper Cable, 1 meter
C-Y100-Q100-2M	100GBASE-CR2 DSFP to QSFP Twinax Copper Cable, 2meter
C-Y100-Q100-3M	100GBASE-CR2 DSFP to QSFP Twinax Copper Cable, 3meter
C-Y100-2S50-1M	100GBASE-CR2 DSFP to 2x 50GBASE-CR SFP Twinax Copper Cable, 1 meter
C-Y100-2S50-2M	100GBASE-CR2 DSFP to 2x 50GBASE-CR SFP Twinax Copper Cable, 2meter
C-Y100-2S50-3M	100GBASE-CR2 DSFP to 2x 50GBASE-CR SFP Twinax Copper Cable, 3meter

50 Gigabit Ethernet SFP Twinax Copper Cables

C-S50-S50-1M	50GBASE-CR SFP to SFP Twinax Copper Cable 1 meter
C-S50-S50-2M	50GBASE-CR SFP to SFP Twinax Copper Cable 2 meter
C-S50-S50-3M	50GBASE-CR SFP to SFP Twinax Copper Cable 2 meter

Order Number	Product Description
25 Gigabit Ethernet SFP Twinax Copper Cables	
CAB-S-S-25G-1M	25GBASE-CR SFP to SFP Twinax Copper Cable 1 meter
CAB-S-S-25G-2M	25GBASE-CR SFP to SFP Twinax Copper Cable 2 meter
CAB-S-S-25G-3M	25GBASE-CR SFP to SFP Twinax Copper Cable 3 meter
CAB-S-S-25G-5M	25GBASE-CR SFP to SFP Twinax Copper Cable 5 meter
25 Gigabit Ethernet SFP Active Optical Cables	
AOC-S-S-25G-3M	SFP to SFP 25GbE Active Optical Cable 3 meter
AOC-S-S-25G-5M	SFP to SFP 25GbE Active Optical Cable 5 meter
AOC-S-S-25G-7M	SFP to SFP 25GbE Active Optical Cable 7 meter
AOC-S-S-25G-10M	SFP to SFP 25GbE Active Optical Cable 10 meter
AOC-S-S-25G-15M	SFP to SFP 25GbE Active Optical Cable 15 meter
AOC-S-S-25G-20M	SFP to SFP 25GbE Active Optical Cable 20 meter
AOC-S-S-25G-25M	SFP to SFP 25GbE Active Optical Cable 25 meter
AOC-S-S-25G-30M	SFP to SFP 25GbE Active Optical Cable 30 meter
25 Gigabit Ethernet SFP Optics	
SFP-25G-SR	25GBASE-SR SFP Transceiver, up to 70m over OM3 MMF or 100m over OM4 MMF
SFP-25G-MR-SR	10/25GBASE-MR-SR Dual rate SFP Transceiver, up to 70m/100m over OM3/OM4 MMF at 25G and 300m/400m over OM3/OM4 MMF at 10G. Interoperates with 10G-SR when operated at 10G.
SFP-25G-MR-XSR *	10/25GBASE-MR-XSR (Extended Reach) Dual rate SFP Transceiver, up to 200m/300m over OM3/OM4 MMF at 25G and 300m/400m over OM3/OM4 MMF at 10G
SFP-25G-SR-E	25GBASE-SR-Enhanced SFP E-Series Transceiver for low latency, Up to 30m/50m over OM3/OM4 MMF without FEC (for low latency), or Up to 50m/100m over OM3/OM4 MMF with FEC
SFP-25G-LR	25GBASE-LR SFP Transceiver, up to 10 km over duplex SMF
SFP-25G-MR-LR *	10/25GBASE-MR-LR Dual rate SFP Transceiver, up to 10 km over duplex SMF
SFP-25G-LR-E	25GBASE-LR-Enhanced SFP E-Series Transceiver for low latency, Up to 2km over SMF without FEC (for low latency), or Up to 10km over SMF with FEC

* When connecting 25G-MR-XSR/LR optics to legacy fixed rate 10G optics, attenuation may be required to ensure the optical input power to the 10G optical module is within allowable limits. Refer to the relevant 10G-LR / SR optical specifications for requirements.

Order Number	Product Description
10 Gigabit Ethernet SFP+ Cables	
CAB-SFP-SFP-0.5M	10GBASE-CR SFP+ Cable 0.5 meter
CAB-SFP-SFP-1M	10GBASE-CR SFP+ Cable 1 meter
CAB-SFP-SFP-1.5M	10GBASE-CR SFP+ Cable 1.5 meter
CAB-SFP-SFP-2M	10GBASE-CR SFP+ Cable 2 meter
CAB-SFP-SFP-2.5M	10GBASE-CR SFP+ Cable 2.5 meter
CAB-SFP-SFP-3M	10GBASE-CR SFP+ Cable 3 meter
CAB-SFP-SFP-5M	10GBASE-CR SFP+ Cable 5 meter
10G Gigabit Ethernet SFP+ Active Optical Cables	
AOC-S-S-10G-3M	SFP+ to SFP+ 10GbE Active Optical Cable 3 meter
AOC-S-S-10G-5M	SFP+ to SFP+ 10GbE Active Optical Cable 5 meter
AOC-S-S-10G-7M	SFP+ to SFP+ 10GbE Active Optical Cable 7 meter
AOC-S-S-10G-10M	SFP+ to SFP+ 10GbE Active Optical Cable 10 meter
AOC-S-S-10G-15M	SFP+ to SFP+ 10GbE Active Optical Cable 15 meter
AOC-S-S-10G-20M	SFP+ to SFP+ 10GbE Active Optical Cable 20 meter
AOC-S-S-10G-25M	SFP+ to SFP+ 10GbE Active Optical Cable 25 meter
AOC-S-S-10G-30M	SFP+ to SFP+ 10GbE Active Optical Cable 30 meter
10 Gigabit Ethernet SFP+ Optics	
SFP-10G-T*	10G/1G/100M BASE-T Copper (RJ45) Transceiver, up to 30m over Cat6a cable
SFP-10G-MRA-T*	10G/1G/100M BASE-T Copper (RJ45) Rate Adapting Transceiver, up to 30m over Cat6a cable
SFP-10G-SRL	10GBASE-SRL SFP+ Transceiver, up to 100m over OM3 MMF or 150m over OM4 MMF
SFP-10G-SR	10GBASE-SR SFP+ Transceiver, up to 300m over OM3 MMF or 400m over OM4 MMF
SFP-10G-LRL	10GBASE-LRL SFP+ Transceiver, up to 1km over duplex SMF
SFP-10G-LR	10GBASE-LR SFP+ Transceiver, up to 10km over duplex SMF
SFP-10G-ERLBD-U	10GBASE-ERLBD SFP+ Transceiver, uplink, up to 30km over single fiber SMF
SFP-10G-ERLBD-D	10GBASE-ERLBD SFP+ Transceiver, downlink, up to 30km over single fiber SMF
SFP-10G-ERBD-U	10GBASE-ERBD SFP+ Transceiver, uplink, up to 40km over single fiber SMF
SFP-10G-ERBD-D	10GBASE-ERBD SFP+ Transceiver, downlink, up to 40km over single fiber SMF
SFP-10G-ER	10GBASE-ER SFP+ Transceiver, up to 40km over duplex SMF
SFP-10G-ZR	10GBASE-ZR SFP+ Transceiver, up to 80km over duplex SMF
SFP-10G-DZ-T**	10GBASE-DWDM Tunable SFP+ Transceiver, Full C-Band 50 GHz ITU Grid, up to 80km over duplex SMF
Gigabit Ethernet SFP Optics and Copper	
SFP-1G-SX	1000BASE-SX SFP Transceiver
SFP-10G-RA-1G-SX*	1000BASE-SX (media interface) to 10G (host interface) rate adapting SFP Transceiver
SFP-1G-LX	1000BASE-LX SFP Transceiver
SFP-10G-RA-1G-LX*	1000BASE-LX (media interface) to 10G (host interface) rate adapting SFP Transceiver
SFP-1G-T	100/1000BASE-T SFP Copper Transceiver

* SFP-10G-T & rate adapting transceivers supported on specific platforms. Refer to Arista's Transceiver and Cable Guide for supported platforms.

** A full list of 50GHz grid and 100GHz grid channel numbers, wavelengths and frequencies are listed in the following pages of this data sheet.

Arista 50GHz Channel Numbers and Wavelengths (50GHz ITU grid) for SFP-10G-DZ-T

Channel Number	Frequency (THz)	Wavelength (nm)	Channel Number	Frequency (THz)	Wavelength (nm)	Channel Number	Frequency (THz)	Wavelength (nm)
1	191.2	1567.95	33	192.8	1554.94	65	194.4	1542.14
2	191.25	1567.54	34	192.85	1554.53	66	194.45	1541.74
3	191.3	1567.13	35	192.9	1554.13	67	194.5	1541.35
4	191.35	1566.72	36	192.95	1553.73	68	194.55	1540.95
5	191.4	1566.31	37	193.0	1553.33	69	194.6	1540.55
6	191.45	1565.90	38	193.05	1552.92	70	194.65	1540.16
7	191.5	1565.49	39	193.1	1552.52	71	194.7	1539.76
8	191.55	1565.08	40	193.15	1552.12	72	194.75	1539.37
9	191.6	1564.68	41	193.2	1551.72	73	194.8	1538.97
10	191.65	1564.27	42	193.25	1551.32	74	194.85	1538.58
11	191.7	1563.86	43	193.3	1550.92	75	194.9	1538.18
12	191.75	1563.45	44	193.35	1550.51	76	194.95	1537.79
13	191.8	1563.04	45	193.4	1550.11	77	195.0	1537.39
14	191.85	1562.64	46	193.45	1549.71	78	195.05	1537.00
15	191.9	1562.23	47	193.5	1549.31	79	195.1	1536.61
16	191.95	1561.82	48	193.55	1548.91	80	195.15	1536.21
17	192.0	1561.42	49	193.6	1548.51	81	195.2	1535.82
18	192.05	1561.01	50	193.65	1548.11	82	195.25	1535.43
19	192.1	1560.60	51	193.7	1547.71	83	195.3	1535.03
20	192.15	1560.20	52	193.75	1547.31	84	195.35	1534.64
21	192.2	1559.79	53	193.8	1546.91	85	195.4	1534.25
22	192.25	1559.39	54	193.85	1546.52	86	195.45	1533.86
23	192.3	1558.98	55	193.9	1546.12	87	195.5	1533.46
24	192.35	1558.58	56	193.95	1545.72	88	195.55	1533.07
25	192.4	1558.17	57	194.0	1545.32	89	195.6	1532.68
26	192.45	1557.77	58	194.05	1544.92	90	195.65	1532.29
27	192.5	1557.36	59	194.1	1544.52	91	195.7	1531.90
28	192.55	1556.96	60	194.15	1544.13	92	195.75	1531.50
29	192.6	1556.55	61	194.2	1543.73	93	195.8	1531.11
30	192.65	1556.15	62	194.25	1543.33	94	195.85	1530.72
31	192.7	1555.74	63	194.3	1542.93	95	195.9	1530.33
32	192.75	1555.34	64	194.35	1542.54	96	195.95	1529.94

Arista 100GHz Channel Numbers and Wavelengths (100GHz ITU grid) for SFP-10G-DZ-T

Channel Number	Frequency (THz)	Wavelength (nm)	Channel Number	Frequency (THz)	Wavelength (nm)	Channel Number	Frequency (THz)	Wavelength (nm)
1	191.2	1567.95	17	192.8	1554.94	33	194.4	1542.14
2	191.3	1567.13	18	192.9	1554.13	34	194.5	1541.35
3	191.4	1566.31	19	193.0	1553.33	35	194.6	1540.55
4	191.5	1565.49	20	193.1	1552.52	36	194.7	1539.76
5	191.6	1564.68	21	193.2	1551.72	37	194.8	1538.97
6	191.7	1563.86	22	193.3	1550.92	38	194.9	1538.18
7	191.8	1563.04	23	193.4	1550.11	39	195.0	1537.39
8	191.9	1562.23	24	193.5	1549.31	40	195.1	1536.61
9	192.0	1561.42	25	193.6	1548.51	41	195.2	1535.82
10	192.1	1560.60	26	193.7	1547.71	42	195.3	1535.03
11	192.2	1559.79	27	193.8	1546.91	43	195.4	1534.25
12	192.3	1558.98	28	193.9	1546.12	44	195.5	1533.46
13	192.4	1558.17	29	194.0	1545.32	45	195.6	1532.68
14	192.5	1557.36	30	194.1	1544.52	46	195.7	1531.90
15	192.6	1556.55	31	194.2	1543.73	47	195.8	1531.11
16	192.7	1555.74	32	194.3	1542.93	48	195.9	1530.33

Standards Compliance & Certifications

EMC Emissions & Immunity	Subpart B, Part 15 FCC Class A, ICES-003 Issue 7 EN 55032:2015, BS EN 55032:2015, EN 55035:2017, EN 300 386 V2.1.1
Safety	EN 62368-1:2014 + A11:2017, IEC 62368-1:2014 21CFR-1040.10 LN#50, Laser Class 1 or 1M IEC 60825-1, Laser Class 1 or 1M EN 60825-1,
Certifications	CE South Korea KCC Australia RCM UKCA
European Union Directives	2014/35/EU Low Voltage Directive 2014/30/EU EMC Directive 2012/19/EU WEEE Directive 2011/65/EU RoHS 2015/863/EU Commission Delegated Directive

Warranty

Arista pluggables and cables include a one-year limited hardware warranty, which covers parts, repair, or replacement with a 10 business day turn-around after the unit is received.

Service and Support

Support services including next business day and 4-hour advance hardware replacement are available. For service depot locations, please see: <http://www.arista.com/en/service>

Headquarters

5453 Great America Parkway
Santa Clara, California 95054
408-547-5500

Support

support@arista.com
408-547-5502
866-476-0000

Sales

sales@arista.com
408-547-5501
866-497-0000