



**Atec
Supply[®]**

2013 CATALOG SUPPLEMENT

**ALTEC SUPPLY...YOUR FULL LINE SUPPLIER FOR THE UTILITY,
TELECOMMUNICATIONS, TREE CARE, & CONSTRUCTION INDUSTRIES**

KLEIN TOOLS®

FOR A LIMITED TIME
GET A FREE*
DEMOLITION
DRIVER

take and deliver a
BEATING

Heat-treated shaft runs length of handle to metal strike cap



Save your other tools from the abuse these demo drivers are designed to take. A plated metal strike cap protects the handle from hammer blows. Unique screwdriver design transfers impact force directly to the work surface. These slotted demo drivers are available in 4" and 7" blade lengths and 1/4" and 5/16" tip sizes.

- Patented Tip-Ident[®], quickly identifies the type of demo driver and demo driver tip orientation
- Heat treated metal shaft runs complete length of handle to metal strike cap to transfer metal strike force
- Premium chrome plated for smooth feel and corrosion resistance
- Internal flanges inside handle provide solid, twist-resistant blade anchor
- Cushion-Grip handle allows for greater torque and comfort
- Meets or exceeds applicable ASME / ANSI specifications
- Special heat-treated shafts
- Precision-machined tip for exact fit

PROUDLY MADE IN THE



* WHEN YOU BUY A **Compact ACSR Cable Cutter**
OR A **4-In-1 Impact Socket**



COMPACT ACSR CABLE CUTTER

- Cleanly cuts 336mcm Linnet ACSR and triplex steel messenger cable
- Cleanly cuts copper up to 400 MCM, as well as aluminum and multi-conductor cables up to 600 MCM
- Unique ratchet action holds cable tight and allows rapid, straight cuts with minimum effort
- Hold-open spring speeds cutting action
- Quick-release lever opens blade at anytime during operation
- Large, finger-formed handles have limit guards
- Compact, lightweight tool can be locked in closed position for pouch carrying

P/N 9703-30038 63607

4-IN-1 IMPACT SOCKET

- 7/16" hex quick-change adapter included
- Features three square socket sizes: 3/4" (also works on 13/16"), 1" and 1-1/8"
- Fine tuned ball detent provides improved retention, minimizing drops
- 13/16" diameter, 6" long hollow shaft allows use on long threaded bolts

P/N 9703-77682 602-7DD NRHD **

** Adapter for 4-in-1 Impact Socket is P/N 9703-30034 NRHDA



USA: 1-877-GO ALTEC
(1-877-462-5832)

www.alteconnect.com

**Altec
Supply**



UTILITY STORAGE

Innovative, Practical Solutions To Haul Utility Tools And Gear

LINEMAN BACKPACK

WIDE OPENING and LARGE FRONT POCKET



- Wide opening easily accommodates other equipment
- Large front pocket for separate storage of gaffs, rubber gloves or other equipment
- Durable, double stitched plastic bottom with drain holes
- Adjustable padded shoulder straps with adjustable chest strap
- Padded back area

P/N 9704-34710 5185ORA

Auto-Loading Retractable Utility Knife

- Auto-loading blade feature
- Rubber grips on handle
- Heavy-duty durable construction
- Blade release button for easy blade change
- Internal blade storage includes, holds 3 blades
- High quality, triple ground blades stay sharp longer

P/N 9704-34698 44132 Standard Design

P/N 9704-34701 44130 Folding Model



Folding Utility Knife

- Push button to easily open and close
- Heavy-duty durable construction
- High quality, triple ground blades stay sharp longer
- Rubber grips on handle for improved control and comfort

P/N 9704-34703 44131



Klein Curve Retractable Utility Knife

- Heavy-duty durable construction
- Blade release button for easy blade change
- Designed for improved comfort and cutting ability
- High quality, triple ground blades stay sharp longer
- Rubber grips on handle for improved control and comfort
- Internal blade storage includes and holds 6 blades

P/N 9704-34705 44133



Utility Knife Blade Dispenser

- 50 blades included
- High quality, triple ground blades stay sharp longer
- Gauge on dispenser indicates blades remaining
- Convenient interim storage for used blades
- Blades are compatible with all standard utility knives

P/N 9704-34706 44103



UTILITY KNIVES

USA: 1-877-GO ALTEC
(1-877-462-5832)

www.alteconnect.com

NANO-LOK™

SELF RETRACTING LIFELINE



Nano-Lok™ Twin Leg Self Retracting Lifeline with Quick Connector

- **COMPACT** – At only 1.9 lbs., it is the *smallest and lightest* arc flash SRL on the market!
- **VERSATILE** – Unrivaled jobsite flexibility
- 16 standard Nano-Lok™ configurations to meet virtually any arc flash or hot-work need
- 2 unique web leg configuration specifically designed for bucket truck and aerial lift applications.
- Industry leading 420 lb. (190 kg) user capacity
- **SAFE** – The Nano-Lok™ Arc Flash SRL has been tested to ASTM F887-11 standard
- Electric arc performance of 40 cal/cm2
- Replaces lanyards and improves worker safety
- Stops falls within inches and reduces fall distances!

100% Kevlar® with NanoSphere® Coating offers spark and fire resistance for utility, welding and torching applications while the NanoSphere® coating provides abrasion resistance and a “self-cleaning” effect.

QUICK-CONNECT ANCHORAGE CONNECTOR

- Attaches directly to back of most harnesses—no separate carabiner required
- Installs to web, leaving dorsal D-ring open for other equipment or rescue
- Design provides snug fit to worker’s back—eliminates nuisance “flopping”

ARC FLASH RATED RETRACTABLE LIFELINE

6-ft. 100% Kevlar® with NanoSphere® coating lifeline provides continuous fall protection without restrictions—keeps lifeline out of worker’s way, reducing dragging, snagging & trip falls

WIDE VARIETY OF CONFIGURATIONS

Provides complete jobsite versatility & flexibility

420 LB. WEIGHT CAPACITY

Higher capacity for operator & tools

MEETS OR EXCEEDS INDUSTRY STANDARDS

OSHA 1926.502, 1910.66, ANSI Z359.14, A10.32 & ASTM F887-11



EXTREMELY COMPACT & LIGHTWEIGHT

The Nano-Lok™ is the lightest, most compact unit on the market in its class.

SWIVELING ANCHORAGE LOOP

Limits lifeline twisting for smoother operation

IMPACT-RESISTANT HOUSING

High-strength housing provides maximum durability

AUTOMATIC QUICK-ACTIVATING ARRESTOR

Stops falling worker within inches reduces fall distances & average arresting forces to 900 lbs. or less

ARC FLASH COMPLIANT

Arc flash rated shock pack cover with protective flap

IMPACT INDICATOR

Integrated shock absorber provides visual indication of a fall

3,600 LB. GATE HOOK

Reduces chances of accidental disengagement



USA: 1-877-GO ALTEC
(1-877-462-5832)

www.alteconnect.com

Several Models are Available.
Please call 1-877-GO ALTEC for more information.

= rollgliss™ =

SIMPLY THE BEST ESCAPE
SOLUTION ON THE MARKET.

capital
SAFETY

Integrated Rope Ears

Allows for greater descent speed control in assisted rescues



Dual Redundant Brakes

Automatic descent with added security, safety and peace of mind

Cast Aluminum Housing

Lightweight and extremely durable cast housing

Durable Rope

3/8" Static Kernmantle Rope
NFPA – L rated for durability.

Steel Snap Hooks

3/4" gate opening—
3,600 lb. gate strength

Multiple Length Options

Lengths between 50 ft.
and 500 ft.



Anchorage

Used to anchor the device with either a carabiner or a sling

Bi-Directional Hub

Rope descends from either side which brings one hook up as the other goes down. Allowing for immediate use after each descent.

P/N 9704-34713	3305040	50 ft. Length*
P/N 9704-34714	3305041	100 ft. Length*
P/N 9704-34715	3305042	200 ft. Length*
P/N 9704-34716	3305043	300 ft. Length*
P/N 9704-34717	3305044	400 ft. Length*
P/N 9704-34718	3305045	500 ft. Length*

* Lengths are Working Lengths

**Fully Automatic, Hands-Free Descent.
Easier To Use And Requires Less Training!**



USA: 1-877-GO ALTEC
(1-877-462-5832)

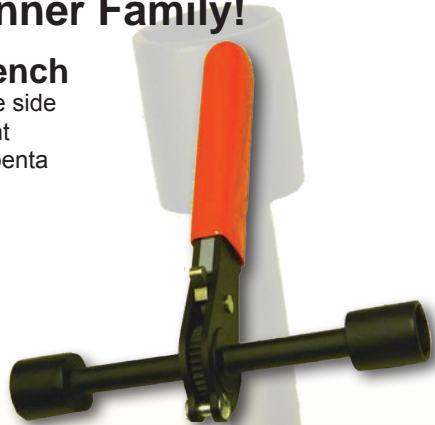
www.alteconnect.com

FARGO[®] Adds *Three* New Wrenches To The Lineman's Nut Runner Family!

Pad Mount Transformer Wrench

- The "pinned" head prevents spreading the side plates while canter-levering the pad mount transformer case with the extended 7/8" penta socket or 3/4" hex socket
- The reversible ratchet is torque tested to 90 foot pounds

P/N 9704-44185 GPHP34



Multi-Task Nut Runner and Hex Nut Wrench



- Both feature a 3-in-1 combination square socket and a 2-in-1 hex socket
- The unique bolt-through square socket fits nuts for 3/4", 5/8" and 1/2" machine bolts and a hex socket for nuts on 3/8" or 1/2" bolts on opposite end.
- The longer P/N 9704-44187 (GPDE3812L) allows more leverage for installing nuts in difficult positions or unfavorable weather

P/N 9704-44186 GPDE3812

P/N 9704-44187 GPDE3812L

All three wrenches are made in the USA with reversible ratchet and heavy duty construction.

USA: 1-877-GO ALTEC
(1-877-462-5832)

www.alteconnect.com

CHANCE[®] Drive Tools For Installing SS or RR Anchors



A New Alignment Window makes it easier to attach tooling to the SS or RR Anchor!

Drive Tool

- Helps reduce possible finger pinch point between anchor and tool
- Reduces installation time
- An appropriate Kelly bar adapter is required (sold separately)
- Each comes with bolts, nuts, and lockwashers

(6) 1/2" Holes on a 5-1/4" Bolt Circle:

P/N 9000-63901 639001 SS5/SS150/RR Drive Tool

(12) 5/8" Holes on a 7-5/8" Bolt Circle

P/N 9000-70305 C3030195 SS175 Drive Tool

P/N 9701-97931 C3030201 SS200 Drive Tool

P/N 9704-34733 C3030202 SS225 Drive Tool



*Requires use of T3030166 adapter, and limited to 10,000 ft.-lb., when used with STANDARD Kelly bar adapter (with a 5 1/4" bolt circle).



Drive Tool with Locking Dogs

- Each of these drive tools includes an integral set of locking dogs that attach the drive tool to the anchor. There is no need to use bent arm pin and coil lock to attach these tools to an anchor.
- These drive tools require the appropriate Kelly bar adapter, sold separately
- Each comes with bolts, nuts and lockwashers

P/N 9704-34735 C3031650

SS5/SS150 Drive Tool with Locking Dog

(6) 1/2" Holes on a 5-1/4" Bolt Circle

P/N 9704-34742 C3031645

SS175 Drive Tool with Locking Dog

(12) 5/8" Holes on a 7-5/8" Bolt Circle

Adapter for Installation of SS or RR Anchors

These tools slide into locking dog adapter and are retained by spring loaded dogs.

Fits STANDARD Locking Dog Assembly

P/N 9000-30020 C3030020 SS5/SS150/RR Drive Tool

Fits TOUGH ONE Locking Dog Assembly

P/N 9000-01035 C3031035 SS5/SS150/RR Drive Tool

P/N 9701-87580 T3031403 SS175 Drive Tool

P/N 9701-97932 C3031077 SS200 Drive Tool



**USA: 1-877-GO ALTEC
(1-877-462-5832)**

www.alteccconnect.com

CHANCE[®]

Hot Line Tools



SAFETYSHIELD™ Hot Stick Barriers

- Mounts on a 1 1/4" or 1 1/2" diameter live line tool in less than a minute
- Adds up to 24" diameter protective screen between lineman and a potential electrical hazard
- Should be mounted on the hotstick nearest the point where an electrical arc flashback may occur
- Made with a flame-retardant transparent polycarbonate protective shield
- Shield is affixed with a nylon fastener to a glass-filled nylon clamp



SAFETYSHIELD™ Hot Stick Barriers in Three Standard Diameters

P/N 9701-94512	PSC4170627	16" Diameter
P/N 9700-87419	PSC4170628	21" Diameter
P/N 9701-55196	PSC4170629	24" Diameter

Full Range (600V - 500kV) Auto Ranging Voltage Indicator



- 600V - 500kV
- For Overhead and URD Systems
- Bright display lights indicate voltage class
- Quickly displays the approximate phase-to-phase voltage class
- Complies with OSHA 1910.269 to Test for Absence of Nominal Voltage
- An easy, reliable means for the operator to determine if a line is: De-energized, carrying less than normal system voltage from any source or induced charged from an adjacent live circuit, or energized at full system voltage
- Includes the tester unit, a shepherd hook probe, a straight probe, instruction manual and hard shell padded case

P/N 9703-35038	PSC4032915	Distribution / Transmission ARVI
P/N 9700-96809	H18766S	Shepherd Hook Probe
P/N 9700-57150	H18766	Straight Probe
P/N 9000-00428	T4030428	15kV only Bushing Adapter
P/N 9007-40308	T4030856	15 - 35kV Elbow Adapter
P/N 9000-08570	T4030857	15 - 35kV Bushing Adapter

USA: 1-877-GO ALTEC
(1-877-462-5832)

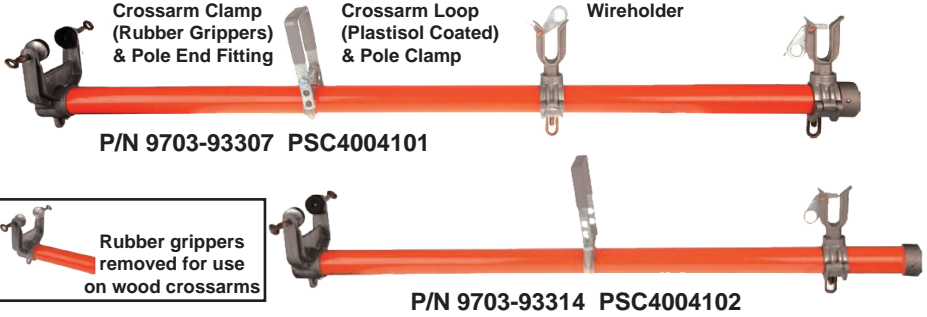
www.alteconnect.com



From the name you trust and the brand you depend on,
Chance Tools are optimally designed.



Universal Extension Arms



- Fit composite or wood crossarms up to 3-3/4" x 4-3/4"
- Cushioned clamp and hanger loop to protect composite arms
- Grippers on clamp can be removed for wood crossarms
- Design allows removal of components for reconditioning pole
- Designed for use with rubber gloves or hot sticks

P/N 9703-93307 PSC4004101 6' Universal Extension Arm
P/N 9703-93314 PSC4004102 5' Universal Extension Arm

Universal Extension Arm Retrofit Kit

Allows conversion of wood-only Extension Arms to Universal Extension Arms



P/N 9703-93319 PSC4004103
6' Universal Extension Arm Retrofit Kit

Kit Instructions show how to cut off the old end fitting and drill for the attachment of the new end fitting via a carriage bolt.

Conversion permits easy removal of the Crossarm Clamp for periodic reconditioning of the pole.

USA: 1-877-GO ALTEC
(1-877-462-5832)

www.alteccconnect.com

STREAMLIGHT



STREAMLIGHT

STREAMLIGHT'S HL SERIES
NOW AVAILABLE IN RECHARGEABLE SYSTEMS!

STINGER® LED HL™ / STINGER DS® LED HL™



Streamlight's HL Series - now available in rechargeable systems! When you need maximum illumination with a wide beam to search a large area, the Stinger LED HL rechargeable, high lumen flashlight provides a blast of 640 lumens with 297 meters of beam distance.

- Multi-function On/Off push-button switch lets you choose three lighting modes and strobe
- Deep-dish parabolic reflector produces a concentrated beam with optimum peripheral illumination
- C4® LED technology, impervious to shock with a 50,000 hour lifetime
- DS mode features both a head-mounted switch and a second multi-function tactical tailswitch
- 3-cell, 3.6 Volt Ni-MH sub-C battery, rechargeable up to 1000 times
- Fits existing Stinger chargers
- Machined aircraft aluminum body with non-slip

- rubberized comfort grip; anti-roll rubber ring included
- IPX4 water-resistant; 1 meter impact resistance tested
- Unbreakable polycarbonate lens with scratch-resistant coating
- Stinger LED HL: 8.41"; 12.4 oz.
- Stinger DS LED HL: 8.85"; 12.8 oz.
- Serialized for positive identification
- Limited lifetime warranty



Specifications and Models

STINGER® LED HL™

P/N 9704-35073* Model 75430
120V AC/12V DC Chargers (2 Holders)

STINGER® DS LED HL™

P/N 9704-35083* Model 75454
120V AC/12V DC Chargers (2 Holders)
* Other Models Available

FL 1 STANDARD	HIGH	MEDIUM	LOW
	640 LUMENS	340 LUMENS	170 LUMENS
	1h 15min	2h	4h
	297m	210m	148m
	22,000cd	11,000cd	5,500cd

USA: 1-877-GO ALTEC
(1-877-462-5832)

www.alteconnect.com



STREAMLIGHT

3AA PROPOLYMER® HAZ-LO®

SAFETY RATED FLASHLIGHT This feature-laden, safety approved flashlight was designed to meet the stringent requirements of ANSI/UL 913 CAN/CSA C22.2 No. 157-92 intrinsically safe equipment for use in hazardous locations.

- High-performance, anti-static, thermoplastic material resistant to chemicals and solvents
- "Captured locking" set screw will not back out - prevents FOD (Foreign Object Debris)
- Safety measure: Set screw helps to avoid batteries being changed out, or the housing inadvertently being opened in a hazardous environment
- Visual and mechanical polarity protection helps ensure correct installation of batteries
- C4® LED technology - impervious to shock with a 50,000 hour lifetime - provides 120 lumens; runs 6.5 hours
- Sealed switch design protects it from corrosion caused by battery leakage
- Smooth parabolic reflector produces a tight beam with optimum peripheral illumination
- Regulated run time provides consistent performance throughout battery life
- IP67 rated for dust-tight and waterproof to 1 meter for 30 minutes; IPX4 for water spray
- 3 meter impact resistance tested
- Ergonomically designed for maximum hand comfort
- 7.00 in. (17.78 cm); 7.5 oz (213 grams) with batteries (included)
- Limited Lifetime Warranty



FL 1 STANDARD	3AA PROPOLYMER HAZ-LO
	120 LUMENS
	6h 30min
	237m
	14,000cd

Specifications and Models

- P/N 9704-35088* Model 68720 Yellow
 P/N 9704-35089* Model 68721 Black
 P/N 9704-35090* Model 68722 Orange

USA: 1-877-GO ALTEC
 (1-877-462-5832)

www.alteconnect.com

INCLUSIVE

AIR N ARC® I300 ALL-IN-ONE Power Systems®



- ✓ Welder
- ✓ Generator
- ✓ Air compressor
- ✓ Battery booster
- ✓ Battery charger
- ✓ Hydraulic pump

USA: 1-877-GO ALTEC
(1-877-462-5832)

The world's only ALL-IN-ONE Power System® that offers
SIX FORMS OF POWER
in one unit including a welder and hydraulic pump

The Vanair Air N Arc I-300 is the only system in the world to offer six forms of power in a single 48" unit. Driven by a single diesel engine, the I-300 provides an integrated 40 cfm rotary screw compressor, 7kW AC generator, 300 amp DC welder, battery booster, battery charger and 10.5 gpm hydraulic pump. The I-300 allows mechanics to stay productive and run all their tools including a hydraulic crane with the truck engine turned off.

P/N 9704-36246



www.alteconnect.com



ULTRA TUGGER

UT10-2S CABLE PULLER 10,000 LB. RATED

Speed

- 2-Speed gear motor enable 20% faster pulling time
- Shift from high-speed/low-load pulling to low-speed/high-load pulling with a simple double-tap motion on the foot pedal

Versatile

- Available with Mobile VersiBoom for less than 2 minute, 1 person set-up, and 20 feet tall
- Available with floor mount and chain mount for tighter spaces

Heavy Duty

- Customized gear motor specifically for heavy-duty cable pulling application and meet UL & cUL safety requirements

HEAVY DUTY
VERSATILE

UT10-2S & MOBILE VersiBOOM™ II (SHOWN WITH BOOM EXTENSION)

Quick Set-Up

- One person set-up in less than 2 minutes

Versatile

- Can be extended up to 20'
- Use with one 3' boom for tighter spaces

Easy to store and transport

- Can be folded up in less than 2 minutes and can be stored on the back of a pick-up truck
- Fully contained unit



ALTEC P/N	CAT. NO.	DESCRIPTION
9704-44479	6906	UT10-2S Package with Mobile Versi-Boom II
9704-44491	MVB	Mobile Versi-Boom II
9704-44494	6900	UT10-2S Package with Floor Mount
9704-44496	6901	UT10-2S Package with Chain Mount

Rope: A Critical Link In The Cable Pulling System

Required Rope is 7/8" Diameter Double-Braided Polyester Composite Rated at 32,000 lbs. Minimum Breaking Strength



- Double-braided inner core with an extra double-braided outer jacket for added strength and less stretch; white with green tracer
- Rot and mildew resistant
- Factory spliced eyes at both ends

ALTEC P/N	CAT. NO.	DESCRIPTION
9000-00082	34136	7/8" Double-Braided Composite Rope, 300'
9000-00083	34137	7/8" Double-Braided Composite Rope, 600'
9000-00084	34138	7/8" Double-Braided Composite Rope, 1,200'

 USA: 1-877-GO ALTEC
 (1-877-462-5832)

www.alteconnect.com



GREENLEE®

UTILITY
A Textron Company

15
TON

FLIP TOP

**Battery Powered
Crimping Tool**

More Capacity

~Improved Consistency

- Increased crimping capacity of up to 1250 MCM aluminum and 1500 MCM copper color coded lugs and splices
- Stable, symmetrical and consistent

Improved Usability

~32% Weight Reduction

- Weight reduction and improved balance provide less fatigue over time
- Weighs 16.3 lbs.
- The EK Battery version weighs a mere 16.3 lbs

Safer alternative

~Enclosed Crimping Head

- Features Greenlee's patented "Quick Release" spring loaded locking mechanism for faster engagement.
- Tool head rotates 350°

USA: 1-877-GO ALTEC
(1-877-462-5832)

www.alteconnect.com



**GREATER
CAPACITY**

**IMPROVED
USABILITY**



- Intelli-CRIMP™ Technology includes a pressure sensor that monitors the crimping force of each crimp and provides the operator a visual and audible alert if the force is below specifications.
- Automatic Retraction Stop (ARS) retracts the ram just enough to get ready for the next cycle, saving time and energy.
- Accepts P-style die to crimp splices and lugs up to 1500 kcmil copper and 1250 kcmil aluminum.
- Accepts Greenlee KC12, KA12, and KD12 crimping dies as well as industry U-style dies with optional UA15T adapters.
- 2" jaw opening.

ALTEC P/N	CAT NO.	DESCRIPTION
Gator® Battery-Powered 15 Ton Crimping Tool		
9704-00366	EK1550FTLU11	15 Ton Tool with 120 V Charger
9704-00367	EK1550FTLU12	15 Ton Tool with 12 V Charger
9704-00368	EK1550FTLU22	15 Ton Tool with 230 V Charger
9704-00369	EK1550FTLU120	15 Ton Tool, 120 V AC Adapter
9704-00370	EK1550FTLU230	15 Ton Tool, 230 V AC Adapter
9704-00371	UA15T	Die-Adaptors - Greenlee "U" style dies, Burndy "U" style dies, IlSCO ILD style dies, T&B 15500 style dies, Blackburn 15500 style dies
9704-00372	23492	Handle
9702-16519	52176	18V, 3.0 Ah, Li-ion Battery
9702-16795	52178	120V Charger
9702-39618	52179	230V Charger
9702-16796	52180	12V Charger
Low Pressure 15 Ton Crimping Tool		
9704-00377	LPK1550FT	15 Ton Low Pressure Tool
High Pressure 15 Ton Remote Crimping Head		
9704-00361	RK1550FT	15 Ton High Pressure Tool



GREENLEE®

UTILITY
A Textron Company

22% LESS WEIGHT / VERSATILE



LP6

6 Ton

LOW PRESSURE Hydraulic Cutting and Crimping Tool

Improved Usability

- 22% less weight versus existing competitive models

Platform Versatility

- Incorporates the same crimping and cutting jaws as Greenlee battery platform EK425L and EK628L

Factory installed coupler option for ease of purchase

Spring loaded pin for quick change over jaws

350° Rotating head aids in access to tight spaces

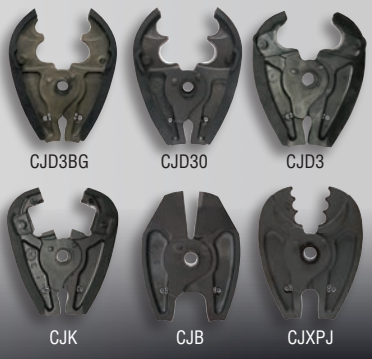
Interchangeable crimping and cutting jaws vs. competitive fixed jaw head

Light weight, enabling one hand operation – 8.4 lbs with jaw

SIMPLIFIED CUSTOMIZATION! Open/Closed ~ Coupler/No Coupler ~ Jaw Choice

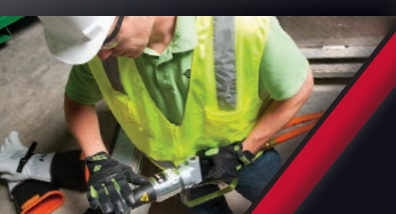
ALTEC P/N	CAT. NO.	JAW	COUPLERS	OPEN/CLOSED CENTER
9704-00379	LP6-01	Bare	NA	OPEN
9704-00380	LP6-02	Bare	NA	CLOSED
9704-00381	LP6-03	Bare	3/4-16 SAE	OPEN
9704-00382	LP6-04	Bare	3/4-16 SAE	CLOSED
9704-00383	LP6-05	CJD3BG	NA	OPEN
9704-00384	LP6-06	CJD3BG	NA	CLOSED
9704-00385	LP6-07	CJD3BG	3/4-16 SAE	OPEN
9704-00386	LP6-08	CJD3BG	3/4-16 SAE	CLOSED
9704-00387	LP6-09	CJD30	NA	OPEN
9704-00388	LP6-10	CJD30	NA	CLOSED
9704-00389	LP6-11	CJD30	3/4-16 SAE	OPEN
9704-00390	LP6-12	CJD30	3/4-16 SAE	CLOSED
9704-00391	LP6-13	CJD3	NA	OPEN
9704-00392	LP6-14	CJD3	NA	CLOSED
9704-00393	LP6-15	CJD3	3/4-16 SAE	OPEN
9704-00394	LP6-16	CJD3	3/4-16 SAE	CLOSED
9704-00395	LP6-17	CJK	NA	OPEN
9704-00396	LP6-18	CJK	NA	CLOSED
9704-00397	LP6-19	CJK	3/4-16 SAE	OPEN
9704-00398	LP6-20	CJK	3/4-16 SAE	CLOSED

INTERCHANGEABLE Crimping & Cutting Jaws



USA: 1-877-GO ALTEC
(1-877-462-5832)

www.alteconnect.com





GREENLEE®

UTILITY
A Textron Company

INTELLIGENT

VERSATILE

The new EHP700LU 10,000 PSI battery-powered hydraulic pump sets a new benchmark for portability. During design and development, priority was given to performance, ergonomics and economic efficiency.

Choose between three job specific programs: crimping, cutting and punching.

The new Greenlee EHP700LU is suitable for operating single acting cutting, crimping and punching tools of up to 10,000 PSI.

EHP700LU

Hydraulic Battery Powered Pump

USA: 1-877-GO ALTEC
(1-877-462-5832)

www.alteconnect.com



9704-00356



9701-90442



9704-00361



9704-00363



P/N	CAT NO.	DESCRIPTION
9703-90793	EHP700LU11	POWER PUMP, BAT 120V CHARGR
9703-90794	EHP700LU12	POWER PUMP, BAT 12V CHARGR
9704-00339	EHP700LU22	POWER PUMP, BAT 230V CHARGR
9704-00340	EHP700LU120	POWER PUMP, 120V ADAPTER
9704-00341	EHP700LU230	POWER PUMP, 230V ADAPTER
9704-00342	01059	HOSE ASSY, 1/4" X 6' 3/8M&3/8F FILLED
9704-00343	01058	HOSE ASSY, 1/4" X 6' 3/8M&1/4M FILLED
9704-00344	05850	HOSE ASSY, 1/4" X 10' 3/8M&3/8F FILLED
9704-00345	17707	HOSE ASSY, 1/4" X 10' 3/8M&1/4M FILLED
9704-00346	25766	ADAPTER, CHARGER 18V LI TO 12V NI
9702-16519	52176	BATTERY, 18V LI ION 3.0Ah
9702-16795	52178	CHARGER, BATTERY 120V
9702-39618	52179	CHARGER, BATTERY 230V
9702-16796	52180	CHARGER, BATTERY 12V
9702-88397	EAC18120	ADAPTER, AC - 120V TO 18V
9704-00352	EAC18230	ADAPTER, AC - 230V TO 18V
9704-00353	EL122/32	HYDRAULIC FLUID, BIODEGRADABLE
9704-00354	HTA4GL	REMOTE CONTROL
9704-00355	TG3	STRAP
REMOTE HEADS		
9704-00356	RK06AT	6T, QUAD POINT CRIMP TOOL, OPEN HEAD DIELESS
9704-00357	RK06FT	6T QUAD POINT CRIMP TOOL, FLIP TOP HEAD DIELESS
9701-90442	RK1240	12T CRIMP TOOL, 42MM
9704-00359	RK1240C	12T CRIMP TOOL, 42MM, PVC COVERED
9000-05386	RK1550	15T CRIMP TOOL, C-HEAD
9704-00361	RK1550FT	15T CRIMP TOOL, FLIP TOP HEAD
9000-10604	RK6040	CRIMPER, 60-TON
9704-00363	SDK105	REMOTE CABLE CUTTER - 4"
9704-00364	746	REMOTE KNOCKOUT RAM
9704-00365	750	CUTTER,CABLE HYD (750)



GREENLEE®

UTILITY
A Textron Company

ERGONOMIC

POWERFUL



9704-00357



9704-00364



9704-00359



9000-05386



9000-10604

MORE INTELLIGENT

- 3 in 1 program settings for crimping, cutting, punching functions.
- Real-time crimp force monitoring with numeric digital display featuring IntelliCRIMP™ technology.
- Audible and visual fault alert.
- Real-time work history with downloadable PDF application.

MORE ERGONOMIC

- The EHP700LU weighs a mere 14.1 pounds.
- Padded shoulder strap included for ease of transport.
- Operates in any orientation.
- On-board as well as corded remote activation switches.

MORE POWER

- The EHP700LU operates from a single 18V battery with on-board storage for second battery
- Pump provides real time charge status on both active and stored batteries.
- 18V lithium ion (Li-ion) battery provides 70% more cycles per charge.
- Available with 120V, 12V, or 230V battery charger.
- Available with 120V or 230V corded adapter for stationary applications.

MORE CONNECTIONS

- Connections are UL and cUL classified for copper and aluminum, when used with Greenlee tools on 7 brands of color-coded lugs and splices.
- Most competitive tools are UL approved with only one connector brand.

USA: 1-877-GO ALTEC
(1-877-462-5832)

www.alteconnect.com

Standard Features on Featured Products

- LXT Lithium-Ion battery provides longer run time, 5x lower self-discharge (for use any time) and 16 firm holding contact terminals (for constant high power)
- 30-Minute Rapid Optimum Charger communicates with the battery's built-in chip throughout the charging process to optimize battery life by actively controlling current, voltage and temperature
- 30-Minute Rapid Optimum Charger has a built-in fan to cool the battery to produce more lifetime work
- The charger earned the ENERGY STAR® label for meeting the strict energy-efficient guidelines set by the US Environmental Protection Agency (EPA) and US Department of Energy (DOE)
- 3-year warranty on tool and 1-year warranty on battery and charger

P/N 9702-16519	BL1830	Lithium Battery
P/N 9702-16796	DC18SE	Automotive Charger
P/N 9703-98248	DC18RA	Standard Charger
P/N 9703-98253	821016-X	Contractor Bag

18V LXT® Lithium-Ion Cordless 7/16" Hex High Torque Impact Wrench

- Engineered for drilling and fastening into treated wood utility poles without rotational torque to help maintain balance
- Delivers 325 ft.lbs. of Max Torque, with 1,900 RPM and 2,200 IPM for powerful drilling and fastening
- Rocker switch for forward/reverse operation
- Compact design of 10 3/4" long; weighs 7.8 lbs.
- Built-in L.E.D. light illuminates the work area
- LXT Lithium-Ion battery and Rapid Optimum Charger produces 430% total lifetime work with 3x more cycles
- Makita's proprietary hammer and anvil impact mechanism are manufactured using the best raw materials with the highest quality steel and unique heat hardening process for maximum fastening and driving power



P/N 9703-98242	LXWT01	7/16" Impact Wrench Kit
P/N 9703-98243	LXWT01Z	Impact Wrench, Bare Tool Only

18V LXT® Lithium-Ion Cordless Reciprocating Saw

- Makita-built variable speed motor delivers 0-2,900 strokes per minute combined with a 1 1/8" length stroke to provide faster cutting
- "Tool-less" blade change system
- Two built-in L.E.D. lights illuminate the work area
- Large 2-finger variable speed trigger for added convenience
- Retractable tool hook secures the tool when not in use
- Compact, ergonomic design at 19 5/8" long and only 8.2 lbs.
- LXT Lithium-Ion battery and Rapid Optimum Charger produces 430% total lifetime work with 3x more cycles



P/N 9703-98244	BJR181	1-1/8" Reciprocating Saw Kit
		2 Batteries, 1 Charger, 1 Blade
P/N 9703-98245	BJR182Z	1-1/8" Reciprocating Saw
		1 Blade, Bare Tool Only

USA: 1-877-GO ALTEC
(1-877-462-5832)

www.alteconnect.com

THE 18V SOLUTION FOR CORDED POWER DEMANDS

18V LXT® Lithium-Ion Cordless 4-1/2" Cut-Off/Angle Grinder

- Makita-built motor delivers 10,000 RPM for faster grinding
- Compact, ergonomic design at 12-1/2" long and only 5.0 lbs.
- Slide switch with lock-on for operator convenience
- Built-in L.E.D. protection circuit with over-torque control protects the motor
- LXT Lithium-Ion battery and Rapid Optimum Charger produces 430% total lifetime work with 3x more cycles

P/N 9703-98246 BGA452 4 1/2" Grinder Kit
P/N 9703-98247 BGA452Z 4 1/2" Grinder, Bare Tool Only



18V LXT® Lithium-Ion Cordless 5-3/8" Metal Cutting Saw

- Makita-built motor delivers 3,600 RPM for faster cutting in a wide range of metals including Unistrut® all thread, channel, conduit, pipe, sheet metal, square tubing, steel and more
 - Compact, ergonomic design at 13-3/4" long and weighs only 5.7 lbs. for reduced operator fatigue
 - Built-in L.E.D. light illuminates the work area
 - Soft grip handle for increased comfort on the job
- Kit - Metal Cut Saw**
Bare Tool Metal Cut Saw

P/N 9703-98251 BCS550
P/N 9703-98252 BCS550Z



18V LXT® Lithium-Ion Hammer Driver-Drill 33% More Torque Than The Previous Model!

- Makita-built 4-pole motor delivers 750 in. lbs. of Max Torque
- Mechanical 2-speed transmission (0-400 & 0-2,000 RPM)
- Compact design at only 8 7/8" long and weighs only 5.1 lbs.
- Extreme Protection Technology (XPT) engineered for increased dust and water resistance for operations in harsh jobsite conditions
- All metal gears and aluminum gear housing for maximum jobsite durability
- Shift-Lock™ Drive System quickly shifts between modes

- Dual L.E.D. lights with afterglow enhanced illumination of work area
- Ergonomic shape fits like a glove with even pressure and easy control
- Soft grip handle provides increased comfort on the job

P/N 9703-98249 LXPH03 Hammer Drill Kit
P/N 9703-98250 LXPH03Z Hammer Drill, Bare Tool Only



USA: 1-877-GO ALTEC
(1-877-462-5832)

www.alteconnect.com



INNOVATIVE SOLUTIONS FOR SAFETY EYEWEAR



AR3 Model # 16428 **NEW!**
Frame: Crystal Black
Lens: Super Dark Smoke
P/N 9704-38445



ES4 Model # 21427
Frame: Crystal Black
Lens: Polarized Silver Mirror
P/N 9703-50249



Cobra Model # 1541
Frame: Crystal Black
Lens: Smoke
P/N 9703-59552



MP7 Model # 24426
Frame: Crystal Black
Lens: Blue Green Polarized
P/N 9703-54254



Cobra Model # 1528
Frame: Matte Black
Lens: Red Mirror
P/N 9703-76106

Crossfire Safety Eyewear is an industry leader in designing and manufacturing ANSI Z87 2010 certified safety eyewear. Our approach to design affords the end user a seamless link between the latest in style and cutting edge technology.



AR3 Model # 161129 **NEW!**
Frame: Crystal Brown
Lens: Super Dark Brown
P/N 9704-38457



Diamond-Back Model # 2761AF
Frame: Matte Black
Lens: Anti-Fog Smoke
P/N 9702-78540



Infinity Model # 21126
Frame: Crystal Brown
Lens: HD Polarized Brown
P/N 9703-69602



ES5 Model # 29117
Frame: Crystal Brown
Lens: HD Brown Flash Mirror
P/N 9703-59527



RPG Model # 23226
Frame: Matte Black
Lens: Polarized HD Blue Mirror
P/N 9703-12227

USA: 1-877-GO ALTEC
(1-877-462-5832)

www.alteconnect.com

DVI DIGITAL VOLTAGE INDICATORS



- Audible indication when voltage is detected
- Easy-to-read in bright or dark conditions
- Built-in self-test to verify proper operation
- Auto-shutoff with low battery function
- Powered by a field-replaceable 9V alkaline battery
- No range selector switch or settings required
- Voltage readout allows user to distinguish between nominal and induced voltage
- Use on overhead lines or in underground applications with bushing probe
- Models available to measure Elbow Test Points
- Built-in universal spline for standard hotstick attachment
- Compact, rugged and lightweight polycarbonate housing
- Made in the USA

DVI-100 For Voltages up to 161kV (Reads up to 99kV Line-To-Ground)

- Large two-digit LED display indicates the line-to-ground voltage level

DVI-500 For Voltages up to 800kV (Reads up to 500kV Line-To-Ground)

- Large LED display indicates the line-to-ground voltage level

DVI-100 Model Kits

(DVI-100T Voltage Indicator Features Capacitive Test Point Mode)

P/N 9704-44065	DVI-100	DVI-100, HP-DVI-2, and CS-DVI
P/N 9704-44066	DVI-100T/K01	DVI-100T, HP-DVI-2, IEP-DVI-5 and CS-DVI
P/N 9704-44067	DVI-100T/K02	DVI-100T, HP-DVI-2, IEP-DVI-5, PT-DVI and CS-DVI
P/N 9702-97815	DVI-100/K01	DVI-100, HP-DVI-2, IEP-DVI-5 and CS-DVI
P/N 9701-08005	DVI-100/K02	DVI-100, HP-DVI-2, IEP-DVI-5, PT-DVI and CS-DVI

DVI-500 Model Kits

(DVI-500T Voltage Indicator Features Capacitive Test Point Mode)

P/N 9704-44068	DVI-500	DVI-500, HP-DVI-2, HP-DVI-6 and CS-DVI-5
P/N 9704-44069	DVI-500T/K01	DVI-500T, HP-DVI-2, HP-DVI-6, IEP-DVI-5, CS-DVI-5
P/N 9704-44070	DVI-500T/K02	DVI-500T, HP-DVI-2, HP-DVI-6, IEP-DVI-5, PT-DVI, CS-DVI-5
P/N 9704-44499	DVI-500/K01	DVI-500, HP-DVI-2, HP-DVI-6, IEP-DVI-5, CS-DVI-5
P/N 9703-21033	DVI-500/K02	DVI-500, HP-DVI-2, HP-DVI-6, IEP-DVI-5, PT-DVI, CS-DVI-5
P/N 9703-42455	DVI-500/K06	DVI-500, HP-DVI-2, HP-DVI-6, PT-DVI, CS-DVI-5

Accessories:

P/N 9703-42354	PT-DVI Proof Tester for Digital Voltage Indicators
P/N 9703-42350	IEP-DVI-5 Underground Bushing Probe, 15, 25 & 35 kV Class
P/N 9704-44071	HP-DVI-2 Overhead Hook Probe, 2" Diameter Opening
P/N 9704-44072	HP-DVI-6 Overhead Hook Probe, 6" Diameter Opening
P/N 9704-44073	CS-DVI-5 Rugged Plastic Case for DVI-500
P/N 9704-44074	B-30 Carrying Bag with Reflective Safety Stripes, Carrying Strap
P/N 9704-44075	HSA-2500 Universal Hotstick Adapter (Shotgun)
P/N 9702-52237	S-4H 4' Fixed Length Fiberglass Hotstick
P/N 9704-44500	S-6H 6' Fixed Length Fiberglass Hotstick

USA: 1-877-GO ALTEC
(1-877-462-5832)

www.alteconnect.com



The PRX Proximity Voltage Detector is a non-contact detector. When voltage is detected, the PRX gives an audible and visual indication, with a typical detection distance of 10 inches. The PRX has the ability to detect voltage on elbow test points at the 120V setting. With a rechargeable internal battery, the PRX can be charged quickly from a 115-240V outlet or 12VDC automotive outlet. The PRX is sealed to resist water penetration in typical outdoor environments, providing maximum protection.

Model PRX-69D (7) Standard Voltage Ranges from 120V to 69kV

Model PRX-500 (9) Standard Voltage Ranges from 120V to 500kV

- Sealed to resist water penetration in typical outdoor environments
- Loud beeper and LED lights indicate voltage
- Rechargeable battery with quick recharge
- Lightweight - weighs less than 1 pound
- Easy to use electronic touch pad with large buttons
- Detects voltages typically 10" from the source
- Heartbeat signal assures that PRX is ready to detect voltage
- Dual hotstick connections - universal spline & shotgun stick
- Detects voltage on most elbow test points
- Made in the USA



PRX-69D Model Kits

(Indicates Distribution Voltages from 120 VAC up to 69 kV with Rechargeable Battery):

P/N 9704-44076	PRX-69D/K01	PRX-69D, PRX-CORD
P/N 9704-44077	PRX-69D/K02	PRX-69D, PRX-CORD and PRX-XF
P/N 9704-44078	PRX-69D/K03	PRX-69D, PRX-CORD, PRX-XF, and B-2
P/N 9704-44079	PRX-69DH	PRX-69D, PRX-HS, PRX-CORD and PRX-XF
P/N 9704-44080	PRX-69DB	PRX-69D, PRX-HS, PRX-CORD, PRX-XF and B-2
P/N 9702-80266	PRX-69D	PRX-69D, PRX-HS, PRX-CORD, PRX-XF, PRX-CS

PRX-500 Model Kits

(Indicates Trans & Dist Voltages from 120 VAC up to 500 kV with Rechargeable Battery):

P/N 9704-44081	PRX-500/K01	PRX-500, PRX-CORD
P/N 9704-01503	PRX-500/K02	PRX-500, PRX-CORD and PRX-XF
P/N 9704-44082	PRX-500/K03	PRX-500, PRX-CORD, PRX-XF and B-2
P/N 9703-21812	PRX-500H	PRX-500, PRX-HS, PRX-CORD and PRX-XF
P/N 9704-44083	PRX-500B	PRX-500, PRX-HS, PRX-CORD, PRX-XF and B-2
P/N 9702-80266	PRX-500	PRX-500, PRX-HS, PRX-CORD, PRX-XF, PRX-CS

Accessories:

P/N 9704-44084	PRX-CORD	Charge Cord with 12VDC Automotive Jack 115-240 VAC Transformer to Plug PRX-CORD into 115-240 VAC Wall Outlet
P/N 9704-44085	PRX-XF	
P/N 9704-44086	PRX-HS	Carrying Holster with Belt Clip, Restraining Strap Carrying Case; Holds PRX, PRX-HS, Charge Cords Rechargeable Battery Replacement Kit; Contains Replacement Battery, Overlay Label, Instructions Padded, Zippered Carrying Bag with Strap; Holds PRX, PRX-HS and Charge Cords
P/N 9704-44087	PRX-CS	
P/N 9704-44088	050-00300-PRX	
P/N 9704-44089	B-2	



UNIVERSAL DIGITAL VOLTMETER KIT



- *Perform Voltmeter And Phasing Operations For Virtually All Overhead And Underground Applications*
- *Take Measurements On Secondary Voltages Starting At 5 Volts*
- *Take Measurements On Primary Voltages Up To 80 Kilovolts*
- *Take Measurements On Elbow Test Points With Test Point Feature*
- *Peak Voltage Reading Can Be Held Using The New Peak Hold Feature*
- *Perform Underground Cable Fault Testing With Cable Fault Tester*
- *Test The Voltmeter Before And After Use With Voltmeter Proof Tester*

- Digital Meter - Reads in kilovolts, 3.5 digits with decimal point
- Voltage Range - 5V-40kV, 5V-80kV with add-on resistors
- Auto-Ranging - No range selector switch
- Accuracy - Highly accurate, within 1% of reading +/- 3 counts
- Meter Resolution 0.005 - 1.999 range with 1 Volt resolution
2.00 - 19.99 range with 10 Volt resolution
20.0 - 40.0 range with 100 Volt resolution
- Backlit Display - For easy reading in bright or dark conditions
- Peak Hold Mode - Conveniently keeps the peak voltage reading on the display
- Measures AC and DC voltages
- RMS Voltage - Measures AC and DC thru 1000Hz RMS
- Use on Secondary Voltages - Starting at 5 Volts
- Measure voltage on elbow test points - Meter displays system voltage
- Underground Cable Testing - Test underground cables for faults using the CFT-35
- Auto-shutoff - Prevents battery drain
- Coiled Connecting Cord - 3.5' retracted, 12' extended
- Phase Accurate Technology makes all voltage readings, whether line-to-line or line-to-ground, accurate and repeatable to within 1%
- Battery - Powered by a standard 9V alkaline battery in an easy to change battery case - no tools required
- Weight of Voltmeter (without probes) - 2.25 lbs.
- Made in the USA

P/N 9704-05501 DVM-80UVM Universal Voltmeter - Tool Only

P/N 9704-13671 DVM-80UVK Universal Voltmeter Kit

Kit Includes:

- (1) Dual Stick Phasing Voltmeter (DVM-80UVM)
- (2) Overhead Hook Probes (025-OLPS-5)
- (2) Resistor Sticks For Measurements Up To 80kV (R-80)
- (2) Underground Bushing Probes (ASP-15/25)
- (1) Cable Fault Tester (CFT-35)
- (1) Voltmeter Proof Tester (PT-5000B)
- (2) Shotgun Hotstick Adapters (HSA-2500)
- (1) Soft-Sided, Multi-Functional Carrying Bag

USA: 1-877-GO ALTEC
(1-877-462-5832)

www.alteconnect.com

Milwaukee **BATTERY-POWERED TOOLS** Nothing But **HEAVY DUTY**®

GOOD FOR DRILLING LARGE HOLES IN CONCRETE

1-3/4" SDS Max Rotary Hammer

- Powerful 14-amp 1,300 MWO Milwaukee motor: Provides best-in-class power and highest overload protection
- Two-speed impact mode: Use low (350 RPM/2,200 BPM) for light materials or high (450 RPM/2,840 BPM) for the toughest concrete
- Durable hammer mechanism: Provides 8.8 ft-lbs of torque for hard hitting performance
- CPTTM Constant Power Technology: Delivers consistent performance when the tool is under load
- Mechanical clutch: Protects the motor when the bit binds
- AVS Anti-Vibration System: Minimizes vibration for maximum comfort
- Kit includes: (1) 1-3/4" SDS Max Rotary Hammer (5426-21), (1) Carrying Case, (1) Side Handle



P/N 9701-98903 5426-21

WHEN USED WITH P/N 9701-83111 ~ GREAT FOR DRIVING GROUND RODS

M18™ Cordless LITHIUM-ION Band Saw Kit



- 45% Lighter than Deep Cut – 10.25 Lbs. compact light weight design for cutting overhead and in tight places
- 3-1/4" Cut Capacity – cuts most common materials for Electrician, Plumber and Mechanical cutting applications. Single pass cut on 3" copper, 3" angle iron, 2-1/2" conduit
- Tool-Free Adjustable Material Shoe – quickly adjusts the shoe and allows

flush cuts when working with installed materials against walls and ceilings.

- LED Work Light – illuminates the cut line in dark areas.
- Blade Ejection System-Quickly change the blade by moving the material guide into the up position and depressing the blade ejection button.
- Drop Resistant Pulley Guard-Engineered geometries & high impact polymer.
- Cast Aluminum Gear Case-withstands jobsite abuse; maintains gear positioning
- Kit includes: (1) M18™ Cordless LITHIUM-ION Band Saw (2629-20), (2) M18™ XC High Capacity REDLITHIUM™ Battery (48-11-1828), (1) M18™ Lithium-Ion Battery Charger (48-59-1801), (1) Carrying Case

P/N 9702-91835 2629-22 Kit with AC/DC Charger

P/N 9703-51823 2629-20 Bare Tool Only

USA: 1-877-GO ALTEC
(1-877-462-5832)

www.alteconnect.com



BATTERY-POWERED TOOLS
Nothing But HEAVY DUTY®

M18 Fuel™ 1/2" Impact Wrench w/Pin

- Delivers a best-in-class **210 ft-lbs. and 2,520 in-lbs of torque** in a compact design
- The Milwaukee® POWERSTATE™ Brushless Motor provides increased efficiency, lasts longer and delivers maximum power
- REDLITHIUM™ XC 4.0 Battery Pack is the most durable pack on the market and provides up to 2X more run time
- REDLINK PLUS™ Electronic Intelligence allows the operator to choose between 3 fastening modes with Milwaukee's proprietary DRIVE CONTROL™ feature
- Utilizes a pin detent design for maximum socket retention
- Kit includes: (1) M18 FUEL™ 1/2" Impact Wrench w/ Pin (2655-20) (1) M18™ Lithium-Ion Battery Charger (48-59-1801), (2) M18™ REDLITHIUM™ XC 4.0 Extended Capacity Battery Pack (48-11-1840) (1) Belt Clip, (1) Carrying Case



NEW

P/N 9704-44188 2655-22 Kit with AC/DC Charger
 P/N 9704-44189 2655-20 Bare Tool Only

M18™ 5 3/8" Metal Saw Kit

- Milwaukee® designed impact mechanism: 350 ft. lbs. of torque
- Compact and light weight: 9 1/2" length and 7 lbs.
- Milwaukee® 4-Pole Frameless Motor: delivers maximum run-time
- 7/16" Hex Chuck: provides quick and easy accessory changes
- Kit includes: (1) M18™ 7/16" Hex High Torque Impact Wrench with Friction Ring, (2) M18™ XC High Capacity RED LITHIUM™ Batteries (48-11-1828), AC/DC 18V Charger (2710-20)



P/N 9701-89942 2665-22 Kit with AC/DC Charger
 P/N 9702-35487 2665-20 Bare Tool Only

**NEW AC/DC CHARGER
 & HANGAR RING**

M18™ 7/16" Hex High Torque Impact Wrench Kit

- Exclusive 4-Pole Frameless Motor delivers up to 35% more cutting power
- Compact, low-profile design for easy handling and increased control
- Extra-Large cut guide, impact resistant window and LED light for more accurate cuts
- Lightweight 5.8 lbs design for easier overhead cuts, less user fatigue
- Tool-Free Depth Adjustment quickly and easily adjusts cutting depth from 1/8"-2"
- Superior Cut Quality - 30T METAL TECH™ Carbide-Tipped blade produces cool, burr-free cuts through EMT, strut, threaded rod, sheet metal, angle iron and other ferrous materials.
- Kit includes: (1) M18™ Cordless LITHIUM-ION 5-3/8" Metal Saw (2682-20) (2) M18™ XC High Capacity REDLITHIUM™ Battery (48-11-1828), (1) M18™ Lithium-Ion Battery Charger (48-59-1801), (1) Contractor Bag



NEARLY ENDLESS USES

P/N 9703-42450 2682-22 Kit with AC/DC Charger
 P/N 9703-61502 2682-20 Bare Tool Only

USA: 1-877-GO ALTEC
 (1-877-462-5832)

www.alteconnect.com



SVP
SYSTEMS GROUP

Leading The Way Through Innovation And Quality



10-7000.12

Your laptop has a secure storage compartment and sturdy platform. holds three ring binders and hanging Pendaflex files. Drink holders accommodate extra large drinks, with the lower center of gravity helping to lessen spills. Dimensions: L 25.25" X W 11" X H 16" Recommended for: Ford Van lines, Chevy Silverado Series, Dodge Ram Series, Ford F Series & GMC Sierra Series

P/N 9703-98263 10-7000.12



10-CVAN12

3 compartments allow you to organize tools of your trade; Works great in Chevy Cargo Vans, Ford Cargo and Commercial Vans, GMC Passenger and Cargo Vans & Freightliner and International Professional Trucks; Compatible with our Pedestal Combo Packs (XTRPEDPACK & FUJZPED-PACK), Dimensions: L 22.75" X W 14" X H 21.5"

P/N 9703-98262 10-CVAN12



AEPTall12 & XTREME PEDESTAL COMBO



Highly versatile mobile workstation which allows the users to combine all of their electronics, writing table, storage, file management, switch boxes and radio. Compatible with any medium to large truck or van that has a removable center seat or has existing space between the drivers' and passenger seats. This is an

ergonomically designed mount that makes working mobile a productive advantage. Dimensions: L 25" X W 11" X H 22"

P/N 9703-98260 AEPTall12

10-Xtreme.12

Ergonomic Friendly Laptop Mount, Safe and Secure Technology System employs a pedestal mount and non-locking top. The Rugged's ergonomic features reduce strain on the neck, shoulders and back to contribute to the healthy well-being of mobile workers. Drill or No drill base.

P/N 9703-98257 Drill Mount

P/N 9703-98257 No Drill Mount With a VB with Riser

P/N 9703-98257 No Drill Mount With a VB without Riser

Rugged Fuzion

Extremely Heavy Duty Laptop Stand, widely used by utility company, service and public safety professionals that also need laptop theft prevention. Heavy duty performance with ergonomic benefits that increase productivity and provide a comfortable mobile computing experience. This Rugged Laptop Mount includes a locking top and locking pedestal, and may include a drill or no-drill base.

P/N 9703-98254 Drill Mount

P/N 9703-98255: No-Drill Mount

With a VB with Riser

P/N 9703-98256: No-Drill Mount

With a VB without Riser



USA: 1-877-GO ALTEC
(1-877-462-5832)

www.alteconnect.com





Y60LW HYPRESS™

Lightweight 60 Ton Hydraulic Crimp Tool

- Portable, lightweight design — 43 pounds
- Large jaw opening to accommodate large variety of conductor types
- Easy to carry with side lift handle
- Heavy duty hoisting loop
- Upper die cap securely locks to a positive detent position for safe operation
- Single acting ram with heavy duty return spring
- Single acting, lightweight 60 ton HYPRESS™ designed to install transmission and distribution connectors and sleeves
- Utilizes same “L” dies used in the BURNDY® Y60BHU and Y60BHUD.
- Protected male coupler has unrestricted access, making tightening easier
- The Y60LW is portable for easy maneuverability and will operate from any 10,000 psi hydraulic source with the proper oil capacity
- 5-year limited warranty.

P/N 9703-89692

Y60LW

Tool Head with Stand and Metal Case

P/N 9703-89693

Y60LWLS

Tool Head without Stand

MICRO-ADJUSTABLE TORQUE WRENCHES

“Click-Type”

- Ratcheting, calibrated, dual direction provides ease of use in the field
- Positive lock with spring-loaded pull-down lock ring assures the user that the torque setting is properly engaged and secure
- Scale settings on the BTW30150 and BTW150750 correspond to connector torque ratings (in-lb.) to save time with fast, accurate and easy-to-set values
- Quick release button for interchanging sockets with ease
- Lightly knurled handle offers an ergonomic, non-slip grip
- Rugged metal handle withstands the rigors of professional use
- Micro-adjustable design minimizes the need for several wrenches
- Individually serialized and calibrated to offer user confidence that the torque wrench will provide the required torque
- Made in the USA



P/N 9703-58669

BTW30150

30-150 in-lbs.

3/8" Drive

10.15" Length

P/N 9703-58673

BTW150750

150-750 in-lbs.

3/8" Drive

16" Length

P/N 9704-39469

BTW1575F12

15-75 ft-lbs.

1/2" Drive

16" Length

USA: 1-877-GO ALTEC
(1-877-462-5832)

www.alteconnect.com

HIW716MAG Impact Wrench

Rugged, **Powerful** Design
with over 500 ft-lbs of Torque

- Machined aluminum body provides optimized sealing
- Lightweight with ergonomic pistol grip handle
- Frictionless gerotor design for enhanced reliability
- Injection-molded replaceable pistol grips for increased thermal isolation

P/N 9703-89710 HIW716MAG



PATRIOT® PATMDCUT SERIES

IN-LINE® Cutting Tool - A Cut Above the Rest



- Cuts up to 500 kcmil Cu, 636 kcmil AAC, 556.5 ACSR (Dove)
- Latchless design provides for ease of cable loading to make mid-span cuts
- Cutter jaws compatible with existing BURNNDY® IN-LINE® Tools
- Cutter blades available for field replacement
- PATMDCUT-LI cuts 556 ACSR in under 3 seconds
- Kits include tool, cutting jaw assembly, charger, two batteries, and a case/canvas bag

P/N 9703-96487 PATMDCUT-LI Tool with Li-ion Battery

P/N 9703-96472 PATMDCUT-14V Tool with Ni MH Battery

P/N 9703-96491 PATJAWSCUT Jaw Assembly Only

USA: 1-877-GO ALTEC
(1-877-462-5832)

www.alteconnect.com



PATRIOT® PATMD6-LI SERIES

18 Volt Lithium-ion IN-LINE® Battery Tool

- 30 minute charger controls current, voltage and temperature to maximize battery life
- Interchangeable scissor-action crimp jaws allow for easier access in tight spaces
- Uses standard BURNDY® “W” and “X” dies
- Ergonomically balanced tool design eases operator fatigue
- Trigger-lock button to prevent accidental operation
- Large over-molded grip handle allows easier operation with gloves
- Comes with two (2) batteries, charger and tool bag and lanyard
- 3-year limited warranty on tool
- Lifetime warranty on INFINITY DRIVE® transmission



P/N 9703-58637	PATMD66LI	Tool with Only D3 Die Groove
P/N 9703-36938	PATMD68LI	Tool with D3 & O Die Grooves
P/N 9703-21846	PATMD6LI	Tool with D3 & BG Die Grooves
P/N 9703-89705	PATMD6KLI	Tool Accepts KEARNEY™ O Dies & BURNDY® W & X (KWADP req'd)

BATTERY, CHARGERS, CUTTING DIE, JAW ASSEMBLIES
Accessories suitable for use with the PATMD6-LI Series



*TOOLBAGMDLI does not include tool or charger

P/N 9702-97830	PATCHGRLI	120V-AC Battery Charger
P/N 9703-89706	PATCHGRLIDC	12/24V-DC Battery Charger
P/N 9702-97827	BAT18VLI	Extra Lithium-Ion Battery
P/N 9703-89707	TOOLBAGMDLI	Replacement Tool Bag
P/N 9702-35367	PATJAWSMD6	Jaw Assembly with D3 & BG
P/N 9703-90494	PATJAWSMD66	Jaw Assembly with D3 only
P/N 9702-03838	PATJAWSMD68	Jaw Assembly with D3 & O
P/N 9703-89708	PATJAWSMD6K	Jaw Assembly KEARNEY™ O Only
P/N 9703-89709	KWADP	Adapter to use BURNDY® W & X Dies for use with PATMD6KLI or PATJAWSMD6K P/N
9703-66495	W28K	Cutter Die Set for Cutting #4-4/0 Copper, Aluminum & ACSR

USA: 1-877-GO ALTEC
 (1-877-462-5832)

www.alteconnect.com





MAJESTIC

RELIABLE IN SAFETY

Hi-Vis 4-in-1 Bomber Jacket

ANSI Class 3 When Worn With Zip-Off Sleeves! **ANSI Class 2** When Wearing the Vest Only! **ANSI Class 3** Inner Layer Hi-Vis Fleece Jacket



A high quality, water resistant, high visibility arc rated bomber that features a removable fleece liner, removable sleeves, and has all the same safety features as the shell - All for one price!

- HRC2, ATPV 9 cal/cm2 (electric arc flash rating)
- Meets NFPA 70E, ASTM D6413, ASTM F1930, and ANSI 107-2010, Class 3.

FLOURESCENT YELLOW - Sizes XS – 7X

Majestic	ITEM	SMALL	MEDIUM	LARGE	X-LARGE	2X-LARGE
91437	JACKET	9704-39477	9704-39478	9704-39479	9704-39480	9704-39481
93417	OVERALL	9704-39488	9704-39489	9704-39490	9704-39491	9704-39492

Majestic	ITEM	3X-LARGE	4X-LARGE	5X-LARGE	6X-LARGE	7X-LARGE
91437	JACKET	9704-39482	9704-39483	9704-39484	9704-39485	9704-39486
93417	OVERALL	9704-39493	9704-39494	9704-39495	9704-39496	9704-39497

P/N 9704-39498 91996 Zip-Off Hat (One Size Fits All)

USA: 1-877-GO ALTEC
(1-877-462-5832)

www.alteconnect.com



TIRED OF BLAZING HOT FR CLOTHING?



BY MAJESTIC

TRY SOMETHING A LITTLE COOLER.

Blaze TEX® Vented Back FR Work Shirt

Using a FR modacrylic mesh under the arms and on the back, this shirt is a very comfortable option to wear in higher heat climates. The rest of the shirt is made with a 5.8 oz. 90% cotton 10% blend, which also provides for durability and breathability.



- HRC2, ATPV8.5 cal/cm2 (electric arc flash rating)
- Meets NFPA 1975-2004, NFPA 70E-2004, ASTM F 1506-02a, CAN/CGSB 155.20-2000, CAN/CGSB 155.22-97, et OSHA 29 CFR 1910.269, EN ISO 11611:2008, EN ISO 11612:2008, EN ISO 14116:2008 and UL certified NFPA 2112-2012 components.

USA: 1-877-GO ALTEC
(1-877-462-5832)

www.alteconnect.com

NAVY - Sizes XS – 7X

Majestic	SMALL	MEDIUM	LARGE	X-LARGE	2X-LARGE
95561	9704-39500	9704-39501	9704-39502	9704-39503	9704-39504

Majestic	3X-LARGE	4X-LARGE	5X-LARGE	6X-LARGE	7X-LARGE
95561	9704-39505	9704-39506	9704-39507	9704-39508	9704-39509

Experience the Difference...

LUG-ALL®

WEB STRAP RATCHET WINCH HOISTS



1 TON
SMALL FRAME

1-1/2 TON
SMALL FRAME



1-1/2 TON
MEDIUM FRAME

2 TON
MEDIUM FRAME



SMALL FRAME

Our small frame web strap hoists are lightweight and compact. With their one-hand portability, you can easily work in almost any position. Plus, their compact size gives you more elbow room around live wires. Perfect for tight spots, these pullers have all the features of our medium frame hoists.

MEDIUM FRAME

With longer handles, our medium frame web strap hoists provide you extra pulling strength for capacities from 1-1/2 to 2 tons. Like all LUG-ALL web strap pullers, these precision tools are beautifully crafted to deliver easy, trouble-free pulling of energized power lines.

5 HOOK STYLES

- A - Standard Latching Hooks
- B - Hot Stick Rings and Latching Hooks
- U - Gate Type Hooks
- UB - Gate Type Hooks and Hot Stick Rings
- HB - Hot Stick Rings and Hot Stick Hook Latches

ALTEC P/N	MODEL #	CAPACITY	DOUBLE PULL DISTANCE		CAPACITY	SINGLE PULL DISTANCE		STRAP LENGTH	HANDLE LENGTH	NET WEIGHT (LBS.)
			Min	Max		Min	Max			
9701-09686	2-A	1 Ton	21"	4'-5"	1/2 Ton	16"	9'-6"	10'	30"	10.25
9701-09688	2-B	1 Ton	21"	4'-5"	1/2 Ton	16"	9'-6"	10'	32"	10.5
9701-00363	2-U	1 Ton	24"	4'-4"	1/2 Ton	18"	9'-6"	10'	30"	10.75
9701-09689	2-UB	1 Ton	24"	4'-4"	1/2 Ton	18"	9'-6"	10'	32"	11
9701-09691	2-HB	1 Ton	24"	4'-4"	1/2 Ton	18"	9'-6"	10'	32"	11
9700-99327	25-A	1-1/2 Ton	21"	3'-5"	3/4 Ton	16"	7'-6"	8'	20"	10
9701-09693	25-B	1-1/2 Ton	21"	3'-5"	3/4 Ton	16"	7'-6"	8'	22"	10.5
9701-09695	25-U	1-1/2 Ton	24"	3'-4"	3/4 Ton	18"	7'-6"	8'	20"	10.5
9701-09697	25-UB	1-1/2 Ton	24"	3'-4"	3/4 Ton	18"	7'-6"	8'	22"	10.75
9701-09699	25-HB	1-1/2 Ton	24"	3'-4"	3/4 Ton	18"	7'-6"	8'	22"	11

ALTEC P/N	MODEL #	CAPACITY	DOUBLE PULL DISTANCE		CAPACITY	SINGLE PULL DISTANCE		STRAP LENGTH	HANDLE LENGTH	NET WEIGHT (LBS.)
			Min	Max		Min	Max			
9701-09701	3-A	1-1/2 Ton	27"	5'-1"	3/4 Ton	19"	11'-3"	11'-5"	30"	14
9701-09704	3-B	1-1/2 Ton	27"	5'-1"	3/4 Ton	19"	11'-3"	11'-5"	32"	14.5
9701-09712	3-U	1-1/2 Ton	30"	5'-0"	3/4 Ton	21"	11'-3"	11'-5"	30"	15
9701-09712	3-UB	1-1/2 Ton	30"	5'-0"	3/4 Ton	21"	11'-3"	11'-5"	32"	15
9701-09713	3-HB	1-1/2 Ton	29"	5'-0"	3/4 Ton	20"	11'-3"	11'-5"	32"	15.25
9701-09724	4-A	2 Ton	27"	4'-1"	1 Ton	19"	9'-4"	10'	36"	15.5
9701-09726	4-B	2 Ton	27"	4'-1"	1 Ton	19"	9'-4"	10'	38"	16
9701-00364	4-U	2 Ton	31"	4'-0"	1 Ton	21"	9'-4"	10'	36"	16
9701-09728	4-UB	2 Ton	31"	4'-0"	1 Ton	21"	9'-4"	10'	38"	16.5
9701-09730	4-HB	2 Ton	29"	4'-0"	1 Ton	20"	9'-4"	10'	38"	16.25

Specifications are subject to change without notice

USA: 1-877-GO ALTEC
(1-877-462-5832)

www.alteconnect.com



1-1/2 TON SMALL FRAME



Standard Version
With eye bolt and third hook

2 TON SMALL FRAME



Convertible Version
With bracket that eliminates need for third hook

LIGHTWEIGHT MODELS

We know that in the field, you want light, compact, and strong tools for the efficient pulling of electric lines. That's why we designed our newest web strap pullers to be the lightest, most compact ones ever.

Models 35 (1-1/2 ton) and 40 (2 ton) are available as both convertible or standard hoists. Like all LUG-ALL Lineman's Hoists, these new models meet rigorous ANSI/ASME B30.21 standards.

5 HOOK STYLES

- A - Standard Latching Hooks
- B - Hot Stick Rings and Latching Hooks
- U - Gate Type Hooks
- UB - Gate Type Hooks and Hot Stick Rings
- HB - Hot Stick Rings and Hook Latches

MODEL DESIGN

- C - Convertible Model

All models equipped with quick release pulley block* LUG-ALL grips, straps, and hooks are color coded by capacity

ALTEC P/N	MODEL #	CAPACITY	DOUBLE PULL DISTANCE		CAPACITY	SINGLE PULL DISTANCE		STRAP LENGTH	HANDLE LENGTH	NET WEIGHT
			Min	Max		Min	Max			
9704-39510	35-A	1-1/2 Ton	27"	7'-2"	3/4 Ton	19"	15'-4"	16'	30"	12.75
9704-39511	35-B	1-1/2 Ton	27"	7'-2"	3/4 Ton	19"	15'-4"	16'	32"	13
9704-39512	35-U	1-1/2 Ton	30"	7'-1"	3/4 Ton	21"	15'-4"	16'	30"	13.25
9704-39513	35-UB	1-1/2 Ton	30"	7'-1"	3/4 Ton	21"	15'-4"	16'	32"	13.25
9704-39514	35-HB	1-1/2 Ton	29"	7'-1"	3/4 Ton	20"	15'-4"	16'	32"	13.25
9703-06347	40-A	2 Ton	25"	4'-1"	1 Ton	19"	9'-4"	10'	36"	13.25
9704-39515	40-B	2 Ton	25"	4'-1"	1 Ton	19"	9'-4"	10'	38"	13.5
9704-39516	40-U	2 Ton	29"	4'-0"	1 Ton	21"	9'-4"	10'	36"	13.75
9704-39517	40-UB	2 Ton	29"	4'-0"	1 Ton	21"	9'-4"	10'	38"	13.75
9704-39518	40-HB	2 Ton	27"	4'-0"	1 Ton	20"	9'-4"	10'	38"	13.75
9704-39519	35-CA	1-1/2 Ton	19"	7'-6"	3/4 Ton	19"	15'-2"	16'	30"	12
9704-39520	35-CB	1-1/2 Ton	19"	7'-6"	3/4 Ton	19"	15'-2"	16'	32"	12.25
9704-39521	35-CU	1-1/2 Ton	21"	7'-5"	3/4 Ton	21"	15'-2"	16'	30"	12.5
9704-39522	35-CUB	1-1/2 Ton	21"	7'-5"	3/4 Ton	21"	15'-2"	16'	32"	12.5
9704-39523	35-CHB	1-1/2 Ton	21"	7'-5"	3/4 Ton	21"	15'-2"	16'	32"	12.5
9704-39524	40-CA	2 Ton	19"	4'-5"	1 Ton	19"	9'-2"	10'	36"	12.5
9704-39525	40-CB	2 Ton	19"	4'-5"	1 Ton	19"	9'-2"	10'	38"	12.75
9704-39526	40-CU	2 Ton	21"	4'-4"	1 Ton	21"	9'-2"	10'	36"	13
9704-39527	40-CUB	2 Ton	21"	4'-4"	1 Ton	21"	9'-2"	10'	38"	13
9704-39528	40-CHB	2 Ton	21"	4'-4"	1 Ton	21"	9'-2"	10'	38"	13

Specifications are subject to change without notice

USA: 1-877-GO ALTEC
(1-877-462-5832)

www.alteconnect.com



PROTECTIVE INDUSTRIAL PRODUCTS

INDUSTRIAL HAND PROTECTION

Polyurethane Grip Gloves with Dyneema® Stronger Than STEEL



- Gloves are washable, improving their longevity
- Seamless knit construction provides comfort without sacrificing dexterity
- Silicone free
- Color coded hems provide easy size identification
- Made from Spun Dyneema®, with Lycra® or Nylon-plated styles available
- Available with coated palm and knuckles or coated palm and finger tips, light or medium weight
- Superior puncture and abrasion resistance

Great White™, Gray Coating, EN Cut Level 3

P/N 9704-44090	19-D622-XS	P/N 9704-44093	19-D622-L
P/N 9704-44091	19-D622-S	P/N 9704-44094	19-D622-XL
P/N 9704-44092	19-D622-M	P/N 9704-44095	19-D622-XXL

All Gloves
from PIP Are Sold
By the Dozen

Polyurethane Grip Gloves with Kevlar®

- Kevlar® yarn is designed to be cut resistant
- Seamless knit construction protects hands without sacrificing comfort or dexterity
- Kevlar® will not melt, ignite or conduct electricity
- Polyurethane coated for added abrasion resistance
- Color coded hems for easy size identification
- Dupont Kevlar® brand fiber provides high tensile strength relative to its weight - up to five times stronger than steel

Kevlar® and Lycra blend, polyurethane coated palm and fingers, 15 gauge, light weight, EN Cut Level 2

P/N 9704-44096	09-K1250-S	P/N 9704-44099	09-K1250-XL
P/N 9704-44097	09-K1250-M	P/N 9704-44100	09-K1250-XXL
P/N 9704-44098	09-K1250-L		



G-Tek® MaxiFlex® Ultimate™



- Ultra-lightweight, knitwrist, Micro-Foam nitrile coated glove
- AirTech® technology delivers 360° breathability
- Optimized, controlled grip through our micro-cup finish
- Minimal palm thickness and thinner than most comparable gloves
- Class leading form, fit and feel, reducing hand fatigue and increased comfort
- DURAtch delivers best in class cost-to-wear through maximum durability

Black Micro-Foam Coated Palm and Finger Tips

P/N 9704-44101	34-874-XXS	P/N 9704-44104	34-874-M
P/N 9704-44102	34-874-XS	P/N 9704-44105	34-874-L
P/N 9704-44103	34-874-S	P/N 9704-44106	34-874-XL

USA: 1-877-GO ALTEC
(1-877-462-5832)

www.alteconnect.com





*Bringing the Best
of the World to You!®*

Hi-Vis Coated Acrylic Glove ~Latex MicroFinish® Grip

- Seamless construction for comfortable fit
- Excellent thermal insulation
- Quickly evaporates moisture from the skin
- Extra softness for non-chafing comfort
- Excellent launderability characteristics

Hi-Vis Orange Acrylic Terry Shell, Brown MicroFinish Grip

P/N 9704-44107 41-1400-S P/N 9704-44110 41-1400-XL
 P/N 9704-44108 41-1400-M P/N 9704-44111 41-1400-XXL
 P/N 9704-44109 41-1400-L



High Performance Utility Glove by Maximum Safety®



- FR-treated synthetic leather
- Wing thumb and reinforced palm
- Lined with Kevlar brand fiber
- Ideal for hot, heavy material handling, stamping, grinding, cut-resistance, and multi-task applications where welding could be part of the task

**All Gloves
from PIP Are Sold
By the Dozen**

P/N 9704-44112 73-1703-S P/N 9704-44115 73-1703-XL
 P/N 9704-44113 73-1703-M P/N 9704-44116 73-1703-XXL
 P/N 9704-44114 73-1703-L P/N 9704-44117 73-1703-XXXL

G-Tek® Maxiflex Endurance™

- Ultra-lightweight, knitwrist, Micro-Foam nitrile coated glove
- AirTech® technology delivers 360° breathability
- Raised Micro Dots to increase durability and cushioning
- Minimal palm thickness and thinner than most comparable gloves
- Class leading form, fit and feel, reducing hand fatigue and increased comfort
- 25% thinner than most comparable gloves



Black Micro-Foam Coated Palm, Full Fingers, and
3/4 Knuckles with Micro Dots

P/N 9704-44118 34-845-XXS P/N 9704-44121 34-845-M
 P/N 9704-44119 34-845-XS P/N 9704-44122 34-845-L
 P/N 9704-44120 34-845-S P/N 9704-44123 34-845-XL

Journeyman & Journeyman-KV by Maximum Safety®

- General goatskin leather; split goatskin leather reinforced fingertips
- Thermo Plastic Rubber molded knuckle guards; reflective knuckle tape
- Nylon spandex fabric
- Internal foam padded palm
- Sandy PVC thumb crotch and thumb reinforcement
- Micro cotton thumb
- Hook and loop closure patch; easy-on, easy-off design
- Journeyman-KV is lined with Kevlar® brand fiber

Journeyman

P/N 9704-44164 120-4200-S P/N 9704-44169 120-4100-S
 P/N 9704-44165 120-4200-M P/N 9704-44170 120-4100-M
 P/N 9704-44166 120-4200-L P/N 9704-44171 120-4100-L
 P/N 9704-44167 120-4200-XL P/N 9704-44172 120-4100-XL
 P/N 9704-44168 120-4200-XXL P/N 9704-44173 120-4100-XXL

Journeyman-KV



**Attec
Supply**

USA: 1-877-GO ALTEC
(1-877-462-5832)

www.alteconnect.com



PROTECTIVE INDUSTRIAL PRODUCTS

bolle
SAFETY

- 2.2mm high impact polycarbonate lens, anti-fog/anti-scratch coated on both sides
- Close fitting (8 base), dual lens with distortion-free viewing and superior optical quality
- Rubber temple tips and non-slip rubber nose pads for optimal fit and comfort
- 99.99% UVA and UVB light absorption

YODOO®



P/N 9704-44174 253-VD-40153
Polarized Brown Lens, Shiny Brown Polycarbonate Frame,
Anti-Scratch, Anti-fog Lens

P/N 9704-44175 253-VD-40152
Smoke Lens, Shiny Black Polycarbonate Frame,
Anti-Scratch, Anti-fog Lens

SHADOW®

P/N 9704-44176 253-SW-40060
Smoke Lens, Shiny Black Polycarbonate Frame,
Anti-scratch, Anti-fog Lens

P/N 9704-44177 253-SW-40061
Polarized Gray Lens, Shiny Black Polycarbonate
Frame, Anti-scratch, Anti-fog Lens

P/N 9704-44178 253-SW-40159
Red Mirror Lens, Shiny Black Polycarbonate
Frame, Anti-scratch Lens



HUSTLER®



P/N 9704-44179 253-HR-40149
Smoke Lens, Shiny Black Polycarbonate Frame,
Anti-scratch/Anti-fog Lens

P/N 9704-44180 253-HR-40150
Gray Polarized Lens, Shiny Black Polycarbonate
Frame, Anti-fog/Anti-scratch Lens

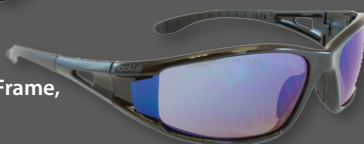
P/N 9704-44181 253-HR-40151
Blue Mirror Lens, Shiny Black Polycarbonate
Frame, Anti-fog/Anti-scratch Lens

LOWRIDER®

P/N 9704-44182 253-LW-40052
Smoke Lens, Shiny Black Polycarbonate Frame,
Anti-scratch, Anti-fog Lens

P/N 9704-44183 253-LW-40053
Polarized Gray Lens, Shiny Black Polycarbonate
Frame, Anti-scratch, Anti-fog

P/N 9704-44184 253-LW-40156
Blue Mirror Lens, Shiny Black Polycarbonate
Frame, Anti-scratch

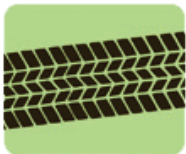


USA: 1-877-GO ALTEC
(1-877-462-5832)

www.alteconnect.com



SVE



When You Have To Get In ~ SVE Offers Everything You Need

PORTABLE ROADWAY SYSTEMS, INC.

MUD-TRAKS® Portable Roadway Systems

- Most aggressive traction surface ~ Strongest “man-handlable” mat in the industry
- Super strong, light weight fiberglass panels; textured on both sides for traction
- Steel Connectors available; overlap joint for strongest connection
- Off-white color keeps them cool in summer heat, no damage to lawns
- Rope handles offer easy handling; Fit in the back of a pick up truck
- Rigid panel reduces 75 psi tire load to 11 psi; ground PSI
- Non-electrical conductive, great for power line work
- Not affected by water, gas, oil or chemicals

OFF-ROAD SUPER LITE MATS

Vehicle Weight (under 60,000 lbs).

P/N 9704-44190 N4572HDSL (45" x 72" x 3/8") 56 lbs.

P/N 9704-44191 N4596HDSL (45" x 96" x 3/8") 75 lbs.

OFF-ROAD SUPER MATS

Vehicle Weight (up to 120,000 lbs).

P/N 9704-44192 N3272HDS (32" x 72" x 0.40") 42 lbs.

P/N 9704-44193 N3296HDS (32" x 96" x 0.40") 55 lbs.

P/N 9704-44194 N4572HDS (45" x 72" x 0.40") 72 lbs.

P/N 9704-44195 N4596HDS (45" x 96" x 0.40") 95 lbs.



TRAKMAT® Ground Cover Mats

- No ruts, damaged lawn, or weather delays
- Cylinder Tread Design for superior surface traction
- Corner holes for connectors
- Tough 1/2" thick polyethylene
- Light Color (keeps mat cool in summer to prevent heat build-up and burnt grass) or Utility Black.
- One side smooth when you need to protect surfaces from potential markings or indentations that could be caused by the traction cleat pattern
- 6 Year Limited Manufacturer's Warranty

Light Color	Utility Black				
9704-44197	9704-44201	TM4496	44.5" X 8'	78 lbs.	
9704-44198	9704-44202	TM3696	36" X 8'	64 lbs.	
9704-44199	9704-44203	TM3672	36" X 6'	51 lbs.	
9704-44200	9704-44204	TM2296	22.2" X 8'	39 lbs.	

Outrigger Pads

- Super Strong Pads; No water absorption
- Lightweight, composite fiberglass with rope handles
- Non-skid surface, superior traction, enhanced finish
- 1 year Limited Manufacturer's Warranty

Small Backyard Units

P/N 9704-44208 1616HD 16" X 16' X 5/16") 12 Lbs.

Vehicles Up To 35,000 Lbs.

P/N 9704-44209 1818 Single Rear Axle 18" X 18" X 0.60" 12 Lbs.

P/N 9704-44210 2424 Single Rear Axle 24" X 24" X .60" 20 Lbs.

Vehicles Up To 70,000 Lbs.

P/N 9704-44211 3232 Tandem Rear Axle 32" X 32" X 0.60" 34 Lbs.

Vehicles Up To 100,000 Lbs.

P/N 9704-44212 4545 Tandem Rear Axle 45" X 45" X 0.60" 73 Lbs.



USA: 1-877-GO ALTEC
(1-877-462-5832)

www.alteconnect.com

ALTEC SUPPLY TOOL APRONS

- 24" x 30" 16 pocket vinyl aerial aprons
- Large, reinforced pockets allow workers to carry their tools with them while working
- Features: (5) socket holders
(4) tool pockets
(3) nut and bolt holders
(2) plastic-reinforced bit holders
(1) Hammer loop
(1) Plastic-reinforced tool pouch
(1) Plastic-reinforced cable
(1) Bolt cutter pocket



P/N 9000-50945 Yellow Tool Apron

P/N 9702-42311 Black Tool Apron

P/N 9703-53123 Yellow Tool Apron with Magnetic Strip

ALTEC SUPPLY TOOL HOSE With Quick Disconnects



- Twin line, certified 3/8" non-conductive tool hose assembly
- HTMA quick disconnects attached each end

P/N 9702-90038 8' Length

P/N 9702-08915 10' Length

Please contact your Altec Supply representative at 1-877-GO ALTEC (1-877-462-5832) for special order lengths.

ALTEC SUPPLY Stringing Block

- Latch is positive locking and can be opened and closed easily with a hot stick
- Frame is "I-Beam" design and will support the rated load with the gate open
- Weighs 10 lbs.

P/N 9703-48641 Stringing Block

P/N 9703-48647 CrossArm Bracket

P/N 9703-48648 Wide Yoke

P/N 9703-48649 Clevis Yoke



ALTEC SUPPLY Cable Crimper - Fixed Die

- Designed to crimp #2, #4, and #6 connectors safely and easily
- Features extra-heavy duty fiberglass handles
- Molded rubber grip handles are ergonomically designed to fit the contour of the human hand for increased comfort and slip-resistance
- Rust-resistant
- Weight: 3.8 lbs.
- Length: 21.42"

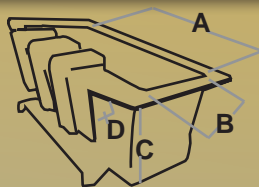
P/N 9701-82291



USA: 1-877-GO ALTEC
(1-877-462-5832)

www.alteconnect.com

When tools are stored in these polyethylene tool trays, work is easier and more efficient. Made from high-density polyethylene, these trays are impervious to hydraulic oil, motor oil, and a broad range of chemicals. These trays are also cold resistant and UV protected. The trays have been designed to fit most platforms with or without a liner. Several sizes and shapes are available.



ALTEC SUPPLY Rectangular Tool Tray with Optional Pocket Pouch

- 18.5" (a) x 7.5" (b) x 8.25" (c) x 2 3/4" (d)
- Made from high-density polyethylene
- Cold-resistant and UV protected
- Designed to fit most platforms with or without a liner

P/N 9703-21837 Without Pockets, Outside Mount

P/N 9703-21843 7 Pocket Pouch, Outside Mount

P/N 9703-21844 9 Pocket Pouch, Outside Mount

P/N 9703-53135 Magnetic Strip, Outside Mount

ALTEC SUPPLY Double Tool Tray with Outside Mount

- Dimensions: 20" (a) x 14" (b) x 8" (c) x 2 1/2" (d)
- Double tool tray with outside mount

P/N 9703-47486

ALTEC SUPPLY Deep Tool Tray with Outside Mount

- 15" (a) x 7" (b) x 17" (c) x 2 1/2" (d)
- Deep tool tray with outside mount

P/N 9703-47487

ALTEC SUPPLY Splicer Tool Tray with Outside Mount

- 19" long, 8" wide, 8" deep
- Designed for aerial life buckets
- Use with all types of rotating splicer baskets

P/N 9703-47488



Aerial "S" Hooks

- Fits most platforms with liners
- Molded from a mixture of plastics and nylon that give them high breaking strength and excellent cold resistance

- Holds platform accessories on both the inside and outside of the platform
- Virtually indestructible if used in normal conditions
- Stretches horizontally without breaking at 1,000 lbs.
- Retain physical properties up to 200° F and as low as -40° F

P/N 9000-01006 (Sold by the Pair)



5610 Corporate Drive
St. Joseph, MO 64507

Altec Supply Exclusives!

See pages 38-39 for some of Altec Supply's most popular products that are made exclusively for Altec! Please contact your Altec Supply Account Manager or call **1-877-GO ALTEC (1-800-462-5832)** for additional information!