

ECHELON

DIAMOND SERIES



FIREMAGIC[®]

SAVOR THE MOMENT™

WHY FIRE MAGIC PREMIUM GRILLS?

Welcome into your home the world's finest outdoor grill. American designed and manufactured, Fire Magic Premium Grills and accessories have combined sublime craftsmanship and superior technology to set the industry standard for more than 70 years.

It's an unmatched experience that begins with a superior design and solid stainless steel construction. Lift the gleaming hood, engineered to reflect heat onto the entire cooking surface, and experience all the brilliance inside. Truly, there is not a more inspired, better-made grill on the market today- from the exclusive flavor grids to the lifetime guaranteed cast stainless steel burner. Every Fire Magic is designed and built to be the centerpiece of your outdoor lifestyle. Whether you choose a beautiful built-in or one of our impressive stand-alone grills, you'll savor every moment with Fire Magic.

CRAFTED WITH PRIDE  IN THE USA

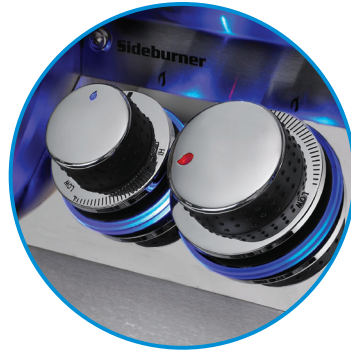
ECHELON
DIAMOND SERIES

FEATURED HIGHLIGHTS



CONTOURED CONTROL PANEL

Like a luxury motorcar, the contoured face of the Echelon Diamond Series, with rounded edges and mirrored highlights, hints at the high performance and exquisite craftsmanship under the hood.



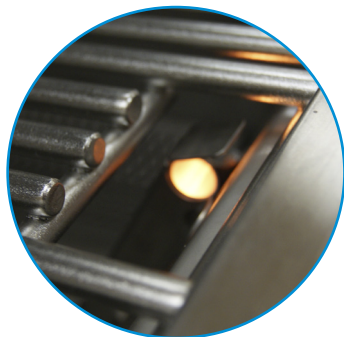
BACKLIT SAFETY KNOBS

Backlit grill knobs feature blue LED bezels, casting a luminous glow against the reflective stainless steel. A flame icon in the knob changes from blue to red as the knob is turned on. The red flame's intensity grows brighter on high and dimmer on low, visually signifying the burner's setting. and lets you know when gas is flowing at a glance. This important safety feature is only found on Fire Magic Diamond Series Grills.



ELECTRONIC DIGITAL THERMOMETER

State of the art electronic thermometer display is loaded with an impressive array of features such as a timer, digital temperature grilling guide, choice of backlit display colors, high temperature limit set and oven light switch. Powered by 110V, batteries are not required.



HOT SURFACE IGNITION

The hot surface electronic ignition system is the most advanced and reliable lighting system available. Simply push in the control knob to activate the hot surface, turn up the gas and light your grill.



HALOGEN LAMPS

Halogen lamps shine brightly and are thoughtfully angled for ease of evening grilling. The absence of screws in our design allows for quick cleaning with a damp sponge. Bulbs are easily replaceable. Dual lamps in 660 and 790 models, triple lamps in 1060 model.



WOOD CHIP SMOKER

Fire Magic's wood chip smoker features a stainless steel wood chip drawer with its own 3,000 BTU dedicated burner. Add fruit juice, wine, or simply water to your choice of mesquite, oak, cherry or other woods for grilled foods enveloped in a delicate smoky flavor.

FIREMAGIC

| **BUILT-IN COLLECTION**

Upgrade to
an Infrared
Burner for
FREE!



ECHELON
DIAMOND SERIES

» **ADDITIONAL ECHELON DIAMOND SERIES FEATURES:**

- Powered by exclusive cast stainless steel “E” burners - guaranteed for life
- Most BTUs & heat per sq. in. - Heats fast--stays hot!
- Deeper firebox is 22” deep and 12” high
- Feather-Lite, easy-lift oven hood with spring assist
- Master Power Switch turns off electrical system when not in use
- Recessed back burner for larger size rotisserie cooking
- Built-in storage brackets for rotisserie spit rod
- 16 gauge stainless steel flavor grids are engineered for durability and even heat distribution
- Heat zone separators isolate cooking zones so food in each zone may be grilled at different temperatures
- Integral oven warming rack for light cooking or warming foods
- Customized stainless steel name plaque to personalize your grill
- Grill is field convertible natural gas/propane
- Optional Magic View Window to check on food without lifting hood
- Optional Remote Receiver displays temperature readings from approximately 50 feet from the grill
- Matching Power Burner (shown in photo above) and Double Side Burner available

E1060i-4E1N

COOKING SURFACE: 1056 sq. in. [48” X 22”]
CUT-OUT: 50”w x 23½”d x 12”h
BTU’s: 145,000

E790i-4E1N

COOKING SURFACE: 792 sq. in. [36” X 22”]
CUT-OUT: 37”w x 23½”d x 12”h
BTU’s: 122,000

E660i-4E1N

COOKING SURFACE: 660 sq. in. [30” X 22”]
CUT-OUT: 31¼”w x 23½”d x 12”h
BTU’s: 97,000





ECHELON
DIAMOND SERIES

» STAND ALONE GRILLS ALSO INCLUDE:

- All Stainless Steel cart with insulated storage doors
- Polished rounded corners for added style and safety
- Retractable tool holder and paper towel holder
- Sliding propane cylinder tray with latch on propane models
- Side burner options are available shelf with polished edges and side handles
- Four heavy-duty locking swivel casters
- Two 110V electrical outlets w/ 8' heavy duty extension cord
- 10' quick disconnect hose for natural gas or hose and regulator for propane
- All Stand Alone carts are pre-assembled

E1060s-4E1N-51-W

COOKING SURFACE: 1056 sq. in. [48" X 22"]
BTU's: 205,000



SHOWN WITH POWER BURNER

E790s-4E1N-71

COOKING SURFACE: 792 sq. in. [36" X 22"]
BTU's: 152,000



SHOWN WITH DOUBLE SIDE BURNER

E660s-4E1N-62

COOKING SURFACE: 660 sq. in. [30" X 22"]
BTU's: 112,000



SHOWN WITH SINGLE SIDE BURNER