

iCLASS Cards

HID GLOBAL CORPORATION



FEATURES

- 13.56 MHz read/write contactless smart-card technology, providing high-speed, reliable communications with superior data integrity
- The ability to store biometric templates and useful data using read/write capabilities
- Communications between card and reader that include high security with mutual authentication, encrypted data transfer, and 64 bit diversified keys for read/write
- Advanced key-management systems to reduce the risk of compromised data or duplicated cards
- Supports all existing HID card formats, including Corporate 1000
- The ability to factory- or field-program any existing HID format into the secure HID access control application area
- A choice of a 2k bits (256 bytes) or 16k bits (2k bytes) configuration
- All 16k bits (2k bytes) iCLASS credentials offer a choice of 2 or 16 application areas
- Lifetime warranty

For ordering information, please see the HID "How to Order Guides" (HTOG) at www.hidcorp.com/htog or call your sales representative.

Anixter No.	Vendor No.	Description
258705	2000	iCLASS Card, 2k bit
258706	2001	iCLASS card, 16k bit memory with two application areas
258707	2002	iCLASS Card, 16k bit, 16 application areas
258708	2020	iCLASS Prox Card, 2k bit
258709	2021	iCLASS Prox card, 16k bit memory with two application areas
258710	2022	iCLASS Prox Card, 16k bit, 16 application areas
258711	2050	iCLASS Key, 2k bit
258712	2051	iCLASS Key, 16k bit memory with two application areas
258713	2052	iCLASS Key, 16k bit, 16 application areas
258714	2060	iCLASS Tag, 2k bit memory
258715	2061	iCLASS Tag, 16k bit memory with two application areas
258716	2062	iCLASS Tag, 16k bit, 16 application areas

iCLASS ISO cards are compatible with Fargo and other leading card-printer manufacturers for ID-card personalization. Purchase genuine HID card accessories (lanyards, clips and card holders) to assure a safe and secure ID card presentation.

iCLASS Clamshell Card

HID GLOBAL CORPORATION



Low-cost, highly durable read/write contactless smart card. HID's clamshell-style card is constructed of an acrylonitrile butadiene styrene (ABS) shell and polyvinyl chloride (PVC) cover label that is strong, flexible and resistant to cracking and breaking. Additionally, the card can be custom printed utilizing most direct image printers offering convenient on-site photo-identification capabilities.

The iCLASS Clamshell Card is based on HID's iCLASS 13.56 MHz read/write contactless smart-card technology platform that meets ISO 15693 standards and includes a highly secure, encrypted 64-bit diversified-key format for mutual authentication. For even higher security, the card data can be protected with DES or triple-DES encryption. Available in 2k bit (256 byte), dual-application area format, the iCLASS Clamshell Card has an HID standard access control area and one additional area for applications including time and attendance and biometric identification. Extremely consistent read ranges are unaffected by body shielding or variable environmental conditions even when close to keys and coins. The iCLASS Clamshell Card features a lifetime warranty.

FEATURES

- 13.56 MHz read/write contactless smart-card technology provides high-speed, reliable communications with high data integrity
- Provides a cost-effective way to improve the security of your access control installation
- Constructed with ABS shell and PVC cover label, offering durable packaging
- Available in 2k bit (256 byte), two-application-area configuration only
- Provides the HID standard access control application area and one other application area for user customization
- iCLASS technology ensures high security with mutual authentication, encrypted data transfer, and 64-bit diversified keys for read/write capabilities
- Any existing HID format can be factory- or field-programmed into the secure HID access control application area
- Meets ISO 15693 standard for contactless communications
- A PVC overlay allows for on-site photo ID production using most direct image printers

For ordering information, please see the HID "How to Order Guides" (HTOG) at www.hidcorp.com/htog or call your local sales representative.

Anixter No.	Vendor No.	Description
320816	2080	2k bit (256 byte) card

Door Locking Hardware

HID Global

iCLASS Key

HID GLOBAL CORPORATION



13.56 MHz contactless smart key.

FEATURES

- The power of iCLASS in a convenient, pocket-size keyfob
- The iCLASS 13.56 MHz read/write contactless smart-key technology provides high-speed, reliable communications with high data integrity
- iCLASS technology ensures high security with mutual authentication, encrypted data transfer and 64-bit diversified keys for read/write capabilities
- Any existing HID format can be factory- or field-programmed into the secure HID access control application area
- Available in 2k bit (256 byte), 16k bit (2k byte) or 32k bit (4k byte) configurations

Anixter No. Vendor No. Description

258711	2050	iCLASS Key, 2k bit
258712	2051	iCLASS Key, 16k bit memory with two application areas
258713	2052	iCLASS Key, 16k bit, 16 application areas

iCLASS Tag with Adhesive Back

HID GLOBAL CORPORATION



Upgrade tag for Magstripe and barium ferrite cards.

FEATURES

- Provides the convenience of HID's iCLASS contactless read/write technology in a small disk-shaped package
- Seamlessly upgrade from magnetic stripe, barium ferrite, or Proximity technologies by adhering the tag to an existing access card
- Allows users to easily and cost-effectively turn a plastic ID badge or contact smart chip card into a contactless smart card
- Attaches easily to cell phones, PDAs and other nonmetallic objects

Anixter No. Vendor No. Description

258714	2060	iCLASS Tag, 2k bit memory
258715	2061	iCLASS Tag, 16k bit memory with two application areas
258716	2062	iCLASS Tag, 16k bit, 16 application areas
357928	2063	iCLASS Tag, 32k bit (4k byte) 16k/2 + 16k/1
357929	2064	iCLASS Tag, 32k bit memory, 16k/16 + 16k/1

ProxPass

HID GLOBAL CORPORATION



Active tag for hands-free vehicle-access control.

FEATURES

- Provides up to eight-foot read range
- Compatible with MaxiProx reader and all HID card formats
- Two- to five-year battery life, depending on usage
- Available with replaceable batteries
- Dimensions: 2.625 in. H x 3.625 in. W x 0.30 in. D (6.75 cm x 9.25 cm x 0.76 cm)

For ordering information, please see the HID "How to Order Guides" (HTOG) at www.hidcorp.com/htog or call your sales representative.

Anixter No.	Vendor No.	Description
243267	1351	Active vehicle tag

ISOProx II

HID GLOBAL CORPORATION



125 kHz thin Proximity card.

FEATURES

- Combines Proximity technology with photo-identification capability on a single card
- Graphics-quality surface for use with direct image printers
- Same size and thickness as a standard credit card
- Vertical or horizontal slot punch capability
- Lifetime warranty

For ordering information, please see the HID "How to Order Guides" (HTOG) at www.hidcorp.com/htog or call your sales representative.

Anixter No.	Vendor No.	Description
211609	1386LGGMN	Thin Proximity Card

Compatible with Fargo and other leading card-printer manufacturers for ID card personalization. Purchase genuine HID card accessories (lanyards, clips and card holders) to assure a safe and secure ID card presentation. Contact your sales representative for more details.

DuoProx II

HID GLOBAL CORPORATION



125 kHz thin Proximity card with mag stripe.

FEATURES

- Provides the same features and dimensions as the ISOProx II card combined with magnetic-stripe technology
- Thin enough to be used with standard swipe or insert readers

For ordering information, please see the HID "How to Order Guides" (HTOG) at www.hidcorp.com/htog or call your sales representative.

Anixter No.	Vendor No.	Description
241605	1336LGGMN	DuoProx II dual technology card

Compatible with Fargo and other leading card-printer manufacturers for ID card personalization. Purchase genuine HID card accessories (lanyards, clips and card holders) to assure a safe and secure ID card presentation. Contact your sales representative for more details.

SMART ISOProx II and SMART DuoProx II

HID GLOBAL CORPORATION



125 kHz Proximity with optional contact smart-chip module.

FEATURES

- Allows an optional contact smart-chip module to be embedded in an ISO-thickness Proximity card for multitechnology applications
- Graphics quality surface for use with direct-image printers
- Smart DuoProx II includes magnetic stripe
- Same size and thickness as a standard credit card

For ordering information, please see the HID "How to Order Guides" (HTOG) at www.hidcorp.com/htog or call your sales representative.

Anixter No.	Vendor No.	Description
241611	1397	Smart ISOProx II
243266	1398	Smart DUOProx II

Compatible with Fargo and other leading card-printer manufacturers for ID card personalization. Purchase genuine HIDcard accessories (lanyards, clips and card holders) to assure a safe and secure ID card presentation. Contact your sales representative for more details.

ProxCARD II

HID GLOBAL CORPORATION



125 kHz value-priced Proximity card.

FEATURES

- Price competitive with all other card technologies
- Thin enough to carry in a wallet or purse
- Durable packaging that offers a consistent read range
- PVC overlay allows for on-site photo ID
- Lifetime warranty

For ordering information, please see the HID "How to Order Guides" (HTOG) at www.hidcorp.com/htog or call your sales representative.

Anixter No.	Vendor No.	Description
241604	1326LMSMV	Standard prox card

ProxKey II

HID GLOBAL CORPORATION



125 kHz keyfob.

FEATURES

- Place on a key ring for convenient entry
- Universal compatibility with all HID Proximity readers
- Provides external number for easy ID and control
- Can be programmed with any standard HID Proximity format
- Lifetime warranty

For ordering information, please see the HID "How to Order Guides" (HTOG) at www.hidcorp.com/htog or call your sales representative.

Anixter No.	Vendor No.	Description
241606	1346	Proximity access keyfob

Door Locking Hardware

HID Global

MicroProx Tag

HID GLOBAL CORPORATION



The MicroProx Tag provides the convenience of HID's Proximity technology in a small disk-shaped transponder. Simply attach the adhesive-backed tag to any nonmetallic card or device and you instantly have a Proximity card.

FEATURES

- Seamlessly upgrade from Wiegand, magnetic-stripe or barium ferrite technologies by simply adhering the tag to your existing access card
- Easily and cost-effectively turn a plastic ID badge or contact smart-chip card into a Proximity credential
- Lifetime warranty
- Add Proximity access control capability to users' cell phones, PDAs and other similar nonmetallic devices
- Experience the convenience of Proximity without the expense of rebadging

For ordering information, please see the HID "How to Order Guides" (HTOG) at www.hidcorp.com/htog or call your sales representative.

Anixter No.	Vendor No.	Description
258682	1391	MicroProx Tag

iCLASS Long-Range Reader

HID GLOBAL CORPORATION



HID's R90 iCLASS Long-Range Reader is ideal for installations incorporating parking control and long read-range applications packaging all the electronics in one rugged, attractive and easy-to-install housing. Using the 13.56 MHz technology platform, the R90 read-only contactless smart-card long-range reader enables a complete iCLASS installation from the parking lot to building and door access with the power and heightened security of encryption and mutual authentication, making it ideal for access control applications.

FEATURES

- Long read-range distance (up to 18 inches or 45 centimeters)
- Auto-tuning for more consistent read ranges
- Reads all HID iCLASS and ISO 15693 compatible (CSN) credentials

- Use one reader to read standard Proximity format data from HID iCLASS credentials
- With a multicolor LED and beeper which can be controlled internally or at host
- Two R90 units can operate one meter apart for "HI-LO" truck and car installations
- Wiegand output easily interfaces with most existing Wiegand protocol access control panels
- Lifetime warranty

For ordering information, please see the HID "How to Order Guides" (HTOG) at www.hidcorp.com/htog or call your sales representative.

Anixter No.	Vendor No.	Description
320818	6150	Long-range reader with Wiegand output

iCLASS RK40 Keypad Reader

HID GLOBAL CORPORATION



13.56 MHz wall switch keypad smart-card readers.

FEATURES

- Upgrading is completely transparent since the same Prox format and user-identification numbers are brought across to your future iCLASS credentials, including HID Corporate 1000 formats
- All RF data transmission between the card and reader is encrypted using a secure algorithm
- iCLASS is based on international ISO interoperability standards providing compatibility with many popular cards
- Security 64-bit authentication keys are extremely secure. Readers and cards require matching keys to function
- All RF data transmission between the card and reader is encrypted, using a secure algorithm
- All cards are shipped with unique diversified keys and readers are shipped with compatible keys
- Custom keys provide the highest level of security. Cards and readers are uniquely matched to individual sites or customers and are noninterchangeable
- Lifetime warranty

Anixter No.	Vendor No.	Description
270464	6130	iCLASS RK40 reader keypad

iCLASS R40 Readers

HID GLOBAL CORPORATION



13.56 MHz wall-switch smart-card readers.

FEATURES

- Upgrading is completely transparent since the same Prox format and user-identification numbers are brought across to your future iCLASS credentials, including HID Corporate 1000 formats
- All RF data transmission between the card and reader is encrypted using a secure algorithm
- iCLASS is based on international ISO interoperability standards providing compatibility with many popular cards
- Security 64-bit authentication keys are extremely secure. Readers and cards require matching keys to function
- All RF data transmission between the card and reader is encrypted, using a secure algorithm
- All cards are shipped with unique diversified keys and readers are shipped with compatible keys
- Custom keys provide the highest level of security. Cards and readers are uniquely matched to individual sites or customers and are noninterchangeable
- Lifetime warranty

Anixter No.	Vendor No.	Description
258686	6120	iCLASS R40 reader

bioCLASS RWKL575 Reader

HID GLOBAL CORPORATION



13.56 MHz bioCLASS biometric keypad contactless smart-card reader.

FEATURES

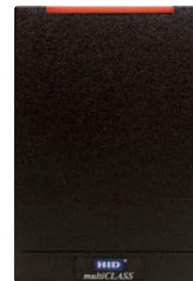
- Users can choose the level of security to meet their needs: card and PIN; card and fingerprint; card, PIN and fingerprint
- The finger pad at the bottom center of the biometric unit offers ease-of-use for either right- or left-handed enrollment
- The location of the finger pad is compliant with ADA standards

- The bioCLASS RWKL575 read/write contactless smart-card reader with keypad, LCD display and fingerprint biometric verification
- LCD display provides feedback on user finger placement and defines custom menu keys
- Fingerprint templates are stored on the iCLASS card and not in the reader, resulting in increased security, faster throughput, easier system management, lower costs for the biometric reader and reduced concerns over individual privacy
- HID's offerings encompass the industry's broadest range of open-standard contactless smart-card products, available from over 40,000 resellers worldwide

Anixter No.	Vendor No.	Description
332465	6171	RWKL550 reader/writer, with keypad with LCD display
332467	6181	RWKL575 read/write keypad with LCD display and fingerprint biometric verification
332468	6190	BI0500 - bioCLASS fingerprint biometric module addition
332470	6251	CP575 - bioCLASS enrollment reader/writer with software

RP40 multiCLASS Reader

HID GLOBAL CORPORATION



Multitechnology Prox and iCLASS reader.

FEATURES

- Simple migration over time while incorporating the use of multiple-card technologies within a single building or across multiple facilities using the most popular Proximity technologies to iCLASS
- Enhanced security through mutual authentication and data encryption
- Open-architecture design that allows project specific formats and keys powerful options
- Provides flexible options for processing multitechnology cards and configuring the reader's audio/visual characteristics
- All HID card formats carry over
- Reads: 125 kHz - HID Proximity and AWID, 13.56 MHz - iCLASS, DESFire - ISO 15693 CSN (MyD, I Code, Tag It), ISO 14443A CSN (MIFARE)
- Lifetime warranty

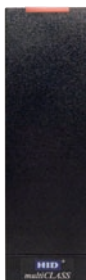
Anixter No.	Vendor No.	Description
372403	6125B	Wiegand
372404	6213B	Clock-and-Data
372405	6124B	Transit

Door Locking Hardware

HID Global

RP15 multiCLASS Reader

HID GLOBAL CORPORATION



Multitechnology Prox and iCLASS mullion-mount reader.

FEATURES

- Simple migration from the most popular Proximity technologies to iCLASS
- Open architecture design allows project specific formats and keys
- Provides flexible options for processing multitechnology cards and configuring the reader's audio/visual characteristics
- All HID card formats carry over
- Reads: 125 kHz - HID, Indala or AWID Proximity, 13.56 MHz - iCLASS, DESFire - ISO 15693 CSN (MyD, I Code, Tag It), ISO 14443A CSN (MIFARE)
- Lifetime warranty

Anixter No.	Vendor No.	Description
372400	6145A	Wiegand
372401	6143A	Clock-and-Data
372402	6144A	Transit

RPK40 multiCLASS Keypad Reader

HID GLOBAL CORPORATION



Multitechnology Prox and iCLASS reader with keypad.

FEATURES

- Combines contactless card presentation with a PIN
- Simple migration over time while incorporating the use of multiple-card technologies within a single building or across multiple facilities using the most popular Proximity technologies to iCLASS
- Enhanced security through mutual authentication and data encryption
- Open-architecture design that allows project specific formats and keys powerful options
- Provides flexible options for processing multitechnology cards and configuring the reader's audio/visual characteristics
- All HID card formats carry over

- Reads: 125 kHz - HID Proximity and AWID, 13.56 MHz - iCLASS, DESFire - ISO 15693 CSN (MyD, I Code, Tag It), ISO 14443A CSN (MIFARE)
- Lifetime warranty

Anixter No.	Vendor No.	Description
372406	6136A	Wiegand
372407	6133A	Clock-and-Data
372408	6134B	Transit

Entry Prox Reader

HID GLOBAL CORPORATION



125 kHz stand-alone Proximity card reader.

FEATURES

- Provides single-door Proximity access control for small installations or remote locations
- Easily modified to become an online reader by switching to Wiegand output mode
- Detachable antenna module can be mounted up to 10 feet away
- Keypad for PIN entry and programming
- PDA interface for programming and transaction upload
- UL 294 Listed
- Read range from 1 in. - 3 in.
- Dimensions: 5.25 in. H x 1.625 in. W x 1.375 in. D (13.33 cm x 6.98 cm x 4.1 cm)
- Lifetime warranty

For ordering information, please see the HID "How to Order Guides" (HTOG) at www.hidcorp.com/htog or call your sales representative.

Anixter No.	Vendor No.	Description
243264	4045	Stand-alone Proximity card reader

MiniProx Reader

HID GLOBAL CORPORATION



125 kHz mullion-mount Proximity card reader.

FEATURES

- Slim, attractive design with choice of cover style and color
- Weatherproof design for indoor or outdoor use
- Available with Wiegand or Clock-and-Data interface
- Available in the Classic or Designer Series cover in four colors
- Multilingual installation guide available in seven languages
- Optional hazardous-location version available
- Read range of 1 in. - 5.5 in.
- Dimensions: 6.0 in. H x 1.7 in. W x 1.0 in. D (15.2 x 4.3 x 1.91 cm)
- Lifetime warranty

For ordering information, please see the HID "How to Order Guides" (HTOG) at www.hidcorp.com/htog or call your sales representative.

Anixter No.	Vendor No.	Description
243256	5368	Clock-and-Data
259825	5365	MiniProx mullion

MaxiProx Reader

HID GLOBAL CORPORATION



125 kHz long-range Proximity card reader.

FEATURES

- Ideal for installations incorporating parking control
- Long read-range distance (up to 8 ft. with ProxPass)
- Auto-tune allows read range to be maintained within 4 inches of metal
- Offers Wiegand, Clock-and-Data, RS-232 or RS-422 output
- Read range from 8 in. - 8 ft.
- Dimensions: 12.0 in. H x 12.0 in. W x 1.0 in. D (30.5 x 30.5 x 2.54 cm)
- Lifetime warranty

For ordering information, please see the HID "How to Order Guides" (HTOG) at www.hidcorp.com/htog or call your sales representative.

Anixter No.	Vendor No.	Description
241599	5375AGN00	MaxiProx long-range Proximity reader

ProxPoint PLUS Reader

HID GLOBAL CORPORATION



125 kHz value-priced Proximity card reader.

FEATURES

- Small-size, low-cost reader features a host or locally controllable beeper and multicolor LED
- Weatherproof design for indoor or outdoor use
- Available in the Classic or Designer Series cover in four colors
- Multilingual installation guide available in seven languages
- Read range of 1 in. - 3 in.
- Dimensions: 3.135 in. H x 1.70 in. W x 0.66 in. D (7.96 x 4.3 x 1.68 cm)
- Lifetime warranty

For ordering information, please see the HID "How to Order Guides" (HTOG) at www.hidcorp.com/htog or call your sales representative.

Anixter No.	Vendor No.	Description
243255	6008B	Clock-and-Data
259824	6005B	Wiegand output

ProxPro II Reader

HID GLOBAL CORPORATION



HID's ProxPro II Proximity reader for access control combines performance, reliability and ease of installation into a two-piece, weatherproof potted enclosure. International users will appreciate the multilingual installation manual, lower voltage requirement and flexible mounting options.

FEATURES

- Two-piece reader design allows for easy installation
- Available with a Wiegand or Clock-and-Data interface
- Provides high reliability, consistent read range and low power consumption
- Features include multicolor LED and internal control or host control of the LED and beeper
- Mounts directly on metal with minimal impact on the read-range performance. Optional kit enables mounting behind glass
- Read range of 2 in.
- Dimensions: 5.0 in. H x 5.0 in. W x 1.0 in. D (12.7 x 12.7 x 2.5 cm)
- Lifetime warranty

For ordering information, please see the HID "How to Order Guides" (HTOG) at www.hidcorp.com/htog or call your sales representative.

Anixter No.	Vendor No.	Description
258680	5455	Wiegand output
258681	5458	Clock-and-Data

Door Locking Hardware

HID Global

ProxPro II with Keypad Reader

HID GLOBAL CORPORATION



125 kHz keypad Proximity card reader.

FEATURES

- Provides the same features as the ProxPro proximity reader, with a fully integrated keypad
- Keypad data and card data can be sent on the same cable, or on a separate cable using 2 of 7 or 3 x 4 matrix
- Lifetime warranty

For ordering information, please see the HID "How to Order Guides" (HTOG) at www.hidcorp.com/htog or call your sales representative.

Anixter No.	Vendor No.	Description
243258	5352	Serial interface
372409	5355	Wiegand output
372411	5358	Clock-and-Data

ThinLine II Reader

HID GLOBAL CORPORATION



125 kHz low-profile Proximity card reader.

FEATURES

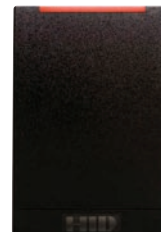
- The size of most standard U.S. switch plates
- Weatherproof design for indoor or outdoor use
- Available in the Classic or Designer Series cover in four colors
- Multilingual installation guide available in seven languages
- Read range of 2 in. - 5.5 in.
- Dimensions: 4.65 in. H x 2.95 in. W x 0.5 in. D (11.8 x 7.5 x 1.2 cm)
- Lifetime warranty

For ordering information, please see the HID "How to Order Guides" (HTOG) at www.hidcorp.com/htog or call your sales representative.

Anixter No.	Vendor No.	Description
243257	5398	Clock-and-Data

EdgePlus Solo ESR40

HID GLOBAL CORPORATION



Single-door, IP-based controller with integrated R40 reader.

FEATURES

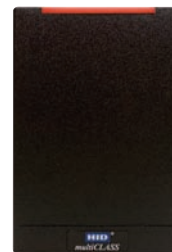
- Small-footprint, single-door, IP-based access control solution
- Provides remote management over the network via standard Web browser
- Single-piece design with integrated R40 iCLASS reader
- 1,000 users/5,000 events
- Standardized reports including CSV export
- 12 V DC, 600 mA power available for external field devices and locking hardware
- Power requirements: 12 V DC external power or built-in 802.3af Power over Ethernet (PoE)
- Dimensions: 4.8 in. H x 3.3 in. W x 2.3 in. D (121.9 mm x 83.8 mm x 57.9 mm)
- Interior use only

Anixter No.	Vendor No.	Description
348916	83120	EdgePlus Solo ESR40

For ordering information, please see the HID "How to Order Guides" (HTOG) at www.hidcorp.com/htog or call your sales representative.

EdgePlus Solo ESRP40

HID GLOBAL CORPORATION



Single-door, IP-based controller with integrated RP40 reader.

FEATURES

- Small-footprint, single-door, IP-based access control solution
- Provides remote management over the network via standard Web browser
- Single-piece design with integrated RP40 multiCLASS reader
- 1,000 users/5,000 events
- Standardized reports including CSV export
- 12 V DC, 600 mA power available for external field devices and locking hardware

- Power requirements: 12 V DC external power or built-in 802.3af Power over Ethernet (PoE)
- Dimensions: 4.8 in. H x 3.3 in. W x 2.3 in. D (121.9 mm x 83.8 mm x 57.9 mm)
- Interior use only

Anixter No.	Vendor No.	Description
348917	83125	IP-based controller with RP40 reader

For ordering information, please see the HID "How to Order Guides" (HTOG) at www.hidcorp.com/htog or call your sales representative.

Fargo HDP5000 Card Printer/Encoder

HID GLOBAL CORPORATION



The HDP5000 Card Identity System gives you everything you need to start producing high-definition cards fast. Using Asure ID Solo Photo ID software, you'll be ready to design, print and manage the production of your ID cards right from the start. Internet connectivity comes standard, for card issuance anywhere on your network. Plus, the system's modular design allows you to add components as you need them. An optional encoding module provides up to three different encoding technologies to add functionality to your cards. Additional modules for dual-sided printing and lamination provide even greater opportunities to upgrade card durability and security. For high-definition card-printing technology that's reliable and affordable, choose the easy-to-use HDP5000 Card Identity System.

FEATURES

- Fargo HDP5000 Card Printer/Encoder. Single-sided, over-the-edge printing on CR-80 cards. Full-color, continuous-tone printing at 300 dpi (11.8 dots/mm). Easily upgraded with dual-sided printing, single- or dual-sided lamination and card-encoding technologies (technology card, Proximity, magnetic stripe).
- Asure ID Solo ID card design and production software. Powerful yet easy-to-use photo ID card software with advanced card design and batch printing capabilities. The HDP5000 system also comes with Photo Capture camera software and Workbench, a software toolkit for set up, printer diagnostics and firmware upgrades. (Computer display not included.)
- USB digital camera. This camera makes capturing cardholder photos quick and easy. (Tripod not included, but available as an accessory.)
- Full-color ribbon cartridge and HDP Film for printing 500 card images. (YMCK with cleaning roller.)
- 500 UltraCard PVC cards
- USB 2.0 cable for connecting the HDP5000 printer/encoder to your computer
- The Fargo HDP5000 Card Identity System also includes:
 - Two-year printer warranty
 - Lifetime printhead warranty
 - One-year free loaner printer (U.S. only)

Anixter No.	Vendor No.	Description
369062	89000	Single-sided base model, 16 MB memory, 110-240 V AC, two-year printer warranty (including on-call express in the U.S. for the first year), lifetime warranty on the printhead
369063	89011	Single-sided base model, ISO magnetic-stripe encoder
369064	89003	Dual-sided base model, 16 MB memory, 110-240 V AC, two-year printer warranty (including on-call express in the U.S. for the first year), lifetime warranty on the printhead
369065	89013	Dual-sided base model, ISO magnetic-stripe encoder
369067	89008	Dual-sided base model, 16 MB memory, 110-240 V AC, two-year printer warranty (including on-call express in the U.S. for the first year) lifetime warranty on the printhead with dual-sided lamination

For additional HDP5000 printer configurations, supplies or accessories, please contact your local sales location.

Fargo HDP5000 Card Printer/Encoder System

HID GLOBAL CORPORATION



The HDP5000 Card Identity System gives you everything you need to start producing high-definition cards fast. Using Asure ID Solo Photo ID software, you'll be ready to design, print and manage the production of your ID cards right from the start. Internet connectivity comes standard, for card issuance anywhere on your network. Plus, the system's modular design allows you to add components as you need them. An optional encoding module provides up to three different encoding technologies to add functionality to your cards. Additional modules for dual-sided printing and lamination provide even greater opportunities to upgrade card durability and security. For high-definition card-printing technology that's reliable and affordable, choose the easy-to-use HDP5000 Card Identity System.

FEATURES

- Fargo HDP5000 Card Printer/Encoder. Single-sided, over-the-edge printing on CR-80 cards. Full-color, continuous-tone printing at 300 dpi (11.8 dots/mm). Easily upgraded with dual-sided printing, single- or dual-sided lamination and card encoding technologies (technology card, Proximity, magnetic stripe)
- Asure ID Solo ID card design and production software. Powerful yet easy-to-use photo ID card software with advanced card design and batch printing capabilities. The HDP5000 system also comes with in-Photo Capture camera software and Workbench, a software toolkit for setup, printer diagnostics and firmware upgrades. (Computer display not included.)
- USB digital camera. This camera makes capturing cardholder photos quick and easy (Tripod not included, but available as an accessory.)

Continued on next page >>

Door Locking Hardware

HID Global

(continued) Fargo HDP5000 Card Printer/Encoder System

- Full-color ribbon cartridge and HDP Film for printing 500 card images (YMCK with cleaning roller.)
- 500 UltraCard PVC cards
- USB 2.0 cable for connecting the HDP5000 printer/encoder to your computer
- The Fargo HDP5000 Card Identity System also includes:
 - Two-year printer warranty
 - Lifetime printhead warranty
 - One-year free loaner printer (U.S. only)
 - One-year free Asure ID software technical support

Anixter No.	Vendor No.	Description
425823	89256	HDP5000 System

DUAL-SIDED PRINTING

Anixter No.	Vendor No.	Description
448838	49100	Dual-sided base model, USB and Ethernet* printer with two-year printer warranty
448839	491110	Dual-sided base model + ISO magnetic-stripe encoder

For additional DTC4500 printer configurations, supplies or accessories, please contact your local sales location.

Fargo DTC4500 Direct-to-card Printer/Encoder

HID GLOBAL CORPORATION



The DTC4500 plastic card printer provides all the security of HID with all the reliability of Fargo for sharp, professional-looking, high-quality, completely secure ID cards and photo ID badges - easy and quick.

FEATURES

- Modular design and field upgradable
- Password protection
- SmartScreen graphical display
- USB or optional Ethernet connectivity
- Optional dual-side printing
- Optional 125 kHz, 13.56 MHz, contact chip and magnetic-stripe encoding
- Optional same-side input/output hopper that holds 200 plastic cards

SINGLE-SIDED PRINTING

Anixter No.	Vendor No.	Description
448835	49600	Includes: DTC4500 single-sided printer, AsureID Express Software, high-end USB digital camera, full-color ribbon cartridge (250 images), 300 UltraCard PVC cards, USB cable and one-year Asure ID Protect Plan
448836	49000	Single-sided base model, USB and Ethernet* Printer with two-year printer warranty
448837	49010	Single-sided base model + ISO magnetic-stripe encoder

Bosch Security Systems Inc.

ARD-AYH12 - RFID Proximity Reader

BOSCH SECURITY SYSTEMS



Single-gang box-size RFID Proximity reader using 125 KHz EM technology with a sounder and bi-colored LED control.

FEATURES

- 26-bit Wiegand output
- Up to 4.5 inch read range, operating voltage of 5-16 V DC
- Sleek design, tough, UV-resistant casing suited for indoor and outdoor installations

Anixter No.	Vendor No.	Description
395027	ARD-AYH12	RFID Proximity reader: access control card reader with Wiegand output for 125 kHz card technology (EM)
395028	ACD-ATR11ISO	RFID card: standard 125 kHz Proximity read-only card for Wiegand readers type W 3
395029	ACD-ATR14CS	RFID card: clamshell standard 125 kHz Proximity read-only card for Wiegand readers type W 3
395030	ACA-ATR13	RFID tag: 125 kHz Proximity read-only tag for Wiegand readers type W 3

ARD-AYJ12 - RFID Proximity Reader

BOSCH SECURITY SYSTEMS



Mini mullion-style RFID Proximity reader using 125 KHz EM technology with a sounder and bi-colored LED control.

FEATURES

- 26-bit Wiegand output
- Up to 4.0 inch read range, operating voltage of 5-16 V DC
- Sleek design, tough, UV-resistant casing perfectly suited for indoor and outdoor installations

Anixter No.	Vendor No.	Description
395031	ARD-AYJ12	RFID Proximity reader: access control card reader with Wiegand output for 125 kHz card technology (EM)
395028	ACD-ATR11ISO	RFID card: standard 125 kHz Proximity read-only card for Wiegand readers type W 3
395029	ACD-ATR14CS	RFID card: clamshell standard 125 kHz Proximity read-only card for Wiegand readers type W 3
395030	ACA-ATR13	RFID tag: 125 kHz Proximity read-only tag for Wiegand readers type W 3

ARD-AYK12 - RFID Proximity Reader

BOSCH SECURITY SYSTEMS



Economical micro mullion-style RFID Proximity reader using 125 KHz EM technology with a sounder and bi-colored LED control.

FEATURES

- 26-bit Wiegand output
- Up to 3.0-inch read range, operating voltage of 5-16 V DC
- Sleek design, tough, UV-resistant casing perfectly suited for indoor and outdoor installations

Anixter No.	Vendor No.	Description
395033	ARD-AYK12	RFID Proximity reader: access control card reader with Wiegand output for 125 kHz card technology (EM)
395028	ACD-ATR11ISO	RFID card: standard 125 kHz Proximity read-only card for Wiegand readers type W 3
395029	ACD-ATR14CS	RFID card: clamshell standard 125 kHz Proximity read-only card for Wiegand readers type W 3
395030	ACA-ATR13	RFID tag: 125 kHz Proximity read-only tag for Wiegand readers type W 3

Door Locking Hardware

Bosch Security Systems Inc.

ARD-AYQ12 - RFID Proximity Reader

BOSCH SECURITY SYSTEMS



Vandal-resistant U.S. single-gang box-size RFID Proximity reader using 125 KHz EM technology with a sounder and bi-colored LED control.

FEATURES

- 26-bit Wiegand output
- Up to 2.0 inch read range, operating voltage of 5-16 V DC
- Vandal-resistant metal housing designed for indoor or outdoor installations

Anixter No.	Vendor No.	Description
395034	ARD-AYQ12	RFID Proximity reader: slim metal antivandal reader with 26-bit Wiegand output for 125 kHz card technology
395028	ACD-ATR11ISO	RFID card: standard 125 kHz Proximity read-only card for Wiegand readers type W 3
395029	ACD-ATR14CS	RFID card: clamshell standard 125 kHz Proximity read-only card for Wiegand readers type W 3
395030	ACA-ATR13	RFID tag: 125 kHz Proximity read-only tag for Wiegand readers type W 3

ARD-AYCE65B - RFID Proximity Reader

BOSCH SECURITY SYSTEMS



With an ultraslim, low-profile design, this RFID Proximity reader features an illuminated piezoelectric keypad for PIN-code entry. It has a sounder and multicolored LED. It is weather- and vandal-resistant, with a standard Wiegand output.

FEATURES

- Ultraslim, flush-mounting design
- Piezoelectric keypad for PIN-code entry
- Reader with beeper and multicolored LED display

- Field-programmable keypad transmission formats
- 26-bit Wiegand output
- Weather and vandal resistant

Anixter No.	Vendor No.	Description
395035	ARD-AYCE65B	RFID Proximity reader: slim access control card reader with piezoelectric keypad and Wiegand output for 125 kHz card technology (EM)
395028	ACD-ATR11ISO	RFID card: standard 125 kHz Proximity read-only card for Wiegand readers type W 3
395029	ACD-ATR14CS	RFID card: clamshell standard 125 kHz Proximity read-only card for Wiegand readers type W 3
395030	ACA-ATR13	RFID tag: 125 kHz Proximity read-only tag for Wiegand readers type W 3

ARD-R10 iCLASS Mullion Reader

BOSCH SECURITY SYSTEMS



The R10 iCLASS Mullion Reader offers the benefits of contactless smart-card technology and Proximity technology. Smart-card technology provides enhanced security and a 13.56 MHz platform for speed. Used with contactless credentials: cards, keyfobs or adhesive tags. Proximity technology provides a longer read range.

FEATURES

- Elegant curved faceplate design
- Distinct audio and visual indicators
- Enhanced security
- Flexible installation options
- Suitable for exterior and interior installations

Anixter No.	Vendor No.	Description
348776	ARD-R10	R10 iCLASS Mullion Reader
395036	ACA-IC16K26-10	Contactless adhesive tag with smart-card technology programmed to Wiegand 26-bit format
348986	ACD-IC2K26-50	13.56 MHz contactless smart-card programmed to Wiegand 26-bit format; two 1 kb application areas
353030	ACD-IC16K26-50	13.56 MHz contactless smart-card programmed to Wiegand 26-bit format; 16 1 kb application areas
395037	ACD-IC16KP26-50	Contactless smart-card programmed to Wiegand 26-bit format; operates at 125 kHz or 13.56 MHz; has 16 1 kb application areas

Bosch Security Systems Inc.

Anixter No.	Vendor No.	Description
348985	ACT-IC2K26-10	Contactless token with smart-card technology programmed to Wiegand 26-bit format; 2 kb (256 byte) with two application areas
353031	ACT-IC16K26-10	Contactless token with smart-card technology programmed to Wiegand 26-bit format; 16 kb (2K byte) with 16 application areas

Anixter No.	Vendor No.	Description
348985	ACT-IC2K26-10	Contactless token with smart-card technology programmed to Wiegand 26-bit format; 2 kb (256 byte) with two application areas
353031	ACT-IC16K26-10	Contactless token with smart-card technology programmed to Wiegand 26-bit format; 16 kb (2K byte) with 16 application areas

ARD-R40 iCLASS Switchplate Reader

BOSCH SECURITY SYSTEMS



The R40 iCLASS Switchplate Reader offers the benefits of contactless smart-card technology and Proximity technology. Smart-card technology provides enhanced security and a 13.56 MHz platform for speed. Used with contactless credentials: cards, keyfobs or adhesive tags. Proximity technology provides a longer read range.

FEATURES

- Elegant curved faceplate design
- Distinct audio and visual indicators
- Enhanced security
- Flexible installation options
- Suitable for exterior and interior installations

Anixter No.	Vendor No.	Description
348777	ARD-R40	R40 iCLASS Switchplate Reader
348987	ACA-IC2K26-10	Contactless adhesive tag with smart-card technology programmed to Wiegand 26-bit format
395036	ACA-IC16K26-10	Contactless adhesive tag with smart-card technology programmed to Wiegand 26-bit format
348986	ACD-IC2K26-50	13.56 MHz contactless smart-card programmed to Wiegand 26-bit format; two 1 kb application areas
353030	ACD-IC16K26-50	13.56 MHz contactless smart-card programmed to Wiegand 26-bit format; 16 1 kb application areas
395037	ACD-IC16KP26-50	Contactless smart-card programmed to Wiegand 26-bit format; operates at 125 kHz or 13.56 MHz; has 16 1 kb application areas

ARD-R90 Long-Range iCLASS Reader

BOSCH SECURITY SYSTEMS



The ARD-R90 Long-Range iCLASS Reader has an 18-inch maximum read range, which is ideal for installations such as a parking garage or vehicle-entry points. The standard Wiegand output provides compatibility with most standard Wiegand access controllers.

FEATURES

- Contactless smart-card reader, read-only, long range
- The multicolored LED and beeper can be controlled internally or by the host access controller
- Rugged, weatherized polycarbonate enclosure designed to withstand harsh environments

Anixter No.	Vendor No.	Description
395061	ARD-R90	Proximity long-range access control reader with Wiegand interface

D8223 Prox Pro Reader

BOSCH SECURITY SYSTEMS



The D8223 Prox Pro Reader provides Wiegand protocol interface capability in a black, easily mounted, weather-resistant enclosure. The reader is designed to fit a vertically mounted, U.S.-standard, single-gang switch box for easy installation. It is field-adjustable through a selectable jumper setting so that it can be mounted directly to metal with minimal impact on its read-range performance.

Continued on next page >>

Door Locking Hardware

Bosch Security Systems Inc.

(continued) D8223 Prox Pro Reader

FEATURES

- Easy to mount
- Beeper and LED configurations can be host- and/or locally controlled
- Indoor/outdoor design

Anixter No.	Vendor No.	Description
353032	D8223	Prox Pro Reader: provides Wiegand protocol interface capability in a black, easily mounted, weather-resistant enclosure
353036	D8236-10	Randomly coded Proximity card that is Wiegand 26-bit; each package contains 10 cards
353038	D8236KF-10	Randomly coded, gray, plastic, Wiegand 26-bit token; attaches to a keychain; each package contains 10 tokens
357812	D8236TG-10	Randomly coded, gray, plastic, Wiegand 26-bit adhesive tag; attaches to nonmetallic surfaces; each package contains 10 tags
395037	ACD-IC16KP26-50	Contactless smart-card programmed to Wiegand 26-bit format; operates at 125 kHz or 13.56 MHz; has 16 1 kb application areas

D8224 Mullion Reader

BOSCH SECURITY SYSTEMS



The D8224 Mullion Reader is a Wiegand-protocol reader designed for installation on a door mullion. Mount the reader directly to metal surfaces with minimal impact on the read-range performance. It is designed to fit a junction box supplied with each reader. For easy installation, the junction box surface mounts with two screws. The slim, unobtrusive enclosure mounts directly onto metal surfaces, such as door mullions.

FEATURES

- Mounts easily to metal surfaces
- Beeper and LED configurations can be host- and locally controlled
- Indoor and outdoor design

Anixter No.	Vendor No.	Description
353033	D8224	Wiegand protocol reader designed for installation on a door mullion
353036	D8236-10	Randomly coded Proximity card that is Wiegand 26-bit; each package contains 10 cards

Anixter No.	Vendor No.	Description
353038	D8236KF-10	Randomly coded, gray, plastic, Wiegand 26-bit token; attaches to a keychain; each package contains 10 tokens
357812	D8236TG-10	Randomly coded, gray, plastic, Wiegand 26-bit adhesive tag; attaches to nonmetallic surfaces; each package contains 10 tags
395037	ACD-IC16KP26-50	Contactless smart card programmed to Wiegand 26-bit format; operates at 125 kHz or 13.56 MHz; has 16 1 kb application areas

D8224 SP Low-profile Proximity Card Reader

BOSCH SECURITY SYSTEMS



The D8224-SP Low-profile Proximity Card Reader can use Wiegand protocol or magnetic-stripe interfaces. The reader is attractive and easily mounted, with a weatherproof enclosure. The unobtrusive reader is reliable, has a consistent read range, and low power consumption. The Wiegand output model interfaces with all existing Wiegand-protocol access control systems. The magnetic-stripe model interfaces with most systems that accept magnetic-stripe readers.

FEATURES

- Wiegand or magnetic-stripe compatibility
- Indoor and outdoor design
- LED indicator
- Test features

Anixter No.	Vendor No.	Description
353034	D8224-SP	Low-profile proximity card reader: provides Wiegand or magnetic-stripe compatibility and an indoor and outdoor design
353036	D8236-10	Randomly coded Proximity card that is Wiegand 26-bit; each package contains 10 cards
353038	D8236KF-10	Randomly coded, gray, plastic, Wiegand 26-bit token; attaches to a keychain; each package contains 10 tokens
357812	D8236TG-10	Randomly coded, gray, plastic, Wiegand 26-bit adhesive tag; attaches to nonmetallic surfaces; each package contains 10 tags
395037	ACD-IC16KP26-50	Contactless smart-card programmed to Wiegand 26-bit format; operates at 125 kHz or 13.56 MHz; has 16 1 kb application areas

Bosch Security Systems Inc.

D8225 Mini Mullion Reader

BOSCH SECURITY SYSTEMS



The D8225 Reader is designed so that it can be mounted directly onto metal - for example, door mullions - with no change in read range. Its small size, unobtrusive appearance, economical price and rugged, weatherproof polycarbonate enclosure make it an ideal choice for indoor and outdoor applications.

FEATURES

- Mounts directly on metal surfaces with no change in read range
- Beeper and LED configurations can be host- and locally controlled
- Indoor and outdoor design

Anixter No.	Vendor No.	Description
353035	D8225	Mini Mullion Reader: mounts directly onto metal, such as door mullions, with no change in read range
353036	D8236-10	Randomly coded Proximity card that is Wiegand 26-bit; each package contains 10 cards
353038	D8236KF-10	Randomly coded, gray, plastic, Wiegand 26-bit token; attaches to a keychain; each package contains 10 tokens
357812	D8236TG-10	Randomly coded, gray, plastic, Wiegand 26-bit adhesive tag; attaches to nonmetallic surfaces; each package contains 10 tags
395037	ACD-IC16KP26-50	Contactless smart card programmed to Wiegand 26-bit format; operates at 125 kHz or 13.56 MHz; has 16 1 kb application areas

D8229 Access Keypad

BOSCH SECURITY SYSTEMS



The D8229 Access Keypad sends output in a Wiegand 26-bit format. Enter a personal identification number (PIN) to obtain access. There are keys for numbers 0 through 9, for the number symbol (#), and for the asterisk symbol (*). Each time you press a key, one of the light-emitting diode (LED) indicators emits a red light and an annunciator emits a beep. The keypad's steel enclosure and protective material make it resistant to damage from moisture, harsh weather and vandalism.

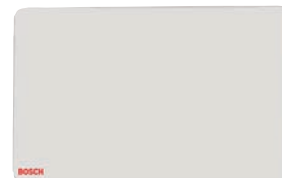
FEATURES

- PIN keypad
- Easy installation
- Two LED indicators
- Sturdy enclosure

Anixter No.	Vendor No.	Description
395072	D8229	Access keypad in sturdy, steel enclosure; electronic components sealed in protective material

ACD-IC2K26-50 iCLASS 2k 26-bit Card

BOSCH SECURITY SYSTEMS



A 13.56 MHz contactless smart card programmed to Wiegand 26-bit format. Card has a glossy finish and has inkjet matching numbers. Each package contains 50 cards.

FEATURES

- 13.56 MHz read and write contactless smart-card technology
- Fast, reliable communications with high data integrity
- Mutual authentication, encrypted data transfer and 64-bit diversified keys for read and write capabilities
- Works with the R10, R40 and RK40 iCLASS readers

Anixter No.	Vendor No.	Description
348986	ACD-IC2K26-50	13.56 MHz contactless smart card programmed to Wiegand 26-bit format; two 1 kb application areas

Door Locking Hardware

Bosch Security Systems Inc.

ACT-IC2K26-10 iCLASS 2k 26-bit Keyfob

BOSCH SECURITY SYSTEMS



A 13.56 MHz contactless keyfob programmed to Wiegand 26-bit format. The keyfob is black plastic and attaches to a key chain. Each package contains 10 keyfobs.

FEATURES

- 13.56 MHz read and write contactless smart-card technology
- Fast, reliable communications with high data integrity
- Mutual authentication, encrypted data transfer and 64-bit diversified keys for read and write capabilities
- Works with the R10, R40 and RK40 iCLASS readers

Anixter No.	Vendor No.	Description
348985	ACT-IC2K26-10	Contactless token with smart-card technology programmed to Wiegand 26-bit format; 2k bit (256 byte) with two application areas

ACA-IC2K26-10 iCLASS 2k 26-bit Adhesive Tag

BOSCH SECURITY SYSTEMS

A 13.56 MHz contactless adhesive tag programmed to Wiegand 26-bit format. The tag is black plastic with adhesive backing that attaches to nonmetallic surfaces. Each package contains 10 adhesive tags.

FEATURES

- 13.56 MHz read and write contactless smart-card technology
- Fast, reliable communications with high data integrity
- Mutual authentication, encrypted data transfer and 64-bit diversified keys for read and write capabilities
- Works with the R10, R40 and RK40 iCLASS readers

Anixter No.	Vendor No.	Description
348987	ACA-IC2K26-10	Contactless adhesive tag with smart-card technology programmed to Wiegand 26-bit format

DS150i/DS151i Request-to-Exit Sensors

BOSCH SECURITY SYSTEMS



The Detector Series consists of the DS150i and DS151i Detectors specifically designed for Request-to-Exit (REX) applications. The DS150i and DS151i detect motion in their coverage area and signal an access control system or door-control device.

FEATURES

- Single- or double-door use
- Wall or ceiling mountable
- Internal vertical pointability
- Wraparound coverage pattern
- Selectable relay trigger mode
- Selectable Fail-Safe/Fail-Secure modes

Anixter No.	Vendor No.	Description
237986	DS150i	Request-to-Exit detector, PIR, gray finish
237988	DS151i	Request-to-Exit detector, PIR, black finish
311784	TP160	Trim plate for DS150/DS160
311785	TP161	Trim plate for DS151/DS161

DS160/DS161 Request-to-Exit Sensors

BOSCH SECURITY SYSTEMS



FEATURES

- The DS160 Series offer the same great features as the DS150i Series, plus...
 - Door monitor with sounder alert
 - Sequential Logic Input (SLI)
 - Keycard input
 - Up to 64-second adjustable latch time
 - Selectable relay trigger mode
 - Adjustable sounder volume

Anixter No.	Vendor No.	Description
237989	DS160	Light gray
237990	DS161	Black
311784	TP160	Trim plate for DS150/DS160
311785	TP161	Trim plate for DS151/DS161

TZ Praetorian Locking System

TZ Praetorian Locking System

TZ - TELEZYGOTOLOGY INC.



The TZ Praetorian system solution is designed to work with existing third-party building-access control systems to extend physical security and audit trail capability down to the cabinet-enclosure level. A single swipe of the same ID card used for building access provides timed authorization to nominated cabinet doors, together with discrete-event monitoring and system-access reporting. The system is scalable through simple industry-standard connections between TZ components and the access-control system to manage any number of enclosures. Cabinet door access across multiple cabinets can be readily managed through the multicabinet trigger box with integrated status indication for quick security-status identification.

The system includes three main components: TZ Praetorian Junction, TZ Praetorian Trigger and the TZ SlideHandle intelligent-locking device.

TZ Praetorian system components have been tested and certified to meet harmonized global standards per IEC/UL/CSA 60950-1.

FEATURES

- Authorized timed access to multiple doors with a single card presentation
- Compatible with standard structured cabling for 100 m length
- Wide range of input voltages
- Fast and easy mounting of locking components
- Visual indication and reporting of secured and unsecured states and true door status
- Manual key override lock release
- Differentiated reporting of electronic or manual key release
- No additional software application is needed
- Flexible mounting options to fit a broad range of cabinet brands and models

Contact your local sales representative for further details and ordering information.

TZ Praetorian Junction

TZ - TELEZYGOTOLOGY INC.



The TZ Praetorian Junction interprets relay output from enterprise access control systems and responds with the status of other system components. The TZ Praetorian Junction provides data communication and power to one or two TZ Praetorian Triggers and either 12 or 24 RJ45 ports that connect to TZ locking devices through structured cabling.

The TZ Praetorian Junction also provides pluggable screw terminal blocks for either 12 or 24 connections to the I/O cards of access control systems. It can also be mounted in a 19 in. 1U rack space, wall, shelf, or anywhere else convenient to the access controller and a structured cable patch panel. Patents pending.

The contents of the box:

- One TZ Junction
- 12 Wago 4-pin connectors 734-204 (24 for model 7141AF)
- Two 1U rack-mount brackets and hardware
- One IEC power cord
- Five Wago connector operating levers 734-230
- One TZ Praetorian system manual

Note: Rack-mounting fasteners not included

FEATURES

- Compatible with structured cabling standards for 100 m length
- Screw terminal connections to 12- or 24-relay I/O from access controller
- RJ45 connections for power and data to 12 or 24 TZ locking devices
- RJ45 connections for power and data to one or two TZ Praetorian Triggers
- Wide range of input voltage: 90-250 V AC, 50-60 Hz
- Versions available for 12-door or 24-door capacity
- Flexible mounting options for rack, wall, or shelf
- UL/(C)UL and CE certifications

Anixter No.	Vendor No.	Description
394281	112191.02	TZ Junction, 12-door capacity (requires one TZ Trigger unit)
394282	112191.01	TZ Junction, 24-door capacity (requires two TZ Trigger units)

Door Locking Hardware

TZ Praetorian Locking System

TZ Praetorian Trigger

TZ - TELEZYGLOGY INC.



The TZ Praetorian Trigger is an indicator and interface device that visually communicates the status of up to 12 doors and allows authorized users to open doors with a single button push. Colored LEDs behind each button indicate the locking state of cabinet or enclosure doors:

- RED means all enclosure doors are closed and secure
- FLASHING ORANGE indicates access is currently authorized and a button push will open the enclosure. This is the only state where a button push will have any effect
- GREEN means that the door is open or is not secure
- FLASHING RED indicates the cabinet door has been accessed by manual key or has been breached

Each button can be labeled to correspond to the enclosure door that it is linked to and can trigger. The TZ Praetorian Trigger receives power and data communications from the TZ Praetorian Junction over standard patch cabling connections. The device can be mounted onto a cabinet, wall, or electrical junction box in a location convenient for use and for viewing the status of all enclosures in the system. We recommend that it is placed at the end of a row of cabinets or near the entrance of a room in close proximity to the card reader.

The contents of the box:

- One TZ Trigger front assembly
- One TZ Trigger rear plate
- Four TZ Trigger adhesive mount pads

Note: Standard clear plastic windows and labels are not included. Each TZ Trigger will require 13 labels and clear plastic windows. They can be ordered separately in a kit of 50 from part number 242338.

FEATURES

- Compatible with structured cabling standards for 100 m length
- Colored LEDs indicate status on all connected doors
- Triggers up to 12 doors
- Single RJ45 connection for all power and data
- Flexible mounting options
- Compatible with standard labeling
- UL/(C)UL and CE certifications

Anixter No.	Vendor No.	Description
394280	112132.01	TZ Trigger, 12 button

TZ SlideHandle

TZ - TELEZYGLOGY INC.



The TZ SlideHandle integrates a high load Shape Memory Alloy (SMA) actuated locking mechanism, a manual key override, an electronic door status sensor, an RJ45 connector for connection to standard patch cables and a multi-color LED status indicator.

- RED indicates the cabinet door is closed and secure
- ORANGE (flashing) indicates access is authorized and is ready for release by pushing the top of the lock
- GREEN shows the door is open
- FLASHING RED indicates the cabinet door has been accessed by manual key or has been breached

The TZ SlideHandle is powered and controlled via standard UTP Cat 5e/Cat 6 cabling through a TZ Praetorian Junction or TZ Centurion Bridge. The locking device has the ability to control auxiliary sensor devices for temperature, humidity and leak detection.

The contents of the box:

- One SlideHandle
- One accessory kit for mounting
- One mounting-instructions sheet

FEATURES

- Retrofits existing swing handle latching systems
- Compatible with most cabinet brands
- Simple installation and, if required, disassembly
- Housing sits outside the cabinet door and does not encroach into valuable cabinet real estate
- Compatible with currently available single-point and multipoint latching as well as split French doors
- Touch-to-release facility
- Powered and controlled by TZ Praetorian Junction or TZ Centurion Bridge up to 100 m cable via twisted-pair cabling (Cat 5e/Cat 6)
- Connects into RJ45-based twisted-pair cabling infrastructure with standard patch cables
- RS-485 serial communication allows remote unlocking, opening and status feedback
- Multiple sensors allow reporting on true door status, including manual override mode and forced entry (locked/closed, unlocked/closed, unlocked/open, locked/open)
- Multiple manual key override lock cylinders available for additional security

TZ Praetorian Locking System

APPLICATIONS

The TZ SlideHandle is an intelligent locking device that offers a drop-in replacement for manual swing-handle data center cabinet locks.

Anixter No.	Vendor No.	Description
427093	112479.01	TZ SlideHandle 4265CF
438855	112479.05	TZ SlideHandle 4265CF-R
427188	112479.04	TZ SlideHandle 4272CF
427189	112479.08	TZ SlideHandle 4272CF-R
427094	112479.03	TZ SlideHandle 4271CF
438552	112479.07	TZ SlideHandle 4271CF-R

LOCK CYLINDERS

One lock cylinder must be ordered for each SlideHandle. Additional lock-cylinder numbers are available. Please contact sales for ordering information.

Anixter No.	Vendor No.	Description
427191	112461.01	Lock cylinder #1
427192	112461.05	Lock cylinder #5
427193	112461.26	Lock cylinder #26
427194	112461.27	Lock cylinder #27
427195	112461.28	Lock cylinder #28

Please contact your local sales representative with your cabinet make and model type to help determine the appropriate TZ SlideHandle and mounting kit. Additional mounting kits may be required for certain data center cabinets.

- High-tensile load retention
- Releasable under preloads of up to 70 N
- Redundant sensing of locked and unlocked states
- Built-in mating stud ejector with internal release sensor
- Built-in sensor inputs can automatically control various outputs, including lights and fans
- Virtually silent operation through SMA actuation (no EMF emissions)
- Vibration-proof
- Configurable for easy push release
- Multiple manual release options available
- Flexible mounting options

APPLICATIONS

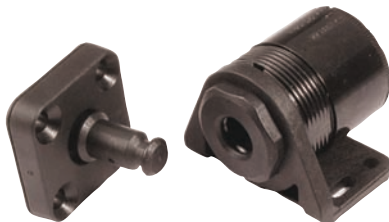
The compact, lightweight, high-load TZ Radial is suitable for a wide range of cabinet-locking applications and is the optimal security device for locking and auditing access to drawers and doors of medical casework and cabinets that contain sensitive information, controlled substances or expensive medical equipment.

Anixter No.	Vendor No.	Description
433380	111359.11	TZ Radial, model 4110CF

There are a variety of options available that include different materials, cable lengths and manual-release options for specific applications. Please contact your local sales representative to help you select the best option for your application.

TZ Radial - 4100 Series

TZ - TELEZGOLOGY INC.



The TZ Radial is a Shape Memory Alloy-actuated intelligent locking mechanism with a built-in locked/unlocked status sensor and an embedded microprocessor that is controlled via software command. The TZ Radial uses an eight-jaw locking mechanism to capture and hold an inserted mating stud. The SMA actuator controls the mechanism. This SMA actuator is managed by an integrated micro-controller, which provides programmability and software control. The embedded intelligence at the device level enables networking, switching and the ability to control other smart objects such as sensors. The TZ Radial locking device can be operated using a range of triggers, including push-button, contact closure, or RS-485 serial communications network command. The device features a manual key override and 1 ft. cable with an RJ45 coupler for connection to standard patch cables.

FEATURES

- Unique, addressable device ID enables RS-485 communications networking of multiple devices
- Remote access capability via network connection
- Touch-to-release facility

TZ Centurion Locking System

TZ - TELEZGOLOGY INC.



The TZ Centurion system solution truly defines micro-protection. The system's IP-based access-control system focuses on delivering physical security and environmental monitoring such as temperature-sensing, humidity-sensing and leak-detection at the most granular level from anywhere in the world. TZ Centurion is a cost-effective, flexible, retrofittable and easy-to-implement solution that has been designed specifically to protect your organization's most valuable and sensitive assets.

Built on an open and extendable architecture, the patented decentralized and embedded intelligence within the system locking devices provides an unprecedented level of capability that cannot be readily delivered by conventional systems in terms of the integrity, control, auditability and traceability of discrete assets.

Up to 32 TZ locking devices and 64 TZ sensors can be connected to each TZ Centurion Bridge. Each Bridge can be managed individually or scaled to a larger system, allowing hundreds of networked TZ locking devices, sensors, gateways and other third-party components to be administered through TZ Centurion Server software or through a third-party network management system that supports Simple Network Management Protocol (SNMP).

Continued on next page >>

Door Locking Hardware

TZ Praetorian Locking System

(continued) TZ Centurion Locking System

FEATURES

- IP-based asset-protection system which can seamlessly integrate with enterprise systems
- Physical security and audit trail capabilities for cabinets, equipment, panels and other enclosures
- Compatible with structured cabling up to 100 m via Cat 5e/Cat 6
- Integrates TZ locking devices for quick and easy retrofitting to cabinets
- Supports multiple Wiegand devices for third-party RFID readers
- Can control localized appliances such as fans and task lights
- Flexible and scalable system suitable for one cabinet or hundreds in multiple systems or across multiple sites
- Multilevel user permission for access control
- Remote upgrades of device firmware
- Support for SNMP traps
- Integrates with TZ Centurion Server

Contact your local sales representative for further details and ordering information.

TZ Centurion Bridge

TZ - TELEZGOLOGY INC.



The TZ Centurion Bridge is an IP-based gateway that controls the networking and management of TZ devices. The TZ Centurion network may be accessed through either the TZ Web client utility embedded on the TZ Centurion Bridge or a component of a separate enterprise application, either TZ Centurion Server or integration with a third-party access-management database. Communication between the individual TZ devices on the network is accomplished through daisy-chained components and a RS-485 serial data and power network.

The TZ Centurion Bridge is the centralized hub of the TZ Centurion system solution.

FEATURES

- IP-based gateway allowing control of a network of TZ locks, sensors and ID card readers
- Integrated auxiliary environmental-sensing capability
- Supports integration of TZ Wiegand devices for multiple third-party RFID or biometric readers
- Scalable RFID reader distribution throughout the network for ease of access
- Small compact form capable of being rack-mounted with integrated power supply
- No separate cabling; leverages existing industry standards and infrastructure
- TZ devices powered via standard structured cabling up to 100 m via Cat 5e/Cat 6

- Easily set up, manage and monitor activity through Web server-based application
- Compatible with TZ Centurion Server for multiple Bridge platform configurations

Anixter No.	Vendor No.	Description
419086	112271.01	TZ Centurion Bridge
438562	112549.01	TZ Centurion Bridge Rack Mounting Kit, 1U

TZ Centurion Server Software

TZ - TELEZGOLOGY INC.

As a significant value-added extension, TZ Centurion Server is a software application built on Microsoft technology to enable centralized remote management of your critical assets managed by the TZ Centurion System. The server communicates, controls, manages and reports on multiple TZ Centurion installations, managing all devices residing within the integrated system of networked TZ locking devices, sensors, gateways and other third-party components like biometric devices, cameras and meters. The platform stores all captured data, events and logs in a securely accessible central SQL Server database and uses Smart Client technology for its cross-browser user interface.

The TZ Centurion Server can be seamlessly integrated with existing enterprise applications like building management, system maintenance, enterprise resource planning, configuration management, geographic information systems and customer Web portals.

FEATURES

- User Interface
 - Rich and smart Web user interface, for both computer screens and handheld devices
 - Accessible only after authentication and authorization
- Server Foundation
 - Running on Windows Server and central SQL Server database
 - Multiuser, multidevice and multigateway support
 - Role-based user access to accommodate different types of users like facility managers, security officers, engineers, IT staff and analysts
- Security
 - Secure remote-access control over the network for authorized users; supports dual factor authentication
 - Real-time alert notification via SNMP trap, SMS and/or e-mail
 - Secure Sockets Layer (SSL) communication between server hardware and software end points
 - Secure multipoint proprietary RS-485 communications between hardware and security devices
- Operations
 - Access-management and issues-management for operational cards
 - Operational reports on environment factors and access of assets
- Integration
 - Integrates with other applications and systems through Web Service APIs, data integration and SNMP

Anixter No.	Vendor No.	Description
438770	112511.01	TZ Centurion Server Foundation
438772	112512.01	TZ Centurion Web Client Access, four licenses

TZ Praetorian Locking System

Anixter No.	Vendor No.	Description
438773	112513.01	TZ Centurion Device Access, 32 licenses
437326	112511.02	TZ Centurion Server Express, starter pack includes: one Server Foundation, two Web Client Access licenses and 64 Device Access licenses

ADDITIONAL MODULES

Anixter No.	Vendor No.	Description
444566	112514.01	TZ Analysis Module
444568	112515.01	TZ Asset Configuration Module
444570	112516.01	TZ Visit Management Module

Contact your local sales representative for further details and ordering information.

TZ Centurion Multi Port Link

TZ - TELEZGOLOGY INC.



The TZ Centurion Multi Port Link provides dynamic and cost-effective security, sensing and power expansion of the TZ Centurion System. This interconnect module enables networking of TZ locking and environmental monitoring devices.

One Multi Port Link can provide power and serial data connection for up to four TZ devices plus RS-485 serial data connections for the continuation of the network. The Multi Port Link can also act as an inline power injector in order to power devices and provide four additional I/O connectors for accessories like sensors, in-cabinet task lighting and fans.

FEATURES

- Extends TZ network and connects additional devices
- Provides power to devices
- Internal temperature sensor
- Screw terminals for auxiliary I/O devices
- Modules to cater for interconnection of two or four devices
- AC power adapter included

Anixter No.	Vendor No.	Description
419087	112004.02	TZ Centurion Multi Port Link
419088	112004.01	TZ Centurion Multi Port Link with power adapter
419089	112248.01	TZ Centurion Multi Port Link (RS-232) with power adapter

TZ Centurion RFID

TZ - TELEZGOLOGY INC.



The TZ Centurion RFID reader with integrated Wiegand translator connects to a TZ Centurion network and provides access control via RFID or by interpreting a Wiegand data stream from third-party security input such as from biometric scanners.

The device can operate both stand-alone, controlling a small group of networked system devices, or as a network device that transmits information - like access attempts - to the rest of the network.

FEATURES

- Allows RFID cards to trigger TZ devices
- Allows audit trail of authorized and unauthorized attempts in conjunction with specific applications
- Screw terminals for auxiliary I/O of one device
- Can be used as a stand-alone controller for a smaller network
- Powered from the TZ structured cable network

Anixter No.	Vendor No.	Description
419090	112167.01	TZ Centurion RFID

TZ Centurion Wiegand Translator

TZ - TELEZGOLOGY INC.



The TZ Centurion Wiegand Translator Interface connects to a TZ Centurion network and provides access control by interpreting a Wiegand data stream from third-party security input such as from biometric scanners.

The device can operate both stand-alone, controlling a small group of networked system devices, or as a network device that transmits information - like access attempts - to the rest of the network.

FEATURES

- Allows third-party Wiegand devices to trigger the TZ Centurion system
- Allows audit trail of authorized and unauthorized attempts in conjunction with specific applications
- Screw terminals for connection to third-party Wiegand devices
- Can be used as a stand-alone controller for a smaller network
- Powered from the TZ structured cable network

Anixter No.	Vendor No.	Description
419091	112074.01	TZ Centurion Wiegand Translator

Door Locking Hardware

TZ Praetorian Locking System

TZ Centurion Port Link

TZ - TELEZYGLOGY INC.



The TZ Centurion Port Link provides dynamic and cost-effective security, sensing and power expansion of the TZ Centurion System. These interconnect modules enable networking of TZ locking and environmental-monitoring devices.

The TZ Centurion Port Link provides a connection for one TZ device plus RS-485 and power connections for the continuation of the network. An onboard screw terminal supports the connection of two auxiliary inputs for devices such as temperature and door-status sensors, and two auxiliary outputs for accessories like in-cabinet task lighting and fans.

FEATURES

- Extends TZ network and connects additional devices
- Screw terminals for auxiliary I/O devices
- Interconnection of one device and extension or two devices at end of branch
- LED power indicator

Anixter No.	Vendor No.	Description
419092	112330.01	TZ Centurion Port Link

TZ Sensors

TZ - TELEZYGLOGY INC.



The TZ Contact Sensor is a magnetic reed switch. When properly installed it allows the connected TZ device to determine when a door is open or closed.

TZ Sensors are extremely cost-effective smart devices that provide environmental monitoring within the TZ Centurion network at the cabinet-enclosure level across a range of operating conditions: temperature, humidity, door contact and leak detection.

FEATURES

- The TZ Temperature Sensor measures the ambient temperature within the enclosure or cabinet; its temperature sensor circuit is designed to measure temperatures between 15°C to 60°C (5°F to 140°F)
- The TZ Relative Humidity Sensor contains a circuit designed to measure relative humidity between 5 percent and 95 percent
- The TZ Contact Sensor is a magnetic reed switch. When properly installed it allows the connected TZ device to determine when a door is open or closed
- The TZ Leak Detection Sensor is a sealed optical device which can detect the presence of liquids

Anixter No.	Vendor No.	Description
419093	112328.02	TZ Temperature Sensor
419094	112328.01	TZ Humidity Sensor
419095	112328.03	TZ Liquid Sensor
419096	112354.01	TZ Door Contact Sensor

Schlage Electronic Security

Schlage AD-Series Adaptable Electronic Locking Platform

SCHLAGE ELECTRONIC SECURITY



You can't predict what will happen tomorrow, but you can be ready for it, thanks to the new AD-Series from Schlage. This isn't simply a lock. It's a revolutionary new access control solution that's redefining the security industry. Designed from the ground up to be completely flexible, adaptable and scalable, the AD-Series is a perfect fit today and can be upgraded to meet your evolving needs in the future.

Flexible: With the AD-Series there are lots of options. Every opening can be customized to fit specific needs.

Adaptable: The modular design and open-architecture format lets the AD-Series adapt to any environment today and in the future.

Scalable: The AD-Series is an easy and affordable way to grow a security system and migrate to emerging technologies. The AD-Series uses common components from the popular Schlage mechanical locks, leveraging years of experience as the leading installed brand in the market. And with its patent-pending modular design, the AD-Series will meet the needs of end users now and well into the future.

There are currently 11 different reader heads (keypad, Proximity, Proximity + keypad, mag-stripe swipe, mag-stripe swipe + keypad, mag-stripe insert, mag-stripe insert + keypad, multitechnology, multitechnology + keypad, smart card, smart card + keypad) and four different communication methodologies available. The units are available with several functions, levers, finishes, cylinder types and keying types. Chassis type includes mortise, mortise deadbolt, cylindrical and exit trim.

Anixter No.	Vendor No.	Description
422521	AD-200-CY-70-PR	Access rights are housed on the lock - cylindrical style - 125 kHz Proximity reader
422522	AD-250-CY-70-MG	Access rights on the card - cylindrical style - magnetic-stripe reader
422523	AD-300-CY-70-PR	Networked hardwired - cylindrical style - 125 kHz Proximity reader
422524	AD-400-CY-70-PR	Networked wireless - cylindrical style - 125 kHz Proximity reader
422526	HHH	Handheld device for setup
422528	PIB300-2D	Panel interface board that supports up to two AD-300 Locks
422529	PIM400-TD2	AD400 panel interface board, 2-door
422530	ECK400	Wireless elevator-control kit
422532	GCK400	Wireless gate-control kit
422533	WRI400	Outdoor wireless reader interface
422536	WPR400-PRK	Wireless portable reader - 125 kHz Proximity reader

AD-300 series

SCHLAGE ELECTRONIC SECURITY



AD-Series electronic locks from Schlage are designed to be modular and provide more options to choose from, more functionality in the lock and more compatibility with existing systems. Its patent-pending modular design allows the lock to be customized to fit the needs of an application now, and can change to meet future needs without removing it from the door. To simplify installation, the AD-Series combines all the hardware components required at the door for a complete access control system into one integrated design that includes the electrified lock, credential reader, request-to-exit and -enter sensors, door position switch, tamper switch and more. The AD-300 has a number of features built in that are configurable in the field and a long list of items that can be monitored by access control software.

FEATURES

- Open Architecture platform panel interface options ensure seamless communication with your system
- Real-time communication between access control system and lock
- Field configurable Fail-Safe/Fail-Secure and other capabilities per code
- Available in cylindrical, mortise, mortise with deadbolt and exit trim
- A wide selection of credential readers and networking options to choose from

Anixter No.	Vendor No.	Description
483669	AD300-CY-70-PR- SPA-626	Grade 1 cylindrical, classroom/storeroom function, Proximity reader, Sparta lever, satin chrome
483670	AD300-CY-70-PRK-RHO-626	Grade 1 cylindrical, classroom/storeroom function, Proximity + keypad reader, Rhodes lever, satin chrome
483671	AD300-CY-70-MRK- RHO-626	Grade 1 cylindrical, classroom/storeroom function, multitechnology + keypad reader, Rhodes lever, satin chrome
483672	AD300-993M-70-PRK-SPA-626	Exit Trim — mortise, classroom/storeroom function, Proximity + keypad reader, Sparta lever, satin chrome

Door Locking Hardware

Schlage Electronic Security

AD-400 Series

SCHLAGE ELECTRONIC SECURITY



The AD-400 wireless networked lock gives you many of the key benefits of a hardwired access control system without the wires. This allows you to secure doors that were traditionally difficult to run wires to in the past and increase the security throughout your facility. The AD-400 has a number of features built in that are configurable in the field and a long list of items that can be monitored by access control software. Factory orderable options include choices of credential readers, chassis type, network configurations, locking functions, power options, lever styles and finishes. It also offers a wide selection of features that can be configured in the field to customize your openings.

FEATURES

- Open architecture platform
- Non-invasive installations for historic buildings and sensitive areas
- Secure encrypted data transmission
- Patent-pending wireless feature that enables efficient centralized lockdown in less than 10 seconds while still optimizing battery life up to two years
- Available in cylindrical, mortise, mortise with deadbolt and exit trim

Anixter No.	Vendor No.	Description
422529	PIM400-TD2	AD400 panel interface board, two door
483663	AD400-CY-70-MT- SPA-626	Grade 1 cylindrical, classroom/storeroom function, multitech reader, Sparta lever, satin chrome
483664	AD400-CY-70-MTK- RHO-626	Grade 1 cylindrical, classroom/storeroom function, multitechnology + keypad reader, Rhodes lever, satin chrome
483666	AD400-CY-70-MRK- RHO-626	Grade 1 cylindrical, classroom/storeroom function, multitechnology reader, Rhodes lever, satin chrome
483667	AD400-993M-70-MG- SPA-626	Exit Trim — mortise, classroom/storeroom function, Proximity reader, Sparta lever, satin chrome

CO-100 Series

SCHLAGE ELECTRONIC SECURITY



The CO-Series is the ideal solution for customers seeking the added security and convenience of electronic access control without the cost or complexity of a fully networked system. The CO-100 is a stand-alone lock that is manually programmable. User rights for the CO-100 are stored on the lock. Unique PIN codes can be assigned to each user. This minimizes the number of mechanical keys issued which protects the integrity of your key system. PIN codes can be easily added or deleted at anytime right at the door. The CO-100 from Schlage offers you many choices. Cylindrical, mortise, and exit trim chassis options are available as well as a wide variety of finishes and levers to suite with your existing hardware. Mechanical key override is standard and compatible with multiple cylinder types. The CO-Series is also compatible with many popular brands of exit devices.

FEATURES

- Manually programmable
- Up to 500 unique three- to six-digit PIN codes stored on the lock
- ANSI/BHMA A156.25 Grade 1 certified and UL 294 listed
- Classroom/storeroom function and office function available
- Normal, toggle, pass through and freeze credential attributes available

Anixter No.	Vendor No.	Description
483658	C0100-CY-70-KP-SPA-626	Grade 1 cylindrical, classroom/storeroom function, keypad, Sparta lever, satin chrome
483659	C0100-CY-70-KP-RHO-626	Grade 1 cylindrical, classroom/storeroom function, keypad, Rhodes lever, satin chrome
483660	C0100-MS-70-KP-SPA-626	Grade 1 mortise, classroom/storeroom function, keypad, Rhodes lever, satin chrome
483661	C0100-993M-70-KP-SPA-626	Exit Trim — mortise, classroom/storeroom function, keypad, Sparta lever, satin chrome

Schlage Electronic Security

CO-200 Lock

SCHLAGE ELECTRONIC SECURITY



The CO-200 is an economical solution for customers wishing to upgrade from mechanical to electronic access control. The CO-200 is computer programmable with user rights stored on the lock. User rights can easily be added or deleted at any time. This gives you improved control and eliminates the threat of lost or stolen keys. The CO-200 also allows you to retrieve audit trails. The CO-200 offers a variety of credential readers including: keypad only, magnetic stripe and Proximity. This gives you the flexibility if you have credentials already in use at your facility and options if you do not.

FEATURES

- Security that is more convenient and efficient than traditional mechanical solutions
- Reliable and durable solution that is ANSI/BHMA Grade 1-certified and UL 294 Listed
- Available with Proximity, magnetic stripe, keypad only, or dual card + PIN readers
- The ability to add up to 1,000 users at the lock through the Schlage handheld device
- Provides 1,000-event audit trail
- Available in cylindrical, mortise, mortise with deadbolt and exit trim
- Compatible with major brands of master-key systems and exit devices

Anixter No.	Vendor No.	Description
425505	CO-200-PRK	Cylindrical lock with Proximity and keypad

CO-200 Series

SCHLAGE ELECTRONIC SECURITY



The CO-Series is the ideal solution for customers seeking the added security and convenience of electronic access control without the cost or complexity of a fully networked system. The CO-200 is computer programmable with users' rights stored on the lock. The Handheld Device (HHD) used in conjunction with your access control software, allows you to easily add or delete users and retrieve audits. By issuing electronic credentials you can minimize the number of mechanical keys issued which protects the integrity of your key system. A variety of credential readers are also available including: keypad only, magnetic stripe and Proximity. The magnetic stripe and Proximity readers are also available with keypad for the added security of dual authentication.

FEATURES

- Computer programmable with audit trail
- Up to 2,000 users and up to 2,000 audits
- Up to 32 holidays and 16 time zones
- User rights stored on the lock
- Compatible with major brands of key systems and exit devices

Anixter No.	Vendor No.	Description
437556	HHD KIT	Handheld device preloaded with SUS application, HHD Kit also includes HH-USB Cable
483676	CO200-CY-70-KP- SPA-626	Grade 1 cylindrical, classroom/storeroom function, keypad, Sparta lever, satin chrome
483678	CO200-CY-70-MTK- RHO-626	Grade 1 cylindrical, classroom/storeroom function, Proximity + multitechnology reader, Rhodes lever, satin chrome
483679	CO200-MS-70-MTK- RHO-626	Grade 1 mortise, classroom/storeroom function, Proximity + multitechnology reader, Rhodes lever, satin chrome
483680	CO200-993M-70-PRK- SPA-626	Exit Trim — mortise, classroom/storeroom function, Proximity reader, Sparta lever, satin chrome

Door Locking Hardware

Schlage Electronic Security

40 and 70 Series - Full-featured Series Electromagnetic Locks

SCHLAGE ELECTRONIC SECURITY

The 40 and 70 Series electromagnetic locks are the integrator's and installer's answer to retrofit needs for mag locks. These locks are easy to stock, easy to select and easy to install. With the common templating and standard features, the MagForce line of retrofit makes sense for virtually every application. Both of these products come standard with Magnetic Bond Sensor and Door Status Monitor.

FEATURES

- Automatic dual-voltage selection
- Magnetic Bond Sensor/Door Status Monitor
- Exceeds BHMA standard of 500 lb. (40 Series) and 1,000 lb. (70 Series)
- 1,200 lb. holding force (70) and 700 lb. holding force (40)
- Double lock available for 70 series

40 SERIES - MAGFORCE LOCKS



Anixter No.	Vendor No.	Description
323128	40	Standard application in satin aluminum finish, exceeds BHMA standard of 500 lb. holding force

70 SERIES - MAGFORCE LOCKS



Anixter No.	Vendor No.	Description
323127	70	Standard application in satin aluminum finish, exceeds BHMA standard of 1,000 lb. holding force

We offer the complete line of 40 and 70 Series MagForce Locks. Please contact your sales representative for other available options.

M420/M450/M490 Magnetic Locks

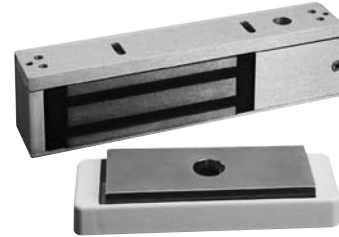
SCHLAGE ELECTRONIC SECURITY

The M420/M450/M490 magnetic locks are available for single, in-swinging or out-swinging doors. All models easily interface with electronic access control systems, automatic door operators and fire- or other hazard-sensing systems for egress and emergency egress. New dovetail design improves performance, provides greater installation flexibility and simplifies installation. An armature housing holds the armature in place, eliminating the noise and sagging known with armatures, increasing the overall reliability of the product. The M420/M450/M490 locks are UL Listed as an auxiliary lock for a three-hour fire-rated opening.

FEATURES

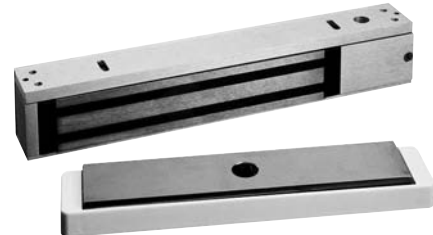
- Automatic dual voltage
- Built-in voltage-spike suppressor
- True Fail-Safe design for life safety
- Top-jamb version for in-swinging applications

M420 SERIES - MAGFORCE HIGH-SECURITY TRAFFIC CONTROL SERIES



Anixter No.	Vendor No.	Description
423312	M420	Single lock meets or exceeds BHMA 500 lb. hold-force rating
423313	M422	Double lock, meets or exceeds BHMA 500 lb. hold-force rating for each door leaf
423315	TJ420	M420 TJ mounting kit

M450 MAX SECURITY SERIES



Anixter No.	Vendor No.	Description
423317	M450	Single lock, meets or exceeds BHMA 1,000 lb. hold-force rating
423318	M452	Double lock, meets or exceeds BHMA 1,000 lb. hold-force rating per door leaf
423319	TJ450	M450 TJ mounting kit

Schlage Electronic Security

M490 HIGH-SECURITY SERIES



Anixter No.	Vendor No.	Description
423320	M490	Single lock, meets or exceeds BHMA 1,500 lb. hold-force rating
423322	M492	Double lock, meets or exceeds BHMA 1,500 lb. hold-force rating per door leaf
423325	M490G	Gate lock, meets or exceeds BHMA 1,500 lb. hold force
423327	TJ490	M490 TJ mounting kit

M490DE Series Delayed Egress Magnetic Locks

SCHLAGE ELECTRONIC SECURITY



The M490DE Series Delayed Egress Magnetic Lock is a self-contained unit, designed to meet the NFPA 101 Life Safety Code. It is an easy-to-install, cost-effective solution to life safety and security applications. Delayed egress is triggered by an internal "plunger switch," to cause a 15- or 30-second delay and audible sound. Onboard contacts are provided for reset and legal release.

FEATURES

- Automatic voltage selection
- Security alarm
- Onboard audible alarm and bi-color LED
- Fire alarm terminals

Anixter No.	Vendor No.	Description
423333	M490DE	Single lock, delayed egress, meets or exceeds BHMA 1,500 lb. hold-force rating

6000 Series Electric Strikes

SCHLAGE ELECTRONIC SECURITY



Schlage is the leading manufacturer of premium, heavy-duty electric strikes known for their reliability, durability and security. The 6000 Series is non-handed and furnished 24 V DC standard with 12 V DC and AC operation optional and 16 V solenoids available. Strikes are furnished Fail-Secure (FSE) standard, with Fail-Safe (FS) optional. The strike box is adjustable to compensate for any misalignment of the door or frame. "A" label for single doors and "B" label for double doors. Strikes meet the requirements of ANSI 156.5, Grade 1, 1992.

FEATURES

- Two-piece plug connectors are furnished for ease of installation and for removal during strike servicing
- Heavy-duty stainless steel construction
- Tested to over 250,000 cycles
- 1,500 lb. holding strength
- 70 lb. impact strength
- Limited lifetime warranty

Anixter No.	Vendor No.	Description
355037	6211US32D24VDFSE	Electric strike for use with mortise locks without deadbolt or cylindrical locks, stainless steel, Fail-Secure
484387	6211US32D24VDCFSE	Electric strike for use with rim exit devices, stainless steel, Fail-Secure
484388	6210US32D24VDCFSE	Electric strike for use with mortise locks without deadbolt or cylindrical locks, stainless steel, ANSI prep, Fail-Secure
484389	6211US32D12VDFSE	Electric strike for use with mortise locks without deadbolt or cylindrical locks, stainless steel, Fail-Secure

Door Locking Hardware

Schlage Electronic Security

PS 900 Series Power Supplies

SCHLAGE ELECTRONIC SECURITY

Schlage modular power supplies are UL 294 Listed and Class 2 rated for use with access control systems. The PS900 series features low-voltage DC, regulated, filtered power with universal 110/220 V AC input. The enclosure measures 12 in. x 14 in. x 4 in. with AC status indication on the outside cover. Plug-in option cards provide for simple fused outputs up to complex relay-controlled outputs and alarm relays for switched outputs.

FEATURES

- 12/24 V DC
- Field-selectable voltage
- Hinged cover with key lock
- 110/220 V AC input
- 2 A @ 12/24 V (PS902)
- 4 A @ 12/24 V (PS904)
- 6 A @ 12/24 V (PS906)

PS 902 POWER SUPPLY



The PS902 Power Supply accepts one optional distribution card, alarm-relay card and backup-battery card

Anixter No.	Vendor No.	Description
423334	PS902	2 amp @ 12/24 V DC
423335	900-BB	Battery-backup board

PS 904 POWER SUPPLY



The PS 904 Power Supply accepts two optional distribution cards and one battery-backup card

Anixter No.	Vendor No.	Description
423337	PS904	4 amp 12/24 V DC
423335	900-BB	Battery-backup board

PS 906 POWER SUPPLY

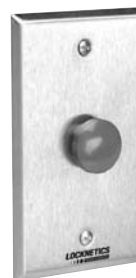


The PS906 Power Supply accepts three optional distribution cards and one backup-battery card

Anixter No.	Vendor No.	Description
423338	PS906	6 amp 12/24 V DC
423335	900-BB	Battery-backup board

700 Series General-Purpose Push Buttons

SCHLAGE ELECTRONIC SECURITY



700 Series General-Purpose Push buttons are only available in a momentary SPDT configuration.

FEATURES

- Medium-duty push button
- Momentary
- Single-gang
- Stainless steel
- Entry level

Anixter No.	Vendor No.	Description
233313	701RDEX	Engraved "Push to Exit" button
244007	701RD	Red button
244008	701BK	Black button

Schlage Electronic Security

600 Series Heavy-Duty Push Buttons

SCHLAGE ELECTRONIC SECURITY



600 Series Heavy-Duty Push Buttons are available in momentary SPDT or DPDT contact configurations. Push buttons have both normally open and normally closed contacts to provide control of a wide variety of electric circuits. Available in narrow stile for frame-mounting and standard size for single-gang box-mounting. Several size buttons are available to accommodate various applications.

FEATURES

- Heavy-duty 2 3/4 in. push button - three diameters available
- Single-gang and narrow stiles

Anixter No.	Vendor No.	Description
258691	625RDEX	Red "Push to Exit" button
258692	625RD	Red button
258693	625BK	Black button
258695	625GR	Green button

650 Series Heavy-Duty Keyswitch

SCHLAGE ELECTRONIC SECURITY



The 650 Series Heavy-Duty Keyswitches are available in momentary or maintained SPDT or DPDT contact configurations. Keyswitches have both normally open and normally closed contacts to provide control of a wide variety of electric circuits. Available in narrow stile for frame-mounting and standard size for single-gang box-mounting. Keyswitches operate with either a 1 1/8 in. or a 1 1/4 in. cylinder having a straight-type cam. The 650 does not include cylinder or keys.

FEATURES

- Heavy-duty keyswitch
- Maintained
- Momentary

Anixter No.	Vendor No.	Description
258687	653-04	SPDT, maintained single direction
258688	653-05	SPDT, momentary single direction

Anixter No.	Vendor No.	Description
258689	653-04-NS	SPDT, maintained action, narrow stile
258690	653-05-NS	SPDT, momentary action, narrow stile

672 TouchBar Request-to-Exit Bar (REX)

SCHLAGE ELECTRONIC SECURITY



The Schlage 672 TouchBar is a Request-to-Exit (REX) device used to release electromagnetic locks.

FEATURES

- Universal mounting system for hollow metal, aluminum and wood doors
- Heavy-duty aluminum extrusion with powder-coated zinc end
- Low profile for greater clearance through door
- Field-reversible/field-sizable
- DPDT monitoring switch

Anixter No.	Vendor No.	Description
323115	672	TouchBar, 36 in.

692 SmartBar Request-to-Exit Bar (REX)

SCHLAGE ELECTRONIC SECURITY



The Schlage 692 SmartBar incorporates two completely redundant and directionally opposed infrared-detection circuits which activate a standard DPDT relay that can release an electric locking device and provide a REX signal to an access control system.

FEATURES

- DPDT Relay
- Touch any point on the pushpad to release the locking device
- Universal mounting system for use with aluminum, hollow metal and wood doors
- Directionally opposed infrared-detection circuits

Anixter No.	Vendor No.	Description
323116	692	SmartBar, 36 in.

Door Locking Hardware

Schlage Electronic Security

Scramble Keypad

SCHLAGE ELECTRONIC SECURITY



The SERIII-W Scramble Keypad is a keypad reader designed to prevent onlookers from detecting the PIN code being entered. The LEDs display a randomly allocated set of numbers from 0 to 9. The position of the numbers changes every time the keypad is activated. Only the user standing directly in front of the keypad can see the scrambled digits.

FEATURES

- Very narrow viewing angle of the lighted, scrambled digits
- The membrane keypad is extremely durable
- The SERIII-W is provided with Wiegand communications protocol
- Individual PIN codes can be up to nine digits in length
- Robust polycarbonate enclosure
- Over 36 million unique permutations are available
- Also available in black

Anixter No.	Vendor No.	Description
341071	SERIII-W	Scramble keypad - gray
395698	SMK-2	Scramble keypad surface-mount kit - gray
395700	SPMK-2	Scramble keypad flush-mount kit - gray

XceedID Proximity Card Readers

SCHLAGE ELECTRONIC SECURITY



All Schlage multitechnology readers contain both 125 kHz Proximity and 13.56 MHz smart-card capability in one unit, making them the most flexible readers in the industry. With the ability to simultaneously read smart- and Proximity cards, customers are protected from obsolescence in the transition from Proximity technology to contactless smart-card technology. Even if customers want to continue using Proximity technology today, these multitechnology readers offer economical migration to the latest in smart-card technology on their budget or timeline. The smart capability of the multitechnology reader provides higher security when used with a smart credential. Each message between the card and the reader is digitally signed using Message Authentication Coding to ensure the integrity of the data. Additionally, smart-reader technology can be used in various applications, including logical access, cashless vending, and cafeteria services. These readers are compliant with all applicable ISO standards (14443).

FEATURES

- Multiple color options
- Modular design allows for easy, upgradeable changes in the field
- Manufactured with high-quality UV-resistant materials
- Tri-state LED (red, green, amber) provides a visual indicator and audio feedback representing status and activity information
- Accommodates interior, exterior, metal and non-metal installation environments
- Security/key management: several options to ensure the greatest choice between "open" or high credential security
- Lifetime limited warranty against defective workmanship and materials

Anixter No.	Vendor No.	Description
483013	PR10	125 kHz Proximity - mini-mullion
483014	SM10	13.56 MHz smart - mini-mullion
483015	MT11	Multitechnology - mullion
483017	MT15	Multitechnology - single gang
483018	MTK15	Multitechnology keypad - single gang

Multitechnology Proximity Cards

SCHLAGE ELECTRONIC SECURITY



Schlage multitechnology credentials are extremely flexible. Particularly useful during a transition from Proximity technology to smart technology, this card can be read by both Proximity readers and smart readers, which allows customers to economically migrate to the latest smart technology at their own pace. Multitechnology credentials from Schlage contain both 125 kHz Proximity and 13.56 MHz contactless smart-card capability in one unit, and are available in the newest technologies of today, including both MIFARE and MIFARE DESFire EV1 technology.

FEATURES

- Open architecture design is built on ISO 14443A standards, providing for a faster data transfer speed
- Utilizes MIFARE or MIFARE DESFire EV1 technology

Anixter No.	Vendor No.	Description
484391	9951	ISO - glossy white combo 125 kHz/13.56 MHz - HID Prox with MIFARE 1KB/8k bit smart - composite material
484392	9958	ISO - glossy white combo 125 kHz/13.56 MHz - HID Prox with MIFARE 4 KB/32 k bit smart - composite material
484394	9958	ISO - glossy white combo 125 kHz/13.56 MHz - HID Prox with MIFARE 4 KB/32 k bit smart - magnetic stripe - composite material

Schlage Electronic Security

Mini-mullion Proximity Reader

SCHLAGE ELECTRONIC SECURITY



The SXF1050 mini-mullion Proximity reader from Schlage is an attractive and cost-effective Proximity reader well suited for door-mullion or narrow-stile mounting. The SXF1050 is compatible with industry-standard Proximity technologies including HID Proximity, GE/CASI ProxLite, AWID, Lenel and XceedID Proximity.

FEATURES

- This reader is 125 kHz Proximity technology
- Compatible with HID Proximity, GE/CASI ProxLite, AWID, Lenel and XceedID
- Standard Wiegand interface
- Read ranges vary depending on the type of credential used

Anixter No.	Vendor No.	Description
341067	SXF1050	Mini-mullion 125 kHz Proximity reader

Mini-mullion Proximity Reader

SCHLAGE ELECTRONIC SECURITY



The SXF1050 mini-mullion Proximity reader from Schlage is an attractive and cost-effective Proximity reader well suited for door-mullion or narrow-stile mounting. The SXF1050 is compatible with industry-standard Proximity technologies including HID Proximity, GE/CASI ProxLite, AWID, Lenel and XceedID Proximity.

FEATURES

- This reader is 125 kHz Proximity technology
- Compatible with HID Proximity, GE/CASI ProxLite, AWID, Lenel and XceedID
- Standard Wiegand interface
- Read ranges vary depending on the type of credential used

Anixter No.	Vendor No.	Description
341067	SXF1050	Mini-mullion 125 kHz Proximity reader

Proximity Cards

SCHLAGE ELECTRONIC SECURITY



Provides 125 kHz Proximity completely compatible with HID Proximity readers. These cards easily fit in a wallet or may be used as a strapped or clipped ID badge.

FEATURES

- 125 kHz Proximity technology
- Compatible with most HID Proximity card formats up to 37 bits
- Compatible with most HID Readers
- Keyfob and PVC patch also available

Anixter No.	Vendor No.	Description
393781	SXF7410	26 bit standard Prox card, facility code 100, nonsequenced
423341	SXF7510	26 bit photo-ready Prox card, ISO, facility code 101, nonsequenced
423344	SXF7510 MS	ISO Proximity card with magnetic stripe

Multitechnology Wall-mount Reader

SCHLAGE ELECTRONIC SECURITY



The SXF1500 multitechnology wall-mount reader from Schlage is perfect for wall-mount installations and can be used as a sleek and unobtrusive unit, as well as for standard wall-mounted reader applications. The unique modular design allows easy, upgradable changes in the field if changes are required after installation. The default behavior in readers has PIV enabled with 75-bit format (200-bit format optional) for FIPS-201 compliance.

FEATURES

- Readers are both 125 kHz Proximity and 13.56 MHz contactless smart-card technologies. Meets both ISO 14443 and 15693
- Compatible with HID Proximity, most 13.56 MHz, GE/CASI ProxLite, AWID, Lenel, XceedID and more
- Tri-state LED (red, green, amber) and audible status alert
- Standard Wiegand interface
- Compatible with most 13.56 MHz credentials

Anixter No.	Vendor No.	Description
422537	SXF1500	Multitechnology reader, wall-mount

Door Locking Hardware

Schlage Electronic Security

Wall-mounted Proximity Reader

SCHLAGE ELECTRONIC SECURITY



The SXF1550 wall-mounted Proximity reader from Schlage is an attractive and cost-effective Proximity reader. The SXF1550 is compatible with industry-standard Proximity technologies including HID Proximity, GE/CASI ProxLite, AWID and XceedID Proximity.

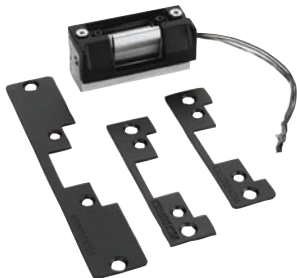
FEATURES

- 125 kHz Proximity technology
- Compatible with HID Proximity, GE/CASI ProxLite, AWID, Lenel, XceedID and more
- Standard Wiegand interface
- Read ranges vary depending on credential used

Anixter No.	Vendor No.	Description
393780	SXF1550	Single-gang wall-mount Proximity reader

5100 and 6000 Electric Strikes

VON DUPRIN



The Von Duprin Electric Strikes are designed and manufactured to meet the needs of locksmiths and security professionals for medium- and heavy-duty applications. The 5100 medium-duty electric-strike kit comes standard with three faceplates for hollow metal, wood and aluminum frames, an internal 12/24 V DC solenoid, an adjustable keeper and field-selectable Fail-Safe/Fail-Secure mode. The 6000 heavy-duty electric strikes feature all stainless steel construction, are nonhanded and available in 12 V or 24 V DC or AC. There are more than 20 different versions of the Von Duprin 6000 Series Strikes available to work with virtually all types of door hardware.

5100 MEDIUM-DUTY SERIES STRIKES

Standard features three faceplates for hollow metal, wood and aluminum doors, internal 12/24 V DC solenoid and 1,300 lb. holding strength

Anixter No.	Vendor No.	Description
393786	5100-3FP-695	Medium-duty electric strike - 695 bronze finish
395706	5100-3FP-689	Medium-duty electric strike - 689 sprayed-aluminum finish

6000 HEAVY-DUTY SERIES STRIKES



Anixter No.	Vendor No.	Description
393788	6112-32D-24VDC-FSE	Heavy-duty electric strike for use with rim exit devices on single doors - satin-aluminum finish

Surface-mount Electric Strike

VON DUPRIN



Finally, a surface-mounted universal strike from Von Duprin! As there are no frame alterations required, this product is sure to take the fear away from the installations of mortised electric strikes.

FEATURES

- Universal left hand/right hand - no door-frame alterations
- Field-selectable voltage input - 12-24 volts AC or DC
- Modular style plug-and-play connections
- Stainless steel construction with brushed finish
- UL1034 Burglary Resistant rating
- UL10C Fire Rating - in process
- Single part-number for rim devices
- Compatible with Von Duprin 98/99, 98/99XP, 33/35, 22, 24/25

Anixter No.	Vendor No.	Description
424105	6300	Surface-mount electric strike

Door Locking Hardware

Schlage Recognition Systems

Handkey II

SCHLAGE RECOGNITION SYSTEMS



Schlage Recognition Systems' Handkey II brings the security and convenience of biometrics to any access control application at an affordable price. The hand geometry reader verifies that a person, NOT their credential, has gained access to a sensitive area. As the worldwide leader in biometrics, there are more than 150,000 hand-geometry readers installed throughout the world.

FEATURES

- Eliminate the expense and hassle of card-based systems
- Fast, easy enrollment and use
- Easily networked, integrated with existing systems
- Unparalleled accuracy and reliability

Anixter No.	Vendor No.	Description
234241	HK-2	Hand Key II - 512 users
234245	EM-801	Memory expansion - 9,728 users
234246	EM-803	Memory expansion - 32,512 users
356840	EN-200	HK Ethernet communications module

FingerKey DX

SCHLAGE RECOGNITION SYSTEMS



Schlage Recognition Systems' full line of biometric products, which encompasses multiple core technologies, ensure you get the right solution to fit your security application. Fingerprint readers are a secure and lower-cost biometric alternative for access control points that have minimal traffic flow and small user populations. They are an ideal solution for securely gaining access to computer rooms, telco closets, document-control facilities, laboratories and other key or critical infrastructure points.

FEATURES

- High-security, low-cost solution
- Perfect for small user population
- Elegant design fits into any environment
- Durable optical-sensor design

- Easy integration into new and existing electronic access control systems
- Integrated card reader options allow for single reader installations
- Extremely flexible with a controllable LED bar and buzzer, plus configurable Wiegand and Clock-and-Data inputs and outputs

Anixter No.	Vendor No.	Description
323140	DX-2000	LCD, keypad
323141	DX-2100	LCD, keypad, HID Prox reader (integrated)
304716	DX-2200	LCD, keypad, HID iCLASS reader (integrated)
304718	FPM-500	Memory upgrade 250 to 500 users
304725	FPM-2000	Memory upgrade 250 to 2,000 users
304727	FPM-2000U	Memory upgrade 500 to 2,000 users
304728	FPE-100	Ethernet TCP/IP

Blizzard (ID3D-RW)

SCHLAGE RECOGNITION SYSTEMS



Ideally suited for the coldest climates and industrial environments, the Blizzard enclosure is constructed of heavy-gauge zinc-coated steel and features a weather-sealed keypad, low-temperature display and heated interior. Even though it protects from incidental rain and weather, the unit should be mounted under an enclosure or awning. The Blizzard enclosure is a fully integrated unit and comes complete with a hand-geometry reader and internal heater.

FEATURES

- -35°F to 120°F (-37°C to 49°C)
- Indirect exposure to rain and snow
- Best suited for extreme cold and potential vandalism-prone areas

Anixter No.	Vendor No.	Description
234243	ID3D-RW	Blizzard Handkey - 256 users
234250	EM-604	Memory expansion - 27,904 users
234249	EM-602	Memory expansion - 9,728 users
234247	EM-600	Memory expansion - 3,328 users
347975	TF-100	Transformer for outdoor heater

Schlage Recognition Systems

FX Enclosure

SCHLAGE RECOGNITION SYSTEMS



Constructed from high-impact ABS plastic, the unit provides a degree of protection against dusty, dirty or rainy environments. The enclosure has been designed so it can be added to an existing installation. When used with a heater-equipped (INT-HTR option) hand-geometry reader, it provides a comfortable heated platen against a cold climate.

FEATURES

- -20°F to 120°F (-29°C to 49°C)
- Provides significant protection from rain, sleet, snow, splashing water, falling dirt and windblown dust

Anixter No.	Vendor No.	Description
304735	HURCNE	Outdoor enclosure for F-Series hand readers
304736	INT-HTR	Outdoor platen heater - factory-installed option and cannot be field-installed

HandNet for Windows 2.0

SCHLAGE RECOGNITION SYSTEMS

HandNet for Windows 2.0 gives you networked access control that is easy to install, simple to use, effortless to administer and affordable. You'll enjoy complete door monitoring in real time for multiple sites. Remote sites can be monitored via modem or Ethernet. Every HandKey unit has a built-in door controller, so you can create an access control network by simply attaching a PC. You pay only for the software - there's no additional cost for networking up to 1,000 doors.

FEATURES

- Complete door access and monitoring
- Automatic hand-template management
- Real-time monitoring or audit trail mode
- Easy setup and administration

Anixter No.	Vendor No.	Description
304731	HN-2-T1	Up to five hand readers
304732	HN-2-T2	Up to 25 hand readers
304733	HN-2-T3	Unlimited hand readers

Door Locking Hardware

Interlogix

Request-to-Exit
INTERLOGIX



The RCR-REX is a dual-technology, Request-to-Exit sensor used for secure door egress and door access control. The RCR-REX combines the power of passive infrared and Doppler range-controlled radar technologies to provide the industry's most secure Request-to-Exit sensor.

FEATURES

- Dual relay outputs
- Wall- or ceiling-mount
- Built-in adjustable sounder for door position mounting
- Swing-open design allows easy adjustment
- Optional single-gang wall plate
- Includes mask for easy adjustment of PIR field of view
- Tamper switch detects device open

Anixter No.	Vendor No.	Description
327904	RCR-REX-W	Dual technology, DPDT, Form C, white
340562	RCR-REX-B	Dual technology, DPDT, Form C, black
340564	RCR-REX-G	Dual technology, DPDT, Form C, gray
340568	RCR-WP-W	Single-gang wall plate, 2.25 in. x 8.375 in., white
340570	RCR-WP-B	Single-gang wall plate, 2.25 in. x 8.375 in., black
340571	RCR-WP-G	Single-gang wall plate, 2.25 in. x 8.375 in., gray

Intelli-M Third-party Peripherals XceedID Cards and Readers

INFINIAS LLC



The XceedID product line provides both 125 kHz and 13.56 MHz cards and readers. The 7410, 7510 and 7610 credentials are HID compatible.

FEATURES

- XceedID readers (125 kHz Proximity and 13.56 MHz smart-card) and credentials (HID Proximity compatible, MIFARE and DESFire)

Anixter No.	Vendor No.	Description
393727	P-XCID-7410	Clamshell HID Prox compatible
393728	P-XCID-7510	ISO card HID Prox compatible
419903	P-XCID-7610	Keytag (classic) HID Prox compatible keytag
419906	P-XCID-9451	Clamshell MIFARE 1K byte/8k bit memory/14443 Xceed ID part number: 9451
417404	P-XCID-XF1050-B	Mini-mullion MIFARE reader (black - 13.56 MHz only)
419907	P-XCID-9520	ISO - glossy white ISO-X Lite secure access card (app only/14443)
417405	P-XCID-9551	ISO MIFARE card (8k bit memory/14443)
417414	P-XCID-9558	ISO MIFARE card (32k bit memory/14443)
419914	P-XCID-9651	MIFARE classic keytag (1K byte/8k bit memory/14443)
419918	P-XCID-XF1100-B	Mullion reader (black)
419919	P-XCID-XF1100-PIV-B	Mullion reader - FIPS201/PIV II-compliant (black)
419920	P-XCID-XF1500-B	Wall-mount reader (black)
419921	P-XCID-XF1550-B	Wall-mount reader (black - 125 kHz only)
419922	P-XCID-XF1560-B	Wall-mount reader (black - 13.56 MHz only)
419917	P-XCID-XF1060XX-B	Mini-mullion reader (black - 125 kHz only)
419923	P-XCID-XF2100-B	Mid-range reader (black)
419925	P-XCID-XF2110-B	Mid-range keypad reader (black)

Intelli-M, Third-party Peripherals, HID Cards and Readers

INFINIAS LLC



The following HID cards and readers products complete the Intelli-M system offering.

FEATURES

- Readers (HID Prox, iCLASS and multiCLASS) and credentials (125 kHz, 13.56 MHz and multitechnology)

Anixter No.	Vendor No.	Description
325259	A-PVC-1000	HID ISOProx II Card 26 bit
325265	A-PVC-1100	HID DuoProx II Card 26 bit
419902	A-PVC-2000	HID iCLASS 2k Smart Card with two application areas
320986	A-ACC-1000	HID ProxCARD II Clamshell 26 bit
419886	A-ACC-1351	HID ProxPass Active Vehicle Tag 26 bit
419887	A-ACC-2080	HID iCLASS Clamshell Smart Card 2k bit with two application areas
361339	A-AKT-1000	HID ProxKey II Keyfob 26 bit
419901	A-CRS-6005-DRK	HID ProxPoint Plus Reader - black
299610	A-CRS-6005-GRY	HID ProxPoint reader
325260	A-CRK-5355-GRY	ProxPro reader with keypad Intelli-M compatible
419893	A-CRS-OR10-DRK	HID iCLASS R10 Mullion-mount Reader - black
419894	A-CRS-OR40-DRK	HID iCLASS R40 Smart-Card Reader - black
419895	A-CRS-OR90-DRK	HID iCLASS R90 Long-range Smart-Card Reader - black
419896	A-CRS-OR40-DRK	HID iCLASS RK40 Smart-Card Reader - black
419897	A-CRS-ORP15-DRK	HID multiCLASS RP15 Smart-Card Reader - black
419898	A-CRS-ORP40-DRK	HID multiCLASS RP40 Smart-Card Reader - black
325261	A-CRS-5355-GRY	HID ProxPro Reader - charcoal
325262	A-CRS-5365-GRY	HID MiniProx Reader - charcoal
325263	A-CRS-5375-GRY	HID MaxiProx Long-range Reader - charcoal
419899	A-CRS-5395-DRK	HID ThinLine II Reader - black
325264	A-CRS-5395-GRY	HID ThinLine II Reader - charcoal
419900	A-CRS-5455-GRY	HID ProxPro II Reader - charcoal

Door Locking Hardware

infinias

Intelli-M, Third-party Peripherals, Magicard Photo ID Printers

INFINIAS LLC



Print full-color secure photo ID badges, membership cards, smart cards and access control badges. Choose the right Magicard printer for your needs.

FEATURES

- Magicard printers - four-color printer models to fit your usage needs. Pronto: for low-volume, hand-fed, single-sided printing; MC200 single-sided printer; MC200 Duo double-sided printer; Rio 2e for high-volume single-sided printing; Tango 2e for high-volume double-sided printing

Anixter No.	Vendor No.	Description
419889	A-BDG-3649-0001	Pronto - single-sided - hand-fed - card printer
419891	A-BDG-MA100YMCKO	Pronto - YMCKO dye film - 100 images
397555	A-BDG-MA300YMCKO	EN1 - YMCKO dye film, 300 images
397557	A-BDG-3633-0053	MC200 cleaning kit, 10 cards, one pen
397559	A-BDG-3633-0054	MC200 cleaning roller kit, five sleeves, one bar
419890	A-BDG-M3610-040A	30 mil CR80 no technology cards - pack of 100
448483	A-BDG-3633-0001	Enduro Duo Single-sided ID card printer
448484	A-BDG-3633-0021	Enduro Duo Dual-sided ID card printer
448485	A-BDG-3652-0001	Rio Pro Professional single-sided ID card printer
448486	A-BDG-3652-0021	Rio Pro DuoProfessional double-sided ID card printer
397556	A-BDG-MA250YMCKOK	Enduro/Rio Pro-YMCKOK dye film, 250 images
299606	A-BDG-CK1	Pronto-Cleaning Kit (five cards, one pen)
448490	A-BDG-ADNT	14 mil CR80 self-adhesive cards, 100 pack
448491	A-BDG-M9006-793A	30 mil CR80 no technology cards, 100 pack

Door Locking Hardware

Bioscrypt/Morpho

4G V-Flex Lite

BIOSCRYPT



The 4G V-Flex Lite is the smallest biometric form-factor in the 4G product lineup, making it ideal for mullion- or single-gang-mounting requirements. Also, this device is IP 65-rated, allowing for indoor and outdoor capabilities.

FEATURES

- Template storage capacity (5,000 in 1:N; 25,000 in 1:1)
- IP connectivity
- Compatible with 4G SecureControl I/O panel for additional security
- 500 DPI optical sensor

Anixter No.	Vendor No.	Description
444232	4GFXLS	4G V-Flex Lite with optical sensor
448684	4GFXLSNW	4G V-Flex Lite no Wiegand
448685	4GFXLSP	4G V-Flex Lite Prox with optical sensor
448687	4GFXLSPNW	4G V-Flex Lite iCLASS, MIFARE, DESFire with optical sensor
448689	4GFXLSONW	4G V-Flex Lite iCLASS, MIFARE, DESFire no Wiegand

V-Station-A

BIOSCRYPT



The V-Station-A authenticates users with dual-factor authentication, combining the power of biometrics with PIN numbers. PIN numbers can no longer be borrowed or given out to others, since they have to match an employee finger scan.

FEATURES

- Simple plug-and-play installation
- Industry's most accurate finger-scan algorithm (FVC 2002 and 2004)
- Generates, maintains and logs 4,096 time-stamped transactions
- Optional integrated Proximity or contactless smart-card reader
- Fast finger dual-factor verification
- Compatible with Bioscrypt's complete line of VeriSeries readers
- Integrated 80-character LCD display and numeric keypad
- Convenient VeriAdmin enrollment software

Anixter No.	Vendor No.	Description
349502	V-STATION-A-R	Finger-scan reader with keypad, CD
349503	DESKTOP-VN-A	V-Station-A mounted on a plastic stand, power supply and CD

4G V-Station

BIOSCRYPT



L-1 Enterprise Access Solutions division delivers the 4G V-Station fingerprint reader - built on the new 4G technology platform that transforms an access control device into a smart-security appliance through improved performance, usability and scalability. The 4G V-Station is equipped with state-of-the-art biometric and multifactor authentication, powerful onboard processing for rapid and accurate authentication, sophisticated storage, extensible memory, 802.11 wireless connectivity and full-size color LCD displays to keep employees and visitors informed with custom messaging.

FEATURES

- Largest template capacity in the industry (500,000 in 1:1; 10,000 in 1:N or up to 50,000 in 1:N with bins)
- Single-, two- or three-factor authentication; optional integrated card readers (Prox, iCLASS, or MIFARE/DESFire)
- Range of 500 dpi sensor options
- Field-replaceable sensors
- Backwards compatible
- Remote device management
- Full IP and PoE enabled (optional wireless LAN)
- Powerful administration software
- Flush-mounted
- "Quick-Tilt" access for easy maintenance
- Time and attendance ready
- Stand-alone door access control (SDAC) capabilities

Anixter No.	Vendor No.	Description
394715	4GSTH	iCLASS with optical sensors
395319	4GSTS	Base with optical sensors
395357	4GSTU1	Base with TCS1 sensors
395363	4GSTU1P	Proximity reader with TCS1 sensors
395365	4GSTSG	MIFARE/DESFire with optical sensors
395366	4GSTU1G	MIFARE/DESFire with TSC1 sensors
395369	4GSTSU1H	iCLASS with TCS1 sensors

Door Locking Hardware

Bioscrypt/Morpho

4G V-Flex

BIOSCRYPT



The 4G V-Flex is equipped with state-of-the-art biometric and multifactor authentication, powerful onboard processing for rapid and accurate authentication, sophisticated storage and extensible memory. 4G V-Flex combines reliability and performance with new advanced features to deliver a SMART security appliance with built-in flexibility to help secure any size premises.

FEATURES

- Large template storage capacity (10,000 in 1:N; 500,000 in 1:1)
- Single- or two-factor authentication
- Optional integrated card reader (Prox, iCLASS or MIFARE/DESFire)
- Range of 500 dpi sensor options
- Field-replaceable sensors
- Backward compatible
- Remote device management
- IP connectivity (LAN, WAN, PoE)
- Easy administration
- Flush- or recess-mounted
- Stand-alone door access control (SDAC) capabilities

Anixter No.	Vendor No.	Description
395371	4GFXS	Base with optical sensors
395372	4GFXU1	Base with TCS1 sensors
395375	4GFXSP	Proximity reader with optical sensors
395376	4GFXU1P	Proximity reader with TCS1 sensors
395379	4GFXSG	MIFARE/DESFire with optical sensors
395387	4GFXU1G	MIFARE/DESFire with TCS1 sensors
395390	4GFXSH	iCLASS with optical sensors
395391	4GFXU1H	iCLASS with TCS1 sensors

4G V-Station WR

BIOSCRYPT



Not every solution requires extreme-weather performance. When you need a versatile device for use in moderate outdoor conditions and cannot compromise on offering superior performance and usability, the 4G V-Station WR is the right solution for you. The weather resistant (WR) models have specialized components and a built-in hood that offers protection against certain outdoor elements.

FEATURES

- IP65 rated
- Built-in hood and specialized components for weather-resistant protection
- Largest template capacity in the industry (500,000 in 1:1; 10,000 in 1:N or up to 50,000 in 1:N with bins)
- Single-, two- or three-factor authentication; optional integrated card readers (Prox, iCLASS, or MIFARE/DESFire)
- 500 dpi sensor
- Backwards compatible
- Remote device management
- Full IP and PoE enabled (Optional wireless LAN)
- Powerful administration software
- Flush-mounted
- Time and attendance ready
- Stand-alone door access control (SDAC) capabilities

Anixter No.	Vendor No.	Description
420969	4GXSTS	Base with optical sensor
420973	4GXSTSP	MIFARE/DESFire with optical sensor
423259	4GXSTSG	MIFARE/DESFire with optical sensor
420975	4GXSTSH	iCLASS with optical sensor

4G V-Flex WR

BIOSCRYPT



Not every solution requires extreme-weather performance. When you need a compact device for use in moderate outdoor climates with powerful biometric capabilities, the 4G V-Flex WR is the right solution for you. The weather-resistant (WR) models have specialized components and a built-in hood that offers protection against certain outdoor elements.

FEATURES

- IP65 rated
- Built-in hood and specialized components for weather-resistant protection
- Large template storage capacity (10,000 in 1:N; 500,000 in 1:1)
- Single- or two-factor authentication
- Optional integrated card reader (Prox, iCLASS or MIFARE/DESFire)
- 500 dpi sensor
- Backwards compatible
- IP connectivity (LAN, WAN, PoE)
- Easy administration
- Flush- or recess-mounted
- Stand-alone door access control (SDAC) capabilities

Anixter No.	Vendor No.	Description
420977	4GFXS	Base with optical sensor
421114	4GFXSP	Proximity reader with optical sensors
421115	4GFXSG	MIFARE/DESFire with optical sensors
421116	4GFXSH	iCLASS with optical sensors

4G V-Station Extreme

BIOSCRYPT



Concerned about access control in the rain, sleet, snow or desert conditions? L-1's IP65-rated solution is built to address your concerns and perform in moderate to the most extreme outdoor conditions. Confidently deploy a biometric device created for organizations that cannot compromise on security regardless of the weather.

FEATURES

- IP65-rated for the most extreme environments including severe downpours, ice and snow
- Lumidigm sensor for consistent outdoor authentication capabilities
- Identify users consistently with wet, greasy, severely dry and cut or damaged fingers
- Fake fingerprint/anti-spoofing capabilities
- Wide temperature range for sub-zero climates and the hottest desert. (-25° to +70°C) -13° to +158°F
- Largest template capacity in the industry (500,000 in 1:1)
- Integrated card reader (Prox, iCLASS or MIFARE/DESFire) options
- 3.5 in. full-color LCD

Anixter No.	Vendor No.	Description
420978	4GESTV	Base with lumidigm sensor
420979	4GESTVP	Proximity reader with lumidigm sensor
420980	4GESTVH	MIFARE/DESFire with lumidigm sensor
420981	4GESTVG	iCLASS with lumidigm sensor

Continued on next page >>

Door Locking Hardware

HES

HES 1006

HES



The HES 1006 series is the strongest and most versatile electric strike available. It meets or exceeds every standard developed for electric strikes. With 27 different faceplate options, the 1006 can accommodate virtually every type of lockset on the market. The 1006 features an innovative dual-interlocking plunger design and heavy-duty, all-stainless steel construction. The 1006 features a sleek new keeper and 100 percent stainless steel cast case. Tested to exceed 3,000 lb. of static strength, 350 ft. lb. of dynamic strength and factory tested to exceed 1,000,000 cycles of operation, the 1006 is in a class of its own.

FEATURES

- Windstorm resistance-rated
- UL 10C fire-rated
- ANSI/BHMA Grade 1
- Field-selectable 12/24 V DC
- For use with cylindrical or mortise locksets
- Tamper-resistant design
- 27 faceplate options to choose from
- Five-year limited warranty

Anixter No.	Vendor No.	Description
394727	740090041025	Electric strike, with dual-interlocking plunger design and heavy-duty all-stainless steel construction

HES 4500

HES



The HES 4500 series is the first electric strike designed for installation in a 2 in. UL 10C fire-rated frames with 1/2 in. drywall penetration. The 4500 electric strike features a low-profile 1 3/8 in. depth, heavy-duty cast-stainless steel construction and horizontal adjustment for simple installation. Its strength is derived from a unique keeper pin locking design, enabling the 4500 to exceed the ratings of the frame, door and locking hardware. Designed for use with cylindrical and mortise locksets up to a 3/4 in. throw.

FEATURES

- UL 10C fire rated
- ANSI/BHMA Grade 1
- Field selectable 12/24 V DC
- For use with cylindrical or mortise locksets
- Tamper-resistant design
- Horizontal adjustment
- Five-year limited warranty

Anixter No.	Vendor No.	Description
394736	740090010458	Electric strike designed for installation in a 2 in. UL 10C fire-rated frame

HES 5000

HES



The HES 5000 series is a compact, high-performance electric strike designed for low-profile openings where there is limited space behind the jamb. This includes narrow-stile aluminum jambs and jambs with protruding glass inside. The field-selectable Fail-Safe/Fail-Secure unit is easy to install and works with 1/2 in. - 5/8 in. latchbolts.

FEATURES

- UL 1034 burglary-resistant rated
- ANSI/BHMA Grade 1
- Field-selectable Fail-Safe/Fail-Secure
- Field-selectable 12/24 V DC
- For use with cylindrical locksets
- Tamper-resistant design
- Compact design, 1 1/16 in. strike body depth
- Five-year limited warranty

Anixter No.	Vendor No.	Description
394729	740090040028	Compact high-performance electric strike, 12/24 V DC

HES 5200

HES



Designed with the installer in mind, the 5200 series raises the standard in adaptability for electric strikes. It features in-frame horizontal adjustability, is field-selectable Fail-Secure/Fail-Safe and accommodates 5/8 in. and 3/4 in. latchbolts.

FEATURES

- UL 1034, burglary-resistant listed
- ANSI/BHMA Grade 1
- Field-selectable Fail-Secure/Fail-Safe
- Field-selectable 12/24 V DC
- Tamper-resistant design
- Five-year limited warranty

Anixter No.	Vendor No.	Description
450014	740090043401	Compact high-performance electric strike, 12/24 V DC

HES 8000

HES



The HES 8000 series is a compact, high-performance electric strike featuring a unique concealed design for increased security. There is no cutting on the frame and vertical adjustability accommodates door sag and misalignment. Based on the 5000 series, the 8000 is unmatched for ease of installation and performance.

FEATURES

- No cutting on the frame required
- Vertical adjustability to accommodate for door sag
- Tamper-resistant design
- Field-selectable Fail-Secure/Fail-Safe
- Field-selectable 12/24 V AC/V DC

- Accommodates 1/2 in. to 5/8 in. cylindrical latchbolt
- Strike body depth 1 1/16 in.
- Five-year limited warranty

Anixter No.	Vendor No.	Description
394733	740090043838	Compact high-performance electric strike, 12/24 V AC/V DC

HES 8300

HES



The fire-rated, concealed 8300 series is a compact high-performance product for use with cylindrical locksets. Designed for fast, easy installation, the 8300 fits into a standard 1 in. ANSI/BHMA dustbox, with little or no modification to the frame. It offers vertical adjustability to accommodate door sag and misalignment.

FEATURES

- UL 10C fire-rated
- UL 1034 burglary-resistant listed
- ANSI/BHMA Grade 1
- No cutting on frame required
- Vertical adjustability to accommodate door sag and misalignment
- Field selectable Fail-Safe/Fail-Secure
- Works with 1/2 in. - 5/8 in. cylindrical latchbolt (5/8 in. with 1/8 in. door gap)
- Five-year limited warranty

Anixter No.	Vendor No.	Description
450015	740090043760	Concealed high-performance electric strike, 12/24 V AC/V DC

Door Locking Hardware

HES

HES 8500

HES



The HES 8500 series is the first concealed electric strike solution for mortise locksets. Designed for fast, easy installation, the 8500 fits into low-profile openings with no cutting into the face of the frame. The 8500 works with 3/4 in. mortise latchbolts.

FEATURES

- UL 10C fire-rated
- UL 1034 burglary-resistant listed
- ANSI/BHMA Grade 1
- No cutting into the face of the frame
- Field-selectable Fail-Safe/Fail-Secure
- Field-selectable 12/24 V DC
- Works with 3/4 in. mortise latchbolts
- Five-year limited warranty

Anixter No.	Vendor No.	Description
450017	740090010687	Concealed high-performance electric strike, 12/24 V AC/V DC

HES 9400

HES



The HES 9400 electric strike is completely surface-mounted with a unique 1/2 in. slim-line form that is ideal for 1/2 in. throw rim exit devices in steel, aluminum or wood frames. The 9400 is UL 1034 listed and exceeds ANSI/BHMA Grade 1 standards.

FEATURES

- UL 1034 burglary-resistant rated
- ANSI/BHMA Grade 1
- Completely surface-mounted
- Field-selectable Fail-Safe/Fail-Secure
- Field-selectable 12/24 V DC
- Works with up to 1/2 in. Pullman latch
- Five-year limited warranty

Anixter No.	Vendor No.	Description
450019	740090055732	Surface-mounted electric strike, 1/2 in. stainless steel housing

HES 9600

HES



The HES 9600 series is the only surface-mounted electric strike to be severe-windstorm rated. The 9600 works with exit devices in metal or wood jambs. The 9600 features an internally mounted solenoid and two stainless steel, independently operating locking mechanisms. The 9600 is easy to install, with all components encased in the 3/4 in. thick stainless steel housing, requiring no cuts to the jamb prior to installation.

FEATURES

- UL Listed to ANSI 250.12 severe windstorm
- UL 1034 burglary-resistant rated
- ANSI/BHMA Grade 1
- Field-selectable Fail-Safe/Fail-Secure
- Field-selectable 12/24 V DC
- Completely surface-mounted
- Works with up to a 3/4 in. Pullman latch
- Tamper-resistant design
- Five-year limited warranty
- Fire-rated 9500 version also available in Vendor Part No. 10550001

Anixter No.	Vendor No.	Description
394721	740090040790	Surface-mounted electric strike, 3/4 in. stainless steel housing

HES Integrated Products

HES



Now you can have your choice of genuine HID technology, Prox or iCLASS, with your favorite HES electric strike. HES Integrated Products combine HID access control reader electronics, a compact reader, a door-position switch and your choice of any HES electric strike in one box for easy installation and guaranteed compatibility.

FEATURES

- Available in Prox or iCLASS
- Standard Wiegand output
- Combo package for easy ordering includes:
 - Card reader
 - Electric strike with latchbolt monitor
 - Door-position switch
 - Preintegrated wiring for easy snap-together connections

Anixter No.	Vendor No.	Description
450021	740090017747	Electric strike and HID technology in a single box

SMART Pac III

HES



The SMART Pac III is an in-line power controller specifically designed to protect an electric strike from excessive voltage and power surges which can damage the electric strike.

FEATURES

- Purchase with HES electric strike and get a free upgrade on the strike warranty
- Continuous duty; reduces initial voltage by 25 percent after a fixed period of time, to provide cooler more efficient strike operation
- Accepts wide range of input voltage: 12-32 volts AC or DC
- Output 12 V DC or 24 V DC, depending on input voltage
- Supports Fail-Secure or Fail-Safe-configured electric strikes
- Built-in surge protection/voltage regulation
- Self-resetting fuse protects strike against overcurrent condition

Anixter No.	Vendor No.	Description
450020	740090056067	In-line power controller

Continued on next page >>

Door Locking Hardware

Securitron

M32 600 lb. Holding Force Magnalock

SECURITRON MAGNALOCK CORP



Application - 600 lb. holding force Magnalock with automatic dual voltage is recommended for applications where physical assault on the door is not expected, like access controlled interior rooms and secure areas within buildings.

SPECIFICATIONS

1. Holding force: 600 lb. [272 kg]
2. Current draw and voltage: 300 mA at 12 V DC; 150 mA at 24 V DC
3. Operating temperature: -40° to +140°F [-40° to +60°C]
4. Warranty: MagnaCare lifetime replacement warranty

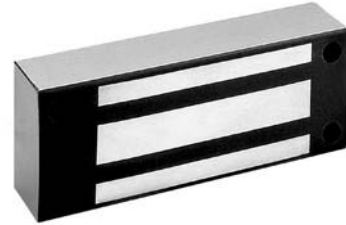
FEATURES

- Instant-release circuit
- Surface mounts easily with a minimum of tools
- Fully sealed electronics - tamperproof and weatherproof
- Architectural brushed-stainless steel finish
- Automatic dual voltage
- All ferrous-metal surfaces plated to ML specification
- Hardware accessories available to configure any opening type include mounting brackets, housings and dress covers
- 10 feet [3.05 m] of jacketed, stranded conductor
- Also available with new magnetic bond sensor and integrated door-position switch

Anixter No.	Vendor No.	Description
320943	M32	Magnetic lock, 600 lb. holding force, 12/24 V
320944	M32F	Face-mount, Magnalock
338851	M32B	Mag Bond sensor Magnalock
338852	M32FB	Mag Bond sensor, face-mount Magnalock
367184	M32FBD	Face-mount, Mag Bond sensor, door-position switch Magnalock
367185	M32FD	Face-mount, door-position switch Magnalock
367186	M32BD	Mag Bond sensor, door-position switch Magnalock
367187	M32D	Door-position switch Magnalock

M62 1,200 lb. Holding Force Magnalock

SECURITRON MAGNALOCK CORP



Application - 1,200 lb. holding force Magnalock with automatic dual voltage. Recommended for exterior and perimeter doors through which criminals could gain entrance to cause substantial economic loss.

SPECIFICATIONS

1. Holding force: 1,200 lb. [544 kg.]
2. Current draw and voltage: 250 mA at 12 V DC; 150 mA at 24 V DC
3. Operating temperature: -40° to +140°F [-40° to +60°C]
4. Warranty: MagnaCare lifetime replacement warranty

FEATURES

- Instant-release circuit - no residual magnetism
- Fully sealed electronics - tamperproof and weatherproof
- Mounted using steel machine screws into blind finishing nuts
- Architectural brushed-stainless steel finish (US32D/630)
- All ferrous-metal surfaces plated to MIL specification
- 10 feet [3.05 m] of jacketed, stranded conductor
- Automatic dual voltage - no field-adjustment required
- Also available with new magnetic bond sensor and integrated door-position switch

Anixter No.	Vendor No.	Description
235793	M62	Magnetic lock, 1,200 lb. holding force, 12/24 V
235794	M62F	Face-mount Magnalock
306132	M62FG	Face-mount conduit Magnalock
235795	M62G	Conduit Magnalock
306133	M62G-OS	Conduit offset strike Magnalock
306134	M62G-SS	Conduit split strike Magnalock
306135	M62-OS	Offset strike Magnalock
338856	M62B	Mag bond sensor Magnalock
338857	M62FB	Mag bond sensor face-mount Magnalock
338858	M62FBG	Face-mount conduit mag bond sensor Magnalock
338860	M62GB	Conduit mag bond sensor Magnalock
338862	M62GB-OS	Conduit mag bond sensor offset strike Magnalock
338863	M62GB-SS	Conduit mag bond sensor split strike Magnalock
338864	M62B-OS	Mag bond sensor offset strike Magnalock
338866	M62B-SS	Mag bond sensor split strike Magnalock
306141	M62-SS	Split strike Magnalock

Anixter No.	Vendor No.	Description
367202	M62FGBD	Face-mount, conduit, mag bond sensor, door-position switch Magnalock
367203	M62FGD	Face-mount, conduit, door-position switch, Magnalock
367204	M62FD	Face-mount, door-position switch Magnalock
367205	M62GBD	Conduit, mag bond sensor, door-position switch Magnalock
367210	M62FBD	Face-mount, mag bond sensor, door-position switch Magnalock
367211	M62BD	Bond sensor, door-position switch Magnalock
367212	M62D	Door-position switch, Magnalock

M68 1,200 lb. Holding Force Magnalock

SECURITRON MAGNALOCK CORP



Application - 1,200 lb. holding force Magnalock with automatic dual voltage. This model offers a built-in wire access chamber and new bracket-mount design for a unique method of installation. Recommended for exterior and perimeter doors through which criminals could gain entrance to cause substantial economic loss.

SPECIFICATIONS

1. Holding force: 1,200 lb. [544 kg]
2. Current draw and voltage: 300-325 mA (options) at 12 V DC / 150-175 mA (options) at 24 V DC
3. Operating temperature: -40° to +140°F [-40° to +60°C]
4. Warranty: MagnaCare lifetime replacement warranty

FEATURES

- Instant-release circuit - no residual magnetism
- Surface-mounts easily with mounting bracket using a minimum of tools
- Internal wire access chamber
- Mounted using steel machine screws into blind finishing nuts
- Brushed-aluminum finish
- All ferrous-metal surfaces plated to MIL specification
- Automatic dual voltage - no field-adjustment required
- Optional Senstat, door-position switch, antitamper and LED indicator
- UL Listed

Anixter No.	Vendor No.	Description
306142	M68	Magnalock
306143	M68D	Door position
306144	M68DL	Door position, LED
306145	M68DLS	Door position, LED, Senstat
306146	M68DLST	Door position, LED, Senstat, tamper

Anixter No.	Vendor No.	Description
306147	M68DLT	Door position, LED, tamper
306148	M68DS	Door position, Senstat
306149	M68DST	Door position, Senstat, tamper
306150	M68DT	Door position, tamper
306151	M68L	LED
306152	M68LS	LED, Senstat
306153	M68LT	LED, tamper
306154	M68S	Senstat
306155	M68ST	Senstat, tamper
306156	M68T	Tamper
306157	M68D-OS	Door position, offset strike
306158	M68DL-OS	Door position, LED, offset strike
306159	M68DLS-OS	Door position, LED, Senstat, offset strike
306160	M68DLST-OS	Door position, LED, Senstat, tamper, offset strike
306161	M68DLT-OS	Door position, LED, tamper, offset strike
306162	M68DS-OS	Door position, Senstat, offset strike
306163	M68DST-OS	Door position, Senstat, tamper, offset strike
306164	M68DT-OS	Door position, tamper, offset strike
306165	M68L-OS	LED, offset strike
306166	M68LS-OS	LED, Senstat, offset strike
306167	M68LT-OS	LED, tamper, offset strike
306168	M68S-OS	Senstat, offset strike
306169	M68ST-OS	Senstat, tamper, offset strike
306170	M68T-OS	Tamper, offset strike
306171	M68L-SS	LED, split strike
306172	M68LS-SS	LED, Senstat, split strike
306173	M68LT-SS	LED, tamper, split strike
306174	M68S-SS	Senstat, split strike
306175	M68ST-SS	Senstat, tamper, split strike
306176	M68T-SS	Tamper, split strike

MM15 E-Mag

SECURITRON MAGNALOCK CORP



Application - 4,000 lb. holding force dual-voltage, dual-current maglock for interior or perimeter doors where ultrahigh security and compact size are required.

SPECIFICATIONS

1. Holding force: 4,000 lb. [1814 kg]
2. AC current: 130 mA max. @ 12 V AC; 250 mA @ 24 V AC
3. DC current: 100 mA max. @ 12 V DC; 200 mA max. @ 24 V DC
4. Operating temperature: -40°F to 140°F [-40°C to 60°C]
5. Warranty: MagnaCare lifetime replacement warranty

Continued on next page >>

Door Locking Hardware

Securitron

(continued) MM15 E-Mag

FEATURES

- 4,000 lb. holding force provides an unmatched level of security
- Dual-voltage (12/24 V DC) and dual-current (AC/DC) operation
- Mounting plate provides easy and accurate installation
- Fail-Safe, but can be installed with a battery-backup power supply
- Optional door-position switch and antitamper switch
- Optional prep for use with 1/2 in. conduit
- Available dress cover finishes include stainless, black polished brass and satin brass
- Brackets and accessories to configure any opening
- Indoor use
- UL Listed

Anixter No.	Vendor No.	Description
338879	MM15	4,000 lb. electromechanical maglock, stainless steel
338880	MM15G	4,000 lb. electromechanical maglock, stainless steel, conduit option
338881	MM15DT	4,000 lb. electromechanical maglock, stainless steel, door-position/tamper-switches option
338882	MM15GDT	4,000 lb. electromechanical maglock, stainless steel, conduit/door-position/tamper-switches option

Stand-alone Battery Lock (SABL)

SECURITRON MAGNALOCK CORP



Engineered for high-traffic access control, SABL is perfect for new construction, or retrofitting educational facilities, commercial buildings and hospitals. Tampering with, or even destroying, the keypad will not release the door.

SPECIFICATIONS

1. Batteries: six AA alkaline batteries (included)
2. Operating temperature: -22° to +158°F [-30° to +70°C]
3. Warranty: MagnaCare lifetime replacement warranty

FEATURES

- Based on the award-winning and popular DK-26 keypad programming
- Six AA batteries (included) tested to over 100,000 cycles, two-year average battery life
- Fits in a standard ANSI 2 3/4 in. backset
- Weatherproof keypad with true 10-digit functioning
- Yale Grade 1 lock, "Freewheeling" and vandal resistant
- Non-handed, available with PB handle (standard), or AU handle (26D only)
- 55 users codes, two passage codes and two lockout codes
- Request-to-Exit (REX) input

- Keyways available:
 - KIL (Key In Lever) format - Sargent LA, Yale Y8, Schlage SC1
 - IC (Interchangeable Core) format - Best IC Core Prep (cylinder not included)
 - RC (Removable Core) format - ASSA, Medeco, Sargent, Corbin Russwin, Schlage SI

- Four attractive architectural finishes available

- Optional privacy function

Anixter No.	Vendor No.	Description
306192	SABL-26D-ASAU	With ASSA RC and AU handle in brushed chrome finish
306193	SABL-26D-MDAU	With MEDECO RC and AU handle in brushed chrome finish
306194	SABL-26D-CRAU	With CORBIN RUSSWIN RC and AU handle in brushed chrome finish
306195	SABL-26D-SC1	With Schlage cylinder in brushed chrome finish
306196	SABL-26D-SIAU	With Schlage RC and AU handle in brushed chrome finish
306197	SABL-03-SC1	With Schlage cylinder in bright brass finish
306198	SABL-26-SC1	With Schlage cylinder in bright chrome finish
306199	SABL-10B-SC1	With Schlage cylinder in oil rubbed bronze finish
306200	SABL-26D-SGT	With Sargent LA cylinder in brushed chrome finish
306201	SABL-26D-SGAU	With Sargent removable core and AU handle in brushed chrome finish
306202	SABL-03-SGT	With Sargent LA cylinder in bright brass finish
306203	SABL-26-SGT	With Sargent LA cylinder in bright chrome finish
306204	SABL-10B-SGT	With Sargent LA cylinder in oil rubbed bronze finish
306205	SABL-26D-YALE	With Yale cylinder in brushed chrome finish
306206	SABL-03-YALE	With Yale cylinder in bright brass finish
306207	SABL-26-YALE	With Yale cylinder in bright chrome finish
306208	SABL-10B-YALE	With Yale cylinder in oil rubbed bronze finish
306209	SABL-26D-BEST	With Best Prep. no cylinder in brushed chrome finish
306210	SABL-26D-BTAU	With Best Prep. no cylinder and AU handle in brushed chrome finish
306211	SABL-03-BEST	With Best Prep. no cylinder in bright brass finish
306212	SABL-26-BEST	With Best Prep. no cylinder in bright chrome finish
306213	SABL-10B-BEST	With Best Prep. no cylinder in oil rubbed bronze finish

GL1 2,000 lb. Gate Lock

SECURITRON MAGNALOCK CORP



The GL1 electro-mechanical gate lock is designed to secure a wide variety of vehicle and pedestrian gate applications where security and weather resistance are required. The GL1 functions equally well in both electrically and manually operated gate installations and can be used for swing gates, sliding gates, stock cage gates or other applications.

SPECIFICATIONS

1. Holding force: 2,000 lb.
2. 12 volts
 - Initial (peak): (~2.0 sec.) @870 mA; Reduced: 290 mA
3. 24 volts
 - Initial (peak): (~2.0 sec.) @720 mA; Reduced: 170 mA
4. Warranty: MagnaCare lifetime replacement warranty

FEATURES

- 2,000 lb. holding force
- Operates under preload up to 100 lb.
- Automatic dual voltage; no field-adjustment required
- Fail-Secure convertible to Fail-Safe
- Manual key override (right or left hand)
- Self-aligning receiver (+/- 1/2 in. horizontally and vertically) helps compensate for gate misalignment and sag
- Latch-status monitor switch (SPDT)
- Tamperproof cast-aluminum housing
- Heavy wall 1/2 in. inside diameter threaded steel coupling
- Hardened steel latch
- Surface mount
- Black powder coated finish
- Weather resistant

Anixter No.	Vendor No.	Description
338884	GL1	Gate lock 2,000 lb.

Flex-mount Gate Lock Bracket Kits for M62FG and GL1

SECURITRON MAGNALOCK CORP



The Flex-mount Bracket System is an intuitive set of mounting brackets designed exclusively for use with the 1,200 lb. M62FG Magalock and the 2,000 lb. GL1 Gate lock. Using preformed post channels and plates of varying lengths, a professional looking high-security gate lock mounting platform can be assembled in minutes without special tools.

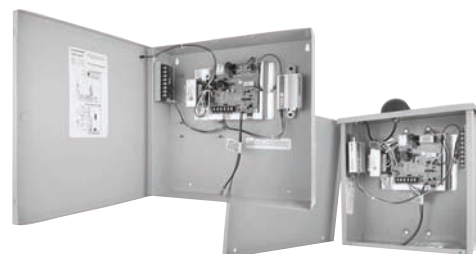
FEATURES

- Preconfigured kits include all lock-mounting hardware and post shims
- Post brackets are predrilled
- 8 in. tall x 3/16 in. thick zinc-plated steel provides durability and long life
- Lock and strike brackets are reversible, doubling the mounting variations
- Allows simple bolt-on installation, or the entire system can be welded
- Allows superior adjustability of lock and strike before final welding
- Permits electronics to be mounted on either the fence post or gate post

Anixter No.	Vendor No.	Description
394094	FMK-SL	Flex-mount bracket kit, sliding gate
394096	FMK-SW	Flex-mount bracket kit, swinging gate
394097	FMB9-4	Flex-mount post shim brackets, pack of four

CCM-1 Cellular Control Module for Electronic Locks

SECURITRON MAGNALOCK CORP



Today, it no longer matters where you are in relation to your important business assets. Now you can use a cell phone or Internet connection to take complete control of those assets through virtually any electric gate or lock. Securitron's Cellular Control Module (CCM-1) is a self-contained cellular-based access control system that is easy to install. The system is compatible with other access control devices and opens up a world of remote control and entry possibilities. Ideal for any single point of access.

Continued on next page >>

Door Locking Hardware

Securitron

(continued) CCM-1 Cellular Control Module for Electronic Locks

SPECIFICATIONS

1. Operating temperature: Without battery backup -22° to +140°F [-30° to +60°C]; With battery backup: -4° to +122°F [-20° to +50°C]
2. Current draw: (12 V DC) NOTE: Current draw does not include locking device
3. Cellular components: Up to 30 mA at rest, up to 95 mA operating
4. Power supply: Maximum 1 amp load
5. Power-supply dimensions: Indoor (NEMA-1) - 14 1/4 in. x 14 1/4 in. x 4 1/16 in.; outdoor (NEMA-3R) - 12 1/8 in. x 13 5/8 in. x 4 11/16 in.

FEATURES

- Create custom access codes and time expirations
- Review and manage access activity and history
- Receive immediate notification of activity at all openings
- Cell phone and Internet driven
- One digital relay output - 2 amp maximum
- Three inputs (REX, auto-relock and lock monitoring)
- Use with any existing access control device
- Works with any gate operator or electric lock
- No software necessary
- Indoor or outdoor operation
- 110 V AC/12 V DC 1 amp linear power supply included

Anixter No.	Vendor No.	Description
394086	CCM-1	Cellular control module / 1 A power supply (indoor-mounting only)
394087	CCM-1N	Cellular control module / 1 A power supply, NEMA-3R outdoor-rated

UnLatch Strike (UNL)

SECURITRON MAGNALOCK CORP



UnLatch is for any application where an electric strike would be used for a cylindrical/tubular lockset. UnLatch supports full deadlatch function, releases under pre-load and includes a latch-status monitoring output.

SPECIFICATIONS

1. Current draw: 12 V DC-40 mA continuous, minimum 300 mA when operating; 24 V DC-40 mA continuous, minimum 200 mA when operating
2. Higher capacity supply (1-3 amps) is recommended for startup inrush to achieve best operation under preload
3. Operating temperature: -20° to +125°F [-29° to +52°C]
4. Warranty: MagnaCare lifetime replacement warranty

FEATURES

- Available in polished brass (US3)
- Fits standard ANSI 4-7/8 in. strike cutout
- No cutting on the jamb required

- Motorized, no solenoids
- Fully concealed installation
- Maintains dead-latch function at all times
- Continuous duty
- Releases under preload
- Latch-status sensor is standard (SPDT)
- UL Listed

Anixter No.	Vendor No.	Description
235858	UNL-12	For cylindrical locks, 12 V DC
235859	UNL-24	For cylindrical locks, 24 V DC
306177	UNL-12-US3	12 V DC, polished brass finish
306178	UNL-24-US3	24 V DC, polished brass finish
306179	FSUNL-12	Fail-Safe/Fail-Secure UnLatch module, 12 V DC
306180	FSUNL-24	Fail-Safe/Fail-Secure UnLatch module, 24 V DC

Mortise UnLatch Strike (MUNL)

SECURITRON MAGNALOCK CORP



Mortise UnLatch is for any application where an electric strike would be used for a mortise-type lock. The Mortise UnLatch includes field adjustability for latch and deadlatch positions, releases under preload and includes a latch status-monitoring output.

SPECIFICATIONS

1. Current draw: 12 V DC-40 mA continuous, minimum 700 mA when operating; 24 V DC-40 mA continuous, minimum 500 mA when operating
2. Higher capacity supply (1-4 amps) is recommended for startup inrush to achieve best operation under preload
3. Operating temperature: -20° to +125°F [-29° to +52°C]
4. Warranty: MagnaCare lifetime replacement warranty

FEATURES

- Available in polished-brass (US3)
- Fits standard ANSI 4-7/8 in. strike cutout
- No cutting on the jamb required
- Motorized, no solenoids
- Fully concealed installation
- Maintains dead-latch function at all times
- Continuous duty
- Releases under preload
- Latch status-sensor is standard
- One model works with most North American mortise locks (Sargent 7800 and 8200 require tab kit model #STK-1 for retrofit installations)
- UL Listed

Anixter No.	Vendor No.	Description
306181	MUNL-12	12 V DC
306182	MUNL-24	24 V DC
306183	MUNL-12-US3	12 V DC, polished brass
306184	MUNL-24-US3	24 V DC, polished brass
306185	STK-1	Retrofit tab kit for Sargent 7800 and 8200

Touch Sense Bar (TSB-3)

SECURITRON MAGNALOCK CORP



The Touch Sense Bar is for use on magnetically locked, non-fire-rated doors. Touching the bar, even through light gloves or clothing, trips an electronic sensor which releases the lock. For indoor use only, the TSB-3 can be installed on metal, aluminum, or wood frame doors of all types. Meets "no special tools or knowledge" code requirements.

SPECIFICATIONS

1. Current draw: 40 mA at rest, 25 mA releasing
2. Voltage: 12 or 24 V DC
3. Operating temperature: +32° to +110°F [0° to +43°C]
4. Warranty: MagnaCare lifetime replacement warranty

FEATURES

- Three standard lengths: 36 in., 42 in. or 48 in.
- Can be field cut to accommodate nonstandard openings up to 48 in. [1,219 mm]
- Activates a DPST 2 amp-rated relay when touched (no mechanical movement) which will allow free egress or initiate the delay on an exit delay timer
- Backup push button
- 16 ft. [4.8 m] 22 AWG 6 conductor cable and stainless steel armored door cord are included
- Operates on either 12 or 24 V DC
- UL Listed

Anixter No.	Vendor No.	Description
235830	TSB-3CL	Touch Sense bar, aluminum finish, 36-in., indoor only
306188	TSB-3CL-42	Clear 42 in.
306189	TSB-3CL-48	Clear 48 in.
235832	TSB-3BK	Black 36 in.
306190	TSB-3BK-42	Black 42 in.
306191	TSB-3BK-48	Black 48 in.

DK-11 Digital Keypad

SECURITRON MAGNALOCK CORP



The DK-11 is a one-piece unit designed for lower security requirements. While primarily intended for indoor operation, an optional rain cover (WCC) and gasketed backbox (WBB) allow reliable use for exterior areas not exposed to direct rain.

SPECIFICATIONS

1. Current draw: 70 mA
2. Voltage: 12 or 24 V DC
3. Operating temperature: +32° to +110°F [0° to +43°C]
4. Warranty: MagnaCare lifetime replacement warranty

FEATURES

- Stainless steel backplate with 12 keys (10 digits plus "*" and "#" keys)
- One-piece digital keypad specifically designed for control of electric locks
- Single-gang, stainless steel plate with plastic backbox
- Includes four user code capability which is programmable from the keypad
- 5 amp SPDT timed, control relay output
- Wiegand output available
- Both LEDs also provide programming prompt
- Red and green LEDs are visible indicators
- Optional weather cover available
- Request-to-Exit (REX) input

Anixter No.	Vendor No.	Description
235857	DK-11	Digital keypad single-gang
306214	WCC	Weather cover single-gang
306215	WBB	Gasketed backbox single-gang

DK-26 Digital Entry System

SECURITRON MAGNALOCK CORP



SPECIFICATIONS

1. Current Draw:
 - 7 mA at rest, 160 mA active, 12 V AC or V DC
 - 20 mA at rest, 190 mA active, 24 V AC or V DC
2. Voltage: 12 or 24 V DC

Door Locking Hardware

Securitron

(continued) DK-26 Digital Entry System

- Operating temperature: CPU +32° to +158°F [0° to +70°C]
- Keypad: -22° to +158°F [-30° to +70°C]
- Shipping weight: 5.0 lb.
- Warranty: MagnaCare lifetime replacement warranty

FEATURES

- Cast-stainless steel with 11 EPDM rubber keys
- Weatherproof and vandal resistant - tampering with, or even destroying, the keypad will not release the door
- True 10-digit operation (keys are not paired)
- Wiegand output available
- Digital keypad system circuit board mounts in a plastic enclosure and provides for 59 multiple users, expandable to 119
- User code and/or hard code disable feature
- 5 amp DPDT relay output for lock control and alarm shunt, camera call-up or other device interface, REX input
- 16 ft. [4.8 m], 12 conductor, 22-gauge keypad cable
- Three LEDs and a bell button

APPLICATIONS

The DK-26 keypad is a digital keypad system designed for medium-/high-security control of electric locks. It consists of two components: the narrow stile keypad and the CPU board. The rugged stainless steel keypad is fully weatherproof and can be mounted outdoors and in most environments.

Anixter No.	Vendor No.	Description
235824	DK-26SS	Digital keypad system, surface-mount, 59 users, narrow stile, weatherproof, outdoor
394063	DK-26BK	Digital keypad system narrow stile black, 59 users
394064	DK-26SSXB	DK-26 with expansion circuit board, stainless, 119 users
394065	DK-26BKXB	DK-26 with expansion circuit board, black, 119 users

PB Series Push Button

SECURITRON MAGNALOCK CORP



Anixter No.	Vendor No.	Description
394067	PBA	1 1/2 in. round alternate, DPST, includes green and red buttons, illuminated
235850	PB	1 1/2 in. round momentary, DPST, includes green and red button, illuminated

PB2 Series Push Button

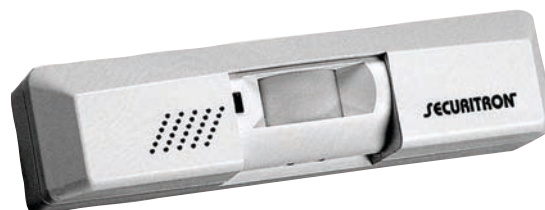
SECURITRON MAGNALOCK CORP



Anixter No.	Vendor No.	Description
235851	PB2	Push button, single gang, 2 in., "Push to Exit," illuminated, green, red and blue lenses included
394073	PB2-R	2 in. square momentary, DPDT, green button, illuminated
394074	PB22-R	2 in. square momentary, DPDT, includes green, red, and blue ADA lenses, illuminated
394075	PB2H	2 in. square momentary, SPDT, blue button, illuminated, handicap
235852	PB2E	2 in. square momentary, SPDT, includes green, red, and blue ADA lenses button

XMS Exit Motion Sensor

SECURITRON MAGNALOCK CORP



The XMS passive infrared Request-to-Exit device is a motion detector specifically designed to reliably release magnetic locks. A person approaching the door is "seen" by the motion detector just before reaching the door.

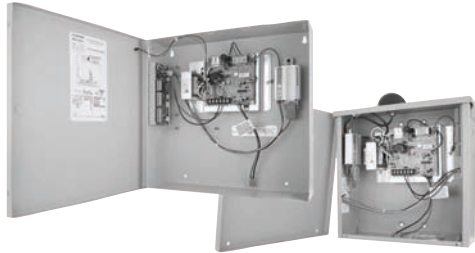
FEATURES

- Passive infrared Request-to-Exit device
- Designed to reliably release magnetic locks
- Automatically cuts power to the lock, allowing the individual to exit without even realizing that the door is secured

Anixter No.	Vendor No.	Description
235860	XMS	Exit motion sensor, passive infrared, Request-to-Exit output

CCM-2 Cellular Control Module for Wiegand Keypads and Readers

SECURITRON MAGNALOCK CORP



Now you can use a cell phone or Internet connection to take complete control of any existing Wiegand keypad or card reader. Introducing Securitron's Cellular Control Module (CCM-2), the only cellular Wiegand interface on the market today. Once installed, CCM-2 converts any Wiegand (or proprietary protocol) keypad or reader to 100 percent cellular.

Requests for entry from any Wiegand device equipped with the CCM-2 are routed via the cellular network to the CelAccess automated-control center for verification and authorization. Unlike any other Wiegand-based systems, the CCM-2 eliminates the need for expensive wiring and control panels.

FEATURES

- Ready out of the box: Easy installation with any brand of Wiegand keypad/reader entry system
- Easy-to-use Web interface for managing access codes and card IDs
- Full reporting of each request for entry and action taken
- Programmable triple-relay output - 1 amp maximum per relay
- Four-digital inputs (REX, auto relock, alarm monitoring + extra digital input)
- No software necessary
- Expansion boards - each with four digital inputs - are available to control additional openings
- Indoor or outdoor operation
- 110 V AC/12 V DC 1 amp linear power supply included

Anixter No.	Vendor No.	Description
394092	CCM-2	Cellular control module 1 A power supply, indoor-mounting only
394093	CCM-2N	Cellular control module 1 A power supply NEMA-3R outdoor rated

Boxed Power Supply (BPS, BPSH)

SECURITRON MAGNALOCK CORP



Recommended where an interface with a fire-alarm system or battery backup is needed. The BPS linear power supply delivers more current than PSPs or PMs, and all BPS models are UL Class 2 Listed, allowing for wire runs without the use of conduit from power supply to door. The BPSH series operates with 220 V AC.

FEATURES

- One, four or eight separate 2A polyswitch output circuit breakers based on model
- LEDs monitor zone status (voltage, no voltage)
- Slide switches connect or disconnect load from power
- Internal capability of charging optional 12 or 24 V DC sealed lead acid-gel backup batteries while operating the DC load (battery not included)
- Complete! Requires only 110 V AC to the fused input (BPS)
- Rugged steel enclosure
- Provided with terminals, for fire-alarm relay connection, allowing release of all devices upon fire-alarm activation
- Clean linear power for flawless operation with all sensitive active electronic components
- UL Listed

BPS

Anixter No.	Vendor No.	Description
235835	BPS-12-1	12 V DC, 1 amp, 1 output, boxed, EIR
306226	BPS-12-45	12 V DC - 4.5 amp
306217	BPS-12-6	12 V DC - 6 amp
306232	BPS-24-3	24 V DC - 3 amp
306234	BPS-24-6	24 V DC - 6 amp
306235	BPS-24-10	24 V DC - 10 amp

BPSH

Anixter No.	Vendor No.	Description
306236	BPSH-12-1	12 V DC - 1 amp 220 V AC
306237	BPSH-12-3	12 V DC - 3 amp 220 V AC
306238	BPSH-12-45	12 V DC - 4.5 amp 220 V AC
306239	BPSH-12-6	12 V DC - 6 amp 220 V AC
306240	BPSH-12-9	12 V DC - 9 amp 220 V C
306241	BPSH-12-15	12 V DC - 15 amp 220 V AC
306242	BPSH-24-1	24 V DC - 1 amp 220 V AC
306243	BPSH-24-2	24 V DC - 2 amp 220 V AC
306244	BPSH-24-3	24 V DC - 3 amp 220 V AC
306245	BPSH-24-4	24 V DC - 4 amp 220 V AC
306246	BPSH-24-6	24 V DC - 6 amp 220 V AC
306247	BPSH-24-10	24 V DC - 10 amp 220 V AC

Continued on next page >>

Door Locking Hardware

Securitron

Dual-voltage Boxed Power Supply

SECURITRON MAGNALOCK CORP



The new BPS-12/24-1 provides the cleanest linear power available and is recommended for use with sensitive electronic safety and security components. Dual output 12 or 24 V DC is field selectable via the clearly marked toggle switch. The BPS-12/24-1 is UL Class 2 Listed, allowing for wire runs without the use of conduit from the power supply to the door.

FEATURES

- Supplies one full amp continuous current output, even while charging backup batteries
- SPDT AC monitoring output allows for remote monitoring of the power supply's 110 V AC input
- Sealed lead acid-gel battery charging capability (battery not included)
- LED indication (AC and DC) showing power-supply status
- Polyswitch-type breakers allow for large short-duration inrush current if batteries are installed
- Sealed lead acid-gel battery-charging capability
- MagnaCare lifetime replacement warranty

Anixter No.	Vendor No.	Description
367262	BPS-12/24-1	Power supply 12/24 V DC-1 A
367265	BPSH-12/24-1	Power supply 12/24 V DC -1 A, 220 V AC

Concealed Electrical Power Transfer

SECURITRON MAGNALOCK CORP



FEATURES

- Mortises into the edges of the door and frame
- Tamper resistant. No exposed openings prevents foreign objects from reaching the wires or jamming the device
- All-metal construction including backboxes - no plastic
- 10-wire configuration includes two 18-gauge wires for higher-current devices
- Available with Cat 5e and ElectroLynx-compatible connectors
- Four architectural finishes: US32, US04, US10, US10B
- Installs above second hinge

- 7/8 in. knockouts on backboxes accommodate EMF-type fittings
- Tested to 1,000,000 cycles
- Will only function with butt hinges - up to 6 in.
- Will not work on center-hung or balanced doors

Anixter No.	Vendor No.	Description
450330	CEPT	Concealed electrical power transfer

Electrical Power Transfer

SECURITRON MAGNALOCK CORP



FEATURES

- Installs in the door and frame edges
- Flexible steel shield protects wires - 3/7 in. [9.5 mm] inside diameter
- Near-universal device that will work on any type of door that uses butt hinges, continuous hinges or pivots
- Will not function on pivot hinges or center-pivot doors - use "SC" version below

Anixter No.	Vendor No.	Description
450331	EPT	Electrical power transfer

EMB - Exit Bar

SECURITRON MAGNALOCK CORP



FEATURES

- Low-profile design requires only 1/4 in. movement for activation
- Three standard lengths: 36 in., 42 in. and 48 in.
- Can be field-cut to accommodate nonstandard openings up to 48 in.
- Uses same mounting pattern as the TSB-4 and DSB
- Retrofits to most competitors' mounting patterns
- Activates a DPDT 5 amp-rated output when pushed that allows free egress or initiates the delay on an exit-delay timer
- Four individual switches ensure reliable, redundant operation
- All-metal construction
- 16 ft. [4.8m] 22 AWG 6 conductor cable and armored-door cord included

Anixter No.	Vendor No.	Description
450329	EMB	The Electromechanical Exit Bar (EMB) is designed for use on magnetically locked, nonfire-rated doors — or as an initiate device for a delayed-egress timer

PB3 Series Push Button

SECURITRON MAGNALOCK CORP



FEATURES

- Includes switchable green and red lenses
- Red LED on plate where applicable
- 3 amp-rated contacts
- Stainless Steel single-gang plate: 4.5 in. x 2.75 in. [114 mm x 70 mm]
- Stainless Steel narrow-stile plate: 4.5 in. x 1.75 in. [114 mm x 44 mm]
- Surface Mount: 3.875 in. x 2 in. [98mm x 51 mm]
- Field convertible from DPST to DPDT

Anixter No.	Vendor No.	Description
235853	PB3EN	Push button, 1 in. x 3/4 in., "Push to Exit," narrow stile, green and red lenses included
319068	PB3E	1 in. x 3/4 in. rectangle, momentary, DPST
342635	PB3	1 in. x 3/4 in. rectangle, momentary, DPST, illuminated
342636	PB3N	1 in. x 3/4 in. rectangle, momentary, DPST, illuminated, narrow stile
348305	PB3ER	1 in. x 3/4 in. momentary, DPST, surface-mount
450354	PB3A	1 in. x 3/4 in. rectangle, alternate, DPST, illuminated
450356	PB3EA	1 in. x 3/4 in. rectangle, alternate, DPST
450357	PB3EAR	1 in. x 3/4 in. alternate, DPST, surface-mount
450358	PB3AN	1 in. x 3/4 in. rectangle, alternate, DPST, illuminated, narrow stile
450359	PB3EAN	1 in. x 3/4 in. rectangle, alternate, DPST, narrow stile
450360	PB3-LK	Illumination kit for nonilluminated PB3 series push buttons

PB4 Series Push Button

SECURITRON MAGNALOCK CORP



FEATURES

- Illuminated green halo-style button
- Bi-color LED
- 4 amp-rated contacts
- Stainless steel single-gang plate: 4.5 in. x 2.75 in. [114 mm x 70 mm]
- Stainless steel narrow-stile plate: 4.5 in. x 1.75 in. [114 mm x 44 mm]

Anixter No.	Vendor No.	Description
450362	PB4L-2	1 in. stainless momentary, DPDT, single-gang
450364	PB4LA-2	1 in. stainless alternate, DPDT, single-gang
450370	PB4LN-2	1 in. stainless momentary, DPDT, narrow stile
450371	PB4LAN-2	1 in. stainless alternate, DPDT, narrow stile

PB5 Series Push Button

SECURITRON MAGNALOCK CORP



FEATURES

- Includes switchable green, red and blue ADA lenses
- 5 amp-rated contacts
- Stainless steel single-gang plate: 4.5 in. x 2.75 in. [114 mm x 70 mm]
- Field convertible from DPST to DPDT

Anixter No.	Vendor No.	Description
235854	PB5	2 in. round, momentary, DPST, illuminated
450373	PB5E	2 in. round, momentary, DPST
450374	PB2-LK	Illumination kit for PB5E

Door Locking Hardware

Corbin Russwin Inc.

CL31 Series Vandal-resistant Lever Locks

CORBIN RUSSWIN INC.



Corbin Russwin's CL3100 Series lever lock is the ideal solution for the toughest environments within educational facilities. The unique T-Zone construction provides strength and reliability that easily exceeds ANSI/BHMA Grade 1 requirements for torque and cycle testing. The design also simplifies facility maintenance because few components are needed when changing the lock function. Flexible, durable, reliable - this lock can take whatever you give it.

FEATURES

- Simple cylinder removal provides easy change outs
- 10-year limited warranty
- Available in 11 hardware finishes and Microshield antimicrobial coating
- Integrates into most existing facility's key systems, and accepts Schlage LFIC
- Retrofits most standard 161 cylindrical lock door preps and is non handed

Anixter No.	Vendor No.	Description
485120	CL3120 NZD 626	CL3100 Vandal Resistant Lever Lock - Privacy Function - Newport Lever, D Rose
485121	CL3151 NZD626	CL3100 Vandal Resistant Lever Lock - Office Function - Newport Lever, D Rose
485122	C3155 NZD 626	CL3100 Vandal Resistant Lever Lock - Classroom Function - Newport Lever, D Rose
485123	CL3157 NZD 626	CL3100 Vandal Resistant Lever Lock - Storeroom Function - Newport Lever, D Rose
485124	CL3110 NZC 626	CL3100 Vandal Resistant Lever Lock - Passage Function - Newport Lever, C Rose
485125	CL3120 NZC 626	CL3100 Vandal Resistant Lever Lock - Privacy Function - Newport Lever, C Rose
485127	CL3110 NZC 626	CL3100 Vandal Resistant Lever Lock - Office Function - Newport Lever, C Rose
485128	CL3155 NZC 626	CL3100 Vandal Resistant Lever Lock - Classroom Function - Newport Lever, C Rose
485129	CL3157 NZC626	CL3100 Vandal Resistant Lever Lock - Storeroom Function - Newport Lever, C Rose

ML 2000 Series

CORBIN RUSSWIN INC.



The ML2000 series is a Grade 1 mortise lock designed to meet the rigors of high-traffic commercial, institutional, and government applications. A wide variety of trim designs and functions lend to its versatility and reliability.

FEATURES

- Patented Quick Reversible feature enables reversal of hands without disassembling the lock case
- Security trims provide a vandal-resistant barrier
- Can be used with new or existing key systems
- Through-bolted trim designs for proper alignment and increased safety

Anixter No.	Vendor No.	Description
485142	ML 2010 NSA 626	ML 2000 Mortise Lock - Passage Function - Newport Lever
485143	ML 2051 NSA 626	ML 2000 Mortise Lock - Entrance Function - Newport Lever
485144	ML 2052 NSA 626	ML 2000 Mortise Lock - Classroom Intruder Function - Newport Lever
485146	ML 2054 NSA 626	ML 2000 Mortise Lock - Entrance Function - Newport Lever
485147	ML 2055 NSA 626	ML 2000 Mortise Lock - Classroom Function - Newport Lever
485148	ML 2057 NSA 626	ML 2000 Mortise Lock - Storeroom Function - Newport Lever
485149	ML 2060 NSA 626	ML 2000 Mortise Lock - Privacy Function - Newport Lever
485152	ML 2065 NSA 626	ML 2000 Mortise Lock - Entrance Function - Newport Lever
485153	ML 2073 NSA 626	ML 2000 Mortise Lock - Classroom Security Function - Newport Lever
485154	ML20903NSA62612AD	ML 2000 Mortise Lock - Electromechanical Function (Fail-Safe) 12 V - Newport Lever
485155	ML20905NSA62612AD	ML 2000 Mortise Lock - Electromechanical Function (Fail-Secure) 12 V - Newport Lever
485156	ML20903NSA62624AD	ML 2000 Mortise Lock - Electromechanical Function (Fail-Safe) 24 V - Newport Lever
485157	ML20905NSA62624AD	ML 2000 Mortise Lock - Electromechanical Function (Fail-Secure) 24 V - Newport Lever

CL 3300 Series

CORBIN RUSSWIN INC.



The Corbin Russwin CL3300 Series exceeds all Grade 1 lockset standards, providing the safety and security you expect.

FEATURES

- Patented Lever Release (Patent # 4,920,773) for vandal resistance
- Solid cast levers
- Independent return springs to prevent lever sag
- Through-bolted cylindrical chassis prevents rotation and ensures proper alignment

Anixter No.	Vendor No.	Description
485133	CL3310 NZD 626	CL3300 Cylindrical Lock - Passage Function - Newport Lever
485134	CL3320 NZD 626	CL3300 Cylindrical Lock - Privacy Function - Newport Lever
485135	CL3351 NZD 626	CL3300 Cylindrical Lock - Office Function - Newport Lever
485136	CL3355 NZD 626	CL3300 Cylindrical Lock - Classroom Function - Newport Lever
485137	CL3357 NZD 626	CL3300 Cylindrical Lock - Storeroom Function - Newport Lever
485138	CL33903NZD62612AD	CL3300 Cylindrical Lock - Electromechanical Function (Fail-Secure) 12 V - Newport Lever
485139	CL33905NZD62612AD	CL3300 Cylindrical Lock - Electromechanical Function (Fail-Secure) 12 V - Newport Lever
485140	CL33903NZD62624AD	CL3300 Cylindrical Lock - Electromechanical Function (Fail-Safe) 24 V - Newport Lever
485141	CL33905NZD62624AD	CL3300 Cylindrical Lock - Electromechanical Function (Fail-Secure) 24 V - Newport Lever

ED 5000 Series

CORBIN RUSSWIN INC.



Designed to allow safe and easy egress, the ED5000 is ideal for frequent use applications. It offers smooth lines in the device bar and a full range of trim designs with visual diversity.

FEATURES

- Testing procedures go beyond industry standard; 3.25 million cycles
- Deadbolt-style latch design
- Delayed egress
- Heavy-duty, free-wheeling trim
- Five-year warranty

Anixter No.	Vendor No.	Description
485158	ED5200X630XN957X626	ED5200 Exit Device (36 in. door) - Newport Lever Escutcheon - Night Latch
485159	ED5200X630XN950X626	ED5200 Exit Device (36 in. door) - Newport Lever Escutcheon - Dummy Trim
485160	ED5200X630XN955X626	ED5200 Exit Device (36 in. door) - Newport Lever Escutcheon - Classroom Function
485161	ED5200X630XN910X626	ED5200 Exit Device (36 in. door) - Newport Lever Escutcheon - Passage Function
485163	ED5200XW048X630X957X626	ED5200 Exit Device (48 in. door) - Newport Lever Escutcheon - Night Latch
485164	ED5200XW048X630N950X626	ED5200 Exit Device (48 in. door) - Newport Lever Escutcheon - Dummy Trim
485165	ED5200XW048X630X955X626	ED5200 Exit Device (48 in. door) - Newport Lever Escutcheon - Classroom Function
485167	ED5200XW048X630N910X626	ED5200 Exit Device (48 in. door) - Newport Lever Escutcheon - Passage Function

Door Locking Hardware

SARGENT

10 Line

SARGENT



The SARGENT 10 Line cylindrical lock provides impressive strength and durability. With the strength to handle whatever you throw at it, the 10 Line offers the flexibility to accommodate storerooms to classrooms to access control applications. This lock is all things to all doors. Impressive!

FEATURES

- Integrates into most existing facility's key systems
- One-piece cast construction provides strength and durability
- "Freewheeling" trim available with all keying options
- Available with electro-mechanical functions for access control applications
- Seven-year warranty

Anixter No.	Vendor No.	Description
485622	11-10G04 X LL X 26D	10 Line Bored Lock - Storeroom Function, L Lever
485623	11-10G05 X LL X 26D	10 Line Bored Lock - Entrance Function, L Lever
485624	11-10U15 X LL X 26D	10 Line Bored Lock - Passage Function, L Lever
485625	11-10G37 X LL X 26D	10 Line Bored Lock - Classroom Function, L Lever
485626	11-10U65 X LL X 26D	10 Line Bored Lock - Privacy Function, L Lever
485627	11-10G70 12V X LL X 26D	10 Line Bored Lock - Electro-mechanical Function (Fail-Safe) 12 V, L Lever
485628	11-10G70 12V X LL X 26D	10 Line Bored Lock - Electro-mechanical Function (Fail-Secure) 12 V, L Lever
485629	11-10G70 24V X LL X 26D	10 Line Bored Lock - Electro-mechanical Function (Fail-Safe) 24 V, L Lever
485631	11-10G71 24V X LL X 26D	10 Line Bored Lock - Electro-mechanical Function (Fail-Secure) 24 V, L Lever

11 Line

SARGENT



SARGENT's 11 Line is the ideal solution for the toughest environments within healthcare facilities. The unique T-Zone construction provides strength and reliability that easily exceeds ANSI/BHMA Grade 1 requirements for torque and cycle testing. The design also simplifies facility maintenance by utilizing a single lock body for all functions. Flexible, durable, reliable - this lock can take whatever you give it.

FEATURES

- Many functions are field changeable requiring no additional parts
- Simple cylinder removal provides easy change outs
- 10-year limited warranty
- Available in 10 hardware finishes and Microshield antimicrobial coating
- Integrates into most existing facility's key systems - accepts SARGENT key systems including patented Degree and Signature; also accepts Schlage and Medeco LFIC
- Retrofits any standard cylindrical lock door prep and is non handed

Anixter No.	Vendor No.	Description
485498	11-11G04 X LL X 26D	11 Line Bored Lock - Storeroom Function, L Lever
485510	11-11G05 X LL X 26D	11 Line Bored Lock - Entrance Function, L Lever
485513	11-11U15 X LL X 26D	11 Line Bored Lock - Passage Function, L Lever
485516	11-11G37 X LL X 26D	11 Line Bored Lock - Classroom Function, L Lever
485549	11-11U65 X LL X 26D	11 Line Bored Lock - Privacy Function, L Lever
485550	11-11G04 X OL X 26D	11 Line Bored Lock - Entrance Function, O Lever
485552	11-11U15 X OL X 26D	11 Line Bored Lock - Passage Function, O Lever
485553	11-11G37 X OL X 26D	11 Line Bored Lock - Classroom Function, O Lever
485554	11-11U65 X OL X 26D	11 Line Bored Lock - Privacy Function, O Lever

8200 Series

SARGENT



The 8200 Mortise locks are designed and constructed with the highest-quality components to provide maximum security, performance and durability. Considered the industry benchmark for all mortise locks on the market today, the robust lock is an attractive solution with a multitude of lever and escutcheon styles available.

FEATURES

- Only requires a 30 degree lever rotation to retract latchbolt
- Through-bolted lever trim for increased security
- Strengthened cylinder retainer to provide additional resistance against vandalism and unauthorized entry
- Available with electrical functions and monitoring options
- Multiple security options available
- 10-year warranty

Anixter No.	Vendor No.	Description
485500	11-8204XLNLX26D	8888 Exit Device - Rim (33 in.-36 in. Door) - XC Key - Night Latch - L Lever
485503	11-8205XLNLX26D	8200 Mortise Lock - Storeroom Function, L Lever
485504	11-8215XLNLX26D	8200 Mortise Lock - Passage Function, L Lever
485505	11-8255XLNLX26D	8200 Mortise Lock - Office Function, L Lever
485507	11-8237XLNLX26D	8200 Mortise Lock - Classroom Function, L Lever
485508	11-8238XLNLX26D	8200 Mortise Lock - Classroom Security Function, L Lever
485511	11-8245XLNLX26D	8200 Mortise Lock - Exit Function, L Lever
485512	11-8255XLNLX26D	8200 Mortise Lock - Office Function, L Lever
485514	11-8265XLNLX26D	8200 Mortise Lock - Privacy Function, L Lever
485515	11-827012VXLNLX26D	8200 Mortise Lock - Electromechanical Function (Fail-Safe) 12 V, L Lever
485517	11-827112VXLNLX26D	8200 Mortise Lock - Electromechanical Function (Fail-Secure) 12 V, L Lever

Anixter No.	Vendor No.	Description
485520	11-827024VXLNLX26D	8200 Mortise Lock - Electromechanical Function (Fail-Safe) 24 V, L Lever
485522	11-827124VXLNLX26D	8200 Mortise Lock - Electromechanical Function (Fail-Secure) 24 V, L Lever

8888 Series

SARGENT



The 8888 series rim exit device provides the best combination of simplicity, strength, durability aesthetics, and innovation. It's quiet operation and solid security make the device perfect for commercial office buildings, schools and medical facilities.

FEATURES

- Designed for standard-width-stile applications on wood and metal doors
- Single-point rim latching device
- Available as hurricane-resistant applications
- Five-year warranty

Anixter No.	Vendor No.	Description
485523	8888FX32DX11-704XETLX26D	8888 Exit Device - Rim (33 in.-36 in. door) - XC Key - Night Latch - L Lever
485524	8888FX32DX710XETLX26D	8888 Exit Device - Rim (33 in.-36 in. door) - No Outside Operation - L Lever
485525	8888FX32DX11-713-8XETLX26D	8888 Exit Device - Rim (33 in.-36 in. door) - XC Key - Key Outside Locks/Unlocks Trim - L Lever Escutcheon
485526	8888FX32DX11-715-8XETLX26D	8888 Exit Device - Rim (33 in.-36 in. door) - XC Key - Passage - L Lever Escutcheon
485527	8888FX32DX11-88CXLLX26D	8888 Exit Device - Rim (33 in.-36 in. door) - XC Key - Key Outside Locks/Unlocks Trim - L Lever
485528	8888FX32DX88DXLLX26D	8888 Exit Device - Rim (33 in.-36 in. door) - No Outside Operation - L Lever
485530	8888FX32DX11-88KXLLX26D	8888 Exit Device - Rim (33 in.-36 in. door) - XC Key - Key Retracts Latch - L Lever
485532	8888FX32DX88XLLX26D	8888 Exit Device - Rim (33 in.-36 in. door) - L Lever

Door Locking Hardware

SARGENT

(continued)

8888 Series

Anixter No.	Vendor No.	Description
485533	8888GX32DX11-704XETLX26D	8888 Exit Device - Rim (43 in. -48 in. door) - XC Key - Night Latch - L Lever
485535	8888GX32DX710XETLX26D	8888 Exit Device - Rim (43 in. -48 in. door) - No Outside Operation - L Lever
485536	8888GX32DX11-713-8XETLX26D	8888 Exit Device - Rim (43 in. -48 in. door) - XC Key - Key Outside Locks/Unlocks Trim - L Lever Escutcheon
485537	8888GX32DX11-715-8XETLX26D	8888 Exit Device - Rim (43 in. -48 in. door) - XC Key - Passage - L Lever Escutcheon
485538	8888GX32DX11-88CXLLX26D	8888 Exit Device - Rim (43 in. -48 in. door) - XC Key - Key Outside Locks/Unlocks Trim - L Lever
485539	8888GX32DX88DXLLX26D	8888 Exit Device - Rim (43 in. -48 in. door) - No Outside Operation - L Lever
485540	8888GX32DX11-88KXLLX26D	8888 Exit Device - Rim (43 in. -48 in. door) - XC Key - Key Retracts Latch - L Lever
485541	8888GX32DX88XLLX26D	8888 Exit Device - Rim (43 in. -48 in. door) - L Lever