

POWER TRANSMISSION & GAS SPRING ACCESSORIES





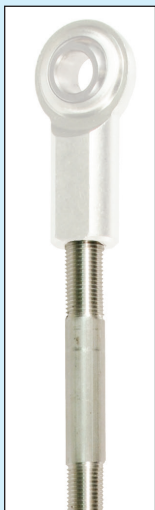
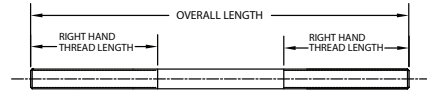
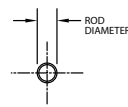
Connecting Rods—External Thread

USA **MADE**

Round—Double End—External Right Hand Threads

Steel and Aluminum—Coarse and Fine Threads

USA **MADE**



Connecting Rods					
Round—Double End—External Right Hand Threads					
Overall Length	Center Rod Diameter *	Threads	Thread Length Each End	Material	Order Number
3"	3/16" or .168"	10-32	1"	Steel Zinc	LINK21803EZ
3	1/4 or 7/32	1/4-28	1	Steel Zinc	LINK25003EZ
3	5/16 or 9/32	5/16-24	1	Steel Zinc	LINK31203EZ
3	3/8 or 11/32	3/8-24	1	Aluminum	LINK37503EA
3	7/16 or .400	7/16-20	1	Aluminum	LINK43703EA
3	1/2 or .462	1/2-20	1	Aluminum	LINK50003EA
6"	3/16" or .168"	10-32	1-3/16"	Steel Zinc	LINK21806EZ
6	1/4 or 7/32	1/4-28	1-1/2	Steel Zinc	LINK25006EZ
6	5/16 or 9/32	5/16-24	1-5/8	Steel Zinc	LINK31206EZ
6	3/8 or 11/32	3/8-24	2	Aluminum	LINK37506EA
6	7/16 or .400	7/16-20	2	Aluminum	LINK43706EA
6	1/2 or 7/16	1/2-13	2	Aluminum	LINK50106EA
6	1/2 or .462	1/2-20	2	Aluminum	LINK50006EA
9"	3/16" or .168"	10-32	1-3/16"	Steel Zinc	LINK21809EZ
9	1/4 or 7/32	1/4-28	1-1/2	Steel Zinc	LINK25009EZ
9	5/16 or 9/32	5/16-24	1-5/8	Steel Zinc	LINK31209EZ
9	3/8 or 11/32	3/8-24	2	Aluminum	LINK37509EA
9	7/16 or .400	7/16-20	2	Aluminum	LINK43709EA
9	1/2 or .462	1/2-20	2	Aluminum	LINK50009EA
12"	3/16" or .168"	10-32	1-3/16"	Steel Zinc	LINK21812EZ
12	1/4 or 7/32	1/4-28	1-1/2	Steel Zinc	LINK25012EZ
12	5/16 or 9/32	5/16-24	1-5/8	Steel Zinc	LINK31212EZ
12	3/8 or 11/32	3/8-24	2	Aluminum	LINK37512EA
12	7/16 or .400	7/16-20	2	Aluminum	LINK43712EA
12	1/2 or 7/16	1/2-13	2	Aluminum	LINK50112EA
12	1/2 or .462	1/2-20	2	Aluminum	LINK50012EA
12	5/8 or 9/16	5/8-11	3-5/8	Aluminum	LINK62612EA
12	5/8 or .585	5/8-18	3-5/8	Aluminum	LINK62512EA
18"	1/4 or 7/32	1/4-28	1-1/2	Steel Zinc	LINK25018EZ
18	5/16 or 9/32	5/16-24	1-5/8	Steel Zinc	LINK31218EZ
18	3/8 or 11/32	3/8-24	2	Aluminum	LINK37518EA
18	7/16 or .400	7/16-20	2	Aluminum	LINK43718EA
18	1/2 or 7/16	1/2-13	2	Aluminum	LINK50118EA
18	1/2 or .462	1/2-20	2	Aluminum	LINK50018EA
18	5/8 or 9/16	5/8-11	3-5/8	Aluminum	LINK62618EA
18	5/8 or .585	5/8-18	3-5/8	Aluminum	LINK62518EA
18	3/4 or .680	3/4-10	3-5/8	Aluminum	LINK75118EA
18	3/4 or .705	3/4-16	3-5/8	Aluminum	LINK75018EA
24"	5/16 or 9/32	5/16-24	1-5/8	Steel Zinc	LINK31224EZ
24	3/8 or 11/32	3/8-24	2	Aluminum	LINK37524EA
24	7/16 or .400	7/16-20	2	Aluminum	LINK43724EA
24	1/2 or 7/16	1/2-13	2	Aluminum	LINK50124EA
24	1/2 or .462	1/2-20	2	Aluminum	LINK50024EA
24	5/8 or 9/16	5/8-11	3-5/8	Aluminum	LINK62624EA
24	5/8 or .585	5/8-18	3-5/8	Aluminum	LINK62524EA
24	3/4 or .680	3/4-10	3-5/8	Aluminum	LINK75124EA
24	3/4 or .705	3/4-16	3-5/8	Aluminum	LINK75024EA
30"	3/8 or 11/32	3/8-24	2	Aluminum	LINK37530EA
30	7/16 or .400	7/16-20	2	Aluminum	LINK43730EA
30	1/2 or .462	1/2-20	2	Aluminum	LINK50030EA
30	5/8 or .585	5/8-18	3-5/8	Aluminum	LINK62530EA
30	3/4 or .705	3/4-16	3-5/8	Aluminum	LINK75030EA
36"	7/16 or .400	7/16-20	2	Aluminum	LINK43736EA
36	1/2 or 7/16	1/2-20	2	Aluminum	LINK50036EA
36	5/8 or .585	5/8-18	3-5/8	Aluminum	LINK62536EA
36	3/4 or .705	3/4-16	3-5/8	Aluminum	LINK75036EA

* Center Rod Diameter varies depending on whether threads were Cut or Rolled on each part

**SPECIAL ORDERS
AVAILABLE—
Small Quantities
to Large Volume**



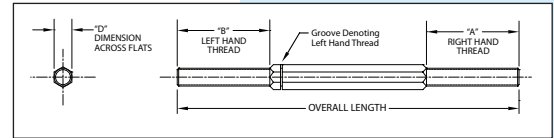


Connecting Rods—External Thread **USA MADE**

HEX—Double End—External Right Hand / Left Hand Threads

Aluminum—Coarse and Fine Threads

Connecting Rods				
HEX—Double End—External Right Hand/Left Hand Threads				
Overall Length	D Hex Diameter Across Flats	A Right Hand Threads	B Left Hand Each End	Order Number
4"	1/4"	10-32 X 1"	10-32 X 1"	LINKH050
4	1/4	1/4-20 x 1	1/4-20 x 1	LINKH052
4	1/4	1/4-28 X 1	1/4-28 X 1	LINKH054
4	5/16	5/16-18 X 1-1/4	5/16-18 X 1-1/4	LINKH056
4	5/16	5/16-24 X 1-1/4	5/16-24 X 1-1/4	LINKH058
4	3/8	3/8-16 X 1-1/4	3/8-16 X 1-1/4	LINKH060
4	3/8	3/8-24 X 1-1/4	3/8-24 X 1-1/4	LINKH062
4	1/2	1/2-13 X 1-1/2	1/2-13 X 1-1/2	LINKH064
4	1/2	1/2-20 X 1-1/2	1/2-20 X 1-1/2	LINKH066
4	3/4	3/4-10 X 1-3/4	3/4-10 X 1-3/4	LINKH068
4	3/4	3/4-16 X 1-3/4	3/4-16 X 1-3/4	LINKH070
6	1/4	10-32 X 1-3/16	10-32 X 1-3/16	LINKH102
6	1/4	1/4-20 X 1-1/2	1/4-20 X 1-1/2	LINKH104
6	1/4	1/4-28 X 1-1/2	1/4-28 X 1-1/2	LINKH106
6	5/16	5/16-18 X 1-5/8	5/16-18 X 1-5/8	LINKH108
6	5/16	5/16-24 X 1-5/8	5/16-24 X 1-5/8	LINKH110
6	3/8	3/8-16 X 2	3/8-16 X 2	LINKH112
6	3/8	3/8-24 X 2	3/8-24 X 2	LINKH114
6	1/2	1/2-13 X 2	1/2-13 X 2	LINKH116
6	1/2	1/2-20 X 2	1/2-20 X 2	LINKH118
6	3/4	3/4-10 X 2	3/4-10 X 2	LINKH120
6	3/4	3/4-16 X 2	3/4-16 X 2	LINKH122
12	1/4	10-32 X 1-3/16	10-32 X 1-3/16	LINKH150
12	1/4	1/4-20 X 1-3/16	1/4-20 X 1-3/16	LINKH152
12	1/4	1/4-28 X 1-3/16	1/4-28 X 1-3/16	LINKH154
12	5/16	5/16-18 X 1-5/8	5/16-18 X 1-5/8	LINKH156
12	5/16	5/16-24 X 1-5/8	5/16-24 X 1-5/8	LINKH158
12	3/8"	3/8-16 X 2	3/8-16 X 2"	LINKH160
12	3/8	3/8-24 X 2	3/8-24 X 2	LINKH162
12	1/2	1/2-13 X 2	1/2-13 X 2	LINKH164
12	1/2	1/2-20 X 2	1/2-20 X 2	LINKH166
12	3/4	3/4-10 X 2	3/4-10 X 2	LINKH168
12	3/4	3/4-16 X 2	3/4-16 X 2	LINKH170
18	1/4	10-32 X 1-3/16	10-32 X 1-3/16	LINKH200
18	1/4	1/4-20 X 1-1/2	1/4-20 X 1-1/2	LINKH202
18	1/4	1/4-28 X 1-1/2	1/4-28 X 1-1/2	LINKH204
18	5/16	5/16-18 X 1-5/8	5/16-18 X 1-5/8	LINKH206
18	5/16	5/16-24 X 1-5/8	5/16-24 X 1-5/8	LINKH208
18	3/8	3/8-16 X 2	3/8-16 X 2	LINKH210
18	3/8	3/8-24 X 2	3/8-24 X 2	LINKH212
18	1/2	1/2-13 X 2	1/2-13 X 2	LINKH214
18	1/2	1/2-20 X 2	1/2-20 X 2	LINKH216
18	3/4	3/4-10 X 2	3/4-10 X 2	LINKH218
18	3/4	3/4-16 X 2	3/4-16 X 2	LINKH220
24	1/4	10-32 X 1-3/16	10-32 X 1-3/16	LINKH250
24	1/4	1/4-20 X 1-1/2	1/4-20 X 1-1/2	LINKH252
24	1/4	1/4-28 X 1-1/2	1/4-28 X 1-1/2	LINKH254
24	5/16	5/16-18 X 1-5/8	5/16-18 X 1-5/8	LINKH256
24	5/16	5/16-24 X 1-5/8	5/16-24 X 1-5/8	LINKH258
24	3/8	3/8-16 X 2	3/8-16 X 2	LINKH260
24	3/8	3/8-24 X 2	3/8-24 X 2	LINKH262
24	1/2	1/2-13 X 2	1/2-13 X 2	LINKH264
24	1/2	1/2-20 X 2	1/2-20 X 2	LINKH266
24	3/4	3/4-10 X 2	3/4-10 X 2	LINKH268
24	3/4	3/4-16 X 2	3/4-16 X 2	LINKH270



USA MADE





Connecting Rods—Internal Thread

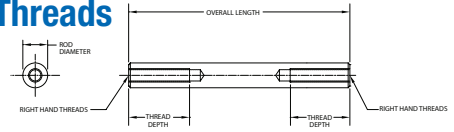
USA **MADE**

Round—Double End—Internal Right Hand Threads

Steel and Aluminum—Fine Threads

Lengths from 3" to 36"

USA **MADE**



Internal Thread Connecting Rods					
Round—Double End—Internal Right Hand Threads					
Overall Length	Rod Diameter	Threads Each End	Thread Depth Each End	Material	Order Number
3"	1/4"	10-32	3/4"	Steel Zinc	LINK21803IZ
3	3/8	1/4-28	1	Steel Zinc	LINK25003IZ
3	7/16	5/16-24	1-1/4	Steel Zinc	LINK31203IZ
3	7/16	3/8-24	1-1/4	Aluminum	LINK37503IA
3"	5/8	1/2-20	1-1/4	Aluminum	LINK50003IA
<hr/>					
6"	1/4"	10-32	3/4"	Steel Zinc	LINK21806IZ
6	3/8	1/4-28	1	Steel Zinc	LINK25006IZ
6	7/16	5/16-24	1-1/4	Steel Zinc	LINK31206IZ
6	7/16	3/8-24	1-1/4	Aluminum	LINK37506IA
6	9/16	7/16-20	1-3/8	Aluminum	LINK43706IA
6	5/8	1/2-20	1-1/2	Aluminum	LINK50006IA
<hr/>					
9"	1/4"	10-32	3/4"	Steel Zinc	LINK21809IZ
9	3/8	1/4-28	1	Steel Zinc	LINK25009IZ
9	7/16	5/16-24	1-1/4	Steel Zinc	LINK31209IZ
9	7/16	3/8-24	1-1/4	Aluminum	LINK37509IA
9	5/8	1/2-20	1-1/4	Aluminum	LINK50009IA
<hr/>					
12	1/4"	10-32	3/4"	Steel Zinc	LINK21812IZ
12	3/8	1/4-28	1	Steel Zinc	LINK25012IZ
12	7/16	5/16-24	1-1/4	Steel Zinc	LINK31212IZ
12	7/16	3/8-24	1-1/4	Aluminum	LINK37512IA
12	9/16	7/16-20	1-3/8	Aluminum	LINK43712IA
12	5/8	1/2-20	1-1/2	Aluminum	LINK50012IA
12	3/4	5/8-18	1-5/8	Aluminum	LINK62512IA
<hr/>					
18	3/8	1/4-28	1	Steel Zinc	LINK25018IZ
18	7/16	5/16-24	1-1/4	Steel Zinc	LINK31218IZ
18	7/16	3/8-24	1-1/4	Aluminum	LINK37518IA
18	9/16	7/16-20	1-3/8	Aluminum	LINK43718IA
18	5/8	1/2-20	1-1/2	Aluminum	LINK50018IA
18	3/4	5/8-18	1-5/8	Aluminum	LINK62518IA
18	7/8	3/4-16	1-3/4	Aluminum	LINK75018IA
<hr/>					
24"	7/16"	5/16-24	1-1/4"	Steel Zinc	LINK31224IZ
24	7/16	3/8-24	1-1/4	Aluminum	LINK37524IA
24	9/16	7/16-20	1-3/8	Aluminum	LINK43724IA
24	5/8	1/2-20	1-1/2	Aluminum	LINK50024IA
24	3/4	5/8-18	1-5/8	Aluminum	LINK62524IA
24	7/8	3/4-16	1-3/4	Aluminum	LINK75024IA
<hr/>					
30	7/16	3/8-24	1-1/4	Aluminum	LINK37530IA
30	9/16	7/16-20	1-3/8	Aluminum	LINK43730IA
30	5/8	1/2-20	1-1/2	Aluminum	LINK50030IA
30	3/4	5/8-18	1-5/8	Aluminum	LINK62530IA
30	7/8	3/4-16	1-3/4	Aluminum	LINK75030IA
<hr/>					
36	9/16	7/16-20	1-3/8	Aluminum	LINK43736IA
36	5/8	1/2-20	1-1/2	Aluminum	LINK50036IA
36	3/4	5/8-18	1-5/8	Aluminum	LINK62536IA
36	7/8	3/4-16	1-3/4	Aluminum	LINK75036IA

**SPECIAL ORDERS
AVAILABLE—**
*Small Quantities
to Large Volume*





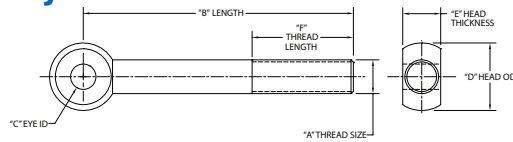
Eye Bolts

USA MADE

Eye Bolts—Solid Rod Ends—Externally Threaded

Aluminum Eyebolts manufactured from 6061 T6 Aluminum, with protective Red Anodized Finish.

USA MADE



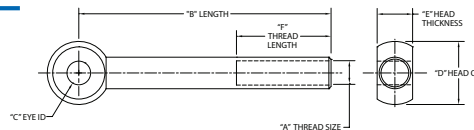
Eye Bolts—Externally Threaded							
A	B	C	D	E	F	Material	Order Number
Thread	Length	Eye ID	Head OD	Head Thickness	Thread Length		
10-32	1-1/2"	3/16"	1/2"	5/16"	1"	12L14 Steel/Black Ox	Z0008-12L
10-32	1-1/2"	3/16	1/2	5/16	1	4140 Steel/Black Ox	Z0008-414
10-32	1-1/2"	3/16	1/2	5/16	1	18-8 Stainless Steel	Z0008-188
10-32	2	3/16	1/2	3/16	3/4	4140 Steel	Z0033-414
10-32	2	3/16	1/2	3/16	3/4	18-8 Stainless Steel	Z0033-188
10-32	2	3/16	1/2	3/16	3/4	Type 316 Stainless Steel	Z0033-316
10-32	3	3/16	1/2	3/16	3/4	4140 Steel	Z0034-414
10-32	3	3/16	1/2	3/16	3/4	18-8 Stainless Steel	Z0034-188
10-32	3	3/16	1/2	3/16	3/4	Type 316 Stainless Steel	Z0034-316
1/4-20	2"	3/16"	1/2"	9/32"	3/4"	Aluminum (Red Anodized)	Z0010
1/4-20	4"	3/16	1/2	9/32	3/4	Aluminum (Red Anodized)	Z0011
5/16-18	3"	1/4	5/8	11/32	1-1/2	Aluminum (Red Anodized)	Z0013
5/16-18	4"	1/4	5/8	11/32	1-1/2	Aluminum (Red Anodized)	Z0014
3/8-16	3"	3/8	3/4	7/16	1-1/2	Aluminum (Red Anodized)	Z0016
3/8-16	4"	3/8	3/4	7/16	1-1/2	Aluminum (Red Anodized)	Z0017
3/8-16	5"	3/8	3/4	7/16	1-1/2	Aluminum (Red Anodized)	Z0018
1/2-13	3-3/4"	3/8	1	9/16	1-1/2	Aluminum (Red Anodized)	Z0020
1/2-13	4"	3/8	1	9/16	1-1/2	Aluminum (Red Anodized)	Z0021
1/2-13	5"	3/8	1	9/16	1-1/2	Aluminum (Red Anodized)	Z0022
5/8-11	4-1/2	5/8	1-1/4	11/16	2	Aluminum (Red Anodized)	Z0025
5/8-11	5	5/8	1-1/4	11/16	2	Aluminum (Red Anodized)	Z0026
5/8-11	6	5/8	1-1/4	11/16	2	Aluminum (Red Anodized)	Z0027
3/4-10	4-1/2	3/4	1-1/2	13/16	2	Aluminum (Red Anodized)	Z0030
3/4-10	5	5/8	1-1/2	13/16	1-3/4	Aluminum (Red Anodized)	Z0031
3/4-10	6	3/4	1-1/2	13/16	2-1/2	Aluminum (Red Anodized)	Z0032

New items available in Steel and Stainless

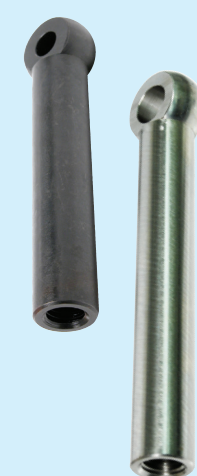


Internally Threaded Solid Rod Ends— In Steel and 18-8 St/St

Available in 12L14 Steel Case Hardened, with protective Black Oxide Finish, or 18-8 St/St.



Eye Bolts—Steel & Stainless Steel									
Internally Threaded—Solid Rod Ends									
"A" Thread	Shaft		"C" Eye ID (Steel)	"C" Eye ID (Stainless)	"D" Head OD	"E" Head Thickness	"F" Thread Length	Order Number	
	Outside Diameter	"B" Length						Steel Black Ox	Stainless Steel
1/4-20	3/8"	2"	.188-.190"	.188-.193"	1/2"	9/32"	3/4"	Z0040	Z0040SS
1/4-20	3/8"	2"	.250	—	1/2"	9/32"	3/4"	Z0038	—
3/8-16	5/8	3	.380-.385	.375-.380	3/4	7/16	1	Z0041	Z0041SS
1/2-13	3/4	3-3/4	.380-.385	.375-.380	1	9/16	1	Z0042	Z0042SS
1/2-13	3/4	3-3/4	.500	—	1	9/16	1	Z0039	—
1/2-13	3/4	4"	.380-.385	.375-.380	1	9/16	1	Z0043	Z0043SS
5/8-11	7/8	4-1/2	.630-.635	.625-.630	1-1/4	11/16	1	Z0044	Z0044SS
5/8-11	7/8	5	.630-.635	.625-.630	1-1/4	11/16	1	Z0045	Z0045SS
5/8-11	7/8	6	.630-.635	.625-.630	1-1/4	11/16	1-1/2	Z0046	Z0046SS
3/4-10	1"	4-1/2	.755-.760	.750-.755	1-1/2	13/16	1"	Z0047	Z0047SS



USA MADE





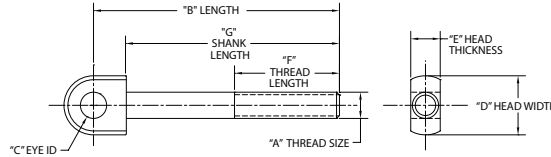
Latch Bolts & Pull Dowels

USA **MADE**

Externally Threaded Latch Bolts—Metric

USA manufactured from 12L14 Steel

Case Hardened, with protective Black Oxide Finish



Latch Bolts—Steel—Metric							
A	B	C	D	E	F	G	Order Number
Thread	Length	Eye ID	Head Width	Head Thickness	Thread Length	Shank Length	
M8	75MM	8MM	18MM	9MM	32MM	65MM	Z0050
M8	100	8	18	9	32	90	Z0051
M10	75	10	20	12	40	64	Z0053
M10	100	10	20	12	40	89	Z0054
M16	75	16	32	17	40	57	Z0056
M16	100	16	32	17	40	83	Z0057

USA **MADE**

Pull Dowels

Designed with a flat on the side to release trapped air in blind holes.

Material: Low Carbon Steel, Case Haredened to .005-.010 Depth. O.D. Tolerance: +.0001"—+.0003"



Pull Dowels									
"A" Diameter	"L" Length	"D" Thread Size	Thread Depth	Order Number	"A" Diameter	"L" Length	"D" Thread Size	Thread Depth	Order Number
1/4"	3/4"	8-32	3/8"	Z1258	7/16	2	1/4-20	3/8	Z1218
1/4	1	8-32	3/8	Z1260	1/2	1	1/4-20	1/2	Z1220
1/4	1-1/4	8-32	3/8	Z1262	1/2	1-1/4	1/4-20	1/2	Z1222
1/4	1-1/2	8-32	3/8	Z1264	1/2	1-1/2	1/4-20	1/2	Z1224
1/4	2	8-32	3/8	Z1266	1/2	1-3/4	1/4-20	1/2	Z1256
5/16	3/4	10-32	1/4	Z1250	1/2	2	1/4-20	1/2	Z1226
5/16	1	10-32	1/4	Z1200	1/2	2-1/2	1/4-20	1/2	Z1228
5/16	1-1/4	10-32	1/4	Z1202	1/2	3	1/4-20	1/2	Z1230
5/16	1-1/2	10-32	1/4	Z1204	5/8	1-1/2	5/16-18	1/2	Z1232
5/16	2	10-32	1/4	Z1252	5/8	2	5/16-18	1/2	Z1234
3/8	1	10-32	3/8	Z1206	5/8	2-1/2	5/16-18	1/2	Z1236
3/8	1-1/4	10-32	3/8	Z1208	5/8	3	5/16-18	1/2	Z1238
3/8	1-1/2	10-32	3/8	Z1210	3/4	2	3/8-16	1/2	Z1240
3/8	2	10-32	3/8	Z1212	3/4	2-1/2	3/8-16	1/2	Z1242
3/8	2-1/2	10-32	3/8	Z1254	3/4	3	3/8-16	1/2	Z1244
3/8	3	10-32	3/8	Z1214	1	2-1/2	3/8-16	1/2	Z1246
7/16	1-1/2	1/4-20	3/8	Z1216	1	3	3/8-16	1/2	Z1248

USA **MADE**

**SPECIAL ORDERS
AVAILABLE—
Small Quantities
to Large Volume**





Turnbuckles—Internal Thread Aluminum

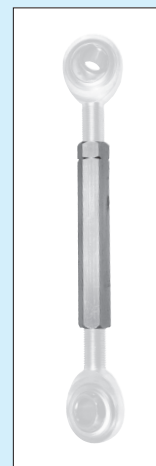
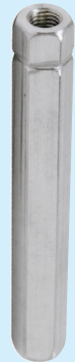
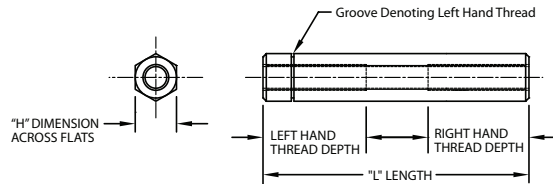
USA **MADE**

Aluminum Internal Thread Turnbuckles—

Right Hand/Left Hand Threads

Used to connect Linkages, studs, or control arms together.

- Combination of right and left hand threads helps control the loosening of the joined parts.
- Fine thread pitches allow fine adjustment without disassembling the linkage.
- Hex stock provides wrenching flats for quick and convenient adjustments.
- Left Hand threaded side is marked for ease of assembly.
- Manufactured from Aluminum bar stock.
- Use with our Right and Left Hand Connecting Rods to build linkage assemblies.



Internal Thread Turnbuckles						
"H" Diameter Across Flats	"L" Length	Right Hand Threads	"T" Right Thread Depth	Left Hand Threads	"T" Left Thread Depth	Order Number
3/8"	2"	1/4-28	3/4"	1/4-28	3/4"	LINKT050
3/8	3	1/4-28	3/4	1/4-28	3/4	LINKT054
3/8	4	1/4-28	3/4	1/4-28	3/4	LINKT058
3/8	6	1/4-28	3/4	1/4-28	3/4	LINKT064
3/8	12	1/4-28	3/4	1/4-28	3/4	LINKT070
1/2	2	5/16-24	3/4	5/16-24	3/4	LINKT100
1/2	3	5/16-24	3/4	5/16-24	3/4	LINKT104
1/2	4	5/16-24	3/4	5/16-24	3/4	LINKT108
1/2	6	5/16-24	3/4	5/16-24	3/4	LINKT114
1/2	12	5/16-24	3/4	5/16-24	3/4	LINKT116
1/2	2	3/8-24	3/4	3/8-24	3/4	LINKT120
1/2	3	3/8-24	1	3/8-24	1	LINKT124
1/2	4	3/8-24	1	3/8-24	1	LINKT128
1/2	6	3/8-24	1	3/8-24	1	LINKT134
1/2	12	3/8-24	1	3/8-24	1	LINKT136
5/8	2	1/2-20	3/4	1/2-20	3/4	LINKT150
5/8	3	1/2-20	1	1/2-20	1	LINKT154
5/8	4	1/2-20	1	1/2-20	1	LINKT158
5/8	6	1/2-20	1	1/2-20	1	LINKT164
5/8	12	1/2-20	1	1/2-20	1	LINKT166
1"	2	3/4-16	3/4	3/4-16	3/4	LINKT200
1"	3	3/4-16	1	3/4-16	1	LINKT204
1"	4	3/4-16	1	3/4-16	1	LINKT208
1"	6	3/4-16	1	3/4-16	1	LINKT214



USA **MADE**





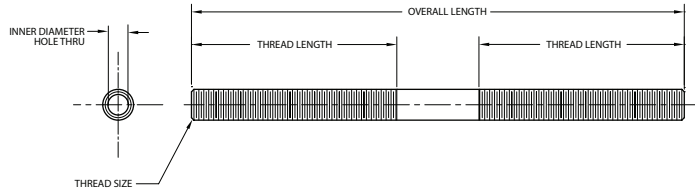
Threaded Studs & Knurled Round Nuts

USA **MADE**

Hollow-Centered Threaded Studs—External RH Threads

4130 Alloy—Black Oxide Finish, Soft.

- Used for Coolant and Air Routing



Hollow-Centered Threaded Studs				
Double Ends—Right Hand Threads				
Thread Size Each End	Overall Length	Thread Length Each End	Inner Diameter	Order Number
1/4-20	4"	1-1/2"	1/8"	Z0975
1/4-20	5	2	1/8	Z0976
1/4-20	6	2-1/2	1/8	Z0977
1/4-20	7	2-3/4	1/8	Z0978
1/4-20	8	2-3/4	1/8	Z0979
5/16-18	4"	1-1/2"	3/16"	Z0980
5/16-18	5	2	3/16	Z0981
5/16-18	6	2-1/2	3/16	Z0982
5/16-18	7	2-3/4	3/16	Z0983
5/16-18	8	2-3/4	3/16	Z0984
3/8-16	4"	1-1/2"	7/32"	Z0985
3/8-16	5	2	7/32	Z0986
3/8-16	6	2-1/2	7/32	Z0987
3/8-16	7	2-3/4	7/32	Z0988
3/8-16	8	2-3/4	7/32	Z0989
1/2-13	4"	1-1/2"	11/32"	Z0994
1/2-13	5	2	11/32	Z0995
1/2-13	6	2-1/2	11/32	Z0996
1/2-13	7	2-3/4	11/32	Z0997
1/2-13	8	2-3/4	11/32	Z0998

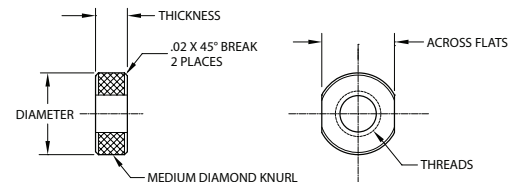
USA **MADE**



Knurled Round Nuts with Wrench Flats

4140 Steel Thru Hard, Black Oxide Finish

USA **MADE**



Knurled Round Nuts w/Wrench Flats				
Threads	Diameter	Across Flats	Thickness	Order Number
2-56	1/4"	3/16"	1/16"	Z0640
4-40	1/4	3/16	3/32	Z0641
5-40	5/16	1/4	7/64	Z0642
6-32	5/16	1/4	7/64	Z0643
8-32	11/32	5/16	1/8	Z0644
10-32	3/8	5/16	1/8	Z0645
1/4-20	7/16	3/8	3/16	Z0646
5/16-18	9/16	1/2	7/32	Z0647

**SPECIAL ORDERS
AVAILABLE—
Small Quantities
to Large Volume**





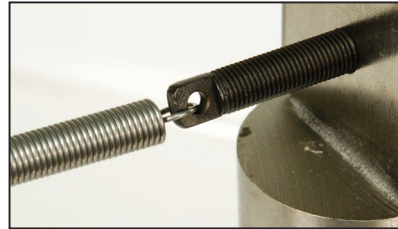
Spring Anchors

USA MADE

Spring Anchors

For Extension Springs

Available in Steel with Black Oxide Finish or 18-8 Stainless Steel



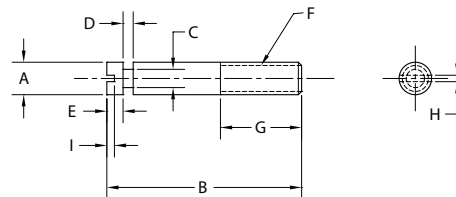
USA MADE

Spring Anchors—Steel & Stainless Steel							
Thread	Overall Length	Threaded Shank Length	Head Height	Hole Diameter	Centerline of Hole to Top of Head	Order Number	
						Steel Black Oxide	18-8 Stainless Steel
6-32	5/8	.400	.150	.080	.070	Z20001	Z20001SS
6-48	5/8	.400	.150	.080	.070	Z20002	Z20002SS
8-32	7/8	.625	.160	.100	.085	Z20004	Z20004SS
8-40	7/8	.625	.160	.100	.085	Z20005	Z20005SS
1/4-20	1-1/4	.875	.250	.150	.130	Z20010	Z20010SS
1/4-28	1-1/4	.875	.250	.150	.130	Z20011	Z20011SS
3/8-16	1-5/8	1.125	.360	.220	.180	Z20014	Z20014SS
3/8-24	1-5/8	1.125	.360	.220	.180	Z20015	Z20015SS



Headless Groove-Type Spring Anchors

- Made in the USA
- 18-8 Stainless Steel available from stock
- Headless Anchors come with a St/St Jam Nut ready for installation
- Standard and Custom lengths available



Headless Groove-Type Spring Anchors												
"A" Major Dia.	"B" Overall Length	"C" Groove Dia.	"D" Groove Height	"A" Head Dia.	"E" Head Height	"F" Threads	"G" Thread Length	"H" Slot Width	"I" Slot Depth	Material	18-8 St/St Hex Jam Nut (Included With Anchor)	Order Number
1/8	5/8	.078	.047	1/8	1/8	5-40	3/8	.039	.040	18-8 St/St	5/16 A/F x 7/64 thk	Z20075SS
1/8	3/4	.078	.047	1/8	1/8	5-40	3/8	.039	.040	18-8 St/St	5/16 A/F X 7/64 thk	Z20076SS
1/8	1	.078	.047	1/8	1/8	5-40	3/8	.039	.040	18-8 St/St	5/16 A/F X 7/64 thk	Z20077SS
3/16	3/4	.125	.094	3/16	5/32	10-32	3/8	.055	.040	18-8 St/St	3/8 A/F X 1/8 thk	Z20100SS
3/16	1	.125	.094	3/16	5/32	10-32	3/8	.055	.040	18-8 St/St	3/8 A/F X 1/8 thk	Z20101SS
3/16	1-1/4	.125	.094	3/16	5/32	10-32	3/8	.055	.040	18-8 St/St	3/8 A/F X 1/8 thk	Z20102SS
1/4	1	.156	.125	1/4	5/32	1/4-20	5/8	.070	.069	18-8 St/St	7/16 A/F X 5/32 thk	Z20105SS
1/4	1-1/4	.156	.125	1/4	5/32	1/4-20	5/8	.070	.069	18-8 St/St	7/16 A/F X 5/32 thk	Z20106SS
1/4	1-1/2	.156	.125	1/4	5/32	1/4-20	5/8	.070	.069	18-8 St/St	7/16 A/F X 5/32 thk	Z20107SS
5/16	1	.188	.125	5/16	5/32	5/16-18	3/4	.078	.069	18-8 St/St	1/2 A/F X 3/16 thk	Z20110SS
5/16	1-1/4	.188	.125	5/16	5/32	5/16-18	3/4	.078	.069	18-8 St/St	1/2 A/F X 3/16 thk	Z20111SS
5/16	1-1/2	.188	.125	5/16	5/32	5/16-18	3/4	.078	.069	18-8 St/St	1/2 A/F X 3/16 thk	Z20112SS
5/16	2	.188	.125	5/16	5/32	5/16-18	3/4	.078	.069	18-8 St/St	1/2 A/F X 3/16 thk	Z20113SS
3/8	1-1/2	.250	.125	3/8	3/16	3/8-16	1	.088	.094	18-8 St/St	9/16 A/F X 7/32 thk	Z20117SS
3/8	2	.250	.125	3/8	3/16	3/8-16	1	.088	.094	18-8 St/St	9/16 A/F X 7/32 thk	Z20118SS
3/8	2-1/2	.250	.125	3/8	3/16	3/8-16	1	.088	.094	18-8 St/St	9/16 A/F X 7/32 thk	Z20119SS
1/2	2	.281	.156	1/2	1/4	1/2-13	1-1/4	.099	.117	18-8 St/St	3/4 A/F X 5/16 thk	Z20125SS
1/2	2-1/2	.281	.156	1/2	1/4	1/2-13	1-1/4	.099	.117	18-8 St/St	3/4 A/F X 5/16 thk	Z20126SS
1/2	3	.281	.156	1/2	1/4	1/2-13	1-1/4	.099	.117	18-8 St/St	3/4 A/F X 5/16 thk	Z20127SS

USA MADE



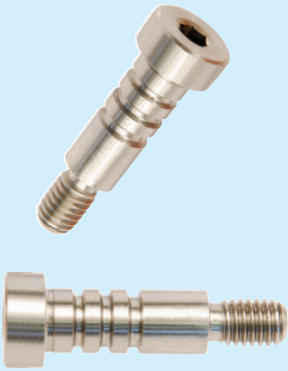
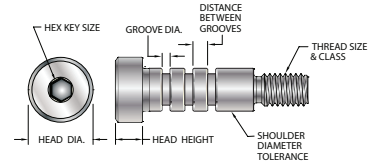


Spring Anchors

USA **MADE**

Headed Spring Anchors

- Made in the USA
- 18-8 Stainless Steel available from stock
- Easy to install
- Multiple grooves allow height adjustment after installation
- Multiple grooves accommodate two springs on a single anchor
- Grooves are approx. .005" deeper than wire diameter for positive locking
- Separation between each groove of approx. 3 times the wire diameter
- Finished appearance of the Anchor enhances product design
- Large variety of diameters and heights make this a versatile anchor for both prototype and production methods



SHAFT SPRING ANCHOR WITH HEAD														
Designed for End Inner Diameter of	Groove Dia	Groove Height	Distance between Grooves	Number of Grooves	Shaft Diameter	Shaft Length	Head Height	Head Outer Diameter	Type of Drive	Hex Size	Thread Size	Thread Lth	Thread Class	Order Number
.070"	.017	.024	.036	3	.078	3/8"	3/32	5/32	Slot	n/a	1-72	1/8	3A	Z202005SS
.070"	.017	.024	.036	3	.078	1/2"	3/32	5/32	Slot	n/a	1-72	1/8	3A	Z202010SS
.070"	.017	.024	.036	3	.078	3/4"	3/32	5/32	Slot	n/a	1-72	1/8	3A	Z202015SS
1/8"	.063	.052	.078	3	.125	3/4	1/8	1/4	Hex	5/64	4-40	5/32	3A	Z202020SS
1/8"	.063	.052	.078	3	.125	1	1/8	1/4	Hex	5/64	4-40	5/32	3A	Z202025SS
1/8"	.063	.052	.078	3	.125	1-1/4	1/8	1/4	Hex	5/64	4-40	5/32	3A	Z202030SS
11/64"	.094	.068	.102	3	.172	3/4	5/32	5/16	Hex	3/32	8-32	3/16	3A	Z202035SS
11/64"	.094	.068	.102	3	.172	1	5/32	5/16	Hex	3/32	8-32	3/16	3A	Z202040SS
11/64"	.094	.068	.102	3	.172	1-1/4	5/32	5/16	Hex	3/32	8-32	3/16	3A	Z202045SS
11/64"	.094	.068	.102	3	.172	1-1/2	5/32	5/16	Hex	3/32	8-32	3/16	3A	Z202050SS
3/16"	.126	.052	.078	3	.187	3/4	5/32	5/16	Hex	3/32	8-32	3/16	3A	Z202055SS
3/16"	.126	.052	.078	3	.187	1	5/32	5/16	Hex	3/32	8-32	3/16	3A	Z202060SS
3/16"	.126	.052	.078	3	.187	1-1/4	5/32	5/16	Hex	3/32	8-32	3/16	3A	Z202065SS
3/16"	.126	.052	.078	3	.187	1-1/2	5/32	5/16	Hex	3/32	8-32	3/16	3A	Z202070SS
13/64"	.094	.098	0.147	3	.203	1	5/32	5/16	Hex	3/32	8-32	3/16	3A	Z202075SS
13/64"	.094	.098	0.147	3	.203	1-1/4	5/32	5/16	Hex	3/32	8-32	3/16	3A	Z202080SS
13/64"	.094	.098	0.147	3	.203	1-1/2	5/32	5/16	Hex	3/32	8-32	3/16	3A	Z202085SS
13/64"	.094	.098	0.147	3	.203	2	5/32	5/16	Hex	3/32	8-32	3/16	3A	Z202090SS
17/64	.170	.090	.135	3	.270	1	7/32	3/8	Hex	1/8	10-24	3/8	3A	Z202095SS
17/64	.170	.090	.135	3	.270	1-1/4	7/32	3/8	Hex	1/8	10-24	3/8	3A	Z202100SS
17/64	.170	.090	.135	3	.270	1-1/2	7/32	3/8	Hex	1/8	10-24	3/8	3A	Z202105SS
17/64	.170	.090	.135	3	.270	2	7/32	3/8	Hex	1/8	10-24	3/8	3A	Z202110SS
19/64	.214	.068	.102	3	.292	1	7/32	7/16	Hex	1/8	1/4-20	7/16	3A	Z202115SS
19/64	.214	.068	.102	3	.292	1-1/4	7/32	7/16	Hex	1/8	1/4-20	7/16	3A	Z202120SS
19/64	.214	.068	.102	3	.292	1-1/2	7/32	7/16	Hex	1/8	1/4-20	7/16	3A	Z202125SS
19/64	.214	.068	.102	3	.292	2	7/32	7/16	Hex	1/8	1/4-20	7/16	3A	Z202130SS
3/8	.238	.126	.189	3	.374	1-1/2	1/4	9/16	Hex	3/16	5/16-18	1/2	3A	Z202135SS
3/8	.238	.126	.189	3	.374	1-3/4	1/4	9/16	Hex	3/16	5/16-18	1/2	3A	Z202140SS
3/8	.238	.126	.189	3	.374	2	1/4	9/16	Hex	3/16	5/16-18	1/2	3A	Z202145SS
3/8	.238	.126	.189	3	.374	2-1/2	1/4	9/16	Hex	3/16	5/16-18	1/2	3A	Z202150SS
27/64	.326	.082	.123	3	.418	1	1/4	9/16	Hex	3/16	5/16-18	1/2	3A	Z202155SS
27/64	.326	.082	.123	3	.418	1-1/4	1/4	9/16	Hex	3/16	5/16-18	1/2	3A	Z202160SS
27/64	.326	.082	.123	3	.418	1-1/2	1/4	9/16	Hex	3/16	5/16-18	1/2	3A	Z202165SS
27/64	.326	.082	.123	3	.418	2	1/4	9/16	Hex	3/16	5/16-18	1/2	3A	Z202170SS
9/16	.360	.190	.285	3	.560	1-3/4	3/8	7/8	Hex	5/16	1/2-13	3/4	3A	Z202175SS
9/16	.360	.190	.285	3	.560	2	3/8	7/8	Hex	5/16	1/2-13	3/4	3A	Z202180SS
9/16	.360	.190	.285	3	.560	2-1/4	3/8	7/8	Hex	5/16	1/2-13	3/4	3A	Z202185SS
9/16	.360	.190	.285	3	.560	2-1/2	3/8	7/8	Hex	5/16	1/2-13	3/4	3A	Z202190SS
5/8	.488	.126	.189	3	.624	1-1/2	3/8	7/8	Hex	5/16	1/2-13	3/4	3A	Z202195SS
5/8	.488	.126	.189	3	.624	1-3/4	3/8	7/8	Hex	5/16	1/2-13	3/4	3A	Z202200SS
5/8	.488	.126	.189	3	.624	2	3/8	7/8	Hex	5/16	1/2-13	3/4	3A	Z202205SS
5/8	.488	.126	.189	3	.624	2-1/2	3/8	7/8	Hex	5/16	1/2-13	3/4	3A	Z202210SS
13/16	.610	.190	.285	3	.810	1-3/4	1/2	1	Hex	3/8	5/8-11	7/8	3A	Z202215SS
13/16	.610	.190	.285	3	.810	2	1/2	1	Hex	3/8	5/8-11	7/8	3A	Z202220SS
13/16	.610	.190	.285	3	.810	2-1/4	1/2	1	Hex	3/8	5/8-11	7/8	3A	Z202225SS
13/16	.610	.190	.285	3	.810	2-1/2	1/2	1	Hex	3/8	5/8-11	7/8	3A	Z202230SS
1	.700	.270	.405	3	.980	2-1/4	5/8	1-1/4	Hex	1/2	3/4-10	7/8	3A	Z202235SS
1	.700	.270	.405	3	.980	2-1/2	5/8	1-1/4	Hex	1/2	3/4-10	1	3A	Z202240SS
1	.700	.270	.405	3	.980	2-3/4	5/8	1-1/4	Hex	1/2	3/4-10	1	3A	Z202245SS
1	.700	.270	.405	3	.980	3	5/8	1-1/4	Hex	1/2	3/4-10	1	3A	Z202250SS

**SPECIAL ORDERS
AVAILABLE—
Small Quantities
to Large Volume**



USA **MADE**



Swivel Spring Anchors

USA MADE

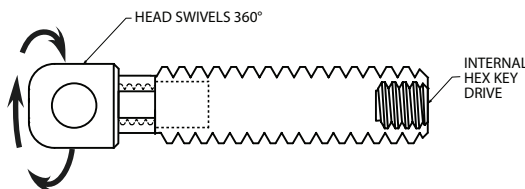
Z-Swivel Spring Anchors

For Extension Springs—Available in Steel with Black Oxide Finish or 18-8 Stainless Steel
PATENTED • Made in USA

Engineering problem: When adjusting the tension on extension springs, the spring twists as the Spring Anchor is tightened down.

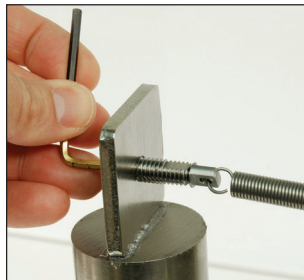
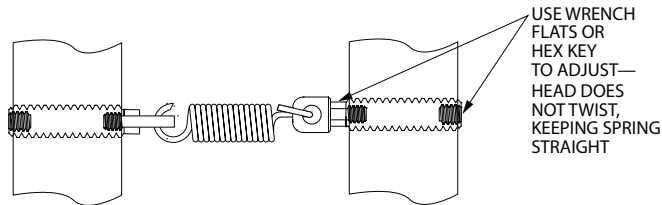
Solution: Our NEW Patent-pending Z Swivel Spring Anchors allow for the adjustment of tension on the spring, without twisting it. The attachment point to the spring is on a swivel, allowing the spring to be drawn tighter, without changing or twisting the spring position.

There are 2 ways to adjust the anchor—
with a hex Key from the bottom of the Anchor, or by using the wrench flats on the top of the Anchor.



U.S. Patent # 8,136,801

USA MADE



Z-Swivel Spring Anchor							
Thread	Overall Length	Threaded Shank Length*	Head Height	Hole Diameter	Centerline of Hole to Top of Head	Steel, Soft, Black Oxide Order Number	18-8 Stainless Steel Order Number
6-32	.580"	.400"	.150"	.080"	.070"	Z20050	Z20050SS
8-32	.820	.625	.160	.100	.085	Z20054	Z20054SS
1/4-20	1.16	.875	.250	.150	.130	Z20058	Z20058SS
3/8-16	1.52	1.125	.360	.220	.180	Z20065	Z20065SS

* Tolerance: ± 1/64"





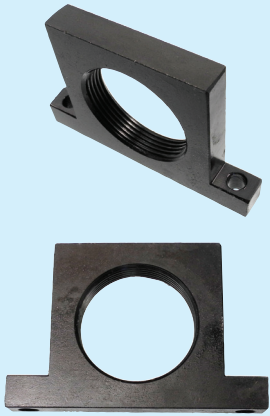
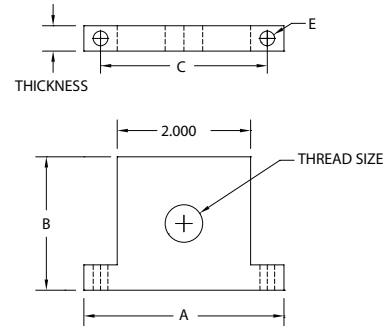
Mounting Blocks & Shaft Supports

USA **MADE**

Threaded Mounting Blocks—Lug-Mount

Lug-mount blocks for mounting threaded-body shock absorbers. Use jam nut (not included) to secure in position.

- Made in the USA
- Steel-Black Oxide



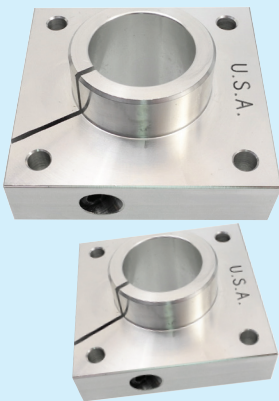
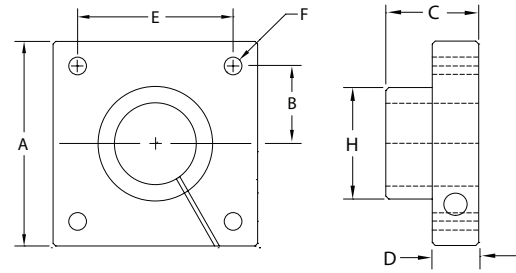
Lug Mount Blocks						
A	B	C	E	Thickness	Thread Size	Order Number
3"	2"	2.5"	.220"	.380"	9/16-18	ZLUGK26
3	2	2.5	0.22	0.38	3/4-16	ZLUGK32
3	2	2.5	0.22	0.38	7/8-14	ZLUGK33
3	2	2.5	0.22	0.38	1"-12	ZLUGK34
3	2	2.5	0.22	0.38	1-1/4"-12	ZLUGK35
3	2	2.5	0.22	0.38	1-3/8"-12	ZLUGK36
3	2	2.5	0.22	0.38	M14 x 1.5	ZLUGK41
3	2	2.5	0.22	0.38	M20 x 1.5	ZLUGK42
3	2	2.5	0.22	0.38	M25 x 1.5	ZLUGK43
3	2	2.5	0.22	0.38	M33 x 1.5	ZLUGK44
3	2	2.5	0.22	0.38	M36 x 1.5	ZLUGK45

USA **MADE**

Flange-Mount Shaft Supports

For providing support to ends of linear shafts. For use with light load shafts where shaft alignment is not critical. Commonly used with closed-style linear bearings.

- Made in the USA
- Aluminum
- Four Bolt Design



Flange Mount Shaft Supports									
FOR SHAFT OD	A	B	C	D	E	F	Bolt Size G	H	Order Number
1/2"	1-5/8"	5/8"	7/8"	1/2"	1-1/4"	0.18"	#8	1"	ZMOUNTK21
3/4	2-3/8	7/8	1	5/8	1-3/4	0.21	#10	1-1/4	ZMOUNTK22
1	2-3/4	1-1/16	1-1/4	5/8	2-1/8	0.27	1/4"	1-1/2	ZMOUNTK23
1-1/4	3-1/8	1-3/16	1-3/8	3/4	2-3/8	0.27	1/4	1-3/4	ZMOUNTK24

USA **MADE**

**SPECIAL ORDERS
AVAILABLE—
Small Quantities
to Large Volume**





Brackets for Nose-Mount Gearmotors

USA MADE

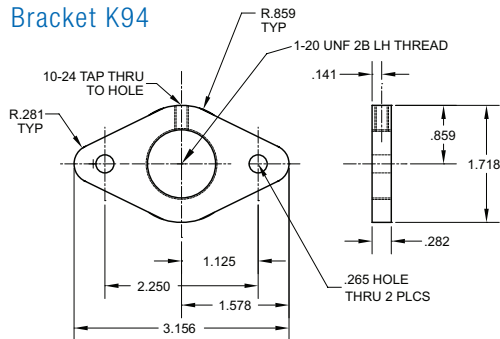
Mounting Brackets for .3 & .5 hp Nose-Mount Air-Powered Gearmotor with left-hand threads on the motor's nose. Mount in any position.

Flange-Mount Brackets

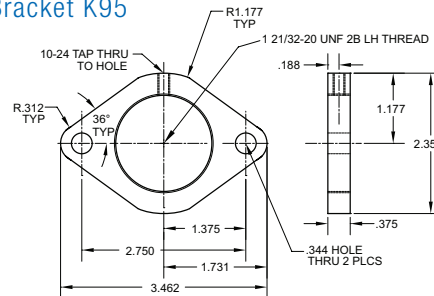
Steel with Black Oxide Finish



Bracket K94



Bracket K95

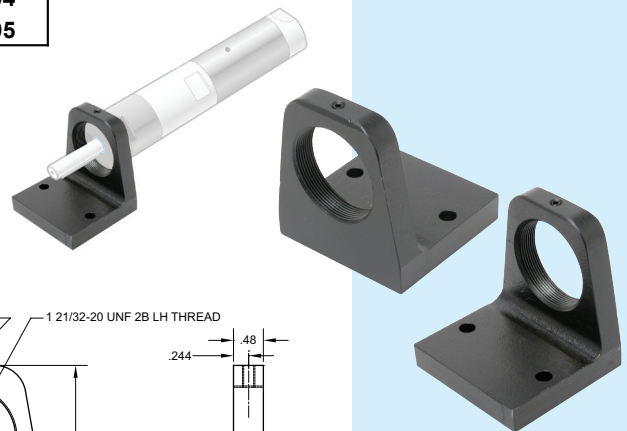


Flange-Mount Brackets			
Threads	Length	Material	Order Number
1"-20	3-1/8"	Steel-Black Oxide	BracketK94
1-21/32-20	3/1/02	Steel-Black Oxide	BracketK95

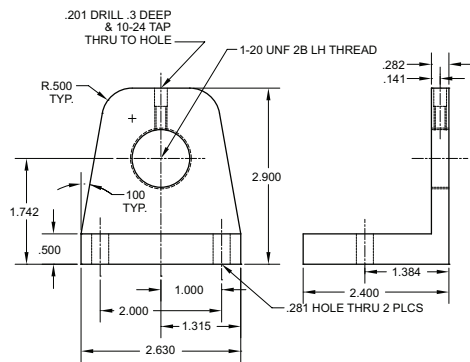
USA MADE

Foot-Mount Brackets

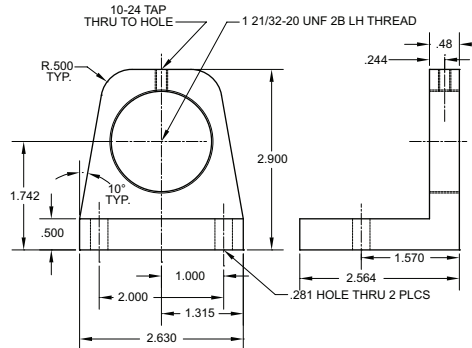
Steel with Black Oxide Finish



Bracket K91



Bracket K92



Foot-Mount Brackets		
Threads	Material	Order Number
1"-20	Steel-Black Oxide	BracketK91
1-21/32-20	Steel-Black Oxide	BracketK92

USA MADE



Accurate
Manufactured
Products
Group

Phone: 317-472-9000 • FAX: 317-472-9010 • email: sales@ampg.com • www.ampg.com





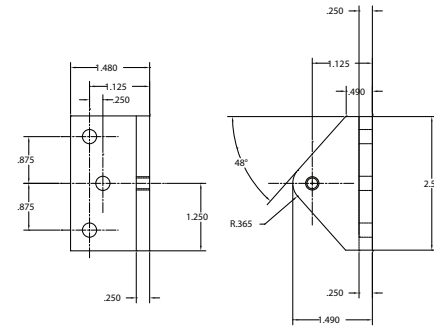
Gas Spring Attachment Points—Extra Duty

USA MADE

Extra Strong, Extra Big, Extra Duty—13mm OR 16mm Ball Stud

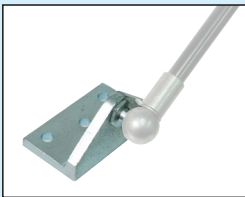
Used as mounting points for Gas Springs where extra strength is needed.
These Brackets are the thickest and strongest Brackets available from stock.

Fits Gas Springs with 13MM or 16MM Ball Sockets.
Available in: Steel-Zinc, 18-8 Stainless Steel, Type 316 S/S



Inverted Brackets

Heavy Duty— Available with 13MM or 16MM Studs
Stocked in Steel-Zinc, 18-8 Stainless Steel, Type 316 S/S



Inverted Bracket			
Steel-Zinc, 18-8 Stainless Steel, and Type 316 St/St			
Stud Size	Thickness	Material	Order Number
13mm	1/4"	Steel Zinc	FITK53
13mm	1/4	Stainless Steel	FITK53SS
13mm	1/4	Type 316 Stainless Steel	FITK53-316SS
16mm	1/4	Steel Zinc	FITK53-16MM
16mm	1/4	Stainless Steel	FITK53SS16
16mm	1/4	Type 316 Stainless Steel	FITK5316-316SS

90 Degree Angle Inverted Bracket, 1/4" Thick, (3) .260 mounting holes

USA MADE



Long Neck Brackets

Heavy Duty—Available with 13MM or 16MM Studs.
Stocked in Steel-Zinc, 18-8 Stainless Steel, Type 316 Stainless Steel



Long Neck Bracket			
Steel-Zinc, 18-8 Stainless Steel, and Type 316 St/St			
Stud Size	Thickness	Material	Order Number
13mm	1/4"	Steel Zinc	FITK52
13mm	1/4	Stainless Steel	FITK52SS
13mm	1/4	Type 316 Stainless Steel	FITK52-316SS
16mm	1/4	Steel Zinc	FITK52-16MM
16mm	1/4	Stainless Steel	FITK52SS16
16mm	1/4	Type 316 Stainless Steel	FITK5216-316SS

90 Degree Long Neck Bracket, 1/4" Thick, (3) .260 mounting holes

USA MADE

**SPECIAL ORDERS
AVAILABLE—
Small Quantities
to Large Volume**



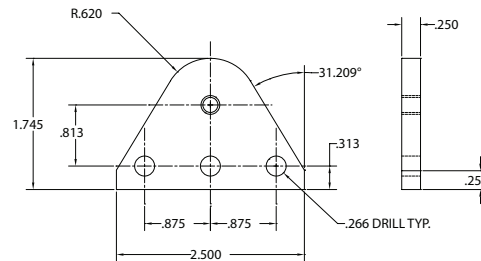


Gas Spring Attachment Points—Extra Duty **USA MADE**

Extra Strong, Extra Big, Extra Duty—13mm OR 16mm Ball Stud

Used as mounting points for Gas Springs where extra strength is needed.
These Brackets are the thickest and strongest Brackets available from stock.

Fits Gas Springs with 13MM or 16MM Ball Sockets.
Available in: Steel Zinc, 18-8 Stainless Steel, &
Type 316 Stainless Steel

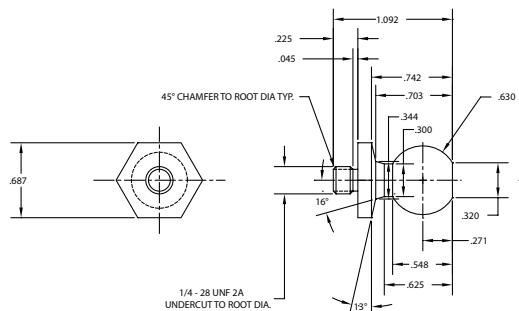


Flat Brackets

Heavy Duty— Available with 13MM or 16MM Studs
Stocked in Steel-Zinc, 18-8 Stainless Steel, Type 316 Stainless Steel

Flat Bracket			
Steel-Zinc, 18-8 Stainless Steel, and Type 316 St/St			
Stud Size	Thickness	Material	Order Number
13mm	1/4"	Steel Zinc	FITK51
13mm	1/4"	Stainless Steel	FITK51SS
13mm	1/4"	Type 316 Stainless Steel	FITK51-316SS
16mm	1/4"	Steel Zinc	FITK51-16MM
16mm	1/4"	Stainless Steel	FITK51SS16
16mm	1/4"	Type 316 Stainless Steel	FITK5116-316SS

Flat Bracket, 1/4" Thick, (3) .260 mounting holes



Ball Studs

Stocked in Steel-Zinc, 18-8 Stainless Steel, Type 316 Stainless Steel

Ball Studs		
Steel-Zinc, 18-8 Stainless Steel, and Type 316 St/St		
Stud Size	Material	Order Number
13mm	Steel Zinc	FITK54
13mm	18-8 Stainless Steel	FITK54SS
13mm	Type 316 Stainless Steel	FITK54-316SS
16mm	Steel Zinc	FITK55
16mm	Stainless Steel	FITK55SS
16mm	Type 316 Stainless Steel	FITK55-316SS





Clevis Pins

USA MADE

Double Drilled High Strength Aluminum (7075-T6) Clevis Pins

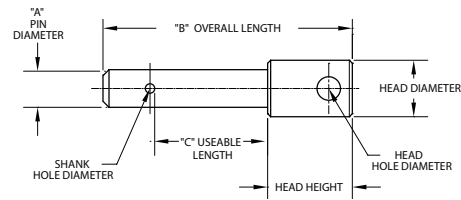
with Steel Zinc Split Ring and Aluminum Cotter Pin

All 3 components come packaged in the same bag, and comprise one complete unit.

Clevis pins are useful for quick disconnect or temporary fasteners.

Hi strength Aluminum body, with Steel Ring thru head, and Aluminum Cotter pin for the bottom.

Diameter Tolerance: -0.002 to -0.007
Usable Length Tolerance: +0.015 to -0.015
Head Diameter Tolerance: +0.015 to -0.015
Head Height Tolerance: +0.015 to -0.015
Overall Length Tolerance: +0 to -0.020



Double Drilled Aluminum Clevis Pins							
"A" Pin Diameter	"B" Overall Length	"C" Usable Length	Head Diameter	Head Height	Head Hole Diameter	Shank Hole Diameter	Order Number
1/4"	1-3/4"	3/4"	3/8"	9/16"	5/32"	1/16"	PIN500120
1/4"	2	1	3/8	9/16	5/32	1/16	PIN500122
1/4"	2-1/4	1-1/4	3/8	9/16	5/32	1/16	PIN500124
1/4"	2-1/2	1-1/2	3/8	9/16	5/32	1/16	PIN500126
3/8	2-1/4	1	1/2	3/4	1/4	1/16	PIN500130
3/8	2-1/2	1-1/4	1/2	3/4	1/4	1/16	PIN500132
3/8	2-3/4	1-1/2	1/2	3/4	1/4	1/16	PIN500134
3/8	3	1-3/4	1/2	3/4	1/4	1/16	PIN500136
3/8	3-1/4	2	1/2	3/4	1/4	1/16	PIN500138
1/2	3	1-1/2	5/8	15/16	1/4	5/32	PIN500148
1/2	3-1/4	1-3/4	5/8	15/16	1/4	5/32	PIN500150
1/2	3-1/2	2	5/8	15/16	1/4	5/32	PIN500152
1/2	4	2-1/2	5/8	15/16	1/4	5/32	PIN500156
1/2	4-1/4	3	5/8	15/16	1/4	5/32	PIN500158
3/4	4-1/8	2	7/8	1-5/16	1/4	5/32	PIN500165
3/4	4-5/8	2-1/2	7/8	1-5/16	1/4	5/32	PIN500167
3/4	5-1/8	3	7/8	1-5/16	1/4	5/32	PIN500169
3/4	5-5/8	3-1/2	7/8	1-5/16	1/4	5/32	PIN500171
3/4	6-1/8	4	7/8	1-5/16	1/4	5/32	PIN500173

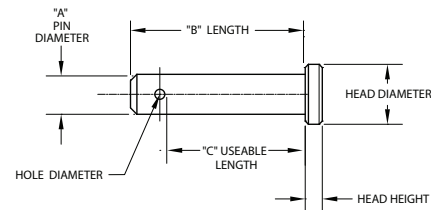
1/4 & 3/8 Diameter Pins are packed with 1/16 X 1 Aluminum Cotter Pin. 1/2 & 3/4 Diameter Pins are packed with 1/8 X 2 Aluminum Cotter Pin. 1/4" Diameter Pins have a Steel Zinc Ring thru the head 1.100 OD X .110 Thick. 3/8, 1/2, and 3/4" Diameter Pins have a Steel Zinc Ring thru the head 1.640 OD X .168 Thick. Usable Length = From under the head to start of Cotter Pin Hole

USA MADE

Stainless Steel Clevis Pins

18-8 Stainless Steel

With all the advantages of a bolt or rivet, plus quick installation or removal with the use of a cotter pin (not included). A through-hole for locking with the cotter pin on one end, headed on the other.



Clevis Pins						
"A" Pin Diameter	"B" Length	"C" Usable Length	Head Diameter	Head Height	Hole Diameter	Order Number
3/16"	1-1/8"	15/16"	.292-.327"	.050-.070"	3/32"	PIN6521871125*
	1-1/8"	15/16"	.292-.327"	.050-.070"	3/32"	PIN6521871125-A
1/2"	3/4	1/2	.610-.640	.140-.160	5/32	PIN6525000750-A
1-1/4"	4	3-3/8	1.470-1.500	.330-.350	9/16	PIN65212504000-A
	5	4-3/8	1.470-1.500	.330-.350	9/16	PIN65212505000-A

Part Numbers with "-A" on the end DO NOT include cotter pin. ONLY PIN6521871125 has included cotter pin.

USA MADE

**SPECIAL ORDERS
AVAILABLE—
Small Quantities
to Large Volume**





Clevis Pins

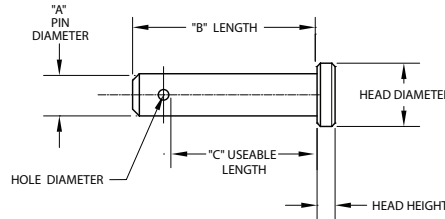
USA MADE

Oversized Precision Clevis Pins

18-8 Stainless Steel

These pins combine the locking capabilities of a clevis pin with the precision of a dowel pin for a tight fit. Pin diameter tolerance is $+.0001"$ to $+.0003"$. Cotter pin not included.

18-8 stainless steel pins are more corrosion resistant than zinc-plated steel and steel pins and may be mildly magnetic. Minimum Rockwell hardness is B80.



Oversized Precision Clevis Pins								
"A" Pin Diameter	"B" Length	"C" Usable Length	Head Diameter (Min)	Head Diameter (Max)	Head Height (Min)	Head Height (Max)	Hole Diameter	Order Number
1/4"	3/4"	9/16"	.360"	.380"	.080"	.100"	3/32"	PIN6002500750
	1	13/16	.360	.380	.080	.100	3/32	PIN6002501000
	1-1/4	1-1/16	.360	.380	.080	.100	3/32	PIN6002501250
	1-1/2	1-5/16	.360	.380	.080	.100	3/32	PIN6002501500
3/8"	1	3/4	.490	.510	.110	.130	1/8	PIN6003751000
	1-1/4	1	.490	.510	.110	.130	1/8	PIN6003751250
	1-1/2	1-1/4	.490	.510	.110	.130	1/8	PIN6003751500
	1-3/4	1-1/2	.490	.510	.110	.130	1/8	PIN6003751750
	2	1-3/4	.490	.510	.110	.130	1/8	PIN6003752000
	3	2-3/4	.490	.510	.110	.130	1/8	PIN6003753000

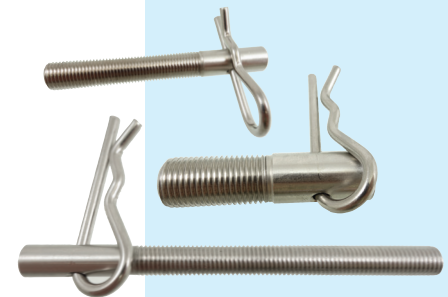
USA MADE

Connector Studs (Hood Pins)

18-8 Stainless Steel

Known as connector studs or hood pins, these clevis pins are threaded so you can bolt them to a component on one end, and lock the other end with the reusable cotter pin. Hairpin cotter length is 2".

Stud and cotter pin are 18-8 stainless steel, corrosion resistant, and may be mildly magnetic. Minimum Rockwell hardness is B89. Class 2A thread fit.



Connector Studs w/Hairpin Cotter						
Pin Dia.	Pin Overall Length	Pin Usable Length (From end of thread to start of hole)	Thread Size	Thread Length	Order Numbers	
					Connector Stud with Packaged Hairpin Cotter Pin	Connector Stud Only
5/16"	2"	1.4"	5/16-24	1"	PIN70051F32	PIN70051F32-1
	3	2.4	5/16-24	2	PIN70051F48	PIN70051F48-1
	4	3.4	5/16-24	3	PIN70051F64	PIN70051F64-1
3/8"	2"	1.4"	3/8-24	1"	PIN70038F32	PIN70038F32-1
	3	2.4	3/8-24	2	PIN70038F48	PIN70038F48-1
	4	3.4	3/8-24	3	PIN70038F64	PIN70038F64-1
1/2"	2"	1.4"	1/2-20	1"	PIN70012F32	PIN70012F32-1
	3	2.4	1/2-20	2	PIN70012F48	PIN70012F48-1
	4	3.4	1/2-20	3	PIN70012F64	PIN70012F64-1

USA MADE





Headless Clevis Pins & Blanks

USA **MADE**

Headless Clevis Pins—Extra Long

Lengths from 12" to 24" provide extra reach.
18-8 Stainless Steel provides corrosion resistance and strength.
2 Stainless Steel Cotter Pins are included with each part.



USA **MADE**



Detail of either end



Tolerances:
Length: +/- 1/16"
—straight cut off and deburred
Usable Length: +/- 1/32"
Cotter Pin Holes are drilled 1/2"
from each end

Extra Length Headless Clevis Pins—18-8 Stainless Steel							
Pin Diameter	Pin Overall Length	Usable Length	Drilled Holes	S/S Cotter Pin (2) Included	Order Number		
					S/S Cotter Pin	Clevis Pin	
3/16" (.183-.191)	12"	11"	5/64"	5/64" X 3/4"	PIN503010	LINKC005	
3/16 (.183-.191)	16	15	5/64	5/64 X 3/4	PIN503010	LINKC010	
3/16 (.183-.191)	20	19	5/64	5/64 X 3/4	PIN503010	LINKC015	
3/16 (.183-.191)	24	23	5/64	5/64 X 3/4	PIN503010	LINKC020	
1/4 (.246-.254)	12	11	5/64	5/64 X 3/4	PIN503010	LINKC180	
1/4 (.246-.254)	16	15	5/64	5/64 X 3/4	PIN503010	LINKC185	
1/4 (.246-.254)	20	19	5/64	5/64 X 3/4	PIN503010	LINKC190	
1/4 (.246-.254)	24	23	5/64	5/64 X 3/4	PIN503010	LINKC195	
5/16 (.308-.316)	12	11	7/64	7/64 X 3/4	PIN503015	LINKC280	
5/16 (.308-.316)	16	15	7/64	7/64 X 3/4	PIN503015	LINKC285	
5/16 (.308-.316)	20	19	7/64	7/64 X 3/4	PIN503015	LINKC290	
5/16 (.308-.316)	24	23	7/64	7/64 X 3/4	PIN503015	LINKC295	
3/8 (.371-.379)	12	11	7/64	7/64 X 3/4	PIN503015	LINKC370	
3/8 (.371-.379)	16	15	7/64	7/64 X 3/4	PIN503015	LINKC375	
3/8 (.371-.379)	20	19	7/64	7/64 X 3/4	PIN503015	LINKC380	
3/8 (.371-.379)	24	23	7/64	7/64 X 3/4	PIN503015	LINKC385	
1/2 (.496-.504)	12	11	5/32	5/32 X 1	PIN503020	LINKC460	
1/2 (.496-.504)	16	15	5/32	5/32 X 1	PIN503020	LINKC465	
1/2 (.496-.504)	20	19	5/32	5/32 X 1	PIN503020	LINKC470	
1/2 (.496-.504)	24	23	5/32	5/32 X 1	PIN503020	LINKC475	



Round Pin Blanks—Dowel Pin Stock

Cut end Pin Blanks manufactured from various materials.
All pins are 12" long with Chamfered Flat Ends. Ready for modifications.
4140 Alloy Steel or 300 series Stainless Steel.

Round Pin Blanks—Dowel Pin Stock			
Dowel Diameter	Dowel Length	Order Number	
		4140 Alloy Steel Plain	300 Series Stainless Steel
1/8"	12"	PIN12512	PIN12512SS
5/32	12	PIN12515	PIN12515SS
3/16	12	PIN12518	PIN12518SS
1/4	12	PIN12525	PIN12525SS
5/16	12	PIN12531	PIN12531SS
3/8	12	PIN12537	PIN12537SS
7/16	12	PIN12543	PIN12543SS
1/2	12	PIN12550	PIN12550SS
9/16	12	PIN12556	PIN12556SS
5/8	12	PIN12562	PIN12562SS
3/4	12	PIN12575	PIN12575SS
1"	12	PIN12501	PIN12501SS

Length tolerance is + 0.020/- 0.125.
Diameter tolerance is +/- .002".

USA **MADE**



**SPECIAL ORDERS
AVAILABLE—**
**Small Quantities
to Large Volume**



SMALL DIAMETER Dowel Pins

Cut end Pin Blanks manufactured from 18-8 Stainless Steel.

SMALL DIAMETER Dowel Pins		
Dowel Diameter	Dowel Length	18-8 Stainless Steel
		1/64"
1/64	3/8	PIN602015375
1/64	1/2	PIN602015500

USA **MADE**



Accurate
Manufactured
Products
Group



Spring Plunger Mounting Bases

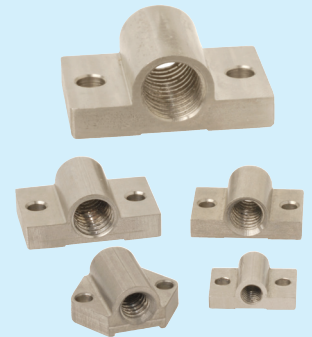
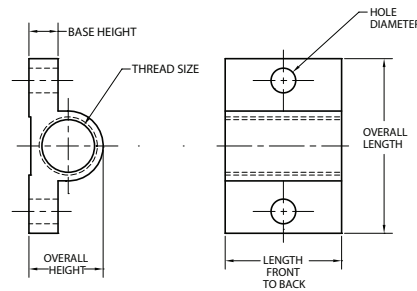
USA **MADE**

Spring Plunger Mounting Bases

Materials: Steel and Stainless Steel

Also known as Tooling Flanges, Full range of sizes from 8-32 thru 5/8-11

Used as mounting points for spring plungers and any spring-loaded devices. Used for horizontal applications without the need for custom designed blocks and fixtures.



Spring Plunger Mounting Bases—Tooling Flanges						Order Number	
Thread Size	Overall Length	Length Front to Back	Overall Height	Base Thickness	Hole Diameter	Steel	18-8
						Zinc	Stainless Steel
8-32	.690	.500	.250	.090	1/8	Z0377	Z0377SS
10-32	.690	.500	.270	.130	1/8	Z0378	Z0378SS
1/4-20	.880	.690	.410	.190	9/64	Z0379	Z0379SS
5/16-18	.940	.630	.410	.188	9/64	Z0380	Z0380SS
3/8-16	1.130	.750	.470	.219	5/32	Z0381	Z0381SS
1/2-13	1.500	1.00	.630	.250	13/64	Z0382	Z0382SS
5/8-11	1.880	1.250	.800	.312	17/64	Z0383	Z0383SS



Spring Plunger not included

USA **MADE**

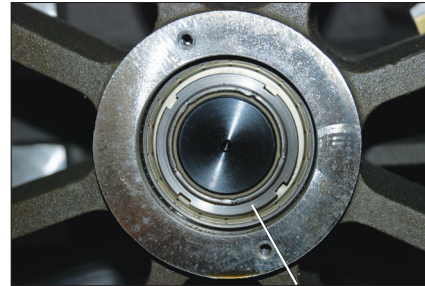
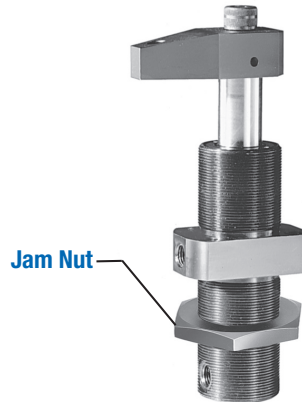
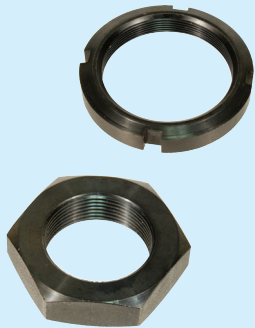


Spanner/Jam Nuts & Cut PTFE Teflon Pins

USA **MADE**

Spanner Nuts—Hydraulic Clamping Cylinder Jam Nuts

For all threaded cylinders and shock absorbers • Steel with Black Oxide Finish



Spanner Nuts—Hydraulic Clamping Cylinder Jam Nuts								
Thread Size	Outer Diameter	Thickness	Shape	Spanner Slot Width	Spanner Slot Depth	De-Sta-Co Equivalent	Fits Jergens Cylinders	Order Number
1-5/16 - 16 UN2B	1-7/8 AF	1/2"	Hex			051-131-160	60463, 60464, 60965	Z0340
1-7/8 - 16 UN2B	2-5/8	.380	Round	5/16	5/16	051-187-160	60465, 60466, 60598, 60967	Z0342
2-1/2 - 16 UN2B	3-1/4	1/2"	Round	5/16	5/16	051-250-160		Z0344

Cut Pins—Teflon (PTFE)

NO CHAMFERS—just straight cut off

Material Properties:

Teflon (PTFE)—Excellent chemical resistance, and high service temperature stability. Very good electrical resistance, and is highly weather resistant.

USA **MADE**

Pins sold in Pack of 50
Pcs ONLY—If you need
100 Pcs, order 2 packs.



Cut PTFE Teflon Pins—50 Pack

Pin Diameter	Pin Length	Order Number
.120-.130"	1/4" (+/- .005)	PIN500
.120-.130	3/8 (+/- .005)	PIN505
.120-.130	1/2 (+/- .005)	PIN510
.120-.130	1" (+/- .005)	PIN515
.182-.192"	3/8 (+/- .005)	PIN525
.182-.192	1/2 (+/- .005)	PIN530
.182-.192	3/4 (+/- .005)	PIN535
.182-.192	1" (+/- .005)	PIN540
.182-.192	1-1/2 (+/- .005)	PIN545
.245-.255"	1/2 (+/- .005)	PIN570
.245-.255	3/4 (+/- .005)	PIN575
.245-.255	1" (+/- .005)	PIN580
.245-.255	1-1/2 (+/- .005)	PIN585
.245-.255	2" (+/- .005)	PIN590

**SPECIAL ORDERS
AVAILABLE—
Small Quantities
to Large Volume**

