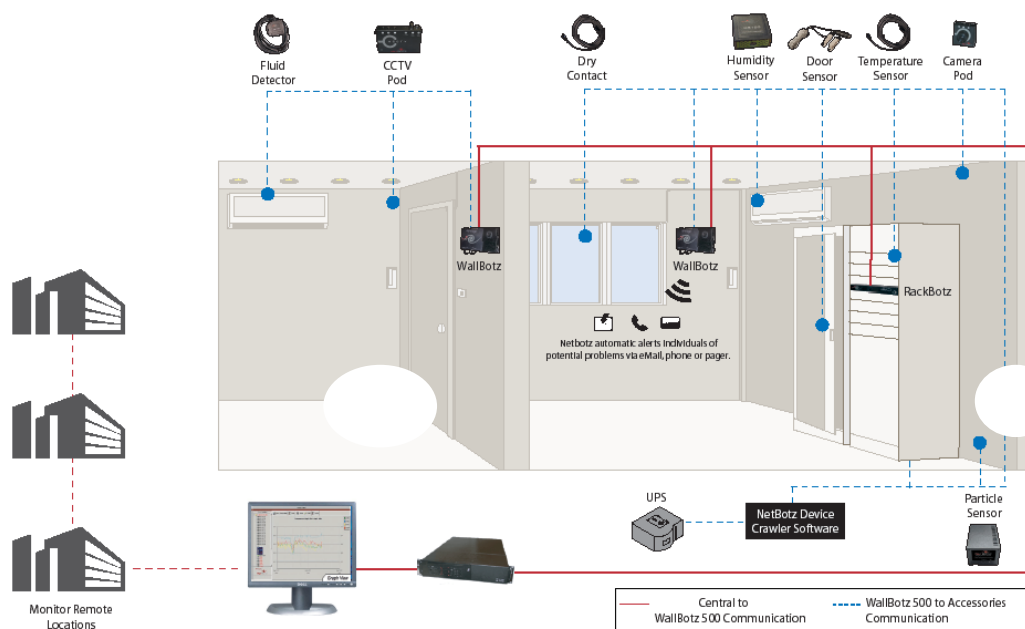


NetBotz Security & Environmental Monitoring is a scalable solution for protecting sensitive IT equipment from physical threats like high heat, fluid damage, and unauthorized access. This compatibility chart will help you select the NetBotz intelligent appliances, pods, and sensors to best monitor and protect your IT gear.



### Key Environments:

- Environmental concerns (heating, cooling, etc.)
- Distributed environment with multiple locations
- Minimum support capability (no distributed staff)
- Large data centers and businesses with IT assets that must be secured

### Features:

- Ensure business continuity by monitoring and protecting IT assets from environmental hazards or human error.
- Immediate detection minimizes IT downtime by preventing an outage or by enabling rapid response. Problems are solved before they become catastrophic.
- Integration with StruxureWare Data Center Expert provides a unified view of the entire physical infrastructure, collecting, organizing, and distributing critical alerts and information, while enabling mass, remote adjustments and updates of managed devices, including NetBotz.
- Identify faces and objects through comprehensive video monitoring in small and large rooms.



## NetBotz - Security & Environmental Monitoring



	Rack Monitor 570	Rack Monitor 450	Room Monitor 455	Room Monitor 355	Rack Monitor 250
Ideal Locations	Larger spaces such as Data Centers where security and environmental monitoring are both needed.	Medium sized spaces such as Server Rooms.	Medium sized spaces such as larger Network closets.	Smaller spaces such as basic network closets.	Areas where only environmental monitoring and/or rack access control is required
SKU Number	NBRK0570	NBRK0451	NBWL0455 / NBWL0456	NBWL0355 / NBWL0356	NBRK0250
Mounting Options	Rack-mount	Rack-mount	Wall-mount	Wall-mount	Rack-mount
Integrated Sensors	N/A	N/A	Temperature, Humidity, Airflow, Dewpoint (calculated), Camera Motion Sensor	Temperature, Humidity, Airflow, Dewpoint (calculated), Camera Motion Sensor	N/A
Number of Universal Sensors Supported	78	18	16	4	42
Number of Wireless Devices Supported	47	25	47	0	47
Number of Cameras Supported	4 USB, 4 Networked, 0 Integrated	2 USB, 0 Networked, 0 Integrated	3 USB, 2 Networked, 1 Integrated	0 USB, 0 Networked, 1 Integrated	N/A
Cameras Supported	<u>USB:</u> NetBotz Camera Pod, Analog CCTV cameras via CCTV Adapter Pod, <u>Networked:</u> Pelco: Refer to Kbase FA158450 for latest list of supported models	<u>USB:</u> NetBotz Camera Pod, Analog CCTV cameras via CCTV Adapter Pod	<u>USB:</u> NetBotz Camera Pod, Analog CCTV cameras via CCTV Adapter Pod, <u>Networked:</u> Pelco: Refer to Kbase FA158450 for latest list of supported models <u>Appliance:</u> Integrated Camera	<u>Appliance:</u> Integrated Camera	N/A
Number of Sensor Pods Supported	12	2	2	0	6
Sensor Pods Supported	Camera 160, CCTV 120, Sensor 150 and Sensor 155	Camera 160, CCTV 120, Sensor 150 and Sensor 155	Camera 160, CCTV 120, Sensor 150 and Sensor 155	N/A	Sensor 150
Number of Universal Sensor Ports	6	6	4	4	6
Other Connections Supported	Relay Output, Voltage Output, 4-20mA Sensor Input, RS-485	Relay Output, Voltage Output, 4-20mA Sensor Input	N/A	N/A	Relay Output, Voltage Output
Rack Access Pods Supported	13	0	2	0	0*
Network Support	<ul style="list-style-type: none"> <li>Web accessible</li> <li>SSL/TLS Encrypted</li> <li>Wired LAN connection (10/100)</li> <li>Serial Modem support (GSM/SMS; PPP Dial)</li> <li>Modbus output to BMS</li> </ul>	<ul style="list-style-type: none"> <li>Web accessible</li> <li>SSL/TLS Encrypted</li> <li>Wired LAN connection (10/100)</li> <li>Serial Modem support (GSM/SMS; PPP Dial)</li> <li>Modbus output to BMS**</li> </ul>	<ul style="list-style-type: none"> <li>Web accessible</li> <li>SSL/TLS Encrypted</li> <li>Wired LAN connection (10/100)</li> <li>Serial Modem support (GSM/SMS; PPP Dial)</li> <li>Modbus output to BMS**</li> </ul>	<ul style="list-style-type: none"> <li>Web accessible</li> <li>SSL/TLS Encrypted (10/100)</li> <li>Wired LAN connection (10/100)</li> </ul>	<ul style="list-style-type: none"> <li>Web accessible</li> <li>SSL/TLS Encrypted (for console access only)</li> <li>Wired LAN connection (10/100)</li> <li>Modbus output to BMS</li> </ul>



## NetBotz - Security & Environmental Monitoring



NetBotz Rack Monitor 250



NetBotz Rack Monitor 570

NetBotz Room  
Monitor 455

Rack Monitor 250  
**NBRK0250**  
 Room Monitor 355  
**NBWL0355**  
 Room Monitor 455  
**NBWL0455**  
 Rack Monitor 450  
**NBRK0451**  
 Rack Monitor 570  
**NBRK0570**

### Description

### Part No.

		<i>Rack Monitor 250</i> <b>NBRK0250</b>	<i>Room Monitor 355</i> <b>NBWL0355</b>	<i>Room Monitor 455</i> <b>NBWL0455</b>	<i>Rack Monitor 450</i> <b>NBRK0451</b>	<i>Rack Monitor 570</i> <b>NBRK0570</b>
<b>SENSORS</b>						
APC Temperature Sensor	AP9335T	X	X	X	X	X
APC Temperature & Humidity Sensor	AP9335TH	X	X	X	X	X
APC Temperature Sensor with Display	AP9520T	X		X	X	X
APC Temperature & Humidity Sensor with Display	AP9520TH	X		X	X	X
4-20mA Sensor Pod	NBPD0129			X	X	X
Rack Sensor Pod 150	NBPD0150	X		X	X	X
Room Sensor Pod 155	NBPD0155			X	X	X
Wireless Coordinator & Router	NBWC100U	X <sup>1</sup>		X	X	X
Wireless Sensor Pod 180	NBPD0180	X <sup>2</sup>		X <sup>3</sup>	X <sup>3</sup>	X <sup>4</sup>
Wireless Temperature Sensor	NBWS100T	X <sup>2</sup>		X <sup>3</sup>	X <sup>3</sup>	X <sup>4</sup>
Wireless Temperature & Humidity Sensor	NBWS100H	X <sup>2</sup>		X <sup>3</sup>	X <sup>3</sup>	X <sup>4</sup>
Spot Fluid Sensor (15ft)	NBES0301	X <sup>5</sup>	X <sup>5</sup>	X <sup>5</sup>	X <sup>5</sup>	X <sup>5</sup>
Door Switch Sensor for Rooms or 3rd party Racks (50ft)	NBES0302	X	X	X	X	X
Door Switch Sensor (2) for APC Rack (12ft)	NBES0303	X	X	X	X	X
Dry Contact Cable (15ft)	NBES0304	X	X	X	X	X
0-5V Cable (15ft)	NBES0305			X	X	X
Vibration Sensor (12ft)	NBES0306	X	X	X	X	X
Smoke (10ft)	NBES0307	X	X	X	X	X
Leak Rope Sensor (20ft)	NBES0308				X	X
Leak Rope Extension (20ft)	NBES0309				X <sup>6</sup>	X <sup>6</sup>
Temperature Sensor (0.81m)	NBES0311			X	X	X
Door Switch Sensor for 3rd Party Rack (1.57m)	NBES0312			X	X	X
Door Switch Sensor (1.57m)	NBES0313			X	X	X
Alarm Beacon	AP9324	X			X	X
Particle Sensor PS100	NBES0201			X <sup>7</sup>	X <sup>7</sup>	X <sup>7</sup>
Sensor Pod 120	NBPD0122			X	X	X
<b>RACK ACCESS CONTROL</b>						
Rack Access 125 kHz Handle Kit (for APC SX Rack)	NBHN0125	X <sup>8</sup>				
Rack Access 13.56 MHz Handle Kit (for APC SX Rack)	NBHN1356	X <sup>8</sup>				
Rack Access Pod 170, Handles, Door Contacts (for APC SX Rack)	NBPD0171			X <sup>9</sup>		X <sup>10</sup>
Rack Access Pod 170, Handles, Door Contacts (for Chatsworth GlobalFrame Rack)	NBPD0172			X <sup>9</sup>		X <sup>10</sup>
<b>CAMERAS</b>						
Camera Pod 160	NBPD0160			X	X	X
CCTV Adapter Pod 120 with USB cable (16ft/5m)	NBPD0129			X	X	X
Pelco IP Camera: Sarix Family of Cameras	-			X		X
Pelco IP Camera: Spectra IV IP Family of Cameras	-			X		X
Pelco IP Camera: Spectra Mini IP Family of Cameras	-			X		X
Pelco IP Camera: IP110 Camclosure Family of Cameras	-			X		X
Pelco IP Camera IP3701 Family of Cameras	-			X		X
<b>POWER SUPPLIES</b>						
Power Supply Univ 24VDC Output	AP9505I				X <sup>11</sup>	X <sup>11</sup>
PoE Injector	NBAC0303		X <sup>12</sup>	X <sup>12</sup>		
<b>HARDWARE ADD-ONS</b>						
Surface Mounting Brackets for NetBotz Room Monitor Appliance or Camera Pod	NBAC0301		X <sup>13</sup>	X <sup>13</sup>		
Pack Mounting Brackets for NetBotz Camera Pod 160	NBAC0302			X <sup>14</sup>	X <sup>14</sup>	X <sup>14</sup>
HID Proximity Cards - 10Pack	AP9370-10					



## NetBotz - Security & Environmental Monitoring

Description	Part No.					
		Rack Monitor 250 NBRK0250	Room Monitor 355 NBWL0355	Room Monitor 455 NBWL0455	Rack Monitor 450 NBRK0451	Rack Monitor 570 NBRK0570
<b>CABLES</b>						
USB Latching Repeater Cable, LSZH (5m)	NBAC0213L			X <sup>14</sup>	X <sup>14</sup>	X <sup>14</sup>
USB Latching Repeater Cable, Plenum (5m)	NBAC0213P			X <sup>14</sup>	X <sup>14</sup>	X <sup>14</sup>
USB Latching Cable, LSZH (5m)	NBAC0214L			X <sup>14</sup>	X <sup>14</sup>	X <sup>14</sup>
USB Latching Cable, Plenum (5m)	NBAC0214P			X <sup>14</sup>	X <sup>14</sup>	X <sup>14</sup>
<b>MANAGEMENT</b>						
StruxureWare Data Center Expert Basic	AP9465	X	X	X	X	X
StruxureWare Data Center Expert Standard	AP9470	X	X	X	X	X
StruxureWare Data Center Expert Enterprise	AP9475	X	X	X	X	X
StruxureWare Data Center Expert VM	AP94VMTRL	X	X	X	X	X
<b>SOFTWARE</b>						
Advanced Software Pack #1	NBWN0005			X	X	X <sup>15</sup>
Device Monitoring Pack (5 Nodes)	NBWN0006			X	X	X
Surveillance Base (15 Nodes)	NBSV1000		X <sup>16</sup>	X <sup>16</sup>	X <sup>16</sup>	X <sup>16</sup>
Surveillance Add On Pack (5 Nodes)	NBSV1005		X <sup>16</sup>	X <sup>16</sup>	X <sup>16</sup>	X <sup>16</sup>
Surveillance Add On Pack (10 Nodes)	NBSV1010		X <sup>16</sup>	X <sup>16</sup>	X <sup>16</sup>	X <sup>16</sup>
Surveillance Add On Pack (25 Nodes)	NBSV1025		X <sup>16</sup>	X <sup>16</sup>	X <sup>16</sup>	X <sup>16</sup>
<b>SUPPORT CONTRACTS</b>						
Base - 2 Yr Software Support Contract for NBWL0355/NBWL0455	WNBWN0001		X	X		
Base - 2 Yr Software Support Contract for NBRK0450/NBRK0550/NBRK0570	WNBWN0002				X	X
Extension - 1 Yr Software Support Contract & 1 Yr Hardware Warranty for NBWL0355/NBWL0455	WNBWN0003		X <sup>17</sup>	X <sup>17</sup>		
Extension - 1 Yr Software Support Contract & 1 Yr Hardware Warranty for NBRK0450/NBRK0570	WNBWN0004				X <sup>17</sup>	X <sup>17</sup>

- The NetBotz 250 includes (1) NBWC100U Wireless Coordinator/Router and (1) NBWS100T Wireless Temperature Sensor
- Each NetBotz 250 appliance can connect up to a maximum of (48) wireless devices ((1) x NBWC100U as coordinator and any number of sensors up to a maximum combination of (47) x NBWC100U/NBWS100T/NBWS100H/NBPD0180) and up to (6) NBPD0150/NBPD0155 (plus integrated pod in the appliance)
- Each appliance can connect up to a maximum of (48) wireless devices ((1) x NBWC100U as coordinator and any number of sensors up to a maximum combination of (47) x NBWC100U/NBWS100T/NBWS100H/NBPD0180) and up to (2) NBPD0150/NBPD0155 (plus integrated pod in the appliance)
- Each appliance can connect up to a maximum of (48) wireless devices ((1) x NBWC100U as coordinator and any number of sensors up to a maximum combination of (47) x NBWC100U/NBWS100T/NBWS100H/NBPD0180) and up to (12) NBPD0150/NBPD0155 (plus integrated pod in the appliance)
- Recommended maximum of 2 spot Fluid Sensors are installed per Pod or Appliance
- SKU may only be used with NBES0308 NetBotz Leak Rope Sensor
- SKU may only be used with NBPD0122 NetBotz Sensor Pod 120
- NBACS0125 includes entire rack access kit of NBHN0125, NBES0303, and NBRK0250; likewise, NBACS1356 includes both NBHN1356, NBES0303, and NBRK0250
- Each Netbotz 455 appliance can support up to a maximum of (2) rack access pods, requiring one AP95051 power supply
- Each Netbotz 550/570 appliance can support up to a maximum of (13) rack access pods, requiring one AP95051 power supply for the fourth attached pod, plus an additional power supply for each additional four pods
- Power supply is included with the NBRK0451 & NBRK0551
- Use SKUs NBWL0356 and NBWL0456 to include PoE injector (NBAC0303) with purchase of NetBotz 355 and 455, respectively
- Included with Room Monitor Appliances and NBPD0160 NetBotz Camera Pod
- Option can be used with Camera Pod 160 and/or as extender for NBWC100U Wireless Coordinator, to clear Coordinator/Router from rack for better signal strength
- Software comes preinstalled on NetBotz 500 series, and is available for purchase separately on the 400 series only
- Option must be used with NetBotz appliances and Data Center Expert
- Netbotz units can be covered under warranty for a maximum of (5) years (i.e. 2 yr base warranty + 3 extensions), and warranty extensions can only be purchased for Netbotz appliances that are currently under both hardware and software warranties