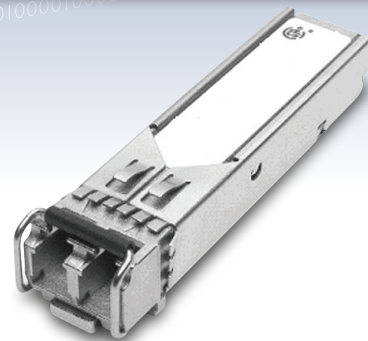


SPFX Series

Small Form Pluggable (SFP) Modules

The Allied Telesis SPFX Series offers the latest industry standard in flexible, full-duplex Fast Ethernet connectivity. These hot-swappable, fiber interfaces simply plug into a SFP slot on SFP compatible products. Configurations can be optimized to meet varied distance and service requirements.



Options

The Allied Telesis SPFX Series offers short haul, long haul and Bi-Directional (BiDi) solutions. This flexibility allows a network manager to extend the distance and bandwidth of their network.

Using an SFP Bi-Directional transceiver can upgrade transmission capacity on a typical network without installing new fibers by utilizing a single fiber for both the send/receive signals.

Product Compatibility

The SPFX Series SFPs are compatible with all the Allied Telesis range of products that support 100Mbps SFP uplink connections.

The Allied Telesis SPFX Series SFPs are Multi-Sourcing Agreement (MSA) compliant. They fully comply with industry standard networking regulations. This compliance allows the Allied Telesis SFPs to be used with other MSA-compliant platform's that support SFP uplink connections.

For Cisco compatibility please refer to the 'SFP Compatibility Flyer'

Standard Data Rates Supported

Optical Fast Ethernet

Environmental Specifications

Operating Temperature: 0°C to 70°C (32°F to 158°F)
 Operating humidity: 0% to 85%, non-condensing
 Storage Temperature: -40°C to 85°C (-40°F to 185°F)
 Storage humidity: 0% to 80%, non-condensing

Ordering Information

AT-SPFX/2

2km, 100FX (LC), 1310nm

AT-SPFX/2-90

2km, 100FX (LC), 1310nm, TAA Compliant

AT-SPFX/15

15km, 100FX (LC), 1310nm

AT-SPFXBD-LC-13

15km, 100FX, BiDi SFP (1310/1550)

AT-SPFXBD-LC-15

15km, 100FX, BiDi SFP (1550/1310)

Key Features

- ▶ Compact size
- ▶ Flexible architecture
- ▶ Plug and Play ease-of-use
- ▶ Self-locking mechanism
- ▶ MSA Compliant
- ▶ Two Year Warranty*

* Warranties may be region specific, for local warranty periods please visit the support section on the website or contact your local sales office

Technical Specifications

PRODUCT	FIBER TYPE	CONNECTOR TYPE	MAXIMUM DISTANCE	WAVELENGTH (nm)	TRANSMIT		RECEIVE SENSITIVITY (dBm)	POWER BUDGET (dBm)	OVERLOAD
					MINIMUM	MAXIMUM			
SPFX/2	MMF	LC	2km	1310	-20	-14	-31	11	0
SPFX/15	SMF	LC	15km	1310	-15	-8	-31	16	-8
SPFXBD-LC-13	SMF	LC	15km	1310/1550	-14	-8	-31	17	-3
SPFXBD-LC-15	SMF	LC	15km	1550/1310	-14	-8	-31	17	-3