

2911 Series

Gigabit Ethernet Network Interface Cards

AT-2911SX/ST

AT-2911STX/LC

AT-2911SX/SC

AT-2911LTX/SC

AT-2911SX/LC

AT-2911LTX/LC

AT-2911LX/SC

AT-2911SX/2LC

AT-2911LX/LC

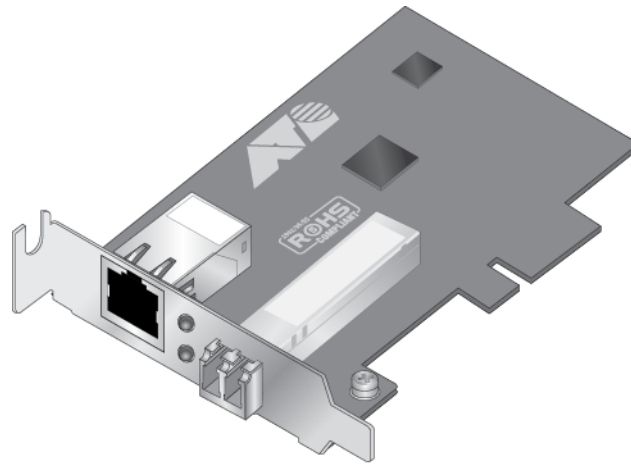
AT-2911LX/2LC

AT-2911SFP

AT-2911SFP/2

AT-2911STX/SC

AT-2911T/2



2482

Installation and User's Guide

Copyright © 2016 Allied Telesis, Inc.

All rights reserved. No part of this publication may be reproduced without prior written permission from Allied Telesis, Inc. Microsoft and Internet Explorer are registered trademarks of Microsoft Corporation. Netscape Navigator is a registered trademark of Netscape Communications Corporation. All other product names, company names, logos or other designations mentioned herein are trademarks or registered trademarks of their respective owners.

Allied Telesis, Inc. reserves the right to make changes in specifications and other information contained in this document without prior written notice. The information provided herein is subject to change without notice. In no event shall Allied Telesis, Inc. be liable for any incidental, special, indirect, or consequential damages whatsoever, including but not limited to lost profits, arising out of or related to this manual or the information contained herein, even if Allied Telesis, Inc. has been advised of, known, or should have known, the possibility of such damages.

Electrical Safety and Emissions Standards

This product meets the following standards:

Federal Communications Commission Interference Statement

Declaration of Conformity

Manufacturer Name: **Allied Telesis, Inc.**

Declares that the product: **Gigabit Ethernet Network Interface Cards**

Model Numbers: **AT-2911SX/ST, AT-2911SX/SC, AT-2911SX/LC, AT-2911LX/SC, AT-2911LX/LC, AT-2911SFP, AT-2911STX/SC, AT-2911STX/LC, AT-2911LTX/SC, AT-2911LTX/LC, AT-2911SX/2LC, AT-2911LX/2LC, AT-2911SFP/2, and AT-2911T/2**

This device complies with Part 15 of the FCC Rules. Operation is subject to the following two conditions: (1) This device may not cause harmful interference, and (2) this device must accept any interference received, including interference that may cause undesired operation.

This equipment has been tested and found to comply with the limits for a Class B digital device, pursuant to Part 15 of the FCC Rules. These limits are designed to provide reasonable protection against harmful interference in a residential installation. This equipment generates, uses and can radiate radio frequency energy and, if not installed and used in accordance with the instructions, may cause harmful interference to radio communications. However, there is no guarantee that interference will not occur in a particular installation. If this equipment does cause harmful interference to radio or television reception, which can be determined by turning the equipment off and on, the user is encouraged to try to correct the interference by one of the following measures:

- Reorient or relocate the receiving antenna.
- Increase the separation between the equipment and receiver.
- Connect the equipment into an outlet on a circuit different from that to which the receiver is connected.
- Consult the dealer or an experienced radio/TV technician for help.



Caution

FCC Caution: Any changes or modifications not expressly approved by the party responsible for compliance could void the user's authority to operate this equipment. ⚡ E80



Avertissement

Avertissement de la FCC: Les changements ou modifications non expressément approuvés par la partie responsable de la conformité pourraient annuler l'autorité de l'utilisateur à utiliser cet équipement. ⚡ E80

This transmitter must not be co-located or operating in conjunction with any other antenna or transmitter.

The band from 5600-5650MHz will be disabled by the software during the manufacturing and cannot be changed by the end user. This device meets all the other requirements specified in Part 15E, Section 15.407 of the FCC Rules.

Radiation Exposure Statement:

This equipment complies with FCC radiation exposure limits set forth for an uncontrolled environment. This equipment should be installed and operated with minimum distance 20cm between the radiator & your body.

European Union Restriction of the Use of Certain Hazardous Substances (RoHS) in Electrical and Electronic Equipment

This Allied Telesis RoHS-compliant product conforms to the European Union Restriction of the Use of Certain Hazardous Substances (RoHS) in Electrical and Electronic Equipment. Allied Telesis ensures RoHS conformance by requiring supplier Declarations of Conformity, monitoring incoming materials, and maintaining manufacturing process controls.

Safety and Electromagnetic Emissions Certificates

Standard Compliance

- RoHs compliant
- European Union RoHS (Directive 2011/65/EU of the European Parliament and of the Council of 8 June 2011 on the restriction of the use of certain hazardous substances in electrical and electronic equipment.)
- China RoHs compliant

Certificates

- CE
- EAC
- FCC/IC
- RCM


Electromagnetic Compatibility (EMC)

- EN 55022
- EN 55024
- AS/NZS CISPR 22
- FCC 47 CFR Part 15, Subpart B

Safety

- EN 60950-1
- TUV-T
- UL 60950-1

Translated Safety Statements

Important: The  indicates that a translation of the safety statement is available in a PDF document titled “Translated Safety Statements” on the Allied Telesis website at www.alliedtelesis.com/support.

Contents

Preface	13
Safety Symbols Used in this Document	14
Contacting Allied Telesis	15
Chapter 1: Overview	17
Physical Description	18
AT-2911 Series Single Port Adapters	18
AT-2911 Series Dual Port Adapters	19
ST Fiber Optic Connector	19
SC Fiber Optic Connector	20
LC Fiber Optic Connector	20
Twisted Pair Copper Port	20
SFP Slot	21
LEDs	21
Model Naming Conventions	22
Supported Operating Systems	23
Features	24
Broadcom Utilities	25
Teaming	25
CIM	25
SNMP	25
User Diagnostics	26
Installing Broadcom Utilities	26
Broadcom Documentation	26
Contents of Your Shipment	27
Warranty Registration	28
Chapter 2: Installing the Hardware	29
Reviewing Safety Precautions	30
Pre-Installation Checklist	32
Replacing the Bracket	33
Installing the AT-2911 Series Adapter Card	35
Connecting the Network Cables	39
Fiber Optic Cable	39
Twisted Pair Copper Cable	40
SFP Transceiver	40
Chapter 3: Modifying Advanced Properties	41
Overview	42
Guidelines	42
Twisted pair copper port	42
Accessing Advanced Properties	43
802.3az EEE	45
ARP Offload	47
EEE Control	48
Ethernet@WireSpeed	49
Flow Control	51
Interrupt Moderation	53
IPv4 Checksum Offload	54
Jumbo Mtu	55
Large Send Offload (IPv4)	56

Large Send Offload v2 (IPv4)	58
Large Send Offload v2 (IPv6)	60
Network Address	61
NS Offload	63
Priority & VLAN	64
Receive Buffers	66
Receive Side Scaling	67
RSS Queues	68
Speed & Duplex	70
TCP/UDP Checksum Offload (IPv4)	72
TCP/UDP Checksum Offload (IPv6)	74
Virtual Machine Queues	76
VLAN ID	77
VMQ Lookahead Split	78
VMQ VLAN Filtering	79
Chapter 4: Installing the Driver Software	81
Overview	82
Guidelines	82
Installing Linux Driver	82
Downloading the Driver Software	83
Accessing the Device Manager	85
Accessing Device Manager on Windows Server 2008 R2, Server 2008, Vista, or 7	85
Accessing Device Manager on Windows Server 2003 and XP	86
Installing the Driver Software	89
Installing the Driver Software on Windows Server 2008 R2, Server 2008, Vista, or 7	89
Installing the Driver Software on Windows Server 2003 and XP	92
Updating the Driver Software	97
Updating the Driver on Windows Server 2008 R2, Server 2008, Vista, or 7	97
Updating the Driver on Windows Server 2003 and XP	98
Chapter 5: Uninstalling the Driver Software	101
Overview	102
Guidelines	102
Uninstalling the Driver Software	103
Chapter 6: Troubleshooting	105
Troubleshooting Checklist	106
Checking a Port LED on the Adapter	107
Testing Network Connectivity	108
Software Problems and Solutions	109
Microsoft Remote Installation Service (RIS) Instructions	109
Windows Server 2003	109
Miscellaneous	109
Appendix A: Specifications	111
Physical and Power Specifications	112
Environmental Specifications	113
Power Specifications	114
Performance Specification	115
Optical Specifications	116
Appendix B: Cleaning Fiber Optic Connectors	117
Overview	118
Cleaning Fiber Optic Connectors Using a Cartridge-Type Cleaner	119
Cleaning Fiber Optic Connector Using a Swab	121

Figures

Figure 1: AT-2911SX/SC Adapter	18
Figure 2: AT-2911LTX/LC Adapter	19
Figure 3: ST Fiber Optic Connector	19
Figure 4: SC Fiber Optic Connector	20
Figure 5: LC Fiber Optic Connector	20
Figure 6: Twisted Pair Cable Port	20
Figure 7: Pin and RJ-45 Connector Pin Layout	21
Figure 8: SFP Slot	21
Figure 9: AT-2911 Model Naming Conventions	22
Figure 10: Removing the Low-Profile Bracket	33
Figure 11: Fastening Screws onto Standard Bracket	34
Figure 12: Removing the PC Cover	35
Figure 13: Removing the Faceplate From PCIe Slot	36
Figure 14: Inserting the Network Adapter Card	37
Figure 15: Securing the Adapter Card	37
Figure 16: Properties Window	43
Figure 17: Advanced Properties Window	44
Figure 18: 802.3az EEE Page	45
Figure 19: ARP Offload Page	47
Figure 20: EEE Control Page	48
Figure 21: Ethernet@WireSpeed Page	49
Figure 22: Flow Control Page	51
Figure 23: Interrupt Moderation Page	53
Figure 24: IPv4 Checksum Offload Page	54
Figure 25: Jumbo Mtu Page	55
Figure 26: Large Send Offload (IPv4) Page	56
Figure 27: Large Send Offload v2 (IPv4) Page	58
Figure 28: Large Send Offload (IPv6) Page	60
Figure 29: Network Address Page	61
Figure 30: NS Offload Page	63
Figure 31: Priority & VLAN Page	64
Figure 32: Receive Buffers Page	66
Figure 33: Receive Side Scaling Page	67
Figure 34: RSS Queues Page	68
Figure 35: Speed & Duplex Page	70
Figure 36: TCP/UDP Checksum Offload (IPv4) Page	72
Figure 37: TCP/UDP Checksum Offload (IPv6) Page	74
Figure 38: Virtual Machine Queues Page	76
Figure 39: VLAN ID Page	77
Figure 40: VMQ Lookahead Split Page	78
Figure 41: VMQ VLAN Filtering Page	79
Figure 42: Software Downloads Search Result Example	83
Figure 43: Specifying the Folder for Unzipped Files	84
Figure 44: System Window on Windows Server 2008 R2, Server 2008, Vista, and 7	85
Figure 45: Device Manager Window on Windows Server 2008 R2, Server 2008, Vista, and 7	86
Figure 46: System Properties Window on Windows Server 2003 and XP	87
Figure 47: Hardware Page on Windows Server 2003 and XP	87
Figure 48: Device Manager Window on Windows Server 2003 and XP	88
Figure 49: Ethernet Controller on Windows Server 2008 R2, Server 2008, Vista, and 7	90
Figure 50: Update Driver Software Window on Windows Server 2008 R2, Server 2008, Vista, and 7	90

Figures

Figure 51: Update Device Software Window on Windows Server 2008 R2, Server 2008, Vista, and 791

Figure 52: Update Device Software Window on Windows Server 2008 R2, Server 2008, Vista, and 792

Figure 53: Ethernet Controller on Windows Server 2003 and XP.....93

Figure 54: Hardware Update Wizard 193

Figure 55: Hardware Update Wizard 294

Figure 56: Hardware Update Wizard 395

Figure 57: Hardware Update Wizard 495

Figure 58: Device Manager with an Expanded List on Windows Server 2008 R2, Server 2008, Vista and 798

Figure 59: Network Adapters on Windows Server 2003 & XP99

Figure 60: Confirm Device Uninstall Window.....103

Figure 61: Command Window with ping displayed108

Figure 62: Ferrule in an SC Connector Plug.....118

Figure 63: Unclean and Clean Ferrule.....118

Figure 64: Cartridge Cleaner119

Figure 65: Rubbing the Ferrule Tip on the Cleaning Surface119

Figure 66: Lint-Free and Alcohol-Free Swabs121

Figure 67: Cleaning a Recessed Ferrule121

Tables

Table 1: LED Status	21
Table 2: AT-2911 Model Naming Conventions	22
Table 3: 1000BASE-X Fiber Optic Cable Specifications	39
Table 4: Physical Specifications	112
Table 5: Environmental Specifications	113
Table 6: Power Specifications	114
Table 7: MTBF Specifications	115
Table 8: Optical Specifications	116

Preface

This manual is the installation and user's guide for the AT-2911 Series Gigabit Ethernet Network Adapters. The adapters included in this series are:

- ❑ AT-2911SX/ST
- ❑ AT-2911SX/SC
- ❑ AT-2911SX/LC
- ❑ AT-2911LX/SC
- ❑ AT-2911LX/LC
- ❑ AT-2911SFP
- ❑ AT-2911STX/SC
- ❑ AT-2911STX/LC
- ❑ AT-2911LTX/SC
- ❑ AT-2911LTX/LC
- ❑ AT-2911SX/2LC
- ❑ AT-2911LX/2LC
- ❑ AT-2911SFP/2
- ❑ AT-2911T/2

The instructions in this guide explain how to install the network adapter on a desktop computer, install and uninstall the driver software, and configure the driver software.

This preface contains the following sections:

- ❑ "Safety Symbols Used in this Document" on page 14
- ❑ "Contacting Allied Telesis" on page 15

Safety Symbols Used in this Document

This document uses the following conventions:

Note

Notes provide additional information.



Caution

Cautions inform you that performing or omitting a specific action may result in equipment damage or loss of data.



Warning

Warnings inform you that performing or omitting a specific action may result in bodily injury.



Warning

Warnings inform you that an eye and skin hazard exists due to the presence of a Class 1 laser device.

Contacting Allied Telesis

If you need assistance with this product, you may contact Allied Telesis technical support by going to the Support & Services section of the Allied Telesis web site at **www.alliedtelesis.com/support**. You can find links for the following services on this page:

- ❑ 24/7 Online Support - Enter our interactive support center to search for answers to your questions in our knowledge database, check support tickets, learn about Return Merchandise Authorization (RMA), and contact Allied Telesis technical experts.
- ❑ USA and EMEA phone support - Select the phone number that best fits your location and customer type.
- ❑ Hardware warranty information - Learn about Allied Telesis warranties and register your product online.
- ❑ Replacement Services - Submit an RMA request via our interactive support center.
- ❑ Documentation - View the most recent installation guides, user guides, software release notes, white papers and data sheets for your product.
- ❑ Software Updates - Download the latest software releases for your product.

For sales or corporate contact information, go to **www.alliedtelesis.com/purchase** and select your region.

Chapter 1

Overview

This chapter contains an overview for the AT-2911 Series Gigabit Ethernet Network Adapters and includes the following sections:

- ❑ “Physical Description” on page 18
- ❑ “Model Naming Conventions” on page 22
- ❑ “Supported Operating Systems” on page 23
- ❑ “Features” on page 24
- ❑ “Broadcom Utilities” on page 25
- ❑ “Broadcom Documentation” on page 26
- ❑ “Contents of Your Shipment” on page 27
- ❑ “Warranty Registration” on page 28

Physical Description

The AT-2911 Series Gigabit Ethernet Network Adapters are integrated Ethernet network interface cards based on Broadcom's BCM5718 chipset with a PCI Express (PCIe) x1 version 2 interface.

The AT-2911 series adapter connects a PCIe compliant computer to a Gigabit Ethernet network. Allied Telesis offers models equipped with a single port interface or dual port interface in the AT-2911 series. The AT-2911 adapter is equipped with single or dual fiber optic connector, copper connector, SFP slot, or a combination of these connectors.

AT-2911 Series Single Port Adapters

The following AT-2911 series models are equipped with a single port interface:

- ❑ AT-2911SX/ST
- ❑ AT-2911SX/SC
- ❑ AT-2911SX/LC
- ❑ AT-2911LX/SC
- ❑ AT-2911LX/LC
- ❑ AT-2911SFP

The AT-2911SX/SC adapter card is shown in Figure 1.

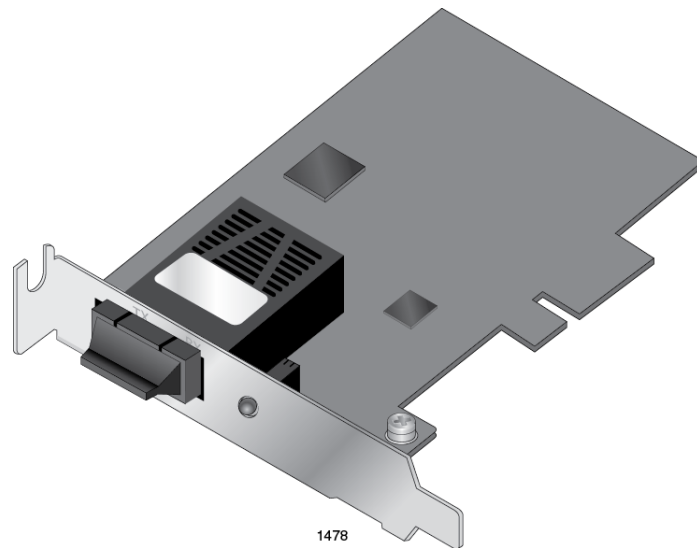


Figure 1. AT-2911SX/SC Adapter

AT-2911 Series Dual Port Adapters

The following AT-2911 series models are equipped with a dual port interface:

- ❑ AT-2911STX/SC
- ❑ AT-2911STX/LC
- ❑ AT-2911LTX/SC
- ❑ AT-2911LTX/LC
- ❑ AT-2911SX/2LC
- ❑ AT-2911LX/2LC
- ❑ AT-2911SFP/2
- ❑ AT-2911T/2

The AT-2911LTX/LC adapter is shown in Figure 2.

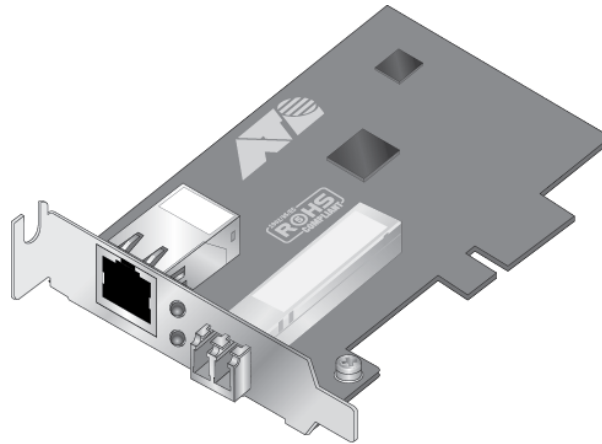


Figure 2. AT-2911LTX/LC Adapter

ST Fiber Optic Connector

The AT-2911SX/ST adapter is equipped with a 1000BASE-SX ST fiber optic connector for attaching to a compatible link partner.

The ST fiber optic connector is shown in Figure 3.

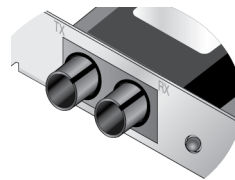


Figure 3. ST Fiber Optic Connector

To connect the adapter to a network cable, you must have a fiber optic network cable with the ST connector.

SC Fiber Optic Connector

The AT-2911SX/SC, AT-2911LX/SC, AT-2911STX/SC, and AT-2911LTX/SC, adapters are equipped with a 1000BASE-SX or 1000BASE-LX SC fiber optic connector.

The SC fiber optic connector is shown in Figure 4.

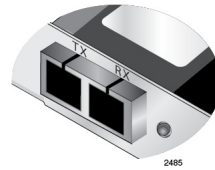


Figure 4. SC Fiber Optic Connector

To connect the adapter to a network cable, you must have a fiber optic network cable with the SC connector. For more information, see “1000BASE-X Fiber Optic Cable Specifications” on page 39.

LC Fiber Optic Connector

The AT-2911SX/LC, AT-2911LX/LC, AT-2911STX/LC, AT-2911LTX/LC, AT-2911SX/2LC, and AT-2911LX/2LC adapters are equipped with a 1000BASE-SX or 1000BASE-LX LC fiber optic connector. The AT-2911LX/2LC and AT-2911SX/2LC adapters have two LC connectors.

The LC fiber optic connector is shown in Figure 5.

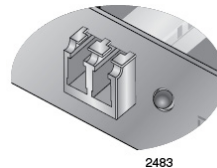


Figure 5. LC Fiber Optic Connector

To connect the adapter to a network cable, you must have a fiber optic network cable with the LC connector.

Twisted Pair Copper Port

The AT-2911STX/SC, AT-2911STX/LC, AT-2911LTX/LC adapters are equipped with a port for a 10/100/1000BASE-T twisted pair cable. The AT-2911T/2 adapter has two ports.

The twisted pair cable port is shown in Figure 6.

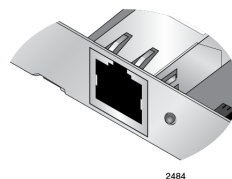


Figure 6. Twisted Pair Cable Port

The pin layout to a port and RJ-45 connector is illustrated in Figure 7.

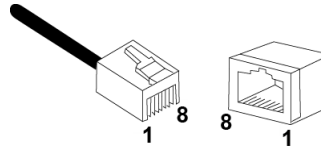


Figure 7. Pin and RJ-45 Connector Pin Layout

SFP Slot The AT-2911SFP adapter has an SFP slot that you can plug in an SFP transceiver to connect the adapter to a compatible link partner. The AT-2911SFP/2 adapter has two SFP slots.

Note

The SFP slot is not hot-swappable. Shut down the PC that your network adapter is installed in, insert an SFP transceiver into the SFP slot, and restart the PC.

Note

An SFP transceiver must be purchased separately. For a list of supported transceivers, contact your Allied Telesis distributor or reseller.

The SFP slot is shown in Figure 8.

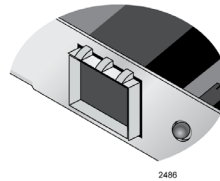


Figure 8. SFP Slot

LEDs The AT-2911 series adapter has an LED per port.

Table 1 describes the link states that the LED indicates.

Table 1. LED Status

State	Description
On	Valid link.
Off	No link.
Flashing	Data traffic is present between the adapter and the switch.

Model Naming Conventions

The hardware features of the AT-2911 adapters are represented by the letters and numbers in the model names. The conventions for the AT-2911 adapters are identified in Figure 9.

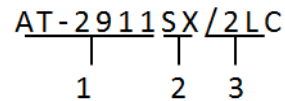


Figure 9. AT-2911 Model Naming Conventions

The conventions are defined in Table 2.

Table 2. AT-2911 Model Naming Conventions

Convention	Definition
1	Indicates the product name
2	Identifies the physical layer standard for Gigabit Ethernet transmission or SFP option. The following is a list of standards: <ul style="list-style-type: none"> ❑ SX - 1000BASE-SX multi-mode fiber optic cable ❑ LX - 1000BASE-LX single-mode fiber optic cable ❑ T - 10/100/1000BASE-T twisted-pair cable ❑ STX - dual port of SX fiber optic and twisted-pair cable ❑ LTX - dual port of LX fiber optic and twisted-pair cable ❑ SFP - SFP slot
3	Identifies the type of fiber optic connector and the number of connectors. The connectors are listed here: <ul style="list-style-type: none"> ❑ ST - ST connector ❑ SC - SC connector ❑ LC - LC connector The AT-2911 Series offers single and dual port. Number 2 means that the model has two ports of same type.

Supported Operating Systems

The following list shows the supported operating systems for the AT-2911 series adapters:

- Windows XP 32-bit
- Windows XP 64-bit
- Windows Server 2003 32-bit
- Windows Server 2003 64-bit
- Windows Vista 32-bit
- Windows Vista 64-bit
- Windows Server 2008 32-bit
- Windows Server 2008 64-bit
- Windows 7 32-bit
- Windows 7 64-bit
- Windows Server 2008 R2 64-bit
- Linux 2.6
- Linux 3.x

Features

The AT-2911 adapter supports the following features:

- One or two interfaces
- x1 PCI Express v2.0
- PXE 2.0 remote boot support
- Flow control (IEEE 802.3x)
- VLAN tag support (IEEE 802.1Q)
- Jumbo packet (9K)
- TCP, IP, and UDP checksum
- TCP segmentation
- Transmit Side Scaling (TSS)
- Receive Side Scaling (RSS)
- 17 Receive Queues
- 16 Transmit Queues
- 17 MXI-x Vectors support per queue
- Link/Activity LED per port
- SNMP MIB II
- Comprehensive diagnostic and configuration software
- ACPI 1.1a compliant
- RoHS compliant
- Teaming
- Manageability (CIM and SNMP)
- User Diagnostics
- No hot-swappable SFP slot

Broadcom Utilities

The AT-2911 series adapter, which has a Broadcom's BCM5718 chipset inside, supports teaming and management functions, such as CIM and SNMP. In addition, you can run a series of diagnostic tests on your AT-2911 series adapter using Broadcom's user diagnostics utility. To configure and run these functions, you must install the utilities that Broadcom provides.

Teaming Teaming is a method of grouping network adapters together in your system as a team and making a team of network adapters function as a single adapter.

To configure teaming, you must have Broadcom Advanced Server Program (BASP) on your host computer. BASP runs within Broadcom Advance Control Suite (BACS), an integrated utility that enables tests, analyses, and diagnostics for network adapters installed in your system.

To install BASP and BACS, download the Broadcom Management Application Installer on the Allied Telesis website as described in "Installing Broadcom Utilities" on page 26.

For more information about teaming and how to install BASP and BACS, see the *Broadcom NetXtreme® 57XX User Guide*. To view the document, refer to "Broadcom Documentation" on page 26.

CIM The Common Information Model (CIM) is an industry standard defined by the Distributed Management task Force (DMTF). Broadcom's CIM data provider provides information through various classes and you can view them using a CIM client application.

To configure CIM, you must have the CIM provider and BACS on your host computer. To install CIM provider and BACS, download the Broadcom Management Application Installer on the Allied Telesis website as described in "Installing Broadcom Utilities" on page 26.

For more information about CIM and how to install the CIM provider and BACS, see the *Broadcom NetXtreme® 57XX User Guide*. To view the document, see "Broadcom Documentation" on page 26.

SNMP Simple Network management Protocol (SNMP) is an internet-standard protocol for managing devices on IP networks. The AT-2911 series adapter supports SNMP.

To configure SNMP, you must have the SNMP subagent and BACS on your host computer. To install SNMP subagent and BACS, download the Broadcom Management Application Installer on the Allied Telesis website as described in "Installing Broadcom Utilities" on page 26.

For more information about SNMP and how to install SNMP subagent and BACS, see the *Broadcom NetXtreme® 57XX User Guide*. To view the document, see “Broadcom Documentation” on page 26.

User Diagnostics

The Broadcom User Diagnostics utility is an MS-DOS based application that allows you to run a series of diagnostic tests on the AT-2911 series adapters.

To run the user diagnostics, you must install the Broadcom user diagnostics utility. Download the user diagnostics utility on the Allied Telesis website as described in “Installing Broadcom Utilities,” next.

For more information about the Broadcom User Diagnostics utility, see the *Broadcom NetXtreme® 57XX User Guide*. To view the document, see “Broadcom Documentation” on page 26.

Installing Broadcom Utilities

To download Broadcom utilities, do the following:

1. Open a web browser, such as Internet Explorer or FireFox, on your system and enter the following:

<http://www.alliedtelesis.com/support/software>

The Allied Telesis Software Download page is displayed.

2. Enter “2911” in the search box and press the enter key.
3. Select the Broadcom Management Applications Installer or User Diagnostics.
4. Save the zip folder onto your system.

Broadcom Documentation

You can view more detailed information for the following features and topics for the AT-2911 series adapter in the *Broadcom NetXtreme® 57XX User Guide* including;

- Introduction - Teaming
- Introduction - Manageability
- Installing Linux Driver Software
- Installing Management Applications
- Configure Teaming (Windows)
- Using Broadcom Advance Control Suite
- User diagnostics.

To access this document, click on the following link:

www.broadcom.com/docs/support/ethernet_nic/Broadcom_NetXtreme_Server_17.0.pdf.

Contents of Your Shipment

The following items are included with your AT-2911 series adapter:

Antistatic bag

The adapter is shipped in an antistatic bag. It protects the module when stored or shipped. Keep the module in its packaging until ready for installation.

Standard-profile bracket

The standard-profile bracket is a faceplate whose length is longer than the low-profile bracket. The AT-2911 series adapters from a factory are shipped with a low-profile bracket attached; however, you can replace it with the standard-profile bracket if your PCIe slot is the standard-profile size.

Note

The AT-2911 adapter is not shipped with a software driver CD. You must download the driver software from the Allied Telesis website. See Chapter 4, "Downloading the Driver Software" on page 83.

Inform your network supplier of any missing or damaged items. If you need to return the module, you must pack it in the original (or equivalent) packing material or the warranty will be voided. See "Contacting Allied Telesis" on page 15.

The product documentation is available in Portable Document Format (PDF) on our web site at www.alliedtelesis.com/support/software/. You can view the documents online or download them onto a local workstation or server.

Warranty Registration

Allied Telesis hardware products are covered under limited warranties.

All Allied Telesis warranties are subject to and provided only on the terms and conditions set out in the Allied Telesis Limited Warranties listed on the Allied Telesis website at www.alliedtelesis.com/support/warranty.

Chapter 2

Installing the Hardware


This chapter contains the following sections:

- ❑ “Reviewing Safety Precautions” on page 30
- ❑ “Pre-Installation Checklist” on page 32
- ❑ “Replacing the Bracket” on page 33
- ❑ “Installing the AT-2911 Series Adapter Card” on page 35
- ❑ “Connecting the Network Cables” on page 39

Reviewing Safety Precautions

Please review the following safety precautions before you begin to install a module.

Note

The  indicates that a translation of the safety statement is available in a PDF document titled “Translated Safety Statements” posted on the Allied Telesis website at www.alliedtelesis.com/support.




Warning

This is a “Class 1 LED product”.  L1




Warning

Do not stare into the laser beam.  L2




Warning

Do not look directly at the fiber optic cable ends or inspect the cable ends with an optical lens.  L6




Warning


Do not work on this equipment or cables during periods of lightning activity.  E2



Warning

Operating Temperature: This product is designed for a maximum ambient temperature of 40 degrees C.  E7

Note

All Countries: Install this product in accordance with local and National Electric Codes.  E8

**Warning**

The module is being installed in a system that operates with voltages that can be lethal. Before you remove the cover of your system, you must observe the following precautions to protect yourself and to prevent damage to the system components.

- Remove any metallic objects or jewelry from your hands and wrists.
 - Make sure to use only insulated or nonconducting tools.
 - Verify that the system is powered OFF and unplugged before accessing internal components.
 - Installation or removal of modules must be performed in a static-free environment. The use of a properly grounded wrist strap or other personal antistatic devices and an antistatic mat is strongly recommended. ⚡ E39
-

Pre-Installation Checklist

Before installing the AT-2911 series adapter, check the following list:

1. Check that your computer has an appropriate open PCIe slot.
2. Verify that your computer is using the latest BIOS.
3. When you download the driver software from the Allied Telesis website, record the path to where the driver file resides on your system.
4. If your computer is active, shut it down.
5. When the system shutdown is complete, power off and unplug your system.
6. Holding the adapter by the edges, remove it from its shipping package and place it on an antistatic surface.
7. Check the adapter for visible signs of damage, particularly on the edge connector.

Note

Do not attempt to install a damaged adapter. If the adapter is damaged, report it to Allied Telesis. See "Contacting Allied Telesis" on page 15.

Replacing the Bracket

The AT-2911 series adapter is shipped with the low-profile bracket attached to the adapter. Depending on your PC, you may need to replace the bracket attached to your adapter.

The following procedure describes how to remove the low-profile bracket from the adapter and replace it with the standard bracket. You can also use this procedure to remove the standard bracket and replace it with the low-profile bracket.

To replace the low-profile bracket with the standard bracket, perform the following procedure:

1. Remove the screws that attach the bracket to the adapter. See Figure 10.

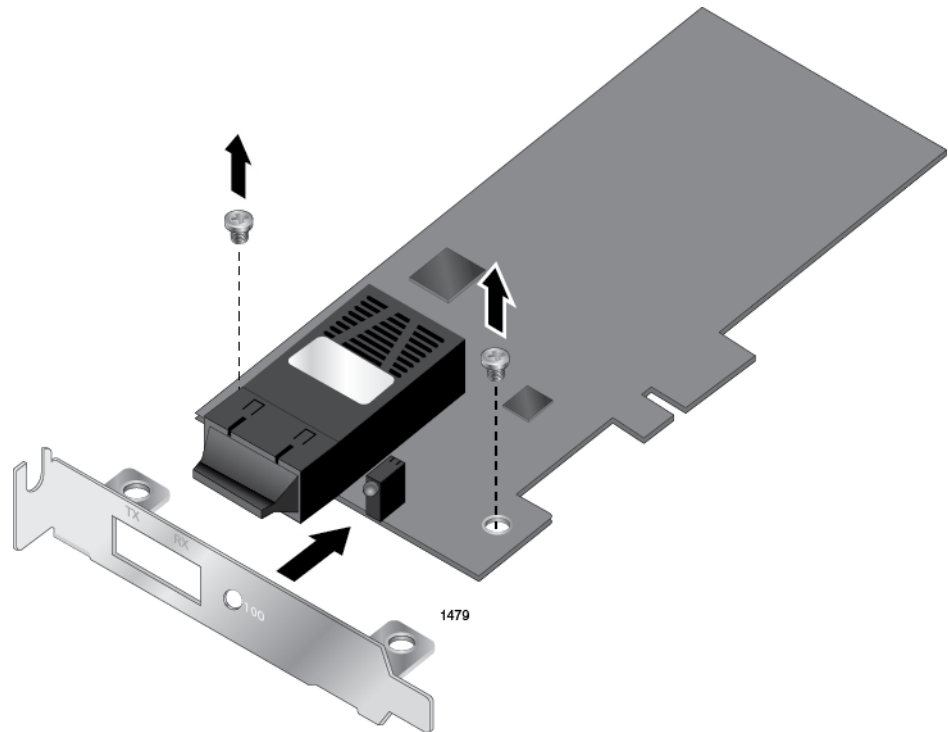


Figure 10. Removing the Low-Profile Bracket

2. Align the tabs of the standard bracket with the holes on the adapter and fasten the screws onto the adapter. See Figure 11.

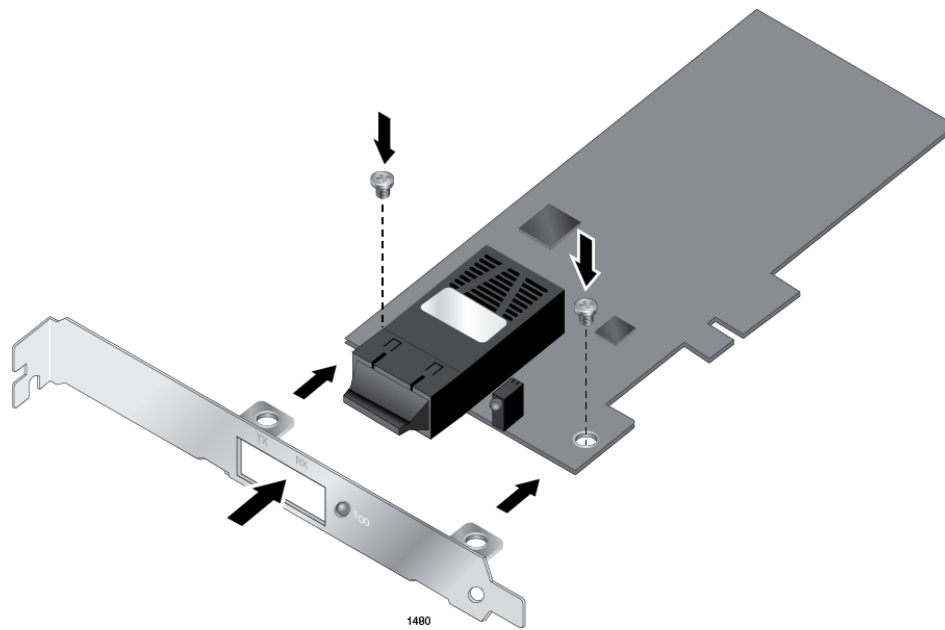


Figure 11. Fastening Screws onto Standard Bracket

Installing the AT-2911 Series Adapter Card

The following instructions describe how to install an AT-2911 series adapter in most systems. Refer to the manuals that were supplied with your system for details about performing these tasks on your particular system.

To install an AT-2911 series adapter, perform the following procedure:

1. Review “Reviewing Safety Precautions” on page 30 and “Pre-Installation Checklist” on page 32.

Before installing the adapter, ensure the system power is OFF and unplugged from the power outlet, and that proper electrical grounding procedures have been followed.



Warning

To prevent electric shock, do not remove the cover. No user-serviceable parts inside. This unit contains hazardous voltages and should only be opened by a trained and qualified technician. To avoid the possibility of electric shock, disconnect electric power to the product before connecting or disconnecting the cables. ⚡ E1

2. Remove the system cover. See Figure 12.

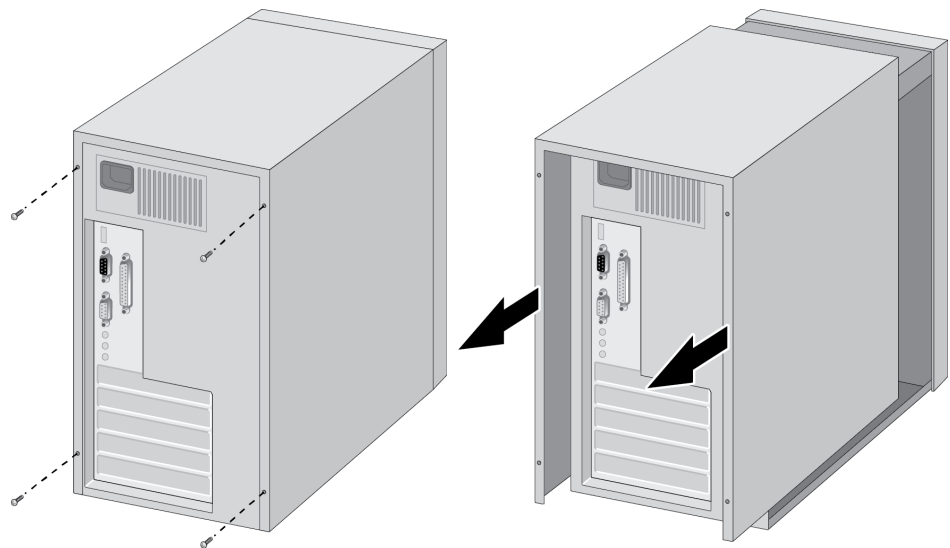


Figure 12. Removing the PC Cover

3. Select any appropriate empty PCIe slot.

If you do not know how to identify an appropriate PCIe slot, refer to your system documentation.

4. Remove the faceplate that is directly in line with the PCIe slot you selected. See Figure 13.

Keep the faceplate in a safe place. You may need it for future use.

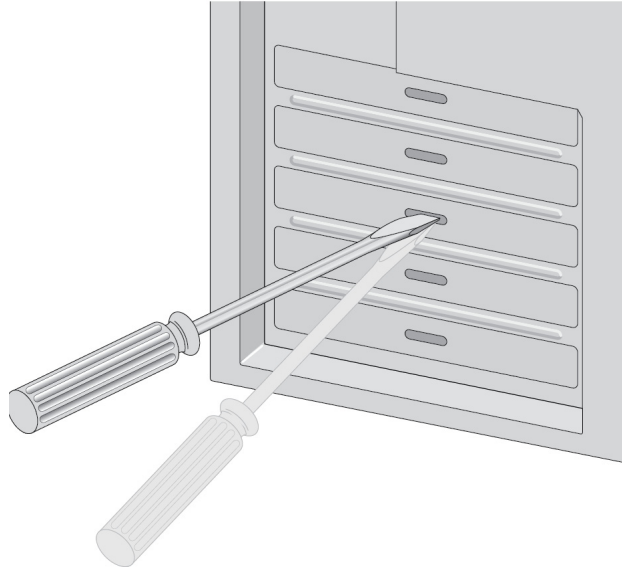


Figure 13. Removing the Faceplate From PCIe Slot

Note

If you cannot locate or know how to find an appropriate PCIe slot, refer to the documentation that came with your system.

5. Remove the network adapter card from the shipping package and store the packaging material in a safe location.



Caution

A module can be damaged by static electricity. Be sure to observe all standard electrostatic discharge (ESD) precautions, such as wearing an antistatic wrist strap, to avoid damaging the device.

see E74

6. Applying even pressure at both corners of the card, push the adapter card until it is firmly seated in the PCIe slot you have selected.

Make sure the card is securely seated. See Figure 14.

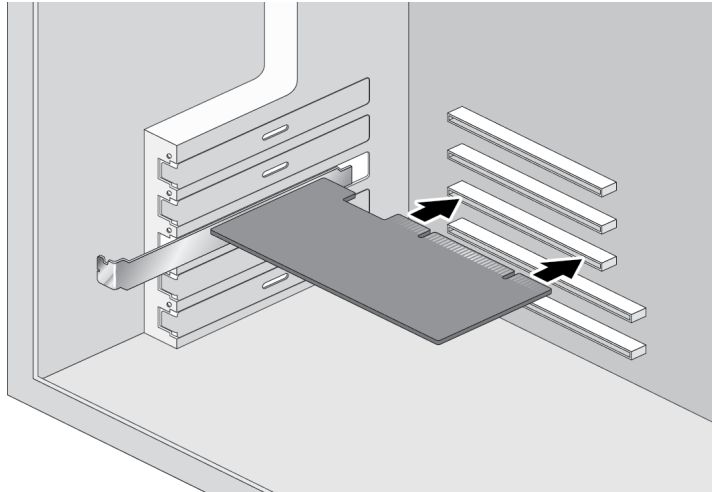


Figure 14. Inserting the Network Adapter Card



Caution

Do not use excessive force when seating the module, because this may damage the system or the module. If the module resists seating, remove it from the system, realign it, and try again. ⚡ E47

7. Secure the network adapter card to the chassis with a Phillips-head screw (not provided) as shown in Figure 15 on page 37.

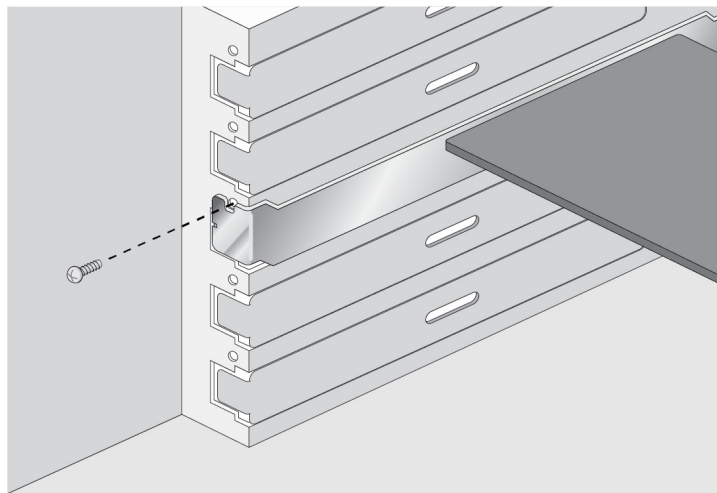


Figure 15. Securing the Adapter Card

8. Replace the system's cover and secure it with the screws removed in Step 2.
9. Power the system on.

Note

When you installed the adapter in a Windows Operating system before installing the driver software, the Found New Hardware Wizard launches automatically except Windows 7 and Windows Server 2008 R2 systems. For installing the driver software, refer to the section for your Windows Operating system.

Once the system returns to proper operation, the adapter card is fully installed. Next, connect the network cables. See “Connecting the Network Cables” on page 39.

Connecting the Network Cables

After you install an AT-2911 series adapter in your desktop computer, attach the system to a compatible link partner or an IEEE 802.3 compliant Gigabit Ethernet switch. The adapter has a fiber optic connector, copper connector, SFP slot, or a combination of these connectors.

Note

You must have a fiber optic or copper cable to connect your system to the network. If your adapter has an SFP slot, you must have an SFP transceiver as well. Contact your Allied Telesis distributor or reseller for a list of supported transceivers.

Fiber Optic Cable

The AT-2911 series fiber optic adapters are equipped with two types of fiber optic connectors: SC and LC connectors. For optical characteristics of the AT-2911 adapter, see Appendix A, "Specifications" on page 111. In addition, the AT-2911 data sheet is available on the Allied Telesis website: www.alliedtelesis.com.

To connect a fiber optic network cable to the adapter, perform the following procedure:

1. Prepare a fiber optic cable according to the specifications in Table 3.

Table 3. 1000BASE-X Fiber Optic Cable Specifications

Port Type	Connector	Media	Maximum Distance
1000BASE-SX	Fiber Optic	50 μ m multimode 850 nm	550 meters (1,804 feet)
1000BASE-SX	Fiber Optic	62.5 μ m multimode 850 nm	275 meters (853 feet)
1000BASE-LX	Fiber Optic	9.125 μ m single mode 1310 nm	10 kilometer (6.213 miles)



Warning

The fiber optic ports contain a Class 1 laser device. When the ports are disconnected, always cover them with the provided plug. Exposed ports may cause skin or eye damage. ⚠ L4

2. Remove a rubber plug from the adapter.
3. Connect one end of the fiber optic cable to the adapter.

4. Connect the other end of the fiber optic cable to the appropriate Ethernet network port or fiber optic port.

After connecting the system to the network and power is supplied, the adapter performs auto-negotiation and attempts to establish the connection at 1000 Mbps full-duplex only. The adapter port LED should be functional at this point. See Table 1 on page 21 for a description of adapter port LED operation.

Note

Even minor smudges or dirt on the end face of the fiber can disrupt light transmission and lead to failure of the connection. For instructions that describe how to clean the fiber optic connector, see Appendix B “Cleaning Fiber Optic Connectors” on page 117

Twisted Pair Copper Cable

If your AT-2911 series adapter is equipped with a twisted pair copper port, you need a copper network cable with RJ-45 connectors. See “Twisted Pair Copper Port” on page 20.

1. Connect one end of the cable to the adapter.
2. Connect the other end of the cable to the appropriate Ethernet network port or twisted pair copper port.

After connecting the system to the network and power is supplied, the adapter performs auto-negotiation and attempts to establish the connection at the appropriate speed and duplex mode.

SFP Transceiver

If your AT-2911 series adapter is equipped with an SFP slot, you must have an SFP transceiver and an appropriate cable.

1. Insert an SFP transceiver into the SFP socket on the adapter until the SFP transceiver snaps into place in the socket.
2. Remove a plug from the SFP transceiver.
3. Connect one end of the cable to the SFP transceiver.
4. Connect the other end of the cable to the appropriate Ethernet network port or an appropriate port.

After connecting the system to the network and power is supplied, the adapter performs auto-negotiation and attempts to establish the connection at 1000 Mbps full-duplex only.

Chapter 3

Modifying Advanced Properties

This chapter includes the following topics:

- ❑ “Overview” on page 42
- ❑ “Accessing Advanced Properties” on page 43
- ❑ “802.3az EEE” on page 45
- ❑ “ARP Offload” on page 47
- ❑ “EEE Control” on page 48
- ❑ “Ethernet@WireSpeed” on page 49
- ❑ “Flow Control” on page 51
- ❑ “Interrupt Moderation” on page 53
- ❑ “IPv4 Checksum Offload” on page 54
- ❑ “Jumbo Mtu” on page 55
- ❑ “Large Send Offload (IPv4)” on page 56
- ❑ “Large Send Offload v2 (IPv4)” on page 58
- ❑ “Large Send Offload v2 (IPv6)” on page 60
- ❑ “Network Address” on page 61
- ❑ “NS Offload” on page 63
- ❑ “Priority & VLAN” on page 64
- ❑ “Receive Buffers” on page 66
- ❑ “Receive Side Scaling” on page 67
- ❑ “RSS Queues” on page 68
- ❑ “Speed & Duplex” on page 70
- ❑ “TCP/UDP Checksum Offload (IPv4)” on page 72
- ❑ “TCP/UDP Checksum Offload (IPv6)” on page 74
- ❑ “Virtual Machine Queues” on page 76
- ❑ “VLAN ID” on page 77
- ❑ “VMQ Lookahead Split” on page 78
- ❑ “VMQ VLAN Filtering” on page 79

Overview

To modify the advanced properties of the AT-2911 adapter, you must access Device Manager on your operating system, then go to each advanced property page.

Guidelines

Here are the guidelines to modifying the advanced properties:

- To change the advanced property settings, you must have Administrator privileges.
- When you upgrade the driver software, the settings of the advanced properties may change. Verify the settings after upgrading the driver software.

Twisted pair copper port

In addition to the advanced properties listed on page 41, twisted pair copper ports have the following properties:

- Wake Up Capabilities
- WOL Speed

Wake Up Capabilities

The Wake Up Capabilities property enables the network adapter to wake up from a low-power mode when it receives a network wake-up frame. Two types of wake-up frames are available: Magic Packet and Wake Up Frame.

WOL Speed

The WOL Speed property allows you to set the speed at which the adapter connects to a network while the adapter is in the Wake on LAN (WOL) mode.

Accessing Advanced Properties

To modify advanced properties, first access Device Manager, open the properties of your AT-2911 series adapter, and select a feature you want to change its setting.

1. To access the Device Manager, follow one of these procedures:
 - ❑ “Accessing Device Manager on Windows Server 2008 R2, Server 2008, Vista, or 7” on page 85
 - ❑ “Accessing Device Manager on Windows Server 2003 and XP” on page 86
2. In the Device Manager window, double-click Allied Telesis AT-2911xx Gigabit Fiber Ethernet.

The properties window pops up as shown in Figure 16.

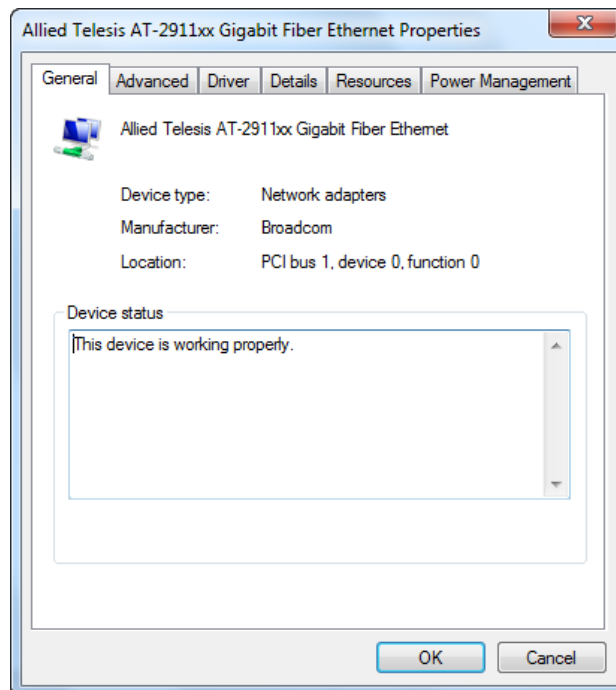


Figure 16. Properties Window

3. Click the **Advanced** tab.

The Advanced Properties window opens as shown in Figure 17.

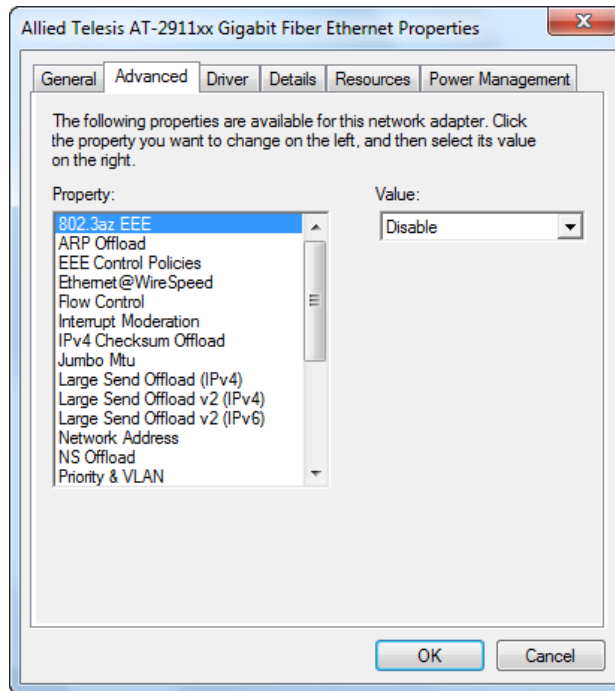


Figure 17. Advanced Properties Window

802.3az EEE

The 802.3az EEE (Energy-Efficient Ethernet) feature allows you to reduce power consumption when the network link is idle.

Note

This feature is valid only for copper ports. For fiber connectors, the setting is always disabled.

To enable or disable the 802.3az EEE feature, do the following:

1. Access the Advanced Properties.

See “Accessing Advanced Properties” on page 43.

2. Select **802.3az EEE** in the Property box.

The 802.3az EEE page is displayed as shown in Figure 18.

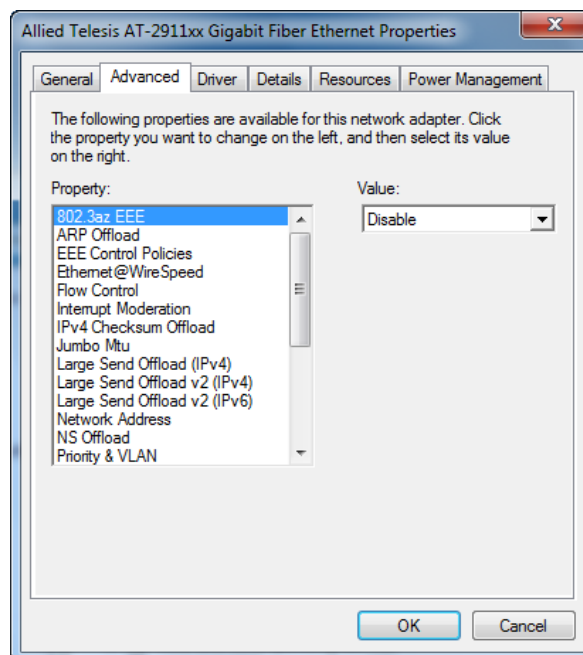


Figure 18. 802.3az EEE Page

3. Select one of the following options:

- Disable** — The Energy-Efficient Ethernet feature is off. This is the default setting.

Note

For fiber connectors, the setting is always disabled.

- Enable** — The adapter saves energy consumption when the link is idle.

4. Click **OK**.

ARP Offload

The ARP Offload feature, one of the network power management features, allows the adapter to respond to an ARP request without waking up the computer.

To enable or disable the ARP Offload feature, do the following:

1. Access the Advanced Properties.

See “Accessing Advanced Properties” on page 43.

2. Select **ARP Offload** in the Property box.

The ARP Offload page is displayed as shown in Figure 19.

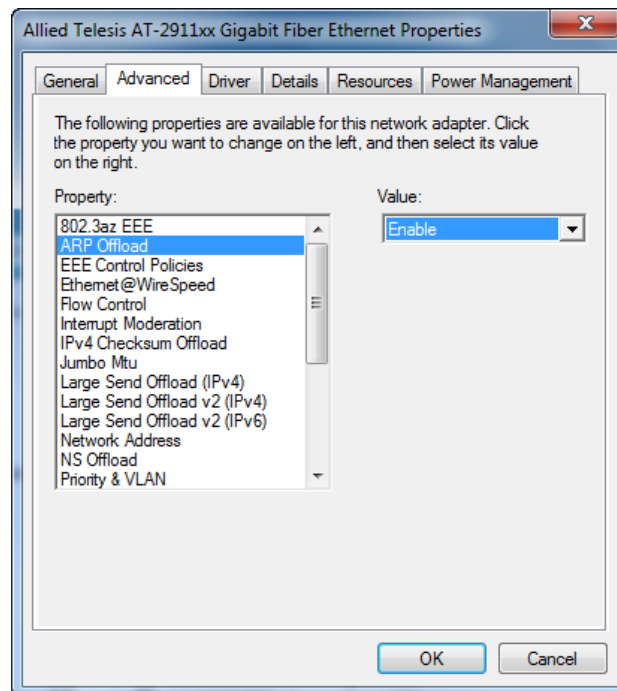


Figure 19. ARP Offload Page

3. Select one of the following options:

- Disable** — The computer wakes up from sleep mode and responds to an ARP request.
- Enable** — The adapter responds to an ARP request without waking up the computer. This is the default setting.

4. Click **OK**.

EEE Control

The EEE (Energy-Efficient Ethernet) Control feature allows you prioritize power saving, performance, optimal power, and performance.

To change the setting of the EEE Control feature, do the following:

1. Access the Advanced Properties.

See “Accessing Advanced Properties” on page 43.

2. Select **EEE Control** in the Property box.

The EEE Control page is displayed as shown in Figure 20.

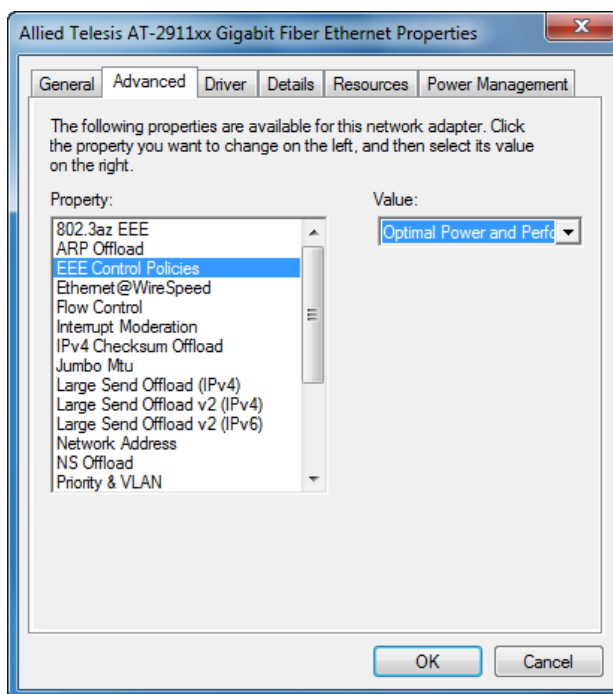


Figure 20. EEE Control Page

3. Select one of the following options:
 - Optimal Power and Performance** — The adapter manages the best trade-off between energy efficiency and performance. This is the default setting.
 - Maximum Performance** — The adapter manages power for the best performance.
 - Maximum Power Saving** — The adapter manages power for the best energy saving.
4. Click **OK**.

Ethernet@WireSpeed

The Ethernet@WireSpeed feature enables the adapter with a twisted pair copper interface to establish a link at a lower speed when only two pairs of wires are available in the connected cable.

Note

This feature is valid only for copper ports. For fiber connectors, the setting is always disabled.

To enable or disable the Ethernet@WireSpeed feature, do the following:

1. Access the Advanced Properties.

See “Accessing Advanced Properties” on page 43.

2. Select **Ethernet@WireSpeed** in the Property box.

The Ethernet@WireSpeed page is displayed as shown in Figure 21.

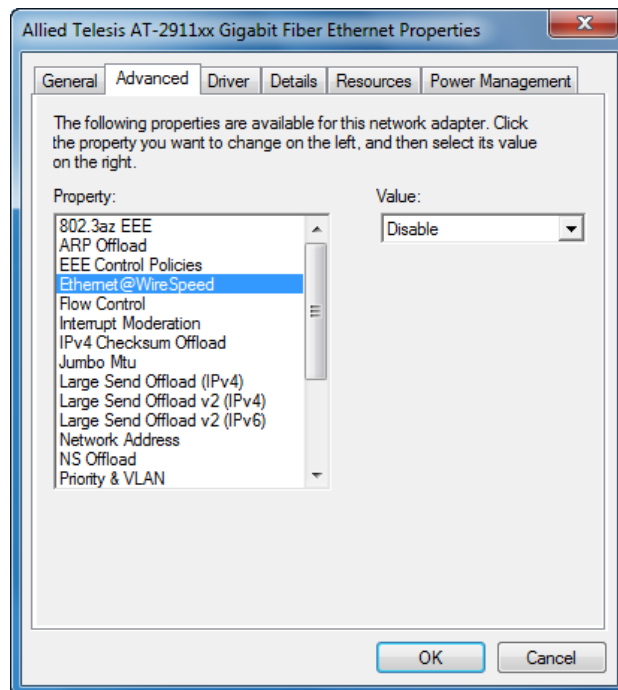


Figure 21. Ethernet@WireSpeed Page

3. Select one of the following options:

- Disabled** — The adapter tries to establish a link at 1000 Mbps.

Note

For fiber connectors, the setting is always disabled.

- Enabled** — The adapter establishes a link at a lower speed when only two pairs of wires are available in the connected cable. This is the default setting for the AT-2911 series adapters with a twisted pair copper interface.

4. Click **OK**.

Flow Control

The Flow Control feature allows you to control the flow between the AT-2911 adapter and its link partner. You can enable or disable the adapter to process received PAUSE frames and transmit PAUSE frames.

To enable or disable the Flow Control feature, do the following:

1. Access the Advanced Properties.

See “Accessing Advanced Properties” on page 43.

2. Select **Flow Control** in the Property box.

The Flow Control page is displayed as shown in Figure 22.

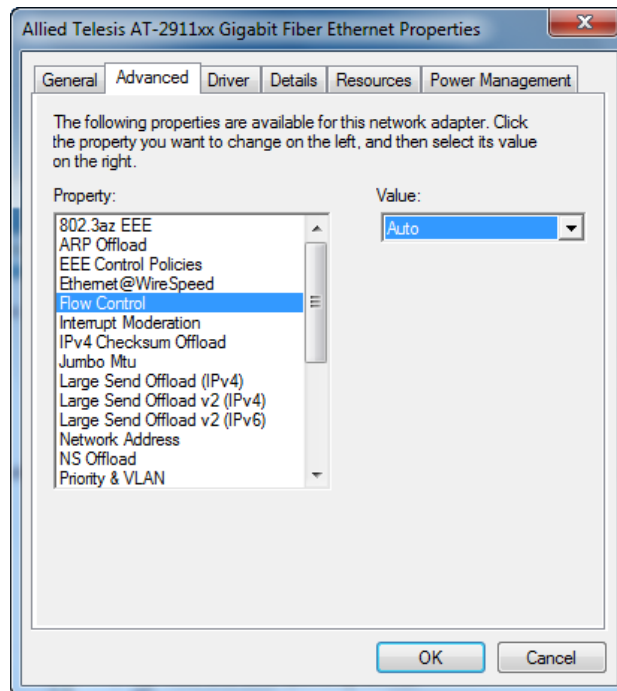


Figure 22. Flow Control Page

3. Select one of the following options:
 - Auto** — Receiving and transmitting PAUSE frames are optimized. This is the default setting.
 - Disabled** — The adapter ignores PAUSE frames.
 - Tx & Rx Enabled** — The adapter processes PAUSE frames when receiving and transmits PAUSE frames.
 - Rx Enabled** — The adapter processes PAUSE frames when receiving, but does not transmit PAUSE frame.
 - Tx Enabled** — The adapter transmits PAUSE frames, but ignores PAUSE frames when receiving.
4. Click **OK**.

Interrupt Moderation

The Interrupt Moderation feature allows you to limit the rate of interrupts to the CPU during packet transmission and packet reception. When this feature is enabled, interrupts are handled as a group so that the CPU utilization decreases; however, the latency may increase.

To enable or disable the Interrupt Moderation feature, do the following:

1. Access the Advanced Properties.
See “Accessing Advanced Properties” on page 43.
2. Select **Interrupt Moderation** in the Property box.

The Interrupt Moderation page is displayed as shown in Figure 23.

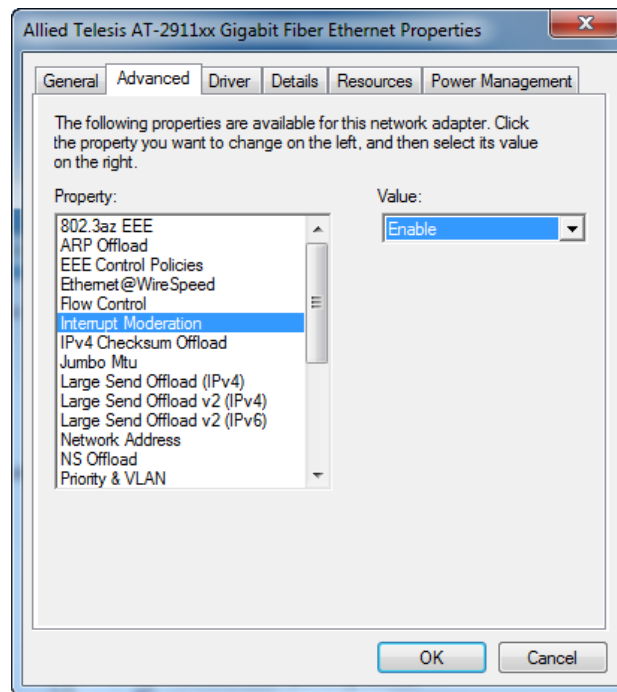


Figure 23. Interrupt Moderation Page

3. Select one of the following options:
 - Disabled** — The Interrupt Moderation feature is disabled.
 - Enabled** — The Interrupt Moderation feature is enabled. This is the default setting.
4. Click **OK**.

IPv4 Checksum Offload

The IPv4 Checksum Offload feature allows the adapter to verify the IPv4 checksum to enhance IPv4 receive and transmit performance and reduce CPU utilization.

To enable or disable the IPv4 Checksum Offload feature, do the following:

1. Access the Advanced Properties.

See “Accessing Advanced Properties” on page 43.
2. Select **IPv4 Checksum Offload** in the Property box.

The IPv4 Checksum Offload page is displayed as shown in Figure 24.

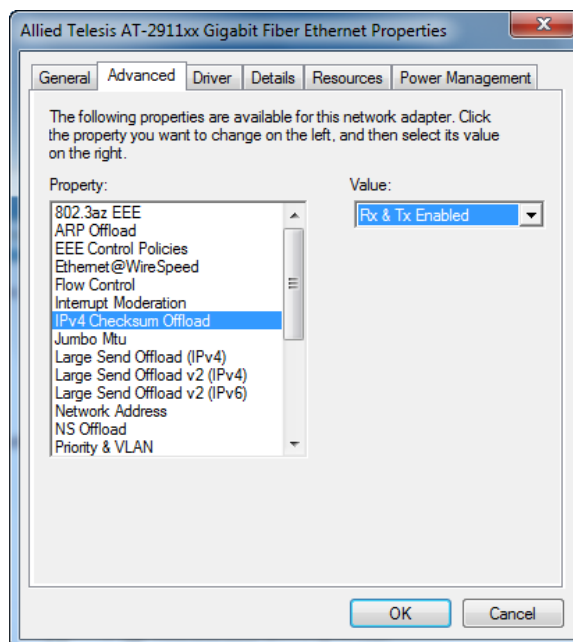


Figure 24. IPv4 Checksum Offload Page

3. Select one of the following options:
 - Rx & Tx Enabled** — The adapter verifies IPv4 Checksum for both receiving and transmitting packets. This is the default setting.
 - Disabled** — The CPU verifies IPv4 checksum.
 - Rx Enabled** — The adapter verifies IPv4 Checksum only for receiving packets.
 - Tx Enabled** — The adapter verifies IPv4 Checksum only for transmitting packets.
4. Click **OK**.

Jumbo Mtu

The Jumbo Mtu (Maximum transmission unit) feature allows you to specify the size of the Ethernet frame that the adapter supports. The network performance usually improves when the larger frame size is specified; however, the network must be capable of supporting the oversized Ethernet frames.

To change the Jumbo Mtu setting, do the following:

1. Access the Advanced Properties.

See “Accessing Advanced Properties” on page 43.

2. Select **Jumbo Mtu** in the Property box.

The Jumbo Mtu page is displayed as shown in Figure 25.

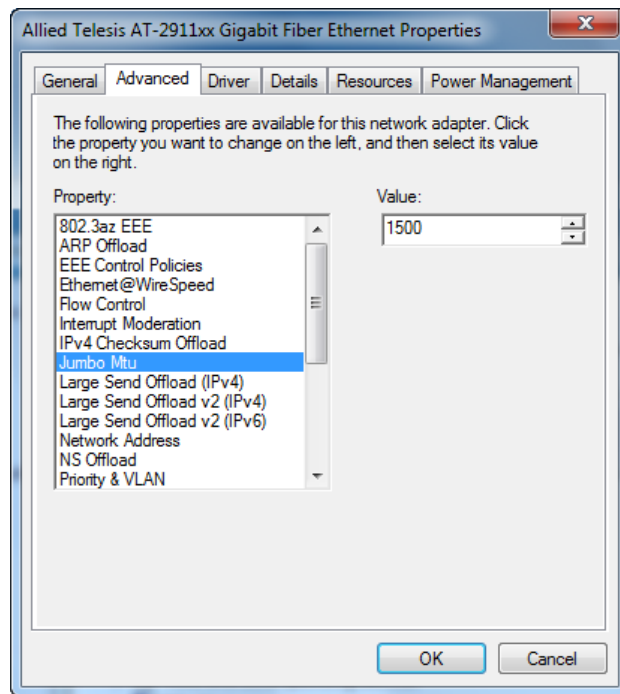


Figure 25. Jumbo Mtu Page

3. Specify the size of the frame in the Value box.

The range of the value is from 1,500 to 9,000. The default value is 1,500.

4. Click **OK**.

Large Send Offload (IPv4)

The Large Send Offload (IPv4) feature allows you to control the load of sending out large packets. When this feature is enabled, the AT-2911 adapter segments large packets and reduces the CPU load.

The Large Send Offload (IPv4) feature supports large packets up to 64kb. The Large Send Offload v2 (IPv4), which supports large packets up to 256kb, overrides the Large Send Offload (IPv4) feature if both features are enabled. For more information, see “Large Send Offload v2 (IPv4)” on page 58.

To enable or disable the Large Send Offload (IPv4) feature, do the following:

1. Access the Advanced Properties.
See “Accessing Advanced Properties” on page 43.
2. Select **Large Send Offload (IPv4)** in the Property box.

The Large Send Offload (IPv4) page is displayed as shown in Figure 26.

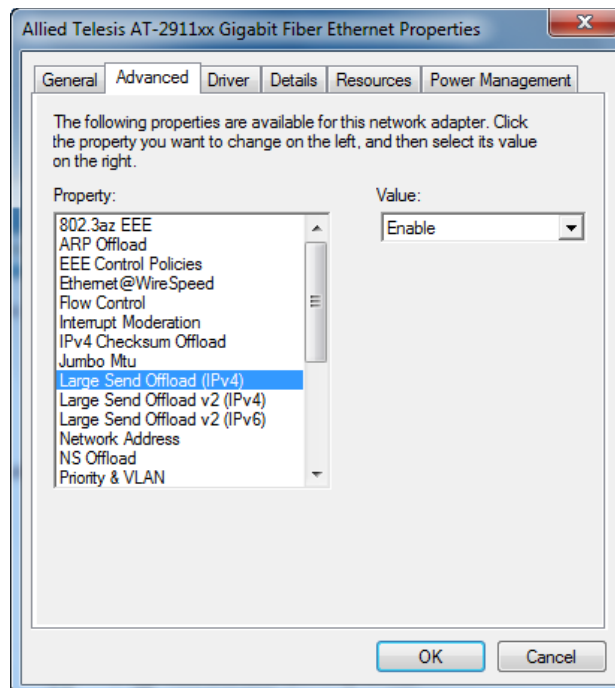


Figure 26. Large Send Offload (IPv4) Page

3. Select one of the following options:
 - Disabled** — This feature is disabled.
 - Enabled** — The adapter segments large packets up to 64kb for IPv4 traffic before sending them out. This is the default setting.
4. Click **OK**.

Large Send Offload v2 (IPv4)

The Large Send Offload v2 (IPv4) feature allows you to control the load of sending out large packets. When this feature is enabled, the AT-2911 adapter segments large packets for IPv4 traffic and reduces the CPU load.

This feature, which supports large packets up to 256kb, overrides the Large Send Offload (IPv4) feature if both features are enabled.

To enable or disable the Large Send Offload v2 (IPv4) feature, do the following:

1. Access the Advanced Properties.
See “Accessing Advanced Properties” on page 43.
2. Select **Large Send Offload v2 (IPv4)** in the Property box.

The Large Send Offload v2 (IPv4) page is displayed as shown in Figure 27.

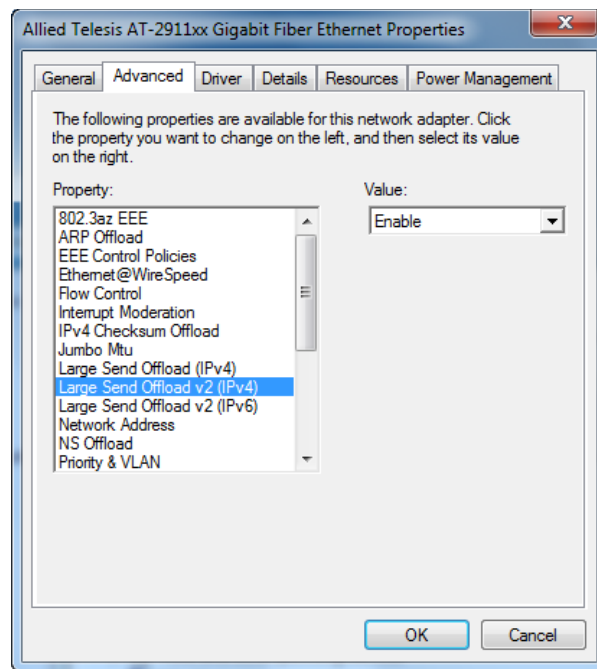


Figure 27. Large Send Offload v2 (IPv4) Page

3. Select one of the following options:
 - Disabled** — The feature is disabled.
 - Enabled** — The adapter segments large packets up to 256kb for IPv4 traffic before sending them out. This is the default setting.
4. Click **OK**.

Large Send Offload v2 (IPv6)

The Large Send Offload v2 (IPv6) feature allows you to control the load of sending out large packets. When this feature is enabled, the AT-2911 adapter segments large packets for IPv6 traffic and reduces the CPU load.

To enable or disable the Large Send Offload v2 (IPv6) feature, do the following:

1. Access the Advanced Properties.

See “Accessing Advanced Properties” on page 43.

2. Select **Large Send Offload v2 (IPv6)** in the Property box.

The Large Send Offload v2 (IPv6) page is displayed as shown in Figure 28.

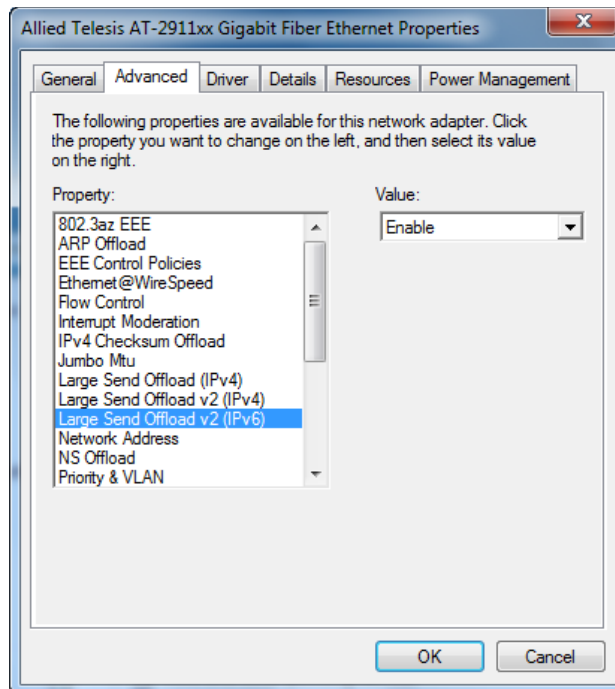


Figure 28. Large Send Offload (IPv6) Page

3. Select one of the following options:

- Disabled** — The adapter does not segment packets for IPv6 traffic.
- Enabled** — The adapter segments large packets up to 256kb for IPv6 traffic before sending them out. This is the default setting.

4. Click **OK**.

Network Address

The Network Address allows you to replace the MAC address originally assigned to the adapter with a user-defined address. The user-defined address that you assign to the adapter is called a locally administered address.



Caution

A locally administered address overrides the original MAC address stored in the AT-2911 adapter hardware. When you change the MAC address, be sure to assign a unique MAC address. ⚠ E81

To assign or change the Network Address, do the following:

1. Access the Advanced Properties.

See “Accessing Advanced Properties” on page 43.

2. Select **Network Address** in the Property box.

The Network Address page is displayed as shown in Figure 29.

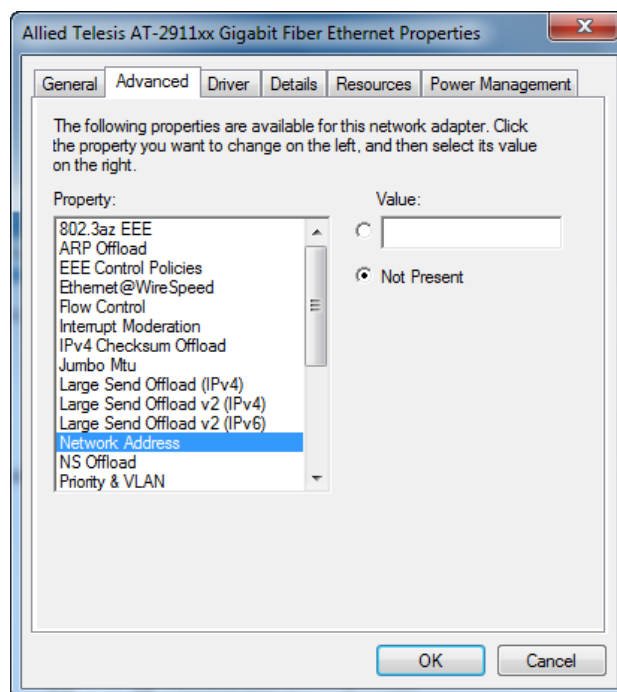


Figure 29. Network Address Page

3. In the **Value** text box, enter a locally administered address for the AT-2911 adapter.

By default, no network address is assigned.

Here are guidelines to assigning a locally administered address:

- The address must be unique.
 - The address consists of a 12-digit hexadecimal number, for example, "000C46005501."
 - The range is from 0000 0000 0001 to FFFF FFFF FFFD excluding multicast MAC addresses, which cannot be used. The multicast MAC address has the least significant bit of the most significant octet as 1.
4. Click **OK**.

NS Offload

The NS (Neighbor Solicitation) Offload feature, one of the network power management features, allows the adapter to respond to a Neighbor Solicitation request without waking up the computer.

To enable or disable the NS Offload feature, do the following:

1. Access the Advanced Properties.

See “Accessing Advanced Properties” on page 43.

2. Select **NS Offload** in the Property box.

The NS Offload page is displayed as shown in Figure 30.

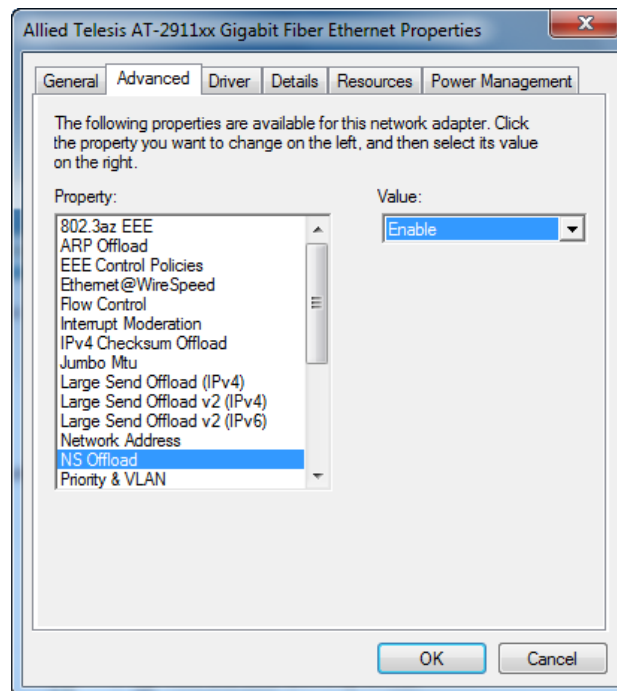


Figure 30. NS Offload Page

3. Select one of the following options:

- Disable** — The computer wakes up from sleep mode and responds to an NS request.
- Enable** — The adapter responds to a Neighbor Solicitation request without waking up the computer. This is the default setting.

4. Click **OK**.

Priority & VLAN

The Priority & VLAN feature allows you to control sending and receiving tagged frames of QoS and VLAN.

When the property is set to Priority & VLAN Enabled, the adapter sends and receives QoS and VLAN tagged frames; with Priority Enabled, the adapter sends and receives QoS tagged frames; with VLAN Enabled, the adapter sends and receives VLAN tagged frames. To assign a VLAN ID to the adapter, see “VLAN ID” on page 77.

To enable or disable the Priority & VLAN feature, do the following:

1. Access the Advanced Properties.

See “Accessing Advanced Properties” on page 43.

2. Select **Priority & VLAN** in the Property box.

The Priority & VLAN page is displayed as shown in Figure 31.

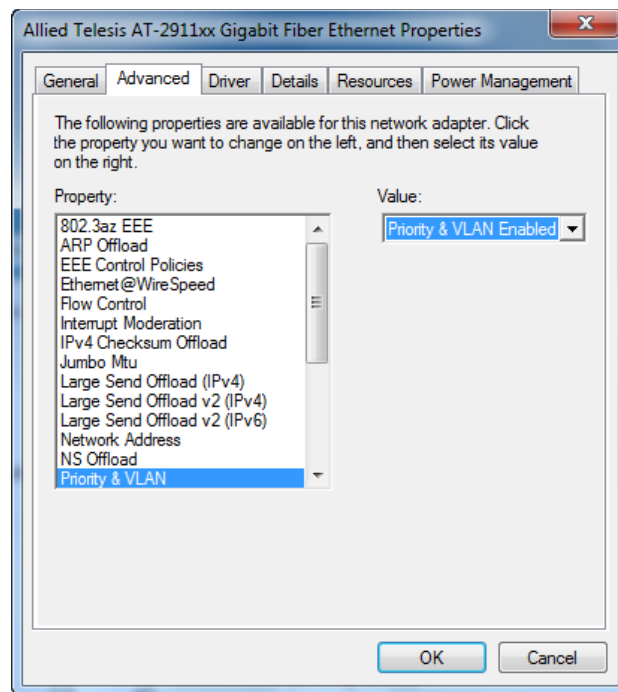


Figure 31. Priority & VLAN Page

3. Select one of the following options:
 - Priority & VLAN Enabled** — The adapter sends and receives QoS and VLAN tagged frames. This is the default setting.
 - Priority Enabled** — The adapter sends and receives QoS tagged frames.
 - VLAN Enabled** — The adapter sends and receives VLAN tagged frames.
4. Click **OK**.

Receive Buffers

The Receive Buffers property specifies the number of receive buffers allocated for the adapter. Increasing this value may enhance performance in receiving traffic, but consumes more system memory.

To change the Receive Buffers value, do the following:

1. Access the Advanced Properties.

See “Accessing Advanced Properties” on page 43.

2. Select **Receive Buffers** in the Property box.

The Receive Buffers page is displayed as shown in Figure 32.

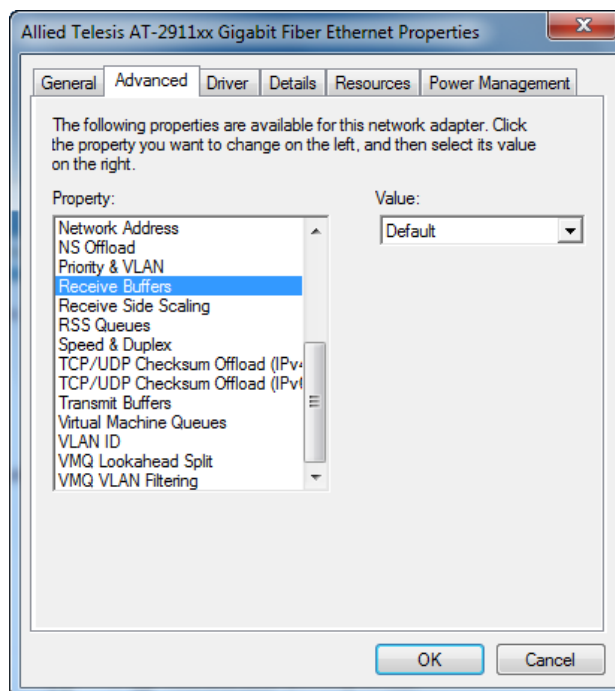


Figure 32. Receive Buffers Page

3. Select one of the following options:
 - Default** — Specifies the default number of receive buffers allocated to the adapter. This is the default setting.
 - Maximum** — Specifies the maximum number of receive buffers allocated to the adapter.
 - Minimum** — Specifies the minimum number of receive buffers allocated to the adapter.
4. Click **OK**.

Receive Side Scaling

The Receive Side Scaling (RSS) feature allows the adapter to efficiently distribute receive processing across multiple CPU and to prevent from overloading a single CPU. To make this feature effective, the computer must have multiple CPUs in a multiprocessor system.

To enable or disable the Receive Side Scaling feature, do the following:

1. Access the Advanced Properties.
See “Accessing Advanced Properties” on page 43.
2. Select **Receive Side Scaling** in the Property box.

The Receive Side Scaling page is displayed as shown in Figure 33.

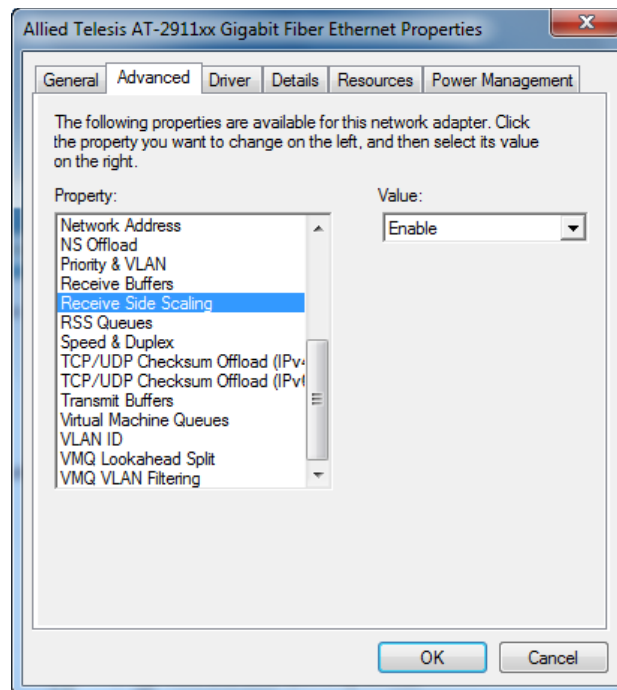


Figure 33. Receive Side Scaling Page

3. Select one of the following options:
 - Enabled** — Receiving data is processed by multiple CPUs. This is the default setting.
 - Disabled** — Receiving data is processed by a single CPU.
4. Click **OK**.

RSS Queues

The RSS Queues feature allocates queue space between the adapter and processor, and allows you to specify the number of RSS queues that the adapter assigns receiving data to.

To Specify the RSS Queues value, do the following:

1. Access the Advanced Properties.
See “Accessing Advanced Properties” on page 43.
2. Select **RSS Queues** in the Property box.

The RSS Queues page is displayed as shown in Figure 34.

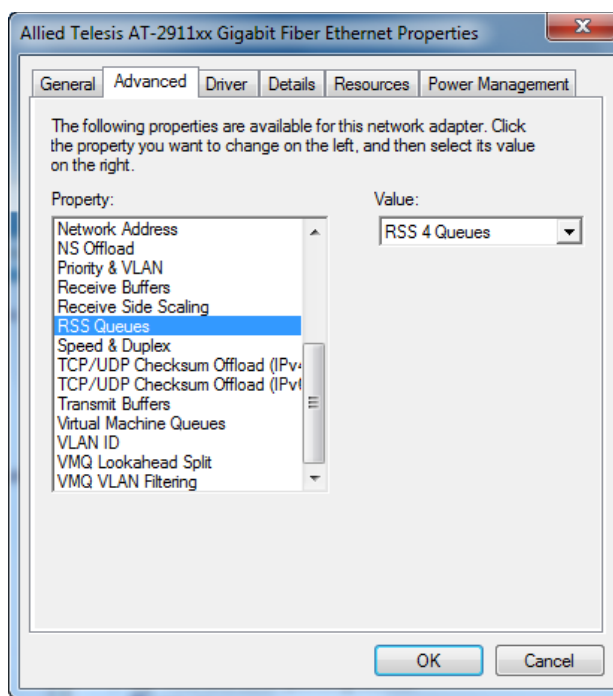


Figure 34. RSS Queues Page

3. Select one of the following options:

Note

The supported number of RSS queues and default setting depend on the adapter and operating system. You might not see all options listed below.

- RSS 4 Queues** — The system allocates four RSS queues.
 - RSS 1 Queue** — The system allocates one RSS queue.
 - RSS 2 Queues** — The system allocates two RSS queues.
4. Click **OK**.

Speed & Duplex

The Speed & Duplex feature sets the link speed and duplex mode of the adapter with a twisted pair copper interface.

Note

This feature is valid only for copper ports. For fiber connectors, the setting is always Auto.

To change the Speed & Duplex property, do the following:

1. Access the Advanced Properties.

See “Accessing Advanced Properties” on page 43.

2. Select **Speed & Duplex** in the Property box.

The Speed & Duplex page is displayed as shown in Figure 35.

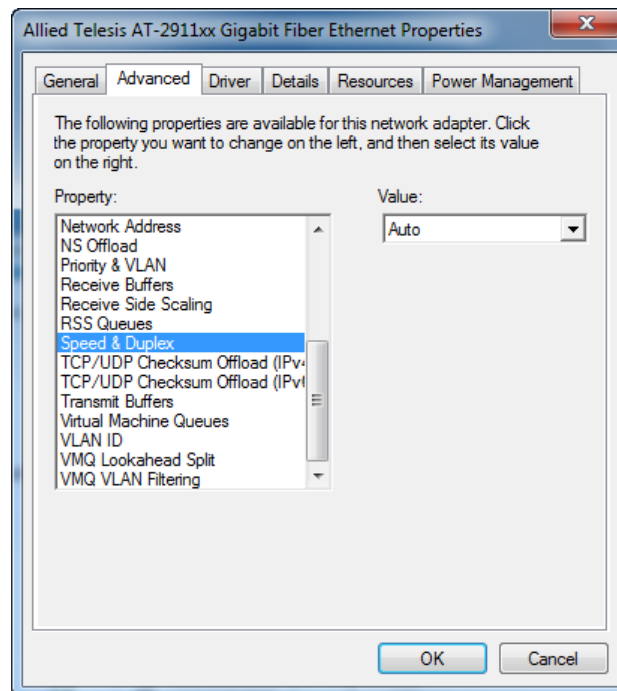


Figure 35. Speed & Duplex Page

3. Select one of the following options:

- Auto** — Auto-negotiation. This is the default setting.

Note

For fiber connectors, the setting is always Auto.

- 10 Mbps Half Duplex** — 10 Mbps speed in the half duplex mode.
- 10 Mbps Full Duplex** — 10 Mbps speed in the full duplex mode.
- 100 Mbps Half Duplex** — 100 Mbps speed in the half duplex mode.
- 100 Mbps Full Duplex** — 100 Mbps speed in the full duplex mode. This is the default setting.

4. Click **OK**.

TCP/UDP Checksum Offload (IPv4)

The TCP/UDP Checksum Offload (IPv4) function enables the adapter to compute the checksum of transmitting IPv4 packets and verify the checksum of receiving IPv4 packets, taking load off from the CPU.

To modify the TCP/UDP Checksum Offload (IPv4) setting, do the following:

1. Access the Device Manger on your operating system.
See “Accessing Advanced Properties” on page 43.
2. Select **TCP/UDP Checksum Offload (IPv4)** in the Property box.

The TCP/UDP Checksum Offload (IPv4) page is displayed as shown in Figure 36.

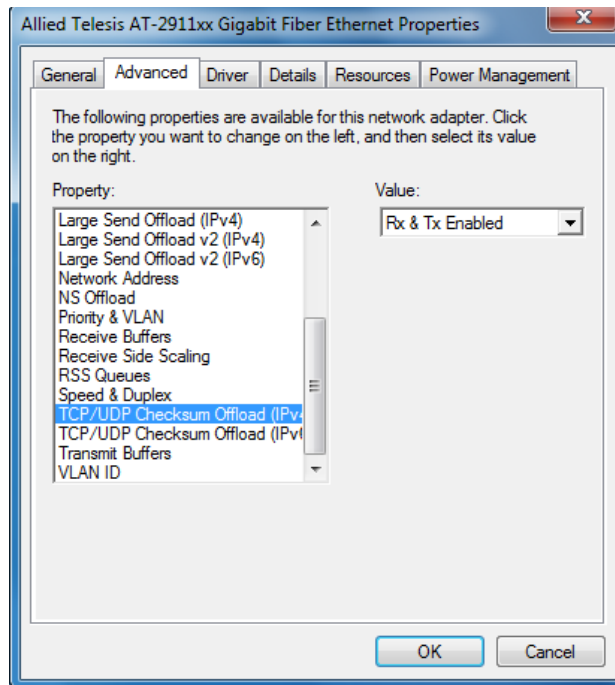


Figure 36. TCP/UDP Checksum Offload (IPv4) Page

3. Select one of the following options:
 - Rx & Tx Enabled** — Enables the TCP/UDP Checksum Offload (IPv4) function for both receiving and transmitting IPv4 packets. This is the default setting.
 - Rx Enabled** — Enables the TCP/UDP Checksum Offload (IPv4) function only for receiving IPv4 packets.
 - Tx Enabled** — Enables the TCP/UDP Checksum Offload (IPv4) function only for transmitting IPv4 packets.
4. Click **OK**.

TCP/UDP Checksum Offload (IPv6)

The TCP/UDP Checksum Offload (IPv6) function enables the adapter to compute the checksum of transmitting IPv6 packets and verify the checksum of receiving IPv6 packets, taking load off from the CPU.

To enable or disable the TCP/UDP Checksum Offload (IPv6) feature, do the following:

1. Access the Device Manager on your operating system.
See “Accessing Advanced Properties” on page 43.
2. Select **TCP/UDP Checksum Offload (IPv6)** in the Property box.

The TCP/UDP Checksum Offload (IPv6) page is displayed as shown in Figure 37.

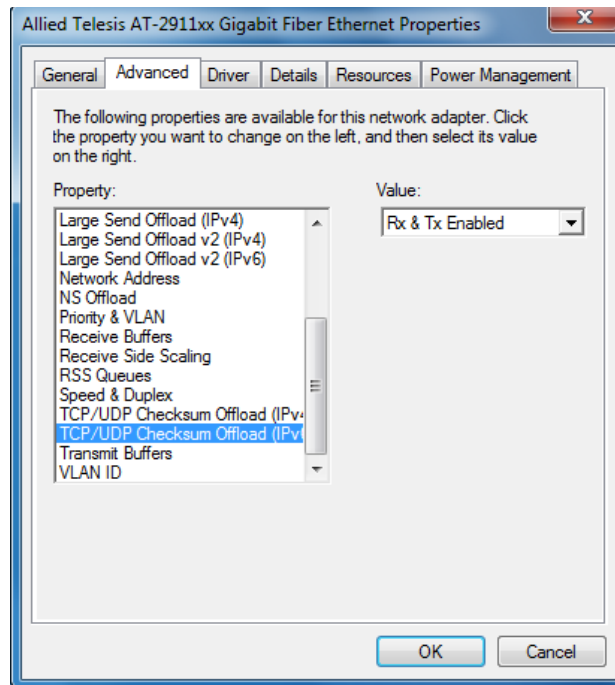


Figure 37. TCP/UDP Checksum Offload (IPv6) Page

3. Select one of the following options:
 - Rx & Tx Enabled** — Enables the TCP/UDP Checksum Offload (IPv6) function for both receiving and transmitting IPv6 packets. This is the default setting.
 - Rx Enabled** — Enables the TCP/UDP Checksum Offload (IPv6) function only for receiving IPv6 packets.
 - Tx Enabled** — Enables the TCP/UDP Checksum Offload (IPv6) function only for transmitting IPv6 packets.
4. Click **OK**.

Virtual Machine Queues

The Virtual Machine Queues feature allows you to control the load of sorting data packets. When this feature is enabled, the adapter sorts data packets to improve networking performance and reduce CPU utilization. This feature applies to host computers with Windows Server 2008 R2 or Windows 7 64 bit operating systems only. To make this feature effective, the host computer must be set in virtual environment.

To change the Virtual Machine Queues, do the following:

1. Access the Advanced Properties.
See “Accessing Advanced Properties” on page 43.
2. Select **Virtual Machine Queues** in the Property box.

The Virtual Machine Queues page is displayed as shown in Figure 38.

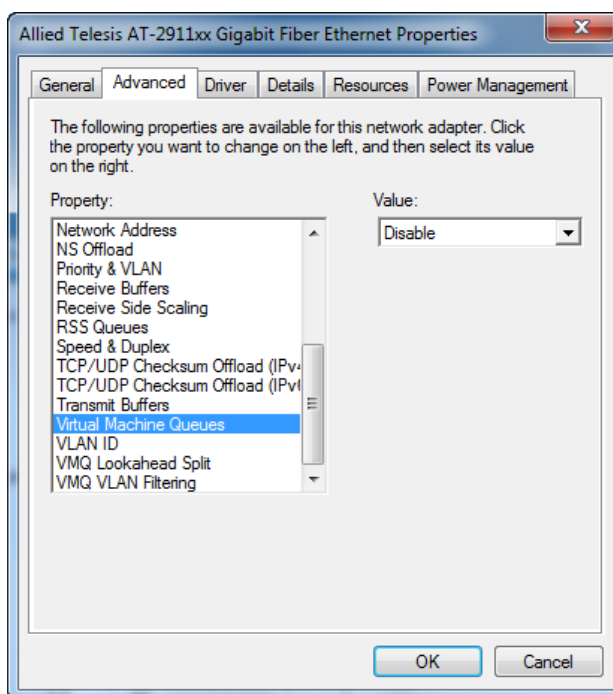


Figure 38. Virtual Machine Queues Page

3. Select one of the following options:
 - Disable** — The feature is disabled. This is the default setting.
 - Enable** — The adapter sorts data packets.
4. Click **OK**.

VLAN ID

The VLAN ID property allows you to specify a VLAN ID on your network to the adapter. The adapter adds the value of the VLAN ID to a frame in the VLAN tag before transmitting the frame.

To change the VLAN ID value, do the following:

1. Access the Advanced Properties.

See “Accessing Advanced Properties” on page 43.

2. Select **VLAN ID** in the Property box.

The VLAN ID page is displayed as shown in Figure 39.

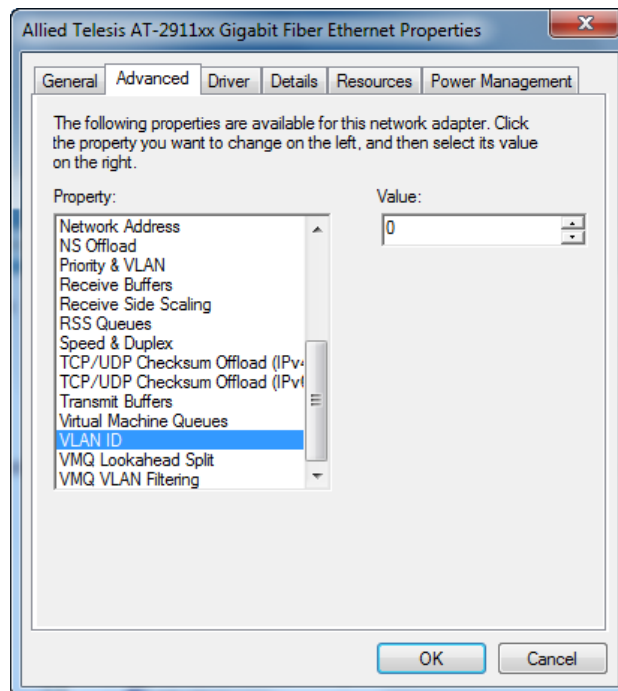


Figure 39. VLAN ID Page

3. Specify an VLAN ID in the Value box.

The range of the value is from 0 to 4094. The default value is 0.

4. Click **OK**.

VMQ Lookahead Split

The VMQ Lookahead Split feature allows the adapter to split receive buffers into two separate buffers. This feature applies to host computers with Windows Server 2008 R2 or Windows 7 64 bit operating systems only. To make this feature effective, the host computer must be set in virtual environment.

To enable or disable the VMQ Lookahead Split feature, do the following:

1. Access the Advanced Properties.
See “Accessing Advanced Properties” on page 43.
2. Select **VMQ Lookahead Split** in the Property box.

The VMQ Lookahead Split page is displayed as shown in Figure 40.

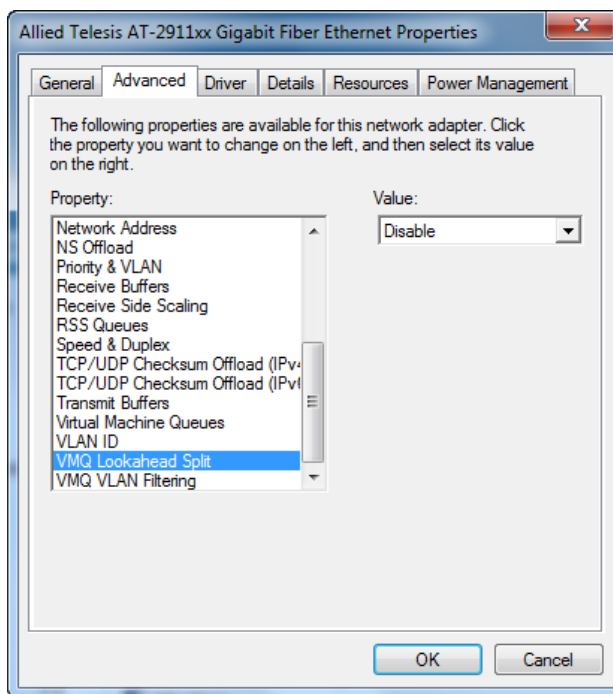


Figure 40. VMQ Lookahead Split Page

3. Select one of the following options:
 - Disable** — The feature is disabled. This is the default setting.
 - Enable** — The adapter uses two separate lookahead receive buffers.
4. Click **OK**.

VMQ VLAN Filtering

The VMQ VLAN Filtering feature allows the adapter to filter data packets using the VLAN ID in the media access control (MAC) header to improve networking performance and reduce CPU utilization. This feature applies to host computers with Windows Server 2008 R2 or Windows 7 64 bit operating systems only. To make this feature effective, the host computer must be set in virtual environment.

To enable or disable the VMQ VLAN Filtering feature, do the following:

1. Access the Advanced Properties.

See “Accessing Advanced Properties” on page 43.

2. Select **VMQ VLAN Filtering** in the Property box.

The VMQ VLAN Filtering page is displayed as shown in Figure 41.

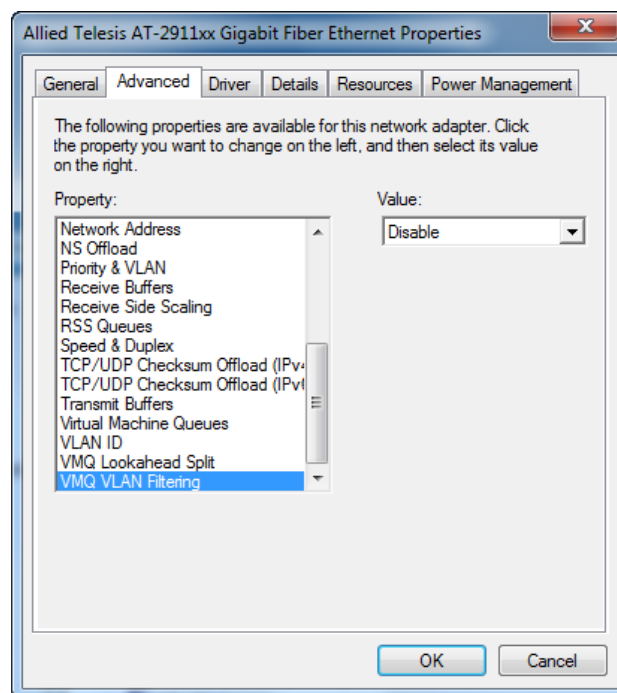


Figure 41. VMQ VLAN Filtering Page

3. Select one of the following options:

- Disable** — The feature is disabled. This is the default setting.
- Enable** — The adapter filters data packets using the VLAN ID in the MAC header.

4. Click **OK**.

Chapter 4

Installing the Driver Software

This chapter describes how to install driver software for the AT-2911 adapter onto your operating system. It contains the following topics:

- ❑ “Overview” on page 82
- ❑ “Downloading the Driver Software” on page 83
- ❑ “Accessing the Device Manager” on page 85
- ❑ “Installing the Driver Software” on page 89
- ❑ “Updating the Driver Software” on page 97

Overview

To install or update the driver software onto the Windows systems, you must follow the steps below:

- ❑ “Downloading the Driver Software” on page 83
- ❑ “Accessing the Device Manager” on page 85
- ❑ “Installing the Driver Software” on page 89

Or

- ❑ “Updating the Driver Software” on page 97

Guidelines

Here are the guidelines for installing and updating the driver software on your operating system:

- ❑ To install or update the driver software, you must have administrative privileges.
- ❑ When you install the AT-2911 adapter on your computer and start the system, the Windows system detects a new adapter and may install a default driver. To update the driver software for the AT-2911 adapter, follow the instructions described in “Downloading the Driver Software” on page 83 and “Updating the Driver Software” on page 97.
- ❑ When you install the AT-2911 adapter on your computer and start the system, the Windows system may install the native Broadcom driver if your computer has an onboard Broadcom network interface. To update the driver for the AT-2911 adapter, follow the instructions described in “Downloading the Driver Software” on page 83 and “Updating the Driver Software” on page 97.

Installing Linux Driver

Allied Telesis supports Linux systems for the AT-2911 series adapter. To install driver software, see the *Broadcom NetXtreme® 57XX User Guide*. To view this document, see “Broadcom Documentation” on page 26.

Downloading the Driver Software

The AT-2911 series adapter is not shipped with a software driver CD. You must download driver software from the Allied Telesis website.

To download driver software, do the following:

1. Open a web browser, such as Internet Explorer or FireFox, on your system and enter the following:

<http://www.alliedtelesis.com/support/software>

2. The Allied Telesis Software Download page is displayed.
3. Enter "2911" in the search box and press the enter key.

Figure 42 shows an example of the search result.

The screenshot shows the Allied Telesis website's 'Software Downloads' page. The header includes the Allied Telesis logo, a '25th Anniversary' badge, and navigation links for Solutions, Products, Support, About, and Purchase. A search bar is located in the top right. The main content area is titled 'Software Downloads' and contains a search result for '2911'. The search results are displayed in a table with columns for Title, Size, and Date.

Title	Size	Date
Driver: AT-2911SX, Windows 7, Vista, Windows Server 2008 (32 bit) (Version 14.8.0.5)	178.60 KB	19 Jan 2012
Driver: AT-2911SX, Windows 7, Vista, Windows Server 2008, Windows Server 2008 R2 (64 bit) (Version 14.8.0.5)	201.05 KB	19 Jan 2012
Driver: AT-2911SX, Windows XP (32 bit) (Version 14.8.0.5)	120.51 KB	19 Jan 2012
Driver: AT-2911SX, Windows XP (64 bit) (Version 14.8.0.5)	154.04 KB	19 Jan 2012

Figure 42. Software Downloads Search Result Example

4. Select the driver for your adapter model and operating system.
5. Save the zip folder onto your system.
6. Right-click the zip folder and select **Extract All**.

A window as shown in Figure 43 pops up and prompts you to specify the location of a folder that you want to place unzipped files in.

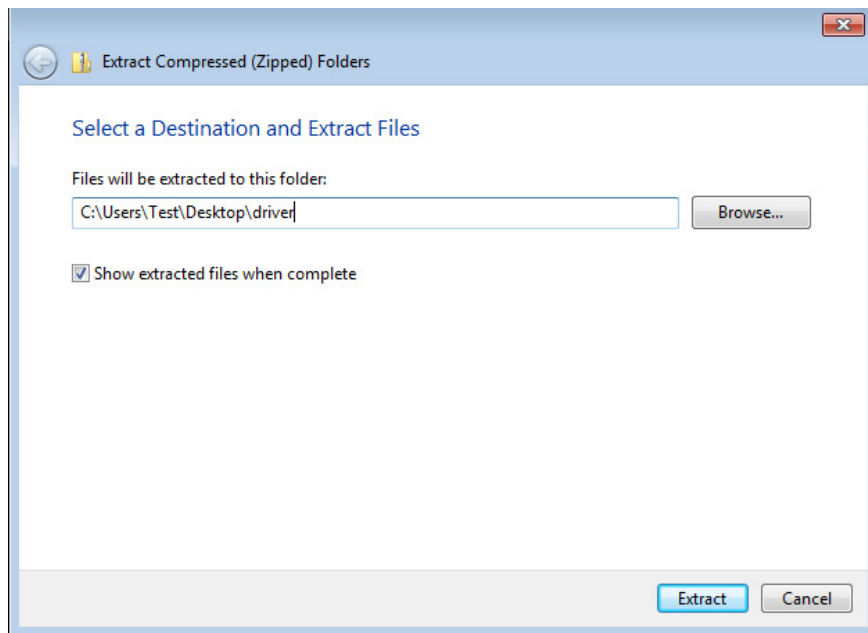


Figure 43. Specifying the Folder for Unzipped Files

7. Specify the location of the folder and click **Extract**.
8. Record the location of the folder.

Accessing the Device Manager

When you install or update the driver software for AT-2911 series adapter, you must first access Device Manager.

The procedures for accessing Device Manager are slightly different among Windows Server 2008 R2, Server 2008, Vista, 7, Server 2003, and XP. To access Device Manager on your operating system, follow one of the procedures below:

- ❑ “Accessing Device Manager on Windows Server 2008 R2, Server 2008, Vista, or 7,” next
- ❑ “Accessing Device Manager on Windows Server 2003 and XP” on page 86

Accessing Device Manager on Windows Server 2008 R2, Server 2008, Vista, or 7

To access Device Manager on Windows Server 2008 R2, Windows Server 2008, Windows Vista, or Windows 7, do the following:

1. Right-click the **Computer** icon on the desktop and select **Properties**.

The System window is opened as shown in Figure 44.

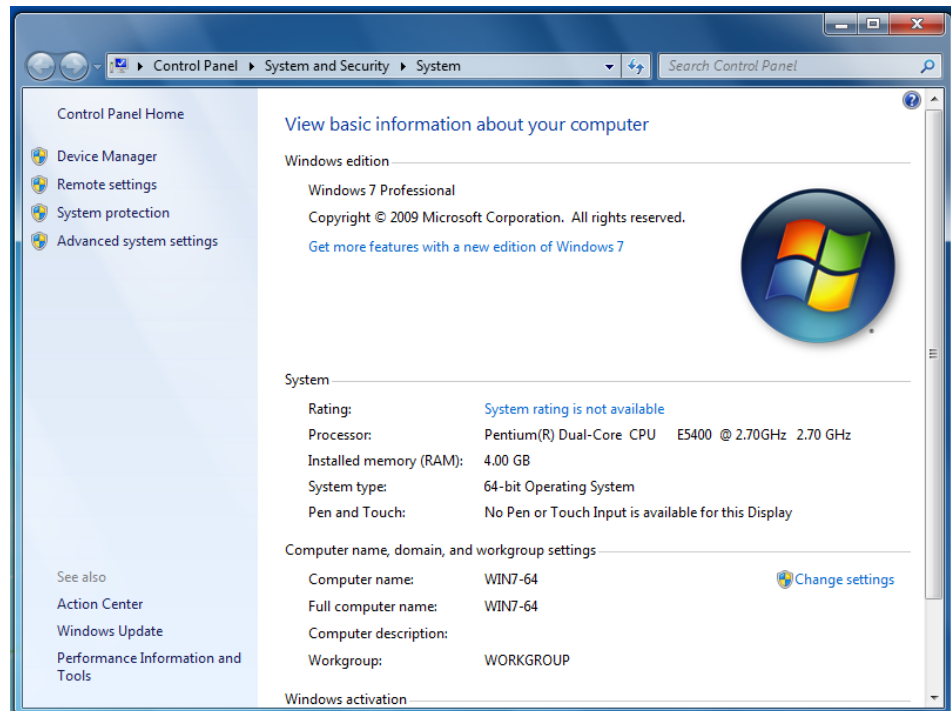


Figure 44. System Window on Windows Server 2008 R2, Server 2008, Vista, and 7

2. Click **Device Manager** on the left side bar.

The Device Manager window opens. Your AT-2911 series adapter is detected as Ethernet Controller as shown in Figure 45.

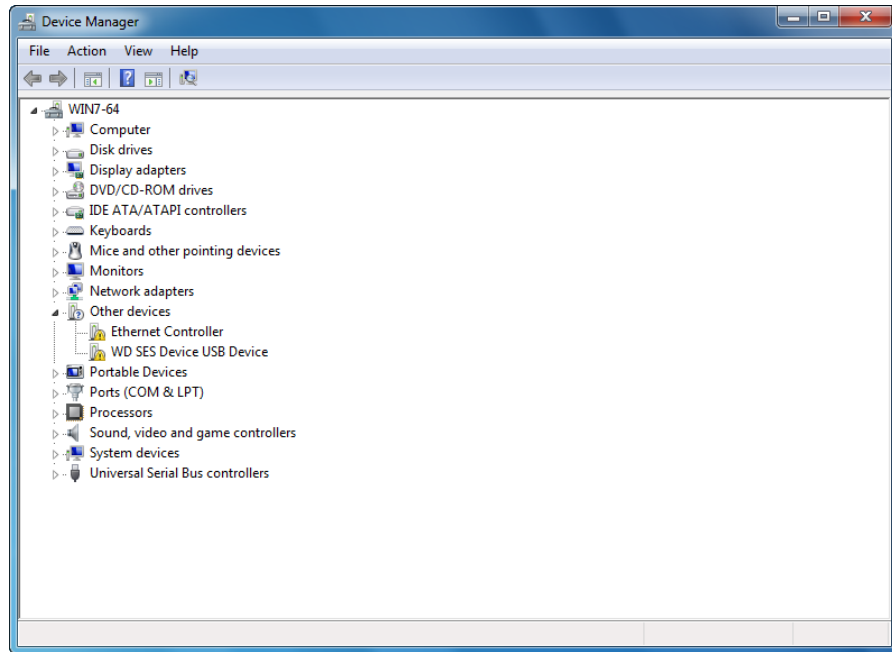


Figure 45. Device Manager Window on Windows Server 2008 R2, Sever 2008, Vista, and 7

Accessing Device Manager on Windows Server 2003 and XP

To access Device Manager on Windows Server 2003 or Windows XP, do the following:

1. Right-click the **My Computer** icon on the desktop and select **Properties**.

The System Properties window is opened as shown in Figure 46.

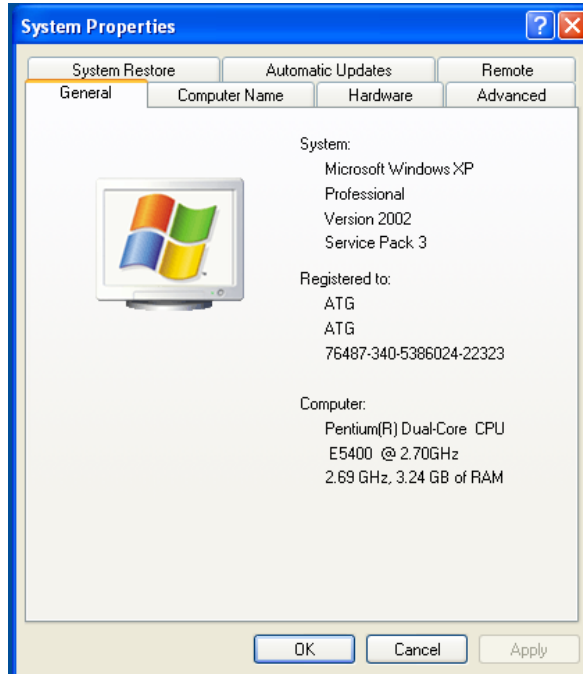


Figure 46. System Properties Window on Windows Server 2003 and XP

2. Select the **Hardware** Tab.

The Hardware page is shown in Figure 47.

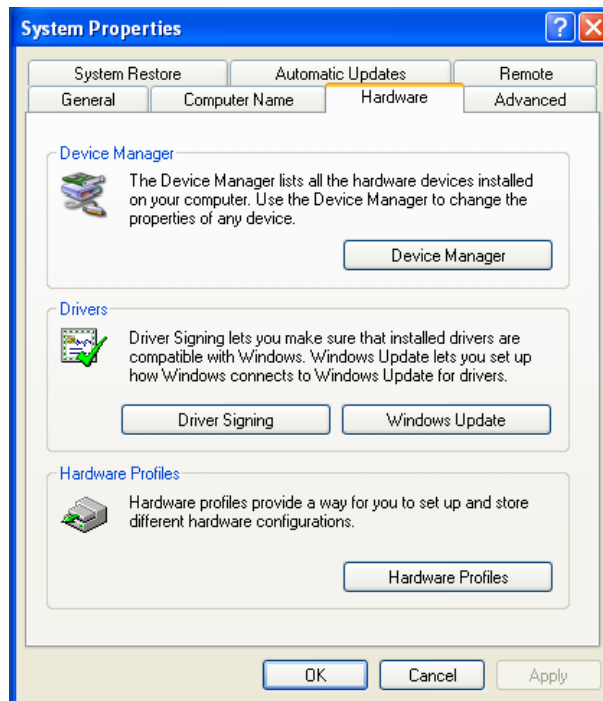


Figure 47. Hardware Page on Windows Server 2003 and XP

3. Click **Device Manager**.

The Device Manager window opens as shown in Figure 48.

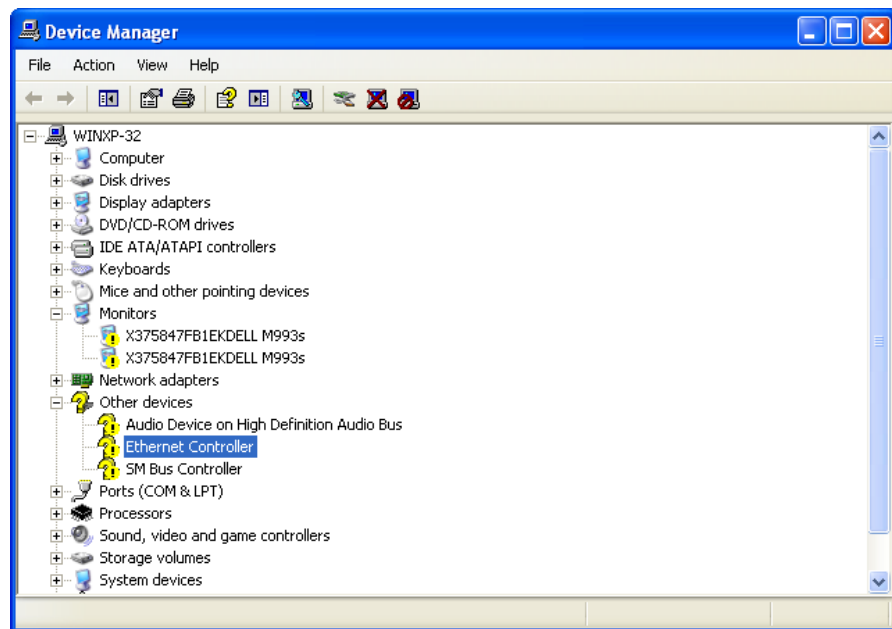


Figure 48. Device Manager Window on Windows Server 2003 and XP

Installing the Driver Software

Once you physically install the AT-2911 series adapter, the system detects the new hardware and creates an entry in Device Manger when the Windows operating system first boots up. Shortly after you log in, you need to install the driver software for your adapter.

Note

To install the driver software, you must have administrative privileges.

The procedures for installing the driver software are slightly different among Windows Server 2008 R2, Server 2008, Vista, 7, Server 2003, and XP. To install the driver software on your system, follow one of the procedures below:

- ❑ “Installing the Driver Software on Windows Server 2008 R2, Server 2008, Vista, or 7,” next
- ❑ “Installing the Driver Software on Windows Server 2003 and XP” on page 92

Installing the Driver Software on Windows Server 2008 R2, Server 2008, Vista, or 7

To install the driver software on Windows Server 2008 R2, Windows Server 2008, Windows Vista, or Windows 7, do the following:

1. Access Device Manager. see “Accessing Device Manager on Windows Server 2008 R2, Server 2008, Vista, or 7” on page 85.
2. In the Device Manager window, right-click **Ethernet Controller**.

The shortcut menu appears as shown in Figure 49.

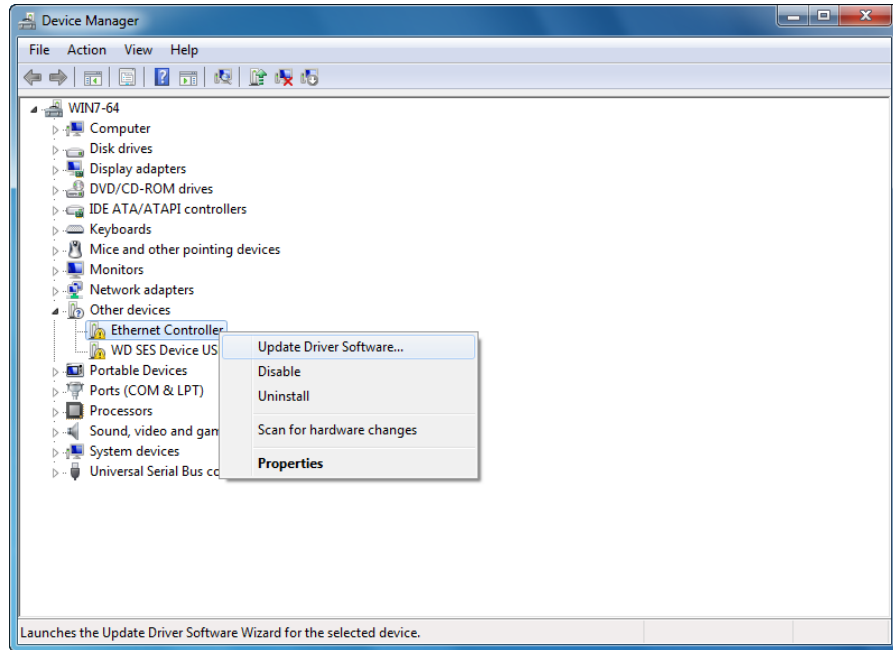


Figure 49. Ethernet Controller on Windows Server 2008 R2, Server 2008, Vista, and 7

3. Select **Update Driver Software**.

The Update Driver Software window pops up as shown in Figure 50.

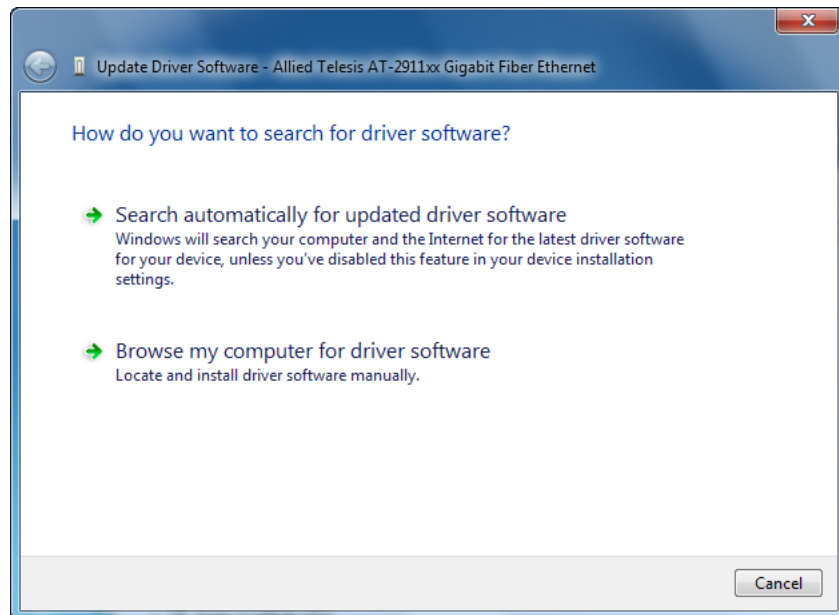


Figure 50. Update Driver Software Window on Windows Server 2008 R2, Server 2008, Vista, and 7

4. Select **Browse my computer for driver software**.

The Update Device Software window prompts you to enter the location of the driver folder as shown in Figure 51.

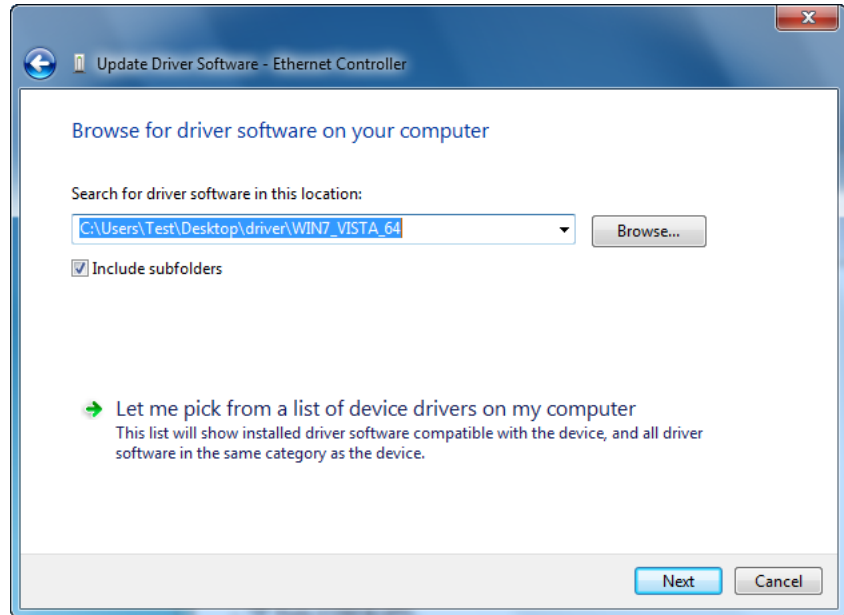


Figure 51. Update Device Software Window on Windows Server 2008 R2, Server 2008, Vista, and 7

5. Specify the location of the driver software. See “Downloading the Driver Software” on page 83 for details.

6. Click **Next**.

The confirmation message shown in Figure 52 appears when the driver software is successfully updated.

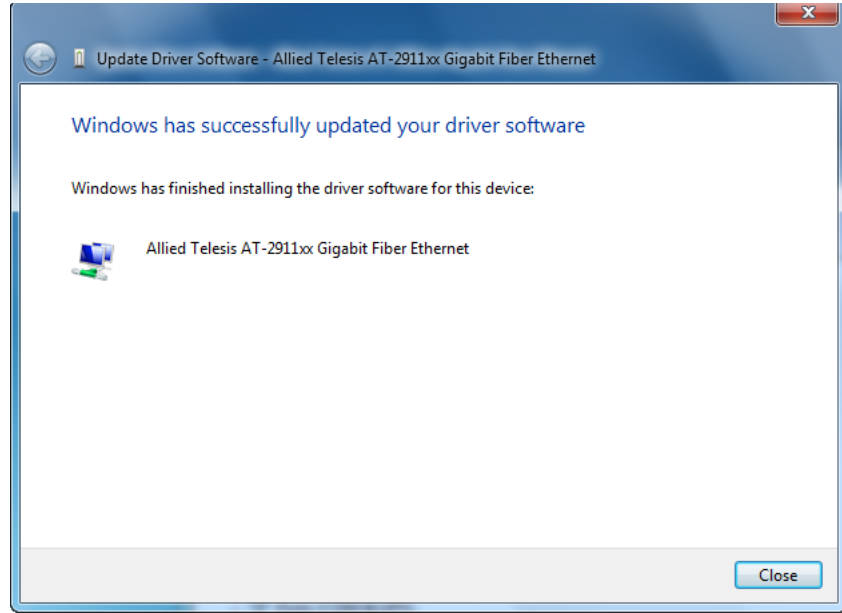


Figure 52. Update Device Software Window on Windows Server 2008 R2, Server 2008, Vista, and 7

7. Click **Close**.

Installing the Driver Software on Windows Server 2003 and XP

To install the driver software onto Windows Server 2003 and Windows XP, do the following:

1. Access Device Manger. See "Accessing Device Manager on Windows Server 2003 and XP" on page 86.
2. In the Device Manager window, right-click **Ethernet Controller**.

The shortcut menu appears as shown in Figure 53.

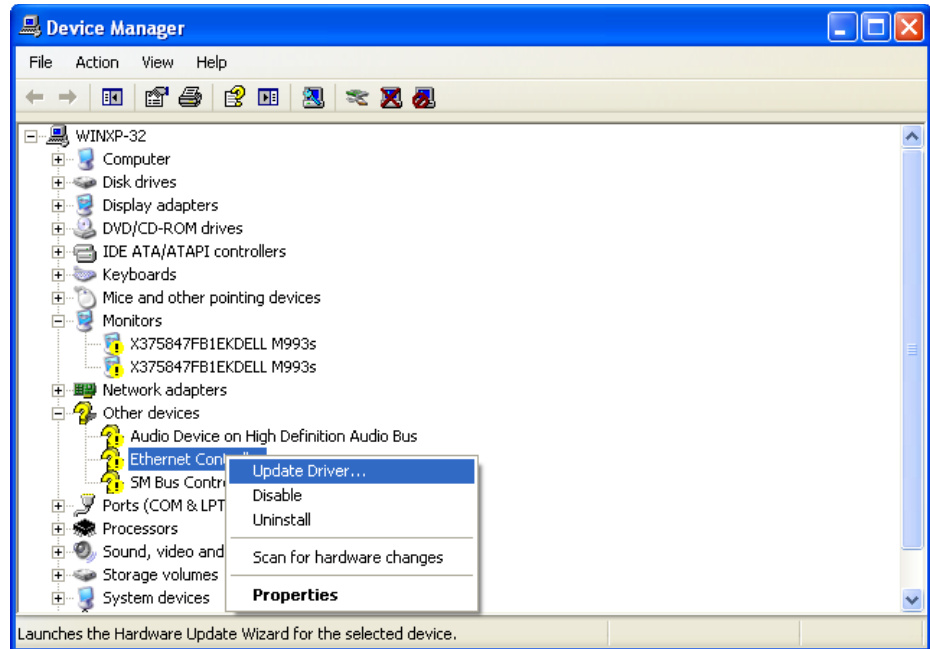


Figure 53. Ethernet Controller on Windows Server 2003 and XP

3. Select **Update Driver**.

The Hardware Update Wizard window pops up as shown in Figure 54.

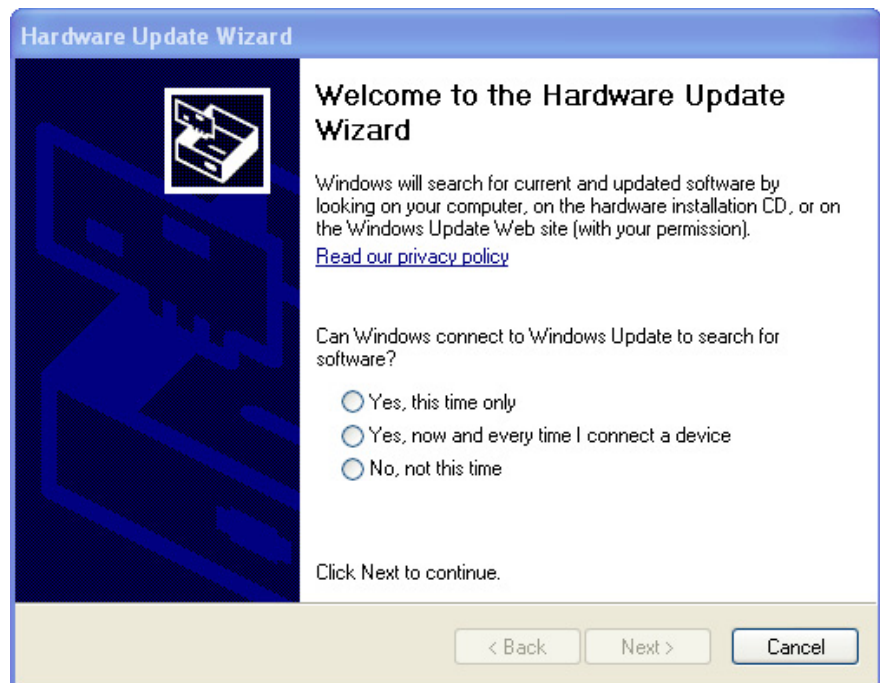


Figure 54. Hardware Update Wizard 1

4. Select **No, not this time**.

5. Click **Next**.

The Hardware Update Wizard prompts you to select one of two options as shown in Figure 55

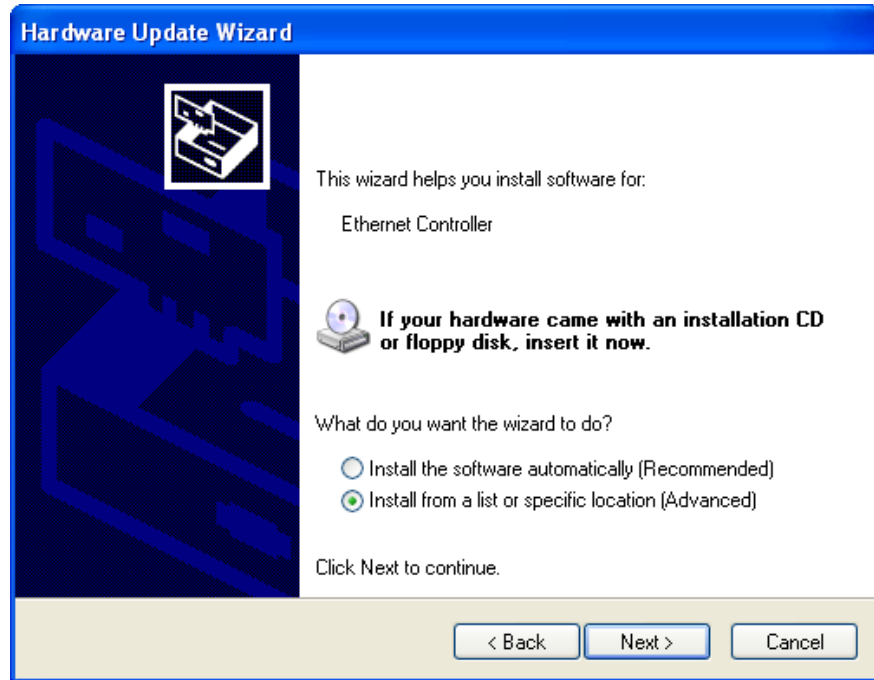


Figure 55. Hardware Update Wizard 2

6. Select **Install from a list or specific location (Advanced)**.
7. Click **Next**.

The Hardware Update Wizard prompts you to specify the location of your driver software as shown in Figure 56 on page 95.

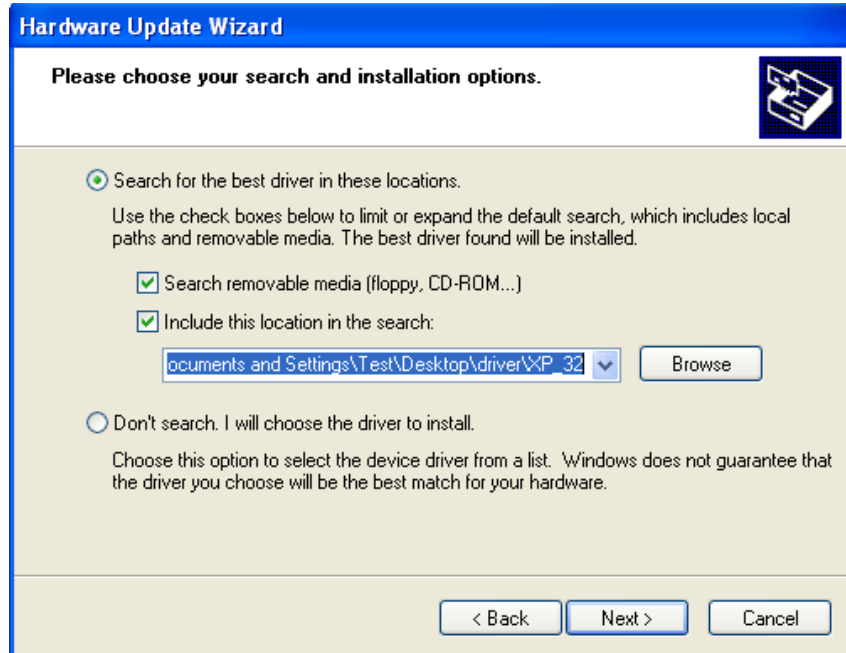


Figure 56. Hardware Update Wizard 3

8. Specify the location of the driver software.
9. Click **Next**.

The confirmation message is displayed as shown in Figure 57.

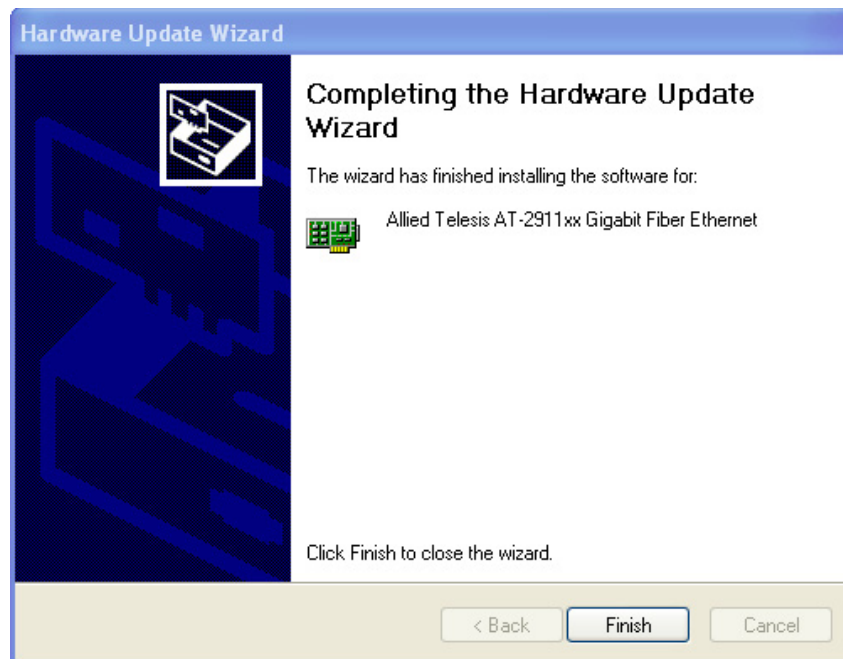


Figure 57. Hardware Update Wizard 4

10. Click **Finish**.

Updating the Driver Software

If your operating system detects an adapter and installs a default driver, you need to update the driver software with the driver that you downloaded from the Allied Telesis website. To obtain the latest version of the AT-2911 series adapter driver, see “Downloading the Driver Software” on page 83.

To update the driver software, you use the same procedure for installing the driver software for the first time. The only difference between updating and installing the driver software is the name of your adapter that Device Manager detects and lists.

Device Manager lists your adapter as Allied Telesis AT-2911xx Gigabit Ethernet once you installed the driver software. Before you installed the driver software, Device Manager does not know the name and lists your adapter as Ethernet Controller or as a Broadcom device.

The procedures for installing the driver software are slightly different among Windows Server 2008 R2, Server 2008, Vista, 7, Server 2003, and XP. To install the driver software on your system, follow one of the procedures below:

- “Updating the Driver on Windows Server 2008 R2, Server 2008, Vista, or 7,” next
- “Updating the Driver on Windows Server 2003 and XP” on page 98

Updating the Driver on Windows Server 2008 R2, Server 2008, Vista, or 7

To update the driver software for your AT-2911 series adapter, perform the following procedure:

1. Access the Device Manager. See “Accessing Device Manager on Windows Server 2008 R2, Server 2008, Vista, or 7” on page 85.
2. In the Device Manager window, right-click the device you wish to update. It may be listed as Allied Telesis AT-2911xx **Gigabit Fiber Ethernet** or as a Broadcom Device.

The shortcut menu appears as shown in Figure 58.

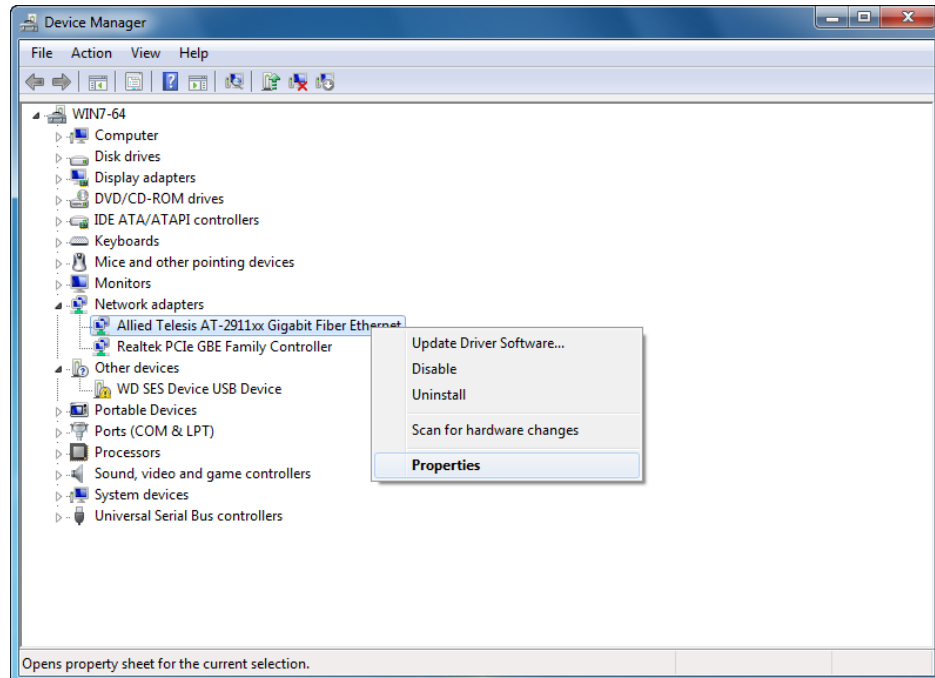


Figure 58. Device Manager with an Expanded List on Windows Server 2008 R2, Server 2008, Vista and 7

3. Select **Update Driver Software**.

The Update Driver Software window pops up as shown in Figure 50 on page 90.

4. Select **Browse my computer for driver software**.

The Update Device Software window prompts you to enter the location of the driver folder as shown in Figure 51 on page 91.

5. Specify the location of the driver software.

6. Click **Next**.

The confirmation message appears when the driver software is successfully updated. See Figure 52 on page 92.

7. Click **Close**.

Updating the Driver on Windows Server 2003 and XP

To install the driver software for the AT-2911 adapter onto the Windows Server 2003 and Windows XP, do the following:

1. Access Device Manager. See “Accessing Device Manager on Windows Server 2003 and XP” on page 86.

- In the Device Manager window, right-click the device you wish to update. It may be listed as Allied Telesis AT-2911xx **Gigabit Fiber Ethernet** or as a Broadcom Device.

The shortcut menu appears as shown in Figure 59.

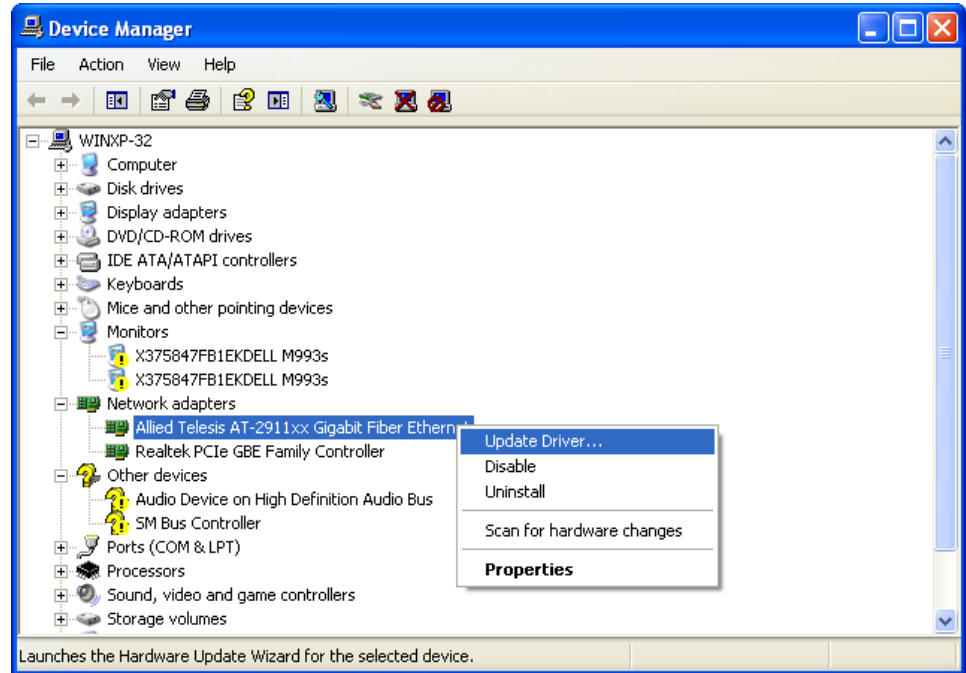


Figure 59. Network Adapters on Windows Server 2003 & XP

- Select **Update Driver**.

The Hardware Update Wizard window pops up as shown in Figure 54 on page 93.

- Select **No, not this time**.
- Click **Next**.

The Hardware Update Wizard prompts you to select one of two options as shown in Figure 55 on page 94.

- Select **Install from a list or specific location (Advanced)**.
- Click **Next**.

The Hardware Update Wizard prompts you to specify the location of your driver software as shown in Figure 56 on page 95.

- Specify the location of the driver software that you downloaded from Allied Telesis website.

9. Click **Next**.

The confirmation message is displayed as shown in Figure 57 on page 95.

10. Click **Finish**.

Chapter 5

Uninstalling the Driver Software

This chapter describes how to uninstall the driver software for the AT-2911 adapter.

This chapter contains the following topics:

- ❑ “Overview” on page 102
- ❑ “Uninstalling the Driver Software” on page 103

Overview

When you no longer use the AT-2911 series adapter for your computer, you may want to uninstall the driver software from your operating system.

Guidelines Here are the guidelines to uninstalling the driver software from your system:

- ❑ You must have Administrator privileges to remove the driver software.
- ❑ Before uninstalling the Allied Telesis device, capture all of the Advanced Property settings for later use. The properties are lost during the uninstall process.

Uninstalling the Driver Software

To uninstall the driver software from your operating system, do the following:

1. Start your Windows operating system and log in.
2. Access the Device Manager.

See “Accessing the Device Manager” on page 85.

3. In the Device Manager window, click the ▸ next to the Network Adapters folder.

Note

For the Windows XP operating systems, click the + next to the Network Adapters folder to expand the Network Adapter folder.

The selection expands to show the list of installed network adapter cards.

4. Right-click Allied Telesis AT-2911xx **Gigabit Fiber Ethernet**.

The shortcut menu appears. See Figure 58 on page 98.

5. Select **Uninstall**.

The Confirm Device Uninstall window pops up as shown in Figure 60.



Figure 60. Confirm Device Uninstall Window

6. Check the check box if you want to remove the driver software for your adapter.

Note

This option is available only for Windows Server 2008, Windows 7, and Windows Vista operating systems.

7. Click **OK** to complete the uninstall.

Chapter 6

Troubleshooting

This chapter describes troubleshooting procedures and contains the following sections:

- ❑ “Troubleshooting Checklist” on page 106
- ❑ “Checking a Port LED on the Adapter” on page 107
- ❑ “Testing Network Connectivity” on page 108
- ❑ “Software Problems and Solutions” on page 109

Troubleshooting Checklist

The following checklist provides recommended actions to resolve problems installing the Allied Telesis AT-2911 Series Gigabit Ethernet Network Adapters or running them in your system.

Note

Before opening the cabinet of your system for removing or inserting the adapter, review all precautions outlined under “Reviewing Safety Precautions” on page 30.

- Inspect all cables and connections. Verify that the cable connections between the adapter and the switch are attached properly. Make sure that the cable length and rating are compliant with the requirements listed in “Connecting the Network Cables” on page 39.
- Check the adapter installation by reviewing Chapter 2, “Installing the Hardware” on page 29.
- Make sure that the adapter board is properly seated in a PCIe slot. Check for specific hardware problems, such as obvious damage to board components or the PCIe edge connector.
- Check the configuration settings and change them if they are in conflict with another device.
- Make sure that your system is using the latest BIOS.
- Try inserting the adapter in another slot. If the new position works, the original slot in your system may be defective.
- Replace the adapter that is not working with one that is known to work properly. If the second adapter works in the slot where the first one failed, the original adapter is probably defective.
- Install the adapter in another functioning system and run the tests again. If the adapter passed the tests in the new system, the original system may be defective.
- Remove all other adapters from the system and run the tests again. If the adapter passes the tests, the other adapters may be causing contention.

Checking a Port LED on the Adapter

Each port has an LED that indicates the link status. The LED functions once the driver is installed and the cables are connected properly. The LED is lit solid if data traffic is present.

Before the port LED can provide troubleshooting information, the adapter must be connected to the network and the network driver for your particular operating system must be installed.

Before troubleshooting, verify the following:

- The adapter driver software has been installed.
- The adapter is connected to a network.
- The LED operates properly.

To check the LED status, see Table 1 on page 21.

Testing Network Connectivity

To test network connectivity for Windows, perform the following procedure:

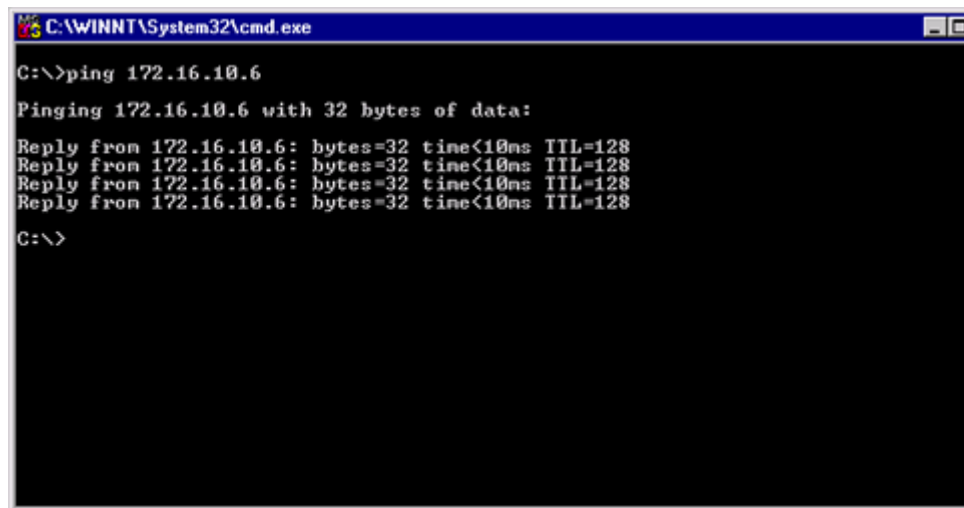
Note

When using forced link speeds, make sure that both the adapter and the switch, or link partner are forced to the same speed. Or, make sure the adapter and the link partner are configured for Auto-Negotiation.

1. Start the DOS prompt.

See “Starting the DOS Diagnostic Utility” on page 105.
2. At the prompt, type **ipconfig /all**
3. Type **ping <IP address>** from the command line, then press **Enter**.

The network connectivity information is displayed, as shown in Figure 61.



```
C:\WINNT\System32\cmd.exe
C:\>ping 172.16.10.6
Pinging 172.16.10.6 with 32 bytes of data:
Reply from 172.16.10.6: bytes=32 time<10ms TTL=128
Reply from 172.16.10.6: bytes=32 time<10ms TTL=128
Reply from 172.16.10.6: bytes=32 time<10ms TTL=128
Reply from 172.16.10.6: bytes=32 time<10ms TTL=128
C:\>
```

Figure 61. Command Window with ping displayed

Software Problems and Solutions

Microsoft Remote Installation Service (RIS) Instructions

Problem: Microsoft Remote Installation Service (RIS) installation fails for Windows XP.

Solution: Refer to Microsoft Article Q246184, "How to Add Third-Party OEM Network Adapters to RIS Installations."

Windows XP Image

To deploy a Windows XP Image, follow the steps in the Microsoft Article Q246184 at <http://support.microsoft.com/default.aspx?scid=kb%3ben-us%3b246184>.

Windows Server 2003

This section lists known problems and solutions for Windows Server 2003.

Problem: IP address is configurable on a member of the team.

Solution: When a team is created, the TCP/IP properties for the adapters are unselected. Then you can select and configure TCP/IP properties of the adapters and configure an IP address manually.

Problem: When creating 64 VLANs, all virtual adapters show disconnected or one of the 64 VLANs shows disabled.

Solution: The maximum VLAN configurations are 63 tagged and one untagged VLAN ID 0. If 64 tagged VLANs are created, they are disconnected. A reboot is required and only 63 tagged VLANs show links, while a 64th is disabled.

Miscellaneous

The following are known miscellaneous problems and solutions:

Problem: When the bus on the system is operating at PCIe mode, the adapter performs at PCIe mode if it is added by the Hot Plug application.

Solution: When the system is booted up without an adapter, the bus operates at the lowest mode which is PCIe. This problem can be corrected by rebooting the system.

Problem: The adapter may not perform at optimal level when it is added by the Hot Plug application on some systems.

Solution: The system BIOS, in some systems, does not set the cache line size and the latency timer, after the adapter is added by the Hot Plug application. This problem can be corrected by rebooting the system.

Appendix A

Specifications

This appendix contains the following specifications:

- ❑ “Physical and Power Specifications” on page 112
- ❑ “Environmental Specifications” on page 113
- ❑ “Power Specifications” on page 114
- ❑ “Performance Specification” on page 115
- ❑ “Optical Specifications” on page 116

Physical and Power Specifications

Table 4 provides the dimensions and weight specifications of the AT-2911 series adapters:

Table 4. Physical Specifications

Model	Length		Height		Weight	
	(cm)	(inch)	(cm)	(inch)	(g)	(oz)
AT-2911SX/ST	8.8	3.5	6.9	2.7	56.7	2.0
AT-2911SX/SC	8.8	3.5	6.9	2.7	56.7	2.0
AT-2911SX/LC	8.8	3.5	6.9	2.7	56.7	2.0
AT-2911LX/SC	8.8	3.5	6.9	2.7	56.7	2.0
AT-2911LX/LC	8.8	3.5	6.9	2.7	56.7	2.0
AT-2911SFP	8.9	3.5	6.9	2.7	45.4	1.6
AT-2911STX/SC	8.8	3.5	6.9	2.7	59.5	2.1
AT-2911STX/LC	8.8	3.5	6.9	2.7	59.5	2.1
AT-2911LTX/SC	8.8	3.5	6.9	2.7	59.5	2.1
AT-2911LTX/LC	8.8	3.5	6.9	2.7	59.5	2.1
AT-2911SX/2LC	8.3	3.3	6.9	2.7	65.2	2.3
AT-2911LX/2LC	8.3	3.3	6.9	2.7	65.2	2.3
AT-2911SFP/2	8.4	3.3	6.9	2.7	48.2	1.7
AT-2911T/2	7.6	3.0	6.9	2.7	48.2	1.7

Environmental Specifications

The following environmental specifications apply to the AT-2911 adapter:

Table 5. Environmental Specifications

Operating Temperature	0°C to 45°C (+32°F to +113°F)
Storage Temperature	-20°C to +70°C (-4°F to +158°F)
Operating Humidity	5% to 90% (non-condensing)
Storage Humidity	5% to 95% (non-condensing)
Operating Altitude Range	3048 m (10,000 ft.)

Power Specifications

The following power specifications apply to the AT-2911 adapter:

Table 6. Power Specifications

Model	Power (Watts)
AT-2911SX/ST	1.5 @ +3.3V
AT-2911SX/SC	1.5 @ +3.3V
AT-2911SX/LC	1.5 @ +3.3V
AT-2911LX/SC	1.5 @ +3.3V
AT-2911LX/LC	1.5 @ +3.3V
AT-2911SFP	1.5 @ +3.3V
AT-2911STX/SC	1.7 @ +3.3V
AT-2911STX/LC	1.7 @ +3.3V
AT-2911LTX/SC	1.7 @ +3.3V
AT-2911LTX/LC	1.7 @ +3.3V
AT-2911SX/2LC	2.4 @ +3.3V
AT-2911LX/2LC	2.4 @ +3.3V
AT-2911SFP/2	2.4 @ +3.3V
AT-2911T/2	1.4 @ +3.3V

Performance Specification

The following MTBF (Mean Time Between Failure) specifications apply to all of the AT-29xx Series adapters:

Table 7. MTBF Specifications

Model	MTBF@30C
AT-2911SX/ST	860,000
AT-2911SX/SC	1,960,000
AT-2911SX/LC	1,550,000
AT-2911LX/SC	810,000
AT-2911LX/LC	1,130,000
AT-2911SFP	7,720,000
AT-2911STX/SC	530,000
AT-2911STX/LC	1,130,000
AT-2911LTX/SC	950,000
AT-2911LTX/LC	750,000
AT-2911SX/2LC	630,000
AT-2911LX/2LC	400,000
AT-2911SFP/2	6,910,000
AT-2911T/2	3,430,000

Optical Specifications

The following optical specifications apply to the AT-2911 series adapters:

Table 8. Optical Specifications

	Optical Sensitivity	Output Optical Power	Wavelength
1000SX/ST Connector	-17 dBm	-9.5/-4 dBm	850 nm
1000SX/SC Connector	-17 dBm	-9.5/-4 dBm	850 nm
1000SX/LC Connector	-17 dBm	-9.5/-1.5 dBm	850 nm
1000LX/SC Connector	-20 dBm	-9.5/-3 dBm	1310 nm
1000LX/LC Connector	-20 dBm	-9.5/-3 dBm	1310 nm

Appendix B

Cleaning Fiber Optic Connectors

This appendix explains how to clean fiber optic connectors and includes the following topics:

- “Overview” on page 118
- “Cleaning Fiber Optic Connectors Using a Cartridge-Type Cleaner” on page 119
- “Cleaning Fiber Optic Connector Using a Swab” on page 121

Overview

The fiber optic connector consists of a fiber optic plug and its adapter. The end of the fiber optic cable is held in the core of the ferrule in the plug. Light signals are transmitted through the core of the fiber. Even minor smudges or dirt on the end face of the fiber, completely invisible to the naked eye, can disrupt light transmission and lead to failure of the component or of the entire system. Therefore, it is of utmost importance to clean all fiber optic connectors before use.

Figure 62 shows the ferrule in an SC connector.

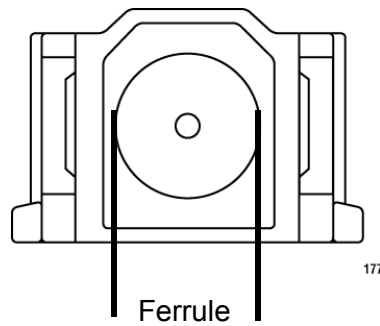


Figure 62. Ferrule in an SC Connector Plug

Figure 63 shows part of the end face of an unclean and clean ferrule.

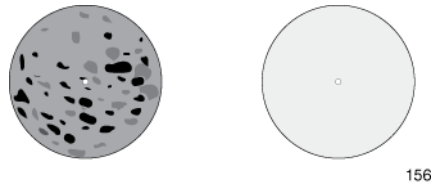


Figure 63. Unclean and Clean Ferrule

Cleaning Fiber Optic Connectors Using a Cartridge-Type Cleaner

Fiber optic cartridge-type cleaners are available from many vendors and typically called “cartridge cleaners.” See Figure 64.



Figure 64. Cartridge Cleaner

Note

Do not use compressed air or aerosol air to clean a fiber optic connector.

To clean a fiber optic connector using a cartridge cleaner, do the following:

1. With one hand, hold the cartridge cleaner and push the lever on the cleaning cartridge in the direction of the arrow to expose the cleaning surface.
2. Place the ferrule tip on the exposed cleaning surface and rub the ferrule in a downward direction, as shown in Figure 65.

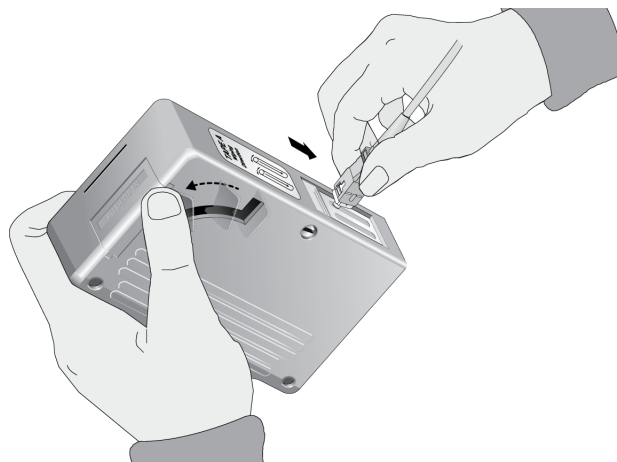


Figure 65. Rubbing the Ferrule Tip on the Cleaning Surface

Note

Rub the ferrule tip on the cleaning surface in one direction only.

3. When you reach the end of the cleaning surface, pick up the ferrule tip, rotate and place it at the top and rub downwards at least 2 times.



Caution

Failing to pick up the ferrule tip when you reach the bottom of the cleaning surface can result in static electricity that can damage the fiber optic cable. *see* E82

4. If desired, repeat steps 3 and 4.
5. If a fiber inspection scope is available, use the scope to inspect the ferrule end face to make sure that it is clean.
6. Reconnect the cable to the port or protect the ferrule tip with a dust cap.

Note

Always keep a dust cap on a fiber optic cable when it is not in use.

Note

Do not touch the end face of the ferrule in the connector.



Warning

Do not stare into the laser beam. *see* L2



Warning

Do not look directly at the fiber optic cable ends or inspect the cable ends with an optical lens. *see* L6

Cleaning Fiber Optic Connector Using a Swab

Specially treated swabs (stick cleaners) are available for cleaning inside connector adapters or hard-to-reach ferrule tips. These swabs, often referred to as “lint free” or “alcohol free” swabs, are available from many vendors. Stick cleaners are available in both 2.5 mm and 1.25 mm sizes for use on SC and MU connectors respectively. See Figure 66.

Note

NEVER use a household cotton swab and/or alcohol to clean a fiber optic connector. This may leave a residue on the ferrule tip.

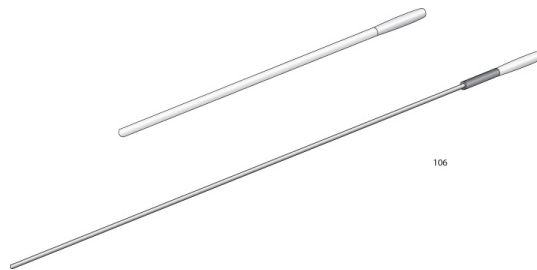


Figure 66. Lint-Free and Alcohol-Free Swabs

Note

Do not use compressed air or aerosol air to clean a fiber optic connector.

To clean a recessed ferrule using a swab, do the following.

1. Insert the swab into the adapter as shown in Figure 65 and rub the ferrule tip with the swab.

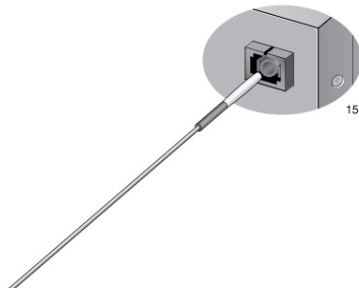


Figure 67. Cleaning a Recessed Ferrule

2. If needed, repeat step 1.

3. If a fiber inspection scope is available, use the scope to inspect the connector to make sure that it is clean and to check for scratches, pits, or other problems that may affect performance.

Note

Always keep a dust cap on a fiber optic cable when it is not in use.



Warning

Do not stare into the laser beam. ⚠ L2



Warning

Do not look directly at the cable ends or inspect the cable ends with an optical lens. ⚠ L6
