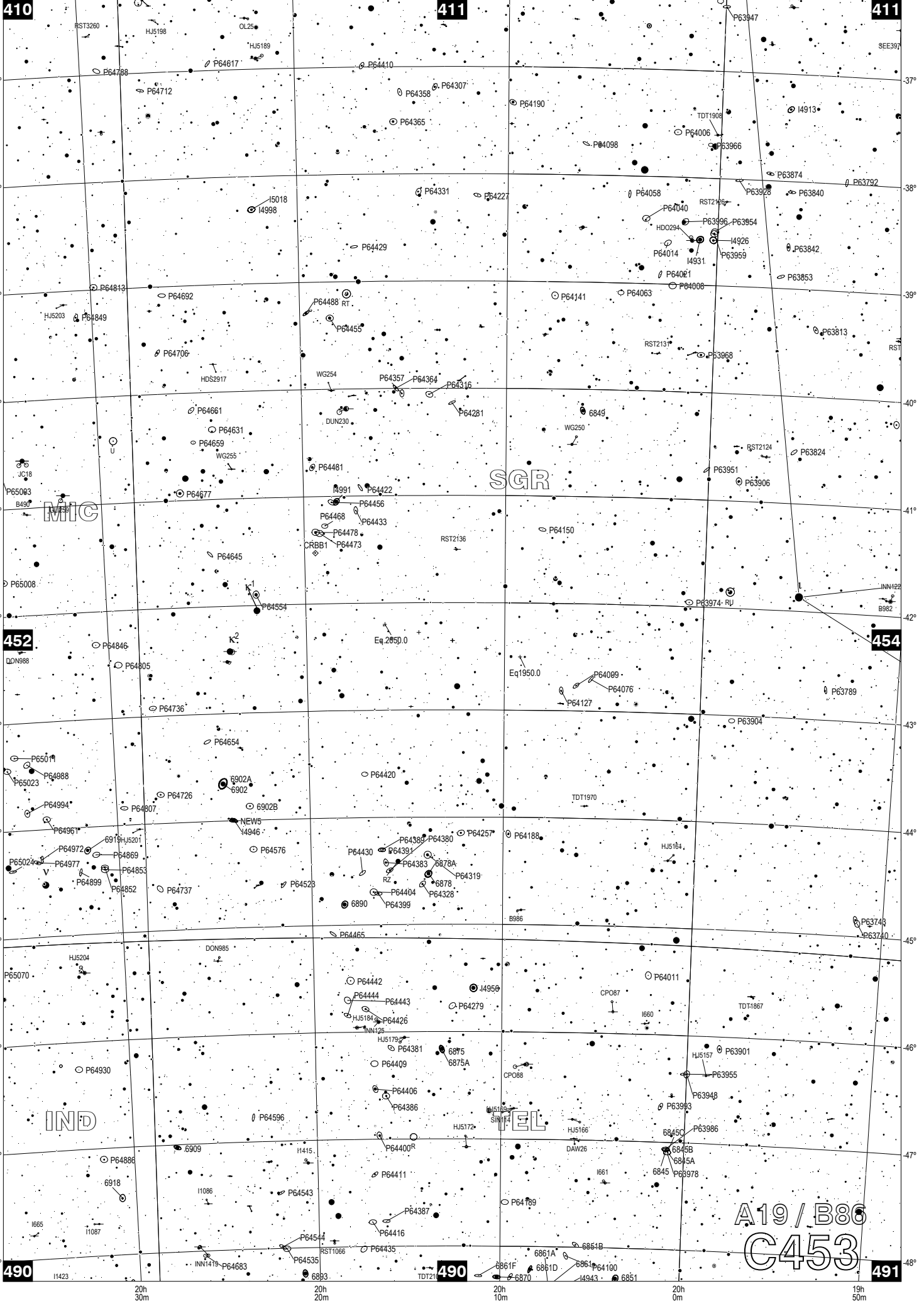


A19 / B85  
C452



410

411

411

452

454

490

490

491

MIC

SGR

IND

TEL

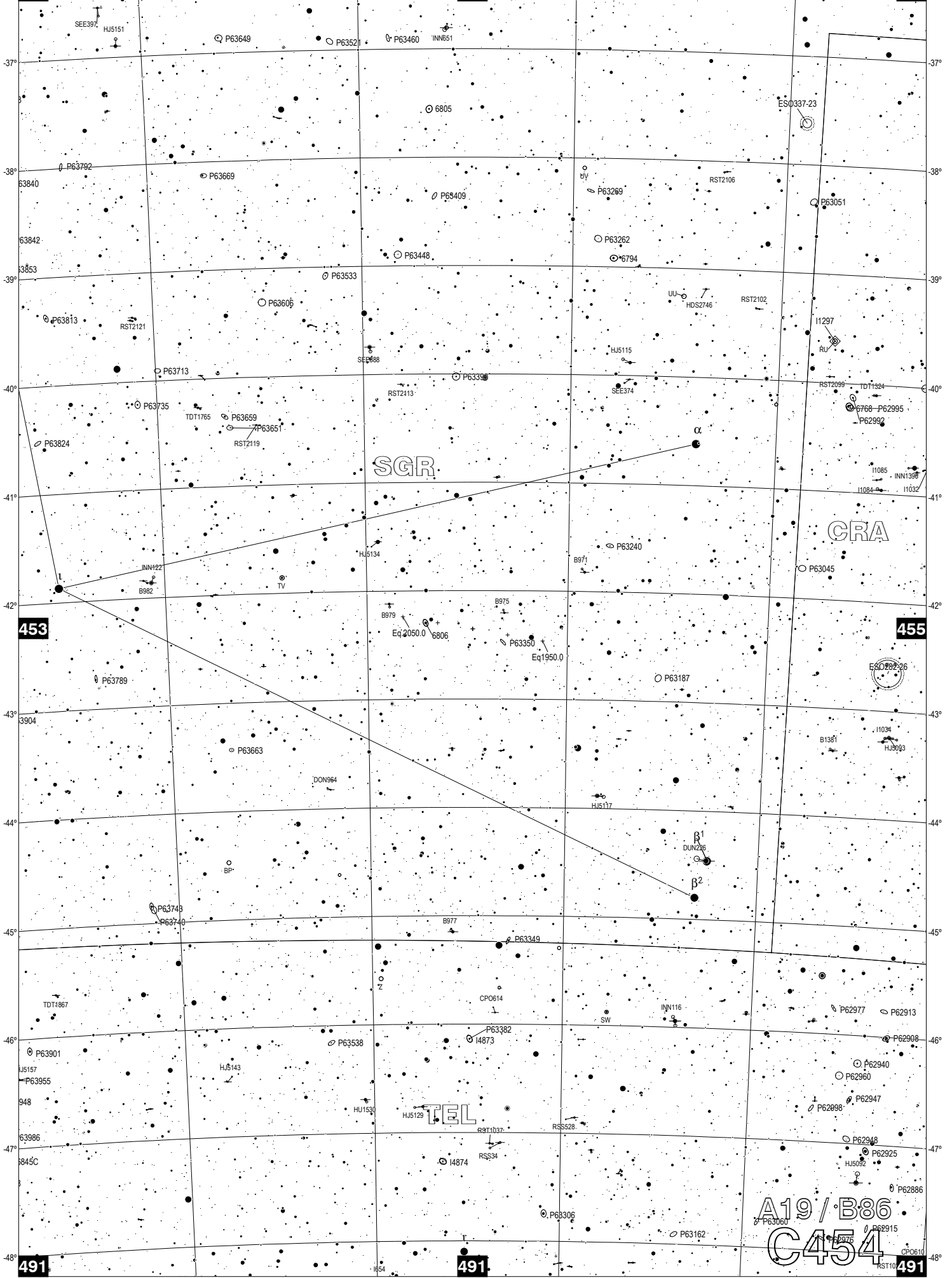
A19 / B86  
C453

**C454**

**411**

**412**

**412**



**453**

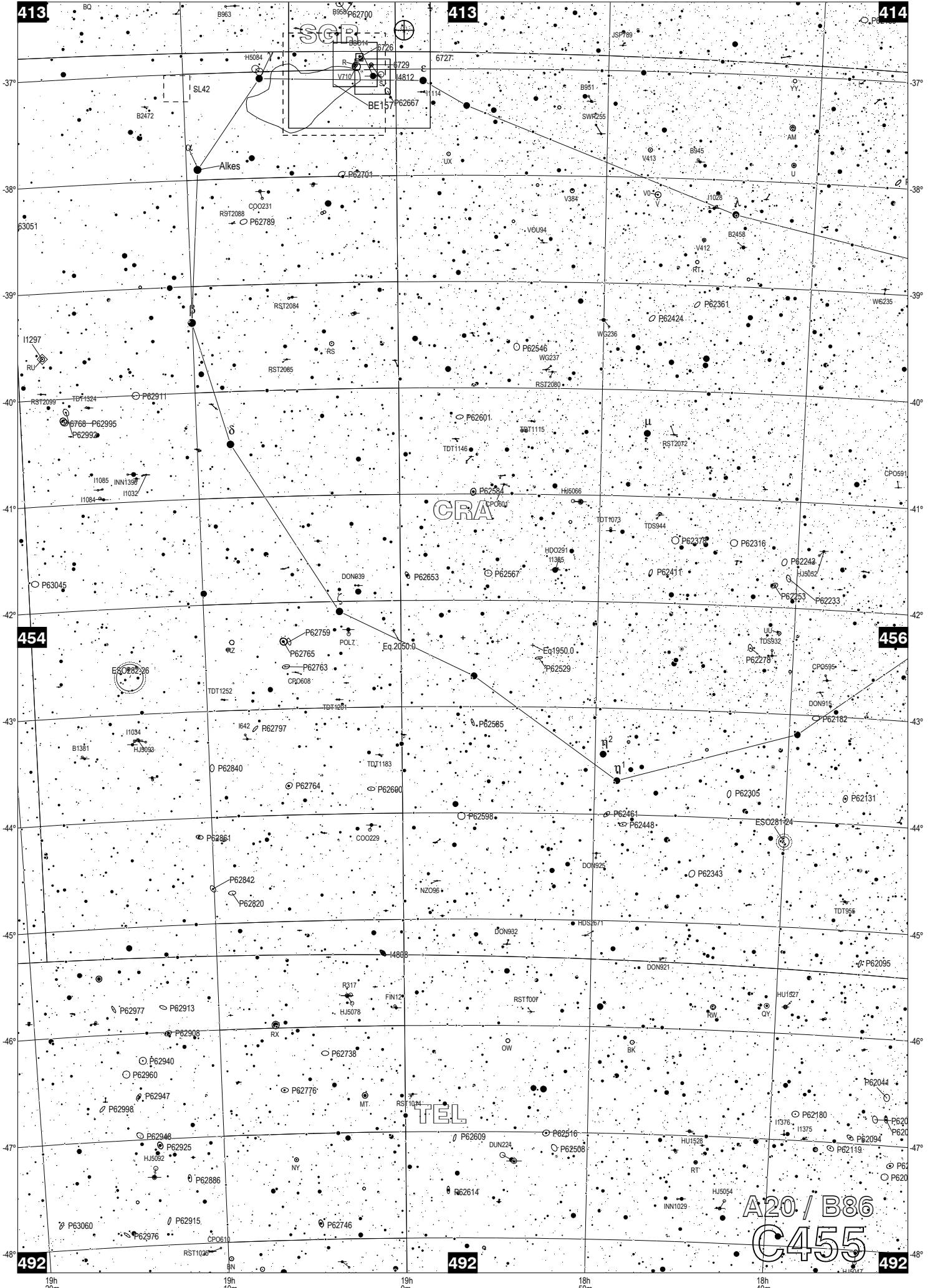
**455**

**491**

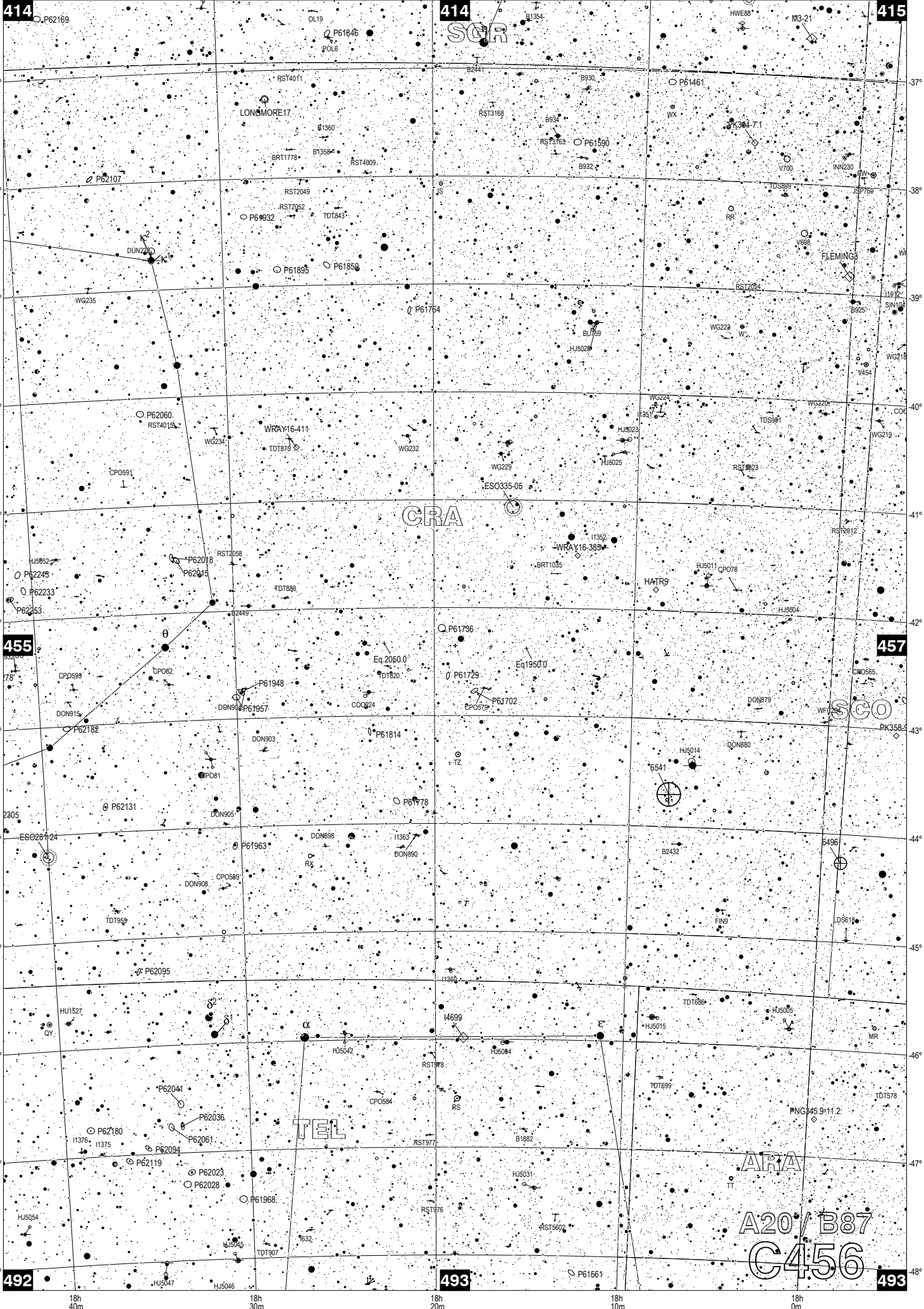
**491**

**491**

A19 / B86  
C454



A20 / B86  
C455



414

414

415

455

457

492

493

493

18h 40m

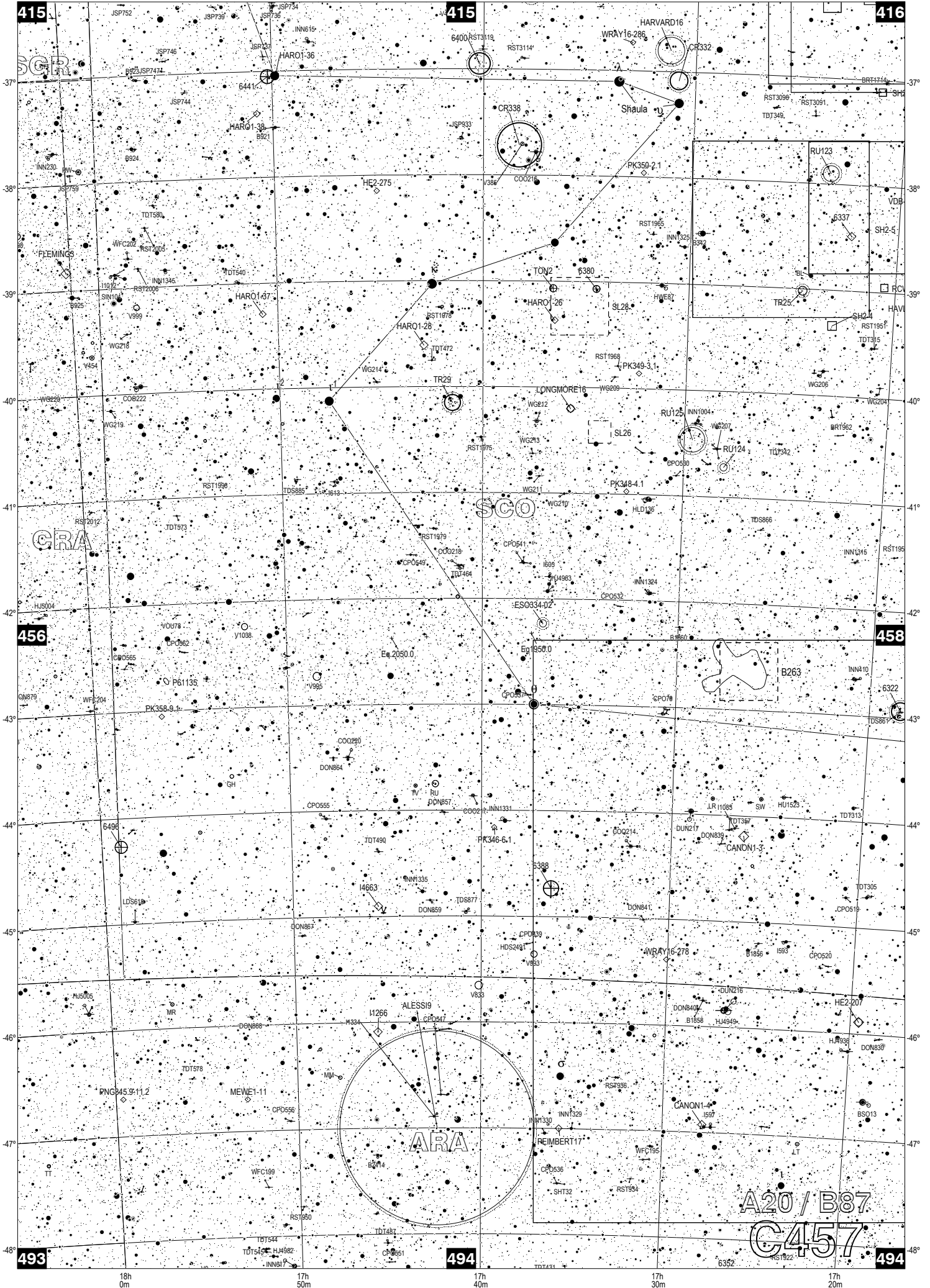
18h 30m

18h 20m

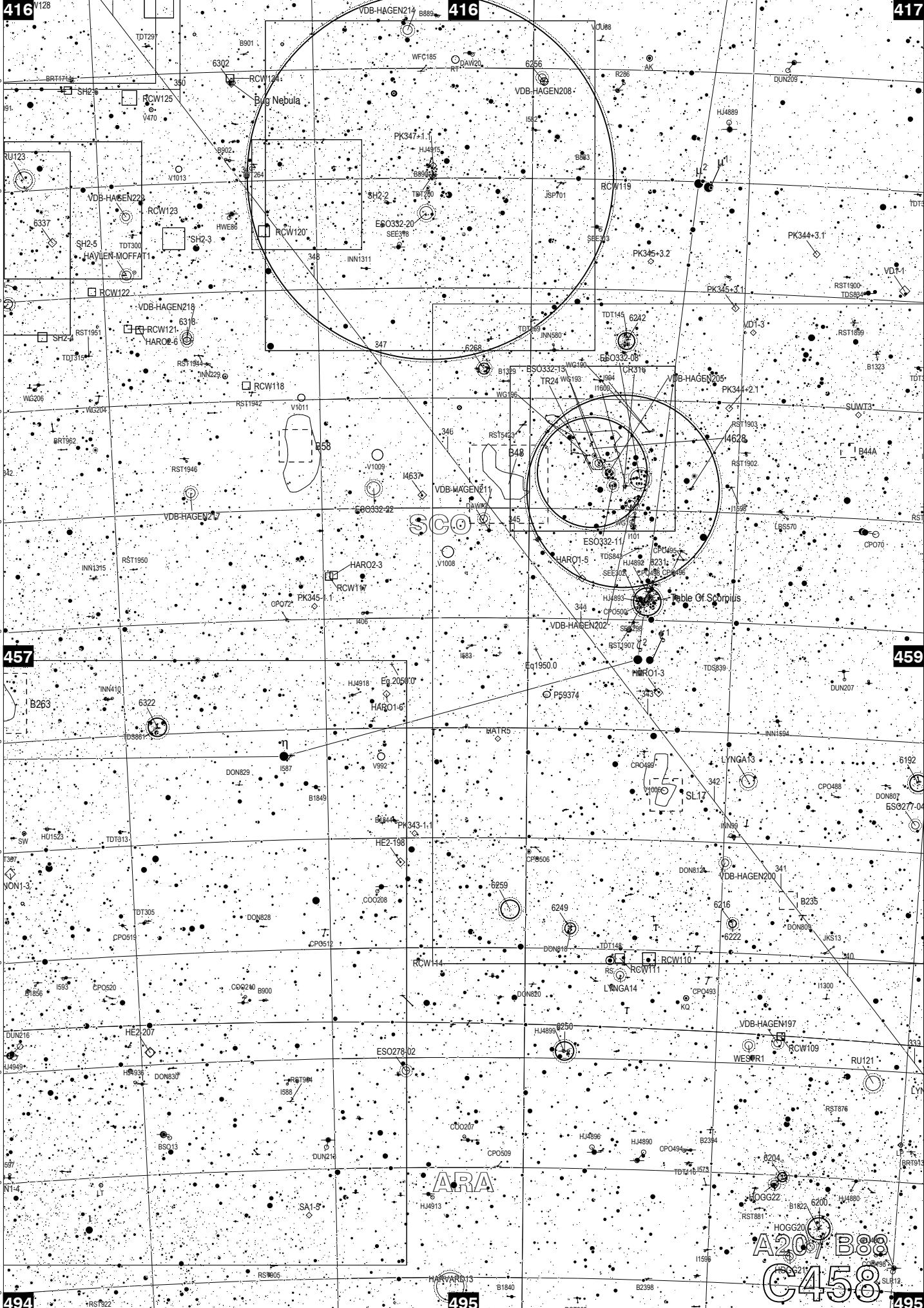
18h 10m

18h 0m

A20 / B87  
C456



A20 / B87  
C457



416<sup>V128</sup> 416 417

457 459

494 495 495

A20 B88  
C458

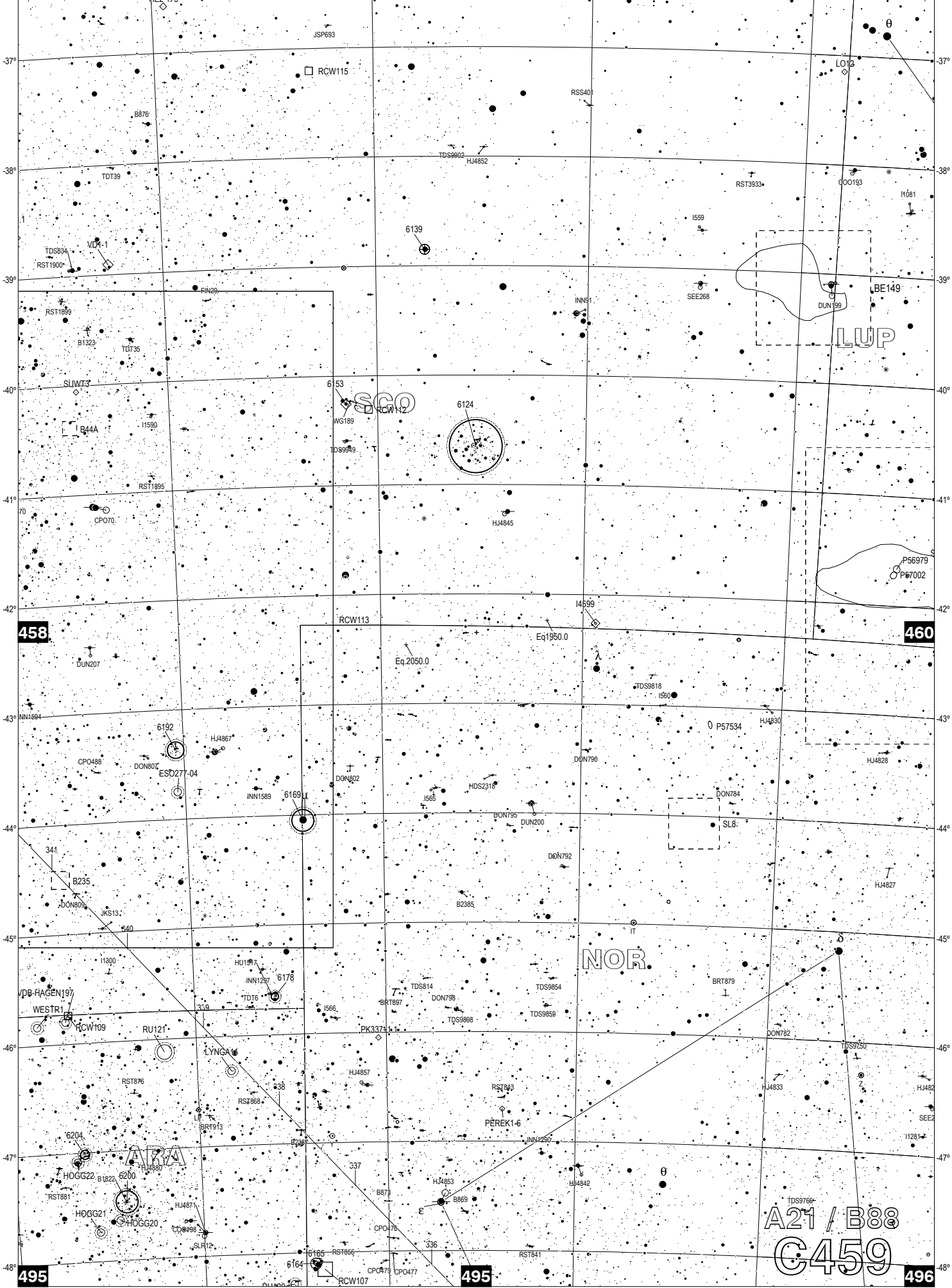


C459

417

418

418



458

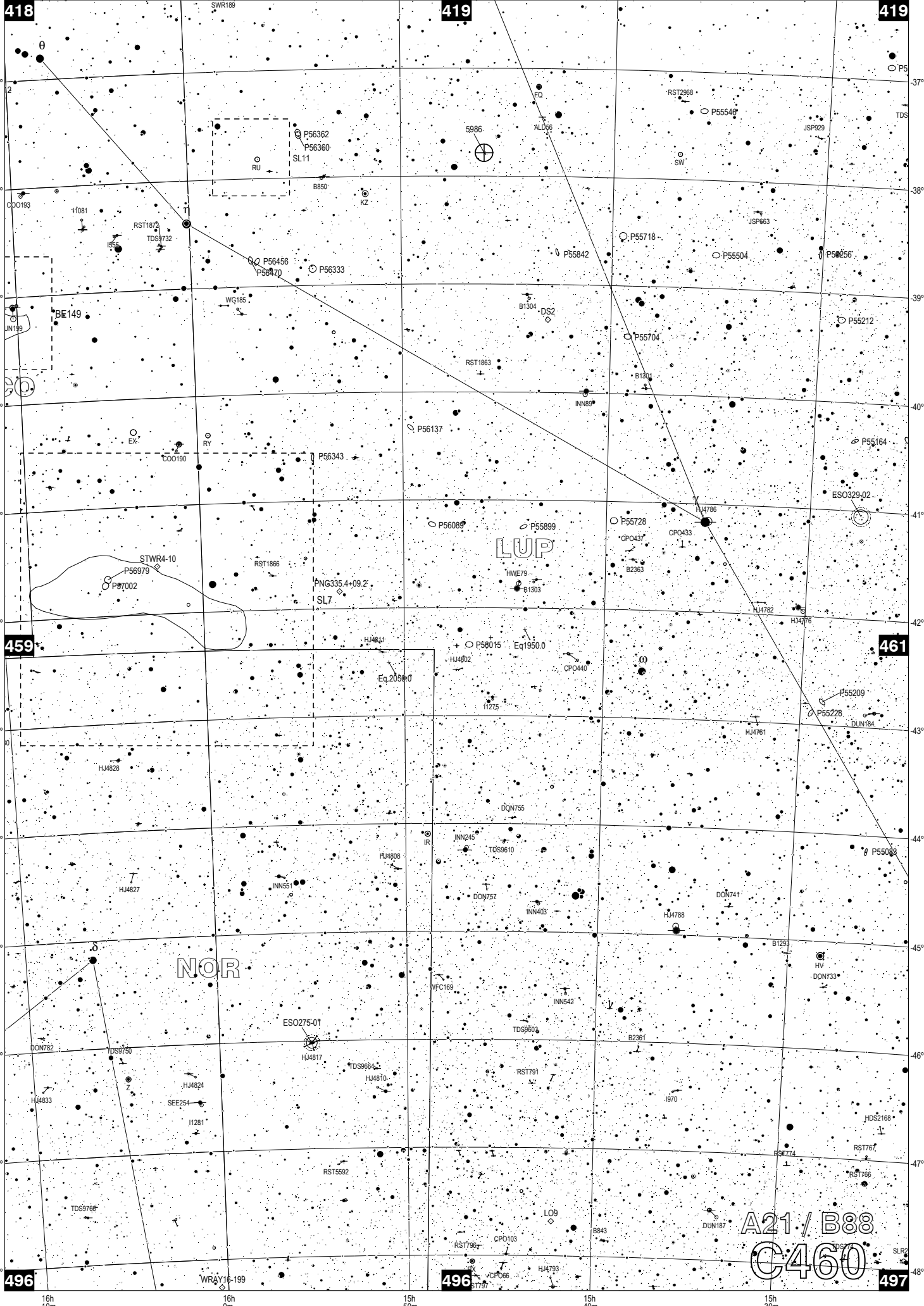
460

495

495

496

A21 / B88  
C459



418

419

419

459

461

496

496

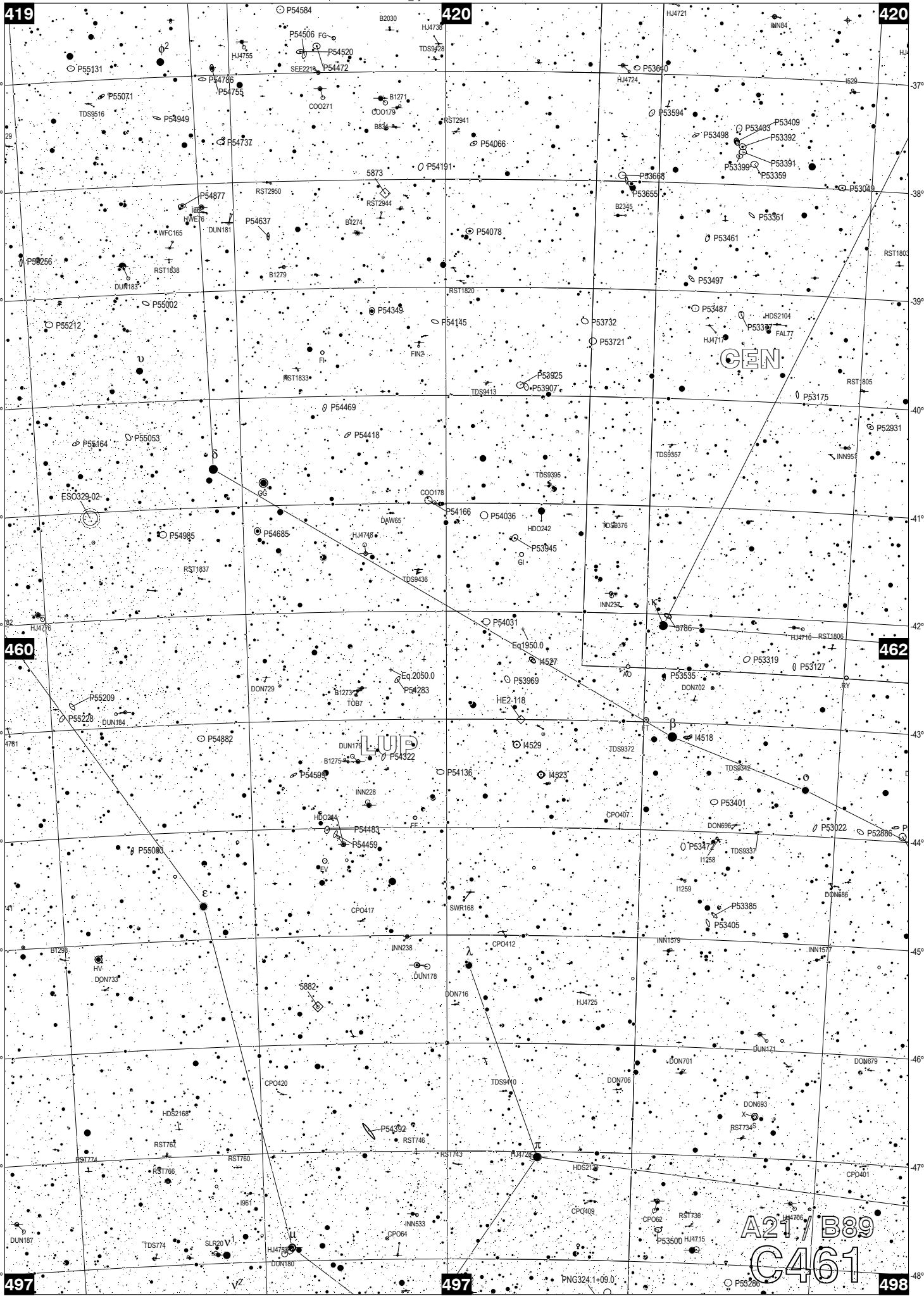
497

A21 / B88  
C460

NOR

LUP

16h 10m 16h 0m 15h 50m 15h 40m 15h 30m



419

420

420

460

462

497

497

498

GEN

LUP

A21/B89  
C461

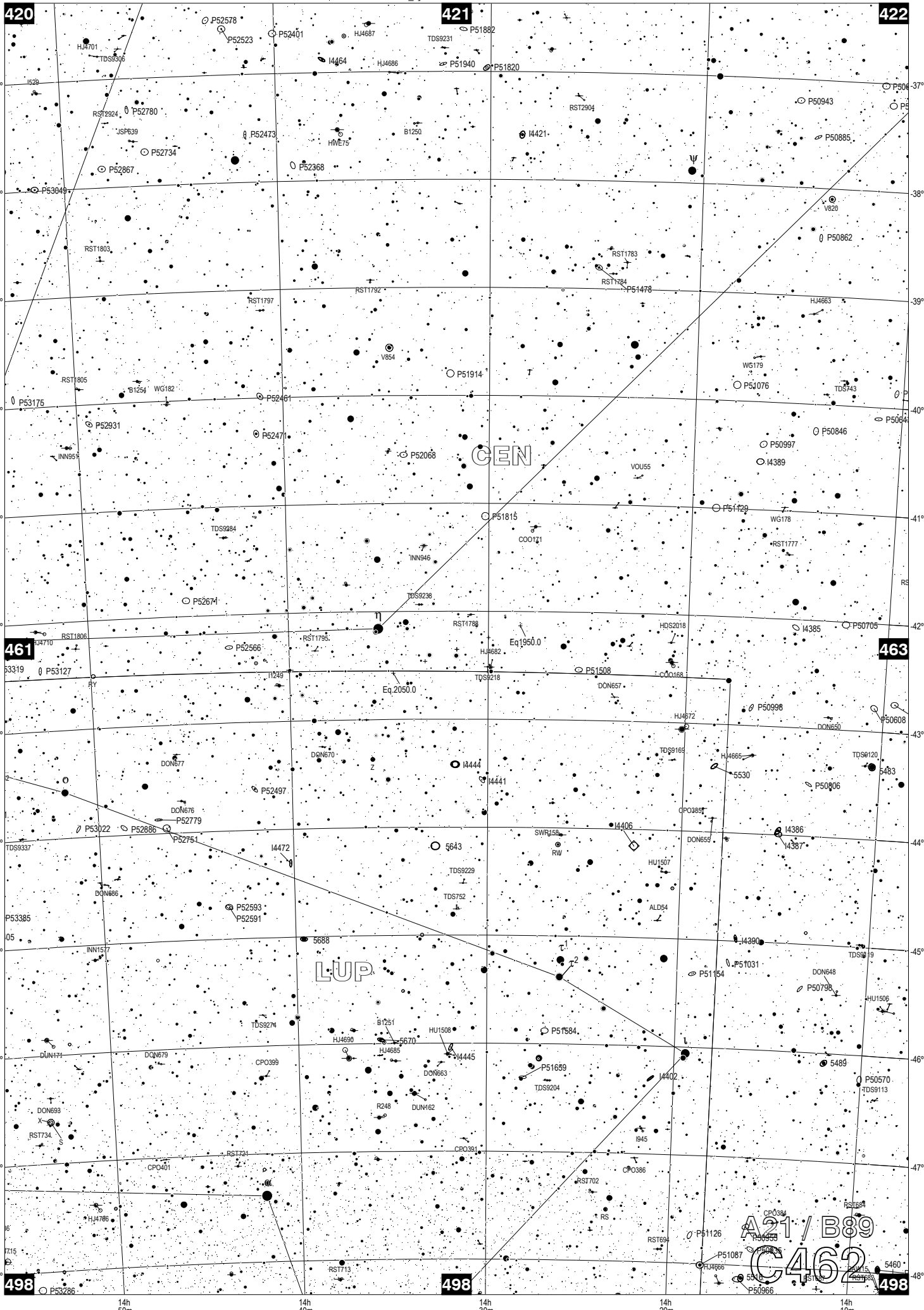
15h  
30m

15h  
20m

15h  
10m

15h  
0m

14h  
50m



420

421

422

461

463

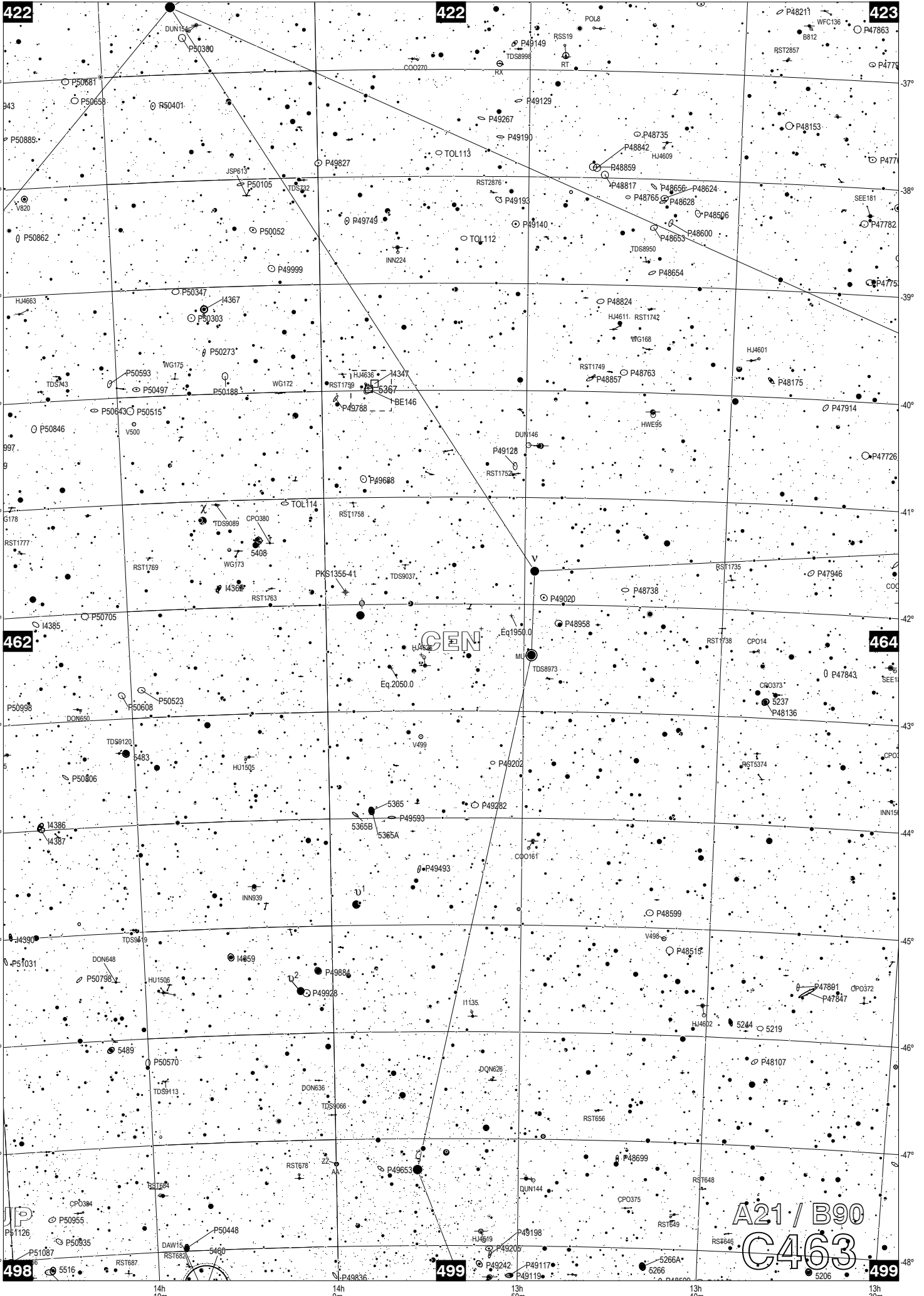
498

498

498

A21 / B89  
C462  
5460

14h 50m      14h 40m      14h 30m      14h 20m      14h 10m



A21 / B90  
C463



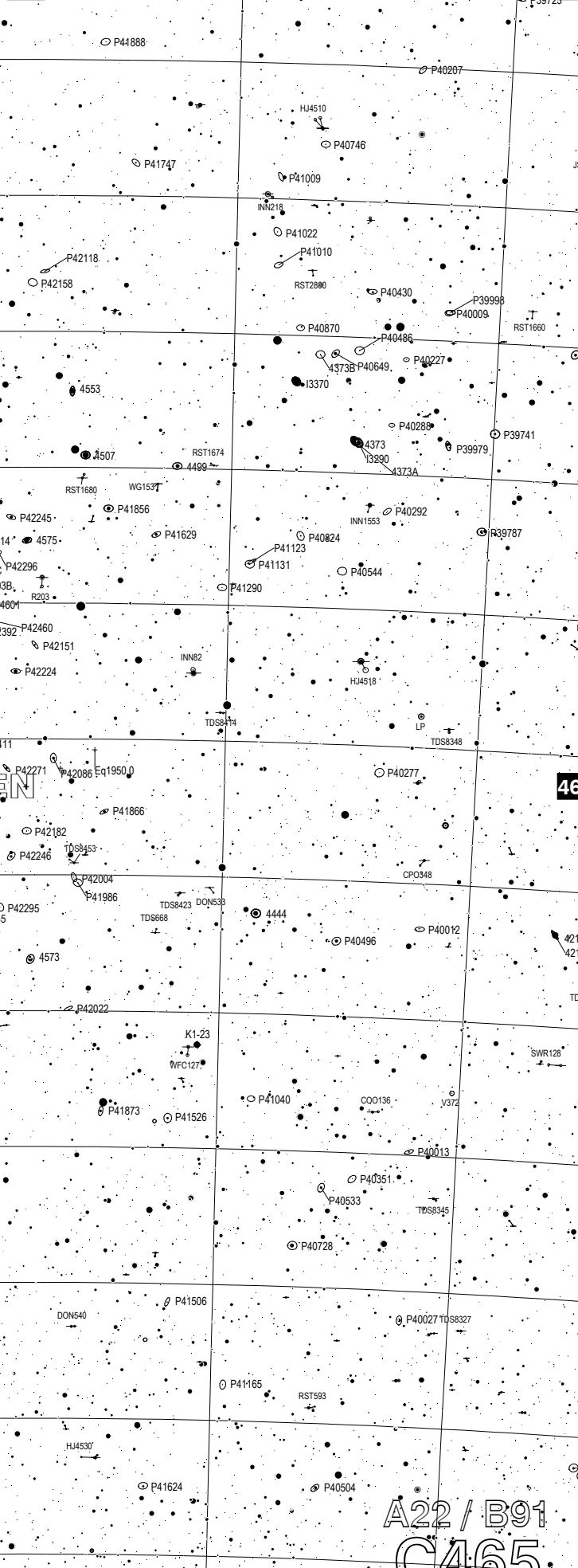
C465

424



500

424



501

425



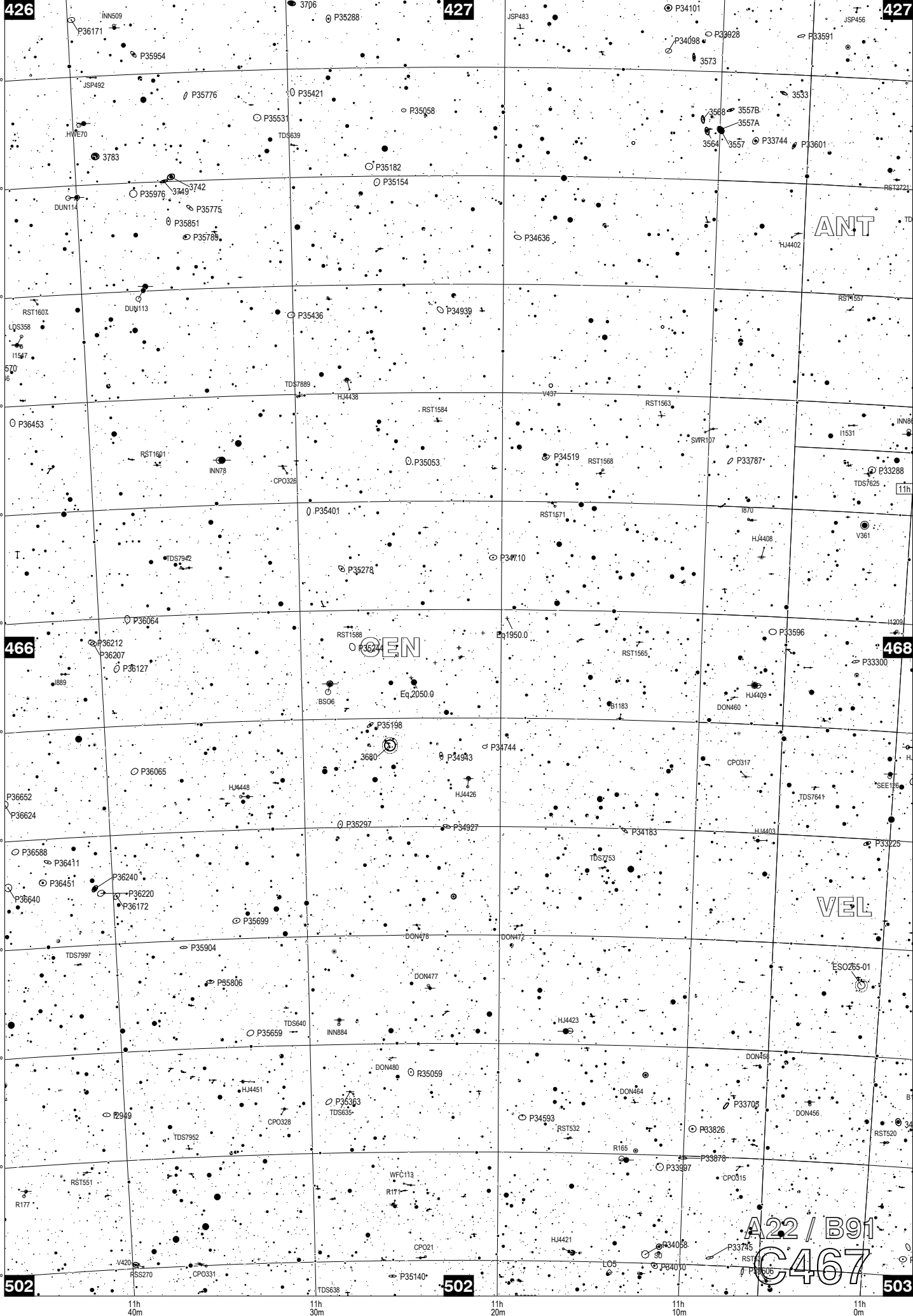
501

CEN

A22 / B91  
C465

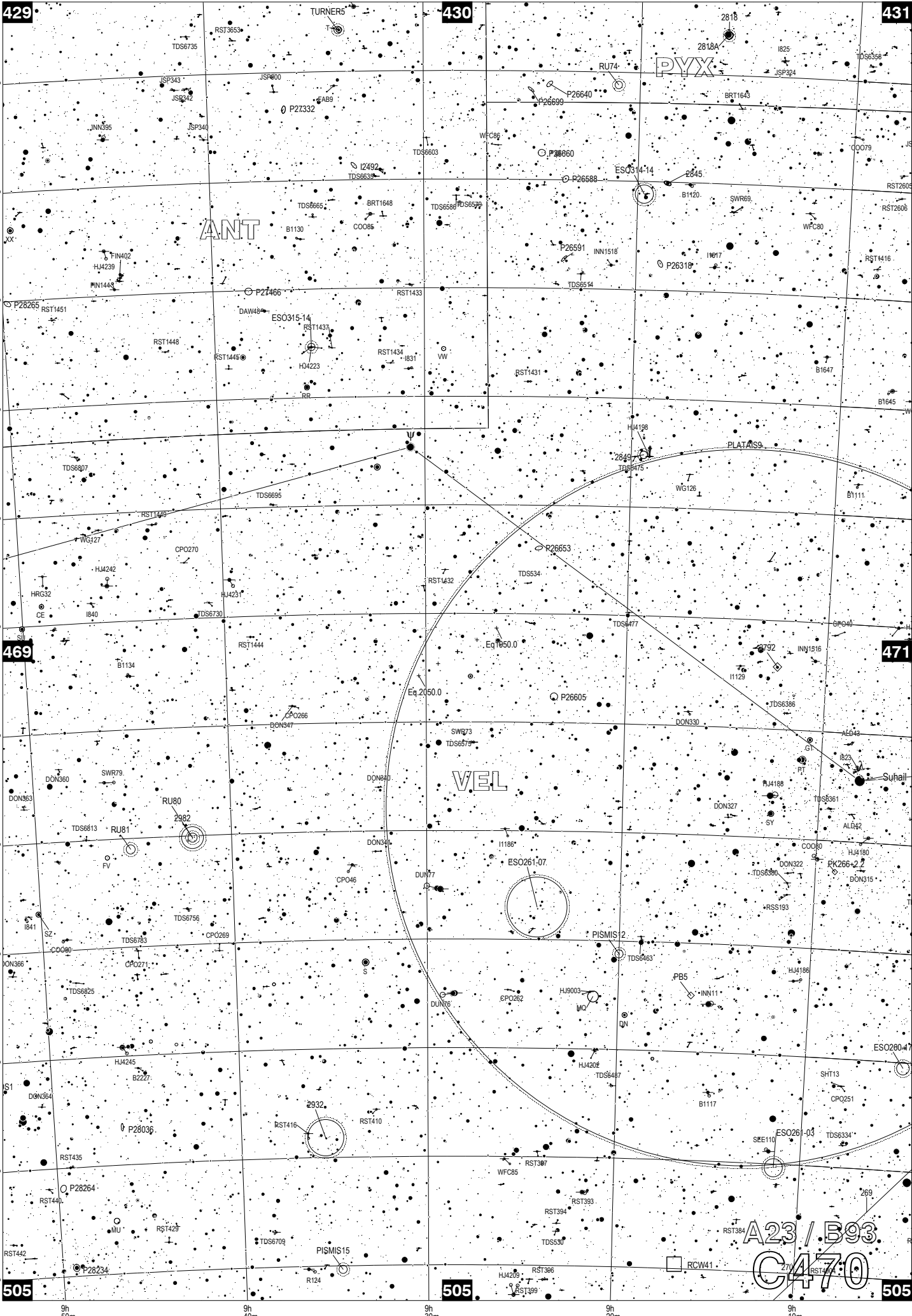


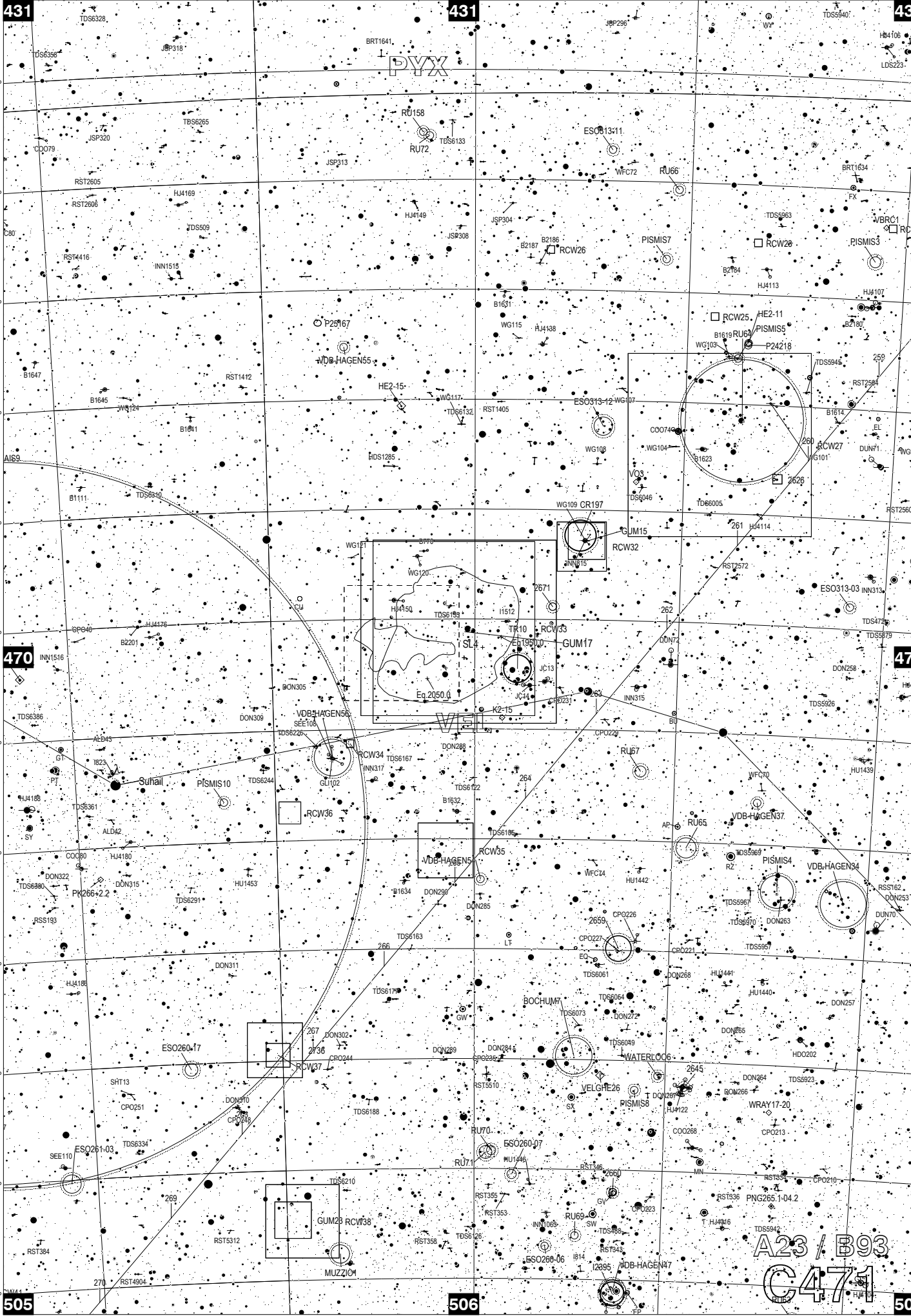


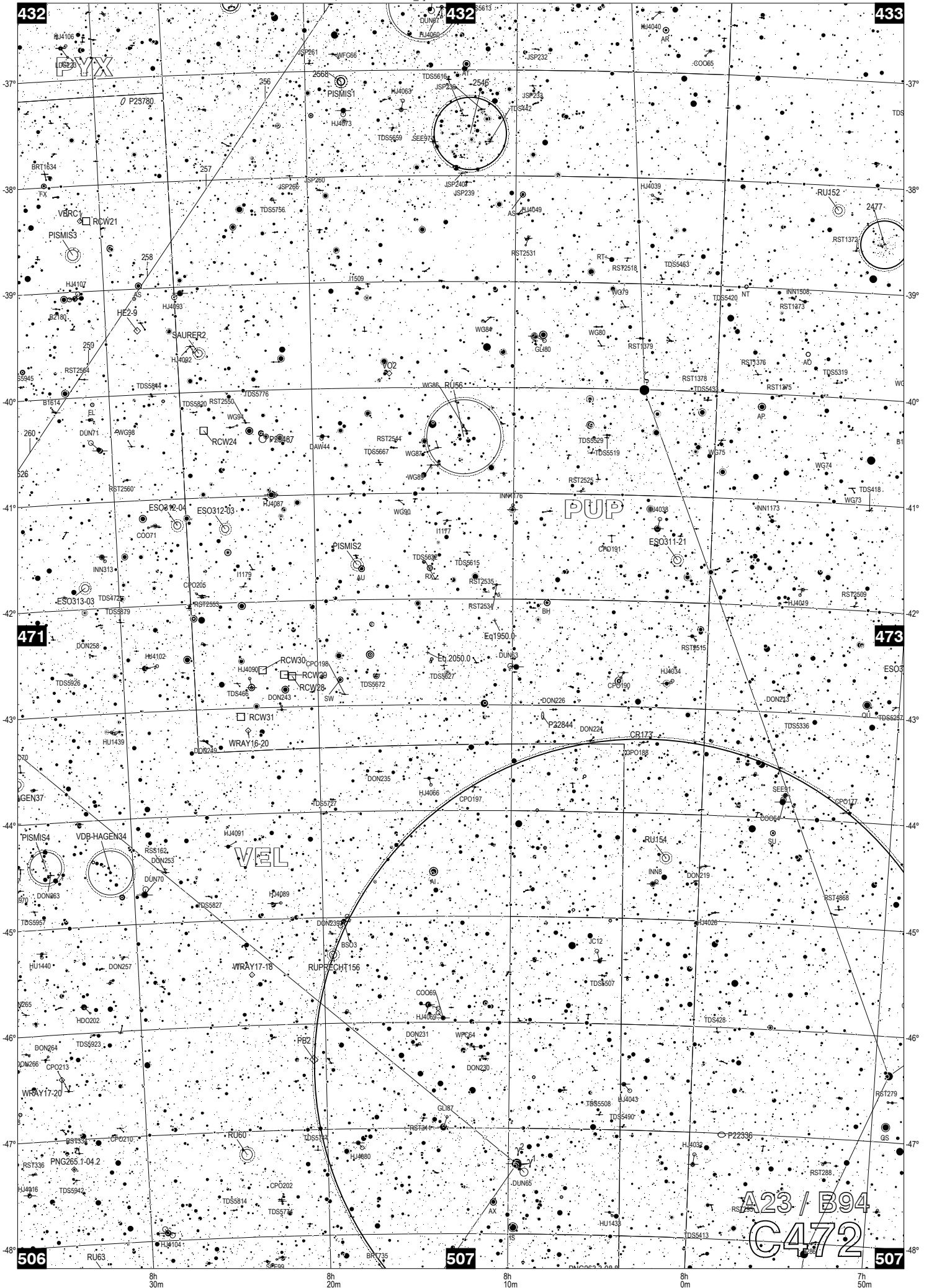




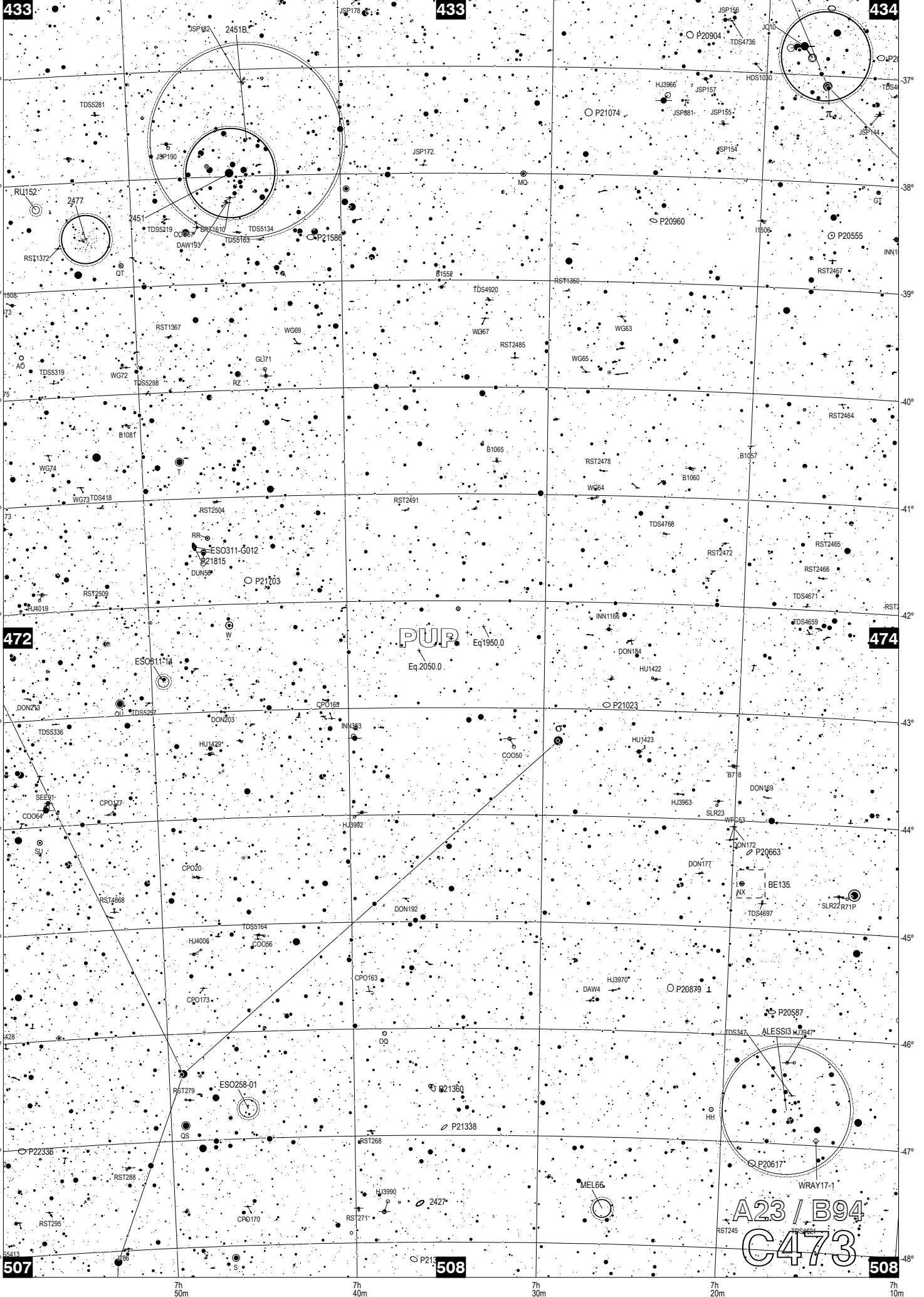








A23 / B94  
C472



433

433

434

472

474

507

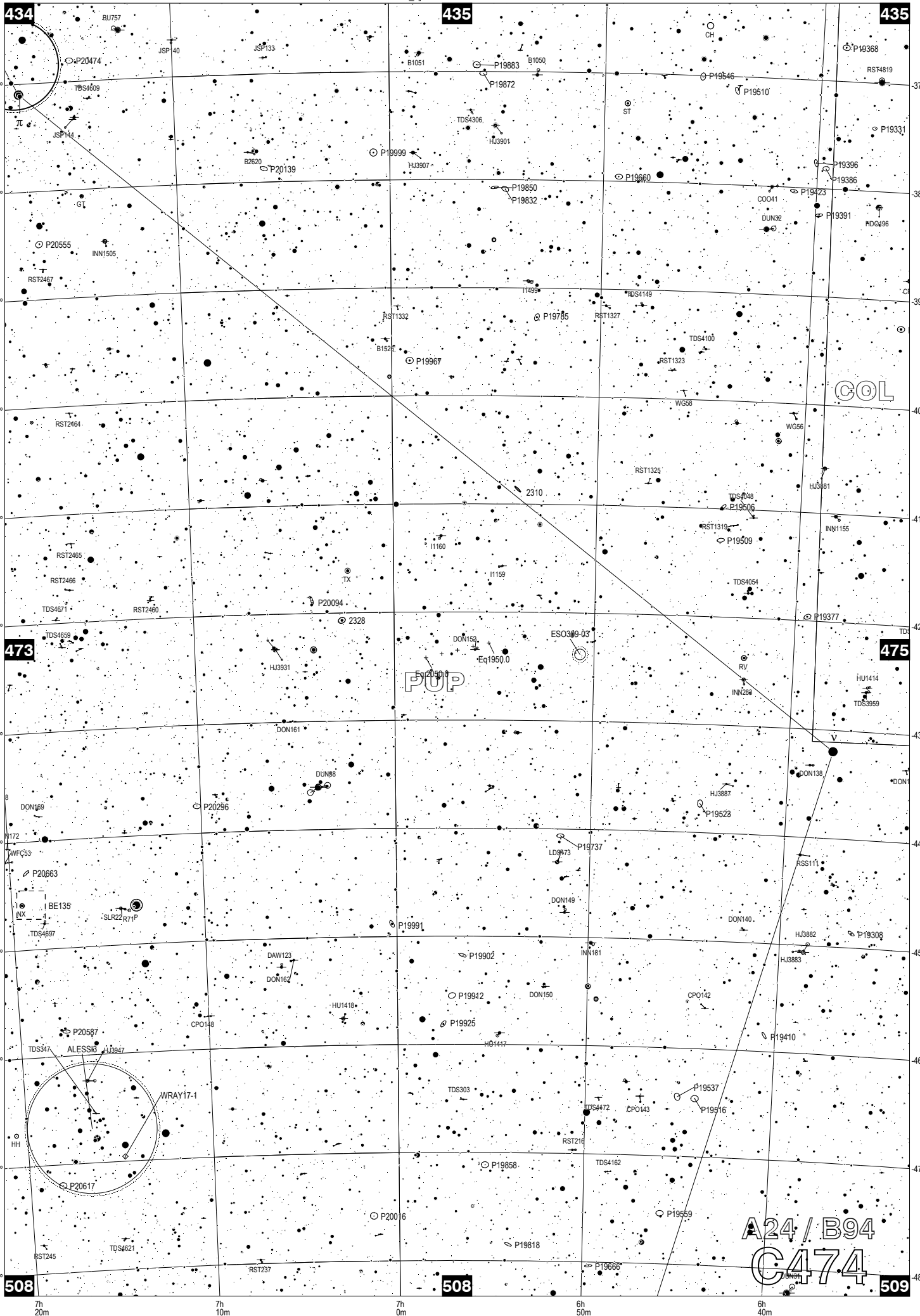
508

508

A23 / B94  
C473

**C474**

● VARST ● DBLST □ BRTNB □ DRKNB ◆ PLNNB ○ ASSOC ○ OPNCL ⊕ GLOCL □ CL+NB ⊖ GALXY ○ GALCL + QUASR ● 0 ● 1 ● 2 ● 3 ● 4 ● 5 ● 6 ● 7 ● 8 ● 9 ● 10 ● 11 ● 12 ● 13



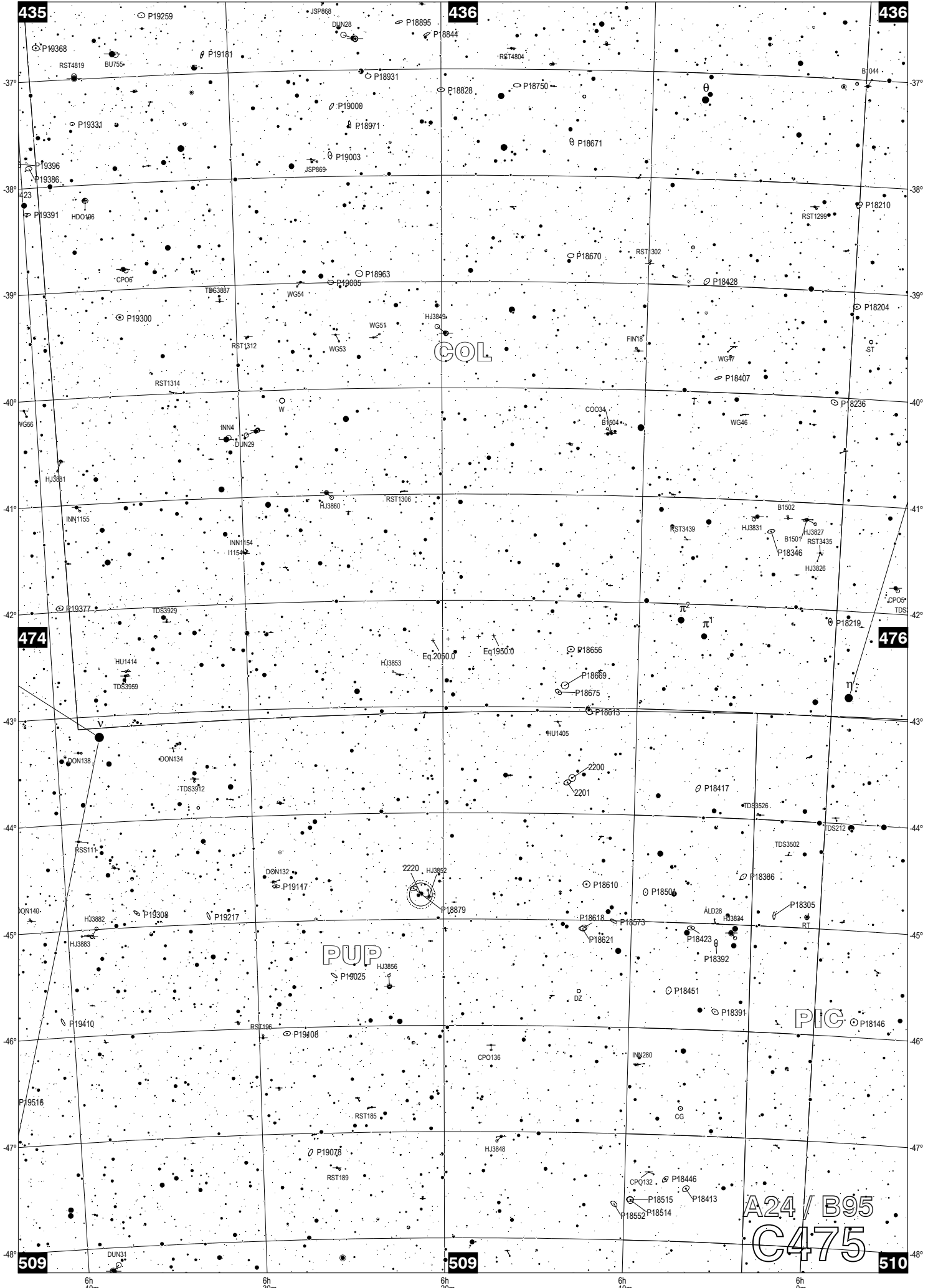
A24 / B94  
C474



C475

VARST DBLST BRTNB DRKNB PLNNB ASSOC OPNCL GLOCL CL+NB GALXY GALCL QUASR

-1 0 1 2 3 4 5 6 7 8 9 10 11 12 13



435

436

436

474

476

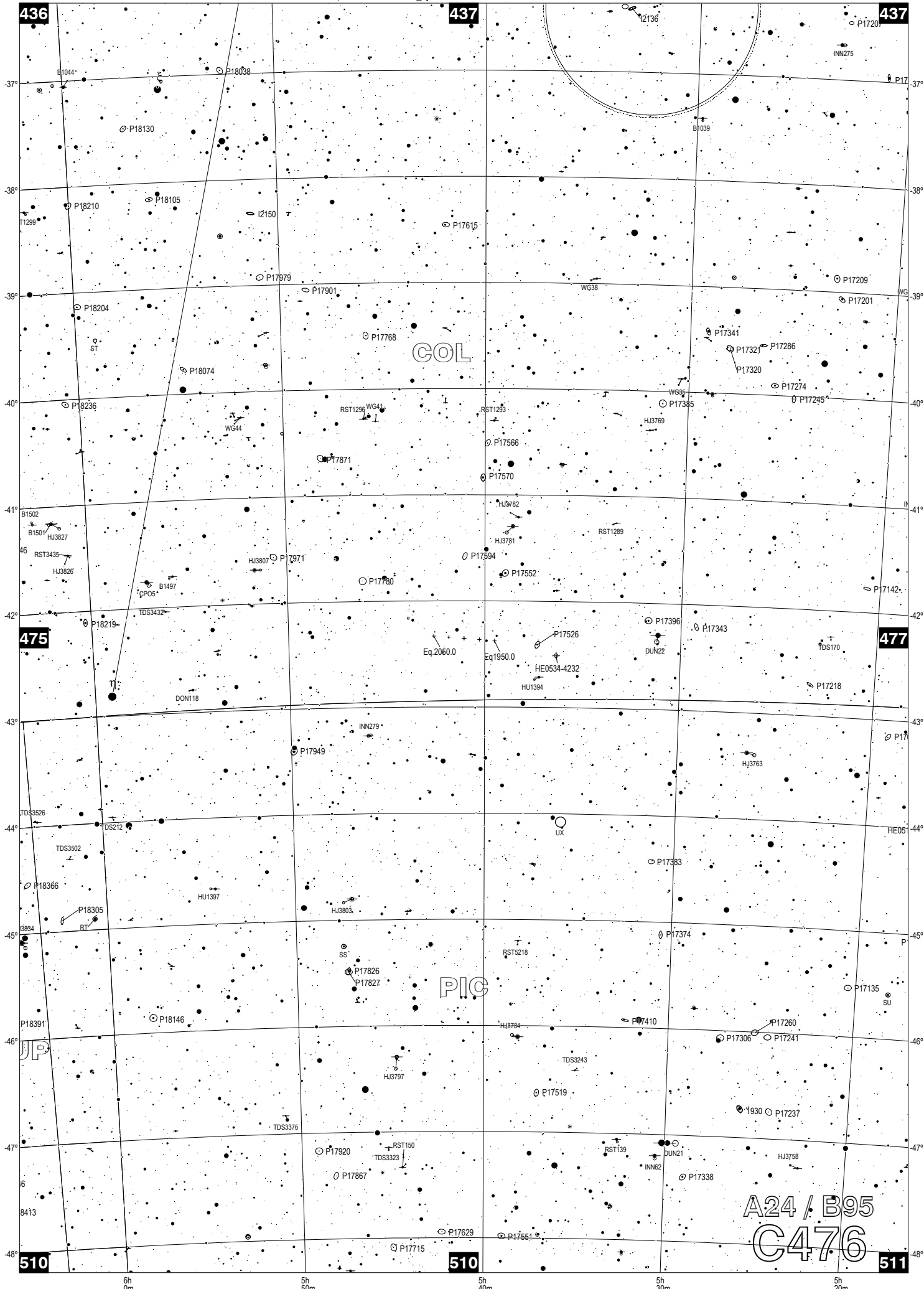
509

509

510

A24 / B95  
C475

6h 40m 6h 30m 6h 20m 6h 10m 6h 0m

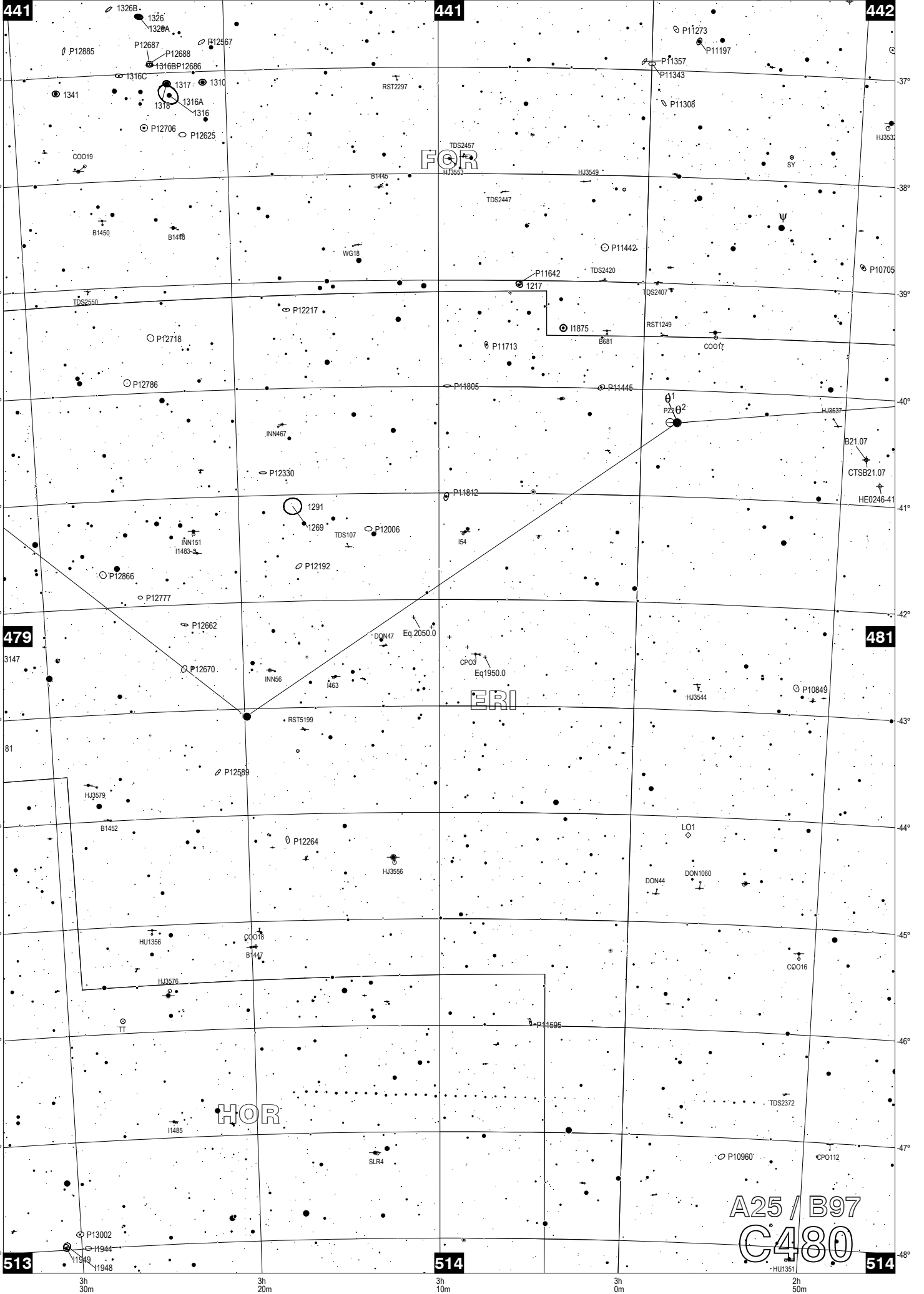


A24 / B95  
C476









**479**

**481**

**513**

**514**

**514**