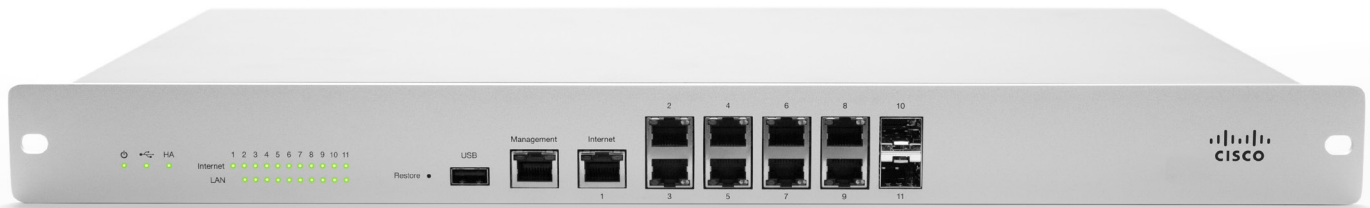


MX Cloud Managed Security Appliance Series



Overview

Cisco Meraki MX Security Appliances is ideal for organizations with large numbers of distributed sites. Since the MX is 100% cloud managed, installation and remote management is simple. The MX has a comprehensive suite of network services, eliminating the need for multiple appliances. Services include Layer 7 application firewall, content filtering, web search filtering, SNORT® based intrusion prevention, web caching, Intelligent WAN with multiple WAN uplinks and 4G failover.

Feature-rich Unified Threat Management (UTM) Capabilities

- Application-aware traffic control: set bandwidth policies based on Layer 7 application type (e.g., YouTube, Skype, P2P).
- Content filtering: CIPA-compliant content filter, safe-search enforcement (Google/Bing), and YouTube for Schools.
- Intrusion prevention: PCI-compliant IPS sensor using industry-leading SNORT® signature database from Sourcefire.
- Anti-virus and anti-phishing: flow-based protection engine powered by Kaspersky.
- Identity-based security policies and application management.

Industry-leading Cloud Management

- Unified WAN, LAN, and wireless LAN management through a web-based dashboard.
- Template based settings scale easily from small deployments to large, multi-site deployments with tens of thousands of devices.
- Role-based administration, email alerts on configuration change, connectivity issues and power loss, auditable change logs.
- Summary reports with user, device, and application usage details archived in the cloud.

Resilient Site-to-Site VPN with 4G Failover

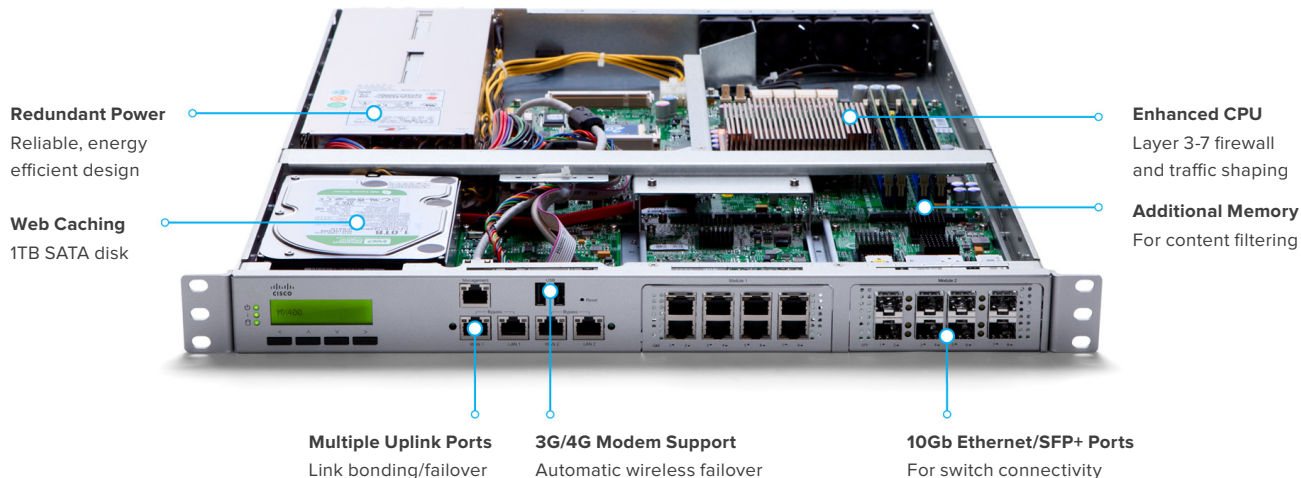
- Auto VPN: automatic routing table generation, IKE/IPsec setup and key exchange via Cisco Meraki's secure cloud.
- Automatic failover to secondary WAN link or 4G connection.
- Interoperates with standards-based IPsec VPNs.
- Automated MPLS to VPN failover.
- Client VPN: L2TP IPsec support for native Windows, Mac OS X, iPad and Android clients with no per-user licensing fees.

Branch Gateway Services

- Built-in DHCP, NAT, QoS, and VLAN management services.
- Web caching: accelerates frequently accessed content.
- Link bonding: combines multiple WAN links into a single high-speed interface, with policies for QoS, traffic shaping, and failover.
- Layer 3 failover: automatic detection of layer 2 and layer 3 outages and fast failover, including 3G/4G USB modems.

Inside the Cisco Meraki MX

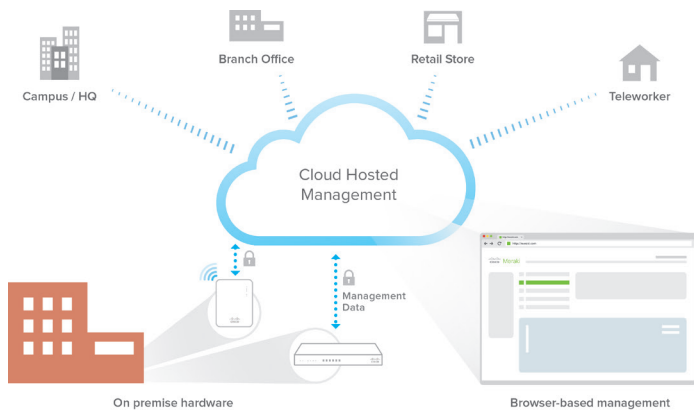
MX400 shown, features vary by model



Cloud Managed Architecture

Built on Cisco Meraki's award-winning cloud-managed architecture, the MX is the only 100% cloud-managed Unified Threat Management appliance. MX appliances self-provision, automatically pulling policies and configuration settings from the cloud. Powerful remote tools provide network-wide visibility and control, and enable administration without on-site networking expertise.

Cloud services deliver seamless firmware and security signature updates, automatically establish site-to-site VPN tunnels, and provide 24x7 network monitoring. Moreover, the MX's browser-based management dashboard completely eliminates the need for training.



Cisco Meraki Cloud Management Architecture

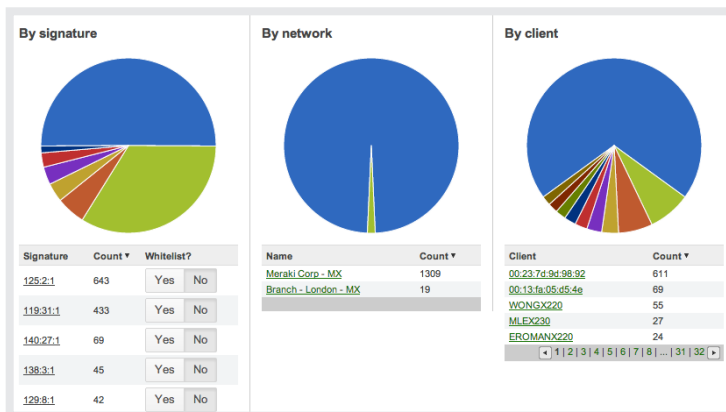
Ironclad Security for Edge Networks

The MX hardware platform is purpose-built for Layer 7 deep packet inspection, with advanced security features including IPS, content filtering, web search filtering, anti-virus / anti-phishing, and IPsec VPN connectivity, while providing the throughput and capacity for modern, bandwidth-intensive networks.

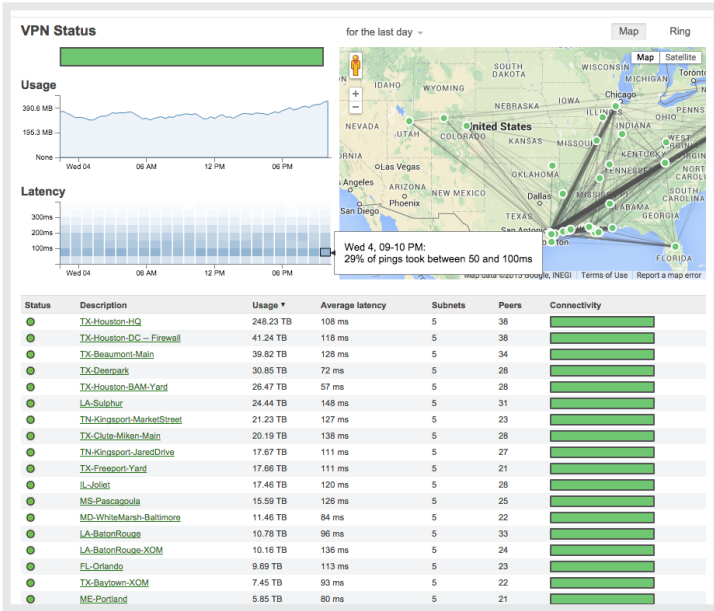
Layer 7 fingerprinting technology lets administrators identify unwanted content and applications and prevent recreational apps like BitTorrent from wasting precious bandwidth.

The integrated Sourcefire SNORT® engine delivers superior intrusion prevention coverage, a key requirement for PCI 3.0 compliance. The MX also uses the Webroot® URL categorization database for CIPA / IWF compliant content-filtering, Kaspersky® engine for anti-virus / anti-phishing filtering, and MaxMind for geo-IP based security rules

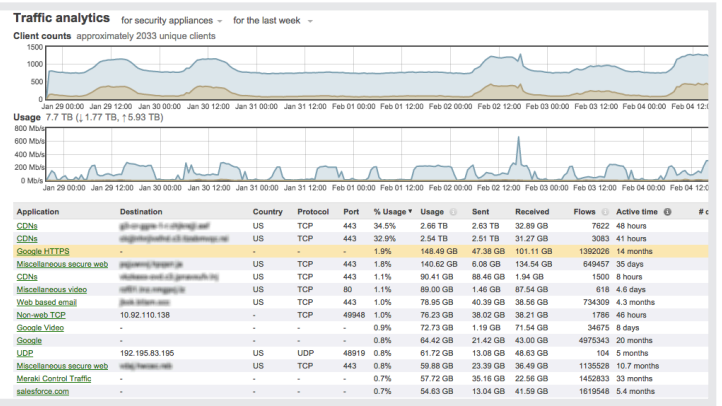
Best of all, these industry-leading Layer 7 security engines and signatures are always kept up-to-date via the cloud, simplifying network security management and providing peace-of-mind to IT administrators.



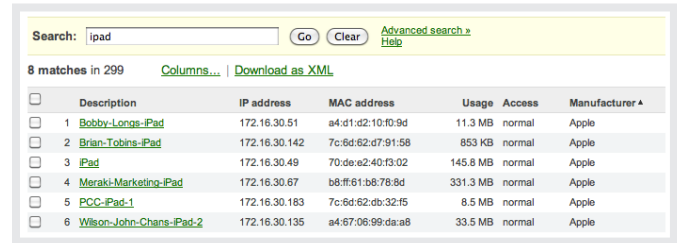
Organization Level Threat Assessment



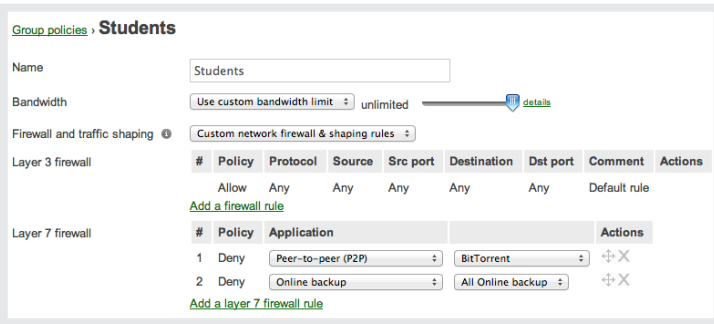
Auto Configuring Site-to-Site VPN



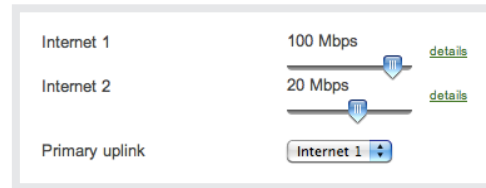
Next Gen Application Firewall and Traffic Visibility



User and Device Fingerprints



Identity Based Policy Management



Link Bonding and Failover

Intelligent WAN Made Simple

Transport independence:

Dual WAN ports with load balancing and failover enable the use of MPLS and redundant, commodity Internet connections, providing additional bandwidth and higher reliability.

3G / 4G failover:

The Cisco Meraki MX supports 3G/4G service providers globally for WAN connection failover. Web caching temporarily stores video, media, and web documents, lowering bandwidth usage and accelerating the download speed of Internet content.

Application optimization:

Layer 7 traffic shaping, application prioritization optimize the traffic for mission-critical applications and user experience.

Intelligent path control*:

Use Performance-based-Routing to choose the best uplink based on latency or packet loss. Define policies for sending the right traffic through the appropriate path (e.g., send voice via MPLS, http via VPN over broadband).

Secure connectivity:

Cisco Meraki's unique auto provisioning site-to-site VPN (Auto VPN) connects branches securely with complete simplicity. Using AES 128-bit encryption, the MX Security Appliances automatically configure VPN parameters needed to establish and maintain VPN sessions. A unique cloud-enabled discovery mechanism enables automatic interconnection of VPN peers and routes across the WAN, and keeps them updated in dynamic IP environments.

*Available calendar Q2 2015

MX64W with 802.11ac Wireless

The MX64W integrates Cisco Meraki's award-winning wireless technology with the powerful MX network security features in a compact form factor ideal for branch offices or small enterprises:

- Dual-band 802.11n/ac, 2x2 MIMO with 2 spatial streams
- Unified management of network security and wireless
- Integrated enterprise security and guest access



MX64W Security Appliance

Z1 Telecommuter Gateway



Z1 Telecommuter Gateway

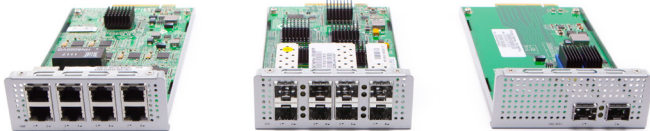
The Z1 Telecommuter Gateway extends the power of the Cisco Meraki dashboard and cloud-based centralized management to employees, IT staff and executives working from home.

Using the patent-pending Cisco Meraki Auto VPN, Administrators can extend network services including VoIP and remote desktop (RDP) to remote employees with a single-click, provide wired and wireless access, and increase end-user productivity through Layer 7 traffic shaping and prioritization.

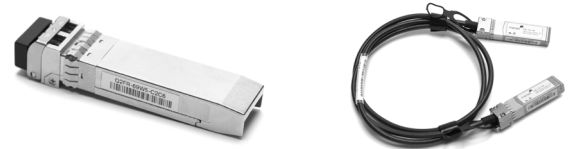
- 1 x 802.11b/g/n radio, 1 x 802.11a/n radio, 2x2 MIMO with 2 spatial streams
- Site-to-site (IPsec) VPN using Cisco Meraki Auto VPN
- Layer 7 application visibility and traffic shaping

Accessories

The Cisco Meraki MX100, MX400, and MX600 models support pluggable optics for high-speed backbone or link aggregation connections between wiring closets or to aggregation switches. Cisco Meraki offers several standards-based Gigabit and 10 Gigabit pluggable modules. Each appliance has also been tested for compatibility with several third-party modules.



Interface Modules for MX400 and MX600



Pluggable (SFP) Optics for MX100, MX400, MX600

Accessories / Optics

Supported Cisco Meraki accessory modules for MX100, MX400 and MX600.







MODEL	DESCRIPTION
IM-8-CU-1GB	Cisco Meraki 8 x 1 GbE Copper Interface Module for MX400 and MX600
IM-8-SFP-1GB	Cisco Meraki 8 x 1 GbE SFP Interface Module for MX400 and MX600
IM-2-SFP-10GB	Cisco Meraki 2 x 10 GbE SFP+ Interface Module for MX400 and MX600
MA-SFP-1GB-SX	Cisco Meraki 1 GbE SFP SX Fiber Module (1000BASE-SX, range: 550m)
MA-SFP-10GB-SR	Cisco Meraki 10 GbE Short Range SFP+ Module (10GBASE-SR, range: 400m)
MA-CBL-TA-1M	Cisco Meraki 10 GbE Twinax Cable with SFP+ Connectors (10GSFP+Cu, range: 1m)

Note: Please refer to meraki.com for additional single-mode and multi-mode fiber transceiver modules

Lifetime Warranty with Next-day Advanced Replacement

Cisco Meraki MX appliances include a limited lifetime hardware warranty that provides next-day advance hardware replacement. Cisco Meraki's simplified software and support licensing model also combines all software upgrades, centralized systems management, and phone support under a single, easy-to-understand model. For complete details, please visit meraki.cisco.com/support.

Product Options

	MX64 	MX64W 	MX80 	MX100 	MX400 	MX600 
Recommended use cases	Small retail branch, small clinic	Small retail branch, small clinic	Medium sized branch	Large branch	K-12 firewall / VPN concentrator	Large K-12 firewall, VPN concentrator
Recommended max users	50	50	100	500	2,000	10,000
Stateful Firewall Throughput	100 Mbps	100 Mbps	250 Mbps	500 Mbps	1 Gbps	2 Gbps
Advanced Security Throughput	50 Mbps	50 Mbps	125 Mbps	250 Mbps	325 Mbps	650 Mbps
Maximum VPN sessions	25	25	50	250	2,000	5,000
Interfaces	5 x GbE	5 x GbE	5 x GbE	9 x GbE 2 x GbE (SFP)	4 x GbE	4 x GbE
Additional Interface Modules	N/A	N/A	N/A	N/A	8 x GbE (RJ45) 8 x GbE (SFP) 4 x 10GbE (SFP+) (2 modules max)	8 x GbE (RJ45) 8 x GbE (SFP) 4 x 10GbE (SFP+) (2 modules max)
Web Caching	N/A	N/A	Yes	Yes	Yes	Yes
Hard Drive*	N/A	N/A	1 TB	1 TB	1 TB	4 x 1 TB (RAID)
USB for 3G/4G Failover	Yes	Yes	Yes	Yes	Yes	Yes
Mounting	Desk / Wall	Desk / Wall	1U rack	1U rack	1U rack	2U rack
Dimensions	9.5" x 5.2" x 1" (239mm x 132mm x 25mm)	9.5" x 5.2" x 1" (239mm x 132mm x 25mm)	19.0" x 10.0" x 1.75" (483 mm x 254 mm x 44 mm)	19.0" x 10.0" x 1.75" (483 mm x 254 mm x 44 mm)	19.0" x 22.0" x 1.75" (483 mm x 559 mm x 44 mm)	19.0" x 22.0" x 3.5" (483 mm x 559 mm x 89 mm)
Weight	3.04 lb (1.4 kg)	3.04 lb (1.4 kg)	8 lb (3.6kg)	9 lb (4.1kg)	33 lb (15.0 kg)	53 lb (24.0 kg)
Power Supply	18W DC (included)	18W DC (included)	100-220V 50/60Hz AC	100-220V 50/60Hz AC	100-220V 50/60Hz AC (dual)	100-220V 50/60Hz AC (dual)
Power Load (idle/max)	4W / 10W	6W / 13W	26W / 32W	30W / 55W	123W / 215W	132W / 226W
Operating Temperature	32°F to 104°F (0°C to 40°C)	32°F to 104°F (0°C to 40°C)	32°F to 104°F (0°C to 40°C)	32°F to 104°F (0°C to 40°C)	32°F to 104°F (0°C to 40°C)	32°F to 104°F (0°C to 40°C)
Humidity	5% to 95%	5% to 95%	5% to 95%	5% to 95%	5% to 95%	5% to 95%

*Note: Hard drive is used for web caching.

Specifications

Management

Managed via the web using the Cisco Meraki dashboard

Single pane-of-glass into managing wired and wireless networks

Zero-touch remote deployment (no staging needed)

Automatic firmware upgrades and security patches

Templates based multi-network management

Org-level two-factor authentication and single sign-on

Role based administration with change logging and alerts

Monitoring and Reporting

Throughput, connectivity monitoring and email alerts

Detailed historical per-port and per-client usage statistics

Application usage statistics

Org-level change logs for compliance and change management

VPN tunnel and latency monitoring

Network asset discovery and user identification

Periodic emails with key utilization metrics

Syslog integration

Remote Diagnostics

Live remote packet capture

Real-time diagnostic and troubleshooting tools

Aggregated event logs with instant search

Network and Security Services

Stateful firewall, 1:1 NAT, DMZ

Identity-based policies

Auto VPN: Automated site-to-site (IPsec) VPN, for hub-and-spoke or mesh topologies

Client (IPsec L2TP) VPN

Multiple WAN IP, PPPoE, NAT

VLAN support and DHCP services

Static routing

User and device quarantine

WAN Performance Management

Web caching

WAN link aggregation

Automatic Layer 3 failover (including VPN connections)

3G / 4G USB modem failover

Application level (Layer 7) traffic analysis and shaping

Ability to choose WAN uplink based on traffic type

Note: Web caching is not available on the MX64 or MX64W models.

Advanced Security Services

Content filtering (Webroot BrightCloud CIPA compliant URL database)

Web search filtering (including Google / Bing SafeSearch)

YouTube for Schools

Intrusion-prevention sensor (Sourcefire SNORT® based)

Anti-virus engine and anti-phishing filtering (Kaspersky SafeStream II engine)

Geography based firewall rules (MaxMind Geo-IP database)

Note: Advanced security services require Advanced Security license.

Integrated Wireless (MX64W)

1 x 802.11a/n/ac (5 GHz) radio

1 x 802.11b/g/n (2.4 GHz) radio

Max data rate 1.2 Gbit/s (aggregate)

2 x 2 MIMO with two spatial streams

2 external dual-band dipole antennas (connector type: RP-SMA)

Antenna gain: 3.0 dBi @ 2.4 GHz, 3.5 dBi @ 5 GHz

WEP, WPA, WPA2-PSK, WPA2-Enterprise with 802.1X authentication

Regulatory: FCC (US), IC (Canada), CE (Europe), C-Tick (Australia/New Zealand), RoHS

Note: Integrated wireless is only available on the MX64W model.

Regulatory

FCC (US)

CB (IEC)

CISPR (Australia/New Zealand)

Warranty

Full lifetime hardware warranty with next-day advanced replacement included.

Ordering Guide

To place an order for an MX appliance, pair a specific hardware model with a single license (which includes cloud services, software upgrades and support). For example, to order an MX64 with 3 years of Advanced Security license, order an MX64-HW with LIC-MX64-SEC-3YR. Lifetime warranty with advanced replacement is included on all hardware at no additional cost.

MODEL	LICENSE	DESCRIPTION
MX64-HW	LIC-MX64-ENT-1YR	Cisco Meraki MX64, 1 year Enterprise License and Support
	LIC-MX64-ENT-3YR	Cisco Meraki MX64, 3 year Enterprise License and Support
	LIC-MX64-ENT-5YR	Cisco Meraki MX64, 5 year Enterprise License and Support
	LIC-MX64-SEC-1YR	Cisco Meraki MX64, 1 year Advanced Security License and Support
	LIC-MX64-SEC-3YR	Cisco Meraki MX64, 3 year Advanced Security License and Support
	LIC-MX64-SEC-5YR	Cisco Meraki MX64, 5 year Advanced Security License and Support
MX64W-HW	LIC-MX64W-ENT-1YR	Cisco Meraki MX64W, 1 year Enterprise License and Support
	LIC-MX64W-ENT-3YR	Cisco Meraki MX64W, 3 year Enterprise License and Support
	LIC-MX64W-ENT-5YR	Cisco Meraki MX64W, 5 year Enterprise License and Support
	LIC-MX64W-SEC-1YR	Cisco Meraki MX64W, 1 year Advanced Security License and Support
	LIC-MX64W-SEC-3YR	Cisco Meraki MX64W, 3 year Advanced Security License and Support
	LIC-MX64W-SEC-5YR	Cisco Meraki MX64W, 5 year Advanced Security License and Support
MX80-HW	LIC-MX80-ENT-1YR	Cisco Meraki MX80, 1 year Enterprise License and Support
	LIC-MX80-ENT-3YR	Cisco Meraki MX80, 3 year Enterprise License and Support
	LIC-MX80-ENT-5YR	Cisco Meraki MX80, 5 year Enterprise License and Support
	LIC-MX80-SEC-1YR	Cisco Meraki MX80, 1 year Advanced Security License and Support
	LIC-MX80-SEC-3YR	Cisco Meraki MX80, 3 year Advanced Security License and Support
	LIC-MX80-SEC-5YR	Cisco Meraki MX80, 5 year Advanced Security License and Support
MX100-HW	LIC-MX100W-ENT-1YR	Cisco Meraki MX100W, 1 year Enterprise License and Support
	LIC-MX100W-ENT-3YR	Cisco Meraki MX100W, 3 year Enterprise License and Support
	LIC-MX100W-ENT-5YR	Cisco Meraki MX100W, 5 year Enterprise License and Support
	LIC-MX100W-SEC-1YR	Cisco Meraki MX100W, 1 year Advanced Security License and Support
	LIC-MX100W-SEC-3YR	Cisco Meraki MX100W, 3 year Advanced Security License and Support
	LIC-MX100W-SEC-5YR	Cisco Meraki MX100W, 5 year Advanced Security License and Support
MX400-HW	LIC-MX400-ENT-1YR	Cisco Meraki MX400, 1 year Enterprise License and Support
	LIC-MX400-ENT-3YR	Cisco Meraki MX400, 3 year Enterprise License and Support
	LIC-MX400-ENT-5YR	Cisco Meraki MX400, 5 year Enterprise License and Support
	LIC-MX400-SEC-1YR	Cisco Meraki MX400, 1 year Advanced Security License and Support
	LIC-MX400-SEC-3YR	Cisco Meraki MX400, 3 year Advanced Security License and Support
	LIC-MX400-SEC-5YR	Cisco Meraki MX400, 5 year Advanced Security License and Support
MX600-HW	LIC-MX600W-ENT-1YR	Cisco Meraki MX600W, 1 year Enterprise License and Support
	LIC-MX600W-ENT-3YR	Cisco Meraki MX600W, 3 year Enterprise License and Support
	LIC-MX600W-ENT-5YR	Cisco Meraki MX600W, 5 year Enterprise License and Support
	LIC-MX600W-SEC-1YR	Cisco Meraki MX600W, 1 year Advanced Security License and Support
	LIC-MX600W-SEC-3YR	Cisco Meraki MX600W, 3 year Advanced Security License and Support
	LIC-MX600W-SEC-5YR	Cisco Meraki MX600W, 5 year Advanced Security License and Support

*Note: For each MX product, additional 7 or 10 year Enterprise or Advanced Security licensing options are also available (ex: LIC-MX100-SEC-7YR).