



INDOOR AIR QUALITY

PRODUCT CATALOG



airkinglimited.com



Table of Contents

FAN SELECTION GUIDE

Selecting Your Fan Page 3

ASHRAE 62.2 Solutions

Total Home Solutions Pages 4 - 5

ENERGY STAR® CERTIFIED EXHAUST FANS

D Series Exhaust Fans Pages 6 - 7

EV Series Variable Speed Exhaust Fans Pages 8 - 9

E Series Exhaust Fans Pages 10 - 11

AKLS Series Deluxe Quiet Exhaust Fans Pages 12 - 13

AK Series Quiet Exhaust Fans Pages 14 - 15

BFC Series Quiet Exhaust Fans Pages 16 - 17

BFQ Series Snap-In Exhaust Fans Pages 18 - 21

EXHAUST FANS WITH LIGHTS

AKL Series Exhaust Fans with Light Pages 22 - 23

DRLC Series Decorative Exhaust Fans with Light Pages 24 - 25

EXHAUST FANS

AS Series Economical Exhaust Fans Pages 26 - 27

FIRE RATED EXHAUST FANS (UL263, UL555C)

FR Series Fire Rated Exhaust Fans Pages 28 - 31

COMBINATION HEATERS

Combination Heaters Pages 32 - 33

COMMERCIAL EXHAUST FANS

AKZA Series Inline Exhaust Fans Page 35

AK Series Exhaust Fans Page 36

EXHAUST FAN CONTRACTOR PACKS

Exhaust Fan Contractor Packs Page 37

EXHAUST FAN ACCESSORIES

Exhaust Fan Accessories Page 38

FRESH AIR SUPPLY

QFAM / FAS Series Page 40

MQFAM / MFAS Series Page 41

Motorized Damper Page 42

Fresh Air Accessories Page 43

PRODUCT SPECIFICATIONS

Specifications Pages 46 - 47





Fan Selection

Air King offers a wide array of ventilation solutions including ENERGY STAR® certified, ASHRAE 62.2 options, fans to be used to comply with California Title 24 requirements, as well as UL555C and UL263 Fire Rated options to fit almost any residential application. Selecting the perfect Air King ventilation fan for your requirements can be done through the following considerations:

Determine Your CFM

CFM (Cubic Feet Per Minute) is the amount of air the fan is exhausting. Use the following equation to calculate the required CFM for a typical bathroom installation:

$$\text{Room Length} \times \text{Room Width} \times 1.1 = \text{Required CFM}$$



Choose The Sound Level (Sones)

The next consideration is the sound level which is measured in Sones. The lower the sone, the quieter the fan. A fan under one sone is considered very quiet. The sound level will have a direct impact on the cost of the fan - the lower the sound, typically the higher the price. Air King is unique in offering many products that are very quiet while still being budget friendly.

Choose Your Features

Features include humidity control, lights, decorative grills, heaters, dual speed fans and more. Determine if you will need any of these features for your application and choose a fan accordingly.

Special Consideration

Before selecting any fan, you should consult all national and local codes to determine if any specialized requirements exist. Many municipalities have codes in place for CFM, Sones and efficiency.



ASHRAE 62.2 Total Home Solutions

Solving for ASHRAE 62.2 ventilation standards can be confusing. This guide is designed to help you choose the best solution for your specific installation. The information provided is to be used as a guide. All local codes need to be adhered to.

Air King offers multiple solutions to:

- Meet the budget of the project.
- Provide the proper ventilation for the size of the home.
- Meet specifications and codes concerning energy usage and sound.
- Allow for interchangeable models if more or less ventilation is needed.

Depending on the home and the location, the ASHRAE 62.2 requirements can be complied with in multiple ways. The following charts provides various solutions depending on where you want to place the continuous - whole house exhaust fan. The chart is for homes under 4,200 square feet with up to 4 bedrooms and 2.5 baths. For larger homes, contact your sales representative.



ASHRAE 62.2

Master Bath System

Continuous ventilation is located in the master bath and is a dual speed fan operating at a low speed for continuous ventilation then boosting to high speed when occupied.

Pros: Simple installation, typically the lowest cost way to meet the minimum requirements.

Cons: Not as effective as other systems, especially if doors are closed, can bring stale air through main living area, sound level can be a factor.



Master Bath System	Standard	ENERGY STAR® Certified	ENERGY STAR® Certified Humidity Sensing*
Continuous - Master Bath	AK100D	EVD	EVDH
Local - Full Bath	BFQ90	BFC90	BFC90H
Local - Powder Room	AS54	BFQ50	BFQ50
Local - Kitchen	AV1303	ESQZ2303	ESQZ2303
Local - Laundry	AS54	BFQ50	BFQ50
Fresh Air	F130D	QFAMD	QFAMD

* Humidity sensing for Master Bathroom, Full Bathroom and Fresh Air Intake

Central System

Continuous ventilation is located in a central location of the home.

Pros: Effective way to meet ventilation requirements, lower cost than other systems.

Cons: Requires an extra fan and installation, sound level can be a factor.



Central System	Standard	ENERGY STAR® Certified	ENERGY STAR® Certified Humidity Sensing*
Continuous - Central	AK80LS-1	E80S	E80S
Local - Master Bath	BFC90	E130S	E130SH
Local - Full Bath	BFQ90	BFC90	BFC80H
Local - Powder Room	AS54	BFQ50	BFQ50
Local - Kitchen	AV1303	ESQZ2303	ESQZ2303
Local - Laundry	AS54	BFQ50	BFQ50
Fresh Air	F130D	QFAMD	QFAMD

* Humidity sensing for Master Bathroom, Full Bathroom and Fresh Air Intake

Kitchen System

Continuous ventilation is located in the kitchen.

Pros: Most effective way to meet ventilation requirements, places the continuous ventilation at the main source of contamination.

Cons: Not all homes have the ability to vent the range hood to the outdoors.



Kitchen System	Standard	ENERGY STAR® Certified	ENERGY STAR® Certified Humidity Sensing*
Local - Master Bath	BFC100	E130S	E130SH
Local - Full Bath	BFQ90	BFC90	BFC90H
Local - Powder Room	AS54	BFQ50	BFQ50
Continuous - Kitchen	ECQ303	ECQ303	ECQ303
Local - Laundry	AS54	BFQ50	BFQ50
Fresh Air	F130D	QFAMD	QFAMD

* Humidity sensing for Master Bathroom, Full Bathroom and Fresh Air Intake





D Series

DC MOTOR EXHAUST FANS

Air King's ENERGY STAR® certified D4 and DL4 series exhaust fans combine industry leading efficiency with barely audible sound levels to deliver effective ventilation to your home. Perfect for master bathrooms as well as for use to solve for ASHRAE 62.2 whole dwelling requirements.





D Series



HUMIDITY SENSING MODELS (D4SH, D4DH, DL4SH)

Integrated humidistat senses the humidity level of the room and turns the fan on or to high speed until the humidity level is below the preset level. Can be set up to 80% RH.

- **ENERGY STAR® Certified**

- Energy efficient DC motor maintains CFM ratings across multiple static pressures and is suitable for continuous operation
- Solution for **ASHRAE 62.2** continuous whole house ventilation
Ventilation calculation: (Total sq. ft. of home/100) + ((# of bedrooms+1) x 7.5 cfm)
 For best fan selection round the min ventilation # up to the nearest 0 - ex. 45 CFM should be rounded up to 50 CFM
- 6" Round duct connector with gasketed damper protects against backdrafts and seals the duct better than any other damper on the market today
- Listed for installation over a tub or shower on a GFCI circuit
- Hanger bar installation

MODEL	CFM RANGE @ .1 SP	SONES @ .1 SP	CFM RANGE @ .25 SP	MAX. FAN WATTS	SPEEDS	LIGHTING	HUMIDITY SENSOR	LISTING	ASHRAE 62.2	TITLE 24	DUCT SIZE	HOUSING SIZE
D4S	40 - 130	<0.3 - 0.4	36 - 121	8.0	Single	N/A	NO	ETL	Whole House/Local	YES	6"	12 ⁷ / ₈ "W x 12 ³ / ₄ "D x 9 ⁵ / ₈ "H
D4D	40 - 120	<0.3 - 0.3	36 - 121	7.3	Dual	N/A	NO	ETL	Whole House/Local	YES	6"	12 ⁷ / ₈ "W x 12 ³ / ₄ "D x 9 ⁵ / ₈ "H
D4SH	40 - 130	<0.3 - 0.4	36 - 121	8.0	Single	N/A	YES	ETL	Whole House/Local	YES	6"	12 ⁷ / ₈ "W x 12 ³ / ₄ "D x 9 ⁵ / ₈ "H
D4DH	40 - 120	<0.3 - 0.3	36 - 121	7.3	Dual	N/A	YES	ETL	Whole House/Local	YES	6"	12 ⁷ / ₈ "W x 12 ³ / ₄ "D x 9 ⁵ / ₈ "H





EV Series

VARIABLE SPEED EXHAUST FANS

Air King's ENERGY STAR® certified variable speed ECO exhaust fans put CFM control in your hands while combining efficiency with barely audible sound levels to deliver effective ventilation to your home. Perfect for master bathrooms as well as for use to solve for ASHRAE 62.2 whole dwelling requirements.



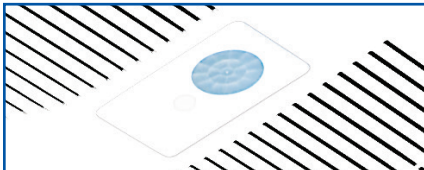


EV Series



HUMIDITY SENSING MODELS (EVDH, EVLDH, EVDGH, EVDLGH)

Integrated humidistat senses the humidity level of the room and turns the fan to high speed until the humidity level is below the preset level. Can be set up to 80% RH.



MOTION SENSING MODELS (EVDGH, EVDLGH)

Integrated motion sensor detects occupancy of the room and turns the fan to high speed for the preset time after the room is vacated before automatically turning the fan back to low speed. Timer can be set from 30 seconds to 80 minutes.

- **ENERGY STAR® Certified**

- Solution for **ASHRAE 62.2** continuous whole house ventilation

Ventilation calculation: (Total sq. ft. of home/100) + ((# of bedrooms+1) x 7.5 cfm)

For best fan selection round the min ventilation # up to the nearest 0 - ex. 45 CFM should be rounded up to 50 CFM

- 8 capacity settings on low speed allow the fan to be set to the required continuous ventilation rate. Low speed set points include: 30, 40, 50, 60, 70, 90, 100 and 120 CFM
- High speed rapidly clears the air of moisture, odors or other contaminants
High speed set points include: 80, 110, 130 and Boost
- Boost speed provides extra ventilation for installation with higher static pressure and ensures airflow requirements are met when used to comply with ASHRAE 62.2
- 6" Round duct connector with gasketed damper protects against backdrafts and seals the duct better than any other damper on the market today
- Listed for installation over a tub or shower on a GFCI circuit
- Hanger bar installation
- **EVL SERIES:** LED lamp **INCLUDED**

MODEL	CFM @ .1 SP	SONES @ .1 SP	BOOST SPEED			MAX. FAN WATTS	LIGHTING	HUMIDITY SENSOR	MOTION SENSOR	LISTING	ASHRAE 62.2	TITLE 24	DUCT SIZE	HOUSING SIZE
			CFM @ .1 SP	SONES @ .1 SP	CFM @ .25 SP									
EVD	30 - 130	<0.3	150	0.6	113	37.0	N/A	NO	NO	ETL	Whole House/Local	YES	6"	12 ⁷ / ₈ "W x 12 ³ / ₄ "D x 9 ⁷ / ₈ "H
EVLD	30 - 130	<0.3	150	0.6	112	37.0	LED	NO	NO	ETL	Whole House/Local	YES	6"	12 ⁷ / ₈ "W x 12 ³ / ₄ "D x 9 ⁷ / ₈ "H
EVDGH	30 - 130	<0.3	150	0.6	113	37.0	N/A	YES	YES	ETL	Whole House/Local	YES	6"	12 ⁷ / ₈ "W x 12 ³ / ₄ "D x 9 ⁷ / ₈ "H
EVLDGH	30 - 130	<0.3	150	0.6	112	37.0	LED	YES	YES	ETL	Whole House/Local	YES	6"	12 ⁷ / ₈ "W x 12 ³ / ₄ "D x 9 ⁷ / ₈ "H
EVDH	30 - 130	<0.3	150	0.6	113	37.0	N/A	YES	NO	ETL	Whole House/Local	YES	6"	12 ⁷ / ₈ "W x 12 ³ / ₄ "D x 9 ⁷ / ₈ "H
EVLDH	30 - 130	<0.3	150	0.6	112	37.0	LED	YES	NO	ETL	Whole House/Local	YES	6"	12 ⁷ / ₈ "W x 12 ³ / ₄ "D x 9 ⁷ / ₈ "H





E Series

ECO-EXHAUST FANS

Air King's ENERGY STAR® certified ECO exhaust fans combine efficiency with barely audible sound levels to deliver effective ventilation to your home. Perfect for bathrooms, laundry rooms and other areas of the home needing ventilation.





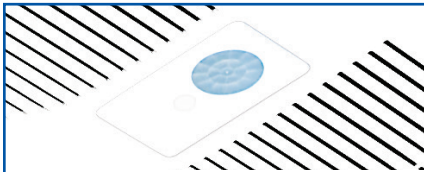
E Series



HUMIDITY SENSING MODELS

(E80SH, E130SH, E80SGH, E130SGH, EL80SGH, EL130SGH)

Integrated humidistat senses the humidity level of the room and turns the fan on until the humidity level is below the preset level. Can be set up to 80% RH.



MOTION SENSING MODELS

(E80SGH, E130SGH, EL80SGH, EL130SGH)

Integrated motion sensor detects occupancy of the room and turns the fan on for the preset time after the room is vacated before automatically turning the fan off. Timer can be set from 30 seconds to 80 minutes.

- **ENERGY STAR® Certified**
- Solution for **ASHRAE 62.2** continuous whole house ventilation
Ventilation calculation: (Total sq. ft. of home/100) + ((# of bedrooms+1) x 7.5 cfm)
 For best fan selection round the min ventilation # up to the nearest 0 - ex. 45 CFM should be rounded up to 50 CFM
- Boost speed provides extra ventilation for installation with higher static pressure and ensures airflow requirements are met when used to comply with ASHRAE 62.2
- 6" Round duct connector with gasketed damper protects against backdrafts and seals the duct better than any other damper on the market today
- Listed for installation over a tub or shower on a GFCI circuit
- Hanger bar installation
- **EL SERIES:** LED lamp **INCLUDED**

MODEL	CFM @ .1 SP	SONES @ .1 SP	BOOST SPEED			MAX. FAN WATTS	LIGHTING	HUMIDITY SENSOR	MOTION SENSOR	LISTING	ASHRAE 62.2	TITLE 24	DUCT SIZE	HOUSING SIZE
			CFM @ .1 SP	SONES @ .1 SP	CFM @ .25 SP									
E80S	80	<0.3	110	0.7	84	37.0	N/A	NO	NO	ETL	Whole House/Local	YES	6"	12 ⁵ / ₈ "W x 12 ³ / ₄ "D x 9 ⁷ / ₈ "H
E110S	110	<0.3	150	0.6	111	37.0	N/A	NO	NO	ETL	Whole House/Local	YES	6"	12 ⁵ / ₈ "W x 12 ³ / ₄ "D x 9 ⁷ / ₈ "H
E130S	130	<0.3	150	0.7	113	37.0	N/A	NO	NO	ETL	Whole House/Local	YES	6"	12 ⁵ / ₈ "W x 12 ³ / ₄ "D x 9 ⁷ / ₈ "H
E80SH	80	<0.3	110	0.7	84	37.0	N/A	YES	NO	ETL	Whole House/Local	YES	6"	12 ⁵ / ₈ "W x 12 ³ / ₄ "D x 9 ⁷ / ₈ "H
E130SH	130	<0.3	150	0.7	113	37.0	N/A	YES	NO	ETL	Whole House/Local	YES	6"	12 ⁵ / ₈ "W x 12 ³ / ₄ "D x 9 ⁷ / ₈ "H
E80SGH	80	<0.3	110	0.7	84	37.0	N/A	YES	YES	ETL	Whole House/Local	YES	6"	12 ⁵ / ₈ "W x 12 ³ / ₄ "D x 9 ⁷ / ₈ "H
E130SGH	130	<0.3	150	0.7	113	37.0	N/A	YES	YES	ETL	Whole House/Local	YES	6"	12 ⁵ / ₈ "W x 12 ³ / ₄ "D x 9 ⁷ / ₈ "H
EL80SGH	80	<0.3	110	0.6	87	37.0	LED	YES	YES	ETL	Whole House/Local	YES	6"	12 ⁵ / ₈ "W x 12 ³ / ₄ "D x 9 ⁷ / ₈ "H
EL130SGH	130	<0.3	150	0.6	112	37.0	LED	YES	YES	ETL	Whole House/Local	YES	6"	12 ⁵ / ₈ "W x 12 ³ / ₄ "D x 9 ⁷ / ₈ "H





AKLS Series

DELUXE QUIET EXHAUST FANS

Air King's ENERGY STAR® certified deluxe quiet exhaust fans provide quiet ventilation solutions for your bathroom, laundry room or other areas of the home needing powerful energy efficient and effective ventilation.





AKLS Series



HUMIDITY SENSING MODELS (AK80LS6H, AK100LS6H)

Integrated humidistat senses the humidity level of the room and turns the fan on until the humidity level is below the preset level. Can be set up to 80% RH.

- **ENERGY STAR® Certified**
- Solutions for **ASHRAE 62.2** continuous whole house ventilation or local ventilation (models with a sone rating of 1.0 or below can be used for whole house ventilation)
- Round duct connector with damper protects against backdrafts
- Listed for installation over a tub or shower on a GFCI circuit
- Hanger bar installation

MODEL	CFM @ .1 SP	CFM @ .25 SP	SONES @ .1 SP	MAX. FAN WATTS	SPEEDS	LIGHTING	HUMIDITY SENSOR	LISTING	ASHRAE 62.2	TITLE 24	DUCT SIZE	HOUSING SIZE
AK150LS	150	118	0.9	37.0	Single	N/A	NO	UL	Local	YES	6"	12 ⁷ / ₈ "W x 12 ³ / ₄ "D x 9 ⁷ / ₈ "H
AK200LS	200	183	1.2	57.0	Single	N/A	NO	UL	Local	YES	6"	12 ⁷ / ₈ "W x 12 ³ / ₄ "D x 9 ⁷ / ₈ "H
AK280LS	280	257	3.0	65.7	Single	N/A	NO	UL	Local	YES	6"	12 ⁷ / ₈ "W x 12 ³ / ₄ "D x 9 ⁷ / ₈ "H
AK80LS6	80	57	0.5	25.2	Single	N/A	NO	UL	Whole House/Local	YES	6"	10 ⁷ / ₈ "W x 9 ³ / ₈ "D x 7 ⁷ / ₈ "H
AK90LS6	90	65	0.8	25.7	Single	N/A	NO	UL	Whole House/Local	YES	6"	10 ⁷ / ₈ "W x 9 ³ / ₈ "D x 7 ⁷ / ₈ "H
AK100LS6	100	78	1.0	26.6	Single	N/A	NO	UL	Whole House/Local	YES	6"	10 ⁷ / ₈ "W x 9 ³ / ₈ "D x 7 ⁷ / ₈ "H
AK110LS6	110	99	1.4	29.0	Single	N/A	NO	UL	Local	YES	6"	10 ⁷ / ₈ "W x 9 ³ / ₈ "D x 7 ⁷ / ₈ "H
AK80LS6H	80	57	0.5	25.2	Single	N/A	YES	UL	Whole House/Local	YES	6"	10 ⁷ / ₈ "W x 9 ³ / ₈ "D x 7 ⁷ / ₈ "H
AK100LS6H	100	78	1.0	26.6	Single	N/A	YES	UL	Whole House/Local	YES	6"	10 ⁷ / ₈ "W x 9 ³ / ₈ "D x 7 ⁷ / ₈ "H
AK80LS	80	61	0.7	25.9	Single	N/A	NO	UL	Whole House/Local	YES	4"	10 ⁷ / ₈ "W x 9 ³ / ₈ "D x 7 ⁷ / ₈ "H
AK110LS	110	90	1.5	28.5	Single	N/A	NO	UL	Local	YES	4"	10 ⁷ / ₈ "W x 9 ³ / ₈ "D x 7 ⁷ / ₈ "H





AK Series

QUIET EXHAUST FANS

Air King's ENERGY STAR® certified exhaust fans provide quiet, effective and efficient ventilation solutions for local and national codes across the country. Perfect for bathrooms, laundry rooms or other areas of the home needing ventilation.





AK Series



- **ENERGY STAR® Certified**
- Solutions for **ASHRAE 62.2** continuous whole house ventilation or local ventilation (models with a sone rating of 1.0 or below can be used for whole house ventilation)
- Round duct connector with damper protects against backdrafts
- Listed for installation over a tub or shower on a GFCI circuit
- Hanger bar installation
- Select models available in contractor packs (see page 38 for details)
- **LEDAK SERIES:** Moonstone glass light lens with **INCLUDED** LED lamp

MODEL	CFM @ .1 SP	CFM @ .25 SP	SONES @ .1 SP	MAX. FAN WATTS	SPEEDS	LIGHTING	HUMIDITY SENSOR	LISTING	ASHRAE 62.2	TITLE 24	DUCT SIZE	HOUSING SIZE
AK50S	50	40	0.5	14.5	Single	N/A	NO	UL	Whole House/Local	YES	4"	10 1/8"W x 9 3/8"D x 7 7/8"H
AK80LS-1	80	68	1.0	28.1	Single	N/A	NO	UL	Whole House/Local	YES	4"	10 1/8"W x 9 3/8"D x 7 7/8"H
AK80	80	68	1.5	27.6	Single	N/A	NO	UL	Local	YES	4"	10 1/8"W x 9 3/8"D x 7 7/8"H
AK80H	80	68	1.0	28.1	Single	N/A	YES	UL	Whole House/Local	YES	4"	10 1/8"W x 9 3/8"D x 7 7/8"H
AK90	90	75	1.5	25.4	Single	N/A	NO	UL	Local	YES	4"	10 1/8"W x 9 3/8"D x 7 7/8"H
AK110PN	100	83	2.0	26.4	Single	N/A	NO	UL	Local	YES	4"	10 1/8"W x 9 3/8"D x 7 7/8"H
AK100H	100	83	2.0	26.4	Single	N/A	YES	UL	Local	YES	4"	10 1/8"W x 9 3/8"D x 7 7/8"H
AK100D	50 / 100	83	0.4 / 2.0	26.4	Dual	N/A	NO	UL	Whole House/Local	YES	4"	10 1/8"W x 9 3/8"D x 7 7/8"H
LEDAK50	50	35	0.3	16.0	Single	LED	NO	UL	Whole House/Local	YES	4"	10 1/8"W x 9 3/8"D x 7 7/8"H
LEDAK80	80	67	1.2	27.6	Single	LED	NO	UL	Local	YES	4"	10 1/8"W x 9 3/8"D x 7 7/8"H
LEDAK100	100	83	2.0	26.5	Single	LED	NO	UL	Local	YES	4"	10 1/8"W x 9 3/8"D x 7 7/8"H
LEDAK100H	100	83	2.0	26.5	Single	LED	YES	UL	Local	YES	4"	10 1/8"W x 9 3/8"D x 7 7/8"H
LEDAK100D	50 / 100	83	0.4 / 2.0	26.5	Dual	LED	NO	UL	Local	YES	4"	10 1/8"W x 9 3/8"D x 7 7/8"H





BFC Series

QUIET EXHAUST FANS

Air King's ENERGY STAR® certified BFC exhaust fan provides a quiet, efficient and cost effective solution for ASHRAE 62.2 whole dwelling ventilation. Perfect for bathrooms, laundry rooms or other areas of the home needing ventilation.





BFC Series



HUMIDITY SENSING MODELS (BFC90H, BFC100H)

Integrated humidistat senses the humidity level of the room and turns the fan on until the humidity level is below the preset level. Can be set up to 80% RH.

- **ENERGY STAR® Certified**

- Perfect solution for **ASHRAE 62.2** continuous whole house ventilation or local ventilation
- Round duct connector with metal damper protects against backdrafts
- Listed for installation over a tub or shower on a GFCI circuit
- Hanger bar installation



PERFECT ASHRAE 62.2 SOLUTION

One of the **LOWEST COST** continuous operation solutions on the market today

90 CFM provides whole house ventilation for homes up to 4,500 square feet
100 CFM provides whole house ventilation for homes up to 5,500 square feet

Compact size and low profile grill make the fan hardly noticeable

MODEL	CFM @ .1 SP	CFM @ .25 SP	SONES @ .1 SP	MAX. FAN WATTS	SPEEDS	LIGHTING	HUMIDITY SENSOR	LISTING	ASHRAE 62.2	TITLE 24	DUCT SIZE	HOUSING SIZE
BFC90	90	75	1.0	19.0	Single	N/A	NO	ETL	Whole House/Local	YES	4"	9"W x 9"D x 7 ⁷ / ₈ "H
BFC90H	90	75	1.0	19.0	Single	N/A	YES	ETL	Whole House/Local	YES	4"	9"W x 9"D x 7 ⁷ / ₈ "H
BFC100	100	85	1.0	22.3	Single	N/A	NO	ETL	Whole House/Local	YES	4"	9"W x 9"D x 7 ⁷ / ₈ "H
BFC100H	100	85	1.0	19.0	Single	N/A	YES	ETL	Whole House/Local	YES	4"	9"W x 9"D x 7 ⁷ / ₈ "H





BFQ Series

SNAP-IN INSTALLATION EXHAUST FANS

Air King's high performance Snap-In installation exhaust fans provide effective and economical ventilation with easy Snap-In installation. Perfect for powder rooms, bathrooms, laundry rooms or other areas of the home needing ventilation.





BFQ Series

- **Models BFQ50 and BFQ75 are ENERGY STAR® Certified**
- Solutions for **ASHRAE 62.2** continuous whole house ventilation or local ventilation (Whole house ventilation: BFQ50, Local exhaust: BFQ70, BFQ80, BFQ90)
- 4" Round duct connector with damper protects against backdrafts
- UL Listed high-impact plastic housing will not rust or corrode over time and is listed for installation over a tub or shower on a GFCI circuit
- Installs using the included SNAP-IN mounting system with wire nuts and a romex connector included and can be wall mounted in 2" x 6" construction
- Select models available in contractor packs (see page 38 for details)

SNAP-IN INSTALLATION



NAIL the included bracket in place.

SNAP the naturally sound absorbent molded plastic housing into the bracket.

WIRE the fan with the included wire nuts and strain relief.

Attach the ducting and **YOU'RE DONE!**

MODEL	CFM @ .1 SP	CFM @ .25 SP	SONES @ .1 SP	MAX. FAN WATTS	SPEEDS	LIGHTING	2" x 4" STUD MOUNT	LISTING	ASHRAE 62.2	TITLE 24	DUCT SIZE	HOUSING SIZE
BFQ50	50	36	0.6	17.4	Single	N/A	NO	UL	Whole House/Local	YES	4"	9 1/8"W x 8 1/16"D x 4 3/4"H
BFQ75	70	55	2.0	23.5	Single	N/A	NO	UL	Local	YES	4"	9 1/8"W x 8 1/16"D x 4 3/4"H
BFQ80	80	66	2.0	29.0	Single	N/A	NO	UL	Local	NO	4"	9 1/8"W x 8 1/16"D x 4 3/4"H
BFQ90	90	-	3.0	50.0	Single	N/A	NO	UL	Local	NO	4"	9 1/8"W x 8 1/16"D x 4 3/4"H
BFQ110	100	-	3.5	72.5	Single	N/A	NO	UL	-	NO	4"	9 1/8"W x 8 1/16"D x 4 3/4"H
BFQ140	120	-	5.0	97.0	Single	N/A	NO	UL	-	NO	4"	9 1/8"W x 8 1/16"D x 4 3/4"H





BFQW Series

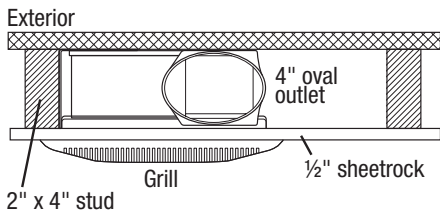
- **ENERGY STAR® Certified**

- Solutions for **ASHRAE 62.2** continuous whole house ventilation or local ventilation (models with a sone rating of 1.0 or below can be used for whole house ventilation)
- 4" Oval duct connector with damper protects against backdrafts
- UL Listed high-impact plastic housing will not rust or corrode over time and is listed for installation over a tub or shower on a GFCI circuit
- Installs using the included SNAP-IN mounting system with wire nuts and a romex connector included and can be wall mounted in 2" x 4" construction



BFQW SERIES

- Can be wall mounted into standard 2" x 4" studs.



SNAP-IN INSTALLATION



NAIL the included bracket in place.

SNAP the naturally sound absorbent molded plastic housing into the bracket.

WIRE the fan with the included wire nuts and strain relief.

Attach the ducting and **YOU'RE DONE!**

MODEL	CFM @ .1 SP	CFM @ .25 SP	SONES @ .1 SP	MAX. FAN WATTS	SPEEDS	LIGHTING	2" x 4" STUD MOUNT	LISTING	ASHRAE 62.2	TITLE 24	DUCT SIZE	HOUSING SIZE
BFQ70W	70	56	1.5	22.3	Single	N/A	NO	UL	Local	YES	4"	9 1/8"W x 8 1/16"D x 3 1/8"H





BFQL Series

- **ENERGY STAR® Certified**

- Solutions for **ASHRAE 62.2** continuous whole house ventilation or local ventilation (models with a sone rating of 1.0 or below can be used for whole house ventilation)
- 4" Round duct connector with damper protects against backdrafts
- UL Listed high-impact plastic housing will not rust or corrode over time and is listed for installation over a tub or shower on a GFCI circuit
- Installs using the included SNAP-IN mounting system with wire nuts and a romex connector included
- LED lamp **INCLUDED**

LED
LAMP INCLUDED

SNAP-IN INSTALLATION



NAIL the included bracket in place.

SNAP the naturally sound absorbent molded plastic housing into the bracket.

WIRE the fan with the included wire nuts and strain relief.

Attach the ducting and **YOU'RE DONE!**

MODEL	CFM @ .1 SP	CFM @ .25 SP	SONES @ .1 SP	MAX. FAN WATTS	SPEEDS	LIGHTING	2" x 4" STUD MOUNT	LISTING	ASHRAE 62.2	TITLE 24	DUCT SIZE	HOUSING SIZE
BFQL50	50	39	0.8	17.8	Single	LED	NO	UL	Whole House/Local	YES	4"	9 1/8"W x 8 1/2"D x 5 3/4"H
BFQL70	70	58	2.0	22.6	Single	LED	NO	UL	Local	YES	4"	9 1/8"W x 8 1/2"D x 5 3/4"H





AKL Series

EXHAUST FANS with LIGHT

Air King's AKL series exhaust fans with light provide that perfect balance between performance and affordability. Fans can utilize up to a 100 watt incandescent light bulb. Perfect for larger bathrooms or other areas of the home needing ventilation and lighting.





AKL Series

Deluxe Series with Light (AK100L)

- Moonstone glass light lens disperses the light evenly throughout the room
- Utilizes up to a 100W medium base bulb or an equivalent energy efficient type bulb
- Plastic damper protects against backdrafts and ensures quiet operation
- Easily installs using the included adjustable hanging brackets

Deluxe Round Series with Light (AK863L)

- Round grill makes unit easier to visually center within the room
- Moonstone glass light lens disperses the light evenly throughout the room
- Utilizes up to a 100W medium base bulb or an equivalent energy efficient type bulb
- 7 watt night-light feature
- Plastic damper protects against backdrafts and ensures quiet operation
- Easily installs using the included adjustable hanging brackets

MODEL	CFM @ .1 SP	SONES @ .1 SP	MAX. FAN WATTS	SPEEDS	LIGHTING	LISTING	ASHRAE 62.2	DUCT SIZE	HOUSING SIZE
AK100L	100	2.5	37.0	Single	100W or equivalent*	UL	Local	4"	9 $\frac{3}{8}$ "W x 10 $\frac{7}{8}$ "D x 7 $\frac{1}{8}$ "H
AK863L	100	3.5	70.0	Single	100W or equivalent, 7W night light*	UL	-	4"	9 $\frac{1}{2}$ "W x 8 $\frac{1}{2}$ "D x 5 $\frac{3}{4}$ "H

* Bulbs not included



DRLC Series

DECORATIVE EXHAUST FANS

Air King's DRLC series decorative exhaust fans with light provide stylish and effective ventilation and are available in multiple finishes. Perfect for bathrooms or powder rooms.





DRLC Series

- Decorative grills and light lenses enhance the decor of your bathroom
- 13½" diameter round grill makes unit easier to visually center within the room
- Utilizes up to 2 - 60W medium base bulbs or equivalent energy efficient type bulbs
- Glass light lens disperses light throughout the room
- Plastic damper protects against backdrafts and ensures quiet operation
- Easily installs using the included adjustable hanging brackets
- Available finishes: Oil Rubbed Bronze
Nickel
White

MODEL	CFM @ .1 SP	SONES @ .1 SP	MAX. FAN WATTS	SPEEDS	FINISH	LIGHTING	LISTING	ASHRAE 62.2	DUCT SIZE	HOUSING SIZE
DRLC701	70	4.0	44.0	Single	Oil Rubbed Bronze	2 - 60W or equivalent*	UL	-	4"	7⅞"W x 7⅞"D x 5⅞"H
DRLC702	70	4.0	44.0	Single	Nickel	2 - 60W or equivalent*	UL	-	4"	7⅞"W x 7⅞"D x 5⅞"H
DRLC703	70	4.0	44.0	Single	White	2 - 60W or equivalent*	UL	-	4"	7⅞"W x 7⅞"D x 5⅞"H

* Bulbs not included





AS Series

ECONOMICAL EXHAUST FANS

Air King's economical exhaust fans offer budget friendly yet effective ventilation solutions. Perfect for smaller bathrooms as well as powder rooms and laundry rooms.





AS Series

Economic Exhaust Fans (AS50, AS70, AS54)

- Plastic damper protects against backdrafts and ensures quiet operation
- Easily installs using the double thick keyhole mounting tabs
- Available in contractor packs (see page 38 for details)

Economic Exhaust Fans with Light (ASLS50, ASLC70)

- Utilizes up to a 100W medium base bulb or an equivalent energy efficient type bulb
- Plastic damper protects against backdrafts and ensures quiet operation
- Easily installs using the double thick keyhole mounting tabs or included hanging brackets
- Available in contractor packs (see page 38 for details)

MODEL	CFM @ .1 SP	SONES @ .1 SP	MAX. FAN WATTS	SPEEDS	LIGHTING	LISTING	ASHRAE 62.2	DUCT SIZE	HOUSING SIZE
AS54	50	3.0	40.5	Single	-	UL	Local	4"	7 1/4"W x 7 1/4"D x 4 3/4"H
AS50	50	4.0	48.0	Single	-	UL	-	3"	7 1/4"W x 7 1/4"D x 3 3/4"H
AS70	70	5.5	50.0	Single	-	UL	-	3"	7 1/4"W x 7 1/4"D x 3 3/4"H
ASLC50	50	3.0	48.0	Single	100W or equivalent*	UL	-	4"	7 3/8"W x 7 3/8"D x 5 1/8"H
ASLC70	70	5.5	44.0	Single	100W or equivalent*	UL	-	4"	7 3/8"W x 7 3/8"D x 5 7/8"H

* Bulbs not included





FR Series

FIRE RATED EXHAUST FANS

Air King's fire rated exhaust fans are an effective solution when fire codes need to be met. All FR series exhaust fans are UL263 as well as UL555C classified and feature a damper with a 3 hour fire rating. Perfect for bathrooms as well as other areas of the home.





FR Series

UL263/UL555C
CLASSIFIED CLASSIFIED
for Wood Frame Construction

FIRE RATED EXHAUST FANS

Not all Fans are Created Equal

Life Safety Professionals work hard to develop and enforce building codes to eliminate or reduce potential threats. Nothing can be more frustrating and sometimes more costly than not having the correct product to comply with the building code for your project.

Wood is a Combustible Material

When you're building a multi-family residential project using wood frame construction you'll need to comply with stringent requirements to prevent the spread of fire. These are likely to include the use of fire rated products for ceiling penetrations such as bathroom exhaust fans. Air King Fire Rated Exhaust Fans have been tested and are UL and/or ETL Classified for use in wood frame construction and have been successfully tested in more designs than any major manufacturer.

You will see competitor certifications that will say "For use in any fire resistive floor or roof-ceiling assembly". That doesn't necessarily mean listed for wood frame construction. Wood construction is NOT fire resistive; wood is a combustible material that fire fighters usually consider fuel. The UL/ETL requirement for listing in this case requires mounting and testing of the fan in each approved design above an actual fire. You know you have the right product for the application when the manufacturer provides the design numbers for which the product was tested. No design number - Not UL/ETL Listed for wood frame construction.

Air King Fire Rated Fans, on the other hand, are UL and/or ETL Classified for the greatest number of wood frame designs at the time of this printing. Be sure you have the right product and save yourself a lot of time and trouble by starting with Air King.





FRAK Series



HUMIDITY SENSING MODELS (FRAK80H, FRAK100H)

Integrated humidistat senses the humidity level of the room and turns the fan on until the humidity level is below the preset level. Can be set up to 80% RH.



FIRE DAMPER

Non-asbestos, ceramic blanket with a replaceable fusible link, 165°F standard with a 3 hour rating

- **ENERGY STAR® Certified**

- Solutions for **ASHRAE 62.2** continuous whole house ventilation or local ventilation (models with a sone rating of 1.0 or below can be used for whole house ventilation)
- Three part system that includes a housing, motor/blade/grill and damper
- 4" Round spring loaded metal damper protects against backdrafts
- Available in single packs or in contractor packs of 4
- Low profile and durable, all metal grill with a painted, white finish
- Easily installs using the included adjustable hanging brackets
- Listed as fan/damper assembly for the following Wood Frame design numbers:

ETL Classified UL263/E119:

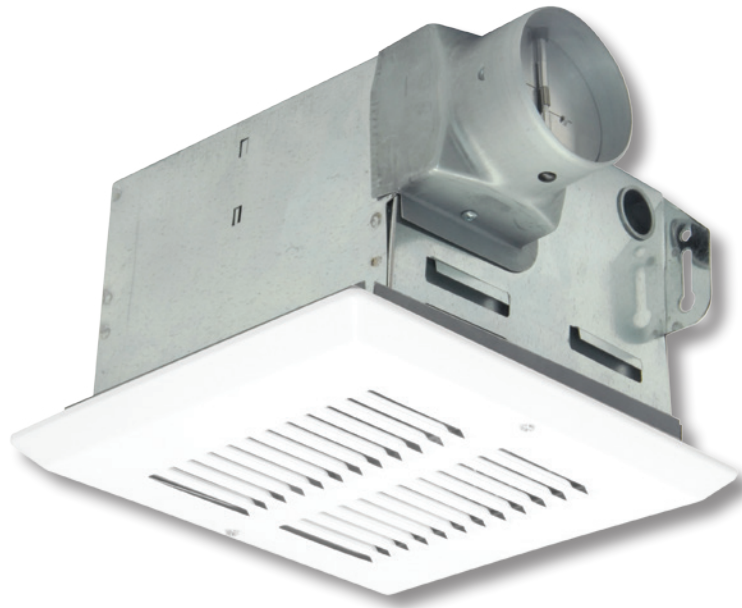
L501, L502, L503, L506, L507, L508, L512, L513, L514, L515, L516, L517, L519, L521, L522, L523, L528, L530, L533, L537, L545, L546, L550, L562, L563, L570, L574, L579, L581, L583, L585, L586, M503, M530, M538, P522, P531, P538, P545, P552

cULus:

L501, L502, L503, L506, L507, L508, L512, L513, L514, L515, L516, L517, L519, L522, L523, L533, L537, L545, L581, L583, M530, M538

MODEL	CFM @ .1 SP	CFM @ .25 SP	SONES @ .1 SP	MAX. FAN WATTS	SPEEDS	CONTRACTOR PACK (MOTOR/HOUSING/DAMPER)	LISTING	ASHRAE 62.2	TITLE 24	DUCT SIZE	HOUSING SIZE
FRAK50S	50	39	0.6	16.0	Single	FAK50T / AKFH2 / AKFD2	UL	Whole House/Local	YES	4"	10 1/4"W x 9 1/4"D x 7 1/8"H
FRAK80	80	68	1.0	28.1	Single	FAK80T / AKFH2 / AKFD2	UL	Whole House/Local	YES	4"	10 1/4"W x 9 1/4"D x 7 1/8"H
FRAK80H	80	68	1.0	28.1	Single	FAK80T / AKFH2H / AKFD2	UL	Whole House/Local	YES	4"	10 1/4"W x 9 1/4"D x 7 1/8"H
FRAK90	90	73	1.5	26.0	Single	FAK90T / AKFH2 / AKFD2	UL	Local	YES	4"	10 1/4"W x 9 1/4"D x 7 1/8"H
FRAK100	100	82	2.0	27.5	Single	FAK100T / AKFH2 / AKFD2	UL	Local	YES	4"	10 1/4"W x 9 1/4"D x 7 1/8"H
FRAKV	30-100	82	<0.3 - 2.0	26.4	Single	N/A	UL	Whole House/Local	YES	4"	10 1/4"W x 9 1/4"D x 7 1/8"H





FRAS Series

- Three part system that includes a housing, motor/blade/grill and damper
- Available in single packs or in contractor packs of 4
- Low profile and durable, all metal grill with a painted, white finish
- Easily installs using the included adjustable hanging brackets
- Listed as fan/damper assembly for the following Wood Frame design numbers:

ETL Classified UL263/E119:

L501, L502, L503, L506, L507, L508, L512, L513, L514, L515, L516, L517, L519, L521, L522, L523, L528, L530, L533, L537, L545, L546, L550, L562, L563, L570, L574, L579, L581, L583, L585, L586, M503, M530, M538, P522, P531, P538, P545, P552

cULus:

L501, L502, L503, L506, L507, L508, L512, L513, L514, L515, L516, L517, L519, L522, L523, L533, L537, L545, L581, L583, M530, M538



FIRE DAMPER

Non-asbestos, ceramic blanket with a replaceable fusible link, 165°F standard with a 3 hour rating

MODEL	CFM @ .1 SP	CFM @ .25 SP	SONES @ .1 SP	MAX. FAN WATTS	SPEEDS	CONTRACTOR PACK (MOTOR/HOUSING/DAMPER)	LISTING	ASHRAE 62.2	TITLE 24	DUCT SIZE	HOUSING SIZE
FRAS50	50	39	3.0	48.0	Single	FA50T / AKFH1 / AKFD1	UL	-	NO	3"	7 ⁷ / ₈ "W x 7 ¹⁵ / ₁₆ "D x 5 ⁷ / ₈ "H
FRAS70	70	59	4.0	50.0	Single	FA70T / AKFH1 / AKFD1	UL	-	NO	3"	7 ⁷ / ₈ "W x 7 ¹⁵ / ₁₆ "D x 5 ⁷ / ₈ "H





HEATERS

COMBINATION HEATERS

Air King's combination heaters provide effective ventilation as well as supplemental heat for bathrooms. All functions can be wired to operate independently.





HEATER Series



Ceramic Heater Element

The ceramic heating element produces heat by passing current through a self regulating ceramic heating element. The element adjusts itself to the surface temperature, regulating it to produce a constant heat. As air is passed through the element, it will adjust to maintain the temperature.

Combination Ceramic Heaters (Heat/Light/Vent)

- Self-regulating ceramic heating element provides 1,350 watts of safe ceramic warmth
- Able to be installed on a 15 amp circuit
- Utilizes up to a 100W medium base bulb or an equivalent energy efficient type bulb
- Glass light lens
- Available in contractor pack (see page 38 for details)

Deluxe Combination Heaters (Heat/Light/Night Light/Vent)

- Control switches are included with the unit
- Utilizes up to a 100W medium base bulb or an equivalent energy efficient type bulb
- Glass light lens
- Easily installs using the included adjustable hanging brackets

Bulb Heater With Exhaust Fan

- Rated type IC for ceiling insulated to R-40
- Utilizes 250 watt maximum type R40 medium base infrared lamp (lamp not included)
- Easily installs using the included adjustable hanging brackets

MODEL	CFM @ .1 SP	SONES @ .1 SP	MAX. FAN WATTS	SPEEDS	HEATING ELEMENT	LIGHTING	LISTING	ASHRAE 62.2	DUCT SIZE	HOUSING SIZE
AK55L	70	5.0	54.0	Single	1,350W Ceramic	100W or equivalent*	UL	-	4"	14½"W x 8¾"D x 6½"H
AK965L	70	3.5	51.0	Single	1,500W NiChrome Wire	100W or equivalent, 7W night light*	UL	-	4"	14½"W x 8¾"D x 6½"H
AK917	70	3.5	51.0	Single	250W Bulb	250W Heat Bulb*	UL	-	4"	8"W x 8"D x 5¾"H

* Bulbs not included

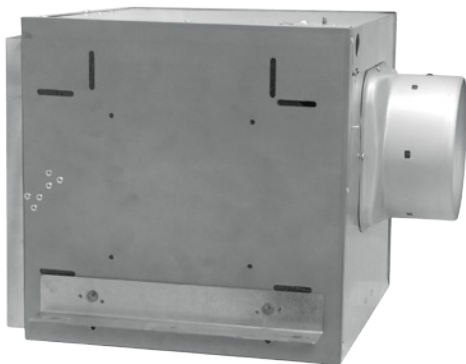


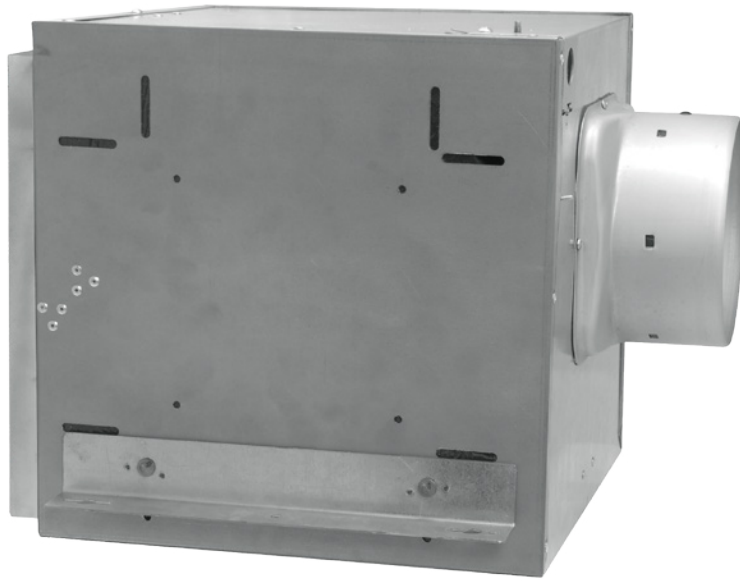


COMMERCIAL

HIGH VELOCITY EXHAUST FANS

Air King's commercial high velocity exhaust fans provide effective ventilation for commercial settings with exhaust as well as inline options available. Perfect for settings such as restaurants bathrooms, locker rooms and more.



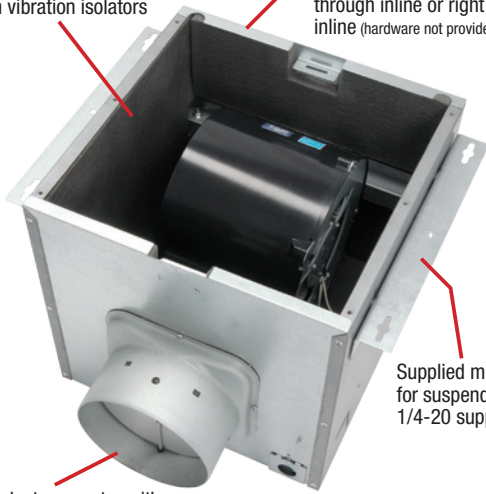


AKZA Series

- Balanced polymeric dual inlet blower wheel
- Enclosed 4 pole high efficiency, permanently split capacitor motor (PSC); life time lubrication, suitable for continuous operation
- 23 gauge galvanized steel housing with 1" acoustic insulation
- Easy wiring access via either internal or external wiring compartment cover
- Unit mounts with the 2 supplied housing mounting angles that can be adapted for inline or top discharge mounting (hardware not provided)
- 6" Round duct connector with gasketed damper protects against backdrafts and seals the duct better than any other damper on the market today
- Convertible to 6" round inlet with model IA613R adapter (available separately)

Insulated housing with motors & blowers mounted on vibration isolators

Can be adapted for top discharge mounting, straight through inline or right angle inline (hardware not provided)



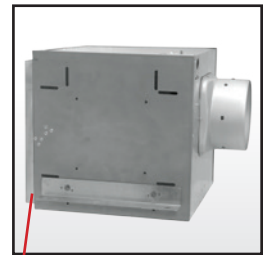
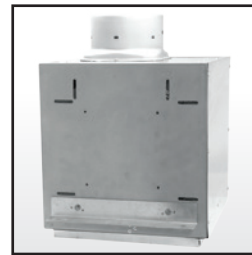
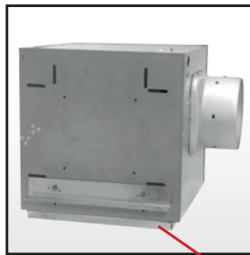
Supplied mounting angles for suspended ceilings using 1/4-20 support rod

6" duct connector with gasketed, spring loaded aluminum backdraft damper

Inline Side (right angle)

Inline Vertical

Inline Horizontal



Mounting flange for inline duct connection

MODEL	CFM @ 0.2 SP	MAX. FAN WATTS	SPEEDS	ENERGY STAR	GRILL	LISTING	DUCT SIZE	INLET	OPTIONAL INLET ADAPTER	HOUSING SIZE
AKZA150	120	34.4	Single	NO	N/A	ETL	6"	10 ¹ / ₁₆ " x 10 ⁹ / ₁₆ "	IA613R - 6"	12 ¹ / ₁₆ "W x 13 ¹ / ₁₆ "D x 12 ⁹ / ₁₆ "H
AKZA200	210	55.0	Single	YES	N/A	ETL	6"	10 ¹ / ₁₆ " x 10 ⁹ / ₁₆ "	IA613R - 6"	12 ¹ / ₁₆ "W x 13 ¹ / ₁₆ "D x 12 ⁹ / ₁₆ "H
AKZA200D	200 / 80	60.3	Dual	YES	N/A	ETL	6"	10 ¹ / ₁₆ " x 10 ⁹ / ₁₆ "	IA613R - 6"	12 ¹ / ₁₆ "W x 13 ¹ / ₁₆ "D x 12 ⁹ / ₁₆ "H

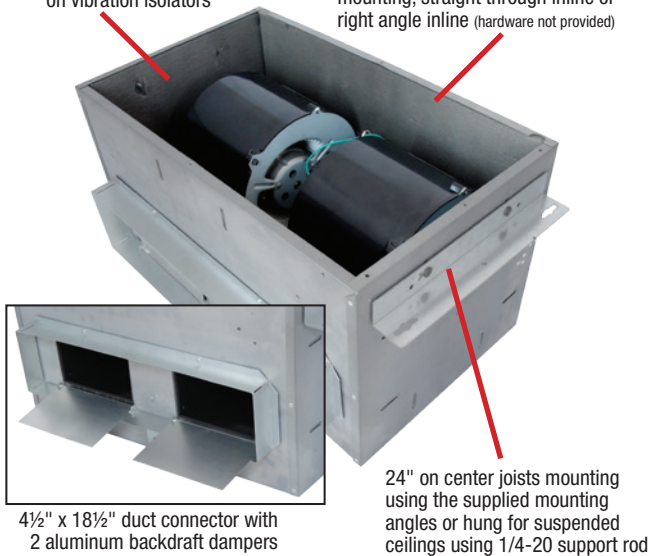




AK Series

Insulated housing with motors & blowers mounted on vibration isolators

Can be adapted for top discharge mounting, straight through inline or right angle inline (hardware not provided)



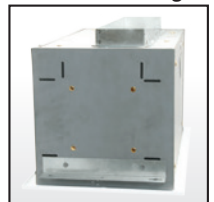
- Painted white, metal grill
- Uses forward curved non overloading polymeric blower wheels
- Easy service access through large removable access panel or through grill
- Convertible to inline with the addition of model IA418RE: 4½" x 18½" rectangular inlet adapter

MULTIPLE MOUNTING OPTIONS

Side Discharge

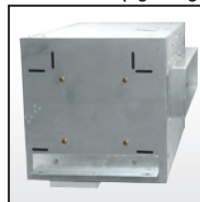


Vertical Discharge



CONVERTIBLE TO INLINE (inlet adapters sold separately)

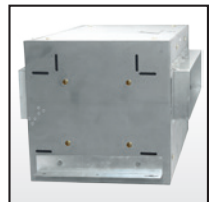
Inline Side (right angle)



Inline Vertical



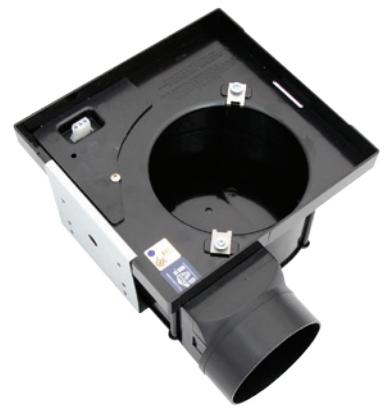
Inline Horizontal



4½" x 18½" duct connector with 2 aluminum backdraft dampers

24" on center joists mounting using the supplied mounting angles or hung for suspended ceilings using 1/4-20 support rod

MODEL	CFM @ 0.1 SP	CFM @ 0.25 SP	SONES @ 0.1 SP	MAX. FAN WATTS	ENERGY STAR	GRILL	LISTING	DUCT SIZE	OPTIONAL INLINE CONVERSION PLATE	HOUSING SIZE
AK300	300	237	0.8	69.5	YES	Metal	ETL	4½" x 18½"	IA418RE	21½"W x 12¾"D x 12¾"H
AK400	420	381	1.5	119.0	NO	Metal	ETL	4½" x 18½"	IA418RE	21½"W x 12¾"D x 12¾"H
AK600	620	575	4.5	175.0	NO	Metal	ETL	4½" x 18½"	IA418RE	21½"W x 12¾"D x 12¾"H

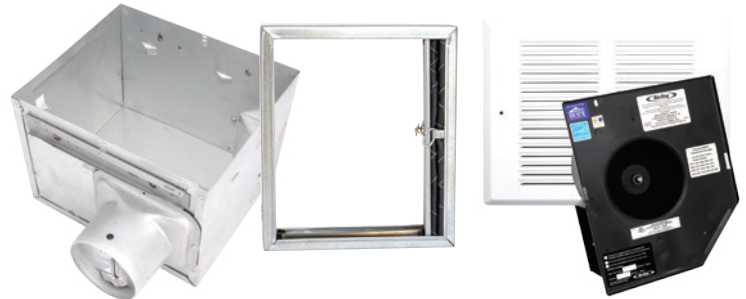


CONTRACTOR PACKS

Sold in bulk packs for larger projects, contractor packs allow the housing that is needed for rough-in installation to be sent first. Then after the interior is completed, the internal workings of the unit (motor/blade/grill) can be received and installed.

HOUSINGS	MOTOR/ BLADE/GRILL	#PER PACK	CFM/ SONES	DUCT SIZE	SINGLE PACK MODEL #	SINGLE PACK PAGE
AKLS6 SERIES						
AK-2A6	AK80LS6T	4	80/0.5	6" plastic	AK80LS6	13
	AK100LS6T	4	100/1.0	6" plastic	AK100LS6	13
AK-2A6H	AK80LS6T	4	80/0.5	6" plastic	AK80LS6H	13
	AK100LS6T	4	100/1.0	6" plastic	AK100LS6H	13
AK SERIES						
AKX-1A	AK80LS1T	4	80/1.0	4" plastic	AK80LS-1	15
	AK80MBG	4	80/1.5	4" plastic	AK80	15
	AK90MBG	4	90/1.5	4" plastic	AK90	15
	AK110PNT	4	100/2.0	4" plastic	AK110PN	15
AKX-1HA	AK80LS1T	4	80/1.0	4" plastic	AK80H	15
	AK90MBG	4	90/1.5	4" plastic	AK90H	15
	AK110PNT	4	100/2.0	4" plastic	AK100H	15
BFQ SERIES						
BFQHSG	BFQ50T	4	50/0.6	4" plastic	BFQ50	19
	BFQ75T	4	70/2.0	4" plastic	BFQ75	19
	BFQ80T	4	80/2.0	4" plastic	BFQ80	19
	BFQ90MBG	4	90/3.0	4" plastic	BFQ90	19
	BFQ110MBG	4	100/3.5	4" plastic	BFQ110	19
BFQ140MBG	BFQ140MBG	4	120/5.0	4" plastic	BFQ140	19
	BFQ2HSG	BFQ50T	4	50/0.8	4" plastic	BFQ50W
BFQ75T	BFQ75T	4	70/2.0	4" plastic	BFQ70W	20
	BFQLHSG	BFQL50T	4	50/0.8	4" plastic	BFQL50
BFQL70T	BFQL70T	4	70/2.0	4" plastic	BFQL70	21
	AS SERIES					
ASLC12HSG	ASLC50MBG	12 / 4	50/3.0	4" plastic	ASLC50	27
	ASLC70MBG	12 / 4	70/4.0	4" plastic	ASLC70	27
ASHSG	AS50MBG	6	50/4.0	3" plastic	AS50	27
	AS70MBG	6	70/5.5	3" plastic	AS70	27
ATL18HSG	AS50MBG	18 / 6	50/3.0	4" plastic	AS54	27
	AS70MBG	18 / 6	70/5.5	4" plastic	N/A	27
COMBINATION CERAMIC HEATERS						
AK55LHSG	AK55LT	1	70/5.0	4" metal	AK55L	33

FIRE RATED Series



HOUSINGS	MOTOR/ BLADE/GRILL	DAMPER	#PER PACK	CFM/ SONES	DUCT SIZE	SINGLE PACK MODEL #	SINGLE PACK PAGE
ENERGY STAR CERTIFIED FIRE RATED SERIES							
AKFH2	FAK50ST	AKFD2	4	50/0.6	4" metal	FRAK50S	30
	FAK80T	AKFD2	4	80/1.0	4" metal	FRAK80	30
	FAK90T	AKFD2	4	90/1.5	4" metal	FRAK90	30
	FAK100T	AKFD2	4	100/2.0	4" metal	FRAK100	30
AKFH2D	FAK100DT	AKFD2	4	100/2.0	4" metal	FRAK100D	X
ENERGY STAR CERTIFIED FIRE RATED SERIES with HUMIDITY SENSOR							
AKFH2H	FAK50T	AKFD2	4	50/0.6	4" metal	FRAK50H	X
	FAK80T	AKFD2	4	80/1.0	4" metal	FRAK80H	30
	FAK90T	AKFD2	4	90/1.5	4" metal	FRAK90H	X
	FAK100T	AKFD2	4	100/2.0	4" metal	FRAK100H	30
AKFH2DH	FAK100DT	AKFD2	4	100/2.0	4" metal	FRAK100DH	X
FIRE RATED SERIES							
AKFH1	FA50T	AKFD1	4	50/3.0	3" metal	FRAS50	31
	FA70T	AKFD1	4	70/5.0	3" metal	FRAS70	31

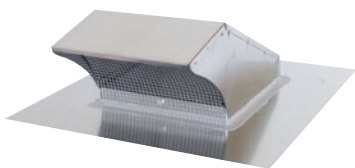
X Model only available in contractor pack





EXHAUST ACCESSORIES

ROOF CAPS

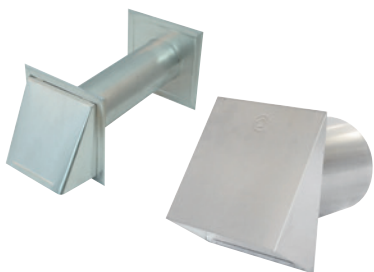


PRC10R: Galvanized steel roof cap with bird screen and damper, accepts 10" round ducting

PRC8R: Galvanized steel roof cap with bird screen and damper, accepts 8" round ducting

PRC6R: Galvanized steel roof cap with bird screen and damper, accepts 6" round ducting

WALL CAPS



WC4NS: Aluminum wall cap with damper, 4" round ducting

PWC10R: Galvanized steel wall cap with damper, accepts 10" round ducting

PWC8R: Galvanized steel wall cap with damper, accepts 8" round ducting

PWC6R: Galvanized steel wall cap with damper, accepts 6" round ducting

DAMPERS



BDD4R: Metal back draft damper, 4" round ducting

BDD6R: Metal back draft damper, 6" round ducting

BDD8R: Metal back draft damper, 8" round ducting

HUMIDITY CONTROL



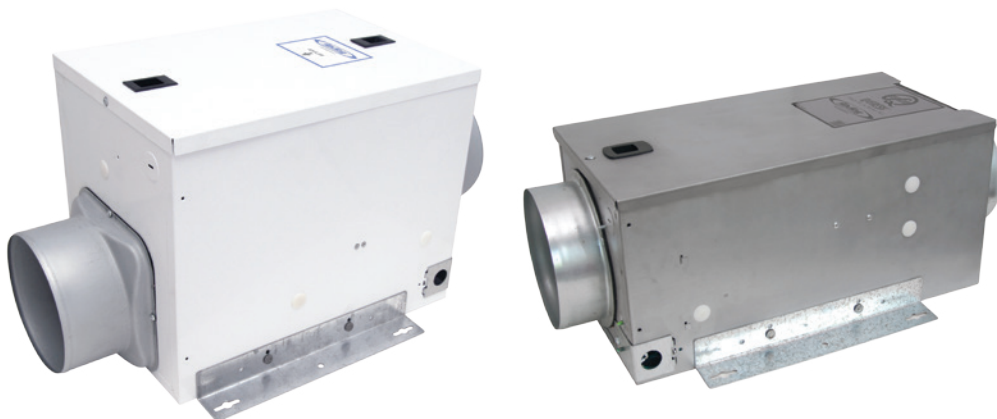
DH55: White, dehumidistat automatically turns the unit on/off according to the humidity level of the room and is easily adjusted to maximize the system. Can be used with most exhaust fans to comply with California *CALGreen*



FRESH AIR

FRESH AIR INTAKE

The Air King fresh air intake series offers home builders and developers a cost effective mechanical fresh air solution. Contractors and builders now have a practical offering for introducing constant fresh air from outside into the residence, meeting the fresh air CFM requirements. Q models include an internally mounted sensor with limits preventing the intake of outdoor air that is too humid, too hot, too cold or too dry.





QFAMD / F130D

QFAMD Controller



CONTINUOUS OPERATION MODE:

Unit will run continuously at the established CFM level as required by ASHRAE 62.2.

ENERGY SAVINGS MODE:

Internally mounted sensors provide limits preventing the intake of outdoor air that is too humid, too hot, too cold or too dry. The operator simply dials in the quantity (CFM) of outdoor air needed from the quiet energy efficient fan and sets the desired intake levels for the outside humidity and temperature.

INSTALLATION

- Designed to surface mount to a wall or ceiling with the included mounting brackets, connect power & ductwork, you're ready to go
- Inexpensive first cost method to bring in outdoor air using an independent fan
- No connection to HVAC system required
- Mount in basement, attic, equipment closet, laundry room, etc.
- 6" round duct connections for virtually unlimited duct length
- Suitable for single & multi-family projects

VERIFICATION

Includes easy access test port

COMPLIANT

- Component of ASHRAE 62.2 solution for outdoor air
- HVI Certified performance, ETL listed

FEATURES

- Accepts nominal 10" x 10" x 2" up to MERV 16 filter through easy access filter door (Models AF16102 - MERV 16 filter, AF13102 - MERV 13 filter and AF8102 - MERV 8 filters available separately)
- Nearly silent operation, homeowner may not even know it is operating
- Can be used with a timer switch
- Continuous operation and Energy Savings modes (QFAMD only)



MODEL	CFM @ .2 SP	MAX. FAN WATTS	ASHRAE 62.2	ENERGY STAR	CONTROLS	OPTIONAL FILTER	LISTING	DUCT SIZE	FAN FINISH	HOUSING SIZE
QFAMD	30 - 130	26.0	Outdoor Air	YES	Speed, Humidity, Temperature	MERV 8, 13, 16	ETL	6"	White Epoxy	14 ⁷ / ₈ "W x 10 ¹ / ₈ "D x 11 ¹ / ₂ "H
F130D	30 - 130	26.0	Outdoor Air	YES	Speed	MERV 8, 13, 16	ETL	6"	White Epoxy	14 ⁷ / ₈ "W x 10 ¹ / ₈ "D x 11 ¹ / ₂ "H





MQFAM / MFAS

MQFAM Series Controller



CONTINUOUS OPERATION MODE:

Unit will run continuously at the established CFM level as required by ASHRAE 62.2.

ENERGY SAVINGS MODE:

Internally mounted sensors provide limits preventing the intake of outdoor air that is too humid, too hot, too cold or too dry. The operator simply dials in the quantity (CFM) of outdoor air needed from the quiet energy efficient fan and sets the desired intake levels for the outside humidity and temperature.

INSTALLATION

- Designed to surface mount to a wall or ceiling with the included mounting brackets, connect power & ductwork, you're ready to go
- Inexpensive first cost method to bring in outdoor air using an independent fan
- No connection to HVAC system required
- Compact design fits nearly everywhere and is perfect for multi-family installations
- Mount in basement, attic, equipment closet, laundry room, etc.
- 6" round duct connections for virtually unlimited duct length
- Suitable for single & multi-family projects

VERIFICATION

Includes easy access test port

COMPLIANT

- Component of ASHRAE 62.2 solution for outdoor air
- HVI Certified performance, ETL listed

FEATURES

- Accepts nominal 8" x 9" x 2" up to MERV 13 filter through easy access filter door
(Models AF1382-2 - MERV 13 filter and AF882-2 - MERV 8 filters available separately)
- Nearly silent operation, homeowner may not even know it is operating
- Can be used with a timer switch
- Continuous operation and Energy Savings modes (MQFAM model only)

MODEL	CFM @ .2 SP	MAX. FAN WATTS	ASHRAE 62.2	ENERGY STAR	CONTROLS	OPTIONAL FILTER	LISTING	DUCT SIZE	FAN FINISH	HOUSING SIZE
MQFAM	50 or 80	82.9	Outdoor Air	NO	Speed, Humidity, Temperature	MERV 8, 13, 16	ETL	6"	Galvanized Steel	9"W x 17 ³ / ₈ "D x 8 ¹ / ₄ "H
MFAS	50 or 80	82.9	Outdoor Air	NO	Speed	MERV 8, 13, 16	ETL	6"	Galvanized Steel	9"W x 17 ³ / ₈ "D x 8 ¹ / ₄ "H





MOTORIZED DAMPER

MOTORIZED DAMPER CONNECTOR BOX



The QMDB allows the Air King MD624 motorized damper to be easily connected to an Air King Fresh Air unit. The box mounts directly to the Fresh Air unit and includes a wire harness to connect it directly to the electrical supply of the Fresh Air unit.

The MD624 motorized damper mounts inline with the ducting to Air King Fresh Air units. The lead wires from the unit connect to the included transformer that easily plugs into the receptacle of the QMDB. The single blade damper with an internal gasket tightly closes off ducting to minimize air leakage. When the Fresh Air unit is energized, the damper automatically opens, then closes when the main unit shuts off.

- Automatically opens when the QFAM or FAS is operating
- Tight sealing damper minimizes any air leakage
- Easily mounts inline with QFAM series or FAS series units
- Transformer and lead wire included
- Connection to QFAM series requires model QMDB (sold separately)

MODEL	POWER RATING	ENERGY STAR	FINISH	DAMPER	LEAD WIRES	CONNECTIONS	LISTING	DUCT SIZE	UNIT SIZE
MD624	24VAC, 60Hz, 6 watt	N/A	Galvanized Steel	Single blade with internal gasket	22 AWG, 12 inches	24 volt transformer	UL Recognized Component	6"	9 1/4"W x 6"D x 9"H





FRESH AIR ACCESSORIES

AIR FILTERS



An optional air filter can be added to the QFAM, FAS, QAKZA or FAKZA series units to filter out unwanted pollutants from entering the dwelling. Air filters need to be replaced on a regular basis dependent on usage and environment. Addition of the filter may cause a decrease in airflow. Adjustments can be made with the units airflow selector to compensate.

QFAMD / QFAM / FAS: **AF8102-2:** Nominal 10" x 10" x 2" MERV 8 filter (2 pack)

QAKZA, FAKZA **AF13102-2:** Nominal 10" x 10" x 2" MERV 13 filter (2 pack)

AF16102-2: Nominal 10" x 10" x 2" MERV 16 filter (2 pack)

MQFAM / MFAS: **AF882-2:** Nominal 9" x 8" x 2" MERV 8 filter (2 pack)

AF1382-2: Nominal 9" x 8" x 2" MERV 13 filter (2 pack)

HEATING UNIT



The QH series heating units provide a way to raise the temperature of air coming into the dwelling in colder climates. The unit attaches to the QFAM, QFAM16 or QFAMD and is controlled by the unit controller. The self regulating ceramic heating element is bonded to a large transfer surface that allows heating at a very low operating temperature. For use with Air King QFAM, QFAM16 and QFAMD models only.

QFAMD / QFAM: **QH400:** 400 watt, 120V, 60Hz. Total of 4.8 amps (including unit)

QH900: 900 watt, 120V, 60Hz. Total of 8.0 amps (including unit)

24 VOLT RELAY



The QR24 Relay provides a way to energize an Air King FAS, QFAM, MFAS, or MQFAM unit from a remote 24 volt signal. The relay mounts directly to the unit and includes a direct plug-in connection to the unit. For use with Air King Fresh Air units only.

QR24: 24 Volt Relay, 24VAC, 60 Hz, single pole 110V/15amp

120 VOLT RELAY



The R120 Relay provides a way to energize an Air King FAS unit from another FAS, QFAM, MFAS or MQFAM unit when needing to balance ventilation. The relay mounts directly to the Fresh Air unit and includes a direct plug-in connection to the unit. For use with Air King Fresh Air units only.

R120: 120 Volt Relay, 24VAC, 60 Hz, single pole 110V/15amp

INTAKE HOOD



IH6S: 6" screened intake wall cap for use with Fresh Air units and Fresh Air Intake Kits.



OFFER AN ENHANCED INDOOR AIR QUALITY SYSTEM



REMOVE
stale/contaminated indoor air
EXHAUST



REPLACE
with fresh/filtered outdoor air
AIR INTAKE



RE-THINK
look at the home as a whole
TOTAL HOME VENTILATION

Looking at the house as a whole

- What are you doing to ensure the indoor air quality of the homes you build or renovate?
- How are you currently solving for ASHRAE 62.2 continuous ventilation as well as local ventilation and fresh air?
- Are you setting yourself apart from your competition when it comes to indoor air quality?
- Are you using ENERGY STAR® certified exhaust fans in your homes?
- Would you be able to answer questions from the homeowner regarding indoor air quality?
- Do you know what in the home is causing contaminants and affecting the indoor air quality?
- Have homeowners complained that the entry level exhaust fans are too loud and don't do anything?
- Have you asked how the Air King Total Home Ventilation System can benefit you?





SYMBI HOME

DUPLEX ONE PROJECT HOME

Air King's is proud to be featured in the SYMBI Duplex One certified net zero ready homes in Mount Rainier, Maryland. Each unit offers 2,260 square feet of above-ground living space and 950 square feet of finished basement. The homes features "a multitude of upgrades in energy-efficiency, wellness, and technology". When it came to the kitchen ventilation "(Nicole) Tysvaer and (Matt) Kulp wanted the range hood to perform, but they also wanted it hidden. The solution: installing the Air King LE300A hood with continuous flow operation, which constantly exhausts stale air from the house." Air King ENERGY STAR® certified, humidity sensing exhaust fans are also used in the bathrooms of the unit. To learn more about the SYMBI Duplex one project visit: symbihomes.com/duplex-one



SPECIFICATIONS

MODEL	CFM	SONES	SOUND LEVEL	LIGHTING	ENERGY STAR	CALGREEN	ASHRAE 62.2	LISTING	DUCT SIZE	HOUSING SIZE	PAGE
D4S	40-120	<0.3 - 0.3	Almost Silent	N/A	YES	Other Rooms	Whole Building/Local	ETL	6"	12 ⁷ / ₈ "W x 12 ³ / ₄ "D x 9 ⁷ / ₈ "H	7
D4D	40-120	<0.3 - 0.3	Almost Silent	N/A	YES	Other Rooms	Whole Building/Local	ETL	6"	12 ⁷ / ₈ "W x 12 ³ / ₄ "D x 9 ⁷ / ₈ "H	7
D4SH	40-120	<0.3 - 0.3	Almost Silent	N/A	YES	Bathrooms	Whole Building/Local	ETL	6"	12 ⁷ / ₈ "W x 12 ³ / ₄ "D x 9 ⁷ / ₈ "H	7
D4DH	40-120	<0.3 - 0.3	Almost Silent	N/A	YES	Bathrooms	Whole Building/Local	ETL	6"	12 ⁷ / ₈ "W x 12 ³ / ₄ "D x 9 ⁷ / ₈ "H	7
EVD	30-150	<0.3	Almost Silent	N/A	YES	Other Rooms	Whole Building/Local	ETL	6"	12 ⁷ / ₈ "W x 12 ³ / ₄ "D x 9 ⁷ / ₈ "H	9
EVLD	30-150	<0.3	Almost Silent	LED	YES	Other Rooms	Whole Building/Local	ETL	6"	12 ⁷ / ₈ "W x 12 ³ / ₄ "D x 9 ⁷ / ₈ "H	9
EVDGH	30-150	<0.3	Almost Silent	N/A	YES	Bathrooms	Whole Building/Local	ETL	6"	12 ⁷ / ₈ "W x 12 ³ / ₄ "D x 9 ⁷ / ₈ "H	9
EVLDPH	30-150	<0.3	Almost Silent	LED	YES	Bathrooms	Whole Building/Local	ETL	6"	12 ⁷ / ₈ "W x 12 ³ / ₄ "D x 9 ⁷ / ₈ "H	9
EVDH	30-150	<0.3	Almost Silent	N/A	YES	Bathrooms	Whole Building/Local	ETL	6"	12 ⁷ / ₈ "W x 12 ³ / ₄ "D x 9 ⁷ / ₈ "H	9
EVLDPH	30-150	<0.3	Almost Silent	LED	YES	Bathrooms	Whole Building/Local	ETL	6"	12 ⁷ / ₈ "W x 12 ³ / ₄ "D x 9 ⁷ / ₈ "H	9
E80S	80	<0.3	Almost Silent	N/A	YES	Other Rooms	Whole Building/Local	ETL	6"	12 ⁷ / ₈ "W x 12 ³ / ₄ "D x 9 ⁷ / ₈ "H	11
E110S	110	<0.3	Almost Silent	N/A	YES	Other Rooms	Whole Building/Local	ETL	6"	12 ⁷ / ₈ "W x 12 ³ / ₄ "D x 9 ⁷ / ₈ "H	11
E130S	130	<0.3	Almost Silent	N/A	YES	Other Rooms	Whole Building/Local	ETL	6"	12 ⁷ / ₈ "W x 12 ³ / ₄ "D x 9 ⁷ / ₈ "H	11
E80SGH	80	<0.3	Almost Silent	N/A	YES	Bathrooms	Whole Building/Local	ETL	6"	12 ⁷ / ₈ "W x 12 ³ / ₄ "D x 9 ⁷ / ₈ "H	11
E130SGH	130	<0.3	Almost Silent	N/A	YES	Bathrooms	Whole Building/Local	ETL	6"	12 ⁷ / ₈ "W x 12 ³ / ₄ "D x 9 ⁷ / ₈ "H	11
EL80SGH	80	<0.3	Almost Silent	LED	YES	Bathrooms	Whole Building/Local	ETL	6"	12 ⁷ / ₈ "W x 12 ³ / ₄ "D x 9 ⁷ / ₈ "H	11
EL130SGH	130	<0.3	Almost Silent	LED	YES	Bathrooms	Whole Building/Local	ETL	6"	12 ⁷ / ₈ "W x 12 ³ / ₄ "D x 9 ⁷ / ₈ "H	11
E80SH	80	<0.3	Almost Silent	N/A	YES	Bathrooms	Whole Building/Local	ETL	6"	12 ⁷ / ₈ "W x 12 ³ / ₄ "D x 9 ⁷ / ₈ "H	11
E130SH	130	<0.3	Almost Silent	N/A	YES	Bathrooms	Whole Building/Local	ETL	6"	12 ⁷ / ₈ "W x 12 ³ / ₄ "D x 9 ⁷ / ₈ "H	11
AK150LS	150	0.9	Very Quiet	N/A	YES	Other Rooms	Local	UL	6"	12 ⁷ / ₈ "W x 12 ³ / ₄ "D x 9 ⁷ / ₈ "H	13
AK200LS	200	1.2	Quiet	N/A	YES	Other Rooms	Local	UL	6"	12 ⁷ / ₈ "W x 12 ³ / ₄ "D x 9 ⁷ / ₈ "H	13
AK280LS	280	3.0	Quiet	N/A	YES	Other Rooms	Local	UL	6"	12 ⁷ / ₈ "W x 12 ³ / ₄ "D x 9 ⁷ / ₈ "H	13
AK80LS6	80	0.5	Very Quiet	N/A	YES	Other Rooms	Whole Building/Local	UL	6"	10 ⁷ / ₈ "W x 9 ³ / ₈ "D x 7 ⁷ / ₈ "H	13
AK90LS6	90	0.8	Very Quiet	N/A	YES	Other Rooms	Whole Building/Local	UL	6"	10 ⁷ / ₈ "W x 9 ³ / ₈ "D x 7 ⁷ / ₈ "H	13
AK100LS6	100	1.0	Very Quiet	N/A	YES	Other Rooms	Whole Building/Local	UL	6"	10 ⁷ / ₈ "W x 9 ³ / ₈ "D x 7 ⁷ / ₈ "H	13
AK110LS6	110	1.4	Quiet	N/A	YES	Other Rooms	Local	UL	6"	10 ⁷ / ₈ "W x 9 ³ / ₈ "D x 7 ⁷ / ₈ "H	13
AK80LS6H	80	0.5	Very Quiet	N/A	YES	Bathrooms	Whole Building/Local	UL	6"	10 ⁷ / ₈ "W x 9 ³ / ₈ "D x 7 ⁷ / ₈ "H	13
AK100LS6H	100	1.0	Very Quiet	N/A	YES	Bathrooms	Whole Building/Local	UL	6"	10 ⁷ / ₈ "W x 9 ³ / ₈ "D x 7 ⁷ / ₈ "H	13
AK80LS	80	0.7	Very Quiet	N/A	YES	Other Rooms	Whole Building/Local	UL	4"	10 ⁷ / ₈ "W x 9 ³ / ₈ "D x 7 ⁷ / ₈ "H	13
AK110LS	110	1.5	Quiet	N/A	YES	Other Rooms	Whole Building/Local	UL	4"	10 ⁷ / ₈ "W x 9 ³ / ₈ "D x 7 ⁷ / ₈ "H	13
AK50S	50	0.5	Very Quiet	N/A	YES	Other Rooms	Whole Building/Local	UL	4"	10 ⁷ / ₈ "W x 9 ³ / ₈ "D x 7 ⁷ / ₈ "H	15
AK80LS-1	80	1.0	Very Quiet	N/A	YES	Other Rooms	Whole Building/Local	UL	4"	10 ⁷ / ₈ "W x 9 ³ / ₈ "D x 7 ⁷ / ₈ "H	15
AK80	80	1.5	Quiet	N/A	YES	Other Rooms	Local	UL	4"	10 ⁷ / ₈ "W x 9 ³ / ₈ "D x 7 ⁷ / ₈ "H	15
AK80H	80	1.0	Very Quiet	N/A	YES	Bathrooms	Local	UL	4"	10 ⁷ / ₈ "W x 9 ³ / ₈ "D x 7 ⁷ / ₈ "H	15
AK90	90	1.5	Quiet	N/A	YES	Other Rooms	Local	UL	4"	10 ⁷ / ₈ "W x 9 ³ / ₈ "D x 7 ⁷ / ₈ "H	15
AK110PN	100	2.0	Quiet	N/A	YES	Other Rooms	Local	UL	4"	10 ⁷ / ₈ "W x 9 ³ / ₈ "D x 7 ⁷ / ₈ "H	15
AK100H	100	2.0	Quiet	N/A	YES	Bathrooms	Local	UL	4"	10 ⁷ / ₈ "W x 9 ³ / ₈ "D x 7 ⁷ / ₈ "H	15
AK100D	50 / 100	0.4 / 2.0	Quiet	N/A	YES	Other Rooms	Whole Building/Local	UL	4"	10 ⁷ / ₈ "W x 9 ³ / ₈ "D x 7 ⁷ / ₈ "H	15
LEDAK50	50	0.3	Very Quiet	LED	YES	Other Rooms	Whole Building/Local	UL	4"	10 ⁷ / ₈ "W x 9 ³ / ₈ "D x 7 ⁷ / ₈ "H	15
LEDAK80	80	1.2	Quiet	LED	YES	Other Rooms	Local	UL	4"	10 ⁷ / ₈ "W x 9 ³ / ₈ "D x 7 ⁷ / ₈ "H	15
LEDAK100	100	2.0	Quiet	LED	YES	Other Rooms	Local	UL	4"	10 ⁷ / ₈ "W x 9 ³ / ₈ "D x 7 ⁷ / ₈ "H	15
LEDAK100H	100	2.0	Quiet	LED	YES	Bathrooms	Local	UL	4"	10 ⁷ / ₈ "W x 9 ³ / ₈ "D x 7 ⁷ / ₈ "H	15
LEDAK100D	50 / 100	0.4 / 2.0	Quiet	LED	YES	Other Rooms	Whole Building/Local	UL	4"	10 ⁷ / ₈ "W x 9 ³ / ₈ "D x 7 ⁷ / ₈ "H	15
BFC90	90	1.0	Very Quiet	N/A	YES	Other Rooms	Whole Building/Local	ETL	4"	9"W x 9"D x 7 ⁷ / ₈ "H	17
BFC90H	90	1.0	Very Quiet	N/A	YES	Bathrooms	Whole Building/Local	ETL	4"	9"W x 9"D x 7 ⁷ / ₈ "H	17
BFC100	100	1.0	Very Quiet	N/A	YES	Other Rooms	Whole Building/Local	ETL	4"	9"W x 9"D x 7 ⁷ / ₈ "H	17
BFC100H	100	1.0	Very Quiet	N/A	YES	Bathrooms	Whole Building/Local	ETL	4"	9"W x 9"D x 7 ⁷ / ₈ "H	17



SPECIFICATIONS

MODEL	CFM	SONES	SOUND LEVEL	LIGHTING	ENERGY STAR	CALGREEN	ASHRAE 62.2	LISTING	DUCT SIZE	HOUSING SIZE	PAGE
BFQ50	50	0.6	Very Quiet	N/A	YES	Other Rooms	Whole Building/Local	UL	4"	9 ¹ / ₈ "W x 8 ¹ / ₁₆ "D x 4 ³ / ₄ "H	19
BFQ75	70	2.0	Quiet	N/A	YES	Other Rooms	Local	UL	4"	9 ¹ / ₈ "W x 8 ¹ / ₁₆ "D x 4 ³ / ₄ "H	19
BFQ80	80	2.0	Quiet	N/A	NO	NO	Local	UL	4"	9 ¹ / ₈ "W x 8 ¹ / ₁₆ "D x 4 ³ / ₄ "H	19
BFQ90	90	3.0	Quiet	N/A	NO	NO	Local	UL	4"	9 ¹ / ₈ "W x 8 ¹ / ₁₆ "D x 4 ³ / ₄ "H	19
BFQ110	100	3.5	Moderate	N/A	NO	NO	NO	UL	4"	9 ¹ / ₈ "W x 8 ¹ / ₁₆ "D x 4 ³ / ₄ "H	19
BFQ140	120	5.0	Moderate	N/A	NO	NO	NO	UL	4"	9 ¹ / ₈ "W x 8 ¹ / ₁₆ "D x 4 ³ / ₄ "H	19
BFQ70W	70	1.5	Quiet	N/A	YES	Other Rooms	Local	UL	4"	9 ¹ / ₈ "W x 8 ¹ / ₁₆ "D x 3 ⁷ / ₈ "H	20
BFQL50	50	0.8	Very Quiet	LED	YES	NO	Whole Building/Local	UL	4"	9 ¹ / ₈ "W x 8 ¹ / ₂ "D x 5 ³ / ₄ "H	21
BFQL70	70	2.0	Quiet	LED	YES	NO	Local	UL	4"	9 ¹ / ₈ "W x 8 ¹ / ₂ "D x 5 ³ / ₄ "H	21
AK100L	100	2.5	Quiet	Incandescent	NO	NO	Local	UL	4"	9 ¹ / ₈ "W x 10 ⁷ / ₈ "D x 7 ⁷ / ₈ "H	23
AK863L	100	3.5	Moderate	Incandescent	NO	NO	NO	UL	4"	9 ¹ / ₈ "W x 9 ¹ / ₄ "D x 5 ⁷ / ₈ "H	23
DRLC701	70	4.0	Moderate	Incandescent	NO	NO	NO	UL	4"	7 ³ / ₈ "W x 7 ³ / ₈ "D x 5 ⁷ / ₈ "H	25
DRLC702	70	4.0	Moderate	Incandescent	NO	NO	NO	UL	4"	7 ³ / ₈ "W x 7 ³ / ₈ "D x 5 ⁷ / ₈ "H	25
DRLC703	70	4.0	Moderate	Incandescent	NO	NO	NO	UL	4"	7 ³ / ₈ "W x 7 ³ / ₈ "D x 5 ⁷ / ₈ "H	25
AS54	50	3.0	Quiet	N/A	NO	NO	Local	UL	4"	7 ¹ / ₄ "W x 7 ¹ / ₄ "D x 4 ³ / ₄ "H	27
AS50	50	4.0	Quiet	N/A	NO	NO	NO	UL	3"	7 ¹ / ₄ "W x 7 ¹ / ₄ "D x 3 ³ / ₄ "H	27
AS70	70	5.5	High	N/A	NO	NO	NO	UL	3"	7 ¹ / ₄ "W x 7 ¹ / ₄ "D x 3 ³ / ₄ "H	27
ASLC50	50	3.0	Moderate	Incandescent	NO	NO	Local	UL	4"	7 ³ / ₈ "W x 7 ³ / ₈ "D x 5 ⁷ / ₈ "H	27
ASLC70	70	5.5	Moderate	Incandescent	NO	NO	NO	UL	4"	7 ³ / ₈ "W x 7 ³ / ₈ "D x 5 ⁷ / ₈ "H	27
FRAK50S	50	0.6	Very Quiet	N/A	YES	Other Rooms	Whole Building/Local	UL	4"	11 ⁵ / ₁₆ "W x 9 ¹ / ₂ "D x 7 ⁷ / ₈ "H	30
FRAK80	80	1.0	Very Quiet	N/A	YES	Other Rooms	Whole Building/Local	UL	4"	11 ⁵ / ₁₆ "W x 9 ¹ / ₂ "D x 7 ⁷ / ₈ "H	30
FRAK80H	80	1.0	Very Quiet	N/A	YES	Bathrooms	Whole Building/Local	UL	4"	11 ⁵ / ₁₆ "W x 9 ¹ / ₂ "D x 7 ⁷ / ₈ "H	30
FRAK90	90	1.5	Quiet	N/A	YES	Other Rooms	Local	UL	4"	11 ⁵ / ₁₆ "W x 9 ¹ / ₂ "D x 7 ⁷ / ₈ "H	30
FRAK100	100	2.0	Quiet	N/A	YES	Other Rooms	Local	UL	4"	11 ⁵ / ₁₆ "W x 9 ¹ / ₂ "D x 7 ⁷ / ₈ "H	30
FRAKV	30-100	<0.3-2.0	Quiet	N/A	YES	Other Rooms	Whole Building/Local	UL	4"	11 ⁵ / ₁₆ "W x 9 ¹ / ₂ "D x 7 ⁷ / ₈ "H	30
FRAS50	50	3.0	Quiet	N/A	NO	NO	NO	UL	3"	7 ⁷ / ₈ "W x 7 ¹ / ₁₆ "D x 5 ⁷ / ₈ "H	31
FRAS70	70	4.0	High	N/A	NO	NO	NO	UL	3"	7 ⁷ / ₈ "W x 7 ¹ / ₁₆ "D x 5 ⁷ / ₈ "H	31
AK55L	70	5.0	High	Incandescent	NO	NO	NO	UL	4"	14 ¹ / ₂ "W x 8 ³ / ₈ "D x 6 ¹ / ₂ "H	33
AK965L	70	3.5	Moderate	Incandescent	NO	NO	NO	UL	4"	14 ¹ / ₂ "W x 8 ³ / ₈ "D x 6 ¹ / ₂ "H	33
AK917	70	3.5	Moderate	Heat Lamp	NO	NO	NO	UL	4"	8"W x 8"D x 5 ⁷ / ₈ "H	33
AKZA150	120	-	N/A	N/A	NO	NO	N/A	ETL	6"	12 ¹ / ₁₆ "W x 13 ¹ / ₁₆ "D x 12 ⁹ / ₁₆ "H	36
AKZA200	210	-	N/A	N/A	NO	NO	N/A	ETL	6"	12 ¹ / ₁₆ "W x 13 ¹ / ₁₆ "D x 12 ⁹ / ₁₆ "H	36
AKZA200D	80/200	-	N/A	N/A	NO	NO	N/A	ETL	6"	12 ¹ / ₁₆ "W x 13 ¹ / ₁₆ "D x 12 ⁹ / ₁₆ "H	36
AK300	300	0.8	Very Quiet	N/A	YES	Other Rooms	Whole Building/Local	ETL	4 ¹ / ₂ " x 18 ¹ / ₂ "	21 ¹ / ₂ "W x 12 ³ / ₄ "D x 12 ³ / ₄ "H	37
AK400	420	1.5	Quiet	N/A	NO	NO	Local	ETL	4 ¹ / ₂ " x 18 ¹ / ₂ "	21 ¹ / ₂ "W x 12 ³ / ₄ "D x 12 ³ / ₄ "H	37
AK600	620	4.5	Moderate	N/A	NO	NO	NO	ETL	4 ¹ / ₂ " x 18 ¹ / ₂ "	21 ¹ / ₂ "W x 12 ³ / ₄ "D x 12 ³ / ₄ "H	37
QFAMD	30-130	N/A	Almost Silent	N/A	YES	N/A	Outdoor Air	ETL	6"	14 ⁷ / ₈ "W x 10 ¹ / ₈ "D x 11 ¹ / ₂ "H	41
F130D	40-120	N/A	Almost Silent	N/A	YES	N/A	Outdoor Air	ETL	6"	14 ⁷ / ₈ "W x 10 ¹ / ₈ "D x 11 ¹ / ₂ "H	41
MQFAM	50 / 80	N/A	Almost Silent	N/A	NO	N/A	Outdoor Air	ETL	6"	9"W x 17 ³ / ₈ "D x 8 ¹ / ₄ "H	42
MFAS	50 / 80	N/A	Almost Silent	N/A	NO	N/A	Outdoor Air	ETL	6"	9"W x 17 ³ / ₈ "D x 8 ¹ / ₄ "H	42





TOTAL HOME VENTILATION

EFFICIENT • EFFECTIVE • ECONOMICAL



LEARN MORE



10 TIME ENERGY STAR® PARTNER OF THE YEAR
2023, 2022, 2021, 2020, 2019, 2014 Partner of the Year - Sustained Excellence
2018, 2017, 2013 and 2012 Partner of the Year, 2014 Climate Communications

