



# **HaloPlex HS Target Enrichment System For Illumina Sequencing**



## **Protocol**

Version C1, December 2016

**For Research Use Only. Not for use in diagnostic  
procedures.**



**Agilent Technologies**

## Notices

© Agilent Technologies, Inc. 2015, 2016

No part of this manual may be reproduced in any form or by any means (including electronic storage and retrieval or translation into a foreign language) without prior agreement and written consent from Agilent Technologies, Inc. as governed by United States and international copyright laws.

### Manual Part Number

G9931-90000

### Edition

Version C1, December 2016

Printed in USA

Agilent Technologies, Inc.  
5301 Stevens Creek Blvd  
Santa Clara, CA 95051 USA

### Technical Support

For technical product support, contact your local Agilent Support Services representative.

For US and Canada, call (800) 227-9770 (option 3,4,4). For other countries, find your support center telephone numbers at [www.agilent.com/chem/contactus](http://www.agilent.com/chem/contactus).

Or send an e-mail to:  
[SureSelect.Support@agilent.com](mailto:SureSelect.Support@agilent.com)

## Warranty

**The material contained in this document is provided “as is,” and is subject to being changed, without notice, in future editions. Further, to the maximum extent permitted by applicable law, Agilent disclaims all warranties, either express or implied, with regard to this manual and any information contained herein, including but not limited to the implied warranties of merchantability and fitness for a particular purpose. Agilent shall not be liable for errors or for incidental or consequential damages in connection with the furnishing, use, or performance of this document or of any information contained herein. Should Agilent and the user have a separate written agreement with warranty terms covering the material in this document that conflict with these terms, the warranty terms in the separate agreement shall control.**

## Technology Licenses

The hardware and/or software described in this document are furnished under a license and may be used or copied only in accordance with the terms of such license.

## Restricted Rights Legend

U.S. Government Restricted Rights. Software and technical data rights granted to the federal government include only those rights customarily provided to end user customers. Agilent provides this customary commercial license in Software and technical data pursuant to FAR 12.211 (Technical Data) and 12.212 (Computer Software) and, for the Department of Defense, DFARS 252.227-7015 (Technical Data - Commercial Items) and DFARS 227.7202-3 (Rights in Commercial Computer Software or Computer Software Documentation).

## Notice to Purchaser

This product is provided under an agreement between Bio-Rad Laboratories and Agilent Technologies, Inc., and the manufacture, use, sale or import of this product is subject to US. Pat. No. 6,627,424 and EP Pat. No. 1 283 875 B1, owned by Bio-Rad Laboratories, Inc. Purchase of this product conveys to the buyer the non-transferable right to use the purchased amount of the product and components of the product in PCR (but not real-time PCR) in the Research Field including all Applied Research Fields (including but not limited to forensics, animal testing, and food testing).

## Safety Notices

### CAUTION

A **CAUTION** notice denotes a hazard. It calls attention to an operating procedure, practice, or the like that, if not correctly performed or adhered to, could result in damage to the product or loss of important data. Do not proceed beyond a **CAUTION** notice until the indicated conditions are fully understood and met.

---

### WARNING

A **WARNING** notice denotes a hazard. It calls attention to an operating procedure, practice, or the like that, if not correctly performed or adhered to, could result in personal injury or death. Do not proceed beyond a **WARNING** notice until the indicated conditions are fully understood and met.

---

## In this Guide...

This guide describes an optimized protocol for using the HaloPlex HS target enrichment system to prepare sequencing library samples for Illumina paired-end multiplexed sequencing platforms.

### **1 Before You Begin**

This chapter contains information (such as procedural notes, safety information, required reagents and equipment) that you should read and understand before you start an experiment.

### **2 Sample Preparation**

This chapter describes the steps of the HaloPlex HS workflow, to prepare target-enriched sequencing libraries for the Illumina platform.

### **3 Appendix: Using FFPE-derived DNA Samples**

This chapter contains information for optimizing performance when using FFPE-derived DNA samples.

### **4 Reference**

This chapter contains reference information, including component kit contents and index sequences.

## What's New in Version C1

- Updated instructions for duration of ethanol evaporation step and updated Caution notice to avoid overdrying of beads (see [step 12](#) on [page 33](#))
- Updated recommendation to prepare ligation reagents during the 5-minute incubation period for sample binding to AMPure XP beads (see [step 5](#) on [page 32](#))
- Updated instructions for duration of ethanol evaporation step ([step 13](#) on [page 42](#))
- Updates to supplier name for materials purchased from Thermo Fisher Scientific (see [Table 1](#) on page 11, [Table 3](#) on page 13, and [Table 4](#) on page 14)

## What's New in Version C0

- Support for ClearSeq AML HS kits (see [Table 2](#) on page 12 and [Table 14](#) on page 58)
- Support for FFPE-derived DNA samples (see [“Appendix: Using FFPE-derived DNA Samples”](#) on page 53) and see Notes on [page 19](#)
- Support for sequencing using the NextSeq 500 platform and additional updates to downstream sequencing guidelines for all platforms (see [page 47](#) to [page 52](#))
- Support for 96-Reaction kits supplied with either of two indexing primer plates. Kits provided with a yellow indexing primer plate include revised Index F09; see [Table 18](#) on page 61 for index sequences. Kits provided with an orange indexing primer plate include the original Index F09; see [Table 19](#) on page 62 for index sequences. 48-reaction kits (primers provided in orange plate) and 16-reaction kits (primers provided in white-capped tubes) are unaffected by this change.
- New section [“DNA Sample Quality and Quantity Considerations”](#) on page 17
- Updates to format of DNA sample preparation instructions (see [page 19](#))
- Update to format of [Table 14](#) on page 58

- Update to Reagent description in [Table 6](#) on page 29 to include ClearSeq HS Probes
- Correction to thawing conditions for HS Ligation Solution (see [step 7](#) on [page 31](#))
- Update to description of amplicons in “[Expected Results](#)” on page 43
- Support for 4200 TapeStation (see [Table 4](#) on page 14)

# Content

## 1 Before You Begin

|  |    |
|--|----|
| Procedural Notes                           | 10 |
| Safety Notes                               | 10 |
| Required Reagents                          | 11 |
| Required Equipment                         | 13 |
| Optional Validation Reagents and Equipment | 14 |

## 2 Sample Preparation

|   |    |
|---|----|
| DNA Sample Quality and Quantity Considerations                      | 17 |
| Run Size Considerations   | 17 |
| Run Time Considerations   | 18 |
| Step 1. Digest genomic DNA with restriction enzymes                 | 19 |
| Step 2. Hybridize digested DNA to HaloPlex HS or ClearSeq HS probes | 29 |
| Step 3. Remove the hybridization buffer                             | 32 |
| Step 4. Ligate the circularized fragments                           | 34 |
| Step 5. Capture the target DNA                                      | 36 |
| Step 6. PCR amplify the captured target library                     | 39 |
| Step 7. Purify the amplified target library                         | 41 |
| Step 8. Validate enrichment and quantify enriched target DNA        | 43 |
| Step 9. Pool samples for multiplexed sequencing                     | 47 |
| MiSeq platform sequencing run setup guidelines                      | 48 |
| HiSeq and NextSeq platform sequencing run setup guidelines          | 52 |
| Sequence analysis resources   | 52 |

## 3 Appendix: Using FFPE-derived DNA Samples

|                                     |    |
|-------------------------------------|----|
| HaloPlex HS Protocol Modifications  | 54 |
| Downstream Sequencing Modifications | 55 |

## 4 Reference

|   |    |
|---|----|
| Kit Contents                                | 58 |
| Nucleotide Sequences of HaloPlex HS Indexes | 61 |







# 1 Before You Begin

|  |    |
|--|----|
| Procedural Notes                           | 10 |
| Safety Notes                               | 10 |
| Required Reagents                          | 11 |
| Required Equipment                         | 13 |
| Optional Validation Reagents and Equipment | 14 |

Make sure you read and understand the information in this chapter and have the necessary equipment and reagents listed before you start an experiment.



## Procedural Notes

- The HaloPlex HS protocol is optimized for digestion of 50 ng of genomic DNA (split among 8 different restriction digestion reactions) plus excess DNA for pipetting losses. Using lower amounts of DNA in the enrichment protocol can adversely affect your results. Use a fluorometry-based DNA quantitation method, such as PicoGreen stain or Qubit fluorometry to quantify the DNA starting material.
- Always keep pre-amplification and post-amplification DNA samples in separate work areas. Perform the enrichment procedure in the pre-amplification area. Open and store the amplified, enriched DNA samples only in the post-amplification area.
- Possible stopping points, where DNA samples may be stored between steps, are marked in the protocol. Store the samples at  $-20^{\circ}\text{C}$ , but do not subject the samples to multiple freeze/thaw cycles.
- Ensure that master mixes are thoroughly mixed, by pipetting up-and-down or by gentle vortexing, before distributing to the samples.
- In general, follow Biosafety Level 1 (BL1) safety rules.

## Safety Notes

### CAUTION

- Wear appropriate personal protective equipment (PPE) when working in the laboratory.
-

## Required Reagents

**Table 1** Required Reagents for HaloPlex HS Target Enrichment

| Description  | Vendor and part number  |
|--|---|
| HaloPlex HS Target Enrichment System Kit <b>or</b><br>ClearSeq HS Target Enrichment System Kit                           | Select the appropriate kit for your probe design from <a href="#">Table 2</a> |
| Nuclease-free Water (not DEPC-treated)   | Ambion Cat #AM9930  |
| Agencourt AMPure XP Kit<br>5 ml<br>60 ml   | Beckman Coulter Genomics<br>p/n A63880<br>p/n A63881                          |
| Dynabeads MyOne Streptavidin T1<br>2 mL<br>10 mL<br>100 mL   | Thermo Fisher Scientific<br>p/n 65601<br>p/n 65602<br>p/n 65603               |
| 10 M NaOH, molecular biology grade   | Sigma, p/n 72068  |
| 10 mM Tris-HCl, pH 8.5   | General laboratory supplier   |
| 100% Ethanol, molecular biology grade  | Sigma-Aldrich p/n E7023   |
| Quant-iT dsDNA BR Assay Kit, for use with the Qubit fluorometer<br>100 assays, 2-1000 ng<br>500 assays, 2-1000 ng        | Thermo Fisher Scientific p/n Q32850<br>Thermo Fisher Scientific p/n Q32853    |
| Agilent NGS FFPE QC Kit ( <b>required only for processing FFPE-derived DNA samples</b> )<br>16 reactions<br>96 reactions | Agilent<br>p/n G9700A<br>p/n G9700B   |

## 1 Before You Begin

### Required Reagents

Before ordering a HaloPlex HS Target Enrichment System Reagent Kit, use Agilent's SureDesign tool at [www.agilent.com/genomics/suredesign](http://www.agilent.com/genomics/suredesign) to design a custom HaloPlex HS probe or to select a pre-designed ClearSeq HS disease research probe. Reagent kit ordering information is supplied as part of the SureDesign process and is summarized in [Table 2](#) below.

**Table 2** HaloPlex HS Target Enrichment System Kits for Illumina Sequencing

| HaloPlex HS Probe Design                  | Part Number          |                      |              |
|---|----------------------|----------------------|--------------|
|   | 96 Reactions         | 48 Reactions         | 16 Reactions |
| Custom Panel Tier 1 <sup>*</sup> , ILMFST | G9931B               | G9931C               | —            |
| Custom Panel Tier 2 <sup>†</sup> , ILM    | G9941B               | G9941C               | —            |
| Custom Panel Tier 3 <sup>‡</sup> , ILM    | G9951B               | G9951C               | —            |
| ClearSeq Cancer HS, ILM                   | G9933B               | —                    | G9933A       |
| ClearSeq AML HS, ILM                      | G9963B               | —                    | G9963A       |
| ClearSeq Cardiomyopathy HS, ILM           | G9943B               | —                    | G9943A       |
| ClearSeq ICCG HS, ILM                     | G9954B <sup>**</sup> | G9954C <sup>**</sup> | —            |
| ClearSeq Connective Disorder HS, ILM      | G9954B <sup>**</sup> | G9954C <sup>**</sup> | —            |
| ClearSeq Arrhythmia HS, ILM               | G9954B <sup>**</sup> | G9954C <sup>**</sup> | —            |
| ClearSeq Noonan Syndrome HS, ILM          | G9954B <sup>**</sup> | G9954C <sup>**</sup> | —            |
| ClearSeq Chromosome X HS, ILM             | G9954B <sup>**</sup> | G9954C <sup>**</sup> | —            |

\* Tier 1 designs are 1-500 kb and up to 20,000 probes.

† Tier 2 designs are 0.5-2.5 Mb OR 1-500 kb with >20,000 probes.

‡ Tier 3 designs are 2.6 Mb-5 Mb.

\*\* Select the appropriate made-to-order probe option in SureDesign.

#### NOTE

Kits contain enough reagents for 96, 48, or 16 reactions total, including one or more control reactions using Enrichment Control DNA (ECD) samples. Each run of up to 96 samples should include one ECD control enrichment reaction.

## Required Equipment

**Table 3** Required Equipment for HaloPlex HS Target Enrichment

| Description   | Vendor and part number   |
|---|--|
| Thermal Cycler  | Agilent SureCycler 8800, p/n G8800A and 96 well plate module, p/n G8810A or equivalent thermal cycler and accessories* |
| Thermal cycler-compatible 96-well plates                    | Agilent p/n 410088 (for SureCycler 8800) or see manufacturer's recommendations   |
| 8-well strip tubes and caps                                 | Agilent p/n 410092 (strip tubes) and Agilent p/n 410096 (strip tube caps)  |
| 12-well strip tubes and caps                                | Agilent p/n 410082 (strip tubes) and Agilent p/n 410086 (strip tube caps)  |
| 96-well plate and strip tube-compatible magnetic separator  | DynaMag-96 Side magnet, Thermo Fisher Scientific p/n 12331D, or equivalent   |
| 1.5 ml tube-compatible magnetic separator                   | DynaMag-2 magnet, Thermo Fisher Scientific p/n 12321D, or equivalent   |
| Benchtop microcentrifuge                                    | VWR p/n 93000-196, or equivalent   |
| Benchtop plate centrifuge                                   | Labnet International MPS1000 Mini Plate Spinner p/n C1000, or equivalent   |
| Multichannel pipettes (10- $\mu$ L and 100- $\mu$ L volume) | Pipetman or equivalent   |
| P10, P20, P200 and P1000 pipettes                           | Pipetman P10, P20, P200, P1000 or equivalent   |
| Adhesive seals for 96-well PCR plates                       | Agilent p/n 410186, or equivalent  |
| Qubit 2.0 Fluorometer                                       | Thermo Fisher Scientific p/n Q32866  |
| Qubit assay tubes   | Thermo Fisher Scientific p/n Q32856  |
| Ice bucket  | General laboratory supplier  |
| Vortex mixer  | IKA Vortex 4 digital vortex, p/n 4050100, or equivalent  |

\* Thermal cycler must have a maximum reaction volume specification of at least 100  $\mu$ L and must be compatible with 0.2 ml tubes.

## Optional Validation Reagents and Equipment

**Table 4** Reagents and Equipment for Optional Validation Methods

| Description                                  | Vendor and part number                  |
|--|---|
| TapeStation Platform                         |   |
| 2200 TapeStation <b>OR</b>                   | Agilent p/n G2964AA or G2965AA          |
| 4200 TapeStation                             | Agilent p/n G2991AA                     |
| TapeStation Consumables                      |   |
| High Sensitivity D1000 ScreenTape            | Agilent p/n 5067-5584                   |
| High Sensitivity D1000 Reagents              | Agilent p/n 5067-5585                   |
| 2100 Bioanalyzer Platform and Consumables    |   |
| 2100 Bioanalyzer Laptop Bundle               | Agilent p/n G2943CA                     |
| 2100 Bioanalyzer Electrophoresis Set         | Agilent p/n G2947CA                     |
| High Sensitivity DNA Kit                     | Agilent p/n 5067-4626                   |
| Gel Electrophoresis Platform and Consumables |   |
| XCell SureLock Mini-cell                     | Thermo Fisher Scientific p/n EI0001     |
| Novex 6% Polyacrylamide, TBE Pre-cast Gels   | Thermo Fisher Scientific p/n EC62655BOX |
| Novex TBE Running Buffer, 5X                 | Thermo Fisher Scientific p/n LC6675     |
| Novex High-density TBE Sample Buffer, 5X     | Thermo Fisher Scientific p/n LC6678     |
| GelRed Nucleic Acid Stain, 3X in water       | Biotium p/n 41001                       |
| DNA molecular weight markers                 | General laboratory supplier             |
| UV-transilluminator                          | General laboratory supplier             |



## 2 Sample Preparation

|   |    |
|---|----|
| DNA Sample Quality and Quantity Considerations                      | 17 |
| Run Size Considerations   | 17 |
| Run Time Considerations   | 18 |
| Step 1. Digest genomic DNA with restriction enzymes                 | 19 |
| Step 2. Hybridize digested DNA to HaloPlex HS or ClearSeq HS probes | 29 |
| Step 3. Remove the hybridization buffer                             | 32 |
| Step 4. Ligate the circularized fragments                           | 34 |
| Step 5. Capture the target DNA                                      | 36 |
| Step 6. PCR amplify the captured target library                     | 39 |
| Step 7. Purify the amplified target library                         | 41 |
| Step 8. Validate enrichment and quantify enriched target DNA        | 43 |
| Step 9. Pool samples for multiplexed sequencing                     | 47 |
| MiSeq platform sequencing run setup guidelines                      | 48 |
| HiSeq and NextSeq platform sequencing run setup guidelines          | 52 |

This section contains instructions for gDNA library target enrichment for sequence analysis using the Illumina platform. For each sample to be sequenced, an individual target-enriched, indexed library is prepared.

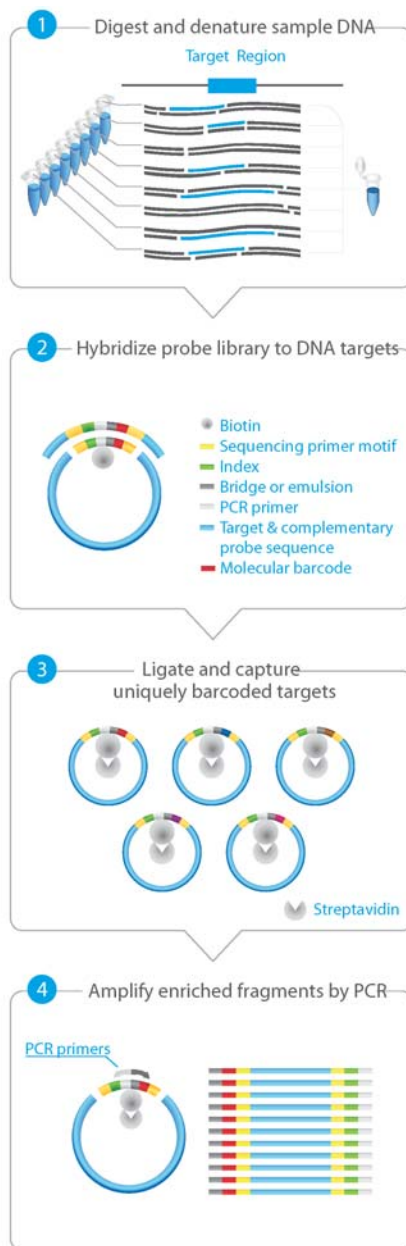
The target region can vary from 1 kb to 5 Mb. Custom HaloPlex HS probes must be designed before purchasing the kit using Agilent's SureDesign tool at [www.agilent.com/genomics/suredesign](http://www.agilent.com/genomics/suredesign).

The HaloPlex HS Target Enrichment System amplifies thousands of targets in the same reaction, incorporating standard Illumina paired-end sequencing motifs in the process. During hybridization, each sample can be uniquely indexed, allowing for pooling of up to 96 samples per sequencing lane. The indexing primers incorporated during hybridization also include degenerate molecular barcode sequences, allowing tracking of individual target amplicons during sequence analysis.

See [Figure 1](#) for a summary of the overall HaloPlex HS target enrichment workflow.



## 2 Sample Preparation



**Figure 1** Overall HaloPlex HS target-enriched sequencing sample preparation workflow.



## DNA Sample Quality and Quantity Considerations

Target enrichment performance is affected by the quality and precise quantity of the input sample DNA.

Before you begin, verify that genomic DNA samples have an OD 260/280 ratio ranging from 1.8 to 2.0. Verify the size distribution of DNA in each DNA preparation by gel electrophoresis. Any smearing below 2.5 kb indicates sample degradation.

For standard DNA samples (non-FFPE samples) it is important to use a fluorometry-based DNA quantitation method, such as Qubit fluorometry or PicoGreen staining, as directed in the protocol to accurately quantify the DNA starting material.

In the standard protocol, 50 ng of genomic DNA is split among eight different restriction digests, with additional excess DNA included to allow for pipetting losses (for total DNA input amount of 57.6 ng). Using <50 ng DNA in the enrichment protocol can result in low yield and can potentiate rare allele dropouts.

### Target Enrichment from FFPE Samples

This protocol is compatible with FFPE-derived DNA samples after modifying the amount of input DNA according to the DNA quality. Review the Appendix on [page 53](#) before starting the protocol to determine the appropriate amount of input DNA (50 ng or 100 ng) and DNA concentration determination method (fluorometry or qPCR-based).

## Run Size Considerations

Kits contain enough reagents for 16, 48 or 96 reactions total, including control reactions using the provided Enrichment Control DNA (ECD). Each run that uses independently-prepared reagent master mixes should include one ECD control enrichment reaction.

The following protocol includes volumes appropriate for 12-sample runs. When planning a run size different from 12 samples, you will need to adjust volumes of components accordingly. Calculate the amount of each solution needed for the number of reactions in your run, plus 2 reactions excess for the restriction digestion steps and 1 reaction excess for the

## 2 Sample Preparation

### Run Time Considerations

remaining steps. For example, for a 16-sample run, calculate amounts of each solution by multiplying the single reaction value by 18 for restriction digestion steps and by 17 for hybridization and later steps.

A 96-reaction kit contains enough reagents to prepare master mixes for eight runs of 12 samples each for a total of 96 samples. When processing samples using runs with fewer than 12 samples, some reagents may be depleted before 96 samples are run.

A 48-reaction kit contains enough reagents to prepare master mixes for four runs of 12 samples each, for a total of 48 samples. When processing samples using runs with fewer than 12 samples, some reagents may be depleted before 48 samples are run.

A 16-reaction kit contains enough reagents to prepare master mix for one run of 16 samples. When processing samples using runs with fewer than 16 samples, some reagents may be depleted before 16 samples are run.

## Run Time Considerations

Before you begin, refer to the Certificate of Analysis provided with your kit to determine the hybridization duration appropriate for your design. After reviewing the duration of this and other steps in the protocol, plan the start time for your experiment accordingly.

Designs containing <20,000 probes use a 2-hour hybridization time, and DNA digestion through PCR steps (see [Figure 1](#)) are typically run in the same day. Designs containing >20,000 probes use a 16-hour hybridization time, which is typically completed overnight, with the DNA digestion step started in the afternoon.

## Step 1. Digest genomic DNA with restriction enzymes

In this step, gDNA samples are digested by 16 different restriction enzymes, in the format of eight double-digests, to create a library of gDNA restriction fragments. Fifty (50) ng of genomic DNA is split among the eight double-digestion reactions, with excess DNA added to allow for pipetting losses (see [step 2](#)).

The protocol below presents instructions for a 12-reaction run size, but runs may include up to 96 samples (including one ECD control sample). See [page 17](#) for run size considerations and guidelines for adjusting reagent amounts when using a different run size.

- 1 Determine the precise DNA concentration for each sample using the fluorometry-based Qubit dsDNA BR Assay or PicoGreen staining kit. Follow the manufacturer's instructions for the kits and instruments.

### NOTE

For FFPE-derived samples, determine the concentration of amplifiable DNA and assess the DNA quality in each sample using Agilent's qPCR-based NGS FFPE QC Kit.

- 2 Prepare the DNA samples for the run in a 0.2-ml tube strip. For 12-reaction runs, prepare 11 gDNA samples (see [step a](#) and [step b](#) below) and one Enrichment Control DNA sample (see [step c](#) below).
  - a Dilute each gDNA sample to concentration of 1.8 ng/μl in 10 mM Tris buffer (pH 8.5).
  - b Dispense 32 μl of each gDNA sample prepared in [step a](#) into the appropriate well of the tube strip. Store the DNA sample strip on ice.

### NOTE

For FFPE-derived samples, use the guidelines on [page 54](#) to determine the optimal amount of input DNA and optimal method of DNA concentration determination to use at this step.

For FFPE-derived DNA samples that require use of 100 ng DNA in the target enrichment reaction, use 32 μl of a 3.6 ng/μl dilution of the sample DNA for this step.

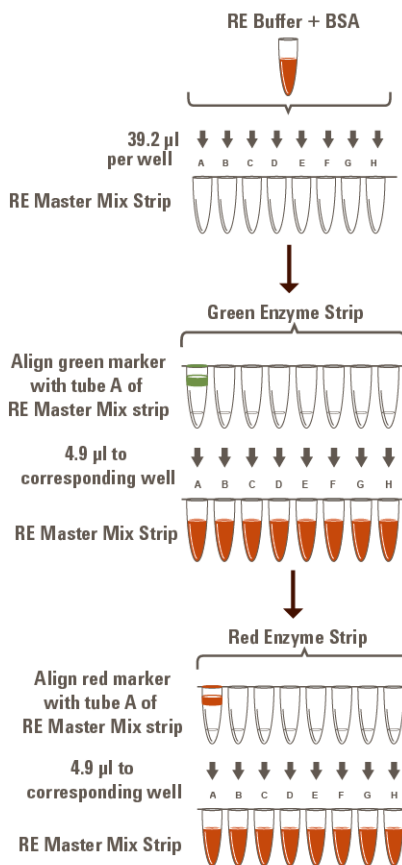
- c Dispense 32 μl of the supplied Enrichment Control DNA (ECD) into a separate well of the tube strip. Store the DNA sample strip on ice until it is used in [step 5](#) on [page 23](#).

## 2 Sample Preparation

### Step 1. Digest genomic DNA with restriction enzymes

#### 3 Prepare the Restriction Enzyme Master Mix strip.

The gDNA is digested in eight different restriction reactions, each containing two restriction enzymes. **The 16 restriction enzymes are provided in two 8-well strip tubes that are distinguished by red and green color markers.** Enzymes are combined from corresponding wells of the red- and green-marked strip tubes, along with restriction buffer and BSA to make eight different RE Master Mixes. **Figure 2** illustrates how to prepare the 8-well Restriction Enzyme Master Mix strip for a 12-sample run using the steps detailed on [page 21](#).



**Figure 2** Preparation of the Restriction Enzyme Master Mix Strip for 12-sample run.

## Step 1. Digest genomic DNA with restriction enzymes

- a Combine the amounts of RE Buffer and BSA Solution indicated in the table below in a 1.5-ml tube. Mix by vortexing briefly.

| Reagent             | Volume for 1 Reaction         | Volume for 12 Reactions (includes excess) |
|---------------------|-------------------------------|---|
| RE Buffer           | 24.6 $\mu$ l                  | 344 $\mu$ l                               |
| BSA Solution        | 0.64 $\mu$ l                  | 9 $\mu$ l                                 |
| <b>Total Volume</b> | <b>25.2 <math>\mu</math>l</b> | <b>353 <math>\mu</math>l</b>              |

- b To begin preparation of the Restriction Enzyme Master Mix Strip, dispense the appropriate volume of the RE Buffer/BSA mixture to each well of an 8-well strip tube.

| Reagent               | Volume for 1 Reaction | Volume for 12 Reactions (includes excess) |
|-----------------------|-----------------------|---|
| RE Buffer/BSA mixture | 2.8 $\mu$ l           | 39.2 $\mu$ l                              |

**CAUTION**

It is important to use the restriction enzyme tube strip in the proper orientation when preparing the RE Master Mixes as described below. The red or green color marker on the tube strip and cap strip is positioned adjacent to well A of each enzyme strip.

- c Using a multichannel pipette, add the appropriate volume of each enzyme from the Green Enzyme Strip, with green marker aligned with tube A, to corresponding tubes A to H of the Restriction Enzyme Master Mix Strip.

| Reagent                            | Volume for 1 Reaction | Volume for 12 Reactions (includes excess) |
|------------------------------------|-----------------------|---|
| RE Enzymes from Green Enzyme Strip | 0.35 $\mu$ l          | 4.9 $\mu$ l                               |

## 2 Sample Preparation

### Step 1. Digest genomic DNA with restriction enzymes

- d** Using a multichannel pipette, add the appropriate volume of each enzyme from the Red Enzyme Strip, with red marker aligned with tube A, to each corresponding tube A to H of the same Restriction Enzyme Master Mix Strip.

| Reagent                          | Volume for 1 Reaction | Volume for 12 Reactions (includes excess) |
|----------------------------------|-----------------------|---|
| RE Enzymes from Red Enzyme Strip | 0.35 $\mu$ l          | 4.9 $\mu$ l                               |

- e** Mix by gentle vortexing and then spin briefly.
- f** Keep the Restriction Enzyme Master Mix Strip on ice until it is used in [step 4](#).
- 4** Aliquot the Restriction Enzyme Master Mixes to the rows of a 96-well plate to be used as the restriction digest reaction plate.
- a** Align the Restriction Enzyme Master Mix Strip, prepared in [step 3](#), along the vertical side of a 96-well PCR plate as shown below.
- b** Using a multichannel pipette, carefully distribute 3.5  $\mu$ l of each RE master mix row-wise into each well of the plate.

For runs with >12 samples, continue distributing 3.5  $\mu$ l from the same RE Master Mix strip row-wise into each well of the additional plates.

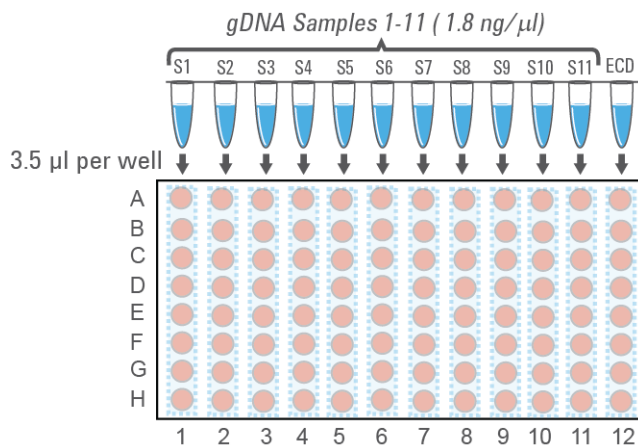
Visually inspect pipette tips for equal volumes before dispensing to the plate(s).



## Step 1. Digest genomic DNA with restriction enzymes

Each row of the 96-well plate now contains 3.5  $\mu$ l per well of the same restriction enzyme combination.

- 5 Aliquot DNA samples into the 96-well Restriction Digest Reaction Plate(s).
  - a Align the DNA sample strip, prepared in [step 2](#) (containing 11 gDNA samples and the ECD sample), along the horizontal side of the digestion reaction plate as shown below.



- b Carefully distribute 3.5  $\mu$ l of DNA samples column-wise into each well of the digestion reaction plate.
 

If using a multichannel pipette, visually inspect pipette tips for equal volumes before dispensing.

Change tips after pipetting the DNA samples into each digestion reaction mix to prevent cross-contamination of restriction enzymes.
  - c Seal the plate thoroughly with adhesive plastic film.
- 6 Carefully vortex the plate to mix the digestion reactions.
- 7 Briefly spin the plate in a plate centrifuge.

Wells of the prepared 96-well plate now contain complete 7- $\mu$ l restriction digestion reactions. In this format, each column corresponds to one DNA sample digested in eight different restriction reactions.

## 2 Sample Preparation

### Step 1. Digest genomic DNA with restriction enzymes

- 8 Place the Restriction Digest Reaction Plate in a thermal cycler and run the program in [Table 5](#), using a heated lid.

**Table 5** Thermal cycler program for HaloPlex HS restriction digestion

| Step   | Temperature | Time       |
|--------|-------------|------------|
| Step 1 | 37°C        | 30 minutes |
| Step 2 | 4°C         | Hold       |

#### NOTE

Do **not** pool the eight restriction digests for a single DNA sample at this time. Restriction enzymes are still active and will catalyze inappropriate cleavage events if DNA samples are pooled before enzyme inactivation. DNA samples are pooled during the hybridization step on [page 30](#), upon which restriction enzymes are inactivated by the reaction conditions.



## Step 1. Digest genomic DNA with restriction enzymes

- 9 Validate the restriction digestion reaction by electrophoretic analysis of the Enrichment Control DNA (ECD) reactions.

Keep the Restriction Digest Reaction Plate on ice during validation.

- a Briefly spin the digestion reaction plate to collect the digested DNA at the bottom of each well.
- b Transfer 4  $\mu$ l of each ECD digestion reaction from wells of the digestion reaction plate to fresh 0.2-ml PCR tubes.
- c Incubate the removed 4- $\mu$ l samples at 80°C for 5 minutes to inactivate the restriction enzymes.
- d Analyze the prepared samples using microfluidic electrophoresis on the 2100 Bioanalyzer (see [page 26](#)) or on the 4200 or 2200 TapeStation (see [page 27](#)) or by gel electrophoresis (see [page 28](#)).

The ECD sample contains genomic DNA mixed with an 800-bp PCR product that contains restriction sites for all the enzymes used in the digestion protocol. When analyzing validation results, the undigested control should have gDNA bands at >2.5 kbp and a PCR product band at 800 bp. Each of the eight digested ECD samples should have a smear of gDNA restriction fragments between 100 and 2500 bp, overlaid with three predominant bands at approximately 125, 225 and 450 bp. These three bands correspond to the 800-bp PCR product-derived restriction fragments, and precise sizes will differ after digestion in each of the eight RE master mixes.

**NOTE**

In addition to the three predominant bands at approximately 125, 225 and 450 bp, you may detect additional, minor bands in the digested ECD sample lanes.

Successful digestion is indicated by the appearance of the three predominant bands. The presence of additional minor bands, with relative abundance similar to the additional bands visible in [Figure 3](#), [Figure 4](#), and [Figure 5](#) does not impact enrichment results.

It is acceptable for band intensities in digestion reaction B to be slightly reduced, compared to the other digestion reactions.

## 2 Sample Preparation

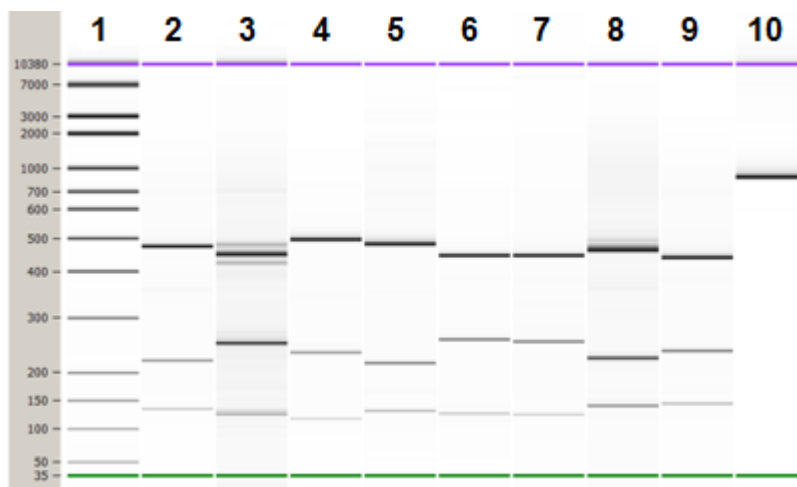
### Step 1. Digest genomic DNA with restriction enzymes

#### Option 1: Validation by 2100 Bioanalyzer analysis

Use a High Sensitivity DNA Kit (p/n 5067-4626) and the 2100 Bioanalyzer system with 2100 Expert Software (version B.02.07 or higher required to run the High Sensitivity Kit). See the reagent kit guide for general Bioanalyzer system setup instructions.

- Prepare an undigested DNA gel control by combining 1  $\mu$ l of the Enrichment Control DNA stock solution and 1  $\mu$ l of nuclease-free water.
- Prepare the chip, samples and ladder as instructed in the reagent kit guide, using 1  $\mu$ l of each ECD sample and undigested DNA control dilution for the analysis.
- When loading samples on the chip, load the DNA ladder in the ladder sample well marked on the chip. Load the eight ECD digest samples (A to H) in sample wells 1 to 8, and load the undigested ECD sample in sample well 9. Do not run the undigested ECD control in sample well 1.
- Place the prepared chip into the 2100 Bioanalyzer instrument and start the run within five minutes after preparation.

See [Figure 3](#) for sample Bioanalyzer electrophoresis results.



**Figure 3** Validation of restriction digestion by 2100 Bioanalyzer system analysis. Lane 1: 50-bp DNA ladder, Lanes 2-9: ECD digestion reactions A–H, Lane 10: Undigested Enrichment Control DNA.

**Option 2: Validation by 4200 TapeStation or 2200 TapeStation analysis**

Use a High Sensitivity D1000 ScreenTape and reagent kit. For more information to do this step, see the appropriate TapeStation user manual at [www.genomics.agilent.com](http://www.genomics.agilent.com).

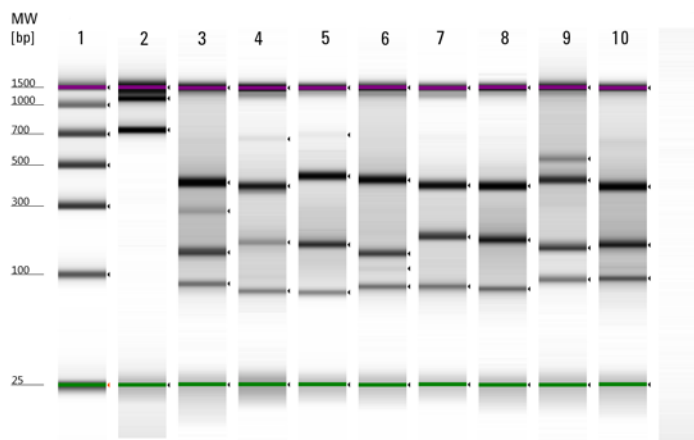
- Prepare an undigested DNA gel control by combining 1  $\mu$ l of the Enrichment Control DNA solution and 1  $\mu$ l of nuclease-free water.
- Prepare the TapeStation samples as instructed in the instrument user manual. Use 2  $\mu$ l of each ECD sample diluted with 2  $\mu$ l of High Sensitivity D1000 sample buffer in separate wells of a tube strip for the analysis.

**CAUTION**

Make sure that you thoroughly mix the combined DNA and High Sensitivity D1000 sample buffer on a vortex mixer for 5 seconds for accurate results.

- Load the sample tube strip, the High Sensitivity D1000 ScreenTape, and loading tips into the TapeStation as instructed in the user manual. Start the run.

See [Figure 4](#) for sample TapeStation electrophoresis results.



**Figure 4** Validation of restriction digestion by 2200 TapeStation analysis. Lane 1: High-Sensitivity Ladder, Lane 2: Undigested Enrichment Control DNA, Lanes 3–10: ECD digestion reactions A–H.

## 2 Sample Preparation

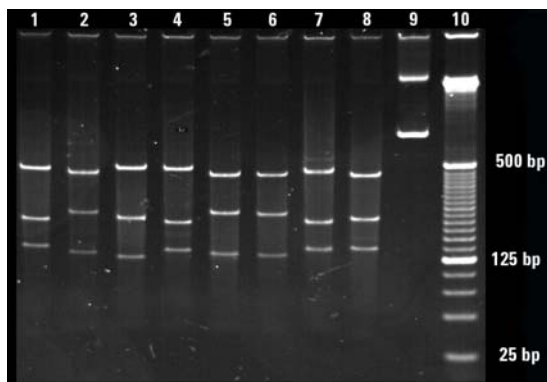
### Step 1. Digest genomic DNA with restriction enzymes

#### Option 3: Validation by gel electrophoresis

Use a Novex 6% polyacrylamide TBE pre-cast gel and 1X Novex TBE Running Buffer. For more information to do this step, consult the manufacturer's recommendations.

- Prepare an undigested DNA gel control by combining 0.8  $\mu$ l of the Enrichment Control DNA stock solution and 3.2  $\mu$ l of nuclease-free water.
- Add 1  $\mu$ l of Novex Hi-Density TBE Sample Buffer (5X) to each 4- $\mu$ l ECD sample.
- Load 5  $\mu$ l of each sample on the gel. In one or more adjacent lanes, load 200 ng of a 50-bp DNA ladder.
- Run the gel at 210 V for approximately 15 minutes.
- Stain the gel in 3X GelRed Nucleic Acid Stain for 10 minutes, and visualize bands under UV radiation.

See [Figure 5](#) for sample gel results.



**Figure 5** Validation of restriction digestion by gel electrophoresis. Lanes 1–8: ECD digestion reactions A–H, Lane 9: Undigested Enrichment Control DNA, Lane 10: 25-bp DNA ladder.

#### Stopping Point

If you do not continue to the next step, samples may be stored at  $-20^{\circ}\text{C}$  for long-term storage. There are no more long-term stopping points until after the PCR amplification step on [page 40](#).

## Step 2. Hybridize digested DNA to HaloPlex HS or ClearSeq HS probes

In this step, the collection of gDNA restriction fragments is hybridized to the HaloPlex HS or ClearSeq HS probe library. During the hybridization process, molecular barcodes and Illumina sequencing motifs, including index sequences, are incorporated into the targeted fragments.

HaloPlex HS and ClearSeq HS probes are designed to hybridize selectively to fragments originating from target regions of the genome and to direct circularization of the targeted DNA fragments. The duration of the hybridization reaction is determined by the probe density of your design. Refer to the Certificate of Analysis provided with your kit to determine the hybridization conditions appropriate for your design.

- 1 Prepare a Hybridization Master Mix by combining the reagents in [Table 6](#). Mix well by gentle vortexing, then spin the tube briefly.

**Table 6** Hybridization Master Mix

| Reagent                             | Volume for 1 Reaction       | Volume for 12 Reactions (includes excess) |
|-------------------------------------|-----------------------------|---|
| Hybridization Solution              | 34 $\mu$ l                  | 442 $\mu$ l                               |
| HaloPlex HS or<br>ClearSeq HS Probe | 5 $\mu$ l                   | 65 $\mu$ l                                |
| <b>Total Volume</b>                 | <b>39 <math>\mu</math>l</b> | <b>507 <math>\mu</math>l</b>              |

- 2 Distribute 39  $\mu$ l of the Hybridization Master Mix to each of 12 0.2-ml tubes.
- 3 Add 5  $\mu$ l of the appropriate HaloPlex HS Indexing Primer to each tube containing Hybridization Master Mix.

Be sure to add only one specific Indexing Primer to each hybridization tube, using different indexes for each sample to be multiplexed. Record the identity of the Indexing Primer added to each tube for later sequence analysis.

### NOTE

Components needed to incorporate a unique molecular barcode sequence into each target fragment prior to amplification are included in the HaloPlex HS Indexing Primer solutions and do not need to be added separately.

## 2 Sample Preparation

### Step 2. Hybridize digested DNA to HaloPlex HS or ClearSeq HS probes

- 4 Transfer digested DNA samples from the 96-well Restriction Digest Reaction Plate(s) directly into the hybridization reaction tubes prepared in [step 3](#).

Transfer all eight digestion reactions that correspond to one DNA sample into the appropriate hybridization reaction tube. After addition of each individual digest reaction to the hybridization solution, mix by pipetting before adding the next digest reaction to ensure complete inactivation of the enzymes.

#### CAUTION

Do **not** pool the digestion samples before adding to the hybridization reaction mixture as restriction enzymes are still active and may catalyze inappropriate cleavage events.

---

After pooling, each 100- $\mu$ l hybridization reaction contains the following components:

- 39  $\mu$ l Hybridization Master Mix
- 5  $\mu$ l HaloPlex HS Indexing Primer
- approximately 56  $\mu$ l pooled digested DNA samples

#### NOTE

Due to partial evaporation of samples, you may recover less than 7  $\mu$ l of each restriction digest. Minor reductions to the digested DNA pool volume will not impact hybridization performance; you do not need to compensate for any sample evaporation volume losses in the final pool.

---

For the ECD sample, add 2.5  $\mu$ l of each digestion reaction and 36  $\mu$ l of nuclease-free water to the mixture of Hybridization master mix and Indexing Primer from [step 3](#), for a total volume of 100  $\mu$ l.

- 5 Vortex the mixtures briefly and then spin tubes briefly.

## Step 2. Hybridize digested DNA to HaloPlex HS or ClearSeq HS probes

- 6 Place the hybridization reaction tubes in a thermal cycler. Run the appropriate program in [Table 7](#), using the hybridization duration listed on the Certificate of Analysis.

Use a heated lid. Do **not** include a low-temperature hold step in the thermal cycler program. Incubation at 58°C for more than the indicated time is not recommended.

**Table 7** Thermal cycler program for HaloPlex HS probe hybridization

| Step   | Temperature | Time (Duration of Step)                                      |  |
|--------|-------------|--|--|
|        |             | Designs with <20,000 probes<br>(see Certificate of Analysis) | Designs with >20,000 probes<br>(see Certificate of Analysis) |
| Step 1 | 95°C        | 5 minutes  | 5 minutes  |
| Step 2 | 58°C        | 2 hours  | 16 hours   |

- 7 At least 30 minutes before the end of the Hybridization incubation, remove reagents to be used in upcoming protocol steps from cold storage and allow the solutions to reach the appropriate temperature:
- From –20°C storage, remove the HS Hybridization Stop Solution, HS Ligation Solution, HS Capture Solution, HS Wash 1 Solution, HS Wash 2 Solution, and HS Elution Buffer to room temperature.

**NOTE**

Be sure to bring the HS Hybridization Stop Solution to room temperature before use. The high viscosity of this solution impedes accurate pipetting at lower temperatures.

- From +4°C storage, remove the Agencourt AMPure XP magnetic beads and the Dynabeads MyOne Streptavidin T1 magnetic beads to room temperature.
- From –20°C storage, remove the 10 mM rATP and HS DNA Ligase to ice.

## 2 Sample Preparation

### Step 3. Remove the hybridization buffer

### Step 3. Remove the hybridization buffer

In this step the hybridization buffer is removed, in preparation for the ligation step, using AMPure XP beads.

#### NOTE

The AMPure XP beads and HS Hybridization Stop Solution must be at room temperature for the purification steps. Remove these reagents to room temperature at least 30 minutes before each use.

- 1 Prepare 400  $\mu$ l of 70% ethanol per sample, plus excess, for use in [step 8](#).
- 2 Mix the AMPure XP bead suspension well, until the suspension appears homogeneous and consistent in color.
- 3 For each sample to be purified, prepare a bead mix by combining 20  $\mu$ l of HS Hybridization Stop Solution and 80  $\mu$ l of the homogeneous AMPure XP bead suspension. Mix well, until the bead suspension mixture appears homogeneous.

#### NOTE

Pipette the viscous HS Hybridization Stop Solution slowly to ensure that the full volume is aspirated and dispensed. Verify that any residual volume of this solution or mixture containing the solution has been dispensed from the pipette tip.

- 4 Add 100  $\mu$ l of the homogeneous stop solution bead suspension prepared in [step 3](#) to each 100- $\mu$ l hybridized library sample. Mix by pipetting up and down 10 times using a 200- $\mu$ l pipette set to 150  $\mu$ l.
- 5 Incubate samples for 5 minutes at room temperature with continuous shaking at 1300 rpm.  
Make sure the samples are properly mixing in the wells during the 5-minute incubation.

#### NOTE

During the 5-minute incubation period, prepare ligation reagents as instructed in [step 1](#) and [step 2](#) on [page 34](#).

- 6 Spin briefly to collect the liquid, then place the tubes in the magnetic plate. Wait for the solution to clear (approximately 5 minutes).
- 7 Keep the tubes in the magnetic plate. Carefully remove and discard the cleared solution from each tube. Do not touch the beads while removing the solution.



## Step 3. Remove the hybridization buffer

- 8 Continue to keep the tubes in the magnetic plate while you add 200  $\mu$ l of 70% ethanol into the tubes.

Use fresh 70% ethanol for optimal results.

- 9 Wait for 1 minute to allow any disturbed beads to settle, then remove and discard the ethanol.

- 10 Repeat [step 8](#) and [step 9](#) once for a total of two washes.

- 11 Spin the samples briefly, then place the tubes in the magnetic plate and remove any residual ethanol with a 10- $\mu$ l volume pipette.

- 12 Air-dry the samples by keeping the tubes with open lids at room temperature until any residual ethanol evaporates (approximately 1–5 minutes).

**CAUTION**

Take care not to overdry the beads. Overdrying makes the beads difficult to resuspend in [step 4](#) on [page 34](#) and decreases elution efficiency.

---

## 2 Sample Preparation

### Step 4. Ligate the circularized fragments

#### Step 4. Ligate the circularized fragments

In this step, DNA ligation reagents are added to the circularized hybridization products to close nicks in the probe-target DNA hybrids.

- 1 Prepare a 1 mM rATP solution by diluting the provided 10 mM rATP 1:10 with nuclease-free water.

For 12-sample runs, combine 1  $\mu\text{l}$  of the provided 10 mM rATP and 9  $\mu\text{l}$  of nuclease-free water.

- 2 Prepare a DNA ligation master mix by combining the reagents in the following table.

Mix the components thoroughly by gentle vortexing then spin the tube briefly.

**Table 8** Preparation of DNA ligation master mix

| Reagent   | Volume for 1 Reaction              | Volume for 12 Reactions (includes excess) |
|---|------------------------------------|---|
| HS Ligation Solution                            | 10 $\mu\text{l}$                   | 130 $\mu\text{l}$                         |
| 1 mM rATP (prepared in <a href="#">step 1</a> ) | 0.6 $\mu\text{l}$                  | 7.8 $\mu\text{l}$                         |
| Nuclease-free water                             | 39.4 $\mu\text{l}$                 | 512.2 $\mu\text{l}$                       |
| <b>Total Volume</b>                             | <b>50 <math>\mu\text{l}</math></b> | <b>650 <math>\mu\text{l}</math></b>       |

- 3 Remove the DNA sample tubes from the magnetic plate (see [step 12](#) on [page 33](#)), then add 50  $\mu\text{l}$  of the DNA ligation master mix to each sample.
- 4 Resuspend the beads thoroughly by pipetting up and down 10 times using a 100- $\mu\text{l}$  multichannel pipette set to 40  $\mu\text{l}$ .  
Visually inspect the beads to verify complete resuspension; if needed, do additional rounds of pipetting up and down until the beads are in a homogeneous suspension.
- 5 Incubate the samples for 2 minutes at room temperature to elute the DNA samples from the beads.
- 6 Spin briefly to collect the liquid, then place the tubes in the magnetic plate. Wait for the solution to clear (approximately 5 minutes).

## Step 4. Ligate the circularized fragments

- 7 For each sample, transfer 47.5  $\mu$ l of the cleared supernatant to a fresh tube.

Pipette slowly to minimize transfer of beads with the supernatant.

- 8 Add 2.5  $\mu$ l of HS DNA Ligase to each sample tube. Mix by gentle vortexing and then spin briefly to collect the liquid.
- 9 Incubate the tubes in a thermal cycler at 55°C for 10 minutes, using a heated lid.

Do **not** include a low-temperature hold step in the thermal cycler program following the 10-minute incubation.

During the 10-minute incubation, prepare the following components for later protocol steps:

- Dynabeads MyOne Streptavidin T1 magnetic beads (prepare as described in [step 1](#) and [step 2](#) on [page 36](#).)
- Wash 1 Mix (prepare as described in [step 3](#) on [page 36](#).)

## Step 5. Capture the target DNA

In this step, the circularized target DNA-HaloPlex HS probe hybrids, containing biotin, are captured on streptavidin beads.

- 1 Vigorously resuspend the Dynabeads MyOne Streptavidin T1 magnetic beads on a vortex mixer. The magnetic beads settle during storage.
- 2 For each sample in the run prepare 40 µl (1 Volume) of Dynabeads MyOne Streptavidin T1 magnetic beads in HS Capture Solution, using the steps below:
  - a Transfer the appropriate volume of bead suspension to a 1.5-ml tube.

| Reagent   | Volume for 1 Reaction | Volume for 12 Reactions (includes excess) |
|---|-----------------------|---|
| Dynabeads MyOne Streptavidin T1 bead suspension | 40 µl                 | 520 µl                                    |

- b Put the tube into a 1.5 ml tube-compatible magnetic rack until the solution has cleared (approximately 5 minutes).
    - c Carefully remove and discard the cleared supernatant using a pipette.
    - d Add an equivalent volume of HS Capture Solution to the beads and resuspend by pipetting up and down.

| Reagent             | Volume for 1 Reaction | Volume for 12 Reactions (includes excess) |
|---------------------|-----------------------|---|
| HS Capture Solution | 40 µl                 | 520 µl                                    |

- 3 Prepare Wash 1 Mix for use on [page 38](#) using the following steps:
  - a Prepare 10 µl per sample, plus excess, of fresh 1 M NaOH for use in [step b](#).  
Prepare the 1 M NaOH solution from a 10 M NaOH stock solution.

### CAUTION

Using high-quality NaOH is critical for optimal DNA sample quality.

- Do not use stock NaOH solutions that were stored at concentrations below 10 M to prepare the 1 M NaOH solution.
- Keep the 1 M NaOH solution container sealed when not in use, especially when processing large numbers of samples per run.

**b** Prepare Wash 1 Mix by combining the reagents in the following table.

| Reagent  | Volume for 1 Reaction | Volume for 12 Reactions<br>(includes excess) |
|--|-----------------------|--|
| HS Wash 1 Solution                             | 90 µl                 | 1170 µl                                      |
| 1 M NaOH (prepared in <a href="#">step a</a> ) | 10 µl                 | 130 µl                                       |
| <b>Total Volume</b>                            | <b>100 µl</b>         | <b>1300 µl</b>                               |

**4** Remove the ligation reactions from the thermal cycler and immediately add 40 µl of the HS Capture Solution + streptavidin bead mixture (prepared in [step 2](#)) to each 50-µl ligation reaction.

**NOTE**

When adding beads to the ligation reactions, visually inspect the bead preparation to ensure a homogeneous suspension with no aggregated bead mass at the bottom of the tube. If aggregation is present, thoroughly resuspend the beads by vortexing and pipetting up and down before use.

**5** Incubate samples for 15 minutes at room temperature with continuous shaking.

Make sure the samples are properly mixing in the wells during the 15-minute incubation.

During the 15-minute incubation, prepare the PCR Master Mix as described on [page 39](#).

**6** Briefly spin the tubes in a desktop centrifuge and then transfer the tubes to the magnetic plate.

**7** Wait for the solution to clear, then remove and discard the supernatant using a pipette.

## 2 Sample Preparation

### Step 5. Capture the target DNA

- 8** Wash the bead-bound samples:
  - a** Remove the capture reaction tubes from the magnetic plate and add 100  $\mu$ l of the Wash 1 Mix prepared in [step 3](#) to each tube.
  - b** Resuspend the beads thoroughly by pipetting up and down 10 times using a 100- $\mu$ l multichannel pipette set to 80  $\mu$ l then briefly spin the tubes in a desktop centrifuge.
  - c** Incubate the samples at room temperature for 1 minute.
  - d** Transfer the tubes to the magnetic plate. Wait for the solution to clear, then remove and discard the supernatant using a pipette.
  - e** Add 150  $\mu$ l of the provided HS Wash Solution 2 to each tube.
  - f** Resuspend the beads thoroughly by pipetting up and down 10 times, then briefly spin the tubes in a desktop centrifuge.
  - g** Transfer the tubes to the magnetic plate. Wait for the solution to clear, then remove and discard the supernatant using a pipette.

## Step 6. PCR amplify the captured target library

In this step, the captured target libraries are amplified by PCR.

- 1 Prepare the PCR master mix, on ice, by combining the reagents in the following table.

**Table 9** Preparation of PCR master mix

| Reagent                             | Volume for 1 reaction        | Volume for 12 reactions (includes excess) |
|-------------------------------------|------------------------------|---|
| Nuclease-free water                 | 53.2 $\mu$ l                 | 691.6 $\mu$ l                             |
| Herculase II Reaction Buffer        | 30 $\mu$ l                   | 390 $\mu$ l                               |
| dNTPs (100 mM, 25 mM for each dNTP) | 0.8 $\mu$ l                  | 10.4 $\mu$ l                              |
| Primer 1                            | 4 $\mu$ l                    | 52 $\mu$ l                                |
| Primer 2                            | 8 $\mu$ l                    | 104 $\mu$ l                               |
| Herculase II Fusion DNA Polymerase  | 4 $\mu$ l                    | 52 $\mu$ l                                |
| <b>Total</b>                        | <b>100 <math>\mu</math>l</b> | <b>1300 <math>\mu</math>l</b>             |

- 2 Mix the master mix components by gentle vortexing. Store the mixture on ice until it is used in [step 3](#).

### NOTE

The PCR Master Mix is typically prepared during the 15-minute capture step on [page 37](#).

- 3 Remove the captured and washed DNA sample tubes from the magnetic plate (see [step g](#) on [page 38](#)), then transfer 100  $\mu$ l of PCR Master Mix to each sample tube. Mix by pipetting up and down until the beads are in a homogeneous suspension.

## 2 Sample Preparation

### Step 6. PCR amplify the captured target library

- 4 Place the amplification reaction tubes in a thermal cycler and run the program in [Table 10](#), using a heated lid.

The optimal amplification cycle number varies for each HaloPlex HS or ClearSeq HS probe design. Consult the Certificate of Analysis provided with your kit for the PCR cycling recommendation for your probe.

**Table 10** HaloPlex HS post-capture DNA amplification PCR program

| Segment | Number of Cycles                                 | Temperature | Time       |
|---------|--|-------------|------------|
| 1       | 1  | 98°C        | 2 minutes  |
| 2       | Obtain cycle number from Certificate of Analysis | 98°C        | 30 seconds |
|         |  | 60°C        | 30 seconds |
|         |  | 72°C        | 1 minute   |
| 3       | 1  | 72°C        | 10 minutes |
| 4       | 1  | 8°C         | Hold       |

During amplification, remove the Agencourt AMPure XP magnetic beads from +4°C storage, and allow the beads to come to room temperature for use on [page 41](#).

- 5 When the PCR program is complete, briefly spin the tubes in a desktop centrifuge and then transfer the tubes to the magnetic plate.
- 6 Wait for the solution to clear, then remove 40 µl of each PCR reaction sample to a fresh 0.2-ml tube for purification.

Store the remaining volume of each sample at –20°C for troubleshooting.

#### Stopping Point

If you do not continue to the next step, PCR products may be stored at –20°C for up to 72 hours or at 8°C overnight. For best results, however, purify PCR products as soon as possible.



## Step 7. Purify the amplified target library

In this step, the amplified target DNA is purified using AMPure XP beads.

- 1** Verify that the Agencourt AMPure XP beads have been kept at room temperature for at least 30 minutes.
- 2** Prepare 400  $\mu\text{l}$  of 70% ethanol per sample, plus excess, for use in [step 9](#).
- 3** Mix the AMPure XP bead suspension well, until the suspension appears homogeneous and consistent in color.
- 4** For each sample to be purified, prepare a bead mix by combining 40  $\mu\text{l}$  of nuclease-free water and 100  $\mu\text{l}$  of the homogeneous AMPure XP bead suspension. Mix well, until the bead mix suspension appears homogeneous.
- 5** Add 140  $\mu\text{l}$  of the homogeneous bead suspension prepared in [step 4](#) to each 40- $\mu\text{l}$  amplified library sample. Vortex thoroughly.  
Using this bead-to-sample volume ratio is imperative to ensure optimal purification results.
- 6** Incubate samples for 5 minutes at room temperature with continuous shaking.  
Make sure the samples are properly mixing in the wells during the 5-minute incubation.
- 7** Spin briefly to collect the liquid, then place the tubes in the magnetic plate. Wait for the solution to clear (approximately 5 minutes).
- 8** Keep the tubes in the magnetic plate. Carefully remove and discard the cleared solution from each tube using a 200- $\mu\text{l}$  pipette set to 180  $\mu\text{l}$ . Do not touch the beads while removing the solution.
- 9** Continue to keep the tubes in the magnetic plate while you add 200  $\mu\text{l}$  of 70% ethanol into the tubes.  
Use fresh 70% ethanol for optimal results.
- 10** Wait for 1 minute to allow any disturbed beads to settle, then remove the ethanol using a 200- $\mu\text{l}$  pipette set to 200  $\mu\text{l}$ .
- 11** Repeat [step 9](#) and [step 10](#) once for a total of two washes.
- 12** Spin the samples briefly, then place the tubes in the magnetic plate and remove any residual ethanol with a 10- $\mu\text{l}$  volume pipette.

## 2 Sample Preparation

### Step 7. Purify the amplified target library

**13** Air-dry the samples by keeping the tubes with open lids at room temperature until any residual ethanol evaporates (approximately 1–5 minutes).

Make sure all ethanol has evaporated before continuing.

**14** Remove tubes from the magnetic plate and add 45  $\mu$ l of HS Elution Buffer to each sample.

**15** Mix thoroughly by pipetting up and down 10 times using a 100- $\mu$ l pipette set to 30  $\mu$ l.

**16** Incubate the tubes at room temperature for 2 minutes to allow DNA elution.

**17** Put the tubes in the magnetic plate and leave for 2 minutes or until the solution is clear.

**18** Remove the cleared supernatant (approximately 40  $\mu$ l) to a fresh tube. You can discard the beads at this time.

#### Stopping Point

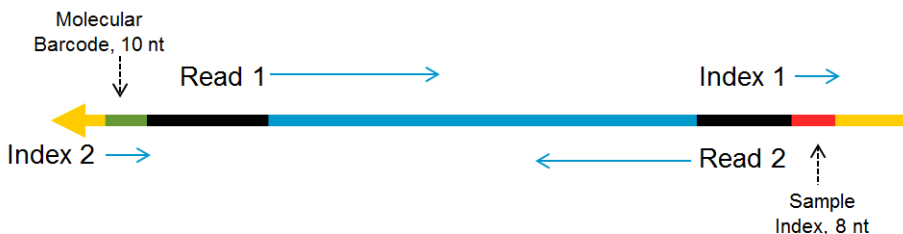
If you do not continue to the next step, samples may be stored at  $-20^{\circ}\text{C}$  for long-term storage (up to one year). Avoid subjecting the stored DNA samples to multiple freeze-thaw cycles.

## Step 8. Validate enrichment and quantify enriched target DNA

Prior to sample pooling and sequencing sample preparation, validate enrichment and quantify the enriched target DNA in each library sample by microfluidic analysis using the 2100 Bioanalyzer (see [page 44](#)) or the 2200 or 4200 TapeStation (see [page 45](#)).

### Expected Results

Each amplicon in the prepared library contains one target insert surrounded by sequence motifs required for multiplexed sequencing using the Illumina platform, as shown in [Figure 6](#).



**Figure 6** Content of HaloPlex HS-enriched target amplicons. Each amplicon contains one target insert (blue) surrounded by the Illumina paired-end sequencing elements (black), the sample index (red), the molecular barcode (green) and the library bridge PCR primers (yellow).

The amplicons should be approximately 190 to 640 bp in length, with the majority of products sized approximately 225 to 540 bp. Although the DNA fragment size distribution may vary for different DNA samples and different probe designs, use the constant size range of 175 to 625 bp for quantitation of the enriched target DNA in each sample. Any spurious DNA products outside of the 175 to 625 bp size range should be excluded from the target DNA quantitation results.

## 2 Sample Preparation

### Step 8. Validate enrichment and quantify enriched target DNA

#### Option 1: Analysis using the 2100 Bioanalyzer

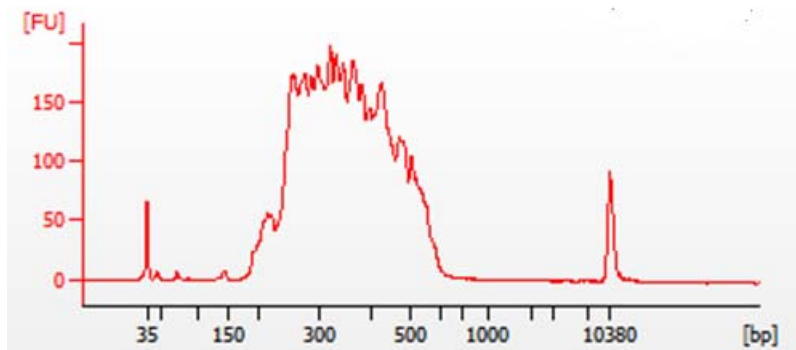
Use a Bioanalyzer High Sensitivity DNA Assay kit and the 2100 Bioanalyzer with 2100 Expert Software (version B.02.07 or higher required to run the High Sensitivity Kit). See the reagent kit guide for general Bioanalyzer instrument and assay setup instructions.

- 1 Prepare the chip, samples and ladder as instructed in the reagent kit guide, using 1  $\mu\text{l}$  of enriched library sample for the analysis.
- 2 Load the prepared chip into the 2100 Bioanalyzer and start the run within five minutes after preparation.
- 3 Analyze the electropherogram for each sample using the analysis guidelines on [page 46](#).

See [Figure 7](#) for a sample Bioanalyzer system electropherogram.

#### NOTE

If the concentration determined by Bioanalyzer analysis is  $> 10 \text{ ng}/\mu\text{l}$ , repeat the analysis using a 1:10 dilution of the sample. Dilute 1  $\mu\text{l}$  of the sample in 9  $\mu\text{l}$  of 10 mM Tris, 1 mM EDTA and then mix well by vortexing at 2000 rpm on the IKA vortex supplied with the Bioanalyzer before analyzing the diluted sample.



**Figure 7** Validation of HaloPlex HS enrichment by 2100 Bioanalyzer analysis.

**Option 2: Analysis using the 4200 TapeStation or 2200 TapeStation**

Use a High Sensitivity D1000 ScreenTape and reagent kit. For more information to do this step, see the appropriate TapeStation user manual at [www.genomics.agilent.com](http://www.genomics.agilent.com).

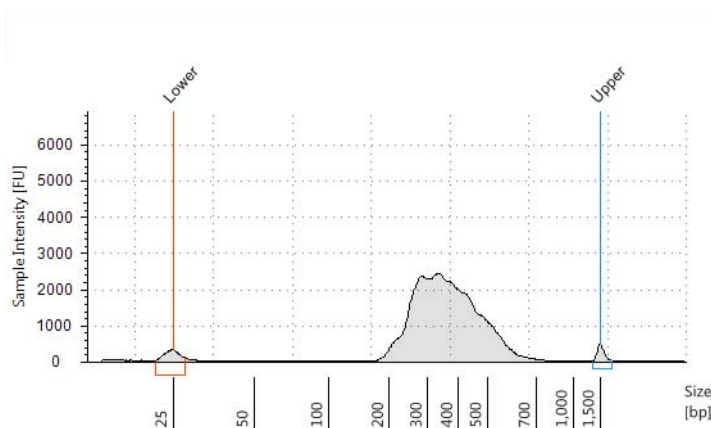
- 1 Prepare the TapeStation samples as instructed in the instrument user manual. Use 2  $\mu$ l of each enriched library sample diluted with 2  $\mu$ l of High Sensitivity D1000 sample buffer in separate wells of a tube strip for the analysis.

**CAUTION**

Make sure that you thoroughly mix the combined DNA sample and High Sensitivity D1000 sample buffer on a vortex mixer for 5 seconds for accurate results.

- 2 Load the sample tube strip, the High Sensitivity D1000 ScreenTape, and loading tips into the TapeStation as instructed in the user manual. Start the run.
- 3 Analyze the electropherogram for each sample using the analysis guidelines on [page 46](#).

See [Figure 8](#) for a sample TapeStation electropherogram.



**Figure 8** Validation of HaloPlex HS enrichment by 2200 TapeStation analysis.

## 2 Sample Preparation

### Step 8. Validate enrichment and quantify enriched target DNA

#### Analysis of Electropherogram Results

- Check that the electropherogram shows a peak fragment size between approximately 225 and 540 bp.
- Determine the concentration of enriched target DNA in the sample by integration under the peak between 175 and 625 bp. Peaks at <175 bp may be observed, but should be excluded from quantitation.
- Some designs may generate a peak at about 140 bp. This peak is associated with an adaptor-dimer product which will cluster and generate sequence that does not map to the genome. If the molar fraction of the 140 bp peak is greater than 10%, do another round of AMPure purification after pooling samples. First, pool equimolar amounts of libraries to be multiplexed, using concentrations determined for the 175–625 bp peak of each sample. Using 40 µl of the pooled libraries, purify the DNA using AMPure XP beads according to the protocol on [page 41](#).

## Step 9. Pool samples for multiplexed sequencing

Use the following guidelines to design your sample pooling and sequencing strategy:

- Use the Bioanalyzer- or TapeStation-measured concentration of 175-625 bp products in each sample to pool equimolar amounts of differentially indexed samples in order to optimize the use of sequencing capacity.
- The final HaloPlex HS enrichment pool is ready for direct sequencing using standard Illumina paired-end primers and chemistry on the Illumina HiSeq, MiSeq, or NextSeq platform.

For the MiSeq platform, set up the run using Illumina Experiment Manager (IEM) using the steps detailed on [page 48](#) to [page 50](#) to generate a custom sample sheet. Also see the guidelines in bullet points below.

For the HiSeq and NextSeq platforms, set up the run using the instrument's user interface, following the guidelines on [page 52](#). Also see the guidelines in bullet points below.

- Use 100 + 100 bp or 150 + 150 bp paired-end sequencing, depending on the selection made during probe design. Since the read length affects maximum achievable coverage, check the design report to verify read length selected in probe design.
- The sample-level index (i7) requires an 8-nt index read, and the degenerate molecular barcode (i5) requires a 10-nt index read. For complete i7 index sequence information, see [Table 18](#) on page 61 (for indexes in yellow plates or white-capped tubes) or [Table 19](#) on page 62 (for indexes in orange plates). Enter NNNNNNNNNN for the i5 degenerate molecular barcode for all samples.
- Before aligning reads to the reference genome, trim the reads from Illumina adaptor sequences. See [page 52](#) for information on Agilent's SureCall data analysis software, which may be used for this task. If you are not using SureCall software for analysis, you must manually trim the first base from Read 2, since this base originates from non-target DNA.

## MiSeq platform sequencing run setup guidelines

Use the Illumina Experiment Manager (IEM) software to generate a custom Sample Sheet according to the guidelines below. Once a Sample Sheet has been generated, index sequences need to be manually changed to the HaloPlex HS indexes used for each sample. See the [Reference](#) chapter, starting on [page 57](#), for nucleotide sequences of the HaloPlex HS system indexes.

### Setting up a custom Sample Sheet:

- In the IEM software, create a Sample Sheet for the MiSeq platform using the following Workflow selections.
  - Under **Category**, select *Other*.
  - Under **Application**, select *FASTQ Only*.
- On the **Workflow Parameters** screen, enter the run information, making sure to specify the key parameters highlighted below. In the *Cycles Read 1* and *Cycles Read 2* fields, enter 151 for 150 bp read length designs, or enter 101 for 100 bp read length designs. Clear all of the *FASTQ Only Workflow-Specific Settings* checkboxes. Make sure that both adaptor-trimming checkboxes (circled below) are cleared, since these are selected by default.

Illumina Experiment Manager

### Sample Sheet Wizard - Workflow Parameters

**FASTQ Only Run Settings:**

- Reagent Cartridge Barcode\*: MSXXXXXXXX300
- Sample Prep Kit: TruSeq HT
- Index Reads:  0  1  2
- Experiment Name: Test Project
- Investigator Name: Test
- Description: Test
- Date: 10/ 7/2015
- Read Type:  Paired End  Single Read
- Cycles Read 1: 151
- Cycles Read 2: 151

**FASTQ Only Workflow-Specific Settings:**

- Custom Primer for Read 1
- Custom Primer for Index
- Custom Primer for Read 2
- Reverse Complement
- Use Adapter Trimming
- Use Adapter Trimming Read 2

\* - required field



- 3** Using the **Sample Sheet Wizard**, set up a New Plate, entering the required information for each sample to be sequenced. In the **I7 Sequence** column, assign each sample to any of the Illumina i7 indexes. The index will be corrected to a HaloPlex index at a later stage.

Likewise, in the **I5 Sequence** column, assign any of the Illumina i5 indexes, to be corrected to the degenerate molecular barcode at a later stage.

The screenshot shows the 'Sample Sheet Wizard - Sample Selection' window in the Illumina Experiment Manager. It displays a table of samples to be included in the sample sheet. The columns are: Sample ID\*, Sample Name, Plate, Well, Index1 (I7)\*, I7 Sequence, Index2 (I5)\*, I5 Sequence, Sample Project, and Description. The 'I7 Sequence' and 'I5 Sequence' columns are circled in red in the original image.

| Sample ID* | Sample Name | Plate  | Well | Index1 (I7)* | I7 Sequence | Index2 (I5)* | I5 Sequence | Sample Project | Description |
|------------|-------------|--------|------|--------------|-------------|--------------|-------------|----------------|-------------|
| 1          | 1           | Plate1 | A01  | D701         | ATTACTCG    | D501         | TATAGCCT    |                |             |
| 2          | 2           | Plate1 | A02  | D702         | TCCGGAGA    | D501         | TATAGCCT    |                |             |
| 3          | 3           | Plate1 | A03  | D703         | CGCTCATT    | D501         | TATAGCCT    |                |             |
| 4          | 4           | Plate1 | A04  | D704         | GAGATTCC    | D501         | TATAGCCT    |                |             |
| 5          | 5           | Plate1 | A05  | D705         | ATTCAGAA    | D501         | TATAGCCT    |                |             |
| 6          | 6           | Plate1 | A06  | D706         | GAATTCGT    | D501         | TATAGCCT    |                |             |

- 4** Finish the sample sheet setup tasks and save the sample sheet file.

## 2 Sample Preparation

### MiSeq platform sequencing run setup guidelines

#### Editing the Sample Sheet to include HaloPlex indexes and molecular barcodes

#### CAUTION

This guide includes information for 96-reaction kits containing two different indexing primer plates. **Verify that you are referencing the sequence information appropriate for the index plate supplied with your kit before you proceed.**

See [page 61](#) for 96-reaction kits supplied with a yellow plate or 16-reaction kits supplied with white-capped tubes.

See [page 62](#) for 96-reaction kits or 48-reaction kits supplied with an orange plate.

- 1 Open the Sample Sheet file in a text editor and edit the i7 and i5 index information for each sample in columns 5–8 (highlighted below).
  - In column 5 under **I7\_Index\_ID**, enter the name of the HaloPlex HS index assigned to the sample. In column 6 under **index**, enter the corresponding HaloPlex HS Index sequence. See [page 61](#) or [page 62](#) for nucleotide sequences of the HaloPlex HS indexes A01 through H12.
  - In column 7 under **I5\_Index\_ID**, enter *MolBC* for all samples. In column 8 under **index2**, enter text “NNNNNNNNNN” for all samples to represent the degenerate 10-nucleotide molecular barcode used to tag each fragment in the hybridization step.

| [Header]          |               |              |             |             |          |             |            |                |             |
|-------------------|---------------|--------------|-------------|-------------|----------|-------------|------------|----------------|-------------|
| ITEMFileVersion   | 4             |              |             |             |          |             |            |                |             |
| Investigator Name | Test          |              |             |             |          |             |            |                |             |
| Experiment Name   | Test Project  |              |             |             |          |             |            |                |             |
| Date              | 10/8/2015     |              |             |             |          |             |            |                |             |
| Workflow          | GenerateFASTQ |              |             |             |          |             |            |                |             |
| Application       | FASTQ Only    |              |             |             |          |             |            |                |             |
| Assay             | HaloPlexHS    |              |             |             |          |             |            |                |             |
| Description       | Test          |              |             |             |          |             |            |                |             |
| Chemistry         | Amplicon      |              |             |             |          |             |            |                |             |
| [Reads]           |               |              |             |             |          |             |            |                |             |
|                   | 151           |              |             |             |          |             |            |                |             |
|                   | 151           |              |             |             |          |             |            |                |             |
| [Settings]        |               |              |             |             |          |             |            |                |             |
| ReverseComplement | 0             |              |             |             |          |             |            |                |             |
| [Data]            |               |              |             |             |          |             |            |                |             |
| Sample_ID         | Sample_Name   | Sample_Plate | Sample_Well | I7_Index_ID | Index    | I5_Index_ID | index2     | Sample_Project | Description |
| 1                 | 1             | Plate1       | A01         | A01         | ATGCCTAA | MolBC       | NNNNNNNNNN |                |             |
| 2                 | 2             | Plate1       | A02         | A02         | AGCAGGAA | MolBC       | NNNNNNNNNN |                |             |
| 3                 | 3             | Plate1       | A03         | A03         | ATCATTCC | MolBC       | NNNNNNNNNN |                |             |
|                   |               |              | A04         | A04         | ATCACC   | MolBC       | NNNNNNNNNN |                |             |

**Figure 9** Sample sheet for HaloPlex HS library sample sequencing

- 2 Save the edited Sample Sheet in an appropriate file location for use in the MiSeq platform run.

### Additional MiSeq platform sequencing run setup requirements

Before the first use of the MiSeq instrument for HaloPlex HS library sequencing, you must adjust the MiSeq Reporter settings to generate FASTQ files for index reads. Once changed, this setting is retained for future runs.

To change this setting, open the file **MiSeq Reporter.exe.config**. Under the **<appSettings>** tag, add **<add key="CreateFastqForIndexReads" value="1"/>**. You must restart the instrument for this setting change to take effect.

#### NOTE

If you are using the MiSeqDx platform, run the instrument in research mode to make changes to MiSeq Reporter settings. If research mode is not available on your instrument, you may need to upgrade the system to include the dual boot configuration to allow settings changes in research mode.

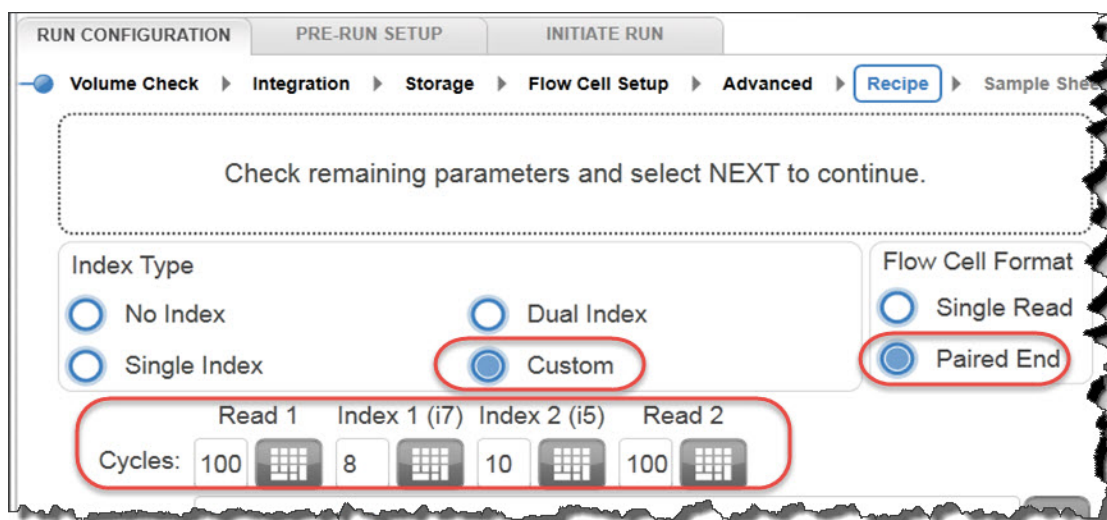
---

## 2 Sample Preparation

### HiSeq and NextSeq platform sequencing run setup guidelines

## HiSeq and NextSeq platform sequencing run setup guidelines

Set up sequencing runs using the instrument control software interface. A sample run setup for the HiSeq platform using 100 + 100 bp paired-end sequencing is shown below. For probes designed for 150 + 150 bp paired-end sequencing, modify the *Cycles* settings for *Read 1* and *Read 2* accordingly. If using the NextSeq platform, locate the same parameters on the *Run Setup* screen, then use the settings shown in HiSeq platform example below.



## Sequence analysis resources

Agilent's SureCall data analysis software is available to simplify the sequencing data analysis workflow after HaloPlex HS target enrichment. To learn more about this resource and download the SureCall software free of charge, visit [www.agilent.com/genomics/surecall](http://www.agilent.com/genomics/surecall).



### 3 Appendix: Using FFPE-derived DNA Samples

HaloPlex HS Protocol Modifications 54

Downstream Sequencing Modifications 55

FFPE-derived DNA samples may be used in HaloPlex HS Target Enrichment protocol after making the minor protocol modifications detailed in this chapter, based on the measured integrity of the FFPE sample DNA.

The Agilent NGS FFPE QC Kit provides a qPCR-based assay for DNA sample integrity determination. Results include the precise quantity of amplifiable DNA in the sample and a  $\Delta\Delta Cq$  DNA integrity score. HaloPlex HS protocol modifications based on  $\Delta\Delta Cq$  scores for individual samples are detailed in this chapter.

#### NOTE

When designing a new HaloPlex HS probe in SureDesign for use with FFPE-derived samples, select the **Optimize for FFPE Samples** checkbox on the *Tile Genes or Regions* screen. You must select **Show Advanced Design Options** when creating the design to use this design enhancement.

The HaloPlex HS protocol modifications and downstream sequencing modifications in this chapter are applicable to all probes designed either with or without using this design enhancement.



## HaloPlex HS Protocol Modifications

Before applying protocol modifications in this section, use the Agilent NGS FFPE QC Kit to determine the  $\Delta\Delta Cq$  normalized DNA integrity score and the quantity of amplifiable DNA for each FFPE DNA sample. For the complete Agilent NGS FFPE QC Kit protocol, go to [genomics.agilent.com](http://genomics.agilent.com) and search for document part number G9700-90000.

Once the  $\Delta\Delta Cq$  DNA integrity scores have been determined for each sample, modify the DNA input amount, if needed, as summarized in [Table 12](#).

**Table 12** HaloPlex HS protocol modifications based on DNA integrity score

| Protocol Step and Parameter       | non-FFPE Samples            | FFPE Samples                |  |   |
|-----------------------------------|-----------------------------|-----------------------------|--|---|
|                                   |                             | $\Delta\Delta Cq \leq 1.3$  | $\Delta\Delta Cq$ between 1.3 and 1.5                  | $\Delta\Delta Cq$ between 1.5 and 2.5*                  |
| DNA input for Library Preparation | 50 ng, based on Qubit Assay | 50 ng, based on Qubit Assay | 50 ng of amplifiable DNA, based on qPCR quantification | 100 ng of amplifiable DNA, based on qPCR quantification |

\* FFPE samples with  $\Delta\Delta Cq$  values  $>2.5$  may be used for HaloPlex HS Target Enrichment, but enrichment results and sequencing performance may be impacted. For best results, use the same protocol modifications provided for samples with  $\Delta\Delta Cq$  values between 1.5 and 2.5.

## Downstream Sequencing Modifications

Determine the amount of extra sequencing output required for FFPE DNA samples.

- 1 Find the Total Sequenceable Design Size for your probe in the HaloPlex Design Report.
- 2 Use the guidelines in [Table 13](#) to determine the recommended amount of sequencing output for each HaloPlex HS-enriched FFPE sample based on the  $\Delta\Delta Cq$  DNA integrity score.

**Table 13** Recommended sequencing augmentation for FFPE-derived DNA samples

| $\Delta\Delta Cq$ value | Recommended amount sequencing output for FFPE-derived sample |
|-------------------------|--|
| $\leq 1.3$              | 300–600× Total Sequenceable Design Size                      |
| between 1.3 and 1.5     | 600–1200× Total Sequenceable Design Size                     |
| between 1.5 and 2.5*    | 1200× Total Sequenceable Design Size                         |

\* FFPE samples with  $\Delta\Delta Cq$  values  $>2.5$  may be used for HaloPlex HS Target Enrichment, but enrichment results and sequencing performance may be impacted. For best results, use the same protocol modifications provided for samples with  $\Delta\Delta Cq$  values between 1.5 and 2.5.

### NOTE

A general guideline for non-FFPE samples is to collect sequencing output equivalent to approximately 200× the Total Sequenceable Design Size.

For example, if the Total Sequenceable Design Size is 1 Mb, an FFPE sample with  $\Delta\Delta Cq$  score of 1.4 requires 600–1200 Mb of sequencing output to achieve coverage similar to that expected for an intact DNA sample with 200 Mb of sequencing output.

### **3 Appendix: Using FFPE-derived DNA Samples**





## 4 Reference

Kit Contents 58

Nucleotide Sequences of HaloPlex HS Indexes 61



## Kit Contents

The HaloPlex HS Target Enrichment System is supplied using the part numbers listed below:

**Table 14** HaloPlex HS and ClearSeq HS Target Enrichment System Kit Part Numbers

| Design Type   | Part Numbers for HaloPlex HS Target Enrichment System-ILM*<br>(Store at -20°C) |                                     |              |
|---|--|-------------------------------------|--------------|
|   | 96 Reactions   | 48 Reactions                        | 16 Reactions |
| Custom 1-500 kb (up to 20,000 probes), ILMFST         | 5190-7847 OR 5190-7849 <sup>†</sup>  | 5190-7835 OR 5190-7837 <sup>†</sup> | —            |
| Custom 0.5-2.5 Mb OR <0.5 Mb with >20,000 probes, ILM | 5190-7851 OR 5190-7853 <sup>†</sup>  | 5190-7839 OR 5190-7841 <sup>†</sup> | —            |
| Custom 2.6 Mb-5 Mb, ILM                               | 5190-7855 OR 5190-7857 <sup>†</sup>  | 5190-7843 OR 5190-7845 <sup>†</sup> | —            |
| ClearSeq Cancer HS, ILM                               | G9933B   | —                                   | G9933A       |
| ClearSeq AML HS, ILM                                  | G9963B   | —                                   | G9963A       |
| ClearSeq Cardiomyopathy HS, ILM                       | G9943B   | —                                   | G9943A       |
| ClearSeq ICCG HS, ILM                                 | 5190-9200  | 5190-9182                           | —            |
| ClearSeq Connective Disorder HS, ILM                  | 5190-9220  | 5190-9186                           | —            |
| ClearSeq Arrhythmia HS, ILM                           | 5190-9198  | 5190-9180                           | —            |
| ClearSeq Noonan Syndrome HS, ILM                      | 5190-9222  | 5190-9188                           | —            |
| ClearSeq Chromosome X HS, ILM                         | 5190-9218  | 5190-9184                           | —            |

\* See Table 15 for list of included reagents.

† Part number 5190-7835, 5190-7847, 5190-7839, 5190-7851, 5190-7843 or 5190-7855 is provided for the first order of a specific HaloPlex HS Custom Probe design. Re-order kits, containing previously-purchased Custom Probe designs, include part number 5190-7837, 5190-7849, 5190-7841, 5190-7853, 5190-7845 or 5190-7857.

The contents of the HaloPlex HS Target Enrichment kits are detailed in the table below:

**Table 15** HaloPlex HS Target Enrichment System Kit Contents

| Included Reagents                  | 16 Reaction Kit                                   | 48 Reaction Kit  | 96 Reaction Kit  |
|------------------------------------|---|--|--|
| RE Buffer                          | tube with clear cap                               | tube with clear cap  | bottle   |
| BSA Solution                       | tube with clear cap                               | tube with clear cap  | tube with clear cap  |
| Enzyme Strip 1                     | 8-well strip with green label                     | 8-well strip with green label                                    | 8-well strip with green label  |
| Enzyme Strip 2                     | 8-well strip with red label                       | 8-well strip with red label                                      | 8-well strip with red label  |
| Enrichment Control DNA             | tube with orange cap                              | tube with orange cap   | tube with orange cap   |
| Hybridization Solution             | tube with clear cap                               | bottle   | bottle   |
| HS Hybridization Stop Solution     | tube with clear cap                               | tube with clear cap  | bottle   |
| HS Ligation Solution               | tube with black cap                               | tube with black cap  | tube with black cap  |
| HS DNA Ligase                      | tube with green cap                               | tube with green cap  | tube with green cap  |
| 10 mM rATP                         | tube with clear cap                               | tube with clear cap  | tube with clear cap  |
| HS Wash 1 Solution                 | bottle  | bottle   | bottle   |
| HS Wash 2 Solution                 | bottle  | bottle   | bottle   |
| HS Capture Solution                | tube with clear cap                               | bottle   | bottle   |
| HS Elution Buffer                  | tube with purple cap                              | bottle   | bottle   |
| Primer 1                           | tube with yellow cap                              | tube with yellow cap   | tube with yellow cap   |
| Primer 2                           | tube with blue cap                                | tube with blue cap   | tube with blue cap   |
| Herculase II Fusion DNA Polymerase | tube with clear cap                               | tube with clear cap  | tube with clear cap  |
| Herculase II Reaction Buffer       | tube with black cap                               | bottle   | bottle   |
| 100 mM dNTP Mix                    | tube with clear cap                               | tube with clear cap  | tube with clear cap  |
| HaloPlex HS or ClearSeq HS Probe   | tube with pink cap                                | tube with pink cap   | tube with pink cap   |
| HaloPlex HS Indexing Primers       | Indexing Primers A01 to H02 in white-capped tubes | Indexing Primers A01 to H06 in orange 96-well plate <sup>*</sup> | Indexing Primers A01 to H12 in yellow or orange 96-well plate <sup>†</sup> |

\* See Table 16 for a plate map.

† See Table 17 for a plate map.

## 4 Reference

### Kit Contents

**Table 16** Plate map for HaloPlex HS Indexing Primers A01 through H06 provided with 48-reaction kits; wells in columns 7 through 12 are empty

|   | 1   | 2   | 3   | 4   | 5   | 6   | 7 | 8 | 9 | 10 | 11 | 12 |
|---|-----|-----|-----|-----|-----|-----|---|---|---|----|----|----|
| A | A01 | A02 | A03 | A04 | A05 | A06 | – | – | – | –  | –  | –  |
| B | B01 | B02 | B03 | B04 | B05 | B06 | – | – | – | –  | –  | –  |
| C | C01 | C02 | C03 | C04 | C05 | C06 | – | – | – | –  | –  | –  |
| D | D01 | D02 | D03 | D04 | D05 | D06 | – | – | – | –  | –  | –  |
| E | E01 | E02 | E03 | E04 | E05 | E06 | – | – | – | –  | –  | –  |
| F | F01 | F02 | F03 | F04 | F05 | F06 | – | – | – | –  | –  | –  |
| G | G01 | G02 | G03 | G04 | G05 | G06 | – | – | – | –  | –  | –  |
| H | H01 | H02 | H03 | H04 | H05 | H06 | – | – | – | –  | –  | –  |

**Table 17** Plate map for HaloPlex HS Indexing Primers A01 through H12 provided with 96-reaction kits

|   | 1   | 2   | 3   | 4   | 5   | 6   | 7   | 8   | 9   | 10  | 11  | 12  |
|---|-----|-----|-----|-----|-----|-----|-----|-----|-----|-----|-----|-----|
| A | A01 | A02 | A03 | A04 | A05 | A06 | A07 | A08 | A09 | A10 | A11 | A12 |
| B | B01 | B02 | B03 | B04 | B05 | B06 | B07 | B08 | B09 | B10 | B11 | B12 |
| C | C01 | C02 | C03 | C04 | C05 | C06 | C07 | C08 | C09 | C10 | C11 | C12 |
| D | D01 | D02 | D03 | D04 | D05 | D06 | D07 | D08 | D09 | D10 | D11 | D12 |
| E | E01 | E02 | E03 | E04 | E05 | E06 | E07 | E08 | E09 | E10 | E11 | E12 |
| F | F01 | F02 | F03 | F04 | F05 | F06 | F07 | F08 | F09 | F10 | F11 | F12 |
| G | G01 | G02 | G03 | G04 | G05 | G06 | G07 | G08 | G09 | G10 | G11 | G12 |
| H | H01 | H02 | H03 | H04 | H05 | H06 | H07 | H08 | H09 | H10 | H11 | H12 |

## Nucleotide Sequences of HaloPlex HS Indexes

The nucleotide sequence of the 8-nucleotide index portion of each HaloPlex HS Indexing Primer is provided in the tables below. For 96-Reaction kits, make sure to refer to the appropriate sequence table, based on indexing primer plate color: for yellow plates, see [Table 18](#) below; for orange plates, see [Table 19](#) on page 62. The sequence of index F09 (only) differs in the yellow and orange indexing primer plates.

**Table 18 HaloPlex HS Indexes provided in yellow plates or white-capped tubes**

| Index | Sequence | Index | Sequence | Index | Sequence | Index | Sequence |
|-------|----------|-------|----------|-------|----------|-------|----------|
| A01   | ATGCCTAA | A04   | AACTCACC | A07   | ACGTATCA | A10   | AATGTTGC |
| B01   | GAATCTGA | B04   | GCTAACGA | B07   | GTCTGTCA | B10   | TGAAGAGA |
| C01   | AACGTGAT | C04   | CAGATCTG | C07   | CTAAGGTC | C10   | AGATCGCA |
| D01   | CACTTCGA | D04   | ATCCTGTA | D07   | CGACACAC | D10   | AAGAGATC |
| E01   | GCCAAGAC | E04   | CTGTAGCC | E07   | CCGTGAGA | E10   | CAACCACA |
| F01   | GACTAGTA | F04   | GCTCGGTA | F07   | GTGTTCTA | F10   | TGGAACAA |
| G01   | ATTGGCTC | G04   | ACACGACC | G07   | CAATGGAA | G10   | CCTCTATC |
| H01   | GATGAATC | H04   | AGTCACTA | H07   | AGCACCTC | H10   | ACAGATTC |
| A02   | AGCAGGAA | A05   | AACGCTTA | A08   | CAGCGTTA | A11   | CCAGTTCA |
| B02   | GAGCTGAA | B05   | GGAGAACA | B08   | TAGGATGA | B11   | TGGCTTCA |
| C02   | AAACATCG | C05   | CATCAAGT | C08   | AGTGGTCA | C11   | CGACTGGA |
| D02   | GAGTTAGC | D05   | AAGGTACA | D08   | ACAGCAGA | D11   | CAAGACTA |
| E02   | CGAACTTA | E05   | CGCTGATC | E08   | CATACCAA | E11   | CCTCCTGA |
| F02   | GATAGACA | F05   | GGTGCGAA | F08   | TATCAGCA | F11   | TGGTGGTA |
| G02   | AAGGACAC | G05   | CCTAATCC | G08   | ATAGCGAC | G11   | AACAACCA |
| H02   | GACAGTGC | H05   | CTGAGCCA | H08   | ACGCTCGA | H11   | AATCCGTC |
| A03   | ATCATTCC | A06   | AGCCATGC | A09   | CTCAATGA | A12   | CAAGGAGC |
| B03   | GCCACATA | B06   | GTACGCAA | B09   | TCCGTCTA | B12   | TTCACGCA |
| C03   | ACCACTGT | C06   | AGTACAAG | C09   | AGGCTAAC | C12   | CACCTTAC |
| D03   | CTGGCATA | D06   | ACATTGGC | D09   | CCATCCTC | D12   | AAGACGGA |
| E03   | ACCTCCAA | E06   | ATTGAGGA | E09   | AGATGTAC | E12   | ACACAGAA |
| F03   | GCGAGTAA | F06   | GTCGTAGA | F09   | TGACCGAT | F12   | GAACAGGC |
| G03   | ACTATGCA | G06   | AGAGTCAA | G09   | CCGAAGTA | G12   | AACCGAGA |
| H03   | CGGATTGC | H06   | CCGACAAC | H09   | CGCATACA | H12   | ACAAGCTA |

## 4 Reference

### Nucleotide Sequences of HaloPlex HS Indexes

**Table 19 HaloPlex HS Indexes provided in orange plates**

| Index | Sequence | Index | Sequence | Index | Sequence | Index | Sequence |
|-------|----------|-------|----------|-------|----------|-------|----------|
| A01   | ATGCCTAA | A04   | AACTCACC | A07   | ACGTATCA | A10   | AATGTTGC |
| B01   | GAATCTGA | B04   | GCTAACGA | B07   | GTCTGTCA | B10   | TGAAGAGA |
| C01   | AACGTGAT | C04   | CAGATCTG | C07   | CTAAGGTC | C10   | AGATCGCA |
| D01   | CACTTCGA | D04   | ATCCTGTA | D07   | CGACACAC | D10   | AAGAGATC |
| E01   | GCCAAGAC | E04   | CTGTAGCC | E07   | CCGTGAGA | E10   | CAACCACA |
| F01   | GACTAGTA | F04   | GCTCGGTA | F07   | GTGTTCTA | F10   | TGGAACAA |
| G01   | ATTGGCTC | G04   | ACACGACC | G07   | CAATGGAA | G10   | CCTCTATC |
| H01   | GATGAATC | H04   | AGTCACTA | H07   | AGCACCTC | H10   | ACAGATTC |
| A02   | AGCAGGAA | A05   | AACGCTTA | A08   | CAGCGTTA | A11   | CCAGTTCA |
| B02   | GAGCTGAA | B05   | GGAGAACA | B08   | TAGGATGA | B11   | TGGCTTCA |
| C02   | AAACATCG | C05   | CATCAAGT | C08   | AGTGGTCA | C11   | CGACTGGA |
| D02   | GAGTTAGC | D05   | AAGGTACA | D08   | ACAGCAGA | D11   | CAAGACTA |
| E02   | CGAACTTA | E05   | CGCTGATC | E08   | CATACCAA | E11   | CCTCCTGA |
| F02   | GATAGACA | F05   | GGTGCGAA | F08   | TATCAGCA | F11   | TGGTGGTA |
| G02   | AAGGACAC | G05   | CCTAATCC | G08   | ATAGCGAC | G11   | AACAACCA |
| H02   | GACAGTGC | H05   | CTGAGCCA | H08   | ACGCTCGA | H11   | AATCGGTC |
| A03   | ATCATTCC | A06   | AGCCATGC | A09   | CTCAATGA | A12   | CAAGGAGC |
| B03   | GCCACATA | B06   | GTACGCAA | B09   | TCCGTCTA | B12   | TTCACGCA |
| C03   | ACCACTGT | C06   | AGTACAAG | C09   | AGGCTAAC | C12   | CACCTTAC |
| D03   | CTGGCATA | D06   | ACATTGGC | D09   | CCATCCTC | D12   | AAGACGGA |
| E03   | ACCTCCAA | E06   | ATTGAGGA | E09   | AGATGTAC | E12   | ACACAGAA |
| F03   | GCGAGTAA | F06   | GTCGTAGA | F09   | TCTTCACA | F12   | GAACAGGC |
| G03   | ACTATGCA | G06   | AGAGTCAA | G09   | CCGAAGTA | G12   | AACCGAGA |
| H03   | CGGATTGC | H06   | CCGACAAC | H09   | CGCATACA | H12   | ACAAGCTA |

[www.agilent.com](http://www.agilent.com)

## In This Book

This guide contains information to run the HaloPlex HS Target Enrichment System protocol for the Illumina sequencing platform.

© Agilent Technologies, Inc. 2015, 2016

Version C1, December 2016



G9931-90000



**Agilent Technologies**