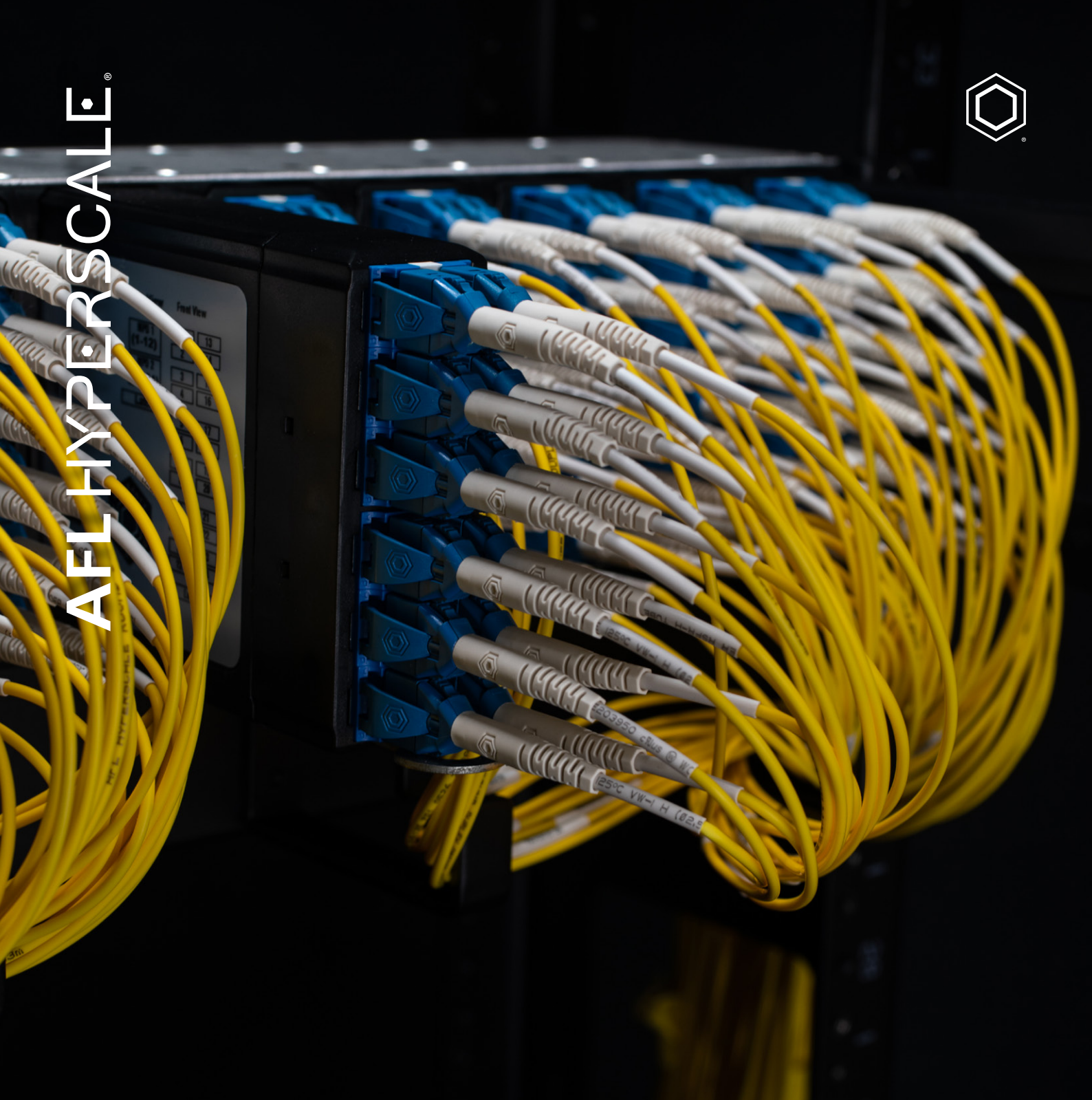


AFLHYPERSCALE®



Series

A Fast, Flexible Fiber Connectivity Platform For Data Centers

Ordering Guide

Contents

03 Introduction to the U-Series Platform

Ordering Process

05 U-Series Housings

U-Series 1RU Housing
U-Series 2RU Housing

06 U-Series Cassettes

U-Series MPO Fanout Cassettes
U-Series Splice Cassettes
U-Series Patch Plates
U-Series Pre-Terminated Cassettes

10 Assemblies

MPO Trunk Assemblies
LC Reversible Polarity Uniboot Patch Cord

12 25-Year Warranty

13 How to order

A Fast, Flexible Approach To Growing Data Center Networks

The U-Series solution can be deployed across hyperscale, enterprise, and colocation data centers to maximize fiber density, transmit fast network speeds, and simplify installations. For a straight-forward network design with minimal complexity, it also features our innovative Polarity F mapping, which removes the need for complex polarity drawings and troubleshooting in the field for a faster deployment.

This solution enables you to utilize high-capacity housings, easy-to-install cassettes, and high-performance assemblies to grow at the pace your business requires. Factory terminated and pre-tested components facilitate immediate plug-and-play deployment, reducing installation times by up to 75% while seamlessly paving the way for clear migration paths from 40GB/s to 400Gb/s and beyond. The U-Series platform is available with rack-mount and off-rack housing options, for ultimate network scaling flexibility.

We offer some of the best lead times globally for high-performance, custom pre-terminated assemblies with a 25-year network warranty (subject to terms and conditions) on installed networks.

AFL Hyperscale, your data center cabling and connectivity Partner



Fast Growing Networks

Scalable modular connectivity solutions that enable you to grow your fiber network quickly when your business needs it.



Simplified Design

New Polarity F Cassettes simplify every step of the process from design, to installation, to testing.



Projects Delivered On Time

Stock available across the globe, short lead times on customizable assemblies, and a full range of products that support rapid installations.



Experts In Quality

Our innovative technologies and high-quality products are developed with customer success at the heart.

www.aflhyperscale.com/solutions/network/modularconnectivity/u-series/

Ordering Process

3 Simple Steps to Plan Your High-Performance Network



Select Your **Housing**

Choose from 1RU or 2RU U-Series Housings.



Choose Your **Cassettes**

Decide between U-Series MPO, Splice, Patch or Pre-Terminated Cassettes.



Pick Your **Assemblies**

Select from our range of pre-terminated trunk cables, and fiber patch cords.

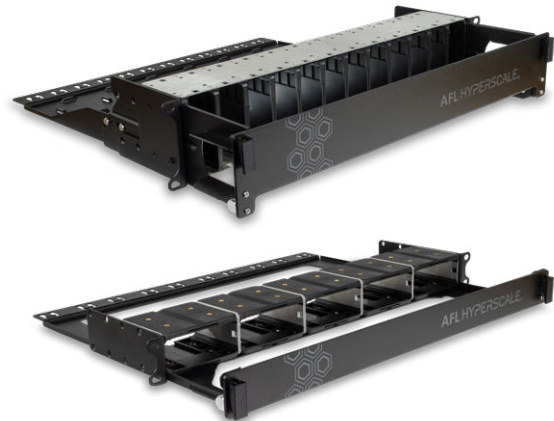


Select Your Housing

U-Series Housing

Product Overview

Achieve optimal network performance in a variety of data center and service provider applications with U-Series Housings. Compatible with a wide range of U-Series cassettes and adapter plates, this modular connectivity solution gives you the most flexible approach to building a high-density network with up to 144 LC ports (288 fibers) utilizing LC duplex in 2RU of space.



Features

Front and Rear Cable Management

- Easy access for efficient cable loading and patching
- Run assemblies to the left, right, top, or bottom of the housing depending on where you need to connect

Front and Rear Loadable Cassettes

- Easily accessible and facilitates faster installation

Easy Moves, Adds, and Changes (MACs)

- Cassettes can be locked in a parked or maintenance position for simplified patching

Customizable Labeling

- Effective identification for network maintenance, upgrades, and troubleshooting

Shallow-Depth Deployment

- Can be installed in shallow-depth cabinets (<300mm) with front and rear management removed

Technical Specifications

Unit Height	1RU	2RU
	Up to 5 U-Series Cassettes	Up to 12 U-Series Cassettes
Capacity	Maximum fiber density of up to: LC: 60 ports (120 fibers) MPO: 80 ports (960 fibers)	Maximum fiber density of up to: LC: 144 ports (288 fibers) MPO: 144 ports (1728 fibers)
Product Dimensions	Height: 44mm (2.8 inches) Width: 480mm (19 inches) Depth: 389mm (15.3 inches)	Height: 88mm (3.5 inches) Width: 480mm (19 inches) Depth: 502mm (19.8 inches)
Package Dimensions	Height: 70mm (1.7 inches) Width: 520mm (20.4 inches) Depth: 435mm (17.1 inches)	Height: 155mm (6.1 inches) Width: 520mm (20.4 inches) Depth: 315mm (12.4 inches)
Weight	Product weight: 1.6kg Packaged weight: 2kg	Product weight: 2.6kg Packaged weight: 3.2kg
Materials	ABS, CR4 Steel, Aluminium	ABS, CR4 Steel, Aluminium
Materials compliant to	RoHS, Reach / SVHC, UL 94V-0	RoHS, Reach / SVHC, UL 94V-0
Regional Availability	Global	Global

Ordering Information

Description	Part Number
AFL U-Series 1RU Housing, up to 5 Cassettes	FXUCXXBXXX-01BH
AFL U-Series 2RU Housing, up to 12 Cassettes	FXUCXXBXXX-02BH

Choose Your Cassette

U-Series MPO Fanout Cassettes

Product Overview

The U-Series MPO Fanout Cassettes offer scalability in a compact footprint that allows you to quickly build a high-density fiber optic infrastructure through plug-and-play installation. With cassettes that can be loaded to the front or rear of any U-Series housing, and available in a range of configurations, these cassettes enable seamless connections from your active equipment to your physical layer and supports migration speeds from 10G through to 400G and beyond.



Features

High-Density MPO to LC Cassettes

- Base-8, Base-12, Base-24 options available
- Compatible with all U-Series Housings
- Up to 12 LC ports (24 fibers) per cassette
- Multi-mode and Single mode cassette option available

Shuttered LC Adapters

- Greener solution by eliminating adapter dust caps
- Provide automatic laser eye safety
- Easy fault detection
- Facilitate faster patching

Low Loss Enabled by Fujikura MT Ferrule

- Ensures maximum reliability and mechanical performance

Polarity F

- Polarity managed in the cassette
- Same cassette orientation can be used at both ends of a link

Facilitates Moves, Adds, and Changes

- Cassettes can be locked in a parked or maintenance position for simplified patching

Technical Specifications

Fiber Types	SM, OM4
Fiber Counts Available	12 LC ports (24 fiber), 8 LC ports (16 fiber), 6 LC ports (12 fiber)
Polarity Mapping Available	Base 8/12: Polarity F (Polarity A, B, and C available on request)
Adapter Types	MPO (Male) to LC Shuttered Adapters
Cassette Material	ABS, CR4 Steel
Cassette Color	Black
Cassette Dimensions	Height: 87mm (3.4inches) Width: 30mm (1.2 inches) Depth: 160mm (6.3 inches)
Package Dimensions	Height: 140mm (5.5 inches) Width: 45mm (1.8 inches) Depth: 280mm (11 inches)
Weight	Product weight: 2.1kg Packaged weight: 2.8kg
Materials Compliant	RoHS, Reach/SVHC, UL 94V-0

Ordering Information

Description	Part Number	
Base-8	AFL U-Series Fanout Cassette, 16 Fiber, OM4, MPO (Male) Base-8 to LC (Aqua), Polarity F	A4UD16BPVA-05DL
	AFL U-Series Fanout Cassette, 16 Fiber, SM, MPO (Male) Base-8 to LC (Blue), Polarity F	A7UD16BPVA-05DL
	AFL U-Series Fanout Cassette, 24 Fiber, OM4, MPO (Male) Base-8 to LC (Aqua), Polarity F	A4UD24BPVA-05DM
	AFL U-Series Fanout Cassette, 24 Fiber, SM, MPO (Male) Base-8 to LC (Blue), Polarity F	A7UD24BPVA-05DM
Base-12	AFL U-Series Fanout Cassette, 12 Fiber, OM4, MPO (Male) Base-12 to LC (Aqua), Polarity F	A4UD12BPVA-05DE
	AFL U-Series Fanout Cassette, 12 Fiber, SM, MPO (Male) Base-12 to LC (Blue), Polarity F	A7UD12BPVA-05DE
	AFL U-Series Fanout Cassette, 24 Fiber, OM4, MPO (Male) Base-12 to LC (Aqua), Polarity F	A4UD24BPVA-05DE
	AFL U-Series Fanout Cassette, 24 Fiber, SM, MPO (Male) Base-12 to LC (Blue), Polarity F	A7UD24BPVA-05DE

Choose Your Cassette

U-Series Splice Cassettes

Product Overview

Our modular splice cassettes are ideal for dynamic, ever-changing infrastructures. This solution not only facilitates faster field splicing but also enables seamless Moves, Adds, and Changes (MACs) while allowing you to work away from the rack. Premium pre-loaded assemblies provide optimal optic performance across a 12 LC port (24 fiber) or 6 LC/SC port (12 fiber) interface.



Features

Pre-Loaded and Pre-Routed Pigtails

- Single fiber easy-strip pigtails can be spliced to loose-tube, tight buffered, or micro cables
- Ribbon can be mass fusion spliced to SpiderWeb® Ribbon, ISP, ISP/OSP cables, and other ribbon fiber cables

High-Density

- Up to 12 LC ports (24 fibers) with LC
- Single fiber or ribbon fiber mass fusion splicing

Shuttered LC Adapters

- Greener solution by eliminating adapter dust caps
- Provide automatic laser eye safety
- Easy fault detection
- Facilitate faster patching

Facilitates Moves, Adds, and Changes

- Cassettes can be locked in a parked or maintenance position for simplified patching

Technical Specifications

	Single Fiber Splice Cassette	Ribbon Fiber Mass Fusion Splice Cassette
Fiber Types	SM, OM4	SM
Fiber Counts Available	12 LC ports (24 fiber) 6 LC ports (12 fiber)	12 LC ports (24 fiber) 6 LC ports (12 fiber)
Adapter Types	LC, SC	LC
Cassette Material	ABS, CR4 Steel	ABS, CR4 Steel
Cassette Color	Black	Black
Cassette Dimensions	Height: 85mm (3.4 inches) Width: 30mm (1.2 inches) Depth: 220mm (8.7 inches)	Height: 87mm (3.4 inches) Width: 30mm (1.2 inches) Depth: 186mm (7.3 inches)
Packaging Dimensions	Height: 120mm (4.7 inches) Width: 38mm (1.5 inches) Depth: 245mm (9.6 inches)	Height: 135mm (5.3 inches) Width: 45mm (1.8 inches) Depth: 280mm (11 inches)
Weight	Product weight: 0.23kg Package weight: 0.33kg	Product weight: 0.27kg Package weight: 0.35kg
Materials Compliant	RoHS, Reach/SVHC, UL 94V-0	RoHS, Reach/SVHC, UL 94V-0
Suggested Splice Protectors	45mm Splice Protector, 3mm Diameter	FUJIKURA FP-05 Splice Protector Up to 12 Fibers 40/10mm
Gland entry / gland supplied and cable OD	M12 Gland for 3-6.8mm cable	M12 Gland for 3-6.8mm cable

Ordering Information

Description	Part Number
Single Fiber	AFL U-Series Splice Cassette, 12 Fiber, OM4, LC (Aqua) Loaded With Premium Easy-Strip Pigtails A4UD12BPAX-01AK
Single Fiber	AFL U-Series Splice Cassette, 12 Fiber, SM, LC (Blue) Loaded With Premium Easy-Strip Pigtails A7UD12BPAX-01AK
Single Fiber	AFL U-Series Splice Cassette, 24 Fiber, OM4, LC (Aqua) Loaded With Premium Easy-Strip Pigtails A4UD24BPAX-01AK
Single Fiber	AFL U-Series Splice Cassette, 24 Fiber, SM, LC (Blue) Loaded With Premium Easy-Strip Pigtails A7UD24BPAX-01AK
Ribbon Fiber	AFL U-Series Splice Cassette, 24 Fiber, SM, LC (Blue) Loaded With Premium Ribbon Pigtails A7UD24BPAX-11AL

Choose Your Cassette

U-Series Patch Plates

Product Overview

U-Series Patch Plates can be used to interconnect MPO trunk assemblies, MPO fanouts, or patch cords, utilizing less rack space in order to improve network economics. Compatible with all U-Series Housings, this solution enables easy front and rear access to adapters for simplified cross connection.



Features

High-Density MPO and LC Patch Plates

- Up to 12 MPO ports per plate
- Up to 12 LC ports (24 fibers) per plate
- Blank plates available to block unused openings

Shuttered LC Adapters

- Greener solution by eliminating adapter dust caps
- Provide automatic laser eye safety
- Easy fault detection
- Facilitate faster patching

Technical Specifications

Unit Height	0RU
	Fits 1 U-Series Cassette
Fiber Counts Available	Maximum Density of: 12 MPO ports, 8 MPO Ports 12 LC ports (24 fiber), 8 LC ports (16 fiber), 6 LC ports (12 fiber) 6 SC ports (12 fiber)
Adapter Types	MPO LC Shuttered SC
Product Dimensions	Height: 87mm (3.4 inches) Width: 30mm (1.2 inches) Depth: 38mm (1.5 inches)
Package Dimensions	Height: 140mm (3.4 inches) Width: 70mm (1.2 inches) Depth: 35mm (1.5 inches)
Material	ABS
Materials Compliant	RoHS, Reach/SVHC, UL 94V-0
Regional Availability	Global

Ordering Information

Description	Part Number
AFL U-Series Patch Plate, 24 Fiber, SM, LC (Blue)	FSUB24BXAX-02AD
AFL U-Series Patch Plate, 24 Fiber, MM, LC (Aqua)	FQUB24BXAX-02AD
AFL U-Series Patch Plate, 8 Port MPO, Key Up/Down	FPUB96BXUX-08AD
AFL U-Series Patch Plate, 12 Port MPO, Key Up/Down	FPUBABBXUX-12AD

Choose Your Cassette

U-Series Pre-Terminated Cassettes

Product Overview

U-Series Pre-Terminated Cassettes bring convenience and flexibility to your data center infrastructure. When fewer links are required, you can easily build a high-performance network with rapid installation time, ultimately improving power budgets and overall cost efficiency. These pre-terminated cassettes are available in a range of configurations to suit your application, factory terminated and pre-tested so you can plug-and-play straight out of the box.



Features

Multiple Configurations

- Cassette to Cassette
- Cassette to MPO
- Cassette to LC or SC fanout
- Cassette to cable stub for splicing

High-Density Pre-Terminated Cassettes

- U-Series 12 ports (24 fiber) with LC
- U-Series 6 ports (12 fiber) with LC

Shuttered Adapters

- Greener solution by eliminating adapter dust caps
- Provide automatic laser eye safety
- Easy fault detection
- Facilitate faster patching

Facilitates moves, Adds, and Changes

- Cassettes can be locked in a parked or maintenance position for simplified patching

Technical Specifications

Fiber Types	SM, OM4
Capacity	12 LC ports (24 fiber), 6 LC ports (12 fiber)
Adapter Types	LC, SC
Materials	ABS, CR4 Steel
Materials Compliant	RoHS, Reach/SVHC, UL 94V-0
Regional Availability	Global

Ordering Information

Description	Part Number
AFL U-Series Pre-Term Cassette to Cassette (A-B), 24 Fiber, SM, LC-LC (Blue), Indoor MicroCable (Yellow), CPR Cca, Xm	A7UD24EPAA-08EG-MX
AFL U-Series Pre-Term Cassette to Cassette (A-B), 24 Fiber, OM4, LC-LC (Aqua), Indoor MicroCable (Aqua), CPR Cca, Xm	A4UD24FPAA-08EG-MX
AFL U-Series Pre-Term Cassette to MPO, 12 Fiber, SM, LC (Blue) to MPO Female Base-12, Indoor MicroCable (Yellow), CPR Cca, Xm	A7UD12EPAU-08LS-MX
AFL U-Series Pre-Term Cassette to MPO, 12 Fiber, OM4, LC (Aqua) to MPO Female Base-12, Indoor MicroCable (Aqua), CPR Cca, Xm	A4UD12FPAAU-08LS-MX
AFL U-Series Cassette to Fanout, 24 Fiber, SM, LC-LC (Blue), Indoor MicroCable (Yellow), CPR Cca, Xm	A7UD24EPAA-08FG-MX
AFL U-Series Cassette to Fanout, 24 Fiber, OM4, LC-LC (Aqua), Indoor MicroCable (Aqua), CPR Cca, Xm	A4UD24FPAA-08FG-MX
AFL U-Series Cassette to Stub, 24 Fiber, SM, LC (Blue), Indoor MicroCable (Yellow), CPR Cca, Xm	A7UD12EPAX-08HB-MX
AFL U-Series Cassette to Stub, 24 Fiber, OM4, LC (Aqua), Indoor MicroCable (Aqua), CPR Cca, Xm	A4UD12FPAX-08HB-MX

Pick Your Assemblies

MPO Trunk Assemblies

Product Overview

MPO Trunks facilitate rapid deployment of high-density backbone cabling in data centers or other high-fiber density environments, reducing network installation or reconfiguration time and cost. Built using compact and rugged MicroCable, these assemblies optimize cable-way use and improve airflow. MPO Premium connectors ensure low insertion loss for demanding high-speed networks where power budgets are critical. Assemblies are available in single mode, OM3, and OM4 fiber types and fiber counts from 12 to 144 fibers.



Features

Fiber and Cable Options

- Available in SM (OS1/2 G.657A1/A2), OM3, OM4
- Compact LSZH, OFNR, OFNP cable jackets available
- Jacket Standard Colours: SM Yellow, OM3 Aqua, OM4 Aqua (OM4 Erika Violet Available)

MPO Interface

- Female and Male MPO connectors available
- Base-8, Base-12 available
- Standards based polarity options available

Optimized Performance

- Low loss Premium MPO connectors and Bend Insensitive fiber assure low insertion losses and reduced power penalties in tight budget high-speed network environments
- 100% factory tested for proven reliability connectivity
- Manufactured in accordance with TIA 568 and IEC 61754 standards

Featured Part Numbers

Description		Part Number
Base-8	24 Fiber, OM4, Premium MPO (Female) to MPO (Female) Base-8 Trunk, Indoor MicroCable (Aqua), Polarity B, CPR Cca, Xm	M4DSFCCPUU-B002-MX
	24 Fiber, SM, Premium MPO (Female) to MPO (Female) Base-8 Trunk, Indoor MicroCable (Yellow), Polarity B, CPR Cca, Xm	M7DSFC9PUU-B002-MX
	48 Fiber, OM4, Premium MPO (Female) to MPO (Female) Base-8 Trunk, Indoor MicroCable (Aqua), Polarity B, CPR B2ca, Xm	M4EAJBCPUU-B002-MX
	48 Fiber, SM, Premium MPO (Female) to MPO (Female) Base-8 Trunk, Indoor MicroCable (Yellow), Polarity B, CPR B2ca, Xm	M7EAJB9PUU-B002-MX
	72 Fiber, OM4, Premium MPO (Female) to MPO (Female) Base-8 Trunk, Indoor MicroCable (Aqua), Polarity B, CPR B2ca, Xm	M4EBMBCPUU-B002-MX
	72 Fiber, SM, Premium MPO (Female) to MPO (Female) Base-8 Trunk, Indoor MicroCable (Yellow), Polarity B, CPR B2ca, Xm	M7EBMB9PUU-B002-MX
	96 Fiber, OM4, Premium MPO (Female) to MPO (Female) Base-8 Trunk, Indoor MicroCable (Aqua), Polarity B, CPR B2ca, Xm	M4ECPBCPUU-B002-MX
	96 Fiber, SM, Premium MPO (Female) to MPO (Female) Base-8 Trunk, Indoor MicroCable (Yellow), Polarity B, CPR B2ca, Xm	M7ECPB9PUU-B002-MX
	144 Fiber, OM4, Premium MPO (Female) to MPO (Female) Base-8 Trunk, Indoor MicroCable (Aqua), Polarity B, CPR B2ca, Xm	M4EDTBCPUU-B002-MX
	144 Fiber, SM, Premium MPO (Female) to MPO (Female) Base-8 Trunk, Indoor MicroCable (Yellow), Polarity B, CPR B2ca, Xm	M7EDTB9PUU-B002-MX
Base-12	12 Fiber, OM4, Premium MPO (Female) to MPO (Female) Base-12 Trunk, Indoor MicroCable (Aqua), Polarity B, CPR Cca, Xm	M4DSBCCPUU-B028-MX
	12 Fiber, SM, Premium MPO (Female) to MPO (Female) Base-12 Trunk, Indoor MicroCable (Yellow), Polarity B, CPR Cca, Xm	M7DSBC9PUU-B028-MX
	24 Fiber, OM4, Premium MPO (Female) to MPO (Female) Base-12 Trunk, Indoor MicroCable (Aqua), Polarity B, CPR Cca, Xm	M4DSFCCPUU-B028-MX
	24 Fiber, SM, Premium MPO (Female) to MPO (Female) Base-12 Trunk, Indoor MicroCable (Yellow), Polarity B, CPR Cca, Xm	M7DSFC9PUU-B028-MX
	48 Fiber, OM4, Premium MPO (Female) to MPO (Female) Base-12 Trunk, Indoor MicroCable (Aqua), Polarity B, CPR B2ca, Xm	M4EAJBCPUU-B028-MX
	48 Fiber, SM, Premium MPO (Female) to MPO (Female) Base-12 Trunk, Indoor MicroCable (Yellow), Polarity B, CPR B2ca, Xm	M7EAJB9PUU-B028-MX
	72 Fiber, OM4, Premium MPO (Female) to MPO (Female) Base-12 Trunk, Indoor MicroCable (Aqua), Polarity B, CPR B2ca, Xm	M4EBMBCPUU-B028-MX
	72 Fiber, SM, Premium MPO (Female) to MPO (Female) Base-12 Trunk, Indoor MicroCable (Yellow), Polarity B, CPR B2ca, Xm	M7EBMB9PUU-B028-MX
	96 Fiber, OM4, Premium MPO (Female) to MPO (Female) Base-12 Trunk, Indoor MicroCable (Aqua), Polarity B, CPR B2ca, Xm	M4ECPBCPUU-B028-MX
	96 Fiber, SM, Premium MPO (Female) to MPO (Female) Base-12 Trunk, Indoor MicroCable (Yellow), Polarity B, CPR B2ca, Xm	M7ECPB9PUU-B028-MX
144 Fiber, OM4, Premium MPO (Female) to MPO (Female) Base-12 Trunk, Indoor MicroCable (Aqua), Polarity B, CPR B2ca, Xm	M4EDTBCPUU-B028-MX	
144 Fiber, SM, Premium MPO (Female) to MPO (Female) Base-12 Trunk, Indoor MicroCable (Yellow), Polarity B, CPR B2ca, Xm	M7EDTB9PUU-B028-MX	

Ordering Information

Code	Fiber Type	Fiber Count	Jacket Material	Color	Code	End A	End B	Polarity	Tails	Unit	Length
M	3 OM3	DSB 12f	L LSZH	9 Yellow	P	U MPO F	U MPO F	-A Polarity A	002 Base-8 Fanout	M Meters	1 1
	4 OM4	DSF 24f	E CPR Eca	C Aqua		V MPO M	V MPO M	-B Polarity B	003 Base-8 Staggered	F Feet	2 2
	7 G.657A1	EAJ 48f	C CPR Cca	D Erika Violet			X Open	-C Polarity C	027 Base-12 Staggered		3 3
	8 G.657A2	EMB 72	B CPR B2ca						028 Base-12 Fanout		4 4
		ECP 96	R OFNR								5 5
		EDT 144f	Q OFNR UL Listed								10 10
			P OFNP								XX Specify
			A OFNP UL Listed								

Pick Your Assemblies

LC Reversible Polarity Uniboot Patch Cord

Product Overview

Achieve quick and easy polarity reversal in the field without the use of tools or risk of damaging optical fibers. This patch cord is supplied on 2mm round duplex cable that reduces cable congestion, allows for greater finger access in patching areas, and improves airflow around active equipment. LC connector ferrules assure high transmission quality paired with low optical power loss, for a reliable and a high-performance network.



Features

Reversible Polarity

- Enables simplified polarity correction in the field
- Easy to use push-pull mechanism without exposing bare fibers

Small Diameter Patch Cords

- Contribute to improved airflow and reduced cable congestion in the patching area

Standard and Reduced Bend Sensitivity

- Applicable to OM3, OM4, and SM fiber types

Cable Specifications

Characteristics	2.4mm Round Duplex
Cable material	LSZH, OFNR
Fiber types	SM, OM3, OM4
Cable Jacket Availability	Yellow (SM), Aqua (OM3 and OM4), Erika Violet (OM4)
Materials Compliant	RoHS materials, REACH, SVHC
Strength Member	Aramid
Operating Temperature	-20 to 70°C
Secondary Buffer Diameter	600 ± 50µm
Minimum Bending Radius	10D (installed) 20D (loaded)mm
Regional Availability	Global

Featured Part Numbers

Description	Part Number
AFL Premium Patchcord, LC Uniboot - LC Uniboot, Reversible Polarity, OM4 (Aqua), 2mm Round Duplex, 1m	P4AW2LCPCC-0006-M1
AFL Premium Patchcord, LC Uniboot - LC Uniboot, Reversible Polarity, OM4 (Aqua), 2mm Round Duplex, 2m	P4AW2LCPCC-0006-M2
OM4 AFL Premium Patchcord, LC Uniboot - LC Uniboot, Reversible Polarity, OM4 (Aqua), 2mm Round Duplex, 3m	P4AW2LCPCC-0006-M3
AFL Premium Patchcord, LC Uniboot - LC Uniboot, Reversible Polarity, OM4 (Aqua), 2mm Round Duplex, 5m	P4AW2LCPCC-0006-M5
AFL Premium Patchcord, LC Uniboot - LC Uniboot, Reversible Polarity, OM4 (Aqua), 2mm Round Duplex, 10m	P4AW2LCPCC-0006-M10
AFL Premium Patchcord, LC Uniboot - LC Uniboot, Reversible Polarity, SM (Yellow), 2mm Round Duplex, 1m	P7AW2L9PCC-0006-M1
AFL Premium Patchcord, LC Uniboot - LC Uniboot, Reversible Polarity, SM (Yellow), 2mm Round Duplex, 2m	P7AW2L9PCC-0006-M2
SM AFL Premium Patchcord, LC Uniboot - LC Uniboot, Reversible Polarity, SM (Yellow), 2mm Round Duplex, 3m	P7AW2L9PCC-0006-M3
AFL Premium Patchcord, LC Uniboot - LC Uniboot, Reversible Polarity, SM (Yellow), 2mm Round Duplex, 5m	P7AW2L9PCC-0006-M5
AFL Premium Patchcord, LC Uniboot - LC Uniboot, Reversible Polarity, SM (Yellow), 2mm Round Duplex, 10m	P7AW2L9PCC-0006-M10

Amend X in part number and description to denote custom length in meters



AFL Hyperscale 25 Year Network Warranty

The AFL Hyperscale 25 Year Network Warranty provides a 25-year assurance that the network will operate, support, and remain compliant with the cabling standards it was designed for.

A 25-year Network Warranty is only available when the network is designed, supplied, installed, and tested by an approved AFL Hyperscale Installation Partner.

To qualify, the installation must be made up solely of AFL Hyperscale manufactured products, new at the time of installation, and tested in line with industry standards.

www.aflhyperscale.com/partner/

How to Order

We have dedicated multilingual sales teams around the world who will be able to assist you in quotes and ordering. Scan the QR code to fill out a contact form.



You can also find the contact details for our teams below:

West Coast (USA)

+1 866 814 8615
usasales@aflhyperscale.com

India

+91 80 46874687
indiasales@aflhyperscale.com

China

+86 755 2561 3694
apacsales@aflhyperscale.com

East Coast (USA)

+1 800 790 9932
usasales@aflhyperscale.com

Singapore

+65 6491 1147
apacsales@aflhyperscale.com

Australia

+61 3 9316 8302
ANZsales@aflhyperscale.com

United Kingdom

+44 1908 441 144
emeasales@aflhyperscale.com

Hong Kong

+852 3689 6396
apacsales@aflhyperscale.com





AFL HYPERSCALE®

Data Center Cabling and Connectivity Experts

AFL Hyperscale is the first cabling and connectivity solution provider focused on the ever-evolving needs of data centers.

Hyperscale, colocation, and enterprise data centers are united in their pursuit to connect the unconnected, yet their infrastructure, performance, and operational challenges are totally unique.

We work collaboratively with our customers to create connectivity solutions tailored to their current needs and to the requirements of future networks. We then use our responsive, global operational capabilities and distribution network for fast delivery.

This approach has transformed how many data centers grow worldwide and is built on 70 years' combined experience in the design and manufacture of high-performance optical fiber networks, a global presence, and the backing and innovation sharing of our parent and grandparent companies, AFL and Fujikura, the pioneer in optical technology. AFL Hyperscale is your dependable partner to build a more connected world.

AFL Hyperscale - The World, Connected.

www.aflhyperscale.com