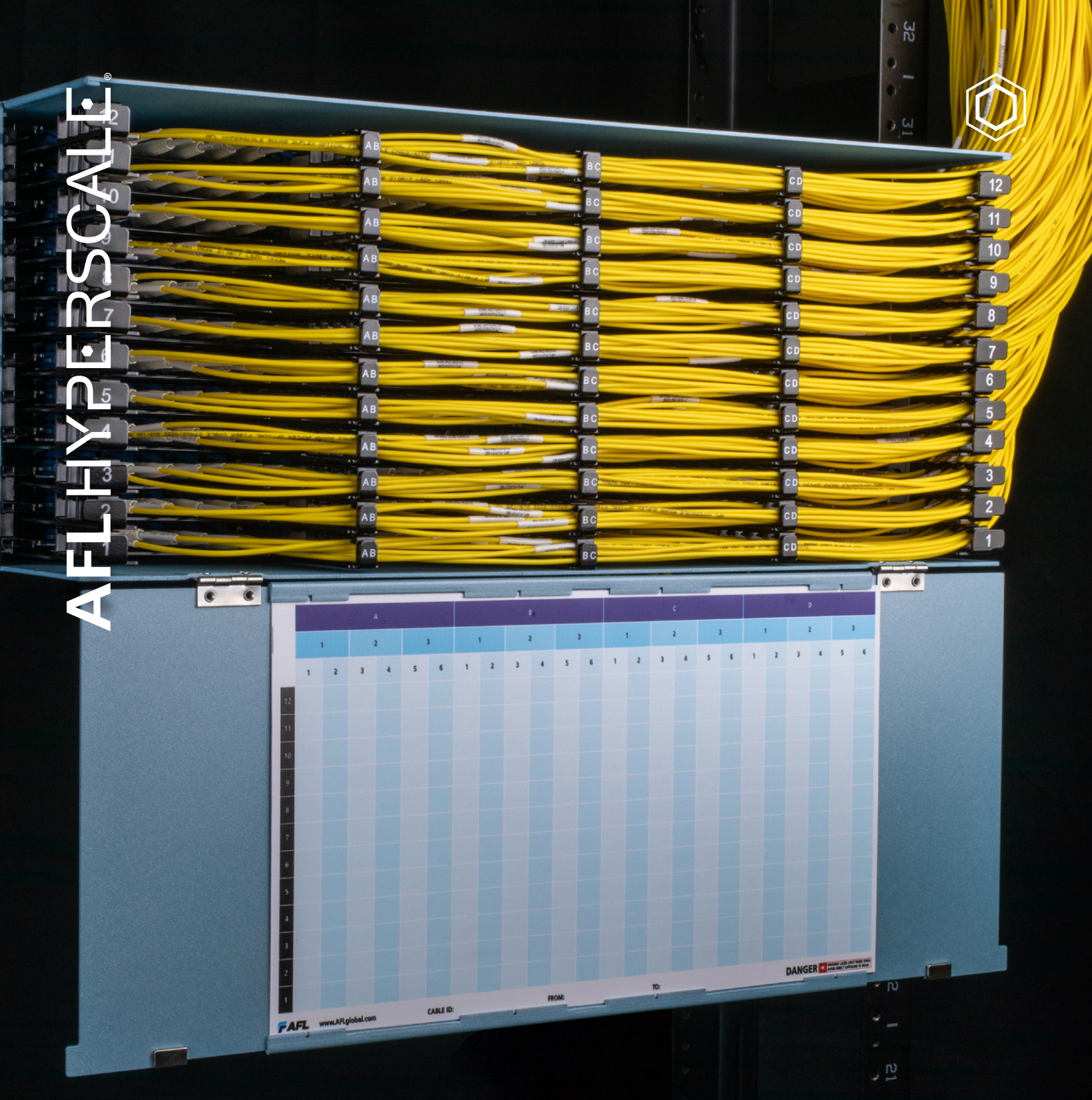


AFLHYPERSCALE®



**ASCEND**

**A High-Speed, High-Density, High-Performance  
Fiber Connectivity Platform for Data Centers**

Ordering Guide

# Contents

## **03** Introduction to the ASCEND® Platform Ordering Process

---

## **05** ASCEND Housings ASCEND 1RU Housing ASCEND 2RU Housing ASCEND 4RU Housing

---

## **06** ASCEND Cassettes ASCEND MPO Fanout Cassettes ASCEND Patch Cassettes ASCEND Splice Cassettes ASCEND Conversion Cassettes ASCEND Tap Cassettes

---

## **11** Assemblies ASCEND MPO Trunk Assemblies LC Reversible Polarity Uniboot Patch Cord

---

## **13** 25-Year Warranty

---

## **14** How to order

# Taking Your Data Center Network To New Heights

The ASCEND® platform is a modular, high-density, assembly and rack-mount solution designed for data centers, central offices, head-ends, and structured cabling networks. Whether supporting incremental growth or a full-scale deployment, our ASCEND solution delivers optimal fiber performance, in an easy-to-use, scalable platform.

This solution enables you to utilize high-capacity housings, easy-to-install cassettes, and high-performance assemblies to grow at the pace your business requires. Factory terminated and pre-tested components facilitate immediate plug-and-play deployment, reducing installation times by up to 75% while seamlessly paving the way for clear migration paths from 40GB/s to 400Gb/s and beyond.

We offer some of the best lead times globally for high-performance, custom pre-terminated assemblies with a 25-year network warranty (subject to terms and conditions) on installed networks.

## AFL Hyperscale, your data center cabling and connectivity Partner



### Fast Growing Networks

Scalable modular connectivity solutions that enable you to grow your fiber network quickly when your business needs it.



### Simplified Design

New Polarity F Cassettes simplify every step of the process from design, to installation, to testing.



### Projects Delivered On Time

Stock available across the globe, short lead times on customizable assemblies, and a full range of products that support rapid installations.



### Experts In Quality

Our innovative technologies and high-quality products are developed with customer success at the heart.

[www.aflhyperscale.com/solutions/network/modularconnectivity/ascend/](http://www.aflhyperscale.com/solutions/network/modularconnectivity/ascend/)

# Ordering Process

## 3 Simple Steps to Plan Your High-Performance Network

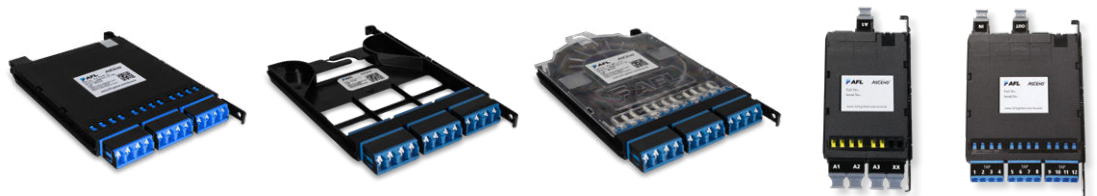
### Select Your **Housing**

Choose from 1RU, 2RU, or 4RU ASCEND housings.



### Choose Your **Cassettes**

Select the cassettes you require from our range of ASCEND MPO Fanout Cassettes, Patch Cassettes, Splice Cassettes, Conversion Cassettes, and Tap Cassettes.



### Pick Your **Assemblies**

Select the assemblies you need from our range of pre-terminated trunk cables, and fiber patch cords.



## Select Your Housing

# ASCEND® Housings

## Product Overview

Designed to support incremental growth or a full-scale deployment, ASCEND® housings provide the ultimate experience in ease-of-use and fiber management within data center and enterprise applications. Compatible with a wide range of ASCEND cassettes, this modular tray-based connectivity solution gives you the most flexible approach to building a high-density network with up to 288 LC ports (576 fibers) utilizing LC duplex in 4RU of space.



## Features

### Front and Rear Cable Management

- Front loading trays, cassettes can be installed from front or rear of housing
- Rear management area accommodates ASCEND trunk cable assemblies, equipped with an integrated mounting clip
- Easy access for efficient cable loading and patching
- Run assemblies to the left or right of the housing depending on where you need to connect
- Front and rear doors are both hinged at the bottom

### Easy Moves, Adds, and Changes (MACs)

- Trays can slide and lock in position for simplified patching
- Integrated routing rings on front of trays for each cassette
- Interchangeable cassette options for multiple applications

### Customizable Labeling

- Effective identification for network maintenance, upgrades, and troubleshooting

## Technical Specifications

Unit Height	1RU	2RU	4RU
	<b>Up to 3 Trays</b>	<b>Up to 6 Trays</b>	<b>Up to 12 Trays</b>
Capacity	Maximum density of up to: Cassettes: 18 x Base-8 Cassettes (6 per tray) 12 x Base-12 Cassettes (4 per tray) 6 x Base-24 Cassettes (2 per tray)  LC: 72 ports (144 fibers) MPO: 72 ports (864 fibers)	Maximum density of up to: Cassettes: 36 x Base-8 Cassettes (6 per tray) 24 x Base-12 Cassettes (4 per tray) 12 x Base-24 Cassettes (2 per tray)  LC: 144 ports (288 fibers) MPO: 144 ports (1728 fibers)	Maximum density of up to: Cassettes: 72 x Base-8 Cassettes (6 per tray) 48 x Base-12 Cassettes (4 per tray) 24 x Base-24 Cassettes (2 per tray)  LC: 288 ports (576 fibers) MPO: 288 ports (3456 fibers)
Product Dimensions	Height: 44.5mm (1.75 inches) Width: 502mm (19 inches) Depth: 438mm (17.2 inches)	Height: 89mm (3.5 inches) Width: 502mm (19 inches) Depth: 438mm (17.2 inches)	Height: 178mm (7 inches) Width: 502mm (19 inches) Depth: 438mm (17.2 inches)
Weight	Product weight: 7.5kg Packaged weight: 10.8kg	Product weight: 12kg Packaged weight: 13.6kg	Product weight: 15.7kg Packaged weight: 20.66kg
Materials	ABS, GA Galvannealed Sheet Steel per ASTM A653	ABS, GA Galvannealed Sheet Steel per ASTM A653	ABS, GA Galvannealed Sheet Steel per ASTM A653
Materials compliant to	RoHS, Reach / SVHC, UL 94V-0	RoHS, Reach / SVHC, UL 94V-0	RoHS, Reach / SVHC, UL 94V-0
Regional Availability	Global	Global	Global

## Ordering Information

Description	Part Number
AFL ASCEND® 1RU Housing, Base-8 Trays	ASCEND-1RU-8-RT
AFL ASCEND® 2RU Housing, Base-8 Trays	ASCEND-2RU-8-RT
AFL ASCEND® 4RU Housing, Base-8 Trays	ASCEND-4RU-8-RT
AFL ASCEND® 1RU Housing, Base-12 Trays	ASCEND-1RU-12-RT
AFL ASCEND® 2RU Housing, Base-12 Trays	ASCEND-2RU-12-RT
AFL ASCEND® 4RU Housing, Base-12 Trays	ASCEND-4RU-12-RT

## Choose Your Cassette

# ASCEND® MPO Fanout Cassettes

## Product Overview

ASCEND® MPO Fanout Cassettes are a pre-terminated plug-and-play solution designed to support incremental growth or a full-scale deployment in data center and enterprise applications. These cassettes are offered in a range of configurations and are compatible with all standard ASCEND housings. They can be independently installed from the front or rear onto a sliding tray system which allows access to individual connections while minimizing disruption to other fiber connections.



## Features

### High-Density MPO to LC Cassettes

- Base-8, Base-12, and Base-24 options available
- Up to 6 LC ports (12 fibers) per cassette
- Multi-mode and Single mode cassette options available

### Shuttered LC Adapters

- Greener solution by eliminating adapter dust caps
- Provide automatic laser eye safety
- Easy fault detection when using a Visual Fault Locator (VFL)
- Facilitate faster patching

### Low Loss Enabled by Fujikura MT Ferrule

- Ensures maximum reliability and mechanical performance

### Polarity F

- Polarity managed in the cassette-Same cassette orientation can be used at both ends of a link

### Easy Moves, Adds, and Changes (MACs)

- Trays can slide and lock in a position for simplified patching
- Cassettes can be installed independently from front or rear of housing

## Technical Specifications

Fiber Types	SM, OM3, OM4
Fiber Counts Available	12 LC ports (24 fiber), 6 LC ports (12 fiber), 4 LC ports (8 fiber)
Polarity Mapping Available	Polarity F (Polarity A is available on request)
Adapter Types	MPO (Male) to LC Shuttered Adapters
Cassette Material	ABS, 304 Steel
Cassette Color	Black
Cassette Dimensions (Base-12)	Height: 11mm (0.4 inches) Width: 94mm (3.7 inches) Depth: 156mm (6.1 inches)
Package Dimensions	Height: 12mm (0.5 inches) Width: 127mm (5 inches) Depth: 183mm (7.2 inches)
Weight	Product weight: 0.2kg Packaged weight: 0.3kg
Materials Compliant	RoHS, Reach/SVHC, UL 94V-0
Regional Availability	Global

## Ordering Information

Description	Part Number
Base-8	AFL ASCEND® Fanout Cassette, 8 Fiber, SM, MPO (Male) Base-8 to LC (Blue), Polarity F
	AFL ASCEND® Fanout Cassette, 8 Fiber, OM4 MPO (Male) Base-8 to LC (Aqua), Polarity F
Base-12	AFL ASCEND® Fanout Cassette, 12 Fiber, SM, MPO (Male) Base-12 to LC (Blue), Polarity F
	AFL ASCEND® Fanout Cassette, 12 Fiber, OM4, MPO (Male) Base-12 to LC (Aqua), Polarity F

## Choose Your Cassette

# ASCEND® Patch Cassettes

## Product Overview

ASCEND® Patch Cassettes can be used to interconnect MPO trunk assemblies, patch cords, or MPO fanouts, utilizing less rack space in order to improve network economics. These cassettes are offered in a range of configurations and are compatible with all standard ASCEND housings. This solution enables easy front and rear access to adapters for simplified cross connection in data center and enterprise applications.



## Features

### High-Density MPO and LC Patch Cassettes

- Up to 6 MPO ports per cassette
- Up to 6 LC ports (12 fibers) per cassette

### Shuttered LC Adapters

- Greener solution by eliminating adapter dust caps
- Provide automatic laser eye safety
- Easy fault detection when using a Visual Fault Locator (VFL)
- Facilitate faster patching

## Technical Specifications

Fiber Types	SM, MM
Fiber Counts Available	6 LC ports (12 fiber), 4 LC ports (8 fiber) 6 or 4 MPO ports
Adapter Types	LC Shuttered MPO
Cassette Material	ABS, 304 Steel
Cassette Color	Black
Cassette Dimensions (Base-12)	Height: 11mm (0.4 inches) Width: 94mm (3.7 inches) Depth: 156mm (6.1 inches)
Package Dimensions	Height: 12mm (0.5 inches) Width: 127mm (5 inches) Depth: 183mm (7.2 inches)
Materials Compliant	RoHS, Reach/SVHC, UL 94V-0
Regional Availability	Global

## Ordering Information

Description	Part Number	
Base-8	AFL ASCEND® Patch Cassette, 4 Port, MPO Base-8, Key Up/Down	A8-PC-M1
	AFL ASCEND® Patch Cassette, 8 Fiber, OM4, LC (Aqua)	A8-PC-L4
	AFL ASCEND® Patch Cassette, 8 Fiber, SM, LC (Blue)	A8-PC-LU
Base-12	AFL ASCEND® Patch Cassette, 6 Port, MPO Base-12, Key Up/Down	A12-PC-M1
	AFL ASCEND® Patch Cassette, 12 Fiber, OM4, LC (Aqua)	A12-PC-L4
	AFL ASCEND® Patch Cassette, 12 Fiber, SM, LC (Blue)	A12-PC-LU

## Choose Your Cassette

# ASCEND® Splice Cassettes

## Product Overview

ASCEND® Splice Cassettes are ideal for dynamic, ever-changing data center and enterprise networks. This solution facilitates faster field splicing with 250-micron pre-terminated single fiber pigtailed or one SpiderWeb Ribbon® (SWR®) pigtail. These Splice Cassettes leverage a snap-in splice sleeve cradle to securely manage both single and ribbon fiber arrangements. They can be independently installed from the front or rear onto a sliding tray system, enabling easy Moves, Adds, and Changes (MACs) while allowing you to work away from the rack.



## Features

- **Pre-Loaded with Pigtailed and Pre-Routed**
- 250-micron single fiber pigtailed can be spliced to loose tube or MicroCables
- SpiderWeb®Ribbon pigtail can be spliced to ISP, ISP/OSP cables, and other ribbon fiber cables

### High-Density

- Up to 6 LC ports (12 fibers) with LC
- Single fiber or ribbon fiber mass fusion splicing

### Shuttered LC Adapters

- Greener solution by eliminating adapter dust caps
- Provide automatic laser eye safety
- Easy fault detection when using a Visual Fault Locator (VFL)
- Facilitate faster patching

## Technical Specifications

	Single Fiber Splice Cassette	Ribbon Fiber Mass Fusion Splice Cassette
Fiber Types	SM, OM4	SM
Fiber Counts Available	<b>6 LC ports (12 fiber)</b>	6 LC ports (12 fiber)
Adapter Types	LC	LC
Cassette Material	ABS, CR4 Steel	ABS, CR4 Steel
Cassette Colour	Black	Black
Product Dimensions	Height: 11mm (0.4 inches) Width: 93mm (3.7 inches) Depth: 165mm (6.5 inches)	Height: 11mm (0.4 inches) Width: 93mm (3.7 inches) Depth: 165mm (6.5 inches)
Package Dimensions	Height: 12mm (0.5 inches) Width: 114mm (4.5 inches) Depth: 254mm (10 inches)	Height: 12mm (0.5 inches) Width: 114mm (4.5 inches) Depth: 254mm (10 inches)
Materials Compliant	RoHS, Reach/SVHC, UL 94V-0	RoHS, Reach/SVHC, UL 94V-0
Regional Availability	Global	Global

## Ordering Information

Description	Part Number
AFL ASCEND® Splice Cassette, 12 Fiber, SM, LC (Blue) Pre-Loaded With Premium Easy-Strip Pigtailed	<b>A12-SPC-LU-S</b>
AFL ASCEND® Splice Cassette, 12 Fiber, OM4, LC (Aqua) Loaded With Premium Easy-Strip Pigtailed	<b>A12-SPC-L4-S</b>
AFL ASCEND® Splice Cassette, 12 Fiber, SM, LC (Blue) Pre-Loaded With Premium Ribbon Pigtailed	<b>A12-SPC-LU-R</b>



## Choose Your Cassette

# ASCEND® Conversion Cassettes

## Product Overview

AFL's Conversion Cassettes provide an effective solution to transition from one Base platform to another in data center and enterprise applications. The cassettes fully utilize each fiber in a Base-12 or Base-24 array by breaking out the MPO adapters at the rear of the cassette into a corresponding number of Base-8 adapters at the front.



## Features

### Multiple Transition Options

- Accommodates 12 or 24 fiber MPO connections at the rear of the cassette and effectively transitions to 8 fiber MTP/MPO connections at the front of the cassette

### Easy Moves, Adds, and Changes (MACs)

- Trays can slide and lock in a position for simplified patching
- Cassettes can be installed independently from the front or rear of housing

## Technical Specifications

Fiber Types	SM, OM3, OM4
Conversion Types	1 x Base-24 to 3 x Base-8, 2 x Base-12 to 3 x Base-8, 4 x Base-12 to 6 x Base-8
Adapter Types	MPO (Male)
Cassette Material	ABS, 304 Steel
Cassette Color	Black
Cassette Dimensions	Height: 11mm (0.4 inches) Width: 94mm (3.7 inches) Depth: 156mm (6.1 inches)
Package Dimensions	Height: 12mm (0.5 inches) Width: 127mm (5.0 inches) Depth: 183mm (7.2 inches)
Materials Compliant	RoHS, Reach/SVHC, UL 94V-0

## Ordering Information

Description	Part Number	
Base-24 to Base-8 Conversion Cassettes	AFL ASCEND® Conversion Cassette, Base-8, 24x1 MPO Rear, 8x3 MPO Front, 1 Circuit, SM	A8-CC-24X1-8X3-1-1
	AFL ASCEND® Conversion Cassette, Base-8, 24x1 MPO Rear, 8x3 MPO Front, 1 Circuit, OM3	A8-CC-24X1-8X3-1-3
Base-8	AFL ASCEND® Conversion Cassette, Base-8, 24x1 MPO Rear, 8x3 MPO Front, 1 Circuit, OM4	A8-CC-24X1-8X3-1-4
	AFL ASCEND® Conversion Cassette, Base-12, 12x2 MPO Rear, 8x3 MPO Front, 1 Circuit, SM	A12-CC-12X2-8X3-1-1
Base-12 to Base-8 Conversion Cassettes	AFL ASCEND® Conversion Cassette, Base-12, 12X2 MPO Rear, 8x3 MPO Front, 1 Circuit, OM3	A12-CC-12X2-8X3-1-3
	AFL ASCEND® Conversion Cassette, Base-12, 12X2 MPO Rear, 8x3 MPO Front, 1 Circuit, OM4	A12-CC-12X2-8X3-1-4
	AFL ASCEND® Conversion Cassette, Base-12, 12X2 MPO Rear, 8x3 MPO Front, 2 Circuit, SM	A12-CC-12X2-8X3-2-1
Base-12	AFL ASCEND® Conversion Cassette, Base-12, 12x2 MPO Rear, 8x3 MPO Front, 2 Circuit, OM3	A12-CC-12X2-8X3-2-3
	AFL ASCEND® Conversion Cassette, Base-12, 12x2 MPO Rear, 8x3 MPO Front, 2 Circuit, OM4	A12-CC-12X2-8X3-2-4

Choose Your Cassette

# ASCEND® Tap Cassettes

## Product Overview

High demands placed on modern fiber optic networks require effective monitoring to maintain optimal performance and troubleshoot system security or other signal issues. AFL's ASCEND® Tap Cassettes enable access points for monitoring live traffic signals in any fiber optic network. Available with a variety of options to accommodate different split ratios for tap/pass thru and input/output configurations, it is quick and easy to tap and route network signals for many data center and enterprise applications.



## Features

- **Multiple Split Ratios**
- Available with 50/50 and 30/70 Split Ratios to accommodate various Tap/ Pass Thru requirements

### Shuttered Adapters

- Greener solution by eliminating adapter dust caps
- Provide automatic laser eye safety
- Easy fault detection when using a Visual Fault Locator (VFL)
- Facilitate faster patching

### Easy Moves, Adds, and Changes (MACs)

- Trays can slide and lock in a position for simplified patching
- Cassettes can be installed independently from the front or rear of housing

## Technical Specifications

Fiber Types	SM, OM3, OM4
Fiber Counts Available	12 LC ports (24 fiber), 6 LC ports (12 fiber), 4 LC ports (8 fiber)
Adapter Types	MPO (Male), LC Shuttered
Cassette Material	ABS, 304 Steel
Cassette Color	Black
Cassette Dimensions	Height: 11mm (0.4 inches)
	Width: 94mm (3.7 inches)
	Depth: 156mm (6.1 inches)
Package Dimensions	Height: 12mm (0.5 inches)
	Width: 127mm (5.0 inches)
	Depth: 183mm (7.2 inches)
Materials Compliant	RoHS, Reach/SVHC, UL 94V-0
Regional Availability	Global

## Ordering Information

Description	Part Number	
50/50 (Tap/Pass Thru) Split Ratio Configurations	AFL ASCEND® Tap Cassette, Base-8, SM, MTP Front, MTP Rear, 50% Tap Split, Single	A8-TC-1-1-XXX-50-1
	AFL ASCEND® Tap Cassette, Base-8, SM, LC/UPC Front, MTP Rear, 50% Tap Split, Single	A8-TC-1-2-UCL-50-1
	AFL ASCEND® Tap Cassette, Base-8, SM, LC/APC Front, MTP Rear, 50% Tap Split, Single	A8-TC-1-2-ALC-50-1
	AFL ASCEND® Tap Cassette, Base-8, SM, LC/UPC Front, 50% Tap Split, Single	A8-TC-1-3-UCL-50-1
	AFL ASCEND® Tap Cassette, Base-8, SM, LC/APC Front, 50% Tap Split, Single	A8-TC-1-3-ALC-50-1
	Base-8	AFL ASCEND® Tap Cassette, Base-8, MM, MTP Front, MTP Rear, 50% Tap Split, Single
AFL ASCEND® Tap Cassette, Base-8, MM, LC/PC Front, MTP Rear, 50% Tap Split, Single		A8-TC-4-2-PLC-50-1
AFL ASCEND® Tap Cassette, Base-8, MM, LC/APC Front, 50% Tap Split, Single		A8-TC-4-3-PLC-50-1
50/50 (Tap/Pass Thru) Split Ratio Configurations	AFL ASCEND® Tap Cassette, Base-12, SM, MTP Front, MTP Rear, 50% Tap Split, Single	A12-TC-1-1-XXX-50-1
	AFL ASCEND® Tap Cassette, Base-12, SM, LC/UPC Front, MTP Rear, 50% Tap Split, Single	A12-TC-1-2-UCL-50-1
	AFL ASCEND® Tap Cassette, Base-12, SM, LC/APC Front, MTP Rear, 50% Tap Split, Single	A12-TC-1-2-ALC-50-1
	AFL ASCEND® Tap Cassette, Base-12, SM, LC/UPC Front, 50% Tap Split, Single	A12-TC-1-3-UCL-50-1
	AFL ASCEND® Tap Cassette, Base-12, SM, LC/APC Front, 50% Tap Split, Single	A12-TC-1-3-ALC-50-1
	Base-12	AFL ASCEND® Tap Cassette, Base-12, MM, MTP Front, MTP Rear, 50% Tap Split, Single
AFL ASCEND® Tap Cassette, Base-12, MM, LC/PC Front, MTP Rear, 50% Tap Split, Single		A12-TC-4-2-PLC-50-1
AFL ASCEND® Tap Cassette, Base-12, MM, LC/APC Front, 50% Tap Split, Single		A12-TC-4-3-PLC-50-1

## Pick Your Assemblies

# ASCEND® MPO Trunk Assemblies

## Product Overview

ASCEND® MPO trunk assemblies provide a high-performance plug-and-play solution for data center and enterprise applications where space is limited. The small-diameter MicroCore® provides higher tolerance to bends during and after installation, which requires less space in cable trays, raceways, ducts and conduits. This also enables more efficient airflow in congested, high density cabling applications.



## Features

### MPO Interface

- MPO components feature superior optical and mechanical properties
- Female and Male MPO connectors available
- Base-8, Base-12, and Base-24 connectors available
- Polarity options available

### Premium Performance Enabled by MTP® PRO and MTP® Elite

- Low loss Premium MPO connectors and fiber assures low insertion losses and power penalties in tight power budget high-speed network environments
- MTP® PRO multimode connectors include field-reversible polarity and gender

### Trunk Cable Designed for Ease of Installation

- Reduced diameter MicroCore® cable with 2.0 mm subunits (up to 144 fibers)
- Integrated Outback Clip mates directly with the trunk cable management area in the rear of all ASCEND housings
- Pulling eye option available
- Pre-defined breakout length eliminates design guesswork

## Featured Part Numbers

Description	Part Number
AFL ASCEND® 24 Fiber OM4 indoor CPR MTP (Female) to MTP (Female) Base-8 Trunk W/ Pulling Grip, XXXXM	MF-MF-GE-024-C-XXXXM-P-F-RS
AFL ASCEND® 24 Fiber SM indoor CPR MTP (Female) to MTP (Female) Base-8 Trunk W/ Pulling Grip, XXXXM	EF-EF-GE-024-Q-XXXXM-P-F-RS
AFL ASCEND® 48 Fiber OM4 indoor CPR MTP (Female) to MTP (Female) Base-8 Trunk W/ Pulling Grip, XXXXM	MF-MF-GE-048-C-XXXXM-P-F-RS
AFL ASCEND® 48 Fiber SM indoor CPR MTP (Female) to MTP (Female) Base-8 Trunk W/ Pulling Grip, XXXXM	EF-EF-GE-048-Q-XXXXM-P-F-RS
AFL ASCEND® 96 Fiber OM4 indoor CPR MTP (Female) to MTP (Female) Base-8 Trunk W/ Pulling Grip, XXXXM	MF-MF-GE-096-C-XXXXM-P-F-RS
AFL ASCEND® 96 Fiber SM indoor CPR MTP (Female) to MTP (Female) Base-8 Trunk W/ Pulling Grip, XXXXM	EF-EF-GE-096-Q-XXXXM-P-F-RS
AFL ASCEND® 144 Fiber OM4 indoor CPR MTP (Female) to MTP (Female) Base-8 Trunk W/ Pulling Grip, XXXXM	MF-MF-GE-144-C-XXXXM-P-F-RS
AFL ASCEND® 144 Fiber SM indoor CPR MTP (Female) to MTP (Female) Base-8 Trunk W/ Pulling Grip, XXXXM	EF-EF-GE-144-Q-XXXXM-P-F-RS
AFL ASCEND® 24 Fiber OM4 indoor CPR MTP (Female) to MTP (Female) Base-12 Trunk W/ Pulling Grip, XXXXM	PF-PF-GE-024-C-XXXXM-P-F-RS
AFL ASCEND® 24 Fiber SM indoor CPR MTP (Female) to MTP (Female) Base-12 Trunk W/ Pulling Grip, XXXXM	TF-TF-GE-024-Q-XXXXM-P-F-RS
AFL ASCEND® 48 Fiber OM4 indoor CPR MTP (Female) to MTP (Female) Base-12 Trunk W/ Pulling Grip, XXXXM	PF-PF-GE-048-C-XXXXM-P-F-RS
AFL ASCEND® 48 Fiber SM indoor CPR MTP (Female) to MTP (Female) Base-12 Trunk W/ Pulling Grip, XXXXM	TF-TF-GE-048-Q-XXXXM-P-F-RS
AFL ASCEND® 96 Fiber OM4 indoor CPR MTP (Female) to MTP (Female) Base-12 Trunk W/ Pulling Grip, XXXXM	PF-PF-GE-096-C-XXXXM-P-F-RS
AFL ASCEND® 96 Fiber SM indoor CPR MTP (Female) to MTP (Female) Base-12 Trunk W/ Pulling Grip, XXXXM	TF-TF-GE-096-Q-XXXXM-P-F-RS
AFL ASCEND® 144 Fiber OM4 indoor CPR MTP (Female) to MTP (Female) Base-12 Trunk W/ Pulling Grip, XXXXM	PF-PF-GE-144-C-XXXXM-P-F-RS
AFL ASCEND® 144 Fiber SM indoor CPR MTP (Female) to MTP (Female) Base-12 Trunk W/ Pulling Grip, XXXXM	TF-TF-GE-144-Q-XXXXM-P-F-RS

## Pick Your Assemblies

# LC Reversible Polarity Uniboot Patch Cord



## Product Overview

Achieve quick and easy polarity reversal in the field without the use of tools or risk of damaging optical fibers. This patch cord is supplied on 2mm round duplex cable that reduces cable congestion, allows for greater finger access in patching areas, and improves airflow around active equipment. LC connector ferrules assure high transmission quality paired with low optical power loss, for a reliable and a high-performance network.

## Features

### Reversible Polarity

- Enables simplified polarity correction in the field
- Easy to use push-pull mechanism without exposing bare fibers

### Small Diameter Patch Cords

- Contribute to improved airflow and reduced cable congestion in the patching area

### Standard and Reduced Bend Sensitivity

- Applicable to OM3, OM4, and SM fiber types

## Cable Specifications

Characteristics	2.4mm Round Duplex
Cable material	LSZH, OFNR
Fiber types	SM, OM3, OM4
Cable Jacket Availability	Yellow (SM), Aqua (OM3 and OM4), Erika Violet (OM4)
Materials Compliant	RoHS materials, REACH, SVHC
Strength Member	Aramid
Operating Temperature	-20 to 70°C
Secondary Buffer Diameter	600 ± 50µm
Minimum Bending Radius	10D (installed) 20D (loaded)mm
Regional Availability	Global

## Featured Part Numbers

Description	Part Number
AFL Premium Patchcord, LC Uniboot - LC Uniboot, Reversible Polarity, OM4 (Aqua), 2mm Round Duplex, 1m	P4AW2LCPCC-0006-M1
AFL Premium Patchcord, LC Uniboot - LC Uniboot, Reversible Polarity, OM4 (Aqua), 2mm Round Duplex, 2m	P4AW2LCPCC-0006-M2
OM4 AFL Premium Patchcord, LC Uniboot - LC Uniboot, Reversible Polarity, OM4 (Aqua), 2mm Round Duplex, 3m	P4AW2LCPCC-0006-M3
AFL Premium Patchcord, LC Uniboot - LC Uniboot, Reversible Polarity, OM4 (Aqua), 2mm Round Duplex, 5m	P4AW2LCPCC-0006-M5
AFL Premium Patchcord, LC Uniboot - LC Uniboot, Reversible Polarity, OM4 (Aqua), 2mm Round Duplex, 10m	P4AW2LCPCC-0006-M10
AFL Premium Patchcord, LC Uniboot - LC Uniboot, Reversible Polarity, SM (Yellow), 2mm Round Duplex, 1m	P7AW2L9PCC-0006-M1
AFL Premium Patchcord, LC Uniboot - LC Uniboot, Reversible Polarity, SM (Yellow), 2mm Round Duplex, 2m	P7AW2L9PCC-0006-M2
SM AFL Premium Patchcord, LC Uniboot - LC Uniboot, Reversible Polarity, SM (Yellow), 2mm Round Duplex, 3m	P7AW2L9PCC-0006-M3
AFL Premium Patchcord, LC Uniboot - LC Uniboot, Reversible Polarity, SM (Yellow), 2mm Round Duplex, 5m	P7AW2L9PCC-0006-M5
AFL Premium Patchcord, LC Uniboot - LC Uniboot, Reversible Polarity, SM (Yellow), 2mm Round Duplex, 10m	P7AW2L9PCC-0006-M10

Amend X in part number and description to denote custom length in meters



## AFL Hyperscale 25 Year Network Warranty

The AFL Hyperscale 25 Year Network Warranty provides a 25-year assurance that the network will operate, support, and remain compliant with the cabling standards it was designed for.

A 25-year Network Warranty is only available when the network is designed, supplied, installed, and tested by an approved AFL Hyperscale Installation Partner.

To qualify, the installation must be made up solely of AFL Hyperscale manufactured products, new at the time of installation, and tested in line with industry standards.

[www.aflhyperscale.com/partner/](http://www.aflhyperscale.com/partner/)

# How to Order

We have dedicated multilingual sales teams around the world who will be able to assist you in quotes and ordering. Scan the QR code to fill out a contact form.



You can also find the contact details for our teams below:

## West Coast (USA)

+1 866 814 8615  
usasales@aflhyperscale.com

## India

+91 80 46874687  
indiasales@aflhyperscale.com

## China

+86 755 2561 3694  
apacsales@aflhyperscale.com

## East Coast (USA)

+1 800 790 9932  
usasales@aflhyperscale.com

## Singapore

+65 6491 1147  
apacsales@aflhyperscale.com

## Australia

+61 3 9316 8302  
ANZsales@aflhyperscale.com

## United Kingdom

+44 1908 441 144  
emeasales@aflhyperscale.com

## Hong Kong

+852 3689 6396  
apacsales@aflhyperscale.com





# AFL HYPERSCALE®

## Data Center Cabling and Connectivity Experts

AFL Hyperscale is the first cabling and connectivity solution provider focused on the ever-evolving needs of data centers.

Hyperscale, colocation, and enterprise data centers are united in their pursuit to connect the unconnected, yet their infrastructure, performance, and operational challenges are totally unique.

We work collaboratively with our customers to create connectivity solutions tailored to their current needs and to the requirements of future networks. We then use our responsive, global operational capabilities and distribution network for fast delivery.

This approach has transformed how many data centers grow worldwide and is built on 70 years' combined experience in the design and manufacture of high-performance optical fiber networks, a global presence, and the backing and innovation sharing of our parent and grandparent companies, AFL and Fujikura, the pioneer in optical technology. AFL Hyperscale is your dependable partner to build a more connected world.

AFL Hyperscale - The World, Connected.

[www.aflhyperscale.com](http://www.aflhyperscale.com)