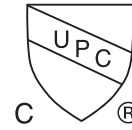




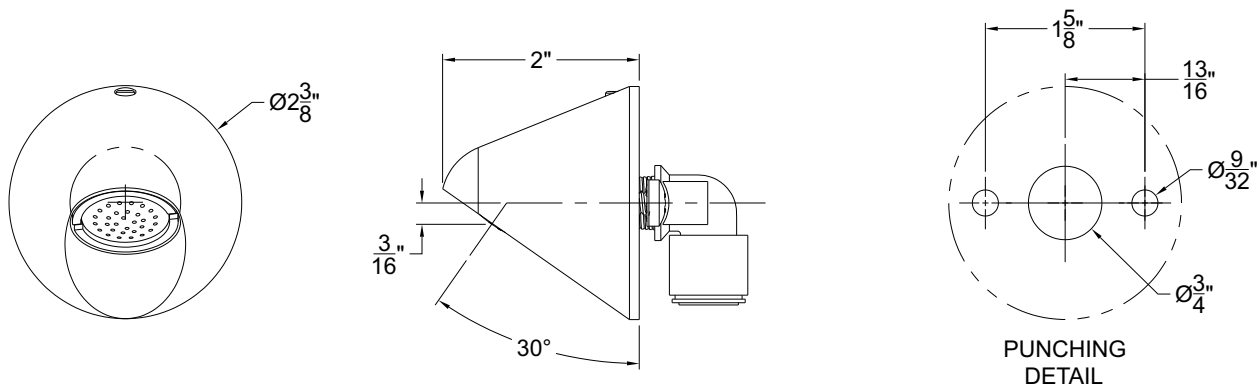
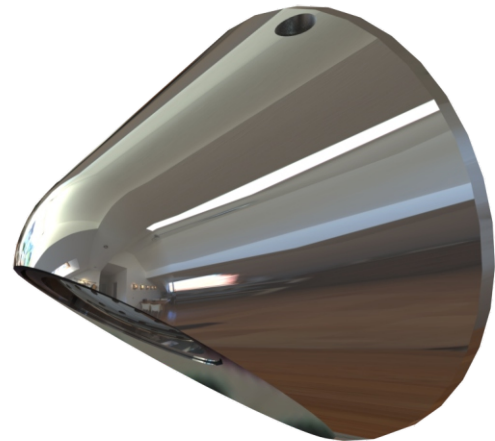
# CSH-WSA



## Ligature Resistant WaterSense Showerhead

Ligature and Vandal Resistant Showerhead with a conical shape. Includes a Removable Vandal Resistant Stainless Steel Non-Aerated Multi-Stream Spray Nozzle fitted with a 1.5 GPM (5.7 LPM) Flow Regulator. Conical Body and Spray Insert are machined from solid type 303 stainless steel and polished to a mirror finish. The conical shape of the Showerhead provides a 30° degree spray angle and prevents it from being used as a ligature point. This Showerhead is IAPMO cUPC certified per ASME A112.18.1 / CSA B125.1 standard for USA & Canada, and is EPA certified under WaterSense requirements.

The CSH-WSA Showerhead is intended for Panel Mounting from the Rear and includes a 1/4" NPT x 3/8" OD Tube Push-in Elbow Fitting and two 1/4-20 UNC x 3/8" long Pan Head Screws for Panel Mounting.



**WARNING:** Cancer and Reproductive Harm - [www.P65Warnings.ca.gov](http://www.P65Warnings.ca.gov)

**Important:** Installation instructions and current rough-in are furnished with each fixture. Do not rough in without certified dimensions. Dimensions are subject to manufacturer's tolerance of plus or minus 1/4" and change without notice. Acorn assumes no responsibility for use of void or superseded data. © Copyright 2009 Acorn Engineering Company

Selection Summary	Approved for Manufacturing
Model No. & Option _____	Company _____ Title _____
Quantity _____	Signature _____ Date _____

**CSH-WSA**

New: 10/02/19