



FENCE COMPANY

California State Contractors
License # 528260

714-630-3390

A-1 Fence Company
2831 E. LA CRESTA AVE.
Anaheim, CA 92806
FAX 630-6013
www.alfence.com
info@alfence.com

Chain Link Fabric

11 1/2 GA. GAW/GBW (2 1/4" Mesh)



Record #	Size	Price/Ea.
00002	36"	Request a Quote
00003	42"	Request a Quote
00004	48"	Request a Quote
00005	60"	Request a Quote
00006	72"	Request a Quote

Chain Link Fabric

11 1/2 GA. GAW/GBW (2 3/8" Mesh)



Record #	Size	Price/Ea.
00007	72"	Request a Quote

Chain Link Fabric

11 GA. GBW (2" Mesh)



Record #	Size	Price/Ea.
00020	36"	Request a Quote



FENCE COMPANY

California State Contractors
License # 528260

714-630-3390

A-1 Fence Company
2831 E. LA CRESTA AVE.
Anaheim, CA 92806
FAX 630-6013
www.alfence.com
info@alfence.com

Chain Link Fabric

11 GA. (2" Mesh)



Record #	Size	Price/Ea.
00021	36"	Request a Quote
00022	42"	Request a Quote
00023	48"	Request a Quote
00024	60"	Request a Quote
00025	72"	Request a Quote
00026	84"	Request a Quote
00027	96"	Request a Quote
00028	120"	Request a Quote
00029	144"	Request a Quote

Chain Link Fabric

9 GA. GAW (2" Mesh)



Record #	Size	Price/Ea.
00031	36"	Request a Quote
00032	42"	Request a Quote
00033	48"	Request a Quote
00034	60"	Request a Quote
00035	72"	Request a Quote
00036	84"	Request a Quote
00037	96"	Request a Quote
00038	120"	Request a Quote
00039	144"	Request a Quote

Chain Link Fabirc

11 GA. Tennis Court (1 3/4" Mesh)



Record #	Size	Price/Ea.
00040	96"	Request a Quote
00041	120"	Request a Quote
00042	144"	Request a Quote



FENCE COMPANY

California State Contractors
License # 528260

714-630-3390

A-1 Fence Company
2831 E. LA CRESTA AVE.
Anaheim, CA 92806
FAX 630-6013
www.alfence.com
info@alfence.com

Chain Link Fabric

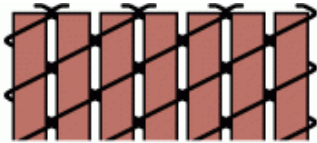
9 GA. Tennis Court (1 3/4" Mesh)



Record #	Size	Price/Ea.
00043	96"	Request a Quote
00044	120"	Request a Quote
00045	144"	Request a Quote

WoodLink

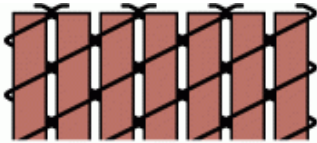
9 Gauge - w/ Slats



Record #	Size	Price/Ea.
00053	48"	Request a Quote
00054	60"	Request a Quote
00055	72"	Request a Quote
00056	84"	Request a Quote
00057	96"	Request a Quote
00058	120"	Request a Quote
00059	144"	Request a Quote

Plastic Link

9 Gauge - w/ Slats



Record #	Size	Price/Ea.
00060	48"	Request a Quote
00061	60"	Request a Quote
00062	72"	Request a Quote
00063	84"	Request a Quote
00064	96"	Request a Quote
00065	120"	Request a Quote
00066	144"	Request a Quote



FENCE COMPANY

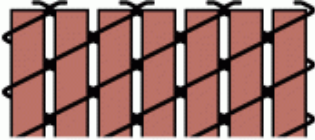
California State Contractors
License # 528260

714-630-3390

A-1 Fence Company
2831 E. LA CRESTA AVE.
Anaheim, CA 92806
FAX 630-6013
www.alfence.com
info@alfence.com

Privacy Link

9 Gauge - w/ Slats



Record #	Size	Price/Ea.
00070	48"	Request a Quote
00071	60"	Request a Quote
00072	72"	Request a Quote
00073	84"	Request a Quote
00074	96"	Request a Quote
00075	120"	Request a Quote
00076	144"	Request a Quote

Color Link

9 GA. Finish Vinyl (2" Mesh) Class 1



Record #	Size	Price/Ea.
00111	36"	Request a Quote
00112	42"	Request a Quote
00113	48"	Request a Quote
00114	60"	Request a Quote
00115	72"	Request a Quote
00116	84"	Request a Quote
00117	96"	Request a Quote
00118	120"	Request a Quote
00119	144"	Request a Quote

Chain Link Fabric

9 GA. Extruded Vinyl Tennis Court (1 3/4" Mesh) Class 1



Record #	Size	Price/Ea.
00120	96"	Request a Quote
00121	120"	Request a Quote
00122	144"	Request a Quote



FENCE COMPANY

California State Contractors
License # 528260

714-630-3390

A-1 Fence Company
2831 E. LA CRESTA AVE.
Anaheim, CA 92806
FAX 630-6013
www.alfence.com
info@alfence.com

Chain Link Fabric

9 GA. GBW



Record #	Size	Price/Ea.
00135	36"	Request a Quote
00136	42"	Request a Quote
00137	48"	Request a Quote
00138	60"	Request a Quote
00139	72"	Request a Quote
00140	84"	Request a Quote
00141	96"	Request a Quote
00142	120"	Request a Quote
00143	144"	Request a Quote

Chain Link Fabric

6 GA. GAW (2" Mesh) 2 oz



Record #	Size	Price/Ea.
00144	36"	Request a Quote
00145	42"	Request a Quote
00146	48"	Request a Quote
00147	60"	Request a Quote
00148	72"	Request a Quote
00149	84"	Request a Quote
00150	96"	Request a Quote
00151	120"	Request a Quote
00152	144"	Request a Quote

Chain Link Fabric

11 GA. GAW (1" Mesh)



Record #	Size	Price/Ea.
00153	36"	Request a Quote
00154	42"	Request a Quote
00155	48"	Request a Quote
00156	60"	Request a Quote
00157	72"	Request a Quote
00158	84"	Request a Quote
00159	96"	Request a Quote
00160	120"	Request a Quote
00161	144"	Request a Quote



FENCE COMPANY

California State Contractors
License # 528260

714-630-3390

A-1 Fence Company
2831 E. LA CRESTA AVE.
Anaheim, CA 92806
FAX 630-6013
www.alfence.com
info@alfence.com

Chain Link Fabric

9 GA. (1" Mesh)



Record #	Size	Price/Ea.
00162	36"	Request a Quote
00163	42"	Request a Quote
00164	48"	Request a Quote
00165	60"	Request a Quote
00166	72"	Request a Quote
00167	84"	Request a Quote
00168	96"	Request a Quote
00169	120"	Request a Quote
00170	144"	Request a Quote

Chain Link Fabric

9 GA. Vinyl (1" Mesh) Class 1



Record #	Size	Price/Ea.
00191	48"	Request a Quote
00192	60"	Request a Quote
00193	72"	Request a Quote
00194	84"	Request a Quote
00195	96"	Request a Quote

Chain Link Fabric

11 GA. GAW (1 1/4" Mesh) Pool Fence



Record #	Size	Price/Ea.
00196	60"	Request a Quote
00197	72"	Request a Quote
00198	96"	Request a Quote



FENCE COMPANY

California State Contractors
License # 528260

714-630-3390

A-1 Fence Company
2831 E. LA CRESTA AVE.
Anaheim, CA 92806
FAX 630-6013
www.alfence.com
info@alfence.com

Chain Link Fabric

9 GA. GAW (1 1/4" Mesh) Pool Fence



Record #	Size	Price/Ea.
00199	60"	Request a Quote
00200	72"	Request a Quote
00201	96"	Request a Quote

Chain Link Fabric

9 GA. GAW (1 1/4" Mesh) Pool Fence Class 1



Record #	Size	Price/Ea.
00202	60"	Request a Quote
00203	72"	Request a Quote
00204	96"	Request a Quote

Chain Link Fabric

9 GA. GAW (2" Mesh) 2.0 oz Galvanized



Record #	Size	Price/Ea.
00207	36"	Request a Quote
00208	42"	Request a Quote
00209	48"	Request a Quote
00210	60"	Request a Quote
00211	72"	Request a Quote
00212	84"	Request a Quote
00213	96"	Request a Quote
00214	120"	Request a Quote
00215	144"	Request a Quote



FENCE COMPANY

California State Contractors
License # 528260

714-630-3390

A-1 Fence Company
2831 E. LA CRESTA AVE.
Anaheim, CA 92806
FAX 630-6013
www.alfence.com
info@alfence.com

Chain Link Fabric

11 GA. Core 8 GA Finish Fused/Adhered Vinyl (2" Mesh) Class 2A



Record #	Size	Price/Ea.
00216	36"	Request a Quote
00217	42"	Request a Quote
00218	48"	Request a Quote
00219	60"	Request a Quote
00220	72"	Request a Quote
00221	84"	Request a Quote
00222	96"	Request a Quote
00223	120"	Request a Quote
00224	144"	Request a Quote

Chain Link Fabric

11 GA. Core 8 GA Finish Fused/Adhered Vinyl (2" Mesh) Class 2B



Record #	Size	Price/Ea.
00225	36"	Request a Quote
00226	42"	Request a Quote
00227	48"	Request a Quote
00228	60"	Request a Quote
00229	72"	Request a Quote
00230	84"	Request a Quote
00231	96"	Request a Quote
00232	120"	Request a Quote
00233	144"	Request a Quote

Chain Link Fabric

9 GA. Core 8 GA Finish Fused/Adhered Vinyl (2" Mesh) Class 2B



Record #	Size	Price/Ea.
00235	96"	Request a Quote
00236	120"	Request a Quote
00237	144"	Request a Quote



FENCE COMPANY

California State Contractors
License # 528260

714-630-3390

A-1 Fence Company
2831 E. LA CRESTA AVE.
Anaheim, CA 92806
FAX 630-6013
www.alfence.com
info@alfence.com

Chain Link Fabric

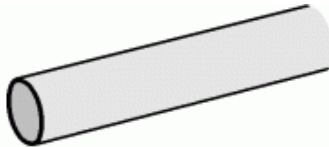
9 GA. Core 8 GA Finish Fused/Adhered Vinyl (2" Mesh) Class 2B



Record #	Size	Price/Ea.
00238	36"	Request a Quote
00239	42"	Request a Quote
00240	48"	Request a Quote
00241	60"	Request a Quote
00242	72"	Request a Quote
00243	84"	Request a Quote
00244	96"	Request a Quote
00245	120"	Request a Quote
00246	144"	Request a Quote

Tubing

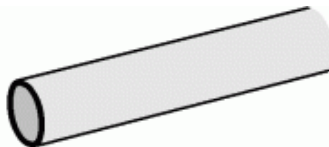
16 Gauge



Record #	Size	Price/Ea.
00277	1 3/8"	Request a Quote
00278	1 5/8"	Request a Quote
00279	1 7/8"	Request a Quote
00280	2 3/8"	Request a Quote

Structural Pipe

Structural Grade or SS-20



Record #	Size	Price/Ea.
00281	1 3/8"	Request a Quote
00282	1 5/8"	Request a Quote
00283	1 7/8"	Request a Quote
00284	2 3/8"	Request a Quote
00285	2 7/8"	Request a Quote



FENCE COMPANY

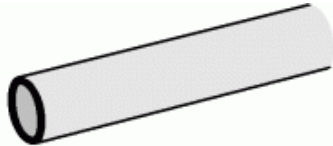
California State Contractors
License # 528260

714-630-3390

A-1 Fence Company
2831 E. LA CRESTA AVE.
Anaheim, CA 92806
FAX 630-6013
www.alfence.com
info@alfence.com

Full Weight Pipe

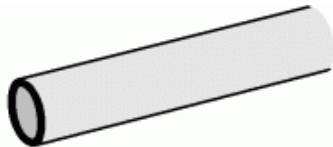
Schedule 40 or SS-40



Record #	Size	Price/Ea.
00286	1 3/8"	Request a Quote
00287	1 5/8"	Request a Quote
00288	1 7/8"	Request a Quote
00289	2 3/8"	Request a Quote
00290	2 7/8"	Request a Quote
00291	3 1/2"	Request a Quote
00292	4"	Request a Quote
00293	4 1/2"	Request a Quote
00294	5 9/16"	Request a Quote
00295	6 5/8"	Request a Quote
00296	8 5/8"	Request a Quote

Full Weight Pipe

Domestic Pipe or SS-40



Record #	Size	Price/Ea.
00297	1 5/8"	Request a Quote
00298	1 7/8"	Request a Quote
00299	2 3/8"	Request a Quote
00300	2 7/8"	Request a Quote
00301	3 1/2"	Request a Quote
00302	4"	Request a Quote



FENCE COMPANY

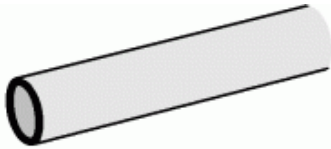
California State Contractors
License # 528260

714-630-3390

A-1 Fence Company
2831 E. LA CRESTA AVE.
Anaheim, CA 92806
FAX 630-6013
www.alfence.com
info@alfence.com

Full Weight Pipe

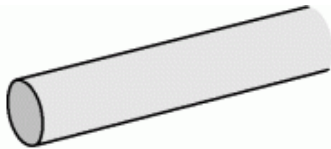
Domestic



Record #	Size	Price/Ea.
00303	4 1/2"	Request a Quote
00304	5 9/16"	Request a Quote
00305	6 5/8"	Request a Quote
00306	8 5/8"	Request a Quote

Color Tubing

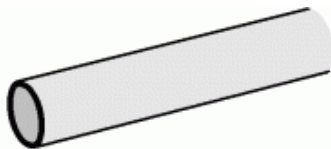
16 Gauge



Record #	Size	Price/Ea.
00307	1 3/8"	Request a Quote
00308	1 7/8"	Request a Quote
00309	2 3/8"	Request a Quote
00310	2 7/8"	Request a Quote

Color Structural Pipe

Structural Grade or SS-20



Record #	Size	Price/Ea.
00311	1 5/8"	Request a Quote
00312	1 7/8"	Request a Quote
00313	2 3/8"	Request a Quote
00314	2 7/8"	Request a Quote



FENCE COMPANY

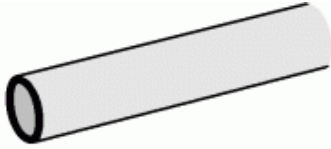
California State Contractors
License # 528260

714-630-3390

A-1 Fence Company
2831 E. LA CRESTA AVE.
Anaheim, CA 92806
FAX 630-6013
www.alfence.com
info@alfence.com

Color Full Weight Pipe

Schedule 40 or SS-40



Record #	Size	Price/Ea.
00317	1 5/8"	Request a Quote
00318	1 7/8"	Request a Quote
00319	2 3/8"	Request a Quote
00320	2 7/8"	Request a Quote

Tension Band

Color Regular - with 5/16" x 1 1/4" Bolt



Record #	Size	Price/Ea.
00328	1 7/8"	Request a Quote
00329	2 3/8"	Request a Quote
00330	2 7/8"	Request a Quote



FENCE COMPANY

California State Contractors
License # 528260

714-630-3390

A-1 Fence Company
2831 E. LA CRESTA AVE.
Anaheim, CA 92806
FAX 630-6013
www.alfence.com
info@alfence.com

Tension Band

Regular



Record #	Size	Price/Ea.
00336	1 3/8"	Request a Quote
00336-sack	1 3/8"	Request a Quote
00337	1 5/8"	Request a Quote
00337-sack	1 5/8"	Request a Quote
00338	1 7/8"	Request a Quote
00338-sack	1 7/8"	Request a Quote
00339	2 3/8"	Request a Quote
00339-sack	2 3/8"	Request a Quote
00340	2 7/8"	Request a Quote
00340-sack	2 7/8"	Request a Quote
00341	3 1/2"	Request a Quote
00341-sack	3 1/2"	Request a Quote
00342	4"	Request a Quote
00342-sack	4"	Request a Quote



FENCE COMPANY

California State Contractors
License # 528260

714-630-3390

A-1 Fence Company
2831 E. LA CRESTA AVE.
Anaheim, CA 92806
FAX 630-6013
www.alfence.com
info@alfence.com

Tension Band

Heavy - with 3/8" x 1 1/2" Bolt

Record #	Size	Price/Ea.
00357	1 5/8"	Request a Quote
00357-sack	1 5/8"	Request a Quote
00358	1 7/8"	Request a Quote
00358-sack	1 7/8"	Request a Quote
00359	2 3/8"	Request a Quote
00359-sack	2 3/8"	Request a Quote
00360	2 7/8"	Request a Quote
00360-sack	2 7/8"	Request a Quote
00361	3 1/2"	Request a Quote
00361-sack	3 1/2"	Request a Quote
00362	4"	Request a Quote
00362-sack	4"	Request a Quote
00363	4 1/2"	Request a Quote
00363-sack	4 1/2"	Request a Quote
00364	5 9/16"	Request a Quote
00364-sack	5 9/16"	Request a Quote
00365	6 5/8"	Request a Quote
00365-sack	6 5/8"	Request a Quote
00366	8 5/8"	Request a Quote
00366-sack	8 5/8"	Request a Quote



Brace Band

Color Regular - with 5/16" x 1 1/4" Bolt

Record #	Size	Price/Ea.
00367	1 5/8"	Request a Quote
00368	1 7/8"	Request a Quote
00369	2 3/8"	Request a Quote
00370	2 3/8"	Request a Quote





FENCE COMPANY

California State Contractors
License # 528260

714-630-3390

A-1 Fence Company
2831 E. LA CRESTA AVE.
Anaheim, CA 92806
FAX 630-6013
www.alfence.com
info@alfence.com

Brace Band

Regular



Record #	Size	Price/Ea.
00378	1 7/8"	Request a Quote
00378-sack	7/8"	Request a Quote
00379	2 3/8"	Request a Quote
00379-sack	2 3/8"	Request a Quote
00380	2 7/8"	Request a Quote
00380-sack	2 7/8"	Request a Quote
00381	3 1/2"	Request a Quote
00381-sack	3 1/2"	Request a Quote
00382	4"	Request a Quote
00382-sack	4"	Request a Quote

Brace Band

Heavy - with 3/8" x 1 1/2" Bolt



Record #	Size	Price/Ea.
00397	1 5/8"	Request a Quote
00397-sack	1 5/8"	Request a Quote
00398	1 7/8"	Request a Quote
00398-sack	1 7/8"	Request a Quote
00399	2 3/8"	Request a Quote
00399-sack	2 3/8"	Request a Quote
00400	2 7/8"	Request a Quote
00400-sack	2 7/8"	Request a Quote
00401	3 1/2"	Request a Quote
00401-sack	3 1/2"	Request a Quote
00402	4"	Request a Quote
00402-sack	4"	Request a Quote
00403	4 1/2"	Request a Quote
00403-sack	4 1/2"	Request a Quote
00404	5 9/16"	Request a Quote
00404-sack	5 9/16"	Request a Quote
00405	6 5/8"	Request a Quote
00405-sack	6 5/8"	Request a Quote
00406	8 5/8"	Request a Quote
00406-sack	8 5/8"	Request a Quote



FENCE COMPANY

California State Contractors
License # 528260

714-630-3390

A-1 Fence Company
2831 E. LA CRESTA AVE.
Anaheim, CA 92806
FAX 630-6013
www.alfence.com
info@alfence.com

Cap

Color Aluminum



Record #	Size	Price/Ea.
00407	1 3/8"	Request a Quote
00408	1 5/8"	Request a Quote
00408	1 7/8"	Request a Quote
00409	2 3/8"	Request a Quote

Cap

Color Pressed Steel



Record #	Size	Price/Ea.
00416	2 7/8"	Request a Quote
00430	1 5/8"	Request a Quote
00431	1 7/8"	Request a Quote
00432	2 3/8"	Request a Quote
00434	4"	Request a Quote

Cap

Die-Cast Aluminum



Record #	Size	Price/Ea.
00426	1 3/8"	Request a Quote
00427	1 5/8"	Request a Quote
00428	1 7/8"	Request a Quote
00429	2 3/8"	Request a Quote



FENCE COMPANY

California State Contractors
License # 528260

714-630-3390

A-1 Fence Company
2831 E. LA CRESTA AVE.
Anaheim, CA 92806
FAX 630-6013
www.alfence.com
info@alfence.com

Cap

Pressed Steel



Record #	Size	Price/Ea.
00451	1 3/8"	Request a Quote
00451-sack	1 3/8"	Request a Quote
00452	1 5/8"	Request a Quote
00452-sack	1 5/8"	Request a Quote
00453	1 7/8"	Request a Quote
00453-sack	1 7/8"	Request a Quote
00454	2 3/8"	Request a Quote
00454-sack	2 3/8"	Request a Quote
00455	2 7/8"	Request a Quote
00455-sack	2 7/8"	Request a Quote
00456	3 1/2"	Request a Quote
00456-sack	3 1/2"	Request a Quote
00457	4"	Request a Quote
00457-sack	4"	Request a Quote
00458	4 1/2"	Request a Quote
00458-sack	4 1/2"	Request a Quote
00460	6 5/8"	Request a Quote
00460-sack	6 5/8"	Request a Quote



FENCE COMPANY

California State Contractors
License # 528260

714-630-3390

A-1 Fence Company
2831 E. LA CRESTA AVE.
Anaheim, CA 92806
FAX 630-6013
www.alfence.com
info@alfence.com

Cap

Malleable



Record #	Size	Price/Ea.
00461	1 7/8"	Request a Quote
00461-sack	1 7/8"	Request a Quote
00462	2 3/8"	Request a Quote
00462-sack	2 3/8"	Request a Quote
00463	2 7/8"	Request a Quote
00463-sack	2 7/8"	Request a Quote
00464	3 1/2"	Request a Quote
00464-sack	3 1/2"	Request a Quote
00465	4"	Request a Quote
00465-sack	4"	Request a Quote
00466	4 1/2"	Request a Quote
00466-sack	4 1/2"	Request a Quote
00467	5 9/16"	Request a Quote
00467-sack	5 9/16"	Request a Quote
00468	6 5/8"	Request a Quote
00468-sack	6 5/8"	Request a Quote
00469	8 5/8"	Request a Quote
00469-sack	8 5/8"	Request a Quote

Eye Top

Color Aluminum



Record #	Size	Price/Ea.
00476	1 5/8" x 1 3/8"	Request a Quote
00477	1 7/8" x 1 3/8"	Request a Quote



FENCE COMPANY

California State Contractors
License # 528260

714-630-3390

A-1 Fence Company
2831 E. LA CRESTA AVE.
Anaheim, CA 92806
FAX 630-6013
www.alfence.com
info@alfence.com

Eye Top

Color Steel



Record #	Size	Price/Ea.
00479	1 7/8" x 5/8"	Request a Quote
00480	2 3/8" x 1 5/8"	Request a Quote
00481	2 7/8" x 1 5/8"	Request a Quote

Eye Top

Die-Cast Aluminum



Record #	Size	Price/Ea.
00487	1 3/8"	Request a Quote

Eye Top

Pressed Steel



Record #	Size	Price/Ea.
00492	1 5/8" x 1 5/8"	Request a Quote
00492-sack	1 5/8" x 1 5/8"	Request a Quote
00493	1 7/8" x 1 5/8"	Request a Quote
00493-sack	1 7/8" x 1 5/8"	Request a Quote
00494	2 3/8" x 1 5/8"	Request a Quote
00494-sack	2 3/8" x 1 5/8"	Request a Quote
00495	2 7/8" x 1 5/8"	Request a Quote
00495-sack	2 7/8" x 1 5/8"	Request a Quote
00496	4" x 1 5/8"	Request a Quote
00496-sack	4" x 1 5/8"	Request a Quote



FENCE COMPANY

California State Contractors
License # 528260

714-630-3390

A-1 Fence Company
2831 E. LA CRESTA AVE.
Anaheim, CA 92806
FAX 630-6013
www.alfence.com
info@alfence.com

Eye Top

Malleable



Record #	Size	Price/Ea.
00497	2 3/8" x 1 5/8"	Request a Quote
00497-sack	2 3/8" x 1 5/8"	Request a Quote
00498	2 7/8" x 1 7/8"	Request a Quote
00498-sack	2 7/8" x 1 7/8"	Request a Quote
00499	3 1/2" x 1 5/8" or 1 7/8"	Request a Quote
00499-sack	3 1/2" x 1 5/8" or 1 7/8"	Request a Quote
00500	4" x 1 5/8" or 1 7/8"	Request a Quote
00500-sack	4" x 1 5/8" or 1 7/8"	Request a Quote

Barb Wire Arm

Upright Pressed Steel



Record #	Size	Price/Ea.
00513	1 7/8" x 1 5/8"	Request a Quote
00513-sack	1 7/8" x 1 5/8"	Request a Quote
00514	2 3/8" x 1 5/8"	Request a Quote
00514-sack	2 3/8" x 1 5/8"	Request a Quote

Barb Wire Arm

Color 45 deg. Pressed Steel



Record #	Size	Price/Ea.
00515	1 7/8" x 5/8"	Request a Quote
00516	2 3/8" x 1 5/8"	Request a Quote



FENCE COMPANY

California State Contractors
License # 528260

714-630-3390

A-1 Fence Company
2831 E. LA CRESTA AVE.
Anaheim, CA 92806
FAX 630-6013
www.alfence.com
info@alfence.com

Barb Wire Arm

45 deg. Pressed Steel



Record #	Size	Price/Ea.
00518	1 7/8" x 1 5/8"	Request a Quote
00518-sack	1 7/8" x 1 5/8"	Request a Quote
00519	2 3/8" x 1 5/8"	Request a Quote
00519-sack	2 3/8" x 1 5/8"	Request a Quote
00520	2 7/8" x 1 5/8"	Request a Quote
00520-sack	2 7/8" x 1 5/8"	Request a Quote

Barb Wire Arm

V Arm Pressed Steel



Record #	Size	Price/Ea.
00522	1 7/8" x 1 5/8"	Request a Quote
00522-sack	1 7/8" x 1 5/8"	Request a Quote
00524	2 7/8" x 1 5/8"	Request a Quote

Corner Barb Wire Arm

Color Malleable



Record #	Size	Price/Ea.
00525	2 7/8"	Request a Quote



FENCE COMPANY

California State Contractors
License # 528260

714-630-3390

A-1 Fence Company
2831 E. LA CRESTA AVE.
Anaheim, CA 92806
FAX 630-6013
www.alfence.com
info@alfence.com

Corner Barb Wire Arm

Malleable



Record #	Size	Price/Ea.
00537	2 3/8"	Request a Quote
00537-sack	2 3/8"	Request a Quote
00538	2 7/8"	Request a Quote
00538-sack	2 7/8"	Request a Quote
00539	4"	Request a Quote

Corner Barb Wire

V Arm



Record #	Size	Price/Ea.
00544	2 3/8"	Request a Quote
00544-sack	2 3/8"	Request a Quote
00545	2 7/8"	Request a Quote
00545-sack	2 7/8"	Request a Quote
00546	4"	Request a Quote
00546-sack	4"	Request a Quote

Corner Barb Wire

V Arm Malleable



Record #	Size	Price/Ea.
00547	2 3/8"	Request a Quote
00548	2 7/8"	Request a Quote
00548-sack	2 7/8"	Request a Quote



FENCE COMPANY

California State Contractors
License # 528260

714-630-3390

A-1 Fence Company
2831 E. LA CRESTA AVE.
Anaheim, CA 92806
FAX 630-6013
www.alfence.com
info@alfence.com

Rail-End

Color Aluminum



Record #
00551

Size
1 3/8"

Price/Ea.
Request a Quote

Rail-End

Color Steel



Record #
00553

Size
1 5/8"

Price/Ea.
Request a Quote

Rail-End

Die-Cast Aluminum



Record #
00556

Size
1 3/8"

Price/Ea.
Request a Quote



FENCE COMPANY

California State Contractors
License # 528260

714-630-3390

A-1 Fence Company
2831 E. LA CRESTA AVE.
Anaheim, CA 92806
FAX 630-6013
www.alfence.com
info@alfence.com

Rail-End

Color Pressed Steel



Record #	Size	Price/Ea.
00561	1 5/8"	Request a Quote

Rail-End

Pressed Steel



Record #	Size	Price/Ea.
00562	1 5/8"	Request a Quote
00562-sack	1 5/8"	Request a Quote
00563	1 7/8"	Request a Quote
00563-sack	1 7/8"	Request a Quote
00564	2 3/8"	Request a Quote
00564-sack	2 3/8"	Request a Quote
00565	2 7/8"	Request a Quote
00565-sack	2 7/8"	Request a Quote

Rail-End

Malleable



Record #	Size	Price/Ea.
00566	1 5/8"	Request a Quote
00566-sack	1 5/8"	Request a Quote
00567	1 7/8"	Request a Quote
00567-sack	1 7/8"	Request a Quote
00568	2 3/8"	Request a Quote
00568-sack	2 3/8"	Request a Quote



FENCE COMPANY

California State Contractors
License # 528260

714-630-3390

A-1 Fence Company
2831 E. LA CRESTA AVE.
Anaheim, CA 92806
FAX 630-6013
www.alfence.com
info@alfence.com

2 Hole Rail-End

Color Pressed Steel



Record #
00570

Size
1 5/8"

Price/Ea.
Request a Quote

2 Hole Rail-End

Malleable



Record #
00571
00571-sack

Size
1 5/8"
1 5/8"

Price/Ea.
Request a Quote
Request a Quote

2 Hole Rail-End

Pressed Steel



Record #
00573

Size
1 7/8"

Price/Ea.
Request a Quote



FENCE COMPANY

California State Contractors
License # 528260

714-630-3390

A-1 Fence Company
2831 E. LA CRESTA AVE.
Anaheim, CA 92806
FAX 630-6013
www.alfence.com
info@alfence.com

Sleeve

6" Color



Record #	Size	Price/Ea.
00576	1 3/8"	Request a Quote
00577	1 5/8"	Request a Quote

Sleeve

6"



Record #	Size	Price/Ea.
00581	1 3/8"	Request a Quote
00581-sack	1 3/8"	Request a Quote
00582	1 5/8"	Request a Quote
00582-sack	1 5/8"	Request a Quote
00584	1 7/8"	Request a Quote
00584-sack	1 7/8"	Request a Quote

Truss Rod

3/8"



Record #	Size	Price/Ea.
00591	10' 6"	Request a Quote
00592	11'	Request a Quote
00593	12'	Request a Quote
00594	20'	Request a Quote



FENCE COMPANY

California State Contractors
License # 528260

714-630-3390

A-1 Fence Company
2831 E. LA CRESTA AVE.
Anaheim, CA 92806
FAX 630-6013
www.alfence.com
info@alfence.com

Truss Rod

Color 3/8"



Record #	Size	Price/Ea.
00595	12'	Request a Quote

Tightener

Truss Rod - Industrial



Record #	Size	Price/Ea.
00597	1" x 1" x 6"	Request a Quote

Tightener

Truss Rod - Industrial



Record #	Size	Price/Ea.
00598	1" x 1" x 6"	Request a Quote



FENCE COMPANY

California State Contractors
License # 528260

714-630-3390

A-1 Fence Company
2831 E. LA CRESTA AVE.
Anaheim, CA 92806
FAX 630-6013
www.alfence.com
info@alfence.com

Tension Bar

1/4" x 3/4" - Color Fiberglass



Record #	Size	Price/Ea.
00601	34"	Request a Quote
00602	40"	Request a Quote
00603	46"	Request a Quote
00604	58"	Request a Quote
00605	70"	Request a Quote

Tension Bar

3/16" x 3/4" - Color



Record #	Size	Price/Ea.
00606	34"	Request a Quote
00607	40"	Request a Quote
00608	46"	Request a Quote
00609	58"	Request a Quote
00610	70"	Request a Quote
00611	82"	Request a Quote
00612	94"	Request a Quote
00613	118"	Request a Quote
00614	42"	Request a Quote

Tension Bar

3/16" x 5/8" - Light



Record #	Size	Price/Ea.
00616	34"	Request a Quote
00617	58"	Request a Quote
00618	46"	Request a Quote
00619	58"	Request a Quote
00620	70"	Request a Quote
00621	82"	Request a Quote
00622	94"	Request a Quote



FENCE COMPANY

California State Contractors
License # 528260

714-630-3390

A-1 Fence Company
2831 E. LA CRESTA AVE.
Anaheim, CA 92806
FAX 630-6013
www.alfence.com
info@alfence.com

Tension Bar

3/16" x 3/4" - Regular



Record #	Size	Price/Ea.
00624	34"	Request a Quote
00625	42"	Request a Quote
00626	46"	Request a Quote
00627	58"	Request a Quote
00628	70"	Request a Quote
00629	82"	Request a Quote
00630	94"	Request a Quote
00631	118"	Request a Quote
00632	142"	Request a Quote

Tension Bar

1/4" x 3/4" - Heavy



Record #	Size	Price/Ea.
00633	46"	Request a Quote
00635	58"	Request a Quote
00636	70"	Request a Quote
00637	82"	Request a Quote
00638	9	Request a Quote
00639	118"	Request a Quote
00640	142"	Request a Quote



FENCE COMPANY


California State Contractors
License # 528260

714-630-3390

A-1 Fence Company
2831 E. LA CRESTA AVE.
Anaheim, CA 92806
FAX 630-6013
www.alfence.com
info@alfence.com

Carriage Bolt

Carriage Bolt

	Record #	Size	Price/Ea.
	00641	5/16" x 1 1/4"	Request a Quote
	00641-bag	5/16" x 1 1/4"	Request a Quote
	00641-box	5/16" x 1 1/4"	Request a Quote
	00642	5/16" x 1 1/2"	Request a Quote
	00643	5/16" x 2"	Request a Quote
	00644	5/16" x 2 1/4"	Request a Quote
	00646	3/8" x 1 1/4"	Request a Quote
	00647	3/8" x 1 1/2"	Request a Quote
	00647-bag	3/8" x 1 1/2"	Request a Quote
	00647-box	3/8" x 1 1/2"	Request a Quote
	00648	3/8" x 2"	Request a Quote
	00649	3/8" x 2 1/4"	Request a Quote
	00650	3/8" x 2 1/2"	Request a Quote
	00651	3/8" x 3"	Request a Quote
00652	3/8" x 3 1/2"	Request a Quote	

Hog Ring

Hog Ring

	Record #	Size	Price/Ea.
	00662	9 GA.	Request a Quote
	00662-bag	9 GA.	Request a Quote
	00662-bag-black	9 GA.	Request a Quote
	00662-black	9 GA.	Request a Quote
	00662-green	9 GA.	Request a Quote



FENCE COMPANY

California State Contractors
License # 528260

714-630-3390

A-1 Fence Company
2831 E. LA CRESTA AVE.
Anaheim, CA 92806
FAX 630-6013
www.alfence.com
info@alfence.com

Hog Ring

Hog Ring



Record #	Size	Price/Ea.
00666	12 1/2 GA.	Request a Quote
00666-bag	12 1/2 GA.	Request a Quote
00668	9 GA.	Request a Quote
00668-bag	9 GA.	Request a Quote

Tie Wire

11 GA. Color Steel



Record #	Size	Price/Ea.
00672	6 1/2" (1 7/8")	Request a Quote
00672-bag-black	6 1/2" (1 7/8")	Request a Quote
00673	8 1/2" (2 3/8")	Request a Quote
00673-bag-black	8 1/2" (2 3/8")	Request a Quote
00673-bag-green	8 1/2" (2 3/8")	Request a Quote

Tie Wire

11 GA. Color Steel



Record #	Size	Price/Ea.
00674	12"	Request a Quote
00675	18"	Request a Quote



FENCE COMPANY

California State Contractors
License # 528260

714-630-3390

A-1 Fence Company
2831 E. LA CRESTA AVE.
Anaheim, CA 92806
FAX 630-6013
www.alfence.com
info@alfence.com

Tie Wire

9 GA. Color Steel



Record #	Size	Price/Ea.
00676	6 1/2" (1 7/8")	Request a Quote
00676-bag-black	6 1/2" (1 7/8")	Request a Quote
00676-bag-green	6 1/2" (1 7/8")	Request a Quote
00677	8 1/2" (2 3/8")	Request a Quote
00677-bag-black	8 1/2" (2 3/8")	Request a Quote
00677-bag-green	8 1/2" (2 3/8")	Request a Quote
00678	12"	Request a Quote
00678-black	12"	Request a Quote
00678-green	12"	Request a Quote
00679	18"	Request a Quote
00679-black	18"	Request a Quote
00679-green	18"	Request a Quote

Tie Wire

6 GA. Aluminum



Record #	Size	Price/Ea.
00681	6 1/2"	Request a Quote
00681-bag	6 1/2"	Request a Quote
00682	8 1/2"	Request a Quote
00682-bag	8 1/2"	Request a Quote
00683	9 1/2"	Request a Quote



FENCE COMPANY

California State Contractors
License # 528260

714-630-3390

A-1 Fence Company
2831 E. LA CRESTA AVE.
Anaheim, CA 92806
FAX 630-6013
www.alfence.com
info@alfence.com

Tie Wire 6 GA

6 GA. Aluminum



Record #	Size	Price/Ea.
00684	12"	Request a Quote
00685	18"	Request a Quote

Tie Wire

12 GA. Steel



Record #	Size	Price/Ea.
00686	6 1/2" (1 5/8")	Request a Quote
00686-bag	6 1/2" (1 5/8")	Request a Quote

Tie Wire

11 GA. Color Steel



Record #	Size	Price/Ea.
00687	7 1/2" (1 7/8")	Request a Quote
00687-bag	7 1/2" (1 7/8")	Request a Quote
00688	8 1/2" (2 3/8")	Request a Quote
00688-bag	8 1/2" (2 3/8")	Request a Quote
00689	9 1/2" (2 7/8")	Request a Quote
00690	12" (3 1/2")	Request a Quote
00691	18" (4 1/2")	Request a Quote



FENCE COMPANY

California State Contractors
License # 528260

714-630-3390

A-1 Fence Company
2831 E. LA CRESTA AVE.
Anaheim, CA 92806
FAX 630-6013
www.alfence.com
info@alfence.com

Tie Wire

9 GA. Steel



Record #	Size	Price/Ea.
00692	6 1/2" (1 5/8")	Request a Quote
00692-bag	6 1/2" (1 5/8")	Request a Quote
00693	7 1/2" (1 7/8")	Request a Quote
00693-bag	7 1/2" (1 7/8")	Request a Quote
00694	8 1/2" (2 3/8")	Request a Quote
00694-bag	8 1/2" (2 3/8")	Request a Quote
00695	9 1/2" (2 7/8")	Request a Quote
00695-bag	9 1/2" (2 7/8")	Request a Quote
00696	12" (3 1/2")	Request a Quote
00697	18" (4 1/2")	Request a Quote

Tension Wire

Color Smooth



Record #	Size	Price/Ea.
00700	9 GA.	Request a Quote
00700-black	9 GA.	Request a Quote
00700-green	9 GA.	Request a Quote
00700-roll	9 GA.	Request a Quote
00700-roll-black	9 GA.	Request a Quote
00700-roll-green	9 GA.	Request a Quote

Tension Wire

Smooth Wire



Record #	Size	Price/Ea.
00701	11 GA.	Request a Quote
00701-roll	11 GA.	Request a Quote
00703	9 GA.	Request a Quote
00703-roll	9 GA.	Request a Quote
00704	6 GA.	Request a Quote
00704-roll	6 GA.	Request a Quote



FENCE COMPANY

California State Contractors
License # 528260

714-630-3390

A-1 Fence Company
2831 E. LA CRESTA AVE.
Anaheim, CA 92806
FAX 630-6013
www.alfence.com
info@alfence.com

Tension Wire

Coil Spring Galvanized



Record #	Size	Price/Ea.
00708	7 GA.	Request a Quote
00708-roll	7 GA.	Request a Quote

Barbed Wire

4 pt. Import



Record #	Size	Price/Ea.
00714	12 1/2 GA.	Request a Quote
00714-roll	12 1/2 GA.	Request a Quote

Barbed Wire

Barbless Wire



Record #	Size	Price/Ea.
00715	11 GA.	Request a Quote
00715-roll	11 GA.	Request a Quote



FENCE COMPANY

California State Contractors
License # 528260

714-630-3390

A-1 Fence Company
2831 E. LA CRESTA AVE.
Anaheim, CA 92806
FAX 630-6013
www.alfence.com
info@alfence.com

Barbed Obstacle Wire

Galvanized (18" Spacing)



Record #	Size
00723-roll	18"

Price/Ea.
Request a Quote

Barbed Obstacle Wire

Maze (16" Spacing) 20' per Roll



Record #	Size
00724-roll	24"

Price/Ea.
Request a Quote

Barbed Obstacle Wire

Supermaze (12" Spacing) 25' per Roll



Record #	Size
00725-roll	30"

Price/Ea.
Request a Quote



FENCE COMPANY

California State Contractors
License # 528260

714-630-3390

A-1 Fence Company
2831 E. LA CRESTA AVE.
Anaheim, CA 92806
FAX 630-6013
www.alfence.com
info@alfence.com

Gate Frame Hinge - Color

Color - Regular, 5/8" Pin, 3/8 x 2" Bolt



Record #	Size	Price/Ea.
00726	1 3/8" x 5/8"	Request a Quote
00727	1 5/8" x 5/8"	Request a Quote

Gate Frame Hinge - Regular - Color

Color - Regular, 5/8" Pin, 3/8 x 2" Bolt



Record #	Size	Price/Ea.
00728	1 7/8" x 5/8"	Request a Quote

Gate Frame Hinge - Heavy

Heavy, 5/8" Pin, 3/8 x 2 1/4" Bolt



Record #	Size	Price/Ea.
00730	1 3/8" x 5/8"	Request a Quote
00737	1 5/8" x 5/8"	Request a Quote
00738	1 7/8" x 5/8"	Request a Quote



FENCE COMPANY

California State Contractors
License # 528260

714-630-3390

A-1 Fence Company
2831 E. LA CRESTA AVE.
Anaheim, CA 92806
FAX 630-6013
www.alfence.com
info@alfence.com

Gate Frame Hinge - Heavy

Heavy, 5/8" Pin, 3/8 x 2 1/4" Bolt



Record #	Size
00743	1 7/8" x 5/8"

Price/Ea.
Request a Quote

Post Hinge Regular - Color

Color - Regular, 5/8" Pin, 3/8 x 2 1/4" & 3" Bolt



Record #	Size
00744	2 3/8" x 5/8"
00745	2 7/8" x 5/8"

Price/Ea.
Request a Quote
Request a Quote

Post Hinge - Heavy

Heavy, 5/8" Pin, 3/8 x 3" & 3 1/2" Bolt



Record #	Size
00754	2 3/8" x 5/8"
00755	2 7/8" x 5/8"

Price/Ea.
Request a Quote
Request a Quote



FENCE COMPANY

California State Contractors
License # 528260

714-630-3390

A-1 Fence Company
2831 E. LA CRESTA AVE.
Anaheim, CA 92806
FAX 630-6013
www.alfence.com
info@alfence.com

Industrial Hinge - Color

Color



Record #	Size	Price/Ea.
00760	2 3/8" x 1 5/8" or 1 7/8"	Request a Quote
00761	2 7/8" x 1 5/8" or 1 7/8"	Request a Quote
00762	4" x 1 5/8" or 1 7/8 "	Request a Quote
00763	6 5/8" x 1 5/8" or 1 7/8 "	Request a Quote

Industrial Hinge

Pressed Steel



Record #	Size	Price/Ea.
00778	2 7/8"	Request a Quote
00780	3 1/2"	Request a Quote
00782	4" x 1 5/8" or 1 7/8"	Request a Quote
00784	4 1/2"	Request a Quote
00785	5 9/16"	Request a Quote
00786	6 5/8"	Request a Quote
00787	1 5/8" x 5/8"	Request a Quote

Safety Track Wheel - Pressed Steel

Pressed Steel, 5" dia.



Record #	Size	Price/Ea.
00800	5" x 1 5/8"	Request a Quote
00801	5" x 1 7/8"	Request a Quote



FENCE COMPANY

California State Contractors
License # 528260

714-630-3390

A-1 Fence Company
2831 E. LA CRESTA AVE.
Anaheim, CA 92806
FAX 630-6013
www.alfence.com
info@alfence.com

Safety Track Wheel - Pressed Steel - Pressed Steel Bracket

Pressed Steel, 5" dia. Pressed Steel Bracket



Record #	Size	Price/Ea.
00802	5" x 1 5/8"	Request a Quote
00803	5" x 1 7/8"	Request a Quote

Drop Rod assembly - Industrial - Color - w/ Pipe Rod

Industrial Color, with Pipe Rod



Record #	Size	Price/Ea.
00845	1 5/8"	Request a Quote
00846	-	Request a Quote

Drop Rod assembly - Residential

Residential



Record #	Size	Price/Ea.
00847	1 7/8" x 1 3/8"	Request a Quote



FENCE COMPANY

California State Contractors
License # 528260

714-630-3390

A-1 Fence Company
2831 E. LA CRESTA AVE.
Anaheim, CA 92806
FAX 630-6013
www.alfence.com
info@alfence.com

Drop Rod assembly - Industrial - w/ Pipe Rod

Industrial, with 1 3/8" Pipe Rod



Record #	Size	Price/Ea.
00849	1 5/8"	Request a Quote
00850	1 7/8"	Request a Quote

Industrial Forks and Guides

Forks Use 3/8 x 2 1/4" & 2 1/2" Bolts



Record #	Size	Price/Ea.
00851	1 5/8"	Request a Quote
00852	1 5/8"	Request a Quote
00853	1 7/8"	Request a Quote
00854	1 7/8"	Request a Quote

Rolo Latch

Pressed Steel, Uses Heavy Brace Brands



Record #	Size	Price/Ea.
00870	1 5/8"	Request a Quote
00872	1 7/8"	Request a Quote



FENCE COMPANY

California State Contractors
License # 528260

714-630-3390

A-1 Fence Company
2831 E. LA CRESTA AVE.
Anaheim, CA 92806
FAX 630-6013
www.alfence.com
info@alfence.com

Wheel Carrier - Residential - Double

Residential Double



Record #	Size	Price/Ea.
00898	6" Dia.	Request a Quote
00899	8" Dia.	Request a Quote

Wheel Carrier - Industrial - Double

Industrial Double



Record #	Size	Price/Ea.
00900	6" Dia.	Request a Quote
00901	8" Dia.	Request a Quote

Wheel Carrier - Heavy Duty Industrial - Double

Heavy Duty Industrial Double



Record #	Size	Price/Ea.
00903	8" Dia.	Request a Quote



FENCE COMPANY

California State Contractors
License # 528260

714-630-3390

A-1 Fence Company
2831 E. LA CRESTA AVE.
Anaheim, CA 92806
FAX 630-6013
www.alfence.com
info@alfence.com

Wheel Carrier - Rough n' Ready Pneumatic

Rough N Ready



Record #
00904

Size
8" Dia.

Price/Ea.
Request a Quote

Wheel Carrier - V-Groove - Double

V-Groove Double



Record #
00905

Size
6" Dia.

Price/Ea.
Request a Quote

Wheel Carrier - Rubber Single

Rubber Single



Record #
00906
00907

Size
1 5/8" x 6"
1 5/8" x 8"

Price/Ea.
Request a Quote
Request a Quote



FENCE COMPANY

California State Contractors
License # 528260

714-630-3390

A-1 Fence Company
2831 E. LA CRESTA AVE.
Anaheim, CA 92806
FAX 630-6013
www.alfence.com
info@alfence.com

Wheel - Replacment

Replacement Wheel



Record #	Size	Price/Ea.
00908	6" Dia.	Request a Quote
00909	8" Dia.	Request a Quote
00910	6" Dia.	Request a Quote
00911	8" Dia.	Request a Quote
00912	6" Dia.	Request a Quote
00913	6" Dia.	Request a Quote

Wheel - Bracket Only

Rear Wheel Bracket Only



Record #	Size	Price/Ea.
00921	1 5/8"	Request a Quote
00922	1 7/8"	Request a Quote
00923	3" x 3" x 3"	Request a Quote

Wheel - Rear Wheel Only

Rear Wheel Only



Record #	Size	Price/Ea.
00925	5"	Request a Quote



FENCE COMPANY

California State Contractors
License # 528260

714-630-3390

A-1 Fence Company
2831 E. LA CRESTA AVE.
Anaheim, CA 92806
FAX 630-6013
www.alfence.com
info@alfence.com

Pipe Track Bracket - Regular

Regular



Record #	Size	Price/Ea.
00936	1 7/8"	Request a Quote
00937	2 3/8"	Request a Quote
00939	3 1/2" or 4" x 1 5/8"	Request a Quote

Pipe Track Bracket - Fasteners Not Included - Uses Heavy Brace Bands

Fasteners Not Included, Uses Heavy Brace Bands



Record #	Size	Price/Ea.
00945	1 5/8" Band Type	Request a Quote
00946	1 5/8" Flatback Type	Request a Quote

Gate Fork Latch - Heavy - Color

Color Heavy Duty



Record #	Size	Price/Ea.
00950	1 3/8" x 1 7/8"	Request a Quote



FENCE COMPANY


California State Contractors
License # 528260

714-630-3390

A-1 Fence Company
2831 E. LA CRESTA AVE.
Anaheim, CA 92806
FAX 630-6013
www.alfence.com
info@alfence.com

Gate Fork Latch

Malleable Iron

	Record #	Size	Price/Ea.
	00960	1 3/8" x 1 7/8"	Request a Quote
	00961	1 3/8" x 2 3/8"	Request a Quote
	00962	1 3/8" x 2 7/8"	Request a Quote
	00964	1 5/8" x 1 7/8"	Request a Quote
	00965	1 5/8" x 2 3/8"	Request a Quote
	00966	1 5/8" x 2 7/8"	Request a Quote
	00968	1 5/8" x 4"	Request a Quote
	00969	1 5/8" x 4 1/2"	Request a Quote
	00971	1 7/8" x 2 3/8"	Request a Quote
	00972	1 7/8" x 2 7/8"	Request a Quote
	00973	1 7/8" x 3 1/2"	Request a Quote
	00974	1 7/8" x 4"	Request a Quote
00975	1 7/8" x 4 1/2"	Request a Quote	

Butterfly Latch - Color

Master Color

	Record #	Size	Price/Ea.
	00996	1 3/8" x 2 3/8"	Request a Quote



FENCE COMPANY

California State Contractors
License # 528260

714-630-3390

A-1 Fence Company
2831 E. LA CRESTA AVE.
Anaheim, CA 92806
FAX 630-6013
www.alfence.com
info@alfence.com

Butterfly Latch - Regular

Regular



Record #	Size	Price/Ea.
01002	1 3/8" x 1 7/8"	Request a Quote
01003	1 3/8" x 2 3/8"	Request a Quote

Butterfly Latch - Flat Black

Flat Black



Record #	Size	Price/Ea.
01006	1 3/8"	Request a Quote

Gate Closer - Gravity - Color

Color Gravity



Record #	Size	Price/Ea.
01091	1 7/8" x 1 3/8"	Request a Quote
01092	2 3/8" x 1 3/8"	Request a Quote



FENCE COMPANY

California State Contractors
License # 528260

714-630-3390

A-1 Fence Company
2831 E. LA CRESTA AVE.
Anaheim, CA 92806
FAX 630-6013
www.alfence.com
info@alfence.com

Gate Closer - Gravity

Gravity



Record #
01096

Size
1 7/8" x 1 3/8"

Price/Ea.
Request a Quote

Gate Closer - Gravity

Gravity



Record #
01097

Size
1 3/8" x 2 3/8"

Price/Ea.
Request a Quote

Center Gate Stop - Mushroom

Malleable (Mushroom)



Record #
01098

Size
8" x 8" x 3"

Price/Ea.
Request a Quote



FENCE COMPANY

California State Contractors
License # 528260

714-630-3390

A-1 Fence Company
2831 E. LA CRESTA AVE.
Anaheim, CA 92806
FAX 630-6013
www.alfence.com
info@alfence.com

Duck Bill

Malleable



Record #
01101

Size
1 5/8"

Price/Ea.
Request a Quote



FENCE COMPANY

California State Contractors
License # 528260

714-630-3390

A-1 Fence Company
2831 E. LA CRESTA AVE.
Anaheim, CA 92806
FAX 630-6013
www.alfence.com
info@alfence.com

PDS SLATS - 10 L.F.

82 pcs. Per bag + Bottom Lock Strip



Record #	Size	Price/Ea.
01110	36"	Request a Quote
01110-bg	-	Request a Quote
01110-bl	-	Request a Quote
01110-br	-	Request a Quote
01110-g	-	Request a Quote
01110-gr	-	Request a Quote
01110-lb	-	Request a Quote
01110-rb	-	Request a Quote
01110-rw	-	Request a Quote
01110-w	-	Request a Quote
01111	42"	Request a Quote
01111-bg	-	Request a Quote
01111-bl	-	Request a Quote
01111-br	-	Request a Quote
01111-g	-	Request a Quote
01111-gr	-	Request a Quote
01111-lb	-	Request a Quote
01111-rb	-	Request a Quote
01111-rw	-	Request a Quote
01111-w	-	Request a Quote
01112	48"	Request a Quote
01112-bg	-	Request a Quote
01112-bl	-	Request a Quote
01112-br	-	Request a Quote
01112-g	-	Request a Quote
01112-gr	-	Request a Quote
01112-lb	-	Request a Quote
01112-rb	-	Request a Quote
01112-rw	-	Request a Quote
01112-w	-	Request a Quote



FENCE COMPANY

California State Contractors
License # 528260

714-630-3390

A-1 Fence Company
2831 E. LA CRESTA AVE.
Anaheim, CA 92806
FAX 630-6013
www.alfence.com
info@alfence.com

PDS SLATS - 10 L.F.

82 pcs. Per bag + Bottom Lock Strip



Record #	Size	Price/Ea.
01113	60"	Request a Quote
01113-bg	-	Request a Quote
01113-bl	-	Request a Quote
01113-br	-	Request a Quote
01113-g	-	Request a Quote
01113-gr	-	Request a Quote
01113-lb	-	Request a Quote
01113-rb	-	Request a Quote
01113-rw	-	Request a Quote
01113-w	-	Request a Quote
01114	72"	Request a Quote
01114-bg	-	Request a Quote
01114-bl	-	Request a Quote
01114-br	-	Request a Quote
01114-g	-	Request a Quote
01114-gr	-	Request a Quote
01114-lb	-	Request a Quote
01114-rb	-	Request a Quote
01114-rw	-	Request a Quote
01114-w	-	Request a Quote
01115	84"	Request a Quote
01115-bg	-	Request a Quote
01115-bl	-	Request a Quote
01115-br	-	Request a Quote
01115-g	-	Request a Quote
01115-gr	-	Request a Quote
01115-lb	-	Request a Quote
01115-rb	-	Request a Quote
01115-rw	-	Request a Quote
01115-w	-	Request a Quote



FENCE COMPANY

California State Contractors
License # 528260

714-630-3390

A-1 Fence Company
2831 E. LA CRESTA AVE.
Anaheim, CA 92806
FAX 630-6013
www.alfence.com
info@alfence.com

PDS SLATS - 10 L.F.

82 pcs. Per bag + Bottom Lock Strip



Record #	Size	Price/Ea.
01116	96"	Request a Quote
01116-bg	-	Request a Quote
01116-bl	-	Request a Quote
01116-br	-	Request a Quote
01116-g	-	Request a Quote
01116-gr	-	Request a Quote
01116-lb	-	Request a Quote
01116-rb	-	Request a Quote
01116-rw	-	Request a Quote
01116-w	-	Request a Quote
01117	120"	Request a Quote
01117-bg	-	Request a Quote
01117-bl	-	Request a Quote
01117-br	-	Request a Quote
01117-g	-	Request a Quote
01117-gr	-	Request a Quote
01117-lb	-	Request a Quote
01117-rb	-	Request a Quote
01117-rw	-	Request a Quote
01117-w	-	Request a Quote
01118	144"	Request a Quote
01118-bg	-	Request a Quote
01118-bl	-	Request a Quote
01118-br	-	Request a Quote
01118-g	-	Request a Quote
01118-gr	-	Request a Quote
01118-lb	-	Request a Quote
01118-rb	-	Request a Quote
01118-rw	-	Request a Quote
01118-w	-	Request a Quote



FENCE COMPANY

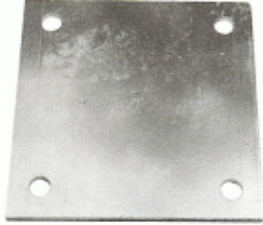
California State Contractors
License # 528260

714-630-3390

A-1 Fence Company
2831 E. LA CRESTA AVE.
Anaheim, CA 92806
FAX 630-6013
www.alfence.com
info@alfence.com

Custom Welded Floor Plates on Posts

Galvanized Flange Welded to your Post



Record #	Size	Price/Ea.
01136	3" x 6"	Request a Quote
01137	6" x 6"	Request a Quote
01138	8" x 8"	Request a Quote
01139	12" x 12"	Request a Quote

Concrete

Post Mix



Record #	Size	Price/Ea.
01141	60 lb. Bag	Request a Quote

Anchor Bolts - Expansion Type

Wedge Anchor



Record #	Size	Price/Ea.
01143	2 3/4" Long, 3/8" Dia.	Request a Quote
01143-box	2 3/4" Long, 3/8" Dia.	Request a Quote
01144	2 3/4" Long, 1/2" Dia.	Request a Quote
01144-box	2 3/4" Long, 1/2" Dia.	Request a Quote



FENCE COMPANY

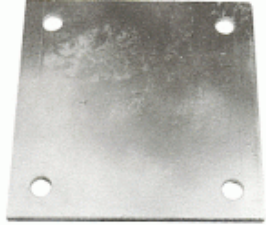
California State Contractors
License # 528260

714-630-3390

A-1 Fence Company
2831 E. LA CRESTA AVE.
Anaheim, CA 92806
FAX 630-6013
www.alfence.com
info@alfence.com

Floor Plate - Galvanized

Galvanized



Record #	Size	Price/Ea.
01145	3" x 6" x 1/4"	Request a Quote
01146	6" x 6" x 1/4"	Request a Quote
01147	8" x 8" x 1/4"	Request a Quote
01148	12" x 12" x 1/2"	Request a Quote