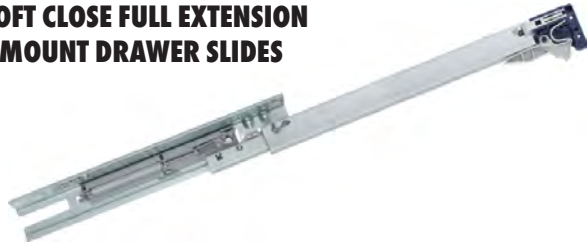


WURTH WOOD GROUP KV INVENTORY GUIDE



MUV SOFT CLOSE FULL EXTENSION UNDERMOUNT DRAWER SLIDES



- Hydraulic soft-close cylinder eliminates drawer "bounce back"
- Industry standard 32mm hole pattern
- Elongated front and rear mounting holes for fast adjustment
- Soft-close mechanism is field removable/replaceable
- Up to 5/8" drawer material thickness
- Release levers included
- 75 lb load rating

size	finish	box qty	item no.
9"	anochrome	4	MUVB9
10"	anochrome	4	MUVB10
14"	anochrome	6	MUVB14
15"	anochrome	6	MUVB15
16"	anochrome	6	MUVB16
18"	anochrome	6	MUVB18
20"	anochrome	6	MUVB20
21"	anochrome	6	MUVB21

KV 6400 STAINLESS STEEL DRAWER SLIDES



- Full extension
- 304 grade stainless steel
- Lever disconnect
- USDA H-1 approved grease
- 75 lb load rating
- Height: 1-49/64"
- Clearance: 0.51" + .030" -0" each side

size	finish	box qty	item no.
16"	stainless steel	1	6400PSS16
18"	stainless steel	1	6400PSS18
20"	stainless steel	1	6400PSS20

8404 FRONT MOUNTING BRACKETS



- For use with all KV8400 series product
- Non-handed snap on design

finish	box qty	item no.
zinc	400	8404B

MUV REAR MOUNTING BRACKET



item no.
MUVRBM

KV 1300 DRAWER SLIDES



- 3/4 extension
- Side mounting
- Ball bearing rollers
- Positive stop lever prevents accidental drawer removal
- Stay close design
- 75 lb load rating
- Height: 3"
- Clearance: 1/2" + 1/32" -0" each side

size	finish	box qty	item no.
18"	zinc	10	1300BZC18
20"	zinc	10	1300BZC20
22"	zinc	10	1300BZC22

REAR MOUNTING BRACKETS



8402



8403

- Non-handed snap-on design
- 2-3/4" maximum adjustment
- Fits all KV 8400 series slides

item no.
8402
8403

KV 8400/8405 DRAWER SLIDES



- 8400: Full extension drawer slide, 100 lb load rating
- 8405: 1" Overtravel drawer slide, 100 lb load rating
- Non-handed design for easy installation
- 32mm hole pattern with direct access mounting
- Lever disconnect for easy drawer removal
- Telescopic movement on steel ball bearings
- Height: 1-13/16"
- Clearance: 1/2" +1/32"-0" each side

KV 8400

size	finish	box qty	item no.
8"	anochrome	1 polybag	8400P8
8"	anochrome	10	8400B8
10"	anochrome	1 polybag	8400P10
10"	anochrome	10	8400B10
12"	anochrome	1 polybag	8400P12
12"	anochrome	10	8400B12
14"	anochrome	1 polybag	8400P14
14"	anochrome	10	8400B14
16"	anochrome	1 polybag	8400P16
16"	anochrome	10	8400B16
18"	anochrome	1 polybag	8400P18
18"	anochrome	10	8400B18
20"	anochrome	1 polybag	8400P20
22"	anochrome	10	8400B22
22"	anochrome	1 polybag	8400P22
24"	anochrome	10	8400B24
24"	anochrome	1 polybag	8400P24
26"	anochrome	10	8400B26
26"	anochrome	1 polybag	8400P26
28"	anochrome	10	8400B28
28"	anochrome	1 polybag	8400P28

KV 8405

size	finish	box qty	item no.
10"	anochrome	10	8405B10
12"	anochrome	10	8405B12
14"	anochrome	10	8405B14
16"	anochrome	10	8405B16
18"	anochrome	10	8405B18
20"	anochrome	10	8405B20
22"	anochrome	10	8405B22
24"	anochrome	10	8405B24
26"	anochrome	10	8405B26
28"	anochrome	10	8405B28

KV 8450FM/8455FM SOFT CLOSE DRAWER SLIDES



- 8450: Soft-close, full extension, 100 lb load rating
- 8455: Soft-close, 1" overtravel, 90 lb load rating
- Non-handed design
- Effortless opening with Force Management™ rack and gear system
- Integrated soft-close mechanism
- 32mm hole pattern with direct access mounting
- Lever disconnect for easy drawer removal
- Telescopic movement on steel ball bearings
- Height: 1-13/16"
- Clearance: 1/2" +1/32"-0" each side

KV 8450FM

size	finish	box qty	item no.
12"	anochrome	10	8450FMB12
14"	anochrome	10	8450FMB14
16"	anochrome	10	8450FMB16
18"	anochrome	10	8450FMB18
20"	anochrome	10	8450FMB20
22"	anochrome	10	8450FMB22
24"	anochrome	10	8450FMB24
26"	anochrome	10	8450FMB26
28"	anochrome	10	8450FMB28

KV 8455FM

size	finish	box qty	item no.
16"	anochrome	10	8455FMB16
18"	anochrome	10	8455FMB18
20"	anochrome	10	8455FMB20
22"	anochrome	10	8455FMB22
24"	anochrome	10	8455FMB24
26"	anochrome	10	8455FMB26

KV 8505 HEAVY-DUTY DRAWER SLIDES



- 1-1/2" Overtravel
- Non-handed quick disconnect drawer members
- Side mounting
- 32mm hole pattern
- Progressive movement on ball bearings
- Hold-in feature to prevent bounce back
- 150 lb load rating
- Height: 3-51/64"
- Clearance: 1/2" +1/32"-0" each side

size	finish	box qty	item no.
12"	anochrome	1 polybag	8505P12
12"	anochrome	5	8505B12
14"	anochrome	1 polybag	8505P14
14"	anochrome	5	8505B14
16"	anochrome	1 polybag	8505P16
16"	anochrome	5	8505B16
18"	anochrome	1 polybag	8505P18
18"	anochrome	5	8505B18
20"	anochrome	1 polybag	8505P20
20"	anochrome	5	8505B20
22"	anochrome	1 polybag	8505P22
22"	anochrome	5	8505B22
24"	anochrome	1 polybag	8505P24
24"	anochrome	5	8505B24
26"	anochrome	1 polybag	8505P26
26"	anochrome	5	8505B26
28"	anochrome	1 polybag	8505P28
28"	anochrome	5	8505B28
30"	anochrome	1 polybag	8505P30

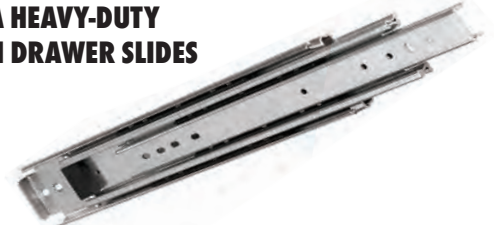
KV 8800 HEAVY-DUTY FULL EXTENSION DRAWER SLIDES



- Non-handed design for easy installation
- Non-disconnect
- Closed position hold-in detent
- Side mounting
- 200 lb load rating
- Height: 2.282"
- Clearance: 3/4" +.03"-0" each side

size	finish	box qty	item no.
14"	zinc	4	8800B14
18"	zinc	4	8800B18
28"	zinc	4	8800B28

KV 8900 EXTRA HEAVY-DUTY FULL EXTENSION DRAWER SLIDES



- Non-handed design for easy installation
- Non-disconnect
- Telescopic movement
- Heavy-duty ball bearings
- Side mounting
- 180 to 500 lb load rating (based on application)
- Height: 3" (±0.020)
- Clearance: 3/4" (±0.030)

size	finish	box qty	item no.
16"	anochrome	4	8900B16
18"	anochrome	4	8900B18
20"	anochrome	4	8900B20
22"	anochrome	3	8900B22
24"	anochrome	3	8900B24
26"	anochrome	3	8900B26
30"	anochrome	2	8900B30
32"	anochrome	2	8900B32
34"	anochrome	2	8900B34
40"	anochrome	1	8900B40
42"	anochrome	1	8900B42

KV 8080EZ PIVOT DOOR SLIDE



- Maximum dimensions: Horizontal pivot doors 24"H x 48"W, Vertical doors 42"H x 24"W
- Oversized "L-shaped" follower-strip mounting plate
- Attached hinge base, 3-way adjustable hinge
- Cushioned stops and door hold-out feature
- Ball bearing slide movement
- 3/4" extension slide packaged with self-close 35 mm hinge
- 30 lb load rating

size	finish	item no.
12"	anochrome	8080PEZ12
14"	anochrome	8080PEZ14
16"	anochrome	8080PEZ16
18"	anochrome	8080PEZ18
20"	anochrome	8080PEZ20
22"	anochrome	8080PEZ22
24"	anochrome	8080PEZ24

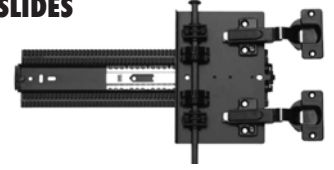
CLIP ON HINGE KITS FOR KV POCKET DOORS



- Use with 8082P, 8092P, and 8082Q
- 2 Hinges per kit

hinge cup	door thickness	finish	item no.
35mm	3/4"	nickel	8080HKEZS
35mm	3/4" free swing	nickel	8080HKEZF
35mm	3/4" free swing	ebony black	8080HKEZFEB
40mm	3/4"	ebony black	8080HKEZSEB
40mm	3/4" overlay	nickel	8080HKEZL
40mm	3/4" overlay	ebony black	8080HKEZLEB
40mm	1-1/4"	nickel	8086HKEZX

KV 8092 4X4 POCKET DOOR SLIDES



- Maximum dimensions: Horizontal pivot doors 24"H x 48"W, Vertical doors 42"H x 24"W
- Packaged with attached hinge base
- Rack and pinion design
- Greatly reduces door sag
- Requires partition installation
- 75 lb load rating

size	color	box qty	item no.
12"	black	1 pair	8092PEB12
14"	black	1 pair	8092PEB14
16"	black	1 pair	8092PEB16
18"	black	1 pair	8092PEB18
20"	black	1 pair	8092PEB20
22"	black	1 pair	8092PEB22
24"	black	1 pair	8092PEB24
26"	black	1 pair	8092PEB26
28"	black	1 pair	8092PEB28
30"	black	1 pair	8092SPEB30

PINION SHAFTS

size	color	box qty	item no.
36"	black	1 pair	8092SBEB36
48"	black	1 pair	8092SBEB48
72"	black	1 pair	8092SBEB72

KV 8090PCR RAISED PANEL CASSETTE ROLLER



- Rollers are placed on the side cabinet wall allowing the horizontal door rail to be cushioned as it recesses into the cabinet

item no.
8090PCR

KV 80 STANDARDS



- 1" center adjustment
- 5/8"W x 13/32"H
- 16 gauge steel construction

size	finish	box qty	item no.
12"	anochrome	10	80ANO12
18"	anochrome	10	80ANO18
24"	anochrome	10	80ANO24
36"	anochrome	10	80ANO36
48"	anochrome	10	80ANO48
60"	anochrome	10	80ANO60
72"	anochrome	10	80ANO72
84"	anochrome	10	80ANO84
96"	anochrome	10	80ANO96

KV 82 STANDARDS



- Double slotted
- 1" center adjustment
- 14 gauge steel construction

size	finish	box qty	item no.
28"	white	10	82WH28
39"	white	10	82WH39
48"	white	10	82WH48
63"	white	10	82WH63
78"	white	10	82WH78
94"	white	10	82WH94

KV 179 ADJUSTABLE SLANT BRACKETS



- Use with 1" adjustable standards
- Adjust to 15°, 30° and 45° and level

size	finish	box qty	item no.
12"	anochrome	10	179ANO12

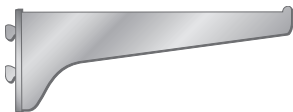
KV 182 BRACKETS



- Only to be used with 82 series standards
- All sizes feature two mounting holes in the bottom of each bracket to allow shelves to be fastened to brackets with screws

size	finish	box qty	item no.
5"	white	10	182WH5
7"	white	10	182WH7
9"	white	10	182WH9
10.5"	white	10	182WH105
12.5"	white	10	182WH125
14.5"	white	10	182WH145
18.5"	white	10	182WH185
24"	white	10	182WH24

KV 180 BRACKETS



- 1" center adjustment
- 5/8"W x 13/32"H
- 16 gauge steel construction

size	finish	box qty	item no.
4"	anochrome	10	180ANO4
6"	anochrome	10	180ANO6
8"	anochrome	10	180ANO8
10"	anochrome	10	180ANO10
12"	anochrome	10	180ANO12
14"	anochrome	10	180ANO14
16"	anochrome	10	180ANO16
18"	anochrome	10	180ANO18
20"	anochrome	10	180ANO20
8"	anochrome	25	180BPANO8
10"	anochrome	25	180BPANO10
12"	anochrome	25	180BPANO12
14"	anochrome	25	180BPANO14
16"	anochrome	25	180BPANO16
18"	anochrome	25	180BPANO18

KV 85 DOUBLE SLOT STANDARDS



- 1" center adjustment
- 1-1/4"W x 1/2"H
- 16 gauge steel construction

size	finish	box qty	item no.
24"	anochrome	10	85ANO24
36"	anochrome	10	85ANO36
48"	anochrome	10	85ANO48
60"	anochrome	10	85ANO60
72"	anochrome	10	85ANO72
84"	anochrome	10	85ANO84
96"	anochrome	10	85ANO96

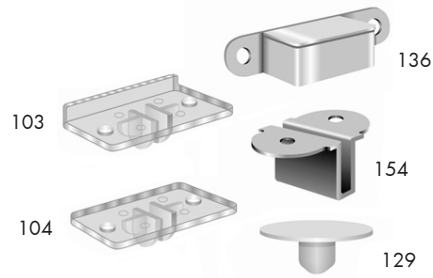
KV 185 DOUBLE SLOT BRACKETS



- 1" center adjustment
- Double bracket design
- Only to be used with 85 series standards

size	finish	box qty	item no.
8"	anochrome	10	185ANO8
10"	anochrome	10	185ANO10
12"	anochrome	10	185ANO12
14"	anochrome	10	185ANO14
16"	anochrome	10	185ANO16
18"	anochrome	10	185ANO18
20"	anochrome	10	185ANO20
22"	anochrome	10	185ANO22
24"	anochrome	10	185ANO24

STANDARD AND BRACKET ACCESSORIES 1" ADJUSTMENT



description	box qty	item no.
clear plastic front end rest	100	103PLAS
clear plastic back end rest	100	104PLAS
bottom socket #80 standard	100	136ANO
shelf fastener	100	154ANO
rubber cushion (use with plastic rests)	100	129RUB

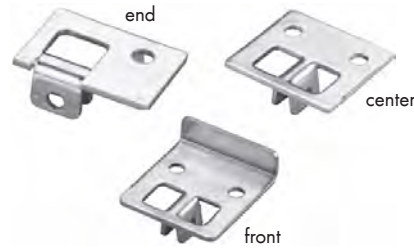
KV 87 STANDARDS



- 2" center adjustment
- 7/8"W x 1 1/16"D x selected length
- 12 gauge steel construction

size	finish	box qty	item no.
24"	anochrome	5	87ANO24
36"	anochrome	5	87ANO36
48"	anochrome	5	87ANO48
60"	anochrome	5	87ANO60
72"	anochrome	5	87ANO72
84"	anochrome	5	87ANO84
96"	anochrome	5	87ANO96

STANDARD AND BRACKET ACCESSORIES 2" ADJUSTMENT



- Use with the #186 and #187 brackets for anchoring shelf to bracket and for joining two shelves on a single bracket

type	finish	box qty	item no.
end rest	anochrome	100	210ANO
center rest	anochrome	100	211ANO
front rest	anochrome	100	212ANO

KV 186LL/187LL HEAVY-DUTY BRACKETS



- 2" center adjustment
- Only to be used with 87 series standards
- Heavy-duty 12 gauge steel construction
- With single nylon cam lever lock

size	finish	box qty	item no.
8"	anochrome	10	186LLANO8
10"	anochrome	10	186LLANO10
12"	anochrome	10	187LLANO12
14"	anochrome	10	187LLANO14
16"	anochrome	10	187LLANO16
18"	anochrome	10	187LLANO18
20"	anochrome	10	187LLANO20
22"	anochrome	10	187LLANO22
24"	anochrome	10	187LLANO24

KV 208 "ULTIMATE" L-BRACKETS



- Holds up to 1,000 lbs per pair when properly installed
- 5mm steel bar with a 3/4" wide support strut
- Corrosion resistant epoxy-coated finish

size	color	box qty	item no.
12"	white	10	208WH300
16"	white	10	208WH400
20"	white	10	208WH500
22"	white	10	208WH550

KV 233 STEEL STANDARDS



- Pilaster for built-in shelving and bookcase applications
- Adjustable on 1/2" centers
- 13/16"W x 3/16"D
- Standards not packed with nails
- 19 gauge steel

size	finish	box qty	item no.
84"	zinc	50	233ZC84

KV 255 STANDARDS



- Pilaster for built-in shelving and bookcase applications
- Adjustable on 1/2" centers
- 5/8"W x 3/16"D
- Standards not packed with nails
- 19 gauge steel construction
(* 17 gauge aluminum construction)

size	finish	box qty	item no.
48"	brass-look	100	255BR48
96"	brass-look	50	255BR96
96"	brown	50	255BRN96
24"	white	100	255WH24
30"	white	100	255WH30
36"	white	100	255WH36
72"	white	50	255WH72
96"	white	50	255WH96
12"	zinc	100	255ZC12
18"	zinc	100	255ZC18
24"	zinc	100	255ZC24
30"	zinc	100	255ZC30
36"	zinc	100	255ZC36
48"	zinc	100	255ZC48
60"	zinc	100	255ZC60
72"	zinc	50	255ZC72
84"	zinc	50	255ZC84
96"	zinc	50	255ZC96
12"	aluminum*	100	255AL12
18"	aluminum*	100	255AL18
24"	aluminum*	100	255AL24
30"	aluminum*	100	255AL30
36"	aluminum*	100	255AL36
48"	aluminum*	100	255AL48
60"	aluminum*	100	255AL60
72"	aluminum*	50	255AL72
84"	aluminum*	50	255AL84
96"	aluminum*	50	255AL96
96"	walnut*	50	255ALWH96

KV NAILS FOR 255 & 233 STANDARDS



finish	box qty	item no.
brass	650	25581NBR
bronze	650	25581NSTB
white	650	25581NWH
zinc	650	25581NZC

KV PILASTER SHELVING SUPPORTS



- For use with 233 standards only

finish	box qty	item no.
zinc	100	237ZC



- For use with 255 pilaster standards

color	box qty	item no.
white	100	256SWH
brass look	100	256BR
walnut	100	256WAL
zinc	100	256ZC
aluminum	100	256ALNAT
zinc	100	256R*

* With rubber cushion

1303 VERTICALLY ADJUSTABLE SIDE MOUNTING BRACKET



- Used with KV 255 and 233 pilaster strips
- Allows slide to be vertically adjusted
- 1-5/8" side clearance required
- Use 4 brackets/drawer slide set
- 35 lb load capacity

box qty	item no.
100	1303

INSERT GROMMETS



- 325: for 7.143mm (9/32") hole, 1/4" pin diameter
- 326: for 5.556mm (7/32") hole, 5mm pin diameter

finish	box qty	item no.
anochrome	1,000	325ANO
anochrome	1,000	326ANO

SHELF SUPPORT PINS



- Shelf supports for drilled holes

hole	finish	box qty	item no.
1/4"	anochrome	1,000	331ANO
1/4"	brass look	1,000	331BR
5mm	anochrome	1,000	332ANO
5mm	brass look	1,000	332BR

LOCKING SHELF SUPPORTS



- For 3/4" shelves
- 5mm pin diameter
- 1/4" pin length

color	box qty	item no.
white	100	339WH

SHELF SUPPORTS



- Shelf rest: 1/2" (13mm)W x 11/16" (17mm)L
- 5/16" (8mm) pin length

hole	finish	box qty	item no.
5mm	nickel-plated steel	100	345NP
5mm	brass look	100	345BR
1/4"	anochrome	100	346ANO
1/4"	brass look	100	346BR

KV FINGER PULLS



depth	finish	item no.
1/4"	nickel	801XNP
3/8"	nickel	803XNP
13/32"	anochrome	806ANO

DESKTOP FASTENER



- 12 gauge steel

box qty	item no.
100	1547STL

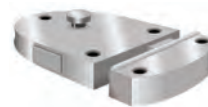
PLUNGER LOCK



- Mounting flange: 7/8" x 2" with screw holes on 1-1/2" centers
- Barrel: 7/8" outside diameter
- Plunger travel: 15/32"
- Plunger receptacle: 1/2" (O.D.) x 7/16"
- Keyed alike

finish	box qty	item no.
nickel	12	984KA90NP

SECRET GATE LATCH



- 2" x 2-3/8"
- Interchangeable left or right
- Hand mounting

finish	box qty	item no.
aluminum	12	989ALUM

EXTENSION CLOSET ROD



- Dimensions: 1-1/2"D x 2-19/32"H x selected length

size	finish	item no.
30" - 48"	zinc	KV2ZC30

CLOTHING CARRIER



- Mounts under closet shelves
- Fits 10" shelf only

size	finish	item no.
10"	anochrome	KV1ANO10

JOINT FASTENERS



- Maintains a firm, solid joint without glue
- Flat bar plates 7/16" x 3/16" x 1"
- Zinc finish

size	box qty	item no.
4" bolt	100	513ZC
3.5" bolt	100	517ZC

SD-1 KEYBOARD SUPPORT



- 20" slim profile keyboard platform
- Non-skid surface pads keep keyboard stationary
- Simple knob adjustment
- 9-3/4" overall height adjustment, 2-1/2" above work surface
- 360° swivel on EZ glide track
- ±15° tilt

item no.
SD1

SD-4 KEYBOARD SUPPORT



- 25" slim profile keyboard/mouse platform
- 25" gel palm rest
- One piece keyboard platform with dual mousing areas
- Simple knob adjustment
- 9-3/4" overall height adjustment, 2-1/2" above work surface
- 360° swivel on EZ glide track
- ±15° tilt

item no.
SD4

SD-2 KEYBOARD SUPPORT



- 20" slim profile keyboard platform
- 18" gel palm rest
- Non-skid surface pads keep keyboard stationary
- Simple knob adjustment
- 9-3/4" overall height adjustment, 2-1/2" above work surface
- 360° swivel on EZ glide track
- ±15° tilt

item no.
SD2

SD-10 KEYBOARD AND MOUSE



- Comfort plus trimline keyboard platform with 18" gel palm rest
- Rigid, lightweight design
- Non-skid surface pads keep keyboard stationary
- Tilt and swivel mouse platform
- Intuitive single paddle adjustment
- 9-3/4" overall height adjustment, 2-1/2" above work surface
- 360° swivel on EZ glide track
- ±15° tilt

item no.
SD10

SD-3 KEYBOARD AND MOUSE



- 20" slim profile keyboard platform
- 18" gel palm rest
- Non-skid surface pads keep keyboard stationary
- Over-swivel mouse platform
- Simple knob adjustment
- 9-3/4" overall height adjustment, 2-1/2" above work surface
- 360° swivel on EZ glide track
- ±15° tilt

item no.
SD3

SD-14 KEYBOARD SUPPORT



- 25" slim profile keyboard/mouse platform
- 25" gel palm rest
- One piece keyboard platform with dual mousing areas
- Intuitive single paddle adjustment
- 9-3/4" overall height adjustment, 2-1/2" above work surface
- 360° swivel on EZ glide track
- ±15° tilt

item no.
SD14

KD100/KD-10 KEYBOARD AND MOUSE SUPPORT



KD100



KD110

- 23" PVC cushion wrist rest wraps around front edges of the drawer
- KD110 has ambidextrous swivel 8" mousing surface with wire management
- Brackets mount in outboard position under work surface for application widths of 23" or greater, and in the inboard position for widths less than 20.75"
- Precision ball bearing slide assembly with lockout
- 75 lb load rating
- 7 position height adjustable from 2.25" to 3.6"

type	item no.
keyboard drawer	KD100
keyboard drawer and mouse	KD110

KV 5710 KEYBOARD AND MOUSE TRAY



- Integral adjustable wrist rest
- Adjustable drop height
- Friction latch in open position
- Mouse tray opens to either left or right side
- Brackets mount in outboard position under work surface for application widths 24" or greater, and in the inboard position for widths less than 24"
- 75 lb load rating
- 5700: 7 position height adjustable from 2-11/16" to 3-11/16"
- 5710: 7 position height adjustable from 2-19/32" to 4-1/4"

item no.
5700BLK18
5710BLK18

MOUSE PLATFORM SWIVEL



item no.
AMS

KD-1020 TRAYS



- 28.75" Lycra Gel/PVC cushioned wrist rest wraps around front edges of drawer
- Integral ambidextrous mousing surface inside the tray
- Injection molded 25" x 5" accessory tray with extended slides
- Brackets mount in outboard position under work surface for application widths 29" or greater, and in the inboard position for widths less than 26.75"
- 75 lb load rating
- 7 position height adjustable from 2.25" to 3.6"

item no.
KD1020

ATLANTA GA

5075 North Buford Hwy
Suite 100
Norcross, GA 30071
678.924.0386
888.924.0386
FAX 678.924.0391

CHATTANOOGA TN

234 Direct Connection Drive
Rossville, GA 30741
706.891.2000
800.506.9663
FAX 706.891.4229

RALEIGH NC

4213 Poole Road
Raleigh, NC 27610
919.231.6620
800.982.0999
FAX 919.231.9687

BALTIMORE MD

6660 Santa Barbara Road
Elkridge, MD 21075
410.796.7600
800.935.6229
FAX 410.796.7729

GREENSBORO NC

1819 Baker Road
High Point, NC 27263
336.431.2712
800.662.9060
FAX 336.431.2750

RICHMOND VA

1701 Rhoadmiller Street
Richmond, VA 23513
804.359.1374
800.552.4046
FAX 804.353.3206

CHARLESTON SC

4325 Lear Avenue
N. Charleston, SC 29418
843.529.0808
800.466.8499
FAX 843.529.0805

GREENVILLE SC

1441 Hwy 101 South
Greer, SC 29652
864.877.7328
800.868.9669
FAX 864.877.7413

ROANOKE VA

701 Gainsboro Road
Roanoke, VA 24016
540.344.2079
800.948.7156
FAX 540.344.2306

CHARLOTTE NC

4250 Golf Acres Drive
Charlotte NC 28208
704.394.9479
800.868.0291
FAX 704.398.2162

NORFOLK VA

3307 Chesapeake Blvd
Norfolk, VA 23513
757.855.3908
800.277.4254
FAX 757.857.6133

TAMPA FL

6211 N. Anderson Road
Tampa, FL 33634
800.432.1149
888.432.1149
FAX 813.887.1902