



The new printing paradigm

HP PageWide Managed Color E75160dn
HP PageWide Managed Color MFP E77600 series



Affordable color printing for every office



Minimal interruptions. Maximum uptime.



The world's most secure printing¹

Affordable color printing for every office



Color printing is within every business' budget with HP PageWide Technology. Print professional-quality color for a breakthrough low cost on sizes up to 12 x 18 inches (305 x 457 mm)—results you expect from HP for an exceptional value you can rely on.

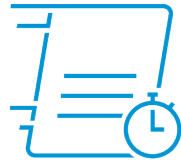


Breakthrough low-cost color

Depend on lasting value. Get the results you expect from HP PageWide Technology that delivers a game-changing low cost per color page.

Original HP PageWide cartridges provide the consistent printing performance, quality, and affordability businesses demand. Optional high-yield cartridges offer an even better value, so you can print more pages and replace cartridges less often.³

Add a touch of color to documents—without raising printing costs.⁴ Help your work stand out by including a small color logo or highlighted text for the same cost as a black-and-white page.



Fast performance, economical prints

Equip employees to speed through tasks with high-performance, professional-quality printing. Print even faster—and save even more per page—by setting your printer or MFP to General Office mode.⁵ Get the quality your business needs while helping to reduce printing costs.

Minimize interruptions in productivity with an HP PageWide Enterprise device designed with the fewest parts in its class for the least maintenance.⁶



Best-in-class energy efficiency²

Help keep energy costs down with the most efficient device in its class.² HP PageWide Technology conserves resources without compromising performance.

This device meets rigorous standards for ISO class 5 cleanrooms—perfect for sensitive environments. Keep noise to a minimum with a device designed to be quiet. Place it near people without disrupting work.

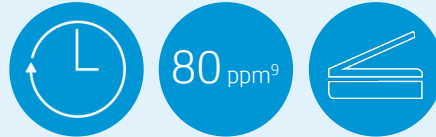
Help reduce your environmental impact. Consume up to 50% less paper, with automatic two-sided printing. Easily recycle your Original HP cartridges at no charge through HP Planet Partners.⁷

Minimal interruptions. Maximum uptime.

Annoying interruptions and complex maintenance can slow down printing and, ultimately, the pace of business. Avoid pauses in productivity with an HP PageWide device designed for maximum uptime—so you can count on reliable results day in and day out.

Move business forward

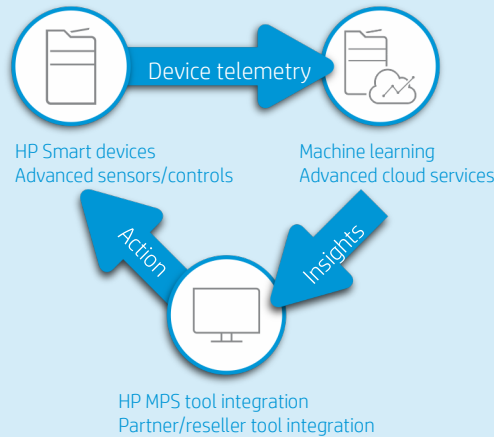
Print up to 50% faster than the competition⁸—as fast as 80 pages per minute (ppm) (E75160dn printer and E77660 MFP series).⁹ These devices wake up and print fast, so your pages are ready right when you need them. Preview and edit scans, adjust images, and launch print, scan, copy, and fax jobs¹⁰—all at the 9.0-inch (22.8 cm) functional touchscreen with 8.0-inch (20.3 cm) Color Graphics Display (MFP models).¹¹ For more information, see Appendix A on page 24.



With the E77600 MFP series, accelerate workflow with single-pass, two-sided scanning up to 120 images per minute (ipm), simplex, and up to 240 ipm, duplex (Flow models).¹² Scan documents directly to Microsoft® Office 365® and SharePoint®, plus email, USB, and network folders.¹³

Maximize uptime

HP Smart Device Services (SDS) help keep business moving by avoiding lapses in productivity. Reduce time spent calling and waiting, with technology that allows your service provider to quickly pinpoint issues before they become a problem. Remote diagnostic tools help provide faster, more efficient fixes. Simple issues can be resolved remotely, and service calls go faster when techs know exactly what they need for the right fix.



HP devices communicate their health and call your service provider for help when they need it. Empower advanced analytics with smart sensors, event logs, device telemetry, and access for remote configurations and adjustments that let your service provider know how devices are working.

Expand your capacity

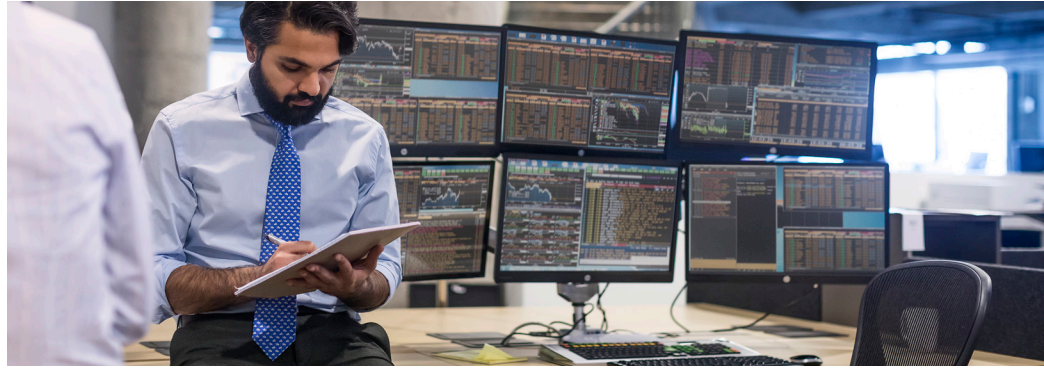
Tailor this device to the needs of your business with a wide range of paper-handling accessories. Optional trays support media sizes up to 12 x 18 inches (305 x 457 mm), including a 550-sheet paper tray, 550-sheet paper tray and stand, and 3x550-sheet paper tray and stand.¹⁴ For details, see Paper-handling accessories on page 12.



With the dns models, organize, staple, and collate documents with inner finishing that helps you save time and look professional. With the z+ models, advanced external finishing helps you ramp up production.¹⁵

Print up to 5,200 pages without reloading paper, using the optional 4,000-sheet high-capacity input (HCI) tray and stand, with support for letter (A4) size.¹⁶

The world's most secure printing¹



Only HP Enterprise printers repair themselves from attacks in real time, with built-in security to help keep your network safe. Automatically monitor threats, detect intrusions, and validate operating software with security offered only by HP.¹



Always on guard

Only HP Enterprise printers offer built-in security features that are always on guard.¹

- With HP Sure Start, each device regularly checks its operating code and repairs itself from attempted hacks.
- Whitelisting checks firmware during startup to help ensure it's authentic, good code—digitally signed by HP.
- Run-time intrusion detection continually monitors activity to detect and stop attacks, then automatically reboots.
- HP Connection Inspector inspects outgoing network connections to stop suspicious requests like malware.

Thwart potential attacks by receiving instant notification of security issues, so immediate action can be taken. This device works with tools like Splunk, ArcSight, McAfee, and SIEMonster.



Take security to the next level

Help protect this device with more than 135/250 (printers/MFPs) embedded security features.¹⁷ Protect information in transit over the network and stored on the device—keys, passwords, certificates, and more. Store data on the 256-bit encrypted HP High-Performance Secure Hard Disk.

Easily develop, deploy, and integrate HP and third-party solutions with HP Open Extensibility Platform (OXP). Add features such as card readers and more through the Hardware Integration Pocket (HIP).¹⁸ Further safeguard data stored on the device, using the HP Trusted Platform Module.¹⁹



Centralize control to help build business efficiency

Centralize control of your printing environment with HP Web Jetadmin—and help build business efficiency.²⁰ Optional HP JetAdvantage Security Manager offers an effective, policy-based approach to help secure HP printing and imaging devices.²¹ Easily set security configuration policies and automatically validate settings for every HP printer and MFP in your fleet.

HP JetAdvantage Secure Print²² and HP Access Control (HPAC) help secure documents by requiring authentication to release print jobs. In addition, extend capabilities and easily customize with HPAC—integrate job accounting, manage rights, and establish quotas for things such as color use.²³ Save IT time and make printing easy for the entire enterprise by using a single driver for all HP devices.²⁴

▶ For more information

Fleet management

HP Web Jetadmin visit: hp.com/go/wia

Solution brief: <http://h20195.www2.hp.com/V2/GetPDF.aspx/4AA5-2718ENW.pdf>

Video: <http://hp.brightcovegallery.com/solutions/detail/video/4271055504001/>

HP Universal Print Driver visit: hp.com/go/upd

Solution brief: <http://h20195.www2.hp.com/V2/GetPDF.aspx/4AA2-4781ENW.pdf>

Security

HP JetAdvantage Security Solutions visit: hp.com/go/printsecurity

Solution brief: <http://h20195.www2.hp.com/V2/GetPDF.aspx/4AA3-1295ENW.pdf>

Video: <http://hp.brightcovegallery.com/products/detail/video/4270905124001/>

HP JetAdvantage Security Manager visit: hp.com/go/securitymanager

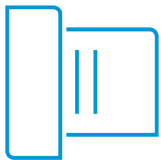
Brochure: <http://h20195.www2.hp.com/V2/GetPDF.aspx/4AA3-9275ENW.pdf>

Video: <http://hp.brightcovegallery.com/products/detail/video/4270837770001/>

Give workgroups the speed they need



Accelerate workflow, improve accuracy, and easily connect people throughout your organization with the E77600 MFP series models. Complete high-volume scan jobs super-fast—up to 240 ipm for Flow models¹²—and avoid extra steps with a device designed for maximum productivity.



Easily scan and edit text

Capture text from documents with high accuracy. Easily scan documents, edit text, and save as a Microsoft Word or searchable PDF file with HP Scan and I.R.I.S. Readiris™ Pro OCR Software.



Fast scanning and input

Turn stacks of paper documents into digital files. Load up to 200 pages into the automatic document feeder (ADF) for fast, unattended scanning.^{25,26}

Enter data more quickly and accurately using the pull-out keyboard, one of the features available on all Flow models.²⁷

Walk up and print from or scan to a memory device using the easy-access USB port.²⁸



Every page, every time

Capture every page easily—with confidence. HP EveryPage gives employees smooth paper-handling capabilities to detect potential errors or missed pages on the spot—for scan jobs of all kinds.²⁷

Help ensure every scanned document is properly oriented, cropped to size, and grayscale-optimized.

Flow MFP features²⁷



HP EveryPage featuring ultrasonic multi-feed detection



Faster scan speeds



Automatic page orientation, auto-crop, and auto-tone



Pull-out keyboard



Built-in OCR



Higher-capacity ADF

Get to know the HP PageWide Managed Color E75160dn printer



At a glance



Model (product number)	E75160dn (J7Z06A)
Functions	Print only
Print speeds (Professional/General Office mode), black and color, letter and A4⁹	Up to 60/80 ppm
Automatic two-sided printing	✓
Hardware Integration Pocket¹⁸	✓
Control panel display	4.3-inch (10.9 cm) pivoting color touchscreen
Paper-handling	For information on optional, standard, and required paper-handling compatibilities for this model, please see page 12.

HP PageWide Managed Color E75160dn printer – Configuration

Select one category of input accessory:



550-sheet Paper Tray (P1V16A)

- Select only one
- Media up to 11.7 x 17 inches
- Media weight: 16 to 58 lb



550-sheet Paper Tray and Stand (P1V17A)

- Select only one
- Media up to 11.7 x 17 inches
- Media weight: 16 to 58 lb



3x550-sheet Paper Tray and Stand (P1V18A)

- Select only one
- Media up to 11.7 x 17 inches
- Media weight: 16 to 58 lb



4,000-sheet HCI Paper Tray and Stand (P1V19A)

- Select only one
- Supports letter-size media
- Media weight: 16 to 58 lb



Standard on E75160dn:

100-sheet multipurpose tray 1

- Media up to 12 x 18 inches
- Media weight: 16 to 58 lb

550-sheet tray 2

- Media up to 11.7 x 17 inches
- Media weight: 16 to 58 lb

Get to know the HP PageWide Managed Color MFP E77650 series

HP PageWide Managed Color MFP E77650dns shown



Series at a glance



Model (product number)	MFP E77650dn (J7Z13A)	MFP E77650dns (Z5G79A)	Flow MFP E77650z (J7Z08A)	Flow MFP E77650zs (J7Z14A)	Flow MFP E77650z+ (Z5G76A) ²⁹
Functions	Print, scan, copy	Print, scan, copy	Print, scan, copy	Print, scan, copy	Print, scan, copy
Print speeds (Professional/General Office mode), black and color, letter and A4⁹	Up to 50/70 ppm	Up to 50/70 ppm	Up to 50/70 ppm	Up to 50/70 ppm	Up to 50/70 ppm
Advanced workflow features including pull-out keyboard and HP EveryPage	Not available	Not available	✓	✓	✓
Automatic page orientation, cropping, and tone adjustment	Not available	Not available	✓	✓	✓
Control panel display	9.0-inch (22.8 cm) functional touchscreen with 8.0-inch (20.3 cm) Color Graphics Display (<i>all models</i>)				
Finishing options	Not available	Inner finisher (standard)	Not available	Inner finisher (standard)	External finisher (required)
Paper-handling	For information on optional, standard, and required paper-handling capabilities for each model, please see page 12.				

HP PageWide Managed Color MFP E77650 series – Configuration

Select one category of input accessory:

550-sheet Paper Tray (P1V16A)

- Select only one
- Media up to 11.7 x 17 inches
- Media weight: 16 to 58 lb

550-sheet Paper Tray and Stand (P1V17A)

- Select only one
- Media up to 11.7 x 17 inches
- Media weight: 16 to 58 lb

3x550-sheet Paper Tray and Stand (P1V18A)

- Select only one
- Media up to 11.7 x 17 inches
- Media weight: 16 to 58 lb

4,000-sheet HCI Paper Tray and Stand (P1V19A)

- Select only one
- Supports letter-size media
- Media weight: 16 to 58 lb

One of the above three tray/stand input accessories required for the E77650z+ model



Standard on all dn/z models (dn model shown):

- 200-sheet ADF
 - Single-pass, two-sided scanning
 - Up to 90/120 ppm (dn/z), simplex and up to 180/240 ipm (dn/z), duplex
- 100-sheet multipurpose tray 1
 - Media up to 12 x 18 inches
 - Media weight: 16 to 58 lb
- 550-sheet tray 2
 - Media up to 11.7 x 17 inches
 - Media weight: 16 to 58 lb



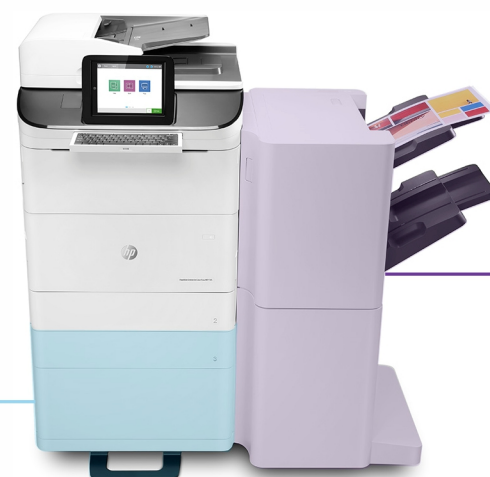
Standard on all dns/zs models (zs model shown):

- 200-sheet ADF
 - Single-pass, two-sided scanning
 - Up to 90/120 ppm (dns/zs), simplex and up to 180/240 ipm (dns/zs), duplex
- 350-sheet sheet inner finisher with stapler
 - staples up to 50 sheets
- 100-sheet multipurpose tray 1
 - Media up to 12 x 18 inches
 - Media weight: 16 to 58 lb
- 550-sheet tray 2
 - Media up to 11.7 x 17 inches
 - Media weight: 16 to 58 lb

Required output accessory for E77650z+ model:

3,250-sheet external finisher with stapler (Z4L04A)

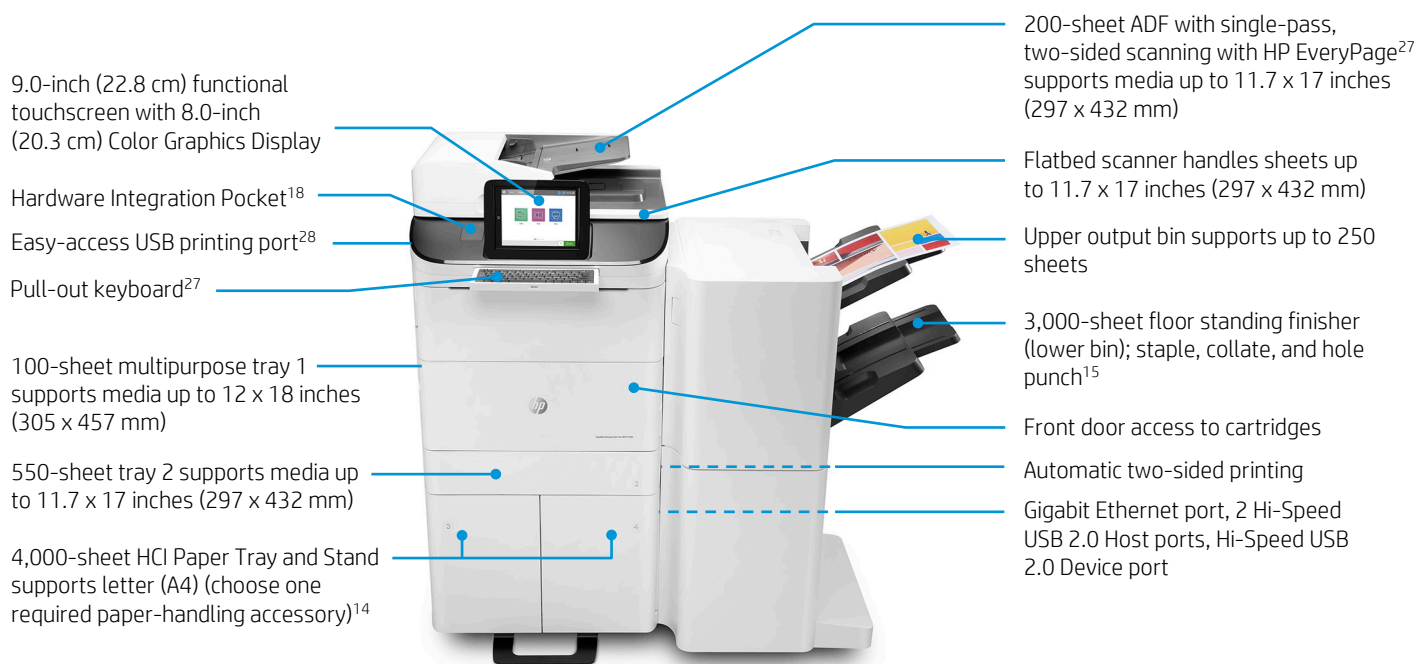
- Required purchase for the Flow MFP E77650z+ model
- Upper output bin supports up to 250 sheets
- Lower output bin supports up to 3,000-sheets and staples up to 50 sheets



Note: shading is for illustration purposes only

Get to know the HP PageWide Managed Color MFP E77660 series

HP PageWide Managed Color Flow MFP E77660z+ shown



Series at a glance



Model (product number)	MFP E77660dn (Z5G77A)	MFP E77660dns (2LF96A)	Flow MFP E77660z (J7Z03A)	Flow MFP E77660zs (J7Z07A)	Flow MFP E77660z+ (Z5G78A)
Functions	Print, scan, copy	Print, scan, copy	Print, scan, copy	Print, scan, copy	Print, scan, copy
Print speeds (Professional/General Office mode), black and color, letter and A4⁹	Up to 60/80 ppm	Up to 60/80 ppm	Up to 60/80 ppm	Up to 60/80 ppm	Up to 60/80 ppm
Advanced workflow features including pull-out keyboard and HP EveryPage	Not available	Not available	✓	✓	✓
Automatic page orientation, cropping, and tone adjustment	Not available	Not available	✓	✓	✓
Control panel display	9.0-inch (22.8 cm) functional touchscreen with 8.0-inch (20.3 cm) Color Graphics Display (<i>all models</i>)				
Finishing options	Not available	Inner finisher (standard)	Not available	Inner finisher (standard)	External finisher (required)
Paper-handling	For information on optional, standard, and required paper-handling capabilities for each model, please see page 12.				

HP PageWide Managed Color MFP E77660 series – Configuration

Select one category of input accessory:



550-sheet Paper Tray (P1V16A)

- Select only one
- Media up to 11.7 x 17 inches
- Media weight: 16 to 58 lb



550-sheet Paper Tray and Stand (P1V17A)

- Select only one
- Media up to 11.7 x 17 inches
- Media weight: 16 to 58 lb



3x550-sheet Paper Tray and Stand (P1V18A)

- Select only one
- Media up to 11.7 x 17 inches
- Media weight: 16 to 58 lb



4,000-sheet HCI Paper Tray and Stand (P1V19A)

- Select only one
- Supports letter-size media
- Media weight: 16 to 58 lb

One of the above three tray/stand input accessories required for the E77660z+ model



Standard on all dn/z models (z model shown):

- 200-sheet ADF
 - Single-pass, two-sided scanning
 - Up to 90/120 ppm (dn/z), simplex and up to 180/240 ipm (dn/z), duplex
- 100-sheet multipurpose tray 1
 - Media up to 12 x 18 inches
 - Media weight: 16 to 58 lb
- 550-sheet tray 2
 - Media up to 11.7 x 17 inches
 - Media weight: 16 to 58 lb




Standard on all dns/zs models (dns model shown):

- 200-sheet ADF
 - Single-pass, two-sided scanning
 - Up to 90/120 ppm (dns/zs), simplex and up to 180/240 ipm (dns/zs), duplex
- 350-sheet sheet inner finisher with stapler
 - staples up to 50 sheets
- 100-sheet multipurpose tray 1
 - Media up to 12 x 18 inches
 - Media weight: 16 to 58 lb
- Standard on dns/zs models only:
 - 550-sheet tray 2
 - Media up to 11.7 x 17 inches
 - Media weight: 16 to 58 lb



Required output accessory for E77660z+ model:



3,250-sheet external finisher with stapler (Z4L04A)

- Required purchase for the Flow MFP E77660z+ model
- Upper output bin supports up to 250 sheets
- Lower output bin supports up to 3,000-sheets and staples up to 50 sheets per set

Note: shading is for illustration purposes only

Paper-handling capabilities

The HP PageWide Managed Color E75160dn printer and MFP E77600 series models may be configured with optional input and output accessories described in the table below. Standard and required accessories are also noted in the table.

For the Flow MFP E77650z+/60z+ models, one of the following accessories must be added: 550-sheet paper tray and stand, 3x550-sheet paper tray and stand, or 4,000-sheet HCl paper tray and stand. For all other models, one of the following optional accessories can be added: 550-sheet paper tray, 550-sheet paper tray and stand, 3x550-sheet paper tray and stand, or 4,000-sheet HCl paper tray and stand. The 550-sheet trays support up to 11.7 x 17 inches (297 x 432 mm). The optional HCl tray supports letter (A4).

Other optional accessories, such as hole punch accessories, are included in the ordering information on page 23.



550-sheet Paper Tray (P1V16A)

550-sheet Paper Tray and Stand (P1V17A)

3x550-sheet Paper Tray and Stand (P1V18A)

4,000-sheet HCl Paper Tray and Stand (P1V19A)

350-sheet inner finisher with stapler

3,250-sheet external finisher with stapler (Z4L04A)

Supports up to 11.7 x 17 inches (297 x 432 mm)

Supports up to 11.7 x 17 inches (297 x 432 mm)

Supports up to 11.7 x 17 inches (297 x 432 mm)

Two 2,000-sheet trays that support letter (A4)

Staples up to 50 sheets

Staples up to 50 sheets

Not available: E77650z+ and E77660z+ models

Required: E77650z+ and E77660z+ models are required to add one of these input accessories (only one may be added at a time)

Optional: All other models may add one of these input accessories (only one may be added at a time)

Standard: dns models only; not supported on any other model

Required: E77650z+ and E77660z+ models; not supported on any other model

Maximum device input with accessory for all models except the Flow MFP E77650z+/60z+ models:¹⁶

1,200 sheets

1,200 sheets

2,300 sheets

4,650 sheets

Maximum device input with accessory for the Flow MFP E77650z+/60z+ models:¹⁶

Not applicable

1,200 sheets

2,300 sheets

4,650 sheets

Maximum device output with accessory:

850 sheets

3,250 sheets

HP PageWide Managed Color E75160dn technical specifications

HP PageWide Managed Color E75160dn	
Product number	J7Z06A
Functions	Print only
Control panel/data entry	4.3-inch (10.9 cm) pivoting color touchscreen; easy-access USB; ²⁸ Hardware Integration Pocket ¹⁸
Print speed (black and color, letter and A4)⁹	
Single-sided	Up to 60/80 ppm (Professional/General Office mode)
Two-sided	Up to 40/56 ipm (Professional/General Office mode)
First page out (Professional/General Office mode)	From ready (black): ³⁰ as fast as 6.5/5.0 seconds (letter); as fast as 6.4/5.2 seconds (A4) From ready (color): ³⁰ as fast as 6.5/5.2 seconds (letter); as fast as 6.6/5.3 seconds (A4) From sleep (black): ³¹ as fast as 14.9/14.0 seconds (letter); as fast as 15.0/13.6 seconds (A4) From sleep (color): ³¹ as fast as 15.0/13.7 seconds (letter); as fast as 14.8/14.3 seconds (A4)
Print resolution	Black: Up to 1200 x 1200 optimized dpi from 600 x 600 input dpi (on Unspecified, Plain, HP Premium Presentation Matte, and HP Brochure Matte); Color: Up to 2400 x 1200 optimized dpi from 600 x 600 input dpi (on HP Advanced Photo Papers)
Printing features	HP PageWide Technology with pigmented inks, HP EasyColor, print preview, automatic two-sided printing, print multiple pages per sheet (2, 4, 6, 9, 16), collation, booklet printing, cover pages, tray selection, scaling, portrait/landscape orientation, high-quality grayscale and black ink only, General Office/Professional/Presentation dpi print modes
Processor	1.2 GHz
Memory	1536 MB (standard); 2560 MB with optional DIMM (max) ³²
Storage	High-Performance Secure Hard Disk (AES 256 hardware encryption or greater; Secure erase capabilities: Secure File Erase-Temporary Job Files, Secure Erase-Job Data, Secure ATA Erase-Disk)
Durability ratings	
RMPV ³³	2,500 pages to as high as 50,000 pages
Duty cycle ³⁴	Up to 250,000 pages
Media specifications	
Input capacity	Up to 650 sheets (up to 4,650 sheets maximum ¹⁶) Tray 1: up to 100 sheets Tray 2: up to 550 sheets
Output capacity	Up to 500 sheets
Two-sided printing	Automatic
Media sizes	Tray 1: 12 x 18 in, 11 x 17 in, legal, oficio (8.5 x 13 in), letter, letter-R, executive, statement, 5 x 8 in, 5 x 7 in, 4 x 6 in, envelope #10; RA3, A3, 8K, B4, SRA4, RA4, A4, A4-R, 16K, 16K-R, A5, A5-R, B5 (JIS), A6, 8K (270 x 390 mm), 16K (195 x 270 mm), 8K (260 x 368 mm), 16K (184 x 260 mm), 8K (273 x 394 mm), 16K (197 x 273 mm), oficio 216 x 340 mm, envelopes (B5, C5, C6); Custom media sizes: 3.9 x 5.83 to 12 x 18 in (99.1 x 127 to 304.8 x 457.2 mm) Tray 2, optional 1x550-sheet tray, 1x550-sheet tray/stand, and 3x550-sheet tray/stand: 11 x 17 in, oficio (8.5 x 13 in), letter, letter-R, legal, executive; A3, A4, A4-R, A5, SRA4, B4, B5 (JIS), 8K (270 x 390 mm), 16K (195 x 270 mm), 8K (260 x 368 mm), 16K (184 x 260 mm), 8K (273 x 394 mm), 16K (197 x 273 mm), oficio (216 x 340 mm); Custom media sizes: 8.27 x 5.83 to 11.7 x 17 in (210.1 x 148.1 to 297.2 x 431.8 mm) Optional HCl trays 3 and 4: Letter and A4 only Duplex: 12 x 18 in, 11 x 17 in, legal, oficio (8.5 x 13 in), letter, letter-R, executive; 10 x 15 cm, RA3, A3, A4, 8K (260 x 368 mm), 8K (270 x 390 mm), 8K (273 x 394 mm), B4, SRA4, RA4, 16K (184 x 260 mm), 16K (195 x 270 mm), 16K (197 x 273 mm), A5, A5-R, B5 (JIS), B5 (JIS)-R, B6 (JIS), A6, Postcard (JIS), DPostcard (JIS), oficio (216 x 340 mm)
Media weights	Tray 1: 16 to 58 lb (60 to 220 g/m ²), 80 lb (300 g/m ²) photo paper only Tray 2, optional 1x550-sheet tray, 1x550-sheet tray/stand, 3x550-sheet tray/stand, and HCl trays 3 and 4: 16 to 58 lb (60 to 220 g/m ²)
Media types	Paper (plain, inkjet, inkjet brochure/glossy), photo paper, envelopes, labels, cards
Print languages	HP PCL 6, HP PCL 5c, HP postscript level 3 emulation; PDF 1.7
Fonts	105 internal TrueType fonts scalable in HP PCL, 92 internal scalable fonts in HP Postscript level 3 emulation (Euro symbol built-in); 1 internal Unicode font (Andale Mono WorldType); 2 Internal Windows Vista [®] 8 fonts (Calibri, Cambria); additional font solutions available via third-party flash memory cards; HP LaserJet fonts and IPDS Emulation available at hp.com/go/laserjetfonts
Connectivity	1 Hi-Speed Device USB 2.0; 2 Hi-Speed USB 2.0 Host; 1 Gigabit Ethernet 10/100/1000T network; 1 Hardware Integration Pocket ¹⁸

HP PageWide Managed Color E75160dn

Network capabilities	Standard: via HP Jetdirect Ethernet embedded print server supports: 10Base-T, 100Base-Tx, 1000Base-T; 802.3az (EEE) support on Fast Ethernet and Gigabit Ethernet; IPsec (standard) Optional: 802.11a/b/g/n wireless networking (with purchase of optional HP Jetdirect Z900nw Print Server) ³⁵
Mobile printing	Standard: HP Mobile Apps, HP ePrint, ³⁶ Mopria-certified, Apple® AirPrint®, ³⁷ Google Cloud Print™ 2.0 Optional: Wireless direct printing ³⁵ and NFC touch-to-print ³⁸ (with purchase of HP Jetdirect 3000w NFC/Wireless Accessory)
Security	Identity Management: Kerberos authentication, LDAP authentication, 1000 user PIN codes, optional HP and third-party advanced authentication solutions (e.g., badge readers) Network: IPsec/firewall with Certificate, Pre-Shared Key, and Kerberos authentication, Supports WJA-10 IPsec configuration Plug in, 802.1X authentication (EAP-PEAP, EAP-TLS), SNMPv3, HTTPS, Certificates, Access Control List, HP Trusted Platform Module (TPM) comes standard Data: Storage Encryption, Encrypted PDF and Email (uses FIPS 140 validated cryptographic libraries from Microsoft), Secure Erase, SSL/TLS (HTTPS), Encrypted Credentials Device: Security lock slot, USB port disablement, Hardware Integration Pocket for security solutions, ¹⁸ Intrusion Detection with Red Balloon Security Technology (constant in-device monitoring for attacks), HP Sure Start Secure Boot (BIOS integrity checking with self-healing capability), whitelisting (loads only known good code (DLLs, EXEs, etc.)), HP Connection Inspector (checks outgoing network connections to stop suspicious requests; may require a firmware update), HP Connection Inspector (checks outgoing network connections to stop suspicious requests; may require a firmware update) Security Management: Compatible with HP JetAdvantage Security Manager, ²¹ Device Security Syslog Messages processed and accessible in ArcSight, Splunk, McAfee, and SIEMonster SIEMs For more security settings go to http://h10032.www1.hp.com/ctq/Manual/c03602120
Printer management	HP JetAdvantage Security Manager; ²¹ HP SNMP Proxy Agent; HP Web Jetadmin Software; ²⁰ HP WS Pro Proxy Agent; Printer Administrator Resource Kit for HP Universal Print Driver ²⁴
Compatible operating systems³⁹	Windows® OS: Windows 10 all 32- and 64-bit editions (excluding RT OS for Tablets), Windows 7 all 32- and 64-bit editions, Windows 8/8.1 all 32- and 64-bit editions (excluding RT OS for Tablets), Windows Vista all 32-bit editions (Home Basic, Premium, Professional, etc.), Windows XP® SP3 32-bit editions (XP Home, XP Pro, etc.) Mac OS: 10.12 Sierra, OS X 10.10 Yosemite, OS X 10.11 El Capitan Mobile OS: Android™ Linux® Boss (5.0), Linux Debian (7.0, 7.1, 7.2, 7.3, 7.4, 7.5, 7.6, 7.7, 7.8, 7.9, 8.0, 8.1, 8.2, 8.3, 8.4, 8.5, 8.6), Linux Fedora (22, 23, 24), Linux Mint (17, 17.1, 17.2, 17.3, 18), Linux Red Hat Enterprise (6.0, 7.0), Linux SUSE (13.2, 42.1), Linux Ubuntu (12.04, 14.04, 15.10, 16.04, 16.10) Other OS: UNIX®
Compatible network operating systems	Citrix® MetaFrame Presentation Server 3.0, Citrix MetaFrame XP Presentation Server (Feature Release 1, 2, and 3), Citrix on Windows Server® 2003/2003R2, Citrix on Windows Server 2008/2008R2/2008 R2 SP1, Citrix on Windows Server 2012/2012R2, Citrix Presentation Server 4.0/4.5, Citrix XenApp 5.0 (plus Feature Pack 2 & 3) for Windows Server 2008 Terminal Services 32- and 64-bit, Citrix XenApp 6.0/6.5 (for Windows Server 2008 R2 Terminal Services, 32- and 64-bit), Citrix XenApp 6.0/6.5/7.5 (for Windows Server 2008 R2 SP1 Terminal Services, 32- and 64-bit), Citrix XenApp 7.5 (for Windows Server 2012 and 2012 R2 Terminal Services, 64-bit), Citrix XenDesktop® 5.6 (for Windows Server 2008 R2 Terminal Services, 32- and 64-bit), Citrix XenDesktop 5.6/7.0/7.5 (for Windows Server 2008 R2 SP1 Terminal Services, 32- and 64-bit), Citrix XenDesktop 7.0/7.5 (for Windows Server 2012 and 2012 R2 Terminal Services, 64-bit) Novell NetWare 6.5/SP8 Novell Clients novell.com/iprint , Novell iPrint Appliance v1.0, Novell Open Enterprise Server 11/SP1, Novell Open Enterprise Server 2 for Linux, Novell Servers novell.com/iprint Windows Server 2003/2003 R2 32-/64-bit (SP1/SP2) Standard/Enterprise/Datacenter (+ Cluster & Terminal Services), Windows Server 2003/2003 R2 32-bit (SP1/SP2), Standard/Enterprise (+ Cluster & Terminal Services), Windows Server 2008 32-/64-bit (SP2) Standard/Enterprise (+ Cluster & Terminal Services), Windows Server 2008 R2 64-bit (SP1) Standard/Enterprise (+ Cluster & Terminal Services), Windows Server 2008/2008 R2 32-/64-bit (SP1/SP2) Standard/Enterprise/Datacenter (+ Cluster & Terminal Services), Windows Server 2012/2012 R2 64-bit Standard/Foundation/Essentials/Datacenter (+ Cluster & Terminal Services), Windows Server 2016/ 64-bit Standard/Essential/Datacenter (+ Cluster & Terminal Services)
System requirements, Windows	A compatible operating system (see above); 2 GB available hard disk space; OS hardware requirements (see microsoft.com)
System requirements, Macintosh	A compatible operating system (see above); Internet; 1.3 GB available hard disk space; OS hardware requirements (see apple.com)
Dimensions (width x depth x height)	Operating: 32 x 23.25 x 18 in (813 x 591 x 458 mm) Maximum: ⁴⁰ 35.25 x 23.25 x 21 in (896 x 591 x 534 mm)
Weight (with print cartridges)	100.53 lb (45.6 kg)
What's in the box	HP PageWide Managed Color E75160dn; HP setup ink cartridges (yield after setup ~8,000 pages for CMY and ~10,000 pages for black); ⁴¹ Installation guide; Support flyer; documentation on CD-ROM; Power cord
Warranty	90 days parts only warranty; Warranty and support options vary by product, country, and local legal requirements. Go to hp.com/support to learn about HP world-class service and support options in your region.
Software included	HP Connected, HP Device Experience (DXP), HP PCL 6 Printer Driver, HP Software Installer/Uninstaller, Mac OS Welcome Screen (directs users to 123.HP.com or OS App Source for printer software), online user manuals

HP PageWide Managed Color E75160dn

Environmental and power

Temperatures ⁴²	Recommended operating: 63 to 77° F (17 to 25° C); Operating: 59 to 86° F (15 to 30° C); Storage before initial setup (Non-Purged): -40 to 140° F (-40 to 60° C); Storage after initial setup (Purged): 32 to 140° F (0 to 60° C)
Relative Humidity	Recommended operating range: 30 to 70% RH; Operating range: 10 to 80% RH; Non-operating range: 10 to 80% RH
Acoustics ⁴³	Acoustic power emissions: 6.9 B(A) (printing); acoustic pressure emissions: 55 dB(A) (printing)
Power ⁴⁴	Power supply type: Built-in power supply; Power requirements: Input voltage: 100 to 240 VAC, 50/60 Hz; Power Consumption: 660 watts (print/copy), 42 watts (ready), 1.6 watts (sleep), 0.2 watts (auto-off), 0.2 watts (off)
Energy-saving features	HP Auto-On/Auto-Off Technology ⁴⁵
Environmental specifications	ENERGY STAR® certified; EPEAT® Gold ⁴⁶
Typical Electricity Consumption (TEC)	1.330 kWh/week

HP PageWide Managed Color MFP E77650 series technical specifications

	HP PageWide Managed Color MFP E77650dn	HP PageWide Managed Color MFP E77650dns	HP PageWide Managed Color Flow MFP E77650z	HP PageWide Managed Color Flow MFP E77650zs	HP PageWide Managed Color Flow MFP E77650z+
Product number	J7Z13A	Z5G79A	J7Z08A	J7Z14A	Z5G76A ²⁹
Functions	Standard: Print, copy, scan; Optional: Fax (<i>all models</i>)				
Control panel/data entry	9.0-inch (22.8 cm) functional touchscreen with 8.0-inch (20.3 cm) Color Graphics Display; easy-access USB ²⁸ ; Hardware Integration Pocket ¹⁸				
	Plus: pull-out keyboard				
Print speed (black and color, letter and A4) ⁹					
Single-sided	Up to 50/70 ppm (Professional/General Office mode) (<i>all models</i>)				
Two-sided	Up to 35/49 ipm (Professional/General Office mode) (<i>all models</i>)				
First page out (black and color, letter and A4)	From ready: ³⁰ as fast as 7.1 seconds, Professional mode (<i>all models</i>) From sleep: ³¹ as fast as 17.4 seconds, Professional mode (<i>all models</i>)				
Print resolution	Black: Up to 1200 x 1200 optimized dpi from 600 x 600 input dpi (on Unspecified, Plain, HP Premium Presentation Matte, and HP Brochure Matte); Color: Up to 2400 x 1200 optimized dpi from 600 x 600 input dpi (on HP Advanced Photo Papers)				
Scanning resolution	Up to 600 dpi (<i>all models</i>)				
ADF scan speed (letter and A4) ¹²					
Single-sided	Up to 90 ppm (black and color)		Up to 120 ppm (black and color)		
Two-sided	Up to 180 ipm (black and color)		Up to 240 ipm (black and color)		
Features					
Printing	HP PageWide Technology with pigmented inks, HP EasyColor, print preview, automatic two-sided printing, print multiple pages per sheet (2, 4, 6, 9, 16), collation, booklet printing, cover pages, tray selection, scaling, portrait/landscape orientation, high-quality grayscale and black ink only, General Office/Professional/Presentation dpi print modes, control panel shortcuts, store print jobs; print from easy-access USB Microsoft Word and PowerPoint files				

	HP PageWide Managed Color MFP E77650dn	HP PageWide Managed Color MFP E77650dns	HP PageWide Managed Color Flow MFP E77650z	HP PageWide Managed Color Flow MFP E77650zs	HP PageWide Managed Color Flow MFP E77650z+
Scanning	Flatbed scanner: 11.7 x 17 in (297 x 432 mm); 200-sheet ADF with single-pass, two-sided scanning up to 11.7 x 39 in (297 x 1,000 mm); ²⁵ Advanced features: optimize text/picture, image adjustments, job build, output quality setting, selectable scan resolution 75 to 600 dpi, auto detect color, edge erase, job notification, blank page suppression, Quick Sets; bit depth: 24-bit (color); 8-bit (gray); Scan file type supported by software: Bitmap (.bmp), JPEG (.jpg), PDF (.pdf), PNG (.png), Rich Text (.rtf), Searchable PDF (.pdf), Text (.txt), TIFF (.tif); TWAIN version 2.1 ⁴⁷				
	Plus: HP EveryPage with ultrasonic multi-feed detection, embedded optical character recognition (OCR), auto-orientation, auto-crop-to-page, auto-tone				
Digital sending	Scan to email with LDAP email address lookup, scan to network folder, scan to USB, send to FTP, send to Internet fax, SMTP over SSL, blank page removal, edge erase, auto color sense, auto crop to content, compact PDF, scan to Microsoft SharePoint ⁴⁸				
	Plus: send to LAN fax; OCR, auto-tone, auto-orientation, multi-pick detect, auto-straighten, auto-crop-to-page				
File formats ⁴⁷	Digital Send: PDF, JPEG, TIFF, MTIFF, XPS, PDF/A; Scan to easy access USB: PDF, JPEG, TIFF, MTIFF, XPS, PDF/A; Print from easy access USB: PDF, PS, Print Ready files (.prn, .pcl, .cht)				
Copying	Copy speed: up to 50 copies per minute and first copy out as fast as 9.0 seconds; ⁴⁹ Auto scale, Reduce/Enlarge from scanner glass (25 to 400%), Collate, Auto-color detection, Two-sided copying, Job build, image adjustments (darkness, background clean-up, sharpness); Copy resolution: Up to 600 x 600 dpi				
Optional faxing	Fax speed: ⁵⁰ 3 seconds per page/33.6 kbps (letter/A4); fax forwarding, receive fax polling, broadcasting to up to 210 locations, speed dial up to 1000 numbers, each with 210 destinations, auto-fax reduction, auto-redialing, stored faxes, fax archiving, scale-to-fit, fax address book, LAN/Internet fax, fax number confirmation, holiday fax schedule Fax resolution: Black (standard): 204 x 98 dpi; Black (fine): 204 x 196 dpi; Black (photo grayscale): 300 x 300 dpi (400 x 400 dpi for received faxes only); Color (fine): 300 x 300 dpi (400 x 400 dpi for received faxes only)				
Processor	1.2 GHz (<i>all models</i>)				
Memory	3584 MB ⁵¹		5632 MB ⁵²		
Storage	High-Performance Secure Hard Disk (AES 256 hardware encryption or greater; Secure erase capabilities: Secure File Erase-Temporary Job Files, Secure Erase-Job Data, Secure ATA Erase-Disk)				
Durability ratings					
RMPV ³³	2,500 pages to as high as 40,000 pages (<i>all models</i>)				
RMSV ²⁶	2,000 pages to as high as 75,000 pages (<i>all models</i>)				
Duty cycle ³⁴	Up to 200,000 pages (<i>all models</i>)				
Media specifications					
Input capacity	Up to 650 sheets (up to 4,650 sheets maximum ¹⁶) (<i>all models</i>) Tray 1: up to 100 sheets Tray 2: up to 550 sheets				
Output capacity	Up to 500 sheets	Up to 850 sheets, including standard 350-sheet inner finisher with stapler (staples up to 50 sheets)	Up to 500 sheets	Up to 850 sheets, including standard 350-sheet inner finisher with stapler (staples up to 50 sheets)	Up to 3,250 sheets, with required external finisher (staples up to 50 sheets)
Two-sided printing	Automatic (<i>all models</i>)				
Media sizes	Tray 1: 12 x 18 in, 11 x 17 in, legal, oficio (8.5 x 13 in), letter, letter-R, executive, statement, 5 x 8 in, 5 x 7 in, 4 x 6 in, envelope #10; A3, A4, A4-R, A5, A5-R, A6, RA3, RA4, SRA4, B4, B5 (JIS), 8K (270 x 390 mm), 16K (195 x 270 mm), 8K (260 x 368 mm), 16K (184 x 260 mm), 8K (273 x 394 mm), 16K (197 x 273 mm), oficio (216 x 340 mm), envelopes (B5, C5, C6); Custom media sizes: 3.9 x 5.83 to 12 x 18 in (99.1 x 127 to 304.8 x 457.2 mm) Tray 2, optional 1x550-sheet tray, 1x550-sheet tray/stand, and 3x550-sheet tray/stand: 11 x 17 in, legal, oficio (8.5 x 13 in), letter, letter-R, executive; A3, A4, A4-R, A5, SRA4, B4, B5 (JIS), 8K (270 x 390 mm), 16K (195 x 270 mm), 8K (260 x 368 mm), 16K (184 x 260 mm), 8K (273 x 394 mm), 16K (197 x 273 mm), oficio (216 x 340 mm); Custom media sizes: 8.27 x 5.83 to 11.7 x 17 in (210.1 x 148.1 to 297.2 x 431.8 mm) Optional HCl trays 3 and 4: Letter and A4 only Duplex: 12 x 18 in, 11 x 17 in, legal, oficio (8.5 x 13 in), letter, letter-R, executive; A3, A4, A4-R, A5, A5-R, RA3, RA4, SRA4, B4, B5 (JIS), B6 (JIS), 10 x 15 cm, 8K (270 x 390 mm), 16K (195 x 270 mm), 8K (260 x 368 mm), 16K (184 x 260 mm), 8K (273 x 394 mm), 16K (197 x 273 mm), Postcard (JIS), DPostcard (JIS), oficio 216 x 340 mm ADF: 11.7 x 39 in, ledger, legal, 8.5 x 13 in, letter; A3, B4-JIS, A4, B5-JIS, A5, B6-JIS, A6				

	HP PageWide Managed Color MFP E77650dn	HP PageWide Managed Color MFP E77650dns	HP PageWide Managed Color Flow MFP E77650z	HP PageWide Managed Color Flow MFP E77650zs	HP PageWide Managed Color Flow MFP E77650z+
Media weights	Tray 1: 16 to 58 lb (60 to 220 g/m ²), 80 lb (300 g/m ²) photo paper only Tray 2, optional 1x550-sheet tray, 1x550-sheet tray/stand, 3x550-sheet tray/stand, and HCl trays 3 and 4: 16 to 58 lb (60 to 220 g/m ²) ADF: 12 to 53 lb (45 to 199 g/m ²)				
Media types	Paper (plain, inkjet, inkjet brochure/glossy), photo paper, envelopes, labels, cards				
Print languages	HP PCL 6, HP PCL 5c, HP postscript level 3 emulation, PDF 1.7				
Fonts	105 internal TrueType fonts scalable in HP PCL, 92 internal scalable fonts in HP Postscript level 3 emulation (Euro symbol built-in); 1 internal Unicode font (Andale Mono WorldType); 2 Internal Windows Vista 8 fonts (Calibri, Cambria); additional font solutions available via third-party flash memory cards; HP LaserJet fonts and IPDS Emulation available at hp.com/go/laserjetfonts				
Connectivity	1 Hi-Speed Device USB 2.0; 2 Hi-Speed USB 2.0 Host; 1 Gigabit Ethernet 10/100/1000T network; 1 Hardware Integration Pocket ¹⁸				
Mobile printing	Standard: HP Mobile apps, HP ePrint, ³⁶ Apple AirPrint ³⁷ , Mopria-certified, Google Cloud Print 2.0 (<i>all models</i>) Optional: Wireless direct printing ³⁵ and NFC touch-to-print ³⁸ (with purchase of HP Jetdirect 3000w NFC/Wireless Accessory)				
Network capabilities	Standard: via HP Jetdirect Ethernet embedded print server supports: 10Base-T, 100Base-Tx, 1000Base-T; 802.3az (EEE) support on Fast Ethernet and Gigabit Ethernet; IPsec Optional: 802.11a/b/g/n wireless networking (with purchase of optional HP Jetdirect 2900nw Print Server) ³⁵				
Network protocols	IPv4/IPv6: Apple Bonjour [®] Compatible (Mac OS v10.2.4 or higher), SNMPv1/v2c/v3, HTTP, HTTPS, FTP, TFTP, Port 9100, LPD, WS Discovery, IPP, Secure-IPP, IPsec/Firewall; IPv6: DHCPv6, MLDv1, ICMPv6; IPv4: Auto-IP, SLP, Telnet, IGMPv2, BOOTP/DHCP, WINS, IP Direct Mode, WS Print				
Security	Identity Management: Kerberos authentication, LDAP authentication, 1000 user PIN codes, optional HP and third-party advanced authentication solutions (e.g., badge readers) Network: IPsec/firewall with Certificate, Pre-Shared Key, and Kerberos authentication, Supports WJA-10 IPsec configuration Plug in, 802.1X authentication (EAP-PEAP, EAP-TLS), SNMPv3, HTTPS, Certificates, Access Control List, HP Trusted Platform Module (TPM) comes standard Data: Storage Encryption, Encrypted PDF and Email (uses FIPS 140 validated cryptographic libraries from Microsoft), Secure Erase, SSL/TLS (HTTPS), Encrypted Credentials Device: Security lock slot, USB port disablement, Hardware Integration Pocket for security solutions, ¹⁸ Intrusion Detection with Red Balloon Security Technology (constant in-device monitoring for attacks), HP Sure Start Secure Boot (BIOS integrity checking with self-healing capability), whitelisting (loads only known good code (DLLs, EXEs, etc.)), HP Connection Inspector (checks outgoing network connections to stop suspicious requests; may require a firmware update) Security Management: Compatible with HP JetAdvantage Security Manager, ²¹ Device Security Syslog Messages processed and accessible in ArcSight, Splunk, McAfee, and SIEMonster SIEMs For more security settings go to http://h10032.www1.hp.com/ctq/Manual/c03602120				
Printer management	HP JetAdvantage Security Manager, ²¹ HP SNMP Proxy Agent; HP Web Jetadmin Software; ²⁰ HP WS Pro Proxy Agent; Printer Administrator Resource Kit for HP Universal Print Driver ²⁴				
Compatible operating systems ³⁹	Windows OS: Windows 10 all 32- and 64-bit editions (excluding RT OS for Tablets), Windows 7 all 32- and 64-bit editions, Windows 8/8.1 all 32- and 64-bit editions (excluding RT OS for Tablets), Windows Vista all 32-bit editions (Home Basic, Premium, Professional, etc.), Windows XP SP3 32-bit editions (XP Home, XP Pro, etc.) Mac OS: 10.12 Sierra, OS X 10.10 Yosemite, OS X 10.11 El Capitan Mobile OS: Android Linux Boss (5.0), Linux Debian (7.0, 7.1, 7.2, 7.3, 7.4, 7.5, 7.6, 7.7, 7.8, 7.9, 8.0, 8.1, 8.2, 8.3, 8.4, 8.5, 8.6), Linux Fedora (22, 23, 24), Linux Mint (17, 17.1, 17.2, 17.3, 18), Linux Red Hat Enterprise (6.0, 7.0), Linux SUSE (13.2, 42.1), Linux Ubuntu (12.04, 14.04, 15.10, 16.04, 16.10) Other OS: UNIX				

	HP PageWide Managed Color MFP E77650dn	HP PageWide Managed Color MFP E77650dns	HP PageWide Managed Color Flow MFP E77650z	HP PageWide Managed Color Flow MFP E77650zs	HP PageWide Managed Color Flow MFP E77650z+
Compatible network operating systems	Citrix MetaFrame Presentation Server 3.0, Citrix MetaFrame XP Presentation Server (Feature Release 1, 2, and 3), Citrix on Windows Server 2003/2003R2, Citrix on Windows Server 2008/2008R2/2008 R2 SP1, Citrix on Windows Server 2012/2012R2, Citrix Presentation Server 4.0/4.5, Citrix XenApp 5.0 (plus Feature Pack 2 & 3) for Windows Server 2008 Terminal Services 32- and 64-bit, Citrix XenApp 6.0/6.5 (for Windows Server 2008 R2 Terminal Services, 32- and 64-bit), Citrix XenApp 6.0/6.5/7.5 (for Windows Server 2008 R2 SP1 Terminal Services, 32- and 64-bit), Citrix XenApp 7.5 (for Windows Server 2012 and 2012 R2 Terminal Services, 64-bit), Citrix XenDesktop 5.6 (for Windows Server 2008 R2 Terminal Services, 32- and 64-bit), Citrix XenDesktop 5.6/7.0/7.5 (for Windows Server 2008 R2 SP1 Terminal Services, 32- and 64-bit), Citrix XenDesktop 7.0/7.5 (for Windows Server 2012 and 2012 R2 Terminal Services, 64-bit) Novell NetWare 6.5/SP8 Novell Clients novell.com/iprint , Novell iPrint Appliance v1.0, Novell Open Enterprise Server 11/SP1, Novell Open Enterprise Server 2 for Linux, Novell Servers novell.com/iprint Windows Server 2003/2003 R2 32-/64-bit (SP1/SP2) Standard/Enterprise/Datacenter (+ Cluster & Terminal Services), Windows Server 2003/2003 R2 32-bit (SP1/SP2), Standard/Enterprise (+ Cluster & Terminal Services), Windows Server 2008 32-/64-bit (SP2) Standard/Enterprise (+ Cluster & Terminal Services), Windows Server 2008 R2 64-bit (SP1) Standard/Enterprise (+ Cluster & Terminal Services), Windows Server 2008/2008 R2 32-/64-bit (SP1/SP2) Standard/Enterprise/Datacenter (+ Cluster & Terminal Services), Windows Server 2012/2012 R2 64-bit Standard/Foundation/Essentials/Datacenter (+ Cluster & Terminal Services), Windows Server 2016/ 64-bit Standard/Essential/Datacenter (+ Cluster & Terminal Services)				
System requirements, Windows	A compatible operating system (see above); 2 GB available hard disk space; OS hardware requirements (see microsoft.com)				
System requirements, Macintosh	A compatible operating system (see above); Internet; 1.3 GB available hard disk space; OS hardware requirements (see apple.com)				
Dimensions (width x depth x height)	Operating: 32 x 24.25 x 26.75 in (813 x 616 x 680 mm) Maximum: ⁴⁰ 35.25 x 28.25 x 26.75 in (896 x 718 x 680 mm)	Operating: 32 x 24.25 x 31.125 in (813 x 616 x 791 mm) Maximum: ⁴⁰ 35.25 x 28.25 x 31.125 in (896 x 718 x 791 mm)	Operating: 32 x 24.25 x 26.75 in (813 x 616 x 680 mm) Maximum: ⁴⁰ 35.25 x 28.25 x 26.75 in (896 x 718 x 680 mm)	Operating: 32 x 24.25 x 31.125 in (813 x 616 x 791 mm) Maximum: ⁴⁰ 35.25 x 28.25 x 31.125 in (896 x 718 x 791 mm)	Operating: 49 x 27.3 x 48.1 in (1245 x 693 x 1222 mm) Maximum: ⁴⁰ 98.2 x 46.3 x 60.4 in (2,495 x 1,175 x 1,535 mm)
Weight (with print cartridges)	153 lb (69 kg)	181 lb (82 kg)	153 lb (69 kg)	181 lb (82 kg)	376.3 lb (171 kg)
What's in the box	HP PageWide Managed MFP; HP setup ink cartridges (yield after setup ~8,000 pages for CMY and ~10,000 pages for black ⁴¹); Installation guide, Support flyer; documentation on CD-ROM; Power cord				
Warranty	90-day parts only warranty; Warranty and support options vary by product, country, and local legal requirements. Go to hp.com/support to learn about HP world-class service and support options in your region.				
Software included⁴⁷	HP Connected, HP Device Experience (DXP), HP PCL 6 Printer Driver, HP Software Installer/Uninstaller, Mac OS Welcome Screen (directs users to 123.HP.com or OS App Source for printer software), online user manuals				
Environmental and power					
Temperatures ⁴²	Recommended operating: 63 to 77° F (17 to 25° C); Operating: 59 to 86° F (15 to 30° C); Storage before initial setup (Non-Purged): -40 to 140° F (-40 to 60° C); Storage after initial setup (Purged): 32 to 140° F (0 to 60° C)				
Relative Humidity	Recommended operating range: 30 to 70% RH; Operating range: 10 to 80% RH; Non-operating range: 10 to 80% RH				
Acoustic pressure emissions	Ready: Inaudible Print: 53 dB(A) ⁵³ Scan: 56 dB(A) ⁵⁴	Ready: Inaudible Print: 53 dB(A) ⁵³ Scan: 56 dB(A) ⁵⁴	Ready: Inaudible Print: 54 dB(A) ⁵⁵ Scan: 57 dB(A) ⁵⁶	Ready: Inaudible Print: 51 dB(A) ⁵³ Scan: 58 dB(A) ⁵⁶	Not available
Acoustic power emissions	Ready: Inaudible Print: 6.7 B(A) Scan: 7.1 B(A) ⁵⁴	Ready: Inaudible Print: 6.7 B(A) Scan: 7.1 B(A) ⁵⁴	Ready: Inaudible Print: 6.8 B(A) Scan: 7.2 B(A) ⁵⁶	Ready: Inaudible Print: 6.6 B(A) Scan: 7.2 B(A) ⁵⁶	Not available
Power ⁴⁴	Power supply type: Built-in power supply; Power requirements: Input voltage: 100 to 240 VAC, 50/60 Hz; Power Consumption: 660 watts (print/copy), 42 watts (ready), 1.6 watts (sleep), 0.2 watts (auto-off), 0.2 watts (off)				
Energy-saving features	HP Auto-On/Auto-Off Technology ⁴⁵ (<i>all models</i>)				
Environmental specifications	ENERGY STAR certified; EPEAT Gold ⁴⁶ (<i>all models</i>)				
Typical Electricity Consumption (TEC)	2.03 kWh/week	2.03 kWh/week	2.03 kWh/week	2.03 kWh/week	3.987 kWh/week

HP PageWide Managed Color MFP E77660 series technical specifications

	HP PageWide Managed Color MFP E77660dn	HP PageWide Managed Color MFP E77660dns	HP PageWide Managed Color Flow MFP E77660z	HP PageWide Managed Color Flow MFP E77660zs	HP PageWide Managed Color Flow MFP E77660z+
Product number	Z5G77A	2LF96A	J7Z03A	J7Z07A	Z5G78A
Functions	Standard: Print, copy, scan (<i>all models</i>) Optional: Fax (<i>all models</i>)				
Control panel/data entry	9.0-inch (22.8 cm) functional touchscreen with 8.0-inch (20.3 cm) Color Graphics Display; easy-access USB ²⁸ ; Hardware Integration Pocket ¹⁸				
	Plus: pull-out keyboard (<i>Flow models</i>)				
Print speed (black and color, letter and A4)⁹					
Single-sided	Up to 60/80 ppm (Professional/General Office mode) (<i>all models</i>)				
Two-sided	Up to 40/56 ipm (Professional/General Office mode) (<i>all models</i>)				
First page out (black and color, letter and A4)	From ready: ³⁰ as fast as 7.1 seconds (<i>all models</i>) From sleep: ³¹ as fast as 17.4 seconds (<i>all models</i>)				
Print resolution	Black: Up to 1200 x 1200 optimized dpi from 600 x 600 input dpi (on Unspecified, Plain, HP Premium Presentation Matte, and HP Brochure Matte); Color: Up to 2400 x 1200 optimized dpi from 600 x 600 input dpi (on HP Advanced Photo Papers)				
Scanning resolution	Up to 600 dpi (<i>all models</i>)				
ADF scan speed (letter and A4)¹²					
Single-sided	Up to 90 ppm (black and color)		Up to 120 ppm (black and color)		
Two-sided	Up to 180 ipm (black and color)		Up to 240 ipm (black and color)		
Features					
Printing	HP PageWide Technology with pigmented inks, HP EasyColor, print preview, automatic two-sided printing, print multiple pages per sheet (2, 4, 6, 9, 16), collation, booklet printing, cover pages, tray selection, scaling, portrait/landscape orientation, high-quality grayscale and black ink only, General Office/Professional/Presentation dpi print modes, control panel shortcuts, store print jobs; print from easy-access USB Microsoft Word and PowerPoint files				
Scanning	Flatbed scanner: 11.7 x 17 in (297 x 432 mm); 200-sheet ADF with single-pass, two-sided scanning up to 11.7 x 39 in (297 x 1,000 mm); ²⁵ Advanced features: optimize text/picture, image adjustments, job build, output quality setting, selectable scan resolution 75 to 600 dpi, auto detect color, edge erase, job notification, blank page suppression, Quick Sets; bit depth: 24-bit (color); 8-bit (gray); Scan file type supported by software: Bitmap (.bmp), JPEG (.jpg), PDF (.pdf), PNG (.png), Rich Text (.rtf), Searchable PDF (.pdf), Text (.txt), TIFF (.tif); TWAIN version 2.1 ⁴⁷				
	Plus: HP EveryPage with ultrasonic multi-feed detection, embedded optical character recognition (OCR), auto-orientation, auto-crop-to-page, auto-tone				
Digital sending	Scan to email with LDAP email address lookup, scan to network folder, scan to USB, send to FTP, send to Internet fax, send to LAN fax, SMTP over SSL, OCR, blank page removal, edge erase, auto color sense, auto crop to content, auto tone, auto-orientation, multi-pick detect, auto straighten, auto crop-to-page, compact PDF, scan to Microsoft SharePoint ⁴⁸				
File formats ⁴⁷	PDF, JPEG, TIFF, MTIFF, XPS, PDF/A; Scan to easy-access USB: PDF, JPEG, TIFF, MTIFF, XPS, PDF/A; Print from easy-access USB: PDF, PS, print ready files (.prn, .pcl, .cht)				
	Plus (OCR): TEXT, Unicode TEXT, RTF, Searchable PDF, Searchable PDF/A, HTML, CSV; Scan to easy-access USB: TEXT, Unicode TEXT, RTF, Searchable PDF, Searchable PDF/A, HTML, CSV				
Copying	Copy speed: up to 60 copies per minute and first copy out as fast as 7.9 seconds; ⁴⁹ Auto scale, Reduce/Enlarge from scanner glass (25 to 400%), Collate, Auto-color detection, Two-sided copying, Job build, image adjustments (darkness, background clean-up, sharpness); Copy resolution: Up to 600 x 600 dpi				
Optional faxing	Fax speed: ⁵⁰ 3 seconds per page/33.6 kbps (letter/A4); fax forwarding, receive fax polling, broadcasting to up to 210 locations, speed dial up to 1000 numbers, each with 210 destinations, auto-fax reduction, auto-redialing, stored faxes, fax archiving, scale-to-fit, fax address book, LAN/Internet fax, fax number confirmation, holiday fax schedule Fax resolution: Black (standard): 204 x 98 dpi; black (fine): 204 x 196 dpi; black (photo grayscale): 300 x 300 dpi (400 x 400 dpi for received faxes only); Color (fine): 300 x 300 dpi (400 x 400 dpi for received faxes only)				
Processor	1.2 GHz (<i>all models</i>)				
Memory	3584 MB ⁵¹		5632 MB ⁵²		

	HP PageWide Managed Color MFP E77660dn	HP PageWide Managed Color MFP E77660dns	HP PageWide Managed Color Flow MFP E77660z	HP PageWide Managed Color Flow MFP E77660zs	HP PageWide Managed Color Flow MFP E77660z+
Storage	High-Performance Secure Hard Disk (AES 256 hardware encryption or greater; Secure erase capabilities: Secure File Erase-Temporary Job Files, Secure Erase-Job Data, Secure ATA Erase-Disk)				
Durability ratings					
RMPV ³³	2,500 pages to as high as 50,000 pages (<i>all models</i>)				
RMSV ²⁶	2,000 pages to as high as 50,000 pages		2,000 pages to as high as 75,000 pages		
Duty cycle ³⁴	Up to 250,000 pages (<i>all models</i>)				
Media specifications					
Input capacity	Up to 650 sheets (up to 4,650 sheets maximum ¹⁶) Tray 1: up to 100 sheets Tray 2: up to 550 sheets				
Output capacity	Up to 500 sheets	Up to 850 sheets, including standard 350-sheet inner finisher with stapler (staples up to 50 sheets)	Up to 500 sheets	Up to 850 sheets, including standard 350-sheet inner finisher with stapler (staples up to 50 sheets)	Up to 3,250 sheets, with required external finisher (staples up to 50 sheets)
Two-sided printing	Automatic (<i>all models</i>)				
Media sizes	Tray 1: 12 x 18 in, 11 x 17 in, legal, oficio (8.5 x 13 in), letter, letter-R, executive, statement, 5 x 8 in, 5 x 7 in, 4 x 6 in, envelope #10; A3, A4, A4-R, A5, A5-R, A6, RA3, RA4, SRA4, B4, B5 (JIS), 8K (270 x 390 mm), 16K (195 x 270 mm), 8K (260 x 368 mm), 16K (184 x 260 mm), 8K (273 x 394 mm), 16K (197 x 273 mm), oficio (216 x 340 mm), envelopes (B5, C5, C6); Custom media sizes: 3.9 x 5.83 to 12 x 18 in (99.1 x 127 to 304.8 x 457.2 mm) Tray 2, optional 1x550-sheet tray, 1x550-sheet tray/stand, and 3x550-sheet tray/stand: 11 x 17 in, legal, oficio (8.5 x 13 in), letter, letter-R, executive; A3, A4, A4-R, A5, SRA4, B4, B5 (JIS), 8K (270 x 390 mm), 16K (195 x 270 mm), 8K (260 x 368 mm), 16K (184 x 260 mm), 8K (273 x 394 mm), 16K (197 x 273 mm), oficio (216 x 340 mm); Custom media sizes: 8.27 x 5.83 to 11.7 x 17 in (210.1 x 148.1 to 297.2 x 431.8 mm) Optional HCl trays 3 and 4: Letter and A4 only Duplex: 12 x 18 in, 11 x 17 in, legal, oficio (8.5 x 13 in), letter, letter-R, executive; A3, A4, A4-R, A5, A5-R, RA3, RA4, SRA4, B4, B5 (JIS), B6 (JIS), 10 x 15 cm, 8K (270 x 390 mm), 16K (195 x 270 mm), 8K (260 x 368 mm), 16K (184 x 260 mm), 8K (273 x 394 mm), 16K (197 x 273 mm), Postcard (JIS), DPostcard (JIS), oficio 216 x 340 mm ADF: 11.7 x 39 in, ledger, legal, 8.5 x 13 in, letter; A3, B4-JIS, A4, B5-JIS, A5, B6-JIS, A6				
Media weights	Tray 1: 16 to 58 lb (60 to 220 g/m ²), 80 lb (300 g/m ²) photo paper only Tray 2, optional 1x550-sheet tray, 1x550-sheet tray/stand, and 3x550-sheet tray/stand, optional HCl trays 3 and 4: 16 to 58 lb (60 to 220 g/m ²) ADF: 12 to 53 lb (45 to 199 g/m ²)				
Media types	Paper (plain, inkjet, inkjet brochure/glossy), photo paper, envelopes, labels, cards				
Print languages	HP PCL 6, HP PCL 5c, HP postscript level 3 emulation, PDF 1.7				
Fonts	105 internal TrueType fonts scalable in HP PCL, 92 internal scalable fonts in HP Postscript level 3 emulation (Euro symbol built-in); 1 internal Unicode font (Andale Mono WorldType); 2 Internal Windows Vista 8 fonts (Calibri, Cambria); additional font solutions available via third-party flash memory cards; HP LaserJet fonts and IPDS Emulation available at hp.com/go/laserjetfonts				
Connectivity	1 Hi-Speed Device USB 2.0; 2 Hi-Speed USB 2.0 Host (1 easy-access and 1 external accessible); 1 Gigabit Ethernet 10/100/1000T network; 1 Hardware Integration Pocket ¹⁸				
Mobile printing	HP ePrint, ³⁶ Apple AirPrint, ³⁷ Mopria-certified, Google Cloud Print 2.0 Optional: Wireless direct printing ³⁵ and NFC touch-to-print ³⁸ (with purchase of HP Jetdirect 3000w NFC/Wireless Accessory)				
Network capabilities	Standard: via HP Jetdirect Ethernet embedded print server supports: 10Base-T, 100Base-Tx, 1000Base-T; 802.3az (EEE) support on Fast Ethernet and Gigabit Ethernet; IPsec Optional: 802.11a/b/g/n wireless networking (with purchase of optional HP Jetdirect 2900nw Print Server) ³⁵				
Network protocols	IPv4/IPv6: Apple Bonjour Compatible (Mac OS v10.2.4 or higher), SNMPv1/v2c/v3, HTTP, HTTPS, FTP, TFTP, Port 9100, LPD, WS Discovery, IPP, Secure-IPP, IPsec/Firewall; IPv6: DHCPv6, MLDv1, ICMPv6; IPv4: Auto-IP, SLP, Telnet, IGMPv2, BOOTP/DHCP, WINS, IP Direct Mode, WS Print				

	HP PageWide Managed Color MFP E77660dn	HP PageWide Managed Color MFP E77660dns	HP PageWide Managed Color Flow MFP E77660z	HP PageWide Managed Color Flow MFP E77660zs	HP PageWide Managed Color Flow MFP E77660z+
Security	<p>Identity Management: Kerberos authentication, LDAP authentication, 1000 user PIN codes, optional HP and third-party advanced authentication solutions (e.g., badge readers)</p> <p>Network: IPsec/firewall with Certificate, Pre-Shared Key, and Kerberos authentication, Supports WJA-10 IPsec configuration Plug in, 802.1X authentication (EAP-PEAP, EAP-TLS), SNMPv3, HTTPS, Certificates, Access Control List, HP Trusted Platform Module (TPM) comes standard</p> <p>Data: Storage Encryption, Encrypted PDF and Email (uses FIPS 140 validated cryptographic libraries from Microsoft), Secure Erase, SSL/TLS (HTTPS), Encrypted Credentials</p> <p>Device: Security lock slot, USB port disablement, Hardware Integration Pocket for security solutions,¹⁸ Intrusion Detection with Red Balloon Security Technology (constant in-device monitoring for attacks), HP Sure Start Secure Boot (BIOS integrity checking with self-healing capability), whitelisting (loads only known good code (DLLs, EXEs, etc.)), HP Connection Inspector (checks outgoing network connections to stop suspicious requests; may require a firmware update)</p> <p>Security Management: Compatible with HP JetAdvantage Security Manager,²¹ Device Security Syslog Messages processed and accessible in ArcSight, Splunk, McAfee, and SIEMonster SIEMs</p> <p>For more security settings go to http://h10032.www1.hp.com/ctq/Manual/c03602120</p>				
Printer management	HP JetAdvantage Security Manager; ²¹ HP SNMP Proxy Agent; HP Web Jetadmin Software; ²⁰ HP WS Pro Proxy Agent; Printer Administrator Resource Kit for HP Universal Print Driver ²⁴				
Compatible operating systems³⁹	<p>Windows OS: Windows 10 all 32- and 64-bit editions (excluding RT OS for Tablets), Windows 7 all 32- and 64-bit editions, Windows 8/8.1 all 32- and 64-bit editions (excluding RT OS for Tablets), Windows Vista all 32-bit editions (Home Basic, Premium, Professional, etc.), Windows XP SP3 32-bit editions (XP Home, XP Pro, etc.)</p> <p>Mac OS: 10.12 Sierra, OS X 10.10 Yosemite, OS X 10.11 El Capitan</p> <p>Mobile OS: Android</p> <p>Linux Boss (5.0), Linux Debian (7.0, 7.1, 7.2, 7.3, 7.4, 7.5, 7.6, 7.7, 7.8, 7.9, 8.0, 8.1, 8.2, 8.3, 8.4, 8.5, 8.6), Linux Fedora (22, 23, 24), Linux Mint (17, 17.1, 17.2, 17.3, 18), Linux Red Hat Enterprise (6.0, 7.0), Linux SUSE (13.2, 42.1), Linux Ubuntu (12.04, 14.04, 15.10, 16.04, 16.10)</p> <p>Other OS: UNIX</p>				
Compatible network operating systems	<p>Citrix MetaFrame Presentation Server 3.0, Citrix MetaFrame XP Presentation Server (Feature Release 1, 2, and 3), Citrix on Windows Server 2003/2003R2, Citrix on Windows Server 2008/2008R2/2008 R2 SP1, Citrix on Windows Server 2012/2012R2, Citrix Presentation Server 4.0/4.5, Citrix XenApp 5.0 (plus Feature Pack 2 & 3) for Windows Server 2008 Terminal Services 32- and 64-bit, Citrix XenApp 6.0/6.5 (for Windows Server 2008 R2 Terminal Services, 32- and 64-bit), Citrix XenApp 6.0/6.5/7.5 (for Windows Server 2008 R2 SP1 Terminal Services, 32- and 64-bit), Citrix XenApp 7.5 (for Windows Server 2012 and 2012 R2 Terminal Services, 64-bit), Citrix XenDesktop 5.6 (for Windows Server 2008 R2 Terminal Services, 32- and 64-bit), Citrix XenDesktop 5.6/7.0/7.5 (for Windows Server 2008 R2 SP1 Terminal Services, 32- and 64-bit), Citrix XenDesktop 7.0/7.5 (for Windows Server 2012 and 2012 R2 Terminal Services, 64-bit)</p> <p>Novell NetWare 6.5/SP8 Novell Clients novell.com/iprint, Novell iPrint Appliance v1.0, Novell Open Enterprise Server 11/SP1, Novell Open Enterprise Server 2 for Linux, Novell Servers novell.com/iprint</p> <p>Windows Server 2003/2003 R2 32-/64-bit (SP1/SP2) Standard/Enterprise/Datacenter (+ Cluster & Terminal Services), Windows Server 2003/2003 R2 32-bit (SP1/SP2), Standard/Enterprise (+ Cluster & Terminal Services), Windows Server 2008 32-/64-bit (SP2) Standard/Enterprise (+ Cluster & Terminal Services), Windows Server 2008 R2 64-bit (SP1) Standard/Enterprise (+ Cluster & Terminal Services), Windows Server 2008/2008 R2 32-/64-bit (SP1/SP2) Standard/Enterprise/Datacenter (+ Cluster & Terminal Services), Windows Server 2012/2012 R2 64-bit Standard/Foundation/Essentials/Datacenter (+ Cluster & Terminal Services), Windows Server 2016/ 64-bit Standard/ Essential/Datacenter (+ Cluster & Terminal Services)</p>				
System requirements, Windows	A compatible operating system (see above); 2 GB available hard disk space; OS hardware requirements (see microsoft.com)				
System requirements, Macintosh	A compatible operating system (see above); Internet; 1.3 GB available hard disk space; OS hardware requirements (see apple.com)				
Dimensions (width x depth x height)	Operating: 32 x 24.25 x 26.75 in (813 x 616 x 680 mm) Maximum: ⁴⁰ 35.25 x 28.25 x 26.75 in (896 x 718 x 680 mm)	Operating: 32 x 24.25 x 31.125 in (813 x 616 x 791 mm) Maximum: ⁴⁰ 35.25 x 28.25 x 31.125 in (896 x 718 x 791 mm)	Operating: 32 x 24.25 x 26.75 in (813 x 616 x 680 mm) Maximum: ⁴⁰ 35.25 x 28.25 x 26.75 in (896 x 718 x 680 mm)	Operating: 32 x 24.25 x 31.125 in (813 x 616 x 791 mm) Maximum: ⁴⁰ 35.25 x 28.25 x 31.125 in (896 x 718 x 791 mm)	Operating: 49.0 x 27.3 x 48.1 in (1245 x 693 x 1222 mm) Maximum: ⁴⁰ 98.2 x 46.3 x 60.4 in (2,495 x 1,175 x 1,535 mm)
Weight (with print cartridges)	153 lb (69 kg)	181 lb (82 kg)	153 lb (69 kg)	181 lb (82 kg)	376.3 lb (171 kg)
What's in the box	HP PageWide Managed MFP; HP Setup Ink Cartridge (yield after setup ~8,000 pages CMY and ~10,000 black); ⁴¹ Installation guide; Support flyer; documentation on CD-ROM; Power cord				
Warranty	90-day parts only warranty; Warranty and support options vary by product, country, and local legal requirements. Go to hp.com/support to learn about HP world-class service and support options in your region.				
Software included⁴⁷	HP Connected, HP Device Experience (DXP), HP PCL 6 (XPS) Printer Driver, HP Software Installer/Uninstaller, Mac OS Welcome Screen (directs users to 123.HP.com or OS App Source for printer software), online user manuals				

	HP PageWide Managed Color MFP E77660dn	HP PageWide Managed Color MFP E77660dns	HP PageWide Managed Color Flow MFP E77660z	HP PageWide Managed Color Flow MFP E77660zs	HP PageWide Managed Color Flow MFP E77660z+
Environmental and power					
Temperatures ⁴²	Recommended operating: 63 to 77° F (17 to 25° C); Operating: 59 to 86° F (15 to 30° C); Storage before initial setup (Non-Purged): -40 to 140° F (-40 to 60° C); Storage after initial setup (Purged): 32 to 140° F (0 to 60° C)				
Relative Humidity	Recommended operating range: 30 to 70% RH; Operating range: 10 to 80% RH; Non-operating range: 10 to 80% RH				
Acoustic pressure emissions	Ready: Inaudible Print: 54 dB(A) ⁵⁷ Scan: 56 dB(A) ⁵⁴	Ready: Inaudible Print: 51 dB(A) ⁵⁷ Scan: Not available	Ready: Inaudible Print: 55 dB(A) ⁵⁷ Scan: 57 dB(A) ⁵⁶	Ready: Inaudible Print: 51 dB(A) ⁵⁷ Scan: 58 dB(A) ⁵⁶	Not available
Acoustic power emissions	Ready: Inaudible Print: 6.8 B(A) Scan: 7.1 B(A) ⁵⁴	Ready: Inaudible Print: Not available Scan: Not available	Ready: Inaudible Print: 6.8 B(A) Scan: 7.2 B(A) ⁵⁶	Ready: Inaudible Print: 6.6 B(A) Scan: 7.3 B(A) ⁵⁶	Not available
Power ⁴⁴	Power supply type: Built-in power supply; Power requirements: Input voltage: 100 to 240 VAC, 50/60 Hz; Power Consumption: 660 watts (print/copy), 42 watts (ready), 1.6 watts (sleep), 0.2 watts (auto-off), 0.2 watts (off)				
Energy-saving features	HP Auto-On/Auto-Off Technology ⁴⁵ (<i>all models</i>)				
Environmental specifications	ENERGY STAR certified; EPEAT Gold ⁴⁶ (<i>all models</i>)				
Typical Electricity Consumption (TEC)	2.03 kWh/week	2.03 kWh/week	2.03 kWh/week	2.03 kWh/week	4.296 kWh/week

Ordering information

Product	HP PageWide Managed Color E75160dn	J7Z06A
	HP PageWide Managed Color MFP E77650dn	J7Z13A
	HP PageWide Managed Color MFP E77650dns	Z5G79A
	HP PageWide Managed Color Flow MFP E77650z	J7Z08A
	HP PageWide Managed Color Flow MFP E77650zs	J7Z14A
	HP PageWide Managed Color MFP E77650z+ ²⁹	Z5G76A
	HP PageWide Managed Color MFP E77660dn	Z5G77A
	HP PageWide Managed Color MFP E77660dns	2LF96A
	HP PageWide Managed Color Flow MFP E77660z	J7Z03A
	HP PageWide Managed Color Flow MFP E77660zs	J7Z07A
HP PageWide Managed Color Flow MFP E77660z+	Z5G78A	
Supplies⁴¹	HP 990XC Black Contract PageWide Cartridge (~22,000 pages)	MOK28XC
	HP 990X Cyan Contract PageWide Cartridge (~16,000 pages)	MOK05XC
	HP 990X Magenta Contract PageWide Cartridge (~16,000 pages)	MOK09XC
	HP 990X Yellow Contract PageWide Cartridge (~16,000 pages)	MOK24XC
	HP 991XC Black Contract PageWide Cartridge (~22,000 pages)	MOK29XC
	HP 991X Cyan Contract PageWide Cartridge (~16,000 pages)	MOK06XC
	HP 991X Magenta Contract PageWide Cartridge (~16,000 pages)	MOK10XC
	HP 991X Yellow Contract PageWide Cartridge (~16,000 pages)	MOK25XC
	HP 992XC Black Contract PageWide Cartridge (~22,000 pages)	MOK30XC
	HP 992X Cyan Contract PageWide Cartridge (~16,000 pages)	MOK07XC
	HP 992X Magenta Contract PageWide Cartridge (~16,000 pages)	MOK11XC
	HP 992X Yellow Contract PageWide Cartridge (~16,000 pages)	MOK26XC
	HP 993XC Black Contract PageWide Cartridge (~22,000 pages)	MOK31XC
	HP 993X Cyan Contract PageWide Cartridge (~16,000 pages)	MOK08XC
	HP 993X Magenta Contract PageWide Cartridge (~16,000 pages)	MOK12XC
	HP 993X Yellow Contract PageWide Cartridge (~16,000 pages)	MOK27XC
	HP PageWide Printhead Wiper Kit (~150,000 pages)	W1B43A
	HP PageWide Service Fluid Container (~150,000 pages)	W1B44A
	HP PageWide Roller Kit (~150,000 pages)	W1B45A
	HP PageWide ADF Maintenance Kit (~150,000 pages)	J8J95A
	E77650dns/zs, E77660dns/zs models only:	
	HP Staple Cartridge Refill (5,000 staples)	J8J96A
	E776650/z+/60z+ models only:	
HP LaserJet Stapler/Stacker Finisher Staples	Y1G14A	
Accessories	HP PageWide Managed 550-sheet Paper Tray	P1V16A
	HP PageWide Managed 550-sheet Paper Tray and Stand	P1V17A
	HP PageWide Managed 3x550-sheet Paper Tray and Stand	P1V18A
	HP PageWide Managed 4000-sheet HCI Paper Tray and Stand	P1V19A
	HP High-Performance Secure Hard Disk	B5L29A
	HP 1 GB x32 144-Pin 800 MHz DDR3 SODIMM	E5K48A
	HP Foreign Interface Harness	B5L31A
	HP Jetdirect 2900nw Print Server ³⁵	J8O31A
	HP Jetdirect 3000w NFC/Wireless Accessory ³⁸	J8O30A
	HP LaserJet MFP Analog Fax Accessory 500	CC487A
	HP Internal USB ports	B5L28A
	E776650/z+/60z+ models only:	
	HP PageWide Stapler/Stacker External Finisher	Z4L04A
	HP LaserJet Hole Punch 2/3 Accessory	Y1G10A
	HP LaserJet Hole Punch 2/4 Accessory	Y1G11A
	HP LaserJet Hole Punch Swedish Accessory	Y1G12A
	Solutions	HP Web Jetadmin: hp.com/go/wja
HP Universal Print Driver: hp.com/go/upd		
HP JetAdvantage Security Manager: hp.com/go/securitymanager		
HP JetAdvantage On Demand Cloud Solutions: hp.com/go/jetadvantageondemand		
HP LaserJet fonts, barcodes, and IPDS Emulation available at hp.com/go/laserjetfonts To learn more about available infrastructure, management, and workflow solutions, visit hp.com/go/printing_solutions		

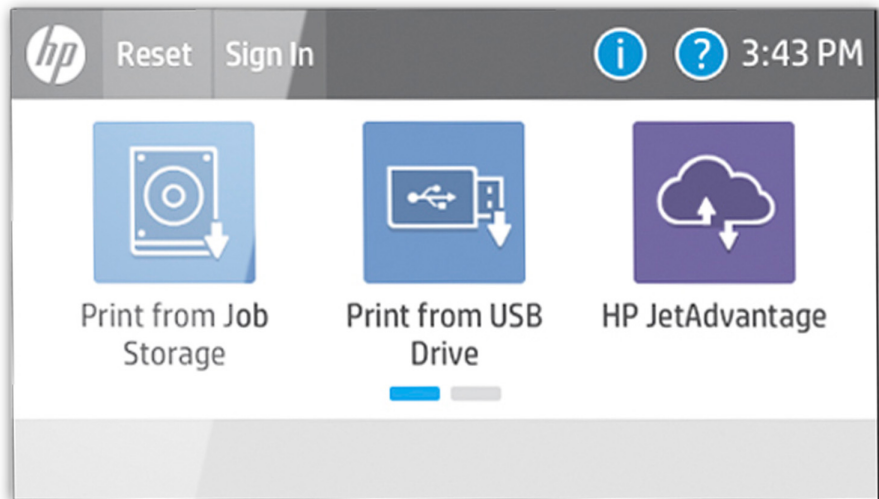
Appendix A: Control panel features



To access additional apps on the new printer user interface, simply swipe right to left

Upgrade to a modern interface

The HP PageWide Managed E-series is powered by HP FutureSmart 4.0 firmware. Its modern, tablet-like interface (9.0-inch (22.8 cm) functional touchscreen with 8.0-inch (20.3 cm) Color Graphics Display) on the MFPs, 4.3-inch (10.9 cm) on the printer) keeps things simple and intuitive across your fleet of Enterprise devices. A scalable control panel interface improves future extensibility and allows for customization, along with a robust set of new apps and usability features. You can even customize with your own wallpaper image and company logo. The new Message Center, with more detailed information and helpful animations, makes it easy to address device events. The simplified home screen displays just a few core apps by default. Additional apps are easily accessed by swiping right to left, like with a smartphone or tablet.

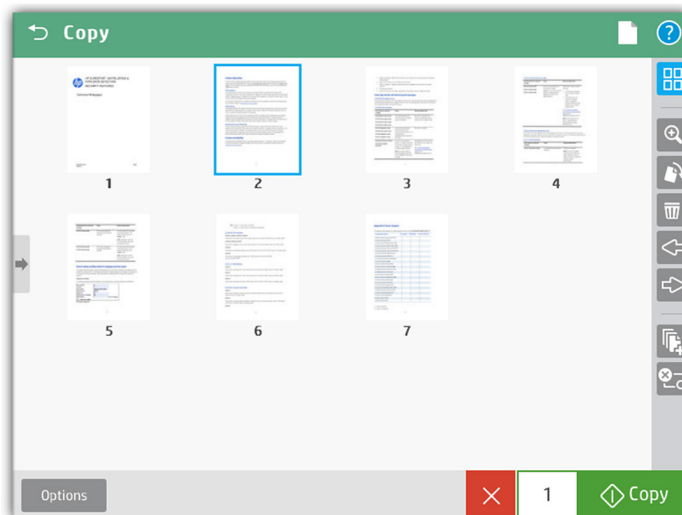


Edit jobs right at the MFP

The MFP control panel features an enhanced image preview—now for both copies and scans. Right from the MFP's 9.0-inch (22.8 cm) functional touchscreen with 8.0-inch (20.3 cm) Color Graphics Display, you can easily preview and edit scans before sending them. You can apply changes (like rotating) to a single page, or to multiple pages at once. Batch separation allows users to create separate PDF or PDF/A files from scanned pages. Flow models can also create PDF OCR and PDF/A OCR files.



The new MFP user interface enables **swipe**, **rotate**, and **drag-and-drop** capabilities



- Zoom
- Rotate pages
- Delete pages
- Change page order
- Add pages (job build)
- Cancel job

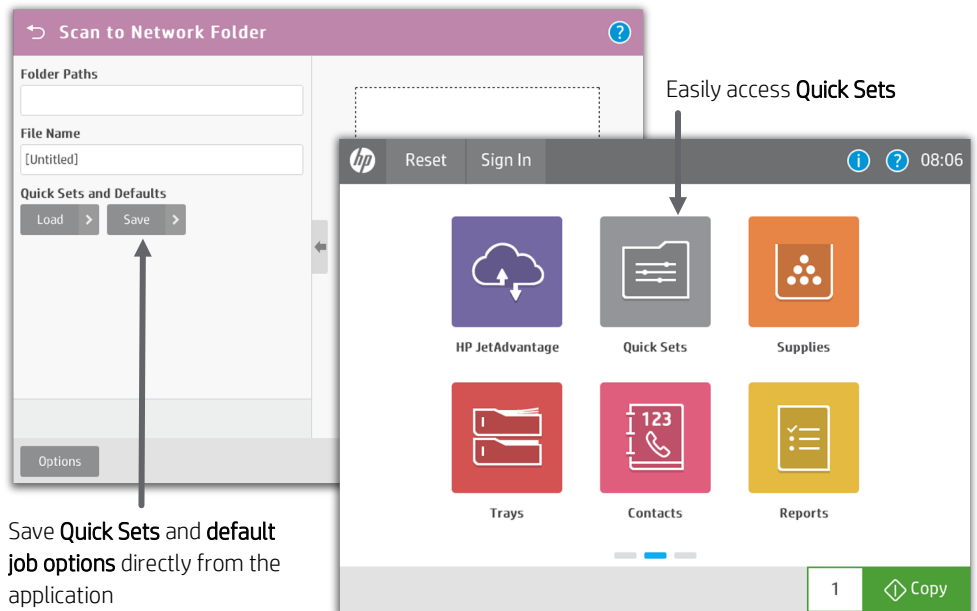
You can start a **preview** prior to committing to the copy job

Use Quick Sets to launch automated workflows

The digital sending capability on the E77650/E77660 MFP series models allows users to route documents to a variety of destinations like email recipients, network folders, fax, FTP, a USB device, or Microsoft SharePoint.

Quick Sets automate all of the steps of a complicated workflow and provide easy access to the configurations you use most, such as page size, resolution, and file format. You can also specify security settings, such as encrypted PDFs to be delivered through encrypted and signed emails.

Help users find what they need by moving individual Quick Sets to any screen or folder using the home screen customization feature. With Quick Sets, IT can promote or block access to certain device features. Calls to the helpdesk can be reduced when users have everything they need and are restricted from accessing settings they shouldn't tamper with.



Save **Quick Sets** and **default job options** directly from the application

Troubleshoot with ease

The HP PageWide Managed E-series can help save your IT department valuable time when it comes to troubleshooting problems. The Remote Control Panel allows users to operate the user interface remotely, so IT can troubleshoot problems without running to the printer or MFP.⁵⁸ Users can also quickly troubleshoot technical issues with HP's innovative, cloud-based Online Help services that are relevant and up to date. Easily solve problems from your PC or mobile device. A Quick Response (QR) code on the touchscreen links to Online Help using smart phones and tablets.⁵⁹ You can also find these links in the HP Embedded Web Server event log.



- ¹ HP's most advanced embedded security features are available on HP Enterprise-class devices with FutureSmart firmware 4.5 or above and is based on HP review of 2018 published embedded security features of competitive in-class printers. Only HP offers a combination of security features for integrity checking down to the BIOS with self-healing capabilities. For a list of compatible products, visit: hp.com/go/PrintersThatProtect. For more information, visit: hp.com/go/printersecurityclaims.
- ² Energy claim based on TEC data reported on energystar.gov as of February 2018. Data normalized to determine energy efficiency of in-class A3 color laser printers and MFPs with published speeds of 20 to 80 ppm, excluding other HP PageWide products. Subject to device settings. Actual results may vary.
- ³ High-yield cartridges are not included in printer purchase; purchase separately. Learn more at hp.com/go/learnaboutsupplies.
- ⁴ Available only as part of an HP Managed Print Services (MPS) contract. Feature applies to pages with the equivalent of an approximately ½ x ½-inch or 12.7 mm x 12.7 mm square of color coverage. For details, contact your HP MPS account manager.
- ⁵ Comparison based on printing in Professional Mode.
- ⁶ Fewer service parts claim based on HP analysis of leading in-class A3 color laser printers and MFPs as of February 2018; calculations use publicly available and/or published manufacturer rated yields for long-life consumables and assume 600,000 pages printed (using a 60% black/40% color ratio). Learn more at hp.com/go/pagewideclaims.
- ⁷ Program availability varies. For more information, visit hp.com/recycle.
- ⁸ Comparison of HP PageWide A3 devices with the majority of in-class color ink/laser MFPs (\$3,000-\$10,299 and €2,820-€10,199), and color ink/laser single function printers (\$1,500-\$4,299 and €1,410-€4,099) as of April 2018, excluding other HP PageWide products; competitive set based on market share data as reported by IDC as of Q4 2017, MSRP data provided by gap intelligence and/or Buyers Lab. HP PageWide speeds based on General Office mode and exclude first page. Learn more at hp.com/go/printerspeeds.
- ⁹ The HP PageWide Managed Color E75160dn and the HP PageWide Managed Color MFP E77660 series print up to 60/80 ppm, letter and A4, simplex (Professional mode/General Office mode). The HP PageWide Managed Color MFP E77650 series prints up to 50/70 ppm, letter and A4, simplex (Professional mode/General Office mode). ISO speeds measured using ISO/IEC 24734. Excludes first page or first set of ISO test pages. For details see hp.com/go/printerclaims.
- ¹⁰ Fax capability is optional on the HP PageWide Managed Color MFP E77650 and E77660 series models.
- ¹¹ The HP PageWide Managed Color MFP E77650 and E77660 series have an 9.0-inch (22.8 cm) functional touchscreen with 8.0-inch (20.3 cm) Color Graphics Display. The HP PageWide Managed Color E75160dn has a 4.3-inch (10.9 cm) touchscreen.
- ¹² Scan speeds measured from ADF. Actual processing speeds may vary depending on scan resolution, network conditions, computer performance, and application software.
- ¹³ Requires an Internet connection to the printer. Services may require registration. App availability varies by country, language, and agreements. For details, see hpconnected.com.
- ¹⁴ The E77650z+ and E77660z+ models are required to add one of the following accessories: 550 sheet Paper Tray and Cabinet, 3x550-sheet Paper Tray and Stand, 4,000-sheet HCl Paper Tray and Stand.
- ¹⁵ The 350-sheet inner finisher is available on the HP PageWide Managed Color MFP E77650dns, Flow MFP E77650zs, and Flow MFP E77660zs models only. Those models have a maximum output capacity of 850 sheets. The 3,250-sheet external finisher is a required accessory for the z+ models. The z+ models have a maximum output capacity of 3,250 sheets. Models without the inner or external finisher have a maximum output capacity of 500 sheets.
- ¹⁶ Purchase of optional paper tray required to reach maximum input capacity.
- ¹⁷ Some features require additional purchase. A FutureSmart service pack update may be required to activate security features. Learn more at hp.com/go/printsecurity.
- ¹⁸ Solutions deployed through the Hardware Integration Pocket (HIP) may require additional purchase. HP Proximity Card Reader (CZ208A) is available for separate purchase for select HP devices with Hardware Integration Pocket (HIP) and touchscreen display.
- ¹⁹ Use of the standard HP Trusted Platform Module accessory may require a firmware upgrade.
- ²⁰ HP Web Jetadmin is available for download at no additional charge at hp.com/go/wja.
- ²¹ HP JetAdvantage Security Manager must be purchased separately. For details, see hp.com/go/securitymanager.
- ²² HP JetAdvantage Secure Print works with any network-connected printer or MFP. On-device authentication is available for many HP LaserJet, PageWide, and OfficeJet Pro devices and selected non-HP devices. Some devices may require a firmware upgrade. Internet connection required for cloud storage and retrieval of print jobs. Print-job release from a mobile device requires a network connection and QR code. For more information and a list of supported printers and MFPs, see hp.com/go/JetAdvantageSecurePrint.
- ²³ Color access control capabilities vary from device to device.
- ²⁴ The HP Universal Print Driver is available for download at no additional charge at hp.com/go/upd.
- ²⁵ The 200-sheet ADF can scan documents up to 11.7 x 17 in (297 x 432 mm), as well as up to 11.7 x 39 in (297 x 1000 mm) when "long scan size" is selected.
- ²⁶ The HP PageWide Managed Color MFP E77650dn/dns and E77660dn/dns models have a recommended monthly scan volume (RMSV) of 2,000 to 50,000 pages. The HP PageWide Managed Color Flow MFP E77650z/zs/z+ and E77660z/zs/z+ models have an RMSV of 2,000 to 75,000 pages. HP recommends that the number of scanned pages per month be within the stated range for optimum device performance, based on factors including supplies replacement intervals and device life over an extended warranty period.
- ²⁷ The pull-out keyboard, HP EveryPage, ultrasonic detection, and embedded OCR are available with HP PageWide Managed Color Flow MFP E77650z/zs/z+ and E77660z/zs/z+ models only.
- ²⁸ An administrator must enable the easy-access USB port before use.
- ²⁹ The HP PageWide Managed Color Flow MFP E77650z+ is only offered in NA.
- ³⁰ Measured using ISO/IEC 17629. Exact speed for first page out varies depending on the system configuration, software application, driver, and document complexity. Learn more at hp.com/go/printerclaims.
- ³¹ Measured after 15 minutes in sleep. Exact speed varies depending on the system configuration, software application, driver, document complexity, and time in sleep.
- ³² Upgradeable to 2560 MB with optional DIMM.
- ³³ Recommended Monthly Page Volume: HP recommends that the number of printed pages per month be within the stated range for optimum device performance, based on factors including supplies replacement intervals and device life over an extended warranty period.
- ³⁴ Duty cycle is defined as the maximum number of pages per month of imaged output. HP recommends that the number of printed pages per month be within the stated range for optimum device performance, based on factors including supplies replacement intervals and device life over an extended warranty period.
- ³⁵ The HP PageWide Managed E-series models can add wireless networking with the purchase of the optional HP Jetdirect 2900nw Print Server. Wireless performance is dependent on physical environment and distance from access point and may be limited during active VPN connections.

-
- ³⁶ Printer requires ePrint account registration. App or software may be required. Wireless operations are compatible with 2.4 GHz operations only. Learn more at hp.com/go/mobileprinting.
- ³⁷ Supports the following devices running iOS 4.2 or later: iPad®, iPad 2, iPhone® (3GS or later), iPod touch® (3rd generation or later). Works with HP's AirPrint®-enabled printers and requires the printer be connected to the same network as your iOS device. Wireless performance is dependent on physical environment and distance from the access point.
- ³⁸ Touch-to-print capability is optional for all models with the purchase of the optional HP Jetdirect 3000w NFC/Wireless Direct Accessory. Mobile device must support Near Field Communication (NFC)-enabled printing. For more information, see hp.com/go/businessmobileprinting.
- ³⁹ Full solution software available only for Windows® 7 and newer, UPD software available only for Windows 7 and newer, HP Software for Mac and Windows is no longer included on the CD, but can be downloaded from 123.hp.com. Legacy Windows Operating Systems (XP, Vista, and equivalent servers) get print and scan drivers only with a reduced feature set, Windows RT OS for Tablets (32- and 64-bit) uses a simplified HP print driver built into the RT OS.
- ⁴⁰ Maximum dimensions of the device are measured with all paper trays folded out, document feeder lifted, and standard or required accessories installed.
- ⁴¹ Toner cartridge yields established using ISO/IEC test standards. Actual yields and costs vary considerably depending on images printed, number of color pages printed, and other factors.
- ⁴² If stored below the lowest specified operating temperature, unit must slowly warm up to an approved operating temperature (HP recommends waiting 24 hours at approved operating temperature prior to using the printer).
- ⁴³ Printing mono simplex A4 at 61 ppm (E75160dn). Acoustic values are subject to change. For current information, see hp.com/support.
- ⁴⁴ Power requirements are based on the country/region where the printer is sold. Do not convert operating voltages. This will damage the printer and void the product warranty. Power consumption values typically based on measurement of 115V device.
- ⁴⁵ HP Auto-On/Auto-Off Technology capabilities are subject to printer and settings.
- ⁴⁶ EPEAT® registered where applicable. EPEAT registration varies by country. See epeat.net for registration status by country.
- ⁴⁷ Scan software not included in box. HP Scan and TWAIN driver available for download: hp.com/support.
- ⁴⁸ An administrator must enable the Scan to SharePoint® feature before use.
- ⁴⁹ First copy out and copy speed measured using ISO/IEC 29183, excludes first set of test documents. For more information see hp.com/go/printerclaims. Exact speed varies depending on the system configuration, software application, driver, and document complexity.
- ⁵⁰ Based on standard ITU-T test image #1 at standard resolution and MMR encoding, the HP fax device can transmit at 3 sec/page for V.34 and 6 sec/page for V.17.
- ⁵¹ Future firmware updates may support 4608 MB by adding DIMM memory module.
- ⁵² Future firmware updates may support 6656 MB by adding DIMM memory module.
- ⁵³ Printing at 51 ppm.
- ⁵⁴ Scanning at 114 ppm with ADF running.
- ⁵⁵ Printing at 54 ppm.
- ⁵⁶ Scanning at 129 ppm with ADF running.
- ⁵⁷ Printing at 61 ppm.
- ⁵⁸ Availability dependent on firmware or software updates or upgrades.
- ⁵⁹ Online Help must be enabled on the printer or MFP. Mobile device must have an Internet connection to access online services.

© Copyright 2019 HP Development Company, L.P. The information contained herein is subject to change without notice. The only warranties for HP products and services are set forth in the express warranty statements accompanying such products and services. Nothing herein should be construed as constituting an additional warranty. HP shall not be liable for technical or editorial errors or omissions contained herein.

AirPrint, Apple, Bonjour, iPad, iPhone, and iPod touch are trademarks of Apple Inc. Android and Google Cloud Print are trademarks of Google Inc. Citrix and XenDesktop are registered trademarks of Citrix Systems, Inc. and/or one more of its subsidiaries, and may be registered in the United States Patent and Trademark Office and in other countries. ENERGY STAR is a registered trademark owned by the U.S. Environmental Protection Agency. Linux is the registered trademark of Linus Torvalds in the U.S. and other countries. Microsoft, Windows, Office 365, SharePoint, Windows Server, and Windows Vista are U.S. registered trademarks of the Microsoft group of companies. UNIX is a registered trademark of The Open Group.

