

peerless-AV[®]

Digital Signage
Collection



Exceeding your expectations with innovative solutions.

Peerless-AV[®] continues to be a pioneer and market leader in the digital signage arena. We consistently raise the bar, providing innovative, award-winning solutions for interactive displays, out-of-home advertising, in-store displays, POS solutions, and much more. We have creative, compelling solutions for just about any environment.

Our standard products encompass a wide range of digital signage solutions, from dvLED video wall mounting systems to integrated kiosks. As the industry leader in custom solutions for high volume projects, we offer true innovation and technical expertise, all housed within our state-of-the-art facility, to take projects from concept to successful completion. Our dedicated team ensures we're staying ahead of industry trends, providing you with innovative products backed by the Peerless-AV quality you trust.

COMPLETE LINE OF DIGITAL SIGNAGE SOLUTIONS



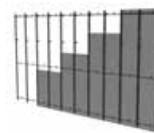
Outdoor Displays & Accessories
pg# 4-5



Outdoor Kiosks
pg# 6-7



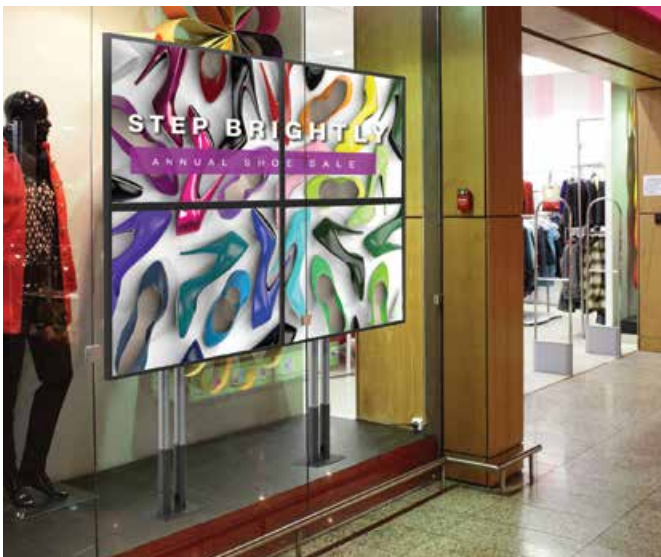
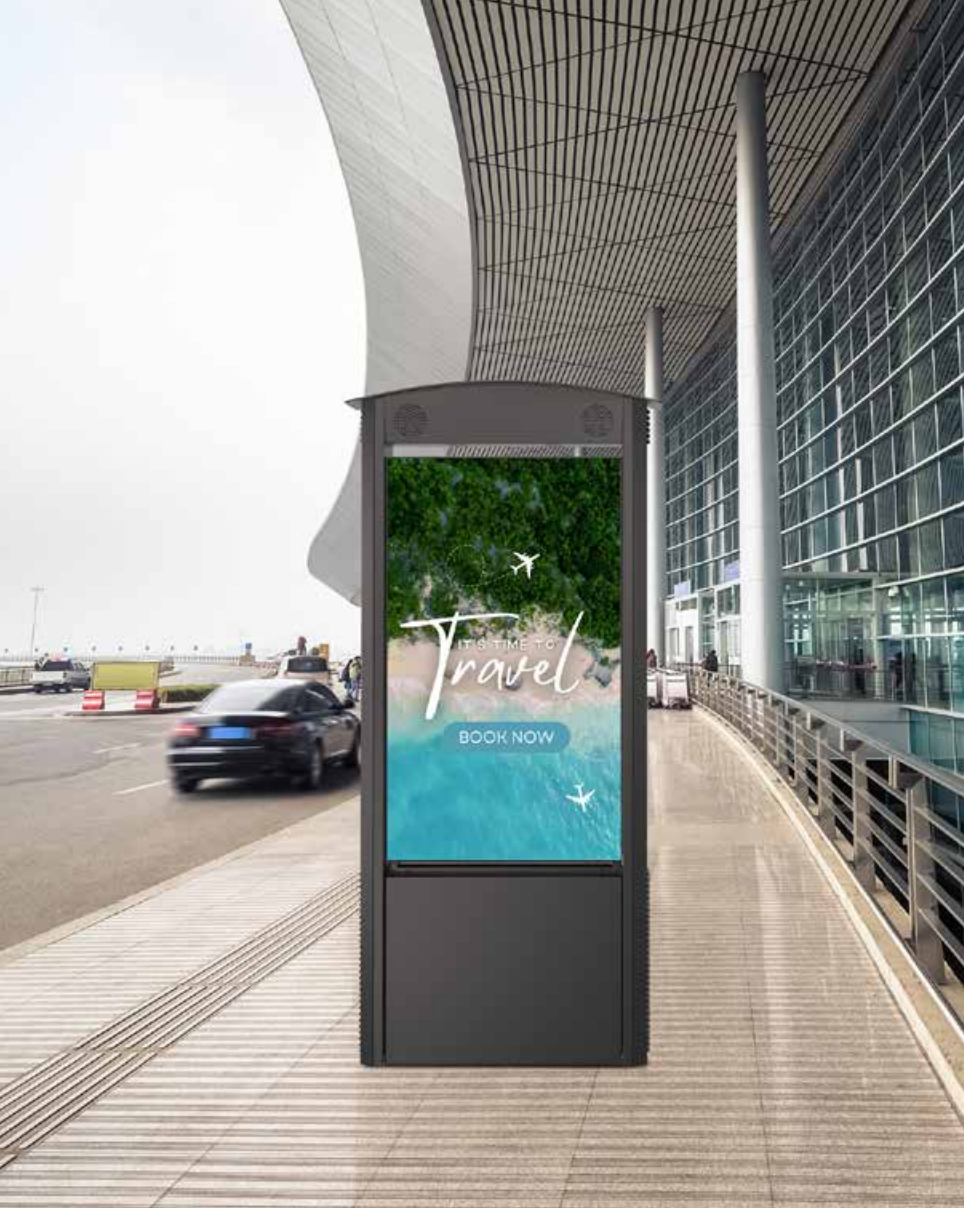
Indoor Kiosks
pg# 8-9



dvLED Video Wall Mounting Systems
pg# 10-11



Full Service Video Wall Mounts
pg# 12-13



Digital Menu Board Mounts
pg# 14



Window Display Mounts
pg# 15



Modular Solutions
pg# 16-17



Carts & Stands
pg# 18



Media Storage & Back-to-Back Mounts
pg# 19

Xtreme™ High Bright Outdoor Displays

The unique, fully-sealed design of the Peerless-AV® Xtreme™ High Bright Outdoor Display is perfect for any professional, digital signage application. These daylight readable displays are an ideal solution for commercial installations including stadiums, theme parks, quick serve restaurants, mass transit and more.

Visit peerless-av.com/XtremeHB to learn more.



All Weather Rated: IP66



Xtreme™ High Bright Outdoor Displays

XHB554		XHB653		XHB754	
Display Size 55" Class (54.6" Diagonal)		Display Size 65" Class (64.5" Diagonal)		Display Size 75" Class (74.5" Diagonal)	
Inputs CVBS, YPbPr, HDMI, DisplayPort, USB, HDBaseT, LAN		Inputs CVBS, HDMI, DisplayPort, USB, LAN		Inputs CVBS, YPbPr, HDMI DisplayPort, USB, HDBaseT, LAN	
Resolution 1920 x 1080	Brightness 2,500cd/m ²	Resolution 1920 x 1080	Brightness 2,500cd/m ²	Resolution 3840 x 2160	Brightness 3,000cd/m ²

Operating Temperature
-31°F to 140°F (-35°C to 60°C)

Viewing Angle
178° Vertical/Horizontal

Refresh Rate
60Hz

Display Orientation
Landscape, Portrait

- Daylight readable displays offer high bright output for a clear, crisp picture, even in direct sunlight
- IP66 rated design prevents the ingress of foreign materials, such as water, dust, moisture and insects, from entering the display
- Patented thermal exhaust system keeps internal components properly cooled in extreme heat
- Remote and Local monitoring, supported via IP addressable user interface, for temperature, humidity, and power draw diagnostics of the display



OUTDOOR ACCESSORIES

Visit peerless-av.com to learn more about Peerless-AV's complete line of outdoor solutions.



Wind Rated Tilt Wall Mount
for Outdoor Displays

Wind rated up to 110mph
when fixed tilt mechanism is engaged

EWMU

Display Size
32" to 65"

Max Load
200lb (91kg)

Mounting Pattern
721 x 449mm
(28.39"W x 17.67"H)



Outdoor Flat Wall Mount

For the 65" Xtreme™
High Bright Outdoor Display
(XHB653)

ESF686

Display Size
65"

Max Load
200lb (91kg)

Mounting Pattern
700 x 610mm
(27.6"W x 24.0"H)



Outdoor Flat Wall Mount

For the 75" Xtreme™
High Bright Outdoor Display
(XHB754)

ESF675

Display Size
75"

Max Load
200lb (91kg)

Mounting Pattern
1400 x 600mm
(55.12"W x 23.62"H)

- Designed specifically for outdoor use and constructed from weatherproof materials
- Easy tilt settings allow for the perfect viewing angle

- Product design allows the XHB653 to be installed in portrait or landscape orientation

- Telescoping adaptors allow the XHB754 to be installed in portrait or landscape orientation

Outdoor Kiosks

Replace static signage with Peerless-AV® outdoor kiosks for greater public engagement and seamless updates of digital content whenever, wherever. With a focus on functionality and aesthetics, these outdoor kiosks are designed to be modern, approachable, practical, and endure the rigors of everyday use. Peerless-AV's all-weather rated kiosks are ideal for sharing community information, travel, and weather details, as well as wayfinding, advertising, entertainment, and more.



All Weather
Rated Display:
IP66



Display's Operating
Temperature Range:
-31°F - 140°F
(-35°C to 60°C)

Smart City Kiosks

Includes 55" Xtreme™ High Bright Outdoor Display
(XHB554)

KOP55XHB-(S) | KOP55XHB-(S)A

Display Size
55" Class

 Wind tested up to 135 mph

Kiosk: **RoHS**  **TAA** COMPLIANT  Display:  **RoHS** **FC** **CE** **IP**  **UK** **CA**



Create an interactive kiosk by adding the KIRP-XHB4-(HT), which can detect up to 10 touch points



- All stainless steel and aluminum body combined with an outdoor rated paint finish to provide the ultimate in corrosion resistance
- Installation is easy without the need for cranes or forklifts
- IP55 rated media cabinet provides a dedicated, spacious area for storing AV components, and the integrated fans provide active cooling
- Available in black or silver and with or without speakers to ensure your product needs are met



Outdoor Digital Signage Boards

Supports 55" Peerless-AV® XHB554
and LG 55XE4F-M Outdoor Displays*

*Displays Must Be Ordered Separately

KOF555-1, KOF555-2, KOF555-3

Display Size
55" Class

Kiosk: **RoHS** 



CREATE A FULLY INTEGRATED DRIVE-THRU SOLUTION WITH A VARIETY OF OPTIONS:



Speaker/
Microphone Kit
(KOF-OPT-SPK)



Media
Storage Fan
(KOF-OPT-FAN)



Internal Media
Player Shelf
(KOF-OPT-SHELF)



Power
Distribution Unit
(KOF-OPT-ELECTRICAL)

- Sleek and stylish, yet rugged enough to be installed in any outdoor application for 24/7 use

- Modular design allows displays to be installed from the front, without disturbing the adjacent units

- Pedestal base allows for mounting to existing footing, thus eliminating the need for pouring new concrete**

**As long as it meets the requirements for various wind load specifications

Indoor Kiosks

Choose from a versatile array of sleek, slim and attractive standard kiosk enclosures or create a completely unique kiosk solution fit for any indoor application and market – corporate, education, quick serve restaurants, hospitality, stadiums, retail and more. Our kiosks are customizable to fit your needs – from the choice of technology to custom paint and vinyl wraps. If you can envision it, we can make it happen.



KIPC25 models

**Floor Standing Portrait
Kiosks, Single Sided**

For 40"-65" displays



KIPC25B models

**Floor Standing Portrait
Back-to-Back Kiosks**

For 40"-65" displays



KILH5 models

**Floor Standing
Landscape Kiosks**

For 40"-55" displays

Don't see a design or size you're looking for?





KIP586 & KIP588 models

Ultra Stretch Portrait Kiosks

For the LG 86BH5C & 86BH5C



KIL7/KIP7 & KIL6/KIP6 models

In-Wall & Wall Kiosks, Portrait & Landscape

For 40"-55" displays



Custom Solutions

For High Volume Projects



Contact our **dedicated Kiosk Design Team** to develop a solution (for high volume projects only) that perfectly matches your vision: 800-865-2112 or kiosks@peerless-av.com

SEAMLESS

dvLED Video Wall Mounting Systems

With over 80 years of audio visual experience, our commitment to the creation of cutting-edge technology and standard-setting solutions has elevated us to the status of the industry's most innovative leader. Our Dedicated SEAMLESS dvLED Solutions Team sets the bar for high quality design, while achieving the pinnacle of aesthetic results. Our dynamic group of dvLED professionals include structural and mechanical engineers, product managers, project managers, installers, as well as sales and service personnel. The entire Peerless-AV® dvLED Solutions Team is there every step of the way to ensure every customer receives SEAMLESS product support & service.

Choose between our SEAMLESS Kitted or Bespoke Series dvLED Mounting Systems to fit your specific needs.

SEAMLESS **KITTED**

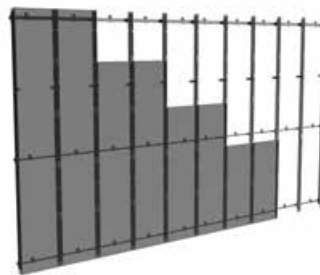
Standard & Dedicated dvLED Mounting Systems

The SEAMLESS Kitted Series dvLED Mounting Systems offer slim, space-saving & aesthetically appealing designs that can be adapted to support all of your dvLED video wall needs.



Flat, Slim Flat & Pop-Out
dvLED Mounting Systems

DS-LEDF, DS-LEDFS, DS-LEDP



Dedicated Flat
dvLED Mounting Systems

DS-LED models

Abgen

PLANAR

BARCO

SAMSUNG

INFILED

SHARP/NEC

LG Business Solutions

SNA DISPLAYS

PHILIPS

SONY

Unilumin



Accessory: Universal Trim Kit for dvLED Video Walls 3.5" to 5.9" deep (DS-LEDTK)

This sleek accessory is designed to cover the unsightly sides of dvLED displays and give the video wall a completely finished appearance.



SEAMLESS **BESPOKE** Custom dvLED Mounting Systems

Peerless-AV® provides an innovative approach to all our services - both indoors & out. Specializing in custom dvLED solutions, we strive to stay on the cutting edge of what the industry has to offer. We are equipped to work in a variety of markets & environments, giving our customers endless design options (flat, corner or curved configurations).

OUR CLIENTS



For more information, visit peerless-av.com/SEAMLESS

SmartMount® Full Service Video Wall Mounts

The SmartMount® video wall series is a comprehensive line of mounts that provide solutions for any environment. Limitless configurations are possible with the ability to accommodate displays in both landscape and portrait orientations. With features such as the tool-less micro-adjustment and the quick release pop out mechanism, we give you the tools you need to create the perfect video wall.

Visit peerless-av.com see the full line of award-winning mounting solutions.

RoHS



Supreme Full Service Video Wall Mount

Quick Release Model Available:
DS-VW775-QR

DS-VW775

Display Size
46" to 60"

Max Load
125lb (56.8kg)

VESA® Pattern
200 x 200 up to
600 x 400mm



Full Service Thin Video Wall Mount with Quick Release

DS-VW755S

Display Size
46" to 65"

Max Load
80lb (36.4kg)

VESA® Pattern
200 x 200 up to
400 x 400mm

600 x 400mm with required accessory

- ADA compliant when paired with displays ≤ 2" deep and 8-point tool-less micro-adjustment



Full Service Video Wall Mount Landscape

Quick Release Model Available:
DS-VW765-LQR

DS-VW765-LAND

Display Size
40" to 65"

Max Load
125lb (56.8kg)

VESA® Pattern
In 100mm increments,
starting at 200 x 200
up to 700 x 400mm

- Tool-less micro-adjustments at 8 points allows the mount to overcome uneven walls and creates a seamless video wall display



Full Service Video Wall Mount with Quick Release

DS-VW795-QR

Display Size
65" to 95"

Max Load
225lb (102kg)

VESA® Pattern
200 x 200 up to
600 x 600mm

- Quick release pop out mechanism provides convenient display access in recessed applications



ADDITIONAL MOUNTING SOLUTIONS

Accessories page 19



2x2 Flat Video
Wall Mount

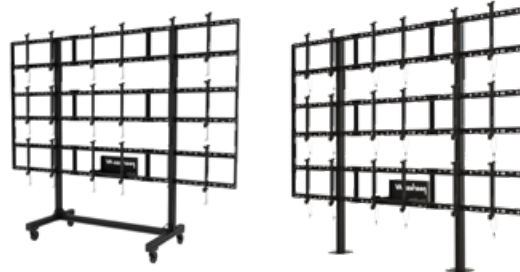
DS-VW655-2X2

Display Size
46" to 55"

Max Load
600lb (272kg)

Mounting Pattern
1886 x 1137mm
(74.25"W x 44.75"H)

- Horizontal adjustment makes mounting and aligning displays quick and easy



3x3 Video Wall Cart
& Pedestal Mount

Other Configurations Available

DS-C555-3X3 | DS-S555-3X3

Display Size
46" to 55"

Max Load
900lb (409kg)
100lb per display

VESA® Pattern
200 x 200 up to
600 x 400mm

- Tool-less micro-adjustment at 8 points seamlessly aligns the displays



Multi-Display Ceiling Mount
with Four Telescoping Arms

Other Configurations Available

DST975-4

Display Size
37" to 75"

Max Load
500lb (227kg)
125lb (57kg) per display

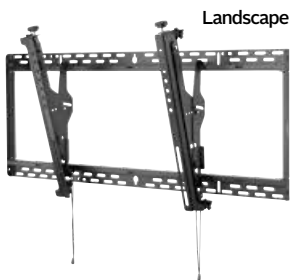
Mounting Pattern
730 x 405mm
(28.75"W x 15.95"H)

- Arms telescope to allow for the desired display spacing
- 0°-20° of tilt and 360° of swivel

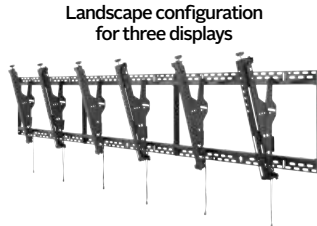
SmartMount[®] Digital Menu Board Mounts

Peerless-AV[®] offers menu board solutions for both wall and ceiling applications to fit all environments. The SmartMount[®] Digital Menu Board Mounts are perfect for Quick Service Restaurants, Cafeterias, Bars and more. With a one-to-one ordering process and functionality features that reduce installation time and costs, these digital menu board mounts are the perfect solution for your digital signage needs.

RoHS



Landscape



Landscape configuration for three displays



Digital Menu Board Wall Mount with Height & Depth Adjustment

Digital Menu Board Ceiling Mount with Height & Depth Adjustment - Landscape

Landscape	Landscape	Portrait	2x1 Configuration	2x1 Configuration	3x1 Configuration	3x1 Configuration
DS-MBZ642L	DS-MBZ647L	DS-MBZ647P	DS-MBZ942L-2X1	DS-MBZ947L-2X1	DS-MBZ942L-3X1	DS-MBZ947L-3X1
Display Size 40" to 42"	Display Size 46" to 65"	Display Size 42" to 48"	Display Size 40" to 42"	Display Size 46" to 48"	Display Size 40" to 42"	Display Size 46" to 48"
Max Load 100lb (45.5kg)	Max Load 100lb (45.5kg)	Max Load 100lb (45.5kg)	Max Load 200lb (90.9kg)	Max Load 200lb (90.9kg)	Max Load 300lb (136kg)	Max Load 300lb (136kg)
Mounting Pattern 880 x 400mm (34.65"W x 15.75"H)	Mounting Pattern 975 x 400mm (38.40"W x 15.75"H)	Mounting Pattern 550 x 400mm (21.65" x 15.75")	Mounting Pattern 1769 x 400mm (69.65"W x 15.75"H)	Mounting Pattern 1960 x 400mm (77.15"W x 15.75"H)	Mounting Pattern 2658 x 400mm (104.65"W x 15.75"H)	Mounting Pattern 2944 x 400mm (115.90"W x 15.75"H)

- Tool-less height adjustment and four-corner depth adjustment to alleviate issues with wall imperfections and fine-tuning

- Uses a one-to-one ordering process for an effortless digital signage solution

- Connecting wall plates create a continuous mounting surface for ease of display alignment

- Vertical adjustment on each bracket for post-installation leveling and height adjustment fine tuning

- Quick connect latch automatically engages the wall plate when mounting the display for a speedy set-up and peace of mind

Floor & Ceiling Window Display Mounts

Peerless-AV's unique mounting solutions are ideal for retail applications to showcase eye-catching, digital signage content in store windows. Choose between double-sided or single-sided mounts.

RoHS
2002/95/EC



Ceiling Window Display Mounts

For Samsung OM46N-D and OM55N-D
Double-Sided Displays

DS-OM46ND-CEIL	DS-OM55ND-CEIL
Display Size 46" Samsung Double-Sided Display	Display Size 55" Samsung Double-Sided Display

Max Load
100lb (45.4kg)

Center of Display
Ceiling Mounted:
53" (1350mm)



Floor Window Display Mounts

For Samsung OM46N-D and OM55N-D
Double-Sided Displays

DS-OM46ND-FLOOR	DS-OM55ND-FLOOR
Display Size 46" Samsung Double-Sided Display	Display Size 55" Samsung Double-Sided Display

Max Load
100lb (45.4kg)

Center of Display
Floor Mounted:
65" (1650mm)



Floor to Ceiling Cable Mount

Landscape/Portrait

DSF265L / DSF265P

Display Size
46" to 65"

Max Load
65lb (29.5kg)

Mounting Pattern
600 x 400mm

- Both floor and ceiling models have a minimal footprint, which allows for installation right up to the window

- Concealed cable management for a sleek and professional appearance

- Mounting solution that attaches at any point along the cable making it ideal for store windows

Modular Series

The Modular Series features connectable components to meet virtually any application, making them the most versatile and easy to install products available. Choose from a variety of kits including ceiling, floor-to-ceiling, and free standing in either single or dual poles, or create your own video wall configuration for your unique installation. The modular series provides a complete digital signage solution for a wide range of applications.

To “build your own” solution, contact Peerless-AV® Customer Care.



Modular Series Ceiling Kit

One 39" (1m) extension pole included with MOD-FPSKIT100(-B)
One 59" (1.5m) extension pole included with MOD-FPSKIT150(-B)

MOD-FPSKIT100/150(-B)

Modular Series Floor-to-Ceiling Kit

One 118" (3m) extension pole included

MOD-FCSKIT300(-B)

Modular Series Dual Pole Ceiling Kit

Two 59" (1.5m) extension poles included

MOD-FPS2KIT150(-B)

Modular Series Dual Pole Floor-to-Ceiling Kit

Two 118" (3m) extension poles included

MOD-FCS2KIT300(-B)

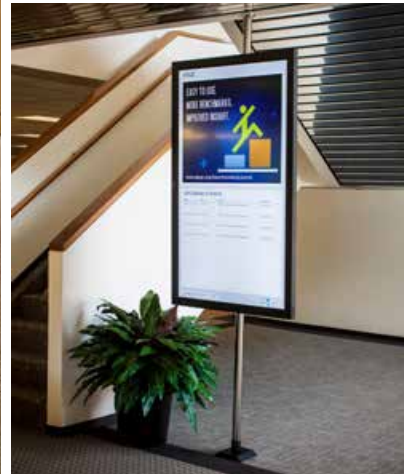
Display Size Up to 75"	Display Size Up" to 75"	Display Size 46" to 90"	Display Size 46" to 90"
Max Load 132lb (60kg) per display Up to 2 displays when used back to back using MOD-FPMD accessory.	Max Load 132lb (60kg) per display Up to 2 displays when used back to back using MOD-FPMD accessory.	Max Load 211lb (96kg) per display Up to 2 displays when used back to back using MOD-FPMD2 accessory.	Max Load 211lb (96kg) per display For multi screen applications the max system load is 411lb (192kg) with a maximum of 3 displays positioned on one side of the poles or 6 displays back to back using MOD-ASC2 and MOD-FPMS2 or MOD-FPMD2 accessories.
VESA® Pattern up to 600 x 400mm	VESA® Pattern up to 600 x 400mm	VESA® Pattern up to 600 x 400mm	VESA® Pattern up to 600 x 400mm

- Includes simple hook-on feature, with +20° to -5° tilt and locks at every 5° increment

- Modular Series poles can be cut to length on the jobsite

- Securely mounts to wood or concrete ceilings and floors to accommodate many environments

- Additional displays can be stacked on the dual poles for added versatility to the installation



Modular Series Dual Pole Floor-to-Wall Kit

Two 118" (3m) extension poles included

MOD-FW2KIT300(-B)

Display Size
46" to 90"

Max Load

211lb (96kg) per display
For multi screen applications the max system load is 411lb (192kg) with a maximum of 3 displays positioned on one side of the poles using MOD-ASC2 and MOD-FPMS2 accessories.

VESA® Pattern
up to 600 x 400mm



Modular Series Dual Pole Free Standing Kit

Two 78" (2m) extension poles included

MOD-FPP2KIT200(-B)

Display Size
46" to 90"

Max Load

211lb (96kg) per display
For multi screen applications the max system load is 411lb (192kg) with a maximum of 2 displays positioned on one side of the poles or 4 displays back to back using MOD-ASC2 and MOD-FPMS2 or MOD-FPMD2 accessories.

VESA® Pattern
up to 600 x 400mm



Modular Series Dual-Pole Wall Mount Interface & Flat Mount

MOD-AWM2

Display Size
46" to 90"*

Max Load

211lb (96kg) per display when used as a display mount*

*Reference mount specifications when used with optional Flat, Tilt or Video Wall Mounts

VESA® Pattern
200, 300 & 400mm when used as a display mount*



3x3 LANDSCAPE VIDEO WALL Shown in Modular Series Dual Pole Floor-to-Ceiling configuration

(SmartMount® Full Service Video Wall Mount with Quick Release, DS-VW765-LQR, required)



3x2 PORTRAIT VIDEO WALL Shown in Modular Series Dual Pole Floor-to-Wall configuration

(SmartMount® Full Service Video Wall Mount with Quick Release, DS-VW765-PQR, required)

- Display can be positioned at any point along the height of the pole for maximum versatility

- Integrated cable management runs through poles with open access at both ends for ease of use

- Provides compatibility with Peerless-AV Flat, Tilt and Video Wall mounts onto the Modular Series Dual Pole configurations

Carts & Stands

Peerless-AV® carts and stands are compatible with a wide range of display sizes, and are perfect for portability or when mounting to a wall is not an option. These solutions provide a safe and secure mounting platform for displaying digital content in public areas like conference rooms, lobbies or convention centers.



RoHS

Accessories page 19



Flat Panel Floor Stand

SS560F

Display Size
32" to 75"

Max Load
150lb (68.2kg) display
10lb (4.55kg) shelf

VESA® Pattern
200 x 200
up to 600 x 400mm



Universal Kiosk Stand

SS575K

Display Size
32" to 75"

Max Load
150lb (68.3kg) display
25lb (11.4kg) media player

VESA® Pattern
200 x 200
up to 600 x 400mm



Flat Panel Cart

SR560M

Display Size
32" to 75"

Max Load
150lb (68.2kg) display
10lb (4.55kg) shelf

Mounting Pattern
200 x 200
up to 600 x 400mm



Flat Panel Cart

SR598

Display Size
55" to 98"

Max Load
300lb (136.1kg)

VESA® Pattern
200 x 200 up to
900 x 600mm

- Display and optional component shelf can be located anywhere along the column for perfect component placement & viewing height

- Secure media player storage below the display with simple access to the device without having to remove the display

- Display and component shelf can be located anywhere along the column for perfect component placement & viewing height

- Pre-assembled base provides rigidity, stability and quick assembly

SmartMount[®] Media Storage & Back-to-Back Mounts

Media device storage is simple and effective with the SmartMount[®] Media Storage Mounts. Available solutions include flat/tilt wall and ceiling mounts and back-to-back ceiling mounts.

RoHS
RECYCLED



Flat/Tilt Wall Mount with Media Device Storage
Accommodates media device up to 12" x 13" x 2.4" (305 x 330 x 61mm)

Flat/Tilt Ceiling Mount with Media Device Storage
Accommodates media device up to 16" x 11" x 3.25" (406 x 279 x 83mm)

Back-to-Back Ceiling Mount with Media Device Storage
Provide storage for standard size computers

DST660

Display Size
40" to 60"

Max Load
125lb (57kg)

VESA[®] Pattern
200 x 100 up to
400 x 400mm

DST995

Display Size
40" to 95"

Max Load
225lb (102kg)

VESA[®] Pattern
In 100mm increments,
starting at 200 x 200
up to 400 x 400mm

DST965

Display Size
40" to 65"

Max Load
300lb (136kg)

Mounting Pattern
730 x 405mm
(28.75"W x 15.95"H)

- Security hardware to deter tampering and theft
- Easy access to media player for maintenance or repair

Accessories for the Digital Signage Collection



DCS400
Multi-Display
Structural Ceiling
Stress Decoupler



DCT300
Multi-Display
Truss Ceiling
Stress Decoupler



**DCT500/600/
700/800/900**
Multi-Display
I-beam Clamps



ACC600
Multi-Display
Interface Bracket



CMJ470/480/490
Ceiling Plates

Additional ceiling plates available, visit peerless-av.com



PLCM-2
Ceiling Mounted
Tilt Box for up to
90° Displays



PLCM-4
Ceiling Mounted
Stackable Tilt Box for
up to 90° Displays



DS-VWS###(-P)
Video Wall Spacer Kit



DSX750
Media Player
Holder Accessory



ACC-UCM
Universal AV
Component Mount
Can be mounted to various wall surfaces. Peerless-AV[®] products, or directly to the TV's VESA[®] pattern



ADD models
Fixed or Adjustable
Extension Columns for
Ceiling Decouplers

Various lengths available. Visit peerless-av.com



EXT models
Fixed Extension Columns

Various lengths available. Visit peerless-av.com



AEC models
Adjustable
Extension Columns

Various lengths available. Visit peerless-av.com



ACC325
Accessory Shelf for Flat
Panel Stand, FPZ-600



ACC615
Metal Stud Fastener
Kit - 6 togglers



ACCDC-DC models
TV/Display Covers



PLP-UNL
Universal I-Shaped
Display Adaptor for
32" to 90" Displays



PLP-V models
Dedicated
Display Adaptor

Various models available. Visit peerless-av.com



ACC-V900X
VESA[®] 600, 800
or 900mm
Adaptor



ACC310
Feet Accessory
for SmartMount[®]
Carts and Stands



ACC320
Electrical Outlet Strip with
Cord Wrap for SmartMount[®]
Carts and Stands





ACC-VCS
Video Conferencing Camera
Shelf for SmartMount[®]
Carts and Stands



ACC-LA
Laptop Arm for
SmartMount[®]
Carts and Stands



For over 80 years, passion and innovation continue to drive Peerless-AV forward. We proudly design and manufacture the highest quality products, including outdoor displays and TVs, dvLED and LCD video wall systems, complete integrated kiosks, professional carts and stands, and more. Whether a full-scale global deployment or high volume custom project, Peerless-AV develops meaningful relationships and delivers world-class service. In partnership with Peerless-AV, you are trusting an award-winning team of experts who will support your business every step of the way. For more information, visit peerless-av.com.

 peerless-av.com
 800-865-2112